



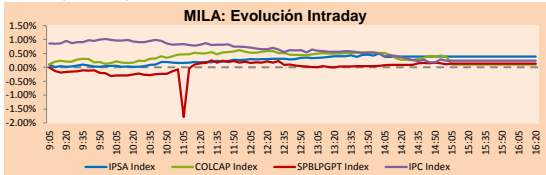
PULSO BURSÁTIL

Lima, October 26, 2017

MILA

Main Indices	Close	1 D	5 D	1 M	YTD	Market Cap. (US\$ bill)
▲ IPISA (Chile)	5,516.46	0.39%	0.72%	4.09%	32.88%	210.87
▲ IGPA (Chile)	27,657.71	0.33%	0.71%	4.46%	33.39%	242.21
▲ IGBC (Colombia)	11,007.71	0.47%	0.62%	-0.77%	8.92%	93.80
▲ COLCAP (Colombia)	1,471.17	0.10%	0.14%	-1.08%	8.84%	86.49
▲ S&P/BVL (Perú)*	19,940.20	0.14%	1.69%	9.10%	28.09%	102.95
▲ S&P/BVL SEL (Perú)	368.49	0.25%	1.61%	8.32%	23.66%	80.97
▲ S&P/BVL LIMA 25	32,727.66	0.63%	4.25%	15.54%	38.80%	95.46
▲ IPC (México)	48,986.84	0.23%	-2.03%	-2.36%	7.33%	301.01
▼ S&P MILA 40	709.47	-0.14%	-0.69%	3.70%	27.67%	291.52

* Market Cap. Of the last price *Legend: Variation 1D: 1 day; 5D: 5 days; 1M: 1 Month; YTD: Var%12/31/16 to date

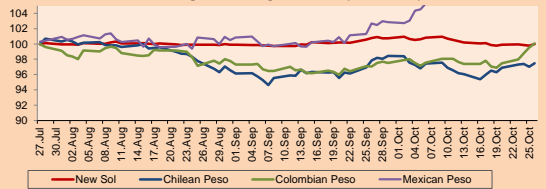


Source: Bloomberg

Currency	Price	1D*	5D*	30 D*	YTD*
▲ New Sol (PEN)	3,240.8	0.20%	0.19%	-0.78%	-3.43%
▲ Chilean Peso (CLP)	632.98	0.50%	1.24%	-0.38%	-5.58%
▲ Colombian Peso (COP)	3,014.95	0.55%	3.28%	3.12%	0.43%
▲ Mexican Peso (MXN)	19.20	0.86%	2.13%	6.96%	-7.35%

*Legend: Variation 1D: 1 day; 5D: 5 days; 1M: 1 Month; YTD: Var%12/31/16 to date

MILA: Foreign Exchange Indices (3 months)

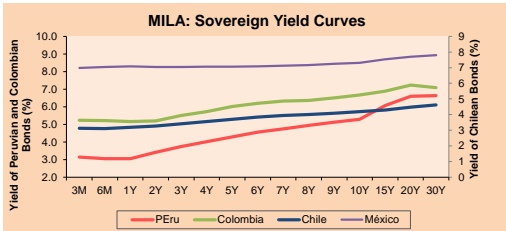


Base: 27/07/17=100

Source: Bloomberg

Fixed Income

Instrument	Currency	Price	Bid Yield (%)	Ask Yield (%)	Duration
PERU 4.125 08/25/2027	USD	109.232	3.06	3.00	8.18
PERU 7.125 03/30/19	USD	108.025	1.48	1.29	1.36
PERU 7.35 07/21/25	USD	130.3	2.96	2.91	6.15
PERU 8.75 11/21/33	USD	155.81	4.03	3.98	10.01
PERU 6.55 03/14/37	USD	133.617	4.05	4.01	11.84
PERU 5.625 11/18/2050	USD	125.007	4.23	4.20	16.71
CHILE 2.25 10/30/22	USD	99.295	2.43	2.37	4.68
CHILE 3.875 08/05/20	USD	105.385	1.92	1.81	2.62
CHILE 3.625 10/30/2042	USD	98.235	3.75	3.72	16.30
COLOM 11.75 02/25/20	USD	121.75	2.16	2.02	2.08
COLOM 11.85 03/09/28	USD	169.011	3.79	3.71	7.07
COLOM 10.375 01/28/33	USD	155.05	5.20	5.06	9.07
COLOM 7.375 09/18/37	USD	130.387	4.98	4.93	11.64
COLOM 6.125 01/18/41	USD	116.272	4.96	4.92	13.11
MEX 4.10/02/23	USD	104.503	3.19	3.13	5.30
MEX5.55 01/45	USD	111.205	4.819	4.796	14.72



Source: Bloomberg

Equity

Largest gains	Exchange	Amt.	Price	▲%	Largest losses	Exchange	Amt.	Price	▼%
ATACOAC1	Lima	PEN	0.80	8.11	DNT	Lima	USD	0.14	-4.93
CSCO	Lima	USD	34.01	6.28	PML	Lima	USD	0.33	-4.86
CORAREC1	Lima	PEN	0.85	6.25	TV	Lima	USD	1.12	-3.45
ECOPETROL	Colomb.	COP	1565.00	5.03	TEF	Lima	USD	10.02	-3.38

Per Turnover

Per Turnover	Exchange	Amount (US\$)
ECOPETROL	Colomb.	24,341,956
FALABELLA	Santia.	12,561,201
CMPC	Santia.	11,416,710
SQM-B	Santia.	10,466,514
BSANTANDER	Santia.	8,208,722

Per Volume

Per Volume	Exchange	Volume
BSANTANDER	Santia.	106,800,850
VAPORES	Santia.	88,458,559
ESVAL-C	Santia.	86,343,742
ORO BLANCO	Santia.	71,205,667
ECOPETROL	Colomb.	47,826,636

MILA

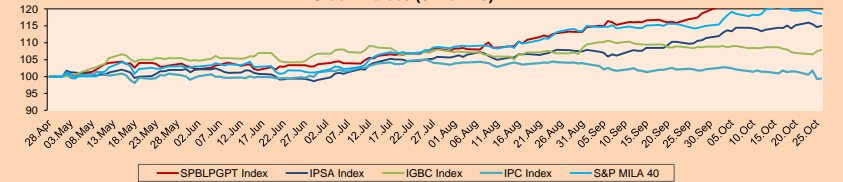
Peru: The General Index of the Peruvian BVL ended the session today with a positive performance of +0.14%. The index maintained an accumulated positive trend of +28.09% in local currency, while the adjusted foreign currency performance was +32.65%. Then, the S&P/BVL Peru SEL obtained a positive result of +0.26%, while the S&P/BVL LIMA 25 grew +0.63%. The spot PEN reached S/3.2308.

Chile: The IPISA index ended the day with a positive result of +0.39%. The index sectors with the most positive results were Materials (+1.02%) and Energy (+0.80%). On the other hand, the values with the most bullish results were Banco Santander Chile (+2.03%) and Sociedad Química y Minera de Chile SA (+1.52%).

Colombia: The COLCAP index ended the session with positive results of +0.10%. The sectors with upward performance were Energy (+4.71%) and Basic Products (+0.62%). In addition, the shares with the highest yields were Ecopetrol SA (+5.03%) and Almacenes Éxito SA (+1.63%).

Mexico: The Mexican CPI index closed today with a positive yield of +0.23%. The sectors of the index that generated the most positive returns were Materials (+1.09%) and Non-Basic Consumer Products (+0.90%). Finally, the shares with the highest yields were Coca-Cola Femsa SAB de CV (+2.27%) and Wal-Mart de México SAB de CV (+2.05%).

MILA: Stock Indices (6 months)



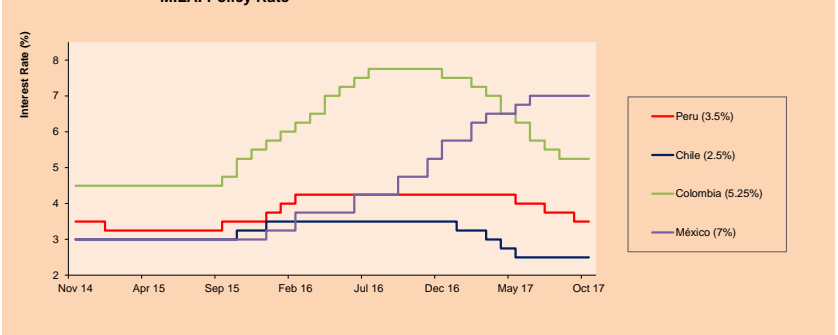
Base: 01/05/17=100

Source: Bloomberg

ETFs

ETFs	Curr.	Close	1D	5D	30 D	YTD	Exchange
▼ iShares MSCI All Peru Capped Index Fund	USD	41.91	-0.33%	1.35%	9.51%	27.77%	NYSE Arca
▼ iShares MSCI Chile Capped	USD	50.35	-0.75%	-1.51%	4.57%	34.55%	BATS
▼ Global X MSCI Colombia	USD	14.15	-0.63%	-3.35%	-3.77%	9.35%	NYSE Arca
▼ iShares MSCI Mexico Capped	USD	50.23	-0.89%	-4.43%	-9.35%	14.24%	NYSE Arca
▼ iShares MSCI Emerging Markets	USD	45.48	-0.68%	-1.32%	2.23%	29.91%	NYSE Arca
▼ Vanguard FTSE Emerging Markets	USD	44.2	-0.52%	-0.96%	1.96%	23.53%	NYSE Arca
▼ iShares Core MSCI Emerging Markets	USD	54.89	-0.63%	-1.15%	2.35%	29.31%	NYSE Arca
▼ iShares JP Morgan Emerging Markets Bonds	USD	58.46	-0.49%	-1.03%	1.21%	19.53%	BATS
▼ Morgan Stanley Emerging Markets Domestic	USD	7.87	-0.88%	-1.75%	-3.91%	9.76%	New York

MILA: Policy Rate



Source: Bloomberg

Capital Market Laboratory Coordinator: Economist Bruno Bellido Anicama
Support: Sebastián Butters, Kauri Olulo, Jairo Trujillo, Mario Villar
e-mail: pulsobursatil@ulima.edu.pe
facebook: www.facebook.com/pulsobursatil.ul
Phone number: 4376767 Anexos: 35340 - 35310

PULSO BURSÁTIL

WORLD

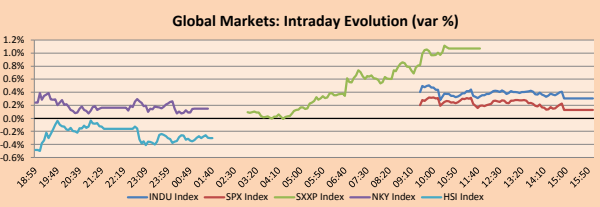
Main Indices	Close	1 D*	5 D*	1 M*	YTD*	Market Cap. (US\$ Mill.)
▲ Dow Jones (USA)	23,400.86	0.31%	1.03%	4.75%	18.41%	6,505,863
▲ Standard & Poor's 500 (USA)	2,560.40	0.13%	-0.07%	2.13%	14.36%	22,721,876
▼ NASDAQ Composite (USA)	6,556.77	-0.11%	-0.73%	1.80%	21.80%	10,142,598
▲ Stoxx EUROPE 600 (Europe)	391.27	1.07%	0.56%	1.47%	8.2%	8,939,633
▲ DAX (Germany)	13,133.28	1.39%	1.10%	3.76%	14.39%	1,043,811
▲ FTSE 100 (United Kingdom)	7,486.50	0.53%	-0.49%	2.37%	4.81%	1,569,322
▲ CAC 40 (France)	5,455.40	1.50%	1.62%	3.28%	12.20%	1,316,549
▲ IBEX 35 (Spain)	10,347.80	1.92%	1.47%	-0.20%	10.65%	560,466
▼ MSCI AC Asia Pacific Index	166.55	-0.23%	-0.18%	3.58%	23.33%	14,104,263
▼ HANG SENG (Hono kong)	28,202.38	-0.36%	0.15%	2.03%	28.19%	2,711,019
▲ SHANGHAI SE Comp. (China)	3,407.57	0.31%	1.11%	1.86%	9.79%	5,040,250
▲ NIKKEI 225 (Japan)	21,739.78	0.15%	1.36%	7.27%	13.74%	3,451,740
▼ BOVESPA (Brazil)	75,896.35	-0.01%	-0.51%	2.85%	26.02%	701,473
▼ Merval (Argentina)	27,828.65	-0.18%	3.82%	10.12%	64.49%	110,234

*Legend: Variation 1D: 1 Day; 5D: 5 Days; 1M: 1 Month; YTD: Var. % 12/31/16 to date

Equity

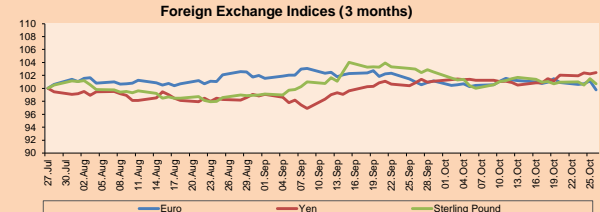
Wall Street (Stocks from S&P 500)	Curr.	Price	▲	Exchange	Largest gains	Curr.	Price	▼	Exchange
FL UN	USD	33.07	5.69	New York	CHTR LW	USD	316.29	-8.30	NASDAQ GS
FTI UN	USD	26.58	5.64	New York	XRX UN	USD	30.65	-7.40	New York
UNP UN	USD	116.47	5.62	New York	ALLE UN	USD	80.7	-6.69	New York
ORLY UN	USD	214	5.56	NASDAQ GS	UHS UN	USD	103.86	-6.22	New York

Europe (Stocks from STOXX EUROPE 600)	Curr.	Price	▲	Exchange	Largest losses	Curr.	Price	▼	Exchange
Largest gains	EUR	46	9.00	Helsinki	OUTTV FH	EUR	8.175	-9.67	Helsinki
NESTE FH	EUR	46	9.00	Helsinki	ORNBV FH	EUR	35.6	-7.84	Helsinki
ESSITY SS	SEK	242.8	7.82	Stockholm	BARC LN	GBP	182.4	-7.41	Londres
BEI GY	EUR	96.44	6.02	Xetra	HPOLB SS	SEK	82.2	-6.27	Stockholm
WDI GY	EUR	82.76	5.83	Xetra					



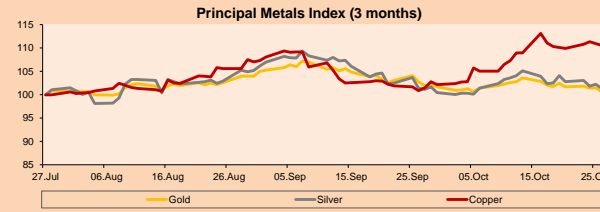
Currency	Price	1 D*	5 D*	1 M*	YTD*
▼ Euro	1.1651	-1.37%	-1.70%	-1.20%	10.78%
▲ Yen	113.9800	0.21%	1.28%	1.55%	-2.55%
▼ Sterling Pound	1.3161	-0.76%	0.02%	-2.21%	6.65%
▼ Yuan	6.6426	0.05%	0.44%	0.04%	-4.35%
▼ Hong Kong Dollar	7.8028	-0.01%	0.02%	-0.12%	0.60%
▲ Brazilian Real	3.2973	1.93%	3.99%	4.14%	1.29%
▲ Argentine Peso	17.6579	0.95%	1.18%	0.48%	11.20%

*Legend: Variation 1D: 1 Day; 5D: 5 Days; 1M: 1 Month; YTD: Var. % 12/31/16 to date



Commodities	Close	1 D*	5 D*	1 M*	YTD*
▼ Oro (US\$ Oz. T) (LME)	1,266.97	-0.82%	-1.79%	-2.10%	9.95%
▼ Plata (US\$ Oz. T) (LME)	18.79	-0.96%	-2.72%	-0.15%	5.47%
▼ Cobre (US\$ Tm) (LME)	6,961.00	-0.33%	0.39%	9.57%	26.04%
▲ Zinc (US\$ Tm) (LME)	3,274.00	0.15%	3.28%	3.35%	28.00%
▲ Petróleo WTI (US\$ Barril) (NYM)	52.64	0.88%	2.19%	0.86%	-7.75%
▼ Estante (US\$ Tm) (LME)	19,980.00	-0.10%	0.27%	-4.45%	-5.78%
▼ Plomo (US\$ Tm) (LME)	2,475.50	-0.24%	0.55%	-0.09%	23.81%
▲ Molibdeno (US\$ Tm) (LME)	15,637.00	0.01%	0.01%	0.03%	5.02%
▼ Azúcar #11 (US\$ Libra) (NYB-ICE)	14.11	-0.49%	-0.14%	1.44%	-24.06%
▲ Cacao (US\$ Tm) (NYB-ICE)	2,119.00	1.63%	-0.66%	7.56%	-2.93%
▲ Café Arábica (US\$ Tm) (NYB-ICE)	124.55	0.36%	-1.81%	-5.82%	-15.10%

*Legend: Variación 1D: 1 Día; 5D: 5 Días; 1M: 1 Mes; YTD: Var. % 31/12/15 a la fecha



Global Overview

United States:

The US stock market ended the day with mixed results, owing to a rise on Thursday generated by corporate earnings reports, which helped revitalize the Wall Street buyout. On the other hand, the House of Representatives also approved a budget plan, paving the way for the Senate to eventually approve a simple majority tax reform package. In addition, markets are also closely monitoring President Donald Trump's upcoming election to head the Federal Reserve after President Janet Yellen's term expires in February. Yellen is out of the race for first place, according to two reports on Thursday, leaving Fed Governor Jerome Powell and Stanford University economist John Taylor as favorites. In macroeconomic data, pending home sales declined to a 2 1/2 year low in September, with consensus estimates missing for a 0.4% increase, as the housing market is affected by the shortage of supply and the strong demand. Meanwhile, the advanced trade deficit of EE. UU. It expanded by 1.3% in September. Finally, shares of Twitter Inc. + 18.49%, recorded their best daily performance since September 2016, after the social media group reported narrower losses.

Europe:

The European stock market closed today with positive results among its main indices. Government bonds issued by Italy, Spain and other financially vulnerable Eurozone countries recovered after the European Central Bank announced that it would extend its asset purchase program to 2018 as expected but would reduce the volume of its purchases monthly as of January. The ECB said it would cut its monthly asset purchases by half to 30 billion euros from 2018 and the program would run through September next year. The yield on Italian and Spanish bonds fell, recovering from yesterday. This increase gained additional momentum after the political tensions between Catalonia and the Spanish central government diminished, since the Catalan leader Carles Puigdemont has asked for local elections to avoid that Spain eliminates the autonomy of the region. This action helped to stem the concerns that this potential secession would extend to the rest of the Eurozone to encourage other separatist movements, threatening the territorial integrity of the European Union. On the other hand, the British stocks also had a positive behavior after the announcement of Mario Draghi, the president of the ECB. For companies, Barclays fell about -8%, having its worst session since June 2016. This drop was triggered by its third-quarter earnings report, which reported that profits were down 13% to 5.17 billion pounds.

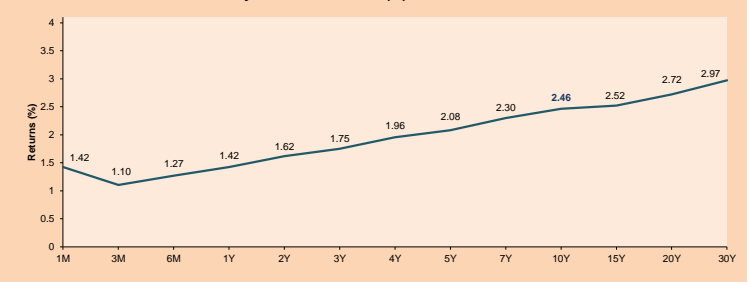
Asia:

The Asian stock market ended today's session with positive results among its main indices. Although some investors were cautious ahead of early comments by the European Central Bank (ECB) late on Thursday about reducing bond purchases. In addition, bullish markets fell slightly amid the global gains this month had a momentary pause. But China was one of the exceptions, because its shares rose after the introduction of members of the country's top governing body yesterday. Regarding Japan, the Nikkei 225 benchmark rose 0.2%, reversing part of Wednesday's massive sales that affected the index's 16-day of gains. The increase would have been greater, but the Japanese yen appreciated, triggered by some financiers that took precautions, anticipating increases in the interest rate by the United States' Federal Reserve (FED). On the other hand, Japanese steelmaker Kobe Steel Ltd. said it found four more suspected cases of counterfeit data, further increasing the scandal that slashed more than a third of the company's market value since it broke on October 8.

ETFs

ETFs	Curr.	Close	1D	5D	30 D	YTD	Exchange
SPDR S&P 500 ETF TRUST	USD	255.62	0.13%	-0.07%	2.63%	14.36%	NYSE Arca
ISHARES MSCI EMERGING MARKET	USD	46.48	-0.68%	-1.32%	2.23%	29.91%	NYSE Arca
ISHARES IBOXX USD HIGH YIELD	USD	88.23	-0.12%	-0.43%	-0.41%	1.94%	NYSE Arca
FINANCIAL SELECT SECTOR SPDR	USD	26.80	0.56%	1.79%	5.55%	15.27%	NYSE Arca
VEANEK VECTORS GOLD MINERS E	USD	22.43	-1.75%	-4.31%	-3.94%	7.22%	NYSE Arca
ISHARES RUSSELL 2000 ETF	USD	148.76	0.21%	-0.36%	2.87%	10.32%	NYSE Arca
SPDR GOLD SHARES	USD	120.33	-0.84%	-1.68%	-2.28%	9.78%	NYSE Arca
ISHARES 20-YEAR TREASURY BO	USD	122.43	-0.33%	-2.30%	-3.42%	2.77%	NASDAQ GM
POWERSHARES QQQ TRUST SERIES	USD	146.96	-0.32%	-0.91%	2.65%	24.04%	NASDAQ GM
ISHARES NASDAQ BIOTECHNOLOGY	USD	313.98	-2.32%	-6.31%	-4.34%	18.31%	NASDAQ GM
ENERGY SELECT SECTOR SPDR	USD	67.22	0.21%	-0.62%	-1.35%	-10.75%	NYSE Arca
PROSHARES ULTRA VIX ST FUTUR	USD	17.55	-0.57%	10.87%	-21.51%	-89.87%	NYSE Arca
UNITED STATES OIL FUND LP	USD	10.57	0.86%	2.13%	0.76%	-9.81%	NYSE Arca
ISHARES MSCI BRAZIL CAPPED E	USD	40.63	-2.98%	-4.40%	-2.52%	21.87%	NYSE Arca
SPDR S&P OIL & GAS EXP & PR	USD	32.42	0.53%	-2.17%	-4.98%	-21.73%	NYSE Arca
UTILITIES SELECT SECTOR SPDR	USD	54.71	0.02%	-0.20%	2.03%	12.64%	NYSE Arca
ISHARES US REAL ESTATE ETF	USD	79.24	-0.61%	-2.27%	-0.75%	2.99%	NYSE Arca
SPDR S&P BIOTECH ETF	USD	81.81	-1.28%	-4.55%	-1.73%	38.22%	NYSE Arca
ISHARES IBOXX INVESTMENT GRA	USD	120.55	-0.01%	-0.69%	-0.71%	2.88%	NYSE Arca
ISHARES JP MORGAN USD EMERGI	USD	115.25	-0.29%	-1.00%	-0.89%	4.56%	NASDAQ GM
REAL ESTATE SELECT SECT SPDR	USD	32.14	-0.56%	-1.95%	-0.37%	4.52%	NYSE Arca
ISHARES CHINA LARGE-CAP ETF	USD	45.67	-0.07%	0.24%	4.41%	31.58%	NYSE Arca
CONSUMER STAPLES SPDR	USD	53.56	0.07%	-0.87%	-1.62%	3.58%	NYSE Arca
VEANEK VECTORS JUNIOR GOLD M	USD	31.91	-1.48%	-5.62%	-6.42%	1.14%	NYSE Arca
SPDR BBG BARC HIGH YIELD BND	USD	37.14	-0.13%	-0.40%	-0.35%	1.89%	NYSE Arca
VANGUARD REIT ETF	USD	81.91	-0.82%	-2.64%	-1.44%	-0.75%	NYSE Arca

USA Treasury Bonds Yield Curve (%)



PULSO BURSÁTIL

LIMA

Stocks

Ticker	Currency	Price	1D*	5D*	30D*	YTD*	Frequency	Volume (US\$)	Beta	Dividend Yield (%)	Price Earning	Market Cap. (M US\$)	Economic Sector*	Index Weight
▲ ALICORC1 PE**	S/.	10.36	1.97%	4.12%	10.21%	41.92%	100.00%	771,132	0.58	1.35	23.28	2,727.63	Industrial	3.53%
▲ ATACOCB1 PE**	S/.	0.73	2.82%	12.31%	62.58%	82.50%	100.00%	155,756	1.92	0.00	-	224.07	Mining	1.02%
▼ BACKUSH1 PE**	S/.	17.00	-1.16%	0.00%	0.00%	6.25%	90.00%	239,455	0.43	3.25	2.59	8,738.53	Industrial	0.82%
▲ BAP PE**	US\$	207.30	0.14%	0.63%	1.42%	31.04%	100.00%	1,014,084	1.08	1.80	-	16,473.46	Diverse	5.82%
▼ BVN PE**	US\$	13.90	-1.42%	-3.47%	5.78%	20.87%	100.00%	213,784	1.47	0.60	-	3,826.26	Mining	5.88%
▲ CASAGRC1 PE**	S/.	6.56	0.92%	4.13%	6.67%	-4.09%	100.00%	39,282	0.56	6.15	9.14	170.51	Agricultural	1.31%
▼ CONTINC1 PE**	S/.	4.25	-0.47%	0.00%	0.00%	17.89%	100.00%	241,531	0.64	3.48	15.87	6,403.74	Finance	2.85%
▲ CORAREH1 PE**	S/.	0.71	2.90%	2.90%	18.33%	44.90%	100.00%	94,715	1.03	4.44	12.05	291.06	Industrial	1.72%
▲ CPACASC1 PE**	S/.	8.41	0.12%	0.72%	1.33%	34.60%	100.00%	917,535	0.39	4.25	31.80	1,108.19	Industrial	2.38%
▼ CVERDEC1 PE**	US\$	28.40	-0.35%	2.90%	23.48%	48.61%	100.00%	712,794	1.20	0.00	22.03	9,941.59	Mining	5.25%
- ENGEPEC1 PE**	S/.	2.30	0.00%	0.88%	-2.13%	-11.54%	70.00%	3,062	0.79	0.00	38.66	2,053.26	Public Services	1.44%
▲ ENDISPC1**	S/.	6.00	2.21%	5.26%	5.63%	-2.60%	70.00%	73,433	0.87	3.18	12.91	1,182.23	Public Services	0.98%
▲ FERREYC1 PE**	S/.	2.52	3.28%	8.15%	21.15%	49.11%	100.00%	8,277,891	1.02	5.10	10.71	788.73	Diverse	4.90%
▲ GRAMONC1 PE**	S/.	2.90	2.47%	-3.97%	-6.45%	-38.30%	100.00%	193,403	1.89	0.00	113.57	590.64	Diverse	4.05%
▼ IFS PE**	US\$	38.50	-1.28%	1.05%	5.77%	20.31%	95.00%	2,232,098	0.45	3.38	13.95	4,354.77	Diverse	7.22%
▲ INRETC1 PE**	US\$	19.95	0.50%	3.64%	5.00%	2.94%	100.00%	448,625	1.00	0.98	25.55	2,051.01	Diverse	5.28%
▲ LUSURC1 PE**	S/.	12.70	1.60%	5.75%	7.35%	-2.98%	100.00%	94,882	0.65	4.88	14.64	1,908.26	Public Services	1.81%
▲ MILPOC1 PE**	S/.	5.25	5.00%	15.38%	15.38%	53.51%	95.00%	386,614	1.06	16.32	12.12	2,146.31	Mining	1.56%
▲ MINSURH1 PE**	S/.	2.05	2.50%	14.53%	32.26%	41.38%	95.00%	654,455	1.49	3.36	25.69	1,823.67	Mining	3.09%
▼ PML PE**	US\$	0.33	-4.86%	-4.86%	33.20%	141.30%	100.00%	37,265	1.15	0.00	-	85.96	Mining	2.12%
- RELAPAC1 PE**	S/.	0.32	0.00%	12.68%	25.49%	37.34%	100.00%	174,855	1.23	0.00	6.31	349.04	Industrial	2.12%
▼ SCCO PE**	US\$	43.27	-1.66%	-0.30%	10.64%	34.00%	80.00%	136,114	0.90	28.10	28.10	33,447.71	Mining	2.14%
▼ SIDERC1 PE**	S/.	0.49	-1.02%	1.04%	13.58%	46.97%	100.00%	10,738	1.60	0.00	7.45	183.76	Industrial	1.43%
▼ TV PE**	US\$	1.12	-3.45%	-5.88%	-0.88%	31.76%	100.00%	502,999	1.75	0.00	-	921.25	Mining	2.93%
- UNACEMC1 PE**	S/.	3.00	0.00%	1.69%	10.70%	17.19%	100.00%	186,876	0.91	1.73	48.26	1,524.16	Industrial	3.00%
▼ VOLCABC1 PE**	S/.	1.62	-1.22%	9.46%	62.00%	125.00%	100.00%	755,972	1.70	1.60	21.71	3,136.54	Mining	5.90%

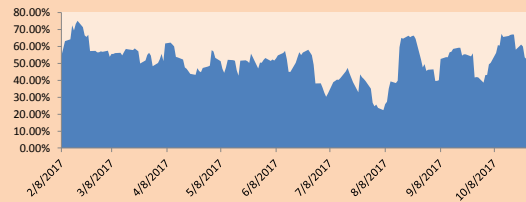
Quantity of shares: 26
Source: Bloomberg, Económata
* Bloomberg Industry Classification System
** PER is used in the stock market and original currency of the instrument
*Legend: Variation 1D: 1 Day; 5D: 5 Days; 1M: 1 Month; YTD: Var.% 12/31/16 to date

Sectorial Indices

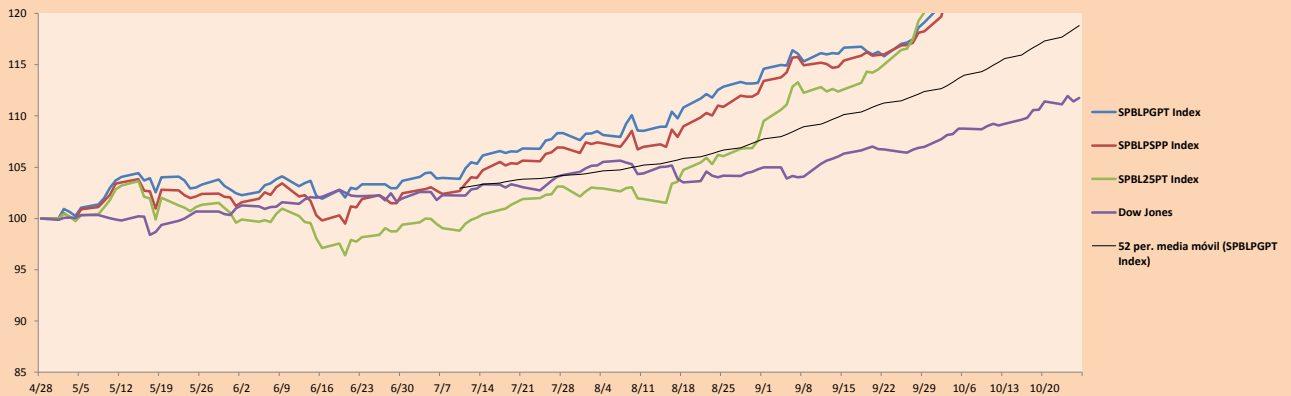
	Close	1D*	5D*	30D*	YTD*	Beta
▼ Mining Index	348.52	-0.92%	0.79%	17.20%	40.33%	1.70
▲ Consumer Index	870.94	1.09%	3.39%	6.63%	27.89%	0.34
▲ Industrial Index	250.20	1.77%	2.98%	9.17%	13.17%	0.88
▲ Banking and Financial Index	1,040.90	0.30%	0.83%	0.95%	27.54%	0.91
▲ Construction Index	290.97	1.16%	0.40%	3.34%	-1.60%	0.83
▲ Services Index	452.48	0.69%	2.25%	2.29%	-6.48%	0.25
▼ Juniors Index	46.39	-3.35%	1.31%	35.25%	65.32%	1.16
▲ Electric Index	441.73	0.69%	2.25%	2.29%	-6.48%	0.25

*Legend: Variation 1D: 1 Day; 5D: 5 Days; 1M: 1 Month; YTD: Var.% 12/31/16 to date

Correlation Graph of Returns of Mining Index against Metallic Index of London (3 months)



Indices (6 months)



Source: Bloomberg

Capital Market Laboratory Coordinator: Economist Bruno Bellido Anicama
Support: Sebastián Butters, Kaori Olulua, Jairo Trujillo, Mario Villar
e-mail: pulsobursatil@ulima.edu.pe
facebook: www.facebook.com/pulsobursatil.ul
Phone number : 4376767 Anexxes: 35340 - 35310

The content of this document is just for informational purposes. The information and opinions expressed should not be considered as recommendations for future decisions. Under any circumstances, the Capital Market Laboratory of University of Lima will be responsible for the use of the statements in this document.

PULSO BURSÁTIL

SOVEREIGN RATING

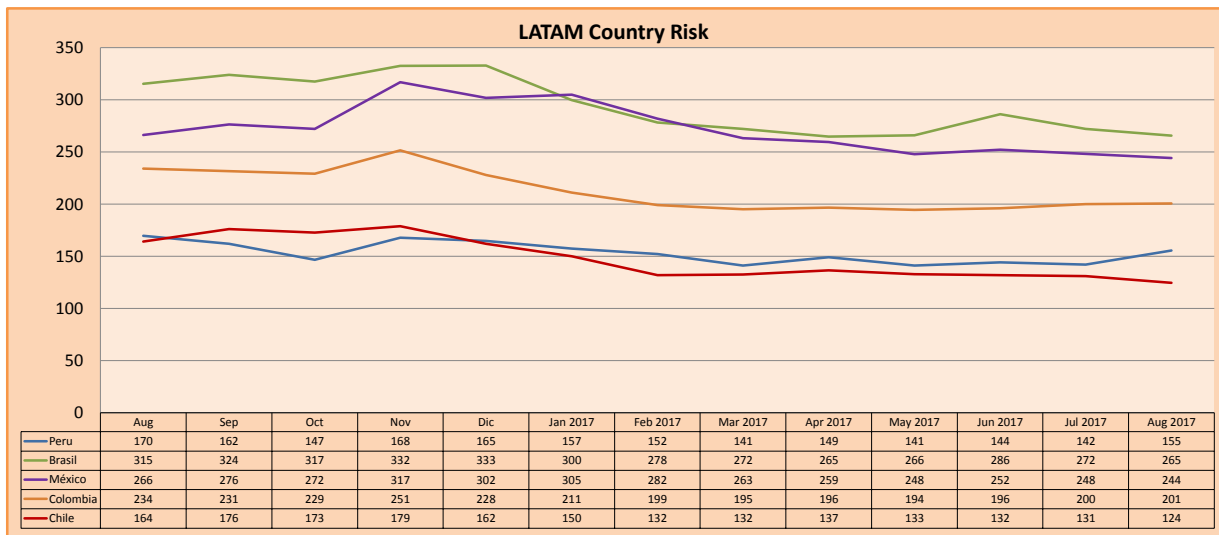
RISK RATINGS

Moody's	S&P	Fitch	
Aaa	AAA	AAA	Prime
Aa1	AA+	AA+	High credit quality
Aa2	AA	AA	
Aa3	AA-	AA-	
A1	A+	A+	Medium-high grade, with low credit risk
A2	A	A	
A3	A-	A-	
Baa1	BBB+	BBB+	Moderate Credit Risk
Baa2	BBB	BBB	
Baa3	BBB-	BBB-	
Ba1	BB+	BB+	It has speculative elements and it is subject to substantial credit risk
Ba2	BB	BB	
Ba3	BB-	BB-	
B1	B+	B+	It is considered speculative and it has high credit risk
B2	B	B	
B3	B-	B-	
Caa1	CCC+	CCC	Bad credit conditions and it is subject to high credit risk
Caa2	CCC		
Caa3	CCC-		
Ca	C	DDD DD D	Very close to default or in default
C	D		

Source: Bloomberg

Latin America Credit Rating			
Clasificadora de riesgo			
Country	Moody's	Fitch	S&P
Peru	A3	BBB+	BBB+
Mexico	A3	BBB+	BBB+
Venezuela	Caa3	CC	CCC-
Brazil	Ba2	BB	BB
Colombia	Baa2	BBB	BBB
Chile	Aa3	A	A+
Argentina	B3	B	B
Panama	Baa2	BBB	BBB

Source: Bloomberg



Source: Bloomberg

Capital Market Laboratory Coordinator: Economist Bruno Bellido Anicama
 Support: Sebastián Butters, Kaori Olulo, Jairo Trujillo, Mario Villar
 e-mail: pulsobursatil@ulima.edu.pe
 facebook: www.facebook.com/pulsobursatil.ul
 Phone number : 4376767 Anexos: 35340 - 35310

The content of this document is just for informational purposes . The information and opinions expressed should not be consider as recommendations for future decisions .Under any circumstances, the Capital Market Laboratory of University of Lima will be responsible for the use of the statements in this document.