

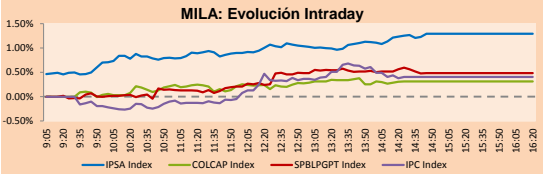
PULSO BURSÁTIL

Lima, november 17, 2017

MILA

Main Indices	Close	1 D	5 D	1 M	YTD	Market Cap. (US\$ bill)
▲ IPSA (Chile)	5,383.45	1.45%	-0.27%	-1.88%	29.60%	205.04
▲ IGPA (Chile)	27,099.36	1.10%	-0.33%	-1.45%	30.63%	236.94
▲ IGBC (Colombia)	10,789.08	0.36%	-0.15%	-2.18%	6.77%	94.83
▲ COLCAP (Colombia)	1,441.02	0.31%	0.05%	-2.69%	6.61%	96.81
▲ S&P/BVL (Perú)*	19,478.58	0.68%	-1.03%	-1.10%	25.13%	100.93
▲ S&P/BVL SEL (Perú)	355.04	0.95%	-2.73%	-2.77%	19.15%	79.11
▲ S&P/BVL LIMA 25	30,391.84	0.06%	-2.44%	-2.54%	28.90%	93.27
▲ IPC (México)	47,932.56	0.22%	-0.19%	-4.39%	5.03%	301.36
▲ S&P MILA 40	693.62	1.49%	0.04%	-3.39%	24.79%	285.31

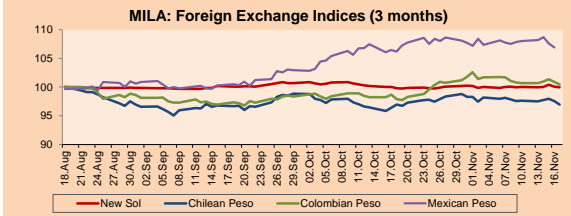
* Market Cap. Of the last price *Legend: Variation 1D: 1 day; 5D: 5 days; 1M: 1 Month; YTD: Var%12/31/16 to date



Source: Bloomberg

Currency	Price	1D*	5D*	30 D*	YTD*
▼ New Sol (PEN)	3,242.00	-0.13%	-0.05%	0.15%	-3.40%
▼ Chilean Peso (CLP)	626.85	-0.59%	-0.65%	0.02%	-6.50%
▼ Colombian Peso (COP)	3,001.50	-0.46%	-0.21%	2.63%	-0.02%
▼ Mexican Peso (MXN)	18.94	-0.61%	-0.85%	0.44%	-8.62%

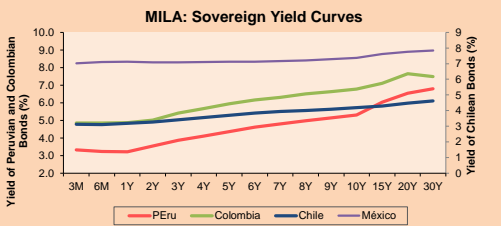
*Legend: Variation 1D: 1 day; 5D: 5 days; 1M: 1 Month; YTD: Var%12/31/16 to date



Base: 18/08/17=100
Source: Bloomberg

Fixed Income

Instrument	Currency	Price	Bid Yield (%)	Ask Yield (%)	Duration
PERU 4.125 08/25/2027	USD	109.682	3.00	2.95	8.09
PERU 7.125 03/30/19	USD	107.548	1.62	1.36	1.30
PERU 7.35 07/21/25	USD	130.77	2.88	2.83	6.07
PERU 8.75 11/21/33	USD	157.48	3.91	3.87	9.95
PERU 6.55 03/14/37	USD	135.647	3.92	3.89	11.79
PERU 5.625 11/19/2050	USD	127.445	4.11	4.09	17.10
CHILE 2.25 10/30/22	USD	98.973	2.52	2.43	4.66
CHILE 3.875 08/05/20	USD	104.74	2.15	1.98	2.55
CHILE 3.625 10/30/2042	USD	99.417	3.67	3.65	16.52
COLOM 11.75 02/25/20	USD	120.81	2.31	2.20	2.01
COLOM 11.85 03/09/28	USD	169.639	3.70	3.64	7.00
COLOM 10.375 01/28/33	USD	157.25	5.07	4.86	9.03
COLOM 7.375 09/18/37	USD	132.16	4.85	4.82	11.59
COLOM 6.125 01/18/41	USD	117.967	4.84	4.81	13.07
MEX 4 10/02/23	USD	104.895	3.10	3.06	5.22
MEX5.55 01/45	USD	112.52	4.741	4.712	14.63



Source: Bloomberg

Equity

Largest gains	Exchange	Amt.	Price	▲%	Largest losses	Exchange	Amt.	Price	▼%
PODERC1	Lima	PEN	9.00	12.50	FINANPC1	Lima	PEN	0.55	-5.17
CMPC	Santia.	CLP	2077.70	5.16	PROMIGAS	Colomb.	COP	7610.00	-4.76
ATACOBC1	Lima	PEN	0.59	3.51	ATACOAC1	Lima	PEN	0.77	-3.75
SQM-B	Santia.	CLP	37233.00	3.35	GRAMONC1	Lima	PEN	2.01	-7.80

Per Turnover	Exchange	Amount (US\$)
FALABELLA	Santia.	26,944,261
PAZ	Santia.	14,398,732
CENCOSUD	Santia.	15,965,095
SQM-B	Santia.	12,814,921
COPEC	Santia.	8,229,717

Per Volume	Exchange	Volume
VAPORES	Santia.	53,260,437
BSANTANDER	Santia.	63,501,042
ORO BLANCO	Santia.	54,264,260
CHILE	Santia.	60,211,675
ESVAL-C	Santia.	15,000,000

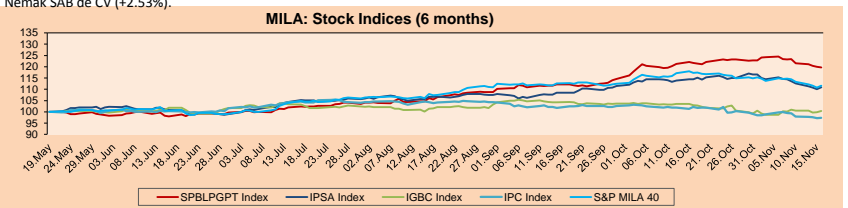
MILA

Peru: The General Index of the BVL of Peru ended today's session with a positive return of +0.68%. The index maintains a cumulative positive annual trend of +25.38% in local currency, while the yield adjusted to foreign currency is +29.79%. Then, the S&P/BVL Peru SEL obtained a positive return of +0.95%, while the S&P/BVL LIMA 25 grew +0.06%. The spot PEN reached S/3.2373.

Chile: The IPSA index ended the day with a positive return of +1.45%. The sectors of the index with the most positive results were Material Products (+3.63%) and Energy (+2.01%). On the other hand, the values with the highest results were Empresas CMPC S.A. (+5.16%) and Forus S.A. (+3.46%).

Colombia: The COLCAP index closed the session with positive results of +0.36%. The sectors with higher yields were Industrial (+1.59%) and Finance (+0.98%). In addition, the stocks with the highest yields were Grupo de Inversiones Suramericana (+2.20%) and Avianca Holding SA (+1.77%).

Mexico: Mexico's IPC index closed today's session with a positive result of +0.22%. The sectors of the index that generated the most positive returns were Finance (+1.54%) and Public Services (+1.24%). Finally, the stocks with the highest yields were Alpek SAB de CV (+4.61%) and Nemak SAB de CV (+2.53%).

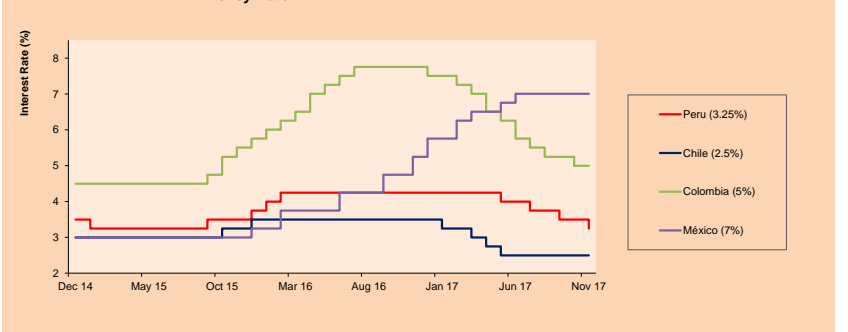


Base: 22/05/17=100
Source: Bloomberg

ETFs

	Curr.	Close	1D	5D	30 D	YTD	Exchange
▲ iShares MSCI All Peru Capped Index Fund	USD	40.76	1.12%	-1.47%	-1.52%	24.27%	NYSE Arca
▲ iShares MSCI Chile Capped	USD	49.96	1.71%	0.87%	-2.35%	33.51%	BATS
▲ Global X MSCI Colombia	USD	13.99	1.30%	0.87%	-4.64%	8.11%	NYSE Arca
▲ iShares MSCI Mexico Capped	USD	50.32	1.08%	1.15%	-3.73%	14.44%	NYSE Arca
▲ iShares MSCI Emerging Markets	USD	46.905	0.68%	1.33%	0.87%	33.98%	NYSE Arca
▲ Vanguard FTSE Emerging Markets	USD	44.94	0.72%	0.78%	-0.04%	25.60%	NYSE Arca
▲ iShares Core MSCI Emerging Markets	USD	56.5965	0.58%	1.28%	1.14%	33.33%	NYSE Arca
▲ iShares JP Morgan Emerging Markets Bonds	USD	60.02	0.44%	0.84%	1.03%	22.72%	BATS
▼ Morgan Stanley Emerging Markets Domestic	USD	7.6826	-0.23%	0.30%	-4.68%	7.15%	New York

MILA: Policy Rate



Source: Bloomberg

PULSO BURSÁTIL

LIMA

Stocks

Ticker	Currency	Price	1D*	5D*	30D*	YTD*	Frequency	Volume (US\$)	Beta	Dividend Yield (%)	Price Earning	Market Cap. (M US\$)	Economic Sector*	Index Weight
▲ ALICORC1 PE**	S/.	9.85	0.51%	-3.43%	-0.51%	34.93%	105.26%	758,347	0.68	1.42	20.66	2,595.17	Industrial	3.53%
▲ ATACOCB1 PE**	S/.	0.59	3.51%	3.51%	-7.81%	47.50%	105.26%	24,597	1.94	0.00	-	200.86	Mining	1.02%
- BACKUSH1 PE**	S/.	18.50	0.00%	2.78%	8.82%	15.63%	84.21%	19,230	0.42	3.23	2.19	8,996.92	Industrial	0.82%
▲ BAP PE**	US\$	208.00	2.16%	0.53%	0.10%	31.48%	105.26%	899,754	1.07	4.12	-	16,529.09	Diverse	5.82%
▲ BVN PE**	US\$	13.55	0.82%	-1.95%	-8.07%	17.83%	105.26%	206,769	1.48	0.62	-	3,729.83	Mining	5.88%
▲ CASAGRC1 PE**	S/.	6.49	0.15%	3.02%	4.68%	-5.12%	105.26%	3,623	0.48	6.22	17.33	168.62	Agricultural	1.31%
- CONTINC1 PE**	S/.	4.28	0.00%	-2.73%	0.47%	18.72%	105.26%	18,470	0.71	3.46	15.73	6,446.56	Finance	2.85%
▲ CORAREH1 PE**	S/.	0.78	1.30%	0.00%	13.04%	59.18%	105.26%	57,709	1.14	2.89	10.42	289.48	Industrial	1.72%
- CPACASC1 PE**	S/.	7.90	0.00%	-4.82%	-5.84%	26.44%	105.26%	1,689,898	0.50	4.43	29.87	1,041.76	Industrial	2.38%
- CVERDEC1 PE**	US\$	28.00	0.00%	-6.29%	2.56%	46.52%	105.26%	442,150	1.26	0.00	39.65	9,801.57	Mining	5.25%
- ENGEPEC1 PE**	S/.	2.10	0.00%	1.94%	-7.89%	-19.23%	84.21%	14,937	0.80	0.00	20.08	1,874.02	Public Services	1.44%
- ENDISPC1**	S/.	5.90	0.00%	-0.84%	3.51%	-4.22%	73.68%	155,915	0.88	0.00	12.74	1,162.10	Public Services	0.98%
▲ FERREYC1 PE**	S/.	2.50	1.21%	-2.34%	6.38%	47.93%	105.26%	1,609,105	0.95	5.14	9.04	782.18	Diverse	4.90%
▼ GRAMONC1 PE**	S/.	2.10	-3.67%	-12.50%	-30.46%	-55.32%	105.26%	7,593	2.18	0.00	82.24	427.55	Diverse	4.05%
- IFS PE**	US\$	38.00	0.00%	-1.22%	-0.26%	18.75%	100.00%	183,103	0.49	0.00	13.52	4,298.21	Diverse	7.22%
- INRETC1 PE**	US\$	21.00	0.00%	-0.71%	9.09%	8.36%	105.26%	3,279,501	1.00	0.93	26.96	2,158.95	Diverse	5.28%
- LUSURC1 PE**	S/.	12.05	0.00%	-3.98%	0.42%	-7.94%	105.26%	2,164	0.65	0.00	14.12	1,809.92	Public Services	1.81%
▼ MILPOC1 PE**	S/.	4.40	-1.57%	-3.08%	0.00%	28.65%	94.74%	22,887	1.08	19.48	9.87	1,801.50	Mining	1.56%
▼ MINSURH1 PE**	S/.	1.90	-2.56%	-5.00%	7.95%	31.03%	100.00%	758,442	1.44	3.63	6.59	1,689.61	Mining	3.09%
▲ PML PE**	US\$	0.31	1.67%	0.66%	-7.58%	121.01%	105.26%	7,015	1.23	0.00	-	78.74	Mining	2.12%
▼ RELAPAC1 PE**	S/.	0.30	-3.23%	-4.76%	7.14%	28.76%	105.26%	135,589	1.23	0.00	4.58	327.10	Industrial	2.12%
▲ SCCO PE**	US\$	42.77	0.09%	-2.75%	-1.45%	32.46%	94.74%	23,224	0.48	1.38	27.77	33,062.43	Mining	2.14%
- SIDERC1 PE**	S/.	0.47	0.00%	-1.25%	-4.24%	43.64%	100.00%	21,511	1.61	0.00	4.22	179.53	Industrial	1.43%
▲ TV PE**	US\$	1.12	1.82%	-2.61%	-7.44%	31.76%	105.26%	61,300	1.68	0.00	-	923.86	Mining	2.93%
▼ UNACEMC1 PE**	S/.	2.95	-1.34%	-1.67%	0.00%	15.23%	105.26%	85,461	0.75	1.76	31.66	1,498.21	Industrial	3.00%
▼ VOLCABC1 PE**	S/.	1.31	-0.76%	-2.96%	-8.39%	81.94%	105.26%	446,381	1.93	1.98	16.85	2,851.38	Mining	5.90%

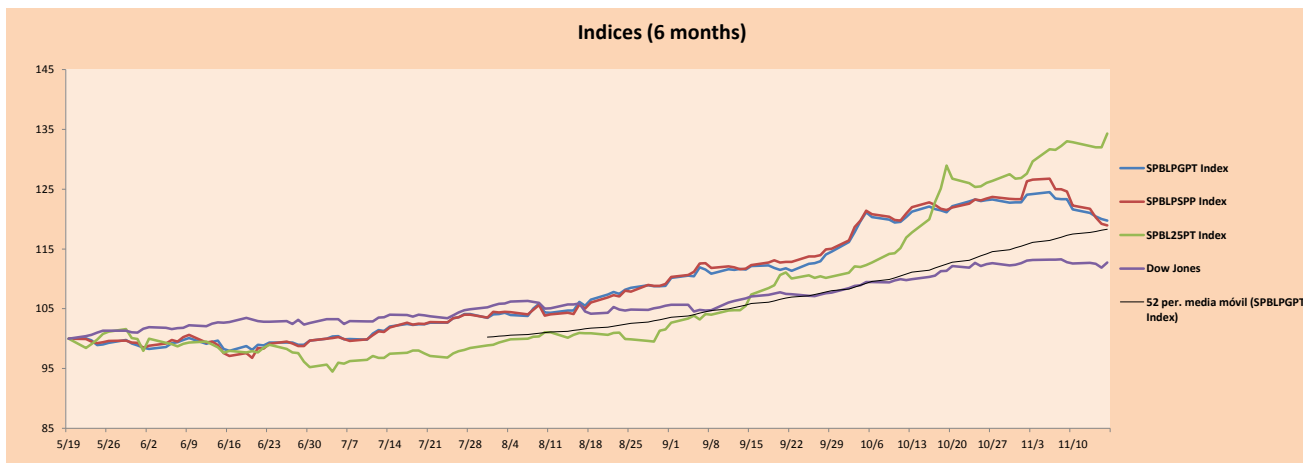
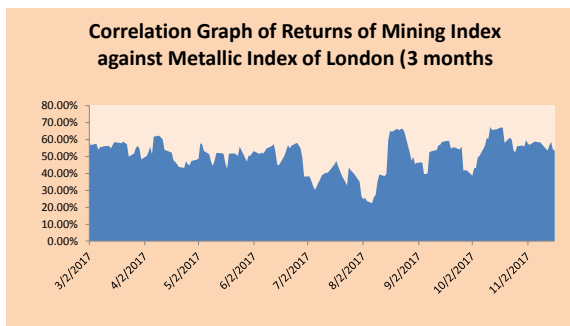
Quantity of shares: 26
Source: Bloomberg, Economática
* Bloomberg Industry Classification System
** PER is used in the stock market and original currency of the instrument

*Legend: Variation 1D: 1 Day; 5D: 5 Days, 1M: 1 Month; YTD: Var.% 12/31/16 to date

Sectorial Indices

	Close	1D*	5D*	30D*	YTD*	Beta
▲ Mining Index	333.57	0.12%	-2.62%	-3.73%	34.31%	1.66
▲ Consumer Index	871.59	0.22%	-1.27%	3.77%	27.99%	0.40
▼ Industrial Index	235.44	-0.45%	-3.45%	-3.43%	6.49%	0.96
▲ Banking and Financial Index	1,068.18	1.76%	2.37%	2.62%	30.88%	0.84
▼ Construction Index	266.86	-1.20%	-3.86%	-8.10%	-9.76%	0.97
- Services Index	425.13	0.00%	-0.46%	-3.91%	-12.13%	0.26
▲ Juniors Index	42.79	0.80%	0.99%	-2.84%	52.49%	1.44
- Electric Index	415.03	0.00%	-0.46%	-3.91%	-12.13%	0.26

*Legend: Variation 1D: 1 Day; 5D: 5 Days, 1M: 1 Month; YTD: Var.% 12/31/16 to date



Source: Bloomberg

Capital Market Laboratory Coodinator: Economist Bruno Bellido Anicama
Support: Sebastián Butters, Kaori Olulo, Jairo Trujillo, Mario Villar
e-mail: pulsoborsatil@ulima.edu.pe
facebook: www.facebook.com/pulsoborsatil.ul
Phone number : 4376767 Anexes: 35340 - 35310

The content of this document is just for informational purposes . The information and opinions expressed should not be consider as recommendations for future decisions .Under any circumstances, the Capital Market Laboratory of University of Lima will be responsible for the use of the statements in this document.

PULSO BURSÁTIL

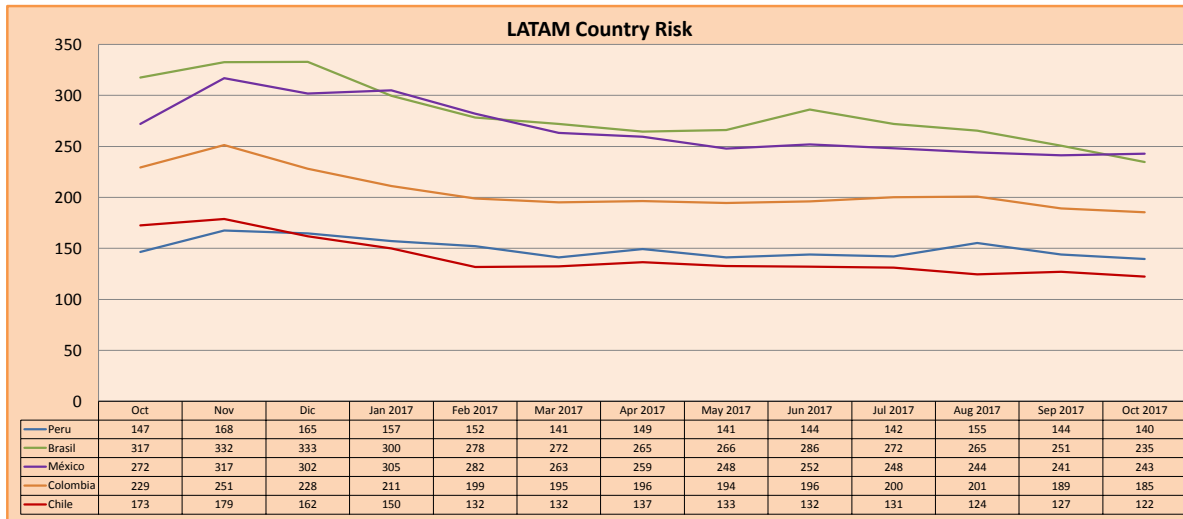
SOVEREIGN RATING

RISK RATINGS			
Moody's	S&P	Fitch	
Aaa	AAA	AAA	Prime
Aa1	AA+	AA+	High credit quality
Aa2	AA	AA	
Aa3	AA-	AA-	
A1	A+	A+	Medium-high grade, with low credit risk
A2	A	A	
A3	A-	A-	
Baa1	BBB+	BBB+	Moderate Credit Risk
Baa2	BBB	BBB	
Baa3	BBB-	BBB-	
Ba1	BB+	BB+	It has speculative elements and it is subject to substantial credit risk
Ba2	BB	BB	
Ba3	BB-	BB-	
B1	B+	B+	It is considered speculative and it has high credit risk
B2	B	B	
B3	B-	B-	
Caa1	CCC+		Bad credit conditions and it is subject to high credit risk
Caa2	CCC		
Caa3	CCC-	CCC	
Ca	CC		Very close to default or in default
	C		
C	D	DDD DD D	

Source: Bloomberg

Latin America Credit Rating			
Clasificadora de riesgo			
Country	Moody's	Fitch	S&P
Peru	A3	BBB+	BBB+
Mexico	A3	BBB+	BBB+
Venezuela	Caa3	RD	SD
Brazil	Ba2	BB	BB
Colombia	Baa2	BBB	BBB
Chile	Aa3	A	A+
Argentine	B3	B	B+
Panama	Baa2	BBB	BBB

Source: Bloomberg



Source: Bloomberg

Capital Market Laboratory Coordinator: Economist Bruno Bellido Anicama
 Support: Sebastián Butters, Kaori Olulo, Jairo Trujillo, Mario Villar
 e-mail: pulsobursatil@ulima.edu.pe
 facebook: www.facebook.com/pulsobursatil.ul
 Phone number : 4376767 Anexes: 35340 - 35310

The content of this document is just for informational purposes. The information and opinions expressed should not be considered as recommendations for future decisions. Under any circumstances, the Capital Market Laboratory of University of Lima will be responsible for the use of the statements in this document.