



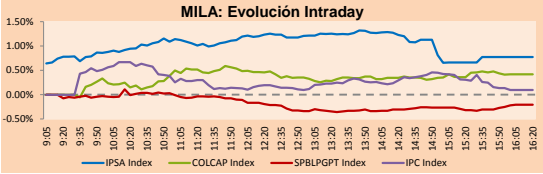
PULSO BURSÁTIL

Lima, november 16, 2017

MILA

Main Indices	Close	1 D	5 D	1 M	YTD	Market Cap. (US\$ bill)
▲ IPISA (Chile)	5,314.53	0.77%	-2.38%	-3.08%	28.02%	202.65
▲ IGPA (Chile)	26,789.54	0.75%	-2.23%	-2.53%	29.20%	234.16
▲ IGBC (Colombia)	10,750.67	0.53%	0.22%	-2.54%	6.38%	94.15
▲ COLCAP (Colombia)	1,436.59	0.42%	0.13%	-3.00%	6.28%	96.10
▼ S&P/BVL (Perú)*	19,385.70	-0.21%	-2.89%	-1.57%	24.53%	100.90
▼ S&P/BVL SEL (Perú)	355.04	-0.23%	-4.55%	-3.14%	19.15%	79.27
▼ S&P/BVL LIMA 25	30,459.69	-0.10%	-4.86%	-2.88%	29.18%	93.25
▼ IPC (México)	47,747.69	0.12%	-1.98%	-4.77%	4.61%	298.60
▲ S&P MILA 40	680.80	0.44%	-1.79%	-5.15%	22.51%	282.66

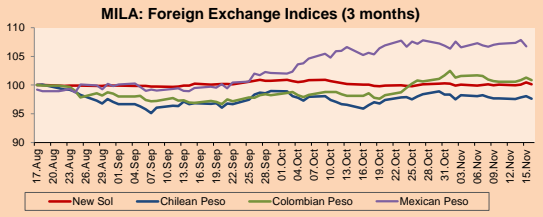
* Market Cap. Of the last price Legend: Variation 1D: 1 day; 5D: 5 days; 1M: 1 Month; YTD: Var%12/31/16 to date



Source: Bloomberg

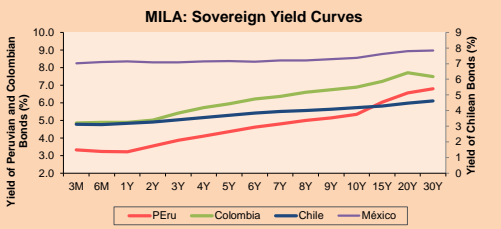
Currency	Price	1D*	5D*	30 D*	YTD*
▼ New Sol (PEN)	3,2463	-0.33%	0.15%	0.04%	-3.27%
▼ Chilean Peso (CLP)	630.58	-0.44%	-0.03%	1.17%	-5.94%
▼ Colombian Peso (COP)	3,015.50	-0.44%	0.12%	2.30%	0.45%
▼ Mexican Peso (MXN)	19.06	-1.01%	0.06%	1.42%	-8.06%

*Legend: Variation 1D: 1 day; 5D: 5 days; 1M: 1 Month; YTD: Var%12/31/16 to date



Base: 17/08/17=100
Source: Bloomberg

Instrument	Currency	Price	Bid Yield (%)	Ask Yield (%)	Duration
PERU 4.125 08/25/2027	USD	109.615	3.00	2.96	8.10
PERU 7.125 03/30/19	USD	107.658	1.55	1.29	1.31
PERU 7.35 07/21/25	USD	130.63	2.90	2.85	6.08
PERU 8.75 11/21/33	USD	157.1	3.94	3.89	9.97
PERU 6.55 03/14/37	USD	134.965	3.96	3.93	11.80
PERU 5.625 11/19/2050	USD	127.185	4.13	4.10	16.75
CHILE 2.25 10/30/22	USD	98.943	2.52	2.43	4.67
CHILE 3.875 08/05/20	USD	104.823	2.10	1.97	2.56
CHILE 3.625 10/30/2042	USD	99.068	3.71	3.66	16.53
COLOM 11.75 02/25/20	USD	120.842	2.29	2.21	2.02
COLOM 11.85 03/09/28	USD	169.288	3.73	3.67	7.00
COLOM 10.375 01/28/33	USD	156.75	5.10	4.89	9.04
COLOM 7.375 09/18/37	USD	131.645	4.89	4.85	11.58
COLOM 6.125 01/18/41	USD	117.577	4.87	4.84	13.05
MEX 4 10/02/23	USD	104.787	3.12	3.08	5.23
MEX5.55 01/45	USD	112.067	4.769	4.739	14.6



Source: Bloomberg

Equity	Exchange	Amt.	Price	▲%
Largest gains				
CIC	Santia.	CLP	23.10	9.48
CAMANCHACA	Santia.	CLP	40.75	7.24
INVERCAP	Santia.	CLP	2100.00	5.31
Enjoy	Santia.	CLP	73.00	4.30

Largest losses	Exchange	Amt.	Price	▼%
COLOSO	Santia.	CLP	335.00	-15.83
MARINSA	Santia.	CLP	45.00	-8.16
FOSFOROS	Santia.	CLP	1200.00	-4.76
CARTAVCV1	Lima	PEN	10.50	-4.55

Per Turnover	Exchange	Amount (US\$)
FALABELLA	Santia.	36,912,192
COPEC	Santia.	32,689,524
CENCOSUD	Santia.	15,577,199
SQM-B	Santia.	14,666,255
CMPC	Santia.	11,200,612

Per Volume	Exchange	Volume
VAPORES	Santia.	141,128,529
BSANTANDER	Santia.	126,155,143
ORO BLANCO	Santia.	100,855,204
CHILE	Santia.	49,358,853
MASISA	Santia.	34,846,855

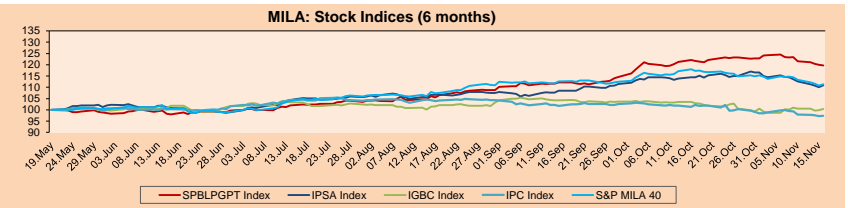
MILA

Peru: The General Index of the BVL of Peru ended today's session with a negative return of -0.21%. The index maintains a cumulative positive annual trend of +24.53% in local currency, while the yield adjusted to foreign currency is +28.74%. Then, the S&P/BVL Peru SEL obtained a negative result of -0.23%, while the S&P/BVL LIMA 25 decreased -0.10%. The spot PEN reached S/3.2463.

Chile: The IPISA index ended the day with a positive result of +0.77%. The sectors of the index with the most positive results were Information Technology (+2.36%) and Industrial (+2.35%). On the other hand, the securities with the most bullish results were Lan Airlines SA (+4.91%) and Sociedad de Inversiones Oro Blanco SA (+4.17%).

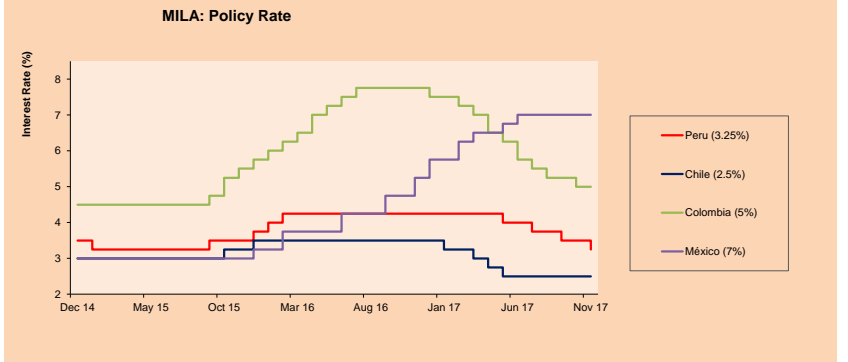
Colombia: The COLCAP index closed the session with positive results of +0.42%. The sectors with higher yields were Industrial (+2.84%) and Public Services (+0.66%). In addition, the stocks with the highest yields were Avianca Holdings SA (+3.48%) and BanColombia (+1.43%).

Mexico: Mexico's IPC index closed today's session with a positive return of +0.12%. The sectors of the index that generated the most positive returns were Telecommunications Services (+0.99%) and Industrial Services (+0.97%). Finally, the stocks with the highest yields were Alpek SAB de CV (+5.14%) and Nemark SAB de CV (+3.30%).



Base: 22/05/17=100
Source: Bloomberg

ETFs	Curr.	Close	1D	5D	30 D	YTD	Exchange
▼ iShares MSCI All Peru Capped Index Fund	USD	40.31	-0.05%	-3.89%	-2.47%	22.90%	NYSE Arca
▲ iShares MSCI Chile Capped	USD	49.12	2.04%	-1.62%	-4.21%	31.27%	BATS
▲ Global X MSCI Colombia	USD	13.81	0.73%	-0.36%	-5.48%	6.72%	NYSE Arca
▲ iShares MSCI Mexico Capped	USD	49.78	1.26%	-1.95%	-5.76%	13.21%	NYSE Arca
▲ iShares MSCI Emerging Markets	USD	46.69	2.08%	0.22%	0.43%	33.08%	NYSE Arca
▲ Vanguard FTSE Emerging Markets	USD	44.62	1.78%	-0.31%	-0.67%	24.71%	NYSE Arca
▲ iShares Core MSCI Emerging Markets	USD	56.27	1.96%	0.34%	0.73%	32.56%	NYSE Arca
▲ iShares JP Morgan Emerging Markets Bonds	USD	59.76	1.48%	0.20%	0.35%	22.18%	BATS
▲ Morgan Stanley Emerging Markets Domestic	USD	7.7	1.72%	-0.13%	-4.82%	7.39%	New York



Source: Bloomberg

Capital Market Laboratory Coordinator: Economist Bruno Bellido Anicam
Support: Sebastián Butters, Kaori Olulou, Jairo Trujillo, Mario Villar
e-mail: pulsobursatil@ulima.edu.pe
facebook: www.facebook.com/pulsobursatil.ul
Phone number : 4376767 Anexx: 35340 - 35310



PULSO BURSÁTIL

WORLD

Table with columns: Main Indices, Close, 1 D*, 5 D*, 1 M*, YTD*, Market Cap. (US\$ Mill.). Lists indices like Dow Jones (USA), Standard & Poor's 500 (USA), NASDAQ Composite (USA), etc.

Equity

Table with columns: Largest gains, Curr., Price, %▲, Exchange, Largest losses, Curr., Price, %▼, Exchange. Lists stocks like WMT UN, SJM UN, PYPL UW, etc.

Global Overview

United States:

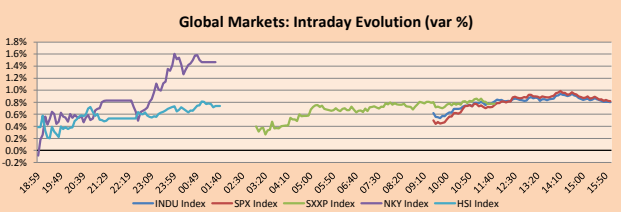
The US stock market ended the session with positive results, the good business results obtained today. In more detail, Wal-Mart Stores Inc. +10.49% rose 8.6% after the retailer posted stronger-than-expected earnings early Thursday.

Europe:

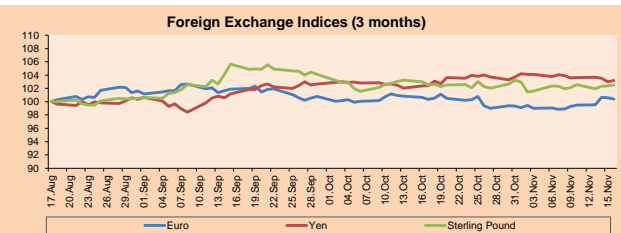
The European stock market closed the day with positive results among its main indices. European stocks managed to get out of their losing streak, thanks to well received corporate updates.

Asia:

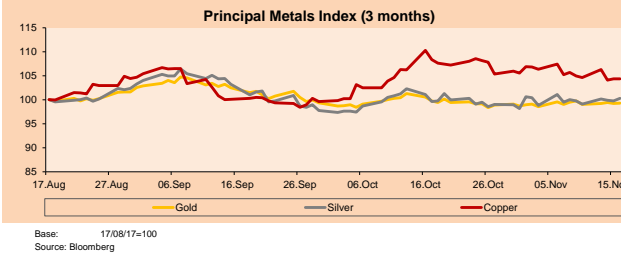
The Asian stock market ended today's session with mixed results among its main indices, most of which were positive. Among the news that stood out most, in Hong Kong, stocks increased thanks to the fact that Tencent, a company that weighs heavily in the technology sector, had an increase of 2.1%.



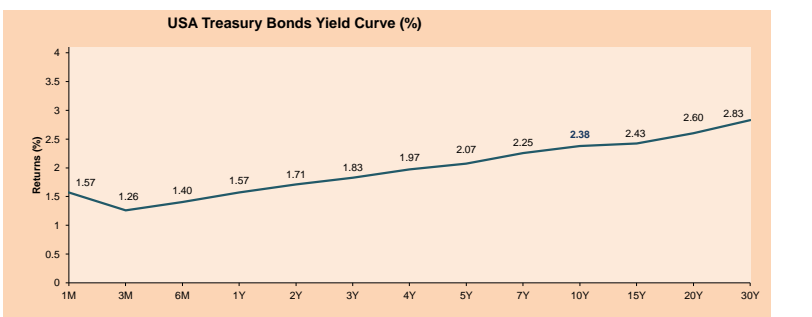
Currency table with columns: Currency, Price, 1 D*, 5 D*, 1 M*, YTD*. Lists Euro, Yen, Sterling Pound, Yuan, Hong Kong Dollar, Brazilian Real, Argentine Peso.



Commodities table with columns: Commodity, Close, 1 D*, 5 D*, 1 M*, YTD*. Lists Oro (US\$ Oz. T) (LME), Plata (US\$ Oz. T) (LME), Cobre (US\$ TM) (LME), etc.



ETFs table with columns: ETF Name, Curr., Close, 1D, 5D, 30 D, YTD, Exchange. Lists SPDR S&P 500 ETF TRUST, ISHARES MSCI EMERGING MARKET, etc.



Capital Market Laboratory Coordinator: Economist Bruno Bellido Anicama
Support: Sebastián Butters, Kaori Olulio, Jairo Trujillo, Mario Villar
e-mail: pulsobursatil@ulima.edu.pe
facebook: www.facebook.com/pulsobursatil
Phone number : 4376767 Anexos: 35340 - 35310

The content of this document is just for informational purposes. The information and opinions expressed should not be considered as recommendations for future decisions. Under any circumstances, the Capital Market Laboratory of University of Lima will be responsible for the use of the statements in this document.

PULSO BURSÁTIL

LIMA

Stocks

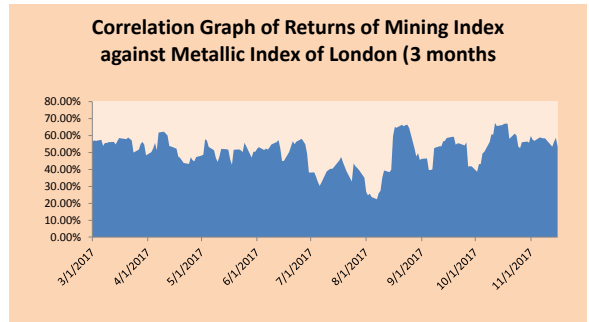
Ticker	Currency	Price	1D*	5D*	30D*	YTD*	Frequency	Volume (US\$)	Beta	Dividend Yield (%)	Price Earning	Market Cap. (M US\$)	Economic Sector*	Index Weight
▼ ALICORC1 PE**	S/.	9.80	-0.51%	-4.85%	-1.90%	34.25%	100.00%	609,397	0.68	1.43	20.56	2,578.69	Industrial	3.53%
ATACOCB1 PE**	S/.	0.57	0.00%	-3.39%	-10.94%	42.50%	100.00%	22,475	1.94	0.00	-	202.80	Mining	1.02%
- BACKUSH1 PE**	S/.	18.50	0.00%	2.83%	8.82%	15.63%	89.47%	2,946	0.42	3.23	2.81	8,985.00	Industrial	0.82%
▲ BAP PE**	US\$	203.60	0.37%	0.23%	0.23%	31.78%	100.00%	65,000	1.07	4.21	-	16,179.44	Diverse	5.82%
▼ BVN PE**	US\$	13.44	-1.54%	-5.02%	-9.49%	16.87%	100.00%	203,427	1.48	0.62	-	3,699.59	Mining	5.88%
▼ CASAGRC1 PE**	S/.	6.48	-0.15%	4.52%	6.23%	-5.26%	100.00%	3,930	0.48	6.23	17.31	168.14	Agricultural	1.31%
- CONTINC1 PE**	S/.	4.28	0.00%	-4.89%	-0.47%	18.72%	100.00%	87,604	0.71	3.46	15.98	6,438.02	Finance	2.85%
▲ CORAREH1 PE**	S/.	0.77	1.32%	0.00%	11.59%	57.14%	100.00%	6,715	1.15	2.92	13.07	288.48	Industrial	1.72%
- CPACASC1 PE**	S/.	7.90	0.00%	-6.18%	-5.95%	26.44%	100.00%	521,946	0.50	4.43	29.87	1,040.38	Industrial	2.38%
▼ CVERDEC1 PE**	US\$	28.00	-1.75%	-6.67%	3.70%	46.52%	100.00%	380,191	1.25	0.00	39.65	9,801.57	Mining	5.25%
▼ ENDEPEC1 PE**	S/.	2.10	-2.33%	-2.33%	-9.87%	-19.23%	84.21%	14,918	0.80	3.04	36.21	1,871.54	Public Services	1.44%
- ENDISPC1**	S/.	5.90	0.00%	-0.84%	3.51%	-4.22%	73.68%	155,709	0.88	0.00	12.74	1,160.56	Public Services	0.98%
▲ FERREYC1 PE**	S/.	2.47	1.65%	-3.52%	4.22%	46.15%	100.00%	545,763	0.96	5.20	8.93	771.77	Diverse	4.90%
▼ GRAMONC1 PE**	S/.	2.18	-0.91%	-29.68%	-28.76%	-53.62%	100.00%	8,479	2.17	0.00	85.37	443.25	Diverse	4.05%
▲ IFS PE**	US\$	38.00	0.93%	-1.27%	-0.39%	18.75%	100.00%	183,103	0.49	3.42	13.54	4,298.21	Diverse	7.22%
▼ INRETC1 PE**	US\$	21.00	-0.94%	0.00%	9.09%	8.36%	100.00%	736,276	1.00	0.93	26.91	2,158.95	Diverse	5.28%
▼ LUSURC1 PE**	S/.	12.05	-2.03%	-3.98%	0.84%	-7.94%	94.74%	15,815	0.64	5.15	13.89	1,807.52	Public Services	1.81%
▼ MILPOC1 PE**	S/.	4.47	-0.45%	-1.54%	3.71%	30.70%	89.47%	102,627	1.08	19.17	10.31	1,827.35	Mining	1.56%
▼ MINSURH1 PE**	S/.	1.95	-1.02%	-4.88%	7.14%	34.48%	100.00%	241,228	1.44	3.53	6.75	1,731.77	Mining	3.09%
▼ PML PE**	US\$	0.30	-3.23%	0.00%	-12.54%	117.39%	94.74%	13,850	1.23	0.00	-	77.44	Mining	2.12%
- RELAPAC1 PE**	S/.	0.31	0.00%	-1.59%	11.91%	33.05%	100.00%	4,011	1.23	0.00	4.73	337.56	Industrial	2.12%
▲ SCCO PE**	US\$	42.73	1.02%	-2.89%	-1.68%	32.33%	94.74%	68,368	1.38	27.75	33,031.51	Mining	2.14%	
▼ SIDERC1 PE**	S/.	0.47	-0.21%	0.42%	-4.24%	43.64%	100.00%	21,482	1.61	0.00	7.28	179.29	Industrial	1.43%
- TV PE**	US\$	1.10	0.00%	-7.56%	-7.56%	29.41%	94.74%	40,970	1.68	0.00	-	907.36	Mining	2.93%
- UNACEMC1 PE**	S/.	2.99	0.00%	-0.66%	1.36%	16.80%	100.00%	534,147	0.76	1.74	48.10	1,516.51	Industrial	3.00%
▲ VOLCABC1 PE**	S/.	1.32	1.54%	-5.71%	-6.38%	83.33%	100.00%	481,087	1.95	1.96	16.96	2,855.13	Mining	5.90%

Quantity of shares: 26
 Source: Bloomberg, Economática
 * Bloomberg Industry Classification System
 ** PER is used in the stock market and original currency of the instrument
 *Legend: Variation 1D: 1 Day; 5D: 5 Days, 1M: 1 Month; YTD: Var.% 12/31/16 to date

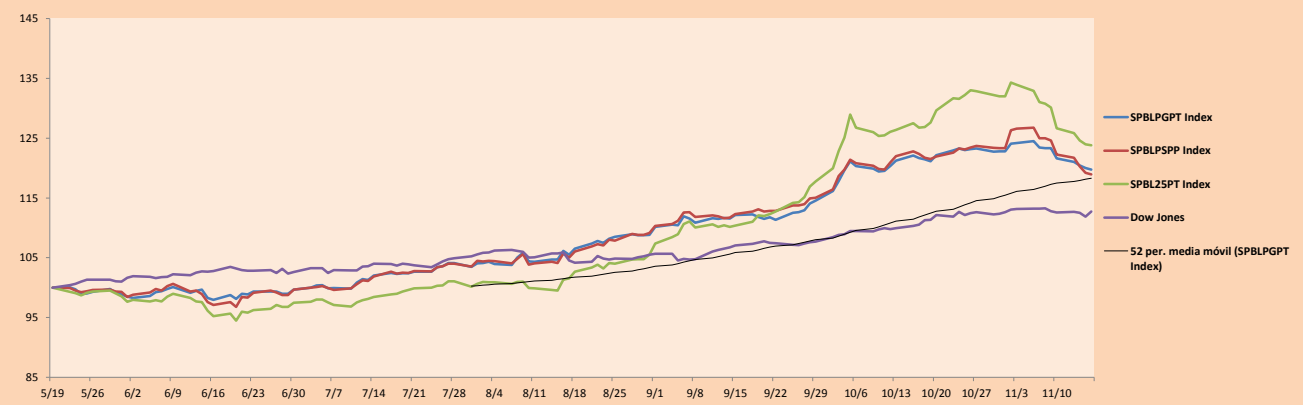
Sectorial Indices

	Close	1D*	5D*	30D*	YTD*	Beta
▼ Mining Index	333.17	-0.35%	-4.06%	-3.90%	34.15%	1.66
▼ Consumer Index	869.67	-0.60%	-1.75%	3.05%	27.70%	0.40
▲ Industrial Index	236.50	0.55%	-7.22%	-3.32%	6.97%	0.96
▲ Banking and Financial Index	1,049.75	0.08%	0.07%	0.51%	28.62%	0.84
▲ Construction Index	270.09	0.02%	-9.16%	-7.36%	-8.66%	0.97
▼ Services Index	425.13	-1.09%	-2.26%	-4.33%	-12.13%	0.26
▼ Juniors Index	42.45	-3.52%	-1.28%	-7.23%	51.28%	1.44
▼ Electric Index	415.03	-1.09%	-2.26%	-4.34%	-12.13%	0.26

*Legend: Variation 1D: 1 Day; 5D: 5 Days, 1M: 1 Month; YTD: Var.% 12/31/16 to date



Indices (6 months)



Source: Bloomberg

Capital Market Laboratory Coodinator: Economist Bruno Bellido Anicama
 Support: Sebastián Butters, Kaori Olulo, Jairo Trujillo, Mario Villar
 e-mail: pulsoborsatil@ulima.edu.pe
 facebook: www.facebook.com/pulsoborsatil.ul
 Phone number : 4376767 Anexes: 35340 - 35310

The content of this document is just for informational purposes . The information and opinions expressed should not be consider as recommendations for future decisions .Under any circumstances, the Capital Market Laboratory of University of Lima will be responsible for the use of the statements in this document.

PULSO BURSÁTIL

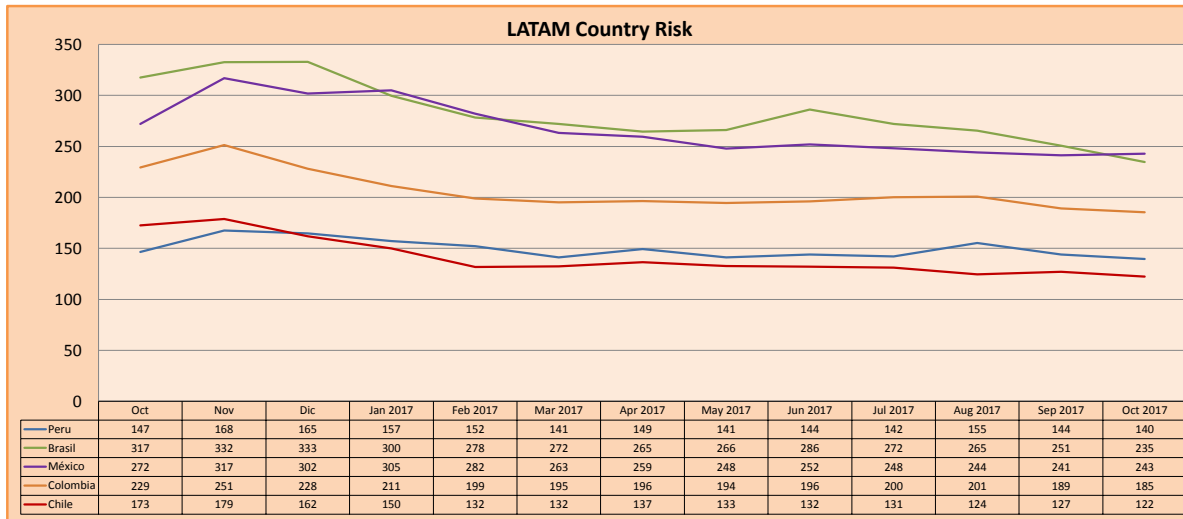
SOVEREIGN RATING

RISK RATINGS			
Moody's	S&P	Fitch	
Aaa	AAA	AAA	Prime
Aa1	AA+	AA+	High credit quality
Aa2	AA	AA	
Aa3	AA-	AA-	
A1	A+	A+	Medium-high grade, with low credit risk
A2	A	A	
A3	A-	A-	
Baa1	BBB+	BBB+	Moderate Credit Risk
Baa2	BBB	BBB	
Baa3	BBB-	BBB-	
Ba1	BB+	BB+	It has speculative elements and it is subject to substantial credit risk
Ba2	BB	BB	
Ba3	BB-	BB-	
B1	B+	B+	It is considered speculative and it has high credit risk
B2	B	B	
B3	B-	B-	
Caa1	CCC+		Bad credit conditions and it is subject to high credit risk
Caa2	CCC		
Caa3	CCC-	CCC	
Ca	CC		Very close to default or in default
	C		
C	D	DDD DD D	

Source: Bloomberg

Latin America Credit Rating			
Clasificadora de riesgo			
Country	Moody's	Fitch	S&P
Peru	A3	BBB+	BBB+
Mexico	A3	BBB+	BBB+
Venezuela	Caa3	RD	SD
Brazil	Ba2	BB	BB
Colombia	Baa2	BBB	BBB
Chile	Aa3	A	A+
Argentine	B3	B	B+
Panama	Baa2	BBB	BBB

Source: Bloomberg



Source: Bloomberg

Capital Market Laboratory Coordinator: Economist Bruno Bellido Anicama
Support: Sebastián Butters, Kaori Olulo, Jairo Trujillo, Mario Villar
e-mail: pulsobursatil@ulima.edu.pe
facebook: www.facebook.com/pulsobursatil.ul
Phone number : 4376767 Anexes: 35340 - 35310

The content of this document is just for informational purposes. The information and opinions expressed should not be considered as recommendations for future decisions. Under any circumstances, the Capital Market Laboratory of University of Lima will be responsible for the use of the statements in this document.