



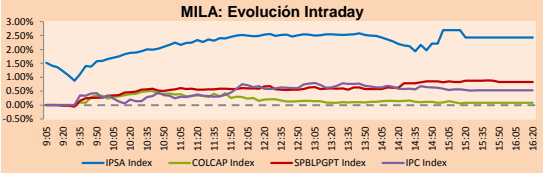
# PULSO BURSÁTIL

Lima, november 21, 2017

## MILA

Main Indices	Close	1 D	5 D	1 M	YTD	Market Cap. (US\$ bill)
▲ IPSA (Chile)	5,199.04	2.42%	-2.06%	-5.88%	25.24%	193.03
▲ IGPA (Chile)	26,150.52	2.13%	-2.28%	-5.50%	26.12%	223.44
▲ IGBC (Colombia)	10,828.30	0.15%	1.50%	-0.70%	7.14%	95.44
▲ COLCAP (Colombia)	1,447.40	0.07%	1.55%	-1.21%	7.07%	97.48
▲ S&P/BVL (Perú)*	19,753.51	0.96%	1.32%	-0.06%	26.91%	101.78
▲ S&P/BVL SEL (Perú)	359.68	1.20%	0.20%	-1.18%	20.71%	80.25
▲ S&P/BVL LIMA 25	30,702.66	1.33%	0.15%	-3.74%	30.18%	94.09
▲ IPC (México)	48,100.32	0.70%	0.21%	-3.77%	5.39%	305.01
▲ S&P MILA 40	683.89	2.03%	0.16%	-4.26%	23.08%	277.54

\* Market Cap. Of the last price Legend: Variation 1D: 1 day; 5D: 5 days; 1M: 1 Month; YTD: Var%12/31/16 to date

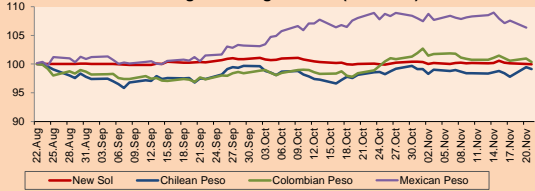


Source: Bloomberg

Currency	Price	1D*	5D*	30 D*	YTD*
▼ New Sol (PEN)	3,2365	-0.07%	-0.23%	-0.07%	-3.56%
▼ Chilean Peso (CLP)	635.30	-0.33%	0.53%	1.00%	-5.24%
▼ Colombian Peso (COP)	2,996.08	-0.61%	-0.69%	2.00%	-0.20%
▼ Mexican Peso (MXN)	18.79	-1.0%	-1.98%	-1.11%	-9.37%

\*Legend: Variation 1D: 1 day; 5D: 5 days; 1M: 1 Month; YTD: Var%12/31/16 to date

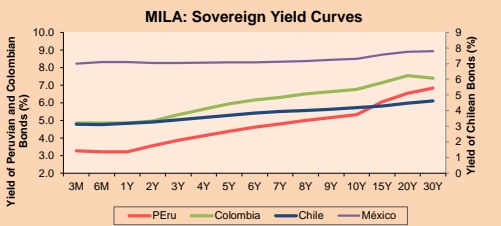
### MILA: Foreign Exchange Indices (3 months)



Base: 22/08/17=100  
Source: Bloomberg

### Fixed Income

Instrument	Currency	Price	Bid Yield (%)	Ask Yield (%)	Duration
PERU 4.125 08/25/2027	USD	109.85	2.98	2.93	8.08
PERU 7.125 03/30/19	USD	107.503	1.62	1.36	1.29
PERU 7.35 07/21/25	USD	130.728	2.88	2.83	6.06
PERU 8.75 11/21/33	USD	157.725	3.90	3.85	10.23
PERU 6.55 03/14/37	USD	135.875	3.91	3.87	11.79
PERU 5.625 11/19/2050	USD	127.988	4.09	4.06	17.10
CHILE 2.25 10/30/22	USD	98.708	2.57	2.49	4.65
CHILE 3.875 08/05/20	USD	104.64	2.15	2.04	2.54
CHILE 3.625 10/30/2042	USD	99.247	3.69	3.66	16.46
COLOM 11.75 02/25/20	USD	120.592	2.36	2.27	2.00
COLOM 11.85 03/09/28	USD	169.772	3.69	3.62	7.00
COLOM 10.375 01/28/33	USD	157.5	5.05	4.84	9.02
COLOM 7.375 09/18/37	USD	132.46	4.84	4.79	11.59
COLOM 6.125 01/18/41	USD	118.382	4.82	4.78	13.06
MEX 4 10/02/23	USD	104.985	3.09	3.04	5.22
MEX5.55 01/45	USD	113.452	4.685	4.656	14.65



Source: Bloomberg

### Equity

Largest gains	Exchange	Amt.	Price	▲%
ATACOCBC1	Lima	PEN	0.60	11.11
CAMANACHACA	Santia.	CLP	40.16	5.68
CAP	Santia.	CLP	6351.70	5.62
SQM-B	Santia.	CLP	36458.00	5.50

Largest losses	Exchange	Amt.	Price	▼%
CAUCHOI1	Lima	PEN	1.30	-13.33
SM-CHILE E	Santia.	CLP	85.00	-9.86
BESALCO	Santia.	CLP	490.52	-8.32
SCHWAGER	Santia.	CLP	0.74	-7.50

### Per Turnover

	Exchange	Amount (US\$)
SQM-B	Santia.	16,131,906
FALABELLA	Santia.	15,056,901
PFDAVWVDA	Colomb.	11,422,122
SALFACORP	Santia.	9,463,997
BESALCO	Santia.	9,007,697

### Per Volume

	Exchange	Volume
BSANTANDER	Santia.	110,956,502
VAPORES	Santia.	93,217,349
ORO BLANCO	Santia.	91,009,830
CHILE	Santia.	56,571,632
AGUAS-A	Santia.	14,147,726

### MILA

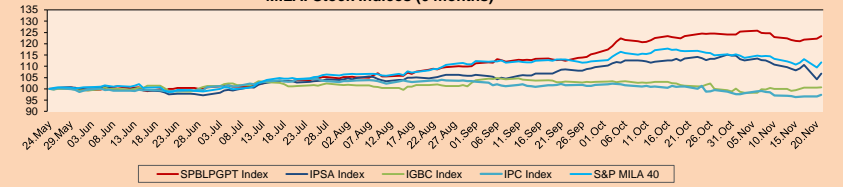
Perú: The General Index of the BVL of Peru ended today's session with a positive return of +0.94%. The index maintains a cumulative positive annual trend of +26.83% in local currency, while the yield adjusted to foreign currency is +31.51%. Then, the S&P/BVL Peru SEL obtained a positive return of +1.20%, while the S&P/BVL LIMA 25 grew +1.33%. The spot PEN reached S/3.2360.

Chile: The IPSA index ended the day with a positive return of +2.42%. The sectors of the index with the most positive results were Telecommunications Services (+4.11%) and Materials (+3.75%). On the other hand, the values with the highest results were AES Gener S.A. (+5.89%) and CAP SA. (+5.62%).

Colombia: The COLCAP index closed the session with positive results of +0.15%. The sectors with higher yields were Industrial (+0.27%) and Finance (+0.05%). In addition, the stocks with the highest yields were Cementos Argos S.A. (+2.19%) and BanColombia S.A. (+0.69%)

Mexico: Mexico's CPI index closed today with a positive result of +0.70%. The sectors of the index that generated the most positive returns were Health (+3.06%) and Products of First Need (+1.45%). Finally, the stocks with the highest yields were Alsea SAB de CV (+4.81%) and Grupo Financiero Inbursa SAB de CV (+3.44%)

### MILA: Stock Indices (6 months)

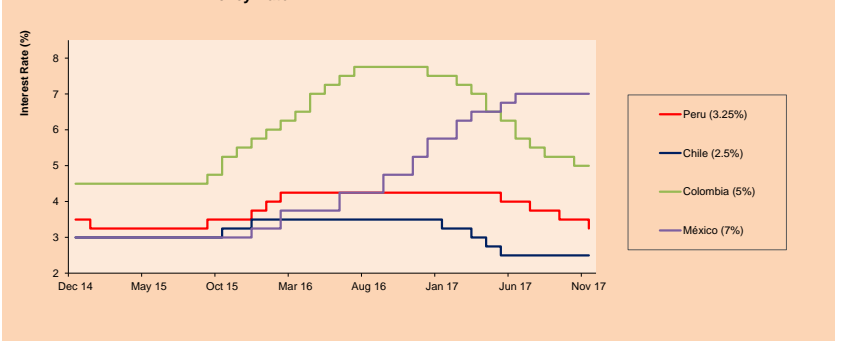


Base: 25/05/17=100  
Source: Bloomberg

### ETFs

	Curr.	Close	1D	5D	30 D	YTD	Exchange
▲ iShares MSCI All Peru Capped Index Fund	USD	41.305	1.14%	1.36%	-0.59%	25.93%	NYSE Arca
▲ iShares MSCI Chile Capped	USD	47.709	2.05%	-1.57%	-6.58%	27.50%	BATS
▲ Global X MSCI Colombia	USD	13.9008	0.15%	1.69%	-4.13%	7.43%	NYSE Arca
▲ iShares MSCI Mexico Capped	USD	51.1	2.20%	3.44%	-1.67%	16.22%	NYSE Arca
▲ iShares MSCI Emerging Markets	USD	47.74	1.44%	4.05%	3.20%	36.36%	NYSE Arca
▲ Vanguard FTSE Emerging Markets	USD	45.685	1.39%	3.36%	1.95%	27.68%	NYSE Arca
▲ iShares Core MSCI Emerging Markets	USD	57.5572	1.37%	3.74%	3.30%	35.59%	NYSE Arca
▲ iShares JP Morgan Emerging Markets Bonds	USD	60.4447	0.98%	2.14%	1.98%	23.58%	BATS
▲ Morgan Stanley Emerging Markets Domestic	USD	7.72	0.13%	1.58%	-3.74%	7.67%	New York

### MILA: Policy Rate



Source: Bloomberg

Capital Market Laboratory Coordinator: Economist Bruno Bellido Anicama  
Support: Sebastián Butters, Kaori Olulou, Jairo Trujillo, Mario Villar  
e-mail: pulsobursatil@ulima.edu.pe  
facebook: www.facebook.com/pulsobursatil.ul  
Phone number : 4376767 Anexx: 35340 - 35310



UNIVERSIDAD DE LIMA

Facultad de Ciencias Empresariales y Económicas

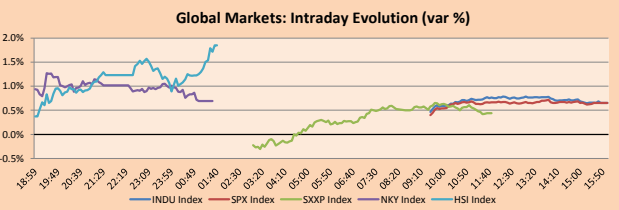
Carrera de Economía

Laboratorio de Mercado de Capitales

PULSO BURSÁTIL

WORLD

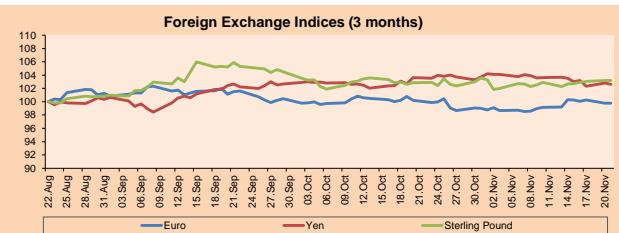
Table with Main Indices, Close, 1D, 5D, 1M, YTD, Market Cap. (US\$ Mill.) columns. Lists indices like Dow Jones, Standard & Poor's 500, NASDAQ Composite, etc.



Source: Bloomberg

Table with Currency, Price, 1D, 5D, 1M, YTD columns. Lists currencies like Euro, Yen, Sterling Pound, Yuan, etc.

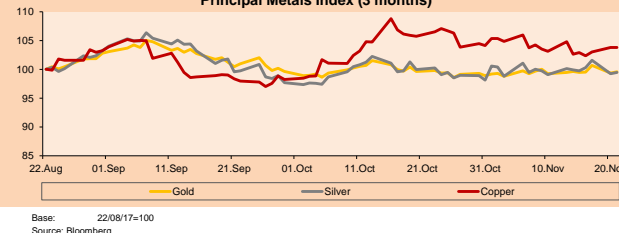
Source: Bloomberg



Source: Bloomberg

Table with Commodities, Close, 1D, 5D, 1M, YTD columns. Lists commodities like Oro, Plata, Cobres, Zinc, etc.

Source: Bloomberg



Source: Bloomberg

Equity

Wall Street (Stocks from S&P 500)

Table with Largest gains, Curr., Price, % change, Exchange columns. Lists TRIP UW, MDT UN, VIAB UW, CSRA UN.

Europe (Stocks from STOXX EUROPE 600)

Table with Largest gains, Curr., Price, % change, Exchange columns. Lists EZJ LN, TISS NO, QIA CY, BTG LN.

Global Overview

United States:

The US stock market ended the session with positive results among its main indices. Noteworthy is the performance of the Nasdaq Composite benchmark index, which reached a historical intraday record.

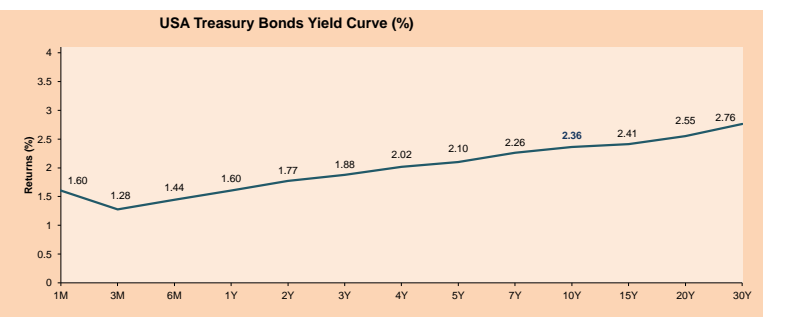
Europe:

The European stock market closed the day today with positive results among its main indices. The European equity markets rose thanks to the good results of the main US indices to reach a jump in technology stocks that prompted the Nasdaq to reach record highs.

Asia:

The Asian stock market ended today's session with positive results among its main indices. This was due to overseas gains overnight and that the region's shares were driven by a rebound in the technology sector.

Table with ETFs, Curr., Close, 1D, 5D, 30 D, YTD, Exchange columns. Lists SPDR S&P 500 ETF TRUST, ISHARES MSCI EMERGING MARKET, etc.



Source: Bloomberg

Capital Market Laboratory Coordinator: Economist Bruno Bellido Anicama Support: Sebastián Butters, Kaori Olulolo, Jairo Trujillo, Mario Villar e-mail: pulsobursatil@ulima.edu.pe facebook: www.facebook.com/pulsobursatil Phone number : 4376767 Anexos: 35340 - 35310

The content of this document is just for informational purposes . The information and opinions expressed should not be considered as recommendations for future decisions .Under any circumstances, the Capital Market Laboratory of University of Lima will be responsible for the use of the statements in this document

# PULSO BURSÁTIL

## LIMA

### Stocks

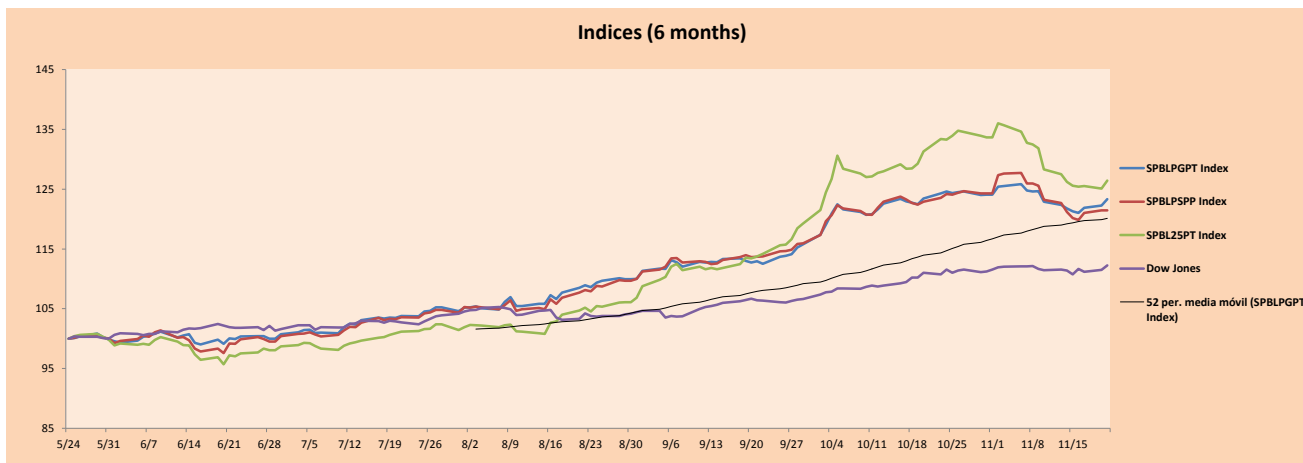
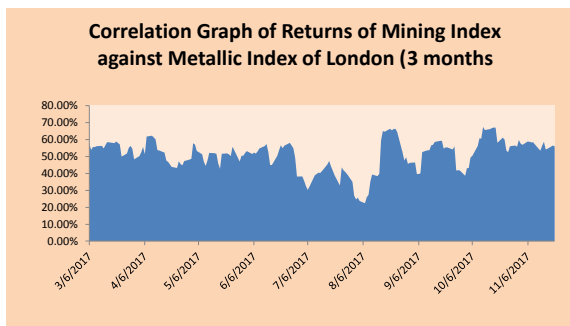
Ticker	Currency	Price	1D*	5D*	30D*	YTD*	Frequency	Volume (US\$)	Beta	Dividend Yield (%)	Price Earning	Market Cap. (M US\$)	Economic Sector*	Index Weight
▲ ALICORC1 PE**	S/.	10.27	0.59%	2.70%	3.22%	40.68%	100.00%	1,522,648	0.66	1.36	21.61	2,709.52	Industrial	3.53%
▲ ATACOCB1 PE**	S/.	0.58	7.41%	5.45%	-15.94%	45.00%	100.00%	142,956	2.01	0.00	-	199.90	Mining	1.02%
- BACKUSH1 PE**	S/.	18.50	0.00%	3.29%	8.82%	15.63%	94.74%	16,495	0.40	3.23	2.19	9,014.09	Industrial	0.82%
▲ BAP PE**	US\$	211.55	0.74%	4.11%	1.70%	33.72%	100.00%	453,669	1.06	4.05	-	16,811.20	Diverse	5.82%
▲ BVN PE**	US\$	14.32	3.24%	3.17%	0.42%	24.52%	100.00%	869,204	1.44	0.58	-	3,941.50	Mining	5.88%
▼ CASAGRC1 PE**	S/.	6.45	-0.62%	0.78%	2.38%	-5.70%	100.00%	5,392	0.53	6.26	17.23	167.87	Agricultural	1.31%
▲ CONTINC1 PE**	S/.	4.30	0.47%	-0.46%	0.94%	19.28%	100.00%	635,784	0.72	3.44	15.80	6,487.69	Finance	2.85%
▲ CORAREH1 PE**	S/.	0.77	1.32%	1.32%	11.59%	57.14%	100.00%	46,782	1.20	4.86	10.29	292.26	Industrial	1.72%
▲ CPACASC1 PE**	S/.	8.05	0.63%	1.26%	-3.82%	28.84%	100.00%	91,914	0.47	4.35	30.44	1,063.17	Industrial	2.38%
▲ CVERDEC1 PE**	US\$	28.25	0.89%	-2.59%	-4.40%	47.83%	100.00%	158,881	1.23	0.00	40.01	9,889.08	Mining	5.25%
- ENGEPEC1 PE**	S/.	2.05	0.00%	-0.49%	-10.87%	-21.15%	73.68%	10,054	0.80	0.00	19.65	1,832.51	Public Services	1.44%
- ENDISPC1**	S/.	5.90	0.00%	0.00%	3.51%	-4.22%	57.89%	174	0.89	0.00	12.74	1,164.07	Public Services	0.98%
▲ FERREYC1 PE**	S/.	2.60	1.17%	4.00%	11.59%	53.85%	100.00%	494,117	0.99	4.94	9.40	814.85	Diverse	4.90%
▲ GRAMONC1 PE**	S/.	2.05	0.99%	-10.87%	-30.51%	-56.38%	100.00%	320,523	1.92	0.00	80.28	418.08	Diverse	4.05%
- IFS PE**	US\$	38.00	0.00%	0.93%	-0.52%	18.75%	94.74%	198,612	0.51	3.42	13.50	4,298.21	Diverse	7.22%
- INRETC1 PE**	US\$	21.00	0.00%	-0.94%	8.30%	8.36%	94.74%	3,290,123	1.00	0.00	26.92	2,158.95	Diverse	5.28%
- LUSURC1 PE**	S/.	12.05	0.00%	-4.37%	0.00%	-7.94%	89.47%	15,652	0.65	5.15	14.12	1,813.00	Public Services	1.81%
- MILPOC1 PE**	S/.	4.35	0.00%	-5.43%	-6.25%	27.19%	89.47%	544,281	1.07	19.70	9.78	1,782.67	Mining	1.56%
▲ MINSURH1 PE**	S/.	1.95	2.63%	-1.02%	8.94%	34.48%	100.00%	149,908	1.52	3.53	6.77	1,737.02	Mining	3.09%
▲ PML PE**	US\$	0.30	1.69%	0.00%	-16.67%	117.39%	94.74%	1,513	1.23	0.00	-	77.44	Mining	2.12%
▲ RELAPAC1 PE**	S/.	0.31	4.81%	-1.61%	1.67%	30.90%	100.00%	61,485	1.20	0.00	4.59	333.12	Industrial	2.12%
▲ SCCO PE**	US\$	43.57	1.21%	1.56%	0.86%	34.93%	94.74%	22,221	1.66	1.35	28.29	33,680.85	Mining	2.14%
- SIDERC1 PE**	S/.	0.47	0.00%	-0.42%	-2.27%	43.64%	89.47%	46,923	1.66	0.00	4.22	179.83	Industrial	1.43%
- TV PE**	US\$	1.09	0.00%	-1.80%	-8.40%	28.24%	89.47%	38,350	1.72	0.00	-	899.11	Mining	2.93%
▲ UNACEMC1 PE**	S/.	3.00	1.69%	0.00%	1.01%	17.19%	100.00%	851,330	0.70	1.73	32.20	1,526.19	Industrial	3.00%
▲ VOLCABC1 PE**	S/.	1.32	0.76%	2.33%	-15.92%	83.33%	100.00%	1,343,660	1.88	1.96	17.01	2,863.77	Mining	5.90%

Quantity of shares: 26  
Source: Bloomberg, Economática  
\* Bloomberg Industry Classification System  
\*\* PER is used in the stock market and original currency of the instrument  
\*Legend: Variation 1D: 1 Day; 5D: 5 Days, 1M: 1 Month; YTD: Var.% 12/31/16 to date

### Sectorial Indices

	Close	1D*	5D*	30D*	YTD*	Beta
▲ Mining Index	340.47	1.54%	1.06%	-2.42%	37.09%	1.64
▲ Consumer Index	890.38	0.28%	1.60%	5.41%	30.75%	0.39
▲ Industrial Index	240.11	1.20%	0.15%	-1.07%	8.60%	0.92
▲ Banking and Financial Index	1,082.79	0.63%	3.45%	3.88%	32.67%	0.89
▲ Construction Index	269.43	1.10%	-1.75%	-6.71%	-8.89%	0.89
- Services Index	419.40	0.00%	-1.74%	-5.53%	-13.32%	0.27
▲ Juniors Index	42.32	0.95%	-1.56%	-12.24%	50.82%	1.39
- Electric Index	409.44	0.00%	-1.74%	-5.53%	-13.32%	0.27

\*Legend: Variation 1D: 1 Day; 5D: 5 Days, 1M: 1 Month; YTD: Var.% 12/31/16 to date



Source: Bloomberg

Capital Market Laboratory Coodinator: Economist Bruno Bellido Anicama  
Support: Sebastián Butters, Kaori Olulo, Jairo Trujillo, Mario Villar  
e-mail: pulsoborsatil@ulima.edu.pe  
facebook: www.facebook.com/pulsoborsatil.ul  
Phone number : 4376767 Anexes: 35340 - 35310

The content of this document is just for informational purposes . The information and opinions expressed should not be consider as recommendations for future decisions .Under any circumstances, the Capital Market Laboratory of University of Lima will be responsible for the use of the statements in this document.

# PULSO BURSÁTIL

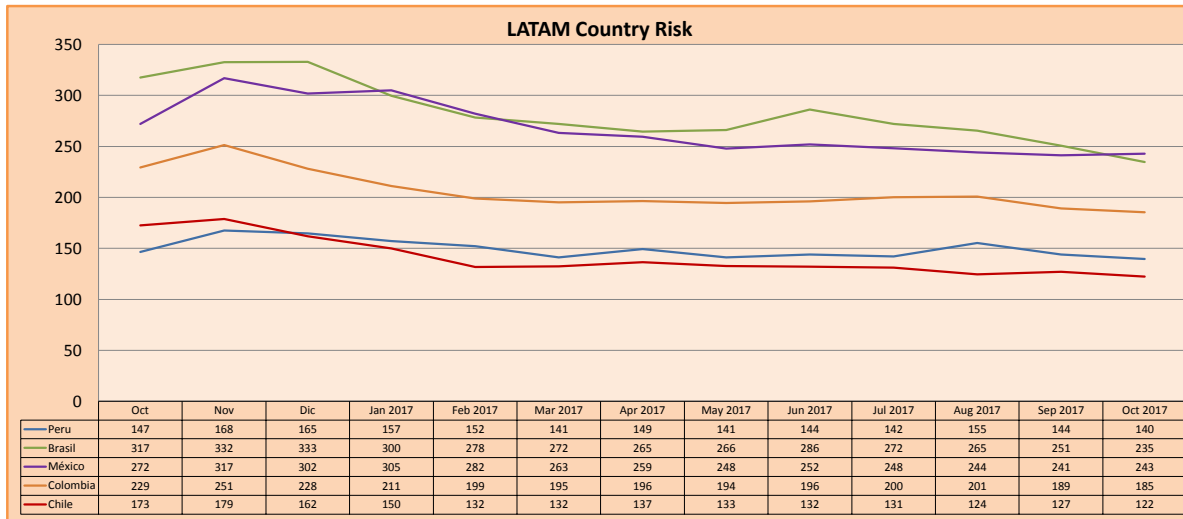
## SOVEREIGN RATING

RISK RATINGS			
Moody's	S&P	Fitch	
Aaa	AAA	AAA	Prime
Aa1	AA+	AA+	High credit quality
Aa2	AA	AA	
Aa3	AA-	AA-	
A1	A+	A+	Medium-high grade, with low credit risk
A2	A	A	
A3	A-	A-	
Baa1	BBB+	BBB+	Moderate Credit Risk
Baa2	BBB	BBB	
Baa3	BBB-	BBB-	
Ba1	BB+	BB+	It has speculative elements and it is subject to substantial credit risk
Ba2	BB	BB	
Ba3	BB-	BB-	
B1	B+	B+	It is considered speculative and it has high credit risk
B2	B	B	
B3	B-	B-	
Caa1	CCC+		Bad credit conditions and it is subject to high credit risk
Caa2	CCC		
Caa3	CCC-	CCC	
Ca	CC		Very close to default or in default
	C		
C	D	DDD DD D	

Source: Bloomberg

Latin America Credit Rating			
Clasificadora de riesgo			
Country	Moody's	Fitch	S&P
Peru	A3	BBB+	BBB+
Mexico	A3	BBB+	BBB+
Venezuela	Caa3	RD	SD
Brazil	Ba2	BB	BB
Colombia	Baa2	BBB	BBB
Chile	Aa3	A	A+
Argentina	B3	B	B+
Panama	Baa2	BBB	BBB

Source: Bloomberg



Source: Bloomberg

Capital Market Laboratory Coordinator: Economist Bruno Bellido Anicama  
Support: Sebastián Butters, Kaori Olulo, Jairo Trujillo, Mario Villar  
e-mail: pulsobursatil@ulima.edu.pe  
facebook: www.facebook.com/pulsobursatil.ul  
Phone number : 4376767 Anexes: 35340 - 35310

The content of this document is just for informational purposes. The information and opinions expressed should not be considered as recommendations for future decisions. Under any circumstances, the Capital Market Laboratory of University of Lima will be responsible for the use of the statements in this document.