



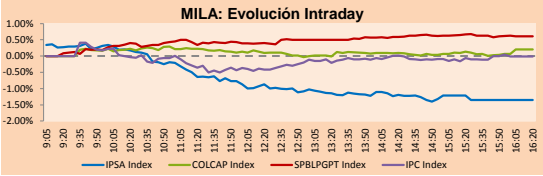
PULSO BURSÁTIL

Lima, november 22, 2017

MILA

Main Indices	Close	1 D	5 D	1 M	YTD	Market Cap. (US\$ bill)
▼ IPSA (Chile)	5,128.87	-1.35%	-2.75%	-7.15%	23.55%	197.87
▼ IGPA (Chile)	25,811.69	-1.30%	-2.92%	-6.72%	24.49%	228.31
▲ IGBC (Colombia)	10,878.06	0.35%	1.72%	-0.24%	7.64%	96.23
▲ COLCAP (Colombia)	1,451.49	0.21%	1.46%	-0.92%	7.38%	98.18
▲ S&P/BVL (Perú)*	19,886.00	0.60%	2.37%	0.59%	27.74%	102.48
▲ S&P/BVL SEL (Perú)	364.01	1.20%	2.29%	0.00%	22.16%	81.09
▲ S&P/BVL LIMA 25	31,123.95	1.11%	2.08%	-2.39%	32.00%	94.79
▲ IPC (México)	48,196.89	0.02%	0.68%	-3.58%	5.60%	310.75
▼ S&P MILA 40	682.51	-0.02%	0.70%	-4.47%	22.82%	283.24

* Market Cap. Of the last price Legend: Variation 1D: 1 day; 5D: 5 days; 1M: 1 Month; YTD: Var%12/31/16 to date



Source: Bloomberg

Currency	Price	1D*	5D*	30 D*	YTD*
- New Sol (PEN)	3,2365	0.00%	-0.63%	-0.11%	-3.56%
▼ Chilean Peso (CLP)	633.68	-0.25%	0.05%	0.27%	-5.48%
▼ Colombian Peso (COP)	2,976.90	-0.64%	-1.71%	0.85%	-0.84%
▼ Mexican Peso (MXN)	18.64	-0.72%	-3.18%	-2.32%	-10.08%

*Legend: Variation 1D: 1 day; 5D: 5 days; 1M: 1 Month; YTD: Var%12/31/16 to date

Equity	Exchange	Amt.	Price	▲%
Largest gains				
ALT	Lima	USD	0.03	32.00
CAUCHOI1	Lima	PEN	1.45	11.54
INVERCAP	Santia.	CLP	2125.00	8.97
ATACOBC1	Lima	PEN	0.64	6.67

Largest losses	Exchange	Amt.	Price	▼%
HIDRAZC1	Lima	PEN	1.12	-6.67
BANVIDA	Santia.	CLP	476.98	-6.47
SALFACORP	Santia.	CLP	873.93	-3.97
IANSA	Santia.	CLP	18.30	-3.63

Per Turnover	Exchange	Amount (US\$)
NEGOCIC1	Lima	82,871,034
SQM-B	Santia.	19,000,079
CENCOSUD	Santia.	11,212,614
PARAUACO	Santia.	9,311,301
BSANTANDER	Santia.	8,601,908

Per Volume	Exchange	Volume
NEGOCIC1	Lima	123,600,070
BSANTANDER	Santia.	118,979,970
VAPORES	Santia.	54,106,150
ORO BLANCO	Santia.	50,465,728
CHILE	Santia.	37,079,937

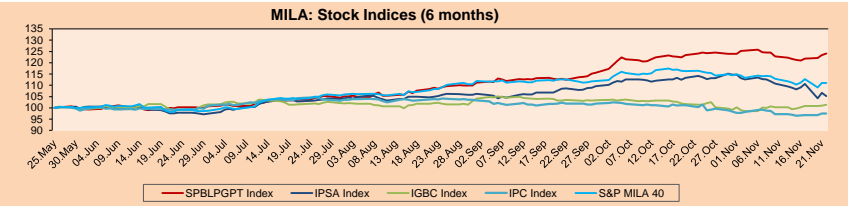
MILA

Peru: The General Index of the BVL of Peru ended today's session with a positive return of +0.60%. The index maintains a cumulative positive annual trend of +27.74% in local currency, while the adjusted return to foreign currency is +32.46%. Then, the S&P/BVL Peru SEL obtained a positive result of +0.42%, while the S&P/BVL LIMA 25 grew +1.11%. The spot PEN reached S/3,2365.

Chile: The IPSA index ended the day with a negative result of -1.35%. The sectors of the index with the most negative results were Telecommunications Services (-2.92%) and Materials (-1.94%). On the other hand, the values with the most bearish results were Salfacorp SA (-3.97%) and Empresas CMPC SA (-3.42%).

Colombia: The COLCAP index closed the session with positive results of +0.22%. The sectors with higher yields were Energy (+1.94%) and Products of first necessity (+0.37%). In addition, the stocks with the highest yields were Ecopetrol SA (+2.01%) and Corporación Financiera Colombiana (+1.26%).

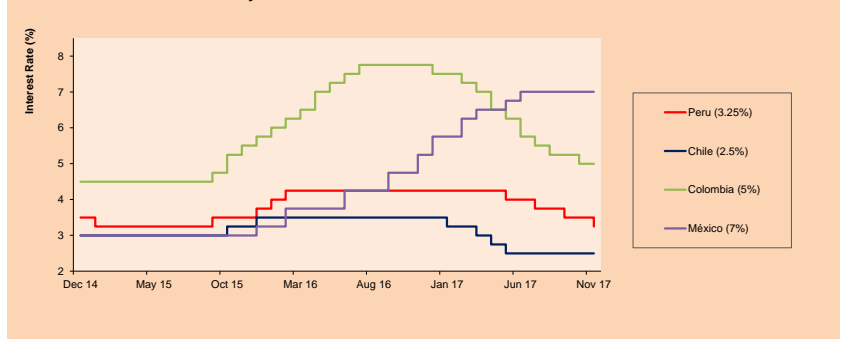
Mexico: Mexico's IPC index closed today's session with a positive return of +0.02%. The sectors of the index that generated the most positive returns were Industrial (+0.87%) and Materials (+0.75%). Finally, the stocks with the highest yields were Alfa SAB de CV (+3.35%) and Grupo México SAB de CV (+2.79%).



Base: 23/08/17=100 Source: Bloomberg

ETFs	Curr.	Close	1D	5D	30 D	YTD	Exchange
▲ iShares MSCI All Peru Caped Index Fund	USD	41.49	0.61%	2.88%	-0.91%	26.49%	NYSE Arca
▼ iShares MSCI Chile Capped	USD	47.08	-1.13%	-2.20%	-7.72%	25.82%	BATS
▲ Global X MSCI Colombia	USD	14.12	0.71%	2.99%	-1.81%	9.12%	NYSE Arca
▲ iShares MSCI Mexico Capped	USD	51.43	0.78%	4.62%	0.16%	16.97%	NYSE Arca
▲ iShares MSCI Emerging Markets	USD	47.81	0.25%	4.75%	4.18%	36.56%	NYSE Arca
▲ Vanguard FTSE Emerging Markets	USD	45.77	0.33%	4.40%	3.06%	27.92%	NYSE Arca
▲ iShares Core MSCI Emerging Markets	USD	57.63	0.24%	4.42%	4.19%	35.76%	NYSE Arca
▲ iShares JP Morgan Emerging Markets Bonds	USD	60.47	0.07%	2.68%	2.54%	23.64%	BATS
▲ Morgan Stanley Emerging Markets Domestic	USD	7.72	0.13%	1.98%	-3.50%	7.67%	New York

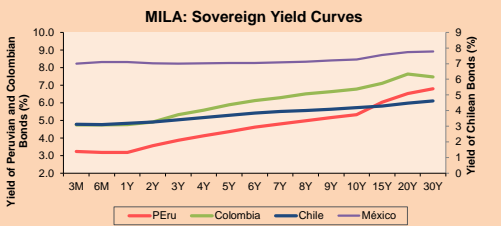
MILA: Policy Rate



Source: Bloomberg

Base: 23/08/17=100 Source: Bloomberg

Fixed Income	Currency	Price	Bid Yield (%)	Ask Yield (%)	Duration
PERU 4.125 08/25/2027	USD	110.11	2.95	2.90	8.08
PERU 7.125 03/30/19	USD	107.518	1.58	1.31	1.29
PERU 7.35 07/21/25	USD	130.945	2.85	2.80	6.06
PERU 8.75 11/21/33	USD	158.145	3.87	3.82	10.22
PERU 6.55 03/14/37	USD	136.188	3.89	3.85	11.79
PERU 5.625 11/19/2050	USD	128.622	4.06	4.03	17.12
CHILE 2.25 10/30/22	USD	98.923	2.53	2.44	4.65
CHILE 3.875 08/05/20	USD	104.74	2.11	2.00	2.54
CHILE 3.625 10/30/2042	USD	99.798	3.65	3.62	16.48
COLOM 11.75 02/25/20	USD	120.923	2.20	2.10	2.00
COLOM 11.85 03/09/28	USD	170.286	3.64	3.58	6.99
COLOM 10.375 01/28/33	USD	158	5.01	4.81	9.05
COLOM 7.375 09/18/37	USD	133.408	4.77	4.73	11.59
COLOM 6.125 01/18/41	USD	119.302	4.76	4.72	13.08
MEX 4 10/02/23	USD	105.152	3.06	3.00	5.21
MEX5.55 01/45	USD	114.488	4.623	4.595	14.68



Source: Bloomberg

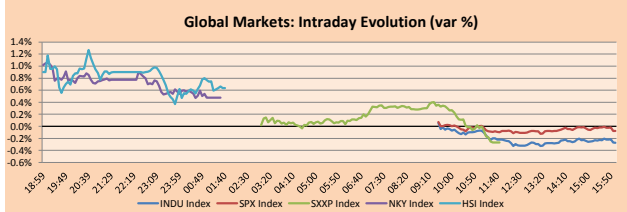
Capital Market Laboratory Coordinator: Economist Bruno Bellido Anicam
Support: Sebastián Butters, Kaori Olulú, Jairo Trujillo, Mario Villar
e-mail: pulsobursatil@ulima.edu.pe
facebook: www.facebook.com/pulsobursatil.ul
Phone number : 4376767 Anexx: 35340 - 35310

PULSO BURSÁTIL

WORLD

Main Indices	Close	1 D*	5 D*	1 M*	YTD*	Market Cap. (US\$ Mill.)
▼ Dow Jones (USA)	23,526.18	-0.27%	-1.10%	0.85%	19.04%	6,583,257
▼ Standard & Poor's 500 (USA)	2,597.08	-0.08%	1.27%	0.85%	16.00%	23,067,332
▲ NASDAQ Composite (USA)	6,867.36	0.07%	2.40%	3.59%	27.57%	10,632,169
▼ Stoxx EUROPE 600 (Europe)	387.06	-0.27%	1.34%	-0.79%	7.09%	8,685,212
▼ DAX (Germany)	13,015.04	-1.16%	0.30%	0.18%	13.36%	1,021,749
▲ FTSE 100 (United Kingdom)	7,419.02	0.10%	0.63%	-1.39%	3.87%	1,532,112
▲ CAC 40 (France)	5,352.76	-0.25%	0.97%	-0.37%	10.09%	1,273,914
▲ IBEX 35 (Spain)	10,013.90	0.21%	0.00%	-2.04%	7.08%	534,100
▲ MSCI AC Asia Pacific Index	172.87	0.75%	2.04%	3.61%	28.01%	14,516,668
▲ HANG SENG (Hong Kong)	30,003.49	0.62%	3.99%	6.00%	36.38%	2,988,269
▲ SHANGHAI SEC Comp. (China)	3,430.46	0.59%	0.82%	1.47%	10.53%	5,149,499
▲ NIKKEI 225 (Japan)	22,523.15	0.48%	2.25%	3.81%	17.83%	3,576,642
▲ BOVESPA (Brazil)	74,518.79	-0.10%	2.82%	-2.45%	23.73%	708,539
▲ MERVAL (Argentina)	27,327.97	0.23%	6.70%	1.29%	61.53%	108,583

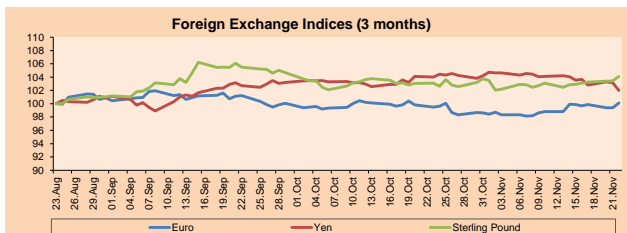
*Legend: Variation 1D: 1 Day; 5D: 5 Days; 1M: 1 Month; YTD: Var. % 12/31/16 to date



Source: Bloomberg

Currency	Price	1 D*	5 D*	1 M*	YTD*
▲ Euro	1.1822	0.72%	0.26%	0.62%	12.41%
▼ Yen	111.2200	-1.09%	-1.47%	-1.95%	-4.91%
▲ Sterling Pound	1.3325	0.65%	1.17%	0.96%	7.98%
▲ Yuan	6.6103	-0.28%	-0.21%	-0.45%	-4.82%
▲ Hong Kong Dollar	7.8107	-0.01%	0.06%	0.13%	0.71%
▲ Brazilian Real	3.2248	-0.90%	-2.73%	-0.33%	-0.93%
▲ Argentine Peso	117.4298	-0.33%	-0.48%	0.11%	9.76%

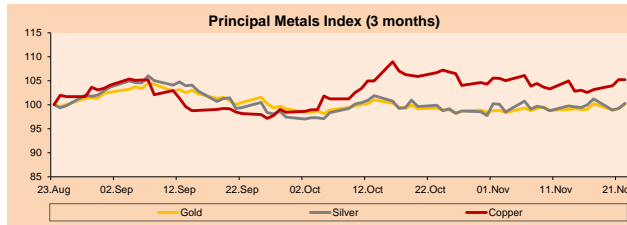
*Legend: Variation 1D: 1 Day; 5D: 5 Days; 1M: 1 Month; YTD: Var. % 12/31/16 to date



Base: 23/08/17=100
Source: Bloomberg

Commodities	Close	1 D*	5 D*	1 M*	YTD*
▲ Oro (US\$ Oz. T) (LME)	1,292.00	0.90%	1.69%	0.76%	12.13%
▲ Plata (US\$ Oz. T) (LME)	17.15	1.09%	0.90%	0.40%	7.75%
▲ Cobalt (US\$ TM) (LME)	6,877.50	0.00%	2.10%	-1.40%	24.52%
▲ Zinc (US\$ TM) (LME)	3,221.00	0.00%	0.88%	1.10%	25.93%
▲ Petróleo WTI (US\$ Barril) (NYM)	58.02	2.09%	4.50%	11.41%	1.81%
▲ Estano (US\$ TM) (LME)	19,350.00	0.00%	-0.35%	-1.65%	-8.75%
▲ Plomo (US\$ TM) (LME)	2,467.75	0.00%	1.89%	-0.92%	23.42%
▲ Molibdeno (US\$ TM) (LME)	15,640.00	0.00%	0.03%	0.04%	5.04%
▲ Azúcar #11 (US\$ Libra) (NYB-ICE)	15.28	2.69%	1.26%	10.09%	-17.76%
▲ Cacao (US\$ TM) (NYB-ICE)	2,124.00	0.66%	-0.23%	0.19%	-2.70%
▲ Café Arábica (US\$ TM) (NYB-ICE)	127.00	0.28%	-2.38%	-0.86%	-15.11%

*Lenda: Variación 1D: 1 Día; 5D: 5 Días; 1M: 1 Mes; YTD: Var. % 31/12/15 a la fecha



Base: 23/08/17=100
Source: Bloomberg

Equity

Wall Street (Stocks from S&P 500)

Largest gains	Curr.	Price	▲ %	Exchange	Largest losses	Curr.	Price	▼ %	Exchange
DE UN	USD	145.25	4.32	New York	HPQ UN	USD	21.34	-4.99	New York
TRIP UW	USD	34.19	4.21	NASDAQ GS	VIAB UN	USD	26.68	-2.13	NASDAQ GS
CHK UN	USD	3.97	4.20	New York	AMAT UN	USD	57.68	-1.90	NASDAQ GS
BBBY UW	USD	21.06	3.90	NASDAQ GS	GPS UN	USD	29.17	-1.82	New York

Europe (Stocks from STOXX EUROPE 600)

Largest gains	Curr.	Price	▲ %	Exchange	Largest losses	Curr.	Price	▼ %	Exchange
QQ LN	GBP	218	8.19	Londres	SCHA NO	NOK	229.9	-6.73	Oslo
TLW LN	GBP	173.4	4.58	Londres	BTG LN	GBP	732	-5.06	Londres
KGF LN	GBP	322.6	4.57	Londres	BDEV LN	GBP	610	-3.71	Londres
FRES LN	GBP	1349	4.33	Londres	LUPE SS	SEK	208.2	-3.34	Stockholm

Global Overview

United States:

The US stock market ended the session with mixed results, emphasizing the fact that the main indices established historical highs shortly after today's opening, but then ended in negative territory. In business news, the price of shares in Hewlett Packard Enterprise Co. fell -6.73% registering the biggest fall of the S & P 500. The corporate technology giant said on Tuesday night that CEO, Meg Whitman, is leaving and gave a disappointing first quarter perspective. In more detail, Meg Whitman took over one of the companies promising a change within the next five years, however, it will go a little over six years later, having broken the Hewlett-Packard puzzle into several pieces, so only achieving little more than paying investors and firing employees. In macroeconomic data, initial jobless claims, a tool to measure layoffs from USA, decreased by 13,000 to 239,000 in the week ended on November 18. Finally, the price of oil rose around +1.20%, staying close to a maximum of two years due to a drop in the US crude reserves caused optimism to a rebound for the hopes of an extension of OPEC cut.

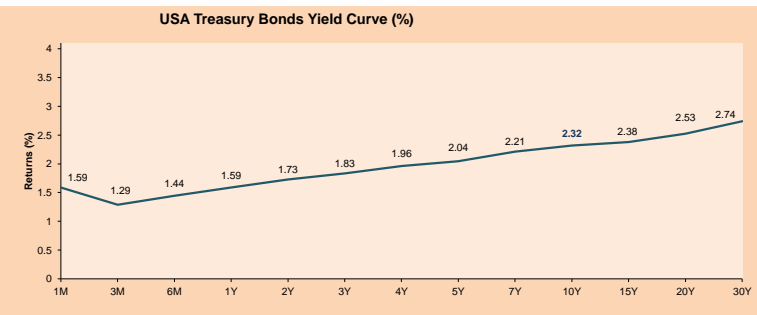
Europe:

The European stock market closed with mixed results among its main indices. Today, the "Stoxx Europe 600 Travel & Leisure" index fell -0.8%, after the announcement of the company "Thomas Cook", on its 2017 annual earnings report; showed that its gross margin was reduced in part due to the competitive market in Spain. Tax profits before taxes increased to 46 million pounds. On the other hand, the index "Stoxx Europe 600 Oil & Gas" gained +0.4%, thanks to the company "Repsol SA" (REP), since a consortium led by this company plans to invest \$ 900 million for exploration and production in the south of Bolivia. In the United Kingdom, construction actions such as Barratt were affected by the announcement of the government's autumn Budget, presented by the Finance Minister, in which he announced that an urgent review of the so-called "land bank" will be launched, which could result in land claimed by the government if development continues slow. The real estate company "Barratt" (BDEV) closed with a fall of 3.7%, being one of the biggest losses of the European index "Stoxx 600". Despite this, the English benchmark index "FTSE 100" closed with gains helped in part by commodity shares. In addition, the pound fell as Finance Minister Philip Hammond said the Budget Accountability Office cut growth forecasts for the economy. It is expected that the GDP for this year will expand by 1.5%, below a previous forecast of 2%.

Asia:

The Asian stock market ended today's session with positive results among its main indices. This was due to the following of the Wall Street trend, where there were new highs in the indexes and stocks related to the technology sector. Among the news that stood out most, in Hong Kong, the Hang Seng stock index rose by 0.6%. This not only marked his fourth consecutive day of earnings, but allowed him to reach his 30,000 level for the first time in a decade. The explanation, according to some strategists, is that a lot of foreign capital is betting that the Hong Kong market will grow. Another factor that drove this increase was financials, including ICBC and HSBC PLC (+1.6% and +1.8%, respectively). Regarding Australia, the S&P/ASX 200 benchmark index rose 0.4%. The fact was caused by the release of bullish data from the US oil inventory, which caused the price of oil to increase. On the other hand, in Japan, the Nikkei 225 index grew by 0.48%, even when the US dollar depreciated after Federal Reserve Chair Janet Yellen said she is not sure that weak inflation is transitory.

ETFs	Curr.	Close	1D	5D	30 D	YTD	Exchange
SPDR S&P 500 ETF TRUST	USD	259.76	-0.09%	1.29%	1.43%	16.21%	NYSE Arca
ISHARES MSCI EMERGING MARKET	USD	47.81	0.25%	4.75%	4.18%	36.56%	NYSE Arca
ISHARES IBOXX USD HIGH YIELD	USD	87.81	0.16%	1.30%	-0.88%	1.46%	NYSE Arca
FINANCIAL SELECT SECTOR SPDR	USD	26.23	-0.49%	0.19%	-1.47%	12.82%	NYSE Arca
VANECK VECTORS GOLD MINERS E	USD	22.92	0.88%	1.19%	-0.95%	9.50%	NYSE Arca
ISHARES RUSSELL 2000 ETF	USD	150.89	-0.13%	3.61%	1.39%	11.89%	NYSE Arca
SPDR GOLD SHARES	USD	122.63	0.92%	1.00%	0.68%	11.83%	NYSE Arca
ISHARES 20+ YEAR TREASURY BO	USD	127.15	0.32%	2.03%	2.38%	6.73%	NASDAQ GM
POWERSHARES QQQ TRUST SERIES	USD	155.69	0.12%	2.03%	5.38%	31.41%	NASDAQ GM
ISHARES NASDAQ BIOTECHNOLOGY	USD	312.52	0.58%	2.05%	-4.64%	17.76%	NASDAQ GM
ENERGY SELECT SECTOR SPDR	USD	67.69	0.40%	0.47%	0.40%	-10.13%	NYSE Arca
PROSHARES ULTRA VIX ST FLUTUR	USD	13.31	-2.06%	-24.63%	-18.04%	-92.39%	NYSE Arca
UNITED STATES OIL FUND LP	USD	11.60	1.75%	4.60%	11.32%	-1.02%	NYSE Arca
ISHARES MSCI BRAZIL CAPPED E	USD	40.86	1.06%	7.47%	-0.90%	22.56%	NYSE Arca
SPDR S&P OIL & GAS EXP & PR	USD	36.29	1.70%	3.25%	8.55%	-14.80%	NYSE Arca
UTILITIES SELECT SECTOR SPDR	USD	55.79	0.00%	-1.05%	1.64%	14.87%	NYSE Arca
ISHARES US REAL ESTATE ETF	USD	82.33	-0.28%	0.44%	3.25%	7.01%	NYSE Arca
SPDR S&P BIOTECH ETF	USD	81.71	0.53%	2.07%	-3.26%	35.05%	NYSE Arca
ISHARES IBOXX INVESTMENT GRA	USD	121.33	0.39%	0.73%	0.12%	3.54%	NYSE Arca
ISHARES JPM MORGAN USD EMERGI	USD	115.86	0.42%	1.13%	-0.07%	5.12%	NASDAQ GM
REAL ESTATE SELECT SECT SPDR	USD	33.55	-0.33%	-0.24%	2.89%	9.11%	NYSE Arca
ISHARES CHINA LARGE-CAP ETF	USD	48.32	0.19%	5.39%	5.94%	39.21%	NYSE Arca
CONSUMER STAPLES SPDR	USD	54.81	-0.13%	1.13%	1.76%	5.99%	NYSE Arca
VANECK VECTORS JUNIOR GOLD M	USD	32.47	1.56%	1.85%	-1.78%	2.92%	NYSE Arca
SPDR BBG BARC HIGH YIELD BND	USD	36.96	0.22%	1.34%	-0.86%	1.40%	NYSE Arca
VANGUARD REIT ETF	USD	84.84	-0.22%	0.62%	1.81%	2.80%	NYSE Arca



Source: Bloomberg

Capital Market Laboratory Coordinator: Economist Bruno Bellido Anicama
Support: Sebastián Butters, Kaori Olulio, Jairo Trujillo, Mario Villar
e-mail: pulsobursatil@ulima.edu.pe
facebook: www.facebook.com/pulsobursatil
Phone number : 4376767 Anexos: 35340 - 35310

PULSO BURSÁTIL

LIMA

Stocks

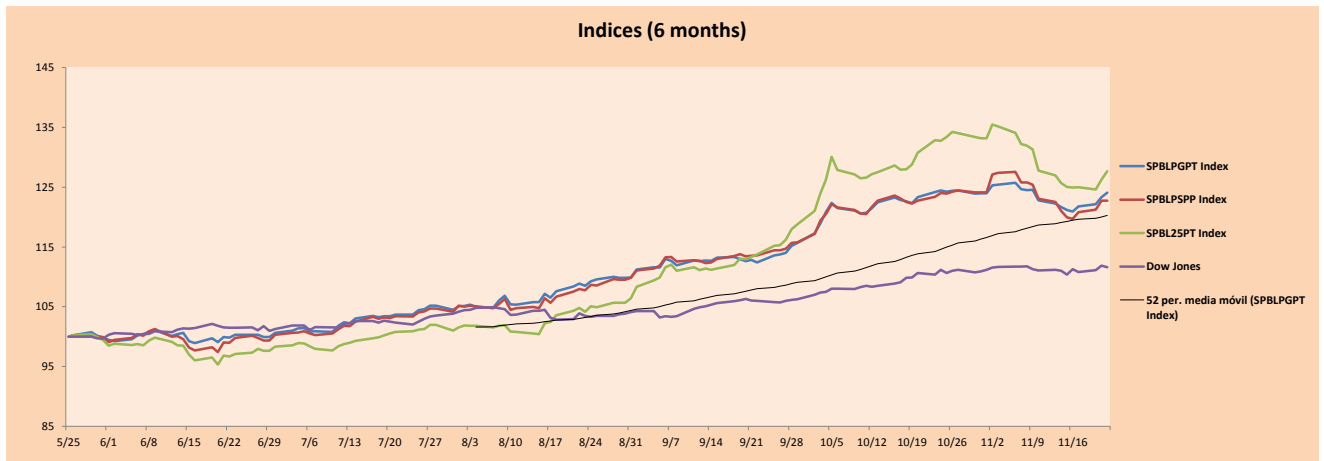
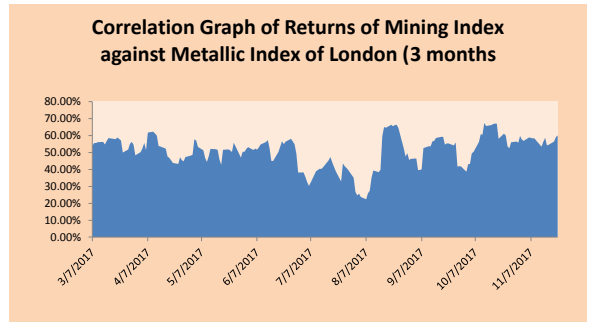
Ticker	Currency	Price	1D*	5D*	30D*	YTD*	Frequency	Volume (US\$)	Beta	Dividend Yield (%)	Price Earning	Market Cap. (M US\$)	Economic Sector*	Index Weight
▲ ALICORC1 PE**	S/.	10.30	0.29%	4.57%	3.21%	41.10%	100.00%	138,013	0.66	1.36	21.61	2,717.38	Industrial	3.53%
▲ ATACOCB1 PE**	S/.	0.64	6.67%	12.28%	-11.11%	60.00%	100.00%	188,851	2.13	0.00	-	209.36	Mining	1.02%
- BACKUSH1 PE**	S/.	18.50	0.00%	0.00%	8.82%	15.63%	94.74%	64,591	0.40	3.23	2.60	9,014.09	Industrial	0.82%
▲ BAP PE**	US\$	212.02	0.22%	4.53%	4.49%	37.23%	100.00%	1,985,382	1.06	4.04	-	16,848.55	Diverse	5.82%
▼ BVN PE**	US\$	14.30	-0.14%	4.76%	0.49%	24.35%	100.00%	847,917	1.46	0.58	-	3,936.00	Mining	5.88%
- CASAGRC1 PE**	S/.	6.45	0.00%	-0.62%	0.78%	-5.70%	100.00%	3,986	0.52	6.26	17.23	167.87	Agricultural	1.31%
▲ CONTINC1 PE**	S/.	4.30	1.18%	0.47%	0.94%	19.28%	100.00%	241,818	0.71	3.44	15.80	6,487.69	Finance	2.85%
▲ CORAREH1 PE**	S/.	0.79	2.60%	3.95%	8.22%	61.22%	100.00%	32,131	1.20	4.73	10.55	302.23	Industrial	1.72%
▲ CPACASC1 PE**	S/.	8.15	1.24%	3.16%	-2.98%	30.44%	100.00%	241,269	0.47	4.29	30.81	1,076.27	Industrial	2.38%
▲ CVERDEC1 PE**	US\$	28.50	0.88%	0.00%	-6.25%	49.14%	100.00%	187,585	1.22	0.00	40.36	9,976.60	Mining	5.25%
- ENDEPEC1 PE**	S/.	2.05	0.00%	-4.65%	-12.02%	-21.15%	73.68%	4,161	0.80	3.11	19.65	1,832.51	Public Services	1.44%
▲ ENDISPC1**	S/.	6.00	1.69%	1.69%	4.17%	-2.60%	57.89%	30,390	0.89	3.17	12.96	1,183.80	Public Services	0.98%
▲ FERREYC1 PE**	S/.	2.66	2.31%	9.47%	10.83%	57.40%	100.00%	1,604,717	0.99	4.83	9.62	833.65	Diverse	4.90%
▼ GRAMONC1 PE**	S/.	2.04	-1.92%	-7.27%	-27.14%	-56.60%	100.00%	159,665	1.92	0.00	79.89	416.04	Diverse	4.05%
▲ IFS PE**	US\$	38.21	0.55%	1.49%	0.03%	19.41%	94.74%	899,230	0.51	3.40	13.57	4,321.97	Diverse	7.22%
▼ INRETC1 PE**	US\$	20.85	-1.65%	-1.65%	7.47%	7.59%	100.00%	275,812	1.00	0.93	25.28	2,143.53	Diverse	5.28%
▲ LUSURC1 PE**	S/.	12.20	1.24%	-0.81%	1.16%	-6.80%	89.47%	10,233	0.64	5.08	14.29	1,835.57	Public Services	1.81%
▲ MILPOC1 PE**	S/.	4.53	4.14%	0.89%	-4.03%	32.46%	89.47%	9,119	1.07	18.92	10.18	1,855.52	Mining	1.56%
- MINSURH1 PE**	S/.	1.95	0.00%	-1.02%	4.28%	34.48%	100.00%	291,243	1.52	3.53	6.77	1,737.02	Mining	3.09%
▼ PML PE**	US\$	0.30	-1.33%	-4.52%	-20.00%	114.49%	94.74%	68,377	1.23	0.00	-	76.41	Mining	2.12%
▲ RELAPAC1 PE**	S/.	0.31	2.62%	0.97%	0.97%	34.33%	100.00%	36,503	1.24	0.00	4.79	341.86	Industrial	2.12%
▲ SCCO PE**	US\$	43.80	0.53%	3.55%	0.85%	35.65%	94.74%	102,000	1.35	28.44	28.44	33,858.65	Mining	2.14%
▲ SIDERC1 PE**	S/.	0.48	1.48%	1.26%	-3.41%	45.76%	89.47%	100,619	1.66	0.00	4.29	182.49	Industrial	1.43%
▲ TV PE**	US\$	1.14	4.59%	3.64%	-4.20%	34.12%	89.47%	43,442	1.72	0.00	-	940.36	Mining	2.93%
- UNACEMC1 PE**	S/.	3.00	0.00%	0.33%	0.00%	17.19%	100.00%	397,537	0.72	1.73	32.20	1,526.19	Industrial	3.00%
▲ VOLCABC1 PE**	S/.	1.36	2.26%	4.62%	-18.07%	88.89%	100.00%	1,121,365	1.87	1.91	17.52	2,893.97	Mining	5.90%

Quantity of shares: 26
Source: Bloomberg, Economática
* Bloomberg Industry Classification System
** PER is used in the stock market and original currency of the instrument
*Legend: Variation 1D: 1 Day; 5D: 5 Days, 1M: 1 Month; YTD: Var.% 12/31/16 to date

Sectorial Indices

	Close	1D*	5D*	30D*	YTD*	Beta
▲ Mining Index	343.73	0.87%	2.81%	-2.66%	38.40%	1.65
▼ Consumer Index	889.95	-0.30%	1.72%	5.04%	30.68%	0.37
▲ Industrial Index	243.21	1.10%	3.40%	-0.40%	10.00%	0.95
▲ Banking and Financial Index	1,084.85	0.23%	3.43%	4.16%	32.92%	0.88
▲ Construction Index	271.32	0.40%	0.47%	-5.54%	-8.25%	0.90
▲ Services Index	421.77	0.57%	-1.88%	-5.54%	-12.83%	0.25
▲ Juniors Index	43.17	2.01%	-1.89%	-13.87%	53.85%	1.37
▲ Electric Index	411.75	0.56%	-1.88%	-5.54%	-12.83%	0.25

*Legend: Variation 1D: 1 Day; 5D: 5 Days, 1M: 1 Month; YTD: Var.% 12/31/16 to date



Source: Bloomberg

Capital Market Laboratory Coodinator: Economist Bruno Bellido Anicama
Support: Sebastián Butters, Kaori Olulo, Jairo Trujillo, Mario Villar
e-mail: pulsoborsatil@ulima.edu.pe
facebook: www.facebook.com/pulsoborsatil.ul
Phone number : 4376767 Anexes: 35340 - 35310

The content of this document is just for informational purposes . The information and opinions expressed should not be consider as recommendations for future decisions .Under any circumstances, the Capital Market Laboratory of University of Lima will be responsible for the use of the statements in this document.

PULSO BURSÁTIL

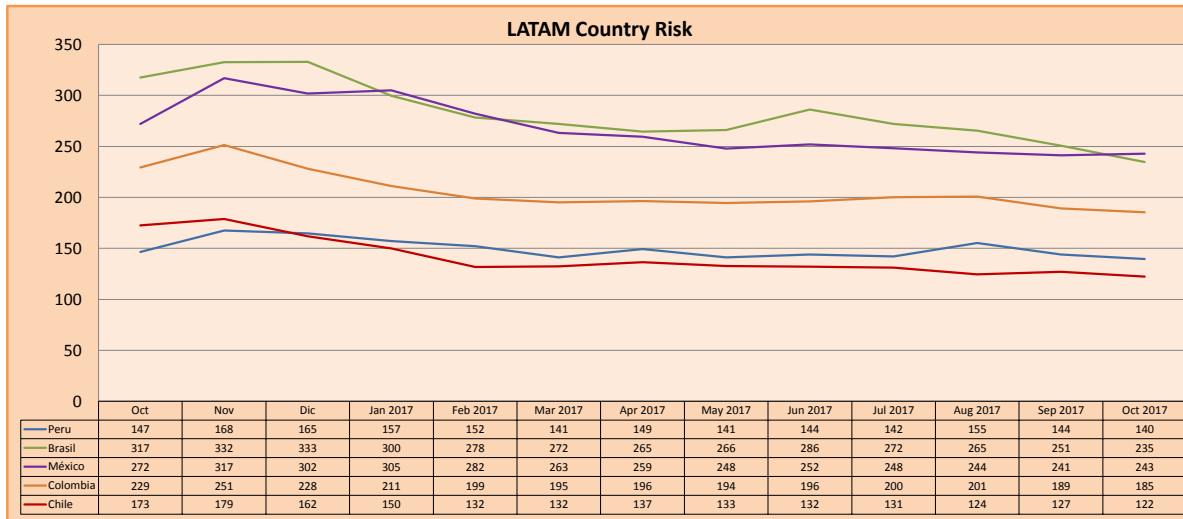
SOVEREIGN RATING

RISK RATINGS			
Moody's	S&P	Fitch	
Aaa	AAA	AAA	Prime
Aa1	AA+	AA+	High credit quality
Aa2	AA	AA	
Aa3	AA-	AA-	
A1	A+	A+	Medium-high grade, with low credit risk
A2	A	A	
A3	A-	A-	
Baa1	BBB+	BBB+	Moderate Credit Risk
Baa2	BBB	BBB	
Baa3	BBB-	BBB-	
Ba1	BB+	BB+	It has speculative elements and it is subject to substantial credit risk
Ba2	BB	BB	
Ba3	BB-	BB-	
B1	B+	B+	It is considered speculative and it has high credit risk
B2	B	B	
B3	B-	B-	
Caa1	CCC+	CCC	Bad credit conditions and it is subject to high credit risk
Caa2	CCC		
Caa3	CCC-		
Ca	CC	DDD	Very close to default or in default
	C		
C	D		

Source: Bloomberg

Latin America Credit Rating			
Clasificadora de riesgo			
Country	Moody's	Fitch	S&P
Peru	A3	BBB+	BBB+
Mexico	A3	BBB+	BBB+
Venezuela	Caa3	RD	SD
Brazil	Ba2	BB	BB
Colombia	Baa2	BBB	BBB
Chile	Aa3	A	A+
Argentine	B3	B	B+
Panama	Baa2	BBB	BBB

Source: Bloomberg



Source: Bloomberg

Capital Market Laboratory Coordinator: Economist Bruno Bellido Anicama
Support: Sebastián Butters, Kaori Olulo, Jairo Trujillo, Mario Villar
e-mail: pulsobursatil@ulima.edu.pe
facebook: www.facebook.com/pulsobursatil.ul
Phone number : 4376767 Anexes: 35340 - 35310

The content of this document is just for informational purposes. The information and opinions expressed should not be considered as recommendations for future decisions. Under any circumstances, the Capital Market Laboratory of University of Lima will be responsible for the use of the statements in this document.