



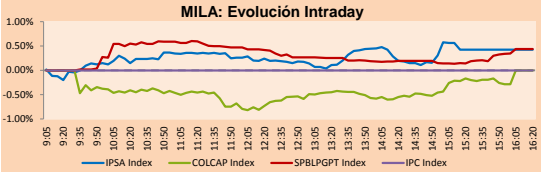
# PULSO BURSÁTIL

Lima, december 12, 2017

## MILA

Main Indices	Close	1 D	5 D	1 M	YTD	Market Cap. (US\$ bill)
▲ IPSA (Chile)	5,039.90	0.42%	0.51%	-6.58%	21.40%	185.73
▲ IGPA (Chile)	25,334.27	0.49%	0.40%	-6.77%	22.19%	213.63
▲ IGBC (Colombia)	11,072.73	0.04%	2.44%	2.89%	9.56%	96.88
▼ COLCAP (Colombia)	1,470.10	0.00%	1.66%	2.49%	8.76%	98.64
▲ S&P/BVL (Perú)*	19,292.26	0.45%	-0.71%	-1.97%	23.93%	99.85
▲ S&P/BVL SEL (Perú)	353.84	0.22%	-0.79%	-3.06%	18.75%	79.04
▼ S&P/BVL LIMA 25	29,950.38	-0.03%	-1.65%	-3.86%	27.02%	92.12
▲ IPC (México)	47,699.04	0.27%	1.14%	-0.69%	4.50%	296.39
▲ S&P MILA 40	660.34	0.33%	1.29%	-4.74%	18.83%	273.58

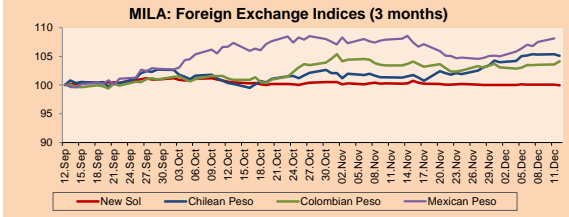
\* Market Cap. Of the last price \*Legend: Variation 1D: 1 day; 5D: 5 days; 1M: 1 Month; YTD: Var%12/31/16 to date



Source: Bloomberg

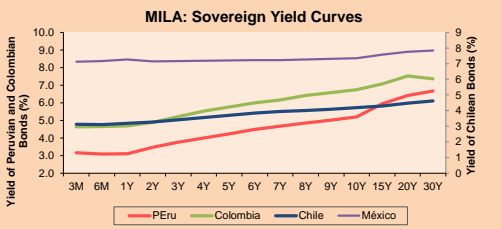
Currency	Price	1D*	5D*	30 D*	YTD*
▼ New Sol (PEN)	3,232.6	-0.08%	-0.16%	-0.34%	-3.68%
▼ Chilean Peso (CLP)	653.92	-0.28%	0.02%	3.65%	-2.46%
▲ Colombian Peso (COP)	3,029.30	0.52%	1.10%	0.72%	0.91%
▲ Mexican Peso (MXN)	19.17	0.59%	2.13%	0.36%	-7.51%

\*Legend: Variation 1D: 1 day; 5D: 5 days; 1M: 1 Month; YTD: Var%12/31/16 to date



Base: 12/09/17=100  
Source: Bloomberg

Instrument	Currency	Price	Bid Yield (%)	Ask Yield (%)	Duration
PERU 4.125 08/25/2027	USD	109.432	3.01	2.98	8.02
PERU 7.125 03/30/19	USD	107.03	1.74	1.49	1.23
PERU 7.375 07/21/25	USD	130.482	2.89	2.83	6.01
PERU 8.75 11/21/33	USD	158.205	3.85	3.82	10.19
PERU 6.55 03/14/37	USD	136.165	3.89	3.85	11.74
PERU 5.625 11/19/2050	USD	128.242	4.08	4.05	17.08
CHILE 2.25 10/30/22	USD	98.76	2.57	2.48	4.60
CHILE 3.875 08/05/20	USD	104.545	2.15	2.04	2.49
CHILE 3.625 10/30/2042	USD	100.607	3.61	3.57	16.50
COLOM 11.75 02/25/20	USD	119.9	2.46	2.33	1.95
COLOM 11.85 03/09/28	USD	170.051	3.64	3.57	6.95
COLOM 10.375 01/28/33	USD	159	4.93	4.73	9.02
COLOM 7.375 09/18/37	USD	133.73	4.75	4.71	11.60
COLOM 6.125 01/18/41	USD	119.893	4.72	4.69	13.11
MEX 4 10/02/23	USD	104.81	3.11	3.06	5.16
MEX5.55 01/45	USD	111.965	4.773	4.746	14.55



Source: Bloomberg

Equity	Exchange	Amt.	Price	▲%
Largest gains				
INDISA	Santia.	CLP	4200.00	18.31
SOCOVESA	Santia.	CLP	309.70	8.67
BESALCO	Santia.	CLP	582.66	8.39
AHCH1	Lima	PEN	1.70	6.25

Per Turnover	Exchange	Amount (US\$)
FALABELLA	Santia.	23,051,979
CENCOSUD	Santia.	22,883,808
COPEC	Santia.	14,722,143
ECOPETROL	Colomb.	13,872,664
CHILE	Colomb.	11,438,399

Largest losses	Exchange	Amt.	Price	▼%
MILPOH	Lima	PEN	3.10	-7.46
CASAGR1	Lima	PEN	5.80	-4.92
AUSTRAC1	Lima	PEN	1.50	-4.46
BBVACL	Santia.	CLP	4300.00	-4.44

Per Volume	Exchange	Volume
BSANTANDER	Santia.	122,528,226
ORO BLANCO	Santia.	103,174,446
NORTEGRAN	Santia.	83,580,949
CHILE	Santia.	82,810,421
VAPORES	Santia.	39,855,420

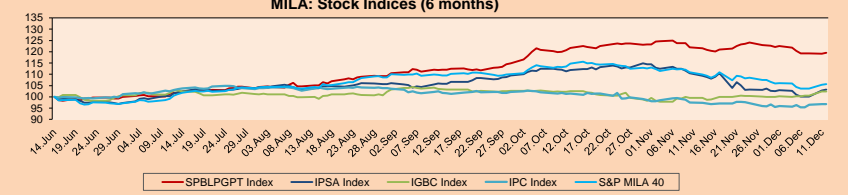
## MILA

Peru: The General Index of the BVL of Peru ended today's session with a positive return of + 0.45%. The index maintains a cumulative positive annual trend of + 23.55% in local currency, while the yield adjusted to foreign currency is + 28.54%. Then, the S & P / BVL Peru SEL obtained a positive result of + 0.29%, while the S & P / BVL LIMA 25 decreased + 0.03%. The spot PEN reached S / 3.2277.

Chile: The IPSA index ended the day with a positive result of + 0.42%. The sectors of the index with the most positive results were Products of first necessity (+ 1.48%) and Products of Non-Basic Consumption (+ 1.11%). On the other hand, the values with the highest results were Salfacorp SA (+ 5.58%) and Masisa SA (+ 4.83%).

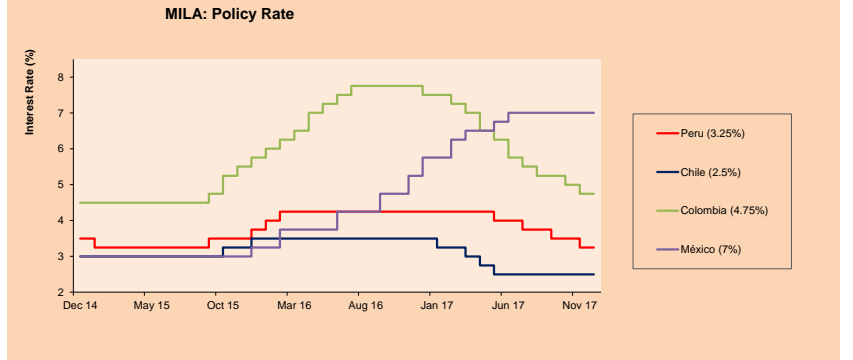
Colombia: The COLCAP index closed the session with neutral results of 0.00%. The sectors with decreasing returns were Telecommunications Services (-2.00%) and Industrial Services (-1.40%). In addition, the shares with the lowest yields were Empresa de Telecomunicaciones (-2.00%) and Avianca Holdings SA (-1.80%).

Mexico: Mexico's IPC index closed today's session with a positive return of +0.27%. The sectors of the index that generated the most positive returns were First Necessity Products (+0.76%) and Telecommunications Services (+0.74%). Finally, the stocks with the highest yields were Alpek SAB de CV (+2.59%) and Grupo Aeroportuario del Sureste SAB de CV (+2.02%)



Base: 15/06/17=100  
Source: Bloomberg

ETFs	Curr.	Close	1D	5D	30 D	YTD	Exchange
▲ iShares MSCI All Peru Capped Index Fund	USD	39.66	0.20%	-0.55%	-4.13%	20.91%	NYSE Arca
▲ iShares MSCI Chile Capped	USD	44.545	0.33%	1.96%	-10.06%	19.04%	BATS
▼ Global X MSCI Colombia	USD	13.87	-0.43%	-0.36%	0.00%	7.19%	NYSE Arca
▼ iShares MSCI Mexico Capped	USD	49.45	-0.50%	-1.81%	-0.60%	12.46%	NYSE Arca
▼ iShares MSCI Emerging Markets	USD	45.86	-0.67%	-0.09%	-0.93%	30.99%	NYSE Arca
▼ Vanguard FTSE Emerging Markets	USD	44.11	-0.72%	-0.05%	-1.08%	23.28%	NYSE Arca
▼ iShares Core MSCI Emerging Markets	USD	55.44	-0.61%	-0.16%	-0.81%	30.60%	NYSE Arca
▼ iShares JP Morgan Emerging Markets Bonds	USD	59.55	-0.37%	0.57%	0.05%	21.75%	BATS
- Morgan Stanley Emerging Markets Domestic	USD	7.68	0.00%	-1.54%	0.26%	7.11%	New York



Source: Bloomberg

Capital Market Laboratory Coordinator: Economist Bruno Bellido Anicam  
Support: Sebastián Butters, Kaori Olulol, Jairo Trujillo, Mario Villar  
e-mail: pulsobursatil@ulima.edu.pe  
facebook: www.facebook.com/pulsobursatil.ul  
Phone number : 4376767 Anexx: 35340 - 35310



# PULSO BURSÁTIL

## WORLD

Main Indices	Close	1 D*	5 D*	1 M*	YTD*	Market Cap. (US\$ Mill.)
▲ Dow Jones (USA)	24,504.80	0.49%	1.34%	4.62%	24.00%	6,739,023
▲ Standard & Poor's 500 (USA)	2,664.11	0.15%	1.31%	3.17%	19.00%	23,585,614
▲ NASDAQ Composite (USA)	6,862.32	-0.19%	1.48%	1.65%	27.48%	10,623,749
▲ Stoxx EUROPE 600 (Europe)	391.63	0.66%	1.26%	0.76%	8.36%	8,795,831
▲ DAX (Germany)	13,183.53	0.46%	1.03%	0.43%	14.83%	1,038,365
▲ FTSE 100 (United Kingdom)	7,500.41	0.63%	2.36%	0.91%	5.01%	1,539,641
▲ CAC 40 (France)	5,427.19	0.75%	0.96%	0.86%	11.62%	1,291,127
▼ IBEX 35 (Spain)	10,288.30	-0.18%	0.75%	1.94%	10.01%	555,942
▲ MSCI AC Asia Pacific Index	170.44	0.78%	0.59%	-0.50%	26.21%	14,571,468
▼ HANG SENG (Hong Kong)	28,793.88	-0.59%	-0.17%	-1.33%	30.80%	2,846,768
▼ SHANGHAI SE Comp. (China)	3,280.81	-1.25%	-0.69%	-4.84%	8.71%	4,937,242
▼ NIKKEI 225 (Japan)	22,866.17	-0.32%	1.08%	2.17%	19.63%	3,580,060
▲ BOVESPA (Brazil)	73,813.53	1.39%	1.75%	2.26%	22.56%	676,434
▲ MERVAL (Argentina)	27,341.58	0.13%	1.89%	0.96%	61.61%	109,161

\*Legend: Variation 1D: 1 Day; 5D: 5 Days; 1M: 1 Month; YTD: Var. % 12/31/16 to date

### Equity

Wall Street (Stocks from S&P 500)

Largest gains	Curr.	Price	▲%	Exchange	Largest losses	Curr.	Price	▼%	Exchange
FXC UN	USD	15.71	4.59	New York	EIX UN	USD	68.58	-6.03	New York
MOS UN	USD	24.82	4.11	New York	MAT LW	USD	14.62	-4.88	NASDAQ GS
STX UW	USD	42.12	4.08	NASDAQ GS	AEE UN	USD	61.36	-3.61	New York
MNK UN	USD	24.06	3.98	New York	AWK UN	USD	89.32	-3.18	New York

Europe (Stocks from STOXX EUROPE 600)

Largest gains	Curr.	Price	▲%	Exchange	Largest losses	Curr.	Price	▼%	Exchange
SNH GY	EUR	0.75	27.77	Xetra	DOKA SE	CHF	891.5	-6.16	SIX Swiss Ex
ATC NA	EUR	8.629	8.46	EN Amsterdam	MRW LN	Gbp	211.5	-4.47	Londres
ATO FP	EUR	133.5	7.14	EN Paris	SBRV LN	Gbp	234.6	-1.13	Londres
DLG GY	EUR	23.26	4.63	Xetra	ULNA	EUR	215	-4.06	EN Amsterdam

## Global Overview

### United States:

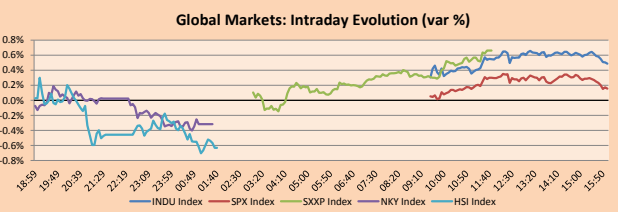
The US stock market ended the session with mixed results, it is widely expected that the Federal Open Market Committee of the central bank announces on Wednesday its third and last rise in interest rates in 2017. In more detail, the Federal Reserve will increase the cost of loans this week in a move anticipated by operators. In greater detail, sales got off to a great start on Black Friday weekend and a massive shift to online shopping has caused shippers to rush to catch up. While consumer spending keeps the gears of the economy in a difficult situation, higher inflation tends to fatten jobs. However, price pressures have been weak for years and even the best efforts of the Federal Reserve to push inflation to a measly 2% in the long term have been insufficient. In business news, the toy company, Mattel, fell -4.88%, after saying in a presentation with the commission of the United States that it expects gross sales for the whole year 2017 to decrease between 5% to 9%.

### Europe:

The European stock market closed the day with positive results among its main indices, with the exception of the Spanish benchmark index IBEX 35, which fell -0.18% in the session. The day's growth was mainly due to increases in oil prices, which positively affected oil and gas stocks. In more detail, the news about the closure of one of the most important pipelines in the North Sea, known as The Forties, for a few weeks to repair a leak, increased the price of oil during the session because this is one of the distributors of major oil supplies. On the other hand, the results of the day were also due to investors focusing on news about mergers and acquisitions. The increase in the shares of the smart card maker, Gemalto NV, stood at +34.75% after the company reviewed an unsolicited acquisition bid for 4.3 trillion euros from the French information technology company Atos SE, which will be answered before the deadline of December 15. Finally, in economic news, inflation in the United Kingdom reached its highest point since March 2012 at 3.1%, which is more than one percentage point above the objective of the Bank of England.

### Asia:

The Asian stock market closed the day with negative results among its main indices. The Asian stocks had losses today due to a new fall in technological stocks. While oil prices rose, the Brent global benchmark oil index rose above 56 a barrel for the first time since June 2015, after news of a major European oil pipeline will be temporarily closed. This helped the Australian benchmark "S & P / ASX" end higher, closing at +0.25%. On the other hand, the benchmark "Hang Seng" of Hong Kong decreased -0.6% due to a fall in the Tencent corporation, after reporting that a unit of this company is in talks to acquire a minority stake in the operator of the longhui supermarket. On the other hand, regional sales also declined, although credit data showed that bank loans rose more than expected in November. The reference index of South Korea "Kospi" fell today despite the fact that Samsung Electronics gained close to +0.6%. In Japan, the Nikkei index fell due to the general decline in the technology sector and a rise in the yen against the dollar.

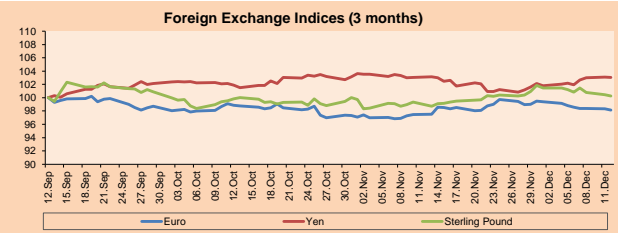


Source: Bloomberg

### Currency

	Price	1 D*	5 D*	1 M*	YTD*
▼ Euro	1.1746	-0.20%	-0.68%	0.69%	11.69%
▼ Yen	113.5500	-0.01%	0.84%	0.02%	-2.92%
▼ Sterling Pound	1.3319	-0.16%	-0.92%	0.93%	7.93%
▲ Yuan	6.6215	0.04%	0.03%	-0.29%	-4.66%
▲ Hong Kong Dollar	7.8065	0.00%	-0.13%	0.05%	0.65%
▲ Brazilian Real	3.3192	0.47%	2.35%	1.08%	1.97%
▲ Argentine Peso	17.3512	0.68%	0.35%	-0.83%	9.26%

\*Legend: Variation 1D: 1 Day; 5D: 5 Days; 1M: 1 Month; YTD: Var. % 12/31/16 to date



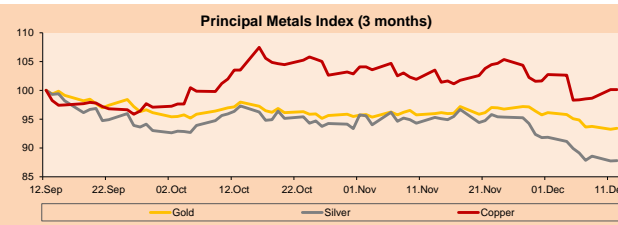
Base: 12/09/17=100

Source: Bloomberg

### Commodities

	Close	1 D*	5 D*	1 M*	YTD*
▲ Oro (US\$ Oz. T) (LME)	1,244.15	0.16%	-1.72%	-2.46%	7.97%
▲ Plata (US\$ Oz. T) (LME)	15.73	0.11%	-2.33%	-6.84%	-1.21%
▲ Cobre (US\$ T) (LME)	6,634.50	0.00%	1.87%	-1.77%	20.12%
▲ Zinc (US\$ T) (LME)	3,129.50	0.00%	-0.02%	-4.22%	22.35%
▼ Petróleo WTI (US\$ Barril) (NYM)	57.24	-1.29%	-0.66%	0.46%	0.44%
▼ Estano (US\$ T) (LME)	19,477.00	0.00%	-0.54%	-0.22%	-8.15%
▼ Plomo (US\$ T) (LME)	2,494.25	0.00%	-0.23%	-0.80%	24.74%
▼ Molibdeno (US\$ T) (LME)	15,635.00	0.00%	-0.01%	-0.04%	5.01%
▼ Azúcar #11 (US\$ Libra) (NYB-ICE)	13.77	-1.29%	-7.58%	-7.95%	-25.89%
▼ Cacao (US\$ T) (NYB-ICE)	1,867.00	-2.35%	-3.36%	-15.60%	-14.48%
▼ Café Arábica (US\$ T) (NYB-ICE)	118.45	-1.29%	-7.03%	-9.51%	-20.82%

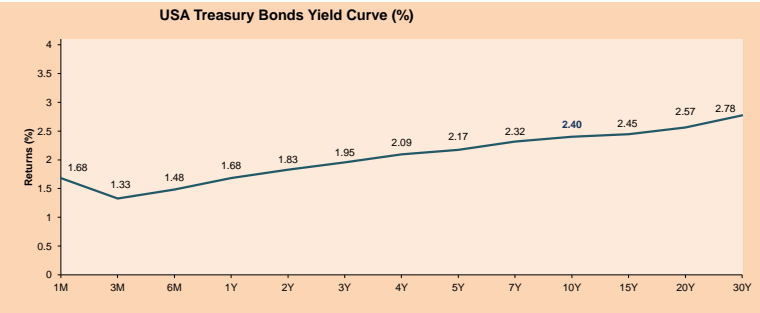
\*Lenda: Variación 1D: 1 Día; 5D: 5 Días; 1M: 1 Mes; YTD: Var. % 31/12/15 a la fecha



Base: 12/09/17=100

Source: Bloomberg

ETFs	Curr.	Close	1D	5D	30 D	YTD	Exchange
SPDR S&P 500 ETF TRUST	USD	266.78	0.18%	1.36%	3.37%	19.35%	NYSE Arca
ISHARES MSCI EMERGING MARKET	USD	45.86	-0.67%	-0.09%	-0.93%	30.99%	NYSE Arca
ISHARES IBOXX USD HIGH YIELD	USD	87.33	-0.05%	0.03%	0.25%	0.90%	NYSE Arca
FINANCIAL SELECT SECTOR SPDR	USD	28.22	1.00%	1.33%	8.21%	21.38%	NYSE Arca
VANECK VECTORS GOLD MINERS E	USD	21.42	-0.42%	-2.50%	-4.89%	2.39%	NYSE Arca
ISHARES RUSSELL 2000 ETF	USD	150.88	-0.31%	-0.03%	2.94%	11.89%	NYSE Arca
SPDR GOLD SHARES	USD	118.15	0.12%	-1.80%	-2.46%	7.07%	NYSE Arca
ISHARES 20+ YEAR TREASURY BO	USD	126.38	-0.04%	-0.88%	1.84%	6.09%	NASDAQ GM
POWERSHARES QQQ TRUST SERIES	USD	155.69	-0.13%	1.88%	1.31%	31.41%	NASDAQ GM
ISHARES NASDAQ BIOTECHNOLOGY	USD	105.78	-0.44%	2.35%	1.63%	19.56%	NASDAQ GM
ENERGY SELECT SECTOR SPDR	USD	69.59	-0.27%	0.35%	-0.10%	-7.61%	NYSE Arca
PROSHARES ULTRA VIX ST FUTUR	USD	11.30	0.36%	-18.41%	-29.64%	-93.54%	NYSE Arca
UNITED STATES OIL FUND LP	USD	11.44	-1.38%	-0.87%	0.18%	-2.39%	NYSE Arca
ISHARES MSCI BRAZIL CAPPED E	USD	40.09	2.56%	1.37%	3.24%	20.25%	NYSE Arca
SPDR S&P OIL & GAS EXP & PR	USD	36.18	-1.54%	-1.29%	-3.59%	-15.07%	NYSE Arca
UTILITIES SELECT SECTOR SPDR	USD	55.25	-1.71%	-0.23%	-0.47%	13.75%	NYSE Arca
ISHARES US REAL ESTATE ETF	USD	82.00	0.40%	1.22%	-0.62%	6.59%	NYSE Arca
SPDR S&P BIOTECH ETF	USD	81.69	-1.68%	1.67%	-1.30%	38.01%	NYSE Arca
ISHARES IBOXX INVESTMENT GRA	USD	120.98	-0.07%	-0.13%	0.91%	3.24%	NYSE Arca
ISHARES JPMORGAN USD EMERGI	USD	115.51	0.03%	-0.12%	0.93%	4.80%	NASDAQ GM
REAL ESTATE SELECT SECT SPDR	USD	33.43	0.45%	1.49%	-1.12%	8.72%	NYSE Arca
ISHARES CHINA LARGE-CAP ETF	USD	45.45	-1.05%	-0.94%	-3.54%	30.94%	NYSE Arca
CONSUMER STAPLES SPDR	USD	56.59	0.02%	-0.07%	4.26%	9.44%	NYSE Arca
VANECK VECTORS JUNIOR GOLD M	USD	30.42	0.20%	-1.43%	-5.26%	-3.58%	NYSE Arca
SPDR BGC BARC HIGH YIELD BND	USD	36.78	0.00%	0.08%	0.27%	0.91%	NYSE Arca
VANGUARD REIT ETF	USD	84.43	0.49%	1.15%	-0.59%	2.30%	NYSE Arca



Source: Bloomberg

Capital Market Laboratory Coordinator: Economist Bruno Bellido Anicama  
Support: Sebastián Butters, Kaori Olulio, Jairo Trujillo, Mario Villar  
e-mail: pulsobursatil@ulima.edu.pe  
facebook: www.facebook.com/pulsobursatil  
Phone number: 4376767 Anexos: 35340 - 35310

# PULSO BURSÁTIL

## LIMA

### Stocks

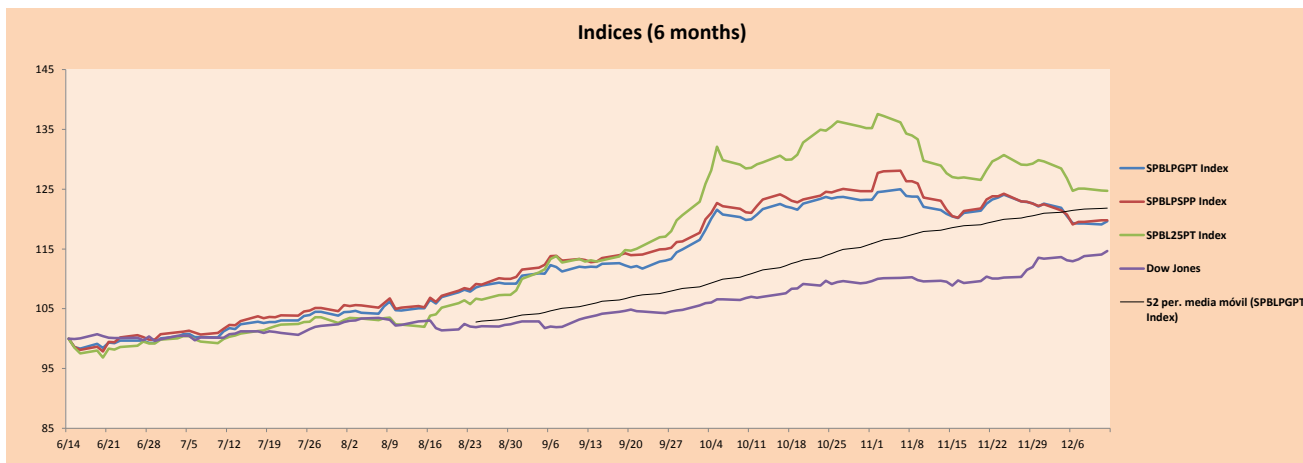
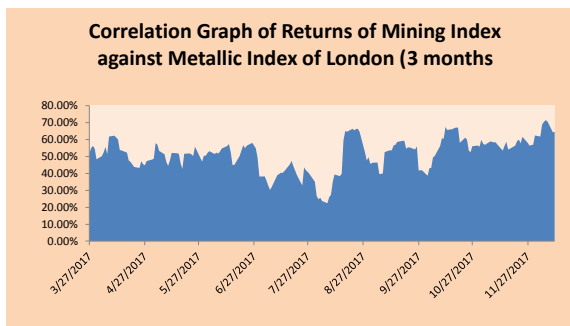
Ticker	Currency	Price	1D*	5D*	30D*	YTD*	Frequency	Volume (US\$)	Beta	Dividend Yield (%)	Price Earning	Market Cap. (M US\$)	Economic Sector*	Index Weight
▲ ALICORC1 PE**	S/.	10.55	1.25%	3.63%	3.43%	44.52%	100.00%	3,314,861	0.70	1.33	22.13	2,786.17	Industrial	3.53%
▲ ATACOCB1 PE**	S/.	0.65	0.00%	0.00%	14.04%	62.50%	100.00%	51,920	2.22	0.00	-	215.76	Mining	1.02%
- BACKUSH1 PE**	S/.	18.40	0.00%	-0.54%	2.22%	15.00%	94.74%	9,620	0.40	3.25	2.58	9,007.34	Industrial	0.82%
▲ BAP PE**	US\$	210.49	1.45%	1.69%	4.17%	36.24%	94.74%	1,091,272	1.04	4.08	-	16,726.96	Diverse	5.82%
▲ BVN PE**	US\$	13.05	1.95%	-2.90%	-5.57%	13.48%	100.00%	599,813	1.32	0.64	-	3,597.03	Mining	5.88%
▼ CASAGRC1 PE**	S/.	5.80	-4.92%	-3.49%	-7.94%	-15.20%	100.00%	1,034,438	0.55	6.96	15.49	151.14	Agricultural	1.31%
- CONTINC1 PE**	S/.	4.05	0.00%	-3.57%	-7.95%	12.34%	100.00%	110,426	0.78	3.65	14.89	6,117.87	Finance	2.85%
▲ CORAREH1 PE**	S/.	0.76	2.70%	-1.30%	-2.56%	55.10%	100.00%	56,512	1.30	4.92	10.15	283.25	Industrial	1.72%
▲ CPACASC1 PE**	S/.	8.19	2.76%	0.00%	-1.33%	31.08%	100.00%	423,190	0.50	4.27	30.97	1,082.18	Industrial	2.38%
▼ CVERDEC1 PE**	US\$	27.30	-1.09%	-2.50%	-8.63%	42.86%	100.00%	231,125	1.34	0.00	38.66	9,556.53	Mining	5.25%
- ENGEPEC1 PE**	S/.	2.00	0.00%	0.00%	-2.91%	-23.08%	73.68%	26,874	0.79	3.19	19.17	1,789.97	Public Services	1.44%
- ENDISPC1**	S/.	5.55	0.00%	-3.98%	-6.72%	-9.90%	68.42%	46,105	0.93	3.43	11.98	1,096.34	Public Services	0.98%
▼ FERREYC1 PE**	S/.	2.49	-0.40%	-3.11%	-2.73%	47.34%	100.00%	400,321	1.11	5.16	9.01	781.31	Diverse	4.90%
▼ GRAMONC1 PE**	S/.	1.97	-1.01%	3.68%	-17.92%	-58.09%	100.00%	263,784	1.61	0.00	11.92	402.25	Diverse	4.05%
▼ IFS PE**	US\$	37.20	-0.11%	-3.20%	-3.30%	16.25%	94.74%	287,258	0.54	3.49	13.20	4,207.72	Diverse	7.22%
▼ INRETC1 PE**	US\$	20.30	-0.98%	-1.46%	-4.02%	4.75%	100.00%	1,258,802	1.00	0.96	24.59	2,086.99	Diverse	5.28%
▼ LUSURC1 PE**	S/.	11.90	-0.83%	-6.30%	-5.18%	-9.09%	94.74%	95,856	0.65	5.21	13.94	1,792.59	Public Services	1.81%
▲ MILPOC1 PE**	S/.	4.42	0.23%	-3.28%	-2.64%	29.24%	100.00%	184,175	1.10	19.39	9.94	1,811.53	Mining	1.56%
- MINSURH1 PE**	S/.	1.71	0.00%	-10.94%	-14.50%	17.93%	84.21%	389,252	1.59	4.03	5.95	1,525.07	Mining	3.09%
▼ PML PE**	US\$	0.28	-0.70%	2.91%	-6.60%	105.07%	94.74%	13,626	1.19	0.00	-	73.51	Mining	2.12%
- RELAPAC1 PE**	S/.	0.29	0.00%	-2.36%	-7.94%	24.46%	100.00%	45,161	1.33	0.00	4.44	317.12	Industrial	2.12%
▲ SCCO PE**	US\$	42.50	0.50%	0.40%	-3.37%	31.62%	94.74%	1,700	1.39	27.60	32,853.71	Mining	2.14%	
▼ SIDERC1 PE**	S/.	0.47	-0.42%	-4.67%	-2.08%	42.42%	89.47%	4,217	1.65	0.00	4.28	178.53	Industrial	1.43%
- TV PE**	US\$	1.02	0.00%	-1.92%	-11.30%	20.00%	78.95%	3,771	1.71	0.00	-	842.11	Mining	2.93%
▼ UNACEMC1 PE**	S/.	2.94	-0.68%	-1.34%	-2.00%	14.84%	100.00%	167,454	0.71	1.77	31.56	1,497.47	Industrial	3.00%
▼ VOLCABC1 PE**	S/.	1.31	-1.50%	-1.50%	-2.96%	81.94%	100.00%	528,384	1.95	1.98	16.89	2,859.67	Mining	5.90%

Quantity of shares: 26  
Source: Bloomberg, Económica  
\* Bloomberg Industry Classification System  
\*\* PER is used in the stock market and original currency of the instrument  
\*Legend: Variation 1D: 1 Day; 5D: 5 Days, 1M: 1 Month; YTD: Var.% 12/31/16 to date

### Sectorial Indices

	Close	1D*	5D*	30D*	YTD*	Beta
▲ Mining Index	325.53	0.42%	-1.54%	-4.97%	31.07%	1.61
▲ Consumer Index	890.36	0.25%	1.28%	0.86%	30.74%	0.43
▲ Industrial Index	234.48	0.14%	-1.13%	-3.84%	6.06%	0.94
▲ Banking and Financial Index	1,076.25	1.24%	1.10%	3.15%	31.87%	0.87
▲ Construction Index	266.30	0.33%	-0.11%	-4.06%	-9.95%	0.82
▼ Services Index	402.84	-0.42%	-3.49%	-5.68%	-16.74%	0.29
▼ Juniors Index	38.72	-2.32%	-2.76%	-8.61%	37.99%	1.47
▼ Electric Index	393.27	-0.42%	-3.49%	-5.68%	-16.74%	0.29

\*Legend: Variation 1D: 1 Day; 5D: 5 Days, 1M: 1 Month; YTD: Var.% 12/31/16 to date



Source: Bloomberg

Capital Market Laboratory Coordinator: Economist Bruno Bellido Anicama  
Support: Sebastián Butters, Kaori Olulo, Jairo Trujillo, Mario Villar  
e-mail: pulsoborsatil@ulima.edu.pe  
facebook: www.facebook.com/pulsoborsatil.ul  
Phone number : 4376767 Anexes: 35340 - 35310

The content of this document is just for informational purposes . The information and opinions expressed should not be consider as recommendations for future decisions .Under any circumstances, the Capital Market Laboratory of University of Lima will be responsible for the use of the statements in this document.

# PULSO BURSÁTIL

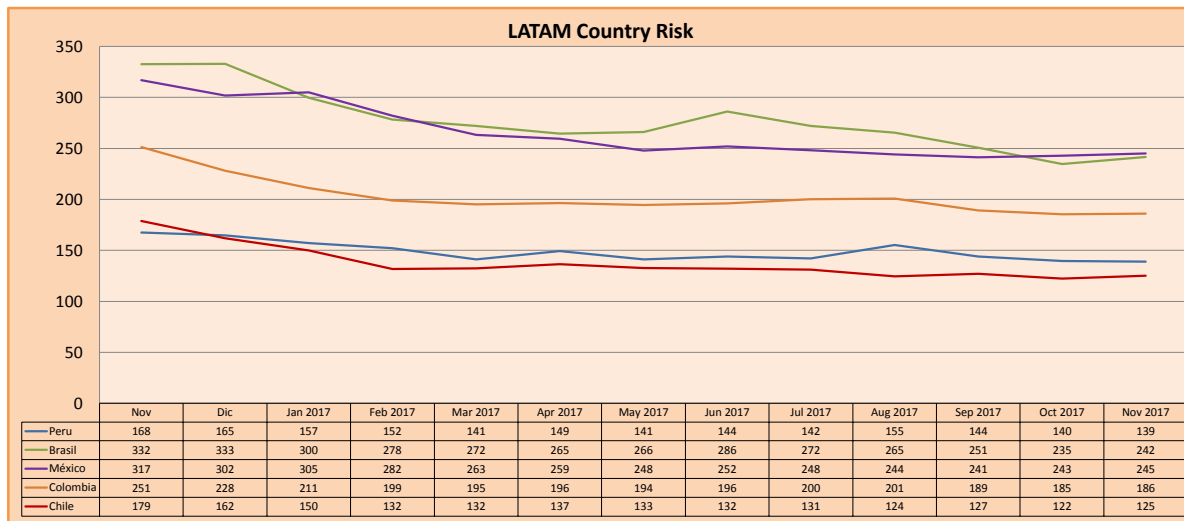
## SOVEREIGN RATING

RISK RATINGS			
Moody's	S&P	Fitch	
Aaa	AAA	AAA	Prime
Aa1	AA+	AA+	High credit quality
Aa2	AA	AA	
Aa3	AA-	AA-	
A1	A+	A+	Medium-high grade, with low credit risk
A2	A	A	
A3	A-	A-	
Baa1	BBB+	BBB+	Moderate Credit Risk
Baa2	BBB	BBB	
Baa3	BBB-	BBB-	
Ba1	BB+	BB+	It has speculative elements and it is subject to substantial credit risk
Ba2	BB	BB	
Ba3	BB-	BB-	
B1	B+	B+	It is considered speculative and it has high credit risk
B2	B	B	
B3	B-	B-	
Caa1	CCC+	CCC	Bad credit conditions and it is subject to high credit risk
Caa2	CCC		
Caa3	CCC-		
Ca	CC	DDD	Very close to default or in default
	C		
C	D		

Source: Bloomberg

Latin America Credit Rating			
Clasificadora de riesgo			
Country	Moody's	Fitch	S&P
Peru	A3	BBB+	BBB+
Mexico	A3	BBB+	BBB+
Venezuela	Caa3	RD	SD
Brazil	Ba2	BB	BB
Colombia	Baa2	BBB	BBB-
Chile	Aa3	A	A+
Argentina	B2	B	B+
Panama	Baa2	BBB	BBB

Source: Bloomberg



Source: Bloomberg

Capital Market Laboratory Coordinator: Economist Bruno Bellido Anicama  
Support: Sebastián Butters, Kaori Olulo, Jairo Trujillo, Mario Villar  
e-mail: pulsobursatil@ulima.edu.pe  
facebook: www.facebook.com/pulsobursatil.ul  
Phone number : 4376767 Anexes: 35340 - 35310

The content of this document is just for informational purposes. The information and opinions expressed should not be considered as recommendations for future decisions. Under any circumstances, the Capital Market Laboratory of University of Lima will be responsible for the use of the statements in this document.