



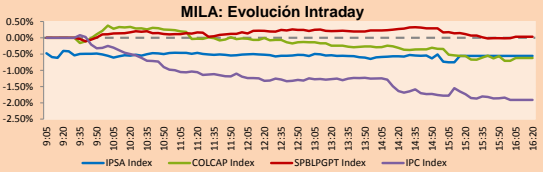
PULSO BURSÁTIL

Lima, January 10, 2018

MILA

Main Indices	Close	1 D	5 D	1 M	YTD	Market Cap. (US\$ bill)
▼ IPSA (Chile)	5,678.09	-0.56%	1.10%	16.18%	2.04%	226.51
▼ IGPA (Chile)	28,570.82	-0.52%	1.21%	16.07%	2.11%	260.99
▼ IGBC (Colombia)	11,809.77	-0.62%	2.44%	8.63%	2.89%	112.58
▼ COLCAP (Colombia)	1,537.70	-0.62%	1.39%	6.10%	1.59%	114.30
▲ S&P/BVL (Perú)*	20,554.53	0.03%	1.09%	6.88%	2.90%	109.49
▲ S&P/BVL SEL (Perú)	378.99	0.28%	1.51%	7.35%	2.98%	87.42
▲ S&P/BVL LIMA 25	31,877.01	0.23%	2.35%	6.13%	3.61%	101.54
▲ IPC (México)	48,785.25	-1.84%	-2.00%	2.55%	-1.15%	306.88
▼ S&P MILA 40	759.69	-0.24%	1.33%	17.38%	4.20%	326.01

* Market Cap. Of the last price Legend: Variation 1D: 1 day; 5D: 5 days; 1M: 1 Month; YTD: Var%12/31/16 to date



Source: Bloomberg

Currency	Price	1D*	5D*	30 D*	YTD*
▲ New Sol (PEN)	3,222.00	0.11%	0.11%	-0.41%	-0.49%
▲ Chilean Peso (CLP)	609.32	0.21%	0.38%	-7.09%	-0.99%
▲ Colombian Peso (COP)	2,890.50	-0.68%	-0.42%	-4.07%	-3.23%
▲ Mexican Peso (MXN)	19.29	0.29%	-0.28%	1.24%	-1.85%

*Legend: Variation 1D: 1 day; 5D: 5 days; 1M: 1 Month; YTD: Var%12/31/16 to date

Equity	Exchange	Amt.	Price	▲%
Largest gains				
HIPERMARC	Santia.	CLP	5.75	15.00
MICHEH1	Lima	PEN	2.60	12.07
AZUL AZUL	Santia.	CLP	820.00	4.46
INVERMAR	Santia.	CLP	125.00	4.17

Largest losses	Exchange	Amt.	Price	▼%
ELCOMEI1	Lima	PEN	2.29	-8.40
DNT	Lima	USD	0.12	-6.45
GANADERO	Colomb.	COP	270.00	-5.26
ESVAL-C	Santia.	CLP	0.02	-4.55

Per Turnover	Exchange	Amount (US\$)
ECOPETROL	Colomb.	28,522,470
BANMEDICA	Santia.	17,287,419
SQM-B	Santia.	11,765,654
CENCOSUD	Santia.	11,584,937
PFBOLOM	Santia.	7,886,912

Per Volume	Exchange	Volume
VAPORES	Santia.	199,057,011
ESVAL-C	Santia.	140,221,263
NORTEGRAN	Santia.	61,939,506
BSANTANDER	Santia.	41,424,116
ECOPETROL	Colomb.	32,007,488

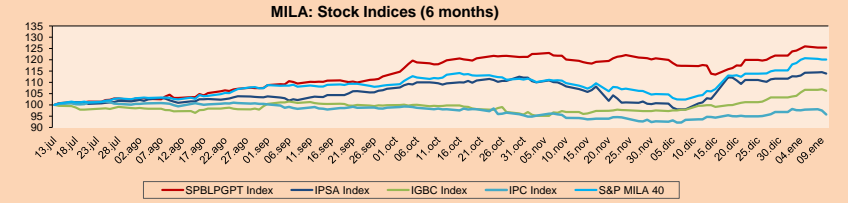
MILA

Peru: The General Index of the BVL of Peru ended today's session with a positive return of +0.03%. The index maintains a cumulative positive annual trend of +2.90% in local currency, while the adjusted return to foreign currency is +3.41%. Then, the S&P/BVL Peru SEL obtained a positive result of +0.28%, while the S&P/BVL LIMA 25 grew +0.23%. The spot PEN reached S/3.2220.

Chile: The IPSA index ended the day with a negative result of -0.56%. The sectors of the index with the most negative results were Information Technology (-1.93%) and Energy (-1.76%). On the other hand, the values with the most bearish results were Inversiones La Construcción SA (-3.72%) and Sigdo Koppers SA (-3.36%).

Colombia: The COLCAP index closed the session with negative results of -0.62%. The sectors with decreasing returns were Industrial (-1.31%) and Finance (-1.04%). In addition, the stocks with the lowest yields were Cementos Argos SA (-2.56%) and Grupo de Inversiones Sudamericana SA (-2.23%).

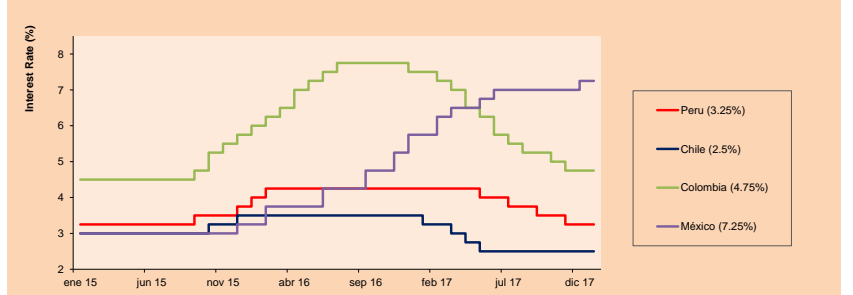
Mexico: The IPC index of Mexico closed the day today with a negative yield of -1.84%. The sectors of the index that generated the most negative returns were Health (-5.14%) and Telecommunications Services (-2.84%). Finally, the stocks with the lowest returns were Genomma Lab Internacional SAB de CV (-5.19%) and Alsea SAB de CV (-4.04%).



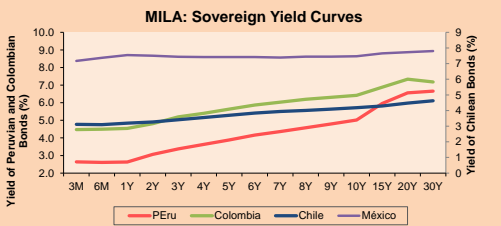
Base: 11/07/17=100 Source: Bloomberg

ETFs	Curr.	Close	1D	5D	30 D	YTD	Exchange
▲ iShares MSCI All Peru Capped Index Fund	USD	42.3	0.64%	0.36%	8.96%	3.22%	NYSE Arca
▲ iShares MSCI Chile Capped	USD	54.1	-0.48%	0.63%	21.96%	3.72%	BATS
▼ Global X MSCI Colombia	USD	14.8725	-0.12%	-0.05%	7.59%	3.02%	NYSE Arca
▼ iShares MSCI Mexico Capped	USD	49.48	-2.19%	-1.77%	0.56%	0.39%	NYSE Arca
▼ iShares MSCI Emerging Markets	USD	48.74	-0.63%	0.56%	7.17%	3.44%	NYSE Arca
▼ Vanguard FTSE Emerging Markets	USD	47.65	-0.44%	1.06%	7.76%	3.79%	NYSE Arca
▼ iShares Core MSCI Emerging Markets	USD	58.78	-0.64%	0.46%	7.23%	3.30%	NYSE Arca
▼ iShares JP Morgan Emerging Markets Bonds	USD	62.4	-0.27%	0.73%	6.14%	2.70%	BATS
▼ Morgan Stanley Emerging Markets Domestic	USD	7.91	-0.13%	1.54%	5.01%	2.73%	New York

MILA: Policy Rate



Source: Bloomberg



Source: Bloomberg

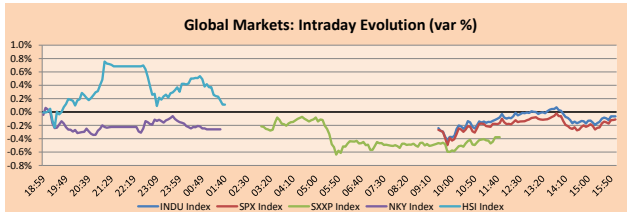
Capital Market Laboratory Coordinator: Economist Bruno Bellido Anicam
Support: Sebastián Butters, Kaori Olulol, Jairo Trujillo, Mario Villar
e-mail: pulsobursatil@ulima.edu.pe
facebook: www.facebook.com/pulsobursatil.ul
Phone number : 4376767 Anexxos: 35340 - 35310

PULSO BURSÁTIL

WORLD

Main Indices	Close	1 D*	5 D*	1 M*	YTD*	Market Cap. (US\$ Mill.)
▼ Dow Jones (USA)	25,369.13	-0.07%	1.79%	4.27%	2.63%	6,946,968
▼ Standard & Poor's 500 (USA)	2,748.23	-0.11%	1.30%	3.65%	2.79%	24,387,894
▼ NASDAQ Composite (USA)	7,153.57	-0.14%	1.25%	4.58%	3.62%	11,280,721
▼ Stoxx EUROPE 600 (Europe)	398.60	-0.38%	2.15%	2.40%	2.42%	8,895,411
▼ DAX (Germany)	13,281.34	-0.78%	2.34%	0.97%	2.82%	1,038,467
▼ FTSE 100 (United Kingdom)	7,748.51	0.23%	1.01%	4.80%	0.79%	1,584,806
▼ CAC 40 (France)	5,504.68	-0.35%	3.25%	1.96%	3.52%	1,295,651
▲ IBEX 35 (Spain)	10,428.30	0.02%	3.09%	1.04%	3.83%	552,381
▲ MSCI AC Asia Pacific Index	180.57	0.17%	1.58%	6.95%	4.07%	15,410,791
▲ HANG SENG (Hong Kong)	31,073.72	0.20%	1.68%	7.28%	3.89%	3,141,080
▲ SHANGHAI SE Comp. (China)	3,421.83	0.23%	1.68%	3.00%	3.47%	5,282,417
▼ NIKKEI 225 (Japan)	23,788.20	-0.26%	4.41%	3.70%	4.49%	3,799,684
▼ BOVESPA (Brazil)	78,200.57	-0.84%	0.26%	7.52%	2.35%	757,536
▼ Merval (Argentina)	31,632.36	-1.58%	0.50%	17.85%	5.21%	128,917

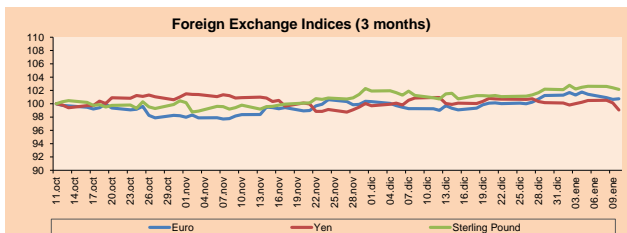
*Legend: Variation 1D: 1 Day; 5D: 5 Days; 1M: 1 Month; YTD: Var.% 12/31/16 to date



Source: Bloomberg

Currency	Price	1 D*	5 D*	1 M*	YTD*
▲ Euro	1.1948	0.09%	-0.56%	1.52%	-0.47%
▲ Yen	111.4400	-1.07%	-0.95%	-1.87%	-1.11%
▼ Sterling Pound	1.3507	-0.24%	-0.07%	1.24%	-0.04%
▼ Yuan	6.5082	-0.33%	0.08%	-1.67%	0.02%
▲ Hong Kong Dollar	7.8225	0.02%	0.07%	0.21%	0.11%
▲ Brazilian Real	3.2354	-0.43%	-0.10%	-2.06%	-2.21%
▼ Argentine Peso	18.6319	-1.48%	1.01%	8.09%	0.05%

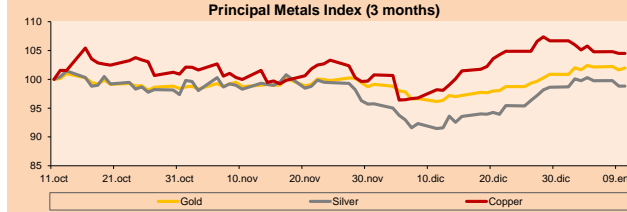
*Legend: Variation 1D: 1 Day; 5D: 5 Days; 1M: 1 Month; YTD: Var.% 12/31/16 to date



Base: 11/10/17=100
Source: Bloomberg

Commodities	Close	1 D*	5 D*	1 M*	YTD*
▲ Oro (US\$ Oz. T) (LME)	1,316.92	0.32%	0.28%	6.04%	1.06%
▼ Plata (US\$ Oz. T) (LME)	16.97	0.00%	-0.94%	8.04%	0.19%
- Cobre (US\$ TM) (LME)	7,059.50	0.00%	-0.58%	6.41%	-2.05%
- Zinc (US\$ TM) (LME)	3,350.50	0.00%	0.12%	7.06%	0.39%
▲ Petróleo WTI (US\$ Barril) (NYM)	63.50	0.86%	3.03%	9.39%	5.10%
- Estano (US\$ TM) (LME)	19,976.00	0.00%	0.07%	2.56%	-0.60%
- Plomo (US\$ TM) (LME)	2,554.50	0.00%	-1.24%	2.42%	2.81%
- Molibdeno (US\$ TM) (LME)	15,635.00	0.00%	0.01%	0.00%	-0.02%
▼ Azúcar #11 (US\$ Libra) (NYB-ICE)	14.65	-0.54%	-4.31%	5.02%	-3.36%
▼ Cacao (US\$ TM) (NYB-ICE)	1,941.00	2.21%	1.78%	1.52%	2.59%
▼ Café Arábica (US\$ TM) (NYB-ICE)	123.95	-0.96%	-3.62%	3.29%	-1.78%

*Lenda: Variación 1D: 1 Día; 5D: 5 Días; 1M: 1 Mes; YTD: Var.% 31/12/15 a la fecha



Base: 11/10/17=100
Source: Bloomberg

Equity

Wall Street (Stocks from S&P 500)

Largest gains	Curr.	Price	▲ %	Exchange	Largest losses	Curr.	Price	▼ %	Exchange
ISRG US	USD	423.76	6.58	NASDAQ GS	EBAY US	USD	37.7	-4.63	NASDAQ GS
DISCK UW	USD	21.69	5.80	NASDAQ GS	XRAY UW	USD	62.76	-4.11	NASDAQ GS
CTL UN	USD	17.48	5.68	New York	COG UN	USD	27.96	-3.98	New York
DISCA UW	USD	22.83	5.45	NASDAQ GS	KSU UN	USD	106.54	-3.56	New York

Europe (Stocks from STOXX EUROPE 600)

Largest gains	Curr.	Price	▲ %	Exchange	Largest losses	Curr.	Price	▼ %	Exchange
CBK GY	EUR	13.258	5.14	Xetra	ATC NA	EUR	9.684	-7.24	EN Amsterdam
BAMI IM	EUR	2.852	4.78	Borsa Italiana	ONTEX BB	EUR	27.6	-4.83	EN Brussels
RBS LN	GBP	293.4	4.50	Londres	CAPC LN	GBP	305	-4.66	Londres
ISP IM	EUR	2.97	4.58	Borsa Italiana	VIE FP	EUR	20.95	-4.47	EN Paris

Global Overview

United States:

The US stock market ended the day with negative results, after a report was revealed, in which Canadian authorities expect President Trump to announce the end of the North American Free Trade Agreement. According to Reuters, which cited two Canadian government officials, Canada is increasingly convinced that President Donald Trump will announce that the US will leave Nafta. Generating that the US dollar -0.21% will strengthen against the Canadian dollar -0.7225% and the Mexican peso -0.435715%, while the specific exchange-traded funds of the country, the iShares MSCI Mexico ETF -2.19% and the MSCI Canada ETF -0.99% were lower after the report. On the other hand, the yield on US 10-year Treasury bonds rose, as China is considering stopping purchases of US debt. This increase can be seen in two ways, the first is that investors trust the economic prospects of a country and the second is that the investor is attracted by a secure portfolio with high yield, leaving aside the variable income. Finally, the image technology company, Eastman Kodak Co., rose around +236.50% in the last 3 days, due to said it would launch a cryptocurrency, with the intention of helping photographers to license their work and charge for the use.

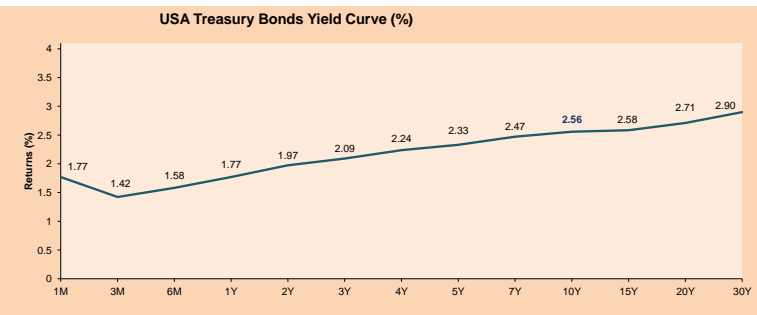
Europe:

The European stock market closed with mixed results among its main indices. UK stocks managed to reach a new record on the day, driven by increases in banking stocks in Europe. This increase was due to the fact that the shares of the banks followed the increase in the yields of the US Treasury bonds, after it exceeded 2.5% for the first time since March 2017. This increase in yields was after the Bank of Japan announced that it is considering halting or slowing purchases of US Treasury bonds, which creates upward pressure on US Treasury yields. For its part, the pound sterling fell against the US dollar, moving to 1.3512 dollars per pound of 1.3539 from the previous session, thus improving the country's export earnings. On the other hand, the German benchmark index, the DAX, closed at -0.8% after having had a session in which it fell to -1%. Likewise, the French benchmark index, the CAC 40, fell by -0.4% after having reached a maximum of 10 years in the previous session.

Asia:

The Asian stock market closed the day with mixed results among its main indices. Some regional markets declined today, stabilizing the big gains at the beginning of the year. However, the Hong Kong benchmark "Hang Seng" reached a maximum of 10 years, recording its daily gain number 12. The index was helped by financial stocks such as HSBC that rose by 1.4% closing in a maximum of three years. In Shanghai, the financial sector also helped the composite index "SHCOMP" ending with eight consecutive gains, its longest "streak" since March 2015. On the other hand, in Japan, stocks did not perform as well, the benchmark "Nikkei 225" closed in negative territory, erasing the good results of the previous day, despite the fact that the yen traded stronger against the dollar. In Australia, South Korea and Taiwan, benchmark indices closed negative. The South Korean index "Kospi" finished with losses due to a fall of Samsung Electronics, investors continue with the bearish outlook for the possible results of the fourth quarter. With respect to China, inflation is below expectations, but this did not affect the yuan's yield so much, as investors reacted to the Central Bank announcement on Tuesday afternoon, where it was reported that banks could independently adjust the "Countercyclical factor" that introduced last year to curb fluctuations in the currency.

ETFs	Curr.	Close	1D	5D	30 D	YTD	Exchange
SPDR S&P 500 ETF TRUST	USD	274.12	-0.15%	1.35%	3.46%	2.72%	NYSE Arca
ISHARES MSCI EMERGING MARKET	USD	48.74	-0.63%	0.56%	7.17%	3.44%	NYSE Arca
ISHARES IBOXX USD HIGH YIELD	USD	87.44	-0.22%	-0.36%	0.50%	0.21%	NYSE Arca
FINANCIAL SELECT SECTOR SPDR	USD	28.83	0.84%	2.71%	3.67%	3.30%	NYSE Arca
VANECK VECTORS GOLD MINERS E	USD	23.25	0.61%	-1.36%	8.96%	0.04%	NYSE Arca
ISHARES RUSSELL 2000 ETF	USD	154.84	0.01%	0.21%	2.69%	1.95%	NYSE Arca
SPDR GOLD SHARES	USD	125.03	0.24%	0.17%	5.95%	1.12%	NYSE Arca
ISHARES 20+ YEAR TREASURY BO	USD	123.80	-0.12%	-1.82%	-1.87%	-2.41%	NASDAQ GM
POWERSHARES QQQ TRUST SERIES	USD	162.18	-0.23%	1.34%	4.25%	4.12%	NASDAQ GM
ISHARES NASDAQ BIOTECHNOLOGY	USD	110.91	0.45%	0.03%	4.53%	3.88%	NASDAQ GM
ENERGY SELECT SECTOR SPDR	USD	75.14	-0.12%	0.79%	8.40%	3.99%	NYSE Arca
PROSHARES ULTRA VIX ST FUTUR	USD	8.78	-2.01%	-2.98%	-22.02%	-14.01%	NYSE Arca
UNITED STATES OIL FUND LP	USD	12.68	0.88%	2.76%	9.31%	5.58%	NYSE Arca
ISHARES MSCI BRAZIL ETF	USD	42.31	-0.07%	0.28%	9.39%	4.60%	NYSE Arca
SPDR S&P OIL & GAS EXP & PR	USD	38.48	-0.59%	-0.31%	7.90%	3.50%	NYSE Arca
UTILITIES SELECT SECTOR SPDR	USD	50.74	-1.09%	-2.01%	-8.89%	-3.68%	NYSE Arca
ISHARES US REAL ESTATE ETF	USD	77.86	-1.22%	-3.24%	-3.65%	-3.89%	NYSE Arca
SPDR S&P BIOTECH ETF	USD	88.59	1.28%	0.25%	6.69%	4.38%	NYSE Arca
ISHARES IBOXX INVESTMENT GRA	USD	120.52	0.07%	-0.37%	-0.24%	-0.86%	NYSE Arca
ISHARES JPMORGAN USD EMERGI	USD	115.81	-0.29%	-0.46%	0.62%	-0.25%	NASDAQ GM
REAL ESTATE SELECT SECT SPDR	USD	31.62	-1.56%	-3.48%	-3.94%	-4.01%	NYSE Arca
ISHARES CHINA LARGE-CAP ETF	USD	48.62	0.10%	0.91%	7.96%	5.31%	NYSE Arca
CONSUMER STAPLES SPDR	USD	56.71	-0.49%	0.34%	0.97%	-0.32%	NYSE Arca
VANECK VECTORS JUNIOR GOLD M	USD	33.68	1.23%	-2.49%	10.97%	-1.32%	NYSE Arca
SPDR BBG BARC HIGH YIELD BND	USD	36.83	-0.19%	-0.30%	0.58%	0.30%	NYSE Arca
VANGUARD REIT ETF	USD	79.52	-1.12%	-3.53%	-3.89%	-4.17%	NYSE Arca



Source: Bloomberg

Capital Market Laboratory Coordinator: Economist Bruno Bellido Anicama
Support: Sebastián Butters, Kaori Olulio, Jairo Trujillo, Mario Villar
e-mail: pulsobursatil@ulima.edu.pe
facebook: www.facebook.com/pulsobursatil.ulima
Phone number: 4376767 Anexos: 35340 - 35310

PULSO BURSÁTIL

LIMA

Stocks

Ticker	Currency	Price	1D*	5D*	30D*	YTD*	Frequency	Volume (US\$)	Beta	Dividend Yield (%)	Price Earning	Market Cap. (M US\$)	Economic Sector*	Index Weight
▼ ALICORC1 PE**	S/.	11.20	-0.44%	4.67%	7.49%	5.66%	100.00%	241,633	0.93	1.25	23.49	2,966.71	Industrial	3.53%
▲ ATACOB1 PE**	S/.	0.73	1.39%	4.29%	12.31%	7.35%	100.00%	196,296	2.36	0.00	-	215.68	Mining	1.02%
- BACKUS1 PE**	S/.	18.30	0.00%	0.77%	0.80%	0.74%	50.00%	64,109	0.42	0.00	5.31	9,032.19	Industrial	0.82%
▼ BAP PE**	US\$	219.10	-0.32%	0.50%	5.60%	5.34%	100.00%	464,471	1.06	3.92	-	17,411.17	Diverse	5.82%
▼ BVN PE**	US\$	14.20	-0.07%	-2.74%	10.94%	0.57%	100.00%	108,784	1.16	0.59	-	3,908.54	Mining	5.88%
- CASAGRC1 PE**	S/.	6.03	0.00%	0.50%	-1.15%	-2.58%	100.00%	52,868	0.73	6.69	16.10	157.65	Agricultural	1.31%
▲ CONTINC1 PE**	S/.	4.36	0.23%	2.35%	7.65%	5.06%	83.33%	368,580	0.82	3.39	16.03	6,607.82	Finance	2.85%
- CORARE11 PE**	S/.	0.74	0.00%	1.37%	0.00%	2.78%	100.00%	29,877	1.54	5.05	9.89	291.70	Industrial	1.72%
- CPACASC1 PE**	S/.	8.11	0.00%	0.12%	1.76%	-0.49%	100.00%	67,827	0.64	4.32	30.66	1,074.80	Industrial	2.38%
▲ CVERDEC1 PE**	US\$	31.00	0.81%	4.38%	12.32%	4.38%	100.00%	977,930	1.37	0.00	43.90	10,851.74	Mining	5.25%
- ENGEPEC1 PE**	S/.	1.98	0.00%	-1.00%	-1.00%	0.00%	83.33%	6,145	0.92	3.22	18.98	1,777.90	Public Services	1.44%
- ENDISPC1**	S/.	5.60	0.00%	-0.71%	0.90%	-0.71%	66.67%	5,214	0.96	3.40	12.09	1,109.86	Public Services	0.98%
▼ FERREYC1 PE**	S/.	2.58	-0.39%	-0.39%	3.20%	1.18%	100.00%	140,569	1.17	4.98	9.33	812.22	Diverse	4.90%
▲ GRAMONC1 PE**	S/.	1.91	1.60%	3.24%	-4.02%	2.14%	94.44%	212,864	1.55	0.00	11.56	391.28	Diverse	4.05%
▲ IFS PE**	US\$	40.00	0.76%	4.25%	7.41%	3.90%	88.89%	64,920	0.58	3.25	14.14	4,524.43	Diverse	7.22%
- INRETC1 PE**	US\$	20.83	0.00%	-0.33%	1.61%	-0.81%	100.00%	31,245	1.00	0.93	25.14	2,141.48	Diverse	5.28%
- LUSURC1 PE**	S/.	12.00	0.00%	-0.83%	1.50%	-0.41%	88.89%	927	0.52	0.00	14.06	1,813.60	Public Services	1.81%
▲ MILPOC1 PE**	S/.	5.00	3.09%	6.38%	13.38%	8.70%	100.00%	82,822	1.16	17.14	11.29	2,055.60	Mining	1.56%
▲ MINSUR1 PE**	S/.	1.98	1.02%	5.32%	15.79%	10.00%	94.44%	40,840	1.70	3.48	13.84	1,771.68	Mining	3.09%
▼ PML PE**	US\$	0.32	-2.42%	0.00%	12.98%	0.63%	94.44%	136,620	1.32	0.00	-	83.73	Mining	2.12%
▲ RELAPAC1 PE**	S/.	0.36	1.96%	13.04%	25.52%	17.42%	100.00%	751,818	1.38	0.00	5.59	399.35	Industrial	2.12%
▲ SCCO PE**	US\$	49.55	0.71%	1.12%	17.17%	4.18%	83.33%	20,591	1.19	1.19	32.18	38,303.56	Mining	2.14%
▲ SIDERC1 PE**	S/.	0.48	0.63%	-2.42%	2.33%	0.63%	88.89%	34,572	1.75	0.00	4.40	184.07	Industrial	1.43%
▼ TV PE**	US\$	1.23	-0.81%	2.50%	20.59%	2.50%	88.89%	110,843	1.46	0.00	-	1,015.64	Mining	2.93%
▲ UNACEMC1 PE**	S/.	2.93	1.03%	-1.35%	-1.01%	-2.33%	94.44%	19,937	0.74	1.77	31.45	1,497.29	Industrial	3.00%
▼ VOLCABC1 PE**	S/.	1.41	-0.70%	4.44%	6.02%	6.82%	100.00%	4,796,403	1.80	1.84	18.25	3,096.99	Mining	5.90%

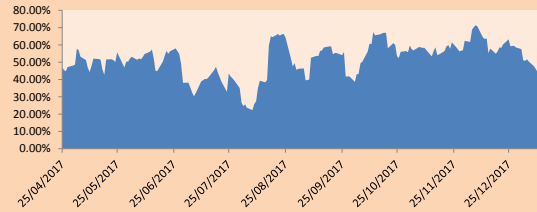
Quantity of shares: 26
 Source: Bloomberg, Económática
 * Bloomberg Industry Classification System
 ** PER is used in the stock market and original currency of the instrument
 *Legend: Variation 1D: 1 Day; 5D: 5 Days; 1M: 1 Month; YTD: Var.% 12/31/16 to date

Sectorial Indices

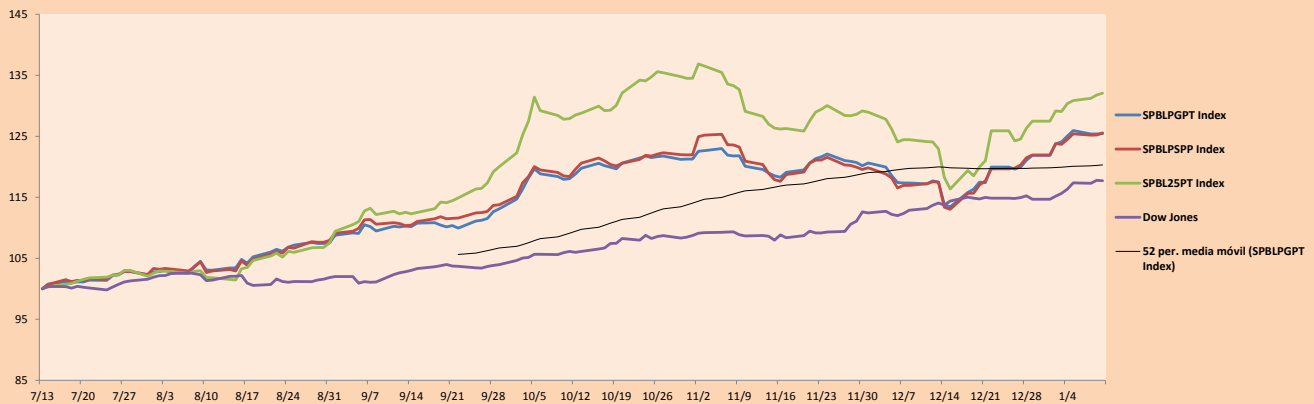
	Close	1D*	5D*	30D*	YTD*	Beta
▲ Mining Index	366.39	0.37%	1.08%	13.02%	3.07%	1.14
▼ Consumer Index	926.90	-0.22%	2.58%	4.36%	2.80%	0.65
▲ Industrial Index	237.41	0.33%	0.41%	1.39%	0.61%	1.07
▼ Banking and Financial Index	1,118.30	-0.10%	0.91%	5.20%	4.60%	1.09
▲ Construction Index	264.12	0.65%	0.31%	-0.49%	-0.38%	0.95
▼ Services Index	410.13	-1.38%	-2.09%	1.39%	-1.55%	0.53
▼ Juniors Index	44.28	-2.42%	-1.84%	11.71%	1.03%	1.43
▼ Electric Index	400.39	-1.38%	-2.09%	1.39%	-1.55%	0.53

*Legend: Variation 1D: 1 Day; 5D: 5 Days; 1M: 1 Month; YTD: Var.% 12/31/16 to date

Correlation Graph of Returns of Mining Index against Metallic Index of London (3 months)



Indices (6 months)



Source: Bloomberg

Capital Market Laboratory Coordinator: Economist Bruno Bellido Anicama
 Support: Sebastián Butters, Kaori Olulo, Jairo Trujillo, Mario Villar
 e-mail: pulsobursatil@ulima.edu.pe
 facebook: www.facebook.com/pulsobursatil.ul
 Phone number : 4376767 Anexxes: 35340 - 35310

The content of this document is just for informational purposes . The information and opinions expressed should not be consider as recommendations for future decisions . Under any circumstances, the Capital Market Laboratory of University of Lima will be responsible for the use of the statements in this document.

PULSO BURSÁTIL

SOVEREIGN RATING

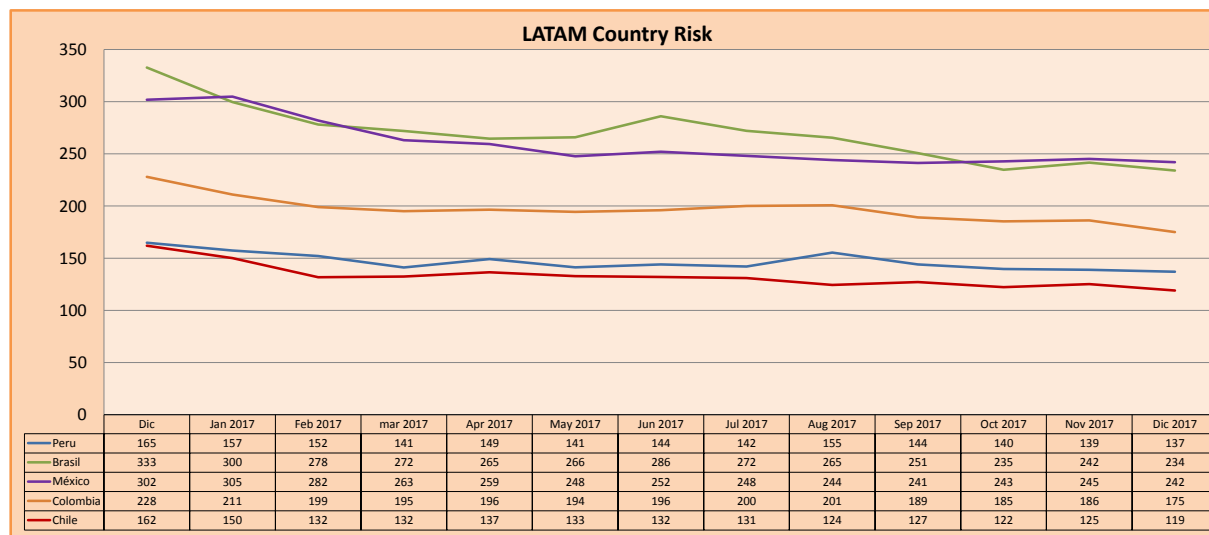
RISK RATINGS

Moody's	S&P	Fitch	
Aaa	AAA	AAA	Prime
Aa1	AA+	AA+	High credit quality
Aa2	AA	AA	
Aa3	AA-	AA-	
A1	A+	A+	Medium-high grade, with low credit risk
A2	A	A	
A3	A-	A-	
Baa1	BBB+	BBB+	Moderate Credit Risk
Baa2	BBB	BBB	
Baa3	BBB-	BBB-	
Ba1	BB+	BB+	It has speculative elements and it is subject to substantial credit risk
Ba2	BB	BB	
Ba3	BB-	BB-	
B1	B+	B+	It is considered speculative and it has high credit risk
B2	B	B	
B3	B-	B-	
Caa1	CCC+		Bad credit conditions and it is subject to high credit risk
Caa2	CCC		
Caa3	CCC-	CCC	
Ca	C		Very close to default or in default
		DDD	
C	D	DD D	

Source: Bloomberg

Latin America Credit Rating			
Clasificadora de riesgo			
Country	Moody's	Fitch	S&P
Peru	A3	BBB+	BBB+
Mexico	A3	BBB+	BBB+
Venezuela	Caa3	RD	SD
Brazil	Ba2	BB	BB
Colombia	Baa2	BBB	BBB-
Chile	Aa3	A	A+
Argentina	B2	B	B+
Panama	Baa2	BBB	BBB

Source: Bloomberg



Source: Bloomberg

Capital Market Laboratory Coordinator: Economist Bruno Bellido Anicama
Support: Sebastián Butters, Kaori Olulo, Jairo Trujillo, Mario Villar
e-mail: pulsobursatil@ulima.edu.pe
facebook: www.facebook.com/pulsobursatil.ul
Phone number : 4376767 Anexx: 35340 - 35310

The content of this document is just for informational purposes. The information and opinions expressed should not be considered as recommendations for future decisions. Under any circumstances, the Capital Market Laboratory of University of Lima will be responsible for the use of the statements in this document.