



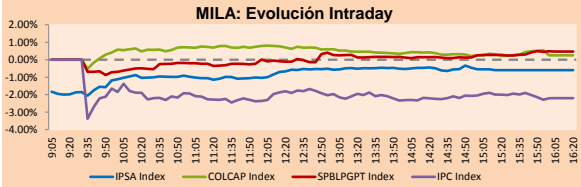
PULSO BURSÁTIL

Lima, February 6, 2018

MILA

Main Indices	Close	1 D	5 D	1 M	YTD	Market Cap. (US\$ bill)
▼ IPSA (Chile)	5,697.28	-0.60%	-2.77%	0.03%	2.38%	223.48
▼ IGPA (Chile)	28,720.16	-0.60%	-2.39%	0.29%	2.64%	275.19
▲ IGBC (Colombia)	11,760.91	0.36%	-4.11%	-0.78%	2.46%	113.08
▲ COLCAP (Colombia)	1,526.83	0.25%	-3.55%	-1.21%	0.87%	114.47
▲ S&P/BVL (Perú)*	20,606.98	0.47%	-2.51%	-0.16%	3.17%	107.05
▲ S&P/BVL SEL (Perú)	381.00	0.17%	-1.45%	0.64%	3.52%	85.13
▼ S&P/BVL LIMA 25	31,228.91	-0.26%	-2.82%	-1.11%	1.50%	99.03
▼ IPC (México)	49,304.94	-2.16%	-2.63%	-1.17%	-0.10%	322.42
▼ S&P MILA 40	764.39	-1.86%	-2.70%	0.14%	4.84%	327.45

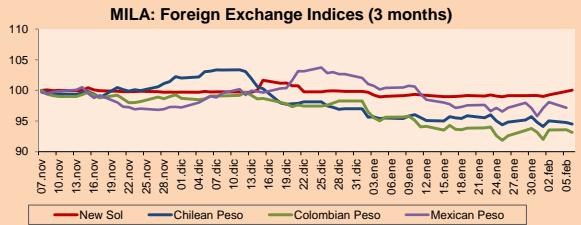
* Market Cap. Of the last price Legend: Variation 1D: 1 day, 5D: 5 days, 1M: 1 Month, YTD: Var%12/31/17 to date



Source: Bloomberg

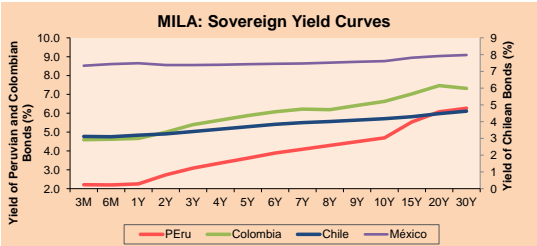
Currency	Price	1D*	5D*	30 D*	YTD*
▲ New Sol (PEN)	3,2443	0.19%	0.86%	1.01%	0.20%
▼ Chilean Peso (CLP)	599.55	-0.27%	-1.28%	-1.03%	-2.58%
▼ Colombian Peso (COP)	2,829.77	-0.46%	-0.69%	-2.61%	-5.23%
▼ Mexican Peso (MXN)	18.61	-0.94%	-0.81%	-2.98%	-5.35%

* Legend: Variation 1D: 1 day, 5D: 5 days, 1M: 1 Month, YTD: Var%12/31/17 to date



Base: 07/11/17=100 Source: Bloomberg

Instrument	Currency	Price	Bid Yield (%)	Ask Yield (%)	Duration
PERU 4.125 08/25/2027	USD	105.6	3.46	3.40	7.83
PERU 7.125 03/30/19	USD	105.615	2.23	2.03	1.08
PERU 7.35 07/21/25	USD	126.67	3.22	3.25	6.00
PERU 8.75 11/21/33	USD	154.6	4.06	4.02	9.97
PERU 6.55 03/14/37	USD	132.475	4.11	4.06	11.49
PERU 5.625 11/18/2050	USD	124.075	4.27	4.24	16.65
CHILE 2.25 10/30/22	USD	96.908	2.99	2.92	4.43
CHILE 3.875 08/05/20	USD	103.167	2.61	2.51	2.37
CHILE 3.625 10/30/2042	USD	96.217	3.88	3.85	16.07
COLOM 11.75 02/25/20	USD	117.96	2.76	2.59	1.79
COLOM 11.85 03/09/28	USD	165.871	3.92	3.86	6.76
COLOM 10.375 01/28/33	USD	158.255	4.90	4.81	9.16
COLOM 7.375 09/18/37	USD	130.568	4.94	4.91	11.34
COLOM 6.125 01/18/41	USD	117.15	4.89	4.86	13.17
MEX 4 10/02/23	USD	102.628	3.50	3.46	4.99
MEX5.55 01/45	USD	109.9	4.901	4.87	14.6



Source: Bloomberg

Equity

Largest gains	Exchange	Amt.	Price	▲%
CINTAC	Santia.	CLP	440.00	10.26
ORO BLANCO	Santia.	CLP	6.50	4.64
EDELMAG	Santia.	CLP	6800.00	4.62
CAMANCHACA	Santia.	CLP	58.89	3.28

Per Turnover	Exchange	Amount (US\$)
ECOPETROL	Colomb.	36,943,533
SQM-B	Santia.	28,637,145
CENCOSUD	Santia.	27,857,893
FALABELLA	Santia.	24,963,906
COPEC	Santia.	16,864,015

Largest losses	Exchange	Amt.	Price	▼%
QQQQ	Lima	USD	158.25	-6.99
ALICOR1	Lima	PEN	9.00	-5.46
BANMEDICA	Santia.	CLP	2000.00	-4.76
PASUR	Santia.	CLP	7651.00	-4.36

Per Volume	Exchange	Volume
VAPORES	Santia.	229,309,970
BSANTANDER	Santia.	224,481,005
ORO BLANCO	Santia.	110,192,597
CHILE	Santia.	79,357,942
NORTEGRAN	Santia.	57,548,110

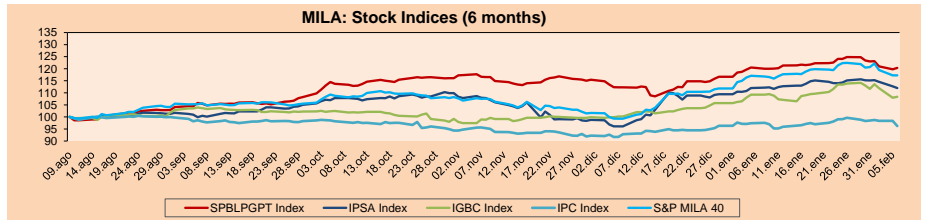
MILA

Peru: The General Index of the BVL of Peru ended today's session with a positive return of +0.74%. The index maintains a cumulative positive annual trend of +3.17% in local currency, while the yield adjusted to foreign currency is +2.96%. Then, the S&P/BVL Peru SEL obtained a positive result of +0.17%, while the S&P/BVL LIMA 25 decreased -0.26%. The spot PEN reached S./2443.

Chile: The IPSA index ended the day with a negative result of -0.60%. The sectors of the index with the most negative results were Real estate (-2.25%) and Non-basic consumer products (-1.82%). On the other hand, the values with the most bearish results were Compañía Sud Americana de Vapores SA (-3.11%) and Enel Chile SA (-2.89%).

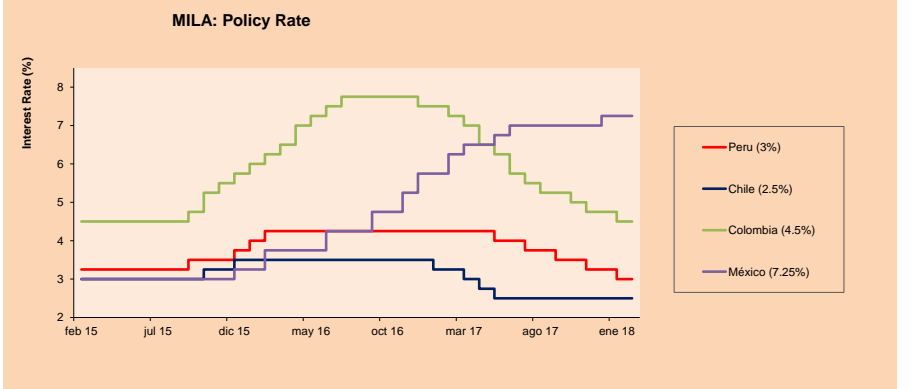
Colombia: The COLCAP index closed the session with positive results of +0.25%. The sectors with upward returns were Products of first necessity (+1.74%) and Energy (+0.49%). In addition, the stocks with the highest yields were Almacenes Exito SA (+1.95%) and Grupo Nutresa SA (+1.63%).

Mexico: Mexico's IPC index closed today's session with a negative return of -2.16%. The sectors of the index that generated the most negative returns were Industrial (-2.64%) and Products of first necessity (-2.49%). Finally, the stocks with the lowest yields were Wal-Mart de Mexico SAB de CV (-4.35%) and Grupo Carso SAB de CV (-3.81%).



Base: 10/08/17=100 Source: Bloomberg

ETFs	Curr.	Close	1D	5D	30 D	YTD	Exchange
▲ iShares MSCI All Peru Caped Index Fund	USD	41.89	0.36%	-3.48%	-1.90%	2.22%	NYSE Arca
▲ iShares MSCI Chile Capped	USD	55.03	2.48%	-0.76%	1.06%	5.50%	BATS
▲ Global X MSCI Colombia	USD	15.36	0.39%	-3.34%	2.46%	6.39%	NYSE Arca
▲ iShares MSCI Mexico Capped	USD	52.04	2.68%	-1.14%	2.08%	5.58%	NYSE Arca
▲ iShares MSCI Emerging Markets	USD	48.87	3.25%	-3.40%	-0.53%	3.71%	NYSE Arca
▲ Vanguard FTSE Emerging Markets	USD	47.87	2.48%	-3.37%	0.02%	4.27%	NYSE Arca
▲ iShares Core MSCI Emerging Markets	USD	58.86	2.92%	-3.48%	-0.68%	3.44%	NYSE Arca
▲ iShares JP Morgan Emerging Markets Bonds	USD	62.41	1.61%	-2.45%	-0.27%	2.72%	BATS
▲ Morgan Stanley Emerging Markets Domestic	USD	8.07	2.54%	-0.74%	1.64%	4.81%	New York



Source: Bloomberg

Capital Market Laboratory Coordinator: Economist Bruno Bellido Anicama

Support: Lith Fernandez Kaori Olulo, Jairo Trujillo, Mario Villar

e-mail: pulsobursatil@ulima.edu.pe

facebook: www.facebook.com/pulsobursatil.ul

Phone number : 4376767 Anexes: 35340 - 35310

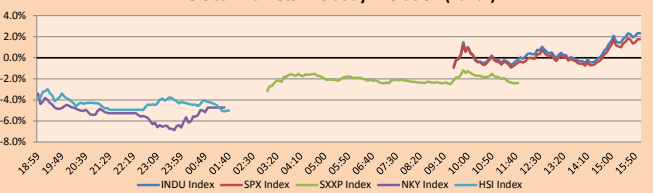
PULSO BURSÁTIL

WORLD

Main Indices	Close	1 D*	5 D*	1 M*	YTD*	Market Cap. (US\$ Mill.)
▲ Dow Jones (USA)	24,912.77	2.33%	-4.46%	-1.51%	0.78%	6,584,875
▲ Standard & Poor's 500 (USA)	2,695.14	1.74%	-4.51%	-1.75%	0.81%	23,504,956
▲ NASDAQ Composite (USA)	7,115.88	2.13%	-3.87%	-0.29%	3.08%	10,960,940
▼ Stoxx EUROPE 600 (Europe)	372.79	-2.41%	-5.89%	-6.18%	-4.21%	8,038,541
▼ DAX (Germany)	12,392.66	-2.32%	-6.10%	-6.96%	-4.06%	933,281
▼ FTSE 100 (United Kingdom)	7,141.40	-2.64%	-5.89%	-7.55%	-7.11%	1,414,435
▼ CAC 40 (France)	5,161.81	-2.35%	-5.70%	-5.65%	-2.84%	1,173,624
▼ IBEX 35 (Spain)	9,810.00	-2.53%	-5.93%	-5.78%	-2.33%	501,341
▼ MSCI AC Asia Pacific Index	179.36	-1.69%	-2.82%	0.06%	3.19%	15,342,635
▼ HANG SENG (Hong Kong)	30,595.42	-5.12%	-6.17%	-0.71%	2.26%	3,181,207
▼ SHANGHAI SE Comp. (China)	3,970.65	-3.35%	-3.36%	-0.62%	1.92%	5,402,306
▼ NIKKEI 225 (Japan)	21,810.24	-4.73%	-7.22%	-8.87%	-5.07%	3,550,533
▲ BOVESPA (Brazil)	83,894.04	2.48%	-0.70%	6.10%	9.81%	788,418
▲ Merval (Argentina)	31,624.18	1.54%	-7.64%	-1.76%	5.18%	126,599

*Legend: Variation 1D: 1 Day; 5D: 5 Days; 1M: 1 Month; YTD: Var. % 12/31/17 to date

Global Markets: Intraday Evolution (var %)

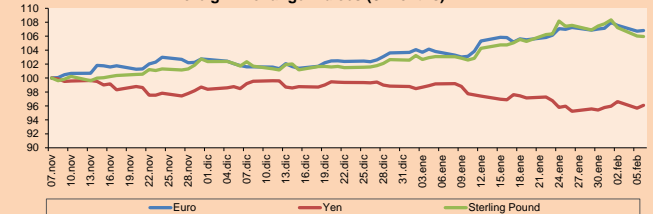


Source: Bloomberg

Currency	Price	1 D*	5 D*	1 M*	YTD*
▲ Euro	1.2377	0.08%	-0.20%	2.89%	3.10%
▲ Yen	109.5600	0.43%	0.72%	-3.09%	-2.78%
▲ Sterling Pound	1.3949	-0.079%	-1.40%	2.79%	3.23%
▼ Yuan	6.2907	-0.03%	-0.52%	-3.05%	-3.32%
▼ Hong Kong Dollar	7.8185	-0.03%	-0.03%	-0.01%	0.06%
▼ Brazilian Real	3.2349	-0.57%	1.69%	0.17%	-2.34%
▲ Argentine Peso	19.5765	0.57%	-0.28%	3.67%	5.12%

*Legend: Variation 1D: 1 Day; 5D: 5 Days; 1M: 1 Month; YTD: Var. % 12/31/17 to date

Foreign Exchange Indices (3 months)

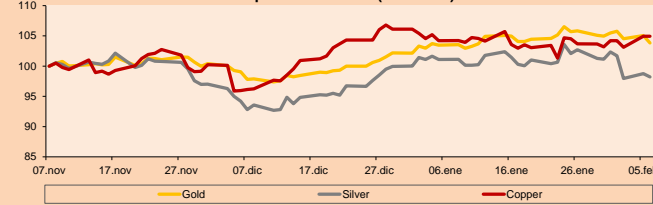


Base: 07/11/17=100
Source: Bloomberg

Commodities	Close	1 D*	5 D*	1 M*	YTD*
▼ Oro (US\$ Oz. T) (LME)	1,324.10	-1.16%	-1.08%	0.36%	1.62%
▼ Plata (US\$ Oz. T) (LME)	16.64	-0.56%	-2.91%	-2.86%	-1.75%
- Cobre (US\$ TM) (LME)	7,128.75	0.00%	1.70%	0.71%	-1.09%
- Zinc (US\$ TM) (LME)	3,595.75	0.00%	1.40%	6.38%	7.74%
▼ Petróleo WTI (US\$ Barril) (NYM)	63.92	-0.36%	-0.90%	4.09%	5.76%
- Estafío (US\$ TM) (LME)	22,070.00	0.00%	1.29%	10.27%	9.82%
- Plomo (US\$ TM) (LME)	2,660.75	0.00%	2.79%	4.48%	7.08%
- Molibdeno (US\$ TM) (LME)	15,634.00	0.00%	0.01%	-0.03%	-0.03%
▼ Azúcar #11 (US\$ Libra) (NYB-ICE)	13.84	-0.43%	0.87%	-8.22%	-8.71%
▼ Cacao (US\$ TM) (NYB-ICE)	2,065.00	-0.43%	3.56%	8.80%	9.09%
▲ Café Arábica (US\$ TM) (NYB-ICE)	122.85	2.55%	0.45%	-4.36%	-2.65%

*Legend: Variación 1D: 1 Día; 5D: 5 Días; 1M: 1 Mes; YTD: Var. % 31/12/17 a la fecha

Principal Metals Index (3 months)



Base: 07/11/17=100
Source: Bloomberg

Equity

Wall Street (Stocks from S&P 500)

Largest gains	Curr.	Price	▲ %	Exchange	Largest losses	Curr.	Price	▼ %	Exchange
MU UW	USD	43.88	11.37	NASDAQ GS	ARNC UN	USD	25.28	-4.68	New York
SWKS UW	USD	104.56	10.44	NASDAQ GS	IT UN	USD	124.02	-3.30	New York
NWL UN	USD	28.75	10.07	New York	DISH UW	USD	43.32	-3.15	NASDAQ GS
TPR UN	USD	49.02	9.01	New York	NEE UN	USD	149.56	-3.07	New York

Europe (Stocks from STOXX EUROPE 600)

Largest gains	Curr.	Price	▲ %	Exchange	Largest losses	Curr.	Price	▼ %	Exchange
AMS SE	CHF	98.6	13.15	SIX Swiss Ex	CSGN SE	CHF	16.74	-6.01	SIX Swiss Ex
INVP LN	Gbp	558.8	3.79	Londres	GXI GY	EUR	64.55	-5.35	Xetra
AIBX ID	EUR	5.48	3.59	Dublin	MUV2 GY	EUR	180.35	-5.33	Xetra
PNDORA DC	DKK	582.6	3.48	Copenhagen	SLA LN	Gbp	396	-5.10	Londres

Global Overview

United States:

The US stock market ended the day with positive results, driven by the technology, consumer and materials sector, after a tumultuous morning that saw the Dow balance more than 900 points in 25 minutes. In general, what began with the increase in bond yields became liquidation in the stock markets at the end of last week, as investors feared the return of inflation and higher rates that could erode the profitability of companies that are already quoted at high valuations. On the other hand, Treasury Secretary Steven Mnuchin said the government's spending plan is not contributing to market volatility. In addition, the Treasury Department said last week that the United States would increase sales of bonds and bonds for the first time since 2009 this year to fund growing budget deficits, driven in part by the tax reform that President Donald Trump signed at the end of the year. From last year. In summary, the fall in stocks is attributed to a series of causes such as signs of faster inflation, aggressive central banks and higher bond yields.

Europe:

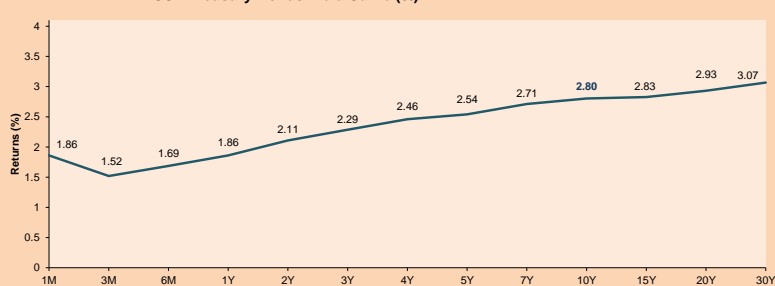
It is the seventh consecutive session in which the European market closes in negative among its main indices. The European index Stoxx Europe 600, SXPP fell -2.41%, being the lowest fall since August last year. The English FTSE 100 index was strongly affected, decreasing by -2.64%, being the strongest drop in almost 10 months, this was mainly due to the fall of the US market that scared investors and causing them to withdraw their capital. On the other hand, the German index DAX 30, fell -2.32% and the French CAC 40, -2.35%. This negative effect on world markets could be explained, according to some analysts, as an expected effect after reaching historical highs, as well as expectations and fear of the rise of the FED rate. As for the Euro, it had an appreciation against the dollar in the last hour of yesterday in New York, going from \$ 1.2368 to \$ 1.2405. With respect to securities, shares of oil company BP PLC fell by -1.46%, after reporting its first quarterly loss since 2016. London investment firms were those that fell the most, for example Standard Life Aberdeen PLC. It fell -5.10% and Schroders PLC that fell -5.06%.

Asia:

The Asian stock market closed with negative results among its main indices. The Japanese benchmark index "Nikkei 225" had the biggest drop since Brexit in June 2016, closing the day with a drop of -4.7% approximately. Asian stocks fell for the second day in a row due to large sales in the United States and Europe, analysts explain that this is due to a good start to the year in bond yields, due to the prospects of an increase in interest rates, faster than expected in the United States and the latest depressing quarterly reports from some companies. In addition, the Nikkei volatility index jumped 52% to 31.02 points and reached its highest point since June 2016 with 35.34 points, which shows that the movements of the markets are very volatile. For this reason, the Bank of Japan bought 672 million dollars in ETFs on Monday afternoon to help market performance. On the other hand, the Taiwanese reference index "Taiex Y9999" fell -4.9%, being its biggest loss in 6 years and 6 months. Regarding Hong Kong, the benchmark index "Hang Seng" fell by close to -4.5%. In the same way, the composite index of Shanghai closed with a fall of -3.5%.

ETFs	Curr.	Close	1D	5D	30 D	YTD	Exchange
SPDR S&P 500 ETF TRUST	USD	269.13	1.97%	-4.48%	-1.57%	0.85%	NYSE Arca
ISHARES MSCI EMERGING MARKET	USD	48.87	3.25%	-3.40%	-0.53%	3.71%	NYSE Arca
ISHARES IBOXX USD HIGH YIELD	USD	86.26	0.61%	-1.02%	-1.94%	-1.15%	NYSE Arca
FINANCIAL SELECT SECTOR SPDR	USD	28.39	1.83%	-4.28%	-0.07%	1.72%	NYSE Arca
VANECK VECTORS GOLD MINERS E	USD	22.11	-2.64%	-5.71%	-6.59%	-4.86%	NYSE Arca
ISHARES RUSSELL 2000 ETF	USD	149.69	1.20%	-4.77%	-3.29%	-1.82%	NYSE Arca
SPDR GOLD SHARES	USD	125.38	-1.05%	-1.12%	0.04%	1.40%	NYSE Arca
ISHARES 20+ YEAR TREASURY BO	USD	119.96	-0.62%	-1.68%	-4.57%	-5.44%	NASDAQ GM
POWERSHARES QQQ TRUST SERIES	USD	162.31	2.65%	-3.79%	0.24%	4.21%	NASDAQ GM
ISHARES NASDAQ BIOTECHNOLOGY	USD	109.36	2.03%	-5.94%	-0.43%	2.43%	NASDAQ GM
ENERGY SELECT SECTOR SPDR	USD	69.97	0.79%	-6.46%	-6.67%	-3.17%	NYSE Arca
PROSHARES ULTRA VIX ST FUTUR	USD	15.22	-33.45%	26.52%	69.30%	49.07%	NYSE Arca
UNITED STATES OIL FUND LP	USD	12.70	-0.55%	-1.55%	3.17%	5.75%	NYSE Arca
ISHARES MSCI BRAZIL	USD	45.12	3.82%	-2.57%	5.32%	11.55%	NYSE Arca
SPDR S&P OIL & GAS EXP & PR	USD	34.82	1.31%	-5.82%	-9.65%	-6.35%	NYSE Arca
UTILITIES SELECT SECTOR SPDR	USD	48.33	-1.49%	-4.26%	-5.84%	-8.26%	NYSE Arca
ISHARES US REAL ESTATE ETF	USD	74.26	0.35%	-3.98%	-6.34%	-8.33%	NYSE Arca
SPDR S&P BIOTECH ETF	USD	91.05	3.07%	-4.19%	4.61%	7.28%	NYSE Arca
ISHARES IBOXX INVESTMENT GRA	USD	118.44	-0.20%	-1.15%	-2.03%	-2.57%	NYSE Arca
ISHARES JP MORGAN USD EMERGI	USD	113.67	0.19%	-1.32%	-2.61%	-2.09%	NASDAQ GM
REAL ESTATE SELECT SECT SPDR	USD	30.49	-0.20%	-3.70%	-5.52%	-7.44%	NYSE Arca
ISHARES CHINA LARGE-CAP ETF	USD	50.77	1.78%	-2.33%	4.59%	9.96%	NYSE Arca
CONSUMER STAPLES SPDR	USD	55.02	1.10%	-5.28%	-3.35%	-3.29%	NYSE Arca
VANECK VECTORS JUNIOR GOLD M	USD	31.51	-2.69%	-4.86%	-8.61%	-7.68%	NYSE Arca
SPDR BBG BARG HIGH YIELD BND	USD	36.23	0.53%	-1.12%	-2.16%	-1.33%	NYSE Arca
VANGUARD REAL ESTATE ETF	USD	74.80	0.01%	-4.16%	-7.71%	-9.86%	NYSE Arca

USA Treasury Bonds Yield Curve (%)



Source: Bloomberg

Capital Market Laboratory Coordinator: Economist Bruno Bellido Anicama
Support: Lith Fernandez Kaori Olulo, Jairo Trujillo, Mario Villar
e-mail: pulsohorsatil@ulima.edu.pe
facebook: www.facebook.com/pulsohorsatil
Phone number : 4376767 Anexes: 35340 - 35310

PULSO BURSÁTIL

LIMA

Stocks

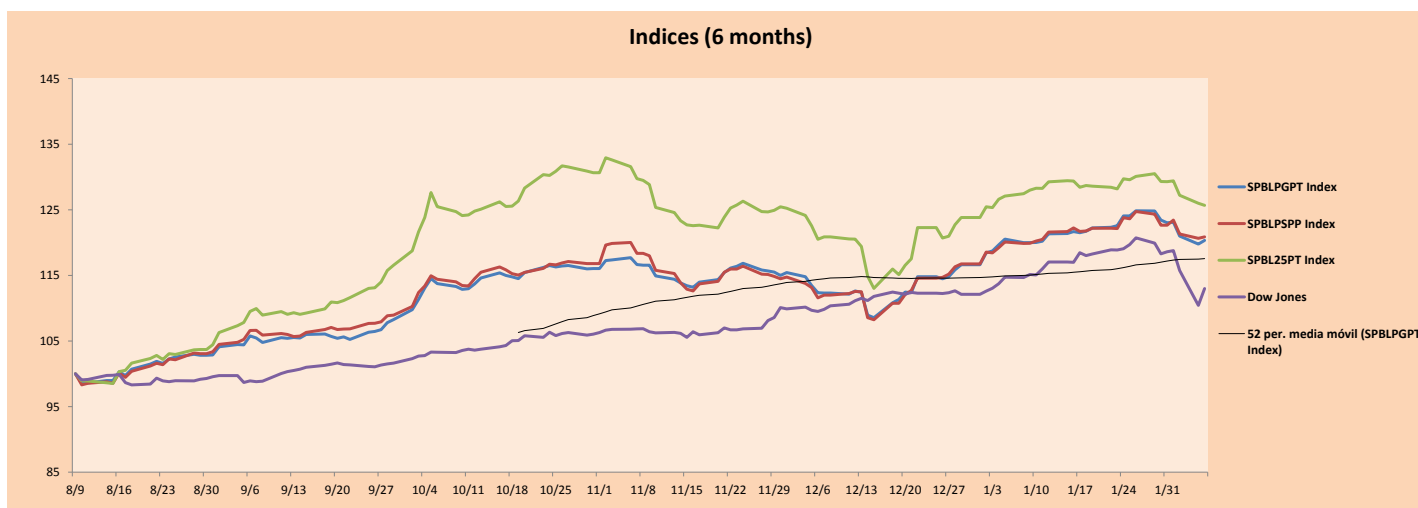
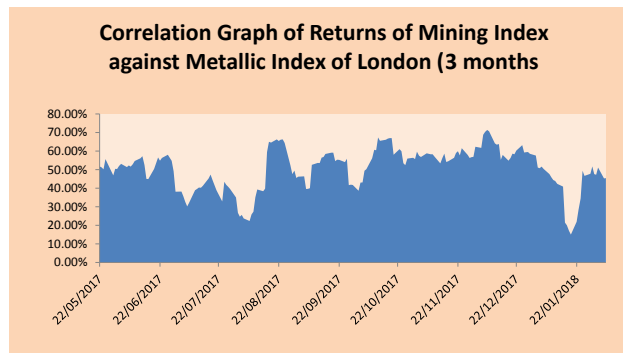
Ticker	Currency	Price	1D*	5D*	30D*	YTD*	Frequency	Volume (US\$)	Beta	Dividend Yield (%)	Price Earning	Market Cap. (M US\$)	Economic Sector*	Index Weight
▼ ALICORC1 PE**	S/.	11.15	-0.45%	-3.04%	0.00%	5.19%	100.00%	793,220	0.94	1.26	23.39	2,932.12	Industrial	3.53%
▼ ATACOCB1 PE**	S/.	0.67	0.00%	-5.63%	-4.29%	-1.47%	100.00%	100,543	2.34	0.00	-	215.99	Mining	1.02%
▲ BACKUS11 PE**	S/.	18.60	0.49%	0.54%	1.64%	1.03%	75.00%	9,549	0.43	5.60	5.40	8,938.09	Industrial	0.82%
▲ BAP PE**	US\$	222.02	2.08%	-5.92%	-0.44%	6.74%	100.00%	189,677	1.03	3.87	-	17,643.22	Diverse	5.82%
▼ BVN PE**	US\$	14.89	-2.36%	-2.68%	0.13%	5.45%	100.00%	696,798	1.22	0.56	-	4,098.24	Mining	5.88%
▼ CASAGRC1 PE**	S/.	6.00	0.17%	0.00%	-1.64%	-3.07%	100.00%	9,228	0.71	6.73	16.02	155.78	Agricultural	1.31%
▲ CONTINC1 PE**	S/.	4.35	2.35%	0.93%	-0.68%	4.82%	90.00%	22,228	0.80	3.40	15.99	6,547.35	Finance	2.85%
▼ CORARE11 PE**	S/.	0.72	-1.37%	-4.00%	-1.37%	0.00%	100.00%	86,829	1.50	5.19	9.62	305.88	Industrial	1.72%
▼ CPACASC1 PE**	S/.	8.00	-3.03%	-2.44%	-1.23%	-1.84%	100.00%	3,475,187	0.63	4.38	30.25	1,053.82	Industrial	2.38%
▼ CVERDEC1 PE**	US\$	28.85	-0.52%	-3.83%	-6.33%	-2.86%	100.00%	164,181	1.30	0.00	40.86	10,099.12	Mining	5.25%
- ENGEPEC1 PE**	S/.	1.85	0.00%	-1.60%	-7.50%	-6.57%	80.00%	83,734	0.96	3.45	17.73	1,649.76	Public Services	1.44%
▲ ENDISPC1**	S/.	5.70	1.79%	-0.87%	1.06%	1.06%	95.00%	26,565	1.00	3.34	12.31	1,121.91	Public Services	0.98%
▼ FERREYC1 PE**	S/.	2.55	-1.54%	-1.54%	-1.54%	0.00%	100.00%	1,496,935	1.14	5.04	9.14	797.25	Diverse	4.90%
- GRAMONC1 PE**	S/.	1.90	0.00%	4.97%	2.70%	1.60%	100.00%	1,907,612	1.48	0.00	11.50	386.56	Diverse	4.05%
▼ IFS PE**	US\$	40.80	-0.49%	0.67%	4.62%	5.97%	100.00%	1,020,000	0.57	3.19	14.53	4,614.92	Diverse	7.22%
▼ INRETC1 PE**	US\$	21.21	-2.71%	-1.35%	1.97%	1.00%	95.00%	1,027,563	1.00	0.92	25.78	2,180.54	Diverse	5.28%
▼ LUSURC1 PE**	S/.	12.01	-1.15%	-0.83%	-0.17%	-0.33%	90.00%	23,829	0.48	5.16	14.07	1,802.63	Public Services	1.81%
▲ MILPOC1 PE**	S/.	5.20	1.96%	-5.45%	7.00%	13.04%	100.00%	210,975	1.23	16.48	11.66	2,123.21	Mining	1.56%
▼ MINSUR11 PE**	S/.	1.78	-2.73%	-3.78%	-8.72%	-1.11%	90.00%	59,873	1.67	3.87	12.35	1,581.77	Mining	3.09%
▼ PML PE**	US\$	0.29	-1.69%	-3.33%	-9.94%	-9.38%	100.00%	24,529	1.41	0.00	-	75.57	Mining	2.12%
- RELAPAC1 PE**	S/.	0.34	0.00%	-5.56%	0.00%	9.66%	100.00%	83,708	1.45	0.00	5.19	370.45	Industrial	2.12%
▲ SCOO PE**	US\$	48.07	1.69%	-0.56%	-2.32%	1.07%	90.00%	433,237	1.23	1.23	25.17	37,158.11	Mining	2.14%
- SIDERC1 PE**	S/.	0.49	0.00%	0.82%	-1.21%	1.88%	75.00%	6,074	1.74	0.00	4.46	185.08	Industrial	1.43%
▼ TV PE**	US\$	1.24	-0.80%	-6.06%	-1.59%	3.33%	100.00%	184,578	1.58	0.00	-	1,023.90	Mining	2.93%
▼ UNACEMC1 PE**	S/.	2.95	-1.67%	-1.67%	0.34%	-1.67%	95.00%	322,053	0.71	1.76	31.66	1,497.14	Industrial	3.00%
▲ VOLCABC1 PE**	S/.	1.27	0.79%	-7.30%	-6.62%	-3.79%	100.00%	1,046,670	1.77	2.04	16.32	3,070.97	Mining	5.90%

Quantity of shares: 26
 Source: Bloomberg, Económica
 * Bloomberg Industry Classification System
 ** PER is used in the stock market and original currency of the instrument
 *Legend: Variation 1D: 1 Day; 5D: 5 Days; 1M: 1 Month; YTD: Var.% 12/31/17 to date

Sectorial Indices

	Close	1D*	5D*	30D*	YTD*	Beta
▲ Mining Index	363.39	0.28%	-1.90%	-1.13%	2.23%	1.15
▼ Consumer Index	933.98	-0.80%	-1.80%	1.10%	3.59%	0.61
▼ Industrial Index	236.32	-1.57%	-1.42%	-0.05%	0.15%	1.07
▲ Banking and Financial Index	1,139.43	2.31%	-4.41%	0.80%	6.57%	1.09
▼ Construction Index	264.52	-1.68%	-1.18%	0.70%	-0.23%	0.95
▲ Services Index	408.71	0.06%	-0.53%	-2.31%	-1.89%	0.51
▼ Juniors Index	40.06	-0.87%	-1.57%	-10.60%	-8.60%	1.40
▲ Electric Index	399.00	0.06%	-0.53%	-2.31%	-1.89%	0.51

*Legend: Variation 1D: 1 Day; 5D: 5 Days; 1M: 1 Month; YTD: Var.% 12/31/17 to date



Source: Bloomberg

Capital Market Laboratory Coordinator: Economist Bruno Bellido Anicama
 Support: Lith Fernandez Kaori Olulou, Jairo Trujillo, Mario Villar
 e-mail: pulsobursatil@ulima.edu.pe
 facebook: www.facebook.com/pulsobursatil.ul
 Phone number : 4376767 Anexes: 35340 - 35310

PULSO BURSÁTIL

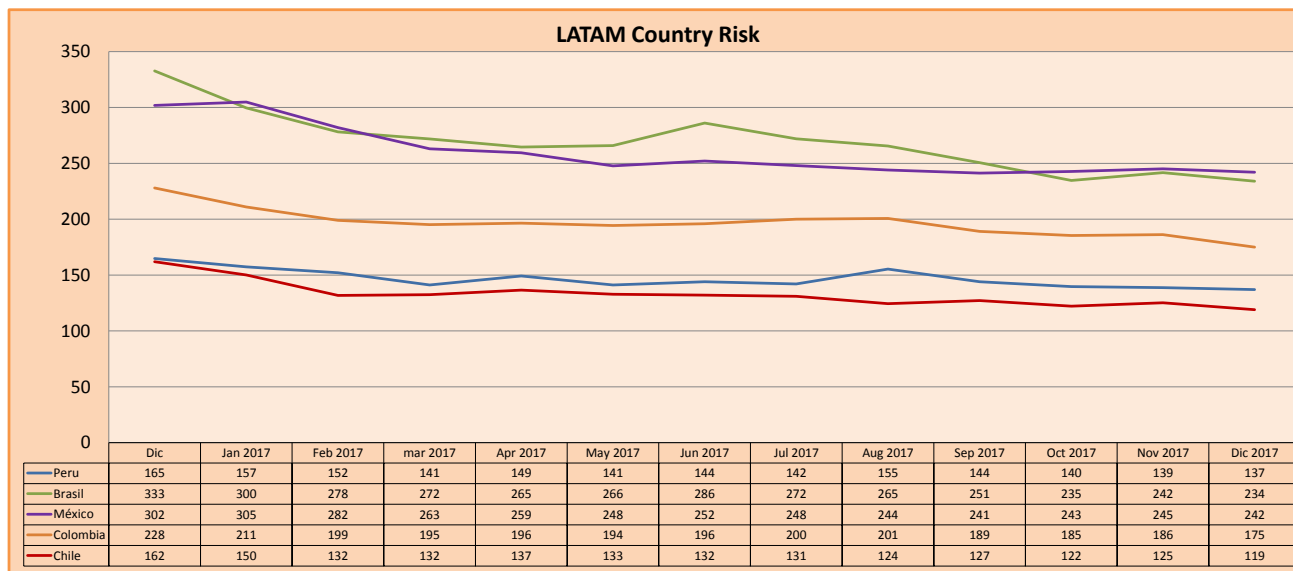
SOVEREIGN RATING

RISK RATINGS			
Moody's	S&P	Fitch	
Aaa	AAA	AAA	Prime
Aa1	AA+	AA+	High credit quality
Aa2	AA	AA	
Aa3	AA-	AA-	
A1	A+	A+	Medium-high grade, with low credit risk
A2	A	A	
A3	A-	A-	
Baa1	BBB+	BBB+	Moderate Credit Risk
Baa2	BBB	BBB	
Baa3	BBB-	BBB-	
Ba1	BB+	BB+	It has speculative elements and it is subject to substantial credit risk
Ba2	BB	BB	
Ba3	BB-	BB-	
B1	B+	B+	It is considered speculative and it has high credit risk
B2	B	B	
B3	B-	B-	
Caa1	CCC+		Bad credit conditions and it is subject to high credit risk
Caa2	CCC		
Caa3	CCC-	CCC	
Ca	CC		Very close to default or in default
	C		
C	D	DDD	

Source: Bloomberg

Latin America Credit Rating			
Clasificadora de riesgo			
Country	Moody's	Fitch	S&P
Peru	A3	BBB+	BBB+
Mexico	A3	BBB+	BBB+
Venezuela	Caa3	RD	SD
Brazil	Ba2	BB	BB-
Colombia	Baa2	BBB	BBB-
Chile	Aa3	A	A+
Argentine	B2	B	B+
Panama	Baa2	BBB	BBB

Source: Bloomberg



Source: Bloomberg

Capital Market Laboratory Coordinator: Economist Bruno Bellido Anicama
 Support: Lith Fernandez Kaori Olulo, Jairo Trujillo, Mario Villar
 e-mail: pulsobursatil@ulima.edu.pe
 facebook: www.facebook.com/pulsobursatil.ul
 Phone number : 4376767 Anexxes: 35340 - 35310

The content of this document is just for informational purposes . The information and opinions expressed should not be consider as recommendations for future decisions . Under any circumstances, the Capital Market Laboratory of University of Lima will be responsible for the use of the statements in this document.