



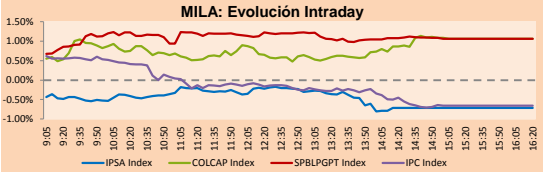
# PULSO BURSÁTIL

Lima, April 2, 2018

## MILA

Main Indices	Close	1 D	5 D	1 M	YTD	Market Cap. (US\$ bill)
▼ IPSA (Chile)	5,502.60	-0.71%	0.23%	-0.77%	-1.11%	213.63
▼ IGPA (Chile)	27,569.52	-0.60%	0.14%	-0.83%	-1.47%	260.45
▲ IGBC (Colombia)	11,466.49	1.29%	0.23%	1.76%	-0.10%	114.36
▲ COLCAP (Colombia)	1,470.88	1.06%	0.17%	1.00%	-2.83%	113.87
▲ S&P/BVL (Perú)*	20,775.67	1.05%	0.52%	-0.27%	4.01%	113.26
▲ S&P/BVL SEL (Perú)	388.74	1.03%	0.73%	0.46%	5.63%	99.43
▼ S&P/BVL LIMA 25	30,662.23	-0.21%	-0.60%	-1.39%	-0.34%	105.36
▼ IPC (México)	45,826.64	-0.65%	-3.24%	-3.62%	-7.15%	310.64
▲ S&P MILA 40	755.37	0.73%	0.99%	0.68%	3.61%	322.73

\* Market Cap. Of the last price Legend: Variation 1D: 1 day; 5D: 5 days; 1M: 1 Month; YTD: Var%12/31/17 to date

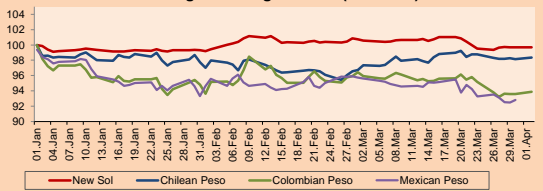


Source: Bloomberg

Currency	Price	1D*	5D*	30 D*	YTD*
▼ New Sol (PEN)	3,227.3	-0.01%	0.34%	-0.88%	-0.32%
▲ Chilean Peso (CLP)	605.36	0.24%	0.06%	1.03%	-1.64%
▲ Colombian Peso (COP)	2,802.91	0.32%	0.08%	-2.14%	-6.12%
▲ Mexican Peso (MXN)	18.25	0.36%	-0.50%	-3.06%	-7.19%

\*Legend: Variation 1D: 1 day; 5D: 5 days; 1M: 1 Month; YTD: Var%12/31/17 to date

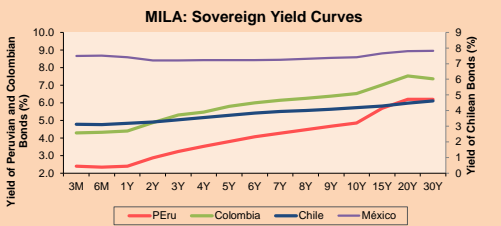
### MILA: Foreign Exchange Indices (3 months)



Base: 01/01/18=100  
Source: Bloomberg

### Fixed Income

Instrument	Currency	Price	Bid Yield (%)	Ask Yield (%)	Duration
PERU 4.125 08/25/2027	USD	104.9	3.53	3.49	7.80
PERU 7.125 03/30/19	USD	104.68	2.45	2.18	0.96
PERU 7.35 07/21/25	USD	124.678	3.52	3.46	5.82
PERU 8.75 11/21/33	USD	150.073	4.33	4.29	9.71
PERU 6.55 03/14/37	USD	128.503	4.35	4.31	11.49
PERU 5.625 11/19/2050	USD	120.887	4.42	4.40	16.24
CHILE 2.25 10/30/22	USD	96.077	3.22	3.14	4.27
CHILE 3.875 08/05/20	USD	102.277	2.92	2.80	2.22
CHILE 3.625 10/30/2042	USD	96.607	3.85	3.83	15.86
COLOM 11.75 02/25/20	USD	116.253	2.95	2.77	1.73
COLOM 11.85 03/09/28	USD	164.106	4.00	3.95	6.83
COLOM 10.375 01/28/33	USD	159.003	4.81	4.74	9.02
COLOM 7.375 09/18/37	USD	129.365	5.02	4.98	11.44
COLOM 6.125 01/18/41	USD	114.935	5.03	5.01	12.91
MEX 4 10/02/23	USD	102.557	3.51	3.46	4.93
MEX5.55 01/45	USD	108.285	5.001	4.971	14.35



Source: Bloomberg

Equity	Exchange	Amt.	Price	▲ %
<b>Largest gains</b>				
BVN	Lima	USD	15.56	6.14
BUENAVC1	Lima	PEN	49.80	5.93
TV	Lima	USD	0.98	3.16
SCCO	Lima	USD	54.00	3.15

Largest losses	Exchange	Amt.	Price	▼ %
QQQQ	Lima	USD	154.90	-7.96
BROCALC1	Lima	PEN	11.20	-5.08
COLO COLO	Santia.	CLP	170.00	-5.03
CONSOGRAL	Santia.	CLP	380.00	-5.00

Per Turnover	Exchange	Amount (US\$)
CENCOSUD	Santia.	19,232,705
ECOPETROL	Colomb.	16,983,717
SQM-B	Santia.	16,579,688
CHILE	Santia.	8,065,900
CAP	Santia.	7,379,890

Per Volume	Exchange	Volume
VAPORES	Santia.	104,726,780
BSANTANDER	Santia.	70,638,630
CHILE	Santia.	48,148,359
ECOPETROL	Colomb.	17,643,131
CAMANCHACA	Santia.	10,197,789

### MILA

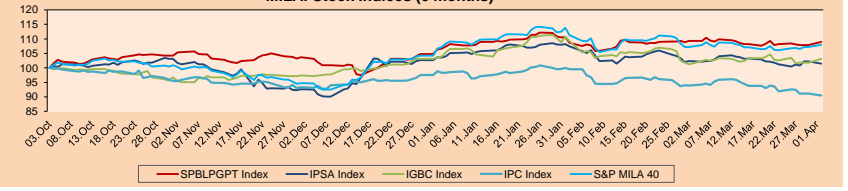
Peru: The General Index of the BVL of Peru ended today's session with a positive result of +1.05%. The index maintains an accumulated positive annual trend of +4.01% in local currency, while the adjusted return to foreign currency is +4.35%. Then, the S&P/BVL Peru SEL obtained a positive return of +1.03%, while the S&P/BVL LIMA 25 decreased -0.21%. The spot PEN reached S/3.2228.

Chile: The IPSA index ended the day with a negative result of -0.71%. The sectors of the index with the downward results were Materials (-1.36%) and Products of First Need (-1.08%). On the other hand, the values with the most negative results were Empresas La Polar SA (-4.43%) and Antarchile SA (-3.71%).

Colombia: The COLCAP index had a positive return of +1.07%. The sectors of the index with the most favorable results were Energy (+2.56%) and Finance (+1.42%). On the other hand, the shares with the highest profits were Bancolombia SA (+3.01%) and Inversiones Argos SA (+2.87%).

Mexico: Mexico's IPC index closed today's session with a negative result of -0.65%. The sectors of the index that generated the lowest results were First Necessity Products (-1.35%) and Materials (-0.67%). Finally, the stocks with the lowest yields were Grupo Lala SAB de CV (-3.84%) and Genera SAB de CV (-3.77%).

### MILA: Stock Indices (6 months)

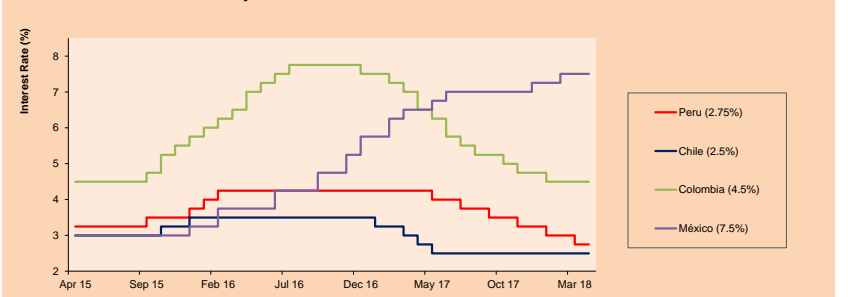


Base: 04/10/17=100  
Source: Bloomberg

### ETFs

ETFs	Curr.	Close	1D	5D	30 D	YTD	Exchange
▼ iShares MSCI All Peru Capped Index Fund	USD	42.48	-0.21%	0.71%	0.81%	3.66%	NYSE Arca
▼ iShares MSCI Chile Capped	USD	52.67	-0.66%	1.29%	-1.33%	0.98%	BATS
▼ Global X MSCI Colombia	USD	14.9	-0.40%	-0.27%	2.69%	3.21%	NYSE Arca
▼ iShares MSCI Mexico Capped	USD	50.15	-2.66%	-1.96%	0.08%	1.74%	NYSE Arca
▼ iShares MSCI Emerging Markets	USD	47.41	-1.80%	-2.07%	-1.50%	0.62%	NYSE Arca
▼ Vanguard FTSE Emerging Markets	USD	46.29	-1.47%	-1.64%	-2.09%	0.83%	NYSE Arca
▼ iShares Core MSCI Emerging Markets	USD	57.3	-1.88%	-2.00%	-1.44%	0.70%	NYSE Arca
▼ iShares JP Morgan Emerging Markets Bonds	USD	61.56	-1.25%	-0.87%	0.31%	1.32%	BATS
▼ Morgan Stanley Emerging Markets Domestic	USD	7.79	-0.38%	-1.89%	-1.52%	1.17%	New York

### MILA: Policy Rate



Source: Bloomberg

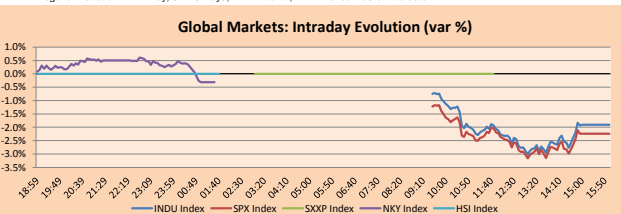
Capital Market Laboratory Coordinator: Economist Bruno Bellido Anicam  
Support: Lith Fernandez, Maria Pia Quijano, Jairo Trujillo, Mario Villar  
e-mail: pulsobursatil@ulima.edu.pe  
facebook: www.facebook.com/pulsobursatil.ul  
Phone number : 4376767 Anexx: 35340 - 35310

# PULSO BURSÁTIL

## WORLD

Main Indices	Close	1 D*	5 D*	1 M*	YTD*	Market Cap. (US\$ Mill.)
▼ Dow Jones (USA)	23,644.19	-1.90%	0.47%	-3.64%	-4.35%	6,582,938
▼ Standard & Poor's 500 (USA)	2,581.88	-2.23%	-0.25%	-4.06%	-3.43%	23,366,860
▼ NASDAQ Composite (USA)	6,870.12	-2.74%	-1.75%	-5.34%	-0.48%	11,096,700
▲ Stoxx EUROPE 600 (Europe)	370.87	0.44%	0.47%	-2.31%	-4.70%	8,095,508
▲ DAX (Germany)	12,096.73	1.31%	-0.03%	-2.73%	-6.35%	926,388
▲ FTSE 100 (United Kingdom)	7,056.61	0.17%	1.50%	-2.42%	-8.21%	1,391,754
▲ CAC 40 (France)	5,167.30	0.72%	0.00%	-2.88%	-2.73%	1,188,447
▲ IBEX 35 (Spain)	9,600.40	0.48%	1.19%	-2.44%	-4.42%	494,360
▼ MSCI AC Asia Pacific Index	172.50	-0.15%	-1.30%	-1.12%	-0.76%	14,789,809
▲ HANG SENG (Hong Kong)	30,093.38	0.24%	-3.15%	-2.44%	0.58%	3,114,570
▼ SHANGHAI SE Comp. (China)	3,163.18	-0.18%	0.94%	-2.81%	-4.38%	5,181,543
▼ NIKKEI 225 (Japan)	21,388.58	-0.31%	3.00%	0.98%	-6.05%	3,546,969
▼ BOVESPA (Brazil)	84,666.44	-0.82%	0.34%	-1.28%	10.82%	807,935
▼ MERVAL (Argentina)	31,114.93	-0.39%	-3.88%	-5.74%	3.49%	129,253

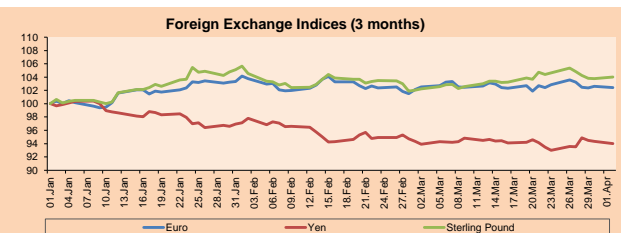
\*Legend: Variation 1D: 1 Day; 5D: 5 Days; 1M: 1 Month; YTD: Var.% 12/31/17 to date



Source: Bloomberg

Currency	Price	1 D*	5 D*	1 M*	YTD*
▼ Euro	1.2302	-0.18%	-1.14%	-0.12%	2.47%
▼ Yen	105.8900	-0.37%	0.46%	0.13%	-6.03%
▲ Sterling Pound	1.4044	0.21%	-1.30%	1.75%	3.93%
▲ Yuan	6.2804	0.08%	0.12%	-1.02%	-3.48%
▼ Hong Kong Dollar	7.8486	0.00%	0.03%	0.23%	0.44%
▼ Brazilian Real	3.3132	0.21%	-0.03%	1.84%	0.02%
- Argentine Peso	20.1402	0.00%	-0.24%	-0.71%	8.15%

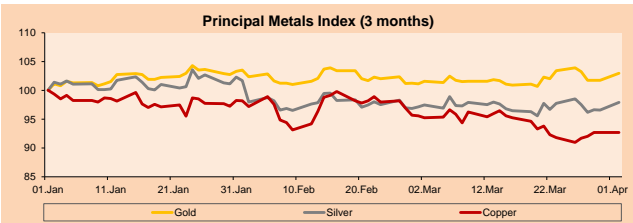
\*Legend: Variation 1D: 1 Day; 5D: 5 Days; 1M: 1 Month; YTD: Var.% 12/31/17 to date



Base: 01/01/18=100  
Source: Bloomberg

Commodities	Close	1 D*	5 D*	1 M*	YTD*
▲ Oro (US\$ Oz. T) (LME)	1,341.24	1.23%	-0.80%	1.40%	2.93%
▲ Plata (US\$ Oz. T) (LME)	16.80	1.39%	-0.62%	0.47%	-2.02%
▼ Cobre (US\$ TM) (LME)	6,679.25	0.00%	1.88%	-2.68%	-7.32%
▼ Zinc (US\$ TM) (LME)	3,284.00	0.00%	0.54%	-2.20%	-1.60%
▼ Petroleo WTI (US\$ Barril) (NYM)	63.01	-2.97%	-3.87%	3.14%	4.55%
- Estano (US\$ TM) (LME)	21,175.00	0.00%	1.22%	-1.83%	5.37%
- Plomo (US\$ TM) (LME)	2,394.50	0.00%	0.23%	-1.96%	-3.63%
- Molibdeno (US\$ TM) (LME)	24,877.00	0.00%	8.77%	59.21%	59.08%
▲ Azúcar #11 (US\$ Libra) (NYB-ICE)	12.52	1.38%	0.81%	-6.71%	-16.64%
▲ Cacao (US\$ TM) (NYB-ICE)	2,635.00	3.09%	0.23%	13.92%	39.20%
▼ Café Arábica (US\$ TM) (NYB-ICE)	116.40	-1.48%	-1.48%	-4.75%	-9.45%

\*Lenda: Variación 1D: 1 Día; 5D: 5 Días; 1M: 1 Mes; YTD: Var.% 31/12/17 a la fecha



Base: 01/01/18=100  
Source: Bloomberg

## Equity

Wall Street (Stocks from S&P 500)

Largest gains	Curr.	Price	▲%	Exchange	Largest losses	Curr.	Price	▼%	Exchange
ULTA UW	USD	203.13	-0.56	NASDAQ GS	CTXS UW	USD	91.33	-1.58	NASDAQ GS
RSG UN	USD	65.84	-0.59	New York	SCG UN	USD	38.04	1.30	New York
DISCK LW	USD	19.57	0.26	NASDAQ GS	TSCO UW	USD	60.39	-4.17	NASDAQ GS
MAA UN	USD	90.28	-1.05	New York	IFF UN	USD	134.1	-2.05	New York

Europe (Stocks from STOXX EUROPE 600)

Largest gains	Curr.	Price	▲%	Exchange	Largest losses	Curr.	Price	▼%	Exchange
VOE AV	EUR			Vienna	LUNDB SS	SEK			Stockholm
ERICB SS	SEK			Stockholm	GLE FP	EUR			EN Paris
VIS SO	EUR			Soc. Bol SIBE	GIVN SE	Requesting C	Requesting C	Requesting D	Requesting D
DIA SO	EUR			Soc. Bol SIBE	ORP FP	EUR			EN Paris

## Global Overview

### United States:

The US stock market ended today with negative results among its main indices. It highlighted the S&P 500 benchmark, falling -2.23% during the session, to close below a 200-day moving average since June 2016. On the other hand, the Nasdaq Composite index eliminated all the gains it had obtained since start of the year to fall back -2.74%. This was due to the fact that the technology and internet sector has encountered strong volatility, particularly in Amazon stocks, which fell by -5.21%. This setback occurred after the president of the United States, Donald Trump, said that the US postal service loses money every time they send Amazon packages. On the other hand, markets are still affected by trade policies, after China announced that it would apply tariffs to about 130 US products in retaliation for the steel and aluminum tariffs imposed by the Trump administration. In currency news, global reserves in dollars retreated to a minimum of 4 years in the last quarter of 2017, reaching an average of 62.7% of all reserves. However, by staying above 60% it remains the preferred currency of the world's central banks.

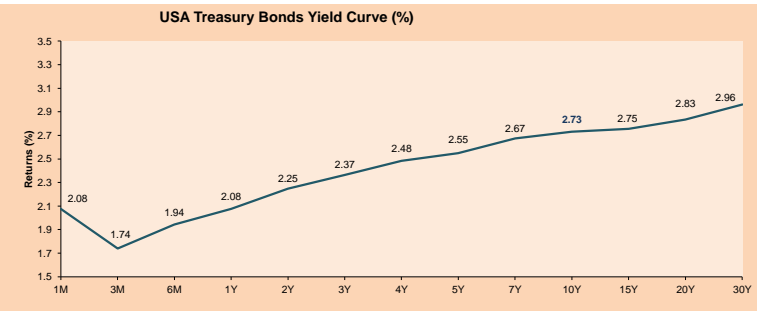
### Europe:

Closed Market.

### Asia:

The Asian stock market ended the session with mixed results among its main indices. Shares of China had strong results at the close of the day, although the Shanghai SHCOMP index fell -0.18%, the Shenzhen index increased +0.16%. On the other hand, both the Japan (Nikkei) and South Korea (SEU) indices fell -0.31% and -0.07% respectively. In China, the stock gains were driven in part by Beijing's new rules that allow technology companies to return to the mainland market. The optimistic view that drives the Chinese market occurred despite the context of trade tension with the United States, as it fulfilled the promise to retaliate against tariffs on imports of Chinese steel and aluminum by the Trump government. According to the Ministry of Finance, China imposed sanctions ranging from 25% in US pork to 15% in the case of fruit. On the manufacturing side, the Chinese data showed mixed signals about its performance, since a private indicator showed a weaker performance on Monday, while official data for the weekend indicated a maximum of three years. In other news, Tokyo stocks fell after a survey by the Bank of Japan showed signs of softening business sentiment among major Japanese manufacturers in two years. For its part, the markets in Australia, New Zealand and Hong Kong closed on Monday by holiday.

ETFs	Curr.	Close	1D	5D	30 D	YTD	Exchange
SPDR S&P 500 ETF TRUST	USD	257.47	-2.16%	-2.88%	-4.31%	-3.62%	NYSE Arca
ISHARES MSCI EMERGING MARKET	USD	47.41	-1.80%	-2.07%	-1.50%	0.62%	NYSE Arca
ISHARES IBOXX USD HIGH YIELD	USD	84.96	-0.79%	-0.60%	-0.92%	-2.64%	NYSE Arca
FINANCIAL SELECT SECTOR SPDR	USD	26.96	-2.21%	-2.64%	-5.20%	-3.40%	NYSE Arca
VANECK VECTORS GOLD MINERS E	USD	22.23	1.14%	-0.94%	3.44%	-4.35%	NYSE Arca
ISHARES RUSSELL 2000 ETF	USD	148.13	-2.44%	-3.39%	-2.77%	-2.84%	NYSE Arca
SPDR GOLD SHARES	USD	127.26	1.17%	-0.80%	1.49%	2.92%	NYSE Arca
ISHARES 20+ YEAR TREASURY BO	USD	121.88	-0.02%	1.81%	2.98%	-3.93%	NASDAQ GM
POWERSHARES QQQ TRUST SERIES	USD	155.51	-2.89%	-5.41%	-6.31%	-0.16%	NASDAQ GM
ISHARES NASDAQ BIOTECHNOLOGY	USD	102.52	-3.95%	-5.17%	-6.50%	-3.98%	NASDAQ GM
ENERGY SELECT SECTOR SPDR	USD	66.06	-2.00%	-2.81%	-1.33%	-8.59%	NYSE Arca
PROSHARES ULTRA VIX ST FUTUR	USD	21.18	14.30%	17.86%	19.32%	107.44%	NYSE Arca
UNITED STATES OIL FUND LP	USD	12.74	-2.67%	-3.56%	2.99%	6.08%	NYSE Arca
ISHARES MSCI BRAZIL ETF	USD	44.17	-1.58%	-0.81%	-3.14%	9.20%	NYSE Arca
SPDR S&P OIL & GAS EXP & PR	USD	34.03	-3.38%	-3.73%	-0.32%	-8.47%	NYSE Arca
UTILITIES SELECT SECTOR SPDR	USD	50.14	-0.77%	1.15%	2.45%	-4.82%	NYSE Arca
ISHARES US REAL ESTATE ETF	USD	74.43	-1.38%	0.83%	2.00%	-8.12%	NYSE Arca
SPDR S&P BIOTECH ETF	USD	83.85	-4.42%	-7.91%	-8.82%	-1.20%	NYSE Arca
ISHARES IBOXX INVESTMENT GRA	USD	116.99	-0.34%	0.74%	0.64%	-3.76%	NYSE Arca
ISHARES JPM MORGAN USD EMERGI	USD	112.23	-0.52%	0.42%	0.05%	-3.33%	NASDAQ GM
REAL ESTATE SELECT SECT SPDR	USD	30.70	-1.22%	0.72%	2.81%	-6.80%	NYSE Arca
ISHARES CHINA LARGE-CAP ETF	USD	46.21	-2.18%	-3.20%	-2.22%	0.09%	NYSE Arca
CONSUMER STAPLES SPDR	USD	51.34	-2.45%	-0.48%	-4.47%	-9.76%	NYSE Arca
VANECK VECTORS JUNIOR GOLD M	USD	32.48	1.03%	-1.46%	2.36%	-4.83%	NYSE Arca
SPDR BBG BARC HIGH YIELD BND	USD	35.61	-0.67%	-0.64%	-1.08%	-3.02%	NYSE Arca
VANGUARD REAL ESTATE ETF	USD	74.45	-1.35%	1.39%	1.44%	-10.28%	NYSE Arca



Source: Bloomberg

Capital Market Laboratory Coordinator: Economist Bruno Bellido Anicama  
Support: Lith Fernandez, Maria Pia Quijano, Jairo Trujillo, Mario Villar  
e-mail: pulsobursatil@ulima.edu.pe  
facebook: www.facebook.com/pulsobursatil  
Phone number : 4376767 Anexos: 35340 - 35310

# PULSO BURSÁTIL

## LIMA

### Stocks

Ticker	Currency	Price	1D*	5D*	30D*	YTD*	Frequency	Volume (US\$)	Beta	Dividend Yield (%)	Price Earning	Market Cap. (M US\$)	Economic Sector*	Index Weight
▼ ALICORC1 PE**	S/.	11.15	-0.89%	-1.59%	0.90%	5.19%	105.56%	564,959	0.90	1.26	21.01	2,952.49	Industrial	3.53%
▼ ATACOCB1 PE**	S/.	0.57	-5.00%	-8.06%	-14.93%	-16.18%	100.00%	85,409	1.97	0.00	-	166.87	Mining	1.02%
▼ BACKUSH1 PE**	S/.	19.68	-1.11%	-1.11%	-1.60%	6.90%	55.56%	6,616	0.37	5.17	4.81	8,240.43	Industrial	0.82%
▲ BAP PE**	US\$	228.03	1.50%	1.98%	4.98%	9.63%	100.00%	3,181,687	1.03	3.76	-	18,120.81	Diverse	5.82%
▲ BVN PE**	US\$	15.56	6.14%	4.01%	-2.45%	10.20%	94.44%	1,195,205	1.41	0.54	-	4,282.33	Mining	5.88%
▼ CASAGRC1 PE**	S/.	5.45	-2.68%	-0.91%	-4.22%	-11.95%	94.44%	18,058	0.74	7.41	14.56	142.25	Agricultural	1.31%
▲ CONTINC1 PE**	S/.	4.40	1.15%	3.53%	1.15%	6.02%	94.44%	96,946	0.68	3.36	15.84	6,657.49	Finance	2.85%
▼ CORAREH1 PE**	S/.	0.74	-1.33%	-3.90%	-1.33%	2.78%	100.00%	42,465	1.38	5.05	9.89	302.90	Industrial	1.72%
▲ CPACASC1 PE**	S/.	8.10	0.62%	-0.61%	2.53%	-0.61%	94.44%	18,622	0.61	4.32	38.22	1,072.57	Industrial	2.38%
▼ CVERDEC1 PE**	US\$	29.00	-3.33%	-1.02%	0.00%	-2.36%	105.56%	13,340	1.27	0.00	41.07	10,151.62	Mining	5.25%
- ENDEPEC1 PE**	S/.	1.95	0.00%	-2.50%	-0.51%	-1.52%	72.22%	676,249	0.87	0.00	12.83	1,748.09	Public Services	1.44%
▼ ENDISPC1**	S/.	5.70	-0.87%	-0.87%	0.00%	1.06%	55.56%	1,858	0.93	3.34	12.31	1,127.82	Public Services	0.98%
▼ FERREYC1 PE**	S/.	2.53	-0.39%	-0.78%	0.40%	-0.78%	100.00%	473,122	1.16	5.08	9.07	795.17	Diverse	4.90%
▼ GRAMONC1 PE**	S/.	1.90	-0.52%	15.15%	20.25%	1.60%	94.44%	125,532	1.10	0.00	11.50	388.59	Diverse	4.05%
- IFS PE**	US\$	40.50	0.00%	0.00%	-2.64%	5.19%	94.44%	1,664,105	0.59	3.21	16.81	4,580.99	Diverse	7.22%
- INRETC1 PE**	US\$	22.25	0.00%	-1.55%	2.30%	5.95%	100.00%	1,947,116	1.00	0.87	25.51	2,287.46	Diverse	5.28%
▼ LUSURC1 PE**	S/.	11.82	-0.25%	-0.76%	-2.07%	-1.91%	100.00%	3,231	0.46	5.25	13.85	1,783.46	Public Services	1.81%
- MILPOC1 PE**	S/.	5.20	0.00%	1.56%	-1.14%	13.04%	88.89%	4,834	1.40	16.48	9.21	2,131.08	Mining	1.56%
▼ MINSURH1 PE**	S/.	1.68	-2.89%	-2.89%	-4.00%	-6.67%	50.00%	8,713	1.58	4.10	23.58	1,500.77	Mining	3.09%
▼ PML PE**	US\$	0.24	-4.08%	-6.37%	-7.84%	-26.56%	94.44%	88,611	1.50	0.00	-	61.24	Mining	2.12%
▼ RELAPAC1 PE**	S/.	0.28	-0.35%	-9.27%	-11.25%	-8.39%	100.00%	97,837	1.65	0.00	3.92	311.07	Industrial	2.12%
▲ SCCO PE**	US\$	54.00	3.15%	0.07%	2.27%	13.54%	88.89%	3,024	1.50	27.48	27.48	41,743.54	Mining	2.14%
- SIDERC1 PE**	S/.	0.51	0.00%	4.08%	13.33%	6.25%	66.67%	206,948	1.59	0.00	4.65	194.04	Industrial	1.43%
▲ TV PE**	US\$	0.98	3.16%	-2.00%	-13.27%	-18.33%	94.44%	99,024	1.75	0.00	-	809.21	Mining	2.93%
▼ UNACEMC1 PE**	S/.	2.92	-1.02%	-3.95%	-1.02%	-2.67%	77.78%	75,363	0.72	1.78	31.34	1,489.73	Industrial	3.00%
▼ VOLCABC1 PE**	S/.	1.17	-2.50%	-5.65%	-9.30%	-11.36%	100.00%	241,197	1.67	1.17	-	2,702.71	Mining	5.90%

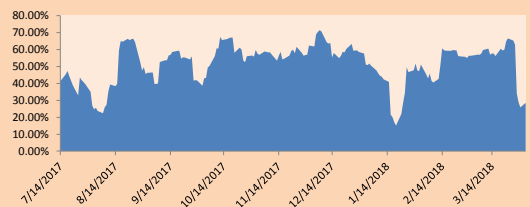
Quantity of shares: 26  
Source: Bloomberg, Económática  
\* Bloomberg Industry Classification System  
\*\* PER is used in the stock market and original currency of the instrument  
\*Legend: Variation 1D: 1 Day; 5D: 5 Days, 1M: 1 Month; YTD: Var.% 12/31/17 to date

### Sectorial Indices

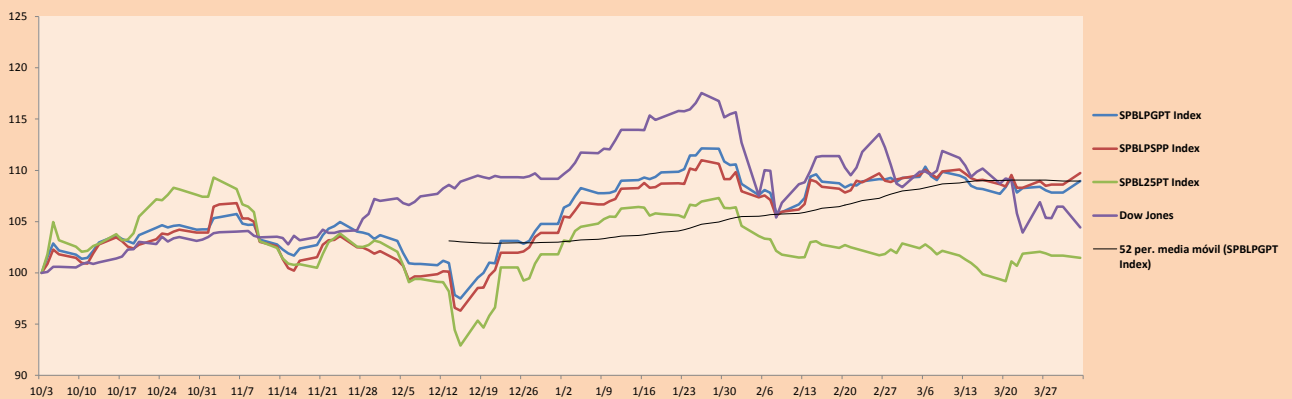
	Close	1D*	5D*	30D*	YTD*	Beta
▲ Mining Index	371.65	2.64%	0.42%	-3.15%	4.55%	1.21
▼ Consumer Index	953.25	-0.55%	-1.13%	0.70%	5.72%	0.51
▼ Industrial Index	236.74	-0.29%	0.34%	2.93%	0.33%	0.94
▲ Banking and Financial Index	1,159.27	1.26%	2.13%	3.29%	8.43%	1.09
▼ Construction Index	265.01	-0.24%	0.94%	3.88%	-0.05%	0.78
▼ Services Index	407.00	-0.02%	-0.89%	1.36%	-2.30%	0.51
▼ Juniors Index	33.52	-2.39%	-3.32%	-6.91%	-23.52%	1.13
▼ Electric Index	397.33	-0.03%	-0.89%	1.35%	-2.30%	0.51

\*Legend: Variation 1D: 1 Day; 5D: 5 Days, 1M: 1 Month; YTD: Var.% 12/31/17 to date

Correlation Graph of Returns of Mining Index against Metallic Index of London (3 months)



Indices (6 months)



Source: Bloomberg

Capital Market Laboratory Coordinator: Economist Bruno Bellido Anicama  
Support: Lith Fernandez, Maria Pia Quijano, Jairo Trujillo, Mario Villar  
e-mail: pulsoborsatil@ulima.edu.pe  
facebook: www.facebook.com/pulsoborsatil.ul  
Phone number : 4376767 Anexos: 35340 - 35310

The content of this document is just for informational purposes . The information and opinions expressed should not be consider as recommendations for future decisions .Under any circumstances, the Capital Market Laboratory of University of Lima will be responsible for the use of the statements in this document.

# PULSO BURSÁTIL

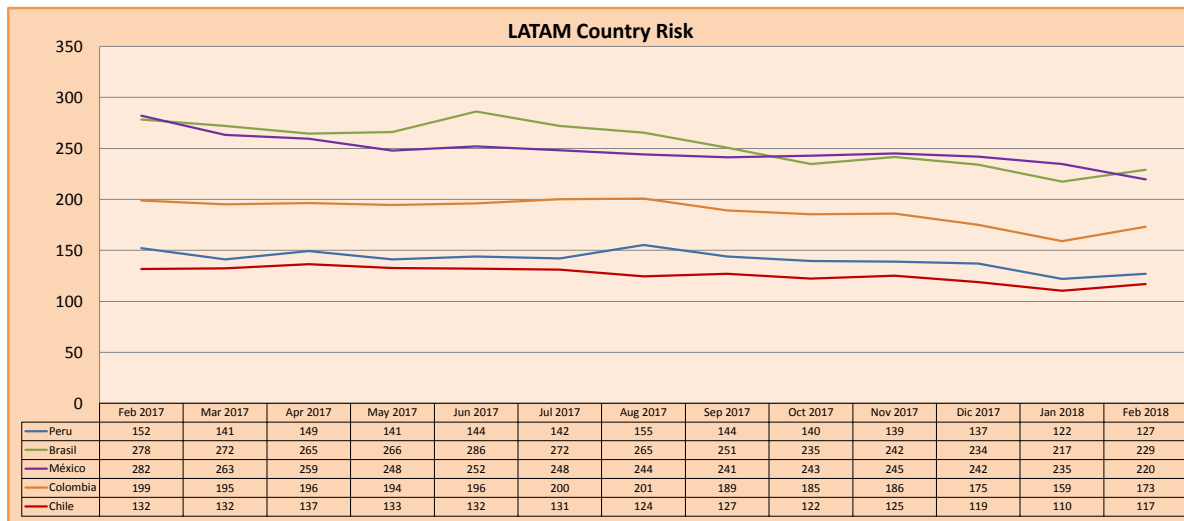
## SOVEREIGN RATING

RISK RATINGS			
Moody's	S&P	Fitch	
Aaa	AAA	AAA	Prime
Aa1	AA+	AA+	High credit quality
Aa2	AA	AA	
Aa3	AA-	AA-	
A1	A+	A+	Medium-high grade, with low credit risk
A2	A	A	
A3	A-	A-	
Baa1	BBB+	BBB+	Moderate Credit Risk
Baa2	BBB	BBB	
Baa3	BBB-	BBB-	
Ba1	BB+	BB+	It has speculative elements and it is subject to substantial credit risk
Ba2	BB	BB	
Ba3	BB-	BB-	
B1	B+	B+	It is considered speculative and it has high credit risk
B2	B	B	
B3	B-	B-	
Caa1	CCC+	CCC	Bad credit conditions and it is subject to high credit risk
Caa2	CCC		
Caa3	CCC-		
Ca	CC	DDD	Very close to default or in default
	C		
C	D		

Source: Bloomberg

Latin America Credit Rating			
Clasificadora de riesgo			
Country	Moody's	Fitch	S&P
Peru	A3	BBB+	BBB+
Mexico	A3	BBB+	BBB+
Venezuela	C	C	SD
Brazil	Ba2	BB-	BB-
Colombia	Baa2	BBB	BBB-
Chile	Aa3	A	A+
Argentina	B2	B	B+
Panama	Baa2	BBB	BBB

Source: Bloomberg



Source: Bloomberg

Capital Market Laboratory Coordinator: Economist Bruno Bellido Anicama  
Support: Lith Fernandez, Maria Pia Quijano, Jairo Trujillo, Mario Villar  
e-mail: pulsobursatil@ulima.edu.pe  
facebook: www.facebook.com/pulsobursatil.ul  
Phone number: 4376767 Anexos: 35340 - 35310

The content of this document is just for informational purposes. The information and opinions expressed should not be considered as recommendations for future decisions. Under any circumstances, the Capital Market Laboratory of University of Lima will be responsible for the use of the statements in this document.