

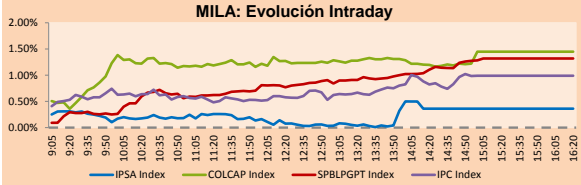
PULSO BURSÁTIL

Lima, April 17, 2018

MILA

Main Indices	Close	1 D	5 D	1 M	YTD	Market Cap. (US\$ bill)
▲ IPSA (Chile)	5,633.40	0.36%	0.49%	0.66%	1.24%	219.49
▲ IGPA (Chile)	28,171.83	0.27%	0.39%	0.50%	0.68%	269.38
▲ IGBC (Colombia)	12,221.28	2.08%	0.89%	6.26%	6.47%	121.04
▲ COLCAP (Colombia)	1,552.16	1.45%	0.27%	5.18%	2.54%	122.48
▲ S&P/BVL (Perú)*	21,308.80	1.32%	0.72%	3.31%	6.68%	115.02
▲ S&P/BVL SEL (Perú)	401.95	1.12%	1.55%	4.02%	9.22%	101.10
▲ S&P/BVL LIMA 25	31,979.93	1.75%	3.32%	5.94%	3.94%	107.04
▲ IPC (México)	48,933.61	1.03%	1.25%	3.07%	-0.85%	327.92
▼ S&P MILA 40	785.86	-0.79%	0.45%	4.93%	7.79%	334.35

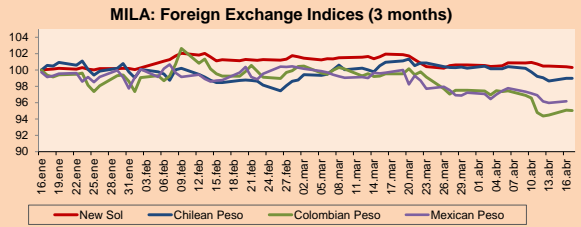
* Market Cap. Of the last price Legend: Variation 1D: 1 day; 5D: 5 days; 1M: 1 Month; YTD: Var%12/31/17 to date



Source: Bloomberg

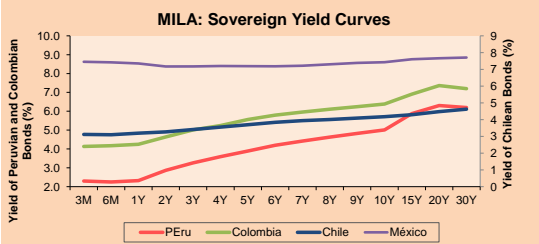
Currency	Price	1D*	5D*	30 D*	YTD*
▼ New Sol (PEN)	3,2203	-0.05%	-0.61%	-1.56%	-0.54%
▼ Chilean Peso (CLP)	596.38	-0.01%	-0.78%	-1.95%	-3.10%
▼ Colombian Peso (COP)	2,723.89	-0.05%	-1.58%	-4.51%	-8.80%
▲ Mexican Peso (MXN)	18.05	0.21%	-1.21%	-3.43%	-8.19%

* Legend: Variation 1D: 1 day; 5D: 5 days; 1M: 1 Month; YTD: Var%12/31/17 to date



Base: 16/01/18=100 Source: Bloomberg

Instrument	Currency	Price	Bid Yield (%)	Ask Yield (%)	Duration
PERU 4.125 08/25/2027	USD	105.1	3.50	3.46	7.76
PERU 7.125 03/30/19	USD	104.678	2.20	2.02	0.92
PERU 7.35 07/21/25	USD	124.765	3.48	3.44	5.78
PERU 8.75 11/21/33	USD	149.735	4.35	4.31	9.66
PERU 6.55 03/14/37	USD	128.93	4.32	4.28	11.45
PERU 5.625 11/18/2050	USD	120.973	4.42	4.40	16.19
CHILE 2.25 10/30/22	USD	96.027	3.23	3.17	4.23
CHILE 3.875 08/05/20	USD	102.147	2.94	2.86	2.18
CHILE 3.625 10/30/2042	USD	96.07	3.89	3.86	15.79
COLOM 11.75 02/25/20	USD	115.947	2.91	2.76	1.69
COLOM 11.85 03/09/28	USD	163.524	4.03	3.98	6.78
COLOM 10.375 01/28/33	USD	159.253	4.79	4.70	8.97
COLOM 7.375 09/18/37	USD	129.565	5.00	4.96	11.38
COLOM 6.125 01/18/41	USD	115.8	4.98	4.94	12.86
MEX 4 10/02/23	USD	102.553	3.50	3.46	4.89
MEX5.55 01/45	USD	109.572	4.915	4.891	14.36



Source: Bloomberg

Equity	Exchange	Amt.	Price	▲%
Largest gains				
SUD AMER-A	Santia.	CLP	300.00	81.82
CVERDEC1	Lima	USD	31.00	8.77
MILPOC1	Lima	PEN	5.35	7.21
MINSURI1	Lima	PEN	1.79	6.55

Per Turnover	Exchange	Amount (US\$)
ECOPETROL	Colomb.	28,715,245
ANDINA-B	Santia.	21,056,921
SQM-B	Santia.	19,997,954
HF	Santia.	14,864,767
BSANTANDER	Santia.	10,462,658

Largest losses	Exchange	Amt.	Price	▼%
AIHC1	Lima	PEN	2.85	-3.39
ENAEX	Santia.	CLP	9385.30	-2.86
TV	Lima	USD	0.95	-2.06
PROMIGAS	Colomb.	COP	7400.00	-1.99

Per Volume	Exchange	Volume
ESVAL-C	Santia.	128,563,445
BSANTANDER	Santia.	119,791,834
VAPORES	Santia.	88,349,002
CHILE	Santia.	63,123,576
ECOPETROL	Colomb.	27,452,832

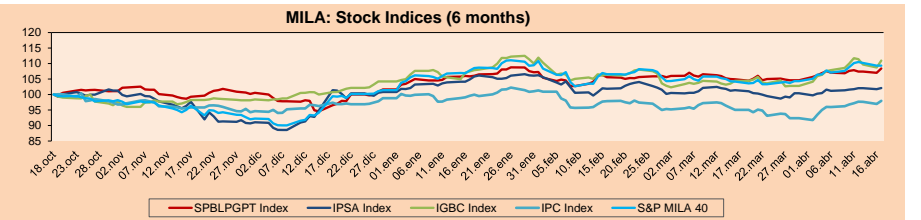
MILA

Peru: The General Index of the BVL of Peru ended today's session with a positive result of +1.32%. The index maintains a cumulative positive annual trend of +6.68% in local currency, while the yield adjusted to foreign currency is +7.26%. Then, the S&P/BVL Peru SEL obtained a positive return of +1.94%, while the S&P/BVL LIMA 25 grew +1.75%. The spot PEN reached S/3.2153.

Chile: The IPSA index ended the day with a positive result of +0.36%. The sectors of the index with the upward results were Energy (+1.61%) and Materials (+1.15%). On the other hand, the values with the most positive results were CAP SA (+3.05%) and Empresas COPEC SA (+1.61%).

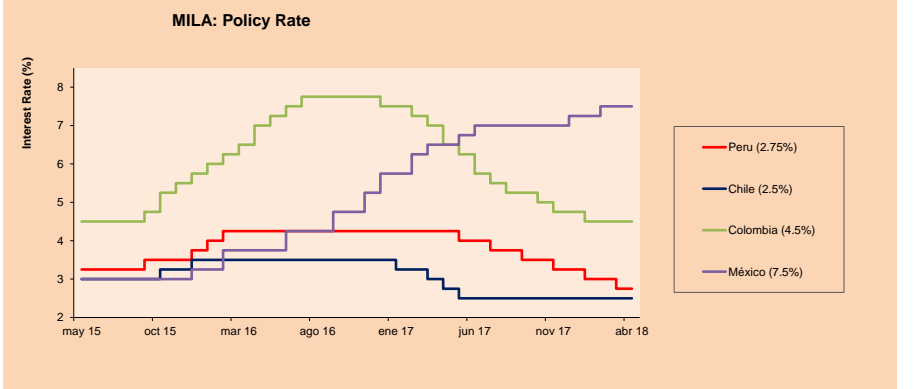
Colombia: The COLCAP index had a positive performance of +1.45%. The sectors of the index with the most favorable results were Energy (+3.85%) and Finance (+1.38%). On the other hand, the stocks with the highest profits were Ecopetrol SA (+3.99%) and Interconexión Eléctrica SA ESP (+2.86%).

Mexico: The IPC index of Mexico closed today with a negative result of +1.03%. The sectors of the index that generated the highest results were Consumer Products (+1.88%) and Materials (+1.29%). Finally, the stocks with the highest yields were Genera SAB de CV (+4.18%) and Grupo Bimbo SAB de CV (+3.44%).



Base: 19/10/17=100 Source: Bloomberg

ETFs	Curr.	Close	1D	5D	30 D	YTD	Exchange
▲ iShares MSCI All Peru Caped Index Fund	USD	44.27	1.56%	1.93%	7.09%	8.03%	NYSE Arca
▲ iShares MSCI Chile Capped	USD	54.68	0.29%	1.07%	3.49%	4.83%	BATS
▲ Global X MSCI Colombia	USD	16.225	1.72%	3.13%	10.68%	12.36%	NYSE Arca
▲ iShares MSCI Mexico Capped	USD	54.16	0.76%	2.30%	7.40%	9.88%	NYSE Arca
▲ iShares MSCI Emerging Markets	USD	47.73	0.21%	-0.67%	-3.01%	1.29%	NYSE Arca
▲ Vanguard FTSE Emerging Markets	USD	46.62	0.09%	-0.77%	-2.57%	1.55%	NYSE Arca
▲ iShares Core MSCI Emerging Markets	USD	57.82	0.14%	-0.58%	-2.56%	1.62%	NYSE Arca
▼ iShares JP Morgan Emerging Markets Bonds	USD	62.42	-0.21%	-0.98%	-0.22%	2.73%	BATS
▼ Morgan Stanley Emerging Markets Domestic	USD	7.72	-0.13%	-0.13%	-1.91%	0.26%	New York



Source: Bloomberg

Capital Market Laboratory Coordinator: Economist Bruno Bellido Anicama
Support: Lith Fernandez, Maria Pia Quijano, Jairo Trujillo, Mario Villar
e-mail: pulsobursatil@ulima.edu.pe
facebook: www.facebook.com/pulsobursatil.ul
Phone number : 4376767 Anexes: 35340 - 35310

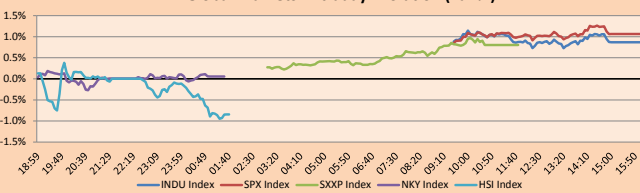
PULSO BURSÁTIL

WORLD

Main Indices	Close	1 D*	5 D*	1 M*	YTD*	Market Cap. (US\$ Mill.)
▲ Dow Jones (USA)	24,786.63	0.87%	1.55%	-0.64%	0.27%	6,737,750
▲ Standard & Poor's 500 (USA)	2,706.39	1.07%	1.86%	-1.66%	1.23%	23,670,668
▲ NASDAQ Composite (USA)	7,281.10	1.74%	2.63%	-2.68%	5.47%	11,247,061
▲ Stoxx EUROPE 600 (Europe)	380.77	0.80%	0.62%	0.81%	-2.16%	8,262,541
▲ DAX (Germany)	12,585.57	1.57%	1.52%	1.58%	-2.57%	954,070
▲ FTSE 100 (United Kingdom)	7,228.05	0.39%	-0.56%	0.86%	-6.01%	1,404,843
▲ CAC 40 (France)	5,353.54	0.76%	0.87%	1.34%	0.77%	1,228,986
▲ IBEX 35 (Spain)	9,803.90	0.39%	0.41%	0.44%	-2.39%	502,108
▼ MSCI AC Asia Pacific Index	173.66	-0.07%	-0.43%	-2.51%	-0.09%	14,863,724
▼ HANG SENG (Hong Kong)	30,062.75	-0.83%	-2.17%	-4.57%	0.48%	3,101,708
▼ SHANGHAI SE Comp. (China)	3,066.80	-1.41%	-3.87%	-6.21%	-7.27%	5,029,204
▲ NIKKEI 225 (Japan)	21,847.59	0.06%	0.24%	0.78%	-4.03%	3,571,578
▲ BOVESPA (Brazil)	84,086.13	-1.48%	-0.50%	-0.94%	10.06%	757,900
▲ Merval (Argentina)	31,402.77	1.27%	-2.54%	-3.54%	4.45%	132,615

*Legend: Variation 1D: 1 Day; 5D: 5 Days; 1M: 1 Month; YTD: Var.% 12/31/17 to date

Global Markets: Intraday Evolution (var %)

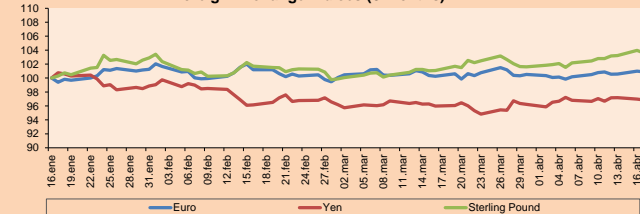


Source: Bloomberg

Currency	Price	1 D*	5 D*	1 M*	YTD*
▼ Euro	1.2370	-0.08%	0.11%	0.65%	3.04%
▼ Yen	107.0000	-0.11%	-0.19%	0.93%	-5.05%
▼ Sterling Pound	1.4288	-0.36%	0.79%	2.48%	5.74%
▲ Yuan	6.2825	0.10%	-0.01%	-0.83%	-3.45%
▼ Hong Kong Dollar	7.8498	0.00%	0.00%	0.10%	0.46%
▼ Brazilian Real	3.4080	-0.34%	-0.03%	3.88%	3.01%
▼ Argentine Peso	20.1788	-0.19%	0.11%	-0.06%	8.35%

*Legend: Variation 1D: 1 Day; 5D: 5 Days; 1M: 1 Month; YTD: Var.% 12/31/17 to date

Foreign Exchange Indices (3 months)

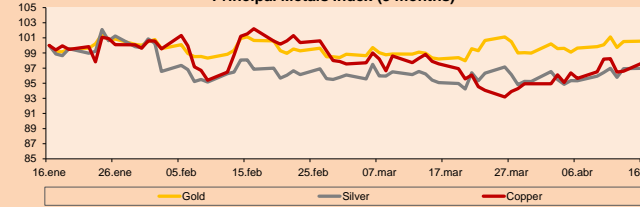


Base: 16/01/18=100
Source: Bloomberg

Commodities	Close	1 D*	5 D*	1 M*	YTD*
▲ Oro (US\$ Oz. T) (LME)	1,347.47	0.11%	0.60%	2.52%	3.41%
▲ Plata (US\$ Oz. T) (LME)	16.78	0.67%	1.24%	2.67%	-0.92%
- Cobre (US\$ TM) (LME)	6.876.25	0.00%	-0.46%	0.17%	-4.59%
- Zinc (US\$ TM) (LME)	3,124.75	0.00%	-3.39%	-4.25%	-6.37%
▲ Petróleo WTI (US\$ Barril) (NYM)	66.67	0.68%	1.77%	6.83%	10.62%
- Estafío (US\$ TM) (LME)	21,090.00	0.00%	0.78%	0.05%	4.95%
- Plomo (US\$ TM) (LME)	2,375.50	0.00%	-0.64%	-0.35%	-4.40%
- Molibdeno (US\$ TM) (LME)	24,874.00	0.00%	0.00%	25.15%	59.06%
▼ Azúcar #11 (US\$ Libra) (NYB-ICE)	11.82	-2.88%	-3.04%	-8.02%	-21.41%
- Cacao (US\$ TM) (NYB-ICE)	2,704.00	0.00%	6.84%	6.16%	42.24%
▼ Café Arábica (US\$ TM) (NYB-ICE)	115.85	-0.60%	-3.09%	-3.62%	-11.53%

*Legend: Variación 1D: 1 Día; 5D: 5 Días; 1M: 1 Mes; YTD: Var.% 31/12/17 a la fecha

Principal Metals Index (3 months)



Base: 16/01/18=100
Source: Bloomberg

Equity

Wall Street (Stocks from S&P 500)

Largest gains	Curr.	Price	▲ %	Exchange	Largest losses	Curr.	Price	▼ %	Exchange
AMZN LW	USD	1503.83	4.32	NASDAQ GS	BMV UN	USD	52.38	-3.14	New York
LRCX UW	USD	212.33	4.31	NASDAQ GS	RF UN	USD	17.95	-2.82	New York
PDL UN	USD	65.3	4.31	New York	MAT LW	USD	14.33	-2.65	NASDAQ GS
NW UN	USD	27.37	4.27	New York	CFG UN	USD	41.29	-2.55	New York

Europe (Stocks from STOXX EUROPE 600)

Largest gains	Curr.	Price	▲ %	Exchange	Largest losses	Curr.	Price	▼ %	Exchange
SNH GY	EUR	101.622	14.23	Xetra	AENA SQ	EUR	166.7	-4.11	Soc.Bol SIBIE
GEN DC	DKK	1294	8.74	Copenhagen	AMEAS FH	EUR	25.57	-3.69	Helsinki
MDC LN	GBP	624.8	5.43	Londres	KOMB CK	CZK	925.5	-3.59	Prague SE
NOKIA FH	EUR	4.746	5.16	Helsinki	RB/LN	GBP	5806	-3.18	Londres

Global Overview

United States:

The US stock market ended today with positive results among its main indices. The Dow Jones Industrial Average, S&P 500 and Nasdaq Composite indexes closed near their highest points in the last month and above their 50-day moving averages. These results were partly due to the expected growth of the companies listed in these indexes as the fastest since 2011, which could be attributed to the recent tax reform approved by the government of President Donald Trump. In corporate news, the media transmission company Netflix Inc. was among the highest performing stocks during the session, closing at +9.2% after the results of its first quarter exceeded Wall Street's predictions. In currency news, the US dollar appreciated against its main rivals. According to Lukman Otunuga, FXTM research analyst, this result is due more to a technical rebound rather than to a change in sentiment towards the dollar, after the disappointing data from the United Kingdom and Germany that affected the pound sterling and euro.

Europe:

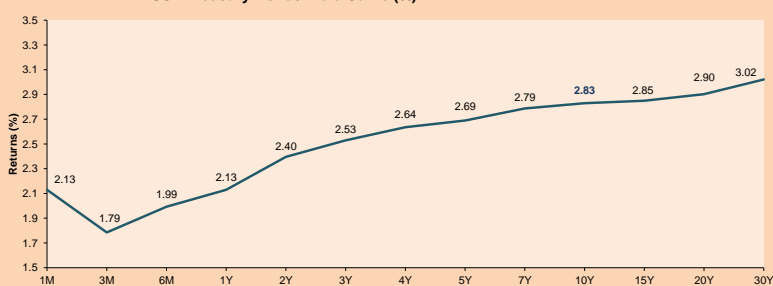
The European market closed the day with positive results among its main indexes, even reaching its highest value in the last 7 weeks. Geopolitical tensions were put aside and this allowed the rise of the British FTSE100 index of +0.39%. Another influential factor was the news that the United Kingdom reached its lowest rate of unemployment in more than 40 years, 4.2%, while wages rose by 2.8%, being for the first time in almost a year above the inflation rate. This news shows a better outlook for the possible rise in interest rates by the Bank of England in May. On the contrary, the German economic expectations fell during the month of April over the predictions, influenced by the international conflicts of the last weeks. In other news, the pound sterling fell -0.31% and came away from its intraday value of \$1.4377, the highest since the Brexit referendum in 2016, to close at \$1.4323. On the other hand, one of the stocks with the highest yields of the day was the biotechnology company Genmab A/S, obtaining a positive variation of +8.74% and leading the BBG Europe 500

Asia:

The Asian stock market finished today with mixed results among its main indices. China's shares were the hardest hit in the session despite the Asian giant reported an increase of its gross domestic product in the first quarter from a year earlier. The HSI index fell -0.83%, while the SHCOMP fell -1.41%, with the financial and real estate sectors most affected. On the other hand, the Central Bank of Hong Kong was forced to buy dollars, again, to prevent it from depreciating against the dollar; since Thursday the monetary authority has bought HK \$ 19 billion. In business news, the shares of the Asian giant ZTE have stopped trading after the United States took action against the company as banning US firms from selling ZTE. In other news, an anonymous South Korean official told to the Munhwa Ilbo newspaper that North Korea and South Korea are in talks to officially end their confrontation. In Beijing, the Central Bank of China said that it would free 200 billion dollars for banks to lend and amortize short-term loans, as well as reduce the amount of reserves that commercial banks must maintain by 1 percentage point, it will be valid on April 25, releasing about 1.3 trillion yuan in funds.

ETFs	Curr.	Close	1D	5D	30 D	YTD	Exchange
SPDR S&P 500 ETF TRUST	USD	270.19	1.07%	1.90%	-1.46%	1.25%	NYSE Arca
ISHARES MSCI EMERGING MARKET	USD	47.73	0.21%	-0.67%	-3.01%	1.29%	NYSE Arca
ISHARES IBOX USD HIGH YIELD	USD	86.46	0.05%	0.65%	0.77%	-0.92%	NYSE Arca
FINANCIAL SELECT SECTOR SPDR	USD	27.58	0.00%	-0.54%	-4.47%	-1.18%	NYSE Arca
VANECK VECTORS GOLD MINERS E	USD	22.93	0.57%	3.01%	7.00%	-1.33%	NYSE Arca
ISHARES RUSSELL 2000 ETF	USD	157.06	1.09%	2.40%	-0.47%	3.02%	NYSE Arca
SPDR GOLD SHARES	USD	127.75	0.09%	0.50%	2.53%	3.32%	NYSE Arca
ISHARES 20+ YEAR TREASURY BO	USD	121.27	0.27%	0.16%	1.22%	-4.41%	NASDAQ GM
POWERSHARES QQQ TRUST SERIES	USD	166.10	2.15%	3.03%	-2.88%	6.64%	NASDAQ GM
ISHARES NASDAQ BIOTECHNOLOGY	USD	107.28	1.94%	1.49%	-4.84%	0.48%	NASDAQ GM
ENERGY SELECT SECTOR SPDR	USD	72.42	0.39%	3.59%	7.59%	0.22%	NYSE Arca
PROSHARES ULTRA VIX ST FUTUR	USD	14.51	-9.03%	-24.51%	1.04%	42.12%	NYSE Arca
UNITED STATES OIL FUND LP	USD	13.41	0.22%	1.21%	6.85%	11.06%	NYSE Arca
ISHARES MSCI BRAZIL ETF	USD	42.61	1.74%	-0.49%	-4.48%	5.34%	NYSE Arca
SPDR S&P OIL & GAS EXP & PR	USD	37.89	0.64%	4.76%	10.08%	1.91%	NYSE Arca
UTILITIES SELECT SECTOR SPDR	USD	50.98	1.01%	1.70%	1.45%	-3.23%	NYSE Arca
ISHARES US REAL ESTATE ETF	USD	75.78	1.30%	1.41%	-0.92%	-6.46%	NYSE Arca
SPDR S&P BIOTECH ETF	USD	91.12	2.50%	3.00%	-2.62%	7.36%	NYSE Arca
ISHARES IBOX INVESTMENT GRA	USD	116.98	0.01%	-0.15%	0.19%	-3.77%	NYSE Arca
ISHARES JP MORGAN USD EMERGI	USD	112.03	-0.21%	-0.22%	-0.18%	-3.51%	NASDAQ GM
REAL ESTATE SELECT SECT SPDR	USD	31.09	1.34%	1.40%	-0.54%	-5.62%	NYSE Arca
ISHARES CHINA LARGE-CAP ETF	USD	47.03	0.04%	-2.02%	-4.39%	1.86%	NYSE Arca
CONSUMER STAPLES SPDR	USD	53.28	0.23%	1.47%	0.06%	-6.35%	NYSE Arca
VANECK VECTORS JUNIOR GOLD M	USD	33.65	0.57%	3.22%	7.13%	-1.41%	NYSE Arca
SPDR BBG BARG HIGH YIELD BND	USD	36.23	0.06%	0.64%	0.72%	-1.33%	NYSE Arca
VANGUARD REAL ESTATE ETF	USD	76.00	1.17%	1.40%	-0.73%	-8.41%	NYSE Arca

USA Treasury Bonds Yield Curve (%)



Source: Bloomberg

Capital Market Laboratory Coordinator: Economist Bruno Bellido Anicam
Support: Lith Fernandez, Maria Pia Quijano, Jairo Trujillo, Mario Villar
e-mail: pulsohorsatil@ulima.edu.pe
facebook: www.facebook.com/pulsohorsatil.ul
Phone number : 4376767 Anexes: 35340 - 35310

PULSO BURSÁTIL

LIMA

Stocks

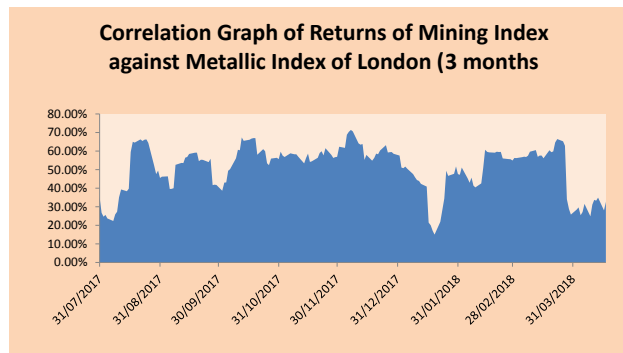
Ticker	Currency	Price	1D*	5D*	30D*	YTD*	Frequency	Volume (US\$)	Beta	Dividend Yield (%)	Price Earning	Market Cap. (M US\$)	Economic Sector*	Index Weight	
▲ ALICORC1 PE**	S/.	11.43	1.33%	2.14%	-1.04%	7.83%	105.26%	500,953	0.90	1.22	21.54	3,033.21	Industrial	3.53%	
▲ ATACOCB1 PE**	S/.	0.60	5.26%	5.26%	5.26%	-11.76%	105.26%	71,887	1.85	0.00	-	208.39	Mining	1.02%	
- BACKUS11 PE**	S/.	20.20	0.00%	0.50%	-0.49%	9.72%	84.21%	71,187	0.39	0.00	4.94	8,350.31	Industrial	0.82%	
▼ BAP PE**	US\$	228.00	-0.65%	-3.88%	5.46%	9.62%	105.26%	873,852	1.06	4.05	-	18,185.51	Diverse	5.82%	
▼ BVN PE**	US\$	16.41	-0.24%	2.50%	13.96%	16.22%	105.26%	495,871	1.42	0.35	-	4,515.99	Mining	5.88%	
▲ CASAGRC1 PE**	S/.	5.60	1.82%	2.75%	1.82%	-9.53%	105.26%	42,787	0.67	7.21	14.96	146.48	Agricultural	1.31%	
▲ CONTINC1 PE**	S/.	4.50	1.81%	1.12%	7.14%	8.43%	105.26%	165,957	0.72	3.29	16.20	6,823.60	Finance	2.85%	
▲ CORARE11 PE**	S/.	0.78	1.30%	-1.27%	9.86%	8.33%	105.26%	86,518	1.31	5.50	6.69	329.45	Industrial	1.72%	
- CPACASC1 PE**	S/.	7.90	0.00%	-0.25%	2.60%	-3.07%	105.26%	6,433,668	0.63	4.43	37.28	1,048.55	Industrial	2.38%	
▲ CVERDEC1 PE**	US\$	31.00	8.77%	6.90%	8.62%	4.38%	105.26%	271,628	1.19	1.84	43.90	10,851.74	Mining	5.25%	
▼ ENGEPEC1 PE**	S/.	1.74	-1.69%	-4.40%	-11.22%	-12.12%	105.26%	84,211	13,338	0.90	3.62	11.45	1,563.23	Public Services	1.44%
▲ ENDISPC1**	S/.	5.79	1.40%	1.58%	0.70%	2.66%	73.68%	50,534	0.75	3.71	10.78	1,148.12	Public Services	0.98%	
▲ FERREYC1 PE**	S/.	2.61	2.35%	2.76%	2.76%	2.35%	105.26%	1,348,808	1.03	4.92	9.76	822.09	Diverse	4.90%	
▼ GRAMONC1 PE**	S/.	2.40	-0.83%	16.50%	50.00%	28.34%	105.26%	215,827	0.89	0.00	14.52	491.92	Diverse	4.05%	
▲ IFS PE**	US\$	42.00	1.18%	4.74%	-0.12%	9.09%	100.00%	1,150,884	0.61	3.10	17.40	4,750.66	Diverse	7.22%	
▲ INRETC1 PE**	US\$	23.75	3.26%	6.03%	5.79%	13.10%	105.26%	379,150	1.00	0.82	27.18	2,441.67	Diverse	5.28%	
▲ LUSURC1 PE**	S/.	12.24	1.92%	1.92%	2.86%	1.58%	105.26%	146,885	0.45	5.07	12.74	1,850.85	Public Services	1.81%	
▲ MILPOC1 PE**	S/.	5.35	7.21%	3.88%	5.94%	16.30%	94.74%	339,723	1.42	16.02	9.49	2,196.72	Mining	1.56%	
▲ MINSUR11 PE**	S/.	1.79	6.55%	6.55%	6.55%	-0.56%	100.00%	182,098	1.31	3.85	19.85	1,602.51	Mining	3.09%	
- PML PE**	US\$	0.27	0.00%	6.32%	5.49%	-15.94%	105.26%	22,154	1.62	0.00	-	70.10	Mining	2.12%	
▲ RELAPAC1 PE**	S/.	0.31	1.97%	5.42%	8.74%	3.32%	105.26%	152,389	1.61	0.00	4.30	341.38	Industrial	2.12%	
▲ SCCO PE**	US\$	56.55	1.67%	0.98%	2.72%	18.90%	94.74%	220,202	1.43	28.78	43,714.76	Mining	2.14%		
- SIDERC1 PE**	S/.	0.56	0.00%	9.80%	24.44%	16.67%	100.00%	45,647	1.46	0.00	5.10	213.53	Industrial	1.43%	
▼ TV PE**	US\$	0.95	-2.06%	-5.00%	-12.04%	-20.83%	105.26%	371,392	1.77	0.00	-	787.09	Mining	2.93%	
▲ UNACEMC1 PE**	S/.	2.90	0.69%	1.40%	0.00%	-3.33%	105.26%	239,625	0.71	1.79	19.84	1,482.74	Industrial	3.00%	
▲ VOLCABC1 PE**	S/.	1.16	1.75%	2.65%	1.75%	-12.12%	105.26%	1,259,583	1.46	1.18	-	2,701.00	Mining	5.90%	

Quantity of shares: 26
 Source: Bloomberg, Económica
 * Bloomberg Industry Classification System
 ** PER is used in the stock market and original currency of the instrument
 *Legend: Variation 1D: 1 Day; 5D: 5 Days; 1M: 1 Month; YTD: Var.% 12/31/17 to date

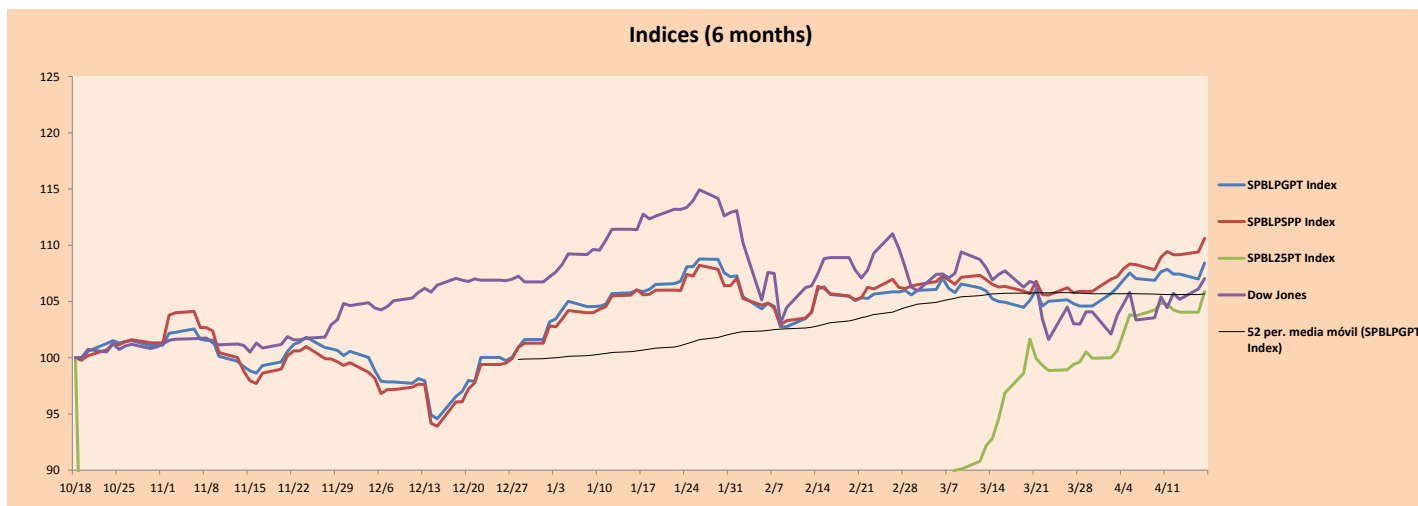
Sectorial Indices

	Close	1D*	5D*	30D*	YTD*	Beta
▲ Mining Index	385.65	1.46%	1.39%	3.17%	8.49%	1.13
▲ Consumer Index	985.75	1.56%	2.64%	0.68%	9.33%	0.53
▲ Industrial Index	247.33	0.79%	3.54%	8.44%	4.82%	0.86
▲ Banking and Financial Index	1,178.44	1.12%	-2.17%	5.04%	10.22%	1.22
▲ Construction Index	278.95	0.05%	4.13%	10.94%	5.21%	0.71
▲ Services Index	400.72	1.39%	0.20%	-1.84%	-3.81%	0.59
▼ Juniors Index	37.42	-0.98%	3.28%	5.17%	-14.62%	0.78
▲ Electric Index	391.20	1.39%	0.19%	-1.84%	-3.81%	0.59

*Legend: Variation 1D: 1 Day; 5D: 5 Days; 1M: 1 Month; YTD: Var.% 12/31/17 to date



Indices (6 months)



Source: Bloomberg

Capital Market Laboratory Coordinador: Economist Bruno Bellido Anicama
 Support: Lith Fernandez, Maria Pia Quijano, Jairo Trujillo, Mario Villar
 e-mail: pulsobursatil@ulima.edu.pe
 facebook: www.facebook.com/pulsobursatil.ul
 Phone number : 4376767 Anexes: 35340 - 35310

PULSO BURSÁTIL

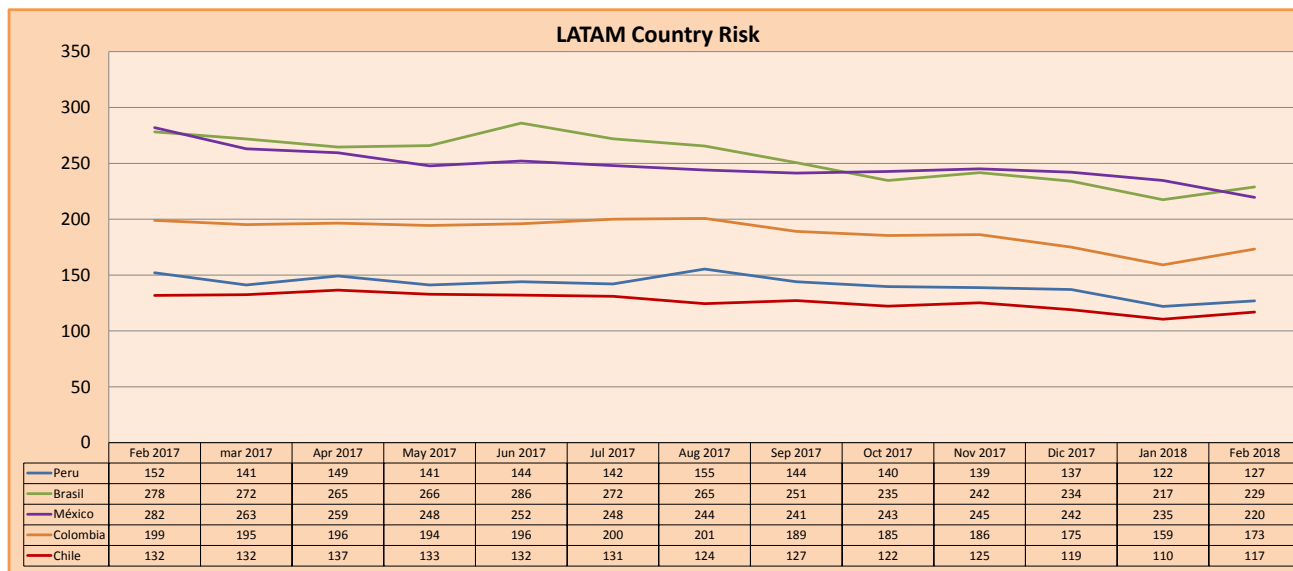
SOVEREIGN RATING

RISK RATINGS			
Moody's	S&P	Fitch	
Aaa	AAA	AAA	Prime
Aa1	AA+	AA+	High credit quality
Aa2	AA	AA	
Aa3	AA-	AA-	
A1	A+	A+	Medium-high grade, with low credit risk
A2	A	A	
A3	A-	A-	
Baa1	BBB+	BBB+	Moderate Credit Risk
Baa2	BBB	BBB	
Baa3	BBB-	BBB-	
Ba1	BB+	BB+	It has speculative elements and it is subject to substantial credit risk
Ba2	BB	BB	
Ba3	BB-	BB-	
B1	B+	B+	It is considered speculative and it has high credit risk
B2	B	B	
B3	B-	B-	
Caa1	CCC+		Bad credit conditions and it is subject to high credit risk
Caa2	CCC		
Caa3	CCC-		
Ca	CC	CCC	Very close to default or in default
	C		
C	D	DDD	

Source: Bloomberg

Latin America Credit Rating			
Clasificadora de riesgo			
Country	Moody's	Fitch	S&P
Peru	A3	BBB+	BBB+
Mexico	A3	BBB+	BBB+
Venezuela	C	C	SD
Brazil	Ba2	BB-	BB-
Colombia	Baa2	BBB	BBB-
Chile	Aa3	A	A+
Argentine	B2	B	B+
Panama	Baa2	BBB	BBB

Source: Bloomberg



Source: Bloomberg

Capital Market Laboratory Coordinator: Economist Bruno Bellido Anicama
 Support: Lith Fernandez, Maria Pia Quijano, Jairo Trujillo, Mario Villar
 e-mail: pulsobursatil@ulima.edu.pe
 facebook: www.facebook.com/pulsobursatil.ul
 Phone number : 4376767 Anexxes: 35340 - 35310

The content of this document is just for informational purposes . The information and opinions expressed should not be consider as recommendations for future decisions . Under any circumstances, the Capital Market Laboratory of University of Lima will be responsible for the use of the statements in this document.