



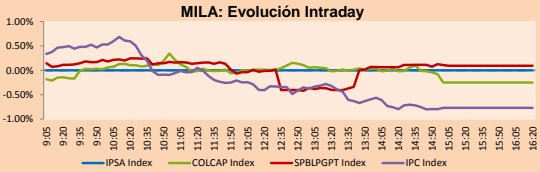
PULSO BURSÁTIL

Lima, May 21, 2018

MILA

Main Indices	Close	1 D	5 D	1 M	YTD	Market Cap. (US\$ bill)
▼ IPSA (Chile)	5,667.86	-0.38%	-0.61%	-0.38%	1.86%	207.64
▼ IGPA (Chile)	28,679.66	-0.29%	-0.40%	0.37%	2.50%	256.17
▼ IGBC (Colombia)	12,084.45	-0.35%	-2.25%	-2.29%	5.28%	115.59
▼ COLCAP (Colombia)	1,516.71	-0.25%	-2.15%	-2.87%	0.20%	119.58
▲ S&P/BVL (Perú)*	21,114.27	0.09%	0.12%	-1.59%	5.71%	111.15
▲ S&P/BVL SEL (Perú)	394.98	-0.47%	0.06%	-2.06%	7.32%	96.11
▼ S&P/BVL LIMA 25	31,113.22	-0.21%	-1.40%	-3.32%	1.13%	103.29
▼ IPC (México)	45,305.02	-0.79%	-2.61%	-6.46%	-8.20%	281.27
▲ S&P MILA 40	737.10	0.05%	-2.02%	-7.14%	1.10%	320.32

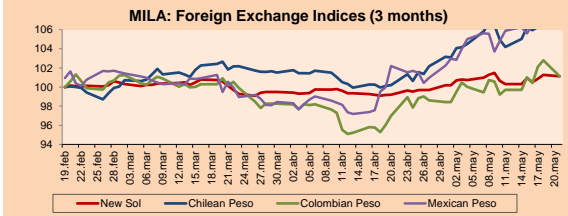
* Market Cap. Of the last price Legend: Variation 1D: 1 day; 5D: 5 days; 1M: 1 Month; YTD: Var%12/31/17 to date



Source: Bloomberg

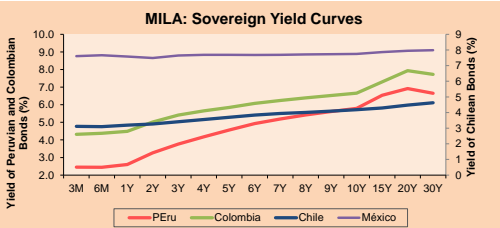
Currency	Price	1D*	5D*	30 D*	YTD*
▼ New Sol (PEN)	3,284.1	-0.11%	0.85%	1.97%	1.43%
- Chilean Peso (CLP)	636.76	0.00%	1.91%	6.84%	3.46%
▼ Colombian Peso (COP)	2,876.48	-1.62%	1.42%	4.27%	-3.69%
▼ Mexican Peso (MXN)	19.82	-0.67%	1.00%	6.96%	0.81%

* Legend: Variation 1D: 1 day; 5D: 5 days; 1M: 1 Month; YTD: Var%12/31/17 to date



Base: 19/02/18=100 Source: Bloomberg

Instrument	Currency	Price	Bid Yield (%)	Ask Yield (%)	Duration
PERU 4.125 08/25/2027	USD	101.09	4.00	3.96	7.61
PERU 7.125 03/30/19	USD	103.863	2.59	2.44	0.83
PERU 7.35 07/21/25	USD	121	3.98	3.92	5.65
PERU 8.75 11/21/33	USD	144.557	4.70	4.66	9.73
PERU 6.55 03/14/37	USD	123.033	4.71	4.67	11.17
PERU 5.625 11/18/2050	USD	113.412	4.82	4.79	15.90
CHILE 2.25 10/30/22	USD	95.223	3.45	3.39	4.18
CHILE 3.875 08/05/20	USD	101.8	3.05	3.00	2.09
CHILE 3.625 10/30/2042	USD	91.253	4.22	4.18	15.70
COLOM 11.75 02/25/20	USD	114.152	3.43	3.32	1.59
COLOM 11.85 03/09/28	USD	158.203	4.48	4.42	6.62
COLOM 10.375 01/28/33	USD	155.005	5.09	4.97	8.73
COLOM 7.375 09/18/37	USD	123.25	5.44	5.40	11.09
COLOM 6.125 01/18/41	USD	109.8	5.39	5.35	12.47
MEX 4 10/02/23	USD	99.958	4.04	3.98	4.78
MEX5.55 01/45	USD	102.55	5.386	5.351	13.78



Source: Bloomberg

Equity	Exchange	Amt.	Price	▲%	Largest losses	Exchange	Amt.	Price	▼%
VOLCABC1	Lima	PEN	1.08	2.86	GRAMONC1	Lima	PEN	1.90	-7.32
MOROCO01	Lima	PEN	2.89	2.48	Fabricato	Colomb.	COP	7.80	-3.82
CORFICOLCF	Colomb.	COP	23780.00	2.24	PODERC1	Lima	PEN	9.80	-2.00
CEMARGOS	Colomb.	COP	8880.00	2.07	SIDERC1	Lima	PEN	0.73	-1.35

Per Turnover	Exchange	Amount (US\$)	Per Volume	Exchange	Volume
ECOPETROL	Colomb.	9,838,424	ECOPETROL	Colomb.	8,976,904
PFBCOLOM	Lima	4,835,942	CONTINC1	Lima	2,003,912
CONTINC1	Lima	2,745,786	PFAVAL	Colomb.	1,616,349
PFDAVVNDA	Colomb.	2,123,177	EEB	Colomb.	1,336,408
BOLOMBIA	Colomb.	1,608,740	VOLCABC1	Lima	1,023,520

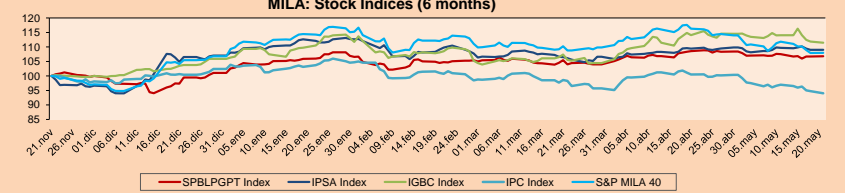
MILA

Peru: The General Index of the BVL of Peru ended today's session with a positive result of + 0.09%. The index maintains a cumulative positive annual trend of + 5.71% in local currency, while the yield adjusted to foreign currency is + 4.22%. Then, the S & P / BVL Peru SEL obtained a negative yield of -0.47%, while the S & P / BVL LIMA 25 decreased -0.21%. The spot PEN reached S / 3.2835.

Chile: The IPSA index ended the day with a negative result of -0.38%. The sectors of the index with the downward results were Industrial (-1.86%) and Products of first necessity (-0.91%). On the other hand, the values with the most negative results were Inversiones la Construcción SA (-5.12%) and Aguas Andinas SA (-4.59%).

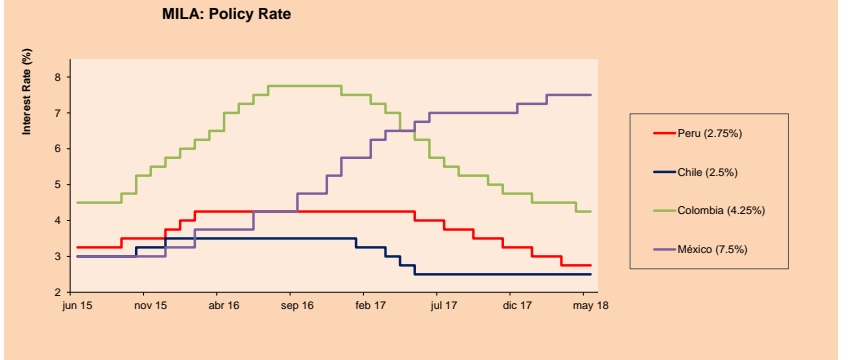
Colombia: The COLCAP index had a negative yield of -0.25%. The sectors of the index with the downward results were Energy (-0.78%) and Finance (-0.45%). On the other hand, the shares with the lowest gains were Cemex Latam Holdings SA (-3.50%) and Grupo de Inversiones Suramerica (-1.34%).

Mexico: Mexico's IPC index closed today's session with a negative result of -0.79%. The sectors of the index that generated the lowest results were Telecommunications Services (-2.45%) and Non-basic Consumer Products (-1.67%). Finally, the stocks with the lowest yields were Kimberly-Clark de México SAB de CV (-5.33%) and Grupo Lala SA (-3.09%).



Base: 22/11/17=100 Source: Bloomberg

ETFs	Curr.	Close	1D	5D	30 D	YTD	Exchange
▲ iShares MSCI All Peru Capped Index Fund	USD	42.65	0.31%	-1.20%	-4.88%	4.08%	NYSE Arca
▼ iShares MSCI Chile Capped	USD	51.47	-0.37%	-2.30%	-6.89%	-1.32%	Cboe
▲ Global X MSCI Colombia	USD	14,848.2	1.16%	-4.21%	-7.66%	2.85%	NYSE Arca
▼ iShares MSCI Mexico Capped	USD	45.38	-0.37%	-4.24%	-13.08%	-7.93%	NYSE Arca
▲ iShares MSCI Emerging Markets	USD	46.35	0.61%	-2.34%	-1.93%	-1.63%	NYSE Arca
▲ Vanguard FTSE Emerging Markets	USD	45.24	0.65%	-2.18%	-1.95%	-1.27%	NYSE Arca
▲ iShares Core MSCI Emerging Markets	USD	56.11	0.43%	-2.21%	-2.04%	-1.35%	NYSE Arca
▲ iShares JP Morgan Emerging Markets Bonds	USD	60.76	0.61%	-1.25%	-1.67%	0.00%	Cboe
▼ Morgan Stanley Emerging Markets Domestic	USD	7.08	-0.28%	-3.41%	-7.69%	-6.25%	New York



Source: Bloomberg

Capital Market Laboratory Coodinator: Economist Bruno Bellido Anicama
Support: Lith Fernandez, Maria Pia Quijano, Jairo Trujillo, Mario Villar
e-mail: pulsobursatil@ulima.edu.pe
facebook: www.facebook.com/pulsobursatil.ul
Phone number : 4376767 Annexes: 35340 - 35310

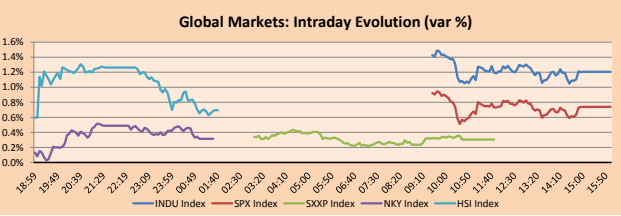


PULSO BURSÁTIL

WORLD

Main Indices	Close	1 D*	5 D*	1 M*	YTD*	Market Cap. (US\$ Mil.)
▲ Dow Jones (USA)	25,013.29	1.21%	0.46%	2.25%	1.19%	6,792,293
▲ Standard & Poor's 500 (USA)	2,733.01	0.74%	0.11%	2.35%	2.22%	23,901,682
▲ NASDAQ Composite (USA)	7,394.04	0.54%	-0.23%	3.47%	7.11%	11,518,536
▲ Stoxx EUROPE 600 (Europe)	395.87	0.30%	0.94%	3.67%	1.72%	8,999,026
▼ DAX (Germany)	13,077.72	-0.28%	0.59%	4.28%	1.24%	1,019,326
▲ FTSE 100 (United Kingdom)	7,859.17	1.03%	1.92%	6.68%	2.23%	1,626,479
▲ CAC 40 (France)	5,637.51	0.41%	1.75%	4.15%	6.12%	1,357,570
▼ IBEX 35 (Spain)	10,066.50	-0.45%	-1.86%	1.84%	0.23%	529,558
▼ MSCI AC Asia Pacific Index	174.20	-0.10%	-0.28%	0.21%	0.22%	14,859,978
▲ HANG SENG (Hong Kong)	31,234.35	0.05%	-0.97%	2.68%	4.40%	3,168,039
▲ SHANGHAI SE Comp. (China)	3,213.84	0.64%	1.25%	4.83%	-2.82%	5,200,180
▲ NIKKEI 225 (Japan)	23,002.37	0.31%	0.60%	3.79%	1.04%	3,601,394
▼ BOVESPA (Brazil)	81,815.31	-1.52%	-4.01%	-4.37%	7.09%	712,051
▼ Merval (Argentina)	31,632.45	-0.74%	3.91%	1.51%	5.21%	133,909

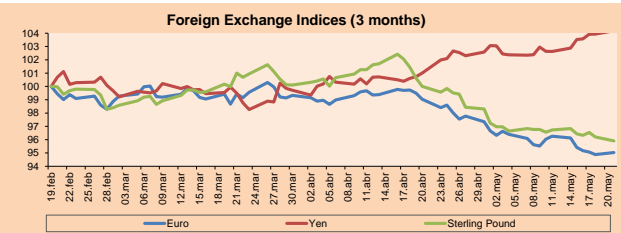
*Legend: Variation 1D: 1 Day; 5D: 5 Days; 1M: 1 Month; YTD: Var.% 12/31/17 to date



Source: Bloomberg

Currency	Price	1 D*	5 D*	1 M*	YTD*
▲ Euro	1.1791	0.16%	-1.14%	-4.04%	-1.78%
▲ Yen	111.0500	0.24%	1.27%	3.15%	-1.46%
▼ Sterling Pound	1.3427	-0.31%	-0.95%	-4.09%	-0.64%
▲ Yuan	6.3835	0.05%	0.70%	1.38%	-1.89%
▼ Hong Kong Dollar	7.8485	-0.02%	-0.02%	0.06%	0.44%
▼ Brazilian Real	3.6778	-1.80%	1.49%	7.76%	11.16%
▼ Argentine Peso	24.3811	-0.17%	-2.41%	20.71%	30.92%

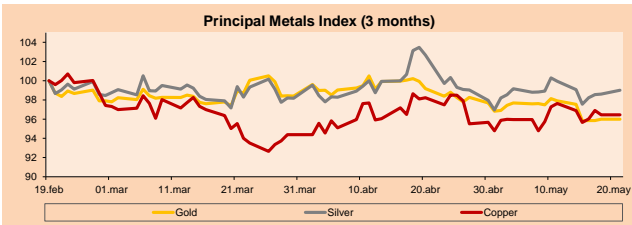
*Legend: Variation 1D: 1 Day; 5D: 5 Days; 1M: 1 Month; YTD: Var.% 12/31/17 to date



Base: 19/02/18=100
Source: Bloomberg

Commodities	Close	1 D*	5 D*	1 M*	YTD*
○ Oro (US\$ Oz. T) (LME)	1,292.60	0.00%	-1.58%	-3.22%	-0.80%
▲ Plata (US\$ Oz. T) (LME)	16.51	0.40%	-0.07%	-3.57%	-2.95%
▲ Cobre (US\$ TM) (LME)	6,825.25	0.00%	-0.45%	-1.81%	-5.30%
▲ Zinc (US\$ TM) (LME)	3,096.50	0.00%	2.00%	-3.97%	-7.22%
▲ Petróleo WTI (US\$ Barril) (NYM)	72.24	1.35%	1.80%	5.61%	20.28%
○ Estano (US\$ TM) (LME)	20,835.00	0.00%	-0.87%	-5.49%	3.68%
○ Plomo (US\$ TM) (LME)	2,314.50	0.00%	-2.49%	-1.79%	-6.85%
○ Molibdeno (US\$ TM) (LME)	24,878.00	0.00%	0.02%	0.00%	59.09%
▲ Azúcar #11 (US\$ Libra) (NYB-ICE)	12.10	3.77%	7.46%	1.94%	-19.55%
▲ Cacao (US\$ TM) (NYB-ICE)	2,615.00	-2.35%	-5.90%	-4.18%	37.56%
▲ Café Arábica (US\$ TM) (NYB-ICE)	120.20	1.86%	2.21%	2.12%	-8.21%

*Lenda: Variación 1D: 1 Día; 5D: 5 Días; 1M: 1 Mes; YTD: Var.% 31/12/17 a la fecha



Base: 19/02/18=100
Source: Bloomberg

Equity

Wall Street (Stocks from S&P 500)

Largest gains	Curr.	Price	▲%	Exchange	Largest losses	Curr.	Price	▼%	Exchange
KIM UN	USD	14.64	4.20	New York	CELG UW	USD	74.69	-4.70	NASDAQ GS
NFX UN	USD	30.15	4.00	New York	SYMC UW	USD	21.59	-2.70	NASDAQ GS
MU UN	USD	55.48	3.91	NASDAQ GS	AGN UN	USD	154.21	-2.66	New York
BA UN	USD	363.92	3.61	New York	CPB UN	USD	33.58	-2.30	New York

Europe (Stocks from STOXX EUROPE 600)

Largest gains	Curr.	Price	▲%	Exchange	Largest losses	Curr.	Price	▼%	Exchange
DOM SS	SEK	93.8	6.53	Stockholm	BAB LN	GBp	750	-2.90	Londres
RYA ID	EUR	16.27	5.14	Dublin	MT NA	EUR	29.515	-2.37	EN Amsterdam
GLFC NA	EUR	85.96	4.12	EN Amsterdam	SOBI SS	SEK	182	-2.33	Stockholm
III LN	GBp	1026.5	3.79	Londres	MB IM	EUR	9.032	-1.66	Borsa Italiana

Global Overview

United States:

The US stock market ended the day with positive results, while the dollar yielded gains and assets considered refuges as Treasuries, yen and gold also fell. In greater detail, the dollar rose in early trading, but then fell and fell, while investors evaluated Treasury Secretary Steven Mnuchin. The comments on Sunday that the United States "Put the trade war on hold" amid progress in talks with China. On the other hand, banks have complained for a long time that heavy compliance burdens make it almost impossible to use a major jump in Volcker's Rule to protect against losses. What is at issue is what is known as the exemption from coverage included in Volcker, which stipulated that banks are not violating the restrictions of the speculative trading rule as long as they can demonstrate that transactions offset market risk. In addition, modernization, known within agencies as Volcker 2.0, is the latest effort by financial regulators to soften the rules that the Trump administration blames for containing economic growth. Volcker, one of the most radical demands that followed the 2008 financial crisis, prohibited banks from trading exclusively for their own benefit.

Europe:

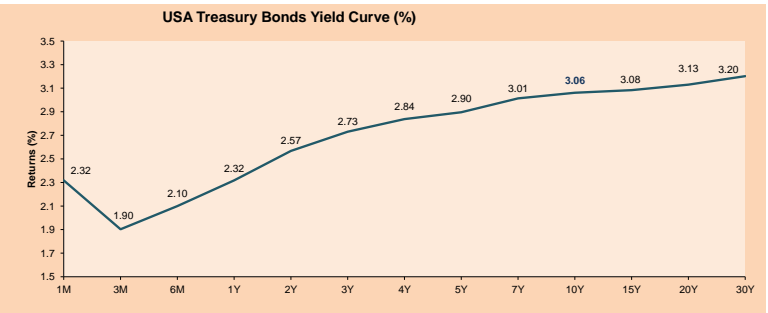
The European stock market closed with mixed results among its main indices. Markets in the world were boosted after the United States temporarily suspended tariffs on Chinese products. However, the actions of the Italian market continue to be the most affected in the region due to the current political environment. The Italian FTSE MIB index fell -1.52% after the anti-establishment Movement 5 Stars and The League declared their candidate for prime minister. This situation puts investors on alert because the coalition has promised to change the budgetary guidelines and immigration rules of Brussels, as well as to cut taxes or increase fiscal spending. Given this context, the 10-year Italian government bond rates appreciated to + 8.00%, jumping from its highest level in March 2017. Meanwhile, the British FTSE 100 index reached a record when it rose + 1.03% at the close of the day, driven by the relaxation of commercial tensions between the two largest economies in the world, as well as by the depreciation of the pound sterling, which has fallen to \$ 1.3413. In business news, Ryanair Holdings PLC shares rose + 5.14% after it published a 10% increase in annual profits.

Asia:

The Asian stock market ended the day today with positive results among its main indices. This occurred in a context in which fears of a possible trade war between the United States and China were reduced; US Treasury Secretary Steven Mnuchin said Sunday morning that the administration of President Trump delayed the implementation of tariffs on Chinese goods in which the details of a trade agreement between the two countries are arranged. Following this statement, the US trade representative, Robert Lighthizer, said that tariffs are still likely to be imposed. For these reasons, Chinese stocks benefited, so its benchmark, the Shanghai Composite, closed at +0.64%. Also, the Hong Kong benchmark, the Hang Seng, grew by +0.60%. For its part, the Japanese market was benefited both by news about the reduction of tensions, and by the depreciation of the yen against the US dollar, which benefits its exporters. However, weaknesses in the financial sector limited these gains, taking the insurance company MS&A Insurance Group with a decline of -3.96%.

ETFs

ETFs	Curr.	Close	1D	5D	30 D	YTD	Exchange
SPDR S&P 500 ETF TRUST	USD	273.37	0.75%	0.14%	2.54%	2.85%	NYSE Arca
ISHARES MSCI EMERGING MARKET	USD	46.35	0.61%	-2.34%	-1.93%	-1.63%	NYSE Arca
ISHARES IBOXX USD HIGH YIELD	USD	85.52	0.14%	-0.27%	-0.01%	-0.36%	NYSE Arca
FINANCIAL SELECT SECTOR SPDR	USD	28.15	0.72%	-0.32%	0.97%	1.23%	NYSE Arca
VANECK VECTORS GOLD MINERS E	USD	22.33	0.63%	-1.98%	-1.67%	-3.92%	NYSE Arca
ISHARES RUSSELL 2000 ETF	USD	162.94	0.68%	2.33%	4.75%	7.12%	NYSE Arca
SPDR GOLD SHARES	USD	122.48	0.06%	-1.61%	-3.28%	-0.95%	NYSE Arca
ISHARES 20+ YEAR TREASURY BO	USD	117.27	0.05%	-1.12%	-0.79%	-6.78%	NASDAQ GM
POWERSHARES QQQ TRUST SERIES	USD	168.40	0.56%	-0.80%	3.76%	8.29%	NASDAQ GM
ISHARES NASDAQ BIOTECHNOLOGY	USD	106.38	-1.32%	-1.21%	1.35%	-0.37%	NASDAQ GM
ENERGY SELECT SECTOR SPDR	USD	78.91	1.02%	2.14%	7.05%	9.98%	NYSE Arca
PROSHARES ULTRA VIX ST FUTUR	USD	11.19	-4.77%	-2.19%	-28.18%	9.60%	NYSE Arca
UNITED STATES OIL FUND LP	USD	14.67	1.66%	2.02%	6.69%	22.15%	NYSE Arca
ISHARES MSCI BRAZIL ETF	USD	38.39	0.23%	-5.56%	-11.05%	-5.09%	NYSE Arca
SPDR S&P OIL & GAS EXP & PR	USD	44.22	2.46%	5.81%	13.79%	19.16%	NYSE Arca
UTILITIES SELECT SECTOR SPDR	USD	49.24	0.51%	-1.89%	-2.11%	-5.80%	NYSE Arca
ISHARES US REAL ESTATE ETF	USD	76.30	1.07%	-1.00%	3.21%	-5.03%	NYSE Arca
SPDR S&P BIOTECH ETF	USD	91.78	-1.91%	-1.12%	3.20%	8.21%	NYSE Arca
ISHARES IBOXX INVESTMENT GRA	USD	114.35	0.06%	-0.61%	-0.69%	-4.87%	NYSE Arca
ISHARES JPMORGAN USD EMERGI	USD	107.93	0.02%	-0.96%	-2.53%	-5.84%	NASDAQ GM
REAL ESTATE SELECT SECT SPDR	USD	30.87	1.01%	-1.41%	2.15%	-5.73%	NYSE Arca
ISHARES CHINA LARGE-CAP ETF	USD	48.28	0.81%	-0.72%	4.01%	4.75%	NYSE Arca
CONSUMER STAPLES SPDR	USD	49.75	0.42%	0.46%	-1.47%	-12.06%	NYSE Arca
VANECK VECTORS JUNIOR GOLD M	USD	33.12	0.85%	-1.28%	-1.10%	-2.96%	NYSE Arca
SPDR BBG BARC HIGH YIELD BND	USD	35.70	0.11%	-0.34%	-0.35%	-1.05%	NYSE Arca
VANGUARD REAL ESTATE ETF	USD	76.74	1.19%	-1.12%	3.63%	-6.62%	NYSE Arca



Source: Bloomberg

Capital Market Laboratory Coordinator: Economist Bruno Bellido Anicama
Support: Lith Fernandez, Maria Pia Quijano, Jairo Trujillo, Mario Villar
e-mail: pulsobursatil@ulima.edu.pe
facebook: www.facebook.com/pulsobursatil.ul
Phone number : 4376767 Annexes: 35340 - 35310



PULSO BURSÁTIL

LIMA

Stocks

Ticker	Currency	Price	1D*	5D*	30D*	YTD*	Frequency	Volume (US\$)	Beta	Dividend Yield (%)	Price Earning	Market Cap. (M US\$)	Economic Sector*	Index Weight
▼ ALICORC1 PE**	S/.	11.90	-0.75%	2.59%	3.03%	14.61%	100.00%	34,894	0.86	2.02	22.42	3,092.31	Industrial	3.53%
ATACOCB1 PE**	S/.	0.52	0.00%	0.00%	-13.33%	-23.53%	100.00%	10,784	1.84	0.00	-	149.60	Mining	1.02%
▲ BACKUSI1 PE**	S/.	20.51	2.04%	0.54%	2.04%	14.54%	84.21%	1,566,030	0.38	4.96	5.02	8,313.47	Industrial	0.82%
▲ BAP PE**	US\$	223.40	0.52%	-1.13%	-3.12%	9.50%	100.00%	128,715	1.06	4.14	-	17,818.71	Diverse	5.82%
▼ BVN PE**	US\$	15.39	-0.58%	-1.03%	-6.73%	9.20%	100.00%	3,848	1.33	0.37	-	4,242.02	Mining	5.88%
- CASAGRC1 PE**	S/.	5.30	0.00%	0.95%	-6.19%	-14.38%	100.00%	2,413	0.83	7.62	14.16	135.94	Agricultural	1.31%
▲ CONTINC1 PE**	S/.	4.50	1.12%	-1.10%	3.45%	12.33%	100.00%	2,745,786	0.67	3.47	16.20	6,691.04	Finance	2.85%
▼ CORAREI1 PE**	S/.	0.83	-1.19%	-2.35%	1.22%	18.57%	100.00%	38,544	1.24	5.17	7.12	337.58	Industrial	1.72%
▲ CPACASC1 PE**	S/.	8.03	0.12%	-1.83%	1.65%	-1.47%	100.00%	53,533	0.57	4.36	37.89	1,044.78	Industrial	2.38%
- CVERDEC1 PE**	US\$	28.00	0.00%	0.00%	-3.45%	-3.84%	89.47%	408	1.19	0.00	39.65	9,801.57	Mining	5.25%
▲ ENGEPEC1 PE**	S/.	1.87	1.08%	0.54%	10.45%	-2.60%	57.89%	3,270	0.84	4.08	12.00	1,647.38	Public Services	1.44%
▲ ENDISPC1**	S/.	5.80	0.17%	-0.85%	0.35%	6.13%	78.95%	15,012	0.73	3.72	10.80	1,127.76	Public Services	0.98%
▲ FERREYC1 PE**	S/.	2.62	0.38%	2.34%	2.34%	8.22%	100.00%	80,377	0.98	5.17	9.80	809.21	Diverse	4.90%
▼ GRAMONC1 PE**	S/.	1.90	-7.32%	-19.15%	-17.75%	1.60%	89.47%	547,554	0.52	0.00	-	381.87	Diverse	4.05%
- IFS PE**	US\$	41.00	0.00%	-1.20%	-2.61%	10.03%	94.74%	2,138,415	0.63	0.00	15.09	4,637.55	Diverse	7.22%
▲ INRETC1 PE**	US\$	25.00	1.01%	4.17%	4.17%	19.05%	100.00%	2,500	1.00	0.78	42.91	2,570.18	Diverse	5.28%
▲ LUSURC1 PE**	S/.	12.20	0.58%	-1.21%	0.41%	2.25%	100.00%	114,573	0.45	5.16	12.70	1,808.96	Public Services	1.81%
- MILPOC1 PE**	S/.	5.15	0.00%	0.98%	-2.83%	11.96%	84.21%	47,680	1.31	16.64	7.99	2,073.95	Mining	1.56%
- MINSUR1 PE**	S/.	1.71	0.00%	0.59%	-5.00%	-5.00%	78.95%	9	1.24	0.00	16.65	1,501.15	Mining	3.09%
▲ PML PE**	US\$	0.27	1.92%	-1.85%	-5.02%	-17.19%	89.47%	3,673	1.70	0.00	-	69.05	Mining	2.12%
- RELAPAC1 PE**	S/.	0.28	0.00%	2.19%	-9.68%	-9.68%	100.00%	10,487	1.50	0.00	5.52	301.38	Industrial	2.12%
- SCCO PE**	US\$	52.25	0.00%	0.79%	-5.99%	11.21%	84.21%	52,381	0.00	0.00	24.14	40,390.74	Mining	2.14%
▼ SIDERC1 PE**	S/.	0.73	-1.35%	5.80%	21.67%	52.08%	100.00%	15,447	1.41	0.00	6.65	272.95	Industrial	1.43%
- TV PE**	US\$	0.88	0.00%	-1.12%	-11.11%	-26.67%	94.74%	36,510	1.73	0.00	-	729.09	Mining	2.93%
- UNACEMC1 PE**	S/.	2.90	0.00%	-1.59%	-0.92%	-2.49%	89.47%	798,196	0.67	1.79	19.84	1,453.93	Industrial	3.00%
▲ VOLCABC1 PE**	S/.	1.08	2.86%	-0.92%	-8.47%	-18.18%	100.00%	333,174	1.40	1.26	-	2,589.01	Mining	5.90%

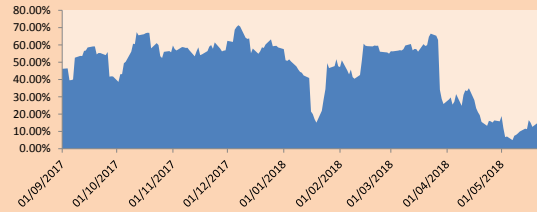
Quantity of shares: 26
 Source: Bloomberg, Econometría
 * Bloomberg Industry Classification System
 ** PER is used in the stock market and original currency of the instrument
 *Legend: Variation 1D: 1 Day; 5D: 5 Days; 1M: 1 Month; YTD: Var.% 12/31/17 to date

Sectorial Indices

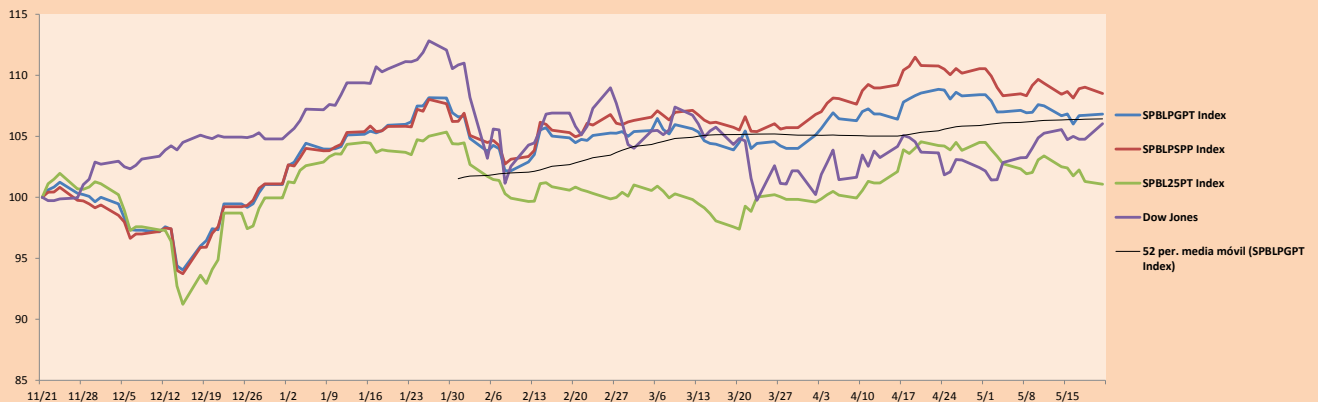
	Close	1D*	5D*	30D*	YTD*	Beta
▼ Mining Index	366.48	-0.07%	0.56%	-4.67%	3.09%	1.12
▲ Consumer Index	1,039.08	0.11%	2.87%	3.46%	15.24%	0.52
▼ Industrial Index	246.06	-0.80%	-2.56%	-1.50%	4.28%	0.74
▲ Banking and Financial Index	1,180.53	0.35%	-0.30%	-1.03%	10.42%	1.30
▼ Construction Index	270.00	-1.49%	-5.34%	-2.99%	1.84%	0.55
▲ Services Index	407.18	0.70%	0.19%	2.32%	-2.26%	0.56
▲ Juniors Index	39.18	0.88%	2.75%	2.11%	-10.61%	0.72
▲ Electric Index	397.51	0.70%	0.19%	2.32%	-2.25%	0.56

*Legend: Variation 1D: 1 Day; 5D: 5 Days; 1M: 1 Month; YTD: Var.% 12/31/17 to date

Correlation Graph of Returns of Mining Index against Metallic Index of London (3 months)



Indices (6 months)



Source: Bloomberg

Capital Market Laboratory Coordinator: Economist Bruno Bellido Anicama
 Support: Lith Fernandez, Maria Pia Quijano, Jairo Trujillo, Mario Villar
 e-mail: pulsobursatil@ulima.edu.pe
 facebook: www.facebook.com/pulsobursatil.ul
 Phone number : 4376767 Annexes: 35340 - 35310

The content of this document is just for informational purposes. The information and opinions expressed should not be considered as recommendations for future decisions. Under any circumstances, the Capital Market Laboratory of University of Lima will be responsible for the use of the statements in this document.

PULSO BURSÁTIL

SOVEREIGN RATING

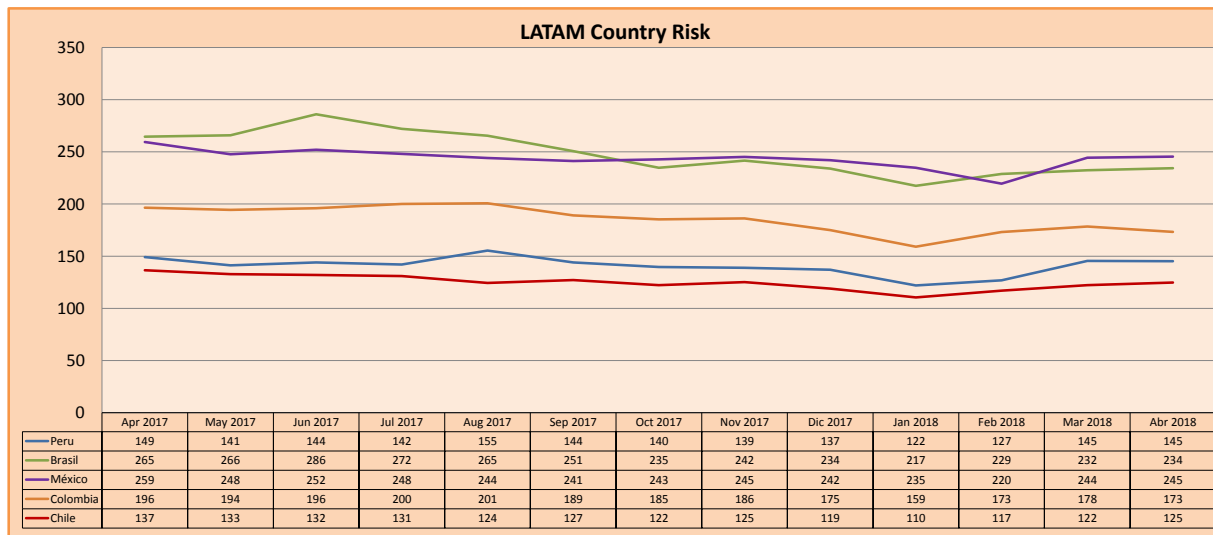
RISK RATINGS

Moody's	S&P	Fitch	
Aaa	AAA	AAA	Prime
Aa1	AA+	AA+	High credit quality
Aa2	AA	AA	
Aa3	AA-	AA-	
A1	A+	A+	Medium-high grade, with low credit risk
A2	A	A	
A3	A-	A-	
Baa1	BBB+	BBB+	Moderate Credit Risk
Baa2	BBB	BBB	
Baa3	BBB-	BBB-	
Ba1	BB+	BB+	It has speculative elements and it is subject to substantial credit risk
Ba2	BB	BB	
Ba3	BB-	BB-	
B1	B+	B+	It is considered speculative and it has high credit risk
B2	B	B	
B3	B-	B-	
Caa1	CCC+		Bad credit conditions and it is subject to high credit risk
Caa2	CCC		
Caa3	CCC-	CCC	
Ca	C		Very close to default or in default
		DDD	
C	D	DD	

Source: Bloomberg

Latin America Credit Rating			
Clasificadora de riesgo			
Country	Moody's	Fitch	S&P
Peru	A3	BBB+	BBB+
Mexico	A3	BBB+	BBB+
Venezuela	C	C	SD
Brazil	Ba2	BB-	BB-
Colombia	Baa2	BBB	BBB-
Chile	Aa3	A	A+
Argentina	B2	B	B+
Panama	Baa2	BBB	BBB

Source: Bloomberg



Source: Bloomberg

Capital Market Laboratory Coordinator: Economist Bruno Bellido Anicama
Support: Lith Fernandez, Maria Pia Quijano, Jairo Trujillo, Mario Villar
e-mail: pulsobursatil@ulima.edu.pe
facebook: www.facebook.com/pulsobursatil.ul
Phone number : 4376767 Annexes: 35340 - 35310

The content of this document is just for informational purposes. The information and opinions expressed should not be considered as recommendations for future decisions. Under any circumstances, the Capital Market Laboratory of University of Lima will be responsible for the use of the statements in this document.