

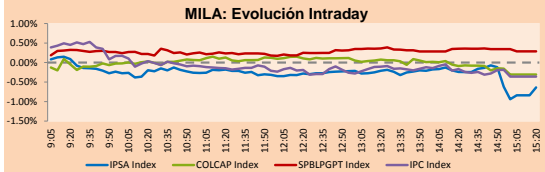
PULSO BURSÁTIL

Lima, June 5, 2018

MILA

Main Indices	Close	1 D	5 D	1 M	YTD	Market Cap. (US\$ bill)
▼ IPSA (Chile)	5,523.05	-0.64%	0.52%	-1.76%	-0.75%	205.22
▼ IGPA (Chile)	27,928.49	-0.60%	0.35%	-1.47%	-0.19%	253.18
▼ IGBC (Colombia)	12,387.91	-0.38%	3.03%	0.71%	7.93%	117.68
▼ COLCAP (Colombia)	1,559.67	-0.31%	2.31%	0.82%	3.04%	121.90
▲ S&P/BVL (Perú)*	21,188.76	0.29%	2.27%	0.18%	6.08%	110.33
▲ S&P/BVL SEL (Perú)	395.84	0.83%	1.97%	0.45%	7.61%	96.06
▲ S&P/BVL LIMA 25	31,135.15	0.18%	0.60%	-1.55%	1.20%	102.27
▲ IPC (México)	45,130.70	-0.25%	1.08%	-3.96%	-8.56%	270.25
▲ S&P MILA 40	743.53	1.32%	1.93%	-1.74%	1.98%	320.18

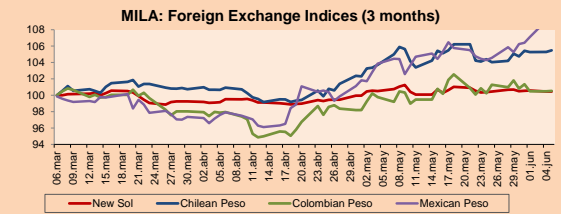
* Market Cap. Of the last price Legend: Variation 1D: 1 day; 5D: 5 days; 1M: 1 Month; YTD: Var%12/31/17 to date



Source: Bloomberg

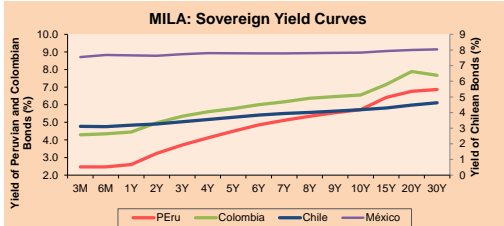
Currency	Price	1D*	5D*	30 D*	YTD*
▲ New Sol (PEN)	3,2689	0.03%	-0.24%	-0.04%	0.96%
▲ Chilean Peso (CLP)	632.28	0.18%	0.38%	1.70%	2.74%
▲ Colombian Peso (COP)	2,866.40	0.06%	-1.26%	0.76%	-4.03%
▲ Mexican Peso (MXN)	20.45	1.87%	3.07%	6.10%	4.01%

*Legend: Variation 1D: 1 day; 5D: 5 days; 1M: 1 Month; YTD: Var%12/31/17 to date



Base: 06/03/18=100 Source: Bloomberg

Instrument	Currency	Price	Bid Yield (%)	Ask Yield (%)	Duration
PERU 4.125 08/25/2027	USD	102.345	3.84	3.80	7.58
PERU 7.125 03/30/19	USD	103.777	2.51	2.30	0.79
PERU 7.375 07/21/25	USD	122.2	3.79	3.74	5.62
PERU 8.75 11/21/33	USD	146.78	4.54	4.49	9.74
PERU 6.55 03/14/37	USD	125.557	4.54	4.49	11.21
PERU 5.625 11/19/2050	USD	116.128	4.67	4.64	16.09
CHILE 2.25 10/30/22	USD	95.382	3.42	3.35	4.14
CHILE 3.875 08/05/20	USD	101.863	3.02	2.94	2.05
CHILE 3.625 10/30/2042	USD	93.073	4.10	4.06	15.78
COLOM 11.75 02/25/20	USD	113.94	3.37	3.27	1.55
COLOM 11.85 03/09/28	USD	159.661	4.33	4.26	6.60
COLOM 10.375 01/28/33	USD	154.5	5.17	4.95	8.72
COLOM 7.375 09/18/37	USD	125.003	5.31	5.27	11.10
COLOM 6.125 01/18/41	USD	111.727	5.25	5.21	12.52
MEX 4 10/02/23	USD	99.967	4.04	3.98	4.74
MEX5.55 01/45	USD	102.26	5.406	5.372	13.78



Source: Bloomberg

Equity	Exchange	Amt.	Price	▲%
Largest gains				
MIRL	Lima	USD	0.06	7.14
CARTON	Colomb.	COP	6000.00	6.19
CONCONCRET	Colomb.	COP	826.00	4.56
ANTARCHILE	Santia.	CLP	11427.00	3.95
Per Turnover	Exchange	Amount (US\$)		
SOM-B	Santia.	138,340,751		
HF	Santia.	28,832,796		
FALABELLA	Santia.	19,380,828		
COPEC	Santia.	14,586,082		
ECOPETROL	Colomb.	11,552,275		

Largest losses	Exchange	Amt.	Price	▼%
AUSTRALIS	Santia.	CLP	50.50	-4.72
ORO BLANCO	Santia.	CLP	6.28	-4.08
PEHUENCHE	Santia.	CLP	1910.00	-4.02
SM-CHILE A	Santia.	CLP	304.01	-3.49
Per Volume	Exchange	Volume		
BSANTANDER	Santia.	82,085,786		
VAPORES	Santia.	56,899,095		
CHILE	Santia.	35,456,484		
ESVAL-C	Santia.	26,785,302		
ECOPETROL	Colomb.	10,739,782		

MILA

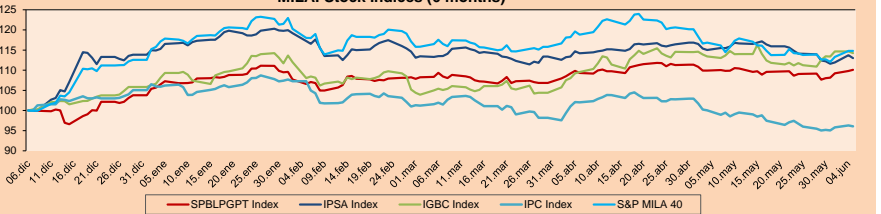
Peru: The General Index of the BVL of Peru ended today's session with a positive result of 0.29%. The index maintains a cumulative positive annual trend of 6.08% in local currency, while the yield adjusted to foreign currency is 5.07%. Then, the S&P/BVL Peru SEL obtained a negative return of -0.05%, while the S&P/BVL LIMA 25 grew 0.18%. The spot PEN reached S/3.2689.

Chile: The IPSA index ended the day with a negative result of -0.64%. The sectors of the index with the downward results were Materials (-1.61%) and Non-Basic Consumption Products (-1.27%). On the other hand, the values with the most negative results were Sociedad de Inversiones Oro Blanco SA (-4.08%) and Engie Energia Chile SA (-2.72%).

Colombia: The COLCAP index had a negative yield of -0.31%. The sectors of the index with the least favorable results were Energy (-1.00%) and Materials (-0.71%). On the other hand, the stocks with the lowest profits were Canacol Energy Ltd (-2.56%) and Avianca Holding (-1.82%).

Mexico: Mexico's IPC index closed today's session with a negative result of -0.25%. The sectors of the index that generated the lowest results were Public Services (-1.19%) and Products of First Need (-0.90%). Finally, the stocks with the lowest returns were Grupo Lala SAB de CV (-3.03%) and Industrias Peñafiel SAB de CV (-2.46%).

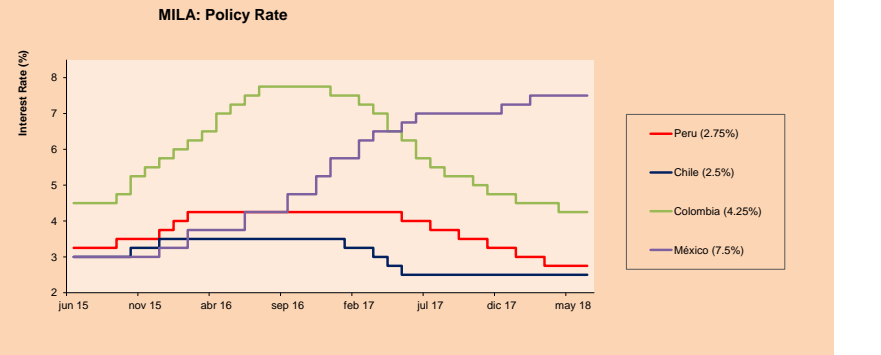
MILA: Stock Indices (6 months)



Base: 07/12/17=100 Source: Bloomberg

ETFs	Curr.	Close	1D	5D	30 D	YTD	Exchange
▲ iShares MSCI All Peru Capped Index Fund	USD	42.8	0.28%	2.07%	-0.93%	4.44%	NYSE Arca
▼ iShares MSCI Chile Capped	USD	50.14	-1.44%	-0.04%	-3.78%	-3.87%	Cboe
▼ Global X MSCI Colombia	USD	15.5799	-0.32%	4.07%	0.39%	7.92%	NYSE Arca
▼ iShares MSCI Mexico Capped	USD	43.78	-2.65%	-2.08%	-10.27%	-11.18%	NYSE Arca
▼ iShares MSCI Emerging Markets	USD	46.44	-0.77%	2.40%	0.02%	-1.44%	NYSE Arca
▼ Vanquard FTSE Emerging Markets	USD	45.18	-0.98%	2.23%	-0.04%	-1.40%	NYSE Arca
▼ iShares Core MSCI Emerging Markets	USD	56.32	-0.72%	2.47%	0.14%	-1.02%	NYSE Arca
▼ iShares JP Morgan Emerging Markets Bonds	USD	61.32	-0.33%	1.88%	1.14%	0.92%	Cboe
▼ Morgan Stanley Emerging Markets Domestic	USD	7.09	0.00%	0.28%	-4.32%	-6.15%	New York

MILA: Policy Rate



Source: Bloomberg

Capital Market Laboratory Coodinator: Economist Bruno Bellido Anicama
Support: Lith Fernandez, Maria Pia Quijano, Jairo Trujillo, Mario Villar
e-mail: pulsobursatil@ulima.edu.pe
facebook: www.facebook.com/pulsobursatil.ul
Phone number : 4376767 Annexes: 35340 - 35310



PULSO BURSÁTIL

WORLD

Main Indices	Close	1 D*	5 D*	1 M*	YTD*	Market Cap. (US\$ Mill.)
▼ Dow Jones (USA)	24,799.98	-0.06%	-1.80%	2.22%	0.33%	6,866,464
▲ Standard & Poor's 500 (USA)	2,748.80	0.07%	2.19%	3.21%	2.81%	24,206,968
▲ NASDAQ Composite (USA)	7,637.86	0.41%	3.26%	5.94%	10.64%	11,896,248
▼ Stoxx EUROPE 600 (Europe)	386.89	-0.31%	0.63%	-0.04%	-0.59%	8,863,138
▲ DAX (Germany)	12,787.13	0.13%	0.95%	-0.25%	-1.01%	1,001,862
▼ FTSE 100 (United Kingdom)	7,686.80	-0.70%	0.71%	1.59%	-0.01%	1,593,745
▼ CAC 40 (France)	5,460.95	-0.22%	0.42%	-1.00%	2.79%	1,334,322
▼ IBEX 35 (Spain)	9,686.40	-0.66%	1.73%	-4.13%	-3.56%	514,494
▲ MSCI AC Asia Pacific Index	174.54	1.40%	0.91%	1.21%	0.42%	19,132,964
▲ HANG SENG (Hong Kong)	31,093.45	0.31%	2.00%	3.90%	3.92%	3,170,851
▲ SHANGHAI SE Comp. (China)	3,114.21	0.74%	-0.20%	0.75%	-6.83%	5,037,330
▲ NIKKEI 225 (Japan)	22,539.54	0.28%	0.81%	0.30%	-0.99%	3,556,450
▲ BOVESPA (Brazil)	76,641.73	-2.49%	1.71%	-7.79%	0.31%	646,931
▲ MERVAL (Argentina)	30,377.39	4.62%	7.24%	6.39%	1.04%	106,374

*Legend: Variation 1D: 1 Day; 5D: 5 Days; 1M: 1 Month; YTD: Var.% 12/31/17 to date

Equity

Wall Street (Stocks from S&P 500)

Largest gains	Curr.	Price	▲%	Exchange	Largest losses	Curr.	Price	▼%	Exchange
GPS UN	USD	31.18	6.82	New York	RCL UN	USD	102.15	-4.09	New York
KORS UN	USD	63.53	4.90	New York	XRAY UW	USD	42.29	-3.76	NASDAQ GS
SCG UN	USD	36.71	4.86	New York	WYNN UW	USD	176.88	-3.25	NASDAQ GS
KSS UN	USD	74.94	4.72	New York	VRTX UW	USD	145.72	-2.63	NASDAQ GS

Europe (Stocks from STOXX EUROPE 600)

Largest gains	Curr.	Price	▲%	Exchange	Largest losses	Curr.	Price	▼%	Exchange
GNK LN	GBP	612.4	4.47	Londres	CCL LN	GBP	4561	-6.40	Londres
STM IM	EUR	21.18	4.34	Borsa Italiana	CO FP	EUR	35.33	-6.09	EN Paris
AMS SE	CHF	88.58	3.85	SIX Swiss Ex	RBS LN	GBP	266	-5.30	Londres
MONC IM	EUR	41.34	3.77	Borsa Italiana	BTG LN	GBP	585.5	-5.11	Londres

Global Overview:

United States:

The US stock market closed the session with mixed results, the S & P 500 rose slightly on Tuesday, on track for its third consecutive day of gains, while Nasdaq reached an intraday record with the help of the technology and consumer discretionary sectors, while that the rest of the market fought for profit amid US trade tensions. In addition, Amazon.com rose 1.8%, leading the gains in the S & P discretionary consumer index, while Apple rose 0.7%, providing the biggest boost to the technology index. Even so, investors were wary of commercial discussions, and on Tuesday Mexico imposed tariffs on US products ranging from steel to pork and bourbon in response to the metals tariffs of US President Donald Trump. Shares of US packaged food companies fell when Mexico applied tariffs on sensitive agricultural products, from pork to bourbon, as well as certain types of cheeses. In economic data news, the non-manufacturing ISM index reached 58.6 in May, above an expected print of 57.6. A reading above 50 indicates an expansion in the service sector, while a reading less than 50 contraction signals

Europe:

The European stock market closed the session with negative results among its main indices except for the German market, whose DAX index had a positive return of +0.13% at the end of the day. Among the sectors that make up the Stoxx Europe 600 index, the financial sector has been the hardest hit, falling below -1.00% in the session. On the other hand, the technology sector showed the best performance, driven by its peers on Wall Street. Meanwhile, the price of BRENT crude oil remains on the downside since May 23, although the trend it maintains remains bullish in recent months. European technology stocks are strengthened by the broad gains generated by US technology stocks on Monday, which boosted the Nasdaq to its first record close since March 12. On the other hand, leisure and travel shares dragged European performance, for example, the budget operator easyJet PLC was hit with a downgrade while Bernstein Research scored the current risks for purchases of airline shares. In macroeconomic news, the reading of the services activity in the Eurozone was 53.8 points in May versus 53.9 points in April. While the services sector of the United Kingdom was of 54 points, greater than the estimated by Factset of 53.1 points.

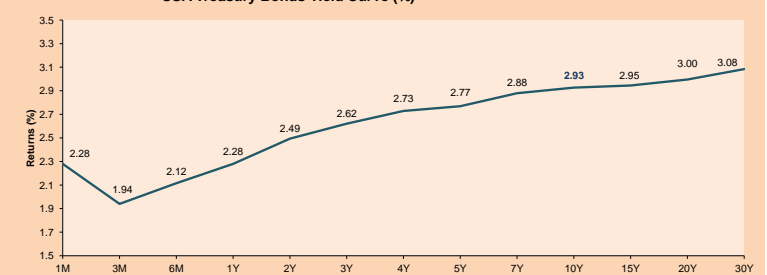
Asia:

The Asian stock market ended the day today with positive results among its main indices. With respect to the Japanese benchmark index, the Nikkei 225, this hill at +0.28%, with which it does not manage to stay above its average of the last 25 days. Shares of Japanese exporters benefited from the depreciation of the yen against the US dollar during the session, reaching 110.01 yen per dollar. For its part, shares of technology companies in Japan benefited after the Nasdaq Composite benchmark index reached its highest point in the last 3 months during the session on Monday. On the other hand, the benchmark index of China, the Shanghai Composite, ended at +0.74%, after a private survey showed that the service sector remained in expansion in May, with which the companies accelerated the hiring since optimism was improved for future growth in 11 months, while the pharmaceutical sector was the most profitable. On the other hand, the Hang Seng index of Hong Kong grew +0.31%, driven like the Shanghai Composite by the private survey.

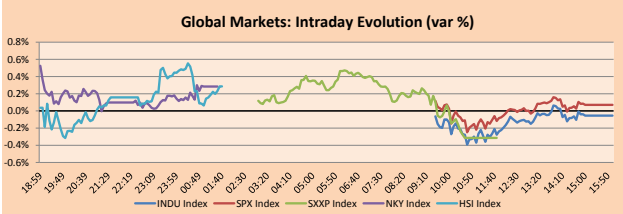
ETFs

ETFs	Curr.	Close	1D	5D	30 D	YTD	Exchange
SPDR S&P 500 ETF TRUST	USD	275.10	0.07%	2.28%	3.41%	3.50%	NYSE Arca
ISHARES MSCI EMERGING MARKET	USD	46.44	-0.77%	2.40%	0.02%	-1.44%	NYSE Arca
ISHARES IBOXX USD HIGH YIELD	USD	85.47	0.12%	0.77%	0.51%	0.03%	NYSE Arca
FINANCIAL SELECT SECTOR SPDR	USD	27.45	-0.44%	1.97%	0.66%	-1.29%	NYSE Arca
VANECK VECTORS GOLD MINERS E	USD	22.44	0.72%	1.31%	-0.93%	-3.44%	NYSE Arca
ISHARES RUSSELL 2000 ETF	USD	165.73	0.62%	2.61%	6.42%	8.96%	NYSE Arca
SPDR GOLD SHARES	USD	122.85	0.39%	-0.28%	-1.36%	-0.65%	NYSE Arca
ISHARES 20+ YEAR TREASURY BO	USD	119.71	0.23%	-1.84%	0.84%	-4.62%	NASDAQ GM
INVESCO QQQ TRUST SERIES 1	USD	174.84	0.31%	3.47%	6.05%	12.43%	NASDAQ GM
ISHARES NASDAQ BIOTECHNOLOGY	USD	109.16	0.03%	1.94%	6.65%	2.24%	NASDAQ GM
ENERGY SELECT SECTOR SPDR	USD	75.54	-0.24%	1.80%	2.29%	5.28%	NYSE Arca
PROSHARES ULTRA VIX ST FUTUR	USD	10.80	-1.73%	-18.24%	-24.53%	5.78%	NYSE Arca
UNITED STATES OIL FUND LP	USD	13.22	-2.76%	-2.15%	-6.17%	10.07%	NYSE Arca
ISHARES MSCI BRAZIL ETF	USD	34.97	-3.98%	-1.02%	-14.18%	-13.55%	NYSE Arca
SPDR S&P OIL & GAS EXP & PR	USD	41.07	-0.24%	0.02%	3.69%	10.67%	NYSE Arca
UTILITIES SELECT SECTOR SPDR	USD	49.55	-0.52%	-1.88%	-3.81%	-5.21%	NYSE Arca
ISHARES US REAL ESTATE ETF	USD	79.05	-0.13%	2.20%	3.01%	-1.61%	NYSE Arca
SPDR S&P BIOTECH ETF	USD	97.17	0.76%	5.08%	11.22%	14.58%	NYSE Arca
ISHARES IBOXX INVESTMENT GRA	USD	114.73	0.07%	-0.78%	0.36%	-4.25%	NYSE Arca
ISHARES JP MORGAN USD EMERGI	USD	108.13	0.16%	-0.68%	-0.05%	-5.27%	NASDAQ GM
REAL ESTATE SELECT SECT SPDR	USD	31.86	-0.50%	1.89%	1.76%	-2.71%	NYSE Arca
ISHARES CHINA LARGE-CAP ETF	USD	48.06	0.19%	4.23%	3.27%	4.09%	NYSE Arca
CONSUMER STAPLES SPDR	USD	49.84	-0.46%	0.14%	0.30%	-11.90%	NYSE Arca
VANECK VECTORS JUNIOR GOLD M	USD	32.96	0.52%	1.01%	-1.76%	-3.43%	NYSE Arca
SPDR B&B BARC HIGH YIELD BND	USD	35.68	0.20%	0.87%	0.39%	-0.64%	NYSE Arca
VANGUARD REAL ESTATE ETF	USD	79.72	-0.26%	2.07%	3.14%	-2.99%	NYSE Arca

USA Treasury Bonds Yield Curve (%)



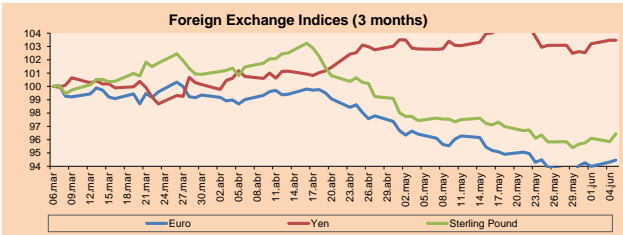
Source: Bloomberg



Source: Bloomberg

Currency	Price	1 D*	5 D*	1 M*	YTD*
▲ Euro	1.1715	0.14%	1.52%	-2.05%	-2.42%
▲ Yen	109.8000	-0.02%	0.95%	0.62%	-2.56%
▲ Sterling Pound	1.3394	0.61%	1.09%	-1.01%	-0.88%
▲ Yuan	6.4061	-0.03%	-0.18%	0.68%	-1.55%
▲ Hong Kong Dollar	7.8473	0.02%	0.02%	-0.03%	0.43%
▲ Brazilian Real	3.8108	1.75%	2.23%	7.98%	15.18%
▲ Argentine Peso	24.9560	-0.05%	0.35%	-14.14%	34.00%

*Legend: Variation 1D: 1 Day; 5D: 5 Days; 1M: 1 Month; YTD: Var.% 12/31/17 to date

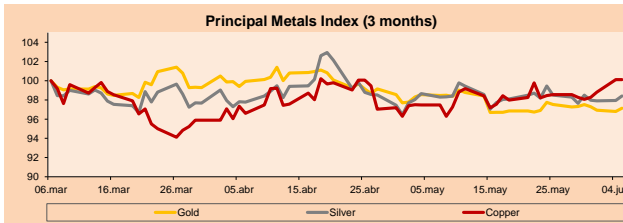


Base: 06/03/18=100

Source: Bloomberg

Commodities	Close	1 D*	5 D*	1 M*	YTD*
▲ Oro (US\$ Oz. T) (LME)	1,296.56	0.36%	-0.18%	-1.43%	-0.50%
▲ Plata (US\$ Oz. T) (LME)	16.49	0.47%	0.78%	-0.26%	-2.64%
▲ Cobre (US\$ TM) (LME)	6,973.25	0.00%	1.87%	2.70%	-3.24%
▲ Zinc (US\$ TM) (LME)	3,144.00	0.00%	1.77%	3.22%	-5.80%
▲ Petróleo WTI (US\$ Barril) (NYM)	65.34	0.91%	-2.08%	-6.09%	9.34%
▲ Estano (US\$ TM) (LME)	20,621.00	0.00%	0.64%	-3.39%	2.61%
▲ Plomo (US\$ TM) (LME)	2,499.50	0.00%	2.65%	7.99%	0.59%
▲ Molibdeno (US\$ TM) (LME)	24,878.00	0.00%	0.00%	-0.01%	59.09%
▲ Azúcar #11 (US\$ Libra) (NYB-ICE)	12.02	1.01%	-3.53%	4.43%	-20.09%
▲ Cacao (US\$ TM) (NYB-ICE)	2,289.00	-2.64%	-8.33%	-17.57%	20.41%
▼ Café Arábica (US\$ TM) (NYB-ICE)	119.45	-1.69%	-0.67%	-2.57%	-8.78%

*Lenda: Variación 1D: 1 Día; 5D: 5 Días; 1M: 1 Mes; YTD: Var.% 31/12/17 a la fecha



Base: 06/03/18=100

Source: Bloomberg

Capital Market Laboratory Coordinator: Economist Bruno Bellido Anicama
Support: Lith Fernandez, Maria Pia Quijano, Jairo Trujillo, Mario Villar
e-mail: pulsobursatil@ulima.edu.pe
facebook: www.facebook.com/pulsobursatil.ul
Phone number : 4376767 Annexes: 35340 - 35310



PULSO BURSÁTIL

LIMA

Stocks

Ticker	Currency	Price	1D*	5D*	30D*	YTD*	Frequency	Volume (US\$)	Beta	Dividend Yield (%)	Price Earning	Market Cap. (M US\$)	Economic Sector*	Index Weight
▼ ALICORC1 PE**	S/.	11.51	-0.78%	-1.20%	0.96%	10.85%	100.00%	1,542,691	0.84	2.09	21.69	3,005.50	Industrial	3.53%
ATACOCB1 PE**	S/.	0.54	0.00%	-6.90%	0.00%	-20.59%	100.00%	4,128	1.61	0.00	-	156.08	Mining	1.02%
- BACKUSI1 PE**	S/.	21.00	0.00%	3.70%	4.48%	17.28%	85.00%	17,185	0.38	4.85	5.14	8,439.67	Industrial	0.82%
▲ BAP PE**	US\$	228.15	0.02%	4.81%	0.25%	11.78%	100.00%	292,241	1.05	4.01	-	18,197.58	Diverse	5.82%
▲ BVN PE**	US\$	16.03	1.07%	3.42%	5.46%	13.74%	95.00%	509,191	1.31	0.36	-	4,418.42	Mining	5.88%
- CASAGRC1 PE**	S/.	5.01	0.00%	-5.47%	-3.65%	-19.06%	100.00%	2,026	0.75	8.06	13.38	129.10	Agricultural	1.31%
▲ CONTINC1 PE**	S/.	4.65	0.22%	3.33%	3.33%	16.08%	100.00%	506,779	0.67	3.36	16.55	6,946.22	Finance	2.85%
- CORAREI1 PE**	S/.	0.83	0.00%	-1.19%	0.00%	18.57%	100.00%	25,606	1.16	5.17	7.12	342.03	Industrial	1.72%
▲ CPACASC1 PE**	S/.	8.05	0.37%	1.13%	-2.42%	-1.23%	100.00%	26,478	0.63	4.35	37.98	1,052.23	Industrial	2.38%
▲ CVERDEC1 PE**	US\$	27.95	1.64%	1.45%	1.64%	-4.01%	90.00%	12,692	1.09	2.04	39.58	9,784.07	Mining	5.25%
- ENGEPEC1 PE**	S/.	1.87	0.00%	0.00%	8.59%	-2.60%	55.00%	491	0.83	0.00	12.00	1,655.04	Public Services	1.44%
- ENDISPC1**	S/.	6.09	0.00%	0.66%	1.86%	11.44%	95.00%	13,885	0.74	0.00	11.34	1,189.65	Public Services	0.98%
▼ FERREY1 PE**	S/.	2.60	-1.14%	-2.26%	0.78%	7.39%	100.00%	400,580	0.91	5.21	9.73	776.03	Diverse	4.90%
▲ GRAMONC1 PE**	S/.	2.13	2.40%	1.43%	-7.39%	13.90%	95.00%	9,759	0.67	0.00	-	430.09	Diverse	4.05%
▼ IFS PE**	US\$	40.70	-3.10%	0.49%	-0.73%	9.23%	90.00%	2,132,185	0.65	3.44	14.91	4,603.61	Diverse	7.22%
▼ INRETC1 PE**	US\$	25.74	-0.04%	5.49%	9.30%	22.57%	100.00%	763,690	1.00	0.00	44.00	2,646.26	Diverse	5.28%
▲ LUSURC1 PE**	S/.	12.50	0.08%	0.00%	2.29%	4.76%	100.00%	52,730	0.46	5.04	13.01	1,862.06	Public Services	1.81%
- MILPOC1 PE**	S/.	5.15	0.00%	-0.96%	-2.83%	11.96%	85.00%	56,857	1.29	16.64	8.02	2,083.59	Mining	1.56%
- MINSUR1 PE**	S/.	1.67	0.00%	-2.91%	-1.76%	-7.22%	90.00%	9,553	1.20	4.13	16.32	1,472.85	Mining	3.09%
- PML PE**	US\$	0.25	0.00%	7.30%	-7.41%	-21.88%	90.00%	2,500	1.64	0.00	-	65.67	Mining	2.12%
- RELAPAC1 PE**	S/.	0.26	0.00%	-2.59%	-6.07%	-15.16%	100.00%	6,625	1.41	0.00	5.21	284.40	Industrial	2.12%
▲ SCCO PE**	US\$	51.00	2.55%	4.72%	-2.92%	8.55%	85.00%	68,904	1.94	1.94	23.56	39,424.45	Mining	2.14%
▼ SIDERC1 PE**	S/.	0.74	-2.63%	-5.13%	10.45%	54.17%	95.00%	112,838	1.36	0.00	6.74	277.97	Industrial	1.43%
▲ TV PE**	US\$	0.85	3.66%	6.25%	-7.61%	-29.17%	95.00%	59,266	1.62	0.00	-	706.04	Mining	2.93%
- UNACEMC1 PE**	S/.	2.90	0.00%	-1.02%	-0.92%	-2.49%	75.00%	4,702	0.64	0.00	19.84	1,460.69	Industrial	3.00%
- VOLCABC1 PE**	S/.	1.01	0.00%	0.00%	-10.62%	-23.48%	100.00%	164,905	1.35	1.35	-	2,548.73	Mining	5.90%

Quantity of shares: 26

Source: Bloomberg, Econometría

* Bloomberg Industry Classification System

** PER is used in the stock market and original currency of the instrument

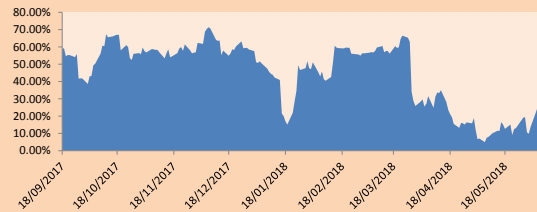
*Legend: Variation 1D: 1 Day; 5D: 5 Days; 1M: 1 Month; YTD: Var.% 12/31/17 to date

Sectorial Indices

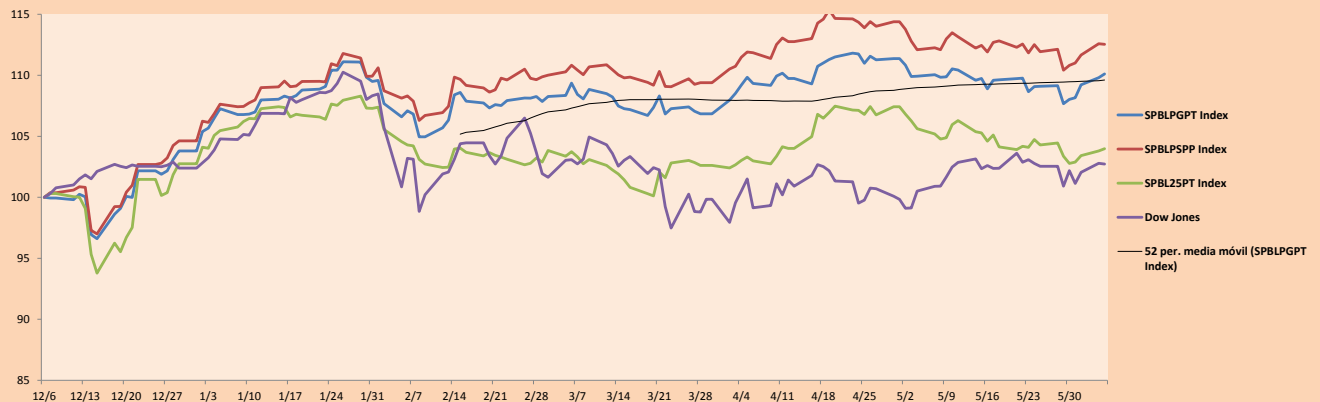
	Close	1D*	5D*	30D*	YTD*	Beta
▲ Mining Index	363.11	1.59%	2.95%	-1.19%	2.15%	1.10
▼ Consumer Index	1,031.78	-0.41%	1.21%	3.65%	14.43%	0.51
▼ Industrial Index	248.90	-0.03%	-0.62%	-1.20%	5.48%	0.72
▼ Banking and Financial Index	1,198.21	-0.17%	4.09%	0.22%	12.07%	1.37
▲ Construction Index	276.77	0.57%	0.32%	-2.13%	4.39%	0.58
▲ Services Index	417.35	0.02%	1.27%	3.10%	0.18%	0.51
▼ Juniors Index	36.31	-0.03%	3.65%	-4.70%	-17.16%	0.75
▲ Electric Index	407.44	0.02%	1.27%	3.10%	0.19%	0.51

*Legend: Variation 1D: 1 Day; 5D: 5 Days; 1M: 1 Month; YTD: Var.% 12/31/17 to date

Correlation Graph of Returns of Mining Index against Metallic Index of London (3 months)



Indices (6 months)



Source: Bloomberg

Capital Market Laboratory Coordinator: Economist Bruno Bellido Anicama

Support: Lith Fernandez, Maria Pia Quijano, Jairo Trujillo, Mario Villar

e-mail: pulsobursatil@ulima.edu.pe

facebook: www.facebook.com/pulsobursatil.u

Phone number : 4376767 Annexes: 35340 - 35310

The content of this document is just for informational purposes. The information and opinions expressed should not be considered as recommendations for future decisions. Under any circumstances, the Capital Market Laboratory of University of Lima will be responsible for the use of the statements in this document.

PULSO BURSÁTIL

SOVEREIGN RATING

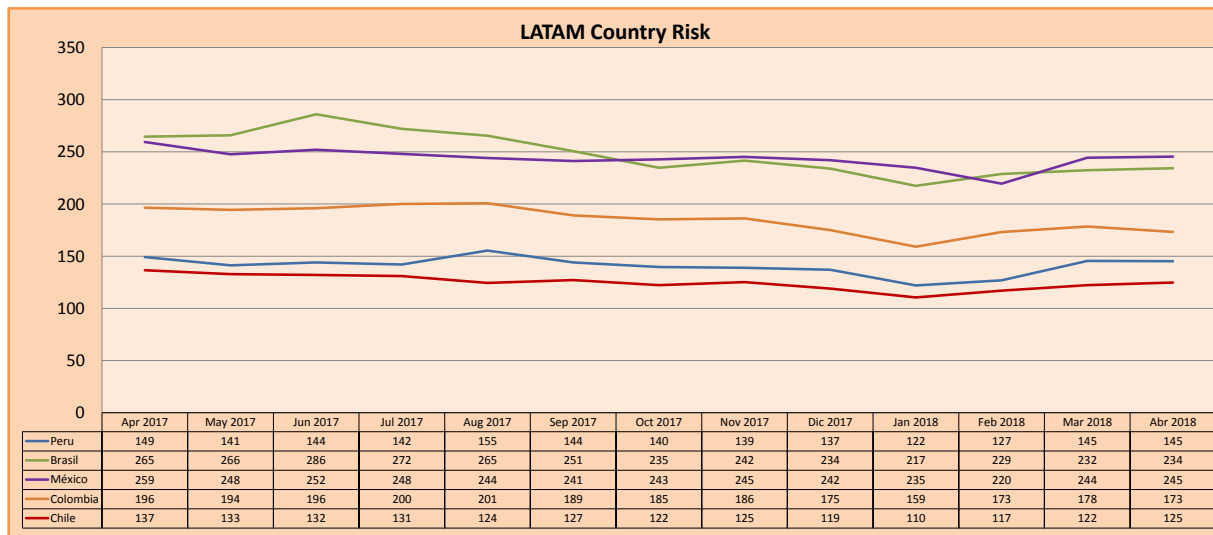
RISK RATINGS

Moody's	S&P	Fitch	
Aaa	AAA	AAA	Prime
Aa1	AA+	AA+	High credit quality
Aa2	AA	AA	
Aa3	AA-	AA-	
A1	A+	A+	Medium-high grade, with low credit risk
A2	A	A	
A3	A-	A-	
Baa1	BBB+	BBB+	Moderate Credit Risk
Baa2	BBB	BBB	
Baa3	BBB-	BBB-	
Ba1	BB+	BB+	It has speculative elements and it is subject to substantial credit risk
Ba2	BB	BB	
Ba3	BB-	BB-	
B1	B+	B+	It is considered speculative and it has high credit risk
B2	B	B	
B3	B-	B-	
Caa1	CCC+		Bad credit conditions and it is subject to high credit risk
Caa2	CCC		
Caa3	CCC-	CCC	
Ca	C		Very close to default or in default
		DDD	
C	D	DD D	

Source: Bloomberg

Latin America Credit Rating			
Clasificadora de riesgo			
Country	Moody's	Fitch	S&P
Peru	A3	BBB+	BBB+
Mexico	A3	BBB+	BBB+
Venezuela	C	C	SD
Brazil	Ba2	BB-	BB-
Colombia	Baa2	BBB	BBB-
Chile	Aa3	A	A+
Argentina	B2	B	B+
Panama	Baa2	BBB	BBB

Source: Bloomberg



Source: Bloomberg

Capital Market Laboratory Coordinator: Economist Bruno Bellido Anicama
Support: Lith Fernandez, Maria Pia Quijano, Jairo Trujillo, Mario Villar
e-mail: pulsobursatil@ulima.edu.pe
facebook: www.facebook.com/pulsobursatil.ul
Phone number : 4376767 Annexes: 35340 - 35310

The content of this document is just for informational purposes. The information and opinions expressed should not be considered as recommendations for future decisions. Under any circumstances, the Capital Market Laboratory of University of Lima will be responsible for the use of the statements in this document.