



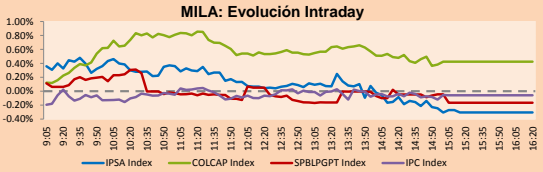
PULSO BURSÁTIL

Lima, June 27, 2018

MILA

Main Indices	Close	1 D	5 D	1 M	YTD	Market Cap. (US\$ bill)
▼ IPSA (Chile)	5,276.44	-0.31%	-2.60%	-5.38%	-5.18%	192.44
▼ IGPA (Chile)	26,796.47	-0.24%	-2.14%	-5.00%	-4.23%	238.20
▲ IGBC (Colombia)	12,250.50	0.86%	1.50%	1.57%	6.73%	111.31
▲ COLCAP (Colombia)	1,550.35	0.42%	1.18%	1.57%	2.42%	115.19
▼ S&P/BVL (Perú)*	20,005.93	-0.17%	-2.15%	-4.70%	0.16%	104.83
▼ S&P/BVL SEL (Perú)	371.55	-0.46%	-2.57%	-5.63%	0.96%	90.83
▼ S&P/BVL LIMA 25	28,900.46	-0.05%	-3.22%	-7.45%	-6.07%	96.73
▼ IPC (México)	46,874.43	-0.07%	0.25%	3.95%	-5.02%	282.09
▲ S&P MILA 40	701.94	0.26%	-1.19%	-4.76%	-3.72%	302.31

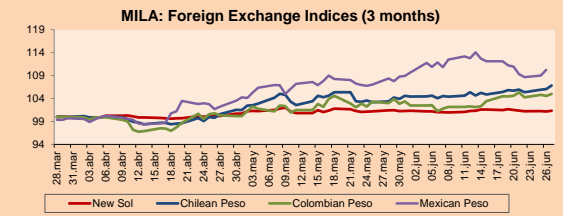
* Market Cap. Of the last price Legend: Variation 1D: 1 day; 5D: 5 days; 1M: 1 Month; YTD: Var%12/31/17 to date



Source: Bloomberg

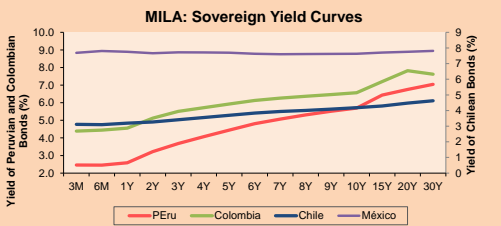
Currency	Price	1D*	5D*	30 D*	YTD*
▲ New Sol (PEN)	3,271.9	0.13%	-0.20%	-0.13%	1.05%
▲ Chilean Peso (CLP)	645.63	0.74%	1.07%	3.37%	4.91%
▲ Colombian Peso (COP)	2,935.07	0.42%	0.40%	1.95%	-1.73%
▲ Mexican Peso (MXN)	20.18	1.12%	-0.89%	2.98%	2.64%

*Legend: Variation 1D: 1 day; 5D: 5 days; 1M: 1 Month; YTD: Var%12/31/17 to date



Base: 28/03/18=100
Source: Bloomberg

Instrument	Currency	Price	Bid Yield (%)	Ask Yield (%)	Duration
PERU 4.125 08/25/2027	USD	102.478	3.83	3.78	7.52
PERU 7.125 03/30/19	USD	103.408	2.64	2.40	0.73
PERU 7.35 07/21/25	USD	122.178	3.78	3.72	5.56
PERU 8.75 11/21/33	USD	146.695	4.53	4.49	9.68
PERU 6.55 03/14/37	USD	125.058	4.57	4.52	11.13
PERU 5.625 11/19/2050	USD	116.285	4.67	4.63	16.03
CHILE 2.25 10/30/22	USD	95.518	3.41	3.33	4.08
CHILE 3.875 08/05/20	USD	101.747	3.08	2.94	1.99
CHILE 3.625 10/30/2042	USD	94.098	4.03	3.98	15.78
COLOM 11.75 02/25/20	USD	113.655	3.26	3.16	1.49
COLOM 11.85 03/09/28	USD	159.314	4.34	4.26	6.54
COLOM 10.375 01/28/33	USD	155.505	5.06	4.89	8.65
COLOM 7.375 09/18/37	USD	124.652	5.34	5.29	11.03
COLOM 6.125 01/18/41	USD	111.462	5.27	5.23	12.46
MEX 4 10/02/23	USD	100.477	3.92	3.87	4.68
MEX5.55 01/45	USD	104.29	5.266	5.231	13.61



Source: Bloomberg

Equity	Exchange	Amt.	Price	▲%
Largest gains				
COLO COLO	Santia.	CLP	316.20	8.63
ELIQA	Santia.	CLP	330.00	7.49
PACIFICO	Santia.	CLP	2800.00	5.66
RELAPAC1	Lima	PEN	0.23	5.63
Per Turnover	Exchange	Amount (US\$)		
HF	Santia.	15,947,214		
SQM-B	Santia.	15,239,402		
CENCOSUD	Santia.	11,775,759		
ECOPETROL	Colomb.	11,156,729		
CMPC	Santia.	7,511,974		

Largest losses	Exchange	Amt.	Price	▼%
PAZRIO	Colomb.	COP	12.10	-12.95
BUENAVC1	Lima	PEN	45.00	-11.76
CAMPOS	Santia.	CLP	35.50	-11.25
VAPORES	Santia.	CLP	22.55	-3.76
Per Volume	Exchange	Volume		
VAPORES	Santia.	114,909,790		
BSANTANDER	Santia.	76,286,073		
CHILE	Santia.	20,827,567		
ORO BLANCO	Santia.	17,892,586		
ECOPETROL	Colomb.	11,116,758		

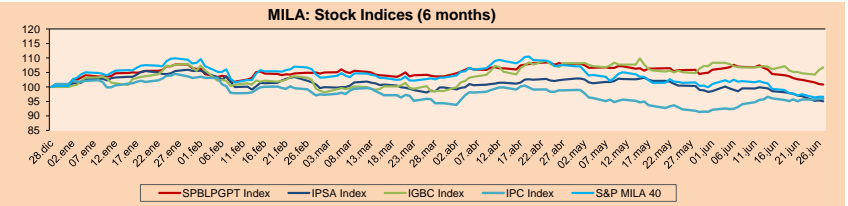
MILA

Peru: The General Index of the BVL of Peru ended today's session with a negative result of -0.17%. The index maintains a cumulative positive annual trend of +0.14% in local currency, while the yield adjusted to foreign currency is -0.89%. Then, the S&P/BVL Peru SEL obtained a negative yield of -0.46%, while the S&P/BVL LIMA 25 decreased -0.05%. The spot PEN reached 5/3.2735.

Chile: The IPSA index ended the day with a negative yield of -0.31%. The sectors of the index with the most negative results were Industrial (-1.46%) and Information Technology (-1.30%). On the other hand, the values with the most bearish results were Compañía Sud Americana de Vapores SA (-3.76%) and Colbún SA (-2.93%).

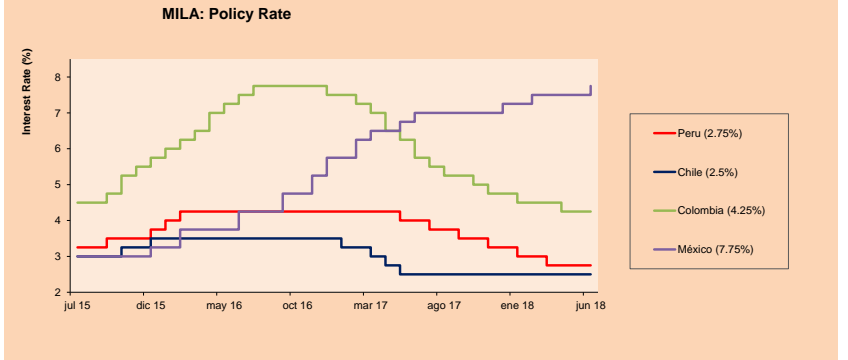
Colombia: The COLCAP index closed the session with positive results of +0.42%. The sectors with upward yields were Energy (+2.83%) and Industrial (+0.36%). In addition, the stocks with the highest yields were Ecopetrol SA (+2.95%) and Grupo Aval Acciones y Valores SA (+2.09%).

Mexico: Mexico's IPC index closed today's session with a negative yield of -0.07%. The sectors of the index that generated the most negative results were Finance (-1.08%) and Materials (-0.69%). Finally, the stocks with the lowest yields were Banco Santander México SA (-3.55%) and Grupo Elektra SAB de CV (-1.72%).



Base: 29/12/17=100
Source: Bloomberg

ETFs	Curr.	Close	1D	5D	30 D	YTD	Exchange
▼ iShares MSCI All Peru Capped Index Fund	USD	39.25	-0.86%	-2.39%	-7.84%	-4.22%	NYSE Arca
▼ iShares MSCI Chile Capped	USD	46.08	-0.80%	-3.29%	-10.30%	-11.66%	Cboe BZX
▼ Global X MSCI Colombia	USD	14,7314	-0.60%	-1.07%	-0.73%	2.04%	NYSE Arca
▼ iShares MSCI Mexico Capped	USD	45.61	-1.28%	1.15%	-0.85%	-7.47%	NYSE Arca
▼ iShares MSCI Emerging Markets	USD	42.33	-1.92%	-3.99%	-8.83%	-10.17%	NYSE Arca
▼ Vanguard FTSE Emerging Markets	USD	41.13	-2.21%	-5.08%	-8.94%	-10.41%	NYSE Arca
▼ iShares Core MSCI Emerging Markets	USD	51.25	-1.95%	-3.99%	-8.82%	-9.93%	NYSE Arca
▼ iShares JP Morgan Emerging Markets Bonds	USD	57.03	-1.37%	-2.80%	-6.86%	-6.14%	Cboe BZX
▼ Morgan Stanley Emerging Markets Domestic	USD	6.9	-0.72%	0.15%	-2.95%	-10.39%	New York



Source: Bloomberg

Capital Market Laboratory Coordinator: Economist Bruno Bellido Anicam
Support: Lith Fernandez, Maria Pia Quijano, Jairo Trujillo, Mario Villar
e-mail: pulsobursatil@ulima.edu.pe
facebook: www.facebook.com/pulsobursatil.ul
Phone number : 4376767 Annexes: 35340 - 35310



PULSO BURSÁTIL

WORLD

Main Indices	Close	1 D*	5 D*	1 M*	YTD*	Market Cap. (US\$ Mill.)
▼ Dow Jones (USA)	24,117.59	-0.68%	-2.19%	-2.57%	-2.43%	6,814,526
▼ Standard & Poor's 500 (USA)	2,699.63	-0.86%	-2.45%	-0.80%	0.97%	23,988,254
▼ NASDAQ Composite (USA)	7,445.09	-1.54%	-4.32%	0.15%	7.85%	11,831,991
▲ Stoxx EUROPE 600 (Europe)	379.97	0.72%	-1.12%	-2.84%	-2.37%	8,848,240
▲ DAX (Germany)	12,348.81	0.93%	-2.73%	-4.56%	-4.41%	982,978
▲ FTSE 100 (United Kingdom)	7,621.69	1.11%	-0.07%	-1.40%	-0.88%	1,618,161
▲ CAC 40 (France)	5,327.20	0.87%	-0.84%	-3.89%	0.28%	1,342,148
▲ IBEX 35 (Spain)	9,658.60	0.22%	-1.33%	-1.71%	-3.84%	523,448
▼ MSCI AC Asia Pacific Index	166.91	-1.03%	-2.26%	-4.78%	-4.95%	18,061,254
▼ HANG SENG (Hong Kong)	28,356.26	-1.82%	-4.51%	-7.91%	-5.22%	2,797,175
▼ SHANGHAI SEC Comp. (China)	2,813.18	-1.30%	-3.52%	-10.27%	-14.94%	4,474,208
▼ NIKKEI 225 (Japan)	22,271.77	-0.31%	-1.26%	-0.93%	-2.17%	3,462,529
▼ BOVESPA (Brazil)	70,609.00	-1.11%	-2.10%	-10.51%	-7.58%	578,055
▼ Merval (Argentina)	25,921.08	-8.96%	-10.98%	-12.62%	-13.78%	96,014

*Legend: Variation 1D: 1 Day; 5D: 5 Days; 1M: 1 Month; YTD: Var.% 12/31/17 to date

Equity

Wall Street (Stocks from S&P 500)

Largest gains	Curr.	Price	▲%	Exchange	Largest losses	Curr.	Price	▼%	Exchange
CXO UN	USD	137.78	4.62	New York	SCG UN	USD	36.79	-4.37	New York
FCX UN	USD	16.9	4.00	New York	AKAM UW	USD	72.46	-4.31	NASDAQ GS
APA UN	USD	45.89	3.89	New York	MU UW	USD	52.26	-4.27	NASDAQ GS
EOG UN	USD	123.93	3.55	New York	RHT UN	USD	132.74	-4.13	New York

Europe (Stocks from STOXX EUROPE 600)

Largest gains	Curr.	Price	▲%	Exchange	Largest losses	Curr.	Price	▼%	Exchange
ERF FP	EUR	485	7.44	EN Paris	UTDI JY	EUR	50.5	-7.98	Xetra
JCP LN	GBP	1140	5.95	Londres	JE LN	GBP	755.2	-7.11	Londres
FTI FP	EUR	27.85	5.41	EN Paris	CEZ CK	CZK	525.5	-5.74	Prague SE
SPM IM	EUR	3.847	5.34	Borsa Italiana	RUI FP	EUR	53.15	-5.09	EN Paris

Global Overview

United States:

The US stock market ended the day with negative results, due to renewed concerns that the Trump administration will crack down on Chinese investment. For his part, the comments of Larry Kudlow restored the hard line of the White House in trade, even after President Donald Trump softened his position. The technology sector bore most of the sales as the White House's intentions to limit Chinese investment remained obscure. On the other hand, Exxon Mobil rebounded as oil advanced towards \$ 73 per barrel, although the Dow Jones Industrial Average pushed its loss in the year beyond 2%. In short, trade dominated the actions of the United States for the third day in a row as investors grappled with the implications of setbacks over and over again with key partners. The president of the Federal Reserve Bank of Atlanta, Raphael Bostic, warned yesterday that the interruption of trade could increase the risk to the economy. Finally, the oil added to its increase caused by the request of the United States of allies to stop imports of Iranian oil.

Europe:

The European market closed with upward results among its main indices despite having a negative start. European stocks rallied today mainly because of US President Donald Trump's announcement to soften tariff measures against China. The Euro Stoxx 600 closed at +0.72%, while the UK FTSE closed at +1.11%. Initially, the sector that led the positive returns was Energy, with oil prices rising. August Brent crude reached +2.28% by the end of the day, while West Texas crude rose +3.40%, reaching \$72.92 per barrel. In other news, the Bank of England announced in a tweet that UK banks would be able to cope with a deep recession, and even with a "disorderly" Brexit, because since 2007 they have tripled their capital in relation to the risk level of their assets. However, the shares of the financial sector had the least positive results in the vast majority of indices, being even the only negative sector (-0.19%) of the Euro Stoxx 50 and, where the Deutsche Bank (-1.69%) led the losses. Finally, consumer confidence in France fell during June, where it reached 97 versus expected 100, its lowest value since August 2016.

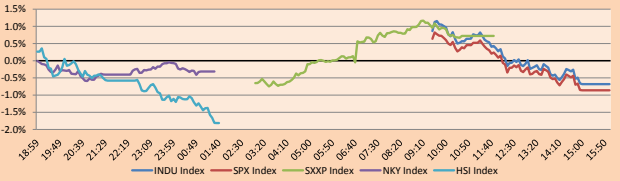
Asia:

The Asian stock market ended the session with negative results among its main indices, caused by commercial tensions and the increase in oil price. The Nik index of Japan fell -0.31% generated by the lag of oil consuming companies that were affected by the rise in price, this was because the United States threatens to impose sanctions on countries that import oil from Iran. On the other hand, this increase in the price favored the oil companies, such as Japan Petroleum Exploration (+4.75%) and the distributor XGTG (+6.35%). Among other companies, the transport company Mitsui fell -1.52%, while the airline operator ANA fell -1.60%. On the other hand, Chinese stocks fell, dragging the SHCOMP index to new two-year lows (-1.10%). Meanwhile, China's largest steel trader submitted an application to the Hong Kong stock exchange to raise \$ 500 million. This would be the third company looking for a quote in Hong Kong after smartphone maker Xiaomi and technology company Meituan. In economic news, the Central Bank of China seemed to intervene to curb the decline of the yuan, after setting the currency at a minimum of six months against the dollar.

ETFs

ETFs	Curr.	Close	1D	5D	30 D	YTD	Exchange
SPDR S&P 500 ETF TRUST	USD	289.35	-0.83%	-2.40%	-1.03%	0.93%	NYSE Arca
ISHARES MSCI EMERGING MARKET	USD	42.33	-1.92%	-3.99%	-8.83%	-10.17%	NYSE Arca
ISHARES IBOX USD HIGH YIELD	USD	85.52	-0.21%	-0.65%	-0.05%	-1.99%	NYSE Arca
FINANCIAL SELECT SECTOR SPDR	USD	26.36	-1.24%	-3.37%	-5.35%	-5.55%	NYSE Arca
VANECK VECTORS GOLD MINERS E	USD	21.81	-0.64%	-0.50%	-2.24%	-6.15%	NYSE Arca
ISHARES RUSSELL 2000 ETF	USD	163.38	-1.60%	-3.88%	1.01%	7.16%	NYSE Arca
SPDR GOLD SHARES	USD	118.58	-0.57%	-1.40%	-3.76%	-4.10%	NYSE Arca
ISHARES 20+ YEAR TREASURY BO	USD	122.11	0.94%	1.83%	2.08%	-3.74%	NASDAQ GM
INVESTCO QQQ TRUST SERIES 1	USD	169.73	-1.36%	-4.24%	0.01%	8.97%	NASDAQ GM
ISHARES NASDAQ BIOTECHNOLOGY	USD	107.34	-2.04%	-5.76%	-0.20%	0.53%	NASDAQ GM
ENERGY SELECT SECTOR SPDR	USD	75.57	1.34%	0.67%	1.33%	4.58%	NYSE Arca
PROSHARES ULTRA VIX ST FUTUR	USD	13.15	8.68%	31.37%	17.62%	28.80%	NYSE Arca
UNITED STATES OIL FUND LP	USD	14.65	2.66%	10.32%	7.09%	21.98%	NYSE Arca
ISHARES MSCI BRAZIL ETF	USD	31.00	-3.58%	-4.73%	-16.78%	-23.36%	NYSE Arca
SPDR S&P OIL & GAS EXP & PR	USD	43.04	1.37%	1.61%	5.28%	15.76%	NYSE Arca
UTILITIES SELECT SECTOR SPDR	USD	51.90	0.48%	3.32%	2.77%	-1.48%	NYSE Arca
ISHARES US REAL ESTATE ETF	USD	79.53	-0.54%	-0.31%	3.13%	-1.83%	NYSE Arca
SPDR S&P BIOTECH ETF	USD	93.62	-3.22%	-7.44%	0.67%	10.31%	NYSE Arca
ISHARES IBOX INVESTMENT GRA	USD	114.66	0.34%	0.62%	-0.62%	-5.68%	NYSE Arca
ISHARES JPM MORGAN US EMERGI	USD	106.55	-0.20%	0.13%	-2.80%	-8.23%	NASDAQ GM
REAL ESTATE SELECT SECT SPDR	USD	32.31	-0.28%	1.48%	3.59%	-1.91%	NYSE Arca
ISHARES CHINA LARGE-CAP ETF	USD	41.99	-2.80%	-6.10%	-10.89%	-9.05%	NYSE Arca
CONSUMER STAPLES SPDR	USD	51.56	-0.21%	0.88%	3.37%	-9.37%	NYSE Arca
VANECK VECTORS JUNIOR GOLD M	USD	32.14	-0.83%	-0.34%	-2.28%	-5.83%	NYSE Arca
SPDR BBG BARC HIGH YIELD BND	USD	35.69	-0.25%	-0.64%	-0.03%	-2.81%	NYSE Arca
VANGUARD REAL ESTATE ETF	USD	80.53	-0.38%	0.94%	3.60%	-2.95%	NYSE Arca

Global Markets: Intraday Evolution (var %)



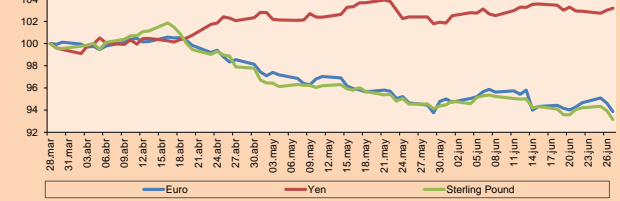
Source: Bloomberg

Currency

Currency	Price	1 D*	5 D*	1 M*	YTD*
▼ Euro	1.1554	-0.81%	-0.16%	-0.61%	-3.76%
▼ Yen	110.2600	0.18%	-0.09%	0.77%	-2.16%
▼ Sterling Pound	1.3113	-0.85%	-0.45%	-1.49%	-2.96%
▲ Yuan	6.6083	0.44%	2.08%	3.27%	1.56%
▼ Hong Kong Dollar	7.8479	-0.02%	0.02%	0.03%	0.43%
▼ Brazilian Real	3.8624	1.59%	2.39%	3.42%	16.74%
▲ Argentine Peso	27.4386	1.30%	-1.18%	-11.06%	47.34%

*Legend: Variation 1D: 1 Day; 5D: 5 Days; 1M: 1 Month; YTD: Var.% 12/31/17 to date

Foreign Exchange Indices (3 months)



Base: 28/03/18=100

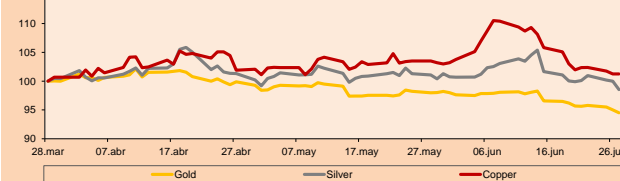
Source: Bloomberg

Commodities

Commodities	Close	1 D*	5 D*	1 M*	YTD*
▼ Oro (US\$ Oz. T) (LME)	1,252.29	-0.54%	-1.22%	-3.53%	-3.90%
▼ Plata (US\$ Oz. T) (LME)	16.06	-1.46%	-1.38%	-2.52%	-5.20%
▼ Cobre (US\$ TM) (LME)	6,715.50	0.00%	-0.71%	-2.18%	-6.82%
▼ Zinc (US\$ TM) (LME)	2,887.25	0.00%	-4.93%	-5.31%	-13.49%
▲ Petróleo WTI (US\$ Barril) (NYM)	72.30	2.51%	10.03%	6.67%	21.68%
▼ Estano (US\$ TM) (LME)	20,180.00	0.00%	-2.72%	-0.02%	0.42%
▼ Plomo (US\$ TM) (LME)	2,401.50	0.00%	0.67%	-1.08%	-3.35%
▼ Molibdeno (US\$ TM) (LME)	24,882.00	0.00%	0.00%	0.00%	59.11%
▼ Azúcar #11 (US\$ Libra) (NYB-ICE)	12.05	-3.21%	-1.15%	-5.56%	-20.78%
▼ Cacao (US\$ TM) (NYB-ICE)	2,380.00	-3.72%	-6.78%	-8.71%	24.22%
▼ Café Arábica (US\$ TM) (NYB-ICE)	117.45	-0.21%	0.69%	-4.24%	-11.89%

*Lenda: Variación 1D: 1 Día; 5D: 5 Días; 1M: 1 Mes; YTD: Var.% 31/12/17 a la fecha

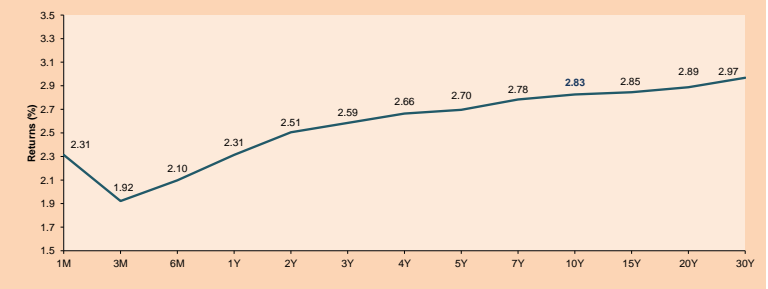
Principal Metals Index (3 months)



Base: 28/03/18=100

Source: Bloomberg

USA Treasury Bonds Yield Curve (%)



Source: Bloomberg

Capital Market Laboratory Coordinator: Economist Bruno Bellido Anicama
Support: Lith Fernandez, Maria Pia Quijano, Jairo Trujillo, Mario Villar
e-mail: pulsobursatil@ulima.edu.pe
facebook: www.facebook.com/pulsobursatil.ulima
Phone number : 4376767 Annexes: 35340 - 35310

PULSO BURSÁTIL

LIMA

Stocks

Ticker	Currency	Price	1D*	5D*	30D*	YTD*	Frequency	Volume (US\$)	Beta	Dividend Yield (%)	Price Earning	Market Cap. (M US\$)	Economic Sector*	Index Weight
▼ ALICORC1 PE**	S/.	11.22	-1.58%	-3.28%	-4.51%	5.85%	100.00%	189,676	0.63	2.14	21.14	2,927.09	Industrial	3.53%
▲ ATACOBC1 PE**	S/.	0.41	1.23%	-12.95%	-26.79%	-39.71%	100.00%	13,253	1.13	0.00	-	118.39	Mining	1.02%
- BACKUSI1 PE**	S/.	21.50	0.00%	-0.19%	6.17%	16.78%	70.00%	657	0.36	0.00	5.26	8,517.72	Industrial	0.82%
▼ BAP PE**	US\$	222.00	0.23%	-0.05%	-0.89%	6.73%	100.00%	2,797,647	1.05	4.12	-	17,707.05	Diverse	5.82%
▼ BVN PE**	US\$	13.83	-0.14%	-4.62%	-11.06%	-2.05%	95.00%	801,678	1.58	0.42	-	3,812.03	Mining	5.88%
▼ CASAGRC1 PE**	S/.	4.20	-1.18%	-16.00%	-20.75%	-32.15%	100.00%	1,284	0.65	9.61	11.22	108.13	Agricultural	1.31%
▲ CONTINC1 PE**	S/.	4.25	1.19%	0.47%	2.93%	12.58%	100.00%	139,422	0.55	3.34	16.63	6,973.49	Finance	2.85%
▲ CORAREI1 PE**	S/.	0.78	2.63%	1.30%	-7.14%	8.33%	100.00%	85,447	0.77	5.50	6.69	330.01	Industrial	1.72%
▼ CPACASC1 PE**	S/.	7.82	-1.64%	0.26%	-4.17%	-4.05%	100.00%	105,179	0.46	4.48	36.90	1,021.23	Industrial	2.38%
▼ CVERDEC1 PE**	US\$	25.00	-0.04%	-3.85%	-10.71%	-15.82%	95.00%	239,508	0.88	2.29	35.40	8,751.40	Mining	5.25%
▲ ENGEPEC1 PE**	S/.	1.85	0.54%	0.00%	-1.07%	-6.57%	60.00%	16,971	0.80	4.13	11.87	1,635.84	Public Services	1.44%
- ENDISPC1**	S/.	5.80	0.00%	-1.69%	-4.13%	2.84%	70.00%	20,749	0.74	0.00	10.80	1,131.96	Public Services	0.98%
▼ FERREYC1 PE**	S/.	2.42	0.00%	1.26%	-8.68%	-5.10%	100.00%	315,081	0.68	5.60	8.95	721.65	Diverse	4.90%
- GRAMONC1 PE**	S/.	2.08	0.00%	1.46%	-4.15%	11.23%	95.00%	1,926	0.16	0.00	-	419.61	Diverse	4.05%
▼ IFS PE**	US\$	40.35	-0.62%	-3.47%	-1.59%	4.81%	90.00%	5,785,018	0.53	3.47	14.81	4,564.02	Diverse	7.22%
- INRETC1 PE**	US\$	24.70	0.00%	-0.40%	0.82%	17.62%	100.00%	232,180	1.00	0.00	42.29	2,539.34	Diverse	5.28%
▲ LUSURC1 PE**	S/.	11.95	0.42%	0.00%	-4.40%	-0.83%	95.00%	14,493	0.37	5.52	12.44	1,778.50	Public Services	1.81%
▲ MILPOC1 PE**	S/.	4.45	1.60%	-7.29%	-16.04%	-3.26%	80.00%	164,482	1.27	19.26	6.92	1,800.47	Mining	1.56%
▲ MINSUR1 PE**	S/.	1.56	0.65%	-2.50%	-10.86%	-13.33%	95.00%	79,344	1.24	4.42	15.23	1,374.58	Mining	3.09%
▼ PML PE**	US\$	0.20	-0.50%	-5.24%	-19.76%	-37.81%	70.00%	7,960	1.75	0.00	-	52.27	Mining	2.12%
▲ RELAPAC1 PE**	S/.	0.23	5.63%	-2.17%	-17.58%	-27.42%	100.00%	66,912	1.39	0.00	4.45	243.09	Industrial	2.12%
▲ SCCO PE**	US\$	46.15	-1.70%	-1.81%	-7.72%	-2.96%	95.00%	38,316	2.15	21.32	35.675.27	Mining	2.14%	
▼ SIDERC1 PE**	S/.	0.70	-1.41%	4.48%	-7.89%	45.83%	100.00%	18,917	1.36	0.00	6.38	262.70	Industrial	1.43%
▼ TV PE**	US\$	0.67	-2.90%	-18.29%	-16.25%	-44.17%	95.00%	312,577	1.63	0.00	-	556.52	Mining	2.93%
- UNACEMC1 PE**	S/.	2.85	0.00%	2.52%	-2.73%	-5.00%	85.00%	309,224	0.45	1.82	19.50	1,434.19	Industrial	3.00%
▼ VOLCABC1 PE**	S/.	0.88	-1.12%	-12.00%	-13.73%	-33.33%	100.00%	356,588	1.23	1.55	-	2,449.32	Mining	5.90%

Quantity of shares: 26

Source: Bloomberg, Económática

* Bloomberg Industry Classification System

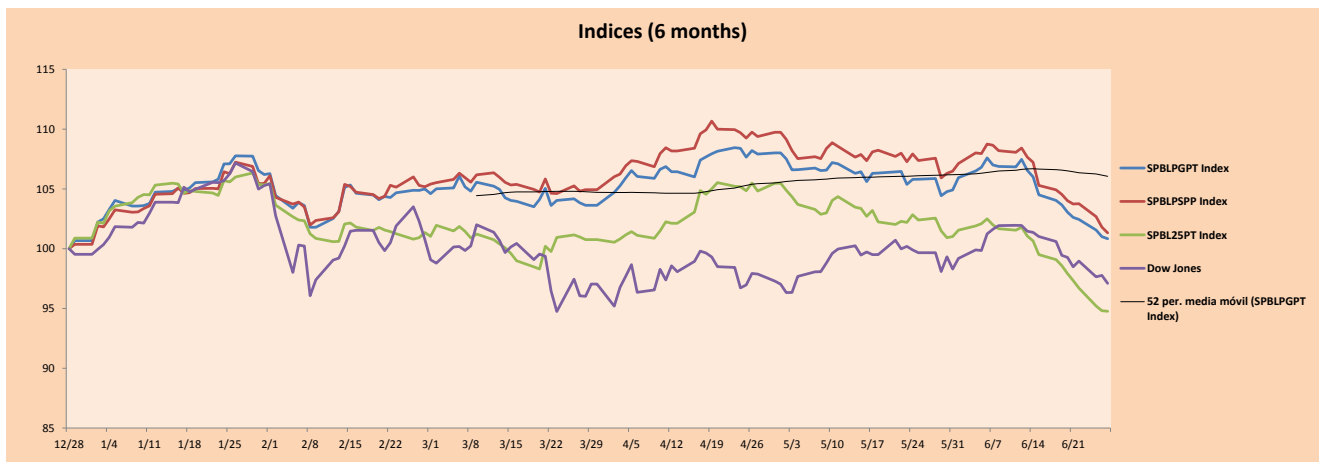
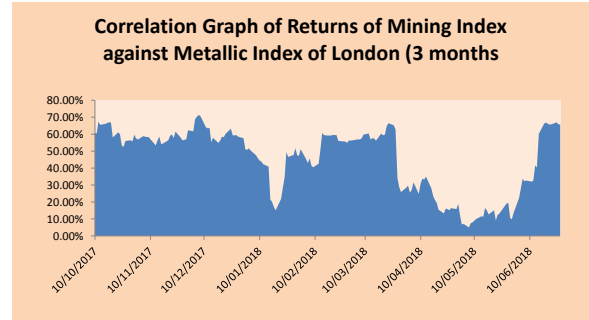
** PER is used in the stock market and original currency of the instrument

*Legend: Variation 1D: 1 Day; 5D: 5 Days; 1M: 1 Month; YTD: Var.% 12/31/17 to date

Sectorial Indices

	Close	1D*	5D*	30D*	YTD*	Beta
▼ Mining Index	322.54	-0.70%	-4.48%	-9.85%	-9.27%	1.43
▼ Consumer Index	1,007.26	-0.77%	-2.18%	-1.74%	-11.71%	0.27
▼ Industrial Index	238.62	-0.24%	1.08%	-5.51%	-1.13%	0.31
▲ Banking and Financial Index	1,171.29	0.38%	-0.34%	-0.85%	9.55%	1.34
▼ Construction Index	269.74	-0.53%	1.19%	-3.67%	1.74%	0.15
▲ Services Index	405.61	0.49%	-0.56%	-1.54%	-2.63%	0.37
▲ Juniors Index	32.19	4.24%	-1.29%	-12.00%	-26.56%	0.61
▲ Electric Index	395.98	0.48%	-0.56%	-1.53%	-2.63%	0.37

*Legend: Variation 1D: 1 Day; 5D: 5 Days; 1M: 1 Month; YTD: Var.% 12/31/17 to date



Capital Market Laboratory Coordinator: Economist Bruno Bellido Anicama
Support: Lith Fernandez, Maria Pia Quijano, Jairo Trujillo, Mario Villar
e-mail: pulsobursatil@ulima.edu.pe
facebook: www.facebook.com/pulsobursatil.ul
Phone number : 4376767 Annexes: 35340 - 35310

The content of this document is just for informational purposes. The information and opinions expressed should not be consider as recommendations for future decisions. Under any circumstances, the Capital Market Laboratory of University of Lima will be responsible for the use of the statements in this document.

PULSO BURSÁTIL

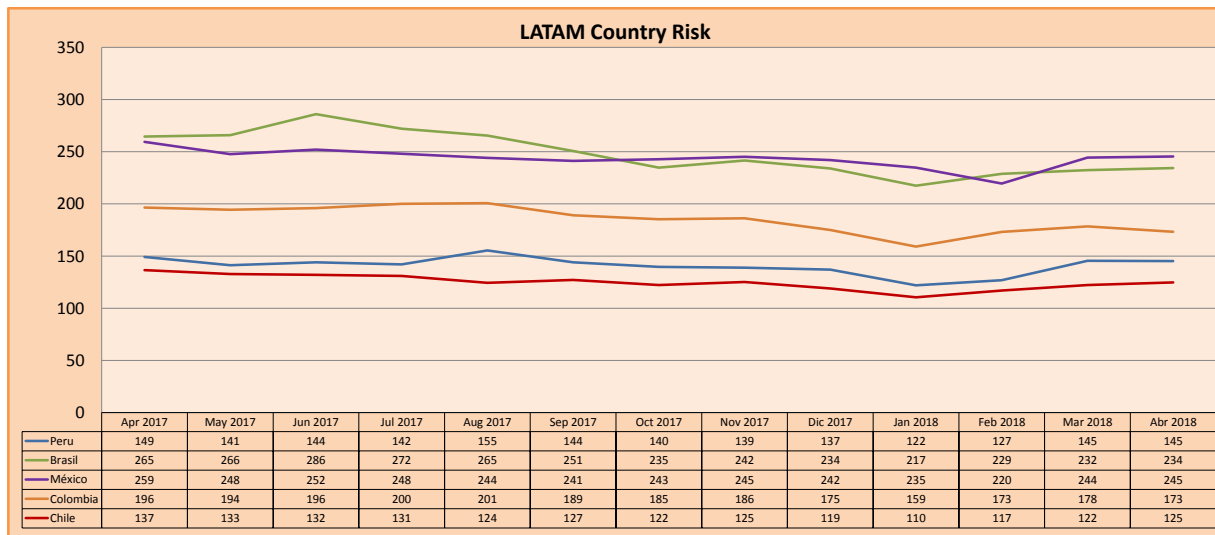
SOVEREIGN RATING

RISK RATINGS			
Moody's	S&P	Fitch	
Aaa	AAA	AAA	Prime
Aa1	AA+	AA+	High credit quality
Aa2	AA	AA	
Aa3	AA-	AA-	
A1	A+	A+	Medium-high grade, with low credit risk
A2	A	A	
A3	A-	A-	
Baa1	BBB+	BBB+	Moderate Credit Risk
Baa2	BBB	BBB	
Baa3	BBB-	BBB-	
Ba1	BB+	BB+	It has speculative elements and it is subject to substantial credit risk
Ba2	BB	BB	
Ba3	BB-	BB-	
B1	B+	B+	It is considered speculative and it has high credit risk
B2	B	B	
B3	B-	B-	
Caa1	CCC+	CCC	Bad credit conditions and it is subject to high credit risk
Caa2	CCC	CCC	
Caa3	CCC-	CCC	
Ca	CC	C	Very close to default or in default
C	D	DD	
		D	

Source: Bloomberg

Latin America Credit Rating			
Clasificadora de riesgo			
Country	Moody's	Fitch	S&P
Peru	A3	BBB+	BBB+
Mexico	A3	BBB+	BBB+
Venezuela	C	C	SD
Brazil	Ba2	BB-	BB-
Colombia	Baa2	BBB	BBB-
Chile	Aa3	A	A+
Argentina	B2	B	B+
Panama	Baa2	BBB	BBB

Source: Bloomberg



Source: Bloomberg

Capital Market Laboratory Coordinator: Economist Bruno Bellido Anicama
 Support: Lith Fernandez, Maria Pia Quijano, Jairo Trujillo, Mario Villar
 e-mail: pulsobursatil@ulima.edu.pe
 facebook: www.facebook.com/pulsobursatil.ul
 Phone number : 4376767 Annexes: 35340 - 35310

The content of this document is just for informational purposes. The information and opinions expressed should not be considered as recommendations for future decisions. Under any circumstances, the Capital Market Laboratory of University of Lima will be responsible for the use of the statements in this document.