

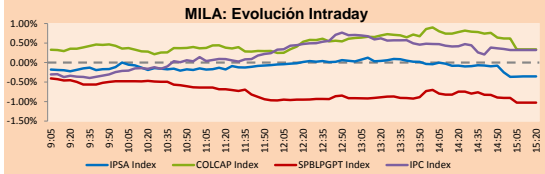
# PULSO BURSÁTIL

Lima, June 28, 2018

## MILA

Main Indices	Close	1 D	5 D	1 M	YTD	Market Cap. (US\$ bill)
▼ IPSA (Chile)	5,257.68	-0.36%	-2.37%	-5.61%	-5.52%	190.77
▼ IGPA (Chile)	26,649.35	-0.55%	-2.15%	-4.45%	-4.76%	236.24
▲ IGBC (Colombia)	12,316.19	0.54%	2.04%	2.43%	7.30%	112.00
▲ COLCAP (Colombia)	1,555.61	0.34%	1.38%	2.04%	2.77%	116.00
▲ S&P/BVL (Perú)*	19,800.26	-1.03%	-2.75%	-5.73%	-0.87%	104.12
▲ S&P/BVL SEL (Perú)	367.51	-1.09%	-3.38%	-6.83%	-0.14%	89.80
▼ S&P/BVL LIMA 25	28,379.32	-1.80%	-4.40%	-9.26%	-7.76%	96.04
▲ IPC (México)	47,031.27	0.33%	1.24%	4.86%	-4.71%	288.52
▼ S&P MILA 40	697.87	-0.58%	-1.10%	-5.40%	-4.28%	300.90

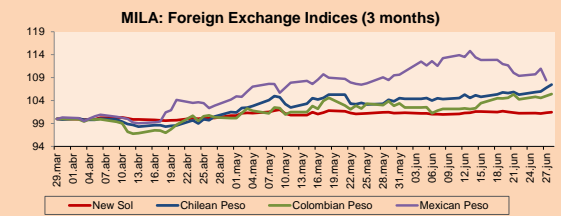
\* Market Cap. Of the last price      \*Legend: Variation 1D: 1 day; 5D: 5 days; 1M: 1 Month; YTD: Var%12/31/17 to date



Source: Bloomberg

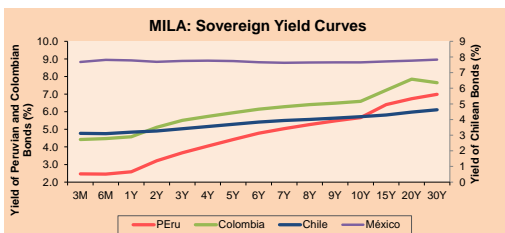
Currency	Price	1D*	5D*	30 D*	YTD*
▲ New Sol (PEN)	3,2764	0.14%	0.06%	-0.02%	1.19%
▲ Chilean Peso (CLP)	649.92	0.66%	1.51%	3.18%	5.60%
▲ Colombian Peso (COP)	2,946.42	0.39%	0.08%	1.50%	-1.35%
▼ Mexican Peso (MXN)	19.72	-2.29%	-2.92%	-0.61%	0.30%

\*Legend: Variation 1D: 1 day; 5D: 5 days; 1M: 1 Month; YTD: Var%12/31/17 to date



Base: 29/03/18=100  
Source: Bloomberg

Instrument	Currency	Price	Bid Yield (%)	Ask Yield (%)	Duration
PERU 4.125 08/25/2027	USD	102.607	3.81	3.76	7.52
PERU 7.125 03/30/19	USD	103.412	2.59	2.34	0.72
PERU 7.35 07/21/25	USD	122.245	3.76	3.71	5.56
PERU 8.75 11/21/33	USD	147	4.51	4.47	9.67
PERU 6.55 03/14/37	USD	125.372	4.55	4.50	11.13
PERU 5.625 10/30/22	USD	116.603	4.65	4.61	16.01
CHILE 2.25 10/30/22	USD	95.527	3.41	3.33	4.08
CHILE 3.875 08/05/20	USD	101.772	3.06	2.93	1.98
CHILE 3.625 10/30/2042	USD	93.6	4.06	4.03	15.75
COLOM 11.75 02/25/20	USD	113.68	3.22	3.09	1.49
COLOM 11.85 03/09/28	USD	158.567	4.41	4.33	6.54
COLOM 10.375 01/28/33	USD	152.378	5.26	5.15	8.65
COLOM 7.375 09/18/37	USD	125.18	5.30	5.25	11.03
COLOM 6.125 01/18/41	USD	111.79	5.24	5.21	12.45
MEX 4 10/02/23	USD	100.548	3.90	3.86	4.67
MEX5.55 01/45	USD	104.923	5.221	5.19	13.8



Source: Bloomberg

Equity	Exchange	Amt.	Price	▲%
Largest gains				
VALSIMESA	Colomb.	COP	4500.00	22.95
VENTANAS	Santia.	CLP	164.50	4.11
BICECORP	Santia.	CLP	13500.00	3.85
CNEC	Colomb.	COP	9530.00	3.59

Per Turnover	Exchange	Amount (US\$)
SQM-B	Santia.	13,587,389
ECOPETROL	Colomb.	8,668,798
PFBOLOM	Colomb.	8,424,515
BSANTANDER	Santia.	8,358,264
FALABELLA	Santia.	6,905,895

Largest losses	Exchange	Amt.	Price	▼%
ALT	Lima	USD	0.01	-47.37
BVLAC1	Lima	PEN	2.75	-12.42
ESVAL-C	Santia.	CLP	0.02	-8.33
VOLCABC1	Lima	PEN	0.81	-7.95

Per Volume	Exchange	Volume
NORTEGRAN	Santia.	150,500,000
VAPORES	Santia.	116,577,073
BSANTANDER	Santia.	106,663,722
ORO BLANCO	Santia.	86,046,059
ESVAL-C	Santia.	71,646,927

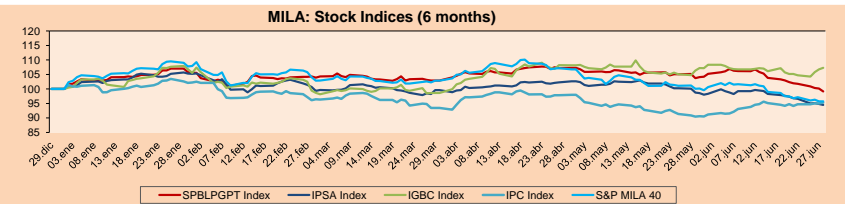
## MILA

**Peru:** The General Index of the BVL of Peru ended today's session with a negative result of -0.87%. The index maintains an accumulated annual negative trend of -0.87% in local currency, while the adjusted return to foreign currency is -2.04%. Then, the S&P/BVL Peru SEL obtained a negative yield of -1.09%, while the S&P/BVL LIMA 25 decreased -1.80%. The spot PEN reached S/3.2765.

**Chile:** The IPSA index ended the day with a negative return of -0.36%. The sectors of the index with the most negative results were Information Technology (-1.56%) and Energy (-1.04%). On the other hand, the values with the most bearish results were Inversiones Aguas Metropolitanas SA (-3.42%) and Besalco SA (-2.70%).

**Colombia:** The COLCAP index closed the session with positive results of +0.34%. The sectors with upward yields were Finance (+0.80%) and Energy (+0.58%). In addition, the stocks with the highest yields were Canacol Energy Ltd (+3.59%) and BanColombia SA (+2.25%).

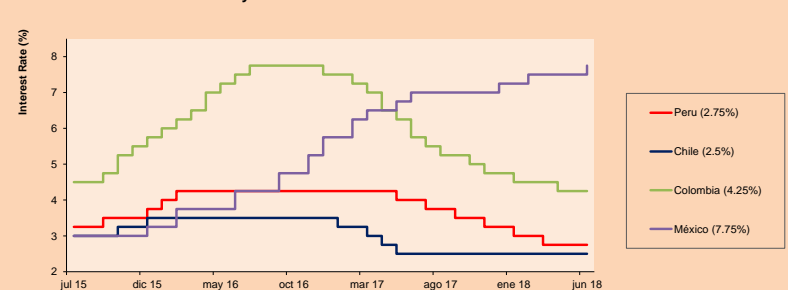
**Mexico:** Mexico's IPC index closed today's session with a positive return of +0.33%. The sectors of the index that generated the most positive results were Finance (+0.82%) and Products of first necessity (+0.49%). Finally, the stocks with the highest yields were Kimberly-Clark de México SAB de CV (+3.37%) and Grupo Elektra SAB de CV (+3.36%).



Base: 01/01/18=100  
Source: Bloomberg

ETFs	Curr.	Close	1D	5D	30 D	YTD	Exchange
▼ iShares MSCI All Peru Capped Index Fund	USD	38.88	-0.94%	-2.29%	-6.40%	-4.23%	NYSE Arca
▼ iShares MSCI Chile Capped	USD	45.76	-0.69%	-2.93%	-7.03%	-10.60%	Cboe BZX
▲ Global X MSCI Colombia	USD	14.75	0.13%	0.34%	-0.70%	2.96%	NYSE Arca
▲ iShares MSCI Mexico Capped	USD	46.92	2.87%	4.31%	6.29%	-3.58%	NYSE Arca
▲ iShares MSCI Emerging Markets	USD	42.69	0.85%	-1.79%	-5.25%	-8.81%	NYSE Arca
▲ Vanguard FTSE Emerging Markets	USD	41.52	0.95%	-2.18%	-5.39%	-8.80%	NYSE Arca
▲ iShares Core MSCI Emerging Markets	USD	51.63	0.74%	-1.94%	-5.29%	-8.52%	NYSE Arca
▼ iShares JP Morgan Emerging Markets Bonds	USD	57.19	0.28%	-1.21%	-4.16%	-5.06%	Cboe BZX
▼ Morgan Stanley Emerging Markets Domestic	USD	6.73	-0.30%	-0.44%	-2.69%	-8.94%	New York

## MILA: Policy Rate



Source: Bloomberg

Capital Market Laboratory Coordinator: Economist Bruno Bellido Anicama  
Support: Lith Fernandez, Maria Pia Quijano, Jairo Trujillo, Mario Villar  
e-mail: pulsobursatil@ulima.edu.pe  
facebook: www.facebook.com/pulsobursatil.ul  
Phone number : 4376767 Annexes: 35340 - 35310





# PULSO BURSÁTIL

## LIMA

### Stocks

Ticker	Currency	Price	1D*	5D*	30D*	YTD*	Frequency	Volume (US\$)	Beta	Dividend Yield (%)	Price Earning	Market Cap. (M US\$)	Economic Sector*	Index Weight
▼ ALICORC1 PE**	S/.	11.05	-1.52%	-4.41%	-5.15%	6.42%	100.00%	463,493	0.64	2.17	20.82	2,879.12	Industrial	3.53%
▼ ATACOBIC1 PE**	S/.	0.39	-4.88%	-13.33%	-32.76%	-42.65%	100.00%	78,624	1.10	0.00	-	112.46	Mining	1.02%
- BACKUSH1 PE**	S/.	21.50	0.00%	-6.52%	6.17%	20.07%	70.00%	912	0.36	0.00	5.26	8,506.02	Industrial	0.82%
▼ BAP PE**	US\$	221.00	-0.45%	0.64%	1.53%	8.28%	100.00%	391,398	1.05	4.14	-	17,627.29	Diverse	5.82%
▼ BVN PE**	US\$	13.70	-0.94%	-6.55%	-11.61%	-2.80%	95.00%	115,388	1.59	0.42	-	3,776.19	Mining	5.88%
▼ CASAGRC1 PE**	S/.	4.18	-0.48%	-15.56%	-21.13%	-32.47%	100.00%	26,836	0.64	9.66	11.16	107.47	Agricultural	1.31%
▼ CONTINC1 PE**	S/.	4.17	-1.88%	-0.71%	1.88%	14.43%	100.00%	170,138	0.55	3.41	16.31	6,832.83	Finance	2.85%
▼ CORAREI1 PE**	S/.	0.77	-1.28%	2.67%	-8.33%	10.00%	100.00%	24,128	0.73	5.57	6.60	328.95	Industrial	1.72%
- CPACASC1 PE**	S/.	7.82	0.00%	-0.38%	-1.76%	-4.05%	100.00%	146,304	0.45	4.48	36.90	1,019.95	Industrial	2.38%
▼ CVERDEC1 PE**	US\$	24.30	-2.80%	-6.54%	-11.80%	-16.54%	95.00%	109,305	0.88	2.35	34.41	8,506.36	Mining	5.25%
- ENGEPEC1 PE**	S/.	1.85	0.00%	0.00%	-1.07%	-3.65%	60.00%	8,752	0.80	4.13	11.87	1,633.59	Public Services	1.44%
▼ ENDISPC1**	S/.	5.70	-1.72%	-4.04%	-5.79%	4.30%	70.00%	40,934	0.74	3.78	10.61	1,110.92	Public Services	0.98%
▼ FERREYC1 PE**	S/.	2.35	-2.89%	-2.08%	-11.65%	-2.93%	100.00%	238,989	0.66	5.76	8.69	699.81	Diverse	4.90%
- GRAMONC1 PE**	S/.	2.08	0.00%	1.46%	-0.95%	11.23%	95.00%	475,885	0.20	0.00	-	419.03	Diverse	4.05%
▼ IFS PE**	US\$	39.95	-0.99%	-3.97%	-1.36%	7.22%	90.00%	450,157	0.51	3.50	14.68	4,518.78	Diverse	7.22%
▲ INRETC1 PE**	US\$	25.00	1.21%	0.00%	2.46%	19.05%	100.00%	209,926	1.00	0.00	42.84	2,570.18	Diverse	5.28%
▲ LUSURC1 PE**	S/.	11.98	0.25%	0.25%	-2.58%	2.06%	95.00%	117,862	0.36	5.51	12.47	1,780.51	Public Services	1.81%
▼ MILPOC1 PE**	S/.	4.36	-2.02%	-9.17%	-16.15%	-5.22%	80.00%	104,513	1.27	19.66	6.77	1,762.02	Mining	1.56%
▼ MINSUR1 PE**	S/.	1.55	-0.64%	-2.52%	-9.88%	-13.89%	95.00%	116,320	1.24	4.45	15.11	1,363.89	Mining	3.09%
▼ PML PE**	US\$	0.20	-0.50%	-5.71%	-15.02%	-38.13%	70.00%	1,485	1.75	0.00	-	52.01	Mining	2.12%
▼ RELAPAC1 PE**	S/.	0.21	-6.67%	-8.70%	-22.22%	-32.26%	100.00%	160,431	1.30	0.00	4.15	226.57	Industrial	2.12%
▼ SCCO PE**	US\$	45.85	-0.65%	-1.40%	-5.85%	-2.41%	95.00%	301,367		2.16	21.18	35,443.35	Mining	2.14%
- SIDERC1 PE**	S/.	0.70	0.00%	2.94%	-10.26%	45.83%	100.00%	122,061	1.36	0.00	6.38	262.34	Industrial	1.43%
▼ TV PE**	US\$	0.65	-2.99%	-17.72%	-18.75%	-45.83%	95.00%	134,247	1.63	0.00	-	539.91	Mining	2.93%
- UNACEMC1 PE**	S/.	2.85	0.00%	1.79%	-2.73%	-4.17%	90.00%	215,224	0.45	1.82	19.50	1,432.22	Industrial	3.00%
▼ VOLCABC1 PE**	S/.	0.81	-7.95%	-16.49%	-19.80%	-38.64%	100.00%	1,061,170	1.23	1.69	-	2,393.76	Mining	5.90%

Quantity of shares: 26

Source: Bloomberg, Económática

\* Bloomberg Industry Classification System

\*\* PER is used in the stock market and original currency of the instrument

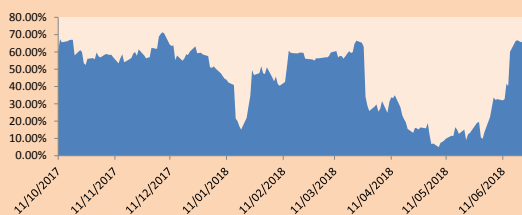
\*Legend: Variation 1D: 1 Day; 5D: 5 Days; 1M: 1 Month; YTD: Var.% 12/31/17 to date

### Sectorial Indices

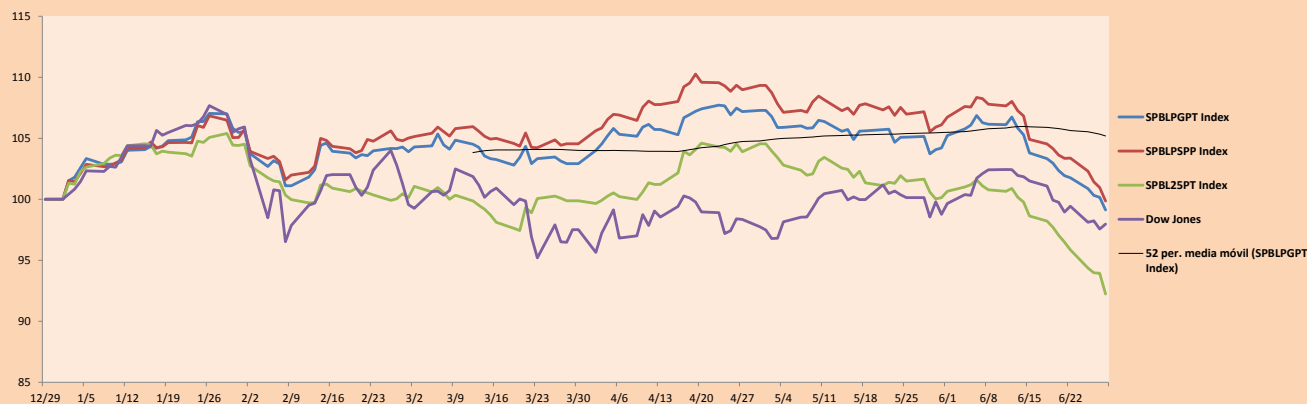
	Close	1D*	5D*	30D*	YTD*	Beta
▼ Mining Index	317.89	-1.44%	-5.27%	-9.87%	-10.57%	1.43
▼ Consumer Index	1,002.82	-0.44%	-3.46%	-1.64%	11.22%	0.27
▼ Industrial Index	236.08	-1.06%	-0.32%	-5.74%	0.05%	0.31
▼ Banking and Financial Index	1,164.91	-0.54%	0.26%	1.19%	8.96%	1.34
▼ Construction Index	269.65	-0.03%	0.84%	-2.26%	1.70%	0.14
▼ Services Index	404.52	-0.27%	-0.96%	-1.85%	-2.90%	0.31
▼ Juniors Index	32.12	-0.22%	-2.87%	-8.31%	-26.72%	0.54
▼ Electric Index	394.91	-0.27%	-0.96%	-1.85%	-2.89%	0.31

\*Legend: Variation 1D: 1 Day; 5D: 5 Days; 1M: 1 Month; YTD: Var.% 12/31/17 to date

Correlation Graph of Returns of Mining Index against Metallic Index of London (3 months)



Indices (6 months)



Source: Bloomberg

Capital Market Laboratory Coordinator: Economist Bruno Bellido Anicama

Support: Lith Fernandez, Maria Pia Quijano, Jairo Trujillo, Mario Villar

e-mail: pulsobursatil@ulima.edu.pe

facebook: www.facebook.com/pulsobursatil.ul

Phone number : 4376767 Annexes: 35340 - 35310

The content of this document is just for informational purposes. The information and opinions expressed should not be considered as recommendations for future decisions. Under any circumstances, the Capital Market Laboratory of University of Lima will be responsible for the use of the statements in this document.

# PULSO BURSÁTIL

## SOVEREIGN RATING

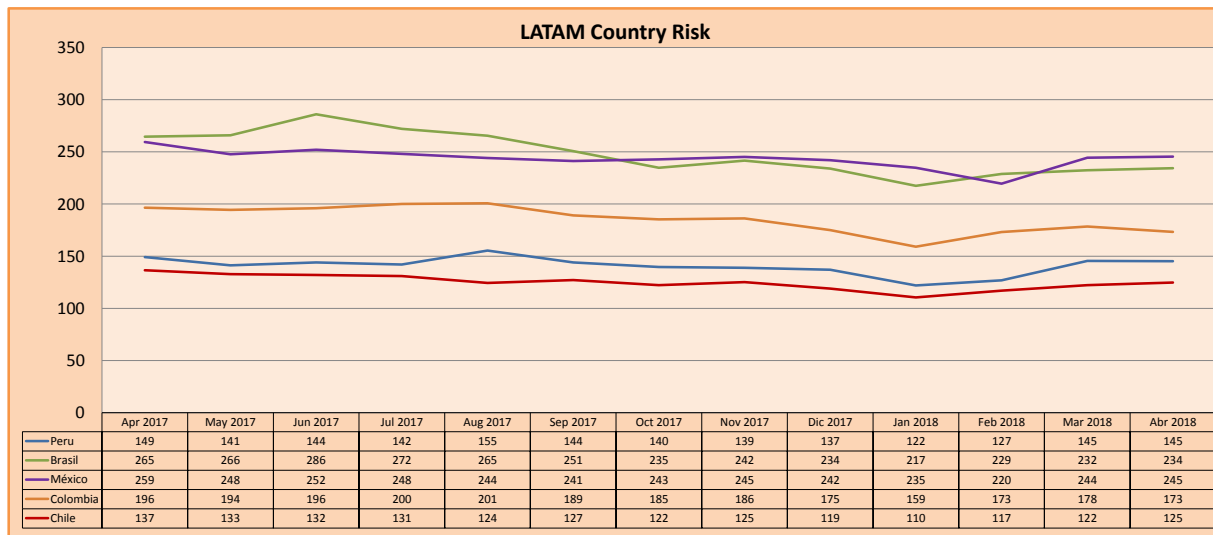
### RISK RATINGS

Moody's	S&P	Fitch	
Aaa	AAA	AAA	Prime
Aa1	AA+	AA+	High credit quality
Aa2	AA	AA	
Aa3	AA-	AA-	
A1	A+	A+	Medium-high grade, with low credit risk
A2	A	A	
A3	A-	A-	
Baa1	BBB+	BBB+	Moderate Credit Risk
Baa2	BBB	BBB	
Baa3	BBB-	BBB-	
Ba1	BB+	BB+	It has speculative elements and it is subject to substantial credit risk
Ba2	BB	BB	
Ba3	BB-	BB-	
B1	B+	B+	It is considered speculative and it has high credit risk
B2	B	B	
B3	B-	B-	
Caa1	CCC+		Bad credit conditions and it is subject to high credit risk
Caa2	CCC		
Caa3	CCC-	CCC	
Ca	C		Very close to default or in default
		DDD	
C	D	DD D	

Source: Bloomberg

Latin America Credit Rating			
Clasificadora de riesgo			
Country	Moody's	Fitch	S&P
Peru	A3	BBB+	BBB+
Mexico	A3	BBB+	BBB+
Venezuela	C	C	SD
Brazil	Ba2	BB-	BB-
Colombia	Baa2	BBB	BBB-
Chile	Aa3	A	A+
Argentina	B2	B	B+
Panama	Baa2	BBB	BBB

Source: Bloomberg



Source: Bloomberg

Capital Market Laboratory Coordinator: Economist Bruno Bellido Anicama  
Support: Lith Fernandez, Maria Pia Quijano, Jairo Trujillo, Mario Villar  
e-mail: pulsobursatil@ulima.edu.pe  
facebook: www.facebook.com/pulsobursatil.ul  
Phone number : 4376767 Annexes: 35340 - 35310

The content of this document is just for informational purposes. The information and opinions expressed should not be considered as recommendations for future decisions. Under any circumstances, the Capital Market Laboratory of University of Lima will be responsible for the use of the statements in this document.