

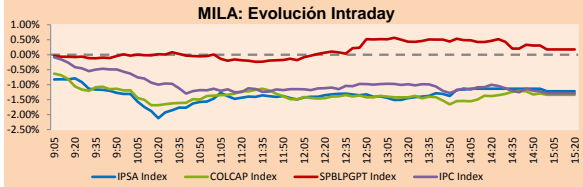
PULSO BURSÁTIL

Lima, October 11, 2018

MILA

Main Indices	Close	1 D	5 D	1 M	YTD	Market Cap. (US\$ bill)
▼ IPSA (Chile)	5,168.90	-1.22%	-2.95%	-0.83%	-7.11%	166.74
▼ IGPA (Chile)	26,340.12	-1.20%	-2.76%	-0.29%	-5.86%	224.56
▼ IGBC (Colombia)	12,276.75	-1.07%	-2.00%	1.89%	6.96%	114.01
▼ COLCAP (Colombia)	1,459.97	-1.34%	-3.78%	-1.39%	-3.55%	117.41
▲ S&P/BVL (Perú)*	19,250.38	0.20%	-1.93%	2.64%	-3.62%	107.30
▼ S&P/BVL SEL (Perú)	351.74	-1.00%	-2.18%	2.59%	-4.43%	82.45
▲ S&P/BVL LIMA 25	26,742.20	0.58%	-2.54%	1.22%	-13.08%	89.22
▼ IPC (México)	47,558.23	-1.20%	-2.31%	-2.74%	-3.64%	304.10
▼ S&P MILA 40	646.94	-2.15%	-3.70%	2.06%	-11.27%	293.93

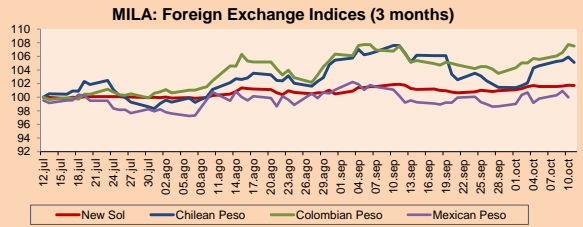
* Market Cap. Of the last price Legend: Variation 1D: 1 day, 5D: 5 days, 1M: 1 Month, YTD: Var%12/31/17 to date



Source: Bloomberg

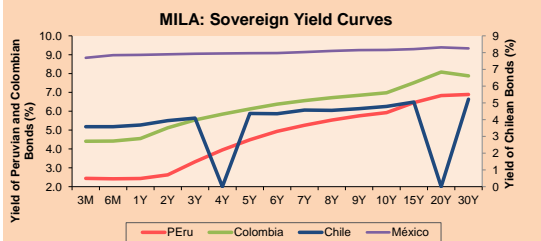
Currency	Price	1D*	5D*	30 D*	YTD*
▼ New Sol (PEN)	3,3271	-0.03%	-0.02%	-0.23%	2.76%
▼ Chilean Peso (CLP)	680.55	-0.76%	0.77%	-2.31%	10.58%
▼ Colombian Peso (COP)	3,087.50	-0.21%	1.74%	-0.02%	3.37%
▼ Mexican Peso (MXN)	18.98	-0.93%	-0.71%	-1.09%	-3.47%

*Legend: Variation 1D: 1 day, 5D: 5 days, 1M: 1 Month, YTD: Var%12/31/17 to date



Base: 12/07/18=100 Source: Bloomberg

Instrument	Currency	Price	Bid Yield (%)	Ask Yield (%)	Duration
PERU 4.125 08/25/2027	USD	101.302	3.98	3.92	7.38
PERU 7.125 03/30/19	USD	102.232	2.30	2.10	0.46
PERU 7.35 07/21/25	USD	121.373	3.77	3.72	5.44
PERU 8.75 11/21/33	USD	145.167	4.60	4.55	9.38
PERU 6.55 03/14/37	USD	123.785	4.63	4.61	11.10
PERU 5.625 11/18/2050	USD	114.001	4.78	4.75	15.60
CHILE 2.25 10/30/22	USD	95.676	3.45	3.36	3.79
CHILE 3.875 08/05/20	USD	101.478	3.10	2.95	1.74
CHILE 3.625 10/30/2042	USD	90.512	4.27	4.25	15.32
COLOM 11.75 02/25/20	USD	111.215	3.33	3.17	1.27
COLOM 11.85 03/09/28	USD	154.516	4.66	4.60	6.45
COLOM 10.375 01/28/33	USD	151.759	5.20	5.20	8.65
COLOM 7.375 09/18/37	USD	123.883	5.37	5.34	11.05
COLOM 6.125 01/18/41	USD	110.539	5.33	5.30	12.47
MEX 4 10/02/23	USD	100.141	4.00	3.94	4.47
MEX5.55 01/45	USD	103.534	5.311	5.286	13.84



Source: Bloomberg

Equity	Largest gains	Exchange	Amt.	Price	▲%
GRAMONC1	Lima	PEN	1.89	6.78	
BVN	Lima	USD	14.00	6.06	
SCCO	Lima	USD	42.54	2.95	
VOLCABC1	Lima	PEN	0.72	2.86	

Per Turnover	Exchange	Amount (US\$)
ECOPETROL	Colomb.	23,958,996
BCOLOMBIA	Colomb.	16,646,886
INVENCEN1	Lima	16,564,434
SQM-B	Santia.	15,764,073
BSANTANDER	Santia.	13,487,304

Largest losses	Exchange	Amt.	Price	▼%
ESSBIO-C	Santia.	CLP	12.89	-9.86
AMZN	Colomb.	COP	5345000.00	-7.69
UNITEX11	Lima	PEN	0.23	-4.96
ORO BLANCO	Santia.	CLP	4.58	-4.60

Per Volume	Exchange	Volume
BSANTANDER	Santia.	178,685,256
CHILE	Santia.	36,069,130
ECOPETROL	Colomb.	18,863,255
VAPORES	Santia.	15,386,958
INVENCEN1	Lima	15,351,400

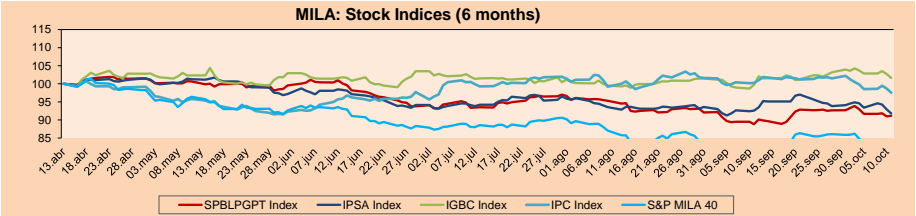
MILA

Peru: The General Index of the BVL of Peru ended today's session with a positive result of +0.11%. The index maintains a cumulative negative annual trend of -3.72% in local currency, while the adjusted yield in dollars amounts to -6.30%. Then, the S & P / BVL Peru SEL obtained a positive return of +0.82%, while the S & P / BVL LIMA 25 increased by +0.50%. The spot PEN reached S / 3.3285. **Highlight:** Peruvian stock market rises in line with the price of gold, highlights progress of Graña y Montero, and Buenaventura.

Chile: The IPSA index ended the day with a negative return of -1.22%. The sectors of the index with the most negative results were Industrial (-1.87%) and Communication services (-1.67%). On the other hand, the securities with the lowest results were Salfacorp SA (-3.12%) and Grupo Security SA (-2.37%). **Highlight:** The president of the Central Bank of Chile says that he has an explanation about the weakness of the labor market and why he should not avoid an increase in interest rates..

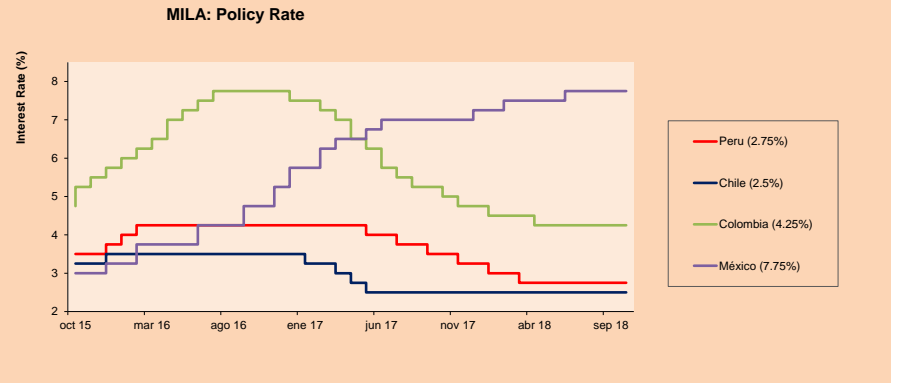
Colombia: The COLCAP index closed the session with negative results of -1.34%. The sectors with the highest performance to the downside were Energy (-2.87%) and Industrial (-2.25%). In addition, the stocks with the lowest yields were Canacol Energy Ltd (-3.12%) and Promigas SA (-3.03%). **Highlight:** The Colombian peso is at its equilibrium level, furthermore, it argued that the transmission of the depreciation of the currency to consumer prices is very moderate, finally, inflation will be 3.2% at the end of the year; according to the Co-director of the Colombian Central Bank.

Mexico: Mexico's IPC index closed today's session with a negative return of -1.20%. The sectors of the index that generated the most negative results were Industrial (-2.88%) and Health (-1.89%). Finally, the stocks with the lowest yields were Alpek SAB de CV (-4.12%) and Banco Santander de México SA Inst. (-3.62%). **Highlight:** Mexico State Power Co. is working to replace fuel oil with natural gas, according to President Jaime Hernández.



Base: 16/04/18=100 Source: Bloomberg

ETFs	Curr.	Close	1D	5D	30 D	YTD	Exchange
▲ iShares MSCI All Peru Caped Index Fund	USD	36.53	1.28%	-0.05%	4.55%	-10.86%	NYSE Arca
▲ iShares MSCI Chile Capped	USD	42.66	0.28%	-3.96%	1.57%	-18.21%	Cboe BZX
▲ Global X MSCI Colombia	USD	13.05	-1.21%	-5.02%	-2.39%	-9.61%	NYSE Arca
▼ iShares MSCI Mexico Capped	USD	48.52	-0.29%	-1.62%	-1.92%	-1.56%	NYSE Arca
▼ iShares MSCI Emerging Markets	USD	39.14	-1.01%	-4.51%	-5.07%	-16.94%	NYSE Arca
▼ Vanguard FTSE Emerging Markets	USD	37.76	-0.89%	-4.16%	-5.67%	-17.75%	NYSE Arca
▼ iShares Core MSCI Emerging Markets	USD	47.29	-1.13%	-4.60%	-5.23%	-16.80%	NYSE Arca
▼ iShares JP Morgan Emerging Markets Bonds	USD	55.03	-0.63%	-3.57%	-4.36%	-9.43%	Cboe BZX
▼ Morgan Stanley Emerging Markets Domestic	USD	6.38	-1.69%	-3.48%	-2.74%	-17.14%	New York



Source: Bloomberg

Capital Market Laboratory Coordinator: Economist Bruno Bellido Anicama
Support: Lith Fernandez, Samuel Machacuay, Maria Pia Quijano, Jorge Retamozo
e-mail: pulsobursatil@ulima.edu.pe
facebook: www.facebook.com/pulsobursatil.ul
Phone number : 4376767 Annexes: 35340 - 35310



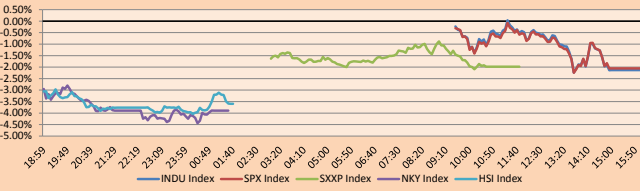
PULSO BURSÁTIL

WORLD

Main Indices	Close	1 D*	5 D*	1 M*	YTD*	Market Cap. (US\$ Mill.)
▼ Dow Jones (USA)	25,052.83	-2.13%	-5.91%	-3.54%	1.35%	7,134,337
▼ Standard & Poor's 500 (USA)	2,728.37	-2.06%	-5.97%	-5.52%	2.05%	24,411,868
▼ NASDAQ Composite (USA)	7,329.06	-1.25%	-6.99%	-8.07%	6.17%	11,599,741
▼ Stoxx EUROPE 600 (Europe)	359.65	-1.98%	-5.28%	-4.17%	-7.59%	8,382,902
▼ DAX (Germany)	11,539.35	-1.48%	-5.76%	-3.60%	-10.67%	922,108
▼ FTSE 100 (United Kingdom)	7,006.93	-1.94%	-5.55%	-3.67%	-8.86%	1,477,656
▼ CAC 40 (France)	5,106.37	-1.92%	-5.63%	-3.36%	-3.88%	1,306,208
▼ IBEX 35 (Spain)	9,007.90	-1.69%	-3.29%	-2.97%	-10.31%	483,395
▲ MSCI AC Asia Pacific Index	157.38	0.00%	-2.13%	-0.94%	-9.45%	17,039,170
▲ HANG SENG (Hong Kong)	25,266.37	-3.54%	-5.10%	-4.09%	-15.55%	2,381,820
▼ SHANGHAI SE Comp. (China)	2,583.46	-5.22%	-7.46%	-2.74%	-21.88%	4,005,424
▼ NIKKEI 225 (Japan)	22,590.86	-3.89%	-6.30%	-0.06%	-0.76%	3,430,078
▼ BOVESPA (Brazil)	82,921.08	-0.91%	-0.04%	11.07%	8.53%	6,372,626
▼ Merval (Argentina)	27,613.09	-3.28%	-10.72%	-5.32%	-8.16%	101,515

*Legend: Variation 1D: 1 Day; 5D: 5 Days; 1M: 1 Month; YTD: Var.% 12/31/17 to date

Global Markets: Intraday Evolution (var %)

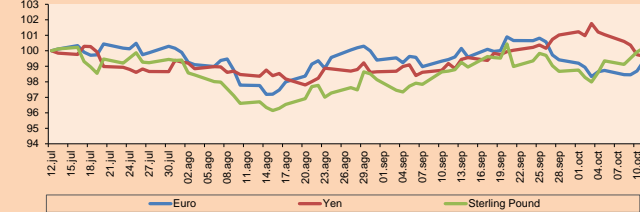


Source: Bloomberg

Currency	Price	1 D*	5 D*	1 M*	YTD*
▲ Euro	1.1593	0.63%	0.69%	-0.11%	-3.43%
▼ Yen	112.1600	-0.10%	-1.54%	0.47%	-0.47%
▲ Sterling Pound	1.3230	0.26%	1.61%	1.51%	-2.09%
▼ Yuan	6.8899	-0.50%	0.31%	0.25%	5.89%
▲ Hong Kong Dollar	7.8345	-0.03%	-0.01%	-0.19%	0.26%
▼ Brazilian Real	3.7810	0.65%	-2.41%	-8.96%	14.28%
▲ Argentine Peso	36.6006	-1.64%	-4.56%	-3.56%	96.53%

*Legend: Variation 1D: 1 Day; 5D: 5 Days; 1M: 1 Month; YTD: Var.% 12/31/17 to date

Foreign Exchange Indices (3 months)



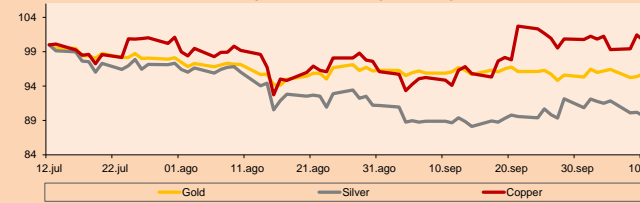
Base: 12/07/18-100

Source: Bloomberg

Commodities	Close	1 D*	5 D*	1 M*	YTD*
▲ Oro (US\$ Oz. T) (LME)	1,224.10	2.45%	2.01%	2.13%	-6.06%
▲ Plata (US\$ Oz. T) (LME)	14.58	1.98%	-0.07%	3.13%	-13.92%
- Cobre (US\$ TM) (LME)	6,251.00	0.00%	-0.59%	6.97%	-13.26%
- Zinc (US\$ TM) (LME)	2,636.00	0.00%	-1.73%	14.55%	-21.02%
▼ Petróleo WTI (US\$ Barril) (NYM)	70.99	-2.98%	-4.49%	2.82%	21.60%
- Estañio (US\$ TM) (LME)	18,994.00	0.00%	0.13%	-0.34%	-5.48%
- Plomo (US\$ TM) (LME)	1,896.00	0.00%	-4.57%	-2.44%	-23.69%
- Molibdeno (US\$ TM) (LME)	24,883.00	0.00%	-0.02%	-0.04%	59.12%
▲ Azúcar #11 (US\$ Libra) (NYB-ICE)	12.92	0.54%	4.79%	7.67%	-17.65%
▲ Cacao (US\$ TM) (NYB-ICE)	2,097.00	0.43%	4.33%	-8.19%	8.04%
▲ Café Arábica (US\$ TM) (NYB-ICE)	112.90	0.89%	5.56%	12.39%	-17.41%

*Legend: Variación 1D: 1 Día; 5D: 5 Días; 1M: 1 Mes; YTD: Var.% 31/12/17 a la fecha

Principal Metals Index (3 months)



Base: 12/07/18-100

Source: Bloomberg

Equity

Alemania (Acciones del DAX Index)

Largest gains	Curr.	Price	▲%	Exchange	Largest losses	Curr.	Price	▼%	Exchange
WDI GY	EUR	159.55	2.11	Xetra	ALV GY	EUR	182.28	-3.38	Xetra
RWE GY	EUR	17.32	1.26	Xetra	TKA GY	EUR	19.92	-3.11	Xetra
FRE GY	EUR	67.78	0.06	Xetra	MUV2 GY	EUR	183.75	-2.85	Xetra
VNA GY	EUR	38.98	-0.49	Xetra	FME GY	EUR	85.02	-2.68	Xetra

Europe (Stocks from STOXX EUROPE 600)

Largest gains	Curr.	Price	▲%	Exchange	Largest losses	Curr.	Price	▼%	Exchange
ING FP	EUR	67.84	7.85	EN Paris	SMWH LN	GBP	1800	-11.50	Londres
PNDORA DC	DKK	390	6.67	Copenhagen	HAS LN	GBP	156.7	-10.97	Londres
POLY LN	GBP	636.8	4.00	Londres	HIK LN	GBP	1674.5	-7.87	Londres
ARGX BB	EUR	59.6	3.65	EN Brussels	JUP LN	GBP	348.2	-7.69	Londres

Global Overview:

United States:

The US market closed the session with negative returns among its main indices, being for the Dow Jones (-2.13%) and the S & P 500 (-2.06%) it fell for the sixth consecutive day, the longest streak since a nine-day decline in November 2016. Both indices registered their worst falls since February 8, when the Nasdaq (-1.25%) ended with its worst record in the year since October 2008, in a context of greater concerns about the increase in yields of the bonds and higher interest rates. The market trend unleashed a massive sale in the bond market, reaching a maximum yield of seven years (3.158%). On the other hand, President Donald Trump increased his criticism of the Federal Reserve for the weakness of the stock market, arguing that the tendency of the expected rate of the FED is very aggressive. In the latest data reported, unemployment claims increased by 7,000 in the last week, while the consumer price index rose 0.1% in September. Regarding the dollar, it traded down on Thursday, which placed the currency in its third consecutive session of losses, so that the DXY fell by 0.45% to 95,033, a minimum of 10 days.

Europe:

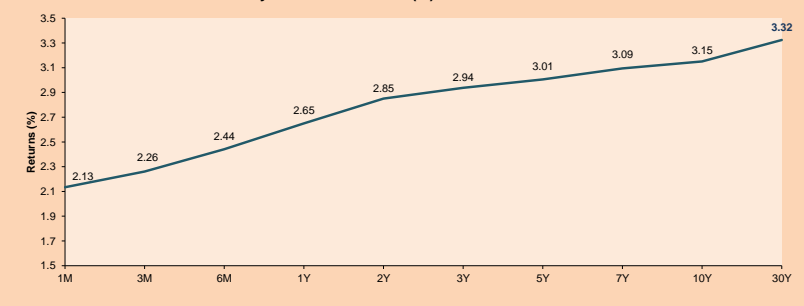
The European stock market closed the session with negative results among its main indices. The Italian banking sector was affected while concerns remain about a possible budget conflict between Rome and the European Union. This fact has generated upward pressures on the performance of Italian bonds, so the FTSE MIB fell -1.84%. In other markets, such as London and Germany the result was the same, the FTSE 100 and the DAX fell -1.94% and -1.48% respectively. In the case of Germany, the weakest reading is due to lower industrial production (0.3% drop in August) and strong bond sales. In general, the Stoxx 600 index retreated -1.98% during the session. On the other hand, the price of Brent crude oil fell -3.33%, affecting the share price of Royal Dutch Shell PLC (-3.04%). In corporate news, Norsk Hydro ASA shares rose 4% to close at -2.07%, after being authorized to use filter technology as a first step to reopen a refinery days after saying it would stop production and lay off more than 4000 people.

Asia:

The Shanghai index fell to its worst level since November 25, 2014 one day after the biggest daily decline in the US market in 8 months. The massive sale was triggered by multiple factors such as: the increase in the yield rate of US Treasury bonds, the warming of the Sino-American conflict, and by the IMF's claims of concern about the stability of the international financial system and risks to global growth. The Shanghai Composite fell by 6.05% but finally closed the session at -5.22%. Technological companies were very affected, among them, HNA Technology, TDG Holding and Yihua Lifestyle Technology, fell the daily maximum of 10%. The Hang Seng Index fell 3.5%, its worst level since May 19, 2017 and the biggest daily decline since February 6 this year. The Nikkei 225 fell 3.9%, its lowest level in a month, the index accumulated a drop of 8% since last week reached its maximum of 27 years. Japanese companies will begin reporting their third quarter results and it is expected that adequate results will prevent further declines.

ETFs	Curr.	Close	1D	5D	30 D	YTD	Exchange
SPDR S&P 500 ETF TRUST	USD	272.17	-2.20%	-5.97%	-5.84%	1.99%	NYSE Arca
ISHARES MSCI EMERGING MARKET	USD	39.14	-1.01%	-4.51%	-5.07%	-16.94%	NYSE Arca
ISHARES IBXX HIGH YLD CORP	USD	84.70	0.08%	-1.14%	-1.39%	-2.93%	NYSE Arca
FINANCIAL SELECT SECTOR SPDR	USD	26.40	-2.98%	-6.18%	-6.81%	-5.41%	NYSE Arca
VANECK VECTORS GOLD MINERS E	USD	19.87	6.66%	5.97%	13.09%	-14.50%	NYSE Arca
ISHARES RUSSELL 2000 ETF	USD	153.57	-1.91%	-6.15%	-10.21%	0.73%	NYSE Arca
SPDR GOLD SHARES	USD	115.78	2.57%	2.03%	2.26%	-6.36%	NYSE Arca
ISHARES 20+ YEAR TREASURY BO	USD	114.87	1.22%	0.75%	-3.19%	-9.45%	NASDAQ GM
INVESCO QQQ TRUST SERIES 1	USD	169.60	-1.24%	-7.01%	-7.38%	8.89%	NASDAQ GM
ISHARES NASDAQ BIOTECHNOLOGY	USD	109.08	-2.00%	-7.47%	-7.12%	2.16%	NASDAQ GM
ENERGY SELECT SECTOR SPDR	USD	72.80	-3.38%	-5.66%	-0.90%	0.75%	NYSE Arca
PROSHARES ULTRA VIX ST FUTUR	USD	59.10	12.98%	51.38%	40.55%	15.77%	NYSE Arca
UNITED STATES OIL FUND LP	USD	14.95	-2.80%	-5.02%	2.40%	24.48%	NYSE Arca
ISHARES MSCI BRAZIL ETF	USD	37.51	-1.60%	2.74%	21.00%	-7.27%	NYSE Arca
SPDR S&P OIL & GAS EXP & PR	USD	40.65	-3.12%	-7.32%	-0.34%	9.33%	NYSE Arca
UTILITIES SELECT SECTOR SPDR	USD	53.01	-1.83%	0.36%	-2.25%	0.63%	NYSE Arca
ISHARES US REAL ESTATE ETF	USD	75.70	-2.72%	-2.84%	-8.06%	-6.55%	NYSE Arca
SPDR S&P BIOTECH ETF	USD	84.41	-1.21%	-8.09%	-12.56%	-0.54%	NYSE Arca
ISHARES IBXX INVESTMENT GRA	USD	113.30	0.42%	-0.07%	-1.28%	-6.79%	NYSE Arca
ISHARES JP MORGAN USD EMERGI	USD	105.57	0.15%	-0.56%	0.35%	-9.07%	NASDAQ GM
REAL ESTATE SELECT SECT SPDR	USD	30.83	-2.93%	-2.87%	-8.33%	-6.41%	NYSE Arca
ISHARES CHINA LARGE-CAP ETF	USD	39.08	-0.89%	-4.03%	-3.24%	-15.36%	NYSE Arca
CONSUMER TRENDS SPDR	USD	52.09	-2.47%	-2.62%	-4.18%	-8.44%	NYSE Arca
VANECK VECTORS JUNIOR GOLD M	USD	29.33	6.46%	5.39%	10.93%	-14.06%	NYSE Arca
SPDR BBG BARC HIGH YIELD BND	USD	35.32	0.26%	-1.12%	-1.45%	-3.81%	NYSE Arca
VANGUARD REAL ESTATE ETF	USD	76.02	-2.86%	-2.84%	-8.65%	-8.39%	NYSE Arca

USA Treasury Bonds Yield Curve (%)



Source: Bloomberg

Capital Market Laboratory Coordinator: Economist Bruno Bellido Anicama
 Support: Lith Fernandez, Samuel Machacuay, Maria Pia Quijano, Jorge Retamozo
 e-mail: pulsobursatil@ulima.edu.pe
 facebook: www.facebook.com/pulsobursatil.ul
 Phone number : 4376767 Annexes: 35340 - 35310

PULSO BURSÁTIL

LIMA

Stocks

Ticker	Currency	Price	1D*	5D*	30D*	YTD*	Frequency	Volume (US\$)	Beta	Dividend Yield (%)	Price Earning	Market Cap. (M US\$)	Economic Sector*	Index Weight
▼ ALICORC1 PE**	S/.	10.10	-1.46%	-3.81%	0.50%	-4.72%	100.00%	562,034	0.71	2.38	18.20	2,591.12	Industrial	3.53%
▲ ATACOCB1 PE**	S/.	0.44	1.16%	0.00%	11.54%	-36.03%	100.00%	13,102	1.60	0.00	-	123.53	Mining	1.02%
- BACKUS11 PE**	S/.	22.00	0.00%	-1.79%	-1.12%	19.50%	68.42%	11,869	0.39	5.05	8.96	8,464.73	Industrial	0.82%
▼ BAP PE**	US\$	214.35	-2.35%	-3.79%	2.81%	3.05%	100.00%	172,584	1.07	4.27	-	17,096.87	Diverse	5.82%
▲ BVN PE**	US\$	14.00	6.06%	4.87%	13.82%	-0.85%	100.00%	198,692	1.60	0.41	-	3,852.88	Mining	5.88%
- CASAGRC1 PE**	S/.	3.90	0.00%	-6.02%	0.00%	-37.00%	100.00%	4,179	1.04	0.49	169.45	98.74	Agricultural	1.31%
- CONTINC1 PE**	S/.	3.95	0.00%	-0.75%	-5.05%	4.64%	84.21%	78,074	0.43	3.60	15.00	6,373.71	Finance	2.85%
- CORARE11 PE**	S/.	0.66	0.00%	-4.35%	-4.35%	-8.33%	100.00%	15,287	0.89	7.02	5.66	305.97	Industrial	1.72%
▲ CPACASC1 PE**	S/.	7.37	0.14%	-0.41%	11.33%	-9.57%	94.74%	5,538	0.77	4.75	34.77	946.47	Industrial	2.38%
▼ CVERDEC1 PE**	US\$	22.00	-2.22%	-3.93%	2.33%	-25.93%	84.21%	57,152	1.28	2.60	19.80	7,701.23	Mining	5.25%
- ENGEPEC1 PE**	S/.	2.00	0.00%	-2.44%	-5.66%	1.01%	42.11%	12,797	0.72	0.00	9.54	1,739.13	Public Services	1.44%
- ENDISPC1**	S/.	5.50	0.00%	-1.96%	-5.17%	-2.48%	26.32%	24,071	0.76	0.00	10.33	1,055.60	Public Services	0.98%
▼ FERREYC1 PE**	S/.	2.31	-0.86%	-1.70%	9.48%	-9.41%	100.00%	30,810	0.88	5.86	9.18	677.42	Diverse	4.90%
▲ GRAMONC1 PE**	S/.	1.89	6.78%	-0.53%	0.00%	1.07%	94.74%	41,948	0.92	0.00	-	374.95	Diverse	4.05%
- IFS PE**	US\$	39.65	0.00%	-0.63%	2.19%	2.99%	78.95%	888	0.65	0.00	15.11	4,484.85	Diverse	7.22%
▼ INRETC1 PE**	US\$	25.50	-1.92%	-2.30%	2.41%	21.43%	84.21%	903,516	1.00	0.00	53.88	2,621.59	Diverse	5.28%
▲ LUSURC1 PE**	S/.	11.95	0.76%	1.27%	-0.25%	-0.83%	100.00%	146,315	0.51	5.77	12.69	1,748.99	Public Services	1.81%
- MINSUR11 PE**	S/.	1.43	0.00%	-1.38%	-1.38%	-20.56%	84.21%	21,423	1.38	4.82	0.16	1,239.12	Mining	3.09%
- PML PE**	US\$	0.23	0.00%	-1.29%	48.39%	-28.13%	78.95%	4,070	1.78	0.00	-	60.68	Mining	2.12%
- RELAPAC1 PE**	S/.	0.16	0.00%	-5.42%	-7.65%	-49.35%	100.00%	1,463	1.30	0.00	3.05	166.81	Industrial	2.12%
▲ SCCO PE**	US\$	42.54	2.95%	-2.61%	7.15%	-10.56%	73.68%	34,031	2.94	2.94	18.46	32,885.31	Mining	2.14%
▲ SIDERC1 PE**	S/.	0.55	1.85%	-3.51%	10.00%	14.58%	94.74%	6,013	1.43	0.00	5.01	202.99	Industrial	1.43%
▼ TV PE**	US\$	0.54	-1.82%	-6.90%	3.85%	-55.00%	89.47%	34,020	1.59	0.00	-	448.83	Mining	2.93%
▼ UNACEMC1 PE**	S/.	2.17	-0.91%	-4.82%	-13.20%	-27.67%	73.68%	4,348	0.68	2.40	19.55	1,073.88	Industrial	3.00%
▲ VOLCABC1 PE**	S/.	0.72	2.86%	-6.49%	-5.26%	-45.45%	100.00%	80,915	1.73	3.79	-	2,286.28	Mining	5.90%

Quantity of shares: 25 Up 8

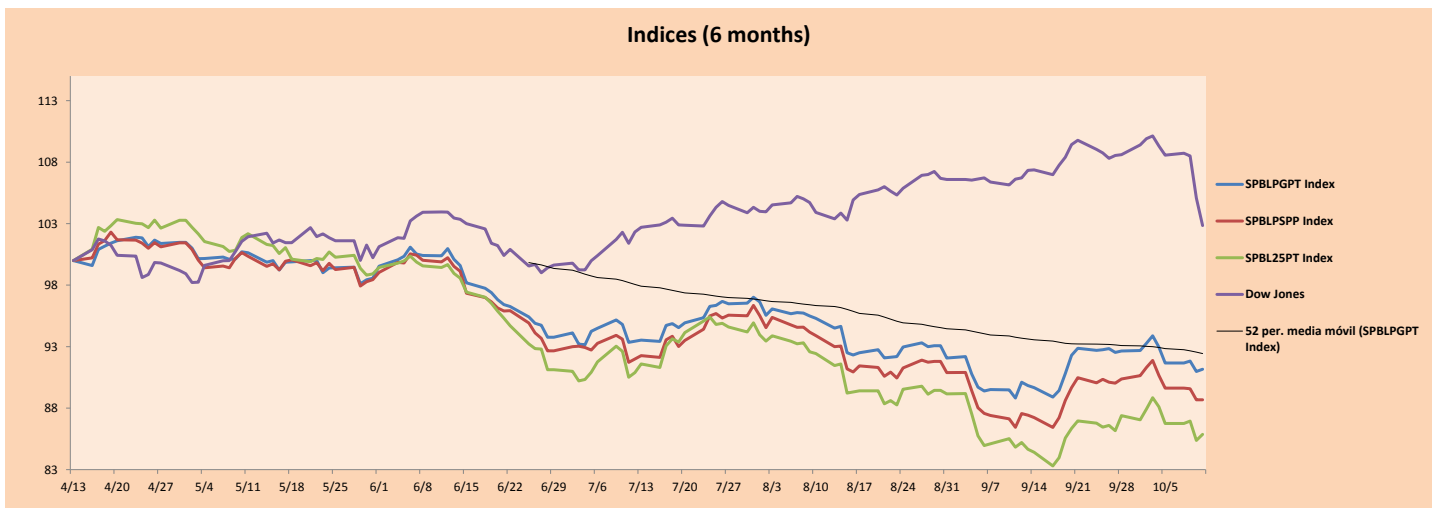
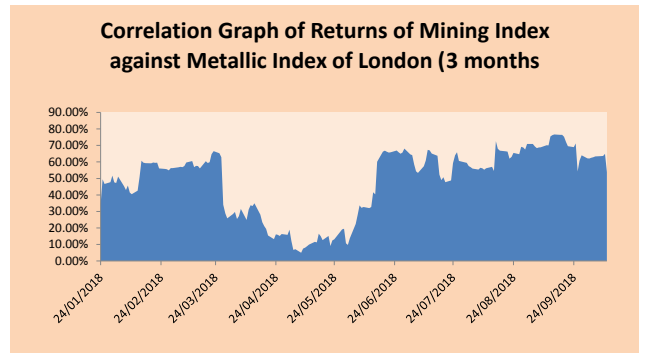
Source: Bloomberg, Económica Down 7
 * Bloomberg Industry Classification System Hold 10
 ** PER is used in the stock market and original currency of the instrument

*Legend: Variation 1D: 1 Day; 5D: 5 Days; 1M: 1 Month; YTD: Var.% 12/31/17 to date

Sectorial Indices

	Close	1D*	5D*	30D*	YTD*	Beta
▲ Mining Index	307.03	3.33%	-0.61%	7.04%	-13.63%	1.70
▼ Consumer Index	977.94	-1.34%	-2.89%	0.75%	8.46%	0.44
▲ Industrial Index	215.02	0.47%	-1.87%	2.52%	-8.87%	0.72
▼ Banking and Financial Index	1,148.35	-2.05%	-3.36%	2.17%	7.41%	0.98
▲ Construction Index	236.60	1.19%	-1.89%	-0.58%	-10.76%	0.64
▲ Services Index	425.02	0.19%	-0.53%	-2.63%	2.03%	0.19
▲ Juniors Index	34.83	2.96%	-1.64%	23.03%	-20.53%	0.99
▲ Electric Index	414.93	0.19%	-0.53%	-2.63%	2.03%	0.19

*Legend: Variation 1D: 1 Day; 5D: 5 Days; 1M: 1 Month; YTD: Var.% 12/31/17 to date



Source: Bloomberg

Capital Market Laboratory Coordinator: Economist Bruno Bellido Anicama
 Support: Lith Fernandez, Samuel Machacay, María Pia Quijano, Jorge Retamozo
 e-mail: pulsobursatil@ulima.edu.pe
 facebook: www.facebook.com/pulsobursatil.ul
 Phone number : 4376767 Annexes: 35340 - 35310

PULSO BURSÁTIL

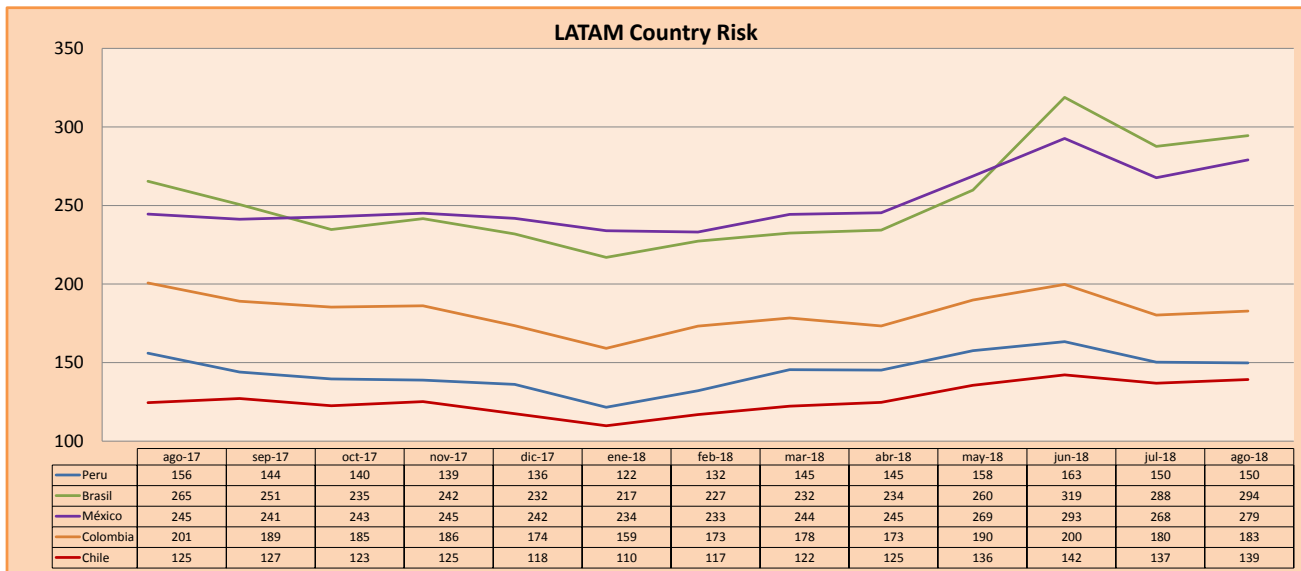
SOVEREIGN RATING

RISK RATINGS			
Moody's	S&P	Fitch	
Aaa	AAA	AAA	Prime
Aa1	AA+	AA+	High credit quality
Aa2	AA	AA	
Aa3	AA-	AA-	
A1	A+	A+	Medium-high grade, with low credit risk
A2	A	A	
A3	A-	A-	
Baa1	BBB+	BBB+	Moderate Credit Risk
Baa2	BBB	BBB	
Baa3	BBB-	BBB-	
Ba1	BB+	BB+	It has speculative elements and it is subject to substantial credit risk
Ba2	BB	BB	
Ba3	BB-	BB-	
B1	B+	B+	It is considered speculative and it has high credit risk
B2	B	B	
B3	B-	B-	
Caa1	CCC+		Bad credit conditions and it is subject to high credit risk
Caa2	CCC		
Caa3	CCC-		
Ca	CC	CCC	Very close to default or in default
	C		
C	D	DDD	

Source: Bloomberg

Latin America Credit Rating			
Clasificadora de riesgo			
Country	Moody's	Fitch	S&P
Peru	A3	BBB+	BBB+
Mexico	A3	BBB+	BBB+
Venezuela	C	C	SD
Brazil	Ba2	BB-	BB-
Colombia	Baa2	BBB	BBB-
Chile	A1	A	A+
Argentine	B2	B	B+ *-
Panama	Baa2	BBB	BBB

Source: Bloomberg



Source: Bloomberg

Capital Market Laboratory Coordinator: Economist Bruno Bellido Anicama
 Support: Lith Fernandez, Samuel Machacuay, Maria Pia Quijano, Jorge Retamozo
 e-mail: pulsobursatil@ulima.edu.pe
 facebook: www.facebook.com/pulsobursatil.ul
 Phone number : 4376767 Annexes: 35340 - 35310