

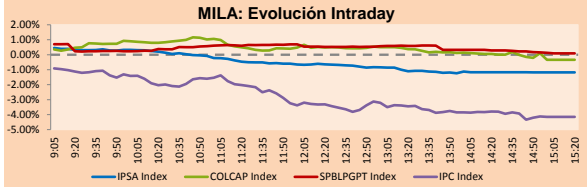
PULSO BURSÁTIL

Lima, October 29, 2018

MILA

Main Indices	Close	1 D	5 D	1 M	YTD	Market Cap. (US\$ bill)
▼ IPSA (Chile)	5,063.63	-1.18%	-1.15%	-4.16%	-9.00%	158.56
▼ IGPA (Chile)	25,794.62	-1.00%	-1.12%	-4.06%	-7.81%	213.85
▼ IGBC (Colombia)	12,422.86	-0.27%	-0.50%	-0.33%	8.23%	103.23
▼ COLCAP (Colombia)	1,392.46	-0.34%	-3.33%	-7.54%	-8.01%	106.24
▲ S&P/BVL (Perú)*	18,593.16	0.09%	-1.65%	-4.96%	-6.91%	101.03
▲ S&P/BVL SEL (Perú)	340.10	0.01%	-1.95%	-5.11%	-7.59%	76.93
▲ S&P/BVL LIMA 25	25,065.96	0.57%	-2.24%	-7.90%	-18.53%	83.53
▼ IPC (México)	43,879.13	-4.20%	-6.57%	-11.36%	-11.09%	265.22
▼ S&P MILA 40	614.31	-1.26%	-2.87%	-9.88%	-15.74%	275.44

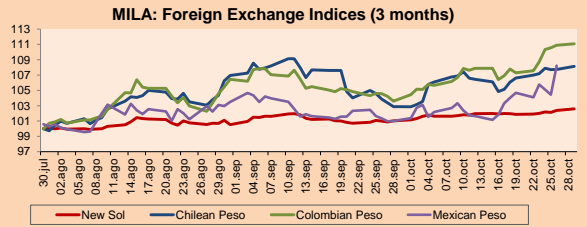
* Market Cap. Of the last price Legend: Variation 1D: 1 day, 5D: 5 days, 1M: 1 Month, YTD: Var%12/31/17 to date



Source: Bloomberg

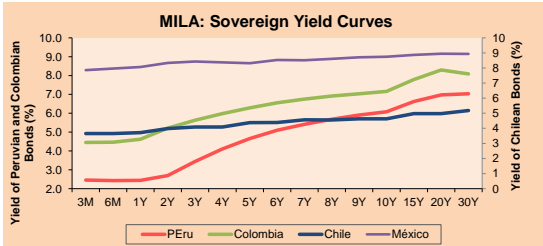
Currency	Price	1D*	5D*	30 D*	YTD*
▲ New Sol (PEN)	3,3548	0.19%	0.67%	1.53%	3.61%
▲ Chilean Peso (CLP)	690.34	0.38%	1.07%	5.10%	12.17%
▲ Colombian Peso (COP)	3,186.60	0.17%	3.27%	7.22%	6.69%
▲ Mexican Peso (MXN)	20.06	3.62%	3.38%	7.18%	2.05%

* Legend: Variation 1D: 1 day, 5D: 5 days, 1M: 1 Month, YTD: Var%12/31/17 to date



Base: 30/07/18=100 Source: Bloomberg

Instrument	Currency	Price	Bid Yield (%)	Ask Yield (%)	Duration
PERU 4.125 08/25/2027	USD	101.072	4.01	3.95	7.32
PERU 7.125 03/30/19	USD	102.303	1.76	1.35	0.41
PERU 7.35 07/21/25	USD	120.756	3.86	3.78	5.38
PERU 8.75 11/21/33	USD	143.735	4.69	4.65	9.30
PERU 6.55 03/14/37	USD	122.376	4.73	4.70	11.03
PERU 5.625 11/18/2050	USD	112.522	4.87	4.84	15.48
CHILE 2.25 10/30/22	USD	95.6	3.49	3.39	3.78
CHILE 3.875 08/05/20	USD	101.388	3.14	2.97	1.69
CHILE 3.625 10/30/2042	USD	90.996	4.31	4.27	15.55
COLOM 11.75 02/25/20	USD	110.975	3.19	3.18	1.22
COLOM 11.85 03/09/28	USD	152.888	4.81	4.74	6.39
COLOM 10.375 01/28/33	USD	149.008	5.43	5.37	8.59
COLOM 7.375 09/18/37	USD	121.494	5.54	5.51	10.95
COLOM 6.125 01/18/41	USD	108.4	5.48	5.45	12.36
MEX 4 10/02/23	USD	99.46	4.13	4.12	4.42
MEX5.55 01/45	USD	99.662	5.58	5.568	13.67



Source: Bloomberg

Equity	Exchange	Amt.	Price	▲%	Largest losses	Exchange	Amt.	Price	▼%
ATACOBBC1	Lima	PEN	0.39	6.85	AMZN	Lima	USD	1505.00	-9.23
SIDERC1	Lima	PEN	0.51	3.45	CLUBCAMPO	Santia.	CLP	3550.00	-8.95
COFARE11	Lima	PEN	0.63	3.28	NORTEGRAN	Santia.	CLP	4.20	-7.49
PFAVAL	Colomb.	COP	1100.00	2.80	ETB	Colomb.	COP	236.00	-7.45

Per Turnover	Exchange	Amount (US\$)	Per Volume	Exchange	Volume
ECOPETROL	Colomb.	15,758,115	ORO BLANCO	Santia.	133,078,080
PFAVAL	Colomb.	9,379,404	ESVAL-C	Santia.	98,458,073
SQM-B	Santia.	8,214,455	BSANTANDER	Santia.	69,466,821
FALABELLA	Santia.	5,853,687	VAPORES	Santia.	37,446,771
CENCOSUD	Santia.	5,268,307	PFAVAL	Colomb.	27,506,750

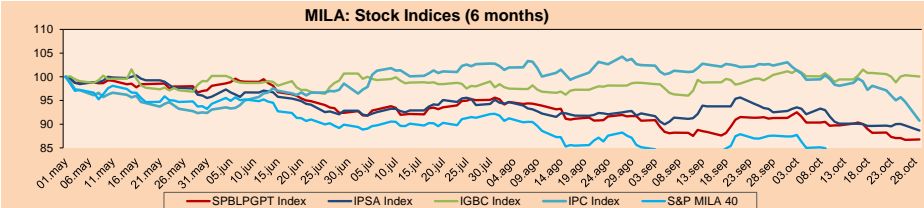
MILA

Peru: The General Index of the BVL of Peru ended today's session with a positive result of +0.09%. The index maintains an accumulated annual negative trend of -6.91% in local currency, while the adjusted yield in dollars amounts to -10.16%. Then, the S&P/BVL Peru SEL obtained a positive return of +0.01%, while the S&P/BVL LIMA 25 increased by +0.57%. The spot PEN reached S/3.3548. Headline of the day: Peru requested the US suspend tariffs on goods for US\$25 million.

Chile: The IPSA index ended the day with a negative return of -1.18%. The sectors of the index with the worst results were Real Estate (-3.12%) and Industrial Property (-2.51%). On the other hand, the values with the lowest results were Parque Arauco SA (-3.12%) and Lan Airlines SA (-3.07%). Headline of the day: Santiago stock market falls sharply and reaches its lowest level since December 2017.

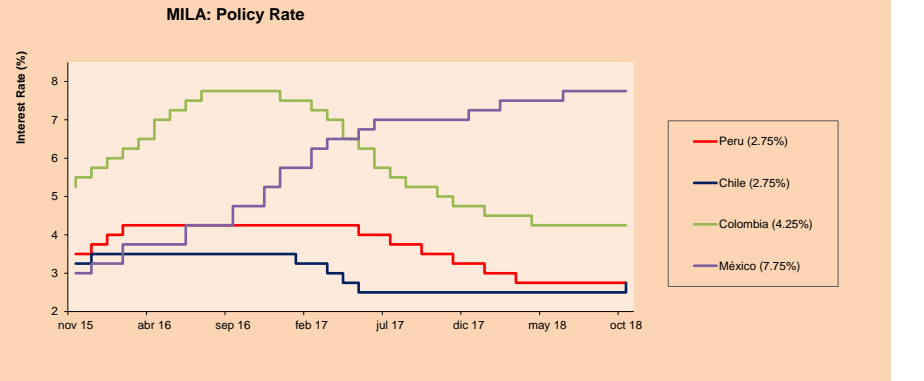
Colombia: The COLCAP index closed the session with negative results of -0.34%. Communication Services (-7.45%) and Industrial Services (-4.12%) were the sectors with the highest performance. In addition, the stocks with the worst performance were Empresa de Telecomunicaciones de Bogotá SA (-7.45%) and Concreto SA (-6.67%). Headline of the day: Government presented a plan to attract investment from companies such as Amazon.

Mexico: Mexico's IPC index closed today's session with a negative yield of -4.20%. The sectors of the index that generated the most negative results were Finance (-6.72%) and Health (-6.50%). Finally, the stocks with the most disappointing performances were Grupo Financiero Banorte SAB de CV (-8.55%) and Wal-Mart de Mexico SAB de CV (-6.39%). Headline of the day: Mexico's peso and stock market plummet after airport cancellation.



Base: 02/05/18=100 Source: Bloomberg

ETFs	Curr.	Close	1D	5D	30 D	YTD	Exchange
▼ iShares MSCI All Peru Caped Index Fund	USD	34.49	-0.38%	-3.12%	-6.58%	-15.84%	NYSE Arca
▼ iShares MSCI Chile Capped	USD	41.15	-2.58%	-2.97%	-9.18%	-21.11%	Cboe BZX
▼ Global X MSCI Colombia	USD	12.2761	-0.20%	-5.79%	-11.24%	-14.97%	NYSE Arca
▼ iShares MSCI Mexico Capped	USD	42.6	-7.15%	-9.03%	-16.85%	-13.57%	NYSE Arca
▼ iShares MSCI Emerging Markets	USD	38	-1.73%	-5.24%	-11.46%	-19.35%	NYSE Arca
▼ Vanguard FTSE Emerging Markets	USD	36.68	-1.95%	-4.70%	-10.54%	-20.10%	NYSE Arca
▼ iShares Core MSCI Emerging Markets	USD	45.85	-1.80%	-5.23%	-11.45%	-19.42%	NYSE Arca
▼ iShares JP Morgan Emerging Markets Bonds	USD	53.535	-1.08%	-3.82%	-9.72%	-11.89%	Cboe BZX
▼ Morgan Stanley Emerging Markets Domestic	USD	6.18	-0.96%	-4.92%	-8.31%	-19.74%	New York



Source: Bloomberg

Capital Market Laboratory Coordinator: Economist Bruno Bellido Anicama
Support: Lith Fernandez, Samuel Machacuay, Maria Pia Quijano, Jorge Retamozo
e-mail: pulsobursatil@ulima.edu.pe
facebook: www.facebook.com/pulsobursatil.ul
Phone number : 4376767 Annexes: 35340 - 35310

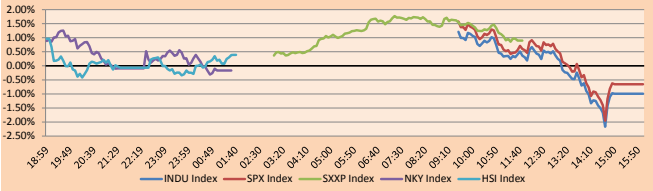
PULSO BURSÁTIL

WORLD

Main Indices	Close	1 D*	5 D*	1 M*	YTD*	Market Cap. (US\$ Mill.)
▼ Dow Jones (USA)	24,442.92	-0.99%	-3.45%	-7.62%	-1.12%	6,969,500
▼ Standard & Poor's 500 (USA)	2,641.25	-0.66%	-4.16%	-9.36%	-1.21%	23,287,314
▼ NASDAQ Composite (USA)	7,050.29	-1.63%	-5.60%	-12.38%	2.13%	11,208,164
▲ Stoxx EUROPE 600 (Europe)	355.51	0.90%	-1.18%	-7.22%	-8.65%	8,390,900
▲ DAX (Germany)	11,335.48	1.20%	-1.64%	-7.44%	-12.25%	868,299
▲ FTSE 100 (United Kingdom)	7,026.32	1.25%	-0.23%	-6.44%	-8.60%	1,510,714
▲ CAC 40 (France)	4,989.35	0.44%	-1.27%	-9.18%	-6.08%	1,305,296
▲ IBCX 35 (Spain)	8,821.20	1.04%	0.17%	-6.05%	-12.17%	482,702
▼ MSCI AC Asia Pacific Index	145.80	-0.55%	-3.09%	-11.82%	-16.12%	16,065,162
▼ HANG SENG (Hong Kong)	24,812.04	0.38%	-5.13%	-10.71%	-17.07%	2,305,001
▼ SHANGHAI SE Comp. (China)	2,542.10	-2.18%	-4.25%	-9.90%	-23.13%	3,906,385
▼ NIKKEI 225 (Japan)	21,149.80	-0.18%	-6.48%	-12.31%	-7.09%	3,225,160
▼ BOVESPA (Brazil)	83,796.71	-2.24%	-2.10%	5.61%	9.68%	696,954
▼ Merval (Argentina)	28,898.24	-1.61%	1.16%	-13.64%	-3.88%	102,590

*Legend: Variation 1D: 1 Day; 5D: 5 Days; 1M: 1 Month; YTD: Var.% 12/31/17 to date

Global Markets: Intraday Evolution (var %)

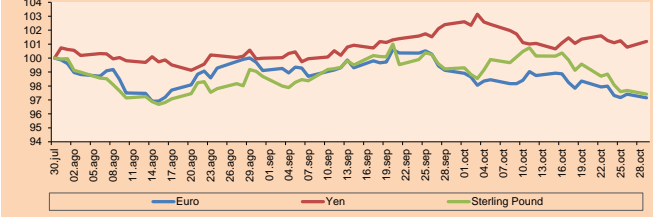


Source: Bloomberg

Currency	Price	1 D*	5 D*	1 M*	YTD*
▼ Euro	1.1373	-0.28%	-0.79%	-1.99%	-5.26%
▲ Yen	112.3700	0.41%	-0.40%	-1.17%	-0.28%
▼ Sterling Pound	1.2793	-0.27%	-1.31%	-1.83%	-5.33%
▲ Yuan	6.9622	0.27%	0.21%	1.36%	7.00%
▲ Hong Kong Dollar	7.8431	0.03%	0.04%	0.19%	0.37%
▲ Brazilian Real	3.7194	2.12%	0.88%	-8.15%	12.42%
▲ Argentine Peso	36.9090	0.21%	1.21%	-10.65%	98.19%

*Legend: Variation 1D: 1 Day; 5D: 5 Days; 1M: 1 Month; YTD: Var.% 12/31/17 to date

Foreign Exchange Indices (3 months)

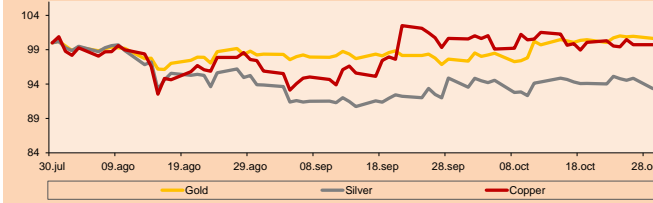


Base: 30/07/18=100
 Source: Bloomberg

Commodities	Close	1 D*	5 D*	1 M*	YTD*
▼ Oro (US\$ Oz. T) (LME)	1,229.40	-0.30%	0.60%	3.09%	-5.65%
▼ Plata (US\$ Oz. T) (LME)	14.46	-1.58%	-0.73%	-1.63%	-14.65%
▼ Cobre (US\$ TM) (LME)	6,207.00	0.00%	-0.57%	-0.90%	-13.88%
▼ Zinc (US\$ TM) (LME)	2,704.00	0.00%	-0.55%	1.71%	-18.98%
▼ Petróleo WTI (US\$ Barril) (NYM)	67.04	-0.81%	-3.34%	-8.24%	15.45%
▼ Estañio (US\$ TM) (LME)	19,345.00	0.00%	0.45%	2.57%	-3.74%
▼ Plomo (US\$ TM) (LME)	1,984.75	0.00%	-0.20%	-1.88%	-20.12%
▼ Molibdeno (US\$ TM) (LME)	24,885.00	0.00%	0.02%	-0.02%	59.13%
▼ Azúcar #11 (US\$ Libra) (NYB-ICE)	13.50	-2.46%	-2.32%	20.54%	-13.96%
▼ Cacao (US\$ TM) (NYB-ICE)	2,195.00	-2.49%	-1.13%	6.71%	13.09%
▼ Café Arabica (US\$ TM) (NYB-ICE)	114.25	-4.51%	-2.89%	11.52%	-16.42%

*Legend: Variación 1D: 1 Día; 5D: 5 Días; 1M: 1 Mes; YTD: Var.% 31/12/17 a la fecha

Principal Metals Index (3 months)



Base: 30/07/18=100
 Source: Bloomberg

Equity

Alemania (Acciones del DAX Index)

Largest gains	Curr.	Price	▲%	Exchange	Largest losses	Curr.	Price	▼%	Exchange
IFX GY	EUR	17.11	6.01	Xetra	HEI GY	EUR	57.22	-0.42	Xetra
CON GY	EUR	143.55	5.47	Xetra	SAP GY	EUR	92.63	-0.39	Xetra
1COV GY	EUR	55.02	4.40	Xetra	EOAN GY	EUR	8.464	-0.28	Xetra
VOW3 GY	EUR	142.42	4.05	Xetra	LHA GY	EUR	18.835	-0.13	Xetra

Europe (Stocks from STOXX EUROPE 600)

Largest gains	Curr.	Price	▲%	Exchange	Largest losses	Curr.	Price	▼%	Exchange
ALT FP	EUR	8.905	12.37	EN Paris	SK FP	EUR	118.3	-4.44	EN Paris
FR FP	EUR	25.78	9.28	EN Paris	BBA LN	GBP	232.2	-4.37	EN Paris
EO FP	EUR	43.06	8.87	EN Paris	HO FP	EUR	111.05	-3.35	EN Paris
GRF SQ	EUR	25.44	8.81	Soc.Bol SIBF	RCO FP	EUR	100	-3.29	EN Paris

Global Overview:

United States:

The US market closed the session with negative returns. The Dow Jones ended the day at -0.99% and the S&P 500 fell at -0.66% and the Nasdaq Composite Index behaved similarly, being -1.63%, which experienced a greater setback compared to a gain initial since August 25, 2015; being the shares disadvantaged since the operators blamed the new news on the US-China trade talks and the worries difficult to shake on world growth. Among the main news, a Bloomberg report indicated that the administration of President Donald Trump was prepared to impose tariffs on all imports from China, increasing a dispute over the world's biggest economic superpowers that has been at the heart of the recent slowdown. The Boeing company (-0.77%) led the losses of the Dow Jones, contributing 163 points to the fall of the same. On the other hand, the reference yield of the 10-year Treasury rose 0.6% to 3.083%, after having risen to 3.117%. Finally, the increase in spending could raise inflation, a key consideration for the FED, as it debates the need for further rate increases amid rising trade tensions and tougher financial conditions.

Europe:

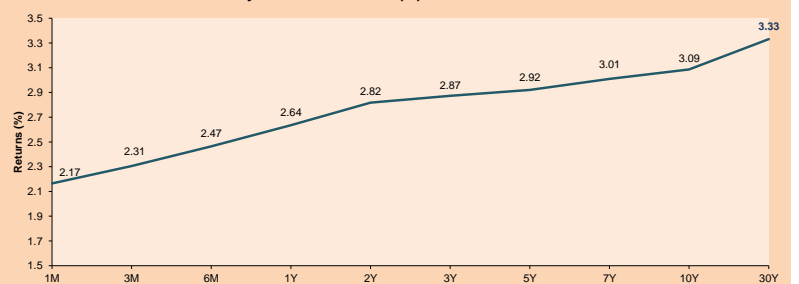
The European market closed the session with positive results, among its main indices, the FTSE 100 (+1.25%), DAX (+1.20%), CAC 40 (+0.44%) and the Stoxx 600 (+0.90%) showed a bullish performance on Monday. The euro fell after German Chancellor Angela Merkel announced that she would resign as party leader and would not run for political office once her term ends in 2021. That means Merkel's mandate as head of the Democratic Union Cristiana will end in December. The English market started with a strong week thanks to solid gains from HSBC (+4.76%) after the banking giant published results that exceeded forecasts. The pound sterling retraced, moving to buy \$ 1.2809 from \$ 1.2828 last Friday in New York; however, this Monday, it remained appreciated + 1.79% approximately. In other news, Chancellor Hammond's budget, which was the last before the Brexit marked by austerity, would be coming to an end. European car stocks soared after a report from China plans to reduce taxes by 50% on most car purchases. The shares of Daimler (+1.28%), Volkswagen (+3.86%) and Peugeot (+1.41%) rose in the session.

Asia:

The Asian stock market ended the day with negative results among its main indices, with the exception of the Hang Seng that closed with a variation of +0.38. The Nikkei 225 index ended the session at 21149.80 points, which represents a daily variation from the previous close of -0.16%. The sectors, define by the Global Industrial Classification Standard (GICS), that led the losses were Communication Services (-1.57%) and Health (-0.93%) while the Ricoh company (-10.61%) presented its biggest variation in more 2 years and the worst performance among the companies that make up the Japanese index. In other news, in September for the fifth consecutive month, the growth of industrial companies' profits slows down as sales of raw materials and manufactured products fell, according to reports from Reuters. The Chinese market was affected by the slowdown, the CSI 300, compose by China's Blue Chip shares fell 3.05% of the stocks that make up the index, 44 closed higher and 239 lower. The Shanghai Composite fell 2.18% in this session and maintains a YTD yield of -23.13% in yuan and -28.16% adjusted in dollars.

ETFs	Curr.	Close	1D	5D	30 D	YTD	Exchange
SPDR S&P 500 ETF TRUST	USD	263.86	-0.65%	-4.05%	-9.24%	-1.12%	NYSE Arca
ISHARES MSCI EMERGING MARKET	USD	38.00	-1.73%	-5.24%	-11.46%	-19.35%	NYSE Arca
ISHARES IBOXX HIGH YLD CORP	USD	84.15	-0.09%	-0.93%	-2.65%	-3.56%	NYSE Arca
FINANCIAL SELECT SECTOR SPDR	USD	25.48	0.87%	-2.38%	-7.61%	-8.71%	NYSE Arca
VANECK VECTORS GOLD MINERS E	USD	19.01	-0.28%	-4.28%	2.65%	-18.20%	NYSE Arca
ISHARES RUSSELL 2000 ETF	USD	146.67	-0.55%	-4.16%	-12.98%	-3.80%	NYSE Arca
SPDR GOLD SHARES	USD	116.31	-0.99%	0.52%	3.15%	-5.94%	NYSE Arca
ISHARES 20+ YEAR TREASURY BO	USD	114.73	-0.23%	1.03%	-2.17%	-9.56%	NASDAQ GM
INVESCO QQQ TRUST SERIES 1	USD	163.23	-2.06%	-6.14%	-12.14%	-4.86%	NASDAQ GM
ISHARES NASDAQ BIOTECHNOLOGY	USD	102.61	-0.97%	-6.39%	-15.85%	-3.90%	NASDAQ GM
ENERGY SELECT SECTOR SPDR	USD	65.24	-1.87%	-7.77%	-13.86%	-9.71%	NYSE Arca
PROSHARES ULTRA VIX ST FUTUR	USD	66.80	0.38%	25.14%	81.52%	30.85%	NYSE Arca
UNITED STATES OIL FUND LP	USD	14.11	-1.54%	-4.27%	-9.09%	17.49%	NYSE Arca
ISHARES MSCI BRAZIL ETF	USD	38.63	-3.52%	-2.89%	14.53%	-4.50%	NYSE Arca
SPDR S&P OIL & GAS EXP & PR	USD	34.61	-3.65%	-12.07%	-20.05%	-6.91%	NYSE Arca
UTILITIES SELECT SECTOR SPDR	USD	54.12	1.41%	-0.18%	2.79%	2.73%	NYSE Arca
ISHARES US REAL ESTATE ETF	USD	77.76	1.16%	1.37%	-2.82%	-4.01%	NYSE Arca
SPDR S&P BIOTECH ETF	USD	77.92	-3.11%	-6.67%	-18.72%	-8.19%	NYSE Arca
ISHARES IBOXX INVESTMENT GRA	USD	112.80	-0.12%	0.21%	-1.85%	-7.21%	NYSE Arca
ISHARES JF MORGAN USD EMERGI	USD	104.99	-0.43%	-0.34%	-2.62%	-9.57%	NASDAQ GM
REAL ESTATE SELECT SECT SPDR	USD	32.00	1.65%	2.01%	-1.87%	-2.85%	NYSE Arca
ISHARES CHINA LARGE-CAP ETF	USD	38.26	-1.85%	-5.62%	-10.65%	-17.13%	NYSE Arca
CONSUMER STAPLES SPDR	USD	54.45	1.15%	0.31%	0.96%	-4.29%	NYSE Arca
VANECK VECTORS JUNIOR GOLD M	USD	27.89	-1.13%	-4.71%	1.94%	-18.28%	NYSE Arca
SPDR BBG BARC HIGH YIELD BND	USD	35.09	0.00%	-0.82%	-2.66%	-4.44%	NYSE Arca
VANGUARD REAL ESTATE ETF	USD	78.18	1.27%	1.49%	-3.10%	-5.78%	NYSE Arca

USA Treasury Bonds Yield Curve (%)



Source: Bloomberg

Capital Market Laboratory Coordinator: Economist Bruno Bellido Anicama
 Support: Lith Fernandez, Samuel Machacuy, Maria Pia Quijano, Jorge Retamozo
 e-mail: pulsobursatil@ulima.edu.pe
 facebook: www.facebook.com/pulsobursatil.ulima
 Phone number : 4376767 Annexes: 35340 - 35310

PULSO BURSÁTIL

LIMA

Stocks

Ticker	Currency	Price	1D*	5D*	30D*	YTD*	Frequency	Volume (US\$)	Beta	Dividend Yield (%)	Price Earning	Market Cap. (M US\$)	Economic Sector*	Index Weight
▼ ALICORC1 PE**	S/.	9.85	-0.51%	-1.01%	-6.64%	-7.08%	100.00%	1,583,145	0.67	2.44	17.75	2,505.71	Industrial	3.53%
▲ ATACOCB1 PE**	S/.	0.39	6.85%	2.36%	-12.95%	-42.65%	100.00%	15,827	1.67	0.00	-	109.83	Mining	1.02%
- BACKUS11 PE**	S/.	20.30	0.00%	-7.73%	-9.78%	10.27%	68.42%	1,610	0.44	0.00	8.27	8,104.16	Industrial	0.82%
▼ BAP PE**	US\$	214.50	-0.09%	-1.63%	-3.81%	3.13%	100.00%	97,905	1.05	4.27	-	17,108.84	Diverse	5.82%
▲ BVN PE**	US\$	14.00	1.16%	-1.06%	5.26%	-0.85%	100.00%	11,184	1.61	0.41	-	3,858.88	Mining	5.88%
▲ CASAGRC1 PE**	S/.	3.85	2.67%	1.58%	0.00%	-37.80%	100.00%	7,876	1.00	0.49	167.28	96.67	Agricultural	1.31%
- CONTINC1 PE**	S/.	3.99	0.00%	-1.24%	0.25%	5.70%	89.47%	6,149	0.41	3.56	15.15	6,385.10	Finance	2.85%
▲ CORARE11 PE**	S/.	0.63	3.28%	-3.08%	-7.35%	-12.50%	100.00%	50,482	0.94	7.36	3.67	290.41	Industrial	1.72%
- CPACASC1 PE**	S/.	6.70	0.00%	-2.19%	-7.59%	-17.79%	100.00%	31,272	0.83	5.22	31.61	853.73	Industrial	2.38%
- CVERDEC1 PE**	US\$	21.00	0.00%	-3.23%	-7.89%	-29.29%	100.00%	22,174	1.15	2.72	18.90	7,351.18	Mining	5.25%
- ENGEPEC1 PE**	S/.	2.00	0.00%	0.00%	-4.76%	1.01%	42.11%	3,232	0.70	0.00	9.54	1,724.77	Public Services	1.44%
- ENDISPC1**	S/.	5.37	0.00%	0.00%	-5.12%	-4.79%	57.89%	7,602	0.77	0.00	10.08	1,022.14	Public Services	0.98%
▲ FERREYC1 PE**	S/.	2.07	0.98%	-5.05%	-11.91%	-18.82%	100.00%	454,395	0.88	6.54	8.23	602.02	Diverse	4.90%
- GRAMONC1 PE**	S/.	2.10	0.00%	2.94%	14.75%	12.30%	100.00%	10,621	0.84	0.00	-	413.17	Diverse	4.05%
- IFS PE**	US\$	37.30	0.00%	-4.11%	-6.75%	-3.12%	78.95%	36,479	0.65	3.75	14.32	4,219.04	Diverse	7.22%
▲ INRETC1 PE**	US\$	25.75	3.00%	0.98%	-1.34%	22.62%	94.74%	2,655,623	1.00	0.00	54.82	2,647.29	Diverse	5.28%
- LUSURC1 PE**	S/.	11.32	0.00%	0.18%	-4.47%	-6.06%	94.74%	5,648	0.49	6.10	12.02	1,643.11	Public Services	1.81%
- MINSUR11 PE**	S/.	1.28	0.00%	-5.88%	-11.72%	-28.89%	94.74%	24,617	1.38	5.38	0.14	1,099.99	Mining	3.09%
▼ PML PE**	US\$	0.18	-4.86%	-12.00%	-20.00%	-45.00%	78.95%	7,603	1.83	0.00	-	46.44	Mining	2.12%
▲ RELAPAC1 PE**	S/.	0.14	1.48%	-3.52%	-11.61%	-55.81%	100.00%	45,493	1.37	0.00	2.64	144.35	Industrial	2.12%
▲ SCCO PE**	US\$	36.40	-2.99%	-4.79%	-18.20%	-23.47%	89.47%	4,150	3.43	3.43	16.07	28,137.20	Mining	2.14%
▲ SIDERC1 PE**	S/.	0.51	3.45%	-1.92%	-7.27%	6.25%	94.74%	17,246	1.45	0.00	4.65	186.67	Industrial	1.43%
▼ TV PE**	US\$	0.40	-0.50%	-20.08%	-32.54%	-66.83%	100.00%	24,566	1.67	0.00	-	330.80	Mining	2.93%
▼ UNACEMC1 PE**	S/.	2.11	-0.47%	-4.52%	-8.26%	-29.67%	89.47%	4,067	0.62	2.46	19.01	1,035.57	Industrial	3.00%
- VOLCABC1 PE**	S/.	0.62	0.00%	-1.59%	-19.48%	-53.03%	100.00%	203,512	1.77	2.20	-	2,194.58	Mining	5.90%

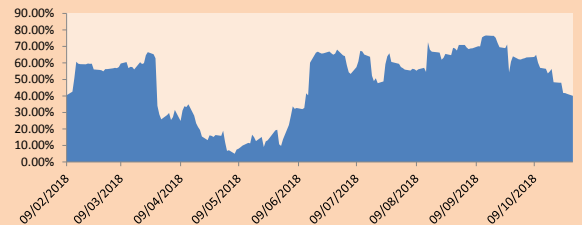
Quantity of shares: 25
 Source: Bloomberg, Económica
 * Bloomberg Industry Classification System
 ** PER is used in the stock market and original currency of the instrument
 *Legend: Variation 1D: 1 Day; 5D: 5 Days; 1M: 1 Month; YTD: Var.% 12/31/17 to date

Sectorial Indices

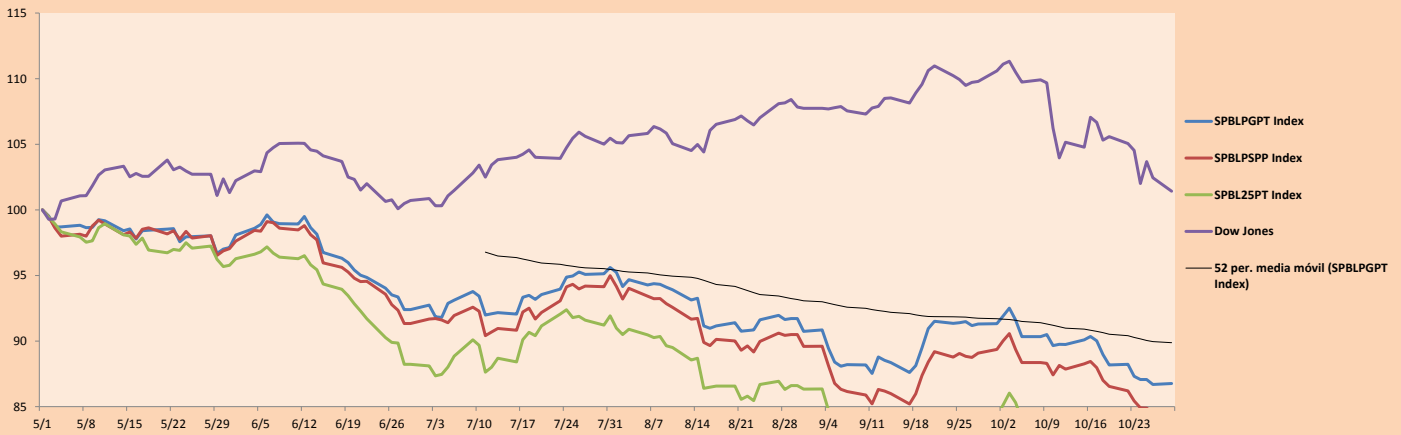
	Close	1D*	5D*	30D*	YTD*	Beta
▼ Mining Index	282.56	-0.59%	-2.80%	-8.42%	-20.51%	1.76
▲ Consumer Index	962.59	0.85%	-1.04%	-4.38%	6.76%	0.40
▲ Industrial Index	203.87	0.33%	-2.70%	-6.11%	-13.60%	0.72
▲ Banking and Financial Index	1,153.79	0.12%	-0.97%	-2.32%	7.92%	0.98
▲ Construction Index	230.87	0.00%	-1.56%	-3.05%	-12.92%	0.65
- Services Index	410.03	0.00%	0.34%	-4.80%	-1.57%	0.15
▼ Juniors Index	30.71	-2.10%	-3.28%	-7.28%	-29.93%	1.05
- Electric Index	400.29	0.00%	0.34%	-4.80%	-1.57%	0.15

*Legend: Variation 1D: 1 Day; 5D: 5 Days; 1M: 1 Month; YTD: Var.% 12/31/17 to date

Correlation Graph of Returns of Mining Index against Metallic Index of London (3 months)



Indices (6 months)



Source: Bloomberg

Capital Market Laboratory. Coordinator: Economist Bruno Bellido Anicama
 Support: Lith Fernandez, Samuel Machacuy, María Pia Quijano, Jorge Retamozo
 e-mail: pulsobursatil@ulima.edu.pe
 facebook: www.facebook.com/pulsobursatil.ul
 Phone number : 4376767 Annexes: 35340 - 35310

PULSO BURSÁTIL

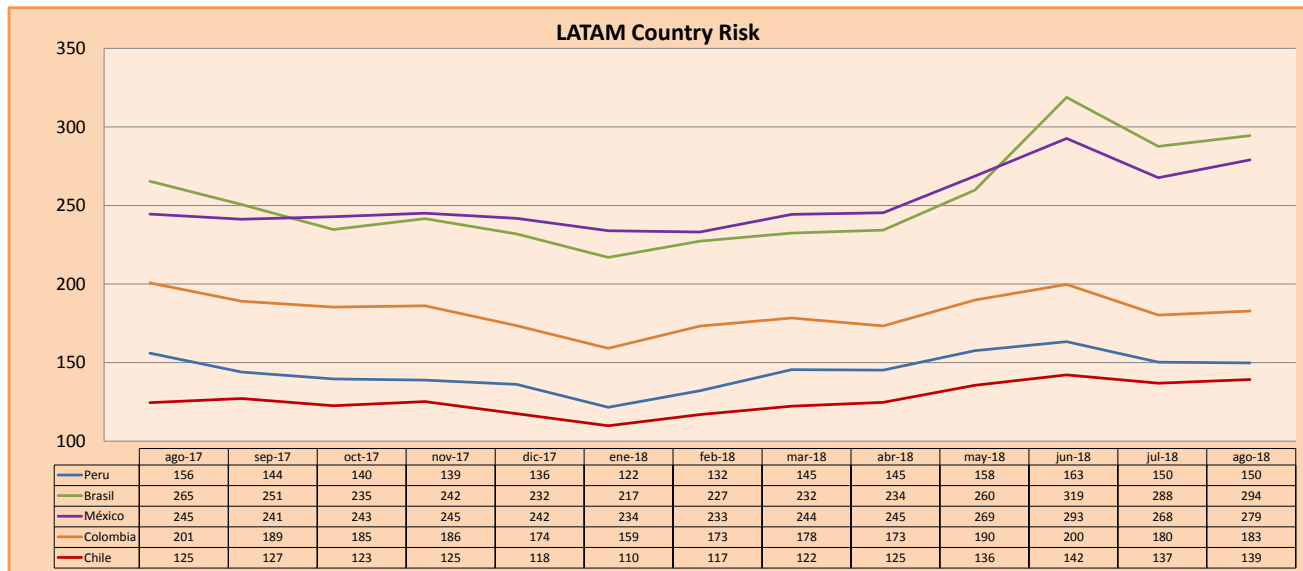
SOVEREIGN RATING

RISK RATINGS			
Moody's	S&P	Fitch	
Aaa	AAA	AAA	Prime
Aa1	AA+	AA+	High credit quality
Aa2	AA	AA	
Aa3	AA-	AA-	
A1	A+	A+	Medium-high grade, with low credit risk
A2	A	A	
A3	A-	A-	
Baa1	BBB+	BBB+	Moderate Credit Risk
Baa2	BBB	BBB	
Baa3	BBB-	BBB-	
Ba1	BB+	BB+	It has speculative elements and it is subject to substantial credit risk
Ba2	BB	BB	
Ba3	BB-	BB-	
B1	B+	B+	It is considered speculative and it has high credit risk
B2	B	B	
B3	B-	B-	
Caa1	CCC+		Bad credit conditions and it is subject to high credit risk
Caa2	CCC		
Caa3	CCC-	CCC	
Ca	CC		Very close to default or in default
	C		
C	D	DDD DD D	

Source: Bloomberg

Latin America Credit Rating			
Clasificadora de riesgo			
Country	Moody's	Fitch	S&P
Peru	A3	BBB+	BBB+
Mexico	A3	BBB+	BBB+
Venezuela	C	C	SD
Brazil	Ba2	BB-	BB-
Colombia	Baa2	BBB	BBB-
Chile	A1	A	A+
Argentine	B2	B	B+ *-
Panama	Baa2	BBB	BBB

Source: Bloomberg



Source: Bloomberg

Capital Market Laboratory Coordinator: Economist Bruno Bellido Anicama
 Support: Lith Fernandez, Samuel Machacuay, Maria Pia Quijano, Jorge Retamozo
 e-mail: pulsobursatil@ulima.edu.pe
 facebook: www.facebook.com/pulsobursatil.ul
 Phone number : 4376767 Annexes: 35340 - 35310