



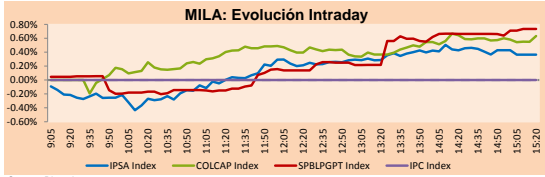
PULSO BURSÁTIL

Lima, February 4, 2019

MILA

Main Indices	Close	1 D	5 D	1 M	YTD	Market Cap. (US\$ bill)
▲ IPSA (Chile)	5,472.93	0.37%	0.50%	5.47%	7.20%	179.37
▲ IGPA (Chile)	27,602.68	0.34%	0.57%	4.95%	6.37%	242.82
▲ IGBC (Colombia)	12,009.34	0.62%	2.20%	5.30%	7.76%	100.80
▲ COLCAP (Colombia)	1,474.94	0.88%	3.13%	8.71%	11.24%	102.20
▲ S&P/BVL (Perú)*	20,450.28	0.77%	3.04%	5.04%	5.68%	104.51
▲ S&P/BVL SEL (Perú)	546.60	0.63%	3.75%	6.44%	6.68%	79.96
▲ S&P/BVL LIMA 25	27,535.28	0.14%	2.04%	5.03%	3.88%	86.09
▲ IPC (México)	43,738.27	-0.57%	0.23%	3.02%	5.04%	278.39
▲ S&P MILA 40	682.97	0.99%	3.14%	8.25%	12.21%	291.86

* Market Cap. Of the last price Legend: Variation 1D: 1 day; 5D: 5 days; 1M: 1 Month; YTD: Var%12/31/18 to date



Source: Bloomberg

Currency	Price	1D*	5D*	30 D*	YTD*
▲ New Sol (PEN)	3,330.6	0.03%	-0.83%	-0.44%	-1.14%
▼ Chilean Peso (CLP)	651.14	-0.15%	-3.17%	-4.57%	-6.12%
▼ Colombian Peso (COP)	3,088.02	-0.08%	-2.25%	-3.27%	-4.98%
▲ Mexican Peso (MXN)	19.11	0.02%	0.36%	-1.59%	-2.76%

* Legend: Variation 1D: 1 day; 5D: 5 days; 1M: 1 Month; YTD: Var%12/31/18 to date

Equity	Exchange	Amt.	Price	▲ %
Largest gains				
MASISA	Santia.	CLP	45.59	8.44
SIEMEL	Santia.	CLP	279.90	7.65
ESVAL-C	Santia.	CLP	0.02	5.00
SIDERC1	Lima	PEN	0.65	4.84
Per Turnover	Exchange	Amount (US\$)		
ANDINA-B	Santia.	13,651,135		
ISA	Colomb.	9,201,696		
SQM-B	Santia.	7,965,078		
EQPETROL	Colomb.	7,126,272		
PFBOLOM	Colomb.	6,716,615		

Largest losses	Exchange	Amt.	Price	▼ %
ENKA	Colomb.	COP	8.20	-16.07
ELCOMEI1	Lima	PEN	1.50	-5.66
HIPERMARC	Santia.	CLP	3.60	-4.00
ATAOCBC1	Lima	PEN	0.31	-2.82
Per Volume	Exchange	Volume		
BSANTANDER	Santia.	61,761,485		
CHILE	Santia.	25,896,128		
VAPORES	Santia.	14,756,105		
ORO BLANCO	Santia.	11,811,106		
Fabricato	Colomb.	11,385,975		

MILA

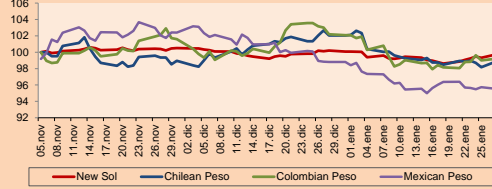
Perú: The General Index of the BVL of Peru ended today's session with a positive result of + 0.77%. The index maintains a cumulative positive annual trend of + 5.68% in local currency, while the adjusted gain in dollars amounts to + 6.90%. On the other hand, the S & P / BVL Peru SEL closed with gains of + 0.63%, while the S & P / BVL LIMA 25 rose by + 0.14%. The spot PEN reached S / 3.3250. Highlights: Peruvian currency closes slightly with rise with little negotiated volume.

Chile: The IPSA index ended the day with a positive return of + 0.37%. The sectors of the index with the highest rents were Industrial (+ 1.58%) and Communications Services (+ 1.38%). Additionally, the securities with the highest yields were LAN Airlines SA (+ 2.06%) and Colbún SA (+ 1.89%). Highlights: Feller Rate qualifies in "AA" new Chilean bonds C. Arauco

Colombia: The COLCAP index closed the session with positive results of + 0.88%. The sectors with the best performance were Finance (+ 2.36%) and Industrial (+ 1.95%). In addition, the stocks with the highest yields were Banco de Bogotá SA (+ 4.45%) and Grupo Aval Acciones y Valores (+ 3.23%). Highlights: Bogotá grew 4.9% in the registry of companies of the Chamber of Commerce for 2018.

México: The IPC index of Mexico did not open on the day of the Constitution. Highlights: The exit of Bill Gross puts in his sights his great bet on the Mexican bond.

MILA: Foreign Exchange Indices (3 months)

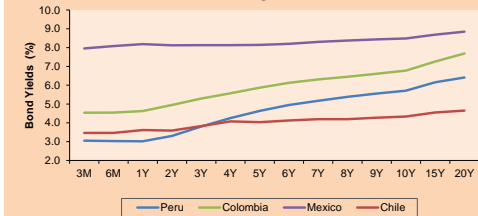


Base: 05/11/18=100
Source: Bloomberg

Fixed Income

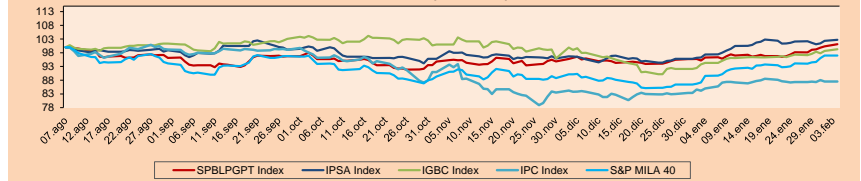
Instrument	Currency	Price	Bid Yield (%)	Ask Yield (%)	Duration
PERU 4.125 08/25/2027	USD	106.141	3.31	3.28	7.12
PERU 7.125 03/30/19	USD	101.063	0.49	-0.26	0.15
PERU 7.35 07/21/25	USD	123.737	3.27	3.23	5.30
PERU 8.75 11/21/33	USD	152.017	4.06	4.03	9.52
PERU 6.55 03/14/37	USD	130.788	4.14	4.10	11.03
PERU 5.625 11/18/2050	USD	122.79	4.31	4.29	16.34
CHILE 2.25 10/30/22	USD	97.632	2.96	2.89	3.52
CHILE 3.875 08/05/20	USD	101.46	2.97	2.78	1.45
CHILE 3.625 10/30/2042	USD	95.654	3.92	3.89	15.63
COLOM 11.75 02/25/20	USD	109.106	3.04	2.77	0.96
COLOM 11.85 03/09/28	USD	156.54	4.32	4.24	6.18
COLOM 10.375 01/28/33	USD	152.011	5.14	5.10	8.69
COLOM 7.375 09/18/37	USD	127.031	5.12	5.10	10.88
COLOM 6.125 01/18/41	USD	114.192	5.06	5.03	12.71
MEX 4 10/02/23	USD	101.113	3.76	3.72	4.16
MEX5.55 01/45	USD	105.63	5.165	5.143	14.09

MILA: Sovereign Yield Curves



Source: Bloomberg

MILA: Stock Indices (6 months)

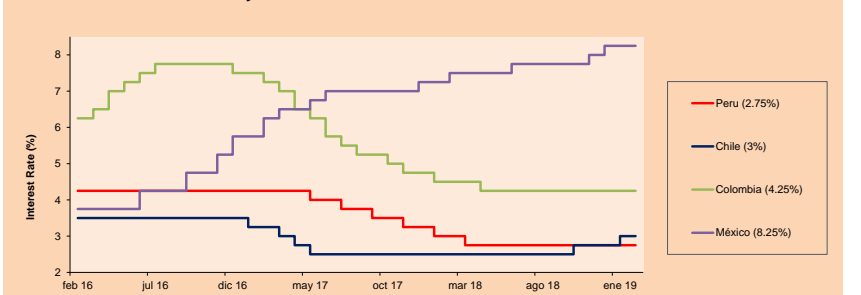


Base: 08/08/18=100
Source: Bloomberg

ETFs

	Curr.	Close	1D	5D	30 D	YTD	Exchange
▲ iShares MSCI All Peru Caped Index Fund	USD	38.13	0.39%	3.92%	5.51%	7.41%	NYSE Arca
▲ iShares MSCI Chile Capped	USD	47.36	1.22%	4.39%	10.53%	14.37%	Cboe BZX
▲ Global X MSCI Colombia	USD	13.12	0.61%	5.30%	11.56%	17.56%	NYSE Arca
▲ iShares MSCI Mexico Capped	USD	45.09	0.54%	1.08%	5.72%	9.49%	NYSE Arca
▲ iShares MSCI Emerging Markets	USD	42.83	0.16%	2.56%	7.91%	9.65%	NYSE Arca
▲ Vanguard FTSE Emerging Markets	USD	41.56	0.22%	2.44%	6.95%	9.08%	NYSE Arca
▲ iShares Core MSCI Emerging Markets	USD	51.49	0.19%	2.81%	7.83%	9.20%	NYSE Arca
▲ iShares JP Morgan Emerging Markets Bonds	USD	59.24	0.18%	1.66%	5.05%	6.03%	Cboe BZX
▼ Morgan Stanley Emerging Markets Domestic	USD	6.75	-0.30%	2.74%	7.14%	11.39%	New York

MILA: Policy Rate



Source: Bloomberg

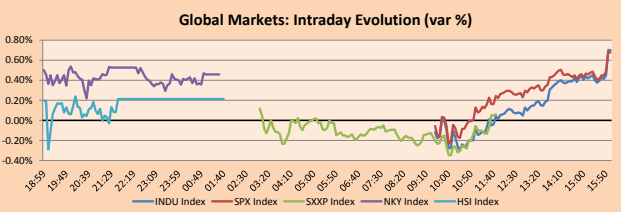
Capital Market Laboratory Coordinator: Economist Bruno Bellido Anicama
Support: Pablo Llanos, Samuel Machucauy, Jorge Retamozo, Marcia Rojas.
e-mail: pulsobursatil@ulima.edu.pe
facebook: www.facebook.com/pulsobursatil.ul
Phone number : 4376767 Annex: 35340

PULSO BURSÁTIL

WORLD

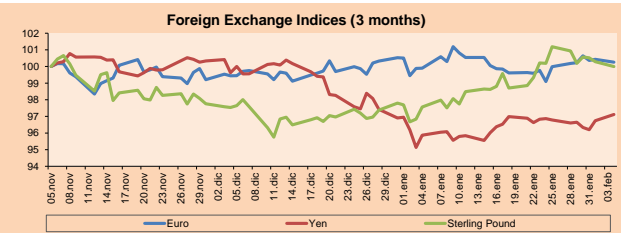
Main Indices	Close	1 D*	5 D*	1 M*	YTD*	Market Cap. (US\$ Mill.)
▲ Dow Jones (USA)	25,239.37	0.70%	2.90%	7.71%	8.20%	6,793,432
▲ Standard & Poor's 500 (USA)	2,724.87	0.68%	3.06%	7.62%	8.70%	23,567,347
▲ NASDAQ Composite (USA)	7,347.54	1.15%	3.70%	9.03%	10.73%	11,323,101
▲ Stoxx EUROPE 600 (Europe)	546.60	0.06%	1.56%	4.82%	6.60%	8,465,643
▲ DAX (Germany)	546.60	0.63%	3.75%	3.80%	5.85%	931,741
▲ FTSE 100 (United Kingdom)	7,034.13	0.20%	4.25%	2.88%	4.55%	1,452,528
▼ CAC 40 (France)	5,000.19	-0.38%	2.28%	5.55%	5.70%	1,318,160
▼ IBEX 35 (Spain)	8,975.20	-0.49%	-0.96%	2.72%	5.10%	489,896
▼ MSCI AC Asia Pacific Index	156.25	-0.25%	1.03%	7.29%	6.50%	17,334,867
▲ HANG SENG (Hong Kong)	27,990.21	0.21%	1.50%	9.23%	8.30%	2,720,517
▲ SHANGHAI SE Comp. (China)	2,618.23	1.32%	0.63%	4.11%	4.80%	4,213,388
▲ NIKKEI 225 (Japan)	20,883.77	0.46%	1.14%	6.76%	4.34%	3,274,713
▲ BOVESPA (Brazil)	98,588.63	0.74%	3.29%	7.35%	12.18%	800,771
▲ MERVAL (Argentina)	37,145.00	1.49%	6.61%	14.99%	22.62%	105,852

*Legend: Variation 1D: 1 Day; 5D: 5 Days; 1M: 1 Month; YTD: Var. % 12/31/18 to date



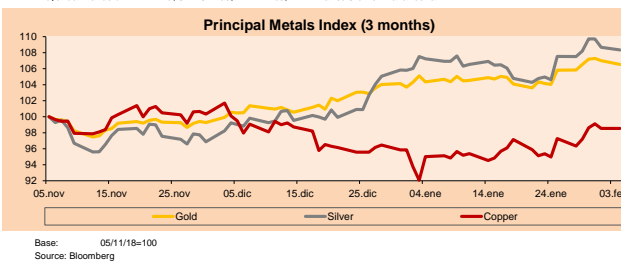
Currency	Price	1 D*	5 D*	1 M*	YTD*
▼ Euro	1.1436	-0.17%	0.07%	0.36%	-0.27%
▲ Yen	109.9100	0.37%	0.51%	1.29%	0.20%
▼ Sterling Pound	1.3040	-0.30%	-0.93%	2.49%	2.24%
▼ Yuan	6.7454	0.00%	0.00%	-1.80%	-1.94%
▼ Hong Kong Dollar	7.8466	0.00%	0.01%	0.15%	0.19%
▼ Brazilian Real	3.6666	0.27%	-2.64%	-1.32%	-5.37%
▲ Argentine Peso	37.1683	0.00%	0.09%	-0.52%	-1.33%

*Legend: Variation 1D: 1 Day; 5D: 5 Days; 1M: 1 Month; YTD: Var. % 12/31/18 to date



Commodities	Close	1 D*	5 D*	1 M*	YTD*
▼ Oro (US\$ Oz. T) (LME)	1,311.69	-0.45%	0.64%	2.07%	2.28%
▼ Plata (US\$ Oz. T) (LME)	15.86	-0.29%	0.77%	1.04%	2.38%
- Cobre (US\$ TM) (LME)	6,115.75	0.00%	2.29%	3.71%	2.80%
- Zinc (US\$ TM) (LME)	2,789.00	0.00%	3.70%	11.12%	10.74%
▼ Petróleo WTI (US\$ Barril) (NYM)	54.76	-0.90%	5.33%	13.42%	19.77%
- Estano (US\$ TM) (LME)	20,985.00	0.00%	0.96%	7.18%	7.51%
- Plomo (US\$ TM) (LME)	2,114.50	0.00%	2.35%	9.11%	5.36%
- Molibdeno (US\$ TM) (LME)	24,881.00	0.00%	0.02%	-0.03%	-0.03%
▲ Azúcar #11 (US\$ Libra) (NYB-ICE)	12.85	1.98%	0.47%	7.71%	6.82%
▲ Cacao (US\$ TM) (NYB-ICE)	2,228.00	2.77%	-0.98%	-5.63%	-7.78%
▲ Café Arábica (US\$ TM) (NYB-ICE)	105.60	1.83%	2.87%	3.94%	3.68%

*Lenda: Variación 1D: 1 Día; 5D: 5 Días; 1M: 1 Mes; YTD: Var. % 31/12/17 a la fecha



Equity

Alemania (Acciones del DAX Index)					Largest losses				
Largest gains	Curr.	Price	▲ %	Exchange	DAX GY	EUR	52.17	-1.62	Xetra
MRK GY	EUR	93.76	1.96	Xetra	DAI GY	EUR	147.66	-1.27	Xetra
BEI GY	EUR	88.54	1.19	Xetra	VOW3 GY	EUR	73.24	-1.21	Xetra
BAYN GY	EUR	67.57	0.90	Xetra	BMW GY	EUR	133.85	-1.14	Xetra
FME GY	EUR	64.08	0.57	Xetra	CON GY	EUR			

Europe (Stocks from STOXX EUROPE 600)					Largest losses				
Largest gains	Curr.	Price	▲ %	Exchange	CABK SQ <th>EUR <td>2.921</td> <td>-4.54</td> <td>Soc Bol SIBX</td> </th>	EUR <td>2.921</td> <td>-4.54</td> <td>Soc Bol SIBX</td>	2.921	-4.54	Soc Bol SIBX
MTRO LN	GBP	1273	6.08	Londres	BAER SE	CHF	37.8	-4.42	SIX Swiss EX
STER FH	EUR	12.09	5.13	Helsinki	SCRE SQ	EUR	12.855	-3.62	Soc Bol SIBX
NEM GY	EUR	120.5	5.06	Xetra	VOE AV	EUR	26.88	-3.10	Vienna
ARGX BB	EUR	98.1	4.58	EN Brussels					

Global Overview:

United States:

The US market closed higher, with Nasdaq (+1.15%) the fastest growing, marking an increase of 20% since its recent decline on December 21, being an exit from the territory of the bear market. The S&P 500 and Dow Jones finished at +0.70% and +0.68%, respectively. Among the main news, according to the United States Trade and Development Agency (UNCTAD) noted that a US plan to increase tariffs in China could trigger an economic slowdown due to instability in commodity markets and would also allow other countries to take over some \$200 billions of Chinese exports. On the other hand, orders for factory products fell 0.6% after strong declines in demand for machinery and electrical equipment, while orders for capital goods fell by the same percentage according to the Commerce Department report. In business news, Alphabet Inc exceeded Wall Street expectations, with last-quarter revenues of \$39.28 billion compared to \$38.93 billion estimated by analysts. Ultimate Software Group (+19.70%) mentioned that it agreed to be bought by a group of investors led by the private company Hellman & Friedman for \$11 billion.

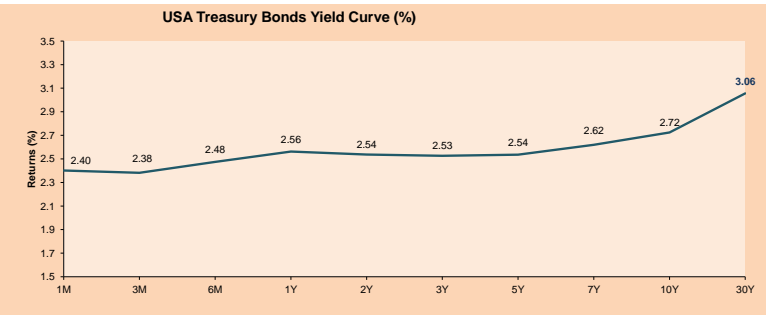
Europe:

The main European markets presented mixed results; the negative performance of the banking sector was contrasted with optimistic US economic figures. The Stoxx Europe 600, which groups shares of companies from 17 countries in the European region, increased only 0.06%, while the British benchmark the FTSE100 rose 0.20% driven by a weaker pound. The Swiss private bank, Julius Baer, fell more than 4% after reporting that the net profit for the second half of 2018 decreased by 18%. The company announced a spending cut of 100 million Swiss francs, which includes a 2% reduction in its staff, after registering a 6MM decline in managed assets. The banking sector has been affected by the prudent position of the European Central Bank, the Eurozone bank index (SX7E) fell by 1.2%, marking the sixth consecutive session in decline, the longest since October 2018. The shares of the banks Sabadell (-4.80%) and CaixaBank (-4.54%) were the most affected and dragged the IBEX 35 (-0.49%).

Asia:

The Asian market closed the day with mixed results among its main indices amid holiday closures and speculation about the next steps in the dispute between the United States and China over technological development and trade after meetings in Washington last week. The Nikkei 225 (+ 0.46%), Topix (+ 1.07%) and Hang Seng (+ 0.21%) registered positive advances while the representative indices of Mainland China and Taiwan were closed during the week for celebrations of the Lunar New Year, same as the indexes of South Korean markets, for the holiday that took place. US and Chinese negotiators ended two days of talks in Washington last week, without a word of agreement, although the ceasefire of tariffs between the US and China is expected to end on March 2, and the US is expected to increase import taxes from 10 to 25 percent for \$ 200 billion in Chinese products. On the other hand, the German Chancellor, Angela Merkel, and the Japanese Prime Minister, Shinzo Abe, announced their desire to avoid a Brexit without agreement, which could alter their economies, given the recent validity of a trade agreement between Japan and the European Union, which eliminated almost all tariffs. In business news, Sony Corp. sank in Tokyo operations after the electronics company reduced its revenue prospects for the year.

ETFs	Curr.	Close	1D	5D	30 D	YTD	Exchange
SPDR S&P 500 ETF TRUST	USD	271.96	0.70%	3.11%	7.75%	8.82%	NYSE Arca
ISHARES MSCI EMERGING MARKET	USD	42.83	0.16%	2.56%	7.91%	9.65%	NYSE Arca
ISHARES IBOXX HIGH YLD CORP	USD	84.88	0.24%	0.71%	3.02%	4.66%	NYSE Arca
FINANCIAL SELECT SECTOR SPDR	USD	26.16	0.42%	0.93%	7.83%	9.82%	NYSE Arca
VANECK VECTORS GOLD MINERS E	USD	22.49	-0.35%	4.85%	5.59%	6.64%	NYSE Arca
ISHARES RUSSELL 2000 ETF	USD	159.96	1.19%	3.01%	10.04%	12.74%	NYSE Arca
SPDR GOLD SHARES	USD	123.96	-0.43%	0.54%	2.08%	2.24%	NYSE Arca
ISHARES 20+ YEAR TREASURY BO	USD	120.42	-0.45%	0.01%	-1.38%	-0.90%	NASDAQ GM
INVESCO QQQ TRUST SERIES 1	USD	169.53	1.24%	3.94%	8.51%	9.90%	NASDAQ GM
ISHARES NASDAQ BIOTECHNOLOGY	USD	110.24	-0.03%	2.78%	7.50%	14.32%	NASDAQ GM
ENERGY SELECT SECTOR SPDR	USD	65.04	0.23%	4.40%	8.64%	13.41%	NYSE Arca
PROSHARES ULTRA VIX ST FUTUR	USD	49.54	-4.79%	-18.26%	-32.64%	-39.39%	NYSE Arca
UNITED STATES OIL FUND LP	USD	11.50	-1.12%	5.02%	12.97%	19.05%	NYSE Arca
ISHARES MSCI BRAZIL ETF	USD	45.46	0.13%	6.04%	8.70%	19.01%	NYSE Arca
SPDR S&P OIL & GAS EXP & PR	USD	30.88	0.59%	2.93%	7.86%	16.40%	NYSE Arca
UTILITIES SELECT SECTOR SPDR	USD	54.64	0.16%	2.96%	3.54%	3.25%	NYSE Arca
ISHARES US REAL ESTATE ETF	USD	83.53	0.67%	2.65%	12.00%	11.46%	NYSE Arca
SPDR S&P BIOTECH ETF	USD	84.34	0.42%	5.30%	12.42%	17.55%	NYSE Arca
ISHARES IBOXX INVESTMENT GRA	USD	115.83	-0.14%	0.70%	2.37%	2.67%	NYSE Arca
ISHARES JP MORGAN USD EMERGI	USD	108.22	-0.34%	0.94%	2.93%	4.15%	NASDAQ GM
REAL ESTATE SELECT SECT SPDR	USD	34.32	0.59%	2.57%	11.65%	10.71%	NYSE Arca
ISHARES CHINA LARGE-CAP ETF	USD	42.79	0.12%	2.27%	8.66%	9.49%	NYSE Arca
CONSUMER STAPLES SPDR	USD	53.56	0.64%	3.10%	4.49%	5.47%	NYSE Arca
VANECK VECTORS JUNIOR GOLD M	USD	32.47	-1.13%	3.80%	3.80%	7.45%	NYSE Arca
SPDR BGC BARC HIGH YIELD BND	USD	35.25	0.23%	0.71%	3.34%	4.94%	NYSE Arca
VANGUARD REAL ESTATE ETF	USD	83.50	0.75%	2.77%	12.35%	11.98%	NYSE Arca



Source: Bloomberg

Capital Market Laboratory Coordinator: Economist Bruno Bellido Anicama
Support: Pablo Llanos, Samuel Machacuy, Jorge Retamozo, Marcia Rojas
e-mail: pulsobursatil@ulima.edu.pe
facebook: www.facebook.com/pulsobursatil.ul
Phone number: 4376767 Annex: 35340



PULSO BURSÁTIL

LIMA

Stocks

Ticker	Currency	Price	1D*	5D*	30D*	YTD*	Frequency	Volume (US\$)	Beta	Dividend Yield (%)	Price Earning	Market Cap. (M US\$)	Economic Sector*	Index Weight
▲ ALICORC1 PE**	S/.	11.55	2.21%	10.53%	15.50%	16.08%	100.00%	2,009,924	0.71	2.08	20.09	2,954.12	Industrial	3.53%
▼ ATACOCB1 PE**	S/.	0.31	-2.82%	-3.13%	0.00%	-3.73%	100.00%	3,196	1.04	0.00	8.46	87.94	Mining	1.02%
▲ BACKUSI1 PE**	S/.	20.30	0.05%	-0.59%	-0.98%	-1.22%	80.00%	12,080	0.46	5.77	8.27	8,313.86	Industrial	0.82%
▲ BAP PE**	US\$	546.60	0.63%	3.75%	7.74%	11.00%	100.00%	236,250	1.08	1.75	-	19,593.40	Diverse	5.82%
▲ BVN PE**	US\$	15.66	1.42%	0.71%	-5.66%	-2.73%	95.00%	34,180	1.38	0.55	-	3,976.97	Mining	5.88%
- CASAGRC1 PE**	S/.	4.00	0.00%	1.27%	-1.48%	-1.48%	100.00%	3,099	0.89	0.47	173.80	101.16	Agricultural	1.31%
▼ CONTINC1 PE**	S/.	3.88	-0.51%	2.11%	0.78%	-1.77%	100.00%	164,324	0.72	3.66	15.03	6,254.18	Finance	2.85%
- CORAREI1 PE**	S/.	0.77	0.00%	1.32%	11.59%	10.00%	100.00%	100,505	1.12	6.82	4.69	332.08	Industrial	1.72%
▼ CPACASC1 PE**	S/.	6.70	-0.30%	2.29%	4.36%	3.88%	95.00%	56,387	0.83	5.63	31.61	859.04	Industrial	2.38%
▲ CVERDEC1 PE**	US\$	20.92	1.06%	2.05%	1.06%	0.58%	100.00%	212,261	0.91	2.73	18.83	7,323.17	Mining	5.25%
- ENGEPEC1 PE**	S/.	2.00	0.00%	0.00%	5.26%	3.09%	70.00%	158	0.74	0.00	9.01	1,704.65	Public Services	1.44%
▼ ENDISPC1**	S/.	5.20	-1.14%	-1.14%	-2.44%	-2.44%	50.00%	23,475	0.80	4.12	9.76	996.98	Public Services	0.98%
▲ FERREY1 PE**	S/.	2.60	0.78%	2.36%	8.33%	2.36%	100.00%	603,594	0.93	5.21	11.30	761.66	Diverse	4.90%
▼ GRAMONC1 PE**	S/.	1.98	-1.00%	-1.49%	10.00%	-0.50%	85.00%	13,630	0.59	0.00	-	392.39	Diverse	4.05%
- IFS PE**	US\$	46.15	0.00%	5.61%	10.14%	9.88%	95.00%	674,159	0.61	3.03	15.62	5,220.07	Diverse	7.22%
▲ INRETC1 PE**	US\$	34.25	0.15%	3.79%	12.63%	21.02%	95.00%	471,054	1.00	0.00	61.76	3,521.15	Diverse	5.28%
▲ LUSURC1 PE**	S/.	10.81	0.09%	0.09%	-1.19%	-1.28%	95.00%	29,074	0.50	6.85	10.57	1,580.48	Public Services	1.81%
- MINSUR1 PE**	S/.	1.48	0.00%	0.00%	8.03%	7.25%	75.00%	42,291	1.35	0.00	0.83	1,281.10	Mining	3.09%
- PML PE**	US\$	0.17	0.00%	6.25%	-9.09%	-2.86%	80.00%	3,400	1.62	0.00	-	44.85	Mining	2.12%
▲ RELAPAC1 PE**	S/.	0.13	0.77%	-1.50%	5.65%	3.97%	100.00%	39,111	0.95	0.00	432.25	139.04	Industrial	2.12%
▲ SCCO PE**	US\$	33.72	0.24%	6.04%	8.25%	10.20%	95.00%	1,635,043	4.15	14.89	26,067.06	Mining	2.14%	
▲ SIDERC1 PE**	S/.	0.65	4.84%	4.84%	18.18%	18.18%	95.00%	110,467	1.41	0.00	6.05	239.64	Industrial	1.43%
- TV PE**	US\$	0.28	0.00%	4.04%	-5.03%	-4.71%	95.00%	71,291	1.76	0.00	-	231.63	Mining	2.93%
▼ UNACEMC1 PE**	S/.	2.69	-0.37%	3.46%	4.26%	3.46%	50.00%	38,487	0.84	1.93	23.26	1,329.82	Industrial	3.00%
▼ VOLCABC1 PE**	S/.	0.74	-1.33%	0.00%	7.25%	4.23%	100.00%	168,540	1.54	1.84	-	2,259.32	Mining	5.90%

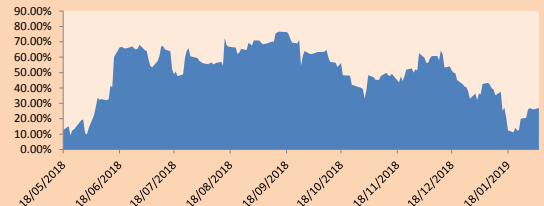
Quantity of shares: 25
 Source: Bloomberg, Economática
 * Bloomberg Industry Classification System
 ** PER is used in the stock market and original currency of the instrument
 *Legend: Variation 1D: 1 Day; 5D: 5 Days; 1M: 1 Month; YTD: Var.% 12/31/18 to date

Sectorial Indices

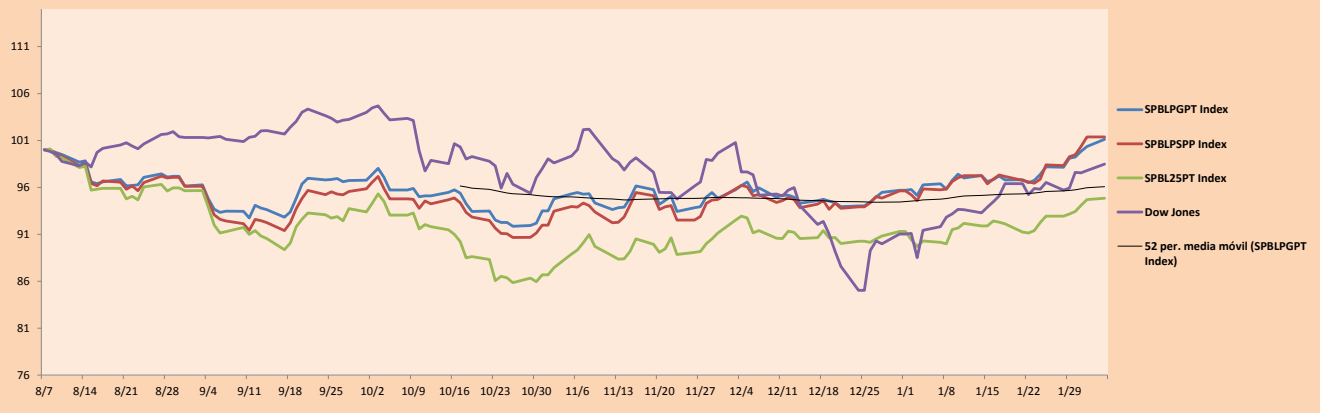
	Close	1D*	5D*	30D*	YTD*	Beta
▲ Mining Index	287.52	0.69%	2.04%	-0.03%	0.94%	1.70
▲ Consumer Index	1,149.44	1.12%	5.86%	11.43%	14.30%	0.42
▲ Industrial Index	233.31	0.03%	1.92%	6.90%	2.83%	0.83
▲ Banking and Financial Index	1,304.34	1.26%	3.55%	6.78%	8.70%	1.07
▼ Construction Index	253.84	-0.39%	1.79%	6.44%	3.24%	0.81
▼ Services Index	392.13	-0.15%	-1.55%	-0.87%	-1.38%	0.10
▲ Juniors Index	27.66	0.11%	2.26%	-6.24%	-6.05%	1.16
▼ Electric Index	382.82	-0.15%	-1.55%	-0.88%	-1.38%	0.10

*Legend: Variation 1D: 1 Day; 5D: 5 Days; 1M: 1 Month; YTD: Var.% 12/31/18 to date

Correlation Graph of Returns of Mining Index against Metallic Index of London (3 months)



Indices (6 months)



Source: Bloomberg

Capital Market Laboratory Coordinator: Economist Bruno Bellido Anicama
 Support: Pablo Llanos, Samuel Machacuay, Jorge Retamozo, Marcia Rojas.
 e-mail: pulsobursatil@ulima.edu.pe
 facebook: www.facebook.com/pulsobursatil.ul
 Phone number : 4376767 Annex: 35340

The content of this document is just for informational purposes. The information and opinions expressed should not be considered as recommendations for future decisions. Under any circumstances, the Capital Market Laboratory of University of Lima will be responsible for the use of the statements in this document.

PULSO BURSÁTIL

SOVEREIGN RATING

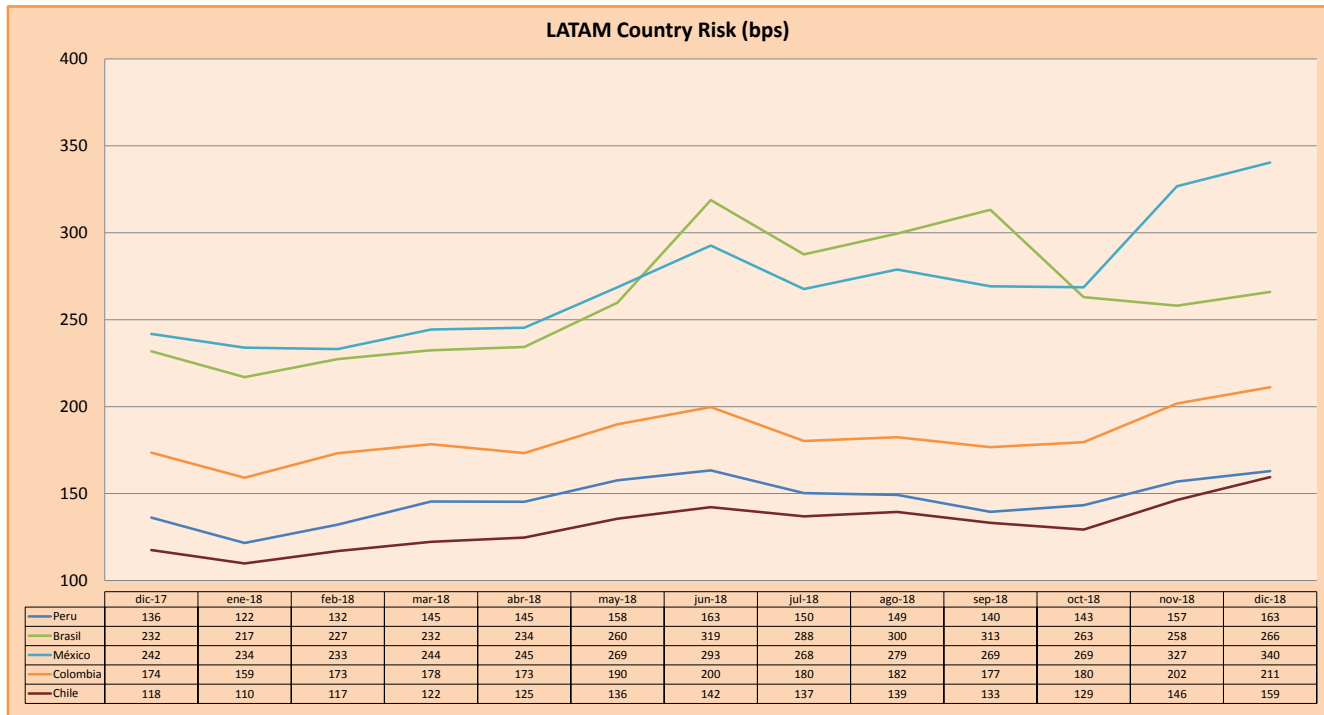
RISK RATINGS

Moody's	S&P	Fitch	
Aaa	AAA	AAA	Prime
Aa1	AA+	AA+	High credit quality
Aa2	AA	AA	
Aa3	AA-	AA-	
A1	A+	A+	Medium-high grade, with low credit risk
A2	A	A	
A3	A-	A-	
Baa1	BBB+	BBB+	Moderate Credit Risk
Baa2	BBB	BBB	
Baa3	BBB-	BBB-	
Ba1	BB+	BB+	It has speculative elements and it is subject to substantial credit risk
Ba2	BB	BB	
Ba3	BB-	BB-	
B1	B+	B+	It is considered speculative and it has high credit risk
B2	B	B	
B3	B-	B-	
Caa1	CCC+		Bad credit conditions and it is subject to high credit risk
Caa2	CCC		
Caa3	CCC-	CCC	
Ca	C		Very close to default or in default
		DDD	
C	D	DD D	

Source: Bloomberg

Latin America Credit Rating			
Clasificadora de riesgo			
Country	Moody's	Fitch	S&P
Peru	A3	BBB+	BBB+
Mexico	A3	BBB+	BBB+
Venezuela	C	C	SD
Brazil	Ba2	BB-	BB-
Colombia	Baa2	BBB	BBB-
Chile	A1	A	A+
Argentina	B2	B	B
Panama	Baa2	BBB	BBB

Source: Bloomberg



Source: BCRP

Capital Market Laboratory Coordinator: Economist Bruno Bellido Anicama
Support: Pablo Llanos, Samuel Machacuay, Jorge Retamozo, Marcia Rojas.
e-mail: pulsohorsatil@ulima.edu.pe
facebook: www.facebook.com/pulsohorsatil.ul
Phone number : 4376767 Annex: 35340

The content of this document is just for informational purposes. The information and opinions expressed should not be consider as recommendations for future decisions. Under any circumstances, the Capital Market Laboratory of University of Lima will be responsible for the use of the statements in this document.