

PULSO BURSÁTIL

Lima, February 22, 2019

MILA

Main Indices	Close	1 D	5 D	1 M	YTD	Market Cap. (US\$ bill)
▲ IPSA (Chile)	5,483.92	0.82%	1.56%	1.53%	7.41%	179.15
▲ IGPA (Chile)	27,638.81	0.67%	1.24%	1.43%	6.51%	242.69
▲ IGBC (Colombia)	12,084.22	0.87%	-0.12%	3.26%	8.44%	102.50
▲ COLCAP (Colombia)	1,491.74	0.90%	0.19%	6.25%	12.51%	104.08
▲ S&P/BVL (Perú)*	20,560.07	0.67%	0.83%	5.36%	6.25%	107.53
▲ S&P/BVL SEL (Perú)	549.79	0.66%	0.76%	6.24%	7.31%	82.88
▲ S&P/BVL LIMA 25	27,369.03	0.64%	-1.08%	3.43%	3.25%	88.98
▲ IPC (México)	43,738.66	0.37%	1.74%	-0.07%	5.04%	277.64
▼ S&P MILA 40	686.35	-0.16%	1.34%	5.08%	12.77%	294.16

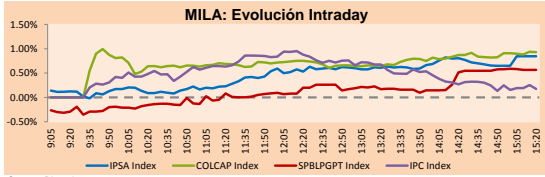
* Market Cap. Of the last price Legend: Variation 1D: 1 day; 5D: 5 days; 1M: 1 Month; YTD: Var%12/31/18 to date

Equity	Exchange	Amt.	Price	▲ %
Largest gains				
VALSIMESA	Colomb.	COP	5300.00	17.78
CONSOGRAL	Santia.	CLP	510.00	8.51
BROCALC1	Lima	PEN	5.15	4.89
TV	Lima	USD	0.29	4.40

Largest losses	Exchange	Amt.	Price	▼ %
ATACOBC1	Lima	PEN	0.31	-2.50
PEHUENCHE	Santia.	CLP	2100.00	-2.32
BESALCO	Santia.	CLP	652.15	-1.95
PML	Lima	USD	0.15	-1.94

Per Turnover	Exchange	Amount (US\$)
PFBCOLM	Colomb.	30,044,807
SQM-B	Santia.	20,009,738
BOCOLOMBIA	Colomb.	17,965,332
AGUAS-A	Santia.	13,744,669
FALABELLA	Santia.	8,429,224

Per Volume	Exchange	Volume
BSANTANDER	Santia.	89,882,173
CHILE	Santia.	40,380,638
VAPORES	Santia.	38,659,743
AGUAS-A	Santia.	22,074,544
Enjoy	Santia.	19,875,611



Source: Bloomberg

Currency	Price	1D*	5D*	30 D*	YTD*
▼ New Sol (PEN)	3,3064	-0.23%	-0.60%	-1.01%	#N/A
▼ Chilean Peso (CLP)	651.05	-0.47%	-1.93%	-3.21%	#N/A
▼ Colombian Peso (COP)	3,105.75	-0.57%	-1.15%	-1.28%	#N/A
▼ Mexican Peso (MXN)	19.14	-0.75%	-0.55%	0.61%	#N/A

*Legend: Variation 1D: 1 day; 5D: 5 days; 1M: 1 Month; YTD: Var%12/31/18 to date

MILA

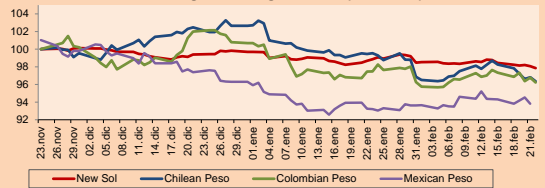
Peru: The General Index of the BVL ended today's session with a positive result of +0.67%. The index maintains a cumulative positive annual trend of +6.25% in local currency, while the adjusted return in dollars amounts to +8.13%. Then, the S & P / BVL Peru SEL did not see variations while the S & P / BVL LIMA 25 increased by +0.64%. The spot PEN reached S / 3.3064. Highlights: Internal demand scored its largest advance in five years in 2018.

Chile: The IPSA index ended the day with a positive return of +0.82%. The sectors of the index with the most positive results were Materials (+1.54%) and Energy (+1.28%). On the other hand, the securities with the highest results were Ripley Corporación SA (+2.27%) and Inversiones La Construcción SA (+1.92%). Highlights: Wall Street climbs to highs of the year and Santiago fits into the positive international climate.

Colombia: The COLCAP index closed the session with a positive result of +0.90%. The sectors with the highest yields were Finance (+1.72%) and Energy (+0.97%). In addition, the highest shares were BanColombia SA (+2.56%) GRUPOSUR (+2.02%). Highlights: Banco de la República announces that the purchase of dollars will continue.

Mexico: The IPC index closed today's session with a positive return of +0.37%. The sectors of the index that generated the most positive results were Material (+1.49%) and Financial (+1.46%). Finally, the stocks with the best returns were Grupo Bimbo SAB de CV Grupo Bimbo SAB de CV (+5.61%) e Industrias Peñoles SAB de CV (+4.92%). Highlights: Banxico will probably reduce its growth estimates in the Quarterly Report of 4Q18.

MILA: Foreign Exchange Indices (3 months)

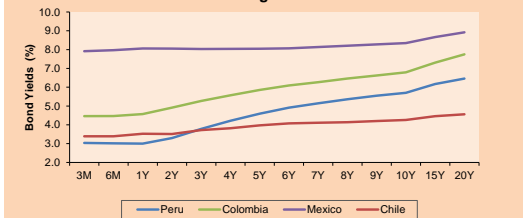


Base: 23/11/18=100
Source: Bloomberg

Fixed Income

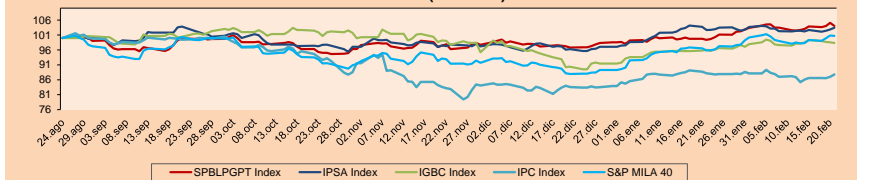
Instrument	Currency	Price	Bid Yield (%)	Ask Yield (%)	Duration
PERU 4.125 08/25/2027	USD	105.993	3.33	3.29	7.19
PERU 7.125 03/30/19	USD	100.579	2.03	-0.10	0.09
PERU 7.35 07/21/25	USD	123.392	3.30	3.25	5.24
PERU 8.75 11/21/33	USD	151.675	4.07	4.04	9.45
PERU 6.55 03/14/37	USD	130.278	4.17	4.13	10.96
PERU 5.625 11/19/2050	USD	122.202	4.34	4.32	16.23
CHILE 2.25 10/30/22	USD	97.806	2.92	2.84	3.47
CHILE 3.875 08/05/20	USD	101.481	2.92	2.72	1.39
CHILE 3.625 10/30/2042	USD	95.745	3.92	3.88	15.58
COLOM 11.75 02/25/20	USD	108.584	3.08	2.83	0.96
COLOM 11.85 03/09/28	USD	156.15	4.33	4.25	6.12
COLOM 10.375 01/28/33	USD	152.288	5.11	5.07	8.62
COLOM 7.375 09/18/37	USD	126.419	5.16	5.14	10.79
COLOM 6.125 01/18/41	USD	113.64	5.10	5.07	12.61
MEX 4 10/02/23	USD	101.025	3.79	3.72	4.11
MEX5.55 01/45	USD	105.051	5.206	5.179	13.96

MILA: Sovereign Yield Curves



Source: Bloomberg

MILA: Stock Indices (6 months)

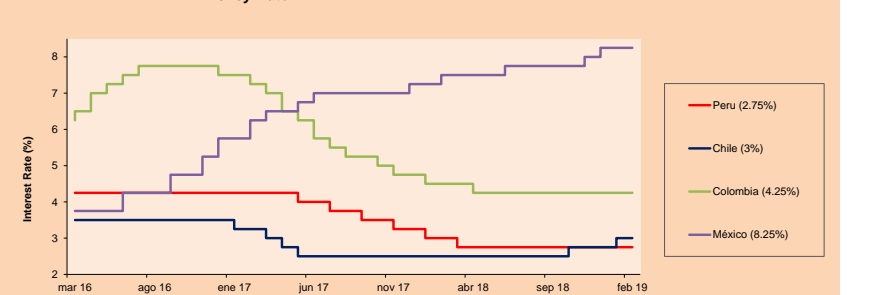


Base: 27/08/18=100
Source: Bloomberg

ETFs

	Curr.	Close	1D	5D	30 D	YTD	Exchange
▲ iShares MSCI All Peru Capped Index Fund	USD	38.7066	1.09%	1.94%	6.78%	#N/A	NYSE Arca
▲ iShares MSCI Chile Capped	USD	47.31	1.52%	3.93%	4.69%	#N/A	Cboe BZX
▲ Global X MSCI Colombia	USD	13.1324	1.25%	1.40%	5.67%	#N/A	NYSE Arca
▲ iShares MSCI Mexico Capped	USD	44.65	1.09%	1.96%	-0.07%	#N/A	NYSE Arca
▲ iShares MSCI Emerging Markets	USD	43.04	1.10%	2.26%	4.34%	#N/A	NYSE Arca
▲ Vanguard FTSE Emerging Markets	USD	41.94	1.14%	2.40%	3.92%	#N/A	NYSE Arca
▲ iShares Core MSCI Emerging Markets	USD	51.75	1.11%	2.19%	4.33%	#N/A	NYSE Arca
▲ iShares JP Morgan Emerging Markets Bonds	USD	59.31	0.90%	1.58%	2.56%	#N/A	Cboe BZX
▲ Morgan Stanley Emerging Markets Domestic	USD	6.78	0.44%	1.19%	3.67%	#N/A	New York

MILA: Policy Rate



Source: Bloomberg

Capital Market Laboratory Coodinator: Economist Bruno Bellido Anicama
Collaboration: Pablo Llanos, Samuel Machacuy, Jorge Retamozo, Marcia Rojas.
e-mail: pulsobursatil@ulima.edu.pe
facebook: www.facebook.com/pulsobursatil.ul
Phone number : 4376767 Annex: 35340



PULSO BURSÁTIL

WORLD

Main Indices	Close	1 D*	5 D*	1 M*	YTD*	Market Cap. (US\$ Mill.)
▲ Dow Jones (USA)	26,031.81	0.70%	2.33%	6.67%	11.59%	6,979,104
▲ Standard & Poor's 500 (USA)	2,792.67	0.64%	1.71%	6.07%	11.40%	24,113,160
▲ NASDAQ Composite (USA)	7,527.55	0.91%	1.35%	7.22%	13.45%	11,594,852
▲ Stoxx EUROPE 600 (Europe)	371.23	0.22%	0.62%	4.55%	9.95%	8,809,716
▲ DAX (Germany)	11,457.70	0.30%	1.40%	3.31%	8.51%	964,205
▲ FTSE 100 (United Kingdom)	7,178.60	0.16%	-0.80%	4.02%	6.70%	1,480,054
▲ CAC 40 (France)	5,215.85	0.38%	1.22%	7.60%	10.26%	1,392,037
▲ IBEX 35 (Spain)	9,204.60	0.15%	0.89%	1.85%	7.78%	507,558
▲ MSCI AC Asia Pacific Index	159.03	0.18%	2.20%	4.11%	8.40%	17,712,806
▲ HANG SENG (Hong Kong)	28,816.30	0.65%	3.23%	4.52%	11.49%	2,799,084
▲ SHANGHAI SE Comp. (China)	2,804.23	1.91%	4.54%	7.78%	12.44%	4,545,389
▲ NIKKEI 225 (Japan)	21,425.51	-0.18%	2.51%	3.14%	7.05%	3,306,381
▲ BOVESPA (Brazil)	97,885.60	0.98%	0.37%	2.93%	11.38%	777,307
▲ Merval (Argentina)	36,646.79	2.22%	-2.20%	7.65%	20.98%	106,575

*Legend: Variation 1D: 1 Day; 5D: 5 Days; 1M: 1 Month; YTD: Var. % 12/31/18 to date

Equity

Alemania (Acciones del DAX Index)				Largest gains				Largest losses						
Ticker	Curr.	Price	▲ %	Exchange	Ticker	Curr.	Price	▼ %	Exchange	Ticker	Curr.	Price	▼ %	Exchange
TKA GY	EUR	13.41	1.71	Xetra	BAYN GY	EUR	67	-1.33	Xetra					
SIE GY	EUR	95.84	1.48	Xetra	BEI GY	EUR	91.42	-1.10	Xetra					
IFX GY	EUR	19.66	1.42	Xetra	BAS GY	EUR	65.25	-0.75	Xetra					
LHA GY	EUR	23.36	1.13	Xetra	RWE GY	EUR	21.94	-0.59	Xetra					

Europe (Stocks from STOXX EUROPE 600)				Largest gains				Largest losses						
Ticker	Curr.	Price	▲ %	Exchange	Ticker	Curr.	Price	▼ %	Exchange	Ticker	Curr.	Price	▼ %	Exchange
ASM NA	EUR	49.26	11.95	EN Amsterdam	IGG LN	GBp	574.5	-5.74	Londres					
MITRO LN	GBp	1430	9.66	Londres	CYBG LN	GBp	187.1	-5.17	Londres					
ISS DC	DKK	212.5	6.73	Copenhagen	ETL FP	EUR	18.22	-4.73	EN Paris					
EDEN FP	EUR	39.8	5.24	EN Paris	BIRG ID	EUR	5.22	-4.04	Dublin					

Global Overview:

United States:

The American market closed up, a little higher than in the last four days. The S&P 500 index (+0.64%) registered its highest closing level since Friday, November 8, as investors clung to the signs of progress in the ongoing trade talks between the United States and China, due to the prolongation of the visit of the Deputy Prime Minister, Liu He, to Washington until the current weekend. On the other hand, spokeswoman Nancy Pelosi said that the House of Representatives of the United States will vote on Tuesday a resolution to stop the declaration of national emergency of President Donald Trump to build a wall on the border with Mexico. In other news, the Canadian Barrick Gold Corp (-2.39%) considers making an offer of shares by its American rival Newmont Mining Corp (+3.02%), which would create a month in the world gold sector and would probably push its smaller pairs to start buying each other. In business news, shares of Kraft Heinz Co (-2.75%) fell to a record low a day after the food company revealed a reduction of \$5 billion in its brands, which increased concern that Years of rigorous cost cuts have eroded the value of his Kraft Cheeses and Oscar Mayer cold meats.

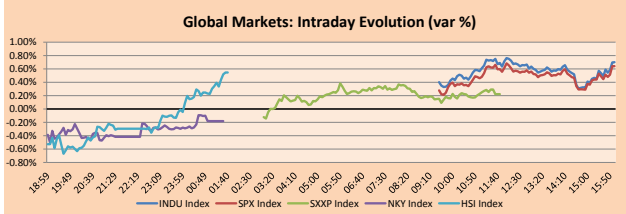
Europe:

The European market closed higher amid investor optimism about trade talks between the United States and China. The FTSE rose +0.16%, driven by heavyweight mining companies, led by Evraz PLC (+3.39%), Fresnilco PLC (+0.46%) and Glencore PLC (+2.73%). Likewise, British retailers plan the smallest investment in seven years before the departure of the United Kingdom from the EU (European Union), after the investment intentions fell to -33 in February compared to -3 in November 2018, with the lowest level since February 2012. The DAX advanced +0.30%, highlighting that data published by the Federal Statistics Office indicated that the German economy stagnated in the fourth quarter of 2018. Private consumption contributed only 0.1% to growth, while exports and imports increased 0.7%, so net trade did not contribute. However, higher government spending helped avoid a recession in the period analyzed. In other news, the EU is drawing up a list of retaliatory tariffs targeting Caterpillar Inc, Xerox Corp, and Samsonite International if Donald Trump imposes tariffs on imports of European cars, Bloomberg News reported. France and Germany agreed on a proposal for a eurozone budget instrument with the purpose of boosting growth, strengthening competitiveness and reducing the development gap between individual member states through political proposals of the European Commission.

Asia:

The main Asian stock indices closed the day with mixed results, the Japanese benchmark index, the Nikkei 225 (-0.18%), closed down for the first time in five days, impacted by disappointing US economic data. The US Department of Commerce reported that US core capital goods orders drop, unexpectedly in December, 0.7% when markets estimated a slight increase of 0.2%. In the same tone, the Philadelphia Federal Reserve indicator, which measures economic activity in the Mid-Atlantic region, declined in February and reached its lowest level since 2016. These notices were offset by investors' optimism about the future of the Sino-US negotiations, while the deadline to reach an agreement is getting closer, some flexibility is foreseen if significant advances are in track. Shares in the Japanese financial sector were hit, such as Mitsubishi UFJ Financial Group which fell 1.2%, while exporters such as Honda Motor Corp rose 0.7%. Finally, the Chinese market was less negatively impacted, with the Hang Seng ending at +0.65% and the Shanghai Composite at +1.91%.

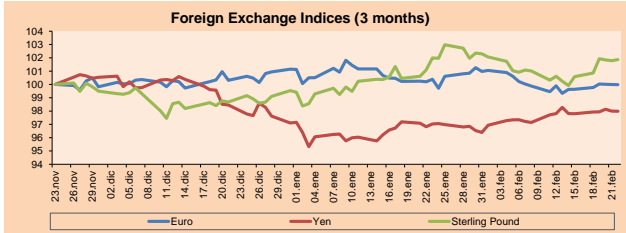
ETFs	Curr.	Close	1D	5D	30 D	YTD	Exchange
SPDR S&P 500 ETF TRUST	USD	279.14	0.62%	0.64%	5.97%	#N/A	NYSE Arca
ISHARES MSCI EMERGING MARKET	USD	43.04	1.10%	2.26%	4.34%	#N/A	NYSE Arca
ISHARES IBOXX HIGH YLD CORP	USD	85.59	0.20%	0.22%	2.23%	#N/A	NYSE Arca
FINANCIAL SELECT SECTOR SPDR	USD	26.46	-0.15%	0.11%	2.84%	#N/A	NYSE Arca
VANECK VECTORS GOLD MINERS E	USD	23.06	0.35%	2.81%	12.54%	#N/A	NYSE Arca
ISHARES RUSSELL 2000 ETF	USD	198.15	0.87%	1.24%	9.37%	#N/A	NYSE Arca
SPDR GOLD SHARES	USD	125.50	0.36%	0.56%	3.48%	#N/A	NYSE Arca
ISHARES 20+ YEAR TREASURY BO	USD	121.57	0.60%	-0.34%	1.27%	#N/A	NASDAQ GM
INVESTCO QQQ TRUST SERIES I	USD	172.89	0.74%	0.55%	6.62%	#N/A	NASDAQ GM
ISHARES NASDAQ BIOTECHNOLOGY	USD	110.71	1.43%	-1.19%	2.69%	#N/A	NASDAQ GM
ENERGY SELECT SECTOR SPDR	USD	65.76	0.29%	-0.54%	6.39%	#N/A	NYSE Arca
PROSHARES ULTRA VIX ST FUTUR	USD	42.13	-5.58%	-9.38%	-33.65%	#N/A	NYSE Arca
UNITED STATES OIL FUND LP	USD	11.95	0.59%	2.05%	8.14%	#N/A	NYSE Arca
ISHARES MSCI BRAZIL ETF	USD	44.15	1.38%	-0.67%	1.99%	#N/A	NYSE Arca
SPDR S&P OIL & GAS EXP & PR	USD	30.63	0.86%	-1.19%	2.79%	#N/A	NYSE Arca
UTILITIES SELECT SECTOR SPDR	USD	57.05	0.62%	2.41%	6.08%	#N/A	NYSE Arca
ISHARES US REAL ESTATE ETF	USD	84.99	0.53%	-0.07%	7.00%	#N/A	NYSE Arca
SPDR S&P BIOTECH ETF	USD	85.74	1.98%	-0.98%	7.47%	#N/A	NYSE Arca
ISHARES IBOXX INVESTMENT GRA	USD	116.38	0.45%	0.14%	1.82%	#N/A	NYSE Arca
ISHARES JP MORGAN USD EMERGI	USD	108.77	0.62%	0.50%	1.80%	#N/A	NASDAQ GM
REAL ESTATE SELECT SECT SPDR	USD	35.08	0.57%	0.23%	7.54%	#N/A	NYSE Arca
ISHARES CHINA LARGE-CAP ETF	USD	44.14	1.71%	3.54%	7.71%	#N/A	NYSE Arca
CONSUMER STAPLES SPDR	USD	54.43	-0.48%	0.15%	3.50%	#N/A	NYSE Arca
VANECK VECTORS JUNIOR GOLD M	USD	33.86	0.42%	2.76%	14.16%	#N/A	NYSE Arca
SPDR BBG BARC HIGH YIELD BND	USD	35.59	0.17%	0.25%	2.37%	#N/A	NYSE Arca
VANGUARD REAL ESTATE ETF	USD	85.12	0.59%	0.04%	7.47%	#N/A	NYSE Arca



Source: Bloomberg

Currency	Price	1 D*	5 D*	1 M*	YTD*
▼ Euro	1.1335	-0.01%	0.35%	-0.40%	#N/A
▼ Yen	110.6900	-0.01%	0.20%	0.99%	#N/A
▲ Sterling Pound	1.3053	0.08%	1.27%	-0.12%	#N/A
▲ Yuan	6.7137	-0.13%	-0.88%	-1.15%	#N/A
▲ Hong Kong Dollar	7.8484	0.01%	0.00%	0.04%	#N/A
▲ Brazilian Real	3.7470	-0.42%	1.23%	-0.33%	#N/A
▼ Argentine Peso	38.1838	-0.84%	1.53%	4.35%	#N/A

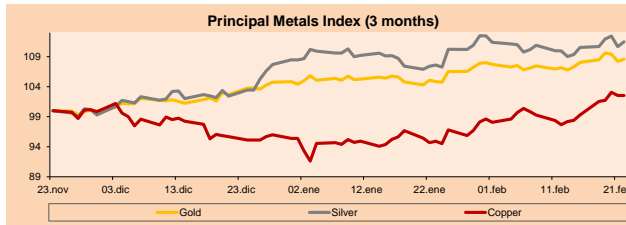
*Legend: Variation 1D: 1 Day; 5D: 5 Days; 1M: 1 Month; YTD: Var. % 12/31/18 to date



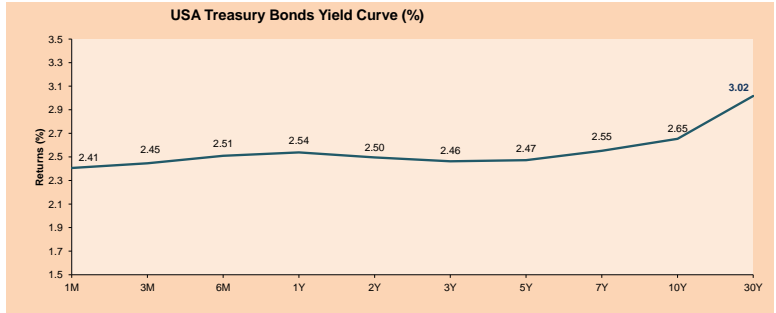
Base: 23/11/18=100
Source: Bloomberg

Commodities	Close	1 D*	5 D*	1 M*	YTD*
▲ Oro (US\$ Oz. T) (LME)	1,328.25	0.36%	0.51%	3.55%	#N/A
▲ Plata (US\$ Oz. T) (LME)	15.92	0.73%	0.86%	3.60%	#N/A
- Cobre (US\$ TM) (LME)	6,394.50	0.00%	3.25%	8.03%	#N/A
- Zinc (US\$ TM) (LME)	2,703.50	0.00%	1.98%	2.87%	#N/A
▲ Petróleo WTI (US\$ Barril) (NYM)	57.14	0.32%	2.07%	7.97%	#N/A
- Estano (US\$ TM) (LME)	21,508.00	0.00%	1.21%	3.33%	#N/A
- Plomo (US\$ TM) (LME)	2,057.75	0.00%	-0.40%	1.82%	#N/A
- Molibdeno (US\$ TM) (LME)	24,888.00	0.00%	0.01%	0.05%	#N/A
▲ Azúcar #11 (US\$ Libra) (NYB-ICE)	13.30	0.76%	2.31%	1.68%	#N/A
▲ Cacao (US\$ TM) (NYB-ICE)	2,288.00	0.57%	-2.18%	0.39%	#N/A
▲ Café Arábica (US\$ TM) (NYB-ICE)	100.00	0.55%	-1.62%	-6.24%	#N/A

*Lenda: Variación 1D: 1 Día; 5D: 5 Días; 1M: 1 Mes; YTD: Var. % 31/12/17 a la fecha



Base: 23/11/18=100
Source: Bloomberg



Source: Bloomberg

Capital Market Laboratory Coordinator: Economist Bruno Bellido Anicama
Collaboration: Pablo Llanos, Samuel Machacay, Jorge Retamozo, Marcia Rojas
e-mail: pulsobursatil@ulima.edu.pe
facebook: www.facebook.com/pulsobursatil.ul
Phone number: 4376767 Annex: 35340



PULSO BURSÁTIL

LIMA

Stocks

Ticker	Currency	Price	1D*	5D*	30D*	YTD*	Frequency	Volume (US\$)	Beta	Dividend Yield (%)	Price Earning	Market Cap. (M US\$)	Economic Sector*	Index Weight
▲ ALICORC1 PE**	S/.	11.26	0.54%	-0.79%	10.39%	#N/A	100.00%	298,444	0.70	2.13	19.58	2,904.34	Industrial	3.53%
▼ ATACOCB1 PE**	S/.	0.31	-2.50%	-10.86%	-0.95%	#N/A	100.00%	6,535	0.81	0.00	8.58	89.15	Mining	1.02%
▲ BACKUH1 PE**	S/.	20.15	0.75%	0.75%	-1.32%	#N/A	80.00%	7,604	0.46	5.82	8.20	8,331.63	Industrial	0.82%
▲ BAP PE**	US\$	242.10	1.38%	1.30%	3.33%	#N/A	100.00%	694,985	1.09	1.78	-	19,310.25	Diverse	5.82%
▲ BVN PE**	US\$	16.95	2.42%	2.67%	11.51%	#N/A	100.00%	55,785	1.29	0.51	-	4,663.14	Mining	5.88%
▼ CASAGRC1 PE**	S/.	3.92	-0.25%	-0.76%	-1.75%	#N/A	100.00%	1,541	0.84	0.48	170.32	99.87	Agricultural	1.31%
- CONTINC1 PE**	S/.	3.80	0.00%	-0.26%	0.00%	#N/A	100.00%	91,138	0.69	3.74	14.18	6,170.06	Finance	2.85%
- CORAREI1 PE**	S/.	0.77	0.00%	-1.28%	6.94%	#N/A	100.00%	10,030	1.10	6.82	4.69	334.51	Industrial	1.72%
- CPACASC1 PE**	S/.	6.45	0.00%	-1.68%	-0.77%	#N/A	100.00%	188,319	0.79	5.85	35.83	835.13	Industrial	2.38%
▲ CVERDEC1 PE**	US\$	24.02	4.21%	11.72%	20.10%	#N/A	100.00%	146,991	0.96	2.38	21.62	8,408.35	Mining	5.25%
- ENGEPEC1 PE**	S/.	2.10	0.00%	-0.47%	7.69%	#N/A	80.00%	65,278	0.73	8.30	9.46	1,802.98	Public Services	1.44%
- ENDISPC1**	S/.	5.20	0.00%	-0.95%	-1.33%	#N/A	60.00%	33,008	0.80	0.00	9.76	1,004.27	Public Services	0.98%
▼ FERREYC1 PE**	S/.	2.56	-0.39%	-3.76%	3.64%	#N/A	100.00%	330,567	0.93	5.29	11.13	755.43	Diverse	4.90%
▲ GRAMONC1 PE**	S/.	1.85	3.93%	-0.54%	-5.61%	#N/A	85.00%	10,952	0.54	0.00	17.60	369.31	Diverse	4.05%
▼ IFS PE**	US\$	45.75	-0.54%	-2.66%	5.17%	#N/A	100.00%	715,384	0.60	3.06	15.27	5,174.82	Diverse	7.22%
- INRETC1 PE**	US\$	34.00	0.00%	1.49%	4.62%	#N/A	100.00%	1,232,364	1.00	0.00	60.87	3,495.45	Diverse	5.28%
▼ LUSURC1 PE**	S/.	11.10	-0.89%	-1.33%	2.78%	#N/A	95.00%	73,011	0.48	6.67	10.85	1,634.76	Public Services	1.81%
▲ MINSURH1 PE**	S/.	1.76	3.53%	11.39%	21.38%	#N/A	90.00%	70,235	1.37	0.00	1.00	1,534.62	Mining	3.09%
▼ PML PE**	US\$	0.15	-1.94%	-10.59%	-5.00%	#N/A	60.00%	143,542	1.60	0.00	-	40.10	Mining	2.12%
▲ RELAPAC1 PE**	S/.	0.15	1.38%	4.26%	8.89%	#N/A	100.00%	5,557	0.75	0.00	488.55	157.16	Industrial	2.12%
▲ SCCO PE**	US\$	35.60	0.20%	9.20%	16.86%	#N/A	100.00%	2,278		5.46	17.80	27,518.80	Mining	2.14%
- SIDERC1 PE**	S/.	0.69	0.00%	1.47%	18.97%	#N/A	100.00%	15,413	1.42	0.00	6.43	256.25	Industrial	1.43%
▲ TV PE**	US\$	0.29	4.40%	5.56%	14.00%	#N/A	100.00%	18,152	1.81	0.00	-	233.27	Mining	2.93%
▲ UNACEMC1 PE**	S/.	2.66	2.31%	-0.75%	9.11%	#N/A	80.00%	38,554	0.77	1.95	23.00	1,324.61	Industrial	3.00%
- VOLCABC1 PE**	S/.	0.66	0.00%	-8.33%	-10.81%	#N/A	100.00%	104,578	1.34	2.07	-	2,216.74	Mining	5.90%

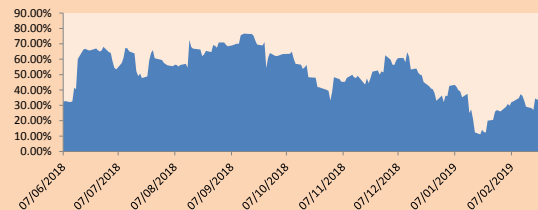
Quantity of shares: 25
 Source: Bloomberg, Económica
 * Bloomberg Industry Classification System
 ** PER is used in the stock market and original currency of the instrument
 *Legend: Variation 1D: 1 Day; 5D: 5 Days; 1M: 1 Month; YTD: Var.% 12/31/18 to date

Sectorial Indices

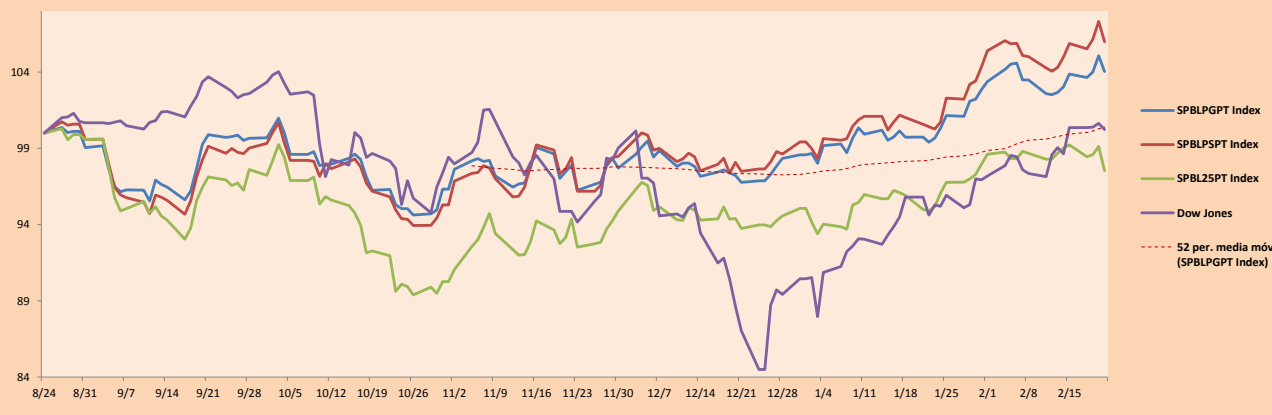
	Close	1D*	5D*	30D*	YTD*	Beta
▲ Mining Index	305.89	1.15%	3.93%	10.80%	#N/A	1.63
▲ Consumer Index	1,128.61	0.15%	-0.10%	5.85%	#N/A	0.42
▲ Industrial Index	228.06	0.93%	-1.75%	2.41%	#N/A	0.79
▲ Banking and Financial Index	1,279.51	0.76%	0.11%	2.42%	#N/A	1.16
▲ Construction Index	246.38	1.68%	-0.79%	1.80%	#N/A	0.75
▼ Services Index	401.82	-0.23%	-0.37%	1.47%	#N/A	0.06
▼ Juniors Index	26.23	-1.98%	-6.65%	-2.64%	#N/A	1.02
▼ Electric Index	392.27	-0.23%	-0.37%	1.47%	#N/A	0.06

*Legend: Variation 1D: 1 Day; 5D: 5 Days; 1M: 1 Month; YTD: Var.% 12/31/18 to date

Correlation Graph of Returns of Mining Index against Metallic Index of London (3 months)



Indices (6 months)



Source: Bloomberg

Capital Market Laboratory Coordinator: Economist Bruno Bellido Anicama
 Collaboration: Pablo Llanos, Samuel Machacuy, Jorge Retamozo, Marcia Rojas.
 e-mail: pulsobursatil@ulima.edu.pe
 facebook: www.facebook.com/pulsobursatil.ul
 Phone number : 4376767 Annex: 35340

The content of this document is just for informational purposes. The information and opinions expressed should not be considered as recommendations for future decisions. Under any circumstances, the Capital Market Laboratory of University of Lima will be responsible for the use of the statements in this document.

PULSO BURSÁTIL

SOVEREIGN RATING

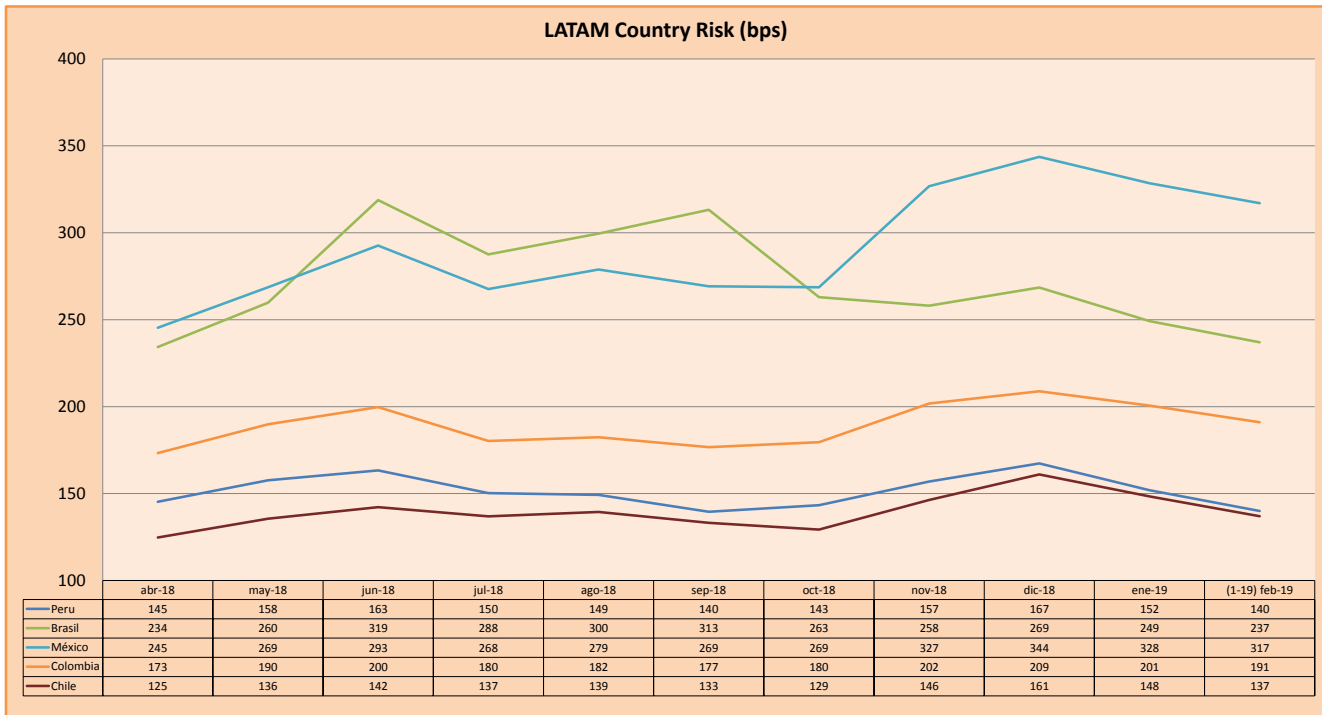
RISK RATINGS

Moody's	S&P	Fitch	
Aaa	AAA	AAA	Prime
Aa1	AA+	AA+	High credit quality
Aa2	AA	AA	
Aa3	AA-	AA-	
A1	A+	A+	Medium-high grade, with low credit risk
A2	A	A	
A3	A-	A-	
Baa1	BBB+	BBB+	Moderate Credit Risk
Baa2	BBB	BBB	
Baa3	BBB-	BBB-	
Ba1	BB+	BB+	It has speculative elements and it is subject to substantial credit risk
Ba2	BB	BB	
Ba3	BB-	BB-	
B1	B+	B+	It is considered speculative and it has high credit risk
B2	B	B	
B3	B-	B-	
Caa1	CCC+		Bad credit conditions and it is subject to high credit risk
Caa2	CCC		
Caa3	CCC-	CCC	
Ca	C		Very close to default or in default
		DDD	
C	D	DD D	

Source: Bloomberg

Latin America Credit Rating			
Clasificadora de riesgo			
Country	Moody's	Fitch	S&P
Peru	A3	BBB+	BBB+
Mexico	A3	BBB+	BBB+
Venezuela	C	C	SD
Brazil	Ba2	BB-	BB-
Colombia	Baa2	BBB	BBB-
Chile	A1	A	A+
Argentina	B2	B	B
Panama	Baa2	BBB	BBB

Source: Bloomberg



Source: BCRP

Capital Market Laboratory Coordinator: Economist Bruno Bellido Anicama
Support: Pablo Llanos, Samuel Machacuay, Jorge Retamozo, Marcia Rojas.
e-mail: pulsobursatil@ulima.edu.pe
facebook: www.facebook.com/pulsobursatil.ul
Phone number : 4376767 Annex: 35340

The content of this document is just for informational purposes. The information and opinions expressed should not be considered as recommendations for future decisions. Under any circumstances, the Capital Market Laboratory of University of Lima will be responsible for the use of the statements in this document.