



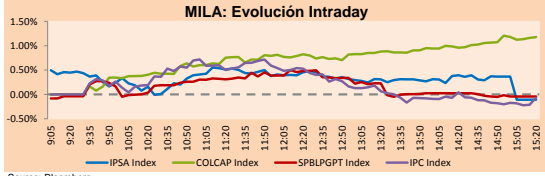
PULSO BURSÁTIL

Lima, February 25, 2019

MILA

Main Indices	Close	1 D	5 D	1 M	YTD	Market Cap. (US\$ bill)
▼ IPSA (Chile)	5,479.69	-0.08%	2.04%	0.70%	7.33%	180.98
▼ IGPA (Chile)	27,620.97	-0.06%	1.53%	0.89%	6.44%	244.67
▲ IGBC (Colombia)	12,227.77	1.19%	1.36%	3.87%	9.72%	103.09
▲ COLCAP (Colombia)	1,509.88	1.22%	1.83%	5.92%	13.87%	104.83
▲ S&P/BVL (Perú)*	20,561.13	0.01%	1.06%	3.55%	6.26%	108.41
▲ S&P/BVL SEL (Perú)	550.02	0.04%	1.14%	4.33%	7.35%	83.77
▼ S&P/BVL LIMA 25	27,344.58	-0.09%	-0.39%	1.34%	3.16%	89.67
▼ IPC (México)	43,720.85	-0.14%	1.62%	0.09%	4.89%	279.72
▲ S&P MILA 40	695.46	1.33%	3.02%	4.90%	14.27%	297.80

* Market Cap. Of the last price Legend: Variation 1D: 1 day; 5D: 5 days; 1M: 1 Month; YTD: Var%12/31/18 to date

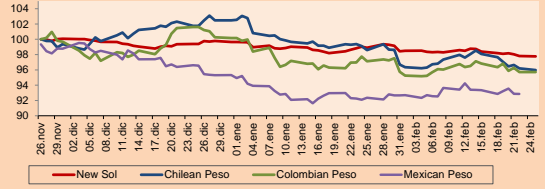


Source: Bloomberg

Currency	Price	1D*	5D*	30 D*	YTD*
▼ New Sol (PEN)	3,305.0	-0.04%	-0.43%	-1.16%	#N/A
▼ Chilean Peso (CLP)	649.57	-0.23%	-1.73%	-2.64%	#N/A
▼ Colombian Peso (COP)	3,105.55	-0.01%	-0.67%	-1.46%	#N/A
▼ Mexican Peso (MXN)	19.14	-0.02%	-0.54%	0.81%	#N/A

*Legend: Variation 1D: 1 day; 5D: 5 days; 1M: 1 Month; YTD: Var%12/31/18 to date

MILA: Foreign Exchange Indices (3 months)

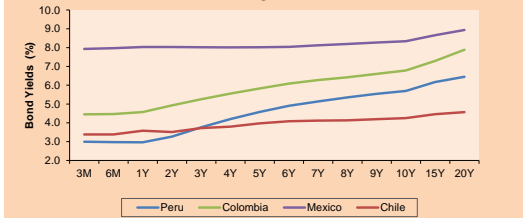


Base: 26/11/18=100 Source: Bloomberg

Fixed Income

Instrument	Currency	Price	Bid Yield (%)	Ask Yield (%)	Duration
PERU 4.125 08/25/2027	USD	105.964	3.33	3.29	7.19
PERU 7.125 03/30/19	USD	100.575	2.08	-0.42	0.09
PERU 7.35 07/21/25	USD	123.359	3.30	3.25	5.24
PERU 8.75 11/21/33	USD	151.686	4.07	4.04	9.45
PERU 6.55 03/14/37	USD	130.227	4.17	4.13	10.98
PERU 5.625 11/19/2050	USD	122.214	4.34	4.32	16.26
CHILE 2.25 10/30/22	USD	97.786	2.91	2.87	3.47
CHILE 3.875 08/05/20	USD	101.487	2.92	2.71	1.39
CHILE 3.625 10/30/2042	USD	95.691	3.93	3.89	15.59
COLOM 11.75 02/25/20	USD	108.582	3.08	2.78	0.96
COLOM 11.85 03/09/28	USD	156.217	4.32	4.24	6.12
COLOM 10.375 01/28/33	USD	151.565	5.20	5.09	8.60
COLOM 7.375 09/18/37	USD	126.335	5.17	5.14	10.81
COLOM 6.125 01/18/41	USD	113.652	5.10	5.07	12.64
MEX 4 10/02/23	USD	100.837	3.83	3.77	4.10
MEX5.55 01/45	USD	104.768	5.218	5.206	14.01

MILA: Sovereign Yield Curves



Source: Bloomberg

Equity

Largest gains	Exchange	Amt.	Price	▲ %
MIRL	Lima	USD	0.04	11.11
ESTRA	Colomb.	COP	139.00	6.92
SQM-A	Santia.	CLP	29000.00	6.23
SCCO	Lima	USD	36.80	3.37

Per Turnover	Exchange	Amount (US\$)
SQM-B	Santia.	18,509,445
PFBOCOL	Colomb.	13,525,479
ECOPETROL	Colomb.	9,481,541
CHILE	Santia.	8,780,319
BSANTANDER	Santia.	6,844,842

Largest losses	Exchange	Amt.	Price	▼ %
BVN	Lima	USD	16.55	-2.36
CONTINC1	Lima	PEN	3.72	-2.11
CONSOGRAL	Santia.	CLP	500.00	-1.96
CNEC	Colomb.	COP	9990.00	-1.87

Per Volume	Exchange	Volume
ORO BLANCO	Santia.	118,394,698
BSANTANDER	Santia.	84,028,450
CHILE	Santia.	54,021,981
VAPORES	Santia.	28,885,533
AGUAS-A	Santia.	9,831,591

MILA

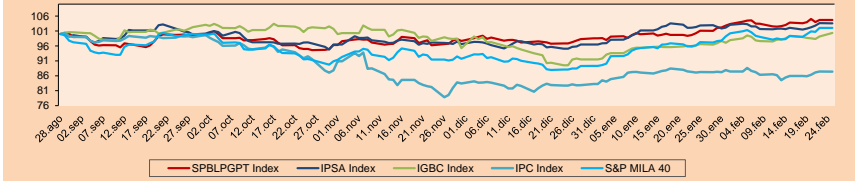
Peru: The General Index of the BVL ended today's session with a positive result of + 0.01%. The index maintains a cumulative positive annual trend of + 6.26% in local currency, while the adjusted yield in dollars amounts to + 8.31%. Then, the S & P / BVL Peru SEL increased by + 0.04% while the S & P / BVL LIMA 25 decreased by -0.09%. The spot PEN reached S / 3.3064. Highlight: Peruvian stock market closes with slight rise for papers linked to the consumption and mining sector.

Chile: The IPSA index ended the day with a negative return of -0.08%. The sectors of the index with the most negative results were Products of first necessity (0.62%) and Information technology (-0.40%). On the other hand, the securities with the lowest results were Banco Santander Chile (-1.32%) Cencosud SA (-1.17%). Highlight: Goldman Sachs reduces growth prospects for Chile.

Colombia: The COLCAP index closed the session with a positive result of +1.22%. The sectors with the highest yields were Industrial (+ 3.28%) and Energy (+ 2.06%). In addition, the highest shares were Avianca Holdings SA (+ 3.91%) and Empresa de Energía de Bogotá (+ 2.90%). Highlight: Ecopetrol announced a 4.1% YOY of reserves increases of 1.66 billion.

Mexico: The IPC index closed today's session with a negative yield of -0.17%. The sectors of the index that generated the most negative results were Communication Services (-0.94%) and Products of first necessity (-0.61%). Finally, the stocks with the worst returns were Grupo Televisa SA (-1.77%) and CEMEX SAB de CV (-1.46%). Highlight: The Mexican peso falls as the government backs tariffs and textiles.

MILA: Stock Indices (6 months)

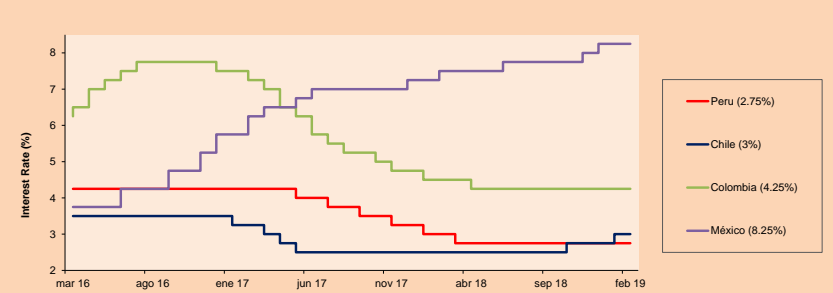


Base: 29/08/18=100 Source: Bloomberg

ETFs

ETFs	Curr.	Close	1D	5D	30 D	YTD	Exchange
▼ iShares MSCI All Peru Capped Index Fund	USD	38.58	-0.33%	1.61%	4.55%	#N/A	NYSE Arca
▲ iShares MSCI Chile Capped	USD	47.51	0.42%	4.37%	4.21%	#N/A	Cboe BZX
▲ Global X MSCI Colombia	USD	13.32	1.43%	2.85%	6.65%	#N/A	NYSE Arca
▲ iShares MSCI Mexico Capped	USD	44.77	0.27%	2.24%	-0.09%	#N/A	NYSE Arca
▲ iShares MSCI Emerging Markets	USD	43.52	1.12%	3.40%	3.13%	#N/A	NYSE Arca
▲ Vanguard FTSE Emerging Markets	USD	42.4	1.34%	3.77%	3.41%	#N/A	NYSE Arca
▲ iShares Core MSCI Emerging Markets	USD	52.27	1.00%	3.22%	3.12%	#N/A	NYSE Arca
▲ iShares JP Morgan Emerging Markets Bonds	USD	59.76	0.76%	2.35%	2.10%	#N/A	Cboe BZX
- Morgan Stanley Emerging Markets Domestic	USD	6.78	0.00%	1.19%	3.35%	#N/A	New York

MILA: Policy Rate



Source: Bloomberg

Capital Market Laboratory Coordinator: Economist Bruno Bellido Anicam
Collaboration: Pablo Llanos, Samuel Machacay, Jorge Retamozo, Marcia Rojas.
e-mail: pulsobursatil@ulima.edu.pe
facebook: www.facebook.com/pulsobursatil.ul
Phone number : 4376767 Annex: 35340

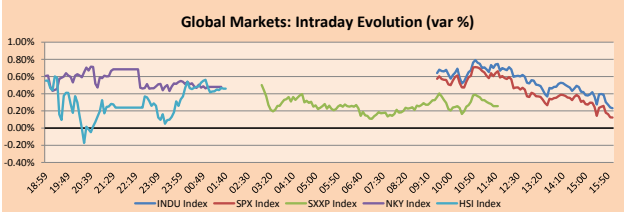


PULSO BURSÁTIL

WORLD

Main Indices	Close	1 D*	5 D*	1 M*	YTD*	Market Cap. (US\$ Mill.)
▲ Dow Jones (USA)	26,091.95	0.23%	0.81%	5.48%	11.85%	7,035,199
▲ Standard & Poor's 500 (USA)	2,796.11	0.12%	0.74%	4.93%	11.54%	24,243,023
▲ NASDAQ Composite (USA)	7,554.46	0.36%	1.10%	5.44%	13.85%	11,690,729
▲ Stoxx EUROPE 600 (Europe)	372.18	0.26%	0.65%	4.01%	10.23%	8,790,268
▲ DAX (Germany)	11,505.39	0.42%	1.82%	1.98%	8.99%	962,083
▲ FTSE 100 (United Kingdom)	7,183.74	0.07%	-0.40%	5.50%	6.77%	1,474,815
▲ CAC 40 (France)	5,231.85	0.31%	1.22%	6.21%	10.59%	1,388,974
▼ IBEX 35 (Spain)	9,204.30	0.00%	0.53%	0.21%	7.78%	506,441
▲ MSCI AC Asia Pacific Index	159.56	0.33%	1.44%	3.03%	8.76%	17,860,815
▲ HANG SENG (Hong Kong)	28,359.30	0.50%	2.16%	5.04%	12.05%	2,813,560
▲ SHANGHAI SEC Comp. (China)	2,961.28	5.60%	7.61%	13.82%	16.74%	4,817,469
▲ NIKKEI 225 (Japan)	21,528.23	0.48%	1.16%	3.63%	7.56%	3,312,282
▼ BOVESPA (Brazil)	97,275.74	-0.59%	0.83%	-0.38%	10.72%	780,653
▼ MERVAL (Argentina)	36,332.03	-0.86%	-2.74%	4.37%	19.94%	106,826

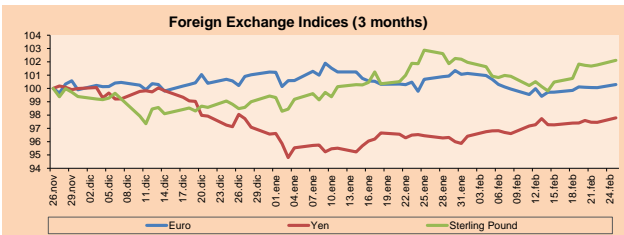
*Legend: Variation 1D: 1 Day; 5D: 5 Days; 1M: 1 Month; YTD: Var.% 12/31/18 to date



Source: Bloomberg

Currency	Price	1 D*	5 D*	1 M*	YTD*
▲ Euro	1.1360	0.22%	0.43%	-0.40%	#N/A
▲ Yen	111.0600	0.33%	0.40%	1.38%	#N/A
▲ Sterling Pound	1.3099	0.35%	1.35%	-0.74%	#N/A
▼ Yuan	6.6891	-0.37%	-1.15%	-0.88%	#N/A
▲ Hong Kong Dollar	7.8488	0.01%	0.01%	0.04%	#N/A
▲ Brazilian Real	3.7476	0.02%	0.33%	-0.38%	#N/A
▼ Argentine Peso	38.0347	-0.41%	0.65%	5.34%	#N/A

*Legend: Variation 1D: 1 Day; 5D: 5 Days; 1M: 1 Month; YTD: Var.% 12/31/18 to date

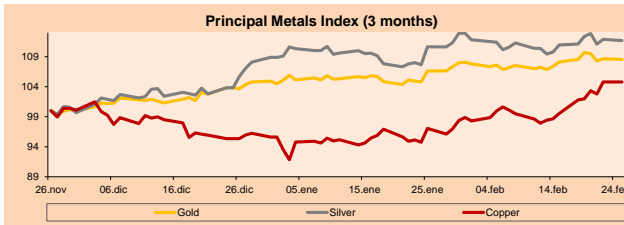


Base: 26/11/18=100

Source: Bloomberg

Commodities	Close	1 D*	5 D*	1 M*	YTD*
▼ Oro (US\$ Oz. T) (LME)	1,327.01	-0.09%	0.01%	1.83%	#N/A
▼ Plata (US\$ Oz. T) (LME)	15.88	-0.20%	0.51%	0.93%	#N/A
▲ Cobre (US\$ TM) (LME)	6,519.00	0.00%	2.94%	7.98%	#N/A
▲ Zinc (US\$ TM) (LME)	2,742.50	0.00%	3.28%	2.24%	#N/A
▼ Petróleo WTI (US\$ Barril) (NYM)	55.37	-3.30%	-1.09%	2.58%	#N/A
▲ Estano (US\$ TM) (LME)	21,680.00	0.00%	2.36%	-4.16%	#N/A
▲ Plomo (US\$ TM) (LME)	2,063.75	0.00%	2.39%	-1.98%	#N/A
▲ Molibdeno (US\$ TM) (LME)	24,888.00	0.00%	0.01%	0.03%	#N/A
▼ Azúcar #11 (US\$ Libra) (NYB-ICE)	13.00	-2.26%	0.00%	3.26%	#N/A
▼ Cacao (US\$ TM) (NYB-ICE)	2,256.00	-1.40%	-3.55%	-0.35%	#N/A
▼ Café Arabica (US\$ TM) (NYB-ICE)	99.85	-0.16%	-1.77%	-9.14%	#N/A

*Lenda: Variación 1D: 1 Día; 5D: 5 Días; 1M: 1 Mes; YTD: Var.% 31/12/17 a la fecha



Base: 26/11/18=100

Source: Bloomberg

Equity

Alemania (Acciones del DAX Index)				Largest gains				Largest losses			
ADS GY	Curr.	Price	▲ %	Exchange	VNA GY	Curr.	Price	▼ %	Exchange		
EUR	210.3	3.04	Xetra	EUR	43.13	-1.46	Xetra				
EUR	20.17	2.59	Xetra	EUR	95.32	-0.91	Xetra				
EUR	53.44	2.38	Xetra	EUR	64.79	-0.71	Xetra				
EUR	13.705	2.20	Xetra	EUR	14.58	-0.68	Xetra				

Europe (Stocks from STOXX EUROPE 600)

Largest gains				Largest losses					
AMS SE	CHF	Price	▲ %	Exchange	PSON LN	Curr.	Price	▼ %	Exchange
EUR	32.28	5.22	SIX Swiss Ex	GBP	854.2	-5.40	Londres		
EUR	2.436	4.82	Borsa Italiana	DKK	151.2	-5.08	Copenhagen		
EUR	40.7	4.31	Xetra	GBP	2352	-4.70	Londres		
EUR	27.26	4.13	Xetra	GBP	551	-4.09	Londres		

Global Overview:

United States:

The market of the United States became the best moment in the commercial holders, soon in the president Donald Trump, in Sunday, in the night, in which the tariffs are planned on the Chinese imports before the "substantial advances". In other news, US wholesale inventories UUI increase in greater quantity in more than five years in December, due to a fall in sales for the third consecutive month, which represents an accumulation of unwanted products in wholesalers that may be marking a deceleration in demand. On the other hand, oil futures sank more than 3%, after Trump argued that OPEC should soften its approach to increase oil prices, since they are "going too high". In business news, General Electric (+ 6.39%) affirm that to sell its business of biopharma to Danaher Corp (+ 8.52%) for \$ 21.4 million in the biggest investment of the strategy since Lawrence Culp assumed the position of executive director of the industrial conglomerate in September.

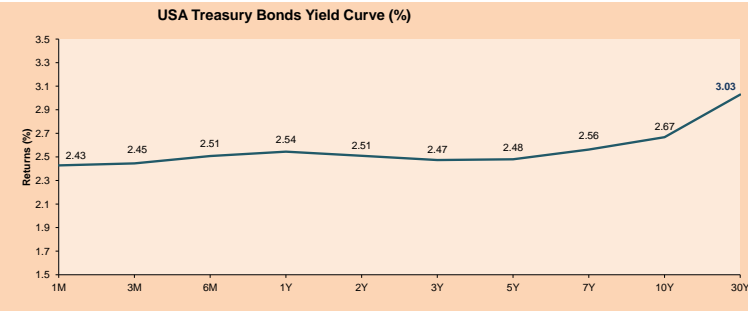
Europe:

The European market closed with positive returns during the day. After Trump postponed tariffs on Chinese products, the European market indexes, such as the German DAX (+ 0.42%) or the European composite index, Stoxx 600 (+ 0.26%), increased and ended the green area. On the other hand, the UK's first minister, Theresa May, also postponed Parliament's vote on its Brexit strategy until March 12, a tactic described as "a big bet" by Think Markets' market analysts. During the day, the Persimmon PLC (+ 4.70%) lost value after the finance minister, James Brokenshire, lowered the budget for the government's construction plans project, also known as "Help to Buy". In addition, in the financial sector, the Bank of Ireland (- 8%) lost value after the institution announced that its 2018 profits fell due to the lower margin for lower interest rates. Simultaneously, AstraZeneca PLC (+ 2.13%) rose after the pharmaceutical pharmacy said that its prototype drug was successful in one of its tests on sheep.

Asia:

The Asian market closed higher among its main indices, after US President Donald Trump mentioned that the deadline for an increase in tariffs on Chinese imports would be postponed, which is a substantial progress. In Mainland China, according to FactSet Research, the Shanghai Composite (+5.60%) obtained its best one-day percentage gain since June 2015; likewise, the shares rose a little more than 20% from the minimum of January 2, fulfilling the definition of the bull market. In corporate news, Nintendo 7974 (+ 0.97%) and Sony (+1.20%) increased in Japan, helping the Nikkei 225 index (+0.48%) to profit. In other news, according to what was mentioned by the Vice President of the China Insurance and Banking Regulatory Commission, Wang Zhaoxing, the world's second largest economy has met its objective of reducing debt levels, but will continue to take measures against interest rates. In addition, they mentioned that the level of leverage stabilized last year, meeting the goal, after growing an average of more than 10 percent a year.

ETFs	Curr.	Close	1D	5D	30 D	YTD	Exchange
SPDR S&P 500 ETF TRUST	USD	279.59	0.16%	0.40%	5.20%	#N/A	NYSE Arca
ISHARES MSCI EMERGING MARKET	USD	43.52	1.12%	3.40%	3.13%	#N/A	NYSE Arca
ISHARES IBOXX HIGH YLD CORP	USD	85.66	0.08%	0.30%	1.95%	#N/A	NYSE Arca
FINANCIAL SELECT SECTOR SPDR	USD	26.57	0.42%	0.53%	2.19%	#N/A	NYSE Arca
VANECK VECTORS GOLD MINERS E	USD	22.77	-1.26%	1.52%	7.51%	#N/A	NYSE Arca
ISHARES RUSSELL 2000 ETF	USD	158.19	0.03%	1.28%	7.36%	#N/A	NYSE Arca
SPDR GOLD SHARES	USD	125.37	-0.10%	0.46%	2.04%	#N/A	NYSE Arca
ISHARES 20+ YEAR TREASURY BO	USD	121.21	-0.30%	-0.93%	0.79%	#N/A	NASDAQ GM
INVESCO QQQ TRUST SERIES I	USD	173.52	0.36%	0.92%	5.07%	#N/A	NASDAQ GM
ISHARES NASDAQ BIOTECHNOLOGY	USD	112.96	2.03%	0.82%	3.22%	#N/A	NASDAQ GM
ENERGY SELECT SECTOR SPDR	USD	65.87	0.17%	-0.38%	-4.67%	#N/A	NYSE Arca
PROSHARES ULTRA VIX ST FUTUR	USD	43.21	2.58%	-7.06%	-24.15%	#N/A	NYSE Arca
UNITED STATES OIL FUND LP	USD	11.57	-3.18%	-1.20%	2.84%	#N/A	NYSE Arca
ISHARES MSCI BRAZIL ETF	USD	43.92	-0.52%	-1.19%	0.23%	#N/A	NYSE Arca
SPDR S&P OIL & GAS EXP & PR	USD	30.58	-0.16%	-1.35%	0.16%	#N/A	NYSE Arca
UTILITIES SELECT SECTOR SPDR	USD	56.68	-0.65%	1.74%	6.30%	#N/A	NYSE Arca
ISHARES US REAL ESTATE ETF	USD	84.37	-0.73%	-0.80%	4.63%	#N/A	NYSE Arca
SPDR S&P BIOTECH ETF	USD	89.53	4.42%	3.40%	8.69%	#N/A	NYSE Arca
ISHARES IBOXX INVESTMENT GRA	USD	116.34	-0.03%	0.10%	1.43%	#N/A	NYSE Arca
ISHARES JP MORGAN USD EMERGI	USD	108.59	-0.17%	0.33%	1.24%	#N/A	NASDAQ GM
REAL ESTATE SELECT SECT SPDR	USD	34.79	-0.83%	-0.60%	5.01%	#N/A	NYSE Arca
ISHARES CHINA LARGE-CAP ETF	USD	45.04	2.04%	5.65%	6.76%	#N/A	NYSE Arca
CONSUMER STAPLES SPDR	USD	54.13	-0.55%	-0.40%	4.64%	#N/A	NYSE Arca
VANECK VECTORS JUNIOR GOLD M	USD	33.23	-1.86%	0.85%	8.59%	#N/A	NYSE Arca
SPDR BBG BARC HIGH YIELD BND	USD	35.62	0.08%	0.34%	2.10%	#N/A	NYSE Arca
VANGUARD REAL ESTATE ETF	USD	84.45	-0.79%	-0.75%	4.96%	#N/A	NYSE Arca



Source: Bloomberg

Capital Market Laboratory Coordinator: Economist Bruno Bellido Anicama
Collaboration: Pablo Llanos, Samuel Machacuy, Jorge Retamozo, Marcia Rojas
e-mail: pulsobursatil@ulima.edu.pe
facebook: www.facebook.com/pulsobursatil.31
Phone number: 4376767 Annex: 35340

The content of this document is just for informational purposes. The information and opinions expressed should not be considered as recommendations for future decisions. Under any circumstances, the Capital Market Laboratory of University of Lima will be responsible for the use of the statements in this document.



PULSO BURSÁTIL

LIMA

Stocks

Ticker	Currency	Price	1D*	5D*	30D*	YTD*	Frequency	Volume (US\$)	Beta	Dividend Yield (%)	Price Earning	Market Cap. (M US\$)	Economic Sector*	Index Weight
▲ ALICORC1 PE**	S/.	11.30	0.36%	0.89%	7.11%	#N/A	100.00%	1,304,231	0.70	2.12	19.65	2,915.83	Industrial	3.53%
▲ ATACOBC1 PE**	S/.	0.31	0.00%	-4.88%	-2.50%	#N/A	100.00%	24,431	0.74	0.00	8.58	89.19	Mining	1.02%
- BACKUSI1 PE**	S/.	20.15	0.00%	0.75%	-1.32%	#N/A	80.00%	4,024	0.46	5.82	8.20	8,335.15	Industrial	0.82%
▼ BAP PE**	US\$	241.60	-0.21%	1.09%	2.33%	#N/A	95.00%	803,528	1.09	1.78	-	19,270.37	Diverse	5.82%
▼ BVN PE**	US\$	16.55	-2.36%	0.00%	6.77%	#N/A	100.00%	44,254	1.27	0.52	-	4,553.19	Mining	5.88%
- CASAGRC1 PE**	S/.	3.92	0.00%	-0.76%	-0.76%	#N/A	100.00%	2,327	0.84	0.48	170.32	99.91	Agricultural	1.31%
▼ CONTINC1 PE**	S/.	3.72	-2.11%	-2.11%	-2.62%	#N/A	95.00%	2,742,352	0.69	3.82	13.88	6,042.72	Finance	2.85%
- CORAREI1 PE**	S/.	0.77	0.00%	-1.28%	4.05%	#N/A	100.00%	7,735	1.12	6.82	4.69	337.50	Industrial	1.72%
- CPACASC1 PE**	S/.	6.45	0.00%	-0.77%	-1.53%	#N/A	95.00%	1,512	0.78	0.00	35.83	835.49	Industrial	2.38%
▼ CVERDEC1 PE**	US\$	23.80	-0.92%	10.70%	16.10%	#N/A	95.00%	179,409	1.02	2.40	21.42	8,331.33	Mining	5.25%
- ENGEPEC1 PE**	S/.	2.10	0.00%	0.96%	5.00%	#N/A	75.00%	65,306	0.73	0.00	9.46	1,803.75	Public Services	1.44%
- ENDISPC1**	S/.	5.20	0.00%	-0.95%	-1.14%	#N/A	55.00%	33,022	0.80	0.00	9.76	1,004.70	Public Services	0.98%
▼ FERREYC1 PE**	S/.	2.55	-0.39%	-4.14%	0.39%	#N/A	100.00%	310,513	0.92	5.31	11.08	752.80	Diverse	4.90%
▲ GRAMONC1 PE**	S/.	1.87	1.08%	2.19%	-6.97%	#N/A	90.00%	6,960	0.57	0.00	17.79	373.46	Diverse	4.05%
- IFS PE**	US\$	45.75	0.00%	-2.66%	4.69%	#N/A	90.00%	46	0.60	0.00	15.27	5,174.82	Diverse	7.22%
▲ INRETC1 PE**	US\$	34.50	1.47%	1.47%	4.55%	#N/A	100.00%	1,421,250	1.00	0.00	61.74	3,546.85	Diverse	5.28%
- LUSURC1 PE**	S/.	11.10	0.00%	-1.33%	2.78%	#N/A	95.00%	160,250	0.47	6.67	10.85	1,635.45	Public Services	1.81%
▼ MINSURH1 PE**	S/.	1.75	-0.57%	10.76%	18.24%	#N/A	90.00%	44,131	1.38	0.00	0.99	1,526.55	Mining	3.09%
▲ PML PE**	US\$	0.15	0.66%	-10.00%	-4.38%	#N/A	60.00%	20,571	1.59	0.00	-	40.37	Mining	2.12%
▲ RELAPAC1 PE**	S/.	0.15	0.68%	4.96%	13.85%	#N/A	95.00%	26,592	0.73	0.00	492.10	158.29	Industrial	2.12%
▲ SCCO PE**	US\$	36.80	3.37%	12.88%	17.64%	#N/A	95.00%	1,414,091	5.28	18.40	28,446.40	Mining	2.14%	
▼ SIDERC1 PE**	S/.	0.68	-1.45%	-1.45%	13.33%	#N/A	100.00%	25,030	1.41	0.00	6.33	252.64	Industrial	1.43%
▲ TV PE**	US\$	0.29	1.75%	3.57%	7.41%	#N/A	95.00%	76,403	1.82	0.00	-	237.36	Mining	2.93%
- UNACEMC1 PE**	S/.	2.66	0.00%	0.00%	2.82%	#N/A	85.00%	27,089	0.79	1.95	23.00	1,325.17	Industrial	3.00%
- VOLCABC1 PE**	S/.	0.66	0.00%	-4.35%	-12.00%	#N/A	100.00%	328,365	1.27	2.07	-	2,217.68	Mining	5.90%

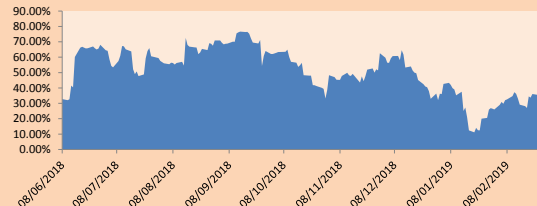
Quantity of shares: 25
 Source: Bloomberg, Económica
 * Bloomberg Industry Classification System
 ** PER is used in the stock market and original currency of the instrument
 *Legend: Variation 1D: 1 Day; 5D: 5 Days; 1M: 1 Month; YTD: Var.% 12/31/18 to date

Sectorial Indices

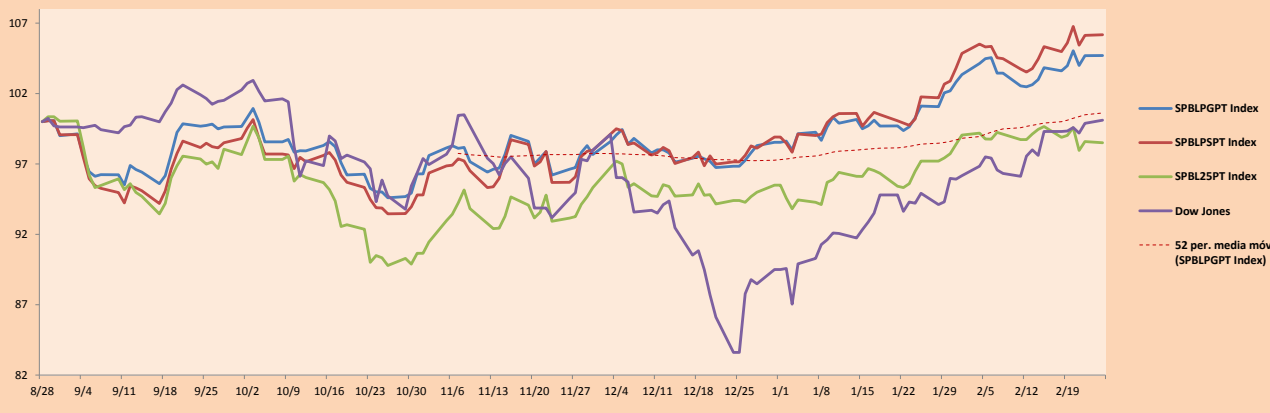
	Close	1D*	5D*	30D*	YTD*	Beta
▲ Mining Index	306.14	0.08%	4.24%	8.63%	#N/A	1.62
▲ Consumer Index	1,136.35	0.69%	0.69%	4.34%	#N/A	0.42
▲ Industrial Index	228.26	0.09%	-1.12%	-0.18%	#N/A	0.80
▼ Banking and Financial Index	1,274.88	-0.36%	-0.11%	1.24%	#N/A	1.17
▲ Construction Index	247.23	0.34%	0.45%	-0.74%	#N/A	0.77
- Services Index	401.82	0.00%	-0.31%	0.88%	#N/A	0.06
▲ Juniors Index	26.29	0.23%	-6.31%	-2.52%	#N/A	0.95
- Electric Index	392.27	0.00%	-0.31%	0.88%	#N/A	0.06

*Legend: Variation 1D: 1 Day; 5D: 5 Days; 1M: 1 Month; YTD: Var.% 12/31/18 to date

Correlation Graph of Returns of Mining Index against Metallic Index of London (3 months)



Indices (6 months)



Source: Bloomberg

Capital Market Laboratory Coordinator: Economist Bruno Bellido Anicama
 Collaboration: Pablo Llanos, Samuel Machacay, Jorge Retamozo, Marcia Rojas.
 e-mail: pulsobursatil@ulima.edu.pe
 facebook: www.facebook.com/pulsobursatil.ul
 Phone number : 4376767 Annex: 35340

The content of this document is just for informational purposes. The information and opinions expressed should not be considered as recommendations for future decisions. Under any circumstances, the Capital Market Laboratory of University of Lima will be responsible for the use of the statements in this document.



PULSO BURSÁTIL

SOVEREIGN RATING

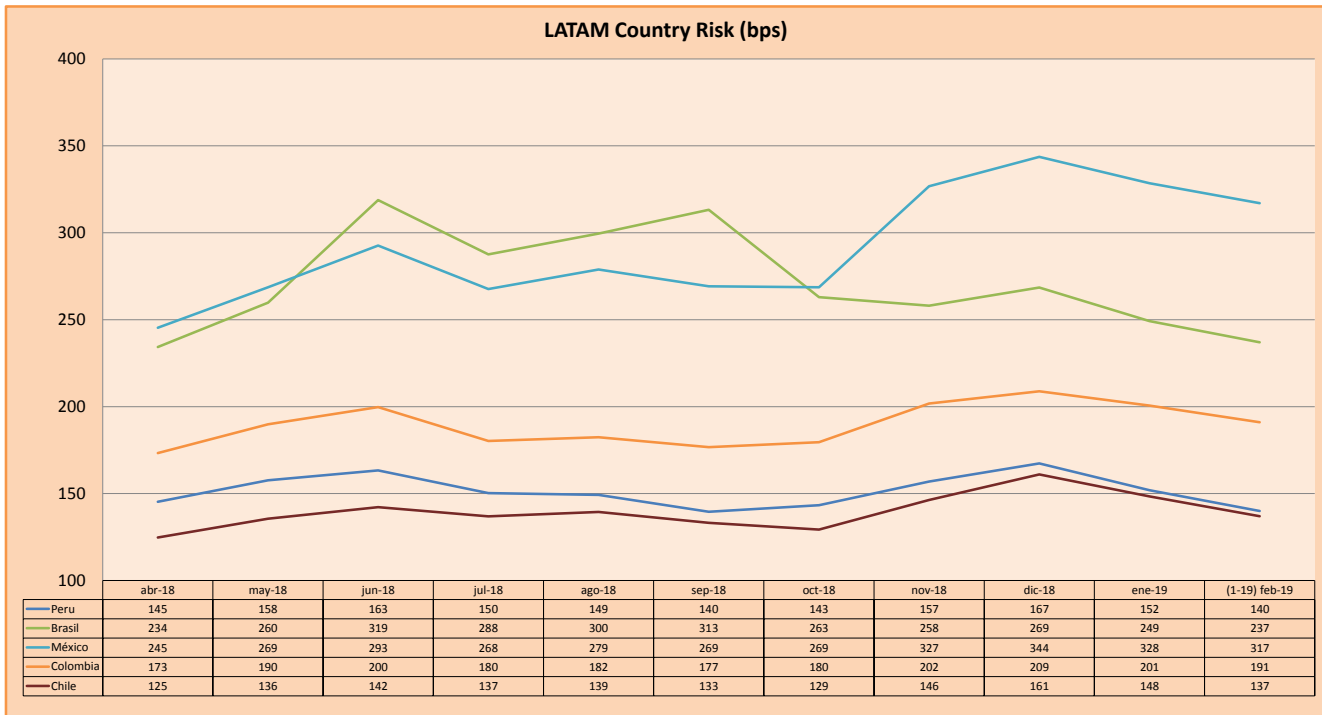
RISK RATINGS

Moody's	S&P	Fitch	
Aaa	AAA	AAA	Prime
Aa1	AA+	AA+	High credit quality
Aa2	AA	AA	
Aa3	AA-	AA-	
A1	A+	A+	Medium-high grade, with low credit risk
A2	A	A	
A3	A-	A-	
Baa1	BBB+	BBB+	Moderate Credit Risk
Baa2	BBB	BBB	
Baa3	BBB-	BBB-	
Ba1	BB+	BB+	It has speculative elements and it is subject to substantial credit risk
Ba2	BB	BB	
Ba3	BB-	BB-	
B1	B+	B+	It is considered speculative and it has high credit risk
B2	B	B	
B3	B-	B-	
Caa1	CCC+		Bad credit conditions and it is subject to high credit risk
Caa2	CCC		
Caa3	CCC-	CCC	
Ca	C		Very close to default or in default
		DDD	
C	D	DD D	

Source: Bloomberg

Latin America Credit Rating			
Clasificadora de riesgo			
Country	Moody's	Fitch	S&P
Peru	A3	BBB+	BBB+
Mexico	A3	BBB+	BBB+
Venezuela	C	C	SD
Brazil	Ba2	BB-	BB-
Colombia	Baa2	BBB	BBB-
Chile	A1	A	A+
Argentina	B2	B	B
Panama	Baa2	BBB	BBB

Source: Bloomberg



Source: BCRP

Capital Market Laboratory Coordinator: Economist Bruno Bellido Anicama
 Support: Pablo Llanos, Samuel Machacuay, Jorge Retamozo, Marcia Rojas.
 e-mail: pulsobursatil@ulima.edu.pe
 facebook: www.facebook.com/pulsobursatil.ul
 Phone number : 4376767 Annex: 35340

The content of this document is just for informational purposes. The information and opinions expressed should not be considered as recommendations for future decisions. Under any circumstances, the Capital Market Laboratory of University of Lima will be responsible for the use of the statements in this document.