

PULSO BURSÁTIL

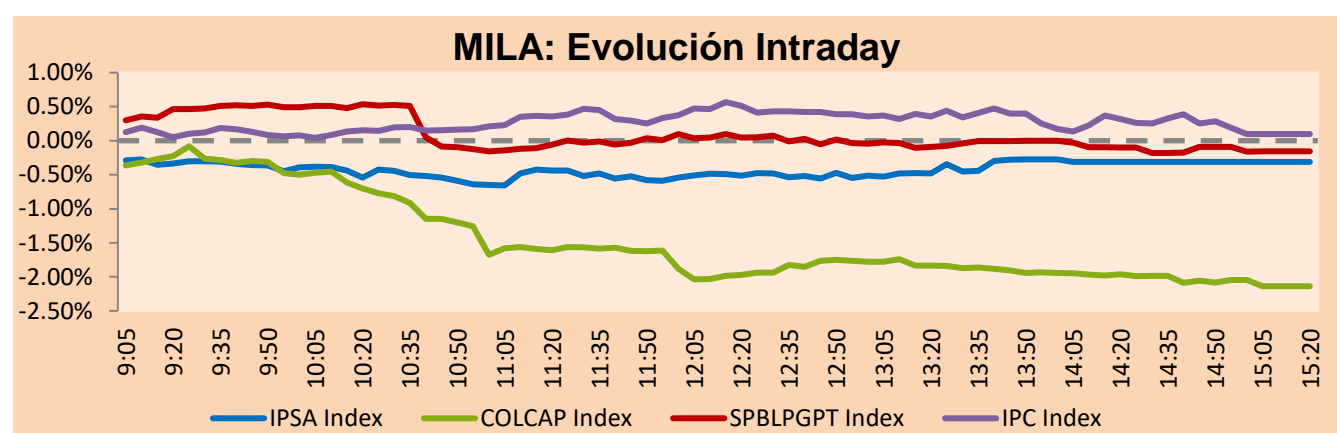
Lima, March 27, 2019

MILA

Main Indices	Close	1 D	5 D	1 M	YTD	Market Cap. (US\$ bill)
▼ IPSA (Chile)	5,174.14	-0.32%	-1.35%	-3.69%	1.35%	162.69
▼ IGPA (Chile)	26,248.56	-0.28%	-1.14%	-3.29%	1.15%	208.97
▼ IGBC (Colombia)	12,915.28	-1.93%	-1.92%	4.75%	15.89%	110.08
▼ COLCAP (Colombia)	1,572.68	-2.14%	-2.54%	3.70%	18.61%	112.03
▼ S&P/BVL (Perú)*	20,997.10	-0.16%	-0.93%	2.08%	8.51%	111.52
▲ S&P/BVL SEL (Perú)	559.61	0.11%	-1.01%	1.81%	9.22%	84.46
▼ S&P/BVL LIMA 25	27,761.84	-0.26%	-1.29%	1.43%	4.73%	92.42
▲ IPC (México)	42,947.55	0.10%	-0.67%	-1.02%	2.95%	273.07
▲ S&P MILA 40	677.00	0.04%	-2.96%	-2.56%	11.23%	291.28

* Market Cap. Of the last price

*Legend: Variation 1D: 1 day; 5D: 5 days; 1M: 1 Month; YTD: Var%12/31/18 to date

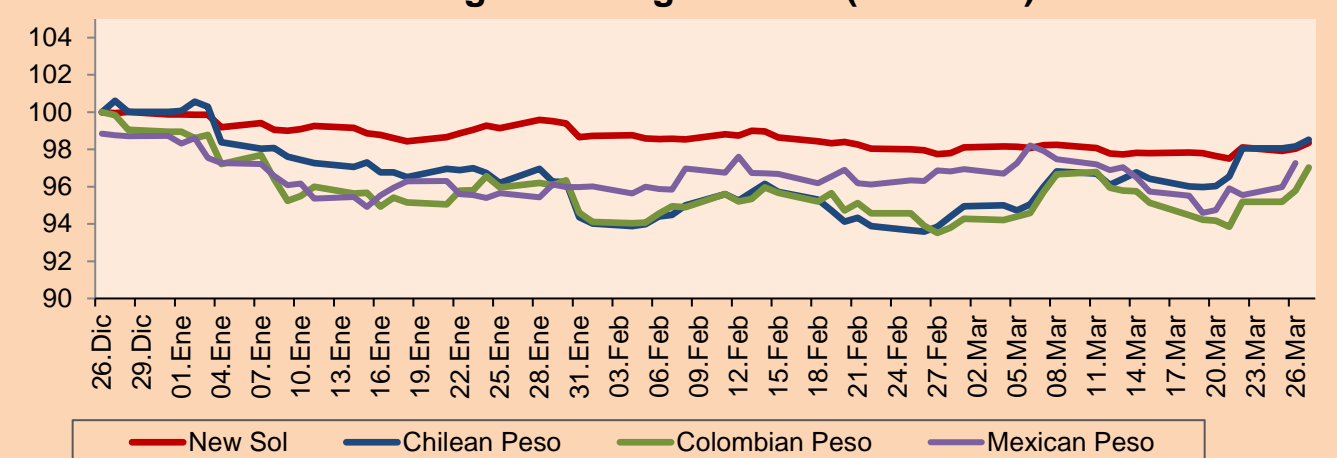


Source: Bloomberg

Currency	Price	1D*	5D*	30 D*	YTD*
▲ New Sol (PEN)	3,3170	0.32%	0.73%	0.36%	-1.54%
▲ Chilean Peso (CLP)	683.25	0.37%	2.59%	5.18%	-1.49%
▲ Colombian Peso (COP)	3,186.45	1.30%	3.03%	2.61%	-1.95%
▲ Mexican Peso (MXN)	19.36	1.34%	2.83%	1.19%	-1.47%

*Legend: Variation 1D: 1 day; 5D: 5 days; 1M: 1 Month; YTD: Var%12/31/18 to date

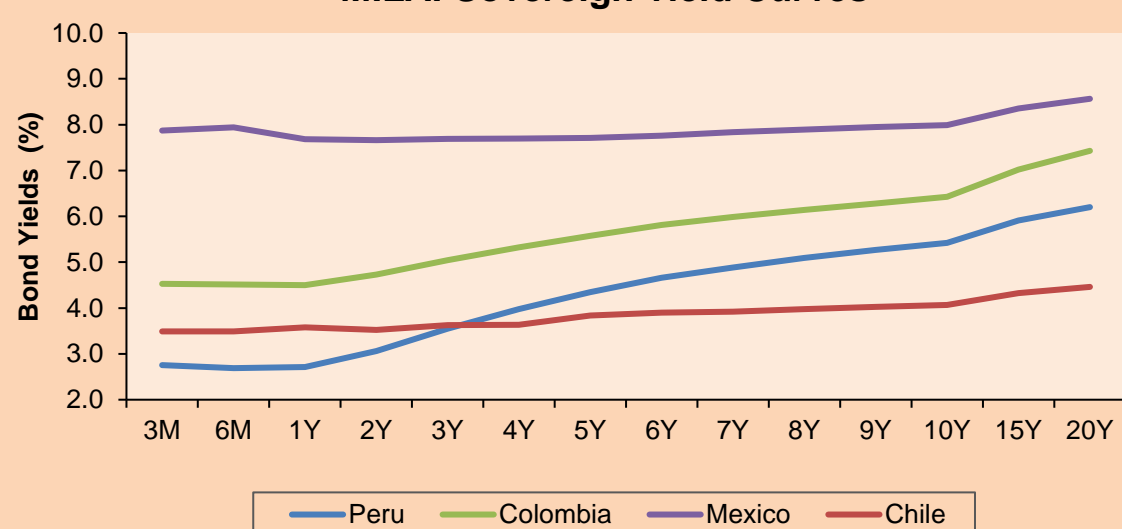
MILA: Foreign Exchange Indices (3 months)



Base: 26/12/18=100
Source: Bloomberg

Instrument	Currency	Price	Bid Yield (%)	Ask Yield (%)	Duration
PERU 4.125 08/25/2027	USD	109.222	2.89	2.87	7.15
PERU 7.125 03/30/19	USD	100.251	-41.13	-119.08	0.01
PERU 7.35 07/21/25	USD	125.767	2.87	2.85	5.18
PERU 8.75 11/21/33	USD	156.144	3.74	3.74	9.47
PERU 6.55 03/14/37	USD	134.74	3.86	3.85	11.29
PERU 5.625 11/18/2050	USD	128.078	4.05	4.04	16.56
CHILE 2.25 10/30/22	USD	99.232	2.50	2.45	3.39
CHILE 3.875 08/05/20	USD	101.757	2.63	2.45	1.31
CHILE 3.625 10/30/2042	USD	99.485	3.67	3.65	15.74
COLOM 11.75 02/25/20	USD	108.053	2.81	2.55	0.88
COLOM 11.85 03/09/28	USD	160.181	3.88	3.80	6.33
COLOM 10.375 01/28/33	USD	153.381	4.99	4.98	8.60
COLOM 7.375 09/18/37	USD	130.596	4.86	4.84	11.19
COLOM 6.125 01/18/41	USD	117.628	4.82	4.80	12.75
MEX 4 10/02/23	USD	103.24	3.26	3.18	4.04
MEX5.55 01/45	USD	110.236	4.861	4.839	14.25

MILA: Sovereign Yield Curves



Source: Bloomberg

Equity

Largest gains	Exchange	Amt.	Price	▲%	Largest losses	Exchange	Amt.	Price	▼%
MINSUR11	Lima	PEN	1.79	4.68	CRETEXC1	Lima	PEN	0.78	-8.24
SOQUICOM	Santia.	CLP	163.68	3.59	SALFACORP	Santia.	CLP	913.61	-3.99
CIC	Santia.	CLP	30.00	3.09	VICONTO	Santia.	CLP	26.90	-3.93
SK	Santia.	CLP	1219.60	2.50	LUISAI1	Lima	PEN	250.00	-3.85

Per Turnover	Exchange	Amount (US\$)	Per Volume	Exchange	Volume
ECOPETROL	Colomb.	14,935,332	BSANTANDER	Santia.	42,515,347
PFBCOLOM	Colomb.	8,638,158	VAPORES	Santia.	37,103,237
SQM-B	Santia.	6,187,432	CHILE	Santia.	25,841,948
SK	Santia.	5,873,200	ECOPETROL	Colomb.	13,990,797
COPEC	Santia.	4,737,019	NORTEGRAN	Santia.	13,019,893

MILA

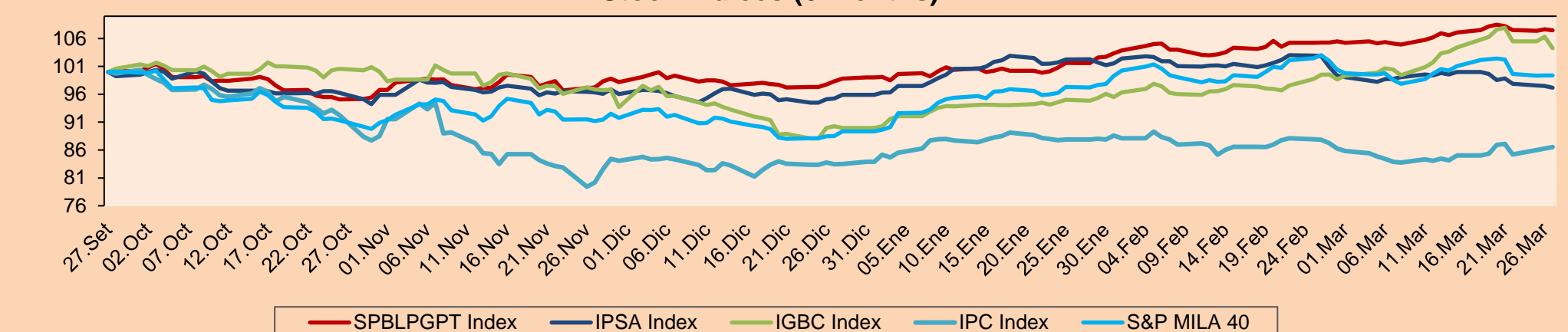
Peru: The General Index of the BVL ended today's session with a positive result of -0.16%. The index maintains an accumulated positive annual trend of + 8.51% in local currency, while the adjusted yield in dollars amounts to + 10.21%. Then, the S & P / BVL Peru SEL advanced by + 0.11% while the S & P / BVL LIMA 25 decreased by -0.26%. The spot PEN reached S / 3.2930. **Highlights:** Telefónica del Perú evaluates the sale of international bonds

Chile: The IPSA index ended the day with a negative yield of -0.32%. The sectors of the index with the most negative results were Products of first necessity (-0.92%) and Industrial (-1.84%). On the other hand, the values with the lowest results were Salfacorp SA (-3.99%) and Lan Airlines SA (-2.00%). **Highlights:** Bag full fourth consecutive fall and five shares clear all that they had won in the year.

Colombia: The COLCAP index closed the session with a negative result of -2.14%. The sectors with higher yields were Products of first necessity (-2.45%) and Energy (-2.82%). In addition, the stocks with the highest yields were Grupo Nutresa SA (-2.95%) and Ecopetrol SA (-2.88%). **Highlights:** Dollar was today at only three pesos to exceed the level of \$ 3200

Mexico: The IPC index closed the session with a positive result of + 0.28%. The sectors with the highest yields were Health (+ 4.61%) and Materials (+ 0.81%). In addition, the best performers were Genomma Lab Internacional SAB de CV (+ 2.97%) and Grupo Televisa SA (+ 4.35%). **Highlights:** Bolsa Mexicana de Valores advances for the third day, taking Genomma Lab as the leader in earnings

MILA: Stock Indices (6 months)

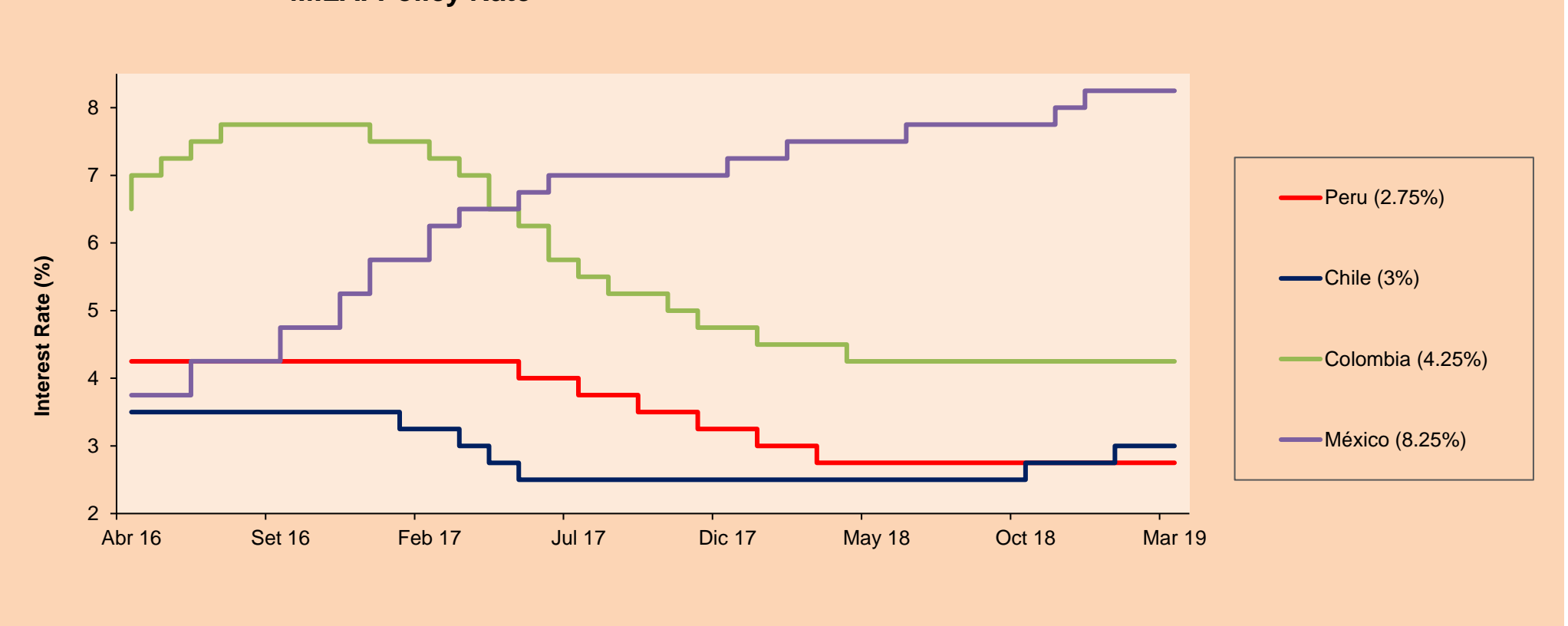


Base: 28/09/18=100
Source: Bloomberg

ETFs

	Curr.	Close	1D	5D	30 D	YTD	Exchange
▼ iShares MSCI All Peru Caped Index Fund	USD	39.13	-0.57%	-1.39%	1.43%	10.23%	NYSE Arca
▼ iShares MSCI Chile Capped	USD	42.49	-0.70%	-4.17%	-10.57%	2.61%	Cboe BZX
▼ Global X MSCI Colombia	USD	13.45	-2.54%	-4.34%	0.98%	20.52%	NYSE Arca
▼ iShares MSCI Mexico Capped	USD	43.49	-1.11%	-3.23%	-2.86%	5.61%	NYSE Arca
▼ iShares MSCI Emerging Markets	USD	42.2	-1.08%	-3.32%	-3.03%	8.04%	NYSE Arca
▼ Vanguard FTSE Emerging Markets	USD	41.64	-1.09%	-3.09%	-1.60%	9.50%	NYSE Arca
▼ iShares Core MSCI Emerging Markets	USD	50.81	-1.11%	-3.33%	-2.79%	7.76%	NYSE Arca
▼ iShares JP Morgan Emerging Markets Bonds	USD	58.5	-0.81%	-2.39%	-2.11%	4.71%	Cboe BZX
▼ Morgan Stanley Emerging Markets Domestic	USD	6.79	-0.73%	-1.59%	0.15%	12.05%	New York

MILA: Policy Rate



Source: Bloomberg

Capital Market Laboratory Coordinador: Economist Bruno Bellido Anicama
 Collaboration: Pablo Llanos, Samuel Machacuy, Jorge Retamozo, Marcia Rojas.
 e-mail: pulsobursatil@ulima.edu.pe
 facebook: www.facebook.com/pulsobursatil.ul
 Phone number : 4376767 Annex: 35340

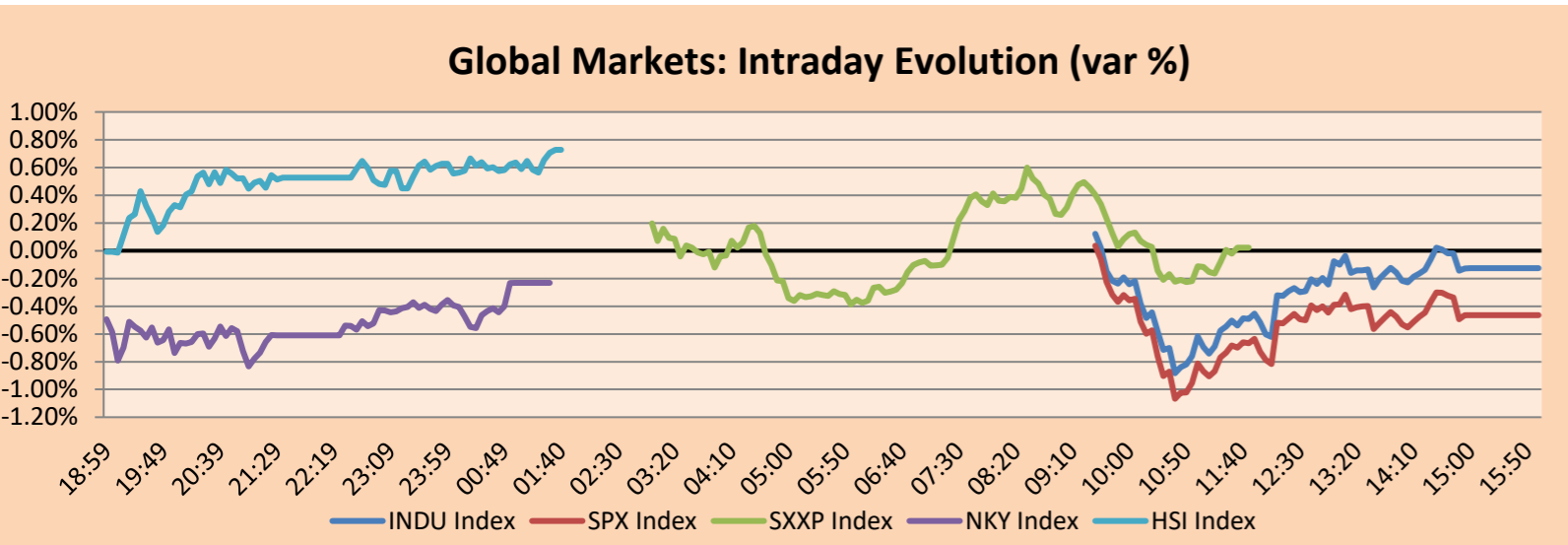


PULSO BURSÁTIL

WORLD

Main Indices	Close	1 D*	5 D*	1 M*	YTD*	Market Cap. (US\$ Mill.)
▼ Dow Jones (USA)	25,625.59	-0.13%	-0.47%	-1.38%	9.85%	7,156,831
▼ Standard & Poor's 500 (USA)	2,805.37	-0.46%	-0.67%	0.47%	11.91%	24,400,682
▼ NASDAQ Composite (USA)	7,643.38	-0.63%	-1.11%	1.18%	15.19%	11,887,203
▲ Stoxx EUROPE 600 (Europe)	377.28	0.02%	-0.93%	1.26%	11.74%	9,040,206
▼ DAX (Germany)	11,419.04	0.00%	-1.59%	-0.59%	8.15%	970,263
▼ FTSE 100 (United Kingdom)	7,194.19	-0.03%	-1.33%	1.22%	6.93%	1,466,813
▼ CAC 40 (France)	5,301.24	-0.12%	-1.51%	1.45%	12.06%	1,431,528
▲ IBEX 35 (Spain)	9,229.90	0.51%	-1.87%	0.20%	8.08%	513,659
▲ MSCI AC Asia Pacific Index	159.77	0.96%	-0.32%	-0.22%	8.90%	18,168,728
▲ HANG SENG (Hong kong)	28,728.25	0.56%	-2.02%	0.33%	11.15%	2,797,431
▲ SHANGHAI SE Comp. (China)	3,022.72	0.85%	-2.20%	2.78%	21.20%	4,903,019
▲ NIKKEI 225 (Japan)	21,378.73	-0.23%	-0.87%	-0.03%	6.81%	3,282,074
▼ BOVESPA (Brazil)	91,903.40	-3.57%	-6.26%	-5.55%	4.57%	708,403
▼ Merval (Argentina)	32,174.68	-1.27%	-7.29%	-8.86%	6.34%	24,804

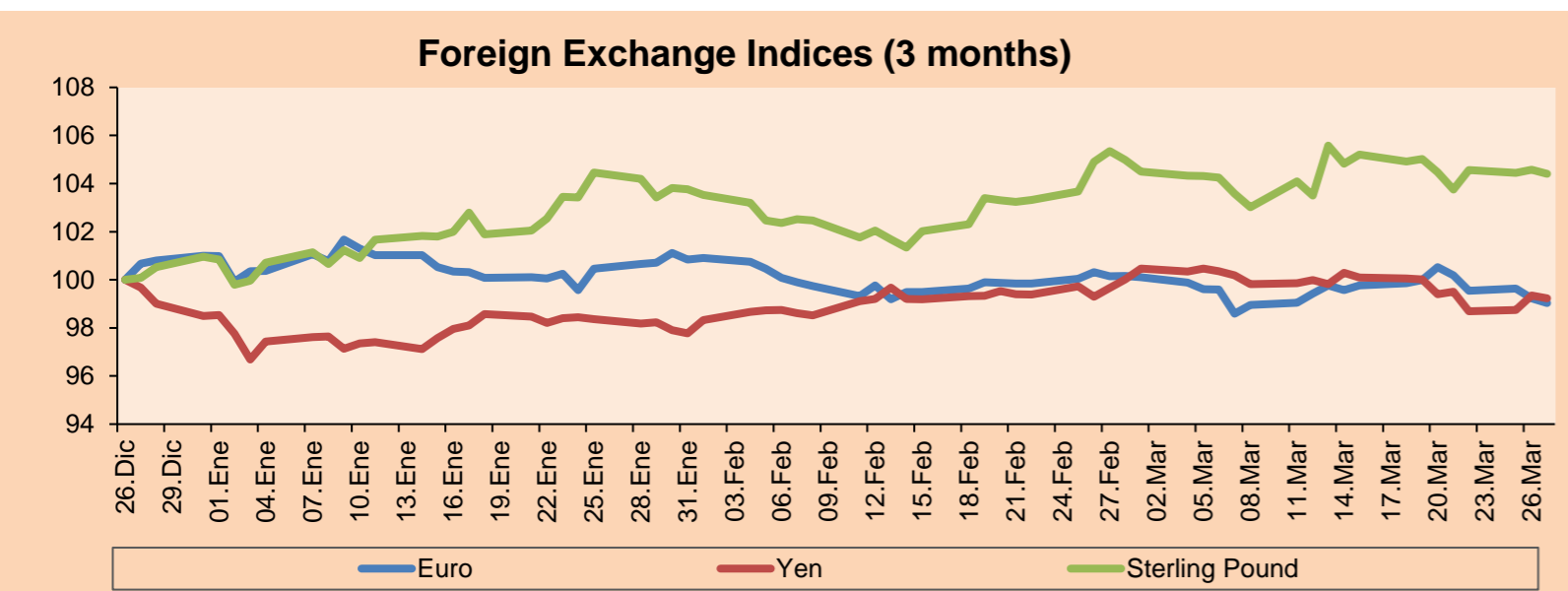
*Legend: Variation 1D: 1 Day; 5D: 5 Days; 1M: 1 Month; YTD: Var.% 12/31/18 to date



Source: Bloomberg

Currency	Price	1 D*	5 D*	1 M*	YTD*
▼ Euro	1.1244	-0.20%	-1.48%	-1.00%	-1.94%
▼ Yen	110.5100	-0.12%	-0.17%	-0.50%	0.75%
▼ Sterling Pound	1.3189	-0.17%	-0.07%	0.70%	3.41%
▲ Yuan	6.7271	0.17%	0.49%	0.57%	-2.20%
▼ Hong Kong Dollar	7.8487	-0.01%	-0.02%	0.00%	0.21%
▲ Brazilian Real	3.9940	3.06%	5.76%	6.57%	3.08%
▲ Argentine Peso	43.8891	2.93%	7.43%	12.44%	16.52%

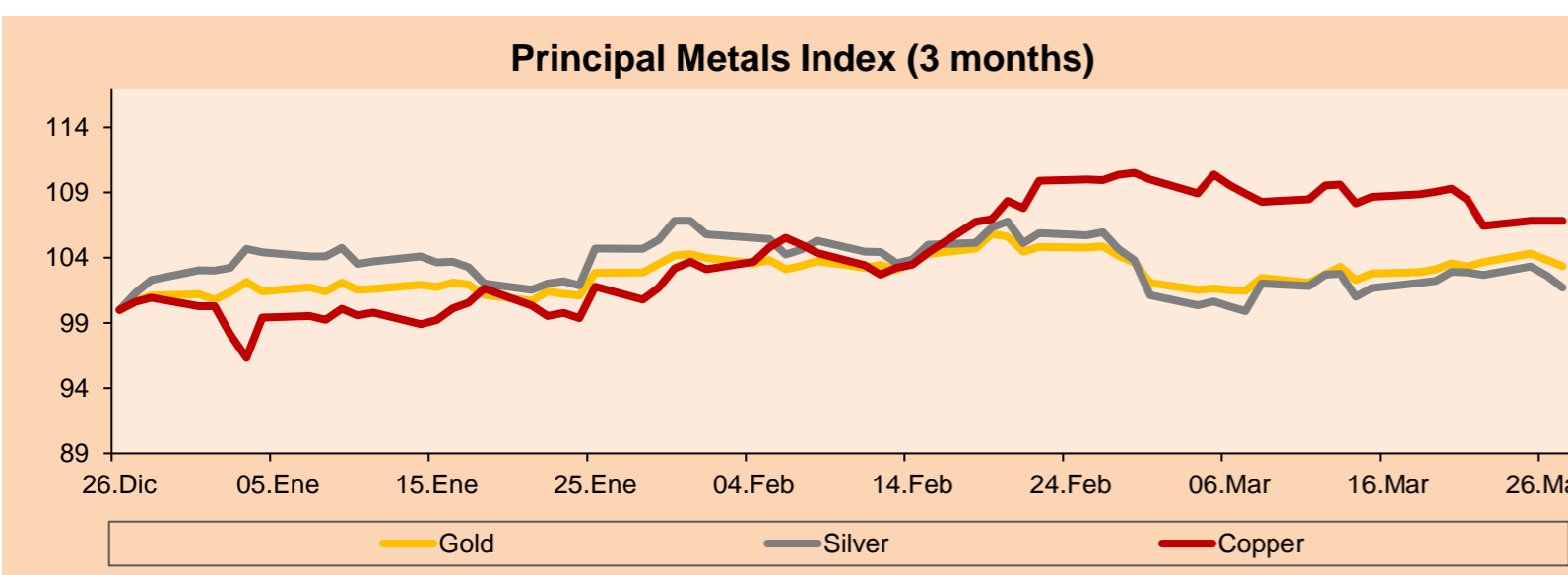
*Legend: Variation 1D: 1 Day; 5D: 5 Days; 1M: 1 Month; YTD: Var.% 12/31/18 to date



Base: 26/12/18=100
Source: Bloomberg

Commodities	Close	1 D*	5 D*	1 M*	YTD*
▼ Oro (US\$ Oz. T) (LME)	1,309.57	-0.47%	-0.23%	-1.36%	2.11%
▼ Plata (US\$ Oz. T) (LME)	15.29	-0.90%	-1.17%	-3.81%	-1.30%
- Cobre (US\$ TM) (LME)	6,337.50	0.00%	-2.25%	-2.87%	6.53%
- Zinc (US\$ TM) (LME)	2,920.00	0.00%	0.81%	6.68%	15.94%
▼ Petróleo WTI (US\$ Barril) (NYM)	59.40	-0.90%	-1.38%	6.22%	27.71%
- Estafío (US\$ TM) (LME)	21,345.00	0.00%	-0.35%	-2.56%	9.35%
- Plomo (US\$ TM) (LME)	1,971.75	0.00%	-2.57%	-4.92%	-1.76%
- Molibdeno (US\$ TM) (LME)	1.00	0.00%	0.00%	-100.00%	-100.00%
▼ Azúcar #11 (US\$ Libra) (NYB-ICE)	12.58	-0.08%	-1.26%	-3.23%	3.97%
▲ Cacao (US\$ TM) (NYB-ICE)	2,248.00	0.49%	4.90%	-0.35%	-8.21%
▼ Café Arábica (US\$ TM) (NYB-ICE)	93.85	-1.57%	-0.95%	-6.01%	-10.58%

*Leyenda: Variación 1D: 1 Día; 5D: 5 Días; 1M: 1 Mes; YTD: Var.% 31/12/17 a la fecha



Base: 26/12/18=100
Source: Bloomberg

Equity

Alemania (Acciones del DAX Index)

Largest gains	Curr.	Price	▲ %	Exchange	Largest losses	Curr.	Price	▼ %	Exchange
1COV GY	EUR	48.07	2.25	Xetra	CON GY	EUR	134.55	-1.46	Xetra
DAI GY	EUR	51.35	1.91	Xetra	BAYN GY	EUR	56.33	-1.30	Xetra
LHA GY	EUR	19.8	1.49	Xetra	FME GY	EUR	69.98	-0.88	Xetra
HEN3 GY	EUR	89.38	0.93	Xetra	VNA GY	EUR	46.54	-0.81	Xetra

Europe (Stocks from STOXX EUROPE 600)

Largest gains	Curr.	Price	▲ %	Exchange	Largest losses	Curr.	Price	▼ %	Exchange
CDR PW	PLN	195.9	5.44	Warsaw	NMC LN	GBP	2192	-7.20	Londres
CBK GY	EUR	7.143	4.97	Xetra	STM IM	EUR	13.21	-6.54	Borsa Italiana
BCP PL	EUR	0.2291	3.81	EN Lisbon	AMS SE	CHF	26.35	-6.23	SIX Swiss Ex
ABN NA	EUR	19.875	3.62	EN Amsterdam	IFX GY	EUR	17.78	-5.20	Xetra

Global Overview:

United States:

The US market closed the day with negative results, where the market shares and their Treasuries have increased this year, but the recession warns that the yield curve just sounds suggests that this blocking relationship may end. In addition, bond demand has soared, boosting yields on 10-year bonds to the lowest in 15 months. At the same time, US stocks are having their best quarter in a decade. To date, the S&P 500 benchmark advanced 12.04%, just a few days before its best quarter since 2009. On the other hand, the acting chief of the Federal Aviation Administration, Dan Elwell, defended the management of his agency from the problematic 737 MAX jet and the FAA's relationship with Boeing Co. (+ 1.03%), despite years of complaints that it has delegated too much of its approval process to the companies it regulates. Finally, WellCare Health Plans Inc. (+ 12.34%), obtained the largest positive variation of the date, after the US health insurer Centene Corp. (-4.98%), announced the purchase of its smaller rival for a amount of \$ 15.3 billion.

Europe:

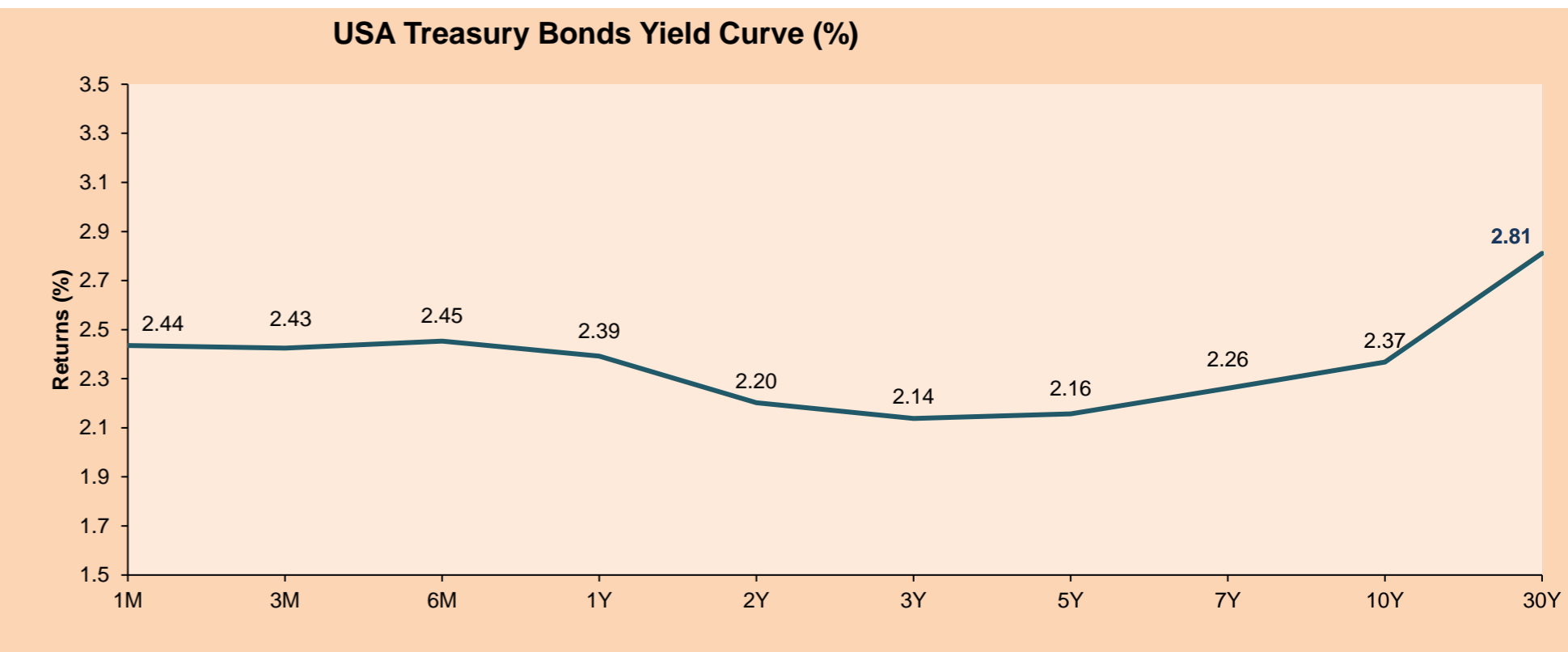
The main European markets ended the day with few variations, the advance of the Financial (+0.62%) and Industrial (+0.22%) sectors was offset by the fall of the Information Technology (-0.14%) and Health (-0.54%). The pan-European index, the Stoxx Europe 600 (+0.02%), which groups shares of companies from 17 countries in the region, finished slightly higher, after oscillating between -0.4% and +0.63% during the session. In this context of uncertainty about the future global growth, reinforced by recent reports on industrial profits in China, the FTSE 100 (-0.03%), CAC (-0.12%) and the DAX (+0.00%), did not present significant changes with respect to the previous close. Bank shares soared, after Reuters said that the European Central Bank (ECB) would partially exempt banks from paying 0.4% per annum for depositing excess overnight liquidity. The eurozone's banking index increased 3.5%, which would represent its best day in little more than a month, while the yields of Italian bonds stopped its rise when the news was announced.

Asia:

The Asian market closed the day with mixed results, with Asia Dow (-0.34%) and Nikkei 225 (-0.23%) with losses. By contrast, China's shares ended up with gains after two consecutive sessions in red, where the Shanghai Composite increased + 0.85% while the blue CSI 300 index rose + 1.2%. It is highlighted that, in Beijing, measures are being reinforced to support the manufacturing industry by reducing the value-added tax, increasing infrastructure spending and reducing direct government intervention. In other news, the complex network of oil pipelines, tanks and US export terminals - which helped the country become the world's leading oil producer - is being a problem for oil buyers, specifically two refineries (SK Innovation Co. and Hyundai Oilbank Co.) of South Korea, the main buyer of maritime supplies in the USA, which have rejected shipments in recent months due to quality problems and contamination that makes processing difficult. In corporate news, China's industrial companies recorded their worst fall in profits in the first two months of this year, something that was not seen since the end of 2011 after the growing tensions in the economy against the slowdown in national demand and abroad.

ETFs

	Curr.	Close	1D	5D	30 D	YTD	Exchange
SPDR S&P 500 ETF TRUST	USD	279.65	-0.52%	-0.67%	0.49%	12.39%	NYSE Arca
ISHARES MSCI EMERGING MARKET	USD	42.20	-1.08%	-3.32%	-3.03%	8.04%	NYSE Arca
ISHARES IBOXX HIGH YLD CORP	USD	86.08	0.07%	-0.10%	0.94%	7.10%	NYSE Arca
FINANCIAL SELECT SECTOR SPDR	USD	25.42	-0.43%	-2.75%	-3.84%	7.26%	NYSE Arca
VANECK VECTORS GOLD MINERS E	USD	23.01	-1.46%	1.68%	1.05%	9.10%	NYSE Arca
ISHARES RUSSELL 2000 ETF	USD	151.27	-0.39%	-1.30%	-4.12%	13.27%	NYSE Arca
SPDR GOLD SHARES	USD	123.65	-0.52%	-0.43%	-1.37%	1.98%	NYSE Arca
ISHARES 20+ YEAR TREASURY BO	USD	126.12	0.92%	2.80%	4.27%	4.25%	NASDAQ GM
INVESCO QQQ TRUST SERIES 1	USD	177.90	-0.64%	-1.03%	2.71%	15.53%	NASDAQ GM
ISHARES NASDAQ BIOTECHNOLOGY	USD	108.80	-1.39%	-3.87%	-3.68%	12.83%	NASDAQ GM
ENERGY SELECT SECTOR SPDR	USD	65.97	-0.71%	-1.27%	0.94%	15.93%	NYSE Arca
PROSHARES ULTRA VIX ST FUTUR	USD	42.18	2.13%	8.26%	-2.45%	-48.39%	NYSE Arca
UNITED STATES OIL FUND LP	USD	12.34	-1.04%	-1.28%	6.66%	27.74%	NYSE Arca
ISHARES MSCI BRAZIL SPDR	USD	39.28	-5.62%	-10.75%	-10.56%	2.83%	NYSE Arca
SPDR S&P OIL & GAS EXP & PR	USD	30.62	-0.26%	-1.32%	0.37%	15.70%	NYSE Arca
UTILITIES SELECT SECTOR SPDR	USD	58.55	-0.70%	1.90%	4.07%	11.46%	NYSE Arca
ISHARES US REAL ESTATE ETF	USD	86.36	-0.21%	1.65%	3.09%	16.06%	NYSE Arca
SPDR S&P BIOTECH ETF	USD	87.76	-2.18%	-2.85%	-1.98%	22.31%	NYSE Arca
ISHARES IBOXX INVESTMENT GRA	USD	119.00	0.13%	1.18%	2.60%	6.13%	NYSE Arca
ISHARES JP MORGAN USD EMERGI	USD	109.73	-0.37%	-0.42%	1.46%	6.46%	NASDAQ GM
REAL ESTATE SELECT SECT SPDR	USD	35.93	-0.33%	1.67%	3.87%	16.57%	NYSE Arca
ISHARES CHINA LARGE-CAP ETF	USD	43.49	-0.18%	-3.14%	-3.40%	11.28%	NYSE Arca
CONSUMER STAPLES SPDR	USD	55.47	-0.34%	1.76%	3.04%	9.83%	NYSE Arca
VANECK VECTORS JUNIOR GOLD M	USD	32.88	-1.76%	-0.63%	-1.05%	8.80%	NYSE Arca
SPDR BBG BARC HIGH YIELD BND	USD	35.80	0.06%	-0.08%	1.00%	7.60%	NYSE Arca
VANGUARD REAL ESTATE ETF	USD	86.77	-0.29%	1.69%	2.75%	16.36%	NYSE Arca



Source: Bloomberg

.Capital Market Laboratory Coodinator: Economist Bruno Bellido Anicama
.Collaboration: Pablo Llanos, Samuel Machucauy, Jorge Retamozo, Marcia Rojas
e-mail: pulsobursatil@ulima.edu.pe
facebook: www.facebook.com/pulsobursatil.ul
Phone number: 4376767 Annex: 35340

PULSO BURSÁTIL

LIMA

Stocks

Ticker	Currency	Price	1D*	5D*	30D*	YTD*	Frequency	Volume (US\$)	Beta	Dividend Yield (%)	Price Earning	Market Cap. (M US\$)	Economic Sector*	Index Weight
▼ ALICORC1 PE**	S/.	10.90	-0.91%	-2.68%	-3.54%	9.55%	100.00%	1,128,406	0.66	2.20	20.49	2,803.09	Industrial	3.53%
▼ ATACOCB1 PE**	S/.	0.31	-0.96%	-3.43%	-0.64%	-3.73%	100.00%	17,597	0.54	0.00	8.49	88.30	Mining	1.02%
▲ BACKUS1 PE**	S/.	22.25	1.14%	0.00%	10.42%	8.27%	80.00%	23,720	0.46	5.27	8.51	8,430.26	Industrial	0.82%
▼ BAP PE**	US\$	239.30	-0.40%	-3.57%	-0.95%	8.13%	100.00%	2,472,276	1.09	1.80	-	19,086.92	Diverse	5.82%
▼ BVN PE**	US\$	17.34	-1.64%	-0.23%	4.77%	7.70%	100.00%	128,938	1.00	0.50	-	4,770.38	Mining	5.88%
▲ CASAGRC1 PE**	S/.	3.96	0.25%	-1.00%	1.02%	-2.46%	100.00%	11,222	0.74	0.48	141.43	100.56	Agricultural	1.31%
▼ CONTINC1 PE**	S/.	3.99	-0.25%	0.25%	7.26%	1.01%	100.00%	53,452	0.70	3.56	14.89	6,457.86	Finance	2.85%
▼ CORARE1 PE**	S/.	0.80	-1.23%	1.27%	3.90%	14.29%	100.00%	61,967	1.08	6.56	4.08	346.61	Industrial	1.72%
▼ CPACASC1 PE**	S/.	6.53	-0.15%	-0.15%	1.24%	1.24%	95.00%	542,205	0.65	5.77	36.28	840.39	Industrial	2.38%
▼ CVERDEC1 PE**	US\$	23.50	-0.21%	-4.08%	-1.26%	12.98%	100.00%	24,676	0.86	2.43	12.89	8,226.32	Mining	5.25%
▼ ENGEPEC1 PE**	S/.	2.22	-0.45%	4.23%	5.71%	14.43%	80.00%	18,302	0.66	7.85	9.62	1,899.92	Public Services	1.44%
- ENDISPC1**	S/.	5.50	0.00%	0.00%	5.77%	3.19%	75.00%	132,876	0.77	0.00	10.22	1,058.82	Public Services	0.98%
▲ FERREYC1 PE**	S/.	2.49	0.81%	0.00%	-2.35%	-1.97%	100.00%	542,377	0.88	5.44	10.82	732.42	Diverse	4.90%
▼ GRAMONC1 PE**	S/.	2.04	-2.39%	-4.23%	9.09%	2.51%	90.00%	41,646	0.51	0.00	19.41	405.94	Diverse	4.05%
- IFS PE**	US\$	46.00	0.00%	-2.54%	0.55%	9.52%	95.00%	45,080	0.60	3.04	15.41	5,203.10	Diverse	7.22%
▼ INRETC1 PE**	US\$	35.51	-0.67%	-0.92%	2.93%	25.48%	100.00%	1,621,399	1.00	0.00	58.30	3,650.69	Diverse	5.28%
▼ LUSURC1 PE**	S/.	11.95	-0.50%	-2.45%	7.66%	9.13%	95.00%	216,656	0.52	6.19	10.79	1,754.32	Public Services	1.81%
▲ MINSUR1 PE**	S/.	1.79	4.68%	1.70%	6.93%	35.61%	85.00%	177,239	1.39	4.23	1.01	1,555.79	Mining	3.09%
- PML PE**	US\$	0.16	0.00%	2.50%	7.19%	-6.29%	70.00%	30,226	1.54	0.00	-	43.27	Mining	2.12%
- RELAPAC1 PE**	S/.	0.16	0.00%	-1.80%	10.81%	30.16%	100.00%	23,190	0.43	0.00	-	174.77	Industrial	2.12%
▼ SCCO PE**	US\$	38.60	-0.72%	0.26%	4.89%	29.44%	95.00%	146,683		5.04	19.30	29,839.52	Mining	2.14%
- SIDERC1 PE**	S/.	0.81	0.00%	14.08%	19.12%	47.27%	100.00%	108,990	1.39	0.00	7.55	299.85	Industrial	1.43%
▼ TV PE**	US\$	0.28	-3.15%	-2.46%	-4.48%	-6.73%	95.00%	4,345	1.79	0.00	-	226.72	Mining	2.93%
▼ UNACEMC1 PE**	S/.	2.73	-0.36%	1.87%	2.63%	5.53%	95.00%	233,568	0.79	1.90	23.61	1,355.13	Industrial	3.00%
- VOLCABC1 PE**	S/.	0.63	0.00%	-3.08%	-4.55%	-11.27%	100.00%	68,764	1.27	2.17	24.63	774.27	Mining	5.90%

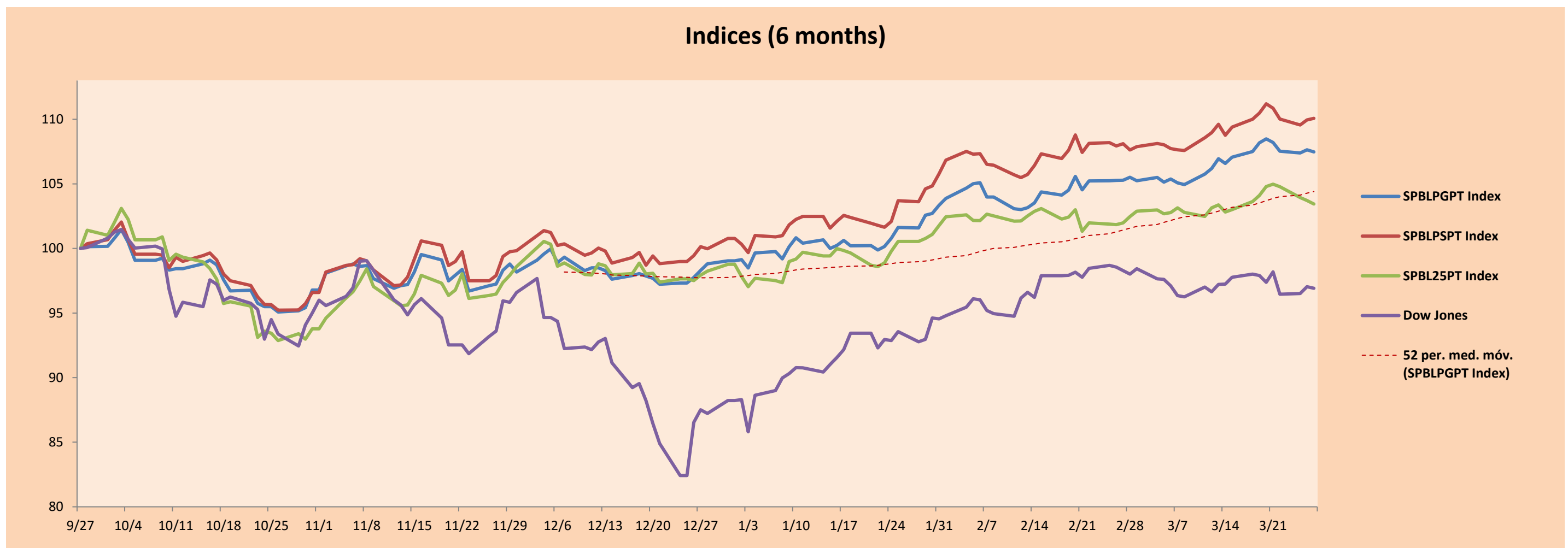
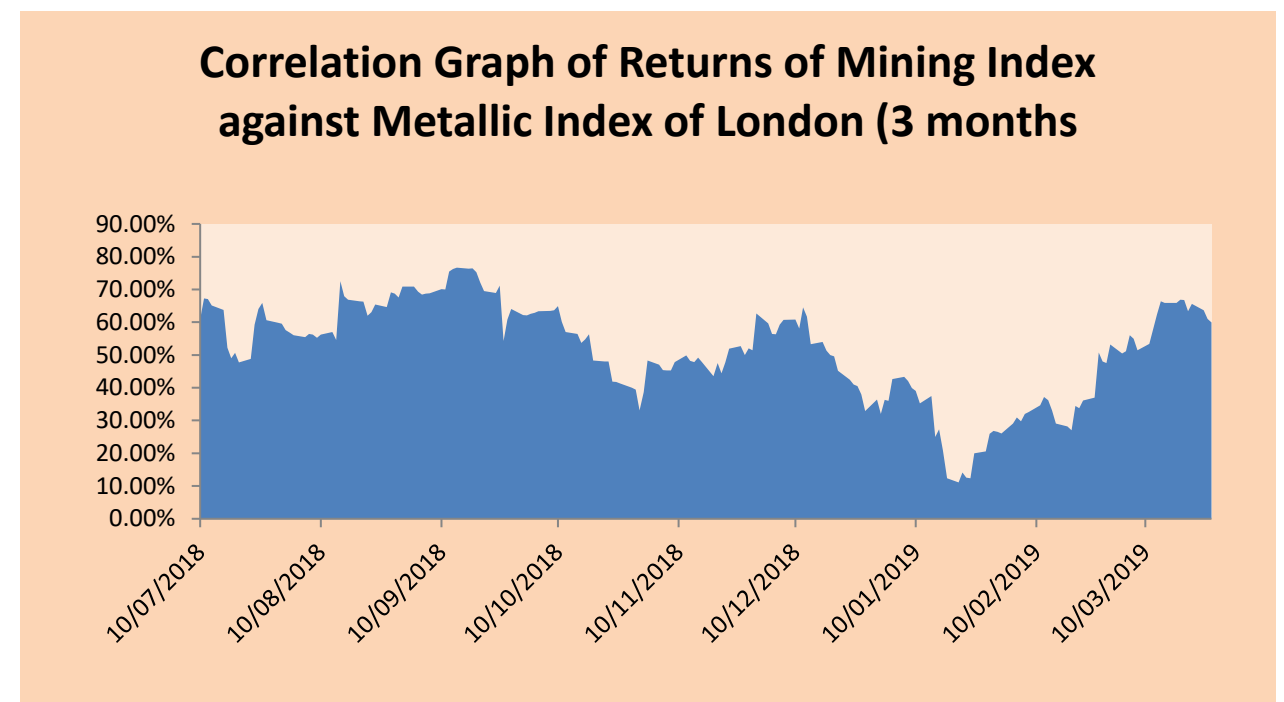
Quantity of shares: 25
 Source: Bloomberg, Economática
 * Bloomberg Industry Classification System
 ** PER is used in the stock market and original currency of the instrument
 *Legend: Variation 1D: 1 Day; 5D: 5 Days, 1M: 1 Month; YTD: Var.% 12/31/18 to date

Up 4
 Down 15
 Hold 6

Sectorial Indices

	Close	1D*	5D*	30D*	YTD*	Beta
▼ Mining Index	318.26	-0.48%	0.02%	3.96%	11.74%	1.60
▼ Consumer Index	1,147.02	-0.29%	-1.32%	0.94%	14.06%	0.38
▼ Industrial Index	232.67	-0.21%	-0.09%	1.93%	2.54%	0.73
▲ Banking and Financial Index	1,273.56	0.21%	-2.51%	-0.10%	6.13%	1.22
▼ Construction Index	257.62	-0.77%	-0.10%	4.20%	4.77%	0.70
▼ Services Index	434.66	-0.18%	0.36%	8.17%	9.32%	0.14
▲ Juniors Index	26.57	0.61%	-0.15%	1.07%	-9.75%	0.87
▼ Electric Index	424.34	-0.18%	0.36%	8.18%	9.32%	0.15

*Legend: Variation 1D: 1 Day; 5D: 5 Days, 1M: 1 Month; YTD: Var.% 12/31/18 to date



Source: Bloomberg

Capital Market Laboratory Coordinator: Economist Bruno Bellido Anicama
 Collaboration: Pablo Llanos, Samuel Machacay, Jorge Retamozo, Marcia Rojas.
 e-mail: pulsobursatil@ulima.edu.pe
 facebook: www.facebook.com/pulsobursatil.ul
 Phone number : 4376767 Annex: 35340

PULSO BURSÁTIL

SOVEREIGN RATING

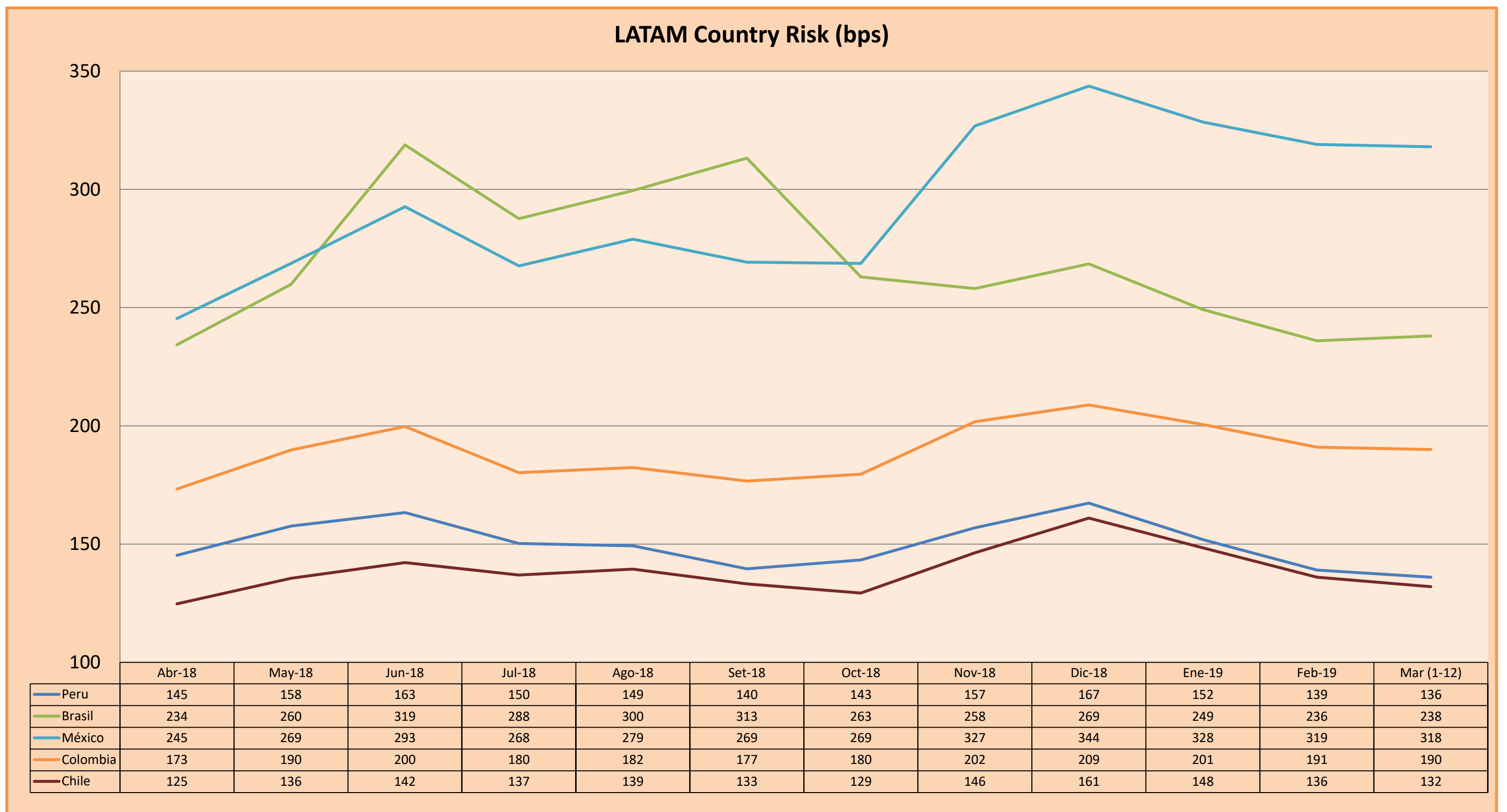
RISK RATINGS

Moody's	S&P	Fitch	
Aaa	AAA	AAA	Prime
Aa1	AA+	AA+	High credit quality
Aa2	AA	AA	
Aa3	AA-	AA-	
A1	A+	A+	Medium-high grade, with low credit risk
A2	A	A	
A3	A-	A-	
Baa1	BBB+	BBB+	Moderate Credit Risk
Baa2	BBB	BBB	
Baa3	BBB-	BBB-	
Ba1	BB+	BB+	It has speculative elements and it is subject to substantial credit risk
Ba2	BB	BB	
Ba3	BB-	BB-	
B1	B+	B+	It is considered speculative and it has high credit risk
B2	B	B	
B3	B-	B-	
Caa1	CCC+	CCC	Bad credit conditions and it is subject to high credit risk
Caa2	CCC		
Caa3	CCC-		
Ca	CC	DDD	Very close to default or in default
	C		
C	D	DD	
		D	

Source: Bloomberg

Latin America Credit Rating			
Clasificadora de riesgo			
Country	Moody's	Fitch	S&P
Peru	A3	BBB+	BBB+
Mexico	A3	BBB+	BBB+
Venezuela	C	C	SD
Brazil	Ba2	BB-	BB-
Colombia	Baa2	BBB	BBB-
Chile	A1	A	A+
Argentine	B2	B	B
Panama	Baa1	BBB	BBB

Source: Bloomberg



Source: BCRP

Capital Market Laboratory Coordinator: Economist Bruno Bellido Anicama
 Support: Pablo Llanos, Samuel Machacuay, Jorge Retamozo, Marcia Rojas.
 e-mail: pulsobursatil@ulima.edu.pe
 facebook: www.facebook.com/pulsobursatil.ul
 Phone number : 4376767 Annex: 35340