

PULSO BURSÁTIL

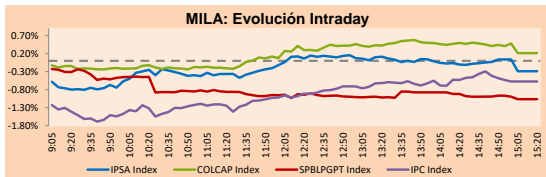
Lima, May 9, 2019

MILA

Main Indices	Close	1 D	5 D	1 M	YTD	Market Cap. (US\$ bill)
▼ IPSA (Chile)	5,045.54	-0.30%	-1.87%	-4.40%	-1.17%	156.43
▼ IGPA (Chile)	25,707.25	-0.24%	-1.61%	-4.04%	-0.93%	201.62
▲ IGBC (Colombia)	12,576.16	0.37%	-0.66%	-5.37%	12.85%	99.79
▲ COLCAP (Colombia)	1,542.57	0.21%	-1.25%	-5.08%	16.34%	101.60
▲ S&P/BVL (Perú)*	20,213.30	-1.06%	-2.66%	-5.01%	4.46%	108.09
▼ S&P/BVL SEL (Perú)	543.02	-0.88%	-1.70%	-4.17%	5.99%	80.31
▼ S&P/BVL LIMA 25	26,736.00	-0.99%	-1.29%	-5.78%	0.86%	88.68
▼ IPC (México)	43,193.36	-0.50%	-2.53%	-3.82%	3.73%	277.76
▼ S&P MILA 40	636.05	-0.22%	-2.86%	-9.13%	4.51%	271.12

* Market Cap. Of the last price

*Legend: Variation 1D: 1 day; 5D: 5 days; 1M: 1 Month; YTD: Var%12/31/18 to date

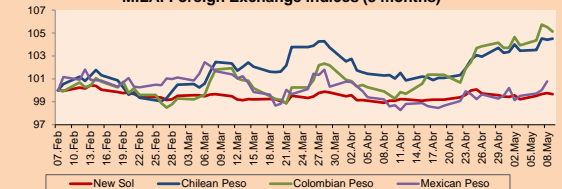


Source: Bloomberg

Currency	Price	1D*	5D*	30 D*	YTD*
▼ New Sol (PEN)	3,313.8	-0.07%	0.11%	0.58%	-1.64%
▲ Chilean Peso (CLP)	684.77	0.09%	0.48%	3.13%	-1.27%
▲ Colombian Peso (COP)	3,278.00	-0.37%	0.46%	5.57%	0.87%
▲ Mexican Peso (MXN)	19.23	0.77%	0.58%	1.59%	-2.12%

*Legend: Variation 1D: 1 day; 5D: 5 days; 1M: 1 Month; YTD: Var%12/31/18 to date

MILA: Foreign Exchange Indices (3 months)



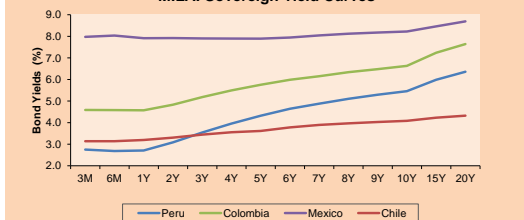
Base: 07/02/19=100

Source: Bloomberg

Fixed Income

Instrument	Currency	Price	Bid Yield (%)	Ask Yield (%)	Duration
PERU 4.125 08/25/2027	USD	107.975	3.05	3.01	7.02
PERU 7.35 07/21/25	USD	124.699	2.98	2.93	5.06
PERU 8.75 11/21/33	USD	155.201	3.80	3.76	9.35
PERU 6.55 03/14/37	USD	133.39	3.91	3.87	11.16
PERU 5.625 11/18/2050	USD	127.953	4.06	4.04	16.47
CHILE 2.25 10/30/22	USD	99.11	2.58	2.46	3.32
CHILE 3.875 08/05/20	USD	101.927	2.39	2.15	1.20
CHILE 3.625 10/30/2042	USD	99.097	3.70	3.67	15.88
COLOM 11.75 02/25/20	USD	107.095	2.69	2.38	0.76
COLOM 11.85 03/09/28	USD	158.361	3.99	3.91	6.20
COLOM 10.375 01/28/33	USD	154.913	4.90	4.79	8.48
COLOM 7.375 09/18/37	USD	129.698	4.92	4.89	11.06
COLOM 6.125 01/18/41	USD	116.873	4.87	4.84	12.61
MEX 4 10/02/23	USD	102.867	3.33	3.25	4.00
MEX5.55 01/45	USD	109.509	4.908	4.882	14.11

MILA: Sovereign Yield Curves



Source: Bloomberg

Equity

Largest gains	Exchange	Amt.	Price	▲%
CMPC	Santia.	CLP	2160.10	4.33
ESPANOLA	Santia.	CLP	2400.00	4.12
EXITO	Colomb.	COP	14300.00	3.03
ECOPETROL	Colomb.	COP	3040.00	2.36

Per Turnover

	Exchange	Amount (US\$)
SOM-B	Santia.	24,462,696
BSANTANDER	Santia.	23,823,021
CHILE	Santia.	19,165,019
CMPC	Santia.	13,100,794
BCI	Santia.	13,076,264

Largest losses	Exchange	Amt.	Price	▼%
SIEMEL	Santia.	CLP	200.00	-48.58
SIPSA	Santia.	CLP	101.01	-10.61
PFCORFICOL	Colomb.	COP	20120.00	-8.55
GRAMONC1	Lima	PEN	2.10	-7.89

Per Volume

	Exchange	Volume
BSANTANDER	Santia.	337,277,796
CHILE	Santia.	133,091,421
VAPORES	Santia.	32,195,286
ORO BLANCO	Santia.	16,296,793

MILA

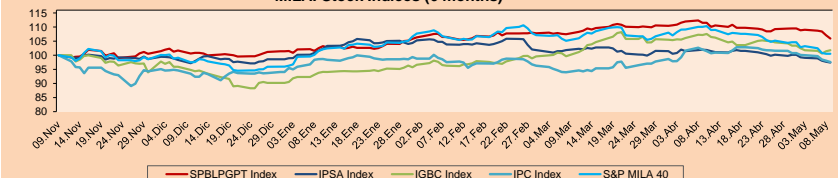
Peru: The General Index of the BVL ended today's session with a negative result of -1.06%. The index maintains a cumulative positive annual trend of +4.46% in local currency, while the yield adjusted in dollars amounts to + 6.20%. Then, the S & P / BVL Peru SEL fell by -0.88% while the S & P / BVL LIMA 25 fell -0.99%. The spot PEN reached 5 / 3.3138. Headline: Peru's trade surplus drops 36.6 pct in first quarter.

Chile: The IPSA index ended today's session with a negative return of -0.30%. The sectors of the index with the most negative results were communication services (-1.76%) and information technology (-1.87%). On the other hand, the values with the lowest results were Colbun SA (-2.19%) and Lan Airlines SA (-1.93%). Headline: Enel América SA will go ex-dividend tomorrow.

Colombia: The COLCAP index closed today's session with a positive return of + 0.21%. The sectors of the index that generated the most positive results were Energy (+ 2.32%) Products of First Need (+ 1.28pc%). Finally, the stocks with the best yields were Almacenes Éxito (+ 3.03%) and Ecopetrol SA (+ 2.36%). Headline: In the first quarter Bancolombia's profit increased almost 60%.

Mexico: The IPC index closed today's session with a negative yield of -0.58%. The sectors of the index that generated the most negative results were Public Services- 2.91% and Finance (-2.19%). Finally, the stocks with the worst yields were Bolsa Mexicana de Valores (-5.29%) and Grupo Financiero Inbursa SA (-3.75%). Headline: Fitch ratifies Grupo Bimbo's rating on "AA + (mex)"

MILA: Stock Indices (6 months)



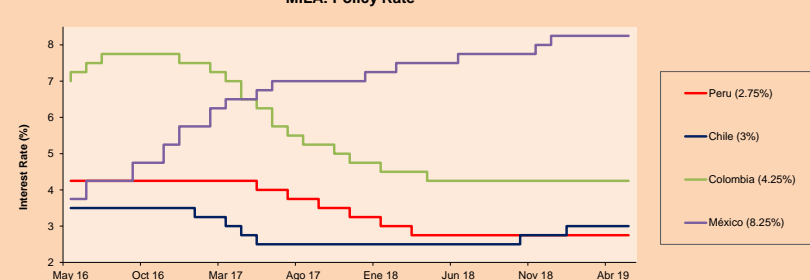
Base: 12/11/18=100

Source: Bloomberg

ETFs

	Curr.	Close	1D	5D	30 D	YTD	Exchange
▼ iShares MSCI All Peru Caped Index Fund	USD	37.09	-0.51%	-1.33%	-6.76%	4.48%	NYSE Arca
▼ iShares MSCI Chile Capped	USD	41.15	-0.12%	-2.49%	-7.74%	-0.63%	Cboe BZX
▲ Global X MSCI Colombia	USD	12.915	0.87%	-1.49%	-8.14%	15.73%	NYSE Arca
▼ iShares MSCI Mexico Capped	USD	44.14	-0.65%	-2.88%	-5.22%	7.19%	NYSE Arca
▼ iShares MSCI Emerging Markets	USD	41.73	-1.58%	-4.51%	-5.82%	6.84%	NYSE Arca
▼ Vanguard FTSE Emerging Markets	USD	41.35	-1.41%	-4.35%	-5.51%	8.74%	NYSE Arca
▼ iShares Core MSCI Emerging Markets	USD	50.26	-1.64%	-4.45%	-5.70%	6.60%	NYSE Arca
▼ iShares JP Morgan Emerging Markets Bonds	USD	57.6	-1.03%	-3.40%	-3.60%	3.10%	Cboe BZX
▼ Morgan Stanley Emerging Markets Domestic	USD	6.45	-1.75%	-2.12%	-2.42%	8.84%	New York

MILA: Policy Rate



Source: Bloomberg

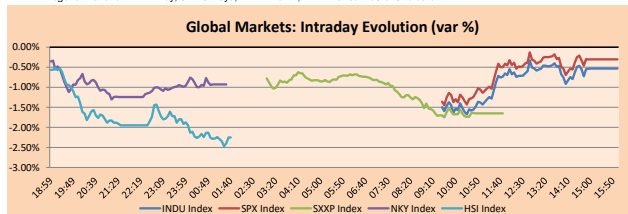
Capital Market Laboratory Coordinator: Economist Bruno Bellido Anicama
 Collaboration: Juan Carlos Figueroa, Pablo Llanos, Jorge Retamozo and Marcia Rojas.
 e-mail: pulsobursatil@ulima.edu.pe
 facebook: www.facebook.com/pulsobursatil.ul
 Phone number : 4376767 Annex: 35340

PULSO BURSÁTIL

WORLD

Main Indices	Close	1 D*	5 D*	1 M*	YTD*	Market Cap. (US\$ Mil.)
▼ Dow Jones (USA)	25,828.36	-0.54%	-1.82%	-1.26%	10.72%	7,192,335
▼ Standard & Poor's 500 (USA)	2,870.72	-0.30%	-1.60%	-0.61%	14.52%	24,852,216
▼ NASDAQ Composite (USA)	7,910.59	-0.41%	-1.57%	-0.67%	19.22%	12,278,528
▼ Stoxx EUROPE 600 (Europe)	375.92	-1.65%	-3.32%	-2.78%	11.33%	9,021,780
▼ DAX (Germany)	11,973.92	-1.89%	-3.01%	0.57%	13.40%	1,004,815
▼ FTSE 100 (United Kingdom)	7,207.41	-0.07%	-2.41%	-2.89%	7.12%	1,488,991
▼ CAC 40 (France)	5,313.16	-1.93%	-4.07%	-2.51%	12.31%	1,449,586
▼ IBEX 35 (Spain)	9,095.20	-1.43%	-3.43%	-3.31%	6.50%	506,779
▼ MSCI AC Asia Pacific Index	156.67	-1.36%	-3.84%	-4.14%	6.79%	17,978,024
▼ HANG SENG (Hong Kong)	28,311.07	-2.39%	-5.45%	-6.00%	9.54%	2,720,807
▼ SHANGHAI SE Comp. (China)	2,850.95	-1.48%	-6.91%	-12.06%	14.32%	4,568,156
▼ NIKKEI 225 (Japan)	21,402.13	-0.93%	-3.59%	-1.32%	6.93%	3,248,081
▼ BOVESPA (Brazil)	94,807.85	-0.83%	-0.75%	-1.19%	7.87%	727,551
▲ Merval (Argentina)	34,119.10	1.02%	10.72%	6.11%	12.63%	24,898

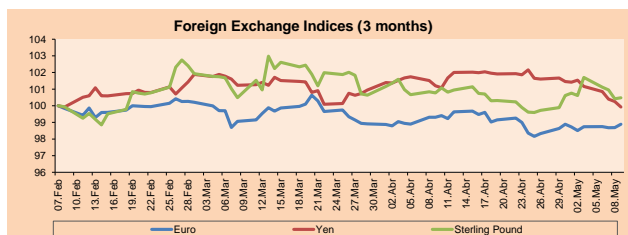
*Legend: Variation 1D: 1 Day; 5D: 5 Days; 1M: 1 Month; YTD: Var. % 12/31/18 to date



Source: Bloomberg

Currency	Price	1 D*	5 D*	1 M*	YTD*
▲ Euro	1.1215	0.21%	0.38%	-0.43%	-2.20%
▼ Yen	109.7400	-0.33%	-1.59%	-1.26%	0.05%
▲ Sterling Pound	1.3014	0.06%	-0.14%	-0.29%	2.04%
▲ Yuan	6.8274	0.66%	1.37%	1.72%	-0.74%
▼ Hong Kong Dollar	7.8484	-0.01%	0.06%	0.09%	0.21%
▼ Brazilian Real	3.9472	0.47%	-0.47%	2.51%	1.88%
▲ Argentine Peso	45.2500	0.39%	1.06%	4.29%	20.13%

*Legend: Variation 1D: 1 Day; 5D: 5 Days; 1M: 1 Month; YTD: Var. % 12/31/18 to date

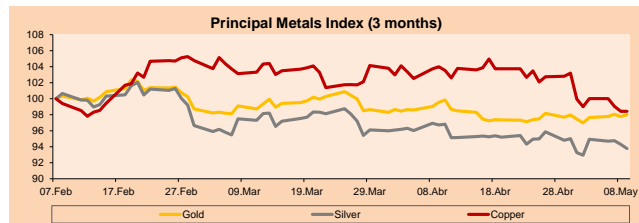


Base: 07/02/19=100

Source: Bloomberg

Commodities	Close	1 D*	5 D*	1 M*	YTD*
▲ Oro (US\$ Oz. T) (LME)	1,284.03	0.25%	1.05%	-1.54%	0.12%
▼ Plata (US\$ Oz. T) (LME)	14.78	-0.56%	0.89%	-3.06%	-4.78%
▼ Cobre (US\$ TM) (LME)	6,129.75	0.00%	-0.59%	-5.35%	3.04%
▼ Zinc (US\$ TM) (LME)	2,751.50	0.00%	-2.29%	-5.80%	9.25%
▼ Petróleo WTI (US\$ Barril) (NYM)	61.70	-0.68%	-0.18%	-3.53%	31.47%
▼ Etano (US\$ TM) (LME)	19,600.00	0.00%	1.23%	-6.52%	0.41%
▼ Plomo (US\$ TM) (LME)	1,873.75	0.00%	0.63%	-4.21%	-6.64%
▼ Molibdeno (US\$ TM) (LME)	1.00	0.00%	0.00%	0.00%	-100.00%
▲ Azúcar #11 (US\$ Libra) (NYB-ICE)	11.78	1.12%	-3.68%	-8.68%	-3.76%
▲ Cacao (US\$ TM) (NYB-ICE)	2,336.00	1.34%	-1.60%	-3.39%	-5.04%
▲ Café Arábica (US\$ TM) (NYB-ICE)	90.85	2.60%	-0.76%	-5.46%	-15.72%

*Lenda: Variación 1D: 1 Día; 5D: 5 Días; 1M: 1 Mes; YTD: Var. % 31/12/17 a la fecha



Base: 07/02/19=100

Source: Bloomberg

Equity

Alemania (Acciones del DAX Index)

Largest gains	Curr.	Price	▲ %	Exchange	Largest losses	Curr.	Price	▼ %	Exchange
HEI GY	EUR	69.72	0.46	Xetra	IFX GY	EUR	18.538	-4.60	Xetra
FRE GY	EUR	50.52	0.44	Xetra	BAYN GY	EUR	57.07	-4.33	Xetra
EOAN GY	EUR	9.415	0.24	Xetra	WDI GY	EUR	135.25	-3.39	Xetra
HEN3 GY	EUR	87.26	0.21	Xetra	LHA GY	EUR	18.85	-3.16	Xetra

Europe (Stocks from STOXX EUROPE 600)

Largest gains	Curr.	Price	▲ %	Exchange	Largest losses	Curr.	Price	▼ %	Exchange
PSM GY	EUR	14.695	3.30	Xetra	B4B GY	EUR	13.95	-7.62	Xetra
LEG GY	EUR	107.75	2.86	Xetra	DRI GY	EUR	31.22	-6.41	Xetra
LDO IM	EUR	10.02	2.71	Borsa Italiana	ARGX BB	EUR	105.7	-6.29	EN Brussels
VNA GY	EUR	47.66	2.69	Xetra	MT NA	EUR	16.688	-6.09	EN Amsterdam

Global Overview:

United States:

US markets closed the day down. The main news of the day was the messages of President Trump, who announced that he was still willing to reach a trade agreement, at a crucial meeting today with the Chinese vice president and a day before to raise the tariff rate on Chinese products, on the other hand, respect to Uber's IPO (which will take place after the markets close), several analysts project a price per share of 44-45 dollars, which would give it a market value of 80.5-91.5 billion dollars. Among the stocks that rose today, highlights Chevron Corp (+3.1%) after declaring that it will not increase its offer of 33 billion dollars to buy Anadarko Petroleum, similarly, the shares of Tapestry Inc (+8.5%) rose after presenting results that exceeded the estimates and announcing a share buyback program for one billion dollars. In a dark spot, companies sensitive to commercial tensions, such as Intel Corp (-5.3%), 3M Co. (-1.9%) and Boeing Co (-1%) led the declines. Likewise, the sectors that fell the most were materials and technologies with -0.8% and -0.7% respectively.

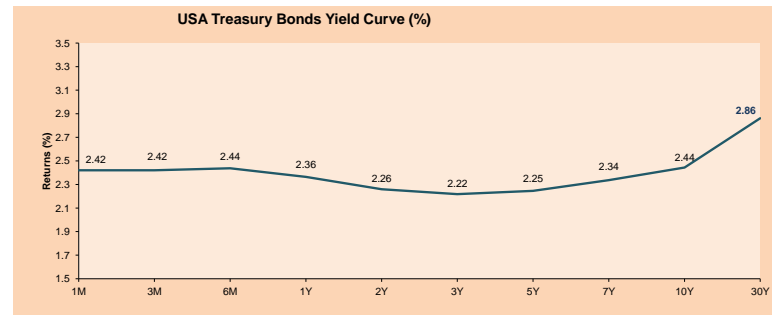
Europe:

The European market ended the day down, with investors leaving positions in favor of safer assets, while they are waiting to see if the talks between the United States and China will give tangible results and help avoid the worsening of ties that threaten to slow down world growth. In line with this, the pan-European STOXX 600 index fell 1.7%, while the volatility indicator on the blue chips of the euro zone reached its highest level in more than four months during the day. In other news, 27 leaders met two weeks before the European Parliament elections, agreeing: "Combat climate change, safeguard the rule of law and find a modern model for growth that should be at the heart of the European Union", which was intended to show unity despite the damage of Brexit. On the other hand, according to the member of the Monetary Policy Committee, Michael Saunders, it is unlikely that the Bank of England will raise interest rates at a very fast or high rate, even if the economy recovers after a mild Brexit. In the corporate sphere, Barclays, Citigroup, HSBC, JPMorgan and three other banks will be fined by EU antitrust regulators in the coming weeks for manipulating the multibillion-dollar foreign exchange market.

Asia:

The Asian market closed down among its main indices after the commercial tensions between the two main world economies increased. In Hong Kong, the Hang Seng ended at -3.39%, its lowest close since March 8, with the loss of 5.9% so far this week. Specifically, the sub-index of energy stocks decreased 1.4%, while the Information Technology sector decreased 2.3%, the financial sector ended with a 2.87% decrease and the real estate sector lost 2.07%. The previous session, President Donald Trump mentioned that China broke the agreement that had been reached in the trade negotiations, ensuring that it would not back down in the imposition of new tariffs on Chinese imports. Today, China's Ministry of Commerce said the country is prepared to defend its interests in its trade war with the United States, hoping that they can solve the problems through dialogue instead of unilateral steps. He added that, through a statement, "China deeply regrets that if the tariff measures of the United States are carried out, China will have to take the necessary measures." In corporate news, Yahoo Japan (+9.39%) soared after SoftBank Group (+0.70%) indicated it would spend \$4 billion to increase its stake in the company.

ETFs	Curr.	Close	1D	5D	30 D	YTD	Exchange
SPDR S&P 500 ETF TRUST	USD	286.66	-0.30%	-1.55%	-0.23%	15.21%	NYSE Arca
ISHARES MSCI EMERGING MARKET	USD	41.73	-1.58%	-4.51%	-5.82%	6.84%	NYSE Arca
ISHARES IBOXX HIGH YLD CORP	USD	85.99	-0.15%	-0.42%	0.04%	7.92%	NYSE Arca
FINANCIAL SELECT SECTOR SPDR	USD	27.30	-0.22%	-1.87%	3.37%	15.19%	NYSE Arca
VANECK VECTORS GOLD MINERS E	USD	20.43	-0.24%	1.29%	-10.47%	-3.13%	NYSE Arca
ISHARES RUSSELL 2000 ETF	USD	156.19	-0.36%	-0.84%	0.64%	16.96%	NYSE Arca
SPDR GOLD SHARES	USD	121.20	0.24%	1.05%	-1.58%	-0.04%	NYSE Arca
ISHARES 20+ YEAR TREASURY BO	USD	124.92	0.41%	1.31%	0.97%	3.70%	NASDAQ GM
INVESCO QQQ TRUST SERIES 1	USD	184.77	-0.54%	-1.78%	0.16%	20.00%	NASDAQ GM
ISHARES NASDAQ BIOTECHNOLOGY	USD	105.34	-0.24%	-0.60%	-6.45%	9.24%	NASDAQ GM
ENERGY SELECT SECTOR SPDR	USD	63.75	0.00%	0.14%	-4.96%	12.03%	NYSE Arca
PROSHARES ULTRA VIX ST FUTUR	USD	41.13	-0.39%	22.01%	8.04%	-49.68%	NYSE Arca
UNITED STATES OIL FUND LP	USD	12.81	-0.62%	-0.08%	-3.90%	32.61%	NYSE Arca
ISHARES MSCI BRAZIL ETF	USD	40.29	-1.52%	-0.89%	-4.25%	5.47%	NYSE Arca
SPDR S&P OIL & GAS EXP & PR	USD	29.66	-0.37%	2.35%	-5.51%	12.07%	NYSE Arca
UTILITIES SELECT SECTOR SPDR	USD	56.94	-0.12%	-1.79%	-1.54%	8.39%	NYSE Arca
ISHARES US REAL ESTATE ETF	USD	85.97	0.23%	-1.15%	-1.20%	15.54%	NYSE Arca
SPDR S&P BIOTECH ETF	USD	84.32	-0.20%	-0.31%	-7.80%	17.52%	NYSE Arca
ISHARES IBOXX INVESTMENT GRA	USD	118.79	0.09%	0.33%	0.43%	6.57%	NYSE Arca
ISHARES JP MORGAN USD EMERGI	USD	108.96	-0.30%	-0.17%	-0.22%	6.59%	NASDAQ GM
REAL ESTATE SELECT SECT SPDR	USD	35.70	0.34%	-1.11%	-1.54%	15.82%	NYSE Arca
ISHARES CHINA LARGE-CAP ETF	USD	41.70	-1.70%	-5.49%	-8.57%	6.70%	NYSE Arca
CONSUMER STAPLES SPDR	USD	56.62	-0.21%	-0.63%	1.56%	12.11%	NYSE Arca
VANECK VECTORS JUNIOR GOLD M	USD	28.54	-0.31%	1.28%	-12.13%	-5.56%	NYSE Arca
SPDR BBG BARC HIGH YIELD BND	USD	107.50	-0.18%	-0.46%	0.12%	8.72%	NYSE Arca
VANGUARD REAL ESTATE ETF	USD	85.94	0.26%	-1.14%	-1.09%	16.07%	NYSE Arca



Source: Bloomberg

.Capital Market Laboratory Coordinador: Economist Bruno Bellido Anicama
Collaboration: Juan Carlos Figueroa, Pablo Llanos, Jorge Retamozo and Marcia Rojas
e-mail: pulsobursatil@ulima.edu.pe
facebook: www.facebook.com/pulsobursatil
Phone number: 4376767 Annex: 35340

The content of this document is just for informational purposes. The information and opinions expressed should not be considered as recommendations for future decisions. Under any circumstances, the Capital Market Laboratory of University of Lima will be responsible for the use of the statements in this document.

PULSO BURSÁTIL

LIMA

Stocks

	Ticker	Currency	Price	1D*	5D*	30D*	YTD*	Frequency	Volume (US\$)	Beta	Dividend Yield (%)	Price Earning	Market Cap. (M US\$)	Economic Sector*	Index Weight
-	ALICORC1 PE**	S/.	10.75	0.00%	0.47%	-0.55%	10.45%	94.12%	9,732	0.70	2.23	20.74	2,766.47	Industrial	3.53%
▼	ATACOB1 PE**	S/.	0.25	-3.47%	-3.10%	-19.35%	-22.36%	82.35%	31,532	0.35	0.00	6.86	71.28	Mining	1.02%
▲	BACKUS1 PE**	S/.	22.50	0.45%	2.27%	2.97%	11.48%	70.59%	11,523	0.44	5.99	8.01	9,131.69	Industrial	0.82%
▼	BAP PE**	US\$	224.65	-0.90%	-5.23%	-4.12%	4.12%	100.00%	969,945	1.07	2.69	-	17,918.41	Diverse	5.82%
▼	BVN PE**	US\$	15.22	-1.49%	-0.52%	-12.26%	-5.12%	100.00%	178,342	1.38	0.76	-	4,195.16	Mining	5.88%
▼	CASAGRC1 PE**	S/.	3.59	-1.37%	4.06%	-10.25%	-11.58%	100.00%	5,416	0.57	0.53	12.70	91.26	Agricultural	1.31%
▼	CONTINC1 PE**	S/.	3.80	-1.55%	-0.78%	-3.75%	-0.11%	94.12%	166,003	0.82	3.98	14.24	6,156.28	Finance	2.85%
-	CORARE11 PE**	S/.	0.77	0.00%	1.32%	-1.91%	13.57%	100.00%	107,208	0.99	7.27	4.12	336.60	Industrial	1.72%
▲	CPACASC1 PE**	S/.	6.08	0.83%	-2.72%	-7.74%	-5.74%	94.12%	52,465	0.50	6.20	33.78	783.26	Industrial	2.38%
-	CVERDEC1 PE**	US\$	22.70	0.00%	0.00%	-5.30%	11.09%	88.24%	11,214	0.91	1.89	43.74	7,946.27	Mining	5.25%
▼	ENGEP1 PE**	S/.	2.28	-0.87%	0.88%	1.29%	19.00%	82.35%	4,203	0.66	5.67	10.08	1,953.15	Public Services	1.44%
-	ENDISPC1**	S/.	5.35	0.00%	0.94%	-0.76%	3.34%	76.47%	6,458	0.74	4.03	9.25	1,030.94	Public Services	0.98%
▼	FERREYC1 PE**	S/.	2.47	-1.20%	1.23%	4.79%	2.32%	100.00%	205,716	0.65	5.04	9.58	727.24	Diverse	4.90%
▼	GRAMONC1 PE**	S/.	2.10	-7.89%	-7.08%	-12.50%	5.53%	88.24%	54,423	0.49	0.00	-	462.25	Diverse	4.05%
▼	IFS PE**	US\$	44.75	-0.56%	1.70%	1.58%	10.65%	94.12%	902,779	0.65	3.91	14.97	5,061.71	Diverse	7.22%
-	INRETC1 PE**	US\$	37.10	0.00%	-4.03%	4.58%	32.26%	100.00%	235,251	1.00	0.92	60.84	3,814.15	Diverse	5.28%
▼	LUSURC1 PE**	S/.	12.00	-0.83%	0.93%	1.01%	10.69%	94.12%	735,291	0.47	6.17	10.84	1,763.36	Public Services	1.81%
-	MINSUR1 PE**	S/.	1.60	0.00%	-3.03%	-10.61%	21.21%	76.47%	3,627	1.43	0.00	-	1,392.00	Mining	3.09%
-	PML PE**	US\$	0.15	0.00%	-0.67%	-3.87%	-14.86%	52.94%	2,820	1.58	0.00	-	39.31	Mining	2.12%
▼	RELAPAC1 PE**	S/.	0.15	-0.68%	-3.97%	-13.17%	15.08%	100.00%	18,773	0.45	0.00	-	364.02	Industrial	2.12%
▼	SCCO PE**	US\$	35.27	-2.78%	-7.18%	-13.07%	19.52%	88.24%	41,105	-	5.80	18.66	27,265.28	Mining	2.14%
▲	SIDERC1 PE**	S/.	0.85	1.19%	1.19%	-1.85%	60.68%	100.00%	53,614	1.42	3.96	0.11	314.96	Industrial	1.43%
▼	TV PE**	US\$	0.26	-0.38%	1.96%	-24.64%	-12.46%	94.12%	10,141	1.92	0.00	-	212.58	Mining	2.93%
-	UNACEMC1 PE**	S/.	2.60	0.00%	4.00%	-3.70%	0.50%	70.59%	14,566	0.85	2.00	16.17	1,426.50	Industrial	3.00%
▼	VOLCABC1 PE**	S/.	0.53	-1.85%	-1.85%	-13.11%	-25.35%	100.00%	61,024	0.97	2.58	39.57	652.00	Mining	5.90%

Quantity of shares: 25

Source: Bloomberg, Económica

* Bloomberg Industry Classification System

** PER is used in the stock market and original currency of the instrument

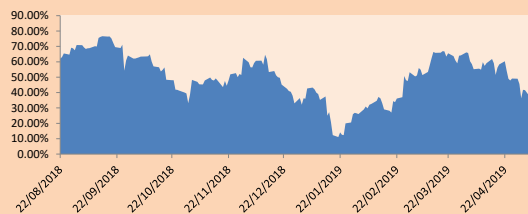
*Legend: Variation 1D: 1 Day; 5D: 5 Days; 1M: 1 Month; YTD: Var.% 12/31/18 to date

Sectorial Indices

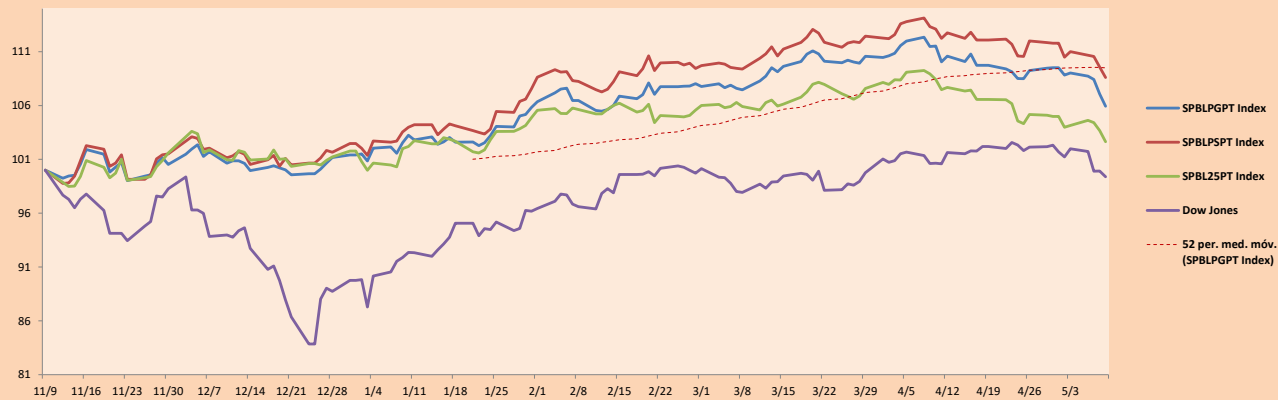
	Close	1D*	5D*	30D*	YTD*	Beta
▼ Mining Index	288.11	-1.72%	-3.71%	-11.65%	1.15%	1.57
▲ Consumer Index	1,180.81	0.07%	-1.10%	2.19%	17.42%	0.41
▼ Industrial Index	231.19	-1.78%	-0.76%	-3.14%	1.89%	0.59
▼ Banking and Financial Index	1,233.80	-0.85%	-4.39%	-2.99%	2.82%	1.20
▼ Construction Index	250.39	-2.13%	-1.71%	-6.76%	1.83%	0.65
▼ Services Index	449.21	-0.43%	1.15%	1.36%	12.98%	0.13
▲ Juniors Index	23.11	0.09%	-0.47%	-8.11%	-21.50%	0.56
▼ Electric Index	438.54	-0.43%	1.15%	1.36%	12.98%	0.13

*Legend: Variation 1D: 1 Day; 5D: 5 Days; 1M: 1 Month; YTD: Var.% 12/31/18 to date

Correlation Graph of Returns of Mining Index against Metallic Index of London (3 months)



Indices (6 months)



Source: Bloomberg

Capital Market Laboratory Coordinator: Economist Bruno Bellido Anicama
 Collaboration: Juan Carlos Figueroa, Pablo Llanos, Jorge Retamozo and Marcia Rojas.
 e-mail: pulsohorsatil@ulima.edu.pe
 facebook: www.facebook.com/pulsohorsatil.ulima
 Phone number : 4376767 Annex: 35340

The content of this document is just for informational purposes. The information and opinions expressed should not be consider as recommendations for future decisions. Under any circumstances, the Capital Market Laboratory of University of Lima will be responsible for the use of the statements in this document.

PULSO BURSÁTIL

SOVEREIGN RATING

RISK RATINGS

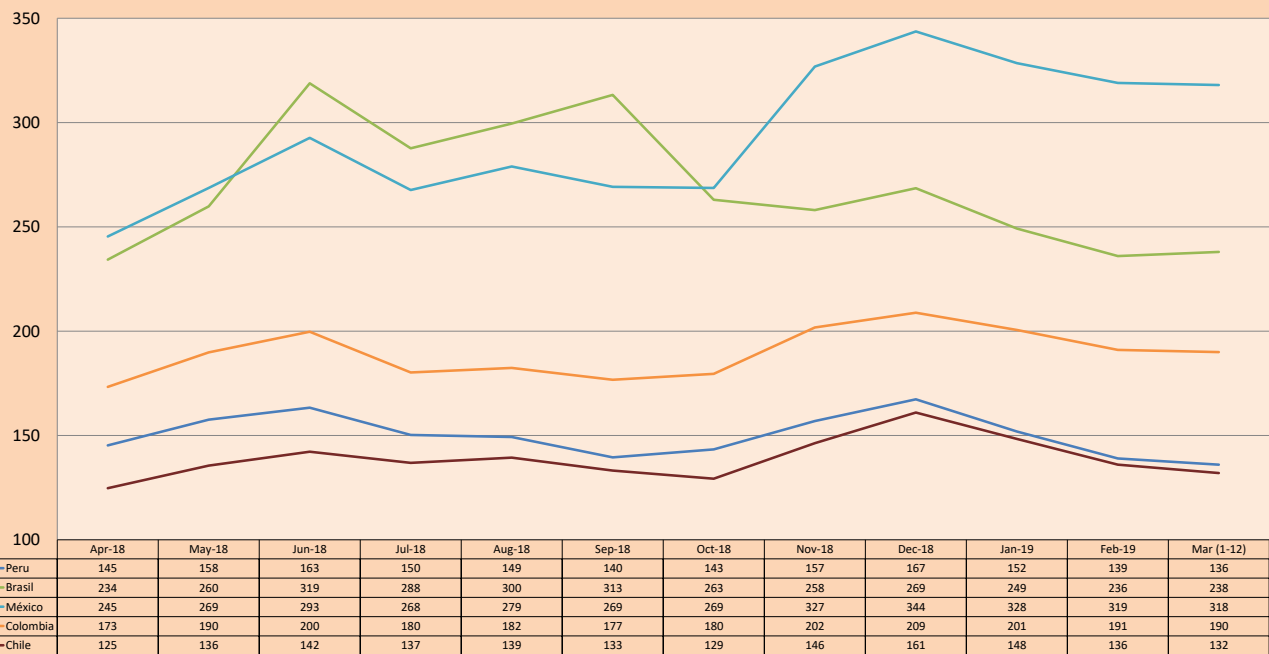
Moody's	S&P	Fitch	
Aaa	AAA	AAA	Prime
Aa1	AA+	AA+	High credit quality
Aa2	AA	AA	
Aa3	AA-	AA-	
A1	A+	A+	Medium-high grade, with low credit risk
A2	A	A	
A3	A-	A-	
Baa1	BBB+	BBB+	Moderate Credit Risk
Baa2	BBB	BBB	
Baa3	BBB-	BBB-	
Ba1	BB+	BB+	It has speculative elements and it is subject to substantial credit risk
Ba2	BB	BB	
Ba3	BB-	BB-	
B1	B+	B+	It is considered speculative and it has high credit risk
B2	B	B	
B3	B-	B-	
Caa1	CCC+		Bad credit conditions and it is subject to high credit risk
Caa2	CCC		
Caa3	CCC-	CCC	
Ca	C		Very close to default or in default
		DDD	
		DD	
		D	

Source: Bloomberg

Latin America Credit Rating			
Clasificadora de riesgo			
Country	Moody's	Fitch	S&P
Peru	A3	BBB+	BBB+
Mexico	A3	BBB+	BBB+
Venezuela	C	C	SD
Brazil	Ba2	BB-	BB-
Colombia	Baa2	BBB	BBB-
Chile	A1	A	A+
Argentina	B2	B	B
Panama	Baa1	BBB	BBB+

Source: Bloomberg

LATAM Country Risk (bps)



Source: BCRP

Capital Market Laboratory Coordinator: Economist Bruno Bellido Anicama
 Collaboration: Juan Carlos Figueroa, Pablo Llanos, Jorge Retamozo and Marcia Rojas.

e-mail: pulsobursatil@ulima.edu.pe
 facebook: www.facebook.com/pulsobursatil.ul
 Phone number : 4376767 Annex: 35340

The content of this document is just for informational purposes. The information and opinions expressed should not be considered as recommendations for future decisions. Under any circumstances, the Capital Market Laboratory of University of Lima will be responsible for the use of the statements in this document.