



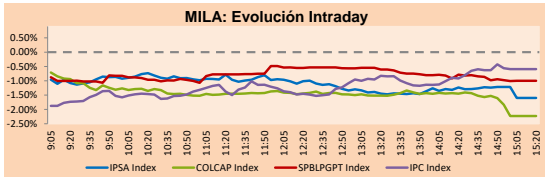
# PULSO BURSÁTIL

Lima, May 13, 2019

## MILA

Main Indices	Close	1 D	5 D	1 M	YTD	Market Cap. (US\$ bill)
▼ IPSA (Chile)	4,969.82	-1.60%	-3.01%	-5.15%	-2.66%	153.84
▼ IGPA (Chile)	25,367.29	-1.46%	-2.72%	-4.53%	-2.24%	198.45
▼ IGBC (Colombia)	12,363.24	-2.36%	-1.46%	-5.84%	10.94%	101.38
▼ COLCAP (Colombia)	1,515.81	-2.23%	-2.15%	-5.56%	14.32%	103.18
▼ S&P/BVL (Perú)*	19,951.96	-1.03%	-3.83%	-5.44%	3.11%	106.46
▼ S&P/BVL SEL (Perú)	536.98	-0.93%	-2.95%	-4.75%	4.81%	78.94
▼ S&P/BVL LIMA 25	26,299.51	-1.14%	-3.50%	-6.23%	-0.79%	87.28
▼ IPC (México)	43,142.46	-0.55%	-2.21%	-3.45%	3.61%	277.13
▲ S&P MILA 40	637.00	0.15%	-2.02%	-7.86%	4.66%	271.24

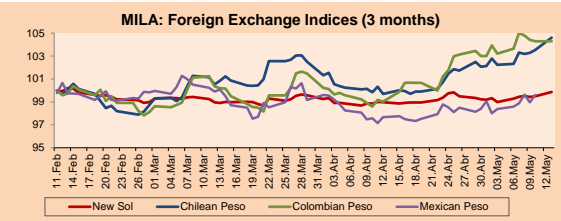
\* Market Cap. Of the last price Legend: Variation 1D: 1 day; 5D: 5 days; 1M: 1 Month; YTD: Var%12/31/18 to date



Source: Bloomberg

Currency	Price	1D*	5D*	30 D*	YTD*
▲ New Sol (PEN)	3,328.2	0.39%	0.59%	0.92%	-1.21%
▲ Chilean Peso (CLP)	693.56	1.02%	2.24%	4.93%	-0.01%
▲ Colombian Peso (COP)	3,274.30	0.00%	0.62%	5.32%	0.76%
▲ Mexican Peso (MXN)	19.23	0.68%	1.28%	2.56%	-2.12%

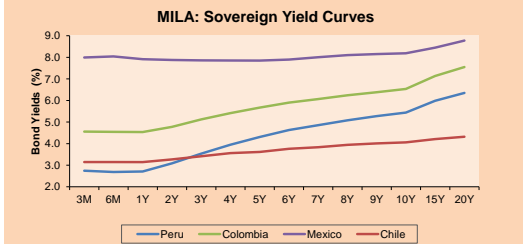
\* Legend: Variation 1D: 1 day; 5D: 5 days; 1M: 1 Month; YTD: Var%12/31/18 to date



Base: 11/02/19=100 Source: Bloomberg

### Fixed Income

Instrument	Currency	Price	Bid Yield (%)	Ask Yield (%)	Duration
PERU 4.125 08/25/2027	USD	107.927	3.06	3.01	7.01
PERU 7.35 07/21/25	USD	124.705	2.98	2.92	5.05
PERU 8.75 11/21/33	USD	155.068	3.80	3.77	9.34
PERU 6.55 03/14/37	USD	133.815	3.92	3.89	11.15
PERU 5.625 11/18/2050	USD	127.716	4.07	4.05	16.45
CHILE 2.25 10/30/22	USD	99.11	2.58	2.47	3.30
CHILE 3.875 08/05/20	USD	101.952	2.35	2.14	1.19
CHILE 3.625 10/30/2042	USD	99.059	2.70	3.67	15.86
COLOM 11.75 02/25/20	USD	107.022	2.69	2.44	0.75
COLOM 11.85 03/09/28	USD	158.187	4.00	3.93	6.19
COLOM 10.375 01/28/33	USD	154.538	4.91	4.83	8.47
COLOM 7.375 09/18/37	USD	129.444	4.93	4.91	11.04
COLOM 6.125 01/18/41	USD	116.281	4.91	4.88	12.58
MEX 4 10/02/23	USD	102.877	3.33	3.25	3.99
MEX5.55 01/45	USD	109.116	4.931	4.91	14.09



Source: Bloomberg

Equity	Exchange	Amt.	Price	▲ %
Largest gains				
ESVAL-A	Santia.	CLP	0.00	102.14
SIEMEL	Santia.	CLP	260.00	8.11
CUPRUM	Santia.	CLP	53.00	6.84
ENLASA	Santia.	CLP	750.00	6.59

Per Turnover	Exchange	Amount (US\$)
FALABELLA	Santia.	17,719,649
PFBOCOLM	Colomb.	9,867,630
ECOPETROL	Colomb.	9,642,794
SOM-B	Santia.	7,932,934
BSANTANDER	Santia.	6,242,171

Largest losses	Exchange	Amt.	Price	▼ %
FUTURA1H	Lima	PEN	0.90	-10.89
DNT	Lima	USD	0.04	-9.09
COLBUN	Santia.	CLP	126.50	-4.54
CVERDEC1	Lima	USD	21.70	-4.41

Per Volume	Exchange	Volume
BSANTANDER	Santia.	90,132,874
CHILE	Santia.	20,318,037
VAPORES	Santia.	12,597,704
COLBUN	Santia.	11,522,556

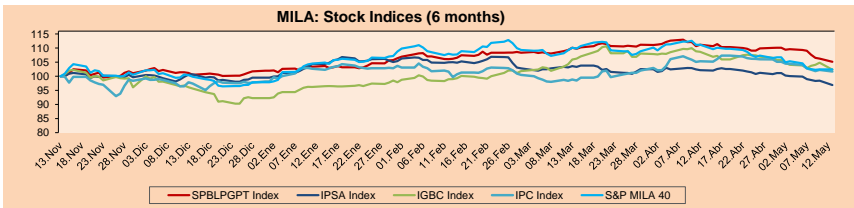
## MILA

**Peru:** The General Index of the BVL ended today's session with a negative result of -1.03%. The index maintains a cumulative positive annual trend of +3.11% in local currency, while the adjusted yield in dollars amounts to +4.37%. Then, the S&P/BVL Peru SEL fell by -0.93% while the S & P / BVL LIMA 25 decreased -1.14%. Highlight: Peruvian currency records its biggest daily fall in more than three months due to commercial tension.

**Chile:** The IPSA index ended the day with a negative yield of -1.60%. The sectors of the index with the most negative results were Industrial (-3.74%) and Energy (-2.55%). On the other hand, the securities with the lowest results were Enel Chile SA (-6.92%) and Enel Americas SA (-1.96%). Highlight: Chile's consumer price index may have been manipulated in August and September of last year, according to the National Institute of Statistics.

**Colombia:** The COLCAP index closed today's session with a negative yield of -2.23%. The sectors of the index that generated the most negative results were Industrial (-4.33%) and Finance (-2.84%). Finally, the stocks with the worst yields were Avianca Holdings SA (-4.79%) and Grupo Aval Acciones y Valores SA (-4.00%). Highlight: Investment in civil works in the first quarter of Colombia increased by 7.9%.

**Mexico:** The IPC index closed today's session with a negative yield of -0.55%. The sectors of the index that generated the most negative results were Communication Services (-1.33%) and Non-Basic Consumption Products (-1.04%). Finally, the stocks with the worst yields were Cemex SAB de CV (-3.38%) and Grupo Televisa SA (-2.91%). Highlight: Pemex obtains a syndicated loan of \$8 billion along with new tax exemptions for the energy producer.

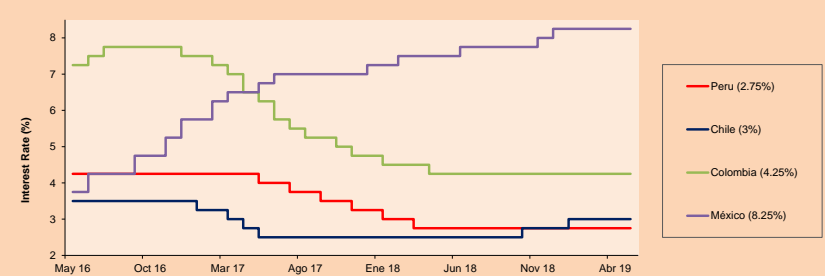


Base: 14/11/18=100 Source: Bloomberg

### ETFs

	Curr.	Close	1D	5D	30 D	YTD	Exchange
▼ iShares MSCI All Peru Capped Index Fund	USD	36.1	-1.29%	-4.52%	-8.14%	1.69%	NYSE Arca
▼ iShares MSCI Chile Capped	USD	40.05	-2.46%	-4.85%	-10.32%	-3.28%	Cboe BZX
▼ Global X MSCI Colombia	USD	12.6441	-2.63%	-2.47%	-8.90%	13.30%	NYSE Arca
▼ iShares MSCI Mexico Capped	USD	43.93	-1.48%	-3.87%	-5.55%	6.68%	NYSE Arca
▼ iShares MSCI Emerging Markets	USD	40.58	-3.33%	-6.30%	-8.52%	3.89%	NYSE Arca
▼ Vanguard FTSE Emerging Markets	USD	40.28	-3.38%	-6.02%	-7.89%	5.93%	NYSE Arca
▼ iShares Core MSCI Emerging Markets	USD	48.89	-3.32%	-6.25%	-8.36%	3.69%	NYSE Arca
▼ iShares JP Morgan Emerging Markets Bonds	USD	56.36	-2.47%	-4.73%	-5.91%	0.88%	Cboe BZX
▼ Morgan Stanley Emerging Markets Domestic	USD	6.47	-0.92%	-1.52%	-2.27%	9.18%	New York

## MILA: Policy Rate



Source: Bloomberg

Capital Market Laboratory Coordinador: Economist Bruno Bellido Anicama  
Collaboration: Juan Carlos Figueroa, Pablo Llanos, Jorge Retamozo and Marcia Rojas.  
e-mail: pulsobursatil@ulima.edu.pe  
facebook: www.facebook.com/pulsobursatil.ul  
Phone number : 4376767 Annex: 35340





# PULSO BURSÁTIL

## LIMA

### Stocks

Ticker	Currency	Price	1D*	5D*	30D*	YTD*	Frequency	Volume (US\$)	Beta	Dividend Yield (%)	Price Earning	Market Cap. (M US\$)	Economic Sector*	Index Weight
▼ ALICORC1 PE**	S/.	10.80	-0.46%	0.84%	-0.53%	10.96%	94.12%	340,421	0.67	2.22	20.84	2,766.45	Industrial	3.53%
ATACOB1 PE**	S/.	0.25	0.00%	-3.85%	-16.67%	-22.36%	82.35%	19,904	0.42	0.00	6.83	70.97	Mining	1.02%
- BACKUS1 PE**	S/.	23.00	0.00%	3.60%	4.55%	13.96%	76.47%	22,764	0.41	5.86	8.19	9,234.86	Industrial	0.82%
▼ BAP PE**	US\$	216.11	-3.13%	-9.12%	-8.16%	0.16%	100.00%	1,385,523	1.09	2.79	-	17,237.25	Diverse	5.82%
▲ BVN PE**	US\$	15.40	2.33%	-1.28%	-6.10%	-4.00%	100.00%	308,446	1.38	0.75	-	4,244.77	Mining	5.88%
▼ CASAGRC1 PE**	S/.	3.48	-2.52%	-4.66%	-11.90%	-14.29%	100.00%	33,014	0.59	0.55	12.31	88.08	Agricultural	1.31%
▼ CONTINC1 PE**	S/.	3.79	-0.26%	-2.82%	-3.78%	-0.37%	100.00%	5,220	0.82	3.99	14.20	6,113.51	Finance	2.85%
▼ CORARE11 PE**	S/.	0.74	-3.90%	-3.90%	-5.13%	9.14%	100.00%	61,847	0.96	7.56	3.96	333.33	Industrial	1.72%
▼ CPACASC1 PE**	S/.	5.97	-1.16%	-2.29%	-8.15%	-7.44%	94.12%	376,119	0.47	6.31	33.17	765.67	Industrial	2.38%
▼ CVERDEC1 PE**	US\$	21.70	-4.41%	-6.26%	-9.10%	6.20%	82.35%	5,859	0.94	1.97	41.81	7,596.22	Mining	5.25%
▼ ENGEPEC1 PE**	S/.	2.23	-0.89%	-0.89%	0.00%	17.99%	82.35%	11,640	0.65	4.77	9.86	1,902.05	Public Services	1.44%
- ENDISPC1**	S/.	5.32	0.00%	0.00%	-1.84%	3.32%	76.47%	2,411	0.72	0.00	9.25	1,026.48	Public Services	0.98%
▼ FERREYC1 PE**	S/.	2.46	-0.81%	-0.40%	3.14%	1.91%	100.00%	127,190	0.64	5.06	9.54	721.16	Diverse	4.90%
- GRAMONC1 PE**	S/.	2.10	0.00%	-7.89%	-4.55%	5.53%	88.24%	46,719	0.64	0.00	-	460.25	Diverse	4.05%
▼ IFS PE**	US\$	44.00	-0.27%	-0.27%	-0.66%	8.80%	94.12%	331,816	0.66	3.98	14.78	4,976.88	Diverse	7.22%
▼ INVRETC1 PE**	US\$	37.00	-0.27%	-3.29%	2.86%	31.91%	100.00%	7,881	1.00	0.92	38.99	3,803.87	Diverse	5.28%
- LUSURC1 PE**	S/.	12.00	0.00%	0.93%	1.01%	10.69%	88.24%	11,702	0.44	6.17	10.84	1,755.73	Public Services	1.81%
▼ MINSUR1 PE**	S/.	1.57	-1.88%	-4.27%	-12.29%	18.94%	82.35%	8,989	1.41	4.82	-	1,359.99	Mining	3.09%
- PML PE**	US\$	0.15	0.00%	-0.67%	-3.87%	-14.86%	41.18%	1,572	1.55	0.00	-	39.31	Mining	2.12%
- RELAPAC1 PE**	S/.	0.14	0.00%	-4.00%	-10.00%	14.29%	100.00%	3,303	0.47	0.00	-	359.94	Industrial	2.12%
▼ SCCO PE**	US\$	34.38	-4.21%	-6.14%	-15.47%	16.50%	88.24%	29,021	-	5.95	18.19	26,577.27	Mining	2.14%
- SIDERC1 PE**	S/.	0.87	0.00%	2.35%	2.35%	64.46%	100.00%	16,850	1.38	3.87	0.11	320.98	Industrial	1.43%
▼ TV PE**	US\$	0.25	-3.85%	-8.09%	-23.55%	-15.82%	100.00%	10,235	1.85	0.00	-	204.40	Mining	2.93%
- UNACEMC1 PE**	S/.	2.60	0.00%	0.00%	-2.26%	0.50%	70.59%	399,002	0.82	2.00	16.17	1,420.33	Industrial	3.00%
▼ VOLCABC1 PE**	S/.	0.49	-3.92%	-9.26%	-18.33%	-30.99%	100.00%	326,663	0.98	2.79	36.44	600.18	Mining	5.90%

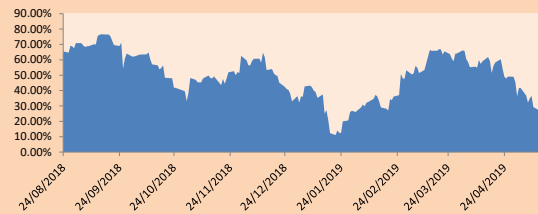
Quantity of shares: 25  
 Source: Bloomberg, Económica  
 \* Bloomberg Industry Classification System  
 \*\* PER is used in the stock market and original currency of the instrument  
 \*Legend: Variation 1D: 1 Day; 5D: 5 Days; 1M: 1 Month; YTD: Var.% 12/31/18 to date

### Sectorial Indices

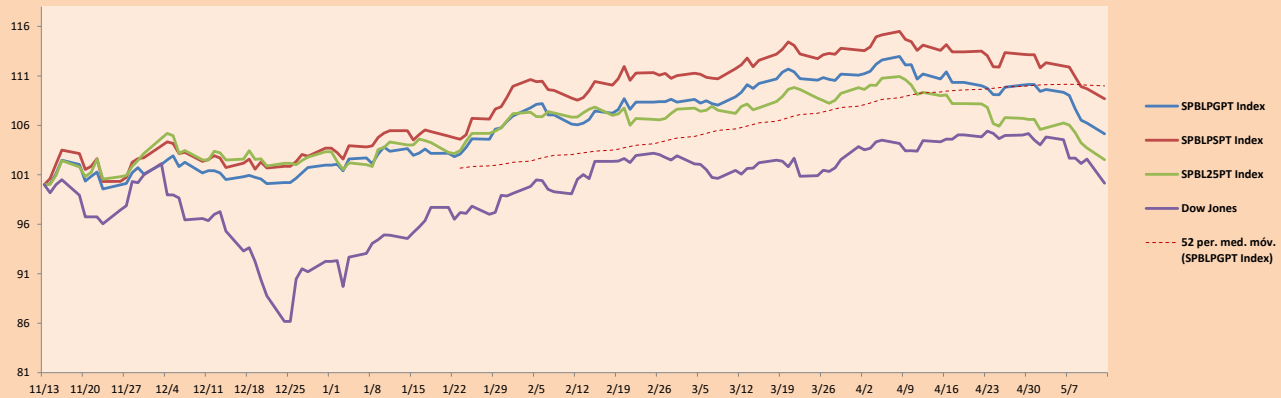
	Close	1D*	5D*	30D*	YTD*	Beta
▼ Mining Index	285.41	-0.93%	-3.67%	-10.30%	0.20%	1.54
▼ Consumer Index	1,186.43	-0.19%	-0.42%	1.77%	17.98%	0.40
▼ Industrial Index	230.04	-0.54%	-2.15%	-2.13%	1.38%	0.57
▼ Banking and Financial Index	1,196.93	-2.29%	-7.47%	-6.18%	-0.25%	1.24
▼ Construction Index	249.01	-0.42%	-3.04%	-4.53%	1.27%	0.66
▲ Services Index	443.34	0.35%	-1.08%	-0.21%	11.50%	0.12
▼ Juniors Index	22.33	-0.84%	-3.67%	-6.84%	-24.15%	0.54
▲ Electric Index	432.81	0.35%	-1.08%	-0.21%	11.50%	0.12

\*Legend: Variation 1D: 1 Day; 5D: 5 Days; 1M: 1 Month; YTD: Var.% 12/31/18 to date

Correlation Graph of Returns of Mining Index against Metallic Index of London (3 months)



Indices (6 months)



Source: Bloomberg

Capital Market Laboratory Coordinator: Economist Bruno Bellido Anicama  
 Collaboration: Juan Carlos Figueroa, Pablo Llanos, Jorge Retamozo and Marcia Rojas.  
 e-mail: pulsobursatil@ulima.edu.pe  
 facebook: www.facebook.com/pulsobursatil.ul  
 Phone number : 4376767 Annex: 35340

The content of this document is just for informational purposes. The information and opinions expressed should not be considered as recommendations for future decisions. Under any circumstances, the Capital Market Laboratory of University of Lima will be responsible for the use of the statements in this document.



# PULSO BURSÁTIL

## SOVEREIGN RATING

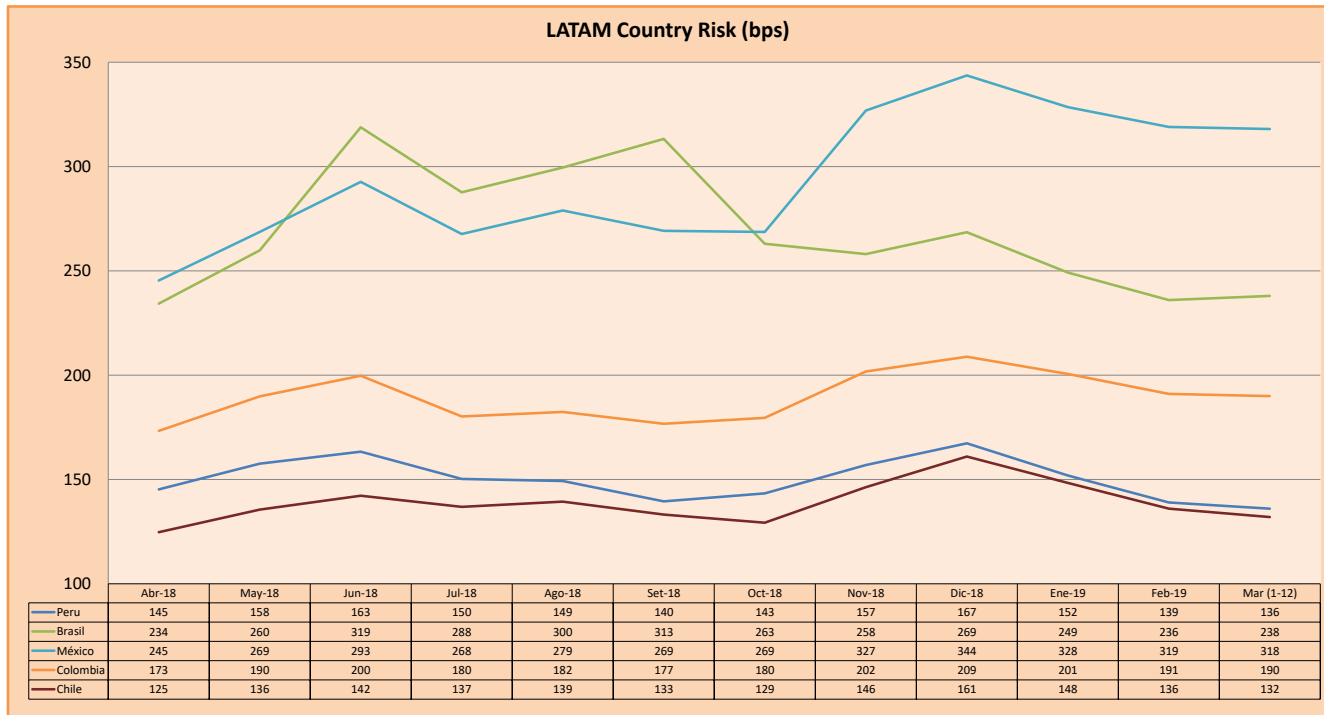
### RISK RATINGS

Moody's	S&P	Fitch	
Aaa	AAA	AAA	Prime
Aa1	AA+	AA+	High credit quality
Aa2	AA	AA	
Aa3	AA-	AA-	
A1	A+	A+	Medium-high grade, with low credit risk
A2	A	A	
A3	A-	A-	
Baa1	BBB+	BBB+	Moderate Credit Risk
Baa2	BBB	BBB	
Baa3	BBB-	BBB-	
Ba1	BB+	BB+	It has speculative elements and it is subject to substantial credit risk
Ba2	BB	BB	
Ba3	BB-	BB-	
B1	B+	B+	It is considered speculative and it has high credit risk
B2	B	B	
B3	B-	B-	
Caa1	CCC+		Bad credit conditions and it is subject to high credit risk
Caa2	CCC		
Caa3	CCC-	CCC	
Ca	C		Very close to default or in default
		DDD	
C	D	DD D	

Source: Bloomberg

Latin America Credit Rating			
Clasificadora de riesgo			
Country	Moody's	Fitch	S&P
Peru	A3	BBB+	BBB+
Mexico	A3	BBB+	BBB+
Venezuela	C	C	SD
Brazil	Ba2	BB-	BB-
Colombia	Baa2	BBB	BBB-
Chile	A1	A	A+
Argentina	B2	B	B
Panama	Baa1	BBB	BBB+

Source: Bloomberg



Source: BCRP

Capital Market Laboratory Coordinator: Economist Bruno Bellido Anicama  
 Collaboration: Juan Carlos Figueroa, Pablo Llanos, Jorge Retamozo and Marcia Rojas.  
 e-mail: pulsobursatil@ulima.edu.pe  
 facebook: www.facebook.com/pulsobursatil.ul  
 Phone number : 4376767 Annex: 35340

The content of this document is just for informational purposes. The information and opinions expressed should not be considered as recommendations for future decisions. Under any circumstances, the Capital Market Laboratory of University of Lima will be responsible for the use of the statements in this document.