



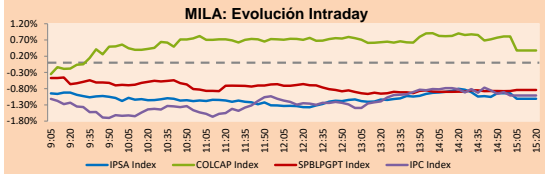
# PULSO BURSÁTIL

Lima, August 2, 2019

## MILA

Main Indices	Close	1 D	5 D	1 M	YTD	Market Cap. (US\$ bill)
▼ IPSA (Chile)	4,885.29	-1.12%	-1.92%	-2.48%	-4.31%	139.87
▼ IGPA (Chile)	24,855.01	-1.04%	-1.73%	-2.59%	-4.22%	181.30
▲ IGBC (Colombia)	12,554.85	0.29%	-2.19%	-0.03%	12.66%	97.34
▲ COLCAP (Colombia)	1,543.38	0.38%	-2.35%	-0.02%	16.40%	92.92
▲ S&P/BVL (Perú)*	19,695.44	-0.84%	-4.82%	-4.99%	1.78%	102.87
▲ S&P/BVL SEL (Perú)	514.69	-0.91%	-5.12%	-6.19%	0.46%	74.99
▲ S&P/BVL LIMA 25	24,878.54	-0.30%	-4.73%	-5.28%	-6.15%	84.08
▲ IPC (México)	39,977.52	-0.92%	-1.71%	-7.97%	-3.99%	262.68
▲ S&P MILA 40	612.02	-1.75%	-4.20%	-5.07%	0.56%	254.59

\* Market Cap. Of the last price Legend: Variation 1D: 1 day; 5D: 5 days; 1M: 1 Month; YTD: Var%12/31/18 to date

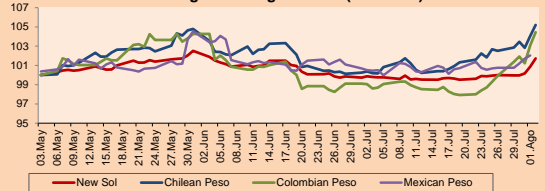


Source: Bloomberg

Currency	Price	1D*	5D*	30 D*	YTD*
▲ New Sol (PEN)	3,355.8	0.87%	1.74%	1.95%	-0.39%
▲ Chilean Peso (CLP)	713.16	1.10%	2.62%	5.00%	2.82%
▲ Colombian Peso (COP)	3,384.50	1.31%	4.54%	5.92%	4.15%
▲ Mexicano Peso (MXN)	19.30	0.32%	1.33%	1.52%	-1.76%

\* Legend: Variation 1D: 1 day; 5D: 5 days; 1M: 1 Month; YTD: Var%12/31/18 to date

### MILA: Foreign Exchange Indices (3 months)

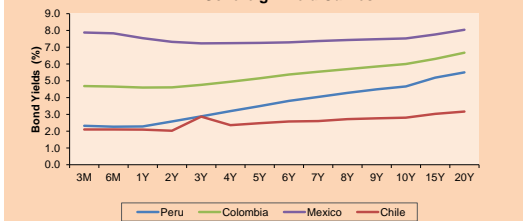


Base: 03/05/19=100 Source: Bloomberg

### Fixed Income

Instrument	Currency	Price	Bid Yield (%)	Ask Yield (%)	Duration
PERU 4.125 08/25/2027	USD	111.976	2.49	2.46	6.83
PERU 7.35 07/21/25	USD	127.881	2.33	2.29	5.00
PERU 8.75 11/21/33	USD	164.306	3.13	3.13	9.57
PERU 6.55 03/14/37	USD	143.262	3.30	3.29	11.17
PERU 5.625 11/18/2050	USD	140.692	3.48	3.48	17.33
CHILE 2.25 10/30/22	USD	100.501	2.14	2.04	3.09
CHILE 3.875 08/05/20	USD	101.923	2.06	1.78	0.98
CHILE 3.625 10/30/2042	USD	106.433	3.24	3.22	16.00
COLOM 11.75 02/25/20	USD	105.354	2.07	1.85	0.53
COLOM 11.85 03/09/28	USD	158.759	3.82	3.74	5.98
COLOM 10.375 01/28/33	USD	157.738	4.64	4.53	8.62
COLOM 7.375 09/18/37	USD	138.577	4.31	4.27	11.11
COLOM 6.125 01/18/41	USD	125.765	4.29	4.26	13.07
MEX 4 10/02/23	USD	105.078	2.74	2.66	3.78
MEX 5.55 01/45	USD	116.156	4.887	4.473	14.6

### MILA: Sovereign Yield Curves



Source: Bloomberg

Equity	Exchange	Amt.	Price	▲ %
<b>Largest gains</b>				
VOLCABC1	Lima	PEN	0.48	4.40
COE	Santia.	CLP	610.00	3.48
SIDERC1	Lima	PEN	0.62	3.33
PFBCOLOM	Colomb.	COP	41420.00	3.03
<b>Per Turnover</b>				
PFBCOLOM	Colomb.		13,369,021	
ECOPETROL	Colomb.		8,998,599	
ISA	Colomb.		8,700,745	
FALABELLA	Santia.		7,862,173	
SQM-B	Santia.		7,484,372	

Largest losses	Exchange	Amt.	Price	▼ %
POTASIOS-A	Santia.	CLP	72.00	-20.00
CAMPOS	Santia.	CLP	25.10	-13.45
HIPERMARC	Santia.	CLP	3.25	-9.72
Fabricato	Colomb.	COP	5.55	-7.19

Per Volume	Exchange	Volume
BSANTANDER	Santia.	68,582,385
CHILE	Santia.	38,746,897
COLBUN	Santia.	23,190,161
VAPORES	Santia.	15,277,854
ECOPETROL	Colomb.	10,432,899

## LATIN AMERICA

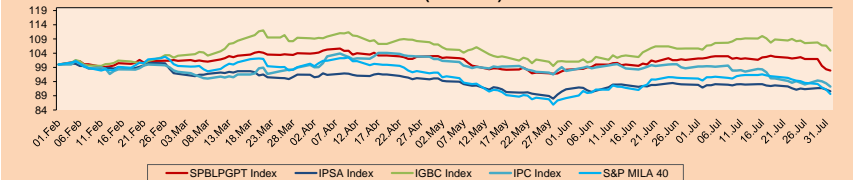
**Peru:** The General index of the BVL ended today's session with a negative result of -0.84%. The index maintains a cumulative positive annual trend of +1.78% in local currency, while the yield adjusted in dollars amounts to +3.29%. Then, the S&P/BVL Peru SEL withdrew -0.91% while the S&P/BVL LIMA 25 decreased -0.30%. The spot PEN reached S/3,355.8. Headline: PEN-USD Exchange closed at 3.35 by a climb in commercial war.

**Chile:** The IPSA index ended the day with a negative return of -1.12%. The sectors of the index with the lowest results were Industrials (-2.36%) and Materials (-1.79%). On the other hand, the values with the lowest results were Colbun SA (-2.86%) and Salfacorp SA (-2.72%). Highlight: Dollar leaps to 713 COP in the last day of the week.

**Colombia:** The COLCAP index closed the session with a positive result of +0.38%. The sectors with the highest yields were Industrials (+3.24%) and Consumer Staples (+1.27%). In addition, the stocks with the best yields were Avianca Holdings SA (+4.13%) and Bancolombia SA (+3.03%). Headline: Exports plummeted to 3.043 million dollars in June.

**Brazil:** The IBOV index closed the session with a positive result of +0.54%. The sectors with the best performances were Energy (+2.87%) and Consumer Discretionary (+1.36%). In addition, the stocks with the best performances were Raia Drogasil SA (+3.75%) and Kroton Educacional SA (+3.72%). Highlight: Petrobras far exceeds forecast of quarter results due to assets sell.

### MILA: Stock Indices (6 months)

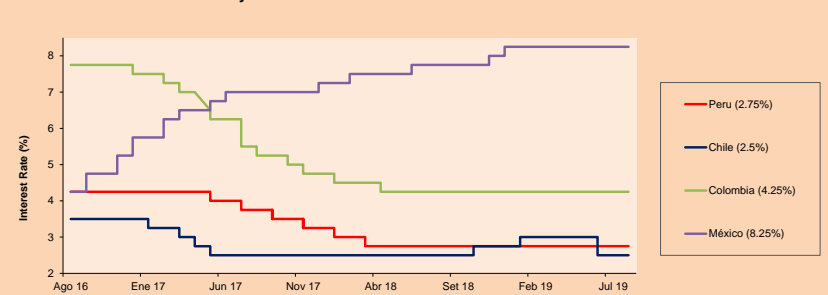


Base: 04/02/19=100 Source: Bloomberg

### ETFs

	Curr.	Close	1D	5D	30 D	YTD	Exchange
▼ iShares MSCI All Peru Caped Index Fund	USD	34.87	-1.61%	-6.44%	-6.33%	0.05%	NYSE Arca
▼ iShares MSCI Chile Capped	USD	37.27	-1.87%	-4.87%	-7.84%	-8.27%	Cboe BZX
▼ Global X MSCI Colombia	USD	12,5432	-1.54%	-5.64%	-4.25%	14.53%	NYSE Arca
▼ iShares MSCI Mexico Capped	USD	40.23	-1.28%	-3.04%	-8.53%	-0.32%	NYSE Arca
▼ iShares MSCI Emerging Markets	USD	40.55	-0.98%	-5.04%	-6.20%	4.61%	NYSE Arca
▼ Vanuquard FTSE Emerging Markets	USD	40.61	-0.95%	-4.72%	-5.84%	7.53%	NYSE Arca
▼ iShares Core MSCI Emerging Markets	USD	48.7	-1.04%	-4.96%	-6.11%	4.32%	NYSE Arca
▼ iShares JP Morgan Emerging Markets Bonds	USD	56.79	-0.37%	-3.09%	-4.07%	2.76%	Cboe BZX
▼ Morgan Stanley Emerging Markets Domestic	USD	6.92	-1.70%	-1.70%	0.14%	19.31%	New York

### MILA: Policy Rate



Source: Bloomberg

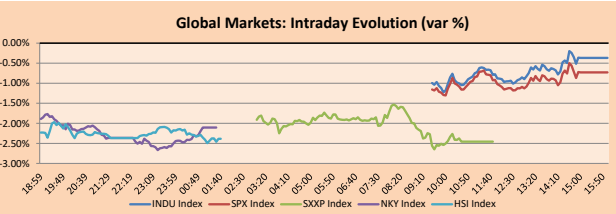
Capital Market Laboratory Coordinador: Economist Bruno Bellido Anicam  
Collaboration: Juan Carlos Figueroa, Pablo Llanos, y Marcia Rojas.  
e-mail: pulsobursatil@ulima.edu.pe  
facebook: www.facebook.com/pulsobursatil.ul  
Phone number : 4376767 Annex: 35340

# PULSO BURSÁTIL

## WORLD

Main Indices	Close	1 D*	5 D*	1 M*	YTD*	Market Cap. (US\$ Mill.)
▼ Dow Jones (USA)	26,485.01	-0.37%	-2.60%	-1.13%	13.54%	7,392,652
▼ Standard & Poor's 500 (USA)	2,932.05	-0.73%	-3.10%	-1.38%	16.96%	25,544,539
▼ NASDAQ Composite (USA)	8,004.07	-1.32%	-3.92%	-1.30%	20.63%	12,536,829
▼ Stoxx EUROPE 600 (Europe)	3,781.15	-2.46%	-3.22%	-2.86%	11.99%	9,148,164
▼ DAX (Germany)	11,872.44	-3.11%	-4.41%	-5.22%	12.44%	991,843
▼ FTSE 100 (United Kingdom)	7,407.06	-2.34%	-1.88%	-2.01%	10.09%	1,629,374
▼ CAC 40 (France)	5,359.00	-3.57%	-4.48%	-3.91%	13.28%	1,482,267
▼ IBEX 35 (Spain)	8,897.60	-1.56%	-3.55%	-4.14%	4.19%	499,743
▼ MSCI AC Asia Pacific Index	157.73	-0.45%	-1.41%	-2.77%	7.52%	18,062,636
▼ HANG SENG (Hong Kong)	26,916.58	-2.35%	-5.21%	-6.45%	4.15%	2,523,043
▼ SHANGHAI SEC Comp. (China)	2,867.94	-1.41%	-2.60%	-4.76%	14.89%	4,571,431
▼ NIKKEI 225 (Japan)	21,087.16	-2.11%	-2.64%	-3.03%	5.36%	3,270,839
▲ BOVESPA (Brazil)	102,673.70	0.54%	-0.14%	2.06%	16.82%	786,109
▼ Merval (Argentina)	41,359.15	-0.13%	-1.49%	-1.04%	36.53%	29,943

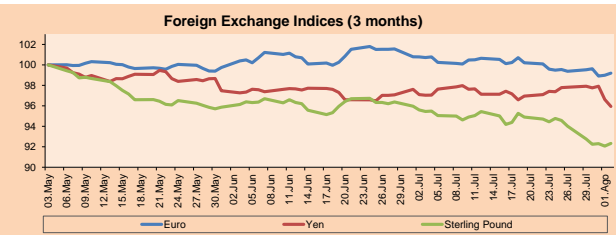
\*Legend: Variation 1D: 1 Day; 5D: 5 Days; 1M: 1 Month; YTD: Var.% 12/31/18 to date



Source: Bloomberg

Currency	Price	1 D*	5 D*	1 M*	YTD*
▲ Euro	1.1108	0.21%	-0.18%	-1.51%	-3.13%
▲ Yen	106.5900	-0.70%	-1.92%	-1.13%	-2.83%
▲ Sterling Pound	1.2162	0.28%	-1.79%	-3.28%	-4.64%
▲ Yuan	6.9405	0.61%	0.89%	0.86%	0.90%
▲ Hong Kong Dollar	7.8267	0.01%	0.09%	0.37%	-0.07%
▲ Brazilian Real	3.8897	1.28%	2.97%	1.57%	0.39%
▲ Argentine Peso	44.6516	0.66%	3.03%	6.22%	16.54%

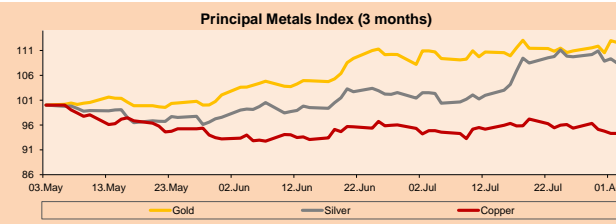
\*Legend: Variation 1D: 1 Day; 5D: 5 Days; 1M: 1 Month; YTD: Var.% 12/31/18 to date



Base: 03/05/19=100  
Source: Bloomberg

Commodities	Close	1 D*	5 D*	1 M*	YTD*
▼ Oro (US\$ Oz. T) (LME)	1,440.60	-0.32%	1.54%	1.54%	12.33%
▼ Plata (US\$ Oz. T) (LME)	16.20	-0.90%	-1.16%	5.83%	4.57%
▼ Cobres (US\$ TM) (LME)	5,875.00	0.00%	-1.11%	-0.57%	-1.24%
▼ Zinc (US\$ TM) (LME)	2,397.00	0.00%	-2.08%	-3.85%	-4.82%
▲ Petróleo WTI (US\$ Barril) (NYM)	55.19	2.30%	-1.80%	-3.92%	15.36%
▼ Estriño (US\$ TM) (LME)	17,320.00	0.00%	-1.90%	-5.37%	-11.27%
▼ Plomo (US\$ TM) (LME)	1,977.50	0.00%	-3.88%	6.05%	-1.47%
▼ Azúcar #11 (US\$ Libra) (NYB-ICE)	12.02	-0.83%	0.00%	-4.15%	-4.07%
▼ Cacao (US\$ TM) (NYB-ICE)	2,361.00	-0.67%	-3.44%	-4.30%	-4.34%
▲ Café Arábica (US\$ TM) (NYB-ICE)	98.15	0.93%	-1.60%	-13.64%	-11.26%

\*Lenda: Variación 1D: 1 Día; 5D: 5 Días; 1M: 1 Mes; YTD: Var.% 31/12/17 a la fecha



Base: 03/05/19=100  
Source: Bloomberg

## Equity

Alemania (Acciones del DAX Index)

Largest gains	Curr.	Price	▲%	Exchange	Largest losses	Curr.	Price	▼%	Exchange
VNA GY	EUR	45.35	0.33	Xetra	ADS GY	EUR	279.4	-5.72	Xetra
RWE GY	EUR	25.05	0.08	Xetra	TKA GY	EUR	10.99	-5.46	Xetra
LHA GY	EUR	14.515	-0.48	Xetra	1COV GY	EUR	39.84	-4.25	Xetra
MRK GY	EUR	93.28	-0.85	Xetra	BMW GY	EUR	64.65	-4.21	Xetra

Europe (Stocks from STOXX EUROPE 600)

Largest gains	Curr.	Price	▲%	Exchange	Largest losses	Curr.	Price	▼%	Exchange
IAG LN	GBP	448.2	8.39	Londres	AGN NA	EUR	4.029	-7.57	EN Amsterdam
GLB ID	EUR	11.63	7.39	EN Dublin	PIRC IM	EUR	5.016	-6.90	Borsa Italiana
ANDR AV	EUR	33.68	5.78	Vienna	FR FP	EUR	28.2	-6.79	EN Paris
VER AV	EUR	53	2.22	Vienna	CNH IM	EUR	8.718	-6.76	Borsa Italiana

## Global Overview:

### United States:

The American market closed the session down one day after the announcement on Twitter of President Donald Trump, in which he maintained that he would apply import tariffs of 10% to Chinese imports of \$ 300 billion that had not yet been taxed, as of September 1. On the other hand, the 10-year Treasury bond yield fell 2.9 basis points to 1.864%, its lowest level since November 7, 2016, while the 30-year bond rate decreased 3.4 basis points to 2.406%, its lowest level since October 2016. In economic data, the monthly US non-farm payroll report. U.I. He showed that the economy created 164,000 new jobs in July, however, unemployment remained unchanged at 3.7% against expectations of 3.6%. At the corporate level, quarterly reports from Walt Disney Co. next week, CBS and Viacom will likely highlight the growing competition in video streaming and could generate volatility in the so-called communication services sector, which has had superior performance since it was reviewed last year.

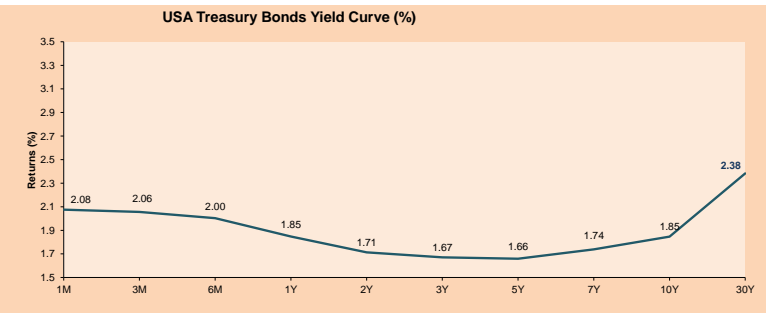
### Europe:

European stocks plummeted on Friday after US President Donald Trump said he would apply a 10% tariff on the remaining \$ 300 billion of Chinese imports next month. The Pan-European Stoxx 600 temporarily fell 2.4% at the end of the session, basic resources and car stocks fell 4.6% and 3.4% respectively, as all sectors were traded in red. Technological advances are also among the biggest losers, falling 3.6%. Investors rush into safe haven assets after Trump's tweet Thursday threw a commercial trade between the two largest economies in the world while talks on a resolution. The new British Prime Minister, Boris Johnson, suffered a blow on Friday morning after the pro-European liberal Democratic party won the parliamentary headquarters of Brecon and Radnorshire, in Wales, of the conservative rules. The loss reduces Johnson's majority of work in parliament to just one before an agreement with lawmakers about his plan to get Britain out of the European Union with or without an exit agreement on October 31.

### Asia:

The Asian market closed the session with its main indexes down after the president of the United States, Donald Trump, revealed plans to impose new tariffs on China, relieving the concerns of the trade war and reducing export and manufacturing companies. In this regard, Japanese government bond futures increased on Friday since January, as cash bond yields declined on the curve, and Japan's Nikkei 225 reached a minimum of six weeks. In line with what happened, the Chinese markets collapsed. Shares of Shanghai fell 1.7%, while the Hong Kong market fell more than 2%. Under this context, the cost of ensuring China's sovereign debt exposure rose to the highest level in more than a month. It should be noted that, Asian assets declined in July, overwhelmed by uncertainties over the US-China trade war and tempering expectations of aggressive monetary easing by major central banks this year.

ETFs	Curr.	Close	1D	5D	30 D	YTD	Exchange
SPDR S&P 500 ETF TRUST	USD	292.62	-0.75%	-3.11%	-2.07%	18.17%	NYSE Arca
ISHARES MSCI EMERGING MARKET	USD	40.55	-0.98%	-5.04%	-6.20%	4.61%	NYSE Arca
ISHARES IBOXX HIGH YLD CORP	USD	86.39	-0.15%	-0.47%	-0.67%	9.86%	NYSE Arca
FINANCIAL SELECT SECTOR SPDR	USD	27.60	-0.04%	-3.80%	-1.71%	17.05%	NYSE Arca
VANECK GOLD MINERS	USD	27.77	-0.29%	1.80%	8.27%	31.67%	NYSE Arca
ISHARES RUSSELL 2000 ETF	USD	152.58	-1.11%	-2.94%	-2.36%	14.66%	NYSE Arca
SPDR GOLD SHARES	USD	135.89	-0.38%	1.68%	1.69%	12.07%	NYSE Arca
ISHARES 20+ YEAR TREASURY BO	USD	136.51	0.92%	4.04%	1.92%	14.00%	NASDAQ GM
INVECO QQQ TRUST SERIES 1	USD	187.35	-1.47%	-4.07%	-2.14%	21.94%	NASDAQ GM
ISHARES NASDAQ BIOTECHNOLOGY	USD	105.07	-1.23%	-0.24%	-5.28%	9.04%	NASDAQ GM
ENERGY SELECT SECTOR SPDR	USD	60.40	-1.44%	-3.28%	-4.13%	7.11%	NYSE Arca
PROSHARES ULTRA VIX ST FUTUR	USD	30.60	1.50%	28.88%	13.33%	-62.56%	NYSE Arca
UNITED STATES OIL FUND LP	USD	11.48	-1.50%	-2.46%	-2.46%	18.84%	NYSE Arca
ISHARES MSCI BRAZIL ETF	USD	43.92	-0.48%	-3.35%	0.09%	16.44%	NYSE Arca
SPDR S&P OIL & GAS EXP & PR	USD	23.20	-1.15%	-4.17%	-11.38%	-12.04%	NYSE Arca
UTILITIES SELECT SECTOR SPDR	USD	60.15	-0.02%	0.28%	-0.92%	15.42%	NYSE Arca
ISHARES US REAL ESTATE ETF	USD	89.70	0.45%	1.02%	-0.51%	21.48%	NYSE Arca
SPDR S&P BIOTECH ETF	USD	84.02	-2.20%	-1.90%	-5.48%	17.10%	NYSE Arca
ISHARES IBOXX INVESTMENT GRA	USD	125.12	0.10%	0.91%	0.43%	13.23%	NYSE Arca
ISHARES JP MORGAN USD EMERGI	USD	113.68	-0.06%	-0.02%	0.14%	12.52%	NASDAQ GM
REAL ESTATE SELECT SECT SPDR	USD	37.79	0.77%	2.00%	-0.34%	23.57%	NYSE Arca
ISHARES CHINA LARGE-CAP ETF	USD	39.86	-0.77%	-5.61%	-7.58%	3.03%	NYSE Arca
CONSUMER STAPLES SPDR	USD	59.23	0.02%	-1.89%	-0.72%	18.17%	NYSE Arca
VANECK JR GOLD MINERS	USD	39.43	-0.08%	2.23%	12.92%	30.48%	NYSE Arca
SPDR BBG BARC HIGH YIELD BND	USD	107.89	-0.19%	-0.47%	-0.57%	10.65%	NYSE Arca
VANGUARD REAL ESTATE ETF	USD	89.32	0.48%	1.17%	-0.69%	21.80%	NYSE Arca



Source: Bloomberg

Capital Market Laboratory Coordinator: Economist Bruno Bellido Anicama

Collaboration: Juan Carlos Figueroa, Pablo Llanos y Marcía Rojas

e-mail: pulso@ulima.edu.pe  
facebook: www.facebook.com/pulso@ulima.edu.pe  
Phone number: 4376767 Anexo: 35340

# PULSO BURSÁTIL

## LIMA

Stocks

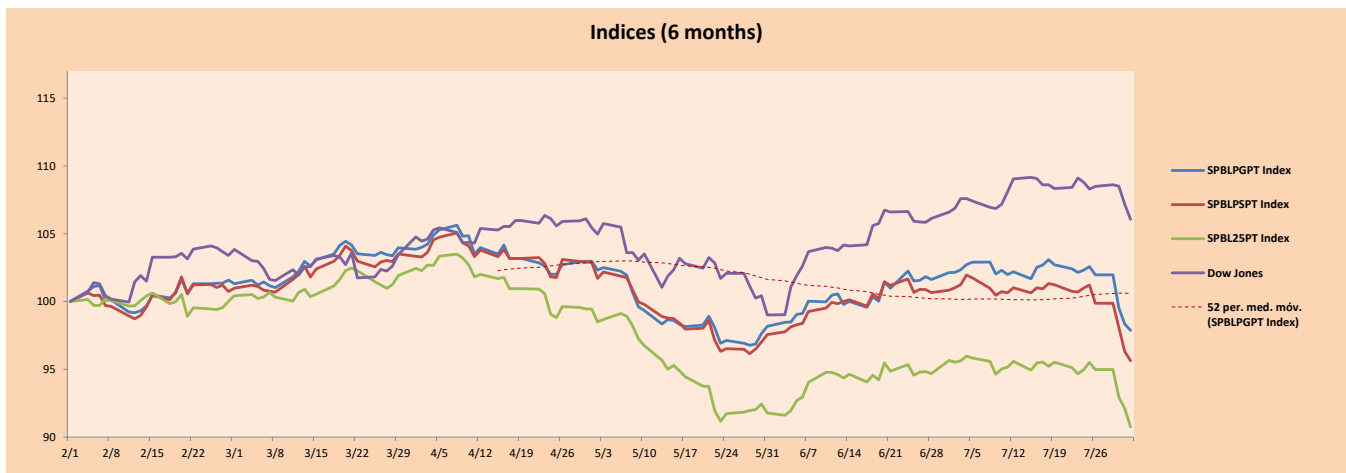
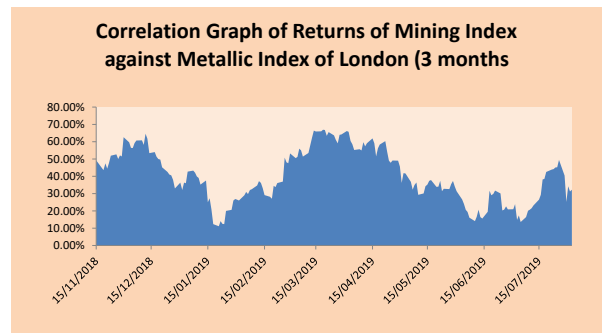
Ticker	Currency	Price	1D*	5D*	30D*	YTD*	Frequency	Volume (US\$)	Beta	Dividend Yield (%)	Price Earning	Market Cap. (M US\$)	Economic Sector*	Index Weight
▲ ALICORC1 PE**	S/.	10.15	1.40%	-6.88%	-1.84%	4.28%	100.00%	128,415	0.54	2.36	20.54	2,577.84	Industrial	3.53%
▲ ATACOCB1 PE**	S/.	0.19	0.00%	-5.00%	-5.94%	-40.99%	60.00%	11,324	0.78	0.00	5.15	53.49	Mining	1.02%
▼ BACKUSI1 PE**	S/.	23.30	-0.85%	1.30%	-0.80%	17.48%	70.00%	13,970	0.37	6.07	7.60	9,076.75	Industrial	0.82%
▼ BAP PE**	US\$	213.51	-1.40%	-7.15%	-8.83%	-1.05%	100.00%	561,121	1.12	2.83	-	17,029.87	Diverse	5.82%
▼ BVN PE**	US\$	15.81	-0.25%	-5.89%	-4.64%	-1.44%	90.00%	3,162	1.73	0.73	-	4,357.78	Mining	5.88%
- CASAGRC1 PE**	S/.	3.29	0.00%	0.09%	0.40%	-18.64%	100.00%	1,544	0.44	0.96	22.57	82.58	Agricultural	1.31%
▼ BBVAC1 PE**	S/.	3.23	-1.22%	-5.00%	-5.58%	-6.92%	100.00%	34,708	0.61	4.27	12.76	5,664.59	Finance	2.85%
- CORAREI1 PE**	S/.	0.70	0.00%	-5.41%	-5.41%	3.24%	100.00%	30,270	0.93	7.99	3.72	331.00	Industrial	1.72%
- CPACASC1 PE**	S/.	5.90	0.00%	-4.07%	1.90%	-8.53%	100.00%	123,046	0.44	6.39	32.78	750.40	Industrial	2.38%
▲ CVERDEC1 PE**	US\$	19.90	0.51%	-3.40%	-7.70%	-2.61%	85.00%	118,923	0.88	2.15	151.67	6,966.11	Mining	5.25%
- ENGEPEC1 PE**	S/.	2.45	0.00%	-5.04%	4.26%	29.63%	90.00%	44,144	0.65	4.34	10.91	2,072.51	Public Services	1.44%
▲ ENDISPC1**	S/.	6.21	0.32%	0.98%	12.91%	20.54%	90.00%	35,392	0.67	3.56	10.13	1,181.68	Public Services	0.98%
- FERREYC1 PE**	S/.	2.15	0.00%	-3.59%	-6.52%	-8.74%	100.00%	69,567	0.83	8.18	7.52	625.10	Diverse	4.90%
▼ GRAMONC1 PE**	S/.	1.86	-1.59%	0.54%	-4.12%	-6.53%	90.00%	2,217	0.83	0.00	-	404.30	Diverse	4.05%
▼ IFS PE**	US\$	40.22	-4.12%	-6.68%	-13.13%	-0.55%	95.00%	110,138	0.73	4.35	12.92	4,595.57	Diverse	7.22%
▼ INRETC1 PE**	US\$	37.30	-1.84%	-5.33%	-4.36%	32.98%	100.00%	93,250	1.00	0.91	39.65	3,834.71	Diverse	5.28%
▲ LUSURC1 PE**	S/.	14.32	-1.24%	0.14%	0.35%	34.79%	100.00%	13,461	0.36	5.52	12.00	2,077.94	Public Services	1.81%
- MINSUR1 PE**	S/.	1.55	0.00%	-8.28%	-7.74%	17.42%	80.00%	35,328	1.44	4.89	-	1,331.62	Mining	3.09%
- PML PE**	US\$	0.12	0.00%	4.35%	0.00%	-31.43%	30.00%	5,182	1.62	0.00	-	31.66	Mining	2.12%
- RELAPAC1 PE**	S/.	0.11	0.00%	-3.39%	-5.79%	-9.52%	100.00%	1,607	0.65	0.00	-	282.61	Industrial	2.12%
▼ SCCO PE**	US\$	33.20	-5.14%	-10.27%	-12.56%	12.50%	95.00%	122,243	1.52	6.16	17.66	25,665.56	Mining	2.14%
▲ SIDERC1 PE**	S/.	0.62	3.33%	-7.46%	-12.68%	28.36%	100.00%	48,932	1.42	16.47	6.72	226.86	Industrial	1.43%
▼ TV PE**	US\$	0.16	-5.26%	-11.96%	-23.58%	-45.45%	85.00%	44,323	1.79	0.00	-	131.89	Mining	2.93%
- UNACEMC1 PE**	S/.	2.35	0.00%	-2.08%	-2.08%	-8.70%	90.00%	17,064	0.53	2.21	12.58	1,273.20	Industrial	3.00%
▲ VOLCABC1 PE**	S/.	0.48	4.40%	-10.38%	-13.64%	-33.10%	100.00%	206,737	1.49	2.87	-	2,049.42	Mining	5.90%
▼ NEXAPEC1 PE**	S/.	3.20	-4.48%	-4.48%	-4.48%	-12.83%	80.00%	10,025	1.11	16.22	16.87	1,261.23	Mining	1.56%

Quantity of shares: 26  
Source: Bloomberg, Economática  
\* Bloomberg Industry Classification System  
\*\* PER is used in the stock market and original currency of the instrument  
\*Legend: Variation 1D: 1 Day; 5D: 5 Days, 1M: 1 Month; YTD: Var.% 12/31/18 to date

### Sectorial Indices

	Close	1D*	5D*	30D*	YTD*	Beta
▼ Mining Index	282.00	-1.31%	-6.27%	-7.03%	-0.99%	1.62
▲ Consumer Index	1,169.23	0.04%	-4.15%	-1.76%	16.27%	0.35
▼ Industrial Index	211.27	-0.51%	-2.72%	-3.08%	-6.89%	0.48
▼ Banking and Financial Index	1,184.25	-0.75%	-5.22%	-6.90%	-1.31%	1.10
▼ Construction Index	232.05	-0.78%	-2.34%	-1.32%	-5.62%	0.37
▼ Services Index	505.63	-0.29%	-1.09%	4.96%	27.17%	0.15
▲ Juniors Index	20.37	0.84%	3.35%	1.95%	-30.81%	0.05
▼ Electric Index	493.62	-0.29%	-1.09%	4.96%	27.17%	0.15

\*Legend: Variation 1D: 1 Day; 5D: 5 Days, 1M: 1 Month; YTD: Var.% 12/31/18 to date



Source: Bloomberg

Capital Market Laboratory Coordinator: Economist Bruno Bellido Anicama  
Collaboration: Juan Carlos Figueroa, Pablo Ulanos y Marcia Rojas.  
e-mail: pulsobursatil@ulima.edu.pe  
facebook: www.facebook.com/pulsobursatil.ul  
Phone number : 4376767 Annex: 35340

The content of this document is just for informational purposes. The information and opinions expressed should not be consider as recommendations for future decisions. Under any circumstances, the Capital Market Laboratory of University of Lima will be responsible for the use of the statements in this document.

# PULSO BURSÁTIL

## SOVEREIGN RATING

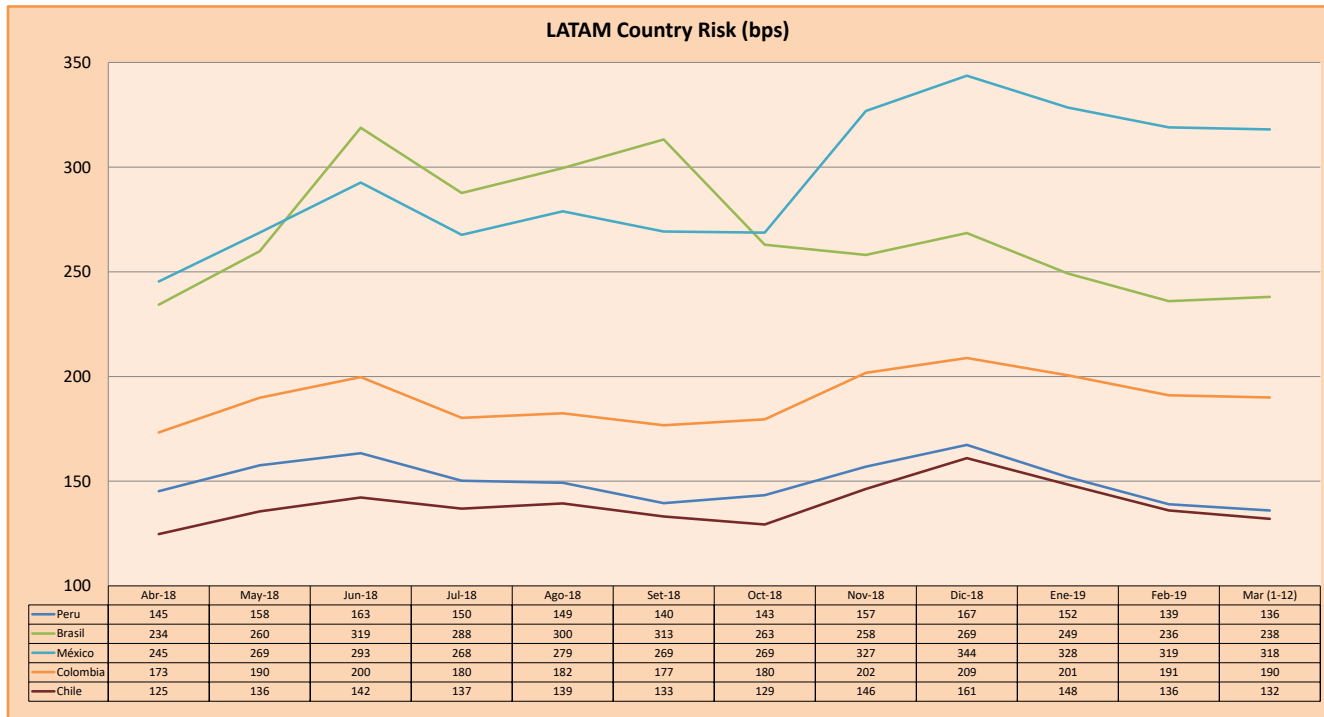
### RISK RATINGS

Moody's	S&P	Fitch	
Aaa	AAA	AAA	Prime
Aa1	AA+	AA+	High credit quality
Aa2	AA	AA	
Aa3	AA-	AA-	
A1	A+	A+	Medium-high grade, with low credit risk
A2	A	A	
A3	A-	A-	
Baa1	BBB+	BBB+	Moderate Credit Risk
Baa2	BBB	BBB	
Baa3	BBB-	BBB-	
Ba1	BB+	BB+	It has speculative elements and it is subject to substantial credit risk
Ba2	BB	BB	
Ba3	BB-	BB-	
B1	B+	B+	It is considered speculative and it has high credit risk
B2	B	B	
B3	B-	B-	
Caa1	CCC+		Bad credit conditions and it is subject to high credit risk
Caa2	CCC		
Caa3	CCC-	CCC	
Ca	C		Very close to default or in default
		DDD	
C	D	DD D	

Source: Bloomberg

Latin America Credit Rating			
Clasificadora de riesgo			
Country	Moody's	Fitch	S&P
Peru	A3	BBB+	BBB+
Mexico	A3	BBB	BBB+
Venezuela	C	WD	SD
Brazil	Ba2	BB-	BB-
Colombia	Baa2	BBB	BBB-
Chile	A1	A	A+
Argentina	B2	B	B
Panama	Baa1	BBB	BBB+

Source: Bloomberg



Source: BCRP

Capital Market Laboratory Coordinator: Economist Bruno Bellido Anicama  
 Support: Juan Carlos Figueroa, Pablo Llanos y Marcia Rojas.  
 e-mail: pulsobursatil@ulima.edu.pe  
 facebook: www.facebook.com/pulsobursatil.ul  
 Phone number : 4376767 Annex: 35340

The content of this document is just for informational purposes. The information and opinions expressed should not be consider as recommendations for future decisions. Under any circumstances, the Capital Market Laboratory of University of Lima will be responsible for the use of the statements in this document.