



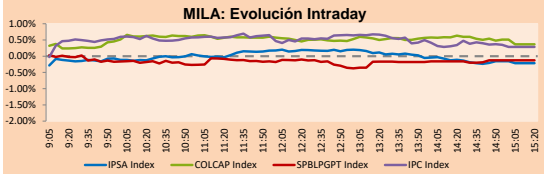
PULSO BURSÁTIL

Lima, August 20, 2019

MILA

Main Indices	Close	1 D	5 D	1 M	YTD	Market Cap. (US\$ bill)
▼ IPSA (Chile)	4,777.04	-0.22%	-1.05%	-5.46%	-6.44%	136.05
▼ IGPA (Chile)	24,265.86	-0.28%	-1.02%	-5.49%	-6.51%	175.29
▲ IGBC (Colombia)	12,570.76	0.35%	0.96%	-3.20%	12.90%	95.18
▲ COLCAP (Colombia)	1,548.46	0.37%	1.13%	-3.24%	16.78%	90.82
▼ S&P/BVL (Perú)*	19,088.02	-0.13%	-0.72%	-8.43%	-1.36%	97.49
▼ S&P/BVL SEL (Perú)	497.82	-0.37%	-0.63%	-9.46%	-2.84%	70.34
▼ S&P/BVL LIMA 25	24,041.55	-0.47%	-1.74%	-8.47%	-9.30%	78.98
▲ IPC (México)	39,700.05	0.36%	0.57%	-4.58%	-4.66%	251.65
▲ S&P MILA 40	589.65	-0.18%	-1.93%	-10.36%	-3.67%	239.23

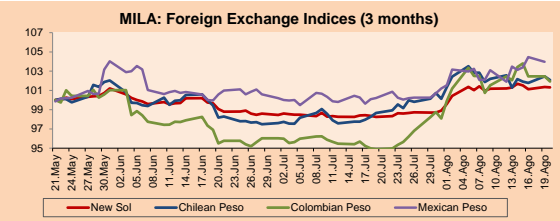
* Market Cap. Of the last price Legend: Variation 1D: 1 day, 5D: 5 days, 1M: 1 Month; YTD: Var%/12/31/18 to date



Source: Bloomberg

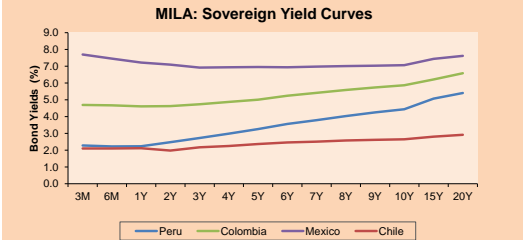
Currency	Price	1D*	5D*	30D*	YTD*
▼ New Sol (PEN)	3,383.00	-0.10%	-0.03%	3.04%	0.42%
▼ Chilean Peso (CLP)	710.64	-0.37%	0.78%	3.47%	2.46%
▼ Colombian Peso (COP)	3,408.98	-0.52%	-0.12%	7.42%	4.90%
▼ Mexican Peso (MXN)	19.77	-0.48%	2.02%	3.88%	0.60%

* Legend: Variation 1D: 1 day, 5D: 5 days, 1M: 1 Month; YTD: Var%/12/31/18 to date



Base: 21/05/19=100 Source: Bloomberg

Instrument	Currency	Price	Bid Yield (%)	Ask Yield (%)	Duration
PERU 4.125 08/25/2027	USD	114.624	2.15	2.11	6.81
PERU 7.35 07/21/25	USD	129.236	2.10	2.05	4.97
PERU 8.75 11/21/33	USD	169.153	2.82	2.82	9.60
PERU 6.55 03/14/37	USD	148.29	2.95	2.93	11.25
PERU 5.625 11/18/2050	USD	149.693	3.13	3.12	17.75
CHILE 2.25 10/30/22	USD	101.355	1.85	1.78	3.04
CHILE 3.875 08/05/20	USD	101.918	1.94	1.73	0.94
CHILE 3.625 10/30/2042	USD	113.436	2.84	2.82	16.21
COLOM 11.75 02/25/20	USD	104.893	2.21	1.84	0.48
COLOM 11.85 03/09/28	USD	161.35	3.52	3.45	5.97
COLOM 10.375 01/28/33	USD	157.963	4.63	4.48	8.61
COLOM 7.375 09/18/37	USD	143.331	4.01	3.97	11.18
COLOM 6.125 01/18/41	USD	130.558	4.01	3.97	13.18
MEX 4 10/02/23	USD	105.711	2.57	2.49	3.74
MEX5.55 01/45	USD	120.872	4.218	4.193	14.76



Source: Bloomberg

Equity	Exchange	Amt.	Price	▲ %
Largest gains				
POLO	Santia.	CLP	3245000.00	8.17
ELCONDOR	Colomb.	COP	1155.00	3.13
BVN	Lima	USD	15.00	2.74
AGUNSA	Santia.	CLP	180.00	1.63
Per Turnover				
SQM-B	Santia.	Amount (US\$)	25,992,429	
CHILE	Santia.	15,790,513		
CENCOSUD	Santia.	6,968,613		
PFBCOLOM	Colomb.	6,132,711		
ISA	Colomb.	6,085,527		

Equity	Exchange	Amt.	Price	▼ %
Largest losses				
BESALCO	Santia.	CLP	509.33	-5.68
CONCESH1	Lima	PEN	3.15	-5.41
SQM-A	Santia.	CLP	18712.00	-4.07
VOLCABC1	Lima	PEN	0.43	-3.37
Per Volume				
CHILE	Santia.	Volume	108,019,668	
BSANTANDER	Santia.	50,094,298		
COLBUN	Santia.	20,031,612		
VAPORES	Santia.	7,319,435		
ECOPETROL	Colomb.	6,668,753		

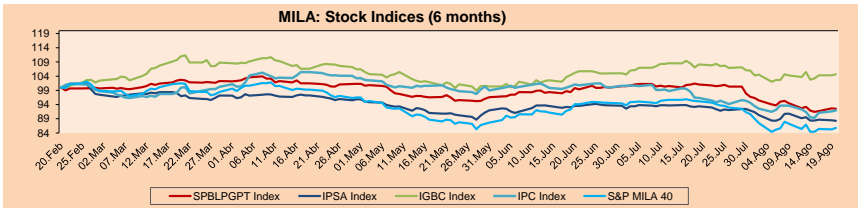
MILA

Peru: The General Index of the BVL ended today's session with a negative result of -0.13%. The index maintains a cumulative annual negative trend of -1.36% in local currency, while the adjusted yield in dollars amounts to -1.87%. Then, the S&P / BVL Peru SEL decreased by -2.84% while the S & P / BVL LIMA 25 decreased by -9.3%. The PEN spot reached S / 3.3820. Headline: Peru needs stimulation for lower risk of recession.

Chile: The IPSA index ended the day with a negative return of -0.21%. The sectors with the lowest results were the Industrial sector (-2.42%), First Needs products (-1.21%) and Materials (-1.04%). On the other hand, the values with the lowest results were Latam Airlines Group SA (-2.96%) and Salfacorp SA (-2.84%). Holder: Dollar in Chile falls with the currencies of the region with eyes on the Fed.

Colombia: The COLCAP index closed the session with +0.37%. The index sectors with the best results were, First Need products (+1.18%) and Finance (+0.52%). On the other hand, the values with the highest results were Almacenes Exito SA (+1.62%) and Grupo de Inversiones Suramerica (+1.49%).

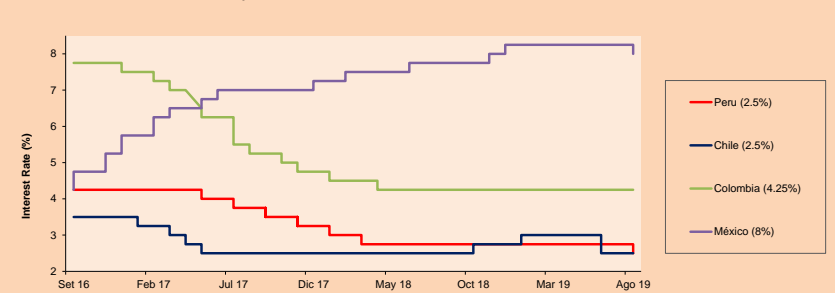
Mexico: The IPC index closed the session with a negative result of +0.36%. The sectors with the highest yields were Profits (+3.78%) and Materials (+2.47%). In addition, the actions with the best performance were Mexichem SAB de CV (+3.82%) and Infrastructure Energy Nov (+3.78%). Holder: Surplus first and lower debt, priority in the Economic Package.



Base: 21/02/19=100 Source: Bloomberg

ETFs	Curr.	Close	1D	5D	30 D	YTD	Exchange
▲ iShares MSCI All Peru Caped Index Fund	USD	33.35	0.12%	-1.42%	-11.77%	-4.31%	NYSE Arca
▼ iShares MSCI Chile Capped	USD	36.25	-0.17%	-2.11%	-9.15%	-10.78%	Cboe BZX
▲ Global X MSCI Colombia	USD	12.615	0.68%	-1.60%	-7.18%	15.18%	NYSE Arca
▲ iShares MSCI Mexico Capped	USD	39.07	0.64%	-1.36%	-7.98%	-3.20%	NYSE Arca
▲ iShares MSCI Emerging Markets	USD	39.78	0.20%	-0.28%	-7.19%	2.62%	NYSE Arca
▲ Vanguard FTSE Emerging Markets	USD	39.94	0.18%	-0.42%	-6.57%	5.76%	NYSE Arca
▲ iShares Core MSCI Emerging Markets	USD	47.82	0.21%	-0.19%	-7.13%	2.44%	NYSE Arca
▲ iShares JP Morgan Emerging Markets Bonds	USD	56.42	0.21%	0.00%	-4.42%	2.09%	Cboe BZX
▼ Morgan Stanley Emerging Markets Domestic	USD	6.61	-0.38%	-2.51%	-6.24%	13.97%	New York

MILA: Policy Rate



Source: Bloomberg

Capital Market Laboratory Coodinador: Economist Bruno Bellido Anicama
Collaboration: Juan Carlos Figueroa, Alonso Hernández, Manuel Muñoz Najar y Abril Retamozo.
e-mail: pulsobursatil@ulima.edu.pe
facebook: www.facebook.com/pulsobursatil.ul
Phone number : 4376767 Annex: 35340



PULSO BURSÁTIL

WORLD

Main Indices	Close	1 D*	5 D*	1 M*	YTD*	Market Cap. (US\$ Mill)
▼ Dow Jones (USA)	25,962.44	-0.66%	-1.21%	-4.39%	11.30%	7,301,477
▼ Standard & Poor's 500 (USA)	2,900.51	-0.79%	-0.88%	-2.56%	15.70%	25,256,904
▼ NASDAQ Composite (USA)	7,948.56	-0.68%	-0.85%	-2.43%	19.79%	12,389,808
▼ Stoxx EUROPE 600 (Europe)	371.30	-0.68%	-0.30%	-4.12%	9.97%	8,973,908
▼ DAX (Germany)	11,651.18	-0.55%	-0.84%	-4.97%	10.34%	972,117
▼ FTSE 100 (United Kingdom)	7,125.00	-0.90%	-1.74%	-5.11%	5.90%	1,563,944
▼ CAC 40 (France)	5,344.64	-0.50%	-0.34%	-3.74%	12.98%	1,478,417
▼ IBEX 35 (Spain)	8,618.30	-1.32%	-0.88%	-6.02%	0.92%	484,410
▲ MSCI AC Asia Pacific Index	152.98	0.96%	1.52%	-5.46%	3.71%	17,456,744
▲ HANG SENG (Hong Kong)	26,231.54	-0.23%	3.76%	-8.81%	1.49%	2,409,443
▲ SHANGHAI SEC Comp. (China)	2,880.00	-0.11%	2.98%	-1.51%	15.48%	4,521,607
▲ NIKKEI 225 (Japan)	20,677.22	0.55%	1.08%	-3.68%	3.31%	3,208,107
▲ BOVESPA (Brazil)	99,222.30	-0.25%	-3.95%	-4.09%	12.90%	728,444
▲ Merval (Argentina)	27,230.62	-10.45%	-1.09%	-32.20%	-10.11%	18,379

*Legend: Variation 1D: 1 Day; 5D: 5 Days; 1M: 1 Month; YTD: Var.% 12/31/18 to date

Equity

Alemania (Acciones del DAX Index)

Largest gains	Curr.	Price	▲%	Exchange	Largest losses	Curr.	Price	▼%	Exchange
FRE GY	EUR	43.515	0.12	Xetra	EOAN GY	EUR	8.21	-2.27	Xetra
WDI GY	EUR	141	0.00	Xetra	HEI GY	EUR	60.14	-1.64	Xetra
LIN GY	EUR	170.25	0.00	Xetra	LHA GY	EUR	13.065	-1.62	Xetra
SIE GY	EUR	87.22	-0.01	Xetra	DAI GY	EUR	41.335	-1.51	Xetra

Europe (Stocks from STOXX EUROPE 600)

Largest gains	Curr.	Price	▲%	Exchange	Largest losses	Curr.	Price	▼%	Exchange
CO FP	EUR	39.11	9.22	EN Paris	PROX BB	EUR	25.86	-6.17	EN Brussels
SBRV LN	GBP	193.9	2.95	Londres	GVC GY	EUR	19.23	-6.01	Xetra
AMP IM	EUR	23.54	2.88	Borsa Italiana	AIBG ID	EUR	2.308	-5.56	EN Dublin
ROCK DC	DKK	1560	2.30	Copenhagen	RMG LN	GBP	189.65	-5.08	Londres

Global Overview:

United States:

The US market ended the day with negative results, breaking the positive run that had remained for three days. These results due to the possible recession of the economy and the meeting of the Fed on Wednesday. The main economic indexes ended the day with negative results, S&P 500 closed the day at (-0.79%), Dow Jones Industrial (-0.66%) and NASDAQ at (-0.68%). The sectors that had the greatest losses in the US market were: finance with (-1.40%), health (-0.86%) and information technology with (-0.53%). Being the worst performers, American International Group I with (-2.52%) in the finance sector, Nektar Therapeutics (-4.25%) in health and in information technology, Alliance Data Systems Corp (-4.24%). On the other hand, despite the quarterly results presented by the company Home Depot Inc, HD, + 4.40% that exceeded expectations, the company warned that the deflation of the price of wood and the impact of possible tariffs, could affect sales of the year. Meanwhile, President Donald Trump criticized the Federal Reserve, FED, "If the FED did its job, we would have tremendous growth." The president also said he is considering tax cuts, including payroll tax cuts. "Payroll taxes is something I've been thinking about. Many people would like to see that".

Europe:

The European markets ended today downwards, affected by the resignation of the Prime Minister of Italy and the concern about the growing political crisis in that country. The Pan-European Stoxx 600 fell by -0.7% and the FTSE MIB of Italy fell by -1.0%. This occurs due to Giuseppe Conte's resignation statement after Lega party leader and deputy prime minister Matteo Salvini separated his coalition with the anti-establishment Five-Star Movement (M5S). Thus, Conte, in his speech, reproached Salvini for pushing for a no-confidence vote. Besides, Olli Rehn, governor of the Finnish Central Bank, said the European Central Bank (ECB) was prepared to act if the medium-term inflation outlook still failed to reach the goal of less than or close to 2%. In addition, Boris Johnson, Prime Minister of the United Kingdom, will meet in Thursday with French President Emmanuel Macron to find a solution to the deadlock of Brexit. In corporate news, Ubi Banca and Banco BMP closed with results of -2.0%. On the other hand, Pandora's shares grew 10%, after confirming the orientation for the second half.

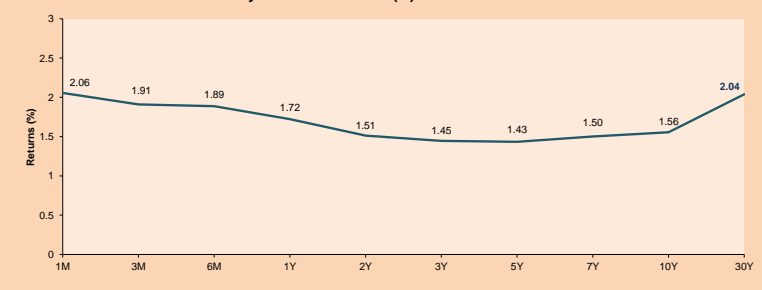
Asia:

The main Asian markets closed the day with mixed results. In China, the CSI300 "Blue Chips" index corrected down -0.1%, after having had a three-day rally, investors expect the index to return to positive ground in the following days because the Chinese government is implementing reforms to boost the economy, among which the change in the reference rate of loans from the Central Bank's 1-year rate to a loan premium rate stands out, which is lower and therefore should boost credits in Hong Kong, the Hang Seng index fell -0.2%, due to the fall in the contributions of Country Garden Holdings Co (-1.80%) and PICC Property (-1.19%) due to protests in the city. In Japan, the market closed higher, due to positive news about the global economy, the Topix index rose + 0.8% driven by the good performance of the shares of Taiyo Yuden (+1.6%) and Foster Electric (+1.4%), which are suppliers of Apple Inc, which has benefited from lower commercial tensions. Finally, the Australian S & P / ASX 200 index rose 1.2% thanks to the good performance of the energy sector due to higher oil prices.

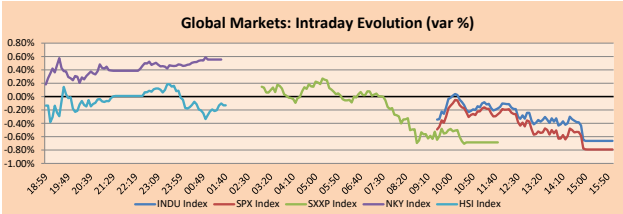
ETFs

ETF	Curr.	Close	1D	5D	30 D	YTD	Exchange
SPDR S&P 500 ETF TRUST	USD	290.09	-0.77%	-0.64%	-2.38%	17.15%	NYSE Arca
ISHARES MSCI EMERGING MARKET	USD	39.78	0.20%	-0.28%	-7.19%	2.62%	NYSE Arca
ISHARES IBOXX HIGH YLD CORP	USD	86.42	0.08%	0.10%	0.23%	9.90%	NYSE Arca
FINANCIAL SELECT SECTOR SPDR	USD	26.48	-1.34%	-1.85%	-5.23%	12.30%	NYSE Arca
VANECK GOLD MINERS	USD	28.85	3.29%	1.41%	3.11%	36.79%	NYSE Arca
ISHARES RUSSELL 2000 ETF	USD	149.15	-0.65%	-0.75%	-3.04%	12.08%	NYSE Arca
SPDR GOLD SHARES	USD	142.21	0.78%	0.30%	5.76%	17.29%	NYSE Arca
ISHARES 20+ YEAR TREASURY BO	USD	145.53	1.03%	2.14%	10.73%	21.54%	NASDAQ GM
INVESCO QQQ TRUST SERIES 1	USD	186.97	-0.77%	-0.75%	-2.12%	21.69%	NASDAQ GM
ISHARES NASDAQ BIOTECHNOLOGY	USD	105.08	-1.02%	-0.28%	0.19%	9.06%	NASDAQ GM
ENERGY SELECT SECTOR SPDR	USD	57.79	-0.84%	-1.85%	-7.92%	2.48%	NYSE Arca
PROSHARES ULTRA VIX ST FUTUR	USD	31.50	3.65%	1.22%	17.78%	61.48%	NYSE Arca
UNITED STATES OIL FUND LP	USD	11.63	-0.26%	-2.02%	-0.34%	20.39%	NYSE Arca
ISHARES MSCI BRAZIL ETF	USD	40.89	0.34%	-5.87%	-11.15%	8.41%	NYSE Arca
SPDR S&P Oil & GAS EXP & PR	USD	22.14	-0.81%	0.23%	-10.58%	-16.05%	NYSE Arca
UTILITIES SELECT SECTOR SPDR	USD	61.67	-0.16%	1.45%	2.15%	18.34%	NYSE Arca
ISHARES US REAL ESTATE ETF	USD	91.50	-0.75%	0.33%	4.07%	23.91%	NYSE Arca
SPDR S&P BIOTECH ETF	USD	82.47	-1.10%	-1.36%	-3.67%	14.94%	NYSE Arca
ISHARES IBOXX INVESTMENT GRA	USD	128.17	0.58%	1.22%	3.85%	16.00%	NYSE Arca
ISHARES JP MORGAN USD EMERGI	USD	113.59	0.03%	0.46%	0.59%	12.43%	NASDAQ GM
REAL ESTATE SELECT SECT SPDR	USD	38.72	-0.74%	0.68%	5.22%	26.61%	NYSE Arca
ISHARES CHINA LARGE-CAP ETF	USD	39.01	-0.36%	0.36%	-8.15%	0.83%	NYSE Arca
CONSUMER STAPLES SPDR	USD	60.15	-1.09%	0.94%	0.35%	20.01%	NYSE Arca
VANECK JR GOLD MINERS	USD	40.06	3.81%	-0.02%	1.44%	32.56%	NYSE Arca
SPDR BBG BARC HIGH YIELD BND	USD	107.89	0.05%	0.19%	0.26%	10.65%	NYSE Arca
VANGUARD REAL ESTATE ETF	USD	91.19	-0.71%	0.50%	4.30%	24.35%	NYSE Arca
GRAYSCALE BITCOIN TRUST BTC	USD	13.50	-1.75%	-0.15%	2.04%	240.48%	OTC US

USA Treasury Bonds Yield Curve (%)



Source: Bloomberg

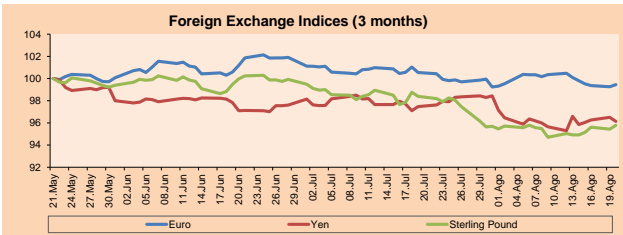


Source: Bloomberg

Currency

Currency	Price	1 D*	5 D*	1 M*	YTD*
▲ Euro	1.1100	0.20%	-0.64%	-1.08%	-3.20%
▲ Yen	106.2300	-0.38%	-0.48%	-1.37%	-3.15%
▲ Sterling Pound	1.2170	0.36%	0.91%	-2.66%	-4.58%
▲ Yuan	7.0605	0.14%	0.24%	2.59%	2.65%
▼ Hong Kong Dollar	7.8426	-0.03%	-0.04%	0.44%	0.14%
▼ Brazilian Real	4.0555	-0.47%	2.23%	8.17%	4.67%
▼ Argentine Peso	54.7259	-0.14%	-1.68%	29.99%	45.29%

*Legend: Variation 1D: 1 Day; 5D: 5 Days; 1M: 1 Month; YTD: Var.% 12/31/18 to date

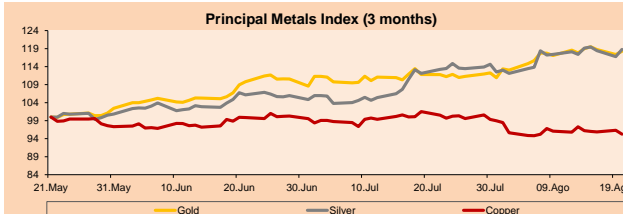


Base: 21/05/19=100
Source: Bloomberg

Commodities

Commodity	Close	1 D*	5 D*	1 M*	YTD*
▲ Oro (US\$ Oz. T) (LME)	1,507.18	0.75%	0.37%	5.74%	17.52%
▲ Plata (US\$ Oz. T) (LME)	17.16	1.71%	1.17%	5.91%	10.76%
▲ Cobre (US\$ TM) (LME)	5,662.75	-1.09%	-2.10%	-6.15%	-4.48%
▲ Zinc (US\$ TM) (LME)	2,216.50	-1.51%	-1.81%	-8.16%	-11.99%
▼ Petróleo WTI (US\$ Barril) (NYM)	56.13	-0.02%	-1.70%	0.56%	16.84%
- Estafío (US\$ TM) (LME)	16,480.00	0.00%	-3.91%	-7.29%	-15.57%
▲ Plomo (US\$ TM) (LME)	2,057.50	0.30%	-0.93%	0.65%	2.52%
▲ Acaúcar #11 (US\$ Libra) (NYB-ICE)	11.44	-0.26%	-2.39%	-1.29%	-8.70%
▲ Cacao (US\$ TM) (NYB-ICE)	2,174.00	-0.78%	-1.45%	-13.01%	-11.91%
▲ Café Arábica (US\$ TM) (NYB-ICE)	95.25	-0.47%	-4.46%	-14.30%	-16.70%

*Legend: Variación 1D: 1 Día; 5D: 5 Días; 1M: 1 Mes; YTD: Var.% 31/12/17 a la fecha



Base: 21/05/19=100
Source: Bloomberg

Capital Market Laboratory Coordinator: Economist Bruno Bellido Anicama
Collaboration: Juan Carlos Figueroa, Alonso Hernández, Manuel Muñoz Najar y Abril Retamozo
e-mail: pulsoburstil@ulima.edu.pe
facebook: www.facebook.com/pulsoburstil
Phone number: 4376767 Anexas: 35340



PULSO BURSÁTIL

LIMA

Stocks

Ticker	Currency	Price	1D*	5D*	30D*	YTD*	Frequency	Volume (US\$)	Beta	Dividend Yield (%)	Price Earning	Market Cap. (M US\$)	Economic Sector*	Index Weight
▲ ALICORC1 PE**	S/.	9.70	0.52%	0.52%	-9.77%	-0.34%	100.00%	373,483	0.59	2.47	19.63	2,443.37	Industrial	3.53%
▲ ATACOB1 PE**	S/.	0.19	0.00%	-2.56%	-7.32%	-40.99%	52.63%	1,747	1.26	0.00	5.11	53.06	Mining	1.02%
- BACKUS1 PE**	S/.	23.80	0.00%	1.28%	3.48%	20.00%	68.42%	668	0.35	0.00	7.76	8,996.90	Industrial	0.82%
▼ BAP PE**	US\$	205.45	-0.65%	-1.27%	-11.00%	-4.78%	100.00%	213,539	1.11	2.94	-	16,386.99	Diverse	5.82%
▲ BVN PE**	US\$	15.00	2.74%	3.09%	-12.69%	-6.49%	100.00%	41,332	1.61	0.77	-	4,134.52	Mining	5.88%
▼ CASAGRC1 PE**	S/.	3.23	-0.31%	-0.62%	-2.92%	-20.13%	100.00%	1,436	0.43	0.98	22.16	80.42	Agricultural	1.31%
▼ BBVAC1 PE**	S/.	3.22	-0.92%	-1.23%	-5.57%	-7.20%	100.00%	21,973	0.62	4.28	12.72	5,601.65	Finance	2.85%
▼ CORARE11 PE**	S/.	0.66	-1.49%	-7.69%	-7.69%	-0.60%	100.00%	3,004	0.88	9.29	3.51	317.62	Industrial	1.72%
▼ CPACASC1 PE**	S/.	5.70	-0.87%	-1.72%	-3.39%	-11.63%	100.00%	4,852	0.59	6.61	31.67	719.31	Industrial	2.38%
▼ CVERDEC1 PE**	US\$	18.00	-1.37%	-5.21%	-13.25%	-11.91%	89.47%	13,860	0.77	2.38	137.40	6,301.01	Mining	5.25%
- ENGEPEC1 PE**	S/.	2.40	0.00%	-1.36%	-6.69%	28.34%	100.00%	5,321	0.69	4.26	13.16	2,013.89	Public Services	1.44%
▲ ENDISPC1**	S/.	6.18	0.49%	0.06%	0.88%	20.42%	68.42%	4,682	0.64	3.67	10.08	1,166.52	Public Services	0.98%
- FERREYC1 PE**	S/.	2.08	0.00%	-3.26%	-3.70%	-11.71%	100.00%	380,224	1.00	8.45	7.27	599.89	Diverse	4.90%
▲ GRAMONC1 PE**	S/.	1.80	1.12%	0.00%	-5.26%	-9.55%	94.74%	155,613	0.98	0.00	-	388.11	Diverse	4.05%
▼ IFS PE**	US\$	39.84	-1.63%	2.15%	-14.69%	-1.49%	94.74%	10,047	0.90	4.39	11.46	4,599.44	Diverse	7.22%
▼ INRETC1 PE**	US\$	38.00	-1.30%	4.54%	-5.71%	35.47%	94.74%	844,842	1.00	0.90	31.88	3,906.68	Diverse	5.28%
▲ LUSURC1 PE**	S/.	15.15	1.00%	5.80%	7.07%	42.60%	84.21%	1,388,989	0.51	5.21	12.13	2,180.70	Public Services	1.81%
- MINSUR1 PE**	S/.	1.53	0.00%	-1.29%	-7.27%	15.91%	57.89%	14,230	1.42	0.00	2.82	1,303.87	Mining	3.09%
- PML PE**	US\$	0.09	0.00%	-10.00%	-23.08%	-48.57%	31.58%	2,259	1.40	0.00	-	23.75	Mining	2.12%
▼ RELAPAC1 PE**	S/.	0.10	-0.95%	-5.45%	-8.77%	-17.46%	100.00%	153,290	0.61	0.00	-	255.75	Industrial	2.12%
▼ SCCO PE**	US\$	30.09	-0.53%	-6.17%	-19.39%	3.26%	100.00%	9,831	1.48	6.79	16.01	23,261.34	Mining	2.14%
- SIDERC1 PE**	S/.	0.56	0.00%	-6.67%	-16.42%	15.94%	94.74%	2,814	1.47	18.23	6.09	203.26	Industrial	1.43%
- TV PE**	US\$	0.14	0.00%	-11.32%	-34.11%	-52.53%	89.47%	9,938	1.71	0.00	-	114.79	Mining	2.93%
▼ UNACEMC1 PE**	S/.	2.34	-0.43%	5.07%	-1.93%	-8.56%	84.21%	6,917	0.52	2.22	11.25	1,257.59	Industrial	3.00%
▼ VOLCABC1 PE**	S/.	0.43	-3.37%	-12.24%	-18.87%	-39.44%	100.00%	57,841	1.31	3.17	-	518.16	Mining	5.90%
- NEXAPEC1 PE**	S/.	3.10	0.00%	0.32%	-6.06%	-15.55%	73.68%	1,530	1.09	16.74	16.10	1,212.24	Mining	1.56%

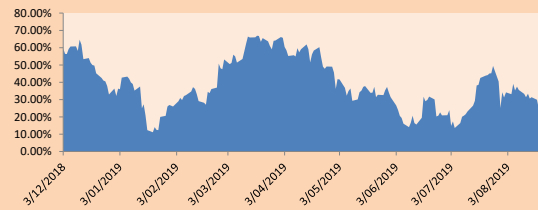
Quantity of shares: 26
 Source: Bloomberg, Economática
 * Bloomberg Industry Classification System
 ** PER is used in the stock market and original currency of the instrument
 *Legend: Variation 1D: 1 Day; 5D: 5 Days, 1M: 1 Month; YTD: Var.% 12/31/18 to date

Sectorial Indices

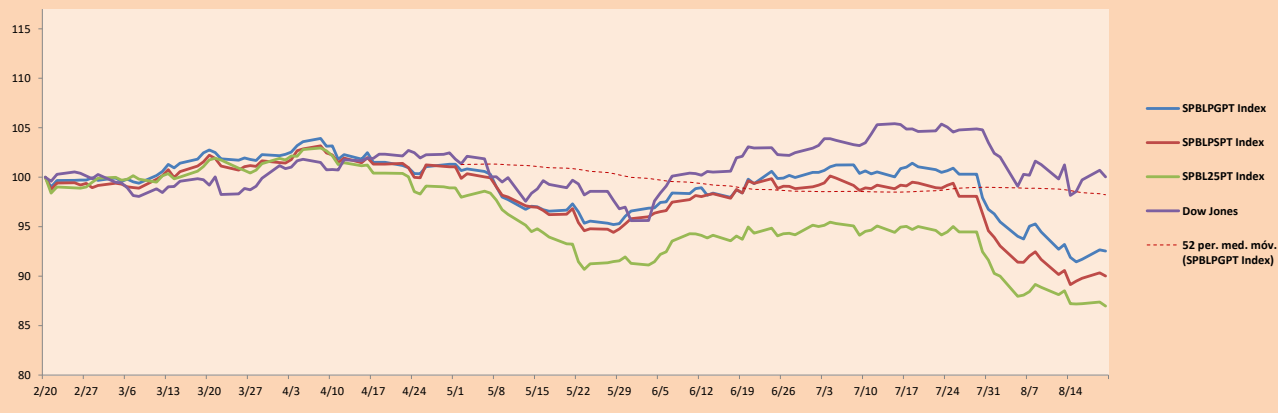
	Close	1D*	5D*	30D*	YTD*	Beta
▲ Mining Index	265.13	0.71%	-2.13%	-13.21%	-6.92%	1.57
▲ Consumer Index	1,163.72	-0.41%	2.21%	-4.81%	15.72%	0.35
▼ Industrial Index	205.77	-0.09%	-0.77%	-3.79%	-9.31%	0.54
▼ Banking and Financial Index	1,152.64	-0.82%	-1.17%	-8.08%	-3.94%	1.11
▼ Construction Index	226.88	-0.11%	0.56%	-3.82%	-7.73%	0.48
▲ Services Index	511.64	0.70%	1.62%	0.18%	28.68%	0.19
▼ Juniors Index	18.32	-0.11%	-5.13%	-7.33%	-37.77%	0.18
▲ Electric Index	499.49	0.70%	1.62%	0.18%	28.68%	0.19

*Legend: Variation 1D: 1 Day; 5D: 5 Days, 1M: 1 Month; YTD: Var.% 12/31/18 to date

Correlation Graph of Returns of Mining Index against Metallic Index of London (3 months)



Indices (6 months)



Source: Bloomberg

Capital Market Laboratory Coordinator: Economist Bruno Bellido Anicama
 Collaboration: Juan Carlos Figueroa, Alonso Hernández, Manuel Muñoz Najar y Abril Retamozo.
 e-mail: pulsobursatil@ulima.edu.pe
 facebook: www.facebook.com/pulsobursatil.ul
 Phone number : 4376767 Annex: 35340

The content of this document is just for informational purposes. The information and opinions expressed should not be consider as recommendations for future decisions. Under any circumstances, the Capital Market Laboratory of University of Lima will be responsible for the use of the statements in this document.

PULSO BURSÁTIL

SOVEREIGN RATING

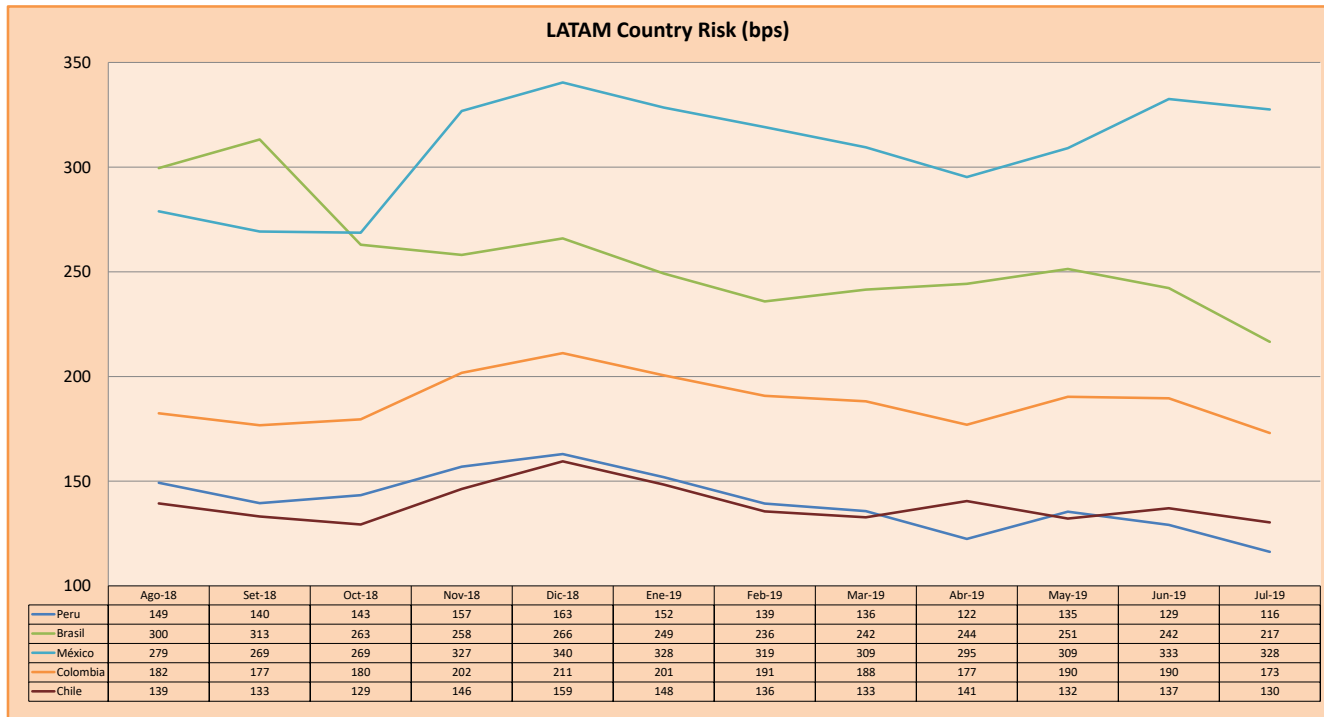
RISK RATINGS

Moody's	S&P	Fitch	
Aaa	AAA	AAA	Prime
Aa1	AA+	AA+	High credit quality
Aa2	AA	AA	
Aa3	AA-	AA-	
A1	A+	A+	Medium-high grade, with low credit risk
A2	A	A	
A3	A-	A-	
Baa1	BBB+	BBB+	Moderate Credit Risk
Baa2	BBB	BBB	
Baa3	BBB-	BBB-	
Ba1	BB+	BB+	It has speculative elements and it is subject to substantial credit risk
Ba2	BB	BB	
Ba3	BB-	BB-	
B1	B+	B+	It is considered speculative and it has high credit risk
B2	B	B	
B3	B-	B-	
Caa1	CCC+		Bad credit conditions and it is subject to high credit risk
Caa2	CCC		
Caa3	CCC-	CCC	
Ca	C		Very close to default or in default
		DDD	
C	D	DD D	

Source: Bloomberg

Latin America Credit Rating			
Clasificadora de riesgo			
Country	Moody's	Fitch	S&P
Peru	A3	BBB+	BBB+
Mexico	A3	BBB	BBB+
Venezuela	C	WD	SD
Brazil	Ba2	BB-	BB-
Colombia	Baa2	BBB	BBB-
Chile	A1	A	A+
Argentina	B2	CCC	B-
Panama	Baa1	BBB	BBB+

Source: Bloomberg



Source: BCRP

Capital Market Laboratory Coordinator: Economist Bruno Bellido Anicama
Support: Juan Carlos Figueroa, Alonso Hernández, Manuel Muñoz Najar y Abril Retamozo.
e-mail: pulsobursatil@ulima.edu.pe
facebook: www.facebook.com/pulsobursatil.ul
Phone number : 4376767 Annex: 35340

The content of this document is just for informational purposes. The information and opinions expressed should not be considered as recommendations for future decisions. Under any circumstances, the Capital Market Laboratory of University of Lima will be responsible for the use of the statements in this document.