



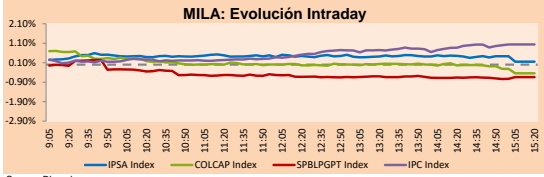
PULSO BURSÁTIL

Lima, August 21, 2019

MILA

Main Indices	Close	1 D	5 D	1 M	YTD	Market Cap. (US\$ bill)
▲ IPSA (Chile)	4,784.49	0.16%	-1.26%	-4.92%	-6.29%	135.83
▲ IGPA (Chile)	24,287.04	0.09%	-1.25%	-5.02%	-6.41%	174.72
▼ IGBC (Colombia)	12,501.10	-0.55%	-1.28%	-3.44%	12.18%	96.18
▼ COLCAP (Colombia)	1,541.56	-0.45%	-0.84%	-3.68%	16.26%	91.78
▼ S&P/BVL (Perú)*	18,965.52	-0.64%	0.05%	-8.75%	-1.99%	97.20
▼ S&P/BVL SEL (Perú)	494.99	-0.57%	0.40%	-9.98%	-3.39%	70.12
▼ S&P/BVL LIMA 25	23,940.77	-0.42%	-0.70%	-8.85%	-9.69%	78.77
▲ IPC (México)	40,076.04	0.95%	3.69%	-2.75%	-3.76%	253.67
▼ S&P MILA 40	588.77	-0.15%	1.42%	-9.98%	-3.26%	239.85

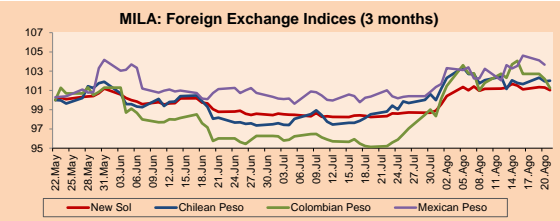
* Market Cap. Of the last price *Legend: Variation 1D: 1 day; 5D: 5 days; 1M: 1 Month; YTD: Var%/12/31/18 to date



Source: Bloomberg

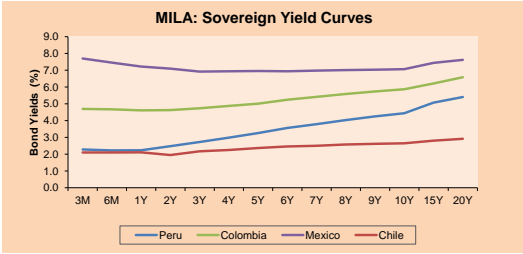
Currency	Price	1D*	5D*	30 D*	YTD*
▼ New Sol (PEN)	3,3765	-0.19%	-0.62%	2.78%	0.22%
▲ Chilean Peso (CLP)	711.09	0.06%	-0.04%	3.24%	2.52%
▲ Colombian Peso (COP)	3,377.60	-0.92%	-2.36%	6.35%	3.93%
▼ Mexican Peso (MXN)	19.68	-0.42%	0.05%	3.31%	0.18%

*Legend: Variation 1D: 1 day; 5D: 5 days; 1M: 1 Month; YTD: Var%/12/31/18 to date



Base: 22/05/19=100
Source: Bloomberg

Instrument	Currency	Price	Bid Yield (%)	Ask Yield (%)	Duration
PERU 4.125 08/25/2027	USD	114.575	2.15	2.12	6.80
PERU 7.35 07/21/25	USD	129.179	2.10	2.05	4.97
PERU 8.75 11/21/33	USD	169.198	2.82	2.81	9.59
PERU 6.55 03/14/37	USD	149.208	2.96	2.93	11.26
PERU 5.625 11/18/2050	USD	149.575	3.13	3.12	17.76
CHILE 2.25 10/30/22	USD	101.216	1.88	1.84	3.04
CHILE 3.875 08/05/20	USD	101.911	1.97	1.71	0.94
CHILE 3.625 10/30/2042	USD	113.449	2.84	2.82	16.22
COLOM 11.75 02/25/20	USD	104.87	2.24	1.80	0.48
COLOM 11.85 03/09/28	USD	161.404	3.52	3.44	5.96
COLOM 10.375 01/28/33	USD	157.963	4.63	4.48	8.59
COLOM 7.375 09/18/37	USD	143.425	4.00	3.96	11.18
COLOM 6.125 01/18/41	USD	130.769	3.99	3.96	13.18
MEX 4 10/02/23	USD	105.64	2.59	2.50	3.74
MEX5.55 01/45	USD	120.613	4.235	4.204	14.77



Source: Bloomberg

Equity	Exchange	Amt.	Price	▲ %
Largest gains				
SIEMEL	Santia.	CLP	359.00	8.79
TV	Lima	USD	0.15	2.84
SNJUANC1	Lima	PEN	35.30	2.29
VOLCABC1	Lima	PEN	0.44	2.09

Per Turnover	Exchange	Amount (US\$)
CHILE	Santia.	11,505,755
SQM-B	Santia.	10,429,747
FALABELLA	Santia.	9,712,621
ECOPETROL	Colomb.	9,237,313
CCU	Santia.	8,593,774

Largest losses	Exchange	Amt.	Price	▼ %
ORO BLANCO	Santia.	CLP	3.00	-6.25
BLUMAR	Santia.	CLP	279.97	-3.46
PROMIGAS	Colomb.	COP	6910.00	-2.95
CVERDEC1	Lima	USD	17.50	-2.78

Per Volume	Exchange	Volume
CHILE	Santia.	78,721,928
BSANTANDER	Santia.	48,869,891
VAPORES	Santia.	28,163,820
ORO BLANCO	Santia.	24,012,241
COLBUN	Santia.	22,143,049

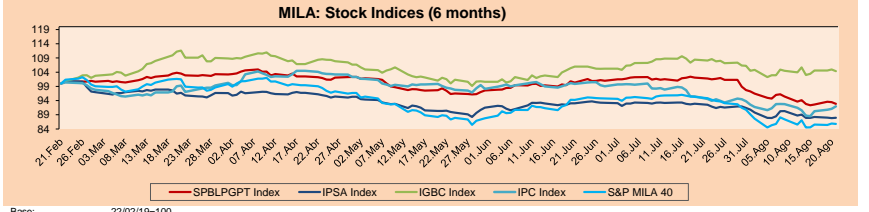
LATIN AMERICA

Peru: The General Index of the BVL ended today's session with a positive result of -0.64%. The index maintains an annual accumulated negative trend of -1.99% in local currency, while the adjusted yield in dollars amounts to -2.38%. Then, the S&P / BVL Peru SEL decreased by -3.39% while the S & P / BVL LIMA 25 decreased by -9.69%. The PEN spot reached S / 3.3760. Holder: Projected acceleration of the economy of Peru in the second half of the year due to improvements in primary sectors

Chile: The IPSA index ended the day with a positive performance + 0.16%. The index sectors with the highest results were those of Discretionary Consumer (+ 1.33%), First Needs Products (+ 0.84%) and Utilities (+ 0.49%). On the other hand, the values with the highest results were SACI Falabella (+ 1.68%) and Cia Cerveceria United SA (+ 1.79%). Owner: Piñera relaunches economic measures to accelerate investments and face low growth.

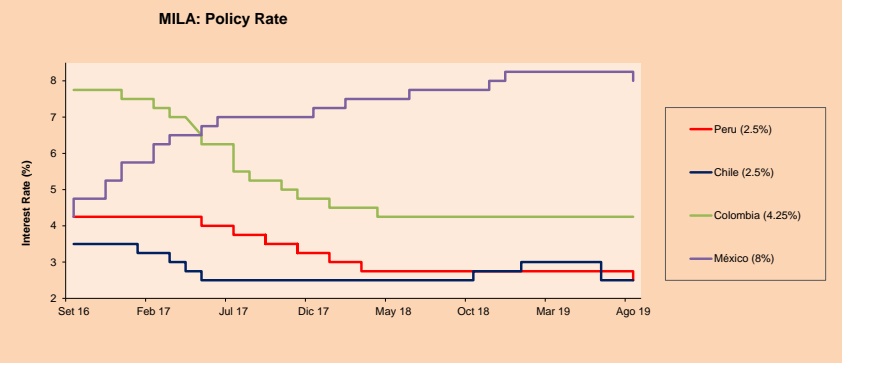
Colombia: The Colombian COLCAP index ended the day with a negative return -0.45%. The sectors of the index with the lowest results were Industrial (-3.68%), Finance (-1.2%) and Goods of first necessity (-0.15%). On the other hand, the values with the lowest results were Avianca Holdings SA (-0.31%), Bancolombia (-2.34%) and Grupo Nutresa SA (-0.23%). Holder: Confidence in the engine of the Colombian economy.

Brazil: The IBOV index closed the session with a positive result of + 2.00%. The sectors with the best yields were Energy (+5.52%) and information and technology (+ 4.74%). In addition, the actions with the worst performance were Petroleo Brasileiro SA (+5.95%) and Cielo SA (+ 4.74%). Holder: Sao Paulo Stock Exchange rises strongly awaiting privatizations in Brazil.



Base: 22/02/19=100
Source: Bloomberg

ETFs	Curr.	Close	1D	5D	30 D	YTD	Exchange
▼ iShares MSCI All Peru Caped Index Fund	USD	33.25	-0.30%	0.54%	-11.92%	-4.59%	NYSE Arca
▼ iShares MSCI Chile Capped	USD	36.23	-0.06%	0.11%	-8.65%	-10.83%	Cboe BZX
▲ Global X MSCI Colombia	USD	12.64	0.20%	3.44%	-6.87%	15.41%	NYSE Arca
▲ iShares MSCI Mexico Capped	USD	39.73	1.69%	3.92%	-5.45%	-1.56%	NYSE Arca
▲ iShares MSCI Emerging Markets	USD	40.16	0.96%	3.67%	-6.32%	3.60%	NYSE Arca
▲ Vanguard FTSE Emerging Markets	USD	40.25	0.78%	3.21%	-5.74%	6.58%	NYSE Arca
▲ iShares Core MSCI Emerging Markets	USD	48.26	0.92%	3.50%	-6.33%	3.38%	NYSE Arca
▲ iShares JP Morgan Emerging Markets Bonds	USD	56.65	0.41%	2.59%	-3.89%	2.51%	Cboe BZX
▲ Morgan Stanley Emerging Markets Domestic	USD	6.67	0.91%	0.60%	-6.32%	15.00%	New York



Source: Bloomberg

Capital Market Laboratory Coodinator: Economist Bruno Bellido Anicama
Collaboration: Juan Carlos Figueroa, Alonso Hernández, Manuel Muñoz Najar y Abril Retamozo.
e-mail: pulsohorsatil@ulima.edu.pe
facebook: www.facebook.com/pulsohorsatil
Phone number : 4376767 Annex: 35340

The content of this document is just for informational purposes. The information and opinions expressed should not be considered as recommendations for future decisions. Under any circumstances, the Capital Market Laboratory of University of Lima will be responsible for the use of the statements in this document.

PULSO BURSÁTIL

WORLD

Table with columns: Main Indices, Close, 1 D*, 5 D*, 1 M*, YTD*, Market Cap. (US\$ Mill.). Lists indices like Dow Jones, S&P 500, NASDAQ Composite, etc.

Equity

Table with columns: Largest gains, Curr., Price, %, Exchange, Largest losses, Curr., Price, %, Exchange. Lists equity movements for various markets like WDI GY, SIE GY, etc.

Global Overview:

United States:

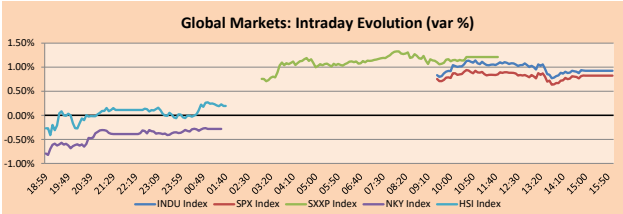
The US market culminated the day with an upward session, due to its main economic indexes; S&P 500 and Dow Jones, which had a growth of (1.44%) and (1.20%) respectively.

Europe:

The main indexes of the European market closed the day on the rise, after the previous day they touched minimum of six months due to the uncertainty caused by Brexit.

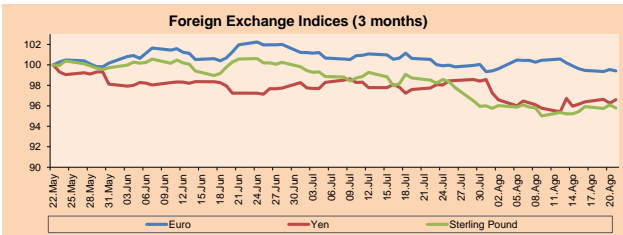
Asia:

The Asian market closed today's session with mixed results, after China threatened to take countermeasures if Trump's threats continued, but keeping hope of a trade agreement.



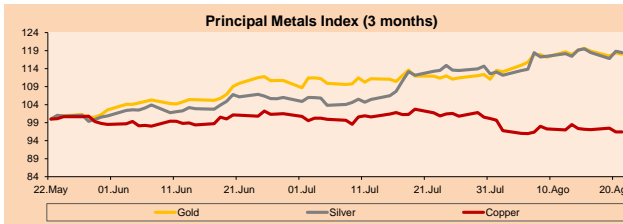
Source: Bloomberg

Table with columns: Currency, Price, 1 D*, 5 D*, 1 M*, YTD*. Lists currencies like Euro, Yen, Sterling Pound, etc.



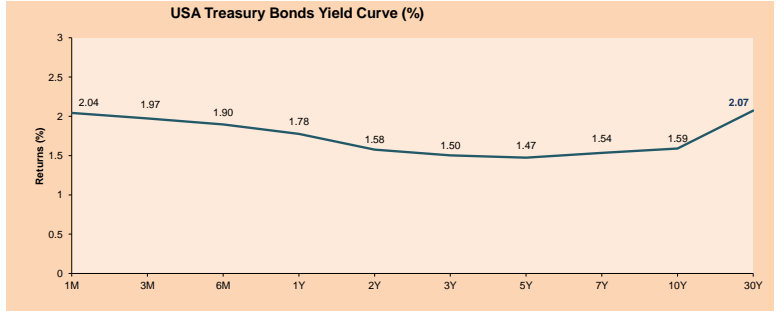
Base: 22/05/19=100
Source: Bloomberg

Table with columns: Commodities, Close, 1 D*, 5 D*, 1 M*, YTD*. Lists commodities like Oil, Wheat, Coffee, etc.



Base: 22/05/19=100
Source: Bloomberg

Table with columns: ETFs, Curr., Close, 1D, 5D, 30 D, YTD, Exchange. Lists various ETFs like SPDR S&P 500, iShares MSCI Emerging Market, etc.



Source: Bloomberg

Capital Market Laboratory Coordinator: Economist Bruno Bellido Anicama
Collaboration: Juan Carlos Figueroa, Alonso Hernández, Manuel Muñoz Najjar y Abril Retamozo
e-mail: pulsoBURSATIL@ulima.edu.pe
facebook: www.facebook.com/pulsoBURSATIL
Phone number: 4376767 Anexo: 35340



PULSO BURSÁTIL

LIMA

Stocks

Ticker	Currency	Price	1D*	5D*	30D*	YTD*	Frequency	Volume (US\$)	Beta	Dividend Yield (%)	Price Earning	Market Cap. (M US\$)	Economic Sector*	Index Weight
▼ ALICORC1 PE**	S/.	9.56	-1.44%	-1.44%	-10.65%	-1.78%	100.00%	736,402	0.59	2.51	19.35	2,412.95	Industrial	3.53%
ATACOCB1 PE**	S/.	0.19	0.00%	-2.56%	-7.32%	-40.99%	52.63%	1,750	1.23	0.00	5.12	53.17	Mining	1.02%
- BACKUSI1 PE**	S/.	23.80	0.00%	0.00%	2.15%	20.00%	73.68%	37,570	0.35	5.94	7.76	9,014.22	Industrial	0.82%
▲ BAP PE**	US\$	206.00	0.27%	2.16%	-9.77%	-4.53%	100.00%	2,223,895	1.11	2.93	-	16,430.86	Diverse	5.82%
▼ BVN PE**	US\$	14.59	-2.73%	0.55%	-15.66%	-9.05%	100.00%	91,080	1.61	0.79	-	4,021.51	Mining	5.88%
▼ CASAGRC1 PE**	S/.	3.18	-1.55%	-2.15%	-5.55%	-21.36%	100.00%	5,826	0.43	0.99	21.82	79.33	Agricultural	1.31%
- BBVAC1 PE**	S/.	3.22	0.00%	0.00%	-5.85%	-7.20%	100.00%	20,483	0.62	4.28	12.72	5,612.43	Finance	2.85%
- CORAREI1 PE**	S/.	0.66	0.00%	-2.94%	-5.04%	-0.60%	100.00%	21,472	0.86	9.29	3.51	318.23	Industrial	1.72%
▼ CPACASC1 PE**	S/.	5.55	-2.63%	-2.63%	-5.93%	-13.95%	100.00%	645,115	0.60	6.79	30.83	701.87	Industrial	2.38%
▼ CVERDEC1 PE**	US\$	17.50	-2.78%	-7.89%	-15.46%	-14.36%	89.47%	43,848	0.76	2.45	133.59	6,125.98	Mining	5.25%
- ENGEPEC1 PE**	S/.	2.40	0.00%	-1.36%	-6.69%	28.34%	84.21%	5,331	0.69	0.00	13.16	2,017.77	Public Services	1.44%
- ENDISPC1**	S/.	6.18	0.00%	-0.74%	0.06%	20.42%	63.16%	4,691	0.64	0.00	10.08	1,168.76	Public Services	0.98%
▼ FERREY1 PE**	S/.	2.07	-0.48%	-0.48%	-2.36%	-12.14%	100.00%	681,237	0.80	8.49	7.24	598.15	Diverse	4.90%
- GRAMONC1 PE**	S/.	1.80	0.00%	11.11%	-4.26%	-9.55%	89.47%	155,913	0.95	0.00	-	464.82	Diverse	4.05%
- IFS PE**	US\$	39.84	0.00%	1.76%	-14.67%	-1.49%	89.47%	10,047	0.91	0.00	11.44	4,599.44	Diverse	7.22%
- INRETC1 PE**	US\$	38.00	0.00%	5.56%	-5.47%	35.47%	94.74%	427,333	1.00	0.90	31.83	3,906.68	Diverse	5.28%
▼ LUSURC1 PE**	S/.	15.00	-0.99%	3.45%	4.90%	41.19%	84.21%	356,448	0.51	5.27	12.01	2,163.27	Public Services	1.81%
- MINSURH1 PE**	S/.	1.53	0.00%	-0.65%	-10.00%	15.91%	57.89%	14,258	1.42	0.00	2.82	1,306.38	Mining	3.09%
- PML PE**	US\$	0.09	0.00%	-5.26%	-21.74%	-48.57%	31.58%	2,259	1.40	0.00	-	23.75	Mining	2.12%
- RELAPAC1 PE**	S/.	0.10	0.00%	-5.45%	-13.33%	-17.46%	100.00%	2,341	0.63	0.00	-	256.24	Industrial	2.12%
▼ SCCO PE**	US\$	30.00	-0.30%	-2.28%	-19.22%	2.95%	100.00%	44,550	1.49	6.81	15.96	23,191.77	Mining	2.14%
- SIDERC1 PE**	S/.	0.56	0.00%	-6.67%	-13.85%	15.94%	94.74%	3,317	1.47	18.23	6.09	203.65	Industrial	1.43%
▲ TV PE**	US\$	0.15	2.84%	-3.33%	-29.27%	-51.18%	89.47%	5,580	1.71	0.00	-	118.05	Mining	2.93%
▲ UNACEMC1 PE**	S/.	2.35	0.43%	4.58%	-1.51%	-8.17%	84.21%	4,425	0.52	2.21	11.30	1,265.39	Industrial	3.00%
▲ VOLCABC1 PE**	S/.	0.44	2.09%	-9.11%	-15.58%	-38.17%	100.00%	87,681	1.28	3.11	-	530.02	Mining	5.90%
- NEXAPEC1 PE**	S/.	3.10	0.00%	0.32%	-6.06%	-15.55%	68.42%	1,533	1.09	0.00	16.13	1,214.58	Mining	1.56%

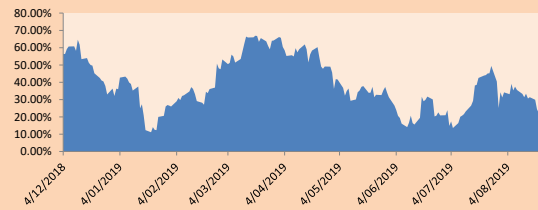
Quantity of shares: 26
 Source: Bloomberg, Economática
 * Bloomberg Industry Classification System
 ** PER is used in the stock market and original currency of the instrument
 *Legend: Variation 1D: 1 Day; 5D: 5 Days, 1M: 1 Month; YTD: Var.% 12/31/18 to date

Sectorial Indices

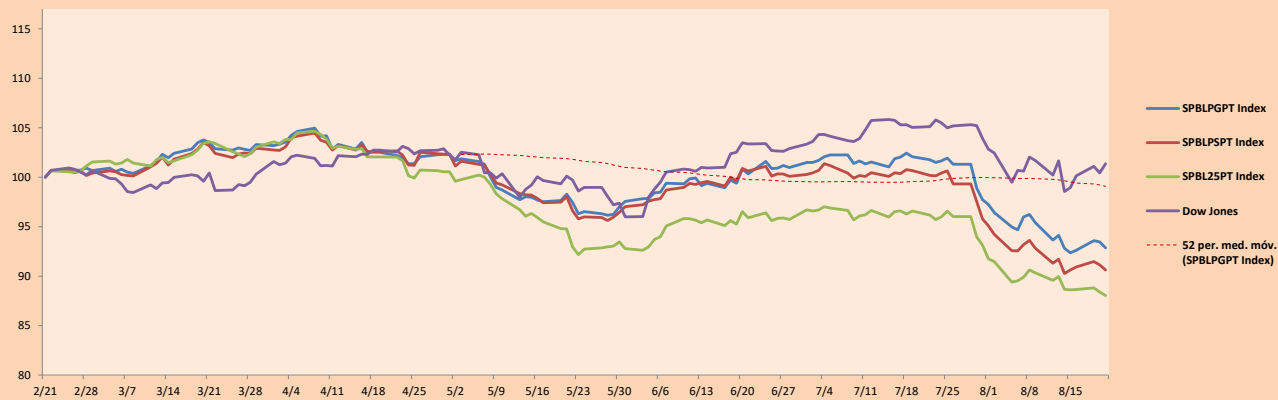
	Close	1D*	5D*	30D*	YTD*	Beta
▼ Mining Index	261.04	-1.54%	-2.08%	-14.58%	-8.35%	1.54
▼ Consumer Index	1,156.06	-0.66%	1.41%	-5.32%	14.96%	0.37
▼ Industrial Index	204.60	-0.57%	1.68%	-3.56%	-9.83%	0.55
▲ Banking and Financial Index	1,153.51	0.08%	1.21%	-7.18%	-3.87%	1.12
▼ Construction Index	225.44	-0.63%	2.94%	-4.03%	-8.31%	0.49
▼ Services Index	510.20	-0.28%	0.87%	-0.74%	28.32%	0.20
▼ Juniors Index	18.29	-0.16%	-3.64%	-6.78%	-37.87%	0.26
▼ Electric Index	498.08	-0.28%	0.86%	-0.75%	28.31%	0.20

*Legend: Variation 1D: 1 Day; 5D: 5 Days, 1M: 1 Month; YTD: Var.% 12/31/18 to date

Correlation Graph of Returns of Mining Index against Metallic Index of London (3 months)



Indices (6 months)



Source: Bloomberg

Capital Market Laboratory Coordinator: Economist Bruno Bellido Anicama
 Collaboration: Juan Carlos Figueroa, Alonso Hernández, Manuel Muñoz Najar y Abril Retamozo.
 e-mail: pulsobursatil@ulima.edu.pe
 facebook: www.facebook.com/pulsobursatil.ul
 Phone number : 4376767 Annex: 35340

The content of this document is just for informational purposes. The information and opinions expressed should not be consider as recommendations for future decisions. Under any circumstances, the Capital Market Laboratory of University of Lima will be responsible for the use of the statements in this document.

PULSO BURSÁTIL

SOVEREIGN RATING

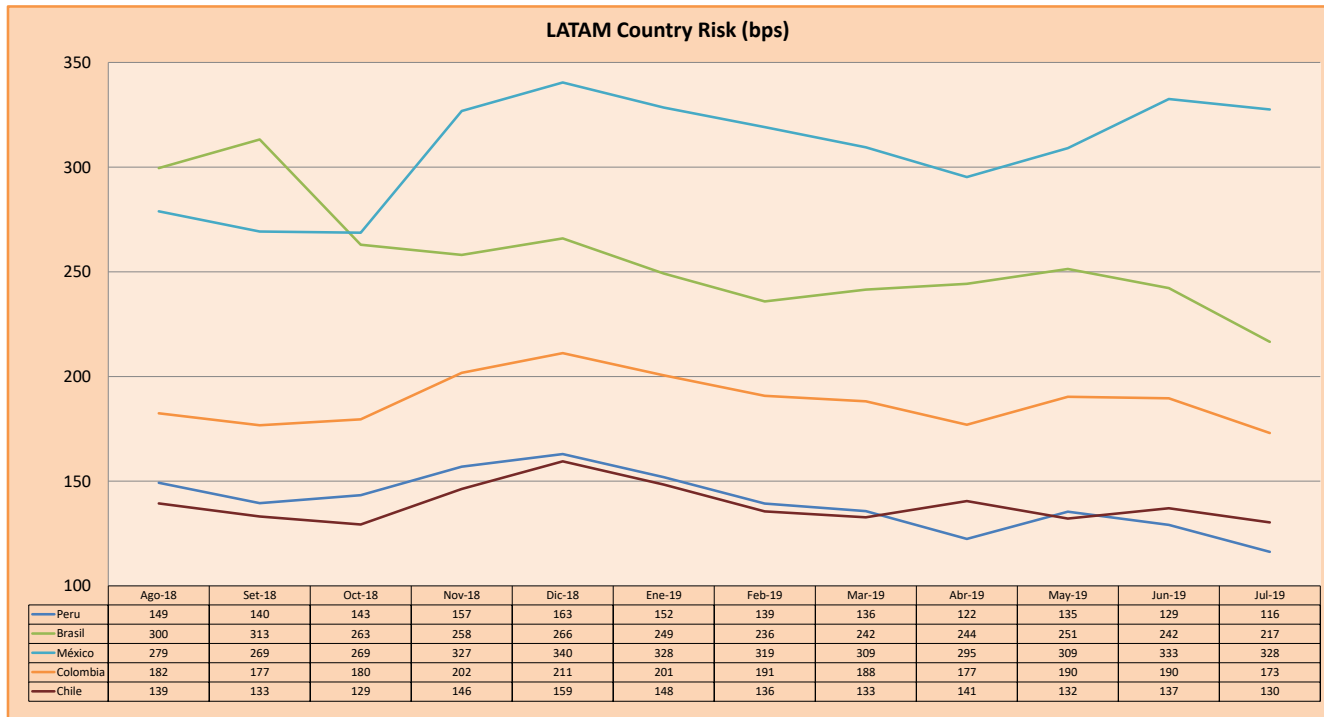
RISK RATINGS

Moody's	S&P	Fitch	
Aaa	AAA	AAA	Prime
Aa1	AA+	AA+	High credit quality
Aa2	AA	AA	
Aa3	AA-	AA-	
A1	A+	A+	Medium-high grade, with low credit risk
A2	A	A	
A3	A-	A-	
Baa1	BBB+	BBB+	Moderate Credit Risk
Baa2	BBB	BBB	
Baa3	BBB-	BBB-	
Ba1	BB+	BB+	It has speculative elements and it is subject to substantial credit risk
Ba2	BB	BB	
Ba3	BB-	BB-	
B1	B+	B+	It is considered speculative and it has high credit risk
B2	B	B	
B3	B-	B-	
Caa1	CCC+		Bad credit conditions and it is subject to high credit risk
Caa2	CCC		
Caa3	CCC-	CCC	
Ca	C		Very close to default or in default
		DDD	
C	D	DD D	

Source: Bloomberg

Latin America Credit Rating			
Clasificadora de riesgo			
Country	Moody's	Fitch	S&P
Peru	A3	BBB+	BBB+
Mexico	A3	BBB	BBB+
Venezuela	C	WD	SD
Brazil	Ba2	BB-	BB-
Colombia	Baa2	BBB	BBB-
Chile	A1	A	A+
Argentina	B2	CCC	B-
Panama	Baa1	BBB	BBB+

Source: Bloomberg



Source: BCRP

Capital Market Laboratory Coordinator: Economist Bruno Bellido Anicama
Support: Juan Carlos Figueroa, Alonso Hernández, Manuel Muñoz Najar y Abril Retamozo.
e-mail: pulsobursatil@ulima.edu.pe
facebook: www.facebook.com/pulsobursatil.ul
Phone number : 4376767 Annex: 35340

The content of this document is just for informational purposes. The information and opinions expressed should not be considered as recommendations for future decisions. Under any circumstances, the Capital Market Laboratory of University of Lima will be responsible for the use of the statements in this document.