



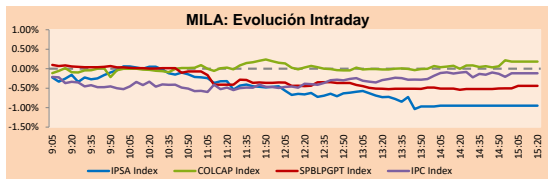
PULSO BURSÁTIL

Lima, Sep 23, 2019

MILA

Main Indices	Close	1 D	5 D	1 M	YTD	Market Cap. (US\$ bill)
▼ IPSA (Chile)	5,025.21	-0.94%	1.38%	4.72%	-1.57%	144.98
▼ IGPA (Chile)	25,303.85	-0.78%	1.35%	3.77%	-2.49%	183.35
▲ IGBC (Colombia)	12,992.95	0.21%	-0.19%	6.73%	16.59%	99.57
▲ COLCAP (Colombia)	1,597.15	0.18%	-0.22%	6.10%	20.46%	95.05
▼ S&P/BVL (Perú)*	19,370.13	-0.44%	-0.50%	2.99%	0.10%	102.43
▲ S&P/BVL SEL (Perú)	505.15	0.12%	-0.18%	3.39%	-1.41%	68.81
▲ S&P/BVL LIMA 25	24,399.41	-0.13%	-0.60%	3.41%	-7.95%	83.72
▲ IPC (México)	43,507.95	-0.12%	1.56%	1.91%	4.49%	277.26
▼ S&P MILA 40	614.72	-0.37%	-1.16%	7.90%	1.00%	257.96

* Market Cap. Of the last price Legend: Variation 1D: 1 day; 5D: 5 days; 1M: 1 Month; YTD: Var%/12/31/18 to date

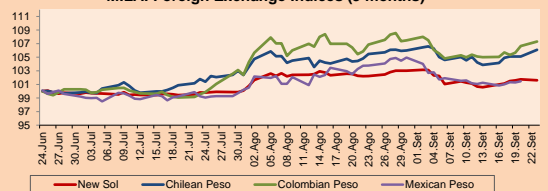


Source: Bloomberg

Currency	Price	1D*	5D*	30 D*	YTD*
▼ New Sol (PEN)	3,355.3	-0.11%	0.67%	-0.62%	-0.41%
▲ Chilean Peso (CLP)	722.28	0.93%	1.85%	0.57%	4.13%
▲ Colombian Peso (COP)	3,437.00	0.61%	2.16%	0.41%	5.76%
▲ Mexican Peso (MXN)	19.48	0.17%	0.21%	-2.22%	-0.87%

* Legend: Variation 1D: 1 day; 5D: 5 days; 1M: 1 Month; YTD: Var%/12/31/18 to date

MILA: Foreign Exchange Indices (3 months)

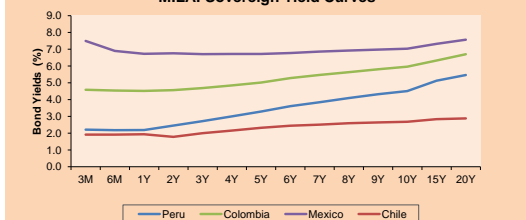


Base: 24/06/19=100 Source: Bloomberg

Fixed Income

Instrument	Currency	Price	Bid Yield (%)	Ask Yield (%)	Duration
PERU 4.125 08/25/2027	USD	113.025	2.34	2.29	6.82
PERU 7.35 07/21/25	USD	127.863	2.25	2.20	4.87
PERU 8.75 11/21/33	USD	167.695	2.90	2.88	9.48
PERU 6.55 03/14/37	USD	148.553	2.99	2.95	11.39
PERU 5.625 11/18/2050	USD	148.927	3.16	3.14	17.59
CHILE 2.25 10/30/22	USD	100.604	2.08	2.01	2.95
CHILE 3.875 08/05/20	USD	101.604	2.18	1.81	0.85
CHILE 3.625 10/30/2042	USD	111.259	2.95	2.95	16.05
COLOM 11.75 02/25/20	USD	103.711	3.00	2.43	0.42
COLOM 11.85 03/09/28	USD	163.302	3.27	3.20	6.10
COLOM 10.375 01/28/33	USD	161.525	4.36	4.20	8.55
COLOM 7.375 09/18/37	USD	143.59	3.97	3.95	11.38
COLOM 6.125 01/18/41	USD	131.468	3.95	3.91	13.12
MEX 4 10/02/23	USD	105.956	2.48	2.40	3.65
MEX5.55 01/45	USD	121.159	4.201	4.172	14.67

MILA: Sovereign Yield Curves



Source: Bloomberg

Equity

Largest gains	Exchange	Amt.	Price	▲%
PML	Lima	USD	0.10	11.76
FUTURAI1	Lima	PEN	1.00	8.70
GANADERO	Colomb.	COP	369.00	8.53
TELEFBC1	Lima	PEN	0.70	6.06

Largest losses	Exchange	Amt.	Price	▼%
POMALCC1	Lima	PEN	0.04	-6.67
RELAPAC1	Lima	PEN	0.11	-5.26
ENKA	Colomb.	COP	8.05	-4.17
CMPC	Santia.	CLP	1749.90	-3.96

Per Turnover

	Exchange	Amount (US\$)
CHILE	Santia.	57,359,847
CMPC	Santia.	19,879,700
COPEC	Santia.	17,294,055
BSANTANDER	Santia.	11,236,221
FALABELLA	Santia.	10,918,296

Per Volume

	Exchange	Volume
CHILE	Santia.	398,241,435
BSANTANDER	Santia.	156,933,761
ORO BLANCO	Santia.	54,651,224
VAPORES	Santia.	39,193,307
NORTEGRAN	Santia.	33,004,881

MILA

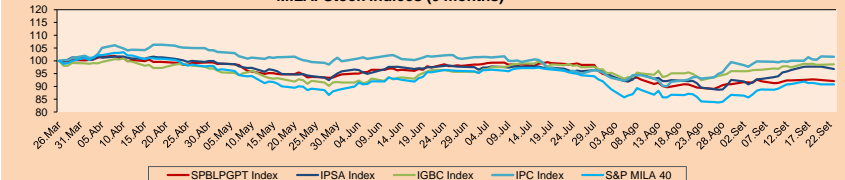
Peru: The General BVL index ended today's session with a negative result of -0.44%. The index maintains a positive trend in local currency, while the adjusted yield in dollars amounts to + 0.33%. Then, the S&P / BVL Peru SEL varied by + 0.12%, while the S & P / BVL LIMA 25 dropped -0.13%. The PEN spot reached S / 3.3550. Headline: Formal employment accelerates in July for the second consecutive month.

Chile: The IPSA index closed today with a negative yield of -0.94%. The sectors with the worst results were Energy (-2.71%) and Industrial (-2.39%). On the other hand, the values with the lowest results of the day were Empresas CMPC SA (-4.38%) and Latam Airlines Group SA (-2.80%). Owner: Interest rates on mortgage loans fell to a new historical low and could continue to fall. Headline: Codeco issues bonds for US \$ 2 billion and refinances short- and medium-term debt.

Colombia: The COLCAP index closed today with a positive performance of +0.18%. The sectors with the highest results were Materials (+0.91%) and Finance (+0.81%). On the other hand, the values with the best returns of the day were Interconexión Eléctrica SA ESP (2.01%) and Grupo Nutresa SA (-1.85%). Headline: Central Bank of Colombia maintains interest rate, raises growth estimate

Mexico: The MEXBOL index closed today with a negative return of -0.13%. The sectors with the worst results were Profits (-1.40%) and Basic consumption (-0.79%). On the other hand, the values with the worst returns were Grupo Elektra SAB de CV (-2.32%) and Orbia Advance Corp SAB de CV (-2.19%). Headline: Mexico's GDP will hardly grow 0.3% this year.

MILA: Stock Indices (6 months)

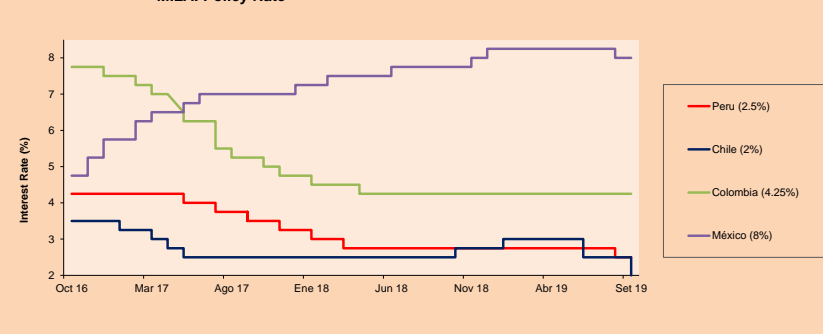


Base: 27/03/19=100 Source: Bloomberg

ETFs

	Curr.	Close	1D	5D	30 D	YTD	Exchange
▲ iShares MSCI All Peru Caped Index Fund	USD	34.62	0.03%	-0.94%	4.66%	-0.66%	NYSE Arca
▲ iShares MSCI Chile Capped	USD	37.58	-1.03%	-1.62%	7.62%	-7.51%	Cboe BZX
▼ Global X MSCI Colombia	USD	12.89	-0.42%	-1.83%	5.89%	17.70%	NYSE Arca
▲ iShares MSCI Mexico Capped	USD	43.6	-0.30%	1.28%	11.88%	8.03%	NYSE Arca
▲ iShares MSCI Emerging Markets	USD	41.65	0.10%	-0.62%	6.66%	7.45%	NYSE Arca
▲ Vanguard FTSE Emerging Markets	USD	41.65	0.36%	-0.48%	6.06%	10.29%	NYSE Arca
▲ iShares Core MSCI Emerging Markets	USD	50.01	0.18%	-0.80%	6.43%	7.13%	NYSE Arca
▲ iShares JP Morgan Emerging Markets Bonds	USD	57.6	0.02%	-0.69%	3.30%	4.22%	Cboe BZX
▼ Morgan Stanley Emerging Markets Domestic	USD	6.63	-0.60%	-1.34%	-0.15%	14.31%	New York

MILA: Policy Rate



Source: Bloomberg

Capital Market Laboratory Coodinator: Economist Bruno Bellido Anicama
Collaboration: Juan Carlos Figueroa, Alonso Butters, Jeanpiere León y Manuel Muñoz Najar
e-mail: pulsobursatil@ulima.edu.pe
facebook: www.facebook.com/pulsobursatil.ul
Phone number : 4376767 Annex: 35340

PULSO BURSÁTIL

WORLD

Main Indices	Close	1 D*	5 D*	1 M*	YTD*	Market Cap. (US\$ Mill.)
▲ Dow Jones (USA)	26,949.99	0.06%	-0.47%	5.15%	15.53%	7,486,700
▼ Standard & Poor's 500 (USA)	2,991.78	-0.01%	-0.21%	5.08%	19.34%	25,831,737
▼ NASDAQ Composite (USA)	8,112.46	-0.06%	-0.50%	4.65%	22.26%	12,582,441
▼ Stoxx EUROPE 600 (Europe)	389.80	-0.80%	0.07%	4.97%	15.44%	9,574,772
▼ DAX (Germany)	12,342.33	-1.01%	-0.31%	6.29%	16.89%	1,047,457
▼ FTSE 100 (United Kingdom)	7,326.08	-0.25%	0.06%	3.26%	8.93%	1,580,880
▼ CAC 40 (France)	5,630.76	-1.05%	0.51%	5.70%	19.03%	1,583,497
▼ IBEX 35 (Spain)	9,093.60	-0.93%	0.46%	5.13%	6.48%	520,801
▲ MSCI AC Asia Pacific Index	159.38	0.38%	-0.19%	4.59%	8.64%	18,272,048
▲ HANG SENG (Hong Kong)	26,222.40	-0.81%	-3.33%	1.16%	1.45%	2,390,597
▼ SHANGHAI SEC Comp. (China)	2,977.08	-0.98%	-1.77%	2.75%	19.37%	4,648,113
▲ NIKKEI 225 (Japan)	22,079.09	0.16%	1.47%	6.61%	10.31%	3,400,149
▲ BOVESPA (Brazil)	104,637.80	-0.17%	0.92%	7.14%	19.06%	767,953
▲ Merval (Argentina)	29,094.70	-3.02%	-4.61%	9.65%	-3.76%	17,472

*Legend: Variation 1D: 1 Day; 5D: 5 Days; 1M: 1 Month; YTD: Var.% 12/31/18 to date

Equity

Alemania (Acciones del DAX Index)									
Largest gains	Curr.	Price	▲%	Exchange	Largest losses	Curr.	Price	▼%	Exchange
RWE GY	EUR	28.57	1.35	Xetra	DBK GY	EUR	7.051	-3.50	Xetra
LHA GY	EUR	14.215	0.99	Xetra	DAI GY	EUR	46.24	-2.33	Xetra
DTE GY	EUR	15.424	0.30	Xetra	BAYN GY	EUR	66.85	-2.05	Xetra
DB1 GY	EUR	139.7	0.25	Xetra	VOW3 GY	EUR	156.58	-2.02	Xetra

Europe (Stocks from STOXX EUROPE 600)									
Largest gains	Curr.	Price	▲%	Exchange	Largest losses	Curr.	Price	▼%	Exchange
TUI LN	GBp	901.4	7.23	Londres	CBK GY	EUR	5.296	-7.46	Xetra
EZJ LN	GBp	1106.5	4.63	Londres	NMC LN	GBp	2702	-7.15	Londres
COLR BB	EUR	48.25	2.91	EN Brussels	SDF GY	EUR	12.89	-6.70	Xetra
CLNX SQ	EUR	37.16	2.79	Soc.Bol BISE	MT NA	EUR	13.012	-5.93	EN Amsterdam

Global Overview:

United States:

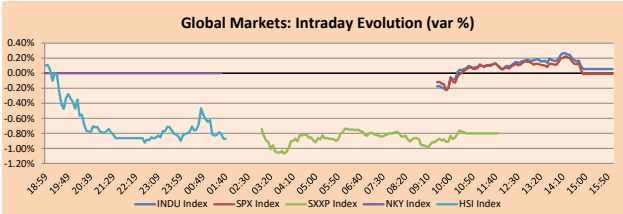
The US market closed the day with its main indexes stable. On the economic side, data were reported with mixed results, on the one hand, the purchasing managers index rose in September from 50.7 to 50.9 compared to the previous month, on the contrary, employment in the services sector fell for the first time since the crisis financial. The shares that stood out on the day were those related to Apple Inc (+0.72%), such as Micro Technology Inc (+1.80%), after the iPhone manufacturing company achievement that the trade regulators approved 10 of 15 business requirements for exceptions in tariffs on products manufactured in China. Incorporate news, Boeing Co (-0.62%) agreed to pay \$ 144,500 to each of the families of the 346 victims related to the two accidents of the 737 MAX plane, the total funds (\$ 50 million) will come from an assistance fund for the relatives of the victims, in a situation where the company plans to leave behind this sad chapter. With regard to metals, gold rose to a maximum of two weeks to \$ 1523 per ounce, due to fears of a recession in Europe and weak economic data worldwide.

Europe:

The European market ended the day with a negative result. The most representative stock exchanges in Europe had the following results, Euro Stoxx 50 down -0.96%, CAC 40 down -1.05% and DAX down -1.01%. The commercial activity of the largest economy in the block (USA) has deteriorated and the possibility of a possible recession scared investors. Likewise, German private sector activity declined, for the first time in almost 6 years, as the manufacturing recession intensified and growth in the service sector lost momentum. In other news, the largest bank listed in France, BNP Paribas, will launch a new voluntary dismissal plan that will affect about 10% of employees in Paris that aims to rationalize the supply of products, regional organization and entities to maintain Your competitive position. The oldest tourist agency, Thomas Cook, entered into mandatory liquidation after failing to secure an agreement with the creditors or a government bailout of a gigantic debt. The companies with the worst results today were Deutsche Bank AG (-3.50%) by the German market and the Bilbao Vizcaya Argentari Bank from the Euro Stoxx 50 index.

Asia:

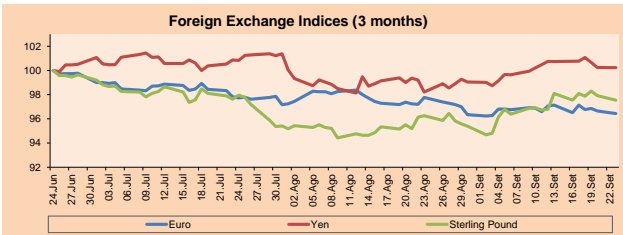
Asian markets ended the day on the downside, while investors monitor the development of the trade front between the U.S. and China. The Chinese Ministry of Commerce announced that the economic and commercial teams of the 2 largest economies had "constructive" discussions in Washington at the end of last week. They will keep in touch. However, the canceled visit of Beijing officials to U.S. farms in Montana reduced expectations of reaching a trade agreement. On the other hand, markets in Japan closed on Monday for vacations. Thus, in China, the Shanghai Composite -0.98% and Shenzhen Composite -0.91% fell as did the Hong Kong Hang Seng -0.81%. Shares of Founsun-related companies in China declined after the collapse of the world's oldest travel company, Thomas Cook. Founsun tourism fell -4.36% and International Song decreased -1.34%. Regarding South Korea and Australia, Kospi Composite +0.01% and S & P / ASX 200 +0.28% rose. Likewise, in India, the shares resisted the general downward trend at the regional level.



Source: Bloomberg

Currency	Price	1 D*	5 D*	1 M*	YTD*
▼ Euro	1.0993	-0.22%	-0.07%	-1.35%	-4.13%
▼ Yen	107.5500	-0.01%	-0.53%	2.05%	-1.95%
▼ Sterling Pound	1.2429	-0.39%	-0.02%	1.33%	-2.55%
▲ Yuan	7.1180	0.37%	0.72%	0.32%	3.48%
▲ Hong Kong Dollar	7.8388	0.03%	0.25%	-0.05%	0.09%
▲ Brazilian Real	4.1646	0.42%	2.06%	1.03%	7.49%
▲ Argentine Peso	56.9260	0.46%	1.17%	3.23%	51.13%

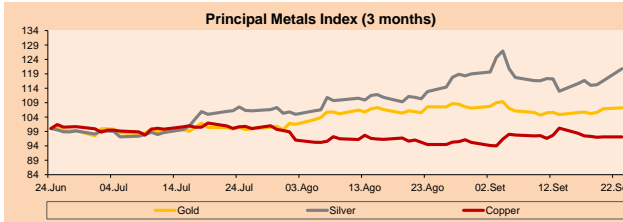
*Legend: Variación 1D: 1 Day; 5D: 5 Days; 1M: 1 Month; YTD: Var.% 12/31/18 to date



Base: 24/06/19=100
Source: Bloomberg

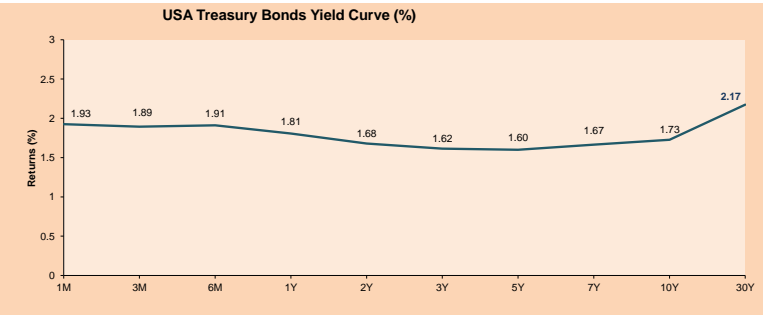
Commodities	Close	1 D*	5 D*	1 M*	YTD*
▲ Oro (US\$ Oz. T) (LME)	1,522.24	0.39%	1.59%	-0.31%	18.70%
▲ Plata (US\$ Oz. T) (LME)	18.64	3.60%	4.44%	7.00%	20.31%
▲ Cobre (US\$ TM) (LME)	5,770.00	0.00%	-1.27%	2.80%	-3.01%
▲ Zinc (US\$ TM) (LME)	2,312.00	0.00%	-2.41%	2.62%	-8.20%
▲ Petróleo WTI (US\$ Barril) (NYM)	58.49	0.69%	-6.67%	8.27%	21.30%
▲ Estano (US\$ TM) (LME)	16,726.00	0.00%	-2.52%	5.16%	-14.31%
▲ Plomo (US\$ TM) (LME)	2,109.25	0.00%	1.20%	1.90%	5.09%
▲ Acaúcar #11 (US\$ Libra) (NYB-ICE)	12.21	1.16%	-0.41%	-2.48%	-7.15%
▲ Cacao (US\$ TM) (NYB-ICE)	2,454.00	-0.77%	2.98%	9.65%	-0.57%
▲ Café Arabica (US\$ TM) (NYB-ICE)	99.00	0.61%	-5.08%	3.07%	-13.42%

*Legend: Variación 1D: 1 Día; 5D: 5 Días; 1M: 1 Mes; YTD: Var.% 31/12/17 a la fecha



Base: 24/06/19=100
Source: Bloomberg

ETFs	Curr.	Close	1D	5D	30 D	YTD	Exchange
SPDR S&P 500 ETF TRUST	USD	298.21	-0.02%	-0.19%	5.17%	20.99%	NYSE Arca
ISHARES MSCI EMERGING MARKET	USD	41.65	0.10%	-0.62%	6.66%	7.45%	NYSE Arca
ISHARES IBOXX HIGH YLD CORP	USD	87.44	-0.05%	-0.03%	1.46%	11.67%	NYSE Arca
FINANCIAL SELECT SECTOR SPDR	USD	28.13	0.18%	-0.41%	8.33%	19.91%	NYSE Arca
VANECK GOLD MINERS	USD	29.16	1.64%	6.85%	-1.62%	38.25%	NYSE Arca
ISHARES RUSSELL 2000 ETF	USD	155.31	-0.08%	-1.64%	6.79%	16.71%	NYSE Arca
SPDR GOLD SHARES	USD	143.75	0.56%	1.72%	-0.29%	18.56%	NYSE Arca
ISHARES 20+ YEAR TREASURY BO	USD	141.86	-0.02%	2.59%	-2.64%	18.68%	NASDAQ GM
INVESCO QQQ TRUST SERIES 1	USD	190.50	0.04%	-0.42%	4.84%	24.24%	NASDAQ GM
ISHARES NASDAQ BIOTECHNOLOGY	USD	104.63	-0.87%	-0.49%	2.17%	8.59%	NASDAQ GM
ENERGY SELECT SECTOR SPDR	USD	61.30	0.03%	-2.01%	10.55%	9.70%	NYSE Arca
PROSHARES ULTRA VIX ST FUTUR	USD	25.04	-1.18%	-2.38%	-23.11%	-69.98%	NYSE Arca
UNITED STATES OIL FUND LP	USD	12.21	0.08%	-4.83%	9.12%	26.40%	NYSE Arca
ISHARES MSCI BRAZIL ETF	USD	41.84	-0.85%	-1.20%	5.90%	10.92%	NYSE Arca
SPDR S&P OIL & GAS EXP & PR	USD	23.71	-0.34%	-8.31%	13.68%	-9.79%	NYSE Arca
UTILITIES SELECT SECTOR SPDR	USD	63.88	0.02%	2.20%	4.71%	23.53%	NYSE Arca
ISHARES US REAL ESTATE ETF	USD	93.71	0.15%	1.33%	2.89%	26.91%	NYSE Arca
SPDR S&P BIOTECH ETF	USD	81.71	-1.21%	-2.56%	2.95%	13.89%	NYSE Arca
ISHARES IBOXX INVESTMENT GRA	USD	127.08	-0.07%	1.41%	-0.76%	15.32%	NYSE Arca
ISHARES JP MORGAN USD EMERGI	USD	114.21	-0.23%	0.99%	0.52%	13.45%	NASDAQ GM
REAL ESTATE SELECT SECT SPDR	USD	39.26	0.36%	1.37%	2.44%	29.24%	NYSE Arca
ISHARES CHINA LARGE-CAP ETF	USD	40.53	-0.02%	-2.24%	5.71%	4.76%	NYSE Arca
CONSUMER STAPLES SPDR	USD	60.56	0.40%	0.77%	2.18%	21.54%	NYSE Arca
VANECK JR GOLD MINERS	USD	40.17	2.37%	7.49%	-2.55%	32.93%	NYSE Arca
SPDR BBG BARC HIGH YIELD BND	USD	109.11	-0.04%	0.00%	1.46%	12.41%	NYSE Arca
VANGUARD REAL ESTATE ETF	USD	93.60	0.16%	1.25%	3.20%	27.63%	NYSE Arca
GRAYSACLE BITCOIN TRUST BTC	USD	12.22	-4.53%	-0.24%	-9.08%	208.20%	OTC US



Source: Bloomberg

Capital Market Laboratory Coordinador: Economista Bruno Bellido Anicama
Collaboration: Juan Carlos Figueroa, Alonso Butters, Jeanpierre León y Manuel Muñoz Najar
e-mail: pulsoBursatil@ulima.edu.pe
facebook: www.facebook.com/pulsoBursatilulima
Phone number: 4376767 Anexo: 35340

PULSO BURSÁTIL

LIMA

Stocks

Ticker	Currency	Price	1D*	5D*	30D*	YTD*	Frequency	Volume (US\$)	Beta	Dividend Yield (%)	Price Earning	Market Cap. (M US\$)	Economic Sector*	Index Weight
▲ ALICORC1 PE**	S/.	9.35	0.54%	-0.43%	-1.06%	-3.94%	100.00%	247,818	0.57	2.57	18.92	2,374.80	Industrial	3.53%
- ATACOCB1 PE**	S/.	0.19	0.00%	-1.57%	0.53%	-41.61%	73.68%	5,558	1.31	0.00	5.09	52.94	Mining	1.02%
- BACKUSH1 PE**	S/.	23.92	0.00%	-0.21%	2.97%	22.52%	78.95%	45,119	0.34	0.00	7.92	9,683.30	Industrial	0.82%
▼ BAP PE**	US\$	207.40	-1.24%	-3.89%	3.01%	-3.88%	94.74%	244,116	1.28	2.91	-	16,542.53	Diverse	5.82%
▲ BVN PE**	US\$	15.00	1.21%	4.97%	0.40%	-6.49%	78.95%	13,167	1.71	0.77	-	4,134.52	Mining	5.88%
- CASAGRC1 PE**	S/.	3.12	0.00%	0.97%	-1.58%	-22.85%	100.00%	2,790	0.44	0.41	21.41	78.33	Agricultural	1.31%
▲ BBVAC1 PE**	S/.	3.30	1.23%	-2.08%	2.48%	-4.90%	100.00%	83,424	0.58	4.18	13.04	5,788.21	Finance	2.85%
- CORAREI1 PE**	S/.	0.69	0.00%	0.00%	7.81%	3.92%	94.74%	36,638	1.01	8.88	3.67	327.65	Industrial	1.72%
▲ CPACASC1 PE**	S/.	5.85	0.86%	2.63%	4.46%	-9.30%	94.74%	28,890	0.59	6.44	32.50	743.96	Industrial	2.38%
▼ CVERDEC1 PE**	US\$	18.80	-1.57%	-2.08%	7.43%	-8.00%	94.74%	4,888	0.89	2.28	143.51	6,581.05	Mining	5.25%
- ENGEPEC1 PE**	S/.	2.48	0.00%	0.81%	3.33%	32.62%	73.68%	7,797	0.70	0.00	13.60	2,098.20	Public Services	1.44%
- ENDISPC1**	S/.	6.39	0.00%	0.00%	3.40%	24.51%	89.47%	8,856	0.66	0.00	10.42	1,216.11	Public Services	0.98%
▼ FERREYC1 PE**	S/.	2.09	-0.95%	-0.95%	2.96%	-11.29%	100.00%	85,593	0.79	8.41	7.31	607.75	Diverse	4.90%
- GRAMONC1 PE**	S/.	1.63	0.00%	-3.55%	-4.12%	-18.09%	57.89%	248	0.94	0.00	-	423.58	Diverse	4.05%
▼ IFS PE**	US\$	40.99	-2.64%	-1.94%	5.10%	1.35%	73.68%	40,990	0.95	4.27	11.71	4,732.20	Diverse	7.22%
▲ INRETC1 PE**	US\$	37.10	1.09%	0.00%	-2.62%	32.26%	94.74%	52,200	0.72	0.92	30.90	3,814.15	Diverse	5.28%
- LUSURC1 PE**	S/.	16.25	0.00%	0.00%	10.00%	55.31%	100.00%	224,709	0.65	5.17	13.01	2,358.35	Public Services	1.81%
- MINSUR1 PE**	S/.	1.45	0.00%	-2.03%	-1.36%	9.85%	73.68%	5,218	1.43	0.00	2.68	1,245.89	Mining	3.09%
▲ PML PE**	US\$	0.10	11.76%	11.76%	9.20%	-45.71%	63.16%	10,482	1.44	0.00	-	25.06	Mining	2.12%
▼ RELAPAC1 PE**	S/.	0.11	-5.26%	-3.57%	3.85%	-14.29%	100.00%	8,902	0.69	0.00	-	267.78	Industrial	2.12%
▼ SCCO PE**	US\$	34.22	-1.92%	-2.51%	15.03%	17.43%	73.68%	3,422	1.42	5.97	18.20	26,454.08	Mining	2.14%
▲ SIDERC1 PE**	S/.	0.59	1.72%	3.51%	11.32%	22.15%	100.00%	1,758	1.44	17.30	6.41	215.92	Industrial	1.43%
▲ TV PE**	US\$	0.18	2.89%	1.71%	22.76%	-40.07%	84.21%	2,444	1.72	0.00	-	144.92	Mining	2.93%
- UNACEMC1 PE**	S/.	2.20	0.00%	0.00%	-3.93%	-14.03%	63.16%	270	0.56	0.00	10.59	1,192.11	Industrial	3.00%
▲ VOLCABC1 PE**	S/.	0.45	0.45%	-4.26%	9.76%	-36.62%	100.00%	22,949	1.45	3.03	-	2,031.52	Mining	5.90%
- NEXAPEC1 PE**	S/.	3.28	0.00%	-0.61%	5.81%	-10.65%	42.11%	6,843	1.13	0.00	17.16	1,292.71	Mining	1.56%

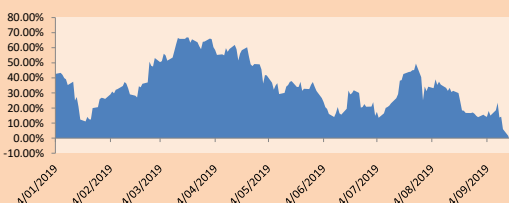
Quantity of shares: 26
Source: Bloomberg, Economatika
* Bloomberg Industry Classification System
** PER is used in the stock market and original currency of the instrument
*Legend: Variation 1D: 1 Day; 5D: 5 Days, 1M: 1 Month; YTD: Var.% 12/31/18 to date

Sectorial Indices

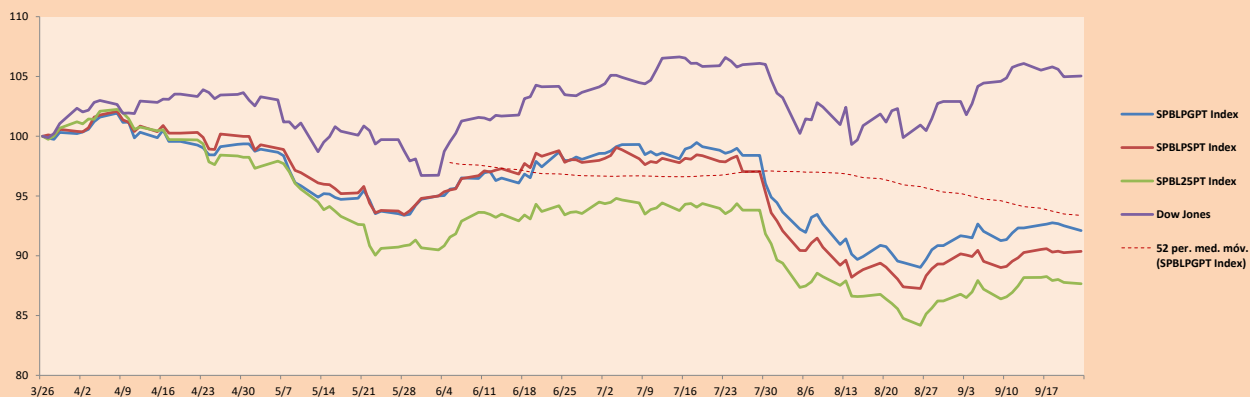
	Close	1D*	5D*	30D*	YTD*	Beta
▼ Mining Index	278.01	-0.29%	1.18%	6.13%	-2.39%	1.57
▲ Consumer Index	1,138.73	0.88%	0.33%	-1.04%	13.24%	0.33
▼ Industrial Index	201.96	-0.17%	-0.04%	0.77%	-10.99%	0.52
▼ Banking and Financial Index	1,155.06	-1.34%	-2.98%	2.20%	-3.74%	1.12
▲ Construction Index	219.65	0.25%	0.42%	-0.39%	-10.67%	0.47
- Services Index	530.64	0.00%	0.43%	4.63%	33.46%	0.22
▲ Juniors Index	17.14	4.70%	-4.41%	-5.36%	-41.78%	0.34
- Electric Index	518.03	0.00%	0.43%	4.62%	33.45%	0.22

*Legend: Variation 1D: 1 Day; 5D: 5 Days, 1M: 1 Month; YTD: Var.% 12/31/18 to date

Correlation Graph of Returns of Mining Index against Metallic Index of London (3 months)



Indices (6 months)



Source: Bloomberg

Capital Market Laboratory Coordinator: Economist Bruno Bellido Anicama
Collaboration: Juan Carlos Figueroa, Alonso Butter, Jeanpiere León y Manuel Muñoz Najara
e-mail: pulsobursatil@ulima.edu.pe
facebook: www.facebook.com/pulsobursatil.ul
Phone number : 4376767 Annex: 35340

The content of this document is just for informational purposes. The information and opinions expressed should not be consider as recommendations for future decisions. Under any circumstances, the Capital Market Laboratory of University of Lima will be responsible for the use of the statements in this document.

PULSO BURSÁTIL

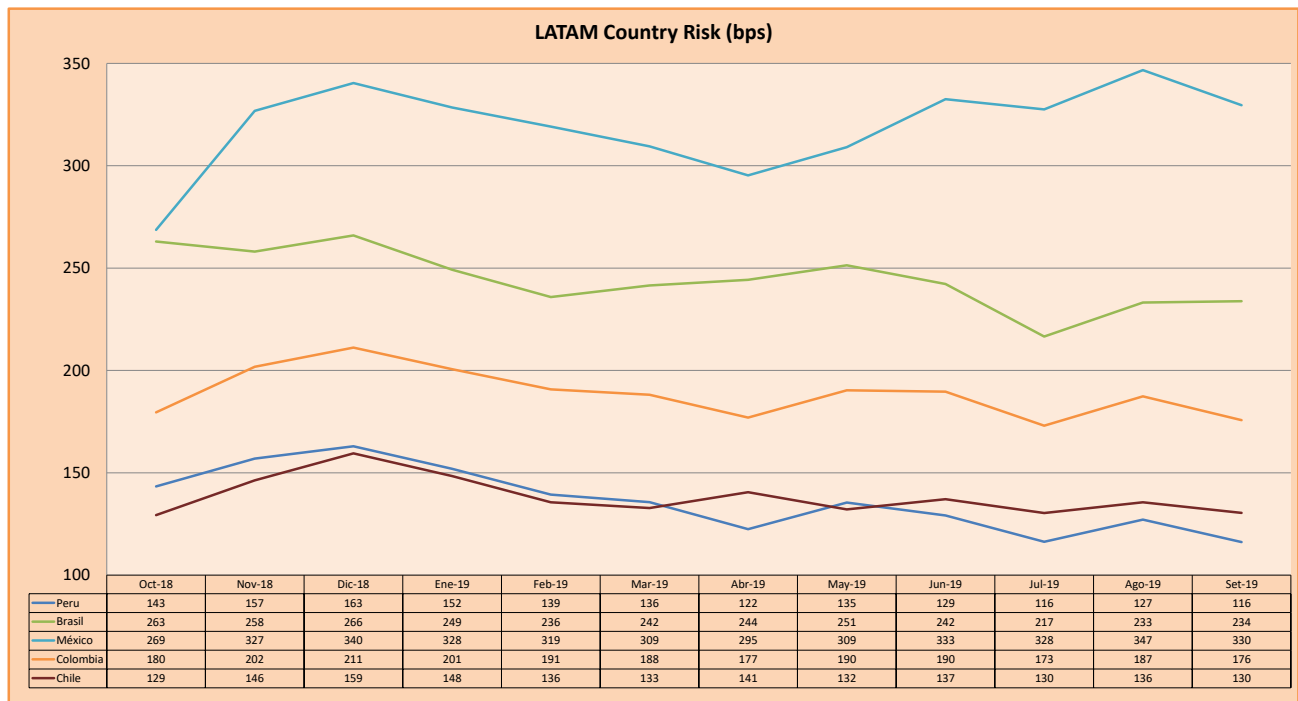
SOVEREIGN RATING

RISK RATINGS			
Moody's	S&P	Fitch	
Aaa	AAA	AAA	Prime
Aa1	AA+	AA+	High credit quality
Aa2	AA	AA	
Aa3	AA-	AA-	
A1	A+	A+	Medium-high grade, with low credit risk
A2	A	A	
A3	A-	A-	
Baa1	BBB+	BBB+	Moderate Credit Risk
Baa2	BBB	BBB	
Baa3	BBB-	BBB-	
Ba1	BB+	BB+	It has speculative elements and it is subject to substantial credit risk
Ba2	BB	BB	
Ba3	BB-	BB-	
B1	B+	B+	It is considered speculative and it has high credit risk
B2	B	B	
B3	B-	B-	
Caa1	CCC+	CCC	Bad credit conditions and it is subject to high credit risk
Caa2	CCC		
Caa3	CCC-		
Ca	CC	DDD	Very close to default or in default
C	C		
	D		

Source: Bloomberg

Latin America Credit Rating			
Clasificadora de riesgo			
Country	Moody's	Fitch	S&P
Peru	A3	BBB+	BBB+
Mexico	A3	BBB	BBB+
Venezuela	C	WD	SD
Brazil	Ba2	BB-	BB-
Colombia	Baa2	BBB	BBB-
Chile	A1	A	A+
Argentina	Caa2 +	CC	CCC-
Panama	Baa1	BBB	BBB+

Source: Bloomberg



Source: BCRP

Capital Market Laboratory Coordinator: Economist Bruno Bellido Anicama
Support: Juan Carlos Figueroa, Alonso Butters, Jeanpierre León y Manuel Muñoz Najjar
e-mail: pulsobursatil@ulima.edu.pe
facebook: www.facebook.com/pulsobursatil.ul
Phone number : 4376767 Annex: 35340

The content of this document is just for informational purposes. The information and opinions expressed should not be consider as recommendations for future decisions. Under any circumstances, the Capital Market Laboratory of University of Lima will be responsible for the use of the statements in this document.