



PULSO BURSÁTIL

Lima, Sep 25, 2019

MILA

Main Indices	Close	1 D	5 D	1 M	YTD	Market Cap. (US\$ bill)
▲ IPISA (Chile)	5,006.24	0.11%	0.04%	7.69%	-1.94%	143.30
▲ IGPA (Chile)	25,199.43	0.08%	0.03%	6.61%	-2.89%	179.87
▲ IGBC (Colombia)	13,008.40	0.45%	-0.07%	6.86%	16.73%	99.72
▲ COLCAP (Colombia)	1,596.35	0.33%	-0.06%	6.05%	20.39%	84.93
▲ S&P/BVL (Perú)*	19,391.80	0.11%	-0.59%	3.11%	0.21%	87.92
▲ S&P/BVL SEL (Perú)	503.26	0.07%	-0.31%	3.01%	-1.77%	67.95
▲ S&P/BVL LIMA 25	24,299.97	0.16%	-0.71%	2.99%	-8.33%	82.55
▲ IPC (México)	43,014.08	-0.20%	-0.13%	7.91%	3.30%	273.25
▼ S&P MILA 40	605.40	-0.46%	-2.16%	6.26%	-0.53%	252.74

* Market Cap. Of the last price Legend: Variation 1D: 1 day, 5D: 5 days, 1M: 1 Month; YTD: Var%/12/31/18 to date

Equity

Largest gains	Exchange	Amt.	Price	▲ %
WMT	Lima	USD	118.20	9.56
VICONTO	Santia.	CLP	25.98	4.97
CEMARGOS	Colomb.	COP	7680.00	3.92
VOLCABC1	Lima	PEN	0.46	3.37

Largest losses	Exchange	Amt.	Price	▼ %
SCHWAGER	Santia.	CLP	0.46	-6.50
PEHUENCHE	Santia.	CLP	1799.90	-5.27
CONCONCRET	Colomb.	COP	450.00	-4.26
ISA	Colomb.	COP	19060.00	-2.76

Per Turnover

Exchange	Amount (US\$)
FALABELLA	26,533,773
CHILE	14,012,808
CMPC	9,908,945
COPEC	9,352,228
BCI	6,359,523

Per Volume

Exchange	Volume
CHILE	98,864,962
ORO BLANCO	54,894,254
BSANTANDER	42,697,632
SCHWAGER	29,245,947
VAPORES	26,048,822

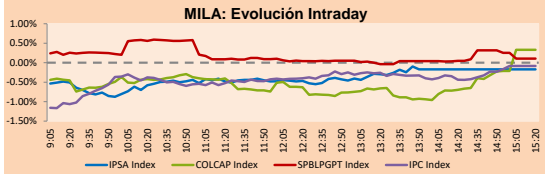
MILA

Peru: The general BVL index ended today's session with a positive result of +0.11%. The index maintains a positive trend in local currency of + 0.21%, while the adjusted yield in dollars amounts to + 0.86%. Then, the S&P / BVL Peru SEL varied by +0.07%, while the S & P / BVL LIMA 25 rose + 0.16%. The affected PEN spot S / 3.3509. Headline: BCR: Increase of property tax must affect homes and buildings.

Chile: The IPSA index closed today with a positive yield of + 0.11%. The sectors with the best results were Materials (+1.79%) and Finance (+0.38%). On the other hand, the values with the highest results of the day were Sociedad Química y Minera (+ 2.08%) and CAP SA (+ 1.77%). Headline: Acciona launches 16 challenges to Chilean startups to develop solutions in all its business units.

Colombia: The COLCAP index closed today with a positive yield of + 0.33%. The sectors with the highest results were Industrial (+ 1.74%) and Materials (+ 1.71%). On the other hand, the values with the best returns of the day were Cementos Argos SA (+ 3.92%) and Avianca Holdings SA (+ 3.73%). Headline: President Duque announces delivery to the UN of evidence of Maduro's support for Colombian armed groups.

Mexico: The MEXBOL index closed today with a negative return of -0.20%. The sectors with the worst results were Finance (-1.70%) and Industries (-1.41%). On the other hand, the values with the worst returns were Genera SAB de CV (-4.52%) and Beclé SAB de CV (-3.49%). Headline: Thomas Cook's bankruptcy could subtract US \$ 23M from the tourism industry in Mexico.

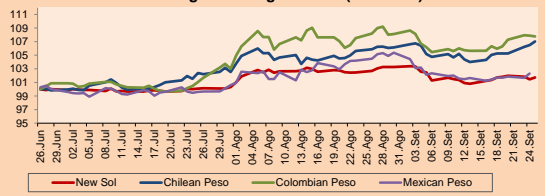


Source: Bloomberg

Currency	Price	1D*	5D*	30 D*	YTD*
▲ New Sol (PEN)	3,350.9	0.27%	0.01%	-0.93%	-0.54%
▲ Chilean Peso (CLP)	727.65	0.50%	1.68%	1.09%	4.91%
▼ Colombian Peso (COP)	3,431.52	-0.11%	1.71%	-0.38%	5.59%
▲ Mexican Peso (MXN)	19.57	0.62%	0.87%	-1.82%	-0.43%

* Legend: Variation 1D: 1 day, 5D: 5 days, 1M: 1 Month; YTD: Var%/12/31/18 to date

MILA: Foreign Exchange Indices (3 months)

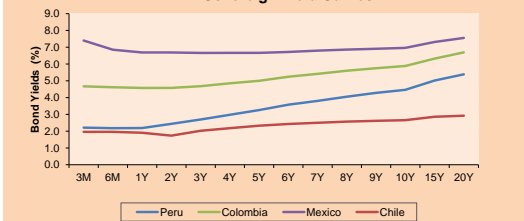


Base: 26/06/19=100 Source: Bloomberg

Fixed Income

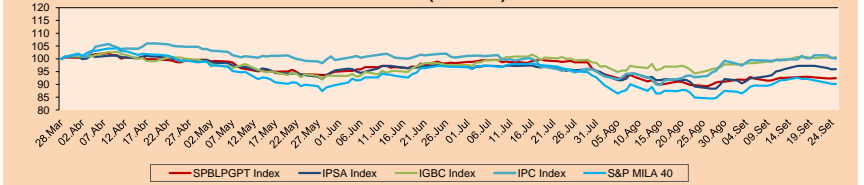
		Bid Yield (%)	Ask Yield (%)	Duration	
PERU 4.125 08/25/2027	USD	112.661	2.38	2.34	6.81
PERU 7.35 07/21/25	USD	127.682	2.27	2.23	4.86
PERU 8.75 11/21/33	USD	166.578	2.97	2.95	9.47
PERU 6.55 03/14/37	USD	147.886	3.03	3.01	11.38
PERU 5.625 11/18/2050	USD	147.843	3.20	3.19	17.59
CHILE 2.25 10/30/22	USD	100.508	2.12	2.04	2.95
CHILE 3.875 08/05/20	USD	101.558	2.16	1.89	0.84
CHILE 3.625 10/30/2042	USD	111.05	2.97	2.96	16.04
COLOM 11.75 02/25/20	USD	103.628	3.12	2.47	0.41
COLOM 11.85 03/09/28	USD	162.647	3.33	3.28	6.12
COLOM 10.375 01/28/33	USD	160.3	4.45	4.26	8.56
COLOM 7.375 09/18/37	USD	142.572	4.04	4.01	11.37
COLOM 6.125 01/18/41	USD	130.443	4.00	3.98	13.10
MEX 4 10/02/23	USD	105.663	2.54	2.48	3.64
MEX5.55 01/45	USD	120.611	4.227	4.207	14.67

MILA: Sovereign Yield Curves



Source: Bloomberg

MILA: Stock Indices (6 months)

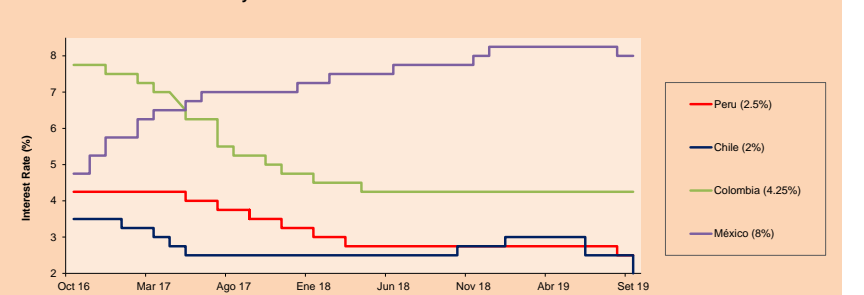


Base: 29/03/19=100 Source: Bloomberg

ETFs

	Curr.	Close	1D	5D	30 D	YTD	Exchange
▲ iShares MSCI All Peru Caped Index Fund	USD	34.59	0.23%	0.03%	5.33%	-0.75%	NYSE Arca
▼ Global X MSCI Colombia	USD	37.1	-0.56%	-2.65%	7.26%	-8.69%	Cboe BZX
▼ iShares MSCI Mexico Capped	USD	12.86	-0.08%	-1.72%	5.58%	17.42%	NYSE Arca
▼ iShares MSCI Emerging Markets	USD	43.01	-0.35%	-0.83%	9.44%	6.56%	NYSE Arca
▲ Vanquard FTSE Emerging Markets	USD	41.18	-0.07%	-1.34%	4.89%	6.23%	NYSE Arca
▼ iShares FTSE Emerging Markets	USD	40.67	0.10%	-1.22%	4.21%	9.05%	NYSE Arca
▼ iShares Core MSCI Emerging Markets	USD	49.45	-0.12%	-1.24%	4.79%	5.93%	NYSE Arca
▲ iShares JP Morgan Emerging Markets Bonds	USD	57.27	0.19%	-0.93%	2.30%	3.63%	Cboe BZX
▼ Morgan Stanley Emerging Markets Domestic	USD	6.63	-0.15%	-0.30%	0.76%	14.31%	New York

MILA: Policy Rate



Source: Bloomberg

Capital Market Laboratory Coodinator: Economist Bruno Bellido Anicam
Collaboration: Juan Carlos Figueroa, Alonso Butters, Jeanpiere León y Manuel Muñoz Najar
e-mail: pulsohorsatil@ulima.edu.pe
facebook: www.facebook.com/pulsohorsatil.ul
Phone number : 4376767 Annex: 35340



PULSO BURSÁTIL

WORLD

Main Indices	Close	1 D*	5 D*	1 M*	YTD*	Market Cap. (US\$ Mill.)
▲ Dow Jones (USA)	26,970.71	0.61%	-0.65%	5.24%	15.62%	7,448,094
▲ Standard & Poor's 500 (USA)	2,984.87	0.62%	-0.73%	4.84%	19.07%	25,629,517
▲ NASDAQ Composite (USA)	8,077.38	1.05%	-1.22%	4.20%	21.73%	12,393,099
▼ Stoxx EUROPE 600 (Europe)	387.59	-0.58%	-0.47%	4.37%	14.79%	9,477,399
▼ DAX (Germany)	12,234.18	-0.59%	-1.25%	5.36%	15.87%	1,040,037
▼ FTSE 100 (United Kingdom)	7,289.99	-0.02%	-0.33%	2.75%	8.35%	1,580,334
▼ CAC 40 (France)	5,583.80	-0.79%	-0.68%	4.82%	18.03%	1,561,916
▼ IBEX 35 (Spain)	9,085.30	-0.36%	0.59%	5.04%	6.39%	518,321
▲ MSCI AC Asia Pacific Index	159.22	0.01%	0.19%	4.49%	8.53%	18,220,218
▲ HANG SENG (Hong Kong)	25,945.35	-1.28%	-3.02%	1.03%	0.39%	2,358,918
▼ SHANGHAI SE Comp. (China)	2,855.43	-1.03%	-1.01%	3.21%	18.51%	4,810,263
▼ NIKKEI 225 (Japan)	22,020.15	-0.36%	0.09%	8.68%	10.02%	3,397,509
▲ BOVESPA (Brazil)	104,481.00	0.58%	-0.05%	6.98%	18.88%	764,413
▲ Merval (Argentina)	28,212.41	1.41%	-6.18%	6.12%	-6.87%	16,418

*Legend: Variation 1D: 1 Day; 5D: 5 Days; 1M: 1 Month; YTD: Var.% 12/31/18 to date

Equity

Alemania (Acciones del DAX Index)

Largest gains	Curr.	Price	▲%	Exchange	Largest losses	Curr.	Price	▼%	Exchange
SIE GY	EUR	95.93	0.46	Xetra	WDI GY	EUR	145.75	-2.38	Xetra
VOW3 GY	EUR	153.88	0.44	Xetra	LHA GY	EUR	14.175	-2.28	Xetra
VNA GY	EUR	44.75	0.27	Xetra	FME GY	EUR	61.96	-2.12	Xetra
BAYN GY	EUR	66.07	0.17	Xetra	SAP GY	EUR	106.7	-1.55	Xetra

Europe (Stocks from STOXX EUROPE 600)

Largest gains	Curr.	Price	▲%	Exchange	Largest losses	Curr.	Price	▼%	Exchange
MT NA	EUR	13.12	2.66	EN Amsterdam	SRT3 GY	EUR	167.6	-3.84	Xetra
HMSO LN	GBP	279.7	2.57	Londres	DOM SS	SEK	74.86	-3.73	Stockholm
IMB LN	GBP	2065.5	2.25	Londres	TGS NO	NOK	231.7	-3.68	Oslo
OSR GY	EUR	38.8	2.24	Xetra	AKERBP NO	NOK	246.8	-3.44	Oslo

Global Overview:

United States:

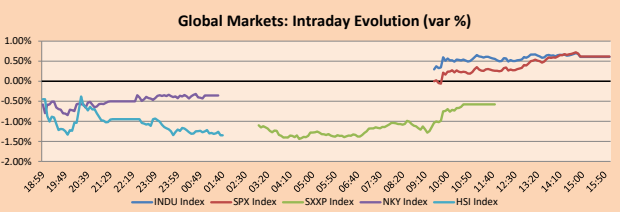
The US markets closed the day on the rise, recovering from yesterday's fall caused by the threat of impeachment President Trump, and, on the other hand, driven by the surprising house sales data, which grew 18.0% annually in August, explain by low interest rates, for example, the 30-year fixed rate fell 120 basis points throughout the year 3.73%. In corporate news, Nike Inc's (+ 4.16%) was one of the shares with the best performance in the session, after the company reported a growth of 22% to 1.68 billion dollars in its Chinese unit, as well as internet sales and applications that skyrocketed 42%. On the other hand, the CEO of Philip Morris (+ 5.20%) resigned in the midst of the scandal caused by the report of the federal drug commission on vapers and the impact they would cause on people's health, in addition, the company reported that has just terminated its talks with Altria Group (+ 0.42%) to merge for a total value of 187 billion dollars, and that in replacement of this measure, both companies will concentrate their efforts on the joint venture they maintain on the launch of a new type of smoke-free vaper.

Europe:

The European market culminated the day today on the downside, being dragged by its main index the Euro Stoxx 0.58%, the fall was expected to be greater due to the impeachment of Donald Trump, but after the same president said that the Trade agreement with China could occur earlier than planned. The entire eurozone had spent almost all day gripped by the fear of a world recession, after the Democrats began an impeachment process to try to dismiss the president of the United States. To this political panorama of the United States, there was a greater uncertainty about the United Kingdom leaving the European Union after the Supreme Court ruled that the English Prime Minister, Boris Johnson, had illegally suspended parliament. In addition, the United Kingdom faces fundamental decisions about the regulatory regime it wants after Brexit and maintains London's status as a financial center. According to the director of international policy and Brexit at the UK Finance commercial agency, Connor Lawlor, said his organization will continue to work closely with the government and regulators to achieve the necessary rules and laws to minimize possible interruptions to customers. The pound fell around 1% and the euro broke the barrier of 1.10 dollars per euro, falling to 1.09.

Asia:

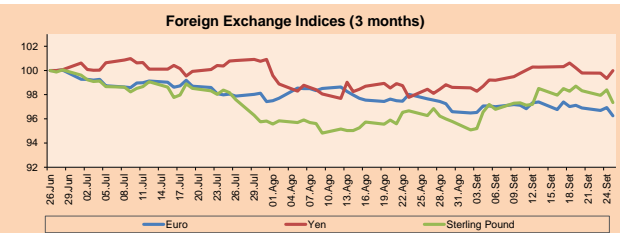
The Asian market ended the day with a negative result. The most representative exchanges in Asia / Pacific had the following results, Nikkei down by -0.36%, Hang Seng at -1.28% and ASX 200 at -0.57%. Investors are waiting for the events in the United States after the House of Representatives president, Nancy Pelosi, announces a formal investigation of the political trial on President Donald Trump. For that reason, he publishes the complete transcript of the controversial call with the Ukrainian leader, Volodymyr Zelensky. In other news, the Swiss market supervisor said he would file a criminal complaint against the Chinese conglomerate HNA Group for an alleged "serious violation" of the disclosure rules on a participation he once had in the tax-free group. Meanwhile, the Reserve Bank of New Zealand reduced its reference rate by 1%, after a higher rate cut than expected in August. The companies with today's results were SUMCO Corp. (-3.41%) by the Nikkei 225 index of Japan and Sino Biopharmaceutical (-5.34%) from the Hang Seng index of China.



Source: Bloomberg

Currency	Price	1 D*	5 D*	1 M*	YTD*
▼ Euro	1.0943	-0.70%	-0.79%	-1.43%	-4.57%
▲ Yen	107.7700	0.65%	-0.63%	1.55%	-1.75%
▼ Sterling Pound	1.2353	-1.07%	-0.95%	1.11%	-3.14%
▲ Yuan	7.1315	0.21%	0.64%	-0.28%	3.68%
▼ Hong Kong Dollar	7.8391	-0.02%	0.11%	-0.07%	0.09%
▼ Brazilian Real	4.1480	-0.42%	0.90%	-0.21%	7.06%
▲ Argentine Peso	57.0636	0.31%	0.97%	3.19%	51.49%

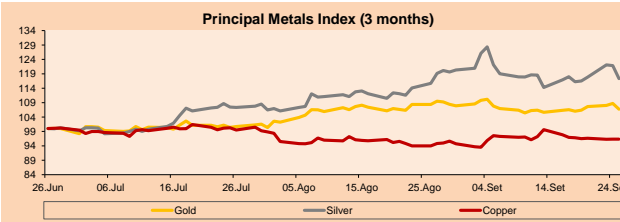
*Legend: Variation 1D: 1 Day; 5D: 5 Days; 1M: 1 Month; YTD: Var.% 12/31/18 to date



Base: 26/06/19=100
Source: Bloomberg

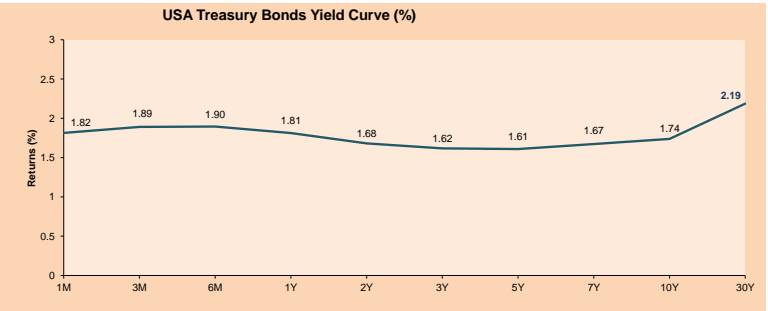
Commodities	Close	1 D*	5 D*	1 M*	YTD*
▼ Oro (US\$ Oz. T) (LME)	1,503.95	-1.83%	0.67%	-1.52%	17.27%
▼ Plata (US\$ Oz. T) (LME)	17.92	-3.69%	0.91%	1.43%	15.03%
▼ Cobres (US\$ TM) (LME)	5,753.25	0.00%	-0.46%	2.50%	-3.29%
▼ Zinc (US\$ TM) (LME)	2,296.75	0.00%	-1.10%	1.94%	-8.80%
▼ Petróleo WTI (US\$ Barril) (NYM)	56.66	-1.10%	-2.38%	5.91%	17.50%
▼ Estano (US\$ TM) (LME)	16,483.00	0.00%	-1.12%	3.63%	-15.56%
▼ Plomo (US\$ TM) (LME)	2,042.75	0.00%	-0.72%	-1.32%	-1.78%
▲ Azúcar #11 (US\$ Libra) (NYB-ICE)	12.66	2.01%	4.89%	1.44%	-3.73%
▲ Cacao (US\$ TM) (NYB-ICE)	2,469.00	1.23%	2.83%	10.32%	0.04%
▲ Café Arábica (US\$ TM) (NYB-ICE)	100.95	1.82%	0.60%	3.54%	-11.72%

*Legend: Variación 1D: 1 Día; 5D: 5 Días; 1M: 1 Mes; YTD: Var.% 31/12/17 a la fecha



Base: 26/06/19=100
Source: Bloomberg

ETFs	Curr.	Close	1D	5D	30 D	YTD	Exchange
SPDR S&P 500 ETF TRUST	USD	297.62	0.59%	-0.70%	3.62%	20.75%	NYSE Arca
ISHARES MSCI EMERGING MARKET	USD	41.18	-0.07%	-1.34%	4.89%	6.23%	NYSE Arca
ISHARES IBOXX HIGH YLD CORP	USD	87.23	-0.10%	-0.27%	0.72%	11.41%	NYSE Arca
FINANCIAL SELECT SECTOR SPDR	USD	28.09	0.83%	-1.00%	7.15%	19.74%	NYSE Arca
VANECK GOLD MINERS	USD	28.43	-3.59%	2.93%	-4.08%	34.80%	NYSE Arca
ISHARES RUSSELL 2000 ETF	USD	154.10	1.10%	-1.20%	5.18%	16.21%	NYSE Arca
SPDR GOLD SHARES	USD	141.83	-1.85%	0.80%	-1.64%	16.97%	NYSE Arca
ISHARES 20+ YEAR TREASURY BO	USD	141.47	-1.46%	1.33%	-2.51%	18.36%	NASDAQ GM
INVESTCO QQQ TRUST SERIES 1	USD	190.08	1.12%	-1.07%	3.05%	23.97%	NASDAQ GM
ISHARES NASDAQ BIOTECHNOLOGY	USD	102.13	-0.28%	-2.15%	-0.93%	6.07%	NASDAQ GM
ENERGY SELECT SECTOR SPDR	USD	60.43	0.17%	-1.56%	8.51%	8.15%	NYSE Arca
PROSHARES ULTRA VIX ST FUTUR	USD	25.83	-3.55%	6.69%	-24.03%	68.40%	NYSE Arca
UNITED STATES OIL FUND LP	USD	11.80	-0.84%	-2.48%	5.55%	22.15%	NYSE Arca
ISHARES MSCI BRAZIL ETF	USD	41.96	0.70%	-1.53%	7.89%	11.24%	NYSE Arca
SPDR S&P OIL & GAS EXP & PR	USD	23.08	0.13%	-4.26%	10.82%	-12.18%	NYSE Arca
UTILITIES SELECT SECTOR SPDR	USD	64.59	-0.06%	2.01%	4.66%	24.90%	NYSE Arca
ISHARES US REAL ESTATE ETF	USD	93.00	0.08%	0.54%	2.09%	26.84%	NYSE Arca
SPDR S&P BIOTECH ETF	USD	79.28	-0.63%	-4.24%	-1.14%	10.50%	NYSE Arca
ISHARES IBOX INVESTMENT GRA	USD	126.76	-0.66%	0.65%	-1.02%	15.03%	NYSE Arca
ISHARES JPMORGAN USD EMERGI	USD	113.15	-0.29%	-0.27%	-0.33%	12.40%	NASDAQ GM
REAL ESTATE SELECT SECT SPDR	USD	39.17	-0.10%	0.03%	1.26%	28.94%	NYSE Arca
ISHARES CHINA LARGE-CAP ETF	USD	40.18	0.35%	-1.95%	3.32%	3.86%	NYSE Arca
CONSUMER STAPLES SPDR	USD	60.85	0.07%	0.54%	1.41%	22.12%	NYSE Arca
VANECK JR GOLD MINERS	USD	38.91	-4.59%	4.99%	-5.56%	28.76%	NYSE Arca
SPDR BBG BARC HIGH YIELD BND	USD	108.92	-0.06%	-0.21%	0.77%	12.21%	NYSE Arca
VANGUARD REAL ESTATE ETF	USD	92.83	0.19%	0.49%	2.38%	27.60%	NYSE Arca
GRAYSCALE BITCOIN TRUST BTC	USD	10.20	-7.78%	-18.97%	-21.60%	157.25%	OTC US



Source: Bloomberg

Capital Market Laboratory Coordinator: Economist Bruno Bellido Anicama
Collaboration: Juan Carlos Figueroa, Alonso Butters, Jeanpierre León y Manuel Muñoz Najar
e-mail: pulsobursatil@ulima.edu.pe
facebook: www.facebook.com/pulsobursatilulima
Phone number: 4376767 Annex: 35340



PULSO BURSÁTIL

LIMA

Stocks

Ticker	Currency	Price	1D*	5D*	30D*	YTD*	Frequency	Volume (US\$)	Beta	Dividend Yield (%)	Price Earning	Market Cap. (M US\$)	Economic Sector*	Index Weight
▼ ALICORC1 PE**	S/.	9.26	-0.43%	-1.49%	-1.49%	-4.86%	100.00%	16,353	0.57	2.59	18.74	2,355.16	Industrial	3.53%
▼ ATACOCB1 PE**	S/.	0.19	-0.54%	0.54%	-1.07%	-42.55%	84.21%	19,434	1.31	0.00	5.02	52.16	Mining	1.02%
- BACKUSI1 PE**	S/.	23.92	0.00%	-0.21%	2.97%	22.52%	73.68%	927	0.34	0.00	7.92	9,696.01	Industrial	0.82%
▲ BAP PE**	US\$	209.60	1.50%	-1.64%	4.23%	-2.86%	94.74%	281,606	1.28	2.88	-	16,718.00	Diverse	5.82%
▼ BVN PE**	US\$	15.17	-2.13%	3.20%	4.26%	-5.43%	78.95%	487,654	1.70	0.76	-	4,181.38	Mining	5.88%
▲ CASAGRC1 PE**	S/.	3.14	0.64%	0.64%	-0.63%	-22.35%	100.00%	8,129	0.44	0.40	21.54	78.93	Agricultural	1.31%
▼ BBVAC1 PE**	S/.	3.27	-0.30%	-0.91%	0.62%	-5.76%	100.00%	7,550	0.57	4.22	12.92	5,743.12	Finance	2.85%
- CORAREI1 PE**	S/.	0.68	0.00%	0.00%	9.68%	2.41%	94.74%	1,522	1.01	9.02	3.62	327.48	Industrial	1.72%
▼ CPACASC1 PE**	S/.	5.80	-0.85%	0.87%	3.57%	-10.08%	94.74%	19,965	0.58	6.50	32.22	738.61	Industrial	2.38%
▼ CVERDEC1 PE**	US\$	18.35	-0.81%	-4.43%	4.86%	-10.20%	94.74%	26,192	0.90	2.34	140.08	6,423.53	Mining	5.25%
▼ ENGEPEC1 PE**	S/.	2.45	0.00%	-0.81%	4.26%	31.02%	73.68%	7,344	0.70	0.00	13.44	2,075.54	Public Services	1.44%
- ENDISPC1**	S/.	6.42	0.00%	0.47%	3.88%	25.10%	89.47%	13,411	0.66	3.53	10.47	1,223.43	Public Services	0.98%
▼ FERREY1 PE**	S/.	2.06	-0.96%	-1.90%	1.98%	-12.56%	100.00%	279,362	0.79	8.53	7.20	599.81	Diverse	4.90%
- GRAMONC1 PE**	S/.	1.63	0.00%	0.00%	1.24%	-18.09%	47.37%	248	0.94	0.00	-	424.13	Diverse	4.05%
- IFS PE**	US\$	41.80	0.00%	0.72%	6.91%	3.36%	73.68%	25,006	0.96	0.00	11.92	4,825.71	Diverse	7.22%
▼ INRETC1 PE**	US\$	36.75	-0.81%	-0.41%	-3.54%	31.02%	94.74%	2,793	0.71	0.93	30.57	3,778.17	Diverse	5.28%
- LUSURC1 PE**	S/.	16.00	0.00%	-0.93%	8.38%	52.92%	94.74%	77,828	0.65	0.00	12.81	3,225.11	Public Services	1.81%
- MINSUR1 PE**	S/.	1.45	0.00%	-2.03%	0.00%	9.85%	68.42%	1,044	1.43	0.00	2.69	1,247.53	Mining	3.09%
- PML PE**	US\$	0.10	0.00%	23.81%	19.54%	-40.57%	68.42%	11,370	1.44	0.00	-	27.44	Mining	2.12%
- RELAPAC1 PE**	S/.	0.11	0.00%	-7.89%	0.96%	-16.67%	100.00%	13,677	0.71	0.00	-	260.68	Industrial	2.12%
- SCCO PE**	US\$	34.05	0.00%	-2.94%	14.30%	16.85%	73.68%	1,027	1.42	0.00	18.11	26,322.65	Mining	2.14%
- SIDERC1 PE**	S/.	0.59	0.00%	3.51%	11.32%	22.15%	89.47%	1,761	1.44	0.00	6.41	216.20	Industrial	1.43%
- TV PE**	US\$	0.17	0.00%	5.00%	20.00%	-43.43%	89.47%	2,181	1.72	0.00	-	136.77	Mining	2.93%
- UNACEMC1 PE**	S/.	2.20	0.00%	0.00%	-3.93%	-14.03%	57.89%	270	0.56	0.00	10.59	1,193.67	Industrial	3.00%
▲ VOLCABC1 PE**	S/.	0.46	3.37%	-4.17%	13.58%	-35.21%	100.00%	92,671	1.44	2.97	-	2,041.48	Mining	5.90%
- NEXAPEC1 PE**	S/.	3.28	0.00%	0.00%	5.81%	-10.65%	47.37%	14,760	1.13	0.00	17.18	1,294.41	Mining	1.56%

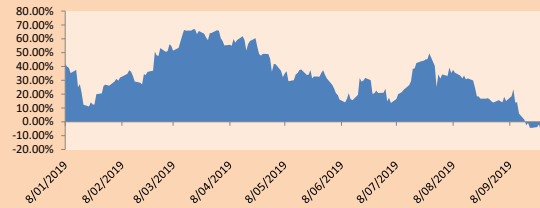
Quantity of shares: 26
 Source: Bloomberg, Económica
 * Bloomberg Industry Classification System
 ** PER is used in the stock market and original currency of the instrument
 *Legend: Variation 1D: 1 Day; 5D: 5 Days, 1M: 1 Month; YTD: Var.% 12/31/18 to date

Sectorial Indices

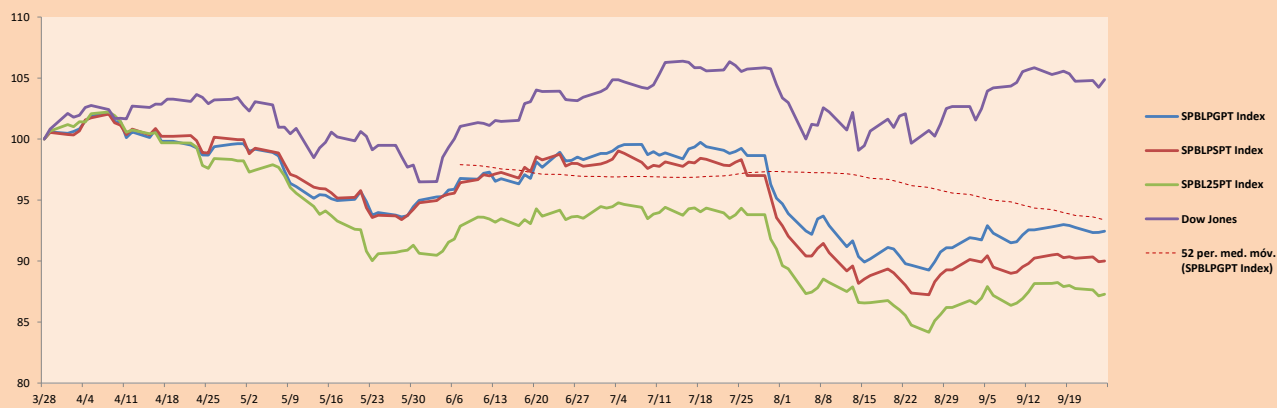
	Close	1D*	5D*	30D*	YTD*	Beta
▼ Mining Index	278.31	-0.62%	-0.24%	7.42%	-2.29%	1.56
▼ Consumer Index	1,128.99	-0.41%	-0.56%	-1.76%	12.27%	0.32
▼ Industrial Index	200.68	-0.44%	-0.08%	1.27%	-11.56%	0.51
▲ Banking and Financial Index	1,165.78	1.58%	-1.40%	3.00%	-2.85%	1.13
▼ Construction Index	219.08	-0.22%	0.87%	0.83%	-10.90%	0.47
- Services Index	527.23	0.00%	0.11%	4.75%	32.60%	0.22
▲ Juniors Index	17.82	0.28%	7.87%	-2.20%	-39.47%	0.34
- Electric Index	514.71	0.00%	0.11%	4.75%	32.60%	0.22

*Legend: Variation 1D: 1 Day; 5D: 5 Days, 1M: 1 Month; YTD: Var.% 12/31/18 to date

Correlation Graph of Returns of Mining Index against Metallic Index of London (3 months)



Indices (6 months)



Source: Bloomberg

Capital Market Laboratory Coordinator: Economist Bruno Bellido Anicama
 Collaboration: Juan Carlos Figueroa, Alonso Butter, Jeanpiere León y Manuel Muñoz Najar
 e-mail: pulsobursatil@ulima.edu.pe
 facebook: www.facebook.com/pulsobursatil.ul
 Phone number : 4376767 Annex: 35340

The content of this document is just for informational purposes. The information and opinions expressed should not be considered as recommendations for future decisions. Under any circumstances, the Capital Market Laboratory of University of Lima will be responsible for the use of the statements in this document.

PULSO BURSÁTIL

SOVEREIGN RATING

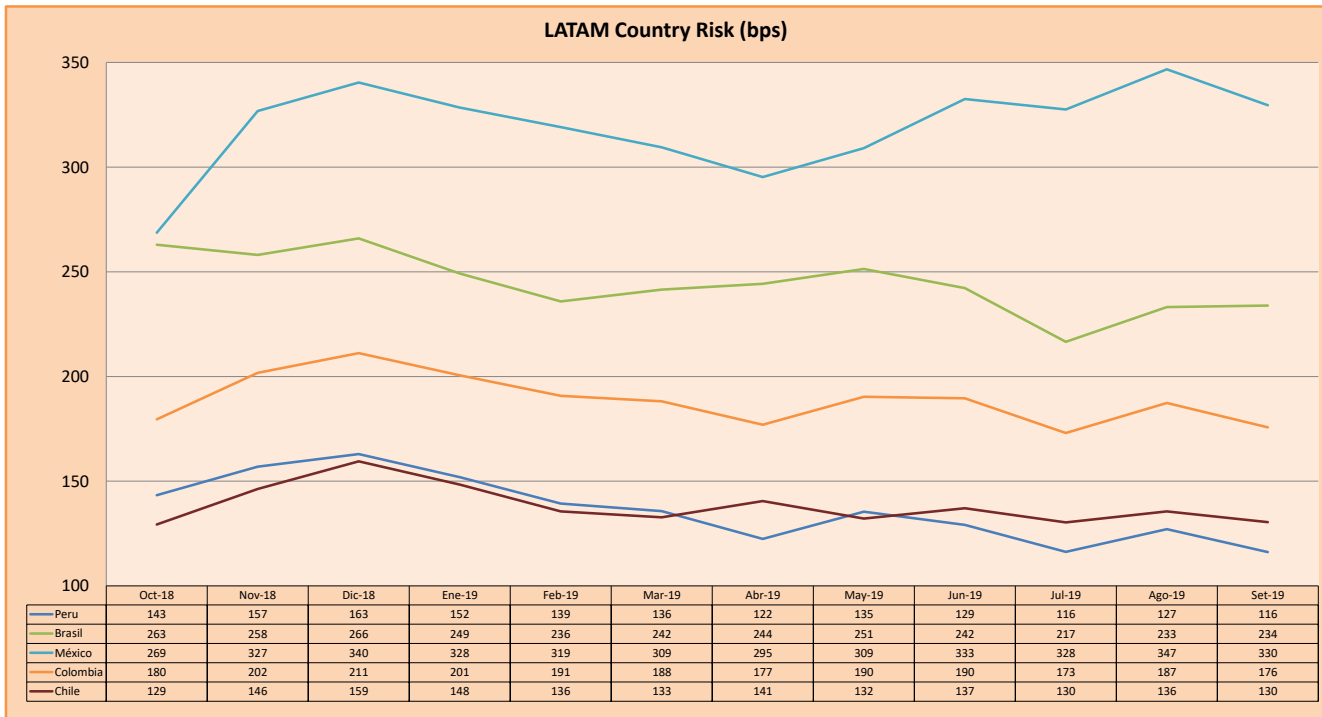
RISK RATINGS

Moody's	S&P	Fitch	
Aaa	AAA	AAA	Prime
Aa1	AA+	AA+	High credit quality
Aa2	AA	AA	
Aa3	AA-	AA-	
A1	A+	A+	Medium-high grade, with low credit risk
A2	A	A	
A3	A-	A-	
Baa1	BBB+	BBB+	Moderate Credit Risk
Baa2	BBB	BBB	
Baa3	BBB-	BBB-	
Ba1	BB+	BB+	It has speculative elements and it is subject to substantial credit risk
Ba2	BB	BB	
Ba3	BB-	BB-	
B1	B+	B+	It is considered speculative and it has high credit risk
B2	B	B	
B3	B-	B-	
Caa1	CCC+		Bad credit conditions and it is subject to high credit risk
Caa2	CCC	CCC	
Caa3	CCC-	CCC	
Ca	C		Very close to default or in default
		DDD	
C	D	DD D	

Source: Bloomberg

Latin America Credit Rating			
Clasificadora de riesgo			
Country	Moody's	Fitch	S&P
Peru	A3	BBB+	BBB+
Mexico	A3	BBB	BBB+
Venezuela	C	WD	SD
Brazil	Ba2	BB-	BB-
Colombia	Baa2	BBB	BBB-
Chile	A1	A	A+
Argentina	Caa2 +	CC	CCC-
Panama	Baa1	BBB	BBB+

Source: Bloomberg



Source: BCRP

Capital Market Laboratory Coordinator: Economist Bruno Bellido Anicama
Support: Juan Carlos Figueroa, Alonso Butters, Jeanpiere León y Manuel Muñoz Najar
e-mail: pulsobursatil@ulima.edu.pe
facebook: www.facebook.com/pulsobursatil.ul
Phone number : 4376767 Annex: 35340

The content of this document is just for informational purposes. The information and opinions expressed should not be considered as recommendations for future decisions. Under any circumstances, the Capital Market Laboratory of University of Lima will be responsible for the use of the statements in this document.