



PULSO BURSÁTIL

Lima, Sep 26, 2019

MILA

Main Indices	Close	1 D	5 D	1 M	YTD	Market Cap. (US\$ bill)
▲ IPSA (Chile)	5,026.19	0.40%	-0.86%	8.87%	-1.55%	143.41
▲ IGPA (Chile)	25,287.35	0.35%	-0.75%	7.63%	-2.55%	179.80
▲ IGBC (Colombia)	13,033.76	0.19%	0.53%	5.76%	16.96%	99.22
▲ COLCAP (Colombia)	1,601.43	0.32%	0.46%	5.42%	20.78%	94.52
▲ S&P/BVL (Perú)*	19,630.64	1.23%	0.71%	4.84%	1.45%	87.22
▲ S&P/BVL SEL (Perú)	508.14	0.97%	0.58%	4.17%	-0.82%	67.93
▲ S&P/BVL LIMA 25	24,455.39	0.64%	-0.18%	4.37%	-7.74%	81.91
▼ IPC (México)	42,984.75	-0.07%	-0.08%	7.24%	3.23%	271.14
▲ S&P MILA 40	605.76	0.06%	-1.82%	6.66%	-0.47%	252.40

* Market Cap. Of the last price Legend: Variation 1D: 1 day, 5D: 5 days, 1M: 1 Month; YTD: Var%/12/31/18 to date

Equity

Largest gains	Exchange	Amt.	Price	▲ %
FALABELLA	Santia.	25,727,023		
CHILE	Santia.	11,423,560		
CMPC	Santia.	10,720,870		
SONDA	Santia.	9,149,636		
SOM-B	Santia.	7,222,512		

Largest losses	Exchange	Amt.	Price	▼ %
MIRL	Lima	USD	0.10	-9.52
SOPROCAL	Santia.	CLP	260.00	-7.14
ESVAL-C	Santia.	CLP	0.02	-5.56
DUNCANFOX	Santia.	CLP	950.00	-5.00

Per Turnover

Exchange	Amount (US\$)
Santia.	25,727,023
Santia.	11,423,560
Santia.	10,720,870
Santia.	9,149,636
Santia.	7,222,512

Per Volume

Exchange	Volume
Santia.	125,263,157
Santia.	80,534,055
Santia.	58,863,021
Santia.	48,893,036
Santia.	45,439,135

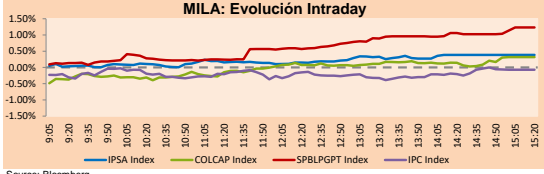
MILA

Peru: The General BVL index ended today's session with a positive result of +1.23%. The index maintains a positive trend in local currency of +1.45%, while the adjusted yield in dollars amounts to +1.95%. Then, the S&P / BVL Peru SEL varied by +0.97%, while the S&P / BVL LIMA 25 rose +0.64%. The PEN spot reached 5 / 3.3620. Headline: Peru is the third most exposed country in the region to the trade war between China and the US, according to Citibank

Chile: The IPSA index closed today with a positive yield of +0.42%. The sectors with the best results were Energy (+1.90%) and Industrial (+1.85%). On the other hand, the values with the highest results of the day were Enel Chile SA (+2.54%) and Ripley Corporación SA (+2.37%). Headline: President of the AFP Association resigns from his post: "I regret the stir that my statements have caused."

Colombia: The COLCAP index closed the day today with a positive yield of +0.32%. The sectors with the highest results were Industrial (+6.55%) and Energy (+0.32%). On the other hand, the values with the best returns of the day were Avianca Holdings SA (+7.20%) and Concretos SA (+4.44%). Headline: President Duque reveals the evidence he presented to the UN against Maduro

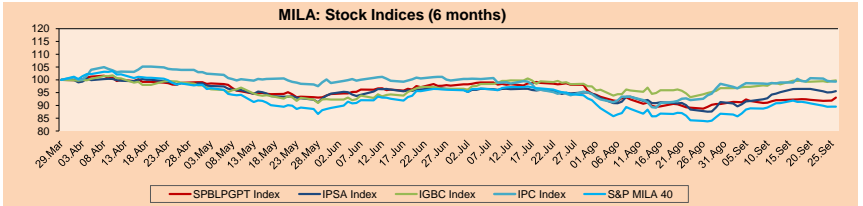
Mexico: The MEXBOL index closed the day today with a negative return of -0.07%. The sectors with the worst results were Health (-2.06%) and Communications Services (-1.08%). On the other hand, the values with the worst returns were Grupo Televisa SA (-6.50%) and Genomma Labs Internacional SAB (-2.06%). Headline: The Mexican economy fell 0.6% in July, the biggest contraction since 2009.



Source: Bloomberg

Currency	Price	1D*	5D*	30D*	YTD*
▲ New Sol (PEN)	3,3839	0.98%	0.86%	-0.31%	0.44%
▼ Chilean Peso (CLP)	727.13	-0.07%	1.60%	0.66%	4.83%
▲ Colombian Peso (COP)	3,448.38	0.49%	1.88%	-0.62%	6.11%
▲ Mexican Peso (MXN)	19.67	0.55%	1.12%	-1.55%	0.12%

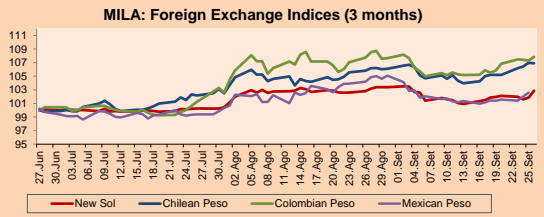
*Legend: Variation 1D: 1 day, 5D: 5 days, 1M: 1 Month; YTD: Var%/12/31/18 to date



Base: 01/04/19=100 Source: Bloomberg

ETFs

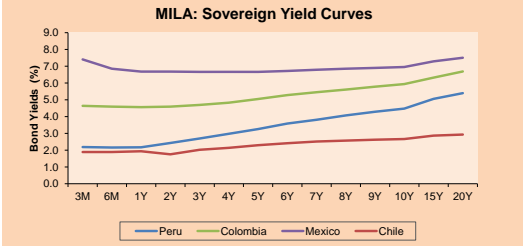
	Curr.	Close	1D	5D	30 D	YTD	Exchange
▲ iShares MSCI All Peru Caped Index Fund	USD	34.93	0.98%	1.04%	5.40%	0.23%	NYSE Arca
▲ Global X MSCI Colombia	USD	37.28	0.49%	-2.02%	6.91%	-8.25%	Cboe BZX
▲ iShares MSCI Mexico Capped	USD	12.87	0.08%	-1.42%	5.75%	17.51%	NYSE Arca
▲ iShares MSCI Emerging Markets	USD	42.85	-0.37%	-1.02%	8.40%	6.17%	NYSE Arca
▼ Vanuand FTSE Emerging Markets	USD	41.17	-0.02%	-0.96%	4.68%	6.21%	NYSE Arca
▼ iShares FTSE Emerging Markets	USD	40.65	-0.05%	-0.65%	4.10%	9.00%	NYSE Arca
▼ iShares Core MSCI Emerging Markets	USD	49.45	0.00%	-0.80%	4.63%	5.93%	NYSE Arca
▼ iShares JP Morgan Emerging Markets Bonds	USD	57.17	-0.17%	-0.83%	2.09%	3.45%	Cboe BZX
- Morgan Stanley Emerging Markets Domestic	USD	6.63	0.00%	-0.75%	0.15%	14.31%	New York



Base: 27/06/19=100 Source: Bloomberg

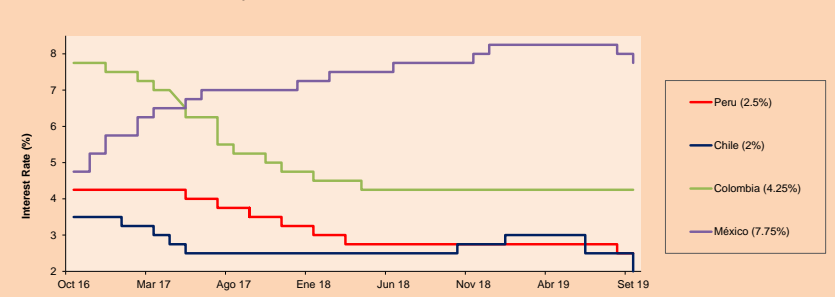
Fixed Income

	Bid Yield (%)	Ask Yield (%)	Duration
PERU 4.125 08/25/2027	USD	112.582	2.40
PERU 7.35 07/21/25	USD	127.552	2.29
PERU 8.75 11/21/33	USD	166.341	2.99
PERU 6.55 03/14/37	USD	147.433	3.04
PERU 5.625 11/18/2050	USD	147.672	3.21
CHILE 2.25 10/30/22	USD	100.53	2.12
CHILE 3.875 08/05/20	USD	101.586	2.16
CHILE 3.625 10/30/2042	USD	110.65	2.99
COLOM 11.75 02/25/20	USD	103.618	2.98
COLOM 11.85 03/09/28	USD	162.906	3.30
COLOM 10.375 01/28/33	USD	159.638	4.49
COLOM 7.375 09/18/37	USD	142.875	4.02
COLOM 6.125 01/18/41	USD	130.756	3.99
MEX 4 10/02/23	USD	105.644	2.55
MEX 5.55 01/45	USD	120.995	4.209



Source: Bloomberg

MILA: Policy Rate



Source: Bloomberg

Capital Market Laboratory Coodinator: Economist Bruno Bellido Anicam
Collaboration: Juan Carlos Figueroa, Alonso Butters, Jeanpiere León y Manuel Muñoz Najar
e-mail: pulsobursatil@ulima.edu.pe
facebook: www.facebook.com/pulsobursatil.ul
Phone number : 4376767 Annex: 35340



PULSO BURSÁTIL

LIMA

Stocks

Ticker	Currency	Price	1D*	5D*	30D*	YTD*	Frequency	Volume (US\$)	Beta	Dividend Yield (%)	Price Earning	Market Cap. (M US\$)	Economic Sector*	Index Weight
▼ ALICORC1 PE**	S/.	9.25	-0.11%	0.00%	-1.60%	-4.96%	105.26%	115,090	0.57	2.59	18.72	2,329.69	Industrial	3.53%
ATACOCB1 PE**	S/.	0.19	0.00%	0.00%	-1.07%	-42.55%	84.21%	19,244	1.32	0.00	4.97	51.65	Mining	1.02%
- BACKUSI1 PE**	S/.	23.92	0.00%	0.00%	2.97%	22.52%	73.68%	1,064	0.34	0.00	7.92	9,601.45	Industrial	0.82%
▲ BAP PE**	US\$	211.60	0.95%	-0.49%	4.90%	-1.93%	100.00%	414,000	1.28	2.85	-	16,877.53	Diverse	5.82%
▲ BVN PE**	US\$	15.54	2.44%	5.71%	4.37%	-3.12%	84.21%	97,717	1.70	0.74	-	4,283.36	Mining	5.88%
▲ CASAGRC1 PE**	S/.	3.16	0.64%	1.28%	0.00%	-21.86%	105.26%	5,444	0.44	0.40	21.68	78.66	Agricultural	1.31%
▼ BBVAC1 PE**	S/.	3.25	-0.61%	-0.91%	0.00%	-6.34%	105.26%	5,344	0.57	4.24	12.84	5,652.33	Finance	2.85%
▼ CORAREI1 PE**	S/.	0.67	-1.47%	-2.90%	8.06%	0.90%	100.00%	5,940	1.01	9.15	3.56	323.69	Industrial	1.72%
- CPACASC1 PE**	S/.	5.80	0.00%	-0.85%	4.13%	-10.08%	100.00%	17,416	0.58	6.50	32.22	731.41	Industrial	2.38%
▼ CVERDEC1 PE**	US\$	18.00	-1.91%	-6.25%	2.86%	-11.91%	100.00%	37,880	0.90	2.38	137.40	6,301.01	Mining	5.25%
▲ INGEPEC1 PE**	S/.	2.48	1.22%	0.40%	5.53%	32.62%	78.95%	52,498	0.70	4.12	13.60	2,080.47	Public Services	1.44%
- ENDISPC1**	S/.	6.42	0.00%	0.47%	0.00%	25.10%	94.74%	43,683	0.66	3.53	10.47	1,211.50	Public Services	0.98%
▲ FERREYC1 PE**	S/.	2.12	2.91%	0.47%	3.92%	-10.02%	105.26%	369,061	0.78	8.29	7.41	611.26	Diverse	4.90%
- GRAMONC1 PE**	S/.	1.63	0.00%	0.00%	-1.21%	-18.09%	47.37%	488	0.95	0.00	-	420.00	Diverse	4.05%
▼ IFS PE**	US\$	41.50	-0.72%	0.00%	3.62%	2.61%	78.95%	84,039	0.96	4.22	11.95	4,791.08	Diverse	7.22%
- INRETC1 PE**	US\$	36.75	0.00%	-0.41%	-3.29%	31.02%	100.00%	18,897	0.70	0.93	30.87	3,778.17	Diverse	5.28%
▲ LUSURC1 PE**	S/.	16.15	0.94%	0.94%	11.70%	54.35%	100.00%	133,443	0.65	5.20	12.93	2,324.02	Public Services	1.81%
- MINSURH1 PE**	S/.	1.45	0.00%	0.00%	1.40%	9.85%	68.42%	3,472	1.43	0.00	2.66	1,235.36	Mining	3.09%
- PML PE**	US\$	0.10	0.00%	22.35%	19.54%	-40.57%	68.42%	11,370	1.44	0.00	-	27.44	Mining	2.12%
- RELAPAC1 PE**	S/.	0.11	0.00%	-7.89%	0.00%	-16.67%	105.26%	2,171	0.72	0.00	-	258.14	Industrial	2.12%
▼ SCCO PE**	US\$	33.90	-0.44%	-2.84%	13.80%	16.33%	78.95%	14,624	1.41	6.03	18.03	26,206.70	Mining	2.14%
▼ SIDERC1 PE**	S/.	0.57	-3.39%	0.00%	7.55%	18.01%	94.74%	3,369	1.44	17.91	6.20	206.84	Industrial	1.43%
▲ TV PE**	US\$	0.17	1.19%	3.03%	21.43%	-42.76%	94.74%	5,170	1.72	0.00	-	138.40	Mining	2.93%
▼ UNACEMC1 PE**	S/.	2.15	-2.27%	-2.27%	-7.33%	-15.98%	63.16%	9,297	0.56	2.42	10.34	1,155.17	Industrial	3.00%
▼ VOLCABC1 PE**	S/.	0.46	-0.22%	-4.38%	4.56%	-35.35%	105.26%	58,948	1.45	2.97	-	2,020.85	Mining	5.90%
- NEXAPEC1 PE**	S/.	3.28	0.00%	0.00%	5.81%	-10.65%	52.63%	3,877	1.13	15.82	17.02	1,281.79	Mining	1.56%

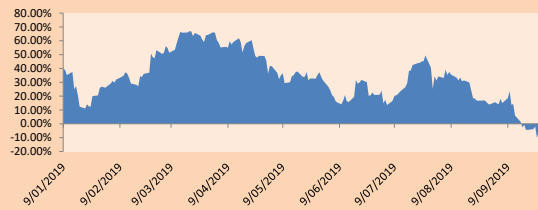
Quantity of shares: 26
 Source: Bloomberg, Económica
 * Bloomberg Industry Classification System
 ** PER is used in the stock market and original currency of the instrument
 *Legend: Variation 1D: 1 Day; 5D: 5 Days, 1M: 1 Month; YTD: Var.% 12/31/18 to date

Sectorial Indices

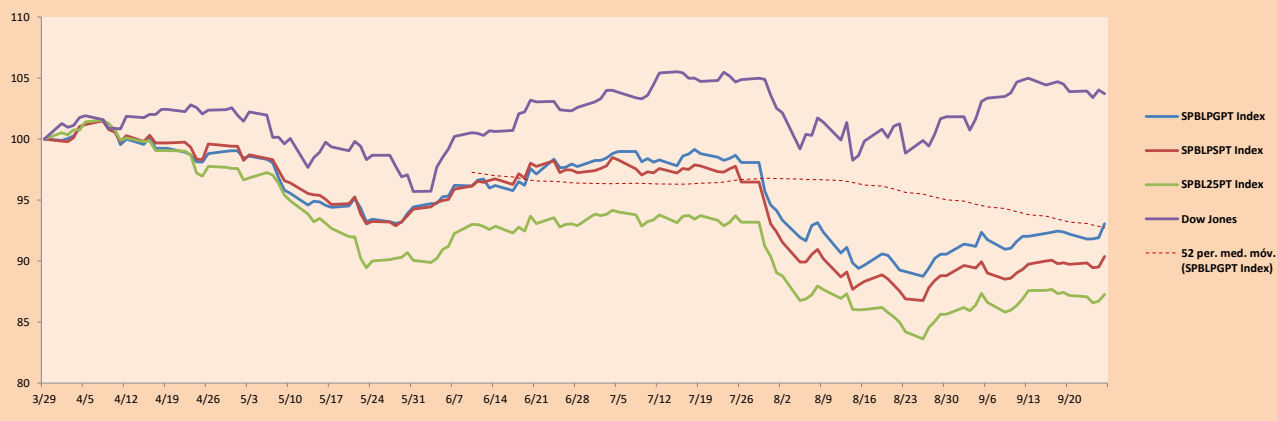
	Close	1D*	5D*	30D*	YTD*	Beta
▲ Mining Index	283.10	1.72%	1.62%	7.45%	-0.61%	1.56
▲ Consumer Index	1,133.37	0.39%	0.44%	-1.41%	12.70%	0.32
▲ Industrial Index	200.99	0.15%	-0.87%	0.74%	-11.42%	0.50
▲ Banking and Financial Index	1,185.97	1.73%	0.42%	4.24%	-1.17%	1.13
▼ Construction Index	216.87	-1.01%	-1.36%	-0.72%	-11.80%	0.44
▲ Services Index	531.95	0.90%	0.80%	5.71%	33.79%	0.23
▲ Juniors Index	17.99	0.95%	10.03%	-1.59%	-38.89%	0.36
▲ Electric Index	519.31	0.89%	0.80%	5.71%	33.78%	0.23

*Legend: Variation 1D: 1 Day; 5D: 5 Days, 1M: 1 Month; YTD: Var.% 12/31/18 to date

Correlation Graph of Returns of Mining Index against Metallic Index of London (3 months)



Indices (6 months)



Source: Bloomberg

Capital Market Laboratory Coordinator: Economist Bruno Bellido Anicama
 Collaboration: Juan Carlos Figueroa, Alonso Butter, Jeanpiere León y Manuel Muñoz Najar
 e-mail: pulsobursatil@ulima.edu.pe
 facebook: www.facebook.com/pulsobursatil.ul
 Phone number : 4376767 Annex: 35340

The content of this document is just for informational purposes. The information and opinions expressed should not be consider as recommendations for future decisions. Under any circumstances, the Capital Market Laboratory of University of Lima will be responsible for the use of the statements in this document.



PULSO BURSÁTIL

SOVEREIGN RATING

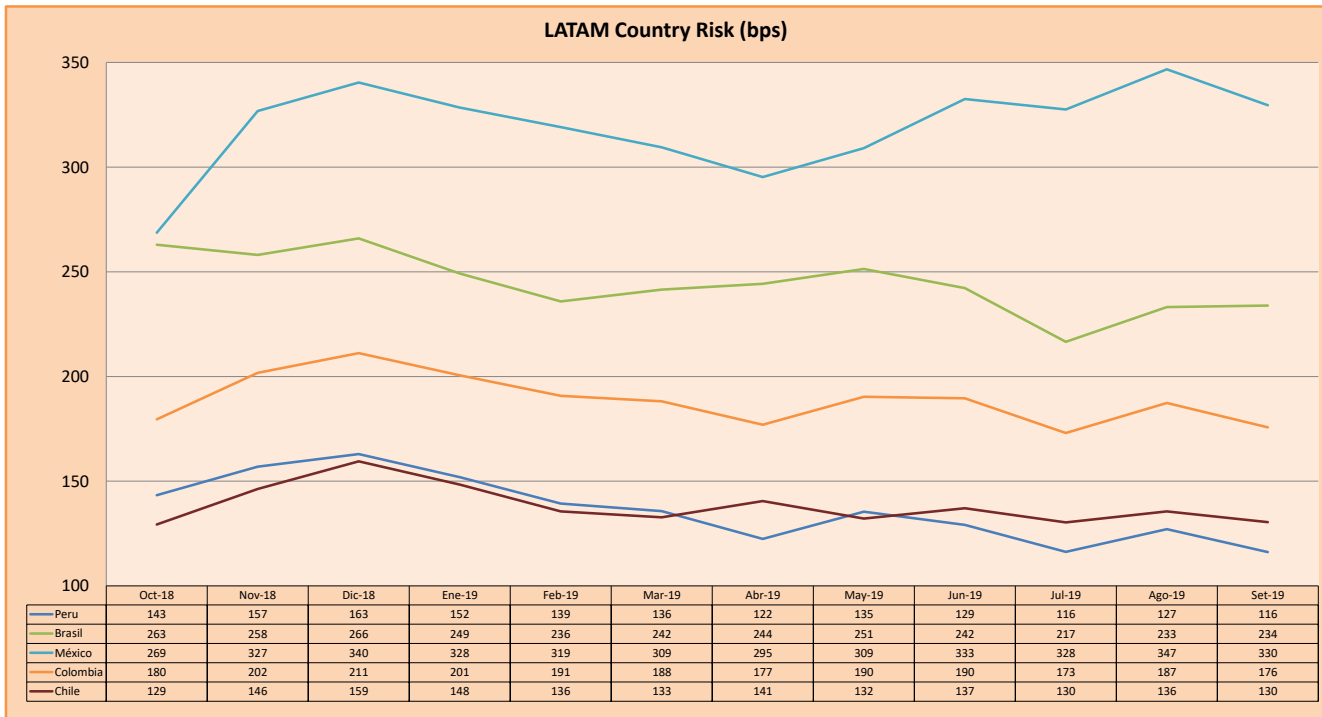
RISK RATINGS

Moody's	S&P	Fitch	
Aaa	AAA	AAA	Prime
Aa1	AA+	AA+	High credit quality
Aa2	AA	AA	
Aa3	AA-	AA-	
A1	A+	A+	Medium-high grade, with low credit risk
A2	A	A	
A3	A-	A-	
Baa1	BBB+	BBB+	Moderate Credit Risk
Baa2	BBB	BBB	
Baa3	BBB-	BBB-	
Ba1	BB+	BB+	It has speculative elements and it is subject to substantial credit risk
Ba2	BB	BB	
Ba3	BB-	BB-	
B1	B+	B+	It is considered speculative and it has high credit risk
B2	B	B	
B3	B-	B-	
Caa1	CCC+		Bad credit conditions and it is subject to high credit risk
Caa2	CCC	CCC	
Caa3	CCC-	CCC	
Ca	C		Very close to default or in default
		DDD	
C	D	DD D	

Source: Bloomberg

Latin America Credit Rating			
Clasificadora de riesgo			
Country	Moody's	Fitch	S&P
Peru	A3	BBB+	BBB+
Mexico	A3	BBB	BBB+
Venezuela	C	WD	SD
Brazil	Ba2	BB-	BB-
Colombia	Baa2	BBB	BBB-
Chile	A1	A	A+
Argentina	Caa2 +	CC	CCC-
Panama	Baa1	BBB	BBB+

Source: Bloomberg



Source: BCRP

Capital Market Laboratory Coordinator: Economist Bruno Bellido Anicama
 Support: Juan Carlos Figueroa, Alonso Butters, Jeanpiere León y Manuel Muñoz Najar
 e-mail: pulsobursatil@ulima.edu.pe
 facebook: www.facebook.com/pulsobursatil.ul
 Phone number : 4376767 Annex: 35340

The content of this document is just for informational purposes. The information and opinions expressed should not be consider as recommendations for future decisions. Under any circumstances, the Capital Market Laboratory of University of Lima will be responsible for the use of the statements in this document.