



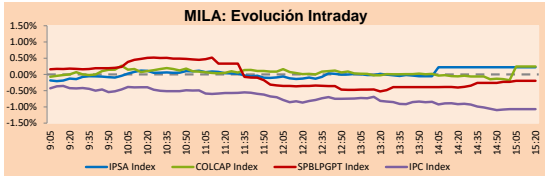
# PULSO BURSÁTIL

Lima, October 7, 2019

## MILA

Main Indexes	Close	1 D	5 D	1 M	YTD	
▲ IPSA (Chile)	5,050.95	0.21%	-0.16%	4.71%	-1.07%	145.75
▲ IGPA (Chile)	25,454.45	0.21%	0.00%	4.53%	-1.91%	182.93
▲ IGBC (Colombia)	12,976.47	0.24%	1.13%	2.12%	16.44%	98.86
▼ S&P/BVL (Perú)*	19,232.36	-0.20%	-1.89%	-0.65%	-0.61%	86.85
▼ S&P/BVL SEL (Perú)	501.36	-0.08%	-2.16%	0.18%	-2.15%	67.85
▲ S&P/BVL LIMA 25	24,459.22	0.29%	-1.87%	0.78%	-7.73%	81.66
▼ IPC (México)	42,952.29	-1.07%	-0.14%	0.57%	3.15%	276.49
▲ S&P MILA 40	609.62	1.02%	1.22%	1.38%	0.16%	256.19

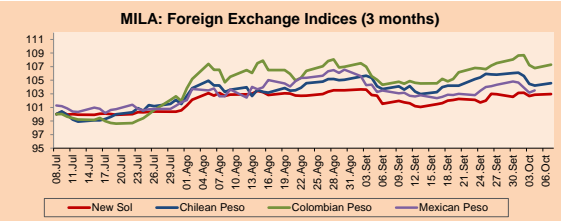
\* Market Cap. Of the last price      \*Legend: Variation 1D: 1 day; 5D: 5 days; 1M: 1 Month; YTD: Var%12/31/18 to date



Source: Bloomberg

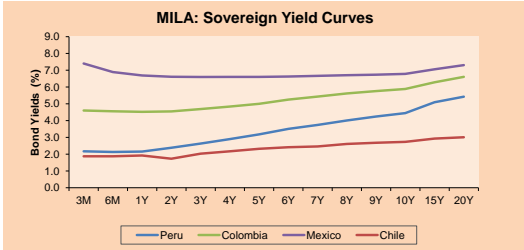
Currency	Price	1D*	5D*	30D*	YTD*
▲ New Sol (PEN)	3,382.9	0.10%	0.38%	1.22%	0.41%
▲ Chilean Peso (CLP)	718.16	0.33%	-1.41%	0.83%	3.54%
▲ Colombian Peso (COP)	3,452.48	0.48%	-0.71%	2.84%	6.24%
▲ Mexican Peso (MXN)	19.58	0.31%	-0.81%	0.22%	-0.38%

\*Legend: Variation 1D: 1 day; 5D: 5 days; 1M: 1 Month; YTD: Var%12/31/18 to date



Base: 08/07/19=100  
Source: Bloomberg

Fixed Income		Bid Yield (%)	Ask Yield (%)	Duration	
PERU 4.125 08/25/2027	USD	113.335	2.29	2.25	6.80
PERU 7.35 07/21/25	USD	127.92	2.20	2.16	4.84
PERU 8.75 11/21/33	USD	167.833	2.88	2.86	9.46
PERU 6.55 03/14/37	USD	148.874	2.96	2.94	11.38
PERU 5.625 11/18/2050	USD	150.951	3.11	3.10	17.67
CHILE 2.25 10/30/22	USD	100.782	2.03	1.95	2.92
CHILE 3.875 08/05/20	USD	101.569	2.12	1.76	0.81
CHILE 3.625 10/30/2042	USD	112.686	2.87	2.87	16.10
COLOM 11.75 02/25/20	USD	103.515	2.76	1.90	0.38
COLOM 11.85 03/09/28	USD	163.845	3.19	3.12	6.10
COLOM 10.375 01/28/33	USD	159.951	4.45	4.31	8.52
COLOM 7.375 09/18/37	USD	144.356	3.93	3.90	11.39
COLOM 6.125 01/18/41	USD	132.256	3.90	3.87	13.12
MEX 4 10/02/23	USD	106.034	2.44	2.36	3.68
MEX5.55 01/45	USD	122.501	4.18	4.102	14.74



Source: Bloomberg

Equity					
<b>Largest gains</b>	<b>Exchange</b>	<b>Amt.</b>	<b>Price</b>	<b>▲ %</b>	
SHPC1	Lima	PEN	5.30	10.88	
ETB	Colomb.	COP	260.00	8.33	
GRAMONC1	Lima	PEN	1.64	7.19	
			0.17	3.03	

Largest losses	Exchange	Amt.	Price	▼ %
Fabricato	Colomb.	COP	5.23	-9.67
COLO COLO	Santia.	CLP	195.00	-8.44
PODERC1	Lima	PEN	10.01	-5.57
CASAGRC1	Lima	PEN	3.00	-3.85

Per Turnover	Exchange	Amount (US\$)
BCOLOMBIA	Colomb.	6,646,289
BAP	Lima	6,635,506
BSANTANDER	Santia.	4,692,336
SQM-A	Santia.	3,974,440
AGUAS-A	Santia.	3,549,339

Per Volume	Exchange	Volume
BSANTANDER	Santia.	65,741,225
VAPORES	Santia.	14,686,793
CHILE	Santia.	14,042,034
COLBUN	Santia.	8,366,042
AGUAS-A	Santia.	6,550,373

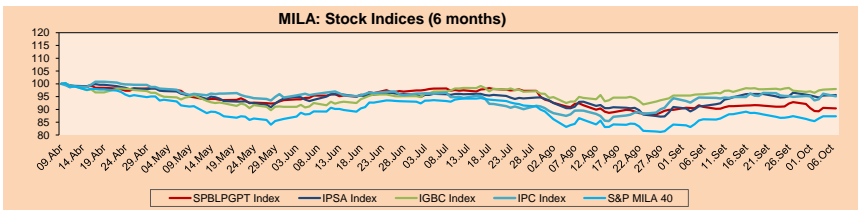
## MILA

**Peru:** The General BVL index ended today's session with a negative result of -0.20%. The index maintains a negative trend in local currency of -0.61%, while the adjusted yield in dollars amounts to -0.90%. Then, the S&P / BVL Peru SEL was reduced by -0.08%, while the S&P/BVL LIMA 25 rose + 0.29%. The PEN spot reached 5 / 3.3829. Headline: Central Bank would cut its interest rate during the fourth quarter, estimates the BCP.

**Chile:** The IPSA index closed today with a positive yield of + 0.21%. The sectors with the best results were Materials (+ 0.84%) and Energy (+ 0.74%). On the other hand, the values with the highest results of the day were Empresas CMPC SA (+ 2.39%) and Engie Energia Chile SA (+ 1.23%). Headline: Foreign direct investment registers great amount in five years.

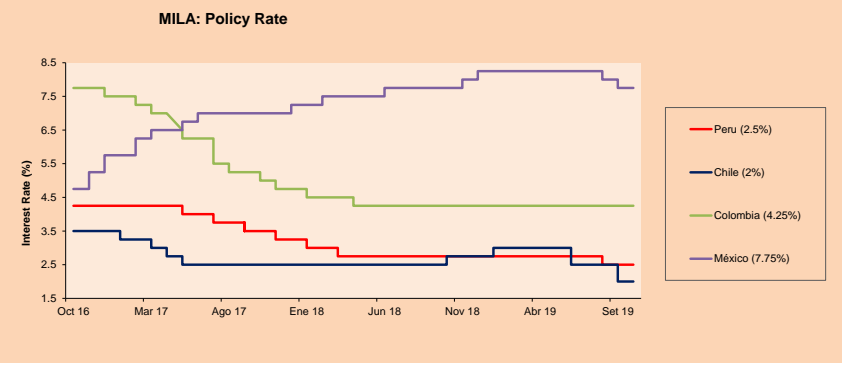
**Colombia:** The COLCAP index closed today with a positive yield of + 0.24%. The sectors with the highest results were Communication Services (+ 8.33%) and Industrial (+ 4.84%). On the other hand, the values with the best returns of the day were Empresa de Telecomunicaciones (+8.33%) and Avianca Holdings SA (+ 6.67%). Headline: Superindustry seizes 6,625 delinquents from the State that has been fined.

**Mexico:** The MEXBOL index closed the day today with a negative return of -1.07%. The sectors with the worst results were Consumer Staples (-1.62%) and Industrial (-1.07%). On the other hand, the values with the worst returns were Grupo Financiero Inbursa SAB de CV (-3.36%) and Grupo Bimbo SAB de CV (-2.24%). Headline: Mexico reset US crude oil imports after 7 months.



Base: 10/04/19=100  
Source: Bloomberg

ETFs	Curr.	Close	1D	5D	30 D	YTD	Exchange
▼ iShares MSCI All Peru Caped Index Fund	USD	34.07	-0.79%	-2.82%	-1.10%	-2.24%	NYSE Arca
▼ iShares MSCI Mexico Capped	USD	37.66	-0.87%	0.59%	3.18%	-7.31%	Cboe BZX
▼ Global X MSCI Colombia	USD	12.68	-1.71%	-0.08%	0.48%	15.78%	NYSE Arca
▼ iShares MSCI Mexico Capped	USD	43	-1.47%	0.66%	0.70%	6.54%	NYSE Arca
▼ iShares MSCI Emerging Markets	USD	40.63	-0.83%	-0.59%	-1.50%	4.81%	NYSE Arca
▼ Vanguard FTSE Emerging Markets	USD	40.15	-0.77%	-0.27%	-1.53%	7.66%	NYSE Arca
▼ iShares Core MSCI Emerging Markets	USD	48.78	-0.89%	-0.49%	-1.55%	4.49%	NYSE Arca
▼ iShares JP Morgan Emerging Markets Bonds	USD	56.73	-0.56%	-0.63%	-1.22%	2.65%	Cboe BZX
▼ Morgan Stanley Emerging Markets Domestic	USD	6.67	-0.30%	1.21%	1.85%	17.48%	New York



Source: Bloomberg

Capital Market Laboratory Coodinator: Economist Bruno Bellido Anicam  
Collaboration: Juan Carlos Figueroa, Alonso Butters, Jeanpiere León y Manuel Muñoz Najar  
e-mail: pulsohorsatil@ulima.edu.pe  
facebook: www.facebook.com/pulsohorsatil.ul  
Phone number : 4376767 Annex: 35340



# PULSO BURSÁTIL

## LIMA

### Stocks

Ticker	Currency	Price	1D*	5D*	30D*	YTD*	Frequency	Volume (US\$)	Beta	Dividend Yield (%)	Price Earning	Market Cap. (M US\$)	Economic Sector*	Index Weight
▲ ALICORC1 PE**	S/.	9.02	0.11%	-3.01%	-4.04%	-7.33%	95.00%	18,353	0.57	2.66	18.29	2,272.78	Industrial	3.53%
▲ ATACOCB1 PE**	S/.	0.19	0.00%	0.00%	6.32%	-42.55%	55.00%	1,610	#N/A N/A	0.00	4.97	51.67	Mining	1.02%
- BACKUSI1 PE**	S/.	23.70	0.00%	0.00%	0.74%	21.40%	55.00%	976	0.34	0.00	7.73	9,386.36	Industrial	0.82%
▼ BAP PE**	US\$	207.45	-0.07%	-0.74%	-2.28%	-3.86%	95.00%	6,635,506	1.28	2.91	-	16,546.52	Diverse	5.82%
▼ BVN PE**	US\$	14.53	-3.00%	-4.47%	-2.35%	-9.42%	95.00%	38,728	1.65	0.79	-	4,004.97	Mining	5.88%
▼ CASAGRC1 PE**	S/.	3.00	-3.85%	-9.37%	-4.46%	-25.82%	100.00%	5,930	0.45	0.42	20.55	74.70	Agricultural	1.31%
- BBVAC1 PE**	S/.	3.25	0.00%	0.31%	-1.52%	-6.34%	90.00%	18,155	0.49	4.24	12.84	5,654.00	Finance	2.85%
▼ CORAREI1 PE**	S/.	0.66	-1.49%	-1.49%	-1.49%	-0.60%	95.00%	21,686	0.97	9.29	3.51	317.62	Industrial	1.72%
▲ CPACASC1 PE**	S/.	5.90	2.61%	-0.51%	3.51%	-8.53%	100.00%	30,386	0.58	6.39	32.78	744.15	Industrial	2.38%
▲ CVERDEC1 PE**	US\$	17.80	1.71%	-1.11%	-3.78%	-12.89%	95.00%	23,206	0.79	2.41	135.88	6,231.00	Mining	5.25%
- INGEPEC1 PE**	S/.	2.48	0.00%	0.40%	0.00%	32.62%	75.00%	5,712	0.74	4.12	13.60	2,081.09	Public Services	1.44%
- ENDISPC1**	S/.	6.48	0.31%	0.00%	1.57%	26.27%	90.00%	3,449,461	0.65	3.50	10.57	1,223.18	Public Services	0.98%
▼ FERREYC1 PE**	S/.	1.98	-1.00%	-6.16%	-5.71%	-15.96%	100.00%	1,887,991	0.78	8.88	6.92	571.06	Diverse	4.90%
▲ GRAMONC1 PE**	S/.	1.64	7.19%	0.00%	-1.80%	-17.59%	50.00%	7,266	0.93	0.00	-	422.70	Diverse	4.05%
▲ IFS PE**	US\$	39.05	0.26%	-4.76%	-4.62%	-3.44%	85.00%	8,005	0.99	4.48	11.24	4,508.23	Diverse	7.22%
▲ INRETC1 PE**	US\$	36.25	0.42%	-0.41%	-2.82%	29.23%	95.00%	100,413	0.75	0.94	30.44	3,726.77	Diverse	5.28%
▼ LUSURC1 PE**	S/.	23.98	-0.08%	4.26%	44.94%	129.19%	95.00%	1,116,729	0.71	3.50	19.20	3,451.80	Public Services	1.81%
- MINSURH1 PE**	S/.	1.45	0.00%	0.00%	-2.03%	9.85%	55.00%	1,543	1.36	5.22	2.66	1,235.73	Mining	3.09%
- PML PE**	US\$	0.10	0.00%	0.00%	9.20%	-45.71%	55.00%	6,128	1.35	0.00	-	25.06	Mining	2.12%
▲ RELAPAC1 PE**	S/.	0.11	2.86%	-1.82%	2.86%	-14.29%	100.00%	2,492	0.79	0.00	-	265.59	Industrial	2.12%
- SCCO PE**	US\$	32.89	0.00%	-3.83%	-1.29%	12.87%	80.00%	220,814	1.31	0.00	17.49	25,425.91	Mining	2.14%
- SIDERC1 PE**	S/.	0.55	0.00%	-3.51%	-3.51%	13.87%	80.00%	14,982	1.43	0.00	5.98	199.64	Industrial	1.43%
▲ TV PE**	US\$	0.17	3.03%	0.00%	16.44%	-42.76%	85.00%	12,347	1.64	0.00	-	138.40	Mining	2.93%
- UNACEMC1 PE**	S/.	2.02	0.00%	-5.16%	-11.01%	-21.06%	60.00%	11,942	0.58	2.57	9.72	1,085.64	Industrial	3.00%
▼ VOLCABC1 PE**	S/.	0.45	-1.11%	-6.32%	-4.30%	-37.32%	100.00%	23,571	1.53	0.00	-	2,011.34	Mining	5.90%
- NEXAPEC1 PE**	S/.	3.28	0.00%	0.00%	-2.09%	-10.65%	50.00%	5,264	1.15	15.82	17.02	1,282.04	Mining	1.56%

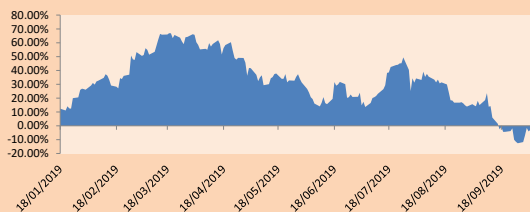
Quantity of shares: 26  
 Source: Bloomberg, Económica  
 \* Bloomberg Industry Classification System  
 \*\* PER is used in the stock market and original currency of the instrument  
 \*Legend: Variation 1D: 1 Day; 5D: 5 Days; 1M: 1 Month; YTD: Var.% 12/31/18 to date

### Sectorial Indices

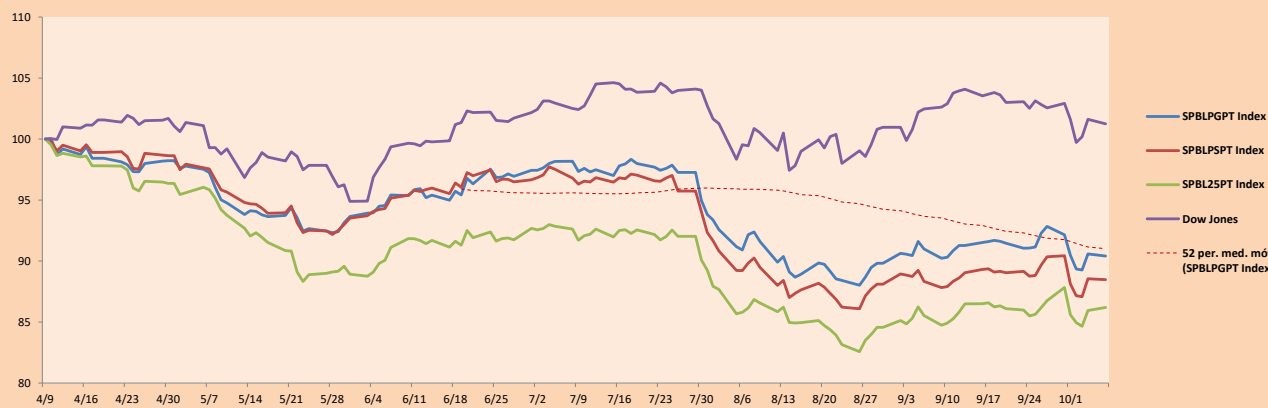
	Close	1D*	5D*	30D*	YTD*	Beta
▼ Mining Index	270.90	-1.15%	-3.46%	-0.88%	-4.89%	1.50
▲ Consumer Index	1,110.26	0.26%	-1.36%	-2.32%	10.41%	0.38
▲ Industrial Index	194.15	1.22%	-3.43%	-4.01%	-14.43%	0.50
▲ Banking and Financial Index	1,160.49	0.10%	-0.62%	-1.21%	-3.29%	1.16
▲ Construction Index	212.33	2.16%	-2.26%	-3.44%	-13.64%	0.45
▲ Services Index	609.58	0.27%	2.79%	14.12%	53.31%	0.27
▲ Juniors Index	17.10	0.12%	0.41%	-5.73%	-41.92%	0.33
▲ Electric Index	595.10	0.27%	2.79%	14.12%	53.31%	0.27

\*Legend: Variation 1D: 1 Day; 5D: 5 Days; 1M: 1 Month; YTD: Var.% 12/31/18 to date

### Correlation Graph of Returns of Mining Index against Metallic Index of London (3 months)



### Indices (6 months)



Source: Bloomberg

Capital Market Laboratory Coordinator: Economist Bruno Bellido Anicama  
 Collaboration: Juan Carlos Figueroa, Alonso Butter, Jeanpiere León y Manuel Muñoz Najar  
 e-mail: pulsobursatil@ulima.edu.pe  
 facebook: www.facebook.com/pulsobursatil.ul  
 Phone number : 4376767 Annex: 35340

The content of this document is just for informational purposes. The information and opinions expressed should not be consider as recommendations for future decisions. Under any circumstances, the Capital Market Laboratory of University of Lima will be responsible for the use of the statements in this document.

# PULSO BURSÁTIL

## SOVEREIGN RATING

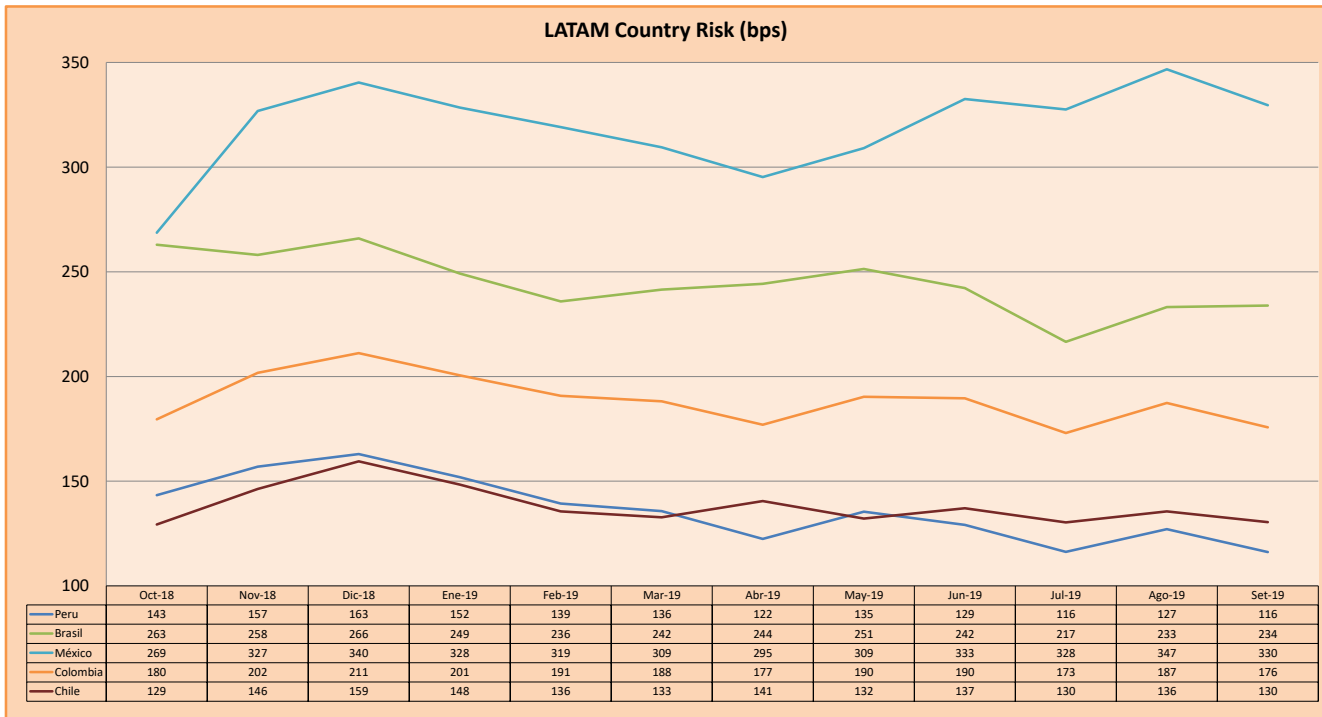
### RISK RATINGS

Moody's	S&P	Fitch	
Aaa	AAA	AAA	Prime
Aa1	AA+	AA+	High credit quality
Aa2	AA	AA	
Aa3	AA-	AA-	
A1	A+	A+	Medium-high grade, with low credit risk
A2	A	A	
A3	A-	A-	
Baa1	BBB+	BBB+	Moderate Credit Risk
Baa2	BBB	BBB	
Baa3	BBB-	BBB-	
Ba1	BB+	BB+	It has speculative elements and it is subject to substantial credit risk
Ba2	BB	BB	
Ba3	BB-	BB-	
B1	B+	B+	It is considered speculative and it has high credit risk
B2	B	B	
B3	B-	B-	
Caa1	CCC+		Bad credit conditions and it is subject to high credit risk
Caa2	CCC	CCC	
Caa3	CCC-	CCC	
Ca	C		Very close to default or in default
		DDD	
C	D	DD D	

Source: Bloomberg

Latin America Credit Rating			
Clasificadora de riesgo			
Country	Moody's	Fitch	S&P
Peru	A3	BBB+	BBB+
Mexico	A3	BBB	BBB+
Venezuela	C	WD	SD
Brazil	Ba2	BB-	BB-
Colombia	Baa2	BBB	BBB-
Chile	A1	A	A+
Argentina	Caa2 +	CC	CCC-
Panama	Baa1	BBB	BBB+

Source: Bloomberg



Source: BCRP

Capital Market Laboratory Coordinator: Economist Bruno Bellido Anicama  
Support: Juan Carlos Figueroa, Alonso Butters, Jeanpiere León y Manuel Muñoz Najar  
e-mail: pulsobursatil@ulima.edu.pe  
facebook: www.facebook.com/pulsobursatil.ul  
Phone number : 4376767 Annex: 35340

The content of this document is just for informational purposes. The information and opinions expressed should not be consider as recommendations for future decisions. Under any circumstances, the Capital Market Laboratory of University of Lima will be responsible for the use of the statements in this document.