



PULSO BURSÁTIL

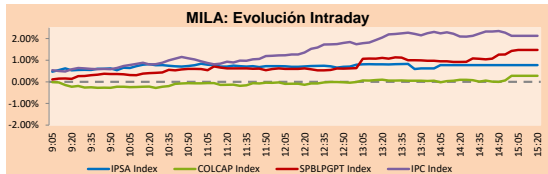
Lima, October 4, 2019

MILA

Main Indexes	Close	1 D	5 D	1 M	YTD	
▲ IPSA (Chile)	5,040.20	0.79%	-1.17%	5.94%	-1.28%	144.98
▲ IGPA (Chile)	25,400.26	0.71%	-0.93%	5.61%	-2.12%	182.34
▲ IGBC (Colombia)	12,945.26	0.31%	0.41%	2.04%	16.16%	99.27
▲ COLCAP (Colombia)	1,593.05	0.28%	0.51%	1.73%	20.15%	94.56
▲ S&P/BVL (Perú)*	19,270.23	1.47%	-2.43%	0.15%	-0.41%	85.89
▲ S&P/BVL SEL (Perú)	501.75	1.68%	-1.99%	-0.20%	-2.07%	66.77
▲ S&P/BVL LIMA 25	24,389.45	1.53%	-0.92%	0.75%	-7.99%	80.69
▲ IPC (México)	43,416.90	2.29%	1.31%	2.58%	4.27%	271.61
▲ S&P MILA 40	603.48	1.21%	-1.06%	2.64%	-0.85%	253.39

* Market Cap. Of the last price

*Legend: Variation 1D: 1 day; 5D: 5 days; 1M: 1 Month; YTD: Var%12/31/18 to date

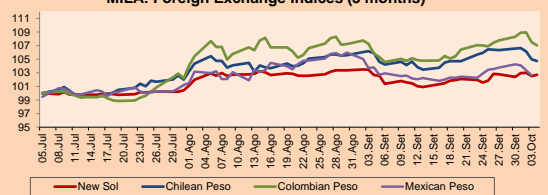


Source: Bloomberg

Currency	Price	1D*	5D*	30 D*	YTD*
▲ New Sol (PEN)	3,3795	0.18%	-0.08%	0.01%	0.31%
▼ Chilean Peso (CLP)	715.80	-0.24%	-1.51%	-1.08%	3.20%
▼ Colombian Peso (COP)	3,436.00	-0.42%	-0.69%	1.13%	5.73%
▼ Mexican Peso (MXN)	19.51	-0.71%	-0.90%	-1.05%	-0.69%

*Legend: Variation 1D: 1 day; 5D: 5 days; 1M: 1 Month; YTD: Var%12/31/18 to date

MILA: Foreign Exchange Indices (3 months)



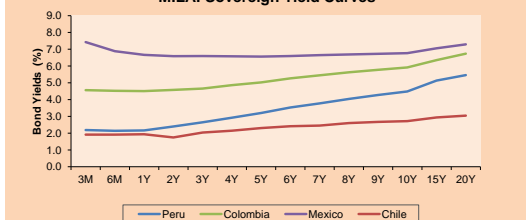
Base: 05/07/19=100

Source: Bloomberg

Fixed Income

		Bid Yield (%)	Ask Yield (%)	Duration
PERU 4.125 08/25/2027	USD	113.513	2.26	2.22
PERU 7.35 07/21/25	USD	128.064	2.18	2.14
PERU 8.75 11/21/33	USD	167.927	2.87	2.86
PERU 6.55 03/14/37	USD	149.019	2.94	2.93
PERU 5.625 11/18/2050	USD	150.202	3.10	3.09
CHILE 2.25 10/30/22	USD	100.807	2.00	1.95
CHILE 3.875 08/05/20	USD	101.586	2.09	1.76
CHILE 3.625 10/30/2042	USD	113.077	2.85	2.85
COLOM 11.75 02/25/20	USD	103.555	2.69	1.90
COLOM 11.85 03/09/28	USD	164.056	3.17	3.10
COLOM 10.375 01/28/33	USD	159.901	4.45	4.32
COLOM 7.375 09/18/37	USD	144.545	3.91	3.89
COLOM 6.125 01/18/41	USD	132.476	3.88	3.86
MEX 4 10/02/23	USD	106.132	2.42	2.33
MEX 5.55 01/45	USD	122.876	4.095	4.084

MILA: Sovereign Yield Curves



Source: Bloomberg

Equity

Largest gains	Exchange	Amt.	Price	▲ %
LUSURC1	Lima	PEN	24.00	11.63
VOLCABC1	Lima	PEN	0.45	4.65
MINEROS	Colomb.	COP	3460.00	4.33
ETB	Colomb.	COP	240.00	3.90

Per Turnover

	Exchange	Amount (US\$)
FALABELLA	Santia.	27,076,963
GRUPOSURA	Colomb.	13,048,161
CHILE	Santia.	9,122,286
AGUAS-A	Santia.	5,531,788
ECOPETROL	Colomb.	5,052,416

Largest losses	Exchange	Amt.	Price	▼ %
MIRL	Lima	USD	0.10	-5.00
PROMIGAS	Colomb.	COP	8000.00	-2.20
FERREYC1	Lima	PEN	2.00	-1.96
Enjoy	Santia.	CLP	33.99	-1.85

Per Volume

	Exchange	Volume
CHILE	Santia.	64,040,073
BSANTANDER	Santia.	32,929,889
VAPORES	Santia.	22,035,079
AGUAS-A	Santia.	10,168,307
Enjoy	Santia.	9,244,387

MILA

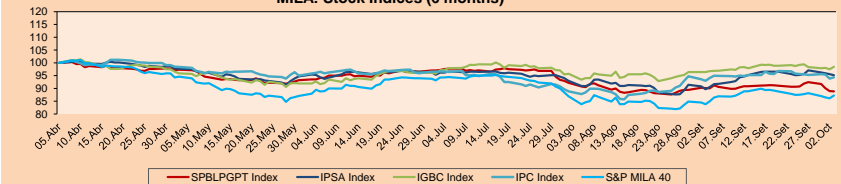
Peru: The General BVL index ended today's session with a negative result of +1.47%. The index maintains a negative trend in local currency of -0.41%, while the adjusted yield in dollars amounts to -0.72%. Then, the S&P / BVL Peru SEL varied by +1.68%, while the S & P / BVL LIMA 25 rose +1.53%. The PEN spot reached S / 3.3795. Headline: MEF: Appointment of vice minister with complications due to administrative processes.

Chile: The IPSA index closed today with a positive yield of +0.72%. The sectors with the best results were Industry (+2.24%) and Energy (+2.01%). On the other hand, the values with the highest results of the day were Plaza SA (+2.75%) and Latam Airlines Group SA (+2.44%). Headline: Engie activates investment plan for renewable projects and opens up to buy initiatives in operation

Colombia: The COLCAP index closed the day today with a positive yield of +0.28%. The sectors with the highest results were Communication Services (+3.90%) and Materials (+1.82%). On the other hand, the values with the best returns of the day were Empresa de Telecomunicaciones (+3.90%) and Cementos Argos SA (+2.71%). Headline: Two international consortia enter the final stretch through the subway of the Colombian capital.

Mexico: The MEXBOL index closed today with a positive yield of +2.29%. The sectors with the best results were Communication Services (+3.26%) and Materials (+2.94%). On the other hand, the values with the best yields were Genera SAB de CV (+5.57%) and Grupo México SAB de CV (+5.25%). Headline: Chevron acquires 40% in three Shell blocks in deep water in Mexico.

MILA: Stock Indices (6 months)



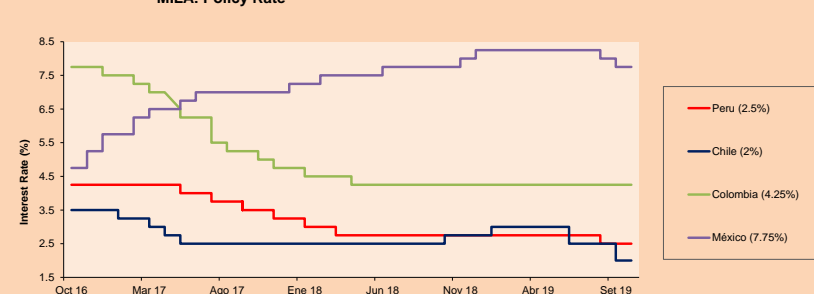
Base: 08/04/19=100

Source: Bloomberg

ETFs

	Curr.	Close	1D	5D	30 D	YTD	Exchange
▲ iShares MSCI All Peru Caped Index Fund	USD	34.34	1.00%	-1.91%	0.56%	-1.47%	NYSE Arca
▲ iShares MSCI Mexico Capped	USD	37.99	1.17%	0.90%	7.56%	-6.50%	Cboe BZX
▲ Global X MSCI Colombia	USD	12.9	1.20%	0.66%	2.34%	17.79%	NYSE Arca
▲ iShares MSCI Mexico Capped	USD	43.64	3.07%	2.61%	4.25%	8.12%	NYSE Arca
▲ iShares MSCI Emerging Markets	USD	40.97	0.44%	0.81%	0.89%	5.69%	NYSE Arca
▲ Vanguard FTSE Emerging Markets	USD	40.46	0.47%	0.80%	0.29%	8.49%	NYSE Arca
▲ iShares Core MSCI Emerging Markets	USD	49.22	0.43%	0.80%	0.84%	5.44%	NYSE Arca
▲ iShares JP Morgan Emerging Markets Bonds	USD	57.05	0.37%	0.46%	-0.11%	3.23%	Cboe BZX
▲ Morgan Stanley Emerging Markets Domestic	USD	6.69	1.36%	2.76%	3.08%	17.83%	New York

MILA: Policy Rate



Source: Bloomberg

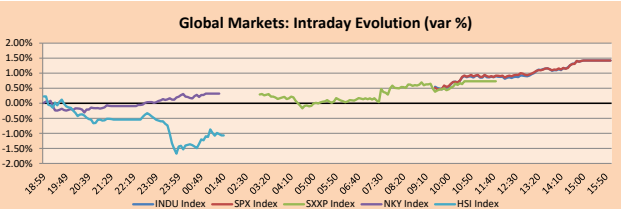
Capital Market Laboratory Coordinator: Economist Bruno Bellido Anicama
 Collaboration: Juan Carlos Figueroa, Alonso Butters, Jeanpiere León y Manuel Muñoz Najär
 e-mail: pulsobursatil@ulima.edu.pe
 facebook: www.facebook.com/pulsobursatil.ul
 Phone number : 4376767 Annex: 35340

PULSO BURSÁTIL

WORLD

Main Indices	Close	1 D*	5 D*	1 M*	YTD*	Market Cap. (US\$ Mill.)
▲ Dow Jones (USA)	26,573.72	1.42%	-0.92%	0.83%	13.92%	7,329,420
▲ Standard & Poor's 500 (USA)	2,952.01	1.42%	-0.33%	0.48%	17.76%	25,189,395
▲ NASDAQ Composite (USA)	7,982.47	1.40%	0.54%	0.07%	20.30%	12,244,846
▲ Stoxx EUROPE 600 (Europe)	380.22	0.73%	-2.95%	-0.77%	12.61%	9,280,813
▲ DAX (Germany)	12,012.81	0.73%	-2.24%	0.86%	13.77%	1,017,782
▲ FTSE 100 (United Kingdom)	7,155.38	1.10%	-3.65%	-2.13%	6.35%	1,552,451
▲ CAC 40 (France)	5,488.32	0.91%	-2.70%	-0.79%	16.02%	1,534,673
▲ IBEX 35 (Spain)	8,961.80	0.67%	-2.42%	1.19%	4.94%	509,634
▼ MSCI AC Asia Pacific Index	155.44	-0.47%	-0.95%	1.17%	5.95%	17,801,417
▼ HANG SENG (Hong Kong)	25,821.03	-1.11%	-0.85%	-3.26%	-0.10%	2,340,545
▼ SHANGHAI SE Comp. (China)	2,905.19	-0.92%	-2.41%	0.66%	16.49%	4,522,982
▲ NIKKEI 225 (Japan)	21,410.20	0.32%	-2.14%	0.99%	6.97%	3,323,245
▲ BOVESPA (Brazil)	102,551.30	1.02%	-2.40%	1.33%	16.69%	763,676
▲ Merval (Argentina)	31,816.50	4.78%	10.18%	29.00%	5.03%	17,634

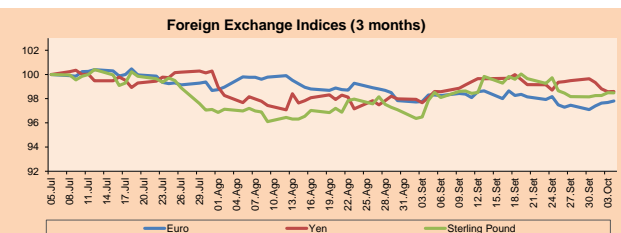
*Legend: Variation 1D: 1 Day; 5D: 5 Days; 1M: 1 Month; YTD: Var.% 12/31/18 to date



Source: Bloomberg

Currency	Price	1 D*	5 D*	1 M*	YTD*
▲ Euro	1.0979	0.13%	0.36%	-0.51%	-4.26%
▲ Yen	106.9400	0.02%	-0.91%	0.52%	-2.51%
▼ Sterling Pound	1.2331	-0.01%	0.32%	0.64%	-3.32%
- Yuan	7.1463	0.00%	0.36%	0.03%	3.92%
▼ Hong Kong Dollar	7.8395	-0.03%	-0.01%	-0.02%	0.10%
▼ Brazilian Real	4.0561	-0.62%	-2.49%	-0.95%	4.69%
▼ Argentine Peso	57.7320	-0.03%	0.71%	3.07%	53.27%

*Legend: Variation 1D: 1 Day; 5D: 5 Days; 1M: 1 Month; YTD: Var.% 12/31/18 to date

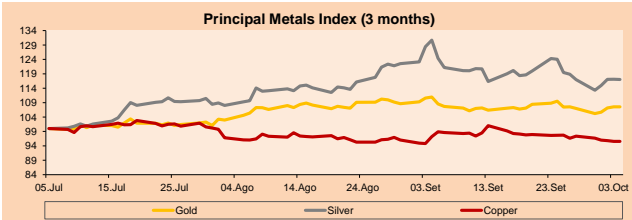


Base: 05/07/19=100

Source: Bloomberg

Commodities	Close	1 D*	5 D*	1 M*	YTD*
▼ Oro (US\$ Oz. T) (LME)	1,504.75	-0.03%	0.51%	-3.07%	17.33%
▼ Plata (US\$ Oz. T) (LME)	17.56	-0.04%	0.06%	-10.43%	13.39%
▼ Cobres (US\$ TM) (LME)	5,628.25	0.00%	-1.88%	-1.68%	-5.39%
▼ Zinc (US\$ TM) (LME)	2,335.50	0.00%	-0.60%	0.49%	-7.27%
▲ Petróleo WTI (US\$ Barril) (NYM)	52.81	0.69%	-5.54%	-5.86%	9.52%
▲ Estafío (US\$ TM) (LME)	16,452.00	0.00%	2.14%	-4.27%	-15.72%
▲ Plomo (US\$ TM) (LME)	2,125.50	0.00%	3.34%	3.90%	5.90%
▲ Azúcar #11 (US\$ Libra) (NYB-ICE)	12.76	0.16%	1.11%	5.98%	-2.97%
▲ Cacao (US\$ TM) (NYB-ICE)	2,475.00	-1.79%	-0.60%	9.08%	0.28%
▼ Café Arábica (US\$ TM) (NYB-ICE)	99.00	-2.99%	-1.88%	2.48%	-13.42%

*Legenda: Variación 1D: 1 Día; 5D: 5 Días; 1M: 1 Mes; YTD: Var.% 31/12/17 a la fecha



Base: 05/07/19=100

Source: Bloomberg

Equity

Alemania (Acciones del DAX Index)

Largest gains	Curr.	Price	▲%	Exchange	Largest losses	Curr.	Price	▼%	Exchange
MTX GY	EUR	243	2.57	Xetra	HEI GY	EUR	61.84	-1.40	Xetra
RWE GY	EUR	28.22	2.32	Xetra	DBK GY	EUR	6.48	-1.31	Xetra
DB1 GY	EUR	140.3	1.93	Xetra	BMW GY	EUR	62.39	-1.22	Xetra
HEN3 GY	EUR	90.96	1.86	Xetra	VOW3 GY	EUR	147.82	-0.89	Xetra

Europe (Stocks from STOXX EUROPE 600)

Largest gains	Curr.	Price	▲%	Exchange	Largest losses	Curr.	Price	▼%	Exchange
UTDI GY	EUR	33.6	5.00	Xetra	HSV LN	GBp	1120	-4.19	Londres
TOM NO	NOK	234.8	4.92	Oslo	MKS LN	GBp	171.85	-3.94	Londres
EVT GY	EUR	20.22	4.82	Xetra	LHA GY	EUR	13.935	-3.20	Xetra
PGN PW	PLN	4.608	4.54	Warsaw	BIRG ID	EUR	3.592	-3.02	EN Dublin

Global Overview:

United States:

The US market closed on the last day of the week on the rise, driven by the non-agricultural payroll data for September, which increased by 136,000 and unemployment fell from 3.7% to 3.5%, which means that this indicator stands at lowest level of the last 50 years, which is in line with the 11-year historical expansion of the country's economy. Among the shares that rose the most, Apple Inc said (+2.80%), after reporting that it will increase the production of iPhone 11 an additional 10%, in the same way, the sector that led the market was the Philadelphia chips index with +1.9%. On the other face of the coin, the Hewlett-Packard Inc (-9.56%) share collapsed, after the company presented a plan of cuts of up to 9 thousand jobs under a restructuring plan that involves costs of 1 billion of dollars. In corporate news, PG&E Corp (+13.82%) reported that the obligations payable by the company, which is in the middle of a bankruptcy and restructuring process, totaled a total of 34.35 billion dollars mostly belonging to the main Country banks.

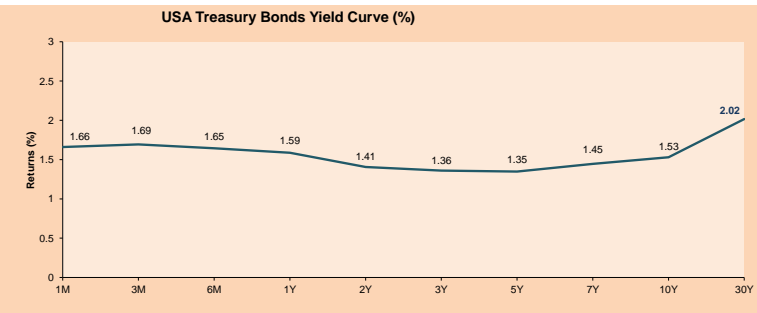
Europe:

The European market closed the day with positive results due to the key report on employment in the United States. This report showed that employment has a steady growth and that the unemployment rate reached a minimum in 50 years. The main indices had the following yields Euro Stoxx 50 up +0.86%, FTSE 100 up +1.10% and CAC 40 at +0.91%. Regarding to corporate news, the founder and CEO of the SoftBank Group, Masayoshi Son, has had complications to increase the massive investment in technology due to a failed acquisition, through a public offer, of the WeWork office rental company. Likewise, analysts have reduced their forecasts regarding the income of Asian companies. Japanese companies lead the 1.4% reduction on average as they may have some vulnerability due to the slowdown in China. On the other hand, the earnings forecast for companies in Taiwan and India increased due to a considerable increase in new companies that boost exports in their respective countries. The companies with the best returns of the day were Bayer AG (+2.74%) and Scottish Mortgage Investment T. (+4.03%).

Asia:

Asian markets closed today with mixed results, since the Nikkei index S & P / ASX 200 had positive variations of +0.32% and +0.37%, on the other hand; Hang Seng and CSI 300 indexes obtained negative variations of -1.11% and -0.99% respectively. On the other hand, the head of the Hong Kong executive, Carrie Lam, announced the banning from midnight of the use of masks with which the protesters hid their identity during the protests that happened the last 4 months. The government will give an emergency law that will constitute the use of masks to try to "restore order" according to the chief executive, adding that "the law does not imply that Hong Kong is in a state of emergency", but that "Protests are increasingly frequent and violent, and people are worried." This announcement is related to what happened today to the Hong Kong stock exchange, as the Hang Seng fell by 1.11% approaching 25,821.03. The shares of the MTR rail system operator, who suffered damage to its infrastructure due to the protests, had a negative variation of -1.91%.

ETFs	Curr.	Close	1D	5D	30 D	YTD	Exchange
SPDR S&P 500 ETF TRUST	USD	294.35	1.35%	-0.96%	0.57%	19.42%	NYSE Arca
ISHARES MSCI EMERGING MARKET	USD	40.97	0.44%	0.81%	0.89%	5.69%	NYSE Arca
ISHARES IBOXX HIGH YLD CORP	USD	86.43	0.31%	-0.33%	0.07%	10.83%	NYSE Arca
FINANCIAL SELECT SECTOR SPDR	USD	27.46	1.85%	-2.17%	2.60%	17.06%	NYSE Arca
VANECK GOLD MINERS	USD	27.87	2.28%	1.53%	-9.95%	32.15%	NYSE Arca
ISHARES RUSSELL 2000 ETF	USD	149.14	0.95%	-1.34%	1.23%	12.47%	NYSE Arca
SPDR GOLD SHARES	USD	141.90	0.00%	0.60%	-3.25%	17.03%	NYSE Arca
ISHARES 20+ YEAR TREASURY BO	USD	145.99	0.74%	2.46%	-0.80%	22.35%	NASDAQ GM
INVECO QQQ TRUST SERIES 1	USD	188.81	1.47%	0.95%	0.46%	23.14%	NASDAQ GM
ISHARES NASDAQ BIOTECHNOLOGY	USD	99.53	0.75%	0.23%	-1.59%	3.36%	NASDAQ GM
ENERGY SELECT SECTOR SPDR	USD	57.38	0.63%	-3.77%	-0.16%	2.69%	NYSE Arca
PROSHARES ULTRA VIX ST FUTUR	USD	28.45	-8.19%	-2.79%	-14.35%	-67.64%	NYSE Arca
UNITED STATES OIL FUND LP	USD	11.04	1.01%	-5.32%	-5.72%	14.29%	NYSE Arca
ISHARES MSCI BRAZIL ETF	USD	42.11	2.21%	-0.28%	2.23%	11.64%	NYSE Arca
SPDR S&P OIL & GAS EXP & PR	USD	21.24	-0.14%	-5.64%	-1.87%	-19.19%	NYSE Arca
UTILITIES SELECT SECTOR SPDR	USD	64.77	1.39%	0.11%	2.39%	25.25%	NYSE Arca
ISHARES US REAL ESTATE ETF	USD	93.59	0.54%	0.43%	0.18%	27.65%	NYSE Arca
SPDR S&P BIOTECH ETF	USD	76.82	0.21%	0.48%	-2.96%	7.07%	NYSE Arca
ISHARES IBOXX US EMERGING GRA	USD	128.27	0.41%	1.22%	0.03%	16.71%	NYSE Arca
ISHARES JP MORGAN USD EMERGI	USD	113.92	0.88%	0.97%	-1.10%	13.57%	NASDAQ GM
REAL ESTATE SELECT SECT SPDR	USD	39.40	0.46%	0.28%	-1.09%	29.70%	NYSE Arca
ISHARES CHINA LARGE-CAP ETF	USD	40.24	-0.17%	2.00%	0.47%	4.01%	NYSE Arca
CONSUMER STAPLES SPDR	USD	61.40	1.57%	0.46%	0.23%	23.23%	NYSE Arca
VANECK JR GOLD MINERS	USD	38.24	2.16%	1.70%	-10.53%	28.54%	NYSE Arca
SPDR B&G BARC HIGH YIELD BND	USD	107.69	0.33%	-0.46%	-0.07%	11.44%	NYSE Arca
VANGUARD REAL ESTATE ETF	USD	93.43	0.60%	0.37%	0.28%	28.42%	NYSE Arca
GRAYSCALE BITCOIN TRUST BTC	USD	9.79	0.41%	-0.41%	-25.66%	146.91%	OTC US



Source: Bloomberg

Capital Market Laboratory. Coordinador: Economista Bruno Bellido Anicama
Collaboration: Juan Carlos Figueroa, Alonso Butters, Jeanpierre León y Manuel Muñoz Najara
e-mail: pulsobursatil@ulima.edu.pe
facebook: www.facebook.com/pulsobursatil
Phone number: 4376767 Annex: 35340

PULSO BURSÁTIL

LIMA

Stocks

	Ticker	Currency	Price	1D*	5D*	30D*	YTD*	Frequency	Volume (US\$)	Beta	Dividend Yield (%)	Price Earning	Market Cap. (M US\$)	Economic Sector*	Index Weight
▲	ALICORC1 PE**	S/.	9.01	0.11%	-3.12%	-4.15%	-7.43%	100.00%	583,478	0.57	2.66	18.27	2,272.56	Industrial	3.53%
▲	ATACOCB1 PE**	S/.	0.19	0.00%	0.00%	2.21%	-42.55%	65.00%	1,612	1.21	0.00	4.98	51.72	Mining	1.02%
-	BACKUSI1 PE**	S/.	23.70	0.00%	-1.25%	1.59%	21.40%	65.00%	977	0.32	0.00	7.73	9,395.80	Industrial	0.82%
▲	BAP PE**	US\$	207.60	2.12%	-2.44%	1.27%	-3.79%	100.00%	616,162	1.27	2.91	-	16,558.48	Diverse	5.82%
▲	BVN PE**	US\$	14.98	2.46%	-4.89%	-2.16%	-6.61%	100.00%	60,858	1.66	0.77	-	4,129.01	Mining	5.88%
▼	CASAGRC1 PE**	S/.	3.12	-0.95%	-3.70%	-1.27%	-22.85%	100.00%	31,419	0.47	0.41	21.41	77.77	Agricultural	1.31%
-	BBVAC1 PE**	S/.	3.25	0.00%	0.31%	0.62%	-6.34%	95.00%	75,723	0.51	4.24	12.84	5,659.69	Finance	2.85%
▲	CORAREI1 PE**	S/.	0.67	1.52%	0.00%	1.52%	0.90%	100.00%	18,119	0.97	9.15	3.56	318.54	Industrial	1.72%
-	CPACASC1 PE**	S/.	5.75	0.00%	-2.21%	-0.86%	-10.85%	100.00%	4,735	0.59	6.56	31.94	726.09	Industrial	2.38%
-	CVERDEC1 PE**	US\$	17.50	0.00%	-2.78%	-7.89%	-14.36%	100.00%	78,561	0.81	2.45	133.59	6,125.98	Mining	5.25%
-	ENGEPEC1 PE**	S/.	2.48	0.00%	0.00%	1.22%	32.62%	80.00%	144,156	0.75	4.12	13.60	2,083.18	Public Services	1.44%
▼	ENDISPC1**	S/.	6.46	-0.31%	0.94%	1.25%	25.88%	95.00%	23,999	0.65	3.51	10.53	1,220.63	Public Services	0.98%
▼	FERREY1 PE**	S/.	2.00	-1.96%	-6.10%	-3.38%	-15.11%	100.00%	310,689	0.83	8.79	6.99	577.41	Diverse	4.90%
▲	GRAMONC1 PE**	S/.	1.53	2.00%	-7.27%	-7.27%	-23.12%	55.00%	50,561	0.94	0.00	-	394.74	Diverse	4.05%
▲	IFS PE**	US\$	38.95	0.13%	-8.33%	-5.92%	-3.69%	90.00%	317,866	1.01	4.49	11.20	4,496.69	Diverse	7.22%
▲	INRETC1 PE**	US\$	36.10	1.12%	-1.77%	-3.71%	28.70%	100.00%	464,184	0.75	0.94	30.27	3,711.34	Diverse	5.28%
▲	LUSURC1 PE**	S/.	24.00	11.63%	47.24%	49.96%	129.38%	100.00%	2,799,398	0.50	3.50	19.21	3,458.15	Public Services	1.81%
-	MINSUR1 PE**	S/.	1.45	0.00%	-2.03%	0.00%	9.85%	60.00%	605	1.36	0.00	2.67	1,236.97	Mining	3.09%
-	PML PE**	US\$	0.10	0.00%	-8.65%	0.00%	-45.71%	60.00%	6,128	1.35	0.00	-	25.06	Mining	2.12%
-	RELAPAC1 PE**	S/.	0.11	0.00%	-4.55%	-1.87%	-16.67%	100.00%	3,379	0.82	0.00	-	258.47	Industrial	2.12%
▲	SCCO PE**	US\$	32.89	0.40%	-3.26%	3.92%	12.87%	90.00%	220,814	1.35	6.22	17.49	25,425.91	Mining	2.14%
▲	SIDERC1 PE**	S/.	0.55	1.85%	-3.51%	0.00%	13.87%	90.00%	14,997	1.43	18.56	5.98	199.84	Industrial	1.43%
▲	TV PE**	US\$	0.17	1.85%	-0.60%	17.86%	-44.44%	90.00%	4,121	1.68	0.00	-	134.33	Mining	2.93%
▼	UNACEMC1 PE**	S/.	2.02	-0.98%	-5.16%	-12.93%	-21.06%	65.00%	154,801	0.61	2.57	9.72	1,086.73	Industrial	3.00%
▲	VOLCABC1 PE**	S/.	0.45	4.65%	-3.23%	-2.17%	-36.62%	100.00%	51,927	1.48	0.00	-	2,016.98	Mining	5.90%
-	NEXAPEC1 PE**	S/.	3.28	0.00%	0.00%	5.81%	-10.65%	50.00%	4,853	1.13	0.00	17.05	1,282.76	Mining	1.56%

Quantity of shares: 26

Source: Bloomberg, Económica

* Bloomberg Industry Classification System

** PER is used in the stock market and original currency of the instrument

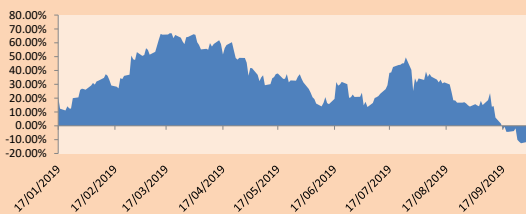
*Legend: Variation 1D: 1 Day; 5D: 5 Days; 1M: 1 Month; YTD: Var. % 12/31/18 to date

Sectorial Indices

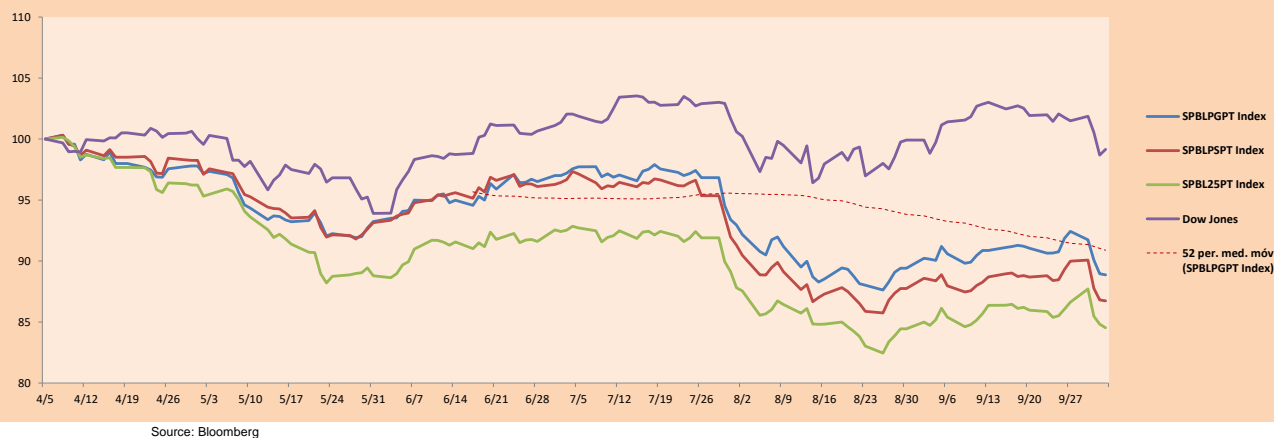
	Close	1D*	5D*	30D*	YTD*	Beta
▲ Mining Index	274.04	1.61%	-3.93%	0.15%	-3.79%	1.52
▲ Consumer Index	1,107.42	0.59%	-2.33%	-3.11%	10.12%	0.37
▼ Industrial Index	191.81	-0.53%	-4.91%	-5.21%	-15.46%	0.54
▲ Banking and Financial Index	1,159.34	2.04%	-2.89%	0.70%	-3.39%	1.15
▲ Construction Index	207.85	0.09%	-4.40%	-6.19%	-15.47%	0.47
▲ Services Index	607.95	3.98%	14.06%	16.00%	52.90%	0.19
▲ Juniors Index	17.08	0.18%	-4.04%	-9.29%	-41.98%	0.32
▲ Electric Index	593.51	3.98%	14.06%	16.00%	52.90%	0.19

*Legend: Variation 1D: 1 Day; 5D: 5 Days; 1M: 1 Month; YTD: Var. % 12/31/18 to date

Correlation Graph of Returns of Mining Index against Metallic Index of London (3 months)



Indices (6 months)



Source: Bloomberg

Capital Market Laboratory Coordinator: Economist Bruno Bellido Anicama
 Collaboration: Juan Carlos Figueroa, Alonso Butter, Jeanpierre León y Manuel Muñoz Najar
 e-mail: pulsobursatil@ulima.edu.pe
 facebook: www.facebook.com/pulsobursatil.ul
 Phone number : 4376767 Annex: 35340

The content of this document is just for informational purposes. The information and opinions expressed should not be considered as recommendations for future decisions. Under any circumstances, the Capital Market Laboratory of University of Lima will be responsible for the use of the statements in this document.

PULSO BURSÁTIL

SOVEREIGN RATING

RISK RATINGS

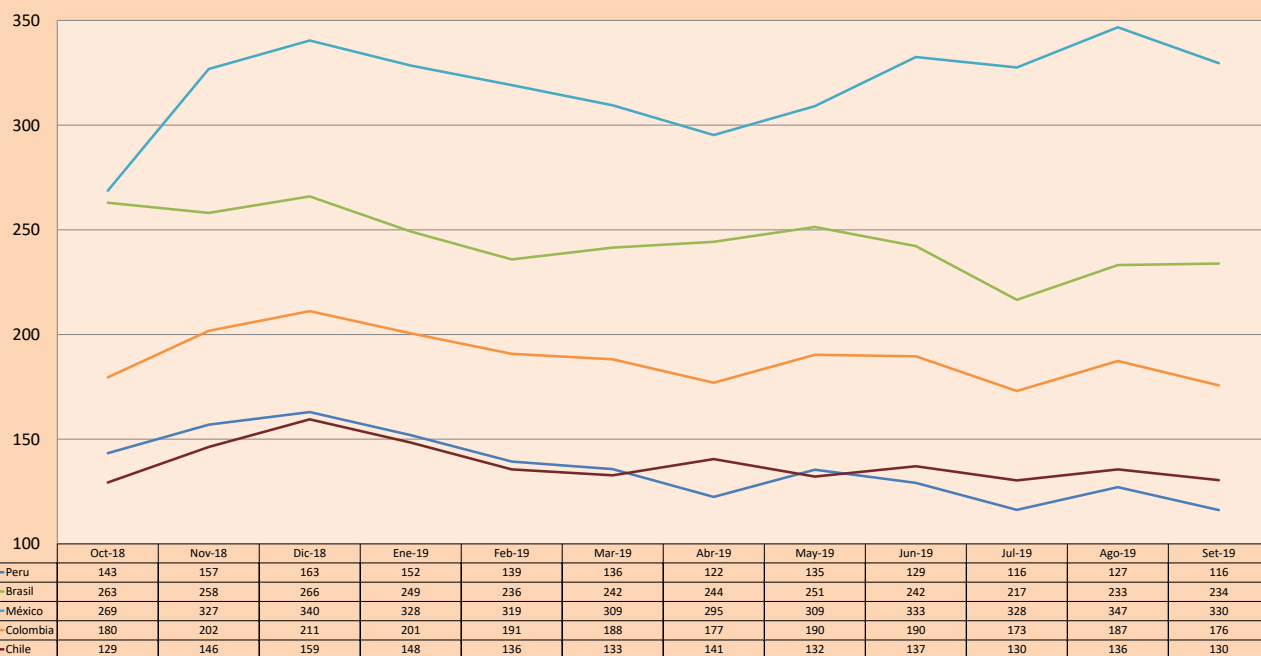
Moody's	S&P	Fitch	
Aaa	AAA	AAA	Prime
Aa1	AA+	AA+	High credit quality
Aa2	AA	AA	
Aa3	AA-	AA-	
A1	A+	A+	Medium-high grade, with low credit risk
A2	A	A	
A3	A-	A-	
Baa1	BBB+	BBB+	Moderate Credit Risk
Baa2	BBB	BBB	
Baa3	BBB-	BBB-	
Ba1	BB+	BB+	It has speculative elements and it is subject to substantial credit risk
Ba2	BB	BB	
Ba3	BB-	BB-	
B1	B+	B+	It is considered speculative and it has high credit risk
B2	B	B	
B3	B-	B-	
Caa1	CCC+		Bad credit conditions and it is subject to high credit risk
Caa2	CCC		
Caa3	CCC-	CCC	
Ca	C		Very close to default or in default
		DDD	
		DD	
		D	

Source: Bloomberg

Latin America Credit Rating			
Clasificadora de riesgo			
Country	Moody's	Fitch	S&P
Peru	A3	BBB+	BBB+
Mexico	A3	BBB	BBB+
Venezuela	C	WD	SD
Brazil	Ba2	BB-	BB-
Colombia	Baa2	BBB	BBB-
Chile	A1	A	A+
Argentina	Caa2 *-	CC	CCC-
Panama	Baa1	BBB	BBB+

Source: Bloomberg

LATAM Country Risk (bps)



Source: BCRP

Capital Market Laboratory Coordinator: Economist Bruno Bellido Anicama
 Support: Juan Carlos Figueroa, Alonso Butters, Jeanpiere León y Manuel Muñoz Najar
 e-mail: pulsobursatil@ulima.edu.pe
 facebook: www.facebook.com/pulsobursatil.ul
 Phone number : 4376767 Annex: 35340

The content of this document is just for informational purposes. The information and opinions expressed should not be consider as recommendations for future decisions. Under any circumstances, the Capital Market Laboratory of University of Lima will be responsible for the use of the statements in this document.