



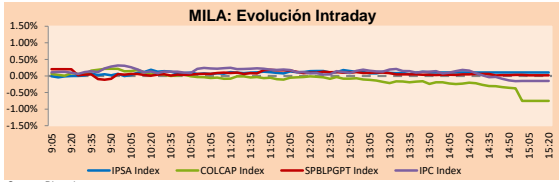
PULSO BURSÁTIL

Lima, October 15, 2019

MILA

Main Indexes	Close	1 D	5 D	1 M	YTD	
▲ IPISA (Chile)	5,157.50	0.51%	2.31%	3.06%	1.02%	149.00
▲ IGPA (Chile)	25,970.69	0.46%	2.20%	3.09%	0.08%	186.87
▼ IGBC (Colombia)	12,858.59	-0.69%	-0.91%	0.21%	15.38%	99.39
▼ COLCAP (Colombia)	1,578.89	-0.75%	-1.13%	-0.11%	19.08%	94.74
▲ S&P/BVL (Perú)*	19,405.79	0.02%	0.90%	-0.05%	0.29%	88.68
▲ S&P/BVL SEL (Perú)	504.03	-0.20%	0.53%	-0.11%	-1.62%	69.26
▲ S&P/BVL LIMA 25	24,693.75	0.16%	0.96%	0.62%	-6.84%	83.40
▼ IPC (México)	43,244.63	-0.13%	1.67%	0.94%	3.85%	279.15
▼ S&P MILA 40	616.70	-0.24%	2.30%	0.21%	1.33%	261.33

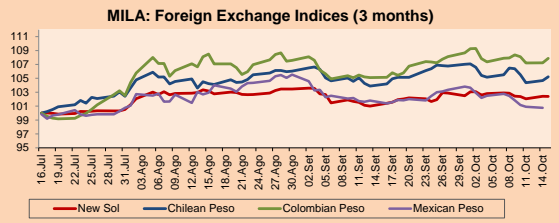
* Market Cap. Of the last price Legend: Variation 1D: 1 day; 5D: 5 days; 1M: 1 Month; YTD: Var%12/31/18 to date



Source: Bloomberg

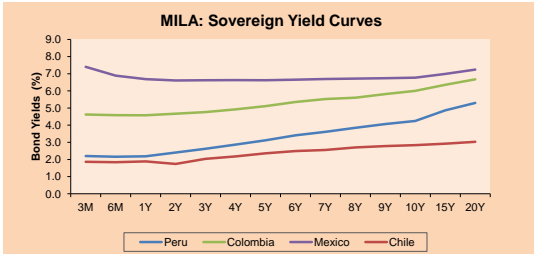
Currency	Price	1D*	5D*	30 D*	YTD*
▼ New Sol (PEN)	3,367.3	0.00%	-0.46%	1.42%	-0.05%
▲ Chilean Peso (CLP)	716.24	0.52%	-1.17%	1.28%	3.26%
▲ Colombian Peso (COP)	3,451.70	0.59%	-0.05%	2.62%	6.21%
▼ Mexican Peso (MXN)	19.24	-0.17%	-1.98%	-0.86%	-2.10%

* Legend: Variation 1D: 1 day; 5D: 5 days; 1M: 1 Month; YTD: Var%12/31/18 to date



Base: 16/07/19=100 Source: Bloomberg

Fixed Income		Bid Yield (%)	Ask Yield (%)	Duration	
PERU 4.125 08/25/2027	USD	112.254	2.42	2.39	6.76
PERU 7.35 07/21/25	USD	127.022	2.34	2.29	4.81
PERU 8.75 11/21/33	USD	165.446	3.02	3.02	9.40
PERU 6.55 03/14/37	USD	146.392	3.09	3.09	11.30
PERU 5.625 11/18/2050	USD	146.035	3.26	3.26	17.43
CHILE 2.25 10/30/22	USD	100.649	2.06	1.99	2.89
CHILE 3.875 08/05/20	USD	101.54	2.08	1.77	0.79
CHILE 3.625 10/30/2042	USD	110.789	2.98	2.97	15.99
COLOM 11.75 02/25/20	USD	103.384	2.54	1.71	0.36
COLOM 11.85 03/09/28	USD	162.802	3.27	3.21	6.06
COLOM 10.375 01/28/33	USD	162.133	4.29	4.14	8.48
COLOM 7.375 09/18/37	USD	142.692	4.02	4.00	11.31
COLOM 6.125 01/18/41	USD	130.572	3.99	3.97	13.04
MEX 4 10/02/23	USD	105.854	2.47	2.41	3.66
MEX5.55 01/45	USD	121.556	4.171	4.154	14.64



Source: Bloomberg

Equity

Largest gains	Exchange	Amt.	Price	▲%	Largest losses	Exchange	Amt.	Price	▼%
CORAREI1	Lima	PEN	0.75	5.63	ALICORI1	Lima	PEN	6.00	-5.51
CGE	Santia.	CLP	629.00	4.99	GANADERO	Colomb.	COP	360.00	-2.70
MULTIFOODS	Santia.	CLP	355.98	3.48	FORUS	Santia.	CLP	1540.60	-2.49
TELEFBC1	Lima	PEN	0.82	2.50	BOGOTA	Colomb.	COP	78500.00	-2.24

Per Turnover

Exchange	Amount (US\$)
FALABELLA	Santia. 17,379,328
PARAUCCO	Santia. 9,925,148
ENTEL	Santia. 7,056,199
BCI	Santia. 6,525,919
ECOPETROL	Colomb. 5,589,092

Per Volume

Exchange	Volume
BSANTANDER	Santia. 60,673,399
CHILE	Santia. 30,278,547
VAPORES	Santia. 22,268,809
COLBUN	Santia. 11,770,445
ORO BLANCO	Santia. 7,793,722

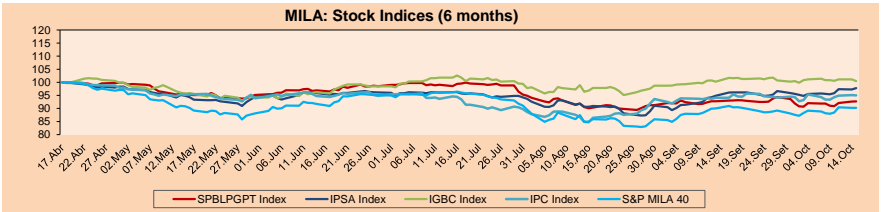
MILA

Peru: The General BVL index ended today's session with a positive result of +0.02%. The index maintains a positive trend in local currency of +0.29%, while the adjusted yield in dollars amounts to +0.41%. Then, the S&P / BVL Peru SEL varied by -0.20%, while the S & P / BVL LIMA 25 rose +0.16%. The PEN spot reached S / 3.3673. Headline: GDP grows 3.39% in August, its highest rate of the year.

Chile: The IPSA index closed today with a positive yield of +0.49%. The sectors with the best results were Industrial (+1.35%) and Basic Consumer Products (+0.75%). On the other hand, the values with the highest results of the day were Enel Chile SA (+2.51%) and Latam Airlines SA (+1.71%). Headline: IMF joins pessimism and expects Chile to grow 3% next year.

Colombia: The COLCAP index closed today with a negative yield of -0.75%. The sectors with the worst results were Financial (-1.45%) and Communication Services (-1.14%). On the other hand, the values with the lowest results of the day were Banco de Bogota SA (-2.24%) and Grupo Argos SA (-2.09%). Headline: IMF projects economic growth of 3.4% for Colombia in 2019.

Mexico: The MEXBOL index closed today with a negative return of -0.13%. The sectors with the worst results were Public Services (-1.37%) and Industrial (-0.78%). On the other hand, the values with the worst returns were Bolsa Mexicana de Valores SAB (-2.53%) and Gruma SAB de CV (-2.40%). Headline: IMF adjusts to the low growth forecast at 0.3%.

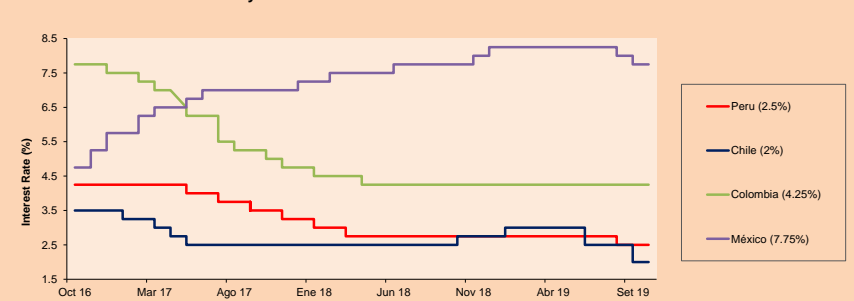


Base: 18/04/19=100 Source: Bloomberg

ETFs

ETFs	Curr.	Close	1D	5D	30 D	YTD	Exchange
▼ iShares MSCI All Peru Caped Index Fund	USD	34.62	-0.14%	1.73%	-1.28%	-0.66%	NYSE Arca
▲ iShares MSCI Mexico Capped	USD	38.77	0.32%	4.61%	1.28%	-4.58%	Cboe BZX
▼ Global X MSCI Colombia	USD	12.845	-0.16%	1.27%	-1.68%	17.28%	NYSE Arca
▲ iShares MSCI Emerging Markets	USD	44.24	0.16%	4.12%	2.53%	9.61%	NYSE Arca
▲ Vanguard FTSE Emerging Markets	USD	41.92	0.89%	3.92%	-0.76%	8.14%	NYSE Arca
▲ Vanguard FTSE Emerging Markets	USD	41.27	0.68%	3.67%	-0.95%	10.66%	NYSE Arca
▲ iShares Core MSCI Emerging Markets	USD	50.28	0.76%	3.78%	-0.79%	7.71%	NYSE Arca
▲ iShares JP Morgan Emerging Markets Bonds	USD	57.86	0.28%	2.53%	-0.60%	4.70%	Cboe BZX
- Morgan Stanley Emerging Markets Domestic	USD	6.82	0.00%	2.71%	4.45%	20.12%	New York

MILA: Policy Rate



Source: Bloomberg

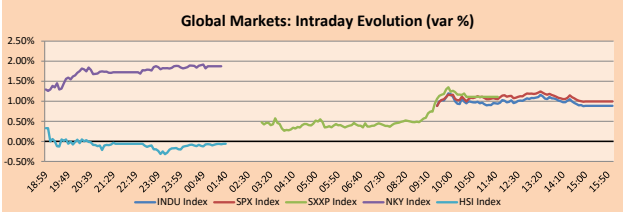
Capital Market Laboratory Codinator: Economist Bruno Bellido Anicama
Collaboration: Juan Carlos Figueroa, Alonso Butters, Jeanpierre León y Manuel Muñoz Najjar
e-mail: pulsobursatil@ulima.edu.pe
facebook: www.facebook.com/pulsobursatil.ul
Phone number : 4376767 Annex: 35340

PULSO BURSÁTIL

WORLD

Main Indices	Close	1 D*	5 D*	1 M*	YTD*	Market Cap. (US\$ Mill.)
▲ Dow Jones (USA)	27,024.80	0.89%	-3.29%	-0.72%	15.85%	7,508,463
▲ Standard & Poor's 500 (USA)	2,995.68	1.00%	3.55%	-0.39%	19.50%	25,674,352
▲ NASDAQ Composite (USA)	8,148.71	1.24%	4.15%	-0.34%	22.81%	12,534,162
▲ Stoxx EUROPE 600 (Europe)	394.02	1.11%	4.04%	0.57%	16.69%	9,562,128
▲ DAX (Germany)	12,629.79	1.15%	5.51%	1.29%	19.61%	1,065,301
▼ FTSE 100 (United Kingdom)	7,211.64	-0.03%	0.96%	-2.11%	7.1%	1,510,474
▲ CAC 40 (France)	5,702.05	1.04%	4.50%	0.82%	20.53%	1,587,927
▲ IBEX 35 (Spain)	9,356.10	1.19%	4.65%	2.39%	9.56%	527,426
▲ MSCI AC Asia Pacific Index	157.83	0.54%	1.08%	-1.33%	7.58%	18,199,639
▼ HANG SENG (Hong Kong)	26,503.93	-0.07%	2.36%	-2.29%	2.55%	2,423,253
▼ SHANGHAI SEC Comp. (China)	2,991.05	-0.56%	2.66%	-1.31%	19.93%	4,700,700
▲ NIKKEI 225 (Japan)	22,207.21	1.87%	3.89%	1.00%	10.95%	3,367,645
▲ BOVESPA (Brazil)	104,489.60	0.18%	4.51%	0.95%	18.89%	760,811
▼ MERVAL (Argentina)	31,333.68	-1.46%	1.27%	3.97%	3.44%	18,400

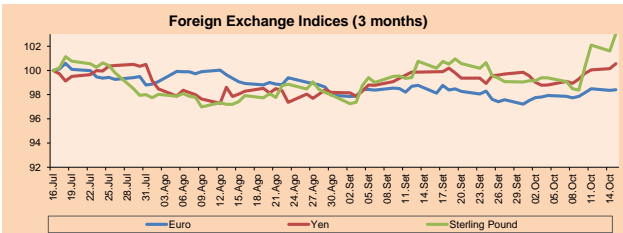
*Legend: Variation 1D: 1 Day; 5D: 5 Days; 1M: 1 Month; YTD: Var.% 12/31/18 to date



Source: Bloomberg

Currency	Price	1 D*	5 D*	1 M*	YTD*
▲ Euro	1.1033	0.05%	0.69%	-0.36%	-3.78%
▲ Yen	108.8600	0.42%	1.65%	0.71%	-0.76%
▲ Sterling Pound	1.2786	1.41%	4.64%	2.28%	0.25%
▲ Yuan	7.0817	0.20%	-0.88%	0.03%	2.95%
▼ Hong Kong Dollar	7.8455	0.00%	0.01%	0.33%	0.17%
▲ Brazilian Real	4.1778	1.25%	2.01%	2.22%	7.83%
▲ Argentine Peso	58.2700	0.41%	0.73%	3.83%	54.69%

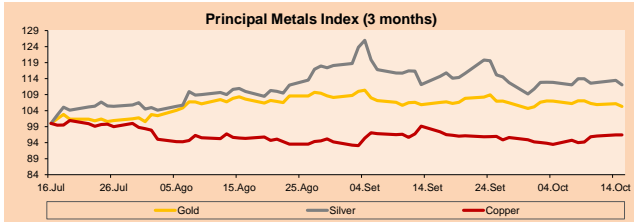
*Legend: Variation 1D: 1 Day; 5D: 5 Days; 1M: 1 Month; YTD: Var.% 12/31/18 to date



Base: 16/07/19=100
Source: Bloomberg

Commodities	Close	1 D*	5 D*	1 M*	YTD*
▼ Oro (US\$ Oz. T) (LME)	1,481.19	-0.81%	-1.62%	-0.50%	15.50%
▼ Plata (US\$ Oz. T) (LME)	17.43	-1.25%	-1.67%	-0.06%	12.52%
- Cobre (US\$ TM) (LME)	5,786.25	0.00%	2.57%	-2.74%	-2.74%
- Zinc (US\$ TM) (LME)	2,444.00	0.00%	5.44%	2.54%	-2.96%
▼ Petróleo WTI (US\$ Barril) (NYM)	52.84	-1.40%	0.40%	-3.58%	9.58%
- Estriño (US\$ TM) (LME)	16,493.00	0.00%	0.68%	0.14%	-15.51%
- Plomo (US\$ TM) (LME)	2,125.25	0.00%	-0.84%	1.42%	5.89%
▲ Azúcar #11 (US\$ Libra) (NYB-ICE)	12.59	0.56%	1.04%	5.44%	-4.26%
▲ Cacao (US\$ TM) (NYB-ICE)	2,522.00	2.98%	3.02%	7.92%	2.19%
▼ Café Arábica (US\$ TM) (NYB-ICE)	94.45	-0.42%	-1.31%	-0.08%	-17.40%

*Lenda: Variación 1D: 1 Día; 5D: 5 Días; 1M: 1 Mes; YTD: Var.% 31/12/17 a la fecha



Base: 16/07/19=100
Source: Bloomberg

Equity

Alemania (Acciones del DAX Index)

Largest gains	Curr.	Price	▲%	Exchange	Largest losses	Curr.	Price	▼%	Exchange
BMW GY	EUR	66.63	2.65	Xetra	MTX GY	EUR	238	-2.58	Xetra
FRE GY	EUR	43.29	2.56	Xetra	HEN3 GY	EUR	92.76	-0.77	Xetra
VNA GY	EUR	47.7	2.45	Xetra	HEI GY	EUR	63.74	0.25	Xetra
DAI GY	EUR	48.05	2.09	Xetra	SAP GY	EUR	115.48	0.63	Xetra

Europe (Stocks from STOXX EUROPE 600)

Largest gains	Curr.	Price	▲%	Exchange	Largest losses	Curr.	Price	▼%	Exchange
HAS LN	Gbp	155.4	8.14	Londres	IP IM	EUR	25.68	-8.02	Borsa Italiana
HMSO LN	Gbp	322	7.30	Londres	SXS LN	Gbp	2310	-3.71	Londres
BIRC ID	EUR	4.43	6.59	EN Dublin	BWY LN	Gbp	3370	-3.49	Londres
LAND LN	Gbp	946	6.08	Londres	RHM GY	EUR	107.1	-3.30	Xetra

Global Overview:

United States:

US markets ended today's session on the rise, amid large gains that left the uncertainty of trade negotiations between the US and China in the backdrop. The industrial Dow Jones increased + 0.89%, while the S&P 500 rose + 1% and the Nasdaq Composite + 1.24%. Investors celebrated quarterly earnings better than expected. These benefits in the main indexes were mainly led by J.P. Morgan Chase, UnitedHealth and Johnson & Johnson. Regarding J.P. Morgan, this had record revenues for the previous quarter. CEO Jamie Dimon highlighted the strength of the American consumer. In turn, income from pharmacy benefits increased UnitedHealth's results, while the strength of prescription drugs improved Johnson & Johnson's results. In this way, the actions of J.P. Morgan were up + 3.01%, reaching a record high; UnitedHealth rose + 8.16% and Johnson & Johnson increased + 1.62%. Additionally, it should be noted that these gains that exceeded expectations distracted investors from the persistent uncertainty caused by the commercial talks and the direction they will take.

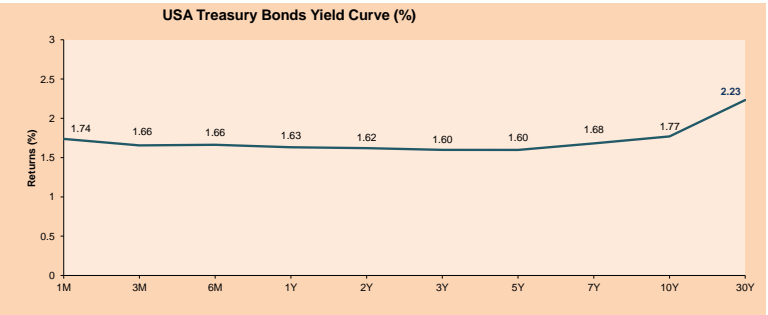
Europe:

The European market ended the day on the rise after negotiator Michel Barnier of the European Union announced that there is still the possibility of reaching an agreement in Brexit this week. Additionally, the new information on the U.K. unemployment rate was published, which is increasing from 3.8% to 3.9%. The main indexes in Europe had the following results, FTSE 100 down by -0.03%, DAX up by + 1.15% and CAC 40 up by + 1.15%. President Donald Trump imposed sanctions on Turkey and delayed trade negotiations. Also, Turkish steel tariffs were increased by 50% in order to stop the incursion of NATO allies in Syria. In other news, Neil Woodford, British fund manager and founding partner of Woodford Investment Management, was suspended for 4 months after the poor performance, increasing the demand for investors who want their money back and not having to return them since June. The companies with the worst results of the day were Land Securities Group PLC (+ 6.08%) and British Land Co PLC (+ 5.45%) compared to the UK FTSE 100.

Asia:

The Asian indexes ended with mixed results that the Japanese Nikkei 225 index had a positive variation of + 1.87% being driven by the profits of the pulp and paper, railway and bus sectors. On the other hand, the Chinese index had a negative variation of -0.56%. In other news, the Chinese government acknowledged that the statements by US officials about the scope of an initial agreement to resolve trade disputes were adjusted, as confirmed by the Ministry of Foreign Affairs of China. In this regard, the Chinese official has assured that the two countries "are unambiguous" in terms of reaching an economic and commercial agreement. "There are no differences," he said. "This economic and commercial agreement will be very significant, beneficial for China, the US and the world, and beneficial for the economy, trade and peace." Finally, the Chinese spokesman announced that China will increase its agricultural purchases from the US, Chinese companies buy American agricultural products independently and in a market-oriented manner. According to preliminary data, Chinese companies had acquired 20 million tons of soybeans, 700,000 tons of pork, 700,000 tons of sorghum, 230,000 tons of wheat and 320,000 tons of cotton from the US so far this year.

ETFs	Curr.	Close	1D	5D	30 D	YTD	Exchange
SPDR S&P 500 ETF TRUST	USD	298.88	0.99%	3.69%	-0.28%	21.20%	NYSE Arca
ISHARES MSCI EMERGING MARKET	USD	41.92	0.89%	3.92%	-0.76%	8.14%	NYSE Arca
ISHARES IBOXX HIGH YLD CORP	USD	87.02	0.22%	1.14%	0.24%	11.59%	NYSE Arca
FINANCIAL SELECT SECTOR SPDR	USD	28.09	1.44%	4.89%	-0.90%	19.74%	NYSE Arca
VANECK GOLD MINERS	USD	26.19	-3.25%	-7.65%	-1.69%	24.18%	NYSE Arca
ISHARES RUSSELL 2000 ETF	USD	151.99	1.15%	3.37%	-3.43%	14.16%	NYSE Arca
SPDR GOLD SHARES	USD	139.61	-0.70%	-1.63%	-0.39%	15.14%	NYSE Arca
ISHARES 20+ YEAR TREASURY BO	USD	139.75	-1.21%	-3.73%	2.53%	17.12%	NASDAQ GM
INVESCO QQQ TRUST SERIES 1	USD	193.52	1.27%	4.37%	0.71%	26.21%	NASDAQ GM
ISHARES NASDAQ BIOTECHNOLOGY	USD	102.46	1.83%	4.97%	-1.60%	6.41%	NASDAQ GM
ENERGY SELECT SECTOR SPDR	USD	58.10	0.41%	3.94%	-4.01%	3.98%	NYSE Arca
PROSHARES ULTRA VIX ST FUTUR	USD	22.48	-4.10%	-25.24%	-10.47%	-72.49%	NYSE Arca
UNITED STATES OIL FUND LP	USD	11.06	-1.07%	1.56%	-3.32%	14.49%	NYSE Arca
ISHARES MSCI BRAZIL ETF	USD	41.80	-0.78%	3.01%	-1.14%	10.82%	NYSE Arca
SPDR S&P OIL & GAS EXP & PR	USD	21.00	0.10%	3.04%	-10.02%	-20.10%	NYSE Arca
UTILITIES SELECT SECTOR SPDR	USD	63.31	-0.31%	-0.95%	1.37%	22.42%	NYSE Arca
ISHARES US REAL ESTATE ETF	USD	93.33	0.05%	0.52%	2.68%	27.29%	NYSE Arca
SPDR S&P BIOTECH ETF	USD	78.86	2.50%	5.08%	-4.32%	9.91%	NYSE Arca
ISHARES IBOXX INVESTMENT GRA	USD	126.66	-0.27%	-0.67%	1.86%	15.24%	NYSE Arca
ISHARES JP MORGAN US EMERGI	USD	113.20	0.21%	0.03%	0.89%	12.85%	NASDAQ GM
REAL ESTATE SELECT SECT SPDR	USD	39.32	0.08%	0.46%	2.57%	29.44%	NYSE Arca
ISHARES CHINA LARGE-CAP ETF	USD	41.54	0.95%	4.66%	-0.86%	7.37%	NYSE Arca
CONSUMER STAPLES SPDR	USD	60.28	-0.43%	-0.07%	-0.66%	20.89%	NYSE Arca
VANECK JR GOLD MINERS	USD	35.78	-3.40%	-7.69%	-1.32%	18.40%	NYSE Arca
SPDR BBG BARC HIGH YIELD BND	USD	108.38	0.17%	1.09%	0.10%	12.16%	NYSE Arca
VANGUARD REAL ESTATE ETF	USD	93.19	0.13%	0.49%	2.51%	28.09%	NYSE Arca
GRAYSCALE BITCOIN TRUST BTC	USD	9.28	-4.53%	-3.68%	-26.29%	134.05%	OTC US



Source: Bloomberg

Capital Market Laboratory Coordinator: Economist Bruno Bellido Anicam
Collaboration: Juan Carlos Figueroa, Alonso Butters, Jeanpierre León y Manuel Muñoz Najar
e-mail: pulso_bursatil@ulima.edu.pe
facebook: www.facebook.com/pulso_bursatil
Phone number: 4376767 Annex: 35340



PULSO BURSÁTIL

LIMA

Stocks

Ticker	Currency	Price	1D*	5D*	30D*	YTD*	Frequency	Volume (US\$)	Beta	Dividend Yield (%)	Price Earning	Market Cap. (M US\$)	Economic Sector*	Index Weight
- ALICORC1 PE**	S/.	9.30	0.00%	3.10%	-1.06%	-4.45%	94.74%	85,530	0.61	2.58	18.86	2,352.99	Industrial	3.53%
- ATACOB1 PE**	S/.	0.20	0.00%	8.11%	4.71%	-37.89%	47.37%	8,462	#N/A N/A	0.00	5.40	56.12	Mining	1.02%
- BACKUS11 PE**	S/.	24.00	0.00%	1.27%	0.13%	22.93%	52.63%	107,401	0.34	6.17	7.83	9,599.85	Industrial	0.82%
▲ BAP PE**	US\$	210.00	0.78%	1.23%	-2.48%	-2.67%	94.74%	190,617	1.28	2.87	-	16,749.91	Diverse	5.82%
▼ BVN PE**	US\$	14.18	-1.32%	-2.41%	0.93%	-11.60%	94.74%	560,864	1.56	0.81	-	3,908.50	Mining	5.88%
▲ CASAGRC1 PE**	S/.	3.03	1.00%	1.00%	-2.57%	-25.07%	94.74%	10,660	0.47	0.42	20.75	75.80	Agricultural	1.31%
▲ BBVAC1 PE**	S/.	3.28	0.92%	0.92%	-2.67%	-5.48%	89.47%	15,314	0.53	4.21	12.96	5,732.63	Finance	2.85%
▲ CORARE11 PE**	S/.	0.75	5.63%	13.64%	8.70%	12.95%	100.00%	42,902	0.95	8.17	3.99	324.47	Industrial	1.72%
▼ CPACASC1 PE**	S/.	6.40	-0.31%	8.47%	12.28%	-0.78%	100.00%	59,518	0.66	5.89	35.56	810.54	Industrial	2.38%
- CVERDEC1 PE**	US\$	17.80	0.00%	0.00%	-7.29%	-12.89%	94.74%	26,700	0.81	2.41	135.88	6,231.00	Mining	5.25%
- ENGEPEC1 PE**	S/.	2.48	-0.80%	0.00%	1.22%	32.62%	78.95%	4,148	0.74	4.12	13.60	2,090.73	Public Services	1.44%
▲ ENDISPC1**	S/.	7.15	9.66%	10.34%	11.89%	39.32%	73.68%	5,264	0.65	3.17	11.66	1,355.90	Public Services	0.98%
▲ FERREYC1 PE**	S/.	2.07	2.48%	4.55%	-1.90%	-12.14%	100.00%	97,478	0.81	8.49	7.24	599.79	Diverse	4.90%
▼ GRAMONC1 PE**	S/.	1.61	-1.83%	-1.83%	-4.73%	-19.10%	57.89%	41,554	0.99	0.00	-	416.89	Diverse	4.05%
▲ IFS PE**	US\$	39.20	0.13%	0.38%	-7.06%	-3.07%	84.21%	5,965	0.96	4.46	11.23	4,525.55	Diverse	7.22%
▲ INRETC1 PE**	US\$	36.50	0.03%	0.69%	-1.62%	30.12%	100.00%	3,832	0.77	0.93	30.49	3,752.47	Diverse	5.28%
▼ LUSURC1 PE**	S/.	22.20	-1.90%	-7.42%	36.62%	112.18%	94.74%	614,175	0.63	3.78	17.77	3,210.38	Public Services	1.81%
- MINSUR11 PE**	S/.	1.44	0.00%	-0.69%	-2.70%	9.09%	36.84%	926	1.36	0.00	2.66	1,232.89	Mining	3.09%
- PML PE**	US\$	0.10	0.00%	0.00%	5.56%	-45.71%	31.58%	2,620	1.34	0.00	-	25.06	Mining	2.12%
- RELAPAC1 PE**	S/.	0.11	0.00%	0.00%	-1.82%	-14.29%	100.00%	1,604	0.78	0.00	-	266.82	Industrial	2.12%
- SCCO PE**	US\$	34.50	0.00%	4.90%	-3.55%	18.39%	78.95%	34,845	1.31	5.93	18.35	26,670.53	Mining	2.14%
- SIDERC1 PE**	S/.	0.63	0.00%	14.55%	10.53%	30.43%	78.95%	44,101	1.44	16.21	6.85	229.74	Industrial	1.43%
▼ TV PE**	US\$	0.16	-1.84%	-5.88%	-8.57%	-46.13%	94.74%	18,076	1.65	0.00	-	130.26	Mining	2.93%
- UNACEMC1 PE**	S/.	2.10	0.00%	3.96%	-4.55%	-17.94%	63.16%	186,401	0.59	2.48	10.10	1,133.87	Industrial	3.00%
▼ VOLCABC1 PE**	S/.	0.44	-1.13%	-1.80%	-8.00%	-38.45%	100.00%	53,326	1.60	0.00	-	2,014.85	Mining	5.90%
- NEXAPEC1 PE**	S/.	3.40	0.00%	3.66%	3.03%	-7.38%	47.37%	76,899	1.13	0.00	17.74	1,334.66	Mining	1.56%

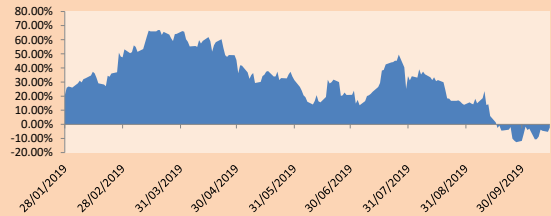
Quantity of shares: 26
 Source: Bloomberg, Economática
 * Bloomberg Industry Classification System
 ** PER is used in the stock market and original currency of the instrument
 *Legend: Variation 1D: 1 Day; 5D: 5 Days, 1M: 1 Month; YTD: Var.% 12/31/18 to date

Sectorial Indices

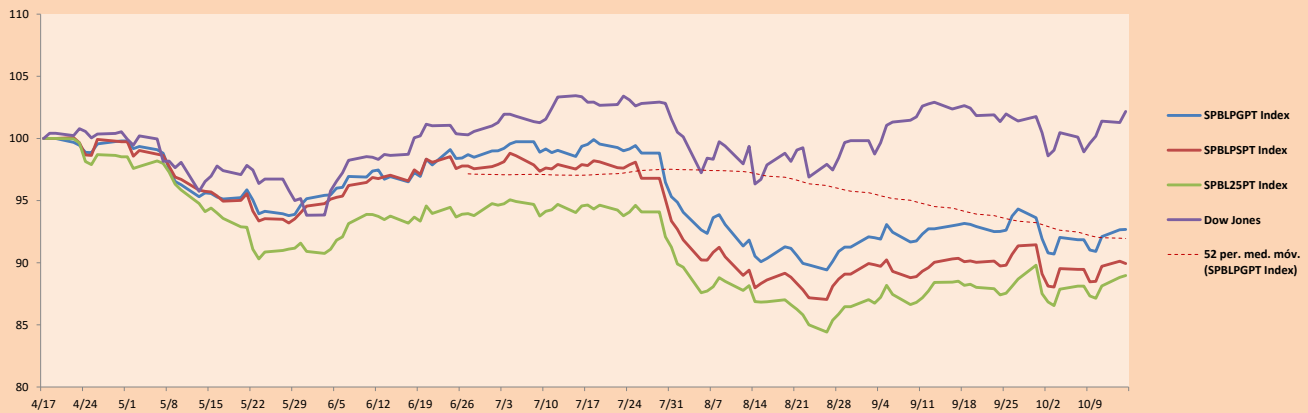
	Close	1D*	5D*	30D*	YTD*	Beta
▼ Mining Index	271.53	-0.67%	0.23%	-0.97%	-4.67%	1.45
▲ Consumer Index	1,127.18	0.01%	1.52%	-0.58%	12.09%	0.40
▲ Industrial Index	202.10	0.49%	4.09%	0.05%	-10.93%	0.56
▲ Banking and Financial Index	1,167.81	0.70%	0.63%	-1.35%	-2.68%	1.19
▼ Construction Index	220.76	-0.33%	3.97%	0.92%	-10.22%	0.50
▲ Services Index	612.49	0.06%	0.48%	15.48%	54.04%	0.25
▼ Juniors Index	17.01	-0.06%	-0.53%	-6.79%	-42.22%	0.28
▲ Electric Index	597.94	0.06%	0.48%	15.48%	54.04%	0.25

*Legend: Variation 1D: 1 Day; 5D: 5 Days, 1M: 1 Month; YTD: Var.% 12/31/18 to date

Correlation Graph of Returns of Mining Index against Metallic Index of London (3 months)



Indices (6 months)



Source: Bloomberg

Capital Market Laboratory Coordinator: Economist Bruno Bellido Anicama
 Collaboration: Juan Carlos Figueroa, Alonso Butter, Jeanpiere León y Manuel Muñoz Najara
 e-mail: pulsobursatil@ulima.edu.pe
 facebook: www.facebook.com/pulsobursatil.ul
 Phone number : 4376767 Annex: 35340

PULSO BURSÁTIL

SOVEREIGN RATING

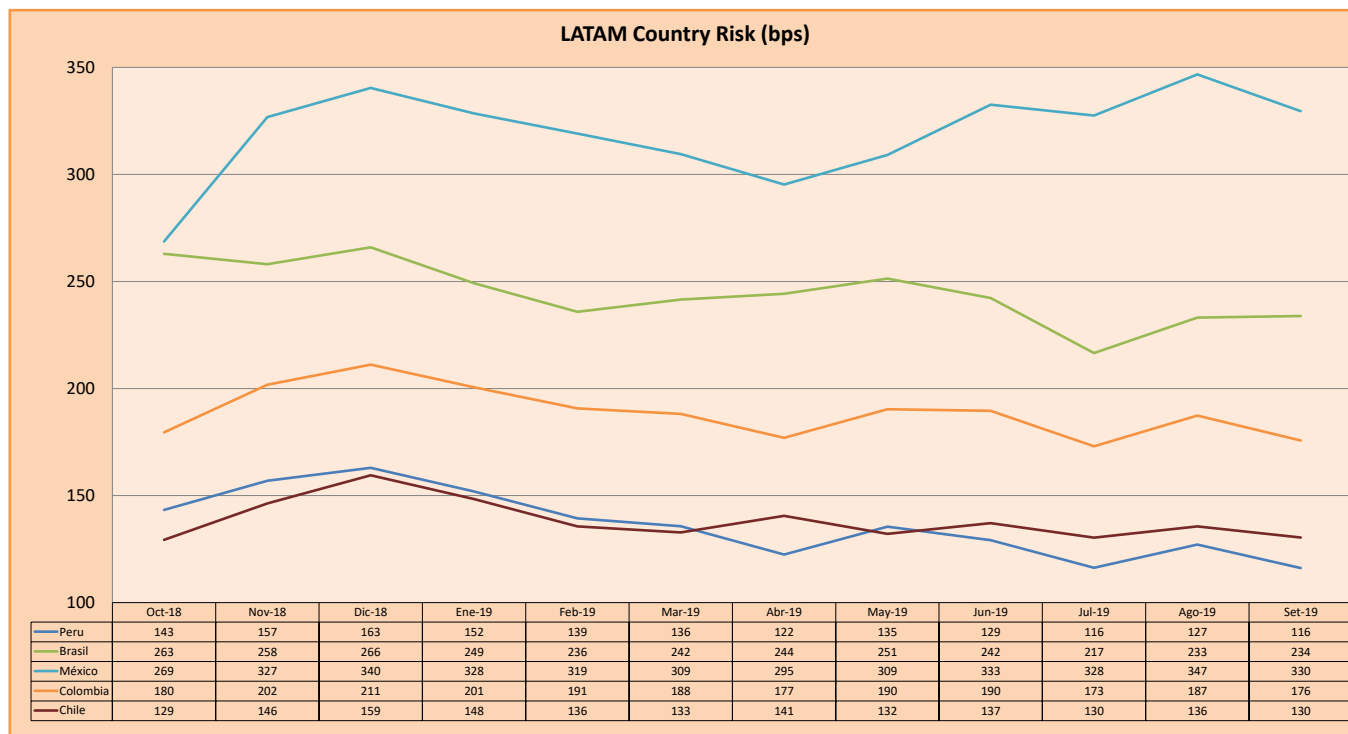
RISK RATINGS

Moody's	S&P	Fitch	
Aaa	AAA	AAA	Prime
Aa1	AA+	AA+	High credit quality
Aa2	AA	AA	
Aa3	AA-	AA-	
A1	A+	A+	Medium-high grade, with low credit risk
A2	A	A	
A3	A-	A-	
Baa1	BBB+	BBB+	Moderate Credit Risk
Baa2	BBB	BBB	
Baa3	BBB-	BBB-	
Ba1	BB+	BB+	It has speculative elements and it is subject to substantial credit risk
Ba2	BB	BB	
Ba3	BB-	BB-	
B1	B+	B+	It is considered speculative and it has high credit risk
B2	B	B	
B3	B-	B-	
Caa1	CCC+	CCC	Bad credit conditions and it is subject to high credit risk
Caa2	CCC		
Caa3	CCC-		
Ca	CC	DDD	Very close to default or in default
C	C		
	D		

Source: Bloomberg

Latin America Credit Rating			
Clasificadora de riesgo			
Country	Moody's	Fitch	S&P
Peru	A3	BBB+	BBB+
Mexico	A3	BBB	BBB+
Venezuela	C	WD	SD
Brazil	Ba2	BB-	BB-
Colombia	Baa2	BBB	BBB-
Chile	A1	A	A+
Argentina	Caa2 *	CC	CCC-
Panama	Baa1	BBB	BBB+

Source: Bloomberg



Source: BCRP

Capital Market Laboratory Coordinator: Economist Bruno Bellido Anicama
Support: Juan Carlos Figueroa, Alonso Butters, Jeanpierre León y Manuel Muñoz Najjar
e-mail: pulsobursatil@ulima.edu.pe
facebook: www.facebook.com/pulsobursatil.ul
Phone number : 4376767 Annex: 35340