



# PULSO BURSÁTIL

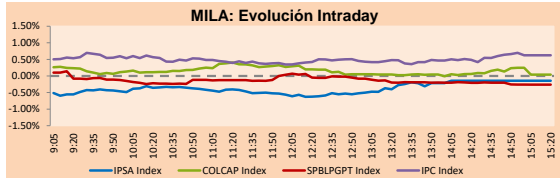
Lima, October 16, 2019

## MILA

Main Indexes	Close	1 D	5 D	1 M	YTD	
▼ IPSA (Chile)	5,150.11	-0.14%	2.34%	1.59%	0.88%	149.60
▼ IGPA (Chile)	25,938.17	-0.13%	2.22%	1.80%	-0.04%	187.47
▲ IGBC (Colombia)	12,850.46	-0.06%	-0.41%	-1.28%	15.31%	98.65
▲ COLCAP (Colombia)	1,579.51	0.04%	-0.65%	-1.32%	19.12%	94.00
▼ S&P/BVL (Perú)*	19,355.12	-0.26%	1.55%	-0.58%	0.02%	88.96
▼ S&P/BVL SEL (Perú)	503.58	-0.09%	1.58%	-0.49%	-1.71%	69.06
▼ S&P/BVL LIMA 25	24,631.58	-0.25%	1.63%	0.34%	-7.08%	83.67
▲ IPC (México)	43,538.49	0.68%	2.44%	1.63%	4.56%	279.58
▼ S&P MILA 40	614.82	-0.30%	2.21%	-1.14%	1.02%	260.57

\* Market Cap. Of the last price

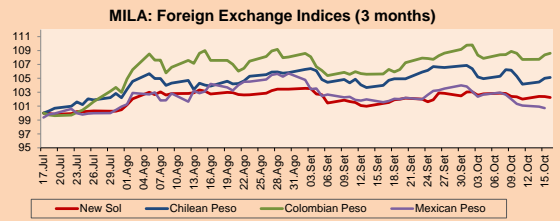
\*Legend: Variation 1D: 1 day; 5D: 5 days; 1M: 1 Month; YTD: Var%12/31/18 to date



Source: Bloomberg

Currency	Price	1D*	5D*	30 D*	YTD*
▼ New Sol (PEN)	3.3630	-0.13%	-0.12%	0.90%	-0.18%
▲ Chilean Peso (CLP)	717.07	0.12%	-0.98%	1.11%	3.38%
▲ Colombian Peso (COP)	3,459.27	0.22%	-0.24%	2.82%	6.45%
▼ Mexican Peso (MXN)	19.20	-0.21%	-1.89%	-1.23%	-2.29%

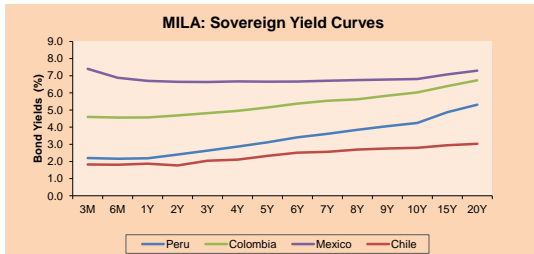
\*Legend: Variation 1D: 1 day; 5D: 5 days; 1M: 1 Month; YTD: Var%12/31/18 to date



Base: 17/07/19=100

Source: Bloomberg

Fixed Income		Bid Yield (%)	Ask Yield (%)	Duration	
PERU 4.125 08/25/2027	USD	112.122	2.44	2.40	6.76
PERU 7.35 07/21/25	USD	126.947	2.35	2.30	4.81
PERU 8.75 11/21/33	USD	165.159	3.05	3.02	9.38
PERU 6.55 03/14/37	USD	146.028	3.11	3.10	11.30
PERU 5.625 11/18/2050	USD	145.81	3.27	3.26	17.40
CHILE 2.25 10/30/22	USD	100.656	2.07	1.98	2.89
CHILE 3.875 08/05/20	USD	101.57	2.08	1.68	0.78
CHILE 3.625 10/30/2042	USD	110.88	2.97	2.97	15.97
COLOM 11.75 02/25/20	USD	103.392	2.49	1.57	0.35
COLOM 11.85 03/09/28	USD	162.899	3.27	3.21	6.06
COLOM 10.375 01/28/33	USD	162.3	4.28	4.13	8.48
COLOM 7.375 09/18/37	USD	142.737	4.02	4.00	11.31
COLOM 6.125 01/18/41	USD	130.673	3.98	3.96	13.04
MEX 4 10/02/23	USD	105.921	2.46	2.38	3.66
MEX5.55 01/45	USD	121.625	4.168	4.149	14.65



Source: Bloomberg

## Equity

Largest gains	Exchange	Amt.	Price	▲ %
DUNCANFOX	Santia.	CLP	1120.00	17.90
ESVAL-C	Santia.	CLP	0.02	6.25
MINCORI1	Lima	PEN	17.50	2.94
CORAREI1	Lima	PEN	0.77	2.67

Per Turnover	Exchange	Amount (US\$)
CHILE	Santia.	15,592,550
SOM-B	Santia.	10,435,885
PARAUCO	Santia.	9,744,406
FALABELLA	Santia.	7,515,602
CMPC	Santia.	6,270,547

Largest losses	Exchange	Amt.	Price	▼ %
BCM	#N/A Field Not	USD	1.56	-7.69
Fabricato	Colomb.	COP	5.22	-5.09
C	Lima	USD	70.00	-2.37
CAP	Santia.	CLP	6357.10	-1.74

Per Volume	Exchange	Volume
CHILE	Santia.	109,372,565
BSANTANDER	Santia.	53,846,453
ESVAL-C	Santia.	39,310,170
COLBUN	Santia.	16,740,080
ORO BLANCO	Santia.	15,817,868

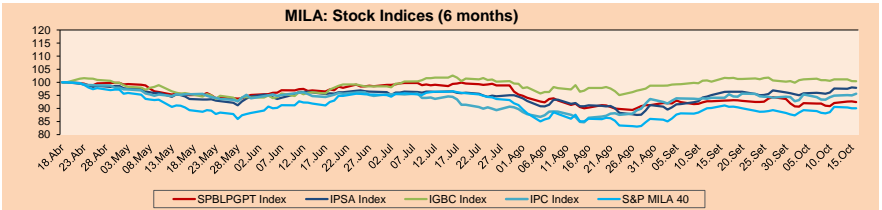
## MILA

Peru: The General BVL index ended today's session with a negative result of -0.26%. The index maintains a positive trend in local currency of + 0.02%, while the adjusted yield in dollars amounts to -0.06%. Then, the S&P / BVL Peru SEL varied by -0.09%, while the S & P / BVL LIMA 25 dropped -0.25%. The PEN spot reached \$ / 3.3630. Headline: Government will invest \$ / 20,000 million to improve 21 logistics corridors.

Chile: The IPSA index closed today with a negative yield of -0.14%. The sectors with the worst results were information on technology (-1.05%) and Energy (-0.77%). On the other hand, the values with the lowest results of the day were CAP SA (-1.74%) and Engie Energia Chile SA (-1.55%). Headline: Dollar in Chile extends upward streak due to strong fall in copper.

Colombia: The COLCAP index closed today with a positive performance of + 0.04%. The sectors with the best results were Industrial (+ 4.40%) and Financial (+ 0.25%). On the other hand, the values with the highest results of the day were Avianca Holdings SA (+ 5.49%) and Banco de Bogotá SA (+ 2.04%). Headline: They anticipate business for US \$ 3,000 million in road concessions.

Mexico: The MEXBOL index closed today with a positive yield of + 0.68%. The sectors with the best results were Communication Services (+ 2.72%) and Materials (+ 1.05%). On the other hand, the values with the best yields were Orbia Advance Corp SAB de CV (+ 3.73%) and América Móvil SAB de CV (+ 3.68%). Headline: Hydrocarbons Commission authorizes Pemex to exploit new field.

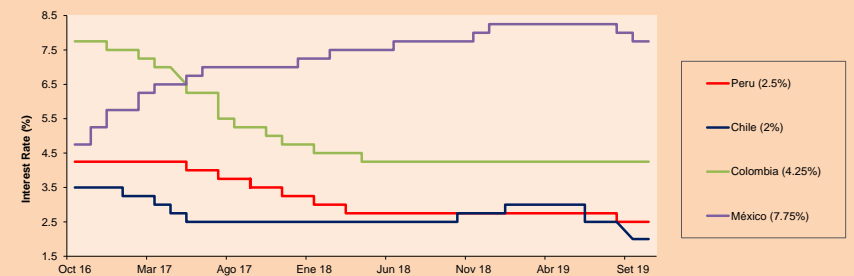


Base: 19/04/19=100

Source: Bloomberg

ETFs	Curr.	Close	1D	5D	30 D	YTD	Exchange
▲ iShares MSCI All Peru Caped Index Fund	USD	34.7	0.23%	3.00%	-0.72%	-0.43%	NYSE Arca
▼ iShares MSCI Mexico Capped	USD	38.65	-0.31%	3.15%	1.18%	-4.88%	Cboe BZX
▲ Global X MSCI Colombia	USD	12.772	-0.57%	0.43%	-2.73%	16.62%	NYSE Arca
▲ iShares MSCI Mexico Capped	USD	44.57	0.75%	4.58%	3.53%	10.43%	NYSE Arca
▲ iShares MSCI Emerging Markets	USD	42.04	0.29%	3.42%	0.31%	8.45%	NYSE Arca
▲ Vanguard FTSE Emerging Markets	USD	41.38	0.27%	3.17%	0.12%	10.95%	NYSE Arca
▲ iShares Core MSCI Emerging Markets	USD	50.42	0.28%	3.26%	0.22%	8.01%	NYSE Arca
▲ iShares JP Morgan Emerging Markets Bonds	USD	58.02	0.28%	2.27%	0.03%	4.98%	Cboe BZX
▼ Morgan Stanley Emerging Markets Domestic	USD	6.76	-0.88%	1.35%	2.77%	19.06%	New York

## MILA: Policy Rate



Source: Bloomberg

Capital Market Laboratory Codinador: Economist Bruno Bellido Anicama  
 Collaboration: Juan Carlos Figueroa, Alonso Butters, Jeanpiere León y Manuel Muñoz Najara  
 e-mail: pulsobursatil@ulima.edu.pe  
 facebook: www.facebook.com/pulsobursatil.ul  
 Phone number : 4376767 Annex: 35340

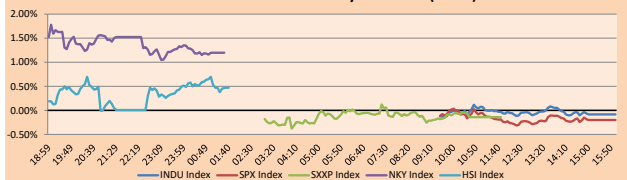
## PULSO BURSÁTIL

## WORLD

Main Indices	Close	1 D*	5 D*	1 M*	YTD*	Market Cap. (US\$ Mill.)
▼ Dow Jones (USA)	27,001.98	-0.08%	2.49%	-0.28%	15.75%	7,571,217
▼ Standard & Poor's 500 (USA)	2,989.69	-0.20%	2.41%	-0.28%	19.26%	25,916,291
▼ NASDAQ Composite (USA)	8,124.18	-0.30%	2.79%	-0.36%	22.44%	12,692,917
▼ Stoxx EUROPE 600 (Europe)	393.46	-0.14%	3.46%	1.01%	16.53%	9,514,292
▲ DAX (Germany)	12,670.11	0.32%	4.76%	2.34%	19.99%	1,065,428
▼ FTSE 100 (United Kingdom)	7,167.95	-0.61%	0.02%	-2.10%	6.54%	1,495,882
▼ CAC 40 (France)	5,696.90	-0.09%	3.60%	1.69%	20.42%	1,580,726
▼ IBEX 35 (Spain)	9,386.70	0.33%	4.39%	3.70%	9.92%	526,884
▲ MSCI AC Asia Pacific Index	158.72	0.56%	2.16%	-0.60%	8.19%	18,239,864
▲ HANG SENG (Hong Kong)	26,664.28	0.61%	3.82%	-0.47%	3.17%	2,432,926
▼ SHANGHAI SE Comp. (China)	2,978.71	-0.41%	1.84%	0.02%	19.44%	4,673,656
▲ NIKKEI 225 (Japan)	22,472.92	1.20%	4.10%	2.14%	12.28%	3,395,718
▲ BOVESPA (Brazil)	105,422.80	0.89%	4.12%	1.68%	19.95%	766,674
▼ Merval (Argentina)	30,759.21	-1.83%	1.66%	0.65%	1.54%	18,091

\*Legend: Variation 1D: 1 Day; 5D: 5 Days; 1M: 1 Month; YTD: Var.% 12/31/18 to date

Global Markets: Intraday Evolution (var %)

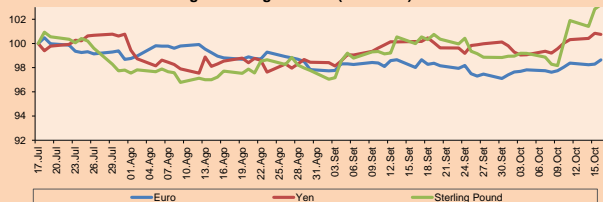


Source: Bloomberg

Currency	Price	1 D*	5 D*	1 M*	YTD*
▲ Euro	1.1072	0.35%	0.92%	0.65%	-3.44%
▼ Yen	108.7600	-0.09%	1.19%	0.59%	-0.85%
▲ Sterling Pound	1.2832	0.35%	5.13%	3.23%	0.61%
▲ Yuan	7.0933	0.16%	-0.55%	0.37%	3.12%
▼ Hong Kong Dollar	7.8450	0.00%	-0.01%	0.33%	0.17%
▼ Brazilian Real	4.1544	-0.62%	1.09%	1.81%	7.22%
▲ Argentine Peso	58.3470	0.13%	0.63%	3.69%	54.90%

\*Legend: Variation 1D: 1 Day; 5D: 5 Days; 1M: 1 Month; YTD: Var.% 12/31/18 to date

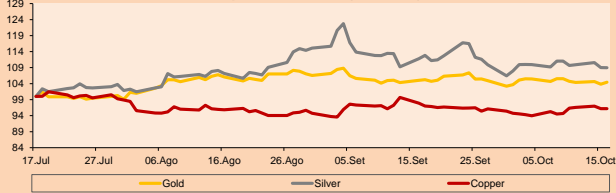
Foreign Exchange Indices (3 months)

Base: 17/07/19=100  
Source: Bloomberg

Commodities	Close	1 D*	5 D*	1 M*	YTD*
▲ Oro (US\$ Oz. T) (LME)	1,480.18	0.62%	-1.03%	-0.55%	16.20%
▼ Plata (US\$ Oz. T) (LME)	17.40	-0.04%	-1.86%	-2.52%	12.30%
▼ Cobres (US\$ TM) (LME)	5,739.75	0.00%	1.57%	-1.78%	-3.52%
▼ Zinc (US\$ TM) (LME)	2,458.25	0.00%	5.64%	3.77%	-2.39%
▲ Petróleo WTI (US\$ Barril) (NYM)	52.97	0.30%	0.72%	-15.48%	9.85%
▼ Estafío (US\$ TM) (LME)	16,645.00	0.00%	1.39%	-2.99%	-14.73%
▼ Plomo (US\$ TM) (LME)	2,144.50	0.00%	0.91%	2.89%	6.85%
▼ Azúcar #11 (US\$ Libra) (NYB-ICE)	12.35	-1.91%	-0.48%	0.73%	-6.08%
▼ Cacao (US\$ TM) (NYB-ICE)	2,515.00	-0.28%	4.49%	5.54%	1.90%
▼ Café Arábica (US\$ TM) (NYB-ICE)	93.55	-0.95%	-1.99%	-10.31%	-18.19%

\*Legend: Variación 1D: 1 Día; 5D: 5 Días; 1M: 1 Mes; YTD: Var.% 31/12/17 a la fecha

Principal Metals Index (3 months)

Base: 17/07/19=100  
Source: Bloomberg

## Equity

Alemania (Acciones del DAX Index)

Largest gains	Curr.	Price	▲%	Exchange	Largest losses	Curr.	Price	▼%	Exchange
FRE GY	EUR	44.32	2.38	Xetra	IFX GY	EUR	16.672	-1.88	Xetra
MTX GY	EUR	243.1	2.14	Xetra	ADS GY	EUR	281.6	-1.74	Xetra
DAI GY	EUR	48.8	1.56	Xetra	RWE GY	EUR	27.44	-0.76	Xetra
LHA GY	EUR	15.32	1.49	Xetra	BAYN GY	EUR	66.21	-0.65	Xetra

Europe (Stocks from STOXX EUROPE 600)

Largest gains	Curr.	Price	▲%	Exchange	Largest losses	Curr.	Price	▼%	Exchange
TKA GY	EUR	13.19	4.64	Xetra	IMCD NA	EUR	67.25	-5.21	EN Amsterdam
ATO FP	EUR	66.84	3.89	EN Paris	HSX LN	Gbp	1518	-5.18	Londres
SALM NO	NOK	426.5	3.67	Oslo	BBA LN	Gbp	302.2	-5.15	Londres
DHER GY	EUR	42.26	3.15	Xetra	ENX FP	EUR	71.1	-4.63	EN Paris

## Global Overview:

## United States:

The US market closed the session with its main indexes downward, because weak economic data on the economy and greater geopolitical tensions were reported, especially with Turkey, after this country decided to attack the Kurdish enclaves in northern Syria, which caused President Trump to approve sanctions and promise to destroy the Turkish economy. In corporate news, the federal communications commission approved the merger of T-Mobile US (+ 0.34%) and Sprint Corp (-0.62%), which only needs the approval of the attorney generals, to finish approving the operation of 26 billion dollars between the third and fourth telephone line operator in the US, on the other hand, IBM Corp (-0.62%) reported that it exceeded the quarterly earnings initially estimated by the market, although the total income of The company was 18.03 billion dollars, a 3.9% drop. In the fixed-income market, the 10-year treasury bond yield fell from 1.778% to 1.748% on the day, after it was reported that retail sales fell -0.3% and cut a positive 7-month streak at rise.

## Europe:

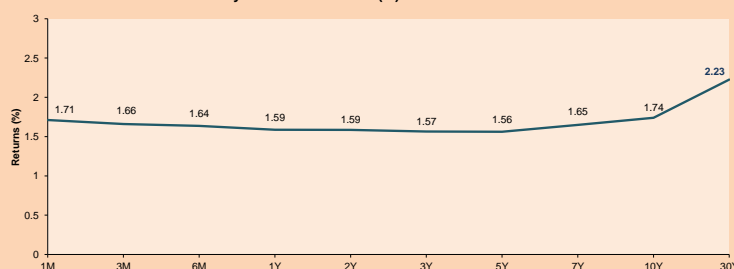
European markets closed the day today down. Its main index, Stoxx 50 ended the day with a negative variation of -0.14%. On the other hand, British Prime Minister Boris Johnson will ask for an extension of Brexit if an agreement with Brussels is not reached before October 19, according to the House of Commons. The president of the European Council, Donald Tusk, set a date and time to know when Brexit could be produced. "In theory, everything should be clear in seven or eight hours," Tusk said in statements collected by Polish television. "The negotiations are ongoing, everything is going well, but everything is possible with our British partners," he added. In addition, inflation in the eurozone reaches its lowest level in the last three years. The year-on-year inflation rate in the euro zone stood at 0.8% last September, two tenths below the previous month's reading. This is the smallest rise in prices in the eurozone since November 2016. These data reflect a 1.8% drop in energy prices, compared to a 0.6% decrease in August, while fresh food prices increased by 0, 7%, after rising 2.5% the previous month.

## Asia:

The Asian markets ended the upward day caused by a feeling of improvement in the Brexit negotiations and the Trade War between the United States and China. The main Asia / Pacific indexes had the following results, Nikkei 225 up + 1.20%, ASX 200 up + 1.27% and Hang Seng up + 0.61%. Regarding the Commercial War, an IMF report was issued stating that this year's global growth will be slower since the financial crisis of 2008-2009 added that the outlook could darken considerably if trade tensions remain unresolved. Southeast Asian stocks reached a maximum of two weeks due to gains and improvements in industrial and financial companies. In other news, private equity giant KKR & Co and its partners canceled the highest price of the year in Australia because the CEO of Latitude Financial withdrew the initial public offering (IPO) due to the low price and not reflecting its true value. The companies with the best results of the day were New World Development (+4.06%) and Sun Hung Kai Properties (+ 2.95%) with respect to the Hong Kong Hang Seng.

ETFs	Curr.	Close	1D	5D	30 D	YTD	Exchange
SPDR S&P 500 ETF TRUST	USD	298.40	-0.16%	2.45%	-0.13%	21.06%	NYSE Arca
ISHARES MSCI EMERGING MARKET	USD	42.04	0.29%	3.42%	0.31%	8.45%	NYSE Arca
ISHARES IBOXX HIGH YLD CORP	USD	86.95	-0.08%	0.75%	-0.19%	11.50%	NYSE Arca
FINANCIAL SELECT SECTOR SPDR	USD	28.02	-0.25%	3.66%	-0.80%	19.44%	NYSE Arca
VANECK GOLD MINERS	USD	26.71	1.99%	-4.78%	-2.13%	26.65%	NYSE Arca
ISHARES RUSSELL 2000 ETF	USD	151.55	0.11%	3.00%	-3.68%	14.29%	NYSE Arca
SPDR GOLD SHARES	USD	140.41	0.57%	-1.15%	-0.64%	15.80%	NYSE Arca
ISHARES 20+ YEAR TREASURY BO	USD	139.92	0.12%	-3.07%	1.36%	17.26%	NASDAQ GM
INVECO QQQ TRUST SERIES 1	USD	193.04	-0.25%	3.10%	0.91%	25.90%	NASDAQ GM
ISHARES NASDAQ BIOTECHNOLOGY	USD	102.35	-0.11%	4.71%	-2.59%	6.29%	NASDAQ GM
ENERGY SELECT SECTOR SPDR	USD	57.29	-1.39%	1.56%	-8.42%	2.53%	NYSE Arca
PROSHARES ULTRA VIX ST FUTUR	USD	22.06	-1.87%	-22.38%	-14.00%	-73.01%	NYSE Arca
UNITED STATES OIL FUND LP	USD	11.14	0.72%	1.36%	-13.17%	15.32%	NYSE Arca
ISHARES MSCI BRAZIL ETF	USD	42.36	1.34%	2.99%	0.02%	12.30%	NYSE Arca
SPDR S&P OIL & GAS EXP & PR	USD	20.85	-0.71%	1.51%	-19.37%	-20.67%	NYSE Arca
UTILITIES SELECT SECTOR SPDR	USD	63.45	0.22%	-1.21%	1.51%	22.69%	NYSE Arca
ISHARES US REAL ESTATE ETF	USD	93.40	0.08%	0.27%	1.72%	27.39%	NYSE Arca
SPDR S&P BIOTECH ETF	USD	78.73	-0.16%	5.37%	-6.11%	9.73%	NYSE Arca
ISHARES IBOX INVESTMENT GRA	USD	126.80	0.11%	-0.60%	1.46%	15.37%	NYSE Arca
ISHARES JP MORGAN USD EMERGI	USD	113.02	-0.16%	-0.14%	0.29%	12.67%	NASDAQ GM
REAL ESTATE SELECT SECT SPDR	USD	39.27	-0.13%	0.03%	1.39%	29.27%	NYSE Arca
ISHARES CHINA LARGE-CAP ETF	USD	41.52	-0.05%	3.16%	0.14%	7.32%	NYSE Arca
CONSUMER STAPLES SPDR	USD	60.34	0.10%	-0.72%	0.41%	21.10%	NYSE Arca
VANECK JR GOLD MINERS	USD	36.63	2.38%	-3.81%	-1.98%	21.21%	NYSE Arca
SPDR BBG BARC HIGH YIELD BND	USD	108.35	-0.03%	0.87%	-0.25%	12.13%	NYSE Arca
VANGUARD REAL ESTATE ETF	USD	93.20	0.01%	0.30%	1.63%	28.11%	NYSE Arca
GRAYSCALE BITCOIN TRUST BTC	USD	8.76	-5.60%	-15.61%	-28.49%	120.93%	OTC US

USA Treasury Bonds Yield Curve (%)



Source: Bloomberg

Capital Market Laboratory Coordinator: Economist Bruno Bellido Anicama  
Collaboration: Juan Carlos Figueroa, Alonso Butters, Jeanpierre León y Manuel Muñoz Najar  
e-mail: pulsoburstatil@ulima.edu.pe  
facebook: www.facebook.com/pulsoburstatil  
Phone number: 4376767 Annex: 35340

## PULSO BURSÁTIL

## LIMA

## Stocks

Ticker	Currency	Price	1D*	5D*	30D*	YTD*	Frequency	Volume (US\$)	Beta	Dividend Yield (%)	Price Earning	Market Cap. (M US\$)	Economic Sector*	Index Weight
▼ ALICORC1 PE**	S/.	9.26	-0.43%	2.89%	-1.38%	-4.86%	94.74%	392,178	0.61	2.59	18.78	2,345.92	Industrial	3.53%
▼ ATACOB1 PE**	S/.	0.20	0.00%	8.11%	4.71%	-37.89%	47.37%	1,160	#N/A	0.00	5.41	56.19	Mining	1.02%
- BACKUS1 PE**	S/.	24.00	0.00%	0.00%	0.13%	22.93%	57.89%	99,521	0.34	6.17	7.83	9,612.13	Industrial	0.82%
▼ BAP PE**	US\$	209.00	-0.48%	1.95%	-3.15%	-3.14%	100.00%	2,960,889	1.28	2.89	-	16,670.15	Diverse	5.82%
▲ BVN PE**	US\$	14.20	0.14%	-1.53%	-0.63%	-11.48%	94.74%	34,838	1.55	0.81	-	3,914.01	Mining	5.88%
- CASAGRC1 PE**	S/.	3.03	0.00%	1.00%	-1.94%	-25.07%	94.74%	6,358	0.47	0.42	20.75	75.89	Agricultural	1.31%
- BBVAC1 PE**	S/.	3.28	0.00%	1.86%	-2.67%	-5.48%	89.47%	20,251	0.54	4.21	12.96	5,739.96	Finance	2.85%
▲ CORARE1 PE**	S/.	0.77	2.67%	16.67%	11.59%	15.96%	100.00%	263,975	0.96	7.96	4.10	326.08	Industrial	1.72%
- CPACASC1 PE**	S/.	6.40	0.00%	10.34%	12.28%	-0.78%	100.00%	52,344	0.66	5.89	35.56	811.69	Industrial	2.38%
▼ CVERDEC1 PE**	US\$	17.50	-1.69%	0.00%	-8.85%	-14.36%	100.00%	72,480	0.81	2.45	133.59	6,125.98	Mining	5.25%
- ENGEPEC1 PE**	S/.	2.48	0.00%	-0.80%	0.81%	32.62%	84.21%	2,064	0.74	4.12	13.60	2,093.40	Public Services	1.44%
- ENDISPC1**	S/.	7.15	0.00%	9.66%	11.89%	39.32%	73.68%	42,522	0.65	3.17	11.66	1,357.64	Public Services	0.98%
▼ FERREY1 PE**	S/.	2.06	-0.48%	4.57%	-2.37%	-12.56%	100.00%	265,470	0.81	8.53	7.20	597.65	Diverse	4.90%
- GRAMONC1 PE**	S/.	1.61	0.00%	0.62%	-4.73%	-19.10%	63.16%	47,211	0.99	0.00	-	417.42	Diverse	4.05%
▲ IFS PE**	US\$	39.55	0.89%	0.25%	-5.38%	-2.21%	89.47%	95,901	0.96	4.42	11.32	4,565.96	Diverse	7.22%
▲ INRETC1 PE**	US\$	36.48	-0.05%	0.63%	-1.67%	30.05%	100.00%	52,474	0.76	0.93	30.44	3,750.41	Diverse	5.28%
▼ LUSURC1 PE**	S/.	22.00	-0.90%	-7.91%	35.38%	110.26%	94.74%	1,003,887	0.64	3.82	17.61	3,185.53	Public Services	1.81%
- MINSUR1 PE**	S/.	1.44	0.00%	-0.69%	-2.70%	9.09%	36.84%	951	1.36	0.00	2.66	1,234.47	Mining	3.09%
- PML PE**	US\$	0.10	0.00%	0.00%	11.76%	-45.71%	26.32%	2,620	1.34	0.00	-	25.06	Mining	2.12%
- RELAPAC1 PE**	S/.	0.11	0.00%	-0.92%	-3.57%	-14.29%	100.00%	8,665	0.79	0.00	-	267.16	Industrial	2.12%
▼ SCCO PE**	US\$	34.45	-0.14%	5.19%	-1.85%	18.22%	84.21%	4,134	1.30	5.93	18.32	26,631.88	Mining	2.14%
▲ SIDERC1 PE**	S/.	0.64	1.59%	10.34%	12.28%	32.51%	78.95%	31,955	1.44	15.95	6.96	233.68	Industrial	1.43%
- TV PE**	US\$	0.16	0.00%	-3.03%	-8.57%	-46.13%	89.47%	2,372	1.65	0.00	-	130.26	Mining	2.93%
▲ UNACEMC1 PE**	S/.	2.11	0.48%	4.46%	-4.09%	-17.55%	63.16%	9,965,769	0.59	2.46	10.15	1,140.72	Industrial	3.00%
▼ VOLCABC1 PE**	S/.	0.43	-1.60%	-0.23%	-8.51%	-39.44%	100.00%	124,344	1.62	0.00	-	2,012.34	Mining	5.90%
- NEXAPEC1 PE**	S/.	3.40	0.00%	3.66%	3.03%	-7.38%	42.11%	76,997	1.13	0.00	17.76	1,336.36	Mining	1.56%

Quantity of shares: 26

Source: Bloomberg, Economática

\* Bloomberg Industry Classification System

\*\* PER is used in the stock market and original currency of the instrument

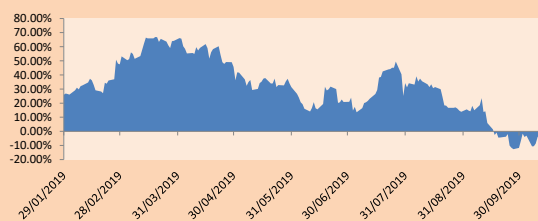
\*Legend: Variation 1D: 1 Day; 5D: 5 Days; 1M: 1 Month; YTD: Var.% 12/31/18 to date

## Sectorial Indices

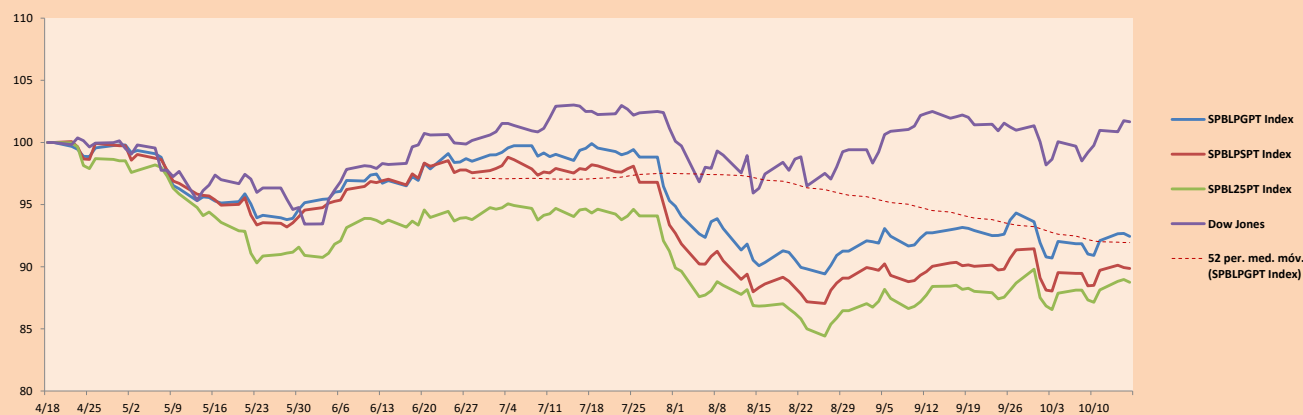
	Close	1D*	5D*	30D*	YTD*	Beta
▼ Mining Index	270.80	-0.27%	1.18%	-1.44%	-4.93%	1.45
▼ Consumer Index	1,124.27	-0.26%	1.39%	-0.94%	11.80%	0.41
▲ Industrial Index	202.21	0.05%	4.96%	0.08%	-10.88%	0.56
▼ Banking and Financial Index	1,162.07	-0.49%	1.65%	-2.39%	-3.16%	1.19
▲ Construction Index	221.38	0.28%	5.22%	1.21%	-9.96%	0.50
▲ Services Index	610.71	-0.29%	-0.23%	15.58%	53.60%	0.25
▼ Juniors Index	16.99	-0.12%	1.07%	-5.24%	-42.29%	0.28
▼ Electric Index	596.20	-0.29%	-0.23%	15.58%	53.59%	0.25

\*Legend: Variation 1D: 1 Day; 5D: 5 Days; 1M: 1 Month; YTD: Var.% 12/31/18 to date

## Correlation Graph of Returns of Mining Index against Metallic Index of London (3 months)



## Indices (6 months)



Source: Bloomberg

Capital Market Laboratory Coordinator: Economist Bruno Bellido Anicama  
 Collaboration: Juan Carlos Figueroa, Alonso Butter, Jeanpiere León y Manuel Muñoz Najar  
 e-mail: pulsohorsatil@ulima.edu.pe  
 facebook: www.facebook.com/pulsohorsatil.ul  
 Phone number : 4376767 Annex: 35340

The content of this document is just for informational purposes. The information and opinions expressed should not be considered as recommendations for future decisions. Under any circumstances, the Capital Market Laboratory of University of Lima will be responsible for the use of the statements in this document.

# PULSO BURSÁTIL

## SOVEREIGN RATING

### RISK RATINGS

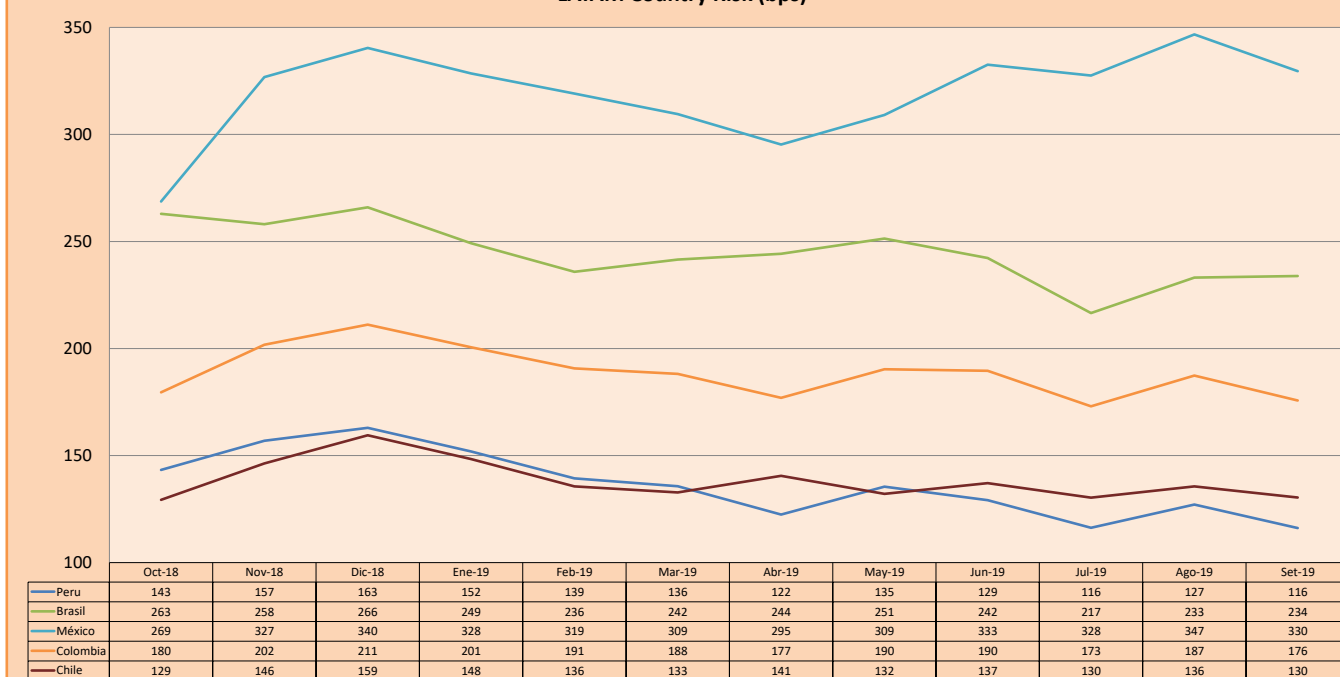
Moody's	S&P	Fitch	
Aaa	AAA	AAA	Prime
Aa1	AA+	AA+	High credit quality
Aa2	AA	AA	
Aa3	AA-	AA-	
A1	A+	A+	Medium-high grade, with low credit risk
A2	A	A	
A3	A-	A-	
Baa1	BBB+	BBB+	Moderate Credit Risk
Baa2	BBB	BBB	
Baa3	BBB-	BBB-	
Ba1	BB+	BB+	It has speculative elements and it is subject to substantial credit risk
Ba2	BB	BB	
Ba3	BB-	BB-	
B1	B+	B+	It is considered speculative and it has high credit risk
B2	B	B	
B3	B-	B-	
Caa1	CCC+	CCC	Bad credit conditions and it is subject to high credit risk
Caa2	CCC	CCC	
Caa3	CCC-	CCC	
Ca	CC	CC	Very close to default or in default
C	C	C	
	D	DDD	
		DD	
		D	

Source: Bloomberg

Latin America Credit Rating			
Clasificadora de riesgo			
Country	Moody's	Fitch	S&P
Peru	A3	BBB+	BBB+
Mexico	A3	BBB	BBB+
Venezuela	C	WD	SD
Brazil	Ba2	BB-	BB-
Colombia	Baa2	BBB	BBB-
Chile	A1	A	A+
Argentina	Caa2 *-	CC	CCC-
Panama	Baa1	BBB	BBB+

Source: Bloomberg

### LATAM Country Risk (bps)



Source: BCRP

Capital Market Laboratory Coordinator: Economist Bruno Bellido Anicama  
 Support: Juan Carlos Figueroa, Alonso Butters, Jeanpierre León y Manuel Muñoz Najara  
 e-mail: pulsobursatil@ulima.edu.pe  
 facebook: www.facebook.com/pulsobursatil.ul  
 Phone number : 4376767 Annex: 35340

The content of this document is just for informational purposes. The information and opinions expressed should not be considered as recommendations for future decisions. Under any circumstances, the Capital Market Laboratory of University of Lima will be responsible for the use of the statements in this document.