



PULSO BURSÁTIL

Lima, October 31, 2019

MILA

Main Indexes	Close	1 D	5 D	1 M	YTD	Cap. Burs. (US\$ bill)
▼ IPSA (Chile)	4,744.13	-2.80%	-3.39%	-6.22%	-7.08%	131.94
▼ IGPA (Chile)	23,838.15	-2.87%	-3.72%	-6.35%	-8.14%	164.84
▲ IGBC (Colombia)	13,272.19	0.07%	0.92%	3.43%	19.10%	104.29
▲ COLCAP (Colombia)	1,633.15	-0.05%	1.06%	3.50%	23.17%	99.55
▲ S&P/BVL (Perú)*	19,904.87	1.09%	1.55%	1.54%	2.87%	91.25
▲ S&P/BVL SEL (Perú)	516.26	0.47%	1.67%	0.75%	0.76%	71.84
▲ S&P/BVL LIMA 25	24,849.55	0.43%	0.70%	-0.31%	-6.26%	85.94
▼ IPC (México)	43,337.28	-0.92%	-1.00%	0.76%	4.08%	285.42
▼ S&P MILA 40	593.58	-2.31%	-2.98%	-1.44%	-2.47%	250.01

Equity

Largest gains	Exchange	Amt.	Price	▲ %	Largest losses	Exchange	Amt.	Price	▼ %
MINCORI1	Lima	PEN	20.00	6.38	CONCONCRET	Colomb.	COP	420.00	-8.70
CNEC	Colomb.	COP	13000.00	6.21	ETB	Colomb.	COP	240.00	-6.98
BVN	Lima	USD	15.50	6.16	ENKA	Colomb.	COP	10.30	-6.36
BUENAVC1	Lima	PEN	51.10	6.02	VOLCABC1	Lima	PEN	0.39	-4.44

Per Turnover

	Exchange	Amount (US\$)
EPISA	Colomb.	38,007,930
PROMIGAS	Colomb.	22,943,484
PFBCOLOM	Colomb.	15,984,939
	Colomb.	14,762,770
CNEC	Colomb.	12,923,144

Per Volume

	Exchange	Volume
ENKA	Colomb.	26,788,607
ETB	Colomb.	18,263,313
CONCONCRET	Colomb.	15,600,340
RELAPAC1	Lima	12,145,000
ECOPETROL	Colomb.	10,165,290

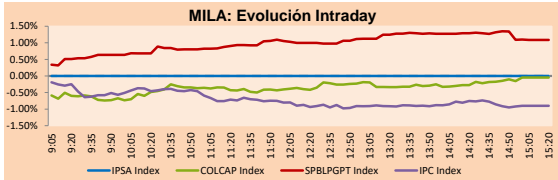
MILA

Peru: The General BVL index ended today's session with a positive result of + 1.09%. The index maintains a positive trend in local currency of + 2.87%, while the adjusted yield in dollars amounts to + 3.46%. Then, the S&P / BVL Peru SEL varied by + 0.47%, while the S&P / BVL LIMA 25 varied by + 0.43%. The PEN spot reached S / 3.3440. Headline: Tia María: Cáceres Lica will present a precautionary measure to reverse the license.

Chile: The IPSA index did not quote this session by national holiday. Headline: Interior: About thirty civilians injured and more than 400 arrested in the last hours.

Colombia: The COLCAP index closed the day today with a negative return of -0.05%. The most affected sectors were Communication services (-6.98%) and public services (-0.83%). On the other hand, the values with the worst results of the day were Concreto SA (-8.70%) and Empresa de Telecomunicaciones (-6.98%). Headline: Uber will stop investing 40 million dollars in Colombia.

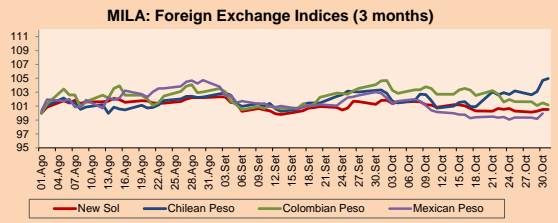
Mexico: The MEXBOL index closed today with a negative yield of -0.92%. The sectors with the worst results were Products of first necessity (-1.56%) and Communication services (-1.33%). On the other hand, the values with the worst yields were Kimberly-Clark de México SAB (-4.34%) and Genera SAB de CV (-3.49%). Headline: The Treasury sees signs of an economic "improvement" for the following months.



Source: Bloomberg

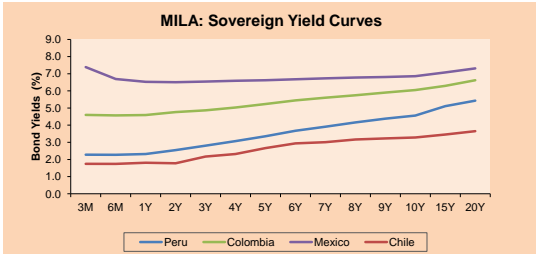
Currency	Price	1D*	5D*	30 D*	YTD*
▲ New Sol (PEN)	3,344.9	0.00%	-0.14%	-1.26%	-0.72%
▲ Chilean Peso (CLP)	740.50	0.26%	2.24%	1.60%	6.76%
▼ Colombian Peso (COP)	3,379.55	-0.30%	-0.78%	-3.33%	3.99%
▲ Mexican Peso (MXN)	19.23	0.79%	0.51%	-2.98%	-2.12%

*Legend: Variation 1D: 1 day; 5D: 5 days; 1M: 1 Month; YTD: Var%12/31/18 to date

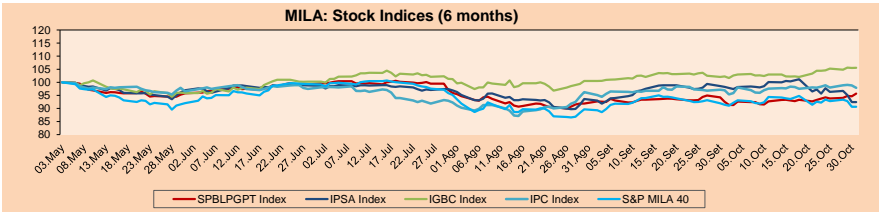


Base: 01/08/19=100
Source: Bloomberg

Fixed Income	Bid Yield (%)	Ask Yield (%)	Duration
PERU 4.125 08/25/2027	USD 112.171	2.41	2.40 6.71
PERU 7.35 07/21/25	USD 126.798	2.34	2.29 4.76
PERU 8.75 11/21/33	USD 165.176	3.03	3.01 9.33
PERU 6.55 03/14/37	USD 146.211	3.10	3.08 11.23
PERU 5.625 11/18/2050	USD 146.389	3.24	3.24 17.34
CHILE 2.25 10/30/22	USD 100.478	2.13	2.04 2.88
CHILE 3.875 08/05/20	USD 101.439	2.09	1.79 0.74
CHILE 3.625 10/30/2042	USD 110.169	3.01	3.01 16.12
COLOM 11.75 02/25/20	USD 103.237	1.59	0.79 0.31
COLOM 11.85 03/09/28	USD 162.648	3.26	3.19 6.02
COLOM 10.375 01/28/33	USD 160.273	4.36	4.32 8.44
COLOM 7.375 09/18/37	USD 142.183	4.05	4.03 11.24
MEX 4 10/02/23	USD 106.185	2.38	2.30 3.62
MEX5.55 01/45	USD 121.817	4.15	4.143 14.6



Source: Bloomberg

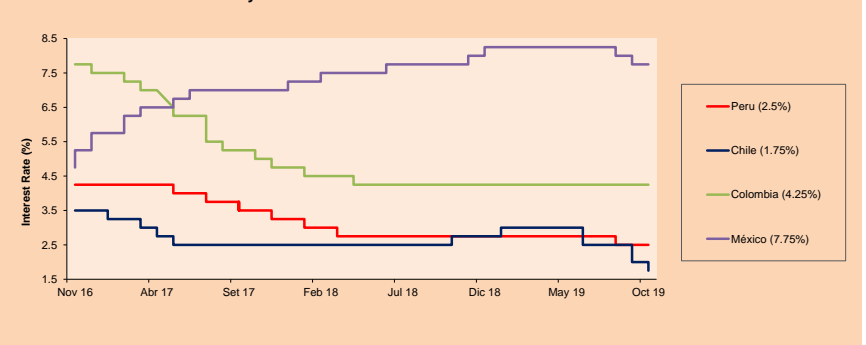


Base: 06/05/19=100
Source: Bloomberg

ETFs

ETFs	Curr.	Close	1D	5D	30 D	YTD	Exchange
▲ iShares MSCI All Peru Caped Index Fund	USD	35.36	0.65%	1.46%	4.06%	1.46%	NYSE Arca
iShares MSCI Mexico Capped	USD	34.525	-0.68%	-6.64%	-7.29%	-15.03%	Cboe BZX
▲ Global X MSCI Colombia	USD	13.2665	0.21%	1.43%	5.17%	21.13%	NYSE Arca
iShares MSCI Mexico Capped	USD	44.31	-1.27%	-1.09%	4.60%	9.79%	NYSE Arca
▼ iShares MSCI Emerging Markets	USD	42.58	-0.79%	0.42%	4.93%	9.84%	NYSE Arca
▼ Vanguard FTSE Emerging Markets	USD	41.85	-0.78%	0.26%	4.68%	12.21%	NYSE Arca
▼ iShares Core MSCI Emerging Markets	USD	51.17	-0.74%	0.33%	4.92%	9.61%	NYSE Arca
▼ iShares JP Morgan Emerging Markets Bonds	USD	58.36	-0.60%	0.01%	2.95%	5.60%	Cboe BZX
▼ Morgan Stanley Emerging Markets Domestic	USD	6.95	-0.29%	0.72%	5.62%	22.41%	New York

MILA: Policy Rate



Source: Bloomberg

Capital Market Laboratory Coodinator: Economist Bruno Bellido Anicama
Collaboration: Juan Carlos Figueroa, Alonso Butters, Jeanpierre León y Manuel Muñoz Najar
e-mail: pulsobursatil@ulima.edu.pe
facebook: www.facebook.com/pulsobursatil.ul
Phone number : 4376767 Annex: 35340

PULSO BURSÁTIL

LIMA

Stocks

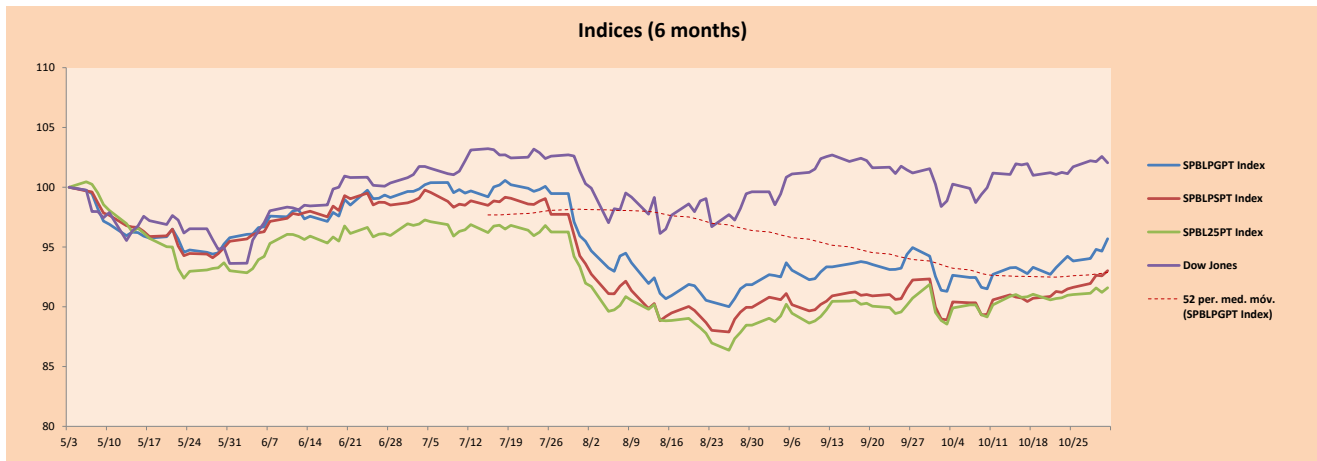
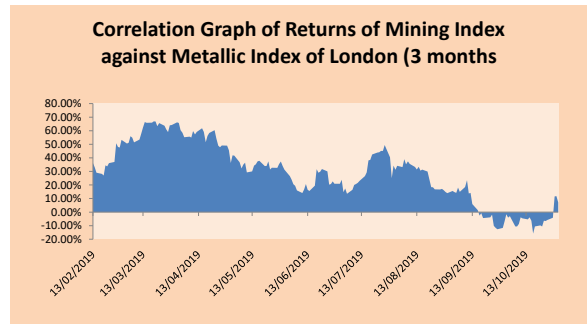
Ticker	Currency	Price	1D*	5D*	30D*	YTD*	Frequency	Volume (US\$)	Beta	Dividend Yield (%)	Price Earning	Market Cap. (M US\$)	Economic Sector*	Index Weight
▲ ALICORC1 PE**	S/.	9.17	0.11%	-0.65%	0.99%	-5.78%	100.00%	1,473,859	0.58	2.62	18.60	2,335.82	Industrial	3.53%
▲ ATACOCB1 PE**	S/.	0.19	0.00%	-0.54%	0.00%	-42.55%	47.37%	3,025	#N/A #N/A	0.00	5.03	158.93	Mining	1.02%
- BACKUSI1 PE**	S/.	23.80	0.00%	-0.83%	0.42%	21.91%	89.47%	499,613	0.33	6.22	7.76	9,029.57	Industrial	0.82%
▲ BAP PE**	US\$	214.15	1.40%	-0.07%	5.93%	0.39%	100.00%	2,823,220	1.28	3.93	-	17,080.92	Diverse	5.82%
- BVN PE**	US\$	15.50	6.16%	11.99%	3.89%	-3.37%	94.74%	446,978	1.50	0.74	-	4,272.34	Mining	5.88%
- CASAGRC1 PE**	S/.	2.97	0.00%	0.34%	-8.62%	-26.56%	89.47%	1,828	0.51	0.43	17.43	74.79	Agricultural	1.31%
- BBVAC1 PE**	S/.	3.50	0.00%	4.17%	8.02%	0.86%	100.00%	74,771	0.55	3.94	12.84	6,158.10	Finance	2.85%
▼ CORAREI1 PE**	S/.	0.80	-1.23%	2.56%	23.08%	20.48%	100.00%	32,398	0.92	7.66	3.89	340.91	Industrial	1.72%
- CPACASC1 PE**	S/.	6.76	0.00%	4.81%	15.56%	4.81%	100.00%	23,399	0.69	5.58	37.56	861.70	Industrial	2.38%
▼ CVERDEC1 PE**	US\$	17.50	-2.72%	-2.23%	0.00%	-14.36%	94.74%	30,065	0.83	2.45	-	6,125.98	Mining	5.25%
- ENGEPEC1 PE**	S/.	2.44	0.83%	0.00%	-1.21%	30.48%	94.74%	15,014	0.75	3.51	13.65	2,070.78	Public Services	1.44%
- ENDISPC1**	S/.	7.15	0.00%	0.00%	10.34%	39.32%	73.68%	15,113	0.65	0.00	11.20	1,364.98	Public Services	0.98%
▲ FERREYC1 PE**	S/.	2.17	5.34%	4.83%	4.33%	-7.89%	100.00%	1,481,306	0.80	8.10	8.15	632.97	Diverse	4.90%
▲ GRAMONC1 PE**	S/.	1.64	3.80%	4.46%	2.50%	-17.59%	94.74%	5,133	0.90	0.00	-	427.50	Diverse	4.05%
▲ IFS PE**	US\$	41.70	0.60%	1.83%	4.25%	3.11%	100.00%	66,620	0.92	4.20	11.87	4,814.17	Diverse	7.22%
▼ INRETC1 PE**	US\$	35.00	-0.82%	0.00%	-1.13%	24.78%	100.00%	3,648,715	0.73	0.97	29.05	3,598.26	Diverse	5.28%
▼ LUSURC1 PE**	S/.	23.80	-0.21%	0.13%	17.24%	127.47%	100.00%	608,217	0.64	3.53	19.05	3,464.81	Public Services	1.81%
- MINSUR11 PE**	S/.	1.44	0.00%	0.00%	-0.69%	9.09%	52.63%	4,739	1.34	0.00	2.67	1,241.15	Mining	3.09%
- PML PE**	US\$	0.09	0.00%	0.00%	-10.53%	-51.43%	15.79%	3,198	1.35	0.00	-	22.43	Mining	2.12%
▲ RELAPAC1 PE**	S/.	0.10	3.16%	-2.97%	-5.77%	-22.22%	100.00%	355,772	0.79	0.00	-	243.74	Industrial	2.12%
▲ SCCO PE**	US\$	35.53	-1.82%	-2.74%	5.43%	21.93%	89.47%	170,544	1.34	5.75	18.70	27,466.78	Mining	2.14%
- SIDERC1 PE**	S/.	0.68	0.00%	6.25%	23.64%	40.79%	94.74%	2,054	1.44	15.01	7.39	249.63	Industrial	1.43%
▼ TV PE**	US\$	0.15	-1.29%	-1.29%	-10.00%	-48.48%	78.95%	17,966	1.66	0.00	-	124.56	Mining	2.93%
▼ UNACEMC1 PE**	S/.	2.13	-0.93%	1.43%	6.50%	-16.76%	89.47%	119,483	0.59	2.44	11.67	1,157.77	Industrial	3.00%
▼ VOLCABC1 PE**	S/.	0.39	-4.44%	-7.86%	-14.76%	-45.49%	100.00%	631,456	1.53	0.00	-	471.65	Mining	5.90%
- NEXAPEC1 PE**	S/.	3.55	0.00%	-0.84%	8.23%	-3.30%	42.11%	212,263	1.13	0.00	18.64	1,402.46	Mining	1.56%

Quantity of shares: 26
 Source: Bloomberg, Economática
 * Bloomberg Industry Classification System
 ** PER is used in the stock market and original currency of the instrument
 *Legend: Variation 1D: 1 Day; 5D: 5 Days; 1M: 1 Month; YTD: Var.% 12/31/18 to date

Sectorial Indices

	Close	1D*	5D*	30D*	YTD*	Beta
▲ Mining Index	282.64	1.59%	3.28%	2.02%	-0.77%	1.44
▼ Consumer Index	1,096.40	-0.30%	-0.46%	-0.67%	9.03%	0.37
▲ Industrial Index	209.24	1.81%	3.53%	7.12%	-7.78%	0.56
▲ Banking and Financial Index	1,200.26	1.29%	0.00%	4.43%	0.02%	1.21
▲ Construction Index	227.77	0.35%	3.07%	8.55%	-7.37%	0.48
▲ Services Index	625.94	0.09%	0.25%	9.90%	57.43%	0.22
- Juniors Index	17.57	0.00%	10.16%	2.57%	-40.32%	0.33
▲ Electric Index	611.07	0.10%	0.25%	9.89%	57.42%	0.22

*Legend: Variation 1D: 1 Day; 5D: 5 Days; 1M: 1 Month; YTD: Var.% 12/31/18 to date



Capital Market Laboratory Coordinador: Economist Bruno Bellido Anicama
 Collaboration: Juan Carlos Figueroa, Alonso Butter, Jeanpiere León y Manuel Muñoz Najjar
 e-mail: pulsohorsatil@ulima.edu.pe
 facebook: www.facebook.com/pulsohorsatil.ul
 Phone number : 4376767 Annex: 35340

The content of this document is just for informational purposes. The information and opinions expressed should not be consider as recommendations for future decisions. Under any circumstances, the Capital Market Laboratory of University of Lima will be responsible for the use of the statements in this document.

PULSO BURSÁTIL

SOVEREIGN RATING

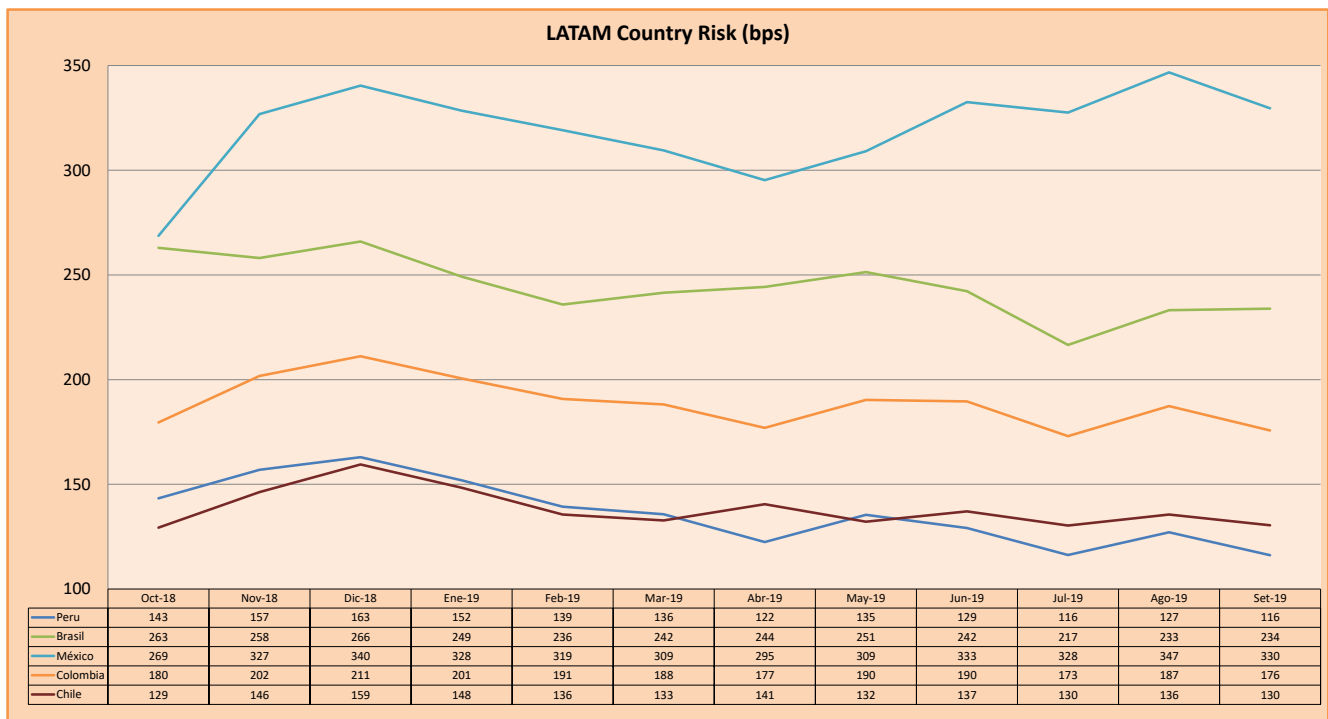
RISK RATINGS

Moody's	S&P	Fitch		
Aaa	AAA	AAA	Prime	
Aa1	AA+	AA+	High credit quality	
Aa2	AA	AA		
Aa3	AA-	AA-		
A1	A+	A+	Medium-high grade, with low credit risk	
A2	A	A		
A3	A-	A-		
Baa1	BBB+	BBB+	Moderate Credit Risk	
Baa2	BBB	BBB		
Baa3	BBB-	BBB-		
Ba1	BB+	BB+	It has speculative elements and it is subject to substantial credit risk	
Ba2	BB	BB		
Ba3	BB-	BB-		
B1	B+	B+	It is considered speculative and it has high credit risk	
B2	B	B		
B3	B-	B-		
Caa1	CCC+	CCC	Bad credit conditions and it is subject to high credit risk	
Caa2	CCC			
Caa3	CCC-			
Ca	C	DDD	Very close to default or in default	
C	D			DD
				D

Source: Bloomberg

Latin America Credit Rating			
Clasificadora de riesgo			
Country	Moody's	Fitch	S&P
Peru	A3	BBB+	BBB+
Mexico	A3	BBB	BBB+
Venezuela	C	WD	SD
Brazil	Ba2	BB-	BB-
Colombia	Baa2	BBB	BBB-
Chile	A1	A	A+
Argentina	Caa2 *	CC	CCC-
Panama	Baa1	BBB	BBB+

Source: Bloomberg



Source: BCRP

Capital Market Laboratory Coordinator: Economist Bruno Bellido Anicama
 Support: Juan Carlos Figueroa, Alonso Butters, Jeanpiere León y Manuel Muñoz Najara
 e-mail: pulsobursatil@ulima.edu.pe
 facebook: www.facebook.com/pulsobursatil.ul
 Phone number : 4376767 Annex: 35340

The content of this document is just for informational purposes. The information and opinions expressed should not be considered as recommendations for future decisions. Under any circumstances, the Capital Market Laboratory of University of Lima will be responsible for the use of the statements in this document.