



PULSO BURSÁTIL

Lima, november 18, 2019

MILA

Main Indexes	Close	1 D	5 D	1 M	YTD	Cap. Burs. (US\$ bill)
▼ IPSA (Chile)	4,814.17	-0.97%	4.21%	-7.28%	-5.70%	130.20
▼ IGPA (Chile)	24,022.50	-0.81%	3.95%	-8.09%	-7.43%	161.08
▲ IGBC (Colombia)	13,290.88	0.78%	-0.23%	3.57%	19.26%	102.55
▲ COLCAP (Colombia)	1,622.74	-0.28%	-0.82%	2.80%	22.39%	100.38
▲ S&P/BVL (Perú)*	19,742.80	0.21%	-0.12%	1.73%	2.03%	91.20
▲ S&P/BVL SEL (Perú)	510.14	0.72%	0.01%	1.33%	-0.43%	71.62
▲ S&P/BVL LIMA 25	24,281.32	0.40%	-0.24%	-1.70%	-8.40%	85.75
▲ IPC (México)	43,392.36	0.47%	-0.71%	0.49%	4.21%	279.89
▲ S&P MILA 40	587.78	6.24%	0.41%	-5.31%	-3.43%	249.49

Equity

Largest gains	Exchange	Amt.	Price	▲%	Largest losses	Exchange	Amt.	Price	▼%
ETB	Colomb.	COP	273.00	9.20	TV	Lima	USD	0.14	-7.74
ANDINA-A	Santia.	CLP	1799.90	5.87	ILC	Santia.	CLP	8000.00	-5.88
MASISA	Santia.	CLP	34.10	4.60	GRAMONC1	Lima	PEN	1.32	-5.04
BANVIDA	Santia.	CLP	250.32	4.57	CHILE	Santia.	CLP	92.86	-3.77

Per Turnover

	Exchange	Amount (US\$)
FALABELLA	Santia.	43,214,333
CHILE	Santia.	19,604,811
BSANTANDER	Santia.	12,170,258
	Santia.	8,068,416
COPEC	Santia.	7,746,627

Per Volume

	Exchange	Volume
BSANTANDER	Santia.	197,407,054
CHILE	Santia.	160,716,666
VAPORES	Santia.	82,808,344
ETB	Colomb.	62,319,319
COLBUN	Santia.	13,369,216

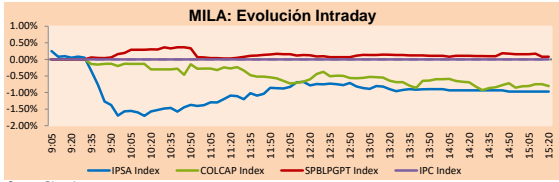
MILA

Peru: The General BVL index ended today's session with a positive result of + 0.21%. The index maintains a positive trend in local currency of + 2.03%, while the adjusted yield in dollars amounts to + 1.91%. Then, the S&P / BVL Peru SEL varied by + 0.72%, while the S&P / BVL LIMA 25 varied by + 0.40%. The PEN spot reached S / 3.3715. Headline: The Peruvian Central Bank said that the collection of income tax grew by 16.3% in October.

Chile: The IPSA index closed the day today with negative yields of -0.97%. The sectors with the worst results were Financial (-2.19%) and Communication Services (-2.14%). On the other hand, the most affected values were Inversiones La Construcción (-5.46%) and Banco de Chile. (-3.77%). Headline: Chilean Government announces financing to SMEs for US \$ 7,400M through Banco Estado and Corfo funds.

Colombia: The Colcap index closed the day today with a negative return of -0.28%. The sectors with the worst results were Industrial (-1.84%) and Finance (-0.78%). On the other hand, the most affected values were CEMEX Latam Holdings SA (-2.05%) and Avianca Holding (-1.84%). Headline: Colombia's public debt reaches 54.3% of GDP, according to the IIF.

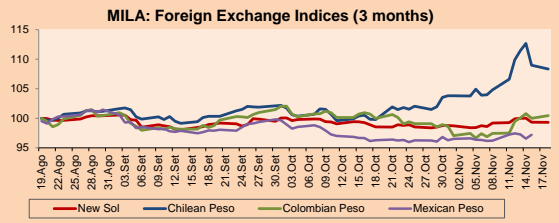
Mexico: The MEXBOL index did not operate today for a holiday related to the Mexican revolution. Headline: Mexico grows 1.8% in informal employment in the third quarter.



Source: Bloomberg

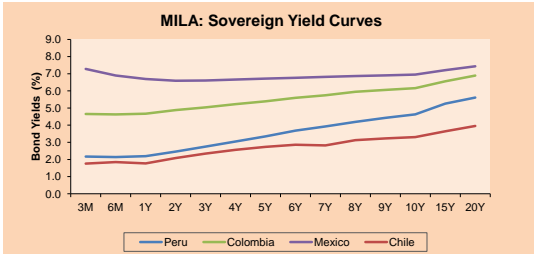
Currency	Price	1D*	5D*	30 D*	YTD*
▲ New Sol (PEN)	3,374.3	0.30%	0.35%	1.08%	0.16%
▲ Chilean Peso (CLP)	772.77	-0.59%	-0.59%	8.56%	11.41%
▲ Colombian Peso (COP)	3,442.27	0.47%	3.03%	0.49%	5.92%
▲ Mexican Peso (MXN)	19.31	0.66%	1.01%	1.08%	-1.75%

*Legend: Variation 1D: 1 day; 5D: 5 days; 1M: 1 Month; YTD: Var%12/31/18 to date

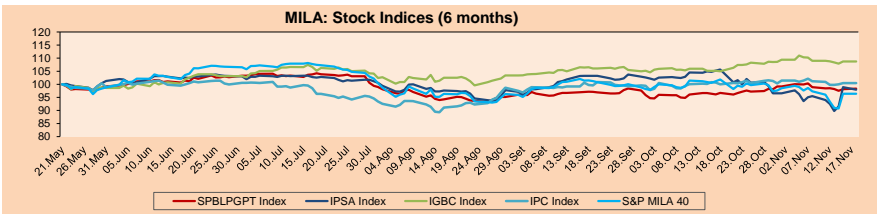


Base: 19/08/19=100
Source: Bloomberg

Fixed Income	Bid Yield (%)	Ask Yield (%)	Duration	
PERU 4.125 08/25/2027	USD 111.482	2.52	2.46	6.67
PERU 7.35 07/21/25	USD 125.992	2.44	2.39	4.72
PERU 8.75 11/21/33	USD 164.229	3.08	3.06	9.28
PERU 6.55 03/14/37	USD 144.595	3.20	3.16	11.17
PERU 5.625 11/18/2050	USD 144.235	3.34	3.31	17.59
CHILE 2.25 10/30/22	USD 100.153	2.26	2.13	2.83
CHILE 3.875 08/05/20	USD 101.275	2.26	1.84	0.70
CHILE 3.625 10/30/2042	USD 107.683	3.17	3.14	16.01
COLOM 11.75 02/25/20	USD 102.705	1.94	0.91	0.27
COLOM 11.85 03/09/28	USD 160.893	3.41	3.34	5.97
COLOM 10.375 01/28/33	USD 160.783	4.36	4.22	8.38
COLOM 7.375 09/18/37	USD 139.596	4.22	4.18	11.15
MEX 4 10/02/23	USD 105.814	2.45	2.38	3.57
MEX5.55 01/45	USD 120.663	4.217	4.204	14.53



Source: Bloomberg

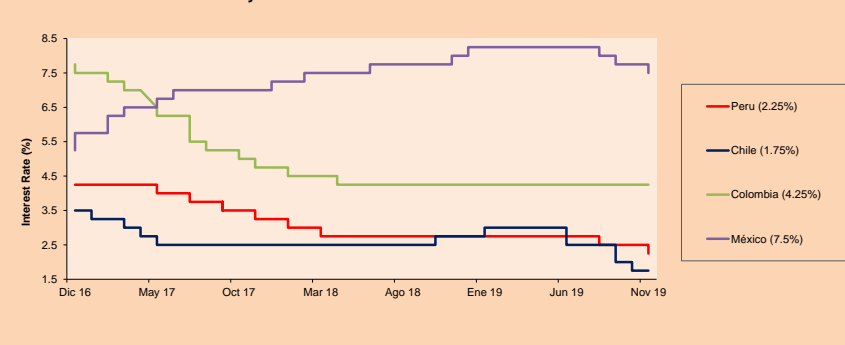


Base: 22/05/19=100
Source: Bloomberg

ETFs

	Curr.	Close	1D	5D	30 D	YTD	Exchange
▲ iShares MSCI All Peru Caped Index Fund	USD	34.86	0.66%	0.37%	0.84%	0.03%	NYSE Arca
iShares MSCI Mexico Capped	USD	33.27	0.00%	1.87%	-15.06%	-18.12%	Cboe BZX
▼ Global X MSCI Colombia	USD	13.0508	-0.79%	-3.15%	1.29%	19.16%	NYSE Arca
▼ iShares MSCI Emerging Markets	USD	44.35	-0.78%	-1.40%	0.05%	9.88%	NYSE Arca
▼ Vanguard FTSE Emerging Markets	USD	43.06	-0.16%	-0.71%	2.57%	11.08%	NYSE Arca
▼ iShares Core MSCI Emerging Markets	USD	42.27	-0.02%	-0.80%	2.10%	13.34%	NYSE Arca
▼ iShares JP Morgan Emerging Markets Bonds	USD	51.78	-0.08%	-0.63%	2.76%	10.92%	NYSE Arca
▼ Morgan Stanley Emerging Markets Domestic	USD	58.41	-0.14%	-0.84%	0.72%	5.69%	Cboe BZX
	USD	6.83	-0.29%	-2.01%	0.44%	20.30%	New York

MILA: Policy Rate



Source: Bloomberg

Capital Market Laboratory Coodinator: Economist Bruno Bellido Anicama
Collaboration: Juan Carlos Figueroa, Alonso Butters, Jeanpiere León y Manuel Muñoz Najar
e-mail: pulsobursatil@ulima.edu.pe
facebook: www.facebook.com/pulsobursatil.ul
Phone number : 4376767 Annex: 35340

PULSO BURSÁTIL

LIMA

Stocks

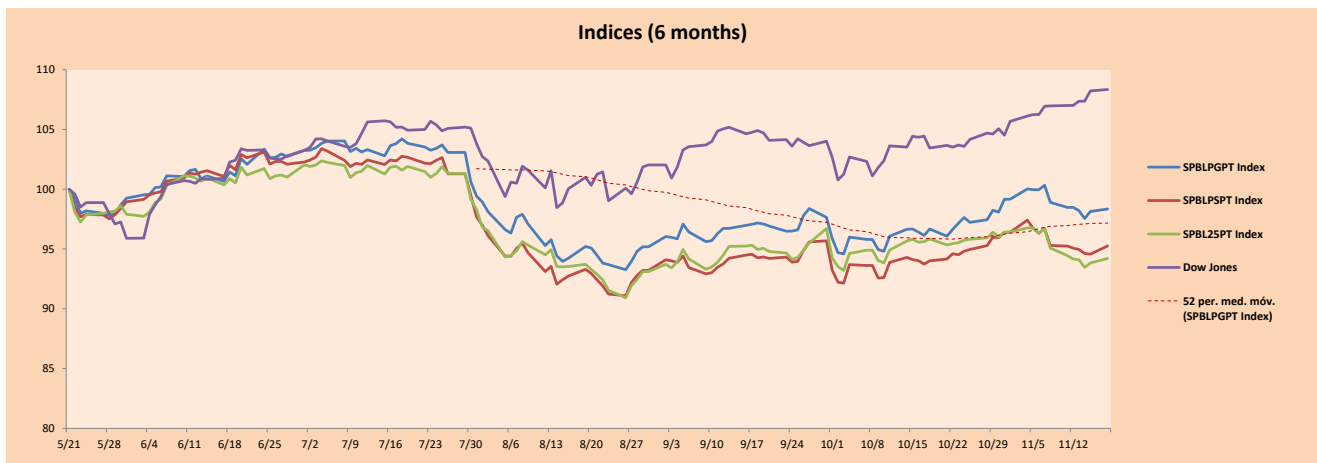
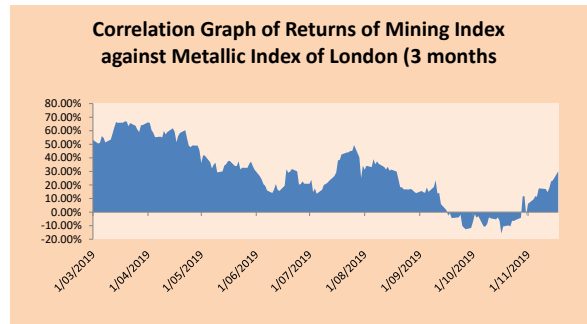
Ticker	Currency	Price	1D*	5D*	30D*	YTD*	Frequency	Volume (US\$)	Beta	Dividend Yield (%)	Price Earning	Market Cap. (M US\$)	Economic Sector*	Index Weight
▼ ALICORC1 PE**	S/.	8.93	-0.78%	-0.78%	-5.10%	-8.25%	100.00%	1,013,161	0.62	2.69	17.17	2,261.63	Industrial	3.53%
▲ ATACOCB1 PE**	S/.	0.15	0.00%	-3.23%	-25.00%	-53.42%	68.42%	4,445	#N/A N/A	0.00	4.04	153.15	Mining	1.02%
▲ BACKJUS1 PE**	S/.	25.35	1.00%	1.93%	6.74%	23.85%	78.95%	26,260	0.35	5.84	8.27	9,924.68	Industrial	0.82%
▲ BAP PE**	US\$	210.00	0.29%	2.31%	1.01%	-1.55%	100.00%	792,984	1.29	4.01	-	16,749.91	Diverse	5.82%
- BVN PE**	US\$	14.77	0.00%	-4.03%	0.68%	-7.92%	84.21%	71,044	1.51	0.00	-	4,071.12	Mining	5.88%
- CASAGRC1 PE**	S/.	2.80	3.59%	-3.70%	-14.19%	-35.71%	94.74%	5,291	0.65	0.49	15.26	64.91	Agricultural	1.31%
- BBVAC1 PE**	S/.	3.44	0.00%	-1.71%	4.24%	-0.86%	94.74%	11,979	0.52	4.01	12.62	5,999.80	Finance	2.85%
- CORAREI1 PE**	S/.	0.84	2.44%	2.44%	5.00%	26.51%	100.00%	158,701	0.90	7.30	4.08	337.53	Industrial	1.72%
▼ CPACASC1 PE**	S/.	6.40	-0.78%	-1.54%	0.00%	-0.78%	94.74%	18,019	0.66	5.89	35.56	809.29	Industrial	2.38%
▼ CVERDEC1 PE**	US\$	17.70	1.14%	-1.67%	1.14%	-13.38%	89.47%	22,965	0.85	2.42	-	6,195.99	Mining	5.25%
- ENGEPEC1 PE**	S/.	2.37	0.00%	-0.71%	-3.89%	28.52%	78.95%	2,964	0.76	3.76	13.26	1,993.85	Public Services	1.44%
- ENDISPC1**	S/.	7.15	0.00%	0.28%	-0.68%	39.73%	73.68%	862	0.63	0.00	11.20	1,353.09	Public Services	0.98%
▲ FERREYC1 PE**	S/.	2.22	3.74%	5.71%	6.73%	-5.77%	100.00%	70,208	0.92	7.92	8.34	641.92	Diverse	4.90%
▼ GRAMONC1 PE**	S/.	1.32	-5.04%	-4.35%	-16.46%	-33.67%	94.74%	29,873	0.84	0.00	-	341.09	Diverse	4.05%
▲ IFS PE**	US\$	39.95	0.55%	-1.96%	-1.11%	-1.22%	100.00%	137,899	0.98	4.38	11.47	4,612.14	Diverse	7.22%
▲ INRETC1 PE**	US\$	34.01	1.83%	2.44%	-5.58%	21.25%	100.00%	358,593	0.70	1.00	27.93	3,496.48	Diverse	5.28%
▲ LUSURC1 PE**	S/.	23.50	2.17%	4.44%	6.77%	124.60%	100.00%	1,561,797	0.63	3.57	18.81	3,391.33	Public Services	1.81%
- MINSUR1 PE**	S/.	1.48	0.00%	0.00%	2.78%	12.12%	78.95%	3,388	1.32	0.00	6.42	1,264.51	Mining	3.09%
- PML PE**	US\$	0.08	0.00%	1.27%	-9.09%	-54.29%	31.58%	8,280	1.33	0.00	-	21.11	Mining	2.12%
▲ RELAPAC1 PE**	S/.	0.10	2.06%	3.13%	-10.00%	-21.43%	100.00%	4,851	0.85	0.00	-	244.08	Industrial	2.12%
▼ SCCO PE**	US\$	37.20	-1.77%	-2.11%	10.32%	29.02%	94.74%	2,046	1.30	5.50	19.58	28,757.79	Mining	2.14%
▲ SIDERC1 PE**	S/.	0.66	1.54%	-1.49%	-2.94%	36.65%	94.74%	11,676	1.42	15.47	7.50	240.18	Industrial	1.43%
▼ TV PE**	US\$	0.14	-7.74%	-10.63%	-6.54%	-51.85%	78.95%	33,199	1.69	0.00	-	116.42	Mining	2.93%
- UNACEMC1 PE**	S/.	2.02	0.00%	-0.83%	-7.59%	-20.57%	89.47%	4,490	0.62	0.00	11.06	1,088.41	Industrial	3.00%
▲ VOLCABC1 PE**	S/.	0.37	0.81%	-5.10%	-13.69%	-47.61%	100.00%	92,887	1.47	0.00	-	1,958.77	Mining	5.90%
- NEXAPEC1 PE**	S/.	3.40	0.00%	0.00%	0.00%	-7.38%	52.63%	6,046	1.09	0.00	32.57	1,330.62	Mining	1.56%

Quantity of shares: 26
Source: Bloomberg, Económica
* Bloomberg Industry Classification System
** PER is used in the stock market and original currency of the instrument
*Legend: Variation 1D: 1 Day; 5D: 5 Days; 1M: 1 Month; YTD: Var.% 12/31/18 to date

Sectorial Indices

	Close	1D*	5D*	30D*	YTD*	Beta
▼ Mining Index	284.48	-0.47%	-2.70%	4.76%	-0.12%	1.42
▲ Consumer Index	1,084.05	0.74%	1.10%	-3.26%	7.80%	0.38
▲ Industrial Index	200.24	0.46%	0.72%	-2.27%	-11.75%	0.61
▲ Banking and Financial Index	1,184.59	0.58%	2.18%	1.93%	-1.28%	1.22
▼ Construction Index	211.37	-1.05%	-1.51%	-5.90%	-14.04%	0.46
▲ Services Index	629.41	0.71%	2.14%	2.51%	58.30%	0.20
▲ Juniors Index	16.97	0.30%	0.83%	5.27%	-42.36%	0.27
▲ Electric Index	614.46	0.71%	2.14%	2.51%	58.30%	0.20

*Legend: Variation 1D: 1 Day; 5D: 5 Days; 1M: 1 Month; YTD: Var.% 12/31/18 to date



Source: Bloomberg

Capital Market Laboratory Coordinador: Economist Bruno Bellido Anicama
Collaboration: Juan Carlos Figueroa, Alonso Butter, Jeanpiere León y Manuel Muñoz Najjar
e-mail: pulsobursatil@ulima.edu.pe
facebook: www.facebook.com/pulsobursatil.ul
Phone number : 4376767 Annex: 35340

The content of this document is just for informational purposes. The information and opinions expressed should not be consider as recommendations for future decisions. Under any circumstances, the Capital Market Laboratory of University of Lima will be responsible for the use of the statements in this document.

PULSO BURSÁTIL

SOVEREIGN RATING

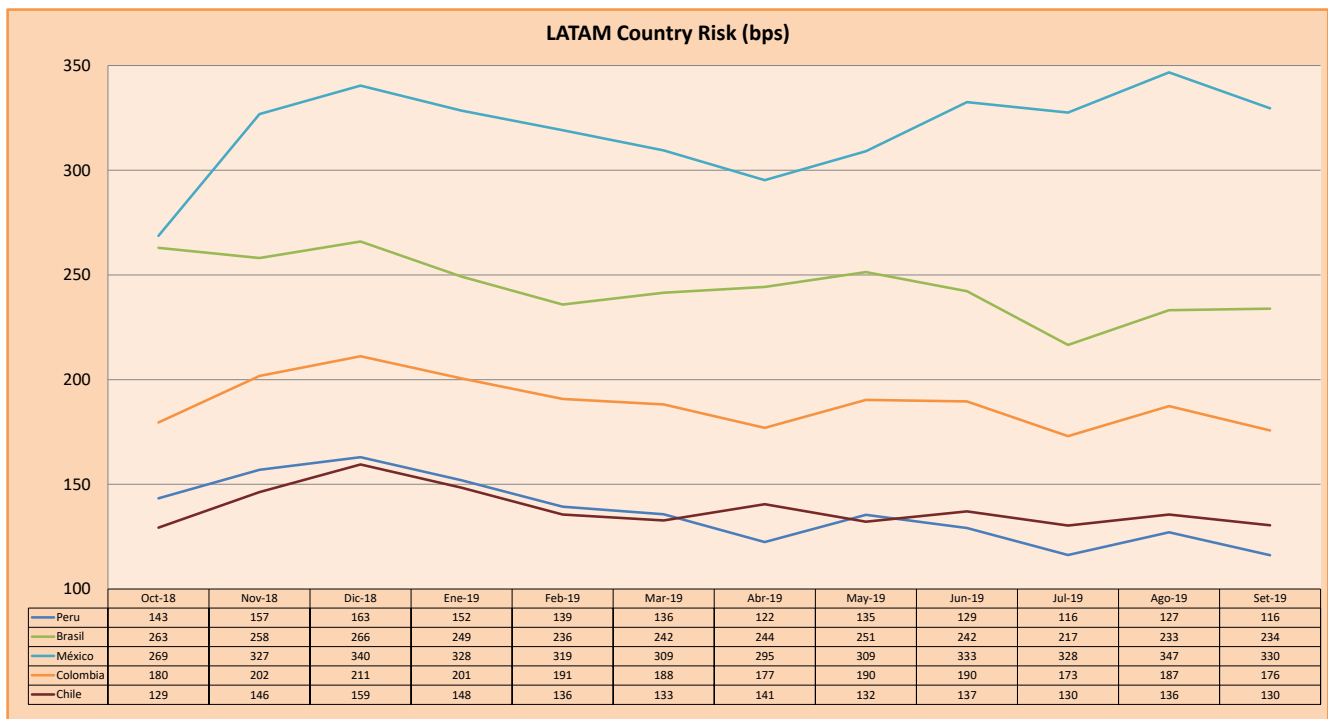
RISK RATINGS

Moody's	S&P	Fitch		
Aaa	AAA	AAA	Prime	
Aa1	AA+	AA+	High credit quality	
Aa2	AA	AA		
Aa3	AA-	AA-		
A1	A+	A+	Medium-high grade, with low credit risk	
A2	A	A		
A3	A-	A-		
Baa1	BBB+	BBB+	Moderate Credit Risk	
Baa2	BBB	BBB		
Baa3	BBB-	BBB-		
Ba1	BB+	BB+	It has speculative elements and it is subject to substantial credit risk	
Ba2	BB	BB		
Ba3	BB-	BB-		
B1	B+	B+	It is considered speculative and it has high credit risk	
B2	B	B		
B3	B-	B-		
Caa1	CCC+	CCC	Bad credit conditions and it is subject to high credit risk	
Caa2	CCC			
Caa3	CCC-			
Ca	C	DDD	Very close to default or in default	
C	D			DD
				D

Source: Bloomberg

Latin America Credit Rating			
Clasificadora de riesgo			
Country	Moody's	Fitch	S&P
Peru	A3	BBB+	BBB+
Mexico	A3	BBB	BBB+
Venezuela	C	WD	SD
Brazil	Ba2	BB-	BB-
Colombia	Baa2	BBB	BBB-
Chile	A1	A	A+
Argentina	Caa2 *	CC	CCC-
Panama	Baa1	BBB	BBB+

Source: Bloomberg



Source: BCRP

Capital Market Laboratory Coordinator: Economist Bruno Bellido Anicama
 Support: Juan Carlos Figueroa, Alonso Butters, Jeanpiere León y Manuel Muñoz Najara
 e-mail: pulsobursatil@ulima.edu.pe
 facebook: www.facebook.com/pulsobursatil.ul
 Phone number : 4376767 Annex: 35340

The content of this document is just for informational purposes. The information and opinions expressed should not be considered as recommendations for future decisions. Under any circumstances, the Capital Market Laboratory of University of Lima will be responsible for the use of the statements in this document.