



# PULSO BURSÁTIL

Lima, november 22, 2019

## MILA

Main Indexes	Close	1 D	5 D	1 M	YTD	Cap. Burs. (US\$ bill)
▼ IPSA (Chile)	4,729.90	-0.30%	-2.71%	-5.27%	-7.36%	122.57
▼ IGPA (Chile)	23,605.28	-0.30%	-2.53%	-6.16%	-9.03%	151.94
▲ IGBC (Colombia)	13,290.88	0.78%	0.00%	1.23%	19.26%	101.72
▲ COLCAP (Colombia)	1,613.84	0.88%	-0.82%	0.03%	21.71%	99.57
▲ S&P/BVL (Perú)*	19,885.65	0.67%	0.94%	2.49%	2.77%	90.54
▲ S&P/BVL SEL (Perú)	512.67	0.50%	1.22%	1.19%	0.06%	71.09
▼ S&P/BVL LIMA 25	24,232.65	-0.05%	0.20%	-1.50%	-8.58%	85.03
▲ IPC (México)	43,521.86	0.62%	0.77%	0.37%	4.52%	277.02
▼ S&P MILA 40	568.55	-0.45%	-3.27%	-6.24%	-6.59%	241.08

### Equity

Largest gains	Exchange	Amt.	Price	▲%	Largest losses	Exchange	Amt.	Price	▼%
BVC	Colomb.	COP	11400.00	6.54	TV	Lima	USD	0.13	-4.44
ISA	Colomb.	COP	18680.00	4.36	PARAUICO	Santia.	CLP	1804.00	-3.20
ORO BLANCO	Santia.	CLP	2.30	4.03	HITES	Santia.	CLP	218.96	-3.20
BACKUSI1	Lima	PEN	26.50	3.52	ANTARCHILE	Santia.	CLP	7000.00	-3.05

### Per Turnover

	Exchange	Amount (US\$)
CHILE	Santia.	14,553,749
FALABELLA	Santia.	14,135,083
SQM-B	Santia.	8,790,776
	Santia.	6,210,989
CCU	Santia.	5,745,298

### Per Volume

	Exchange	Volume
VAPORES	Santia.	171,915,347
CHILE	Santia.	132,535,840
BSANTANDER	Santia.	107,631,645
COLBUN	Santia.	12,810,356
ORO BLANCO	Santia.	8,578,802

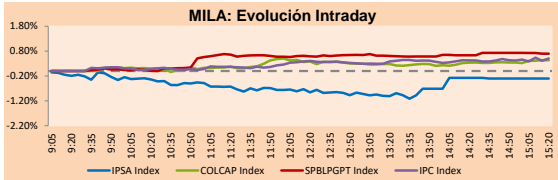
### MILA

Peru: The General BVL index ended today's session with a positive result of + 0.67%. The index maintains a positive trend in local currency of + 2.77%, while the adjusted yield in dollars amounts to + 2.43%. Then, the S&P / BVL Peru SEL varied by + 0.50%, while the S&P / BVL LIMA 25 varied by -0.05%. The PEN spot reached 5 / 3.3880. Owner: Energy production grew 4.1% between January and October of this year.

Chile: The IPSA index closed the day today with negative yields of -0.30%. The sectors with the worst results were Energy (-2.84%) and Real Estate (-2.06%). On the other hand, the most affected values were Parque Arauco SA (-3.20%) and Empresas COPEC SA (-2.82%). Headline: Banchile strongly cuts growth projections and sees unemployment of 10%.

Colombia: The Colcap index closed the day today with a positive yield of + 0.88%. The sectors with the best results were Industrial (+ 2.31%) and Public Services (+ 2.01%). On the other hand, the most affected values were Interconexión Eléctrica SA ESP (+ 4.36%) and Inversiones Argos SA (+ 2.92%). Owner: Exports in free zones plummeted 10%.

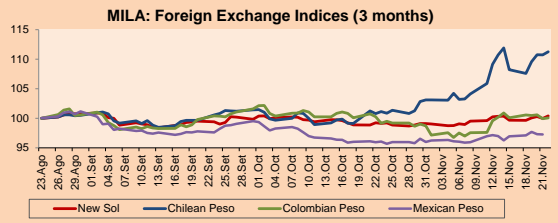
Mexico: The MEXBOL index closed today with a positive yield of + 0.62%. The sectors with the best results were Industrial (+ 0.82%) and Products of first necessity (+ 0.78%). On the other hand, the most affected values were Grupo Financiero Inbursa SA (+ 3.59%) and Promotora y Operadora de Infra (+ 2.62%). Owner: Petróleos Mexicanos (Pemex) will increase production of the Ek Balam contract by 36% in 2020.



Source: Bloomberg

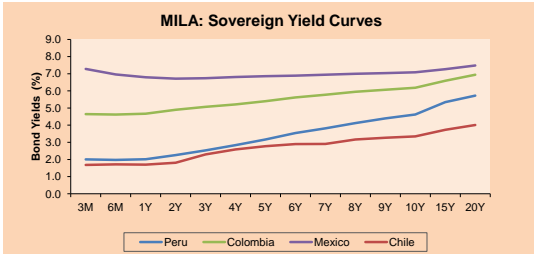
Currency	Price	1D*	5D*	30 D*	YTD*
▲ New Sol (PEN)	3,3889	0.44%	0.73%	1.29%	0.59%
▲ Chilean Peso (CLP)	798.99	0.46%	2.79%	10.02%	15.19%
▲ Colombian Peso (COP)	3,425.00	0.13%	-0.04%	0.92%	5.39%
▼ Mexican Peso (MXN)	19.38	-0.04%	1.03%	1.36%	-1.40%

\*Legend: Variation 1D: 1 day, 5D: 5 days, 1M: 1 Month, YTD: Var%12/31/18 to date

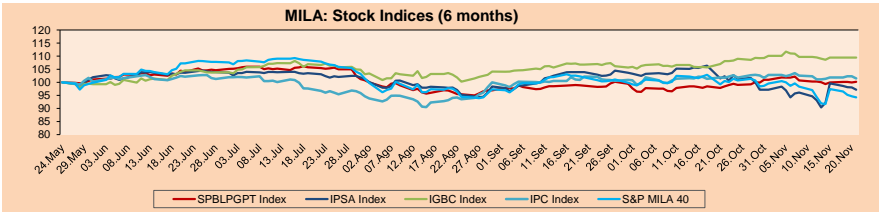


Base: 23/08/19=100  
Source: Bloomberg

Fixed Income	Bid Yield (%)	Ask Yield (%)	Duration	
PERU 4.125 08/25/2027	USD 111.923	2.45	2.41	6.65
PERU 7.35 07/21/25	USD 126.373	2.37	2.31	4.70
PERU 8.75 11/21/33	USD 164.589	3.06	3.03	9.52
PERU 6.55 03/14/37	USD 145.41	3.14	3.12	11.17
PERU 5.625 11/18/2050	USD 145.268	3.29	3.28	17.60
CHILE 2.25 10/30/22	USD 100.186	2.25	2.12	2.82
CHILE 3.875 08/05/20	USD 101.289	2.21	1.76	0.68
CHILE 3.625 10/30/2042	USD 108.121	3.14	3.11	15.99
COLOM 11.75 02/25/20	USD 102.708	1.23	0.27	0.25
COLOM 11.85 03/03/28	USD 161.233	3.36	3.30	6.95
COLOM 10.375 01/28/33	USD 159.401	4.44	4.33	8.37
COLOM 7.375 09/18/37	USD 141.195	4.11	4.08	11.15
MEX 4 10/02/23	USD 105.958	2.41	2.34	3.56
MEX5.55 01/45	USD 121.372	4.17	4.169	14.53



Source: Bloomberg

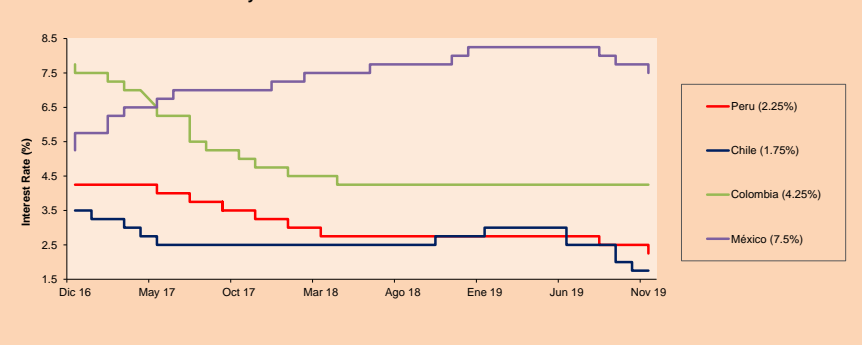


Base: 27/05/19=100  
Source: Bloomberg

### ETFs

ETFs	Curr.	Close	1D	5D	30 D	YTD	Exchange
▼ iShares MSCI All Peru Caped Index Fund	USD	34.47	-0.29%	-0.46%	-1.01%	-1.09%	NYSE Arca
▲ iShares MSCI Mexico Capped	USD	31.8	-1.24%	-4.42%	-12.72%	-21.74%	Cboe BZX
▲ Global X MSCI Colombia	USD	13.01	0.97%	-1.10%	-1.10%	18.79%	NYSE Arca
▲ iShares MSCI Emerging Markets	USD	44.47	0.75%	-0.51%	-0.69%	10.18%	NYSE Arca
▼ Vanguard FTSE Emerging Markets	USD	42.87	0.00%	-0.60%	1.11%	10.59%	NYSE Arca
▲ iShares Core MSCI Emerging Markets	USD	42.23	-0.19%	-0.12%	1.30%	13.23%	NYSE Arca
▲ iShares JP Morgan Emerging Markets Bonds	USD	51.53	0.02%	-0.56%	1.10%	10.38%	NYSE Arca
▲ Morgan Stanley Emerging Markets Domestic	USD	57.88	-0.31%	-1.04%	-0.69%	4.73%	Cboe BZX
		6.89	1.32%	0.58%	0.15%	21.35%	New York

### MILA: Policy Rate



Source: Bloomberg

Capital Market Laboratory Coodinator: Economist Bruno Bellido Anicam  
Collaboration: Juan Carlos Figueroa, Alonso Butters, Jeanpiere León y Manuel Muñoz Najar  
e-mail: pulsobursatil@ulima.edu.pe  
facebook: www.facebook.com/pulsobursatil.ul  
Phone number : 4376767 Annex: 35340



# PULSO BURSÁTIL

## LIMA

### Stocks

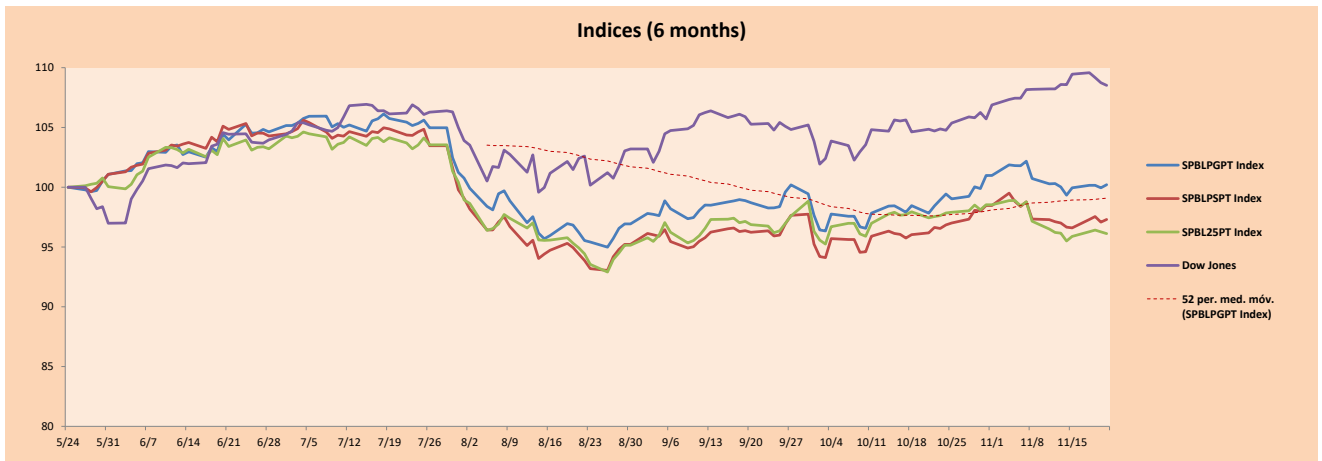
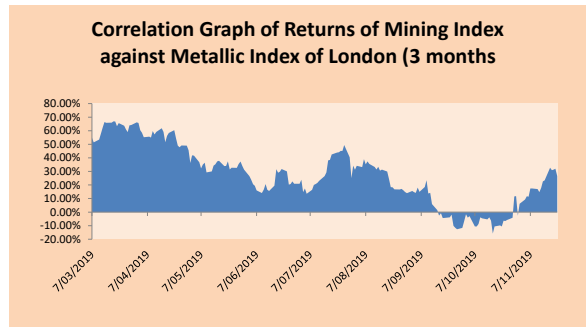
Ticker	Currency	Price	1D*	5D*	30D*	YTD*	Frequency	Volume (US\$)	Beta	Dividend Yield (%)	Price Earning	Market Cap. (M US\$)	Economic Sector*	Index Weight	
-	ALICORC1 PE**	S/.	8.90	0.00%	-1.11%	-3.58%	-8.56%	100.00%	102,898	0.61	2.70	17.11	2,244.32	Industrial	3.53%
-	ATACOCB1 PE**	S/.	0.15	0.00%	0.00%	-21.05%	-53.42%	60.00%	21	#N/A N/A	0.00	4.03	152.49	Mining	1.02%
▲	BACKUSI1 PE**	S/.	26.50	3.52%	5.58%	10.42%	35.74%	70.00%	12,402	0.35	5.59	7.81	10,075.18	Industrial	0.82%
▼	BAP PE**	US\$	206.80	-0.62%	-1.24%	-2.45%	-3.05%	100.00%	88,491	1.31	4.07	-	16,494.67	Diverse	5.82%
-	BVN PE**	US\$	15.00	1.19%	1.74%	8.11%	-6.32%	85.00%	201,475	1.51	0.56	-	4,134.52	Mining	5.88%
-	CASAGRC1 PE**	S/.	2.80	0.00%	3.59%	-12.16%	-35.71%	95.00%	1,611	0.66	0.49	15.26	64.63	Agricultural	1.31%
▼	BBVAC1 PE**	S/.	3.36	-1.18%	-2.33%	0.60%	-3.17%	95.00%	8,475	0.50	4.11	12.33	5,835.02	Finance	2.85%
▼	CORAREI1 PE**	S/.	0.83	-1.19%	4.40%	11.11%	28.88%	100.00%	8,438	0.90	7.92	4.03	327.14	Industrial	1.72%
-	CPACASC1 PE**	S/.	6.60	0.00%	2.33%	2.33%	2.33%	95.00%	12,342	0.64	5.71	36.67	830.81	Industrial	2.38%
▲	CVERDEC1 PE**	US\$	18.00	2.86%	2.86%	0.28%	-11.91%	90.00%	5,400	0.84	2.38	-	6,301.01	Mining	5.25%
-	ENGEPEC1 PE**	S/.	2.35	0.00%	-0.84%	-3.96%	27.44%	75.00%	4,007	0.76	0.00	13.14	1,968.50	Public Services	1.44%
-	ENDISPC1**	S/.	7.15	0.00%	0.00%	-0.40%	39.73%	70.00%	10,579	0.63	0.00	11.20	1,347.26	Public Services	0.98%
▲	FERREYC1 PE**	S/.	2.18	1.40%	4.36%	7.34%	-5.26%	100.00%	330,009	0.95	4.70	8.19	627.63	Diverse	4.90%
▼	GRAMONC1 PE**	S/.	1.29	-3.01%	-7.19%	-19.88%	-35.18%	95.00%	60,061	0.82	0.00	-	331.90	Diverse	4.05%
▼	IFS PE**	US\$	39.30	-0.76%	-1.08%	-2.83%	-	100.00%	454,458	1.00	4.45	11.32	4,537.09	Diverse	7.22%
-	INRETC1 PE**	US\$	35.49	-1.42%	6.26%	0.97%	26.52%	100.00%	1,025,595	0.69	0.96	29.24	3,648.63	Diverse	5.28%
-	LUSURC1 PE**	S/.	24.00	0.00%	4.35%	4.30%	129.38%	100.00%	154,422	0.63	3.50	19.21	3,448.56	Public Services	1.81%
▼	MINSUR11 PE**	S/.	1.48	-1.33%	0.00%	2.78%	12.12%	80.00%	4,367	1.32	5.12	6.40	1,259.06	Mining	3.09%
-	PML PE**	US\$	0.08	0.00%	0.00%	-5.88%	-54.29%	40.00%	2,800	1.33	0.00	-	21.11	Mining	2.12%
▼	RELAPAC1 PE**	S/.	0.10	-2.00%	1.03%	-4.85%	-22.22%	100.00%	5,806	0.82	0.00	-	240.57	Industrial	2.12%
▲	SCCO PE**	US\$	38.00	2.70%	0.34%	6.59%	31.79%	90.00%	30,764	1.29	5.38	20.00	29,376.24	Mining	2.14%
▲	SIDERC1 PE**	S/.	0.66	1.54%	1.54%	4.76%	36.65%	95.00%	20,585	1.42	15.47	7.50	239.14	Industrial	1.43%
▼	TV PE**	US\$	0.13	-4.44%	-16.77%	-14.00%	-56.57%	90.00%	37,442	1.69	0.00	-	105.02	Mining	2.93%
▲	UNACEMC1 PE**	S/.	2.00	0.50%	-0.99%	-5.93%	-21.35%	90.00%	277,249	0.61	2.60	10.95	1,072.99	Industrial	3.00%
▲	VOLCABC1 PE**	S/.	0.35	0.86%	-4.34%	-16.94%	-50.28%	100.00%	72,290	1.44	0.00	-	1,936.63	Mining	5.90%
-	NEXAPEC1 PE**	S/.	3.26	0.00%	-4.12%	-6.86%	-11.20%	55.00%	9,620	1.09	0.00	31.13	1,272.04	Mining	1.56%

Quantity of shares: 26  
 Source: Bloomberg, Economatica  
 \* Bloomberg Industry Classification System  
 \*\* PER is used in the stock market and original currency of the instrument  
 \*Legend: Variation 1D: 1 Day; 5D: 5 Days; 1M: 1 Month; YTD: Var.% 12/31/18 to date

### Sectorial Indices

	Close	1D*	5D*	30D*	YTD*	Beta	
▲	Mining Index	289.29	2.05%	1.21%	6.31%	1.57%	1.39
▲	Consumer Index	1,112.20	0.09%	3.36%	0.85%	10.60%	0.38
▲	Industrial Index	200.78	-0.01%	0.73%	-1.62%	-11.51%	0.61
▼	Banking and Financial Index	1,171.44	-0.27%	-0.54%	-1.23%	-2.38%	1.25
▼	Construction Index	211.71	-0.62%	-0.89%	-5.31%	-13.90%	0.46
▲	Services Index	636.75	0.20%	1.89%	2.44%	60.14%	0.19
▲	Juniors Index	16.14	0.37%	-4.61%	4.87%	-45.18%	0.18
▲	Electric Index	621.63	0.21%	1.89%	2.44%	60.14%	0.19

\*Legend: Variation 1D: 1 Day; 5D: 5 Days; 1M: 1 Month; YTD: Var.% 12/31/18 to date



Capital Market Laboratory Coordinador: Economist Bruno Bellido Anicama  
 Collaboration: Juan Carlos Figueroa, Alonso Butter, Jeanpiere León y Manuel Muñoz Najjar  
 e-mail: pulsobursatil@ulima.edu.pe  
 facebook: www.facebook.com/pulsobursatil.ul  
 Phone number : 4376767 Annex: 35340

The content of this document is just for informational purposes. The information and opinions expressed should not be considered as recommendations for future decisions. Under any circumstances, the Capital Market Laboratory of University of Lima will be responsible for the use of the statements in this document.

# PULSO BURSÁTIL

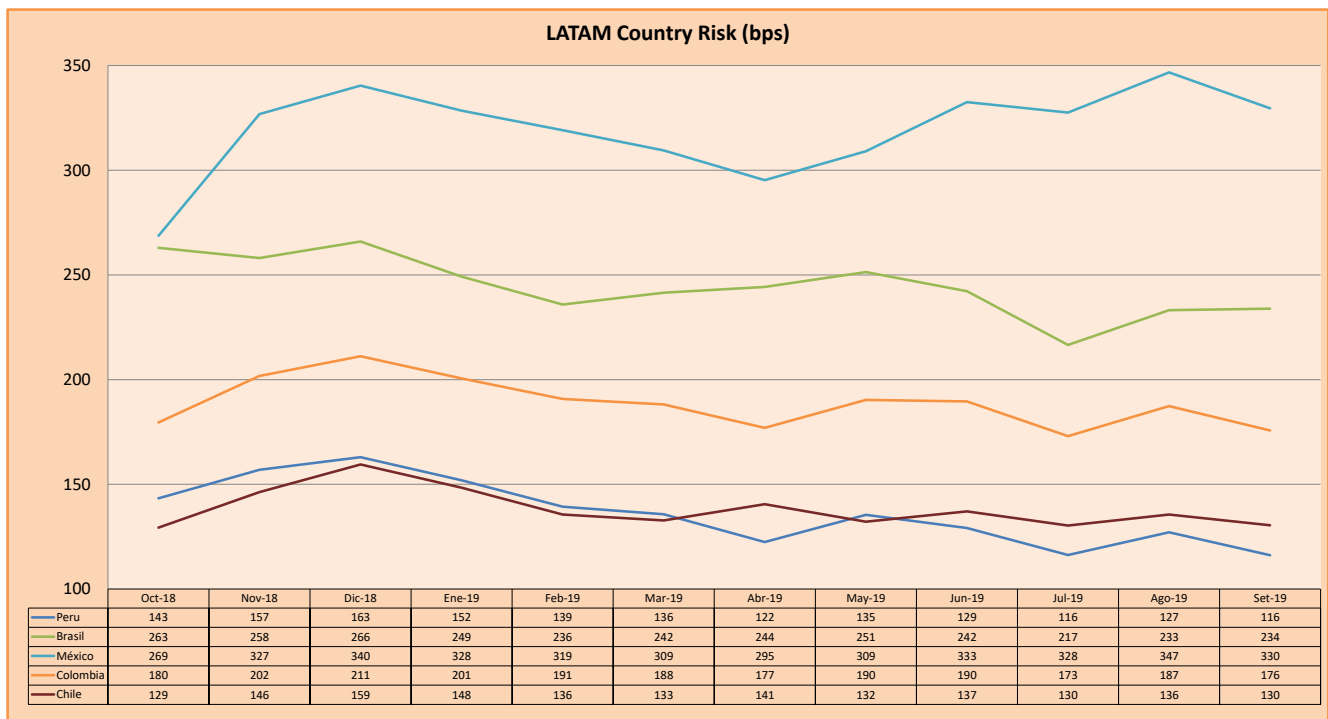
## SOVEREIGN RATING

RISK RATINGS				
Moody's	S&P	Fitch		
Aaa	AAA	AAA	Prime	
Aa1	AA+	AA+	High credit quality	
Aa2	AA	AA		
Aa3	AA-	AA-		
A1	A+	A+	Medium-high grade, with low credit risk	
A2	A	A		
A3	A-	A-		
Baa1	BBB+	BBB+	Moderate Credit Risk	
Baa2	BBB	BBB		
Baa3	BBB-	BBB-		
Ba1	BB+	BB+	It has speculative elements and it is subject to substantial credit risk	
Ba2	BB	BB		
Ba3	BB-	BB-		
B1	B+	B+	It is considered speculative and it has high credit risk	
B2	B	B		
B3	B-	B-		
Caa1	CCC+	CCC	Bad credit conditions and it is subject to high credit risk	
Caa2	CCC			
Caa3	CCC-			
Ca	C	DDD	Very close to default or in default	
C	D			DD
				D

Source: Bloomberg

Latin America Credit Rating			
Clasificadora de riesgo			
Country	Moody's	Fitch	S&P
Peru	A3	BBB+	BBB+
Mexico	A3	BBB	BBB+
Venezuela	C	WD	SD
Brazil	Ba2	BB-	BB-
Colombia	Baa2	BBB	BBB-
Chile	A1	A	A+
Argentina	Caa2 *	CC	CCC-
Panama	Baa1	BBB	BBB+

Source: Bloomberg



Source: BCRP

Capital Market Laboratory Coordinator: Economist Bruno Bellido Anicama  
 Support: Juan Carlos Figueroa, Alonso Butters, Jeanpiere León y Manuel Muñoz Najara  
 e-mail: pulsobursatil@ulima.edu.pe  
 facebook: www.facebook.com/pulsobursatil.ul  
 Phone number : 4376767 Annex: 35340

The content of this document is just for informational purposes. The information and opinions expressed should not be considered as recommendations for future decisions. Under any circumstances, the Capital Market Laboratory of University of Lima will be responsible for the use of the statements in this document.