



PULSO BURSÁTIL

Lima, december 6, 2019

MILA

Main Indexes	Close	1 D	5 D	1 M	YTD	Cap. Burs. (US\$ bill)
▼ IPSA (Chile)	4,723.80	-0.24%	4.08%	2.71%	-7.48%	125.10
▼ IGPA (Chile)	23,560.12	-0.17%	3.76%	2.07%	-9.21%	155.37
▲ IGBC (Colombia)	13,290.88	0.78%	0.00%	-1.43%	19.26%	103.06
▲ COLCAP (Colombia)	1,611.67	-0.19%	-0.02%	-2.74%	21.55%	101.64
▲ S&P/BVL (Perú)*	19,874.37	0.53%	-1.01%	-0.95%	2.71%	91.58
▲ S&P/BVL SEL (Perú)	511.16	-0.12%	-1.15%	-0.90%	-0.23%	72.24
▲ S&P/BVL LIMA 25	24,068.32	0.67%	-0.92%	-3.06%	-9.20%	85.74
▼ IPC (México)	41,938.69	-0.66%	-2.06%	-4.29%	0.72%	272.53
▲ S&P MILA 40	573.31	1.33%	3.83%	-3.67%	-5.80%	242.07

Equity

Largest gains	Exchange	Amt.	Price	▲%	Largest losses	Exchange	Amt.	Price	▼%
DIA	Lima	USD	280.35	4.63	BROCALI1	Lima	PEN	1.82	-8.08
GRAMONC1	Lima	PEN	1.48	4.23	FALABELLA	Santia.	CLP	3235.00	-4.57
ATACOB1	Lima	PEN	0.13	4.17	CHILE	Santia.	CLP	84.55	-2.82
ESPANOLA	Santia.	CLP	2400.00	3.90	EXITO	Colomb.	COP	13200.00	-2.80

Per Turnover

	Exchange	Amount (US\$)
SK	Santia.	19,333,308
PFAVAL	Colomb.	15,127,049
LUSURC1	Lima	14,391,049
	Santia.	11,519,678
BSANTANDER	Santia.	8,740,931

Per Volume

	Exchange	Volume
BSANTANDER	Santia.	153,120,565
CHILE	Santia.	78,875,610
PFAVAL	Colomb.	36,620,308
VAPORES	Santia.	28,228,275
GRAMONC1	Lima	19,709,227

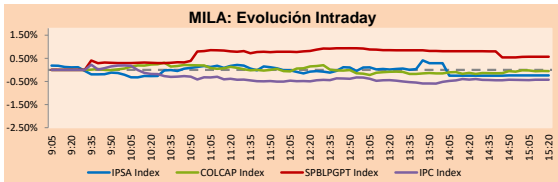
MILA

Peru: The General BVL index ended today's session with a positive result of +0.53%. The index maintains a positive trend in local currency of + 2.71%, while the adjusted yield in dollars amounts to + 2.39%. Then, the S&P / BVL Peru SEL varied by -0.12%, while the S & P / BVL LIMA 25 varied by + 0.67%. The PEN spot reached S / 3.3770. Headline: Trade balance recorded a surplus of US \$ 403 million in October.

Chile: The IPSA index closed today with a negative yield of -0.24%. The sectors with the worst results were Non-basic Consumer Products (-3.85%) and Finance (-2.07%). On the other hand, the most affected values were SACI Falabella (-4.57%) and Banco de Chile (-2.82%). Headline: Government detects almost 15,000 companies affected after the start of the social outbreak.

Colombia: The COLCAP index closed today with a negative performance of -0.19%. The sectors with the worst results were Materials (-0.96%) and essential products (-0.82%). On the other hand, the most affected values were Almacenes Exitó SA (-2.8%) and Inversiones Argos SA (-1.8%). Headline: EPM expects US \$ 150M from Mapfre in 2020 for damage to Hidroituango.

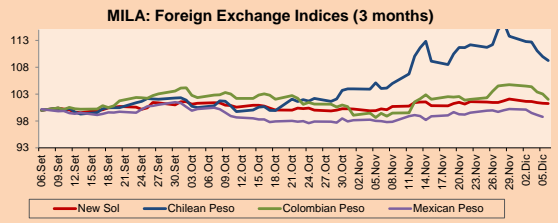
Mexico: The MEXBOL index closed the day today with a negative return of -0.66%. The sectors with the worst results were Health (-1.98%) and Materials (-1.78%). On the other hand, the most affected values were Industrias Peñoles SAB de CV (-3.06%) and Cemex SAB de CV (-2.73%). Headline: Year-on-year inflation in Mexico would have moderated slightly until November.



Source: Bloomberg

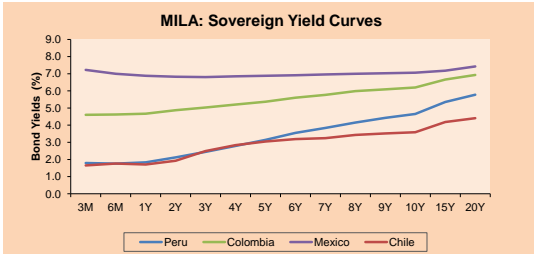
Currency	Price	1D*	5D*	30 D*	YTD*
▼ New Sol (PEN)	3,377.4	-0.06%	-0.80%	1.12%	0.25%
▼ Chilean Peso (CLP)	778.23	-0.64%	-3.98%	5.01%	12.20%
▼ Colombian Peso (COP)	3,425.13	-0.96%	-2.61%	2.61%	5.40%
▼ Mexican Peso (MXN)	19.31	-0.29%	-1.15%	0.84%	-1.75%

*Legend: Variation 1D: 1 day; 5D: 5 days; 1M: 1 Month; YTD: Var%12/31/18 to date

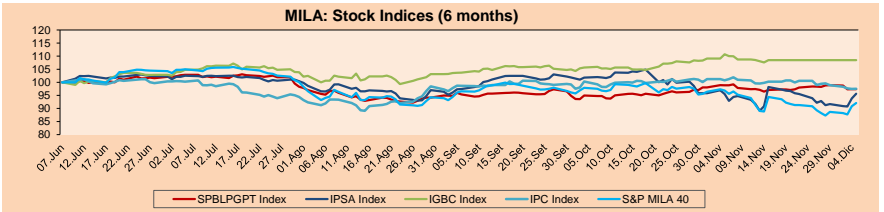


Base: 06/09/19=100
Source: Bloomberg

Fixed Income	Bid Yield (%)	Ask Yield (%)	Duration
PERU 4.125 08/25/2027	USD 111.967	2.44 2.39	6.62
PERU 7.35 07/21/25	USD 126.242	2.37 2.30	4.66
PERU 8.75 11/21/33	USD 164.396	3.07 3.03	9.48
PERU 6.55 03/14/37	USD 145.018	3.16 3.13	11.13
PERU 5.625 11/18/2050	USD 144.813	3.31 3.29	17.54
CHILE 2.25 10/30/22	USD 100.134	2.27 2.13	2.78
CHILE 3.875 08/05/20	USD 101.291	2.14 1.61	0.64
CHILE 3.625 10/30/2042	USD 107.749	3.16 3.13	15.93
COLOM 11.75 02/25/20	USD 102.383	0.90 -0.31	0.21
COLOM 11.85 03/09/28	USD 160.25	3.44 3.37	5.90
COLOM 10.375 01/28/33	USD 160.892	4.34 4.20	8.34
COLOM 7.375 09/18/37	USD 141.114	4.11 4.08	11.12
MEX 4 10/02/23	USD 105.81	2.44 2.35	3.52
MEX5.55 01/45	USD 121.644	4.164 4.143	14.5



Source: Bloomberg

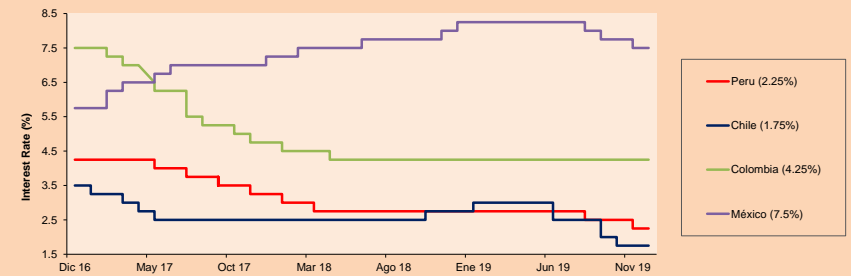


Base: 10/06/19=100
Source: Bloomberg

ETFs

	Curr.	Close	1D	5D	30 D	YTD	Exchange
▲ iShares MSCI All Peru Caped Index Fund	USD	34.4185	0.05%	0.20%	-2.83%	-1.24%	NYSE Arca
▲ iShares MSCI Mexico Capped	USD	32.6	0.15%	8.70%	-2.31%	-19.77%	Cboe BZX
▲ Global X MSCI Colombia	USD	13.02	0.97%	3.99%	-4.61%	18.88%	NYSE Arca
▲ iShares MSCI Emerging Markets	USD	43	-0.49%	-1.19%	-4.64%	6.54%	NYSE Arca
▲ Vanguard FTSE Emerging Markets	USD	43.07	0.58%	1.25%	-1.58%	11.11%	NYSE Arca
▲ Vanguard Core MSCI Emerging Markets	USD	42.65	0.38%	1.40%	-0.70%	14.36%	NYSE Arca
▲ iShares Core MSCI Emerging Markets	USD	51.78	0.52%	1.19%	-1.41%	10.92%	NYSE Arca
▲ iShares JP Morgan Emerging Markets Bonds	USD	57.545	0.13%	0.89%	-2.76%	4.13%	Cboe BZX
▼ Morgan Stanley Emerging Markets Domestic	USD	6.77	-0.29%	-1.17%	-3.01%	19.24%	New York

MILA: Policy Rate



Source: Bloomberg

Capital Market Laboratory Coodinator: Economist Bruno Bellido Anicama
Collaboration: Juan Carlos Figueroa, Alonso Butters, Jeanpierre León y Manuel Muñoz Najjar
e-mail: pulsobursatil@ulima.edu.pe
facebook: www.facebook.com/pulsobursatil.ul
Phone number : 4376767 Annex: 35340

PULSO BURSÁTIL

LIMA

Stocks

Ticker	Currency	Price	1D*	5D*	30D*	YTD*	Frequency	Volume (US\$)	Beta	Dividend Yield (%)	Price Earning	Market Cap. (M US\$)	Economic Sector*	Index Weight
▲ ALICORC1 PE**	S/.	8.54	0.47%	-2.95%	-7.17%	-12.26%	100.00%	1,348,032	0.63	2.81	16.42	2,160.87	Industrial	3.53%
- ATACOCB1 PE**	S/.	0.13	4.17%	0.00%	-26.47%	-61.18%	60.00%	2,238	#N/A #N/A	0.00	3.36	34.97	Mining	1.02%
- BACKUSI1 PE**	S/.	27.30	0.00%	2.26%	13.39%	41.42%	75.00%	3,799	0.37	0.00	8.05	10,247.79	Industrial	0.82%
▲ BAP PE**	US\$	208.29	1.60%	-0.86%	-1.98%	-2.36%	100.00%	47,502	1.31	4.03	-	16,613.52	Diverse	5.82%
▼ BVN PE**	US\$	14.80	-2.31%	-3.27%	-5.80%	-7.57%	90.00%	38,840	1.41	0.56	-	4,079.39	Mining	5.88%
▲ CASAGRC1 PE**	S/.	2.80	3.17%	0.00%	-13.33%	-35.71%	100.00%	1,806,864	0.65	0.49	15.26	64.85	Agricultural	1.31%
▲ BBVAC1 PE**	S/.	3.40	0.89%	1.19%	-2.30%	-2.02%	100.00%	31,207	0.50	4.06	12.47	5,924.59	Finance	2.85%
▲ CORAREI1 PE**	S/.	0.84	1.20%	-3.45%	8.25%	30.43%	100.00%	7,908	0.88	7.83	4.08	342.79	Industrial	1.72%
▲ CPACASC1 PE**	S/.	6.10	0.99%	1.79%	-2.80%	0.21%	100.00%	59,960	0.66	5.90	33.89	770.83	Industrial	2.38%
▲ CVERDEC1 PE**	US\$	17.70	1.14%	-1.72%	-3.07%	-13.38%	95.00%	29,263	0.88	2.42	-	6,195.99	Mining	5.25%
- ENGEPEC1 PE**	S/.	2.32	0.00%	-1.28%	-3.21%	25.81%	75.00%	3,435	0.79	0.00	12.61	1,949.99	Public Services	1.44%
- ENDISPC1**	S/.	6.88	0.00%	0.44%	-4.16%	34.45%	70.00%	663	0.58	0.00	10.78	1,300.80	Public Services	0.98%
- FERREYC1 PE**	S/.	2.12	0.00%	-0.93%	0.52%	-7.87%	100.00%	429,616	0.96	4.83	7.96	612.44	Diverse	4.90%
▲ GRAMONC1 PE**	S/.	1.48	4.23%	2.78%	-1.99%	-25.63%	100.00%	8,404,660	0.89	0.00	-	382.08	Diverse	4.05%
▼ IFS PE**	US\$	39.34	-0.15%	-1.53%	-4.47%	-2.73%	100.00%	63,026	0.98	4.45	11.55	4,541.71	Diverse	7.22%
- INRETC1 PE**	US\$	36.00	0.00%	2.27%	4.96%	28.34%	100.00%	366,132	0.66	0.95	29.61	3,701.06	Diverse	5.28%
- LUSURC1 PE**	S/.	24.00	0.00%	0.04%	4.35%	129.38%	100.00%	14,391,049	0.62	3.50	19.21	3,460.30	Public Services	1.81%
▲ MINSUR1 PE**	S/.	1.42	0.71%	-4.05%	-7.19%	7.58%	85.00%	99,419	1.27	5.33	6.15	1,212.13	Mining	3.09%
- PML PE**	US\$	0.08	0.00%	0.00%	-6.25%	-57.14%	35.00%	3,789	1.34	0.00	-	19.79	Mining	2.12%
▲ RELAPAC1 PE**	S/.	0.09	1.10%	-3.16%	-8.00%	-26.98%	100.00%	7,411	0.85	0.00	-	226.61	Industrial	2.12%
▲ SCCO PE**	US\$	39.00	2.09%	2.82%	4.06%	35.26%	95.00%	216,246	1.30	5.24	20.53	30,149.30	Mining	2.14%
- SIDERC1 PE**	S/.	0.68	0.00%	-2.86%	6.25%	40.79%	90.00%	243,208	1.43	0.00	7.73	247.23	Industrial	1.43%
▼ TV PE**	US\$	0.15	-1.33%	1.37%	-10.84%	-50.17%	100.00%	5,070	1.69	0.00	-	120.49	Mining	2.93%
▲ UNACEMC1 PE**	S/.	2.00	3.63%	0.00%	-5.08%	-21.35%	90.00%	23,684	0.62	2.60	10.16	1,076.64	Industrial	3.00%
▲ VOLCABC1 PE**	S/.	0.34	1.49%	-0.87%	-12.82%	-52.11%	100.00%	24,480	1.45	0.00	-	1,933.82	Mining	5.90%
- NEXAPEC1 PE**	S/.	3.15	0.00%	-2.17%	-8.70%	-14.19%	55.00%	9,351	1.08	0.00	30.13	1,233.14	Mining	1.56%

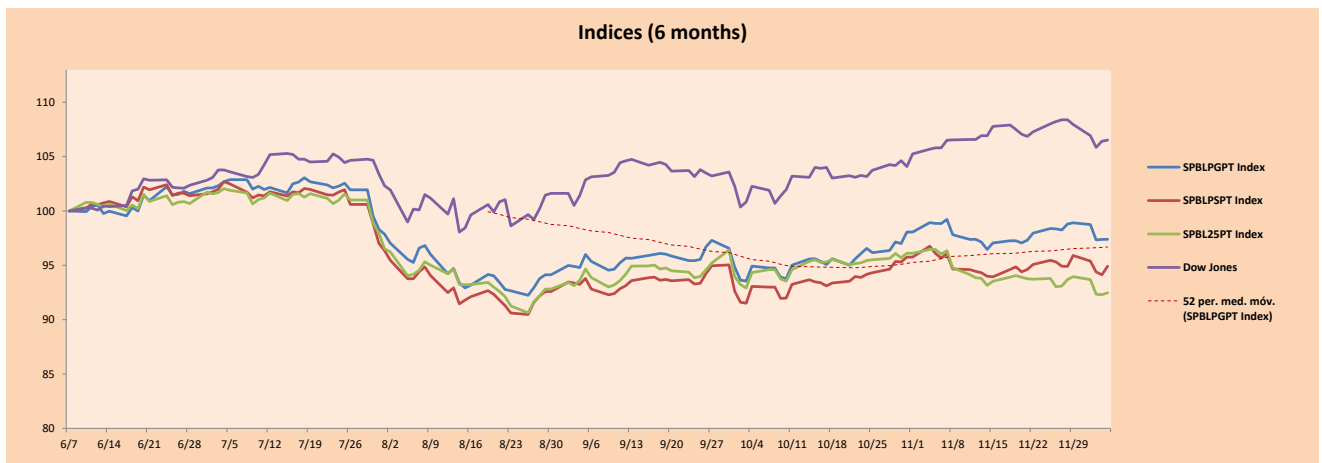
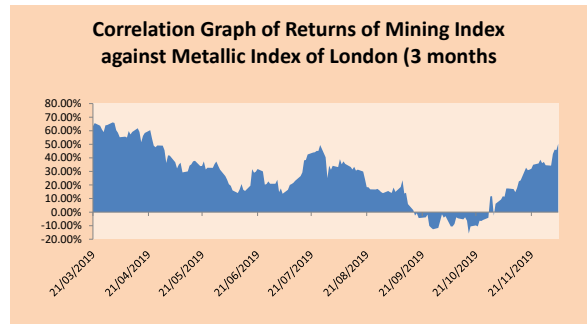
Quantity of shares: 26
Source: Bloomberg, Económica
* Bloomberg Industry Classification System
** PER is used in the stock market and original currency of the instrument
*Legend: Variation 1D: 1 Day; 5D: 5 Days; 1M: 1 Month; YTD: Var.% 12/31/18 to date

Up 14
Down 3
Hold 9

Sectorial Indices

	Close	1D*	5D*	30D*	YTD*	Beta
▼ Mining Index	288.96	-0.08%	-1.27%	-1.69%	1.45%	1.37
▲ Consumer Index	1,106.92	0.18%	-0.18%	1.39%	10.07%	0.38
▲ Industrial Index	202.22	1.68%	0.27%	-1.46%	-10.88%	0.62
▲ Banking and Financial Index	1,175.54	1.39%	-1.62%	-1.14%	-2.04%	1.26
▲ Construction Index	216.85	2.46%	0.86%	-2.25%	-11.81%	0.46
▲ Services Index	627.93	0.00%	-0.38%	1.24%	57.93%	0.20
▼ Juniors Index	15.69	-0.06%	-0.82%	-8.51%	-46.71%	0.21
- Electric Index	613.02	0.00%	-0.38%	1.24%	57.93%	0.20

*Legend: Variation 1D: 1 Day; 5D: 5 Days; 1M: 1 Month; YTD: Var.% 12/31/18 to date



Source: Bloomberg

Capital Market Laboratory Coordinador: Economist Bruno Bellido Anicama
Collaboration: Juan Carlos Figueroa, Alonso Butter, Jeanpiere León y Manuel Muñoz Najjar
e-mail: pulsobursatil@ulima.edu.pe
facebook: www.facebook.com/pulsobursatil.ul
Phone number : 4376767 Annex: 35340

The content of this document is just for informational purposes. The information and opinions expressed should not be consider as recommendations for future decisions. Under any circumstances, the Capital Market Laboratory of University of Lima will be responsible for the use of the statements in this document.

PULSO BURSÁTIL

SOVEREIGN RATING

RISK RATINGS

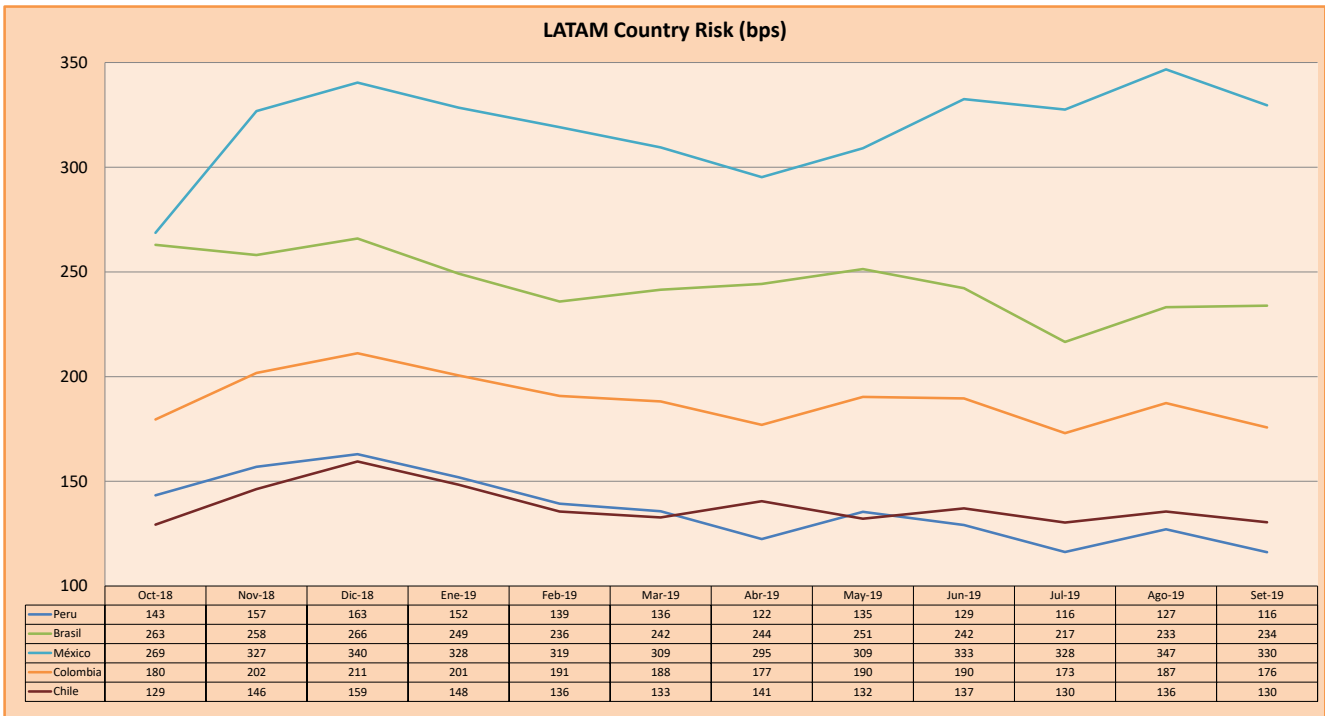
Moody's	S&P	Fitch		
Aaa	AAA	AAA	Prime	
Aa1	AA+	AA+	High credit quality	
Aa2	AA	AA		
Aa3	AA-	AA-		
A1	A+	A+	Medium-high grade, with low credit risk	
A2	A	A		
A3	A-	A-		
Baa1	BBB+	BBB+	Moderate Credit Risk	
Baa2	BBB	BBB		
Baa3	BBB-	BBB-		
Ba1	BB+	BB+	It has speculative elements and it is subject to substantial credit risk	
Ba2	BB	BB		
Ba3	BB-	BB-		
B1	B+	B+	It is considered speculative and it has high credit risk	
B2	B	B		
B3	B-	B-		
Caa1	CCC+	CCC	Bad credit conditions and it is subject to high credit risk	
Caa2	CCC			
Caa3	CCC-			
Ca	C	DDD	Very close to default or in default	
C	D			DD
				D

Source: Bloomberg

Latin America Credit Rating			
Clasificadora de riesgo			
Country	Moody's	Fitch	S&P
Peru	A3	BBB+	BBB+
Mexico	A3	BBB	BBB+
Venezuela	C	WD	SD
Brazil	Ba2	BB-	BB-
Colombia	Baa2	BBB	BBB-
Chile	A1	A	A+
Argentina	Caa2 *	CC	CCC-
Panama	Baa1	BBB	BBB+

Source: Bloomberg

LATAM Country Risk (bps)



Source: BCRP

Capital Market Laboratory Coordinator: Economist Bruno Bellido Anicama
 Support: Juan Carlos Figueroa, Alonso Butters, Jeanpiere León y Manuel Muñoz Najara
 e-mail: pulsobursatil@ulima.edu.pe
 facebook: www.facebook.com/pulsobursatil.ul
 Phone number : 4376767 Annex: 35340

The content of this document is just for informational purposes. The information and opinions expressed should not be considered as recommendations for future decisions. Under any circumstances, the Capital Market Laboratory of University of Lima will be responsible for the use of the statements in this document.