



PULSO BURSÁTIL

Lima, december 2, 2019

MILA

Main Indexes	Close	1 D	5 D	1 M	YTD	Cap. Burs. (US\$ bill)
▼ IPSA (Chile)	4,501.58	-0.82%	-3.23%	-5.11%	-11.83%	115.79
▼ IGPA (Chile)	22,523.20	-0.80%	-3.21%	-5.52%	-13.20%	144.43
▲ IGBC (Colombia)	13,290.88	0.78%	0.00%	-0.59%	19.26%	100.60
▲ COLCAP (Colombia)	1,598.33	-0.84%	-0.15%	-2.89%	20.54%	99.36
▼ S&P/BVL (Perú)*	20,044.38	-0.17%	0.36%	0.70%	3.59%	92.12
▼ S&P/BVL SEL (Perú)	514.33	-0.53%	-0.06%	-0.37%	0.39%	72.41
▼ S&P/BVL LIMA 25	24,222.54	-0.29%	-0.12%	-2.52%	-8.62%	86.34
▼ IPC (México)	42,544.14	-0.64%	-2.28%	-2.90%	2.17%	271.82
▲ S&P MILA 40	552.18	1.57%	-2.38%	-8.03%	-9.27%	233.11

Equity

Largest gains	Exchange	Amt.	Price	▲%	Largest losses	Exchange	Amt.	Price	▼%
TELEFBC1	Lima	PEN	1.00	6.38	MOROCCI1	Lima	PEN	0.83	-4.60
EXITO	Colomb.	COP	14680.00	4.86	BROCALI1	Lima	PEN	1.80	-4.26
CAMANCHACA	Santia.	CLP	52.00	4.00	VOLCABC1	Lima	PEN	0.33	-3.79
HABITAT	Santia.	CLP	652.37	3.47	PERENBC1	Lima	PEN	14.50	-3.33

Per Turnover

	Exchange	Amount (US\$)
SK	Santia.	36,203,739
SQM-B	Santia.	15,586,709
BSANTANDER	Santia.	11,778,694
	Santia.	9,653,819
PFBCOLOM	Colomb.	7,487,852

Per Volume

	Exchange	Volume
BSANTANDER	Santia.	221,259,443
CHILE	Santia.	95,896,345
VAPORES	Santia.	40,601,807
SK	Santia.	29,984,912
CAMANCHACA	Santia.	15,033,373

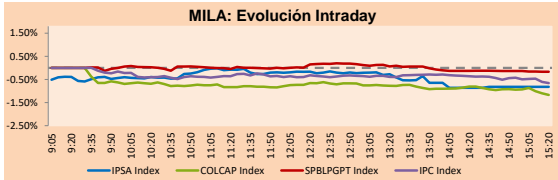
MILA

Peru: The General BVL index ended today's session with a negative result of -0.17%. The index maintains a positive trend in local currency of + 3.59%, while the adjusted yield in dollars amounts to + 2.67%. Then, the S&P / BVL Peru SEL varied by -0.53%, while the S & P / BVL LIMA 25 varied by -0.29%. The PEN spot reached 5 / 3.3910. Headline: Loans for microentrepreneurs grew 425% in value during the last decade.

Chile: The IPSA index closed today with a negative return of -0.82%. The sectors with the worst results were Information Technology (-2.62%) and Non-basic consumer products (-2.16%). On the other hand, the most affected values were Viña Concha y Toro SA (-3.06%) and Sonda SA (-2.62%). Headline: Unemployment in Chile falls slightly to 7.0% in the quarter from August to October.

Colombia: The COLCAP index closed the day today with a negative return of -0.84%. The sectors with the worst results were Energy (-1.90%) and Public Services (-1.89%). On the other hand, the most affected values were Interconecne Eléctrica SA ESP (-3.27%) and Cementos Argos SA (-3.00%). Headline: Unemployment in Colombia does not yield: in October it increased again.

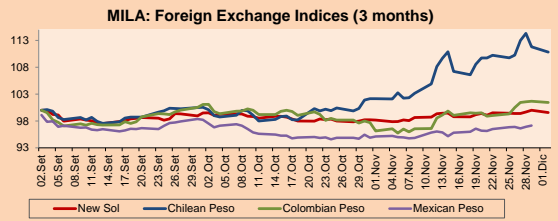
Mexico: The MEXBOL index closed today with a negative yield of -0.64%. The sectors with the best results were Health (-2.19%) and Communication Services (-1.40%). On the other hand, the most affected values were Grupo Financiero Banorte SAB (-2.52%) and Banco Santander México SA Inst (-2.39%). Headline: The country risk of Mexico adds two weeks downwards.



Source: Bloomberg

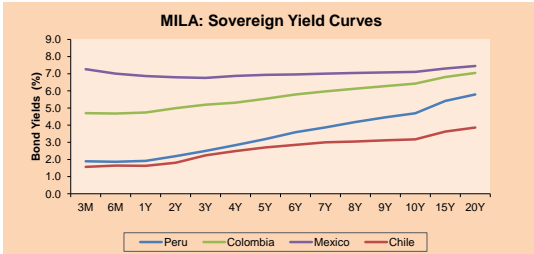
Currency	Price	1D*	5D*	30 D*	YTD*
▼ New Sol (PEN)	3,3915	-0.39%	0.15%	1.39%	0.67%
▼ Chilean Peso (CLP)	803.38	-0.87%	0.97%	8.49%	15.83%
▼ Colombian Peso (COP)	3,508.77	-0.23%	2.14%	5.50%	7.97%
▲ Mexican Peso (MXN)	19.58	0.24%	0.68%	2.37%	-0.37%

*Legend: Variation 1D: 1 day; 5D: 5 days; 1M: 1 Month; YTD: Var%12/31/18 to date

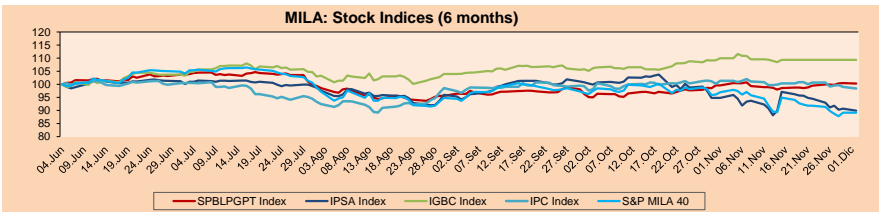


Base: 02/09/19=100
Source: Bloomberg

Fixed Income	Bid Yield (%)	Ask Yield (%)	Duration
PERU 4.125 08/25/2027	USD 111.933	2.44	2.40 6.64
PERU 7.35 07/21/25	USD 126.205	2.38	2.33 4.68
PERU 8.75 11/21/33	USD 164.21	3.08	3.05 9.50
PERU 6.55 03/14/37	USD 144.993	3.16	3.14 11.15
PERU 5.625 11/18/2050	USD 144.842	3.31	3.29 17.60
CHILE 2.25 10/30/22	USD 100.062	2.30	2.16 2.79
CHILE 3.875 08/05/20	USD 101.236	2.22	1.79 0.66
CHILE 3.625 10/30/2042	USD 107.383	3.18	3.16 15.97
COLOM 11.75 02/25/20	USD 102.425	1.45	0.40 0.23
COLOM 11.85 03/09/28	USD 159.529	3.53	3.46 5.92
COLOM 10.375 01/28/33	USD 158.684	4.49	4.38 8.34
COLOM 7.375 09/18/37	USD 139.48	4.22	4.18 11.12
MEX 4 10/02/23	USD 105.716	2.47	2.39 3.53
MEX5.55 01/45	USD 120.997	4.193	4.188 14.52



Source: Bloomberg

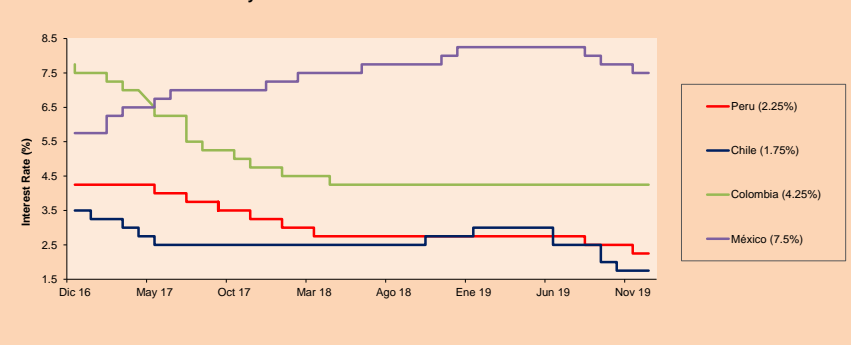


Base: 05/06/19=100
Source: Bloomberg

ETFs

	Curr.	Close	1D	5D	30 D	YTD	Exchange
▲ iShares MSCI All Peru Caped Index Fund	USD	34.46	0.32%	-0.26%	-4.46%	-1.12%	NYSE Arca
▲ iShares MSCI Mexico Capped	USD	30.2	0.70%	-4.49%	-14.23%	-25.67%	Cboe BZX
▲ Global X MSCI Colombia	USD	12.54	0.15%	-2.75%	-6.22%	14.50%	NYSE Arca
▲ iShares MSCI Emerging Markets	USD	43.1	-0.97%	-2.95%	-4.52%	6.79%	NYSE Arca
▲ Vanguard FTSE Emerging Markets	USD	42.07	0.02%	-1.27%	-1.01%	12.80%	NYSE Arca
- iShares Core MSCI Emerging Markets	USD	51.17	0.00%	-1.63%	-1.52%	9.61%	NYSE Arca
▲ iShares JP Morgan Emerging Markets Bonds	USD	56.99	-0.09%	-2.03%	-3.36%	3.12%	Cboe BZX
▼ Morgan Stanley Emerging Markets Domestic	USD	6.83	-0.29%	-0.73%	-2.43%	20.30%	New York

MILA: Policy Rate



Source: Bloomberg

Capital Market Laboratory Coodinator: Economist Bruno Bellido Anicama
Collaboration: Juan Carlos Figueroa, Alonso Butters, Jeanpire León y Manuel Muñoz Najar
e-mail: pulsobursatil@ulima.edu.pe
facebook: www.facebook.com/pulsobursatil.ul
Phone number : 4376767 Annex: 35340

PULSO BURSÁTIL

WORLD

Main Indices	Close	1 D*	5 D*	1 M*	YTD*	Market Cap. (US\$ Mill.)
▼ Dow Jones (USA)	27,783.04	-0.96%	-0.33%	1.59%	19.10%	7,921,596
▼ Standard & Poor's 500 (USA)	3,113.87	-0.86%	0.12%	1.53%	24.21%	27,063,579
▼ NASDAQ Composite (USA)	8,567.99	-1.12%	0.56%	2.17%	29.13%	13,372,195
▼ Stoxx EUROPE 600 (Europe)	401.01	-1.58%	-1.73%	0.40%	18.77%	9,751,407
▼ DAX (Germany)	12,964.68	-2.05%	-2.13%	0.03%	22.78%	1,090,191
▼ FTSE 100 (United Kingdom)	7,285.94	-0.82%	-1.49%	-0.23%	8.29%	1,502,275
▼ CAC 40 (France)	5,786.74	-2.01%	-2.33%	0.43%	22.32%	1,604,690
▼ IBEX 35 (Spain)	9,156.30	-2.09%	-1.76%	-1.84%	7.22%	518,223
▼ MSCI AC Asia Pacific Index	163.75	-0.95%	-0.71%	0.06%	11.62%	19,581,814
▲ HANG SENG (Hong Kong)	26,444.72	0.37%	-2.03%	2.32%	2,420,059	
▲ SHANGHAI SEC Comp. (China)	2,875.81	0.13%	-1.04%	-2.79%	15.31%	4,568,737
▲ NIKKEI 225 (Japan)	23,529.50	1.01%	1.02%	2.97%	17.56%	3,540,625
▲ BOVESPA (Brazil)	108,927.80	0.64%	0.46%	0.68%	23.94%	779,071
▲ Merval (Argentina)	33,446.93	-3.05%	-0.14%	-6.42%	10.41%	19,944

*Legend: Variation 1D: 1 Day; 5D: 5 Days; 1M: 1 Month; YTD: Var.% 12/31/18 to date

Equity

Alemania (Acciones del DAX Index)

Largest gains	Curr.	Price	▲%	Exchange	Largest losses	Curr.	Price	▼%	Exchange
VOW3 GY	EUR	174.78	-0.40	Xetra	SAP GY	EUR	119.44	-3.27	Xetra
SIE GY	EUR	116.2	-0.79	Xetra	LIN GY	EUR	180.4	-3.07	Xetra
BAS GY	EUR	67.58	-0.94	Xetra	WDI GY	EUR	116.15	-3.05	Xetra
FME GY	EUR	65.82	-1.11	Xetra	ADS GY	EUR	275.05	-2.72	Xetra

Europe (Stocks from STOXX EUROPE 600)

Largest gains	Curr.	Price	▲%	Exchange	Largest losses	Curr.	Price	▼%	Exchange
RMG LN	GBP	215.5	3.36	Londres	UTDI GY	EUR	29.04	-5.56	Xetra
SPL PW	PLN	281.8	2.47	Warsaw	RWE GY	EUR	25.45	-5.43	Xetra
HUNHV FH	EUR	40.71	2.16	Helsinki	REC IM	EUR	36.16	-5.02	Borsa Italiana
VWS DC	DKK	658	1.95	Copenhagen	EVT GY	EUR	19.15	-4.77	Xetra

Global Overview:

United States:

The main indexes of the US market ended the session down, due to negative economic data of the country, since the ISM index (main leading indicator of manufacturing activity) scored 48.1, below 50 points and indicating that this important sector of the US economy is in negative territory for more than two months, also, the Department of Commerce reported that the construction sector fell -0.8%, its largest fall in 3 years, due to a decline in private investment. On the other hand, trade tensions resurfaced after President Trump imposed tariffs against Brazil and Argentina, claiming that they manipulated their currencies to increase the competitiveness of their exports to the US. In corporate news, among the shares that presented positive returns, Steel Corp and AK Steel Holding Corp stood out, which rose +3.5% and 5.6%, being favored by the tariffs imposed by Mr. Trump. Otherwise, the action of Roku Inc was one of the worst performers, after the investment bank, Morgan Stanley, reduced its recommendation on the share to "underweight". Finally, the market is monitoring the behavior of the shares of the retail sector, after a record of \$ 1.6 billion of purchases was sold on "Black Friday".

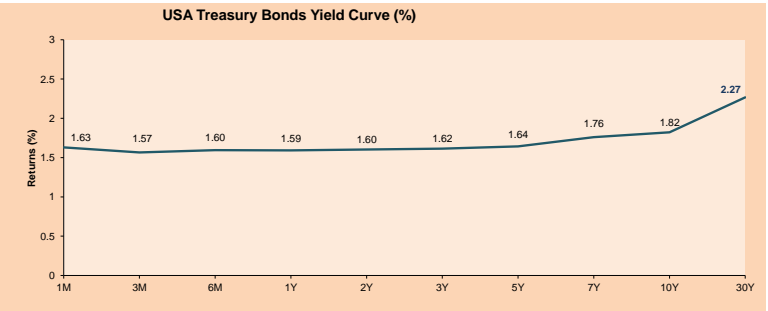
Europe:

European markets closed today's session in negative territory, amid new announcements by President Donald Trump to impose tariffs on Brazil and Argentina and weaker data from Europe's manufacturing sector. Likewise, investors continue to monitor the development of the "first phase" agreement between the US and China. D. Trump commented on Twitter that he would put back into effect the tariffs on aluminum and steel in Argentina and Brazil, claiming that the two countries devalued their currencies and harmed US farmers. Regarding Europe, manufacturing activity decreased for the tenth consecutive month in November, according to official reports. However, IHS Markit announced that the worst may have happened to factories in the area. Thus, the STOXX 600 -1.58%, DAX -2.05%, FTSE 100 -0.82%, CAC -2.01%, FTSE MIB -2.28% and BEL 20 -1.09%, among other indexes. Regarding corporate shares, company Cadaca de Great Britain ended in red -7% after the announcement of a \$ 647 million convertible bond issue to finance the construction of robotic warehouses for partners abroad.

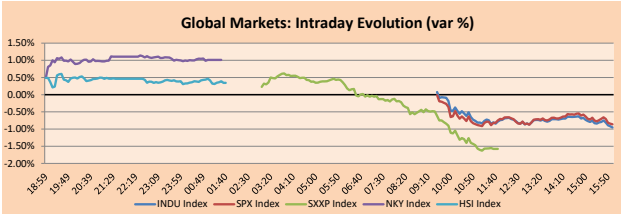
Asia:

The Asian market closed the day today with mixed results of its main indexes. Nikkei 225 (+1.01%), Hang Seng (+0.37%), S & P / ASX 200 (+0.24%), Nifty 50 (-0.07%) and IDAX Composite (+1.97%). On the other hand, the Tokyo stock exchange today achieved its maximum close in 14 months, and although it advanced 1.01%. Being driven by good economic data from Japan and China, as well as the optimistic prospects of the technology sector. Also, the index was affected by the publication about the figures on manufacturing activity in China in November, when it registered the steepest rise since December 2016. Several Japanese analysts highlighted the gains made in the technology sector, thanks to the good sales of black Friday and Christmas campaigns. Among the values with the greatest variations were the manufacturer of Toyota vehicles with a variation of 1.39%, while the technology giant Softbank lost 0.12%. In other news, China's manufacturing industry grew again in November. The purchasing manager index (PMI) stood at 50.2, nine tenths more than the previous month, as reported by the National Statistical Office (ONE) of the Asian giant.

ETFs	Curr.	Close	1D	5D	30 D	YTD	Exchange
SPDR S&P 500 ETF TRUST	USD	311.64	-0.85%	-0.55%	1.80%	26.44%	NYSE Arca
ISHARES MSCI EMERGING MARKET	USD	42.53	-0.02%	-1.78%	-1.60%	9.72%	NYSE Arca
ISHARES IBOXX HIGH YLD CORP	USD	86.54	-0.07%	-0.05%	0.07%	11.87%	NYSE Arca
FINANCIAL SELECT SECTOR SPDR	USD	29.96	-0.63%	-0.50%	2.88%	27.71%	NYSE Arca
VANECK GOLD MINERS	USD	27.17	0.33%	3.70%	-3.00%	28.83%	NYSE Arca
ISHARES RUSSELL 2000 ETF	USD	160.19	-0.98%	-0.86%	1.32%	20.80%	NYSE Arca
SPDR GOLD SHARES	USD	137.79	-0.05%	0.52%	-3.35%	13.64%	NYSE Arca
ISHARES 20+ YEAR TREASURY BO	USD	138.31	-1.33%	-1.26%	-1.43%	16.32%	NASDAQ GM
INVESCO QQQ TRUST SERIES 1	USD	203.00	-1.02%	-0.60%	2.08%	32.39%	NASDAQ GM
ISHARES NASDAQ BIOTECHNOLOGY	USD	118.45	-1.00%	0.17%	7.83%	23.01%	NASDAQ GM
ENERGY SELECT SECTOR SPDR	USD	58.89	0.00%	-1.87%	-0.66%	5.39%	NYSE Arca
PROSHARES ULTRA VIX ST FUTUR	USD	160.19	5.94%	6.87%	-12.60%	-80.58%	NYSE Arca
UNITED STATES OIL FUND LP	USD	11.67	0.43%	-3.63%	-0.17%	20.81%	NYSE Arca
ISHARES MSCI BRAZIL ETF	USD	43.07	1.41%	0.84%	-4.48%	14.18%	NYSE Arca
SPDR S&P OIL & GAS EXP & PR	USD	20.37	0.05%	-4.05%	-6.77%	-22.50%	NYSE Arca
UTILITIES SELECT SECTOR SPDR	USD	62.64	-0.65%	-0.24%	-2.26%	21.13%	NYSE Arca
ISHARES US REAL ESTATE ETF	USD	91.82	-1.48%	-0.25%	-2.52%	25.23%	NYSE Arca
SPDR S&P BIOTECH ETF	USD	92.32	-1.42%	0.47%	10.35%	28.67%	NYSE Arca
ISHARES IBOXX INVESTMENT GRA	USD	127.07	-0.43%	-0.39%	-0.06%	16.24%	NYSE Arca
ISHARES JP MORGAN USD EMERGI	USD	111.26	-0.40%	-0.53%	-1.70%	11.72%	NASDAQ GM
REAL ESTATE SELECT SECT SPDR	USD	37.94	-1.84%	-0.55%	-3.29%	24.89%	NYSE Arca
ISHARES CHINA LARGE-CAP ETF	USD	40.95	0.02%	-2.52%	-2.50%	5.85%	NYSE Arca
CONSUMER STAPLES SPDR	USD	62.14	0.23%	1.25%	1.62%	24.71%	NYSE Arca
VANECK JR GOLD MINERS	USD	38.26	0.23%	5.43%	-2.89%	26.60%	NYSE Arca
SPDR BBG BARC HIGH YIELD BND	USD	107.76	-0.08%	0.03%	0.01%	12.52%	NYSE Arca
VANGUARD REAL ESTATE ETF	USD	91.66	-1.51%	-0.20%	-2.78%	25.99%	NYSE Arca
GRAYSACLE BITCOIN TRUST BTC	USD	8.99	-6.06%	-0.55%	-19.73%	126.73%	OTC US



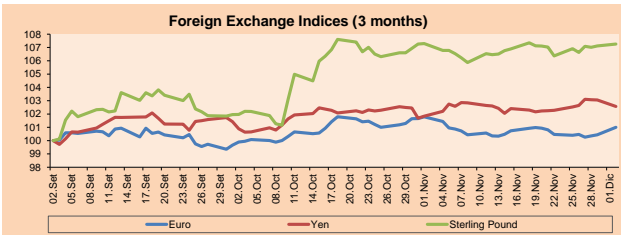
Source: Bloomberg



Source: Bloomberg

Currency	Price	1 D*	5 D*	1 M*	YTD*
▲ Euro	1.1079	0.55%	0.59%	-0.78%	-3.38%
▲ Yen	108.9800	-0.47%	0.05%	0.73%	-0.65%
▲ Sterling Pound	1.2939	0.11%	0.30%	-0.05%	1.45%
▲ Yuan	7.0393	0.10%	0.04%	0.03%	2.34%
▼ Hong Kong Dollar	7.8285	0.00%	0.03%	-0.10%	-0.04%
▼ Brazilian Real	4.2169	-0.48%	-0.25%	5.65%	8.84%
▲ Argentine Peso	59.9650	0.10%	0.42%	0.40%	59.19%

*Legend: Variation 1D: 1 Day; 5D: 5 Days; 1M: 1 Month; YTD: Var.% 12/31/18 to date

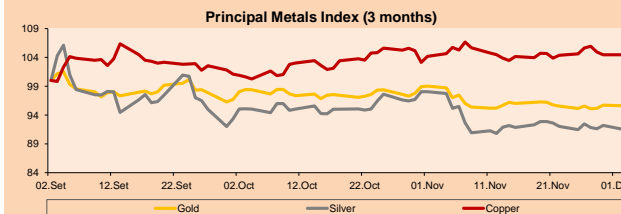


Base: 02/09/19=100

Source: Bloomberg

Commodities	Close	1 D*	5 D*	1 M*	YTD*
▼ Oro (US\$ Oz. T) (LME)	1,462.45	-0.10%	0.49%	-3.43%	14.04%
▼ Plata (US\$ Oz. T) (LME)	16.91	-0.71%	0.10%	-6.63%	9.13%
▼ Cobres (US\$ T) (LME)	5,843.25	0.00%	-0.14%	0.28%	-1.78%
▼ Zinc (US\$ T) (LME)	2,299.50	0.00%	-0.26%	-10.91%	-8.70%
▲ Petróleo WTI (US\$ Barril) (NYM)	55.96	1.43%	-3.53%	-0.55%	15.38%
▼ Estano (US\$ T) (LME)	16,504.00	0.00%	0.28%	0.12%	-15.45%
▼ Plomo (US\$ T) (LME)	1,922.75	0.00%	0.29%	-11.40%	-4.20%
▼ Azúcar #11 (US\$ Libra) (NYB-ICE)	12.75	-1.47%	-0.55%	2.16%	-3.04%
▼ Cacao (US\$ T) (NYB-ICE)	2,544.00	-0.93%	-2.08%	1.72%	2.91%
▲ Café Arabica (US\$ T) (NYB-ICE)	122.00	2.48%	2.61%	13.44%	3.26%

*Legend: Variación 1D: 1 Día; 5D: 5 Días; 1M: 1 Mes; YTD: Var.% 31/12/17 a la fecha



Base: 02/09/19=100

Source: Bloomberg

Capital Market Laboratory Coordinator: Economist Bruno Bellido Anicama
Collaboration: Juan Carlos Figueroa, Alonso Butters, Jeanpierre León y Manuel Muñoz Najar
e-mail: pulso_bursatil@ulima.edu.pe
facebook: www.facebook.com/pulso_bursatil
Phone number: 4376767 Annex: 35340

PULSO BURSÁTIL

LIMA

Stocks

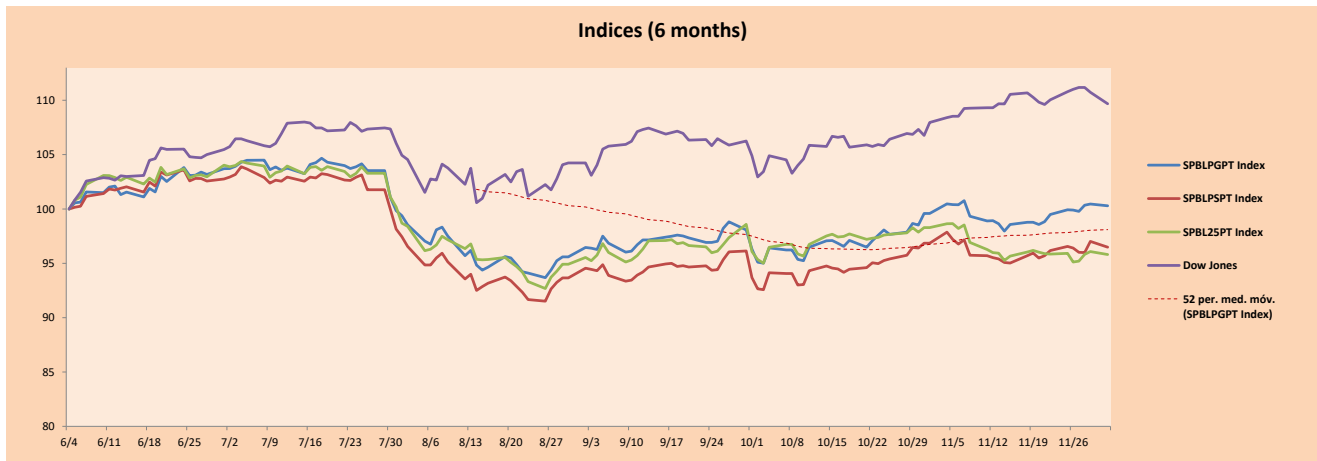
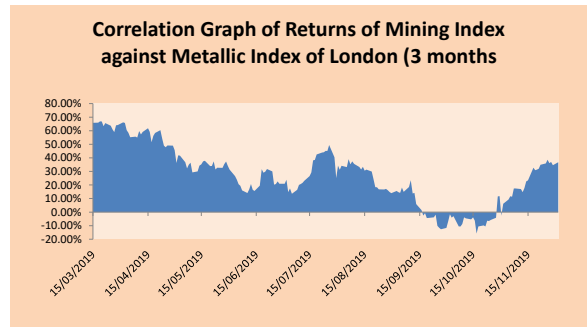
Ticker	Currency	Price	1D*	5D*	30D*	YTD*	Frequency	Volume (US\$)	Beta	Dividend Yield (%)	Price Earning	Market Cap. (M US\$)	Economic Sector*	Index Weight
- ALICORC1 PE**	S/.	8.80	0.00%	-1.12%	-4.03%	-9.59%	100.00%	102,556	0.62	2.73	16.92	2,217.40	Industrial	3.53%
▼ ATACOCB1 PE**	S/.	0.12	-2.40%	-18.67%	-34.05%	-62.11%	55.00%	10,943	#N/A #N/A	0.00	3.27	33.99	Mining	1.02%
▲ BACKUSI1 PE**	S/.	26.70	0.01%	1.90%	13.46%	38.31%	75.00%	12,541	0.37	5.57	7.87	10,104.44	Industrial	0.82%
▲ BAP PE**	US\$	212.00	0.91%	0.90%	-1.00%	-0.62%	100.00%	2,838,046	1.31	3.96	-	16,909.43	Diverse	5.82%
▼ BVN PE**	US\$	15.16	-0.92%	1.07%	-2.02%	-5.32%	80.00%	9,147	1.44	0.55	-	4,178.62	Mining	5.88%
- CASAGRC1 PE**	S/.	2.80	0.00%	0.00%	-12.46%	-35.71%	100.00%	1,760	0.70	0.49	15.26	64.58	Agricultural	1.31%
- BBVAC1 PE**	S/.	3.36	0.00%	0.30%	-4.00%	-3.17%	100.00%	13,375	0.51	4.11	12.33	5,830.55	Finance	2.85%
▼ CORAREI1 PE**	S/.	0.86	-1.15%	2.38%	10.82%	33.54%	100.00%	27,575	0.89	7.65	4.18	342.55	Industrial	1.72%
▲ CPACASC1 PE**	S/.	6.45	1.57%	0.00%	-4.59%	0.00%	100.00%	19,794	0.65	5.85	35.83	811.43	Industrial	2.38%
▼ CVERDEC1 PE**	US\$	18.00	-0.06%	0.56%	2.86%	-11.91%	90.00%	23,706	0.86	2.38	-	6,301.01	Mining	5.25%
- ENGEPEC1 PE**	S/.	2.35	0.00%	0.00%	-2.37%	27.44%	75.00%	28,915	0.79	3.80	12.78	1,967.00	Public Services	1.44%
- ENDISPC1**	S/.	6.85	0.00%	-4.20%	-3.93%	33.87%	70.00%	53,689	0.58	3.36	10.73	1,289.74	Public Services	0.98%
▲ FERREYC1 PE**	S/.	2.15	0.47%	-1.83%	1.46%	-6.56%	100.00%	486,685	0.97	4.77	8.07	618.52	Diverse	4.90%
▲ GRAMONC1 PE**	S/.	1.48	2.78%	13.85%	-9.76%	-25.63%	100.00%	44,740	0.92	0.00	-	380.49	Diverse	4.05%
▲ IFS PE**	US\$	40.45	1.25%	1.89%	-3.00%	0.02%	100.00%	51,485	1.01	4.33	11.93	4,669.86	Diverse	7.22%
▼ INRET1 PE**	US\$	34.70	-1.42%	-3.61%	-0.86%	23.71%	100.00%	133,171	0.69	0.98	28.66	3,567.41	Diverse	5.28%
▲ LUSURC1 PE**	S/.	24.00	0.04%	0.00%	0.84%	129.38%	100.00%	259,064	0.62	3.50	19.21	3,445.92	Public Services	1.81%
- MINSUR1 PE**	S/.	1.48	0.00%	0.00%	2.78%	12.12%	80.00%	6,546	1.27	5.12	6.38	1,258.10	Mining	3.09%
- PML PE**	US\$	0.08	0.00%	-6.25%	-11.76%	-57.14%	35.00%	1,125	1.34	0.00	-	19.79	Mining	2.12%
- RELAPAC1 PE**	S/.	0.10	0.00%	-3.06%	-3.06%	-24.60%	100.00%	2,709	0.86	0.00	-	233.03	Industrial	2.12%
▲ SCCO PE**	US\$	38.00	0.18%	-0.34%	8.09%	31.79%	85.00%	54,200	1.29	5.38	20.00	29,376.24	Mining	2.14%
- SIDERC1 PE**	S/.	0.70	0.00%	7.69%	2.94%	44.93%	95.00%	13,300	1.43	14.59	7.95	253.44	Industrial	1.43%
▼ TV PE**	US\$	0.14	-1.37%	16.13%	-5.88%	-51.52%	95.00%	27,264	1.69	0.00	-	117.24	Mining	2.93%
- UNACEMC1 PE**	S/.	2.00	0.00%	0.00%	-5.48%	-21.35%	95.00%	13,682	0.59	2.60	10.95	1,072.17	Industrial	3.00%
▼ VOLCABC1 PE**	S/.	0.33	-3.79%	-6.25%	-14.73%	-53.52%	100.00%	93,242	1.43	0.00	-	1,918.58	Mining	5.90%
- NEXAPEC1 PE**	S/.	3.22	0.00%	-1.23%	-9.30%	-12.29%	60.00%	435	1.08	16.12	30.67	1,254.35	Mining	1.56%

Quantity of shares: 26
Source: Bloomberg, Economatica
* Bloomberg Industry Classification System
** PER is used in the stock market and original currency of the instrument
*Legend: Variation 1D: 1 Day; 5D: 5 Days; 1M: 1 Month; YTD: Var.% 12/31/18 to date

Sectorial Indices

	Close	1D*	5D*	30D*	YTD*	Beta
▼ Mining Index	290.31	-0.81%	0.41%	2.71%	1.92%	1.38
▼ Consumer Index	1,100.37	-0.77%	-1.62%	0.36%	9.42%	0.39
▲ Industrial Index	203.26	0.79%	1.47%	-2.86%	-10.42%	0.62
▲ Banking and Financial Index	1,201.16	0.52%	1.15%	0.07%	0.10%	1.25
▲ Construction Index	217.03	0.94%	3.08%	-4.72%	-11.73%	0.46
▲ Services Index	630.44	0.02%	-0.99%	0.72%	58.56%	0.20
▼ Juniors Index	15.76	-0.38%	-2.23%	-10.30%	-46.47%	0.22
▲ Electric Index	615.47	0.02%	-0.99%	0.72%	58.56%	0.20

*Legend: Variation 1D: 1 Day; 5D: 5 Days; 1M: 1 Month; YTD: Var.% 12/31/18 to date



Capital Market Laboratory Coordinador: Economist Bruno Bellido Anicama
Collaboration: Juan Carlos Figueroa, Alonso Butter, Jeanpiere León y Manuel Muñoz Najjar
e-mail: pulsobursatil@ulima.edu.pe
facebook: www.facebook.com/pulsobursatil.ul
Phone number : 4376767 Annex: 35340

The content of this document is just for informational purposes. The information and opinions expressed should not be consider as recommendations for future decisions. Under any circumstances, the Capital Market Laboratory of University of Lima will be responsible for the use of the statements in this document.

PULSO BURSÁTIL

SOVEREIGN RATING

RISK RATINGS

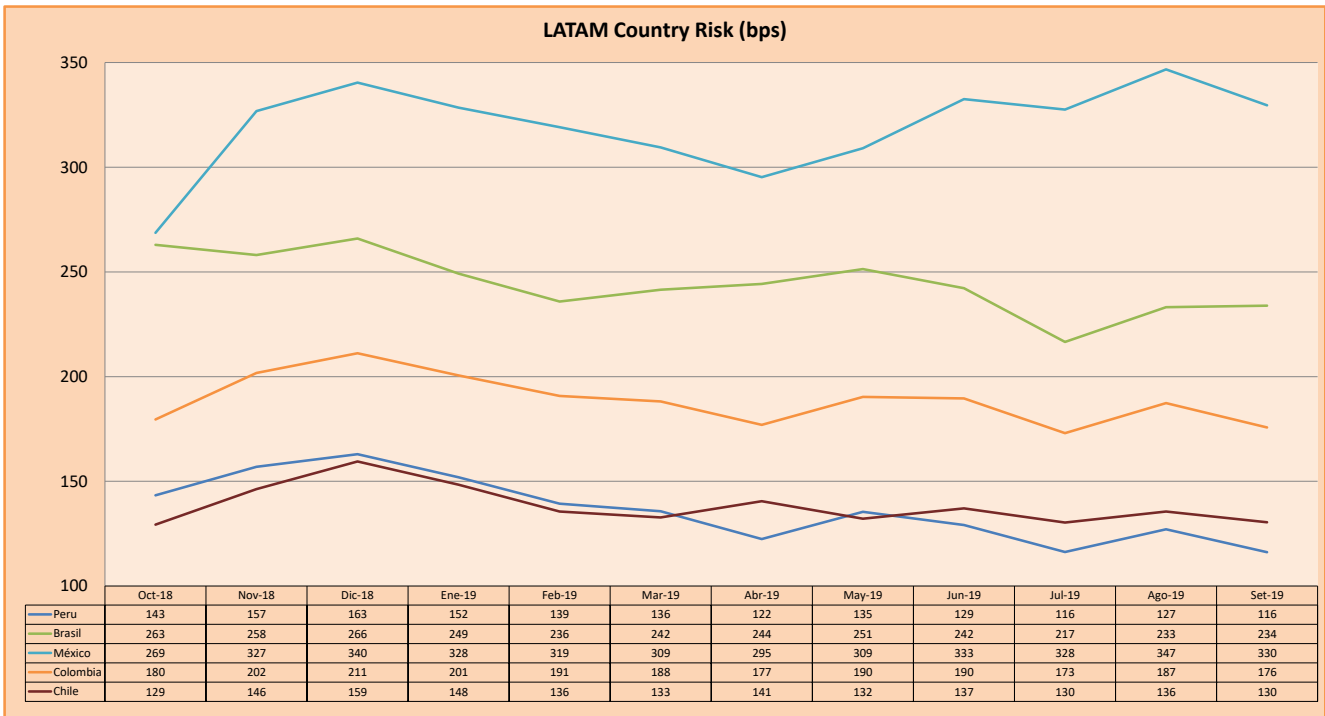
Moody's	S&P	Fitch		
Aaa	AAA	AAA	Prime	
Aa1	AA+	AA+	High credit quality	
Aa2	AA	AA		
Aa3	AA-	AA-		
A1	A+	A+	Medium-high grade, with low credit risk	
A2	A	A		
A3	A-	A-		
Baa1	BBB+	BBB+	Moderate Credit Risk	
Baa2	BBB	BBB		
Baa3	BBB-	BBB-		
Ba1	BB+	BB+	It has speculative elements and it is subject to substantial credit risk	
Ba2	BB	BB		
Ba3	BB-	BB-		
B1	B+	B+	It is considered speculative and it has high credit risk	
B2	B	B		
B3	B-	B-		
Caa1	CCC+	CCC	Bad credit conditions and it is subject to high credit risk	
Caa2	CCC			
Caa3	CCC-			
Ca	C	DDD	Very close to default or in default	
C	D			DD
				D

Source: Bloomberg

Latin America Credit Rating			
Clasificadora de riesgo			
Country	Moody's	Fitch	S&P
Peru	A3	BBB+	BBB+
Mexico	A3	BBB	BBB+
Venezuela	C	WD	SD
Brazil	Ba2	BB-	BB-
Colombia	Baa2	BBB	BBB-
Chile	A1	A	A+
Argentina	Caa2 *	CC	CCC-
Panama	Baa1	BBB	BBB+

Source: Bloomberg

LATAM Country Risk (bps)



Source: BCRP

Capital Market Laboratory Coordinator: Economist Bruno Bellido Anicama
 Support: Juan Carlos Figueroa, Alonso Butters, Jeanpiere León y Manuel Muñoz Najara
 e-mail: pulsobursatil@ulima.edu.pe
 facebook: www.facebook.com/pulsobursatil.ul
 Phone number : 4376767 Annex: 35340

The content of this document is just for informational purposes. The information and opinions expressed should not be considered as recommendations for future decisions. Under any circumstances, the Capital Market Laboratory of University of Lima will be responsible for the use of the statements in this document.