

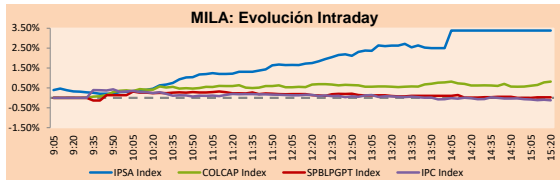


PULSO BURSÁTIL

Lima, december 4, 2019

MILA

Main Indexes	Close	1 D	5 D	1 M	YTD	Cap. Burs. (US\$ bill)
▲ IPSA (Chile)	4,644.98	3.38%	1.06%	-3.26%	-9.02%	116.11
▲ IGPA (Chile)	23,150.19	3.02%	0.75%	-3.97%	-10.79%	144.89
▲ IGBC (Colombia)	13,290.88	0.78%	0.00%	-0.59%	19.26%	101.70
▲ COLCAP (Colombia)	1,612.12	1.40%	1.56%	-2.05%	21.58%	98.51
▲ S&P/BVL (Perú)*	19,766.89	0.04%	-0.88%	-1.56%	2.15%	90.96
▼ S&P/BVL SEL (Perú)	507.50	-0.28%	-0.83%	-2.72%	-0.95%	71.23
▼ S&P/BVL LIMA 25	23,864.35	-0.04%	-0.85%	-4.31%	-9.97%	85.17
▼ IPC (México)	42,191.92	-0.24%	-1.96%	-3.71%	1.32%	271.73
▼ S&P MILA 40	546.34	-0.54%	-0.58%	-9.87%	-10.23%	229.77

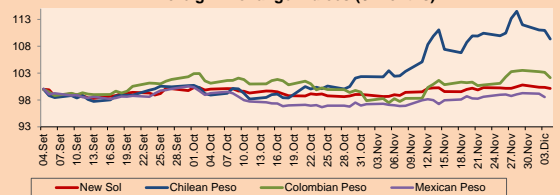


Source: Bloomberg

Currency	Price	1D*	5D*	30 D*	YTD*
▼ New Sol (PEN)	3.3801	-0.28%	-0.14%	1.41%	0.33%
▼ Chilean Peso (CLP)	791.20	-1.45%	-3.39%	6.90%	14.07%
▼ Colombian Peso (COP)	3,471.00	-0.95%	-1.08%	3.95%	6.81%
▼ Mexican Peso (MXN)	19.43	-0.62%	-0.47%	1.37%	-1.10%

*Legend: Variation 1D: 1 day; 5D: 5 days; 1M: 1 Month; YTD: Var%12/31/18 to date

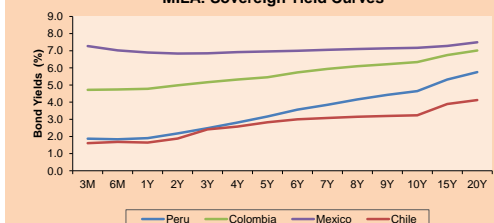
MILA: Foreign Exchange Indices (3 months)

Base: 04/09/19=100
Source: Bloomberg

Fixed Income

		Bid Yield (%)	Ask Yield (%)	Duration
PERU 4.125 08/25/2027	USD	112.02	2.44	2.38
PERU 7.35 07/21/25	USD	126.323	2.36	2.30
PERU 8.75 11/21/33	USD	164.434	3.07	3.03
PERU 6.55 03/14/37	USD	145.124	3.16	3.13
PERU 5.625 11/18/2050	USD	144.979	3.31	3.29
CHILE 2.25 10/30/22	USD	100.149	2.26	2.13
CHILE 3.875 08/05/20	USD	101.227	2.24	1.76
CHILE 3.625 10/30/2042	USD	107.643	3.16	3.14
COLOM 11.75 02/25/20	USD	102.389	1.12	0.51
COLOM 11.85 03/09/28	USD	160.042	3.47	3.40
COLOM 10.375 01/28/33	USD	160.963	4.32	4.21
COLOM 7.375 09/18/37	USD	140.484	4.15	4.12
MEX 4 10/02/23	USD	105.733	2.46	2.38
MEX 5.55 01/45	USD	121.329	4.83	4.16

MILA: Sovereign Yield Curves



Source: Bloomberg

Equity

Largest gains	Exchange	Amt.	Price	▲ %
SALFACORP	Santia.	CLP	444.00	8.24
TV	Lima	USD	0.15	8.15
ILC	Santia.	CLP	7998.80	7.38
VOLCABC1	Lima	PEN	0.34	7.03

Per Turnover

	Exchange	Amount (US\$)
SK	Santia.	20,360,339
CHILE	Santia.	18,838,132
ECOPETROL	Colomb.	11,792,187
COPEC	Santia.	11,174,050
		8,777,899

Largest losses	Exchange	Amt.	Price	▼ %
SIDERC1	Lima	PEN	0.67	-4.29
BROCALC1	Lima	PEN	4.30	-4.02
BVLAC1	Lima	PEN	2.09	-3.24
CASAGRC1	Lima	PEN	2.52	-3.08

Per Volume

	Exchange	Volume
BSANTANDER	Santia.	206,366,067
CHILE	Santia.	182,930,988
VAPORES	Santia.	72,591,907
COLBUN	Santia.	21,222,727
SK	Santia.	16,591,264

MILA

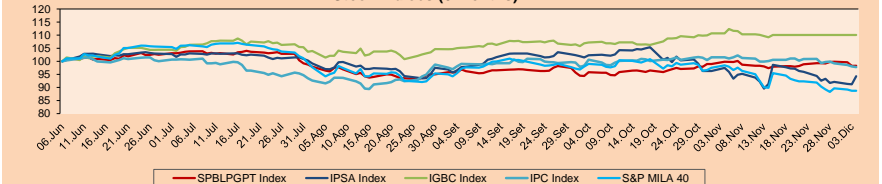
Peru: The General BVL index ended today's session with a positive result of +0.04%. The index maintains a positive trend in local currency of +2.15%, while the adjusted yield in dollars amounts to +1.44%. Then, the S&P / BVL Peru SEL varied by -0.28%, while the S & P / BVL LIMA 25 varied by -0.04%. The PEN spot reached 5 / 3.3801. Headline: 2.6 million of Peruvians save out of the financial system.

Chile: The IPSA index closed today with a positive yield of +3.38%. The sectors with the best results were Non-Basic Consumer Products (+5.69%) and Financial (+5.28%). On the other hand, the values with the highest yields were Salfacorp SA (+8.24%) and Inversiones La Construcción SA (+7.38%). Headline: Fitch: Odds for technical recession due unrest tide.

Colombia: The COLCAP index closed today with a positive yield of +1.40%. The sectors with the best results were Energy (+3.97%) and Materials (+2.09%). On the other hand, the values with the best performance were Ecopetrol SA (+4.06%) and Grupo Argos SA (-4.63%). Headline: In the middle of a strike, the COP strengths and stocks gains.

Mexico: The MEXBOL index closed today with a negative yield of -0.24%. The sectors with the worst results were Materials (-1.45%) and Industrial (-0.64%). On the other hand, the values with the worst returns were Grupo México SAB (-2.46%) and Alfa SAB de CV (-2.41%). Headline: Car sales had its worst November in five years.

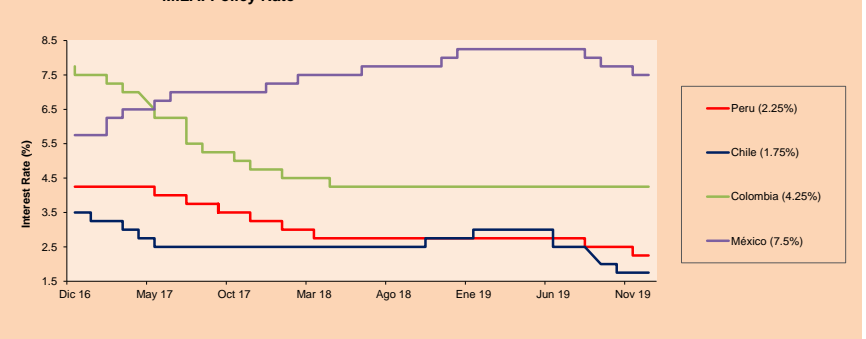
MILA: Stock Indices (6 months)

Base: 07/06/19=100
Source: Bloomberg

ETFs

		Curr.	Close	1D	5D	30 D	YTD	Exchange
▲ iShares MSCI All Peru Capped Index Fund	USD	34.21	0.18%	-0.35%	-4.65%	-1.84%		NYSE Arca
▲ iShares MSCI Mexico Capped	USD	31.36	3.46%	3.33%	-10.27%	-22.82%		Cboe BZX
▲ Global X MSCI Colombia	USD	12.795	2.61%	2.52%	-6.44%	16.83%		NYSE Arca
▲ iShares MSCI Mexico Capped	USD	43.07	0.58%	-1.60%	-4.35%	6.71%		NYSE Arca
▲ iShares MSCI Emerging Markets	USD	42.63	0.76%	-1.37%	-2.34%	9.97%		NYSE Arca
▲ Vanguard FTSE Emerging Markets	USD	42.27	0.88%	-0.70%	-1.26%	13.34%		NYSE Arca
▲ iShares Core MSCI Emerging Markets	USD	51.29	0.81%	-1.23%	-2.17%	9.87%		NYSE Arca
▲ iShares JP Morgan Emerging Markets Bonds	USD	57.3	0.79%	-0.88%	-3.13%	3.68%		Cboe BZX
▲ Morgan Stanley Emerging Markets Domestic	USD	6.87	1.03%	0.29%	-1.72%	21.00%		New York

MILA: Policy Rate



Source: Bloomberg

Capital Market Laboratory Codinador: Economist Bruno Bellido Anicama
Collaboration: Juan Carlos Figueroa, Alonso Butters, Jeanpiere León y Manuel Muñoz Najara
e-mail: pulsobursatil@ulima.edu.pe
facebook: www.facebook.com/pulsobursatil.ul
Phone number : 4376767 Annex: 35340

The content of this document is just for informational purposes. The information and opinions expressed should not be considered as recommendations for future decisions. Under any circumstances, the Capital Market Laboratory of University of Lima will be responsible for the use of the statements in this document.



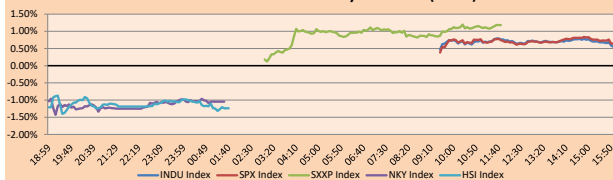
PULSO BURSÁTIL

WORLD

Main Indices	Close	1 D*	5 D*	1 M*	YTD*	Market Cap. (US\$ Mill.)
▲ Dow Jones (USA)	27,649.78	0.53%	-1.68%	0.68%	18.53%	7,798,243
▲ Standard & Poor's 500 (USA)	3,112.76	0.63%	-0.88%	1.12%	24.17%	26,652,964
▲ NASDAQ Composite (USA)	8,566.67	0.54%	-0.94%	1.58%	29.11%	13,149,164
▲ Stoxx EUROPE 600 (Europe)	433.19	1.18%	-1.62%	-0.05%	19.41%	9,803,338
▲ DAX (Germany)	13,140.57	1.16%	-1.10%	0.03%	24.45%	1,104,946
▲ FTSE 100 (United Kingdom)	7,188.50	0.42%	-3.25%	-2.46%	6.94%	1,463,897
▲ CAC 40 (France)	5,799.68	1.27%	-2.15%	-0.42%	22.60%	1,607,304
▲ IBEX 35 (Spain)	9,270.80	1.48%	-0.98%	-1.55%	8.56%	524,409
▼ MSCI AC Asia Pacific Index	164.30	-0.29%	-0.86%	-0.33%	11.99%	19,622,804
▼ HANG SENG (Hong Kong)	26,062.56	-1.25%	-3.31%	-5.85%	0.84%	2,384,583
▼ SHANGHAI SE Comp. (China)	2,878.12	-0.23%	-0.86%	-3.79%	15.41%	4,565,693
▼ NIKKEI 225 (Japan)	23,135.23	-1.05%	-1.29%	-0.50%	15.59%	3,514,012
▲ BOVESPA (Brazil)	110,300.90	1.23%	2.41%	1.40%	25.50%	784,626
▲ Merval (Argentina)	34,691.63	5.91%	2.25%	-6.94%	14.52%	18,868

*Legend: Variation 1D: 1 Day; 5D: 5 Days; 1M: 1 Month; YTD: Var. % 12/31/18 to date

Global Markets: Intraday Evolution (var %)

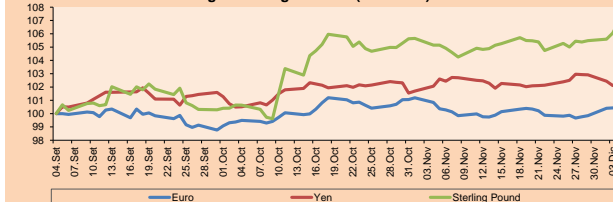


Source: Bloomberg

Currency	Price	1 D*	5 D*	1 M*	YTD*
▼ Euro	1.1078	-0.04%	0.72%	-0.45%	-3.39%
▲ Yen	108.8600	0.21%	-0.62%	0.26%	-0.76%
▲ Sterling Pound	1.3104	0.84%	1.42%	1.71%	2.74%
▲ Yuan	7.0499	-0.16%	0.30%	0.28%	2.49%
▼ Hong Kong Dollar	7.8289	-0.01%	0.02%	-0.11%	-0.04%
▼ Brazilian Real	4.2069	0.05%	-1.23%	4.72%	8.58%
▼ Argentine Peso	59.8828	-0.05%	0.15%	0.30%	58.98%

*Legend: Variation 1D: 1 Day; 5D: 5 Days; 1M: 1 Month; YTD: Var. % 12/31/18 to date

Foreign Exchange Indices (3 months)



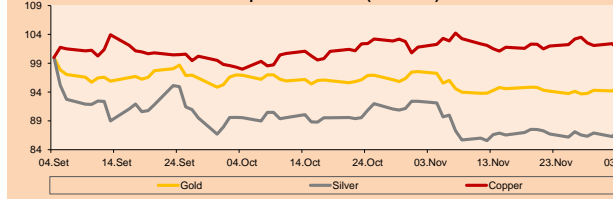
Base: 04/09/19=100

Source: Bloomberg

Commodities	Close	1 D*	5 D*	1 M*	YTD*
▼ Oro (US\$ Oz. T) (LME)	1,474.62	-0.20%	1.39%	-2.33%	14.98%
▼ Plata (US\$ Oz. T) (LME)	16.86	-1.85%	-0.62%	-6.64%	8.79%
▼ Cobres (US\$ TM) (LME)	5,789.75	0.00%	-2.29%	-1.09%	-2.68%
▼ Zinc (US\$ TM) (LME)	2,213.00	0.00%	-4.76%	-14.92%	-12.13%
▲ Petróleo WTI (US\$ Barril) (NYM)	58.35	4.01%	0.41%	3.09%	20.31%
▼ Estafío (US\$ TM) (LME)	16,771.00	0.00%	2.29%	2.27%	-14.08%
▼ Plomo (US\$ TM) (LME)	1,884.25	0.00%	-2.22%	-13.23%	-6.12%
▲ Auzúcar #11 (US\$ Libra) (NYB-ICE)	13.06	1.56%	2.11%	4.40%	-0.68%
▼ Cacao (US\$ TM) (NYB-ICE)	2,547.00	-0.70%	-1.93%	1.64%	3.03%
▼ Café Arábica (US\$ TM) (NYB-ICE)	121.25	-2.06%	2.36%	13.05%	2.62%

*Legend: Variación 1D: 1 Día; 5D: 5 Días; 1M: 1 Mes; YTD: Var. % 31/12/17 a la fecha

Principal Metals Index (3 months)



Base: 04/09/19=100

Source: Bloomberg

Equity

Alemania (Acciones del DAX Index)

Largest gains	Curr.	Price	▲ %	Exchange	Largest losses	Curr.	Price	▼ %	Exchange
DBK GY	EUR	6.471	2.21	Xetra	WDI GY	EUR	118	-0.25	Xetra
MTX GY	EUR	253	2.02	Xetra	MRK GY	EUR	103.35	-0.14	Xetra
LIN GY	EUR	184.9	1.93	Xetra	ADS GY	EUR	277.85	-0.09	Xetra
FRE GY	EUR	50.2	1.78	Xetra	RWE GY	EUR	25.76	0.23	Xetra

Europe (Stocks from STOXX EUROPE 600)

Largest gains	Curr.	Price	▲ %	Exchange	Largest losses	Curr.	Price	▼ %	Exchange
CINE LN	GBp	209.6	5.89	Londres	MONY LN	GBp	323.3	-2.91	Londres
ABIG ID	EUR	3.1	5.80	EN Dublin	MNG LN	GBp	224.8	-2.68	Londres
TRELB SS	SEK	163.8	5.75	Stockholm	KSP ID	EUR	40.02	-2.25	EN Dublin
INVP LN	GBp	439	5.15	Londres	UTG LN	GBp	1194	-2.21	Londres

Global Overview:

United States:

The US market closed the day with positive results due to the meeting between Trump and German Chancellor Angela Merkel at the NATO meeting to celebrate 70 years of military alliance. Likewise, investors analyze favorable scenarios in the long term with the latest developments. The main US indexes had the following Dow Jones results up + 0.53%, S&P up + 0.69% and Nasdaq up + 0.54%. In other news, Expedia's CEO and CFO resigned after a strategy confrontation with the board of directors. Expedia, an airline-related company, had a serious problem with the board of directors with the perspective and vision of growth (acceleration) for subsequent years. The banking regulator rebuked the human resources department of Wells Fargo-WSJ. A major banking regulator in the United States accused the human resources department of Wells Fargo & Co for determining the bank's backlog of employee complaints and compensation structures. The companies with the best returns of the day were L Brands Inc (+ 7.85%) and Capri Holding Ltd (+ 6.86%) by the US S&P 500 index.

Europe:

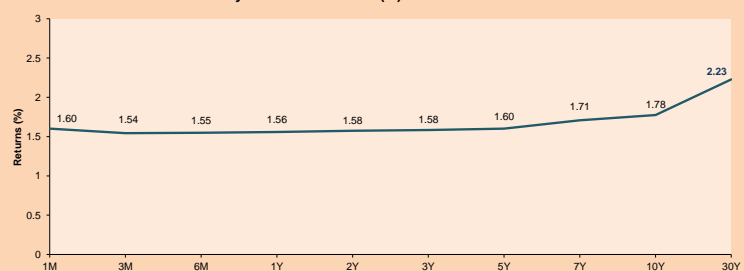
European markets closed today's earnings session, after investors regained their hopes in the possible first-phase trade agreement between the US and China. The market is in tune with the latest developments in trade negotiations. Thus, although in the last session President Donald Trump doubts about how to reach an agreement with China, today the perspectives are different. According to Bloomberg, US and China are very close to finish an agreement on the amount of tariffs that would be reversed in a so-called "phase one" agreement. After this news was released, Europe's basic resource actions increased by 1.7%, being the most positive sector. Regarding official economic data, the commercial activity of the eurozone was established stably in November. According to IHS Markit, the PMI had a value of 50.6, leveled above 50, midpoint between growth or contraction. On the other hand, many officials and leaders gathered in London for the 70th anniversary of NATO. But, the event ended in drama after D. Trump canceled a conference and called Trudeau "two faces." Thus, the STOXX 600 + 1.18%, CAC + 1.27%, DAX + 1.16%, AEX + 1.38% and FTSE MIB + 1.31% ended up.

Asia:

Asian markets had mixed variations in today's session. The main indices of the region as: Nikkei 225 -1.05%, Hang Seng -1.25%, S&P / ASX 200 -1.58%, Nifty 50 + 0.41% and IDX Composite -0.34%. On the other hand, the United States and China are close to reaching an agreement on the tariffs that will be suspended in the "phase one" of an agreement to stop the trade war. US President Donald Trump said the possible signing of a trade agreement with China may have to wait until after the November 2020 presidential election, reducing hopes for a speedy resolution of a dispute that is affecting the global economy. People close to both nations said that the comments of the president of the United States that does not give the necessary importance to this agreement "should not be understood as conversations stalled, as he spoke unexpectedly." Some sources pointed out that US negotiators expect a trade agreement with China to be reached in phase one before December 15, as US tariffs will increase by this date.

ETFs	Curr.	Close	1D	5D	30 D	YTD	Exchange
SPDR S&P 500 ETF TRUST	USD	311.46	0.62%	-1.27%	1.33%	26.36%	NYSE Arca
ISHARES MSCI EMERGING MARKET	USD	42.63	0.76%	-1.37%	-2.34%	9.97%	NYSE Arca
ISHARES IBOXX HIGH YLD CORP	USD	86.68	0.30%	-0.13%	0.02%	12.05%	NYSE Arca
FINANCIAL SELECT SECTOR SPDR	USD	29.82	0.95%	-1.26%	1.53%	27.12%	NYSE Arca
VANECK GOLD MINERS	USD	27.48	-1.04%	3.08%	-0.15%	30.30%	NYSE Arca
ISHARES RUSSELL 2000 ETF	USD	160.78	0.69%	-1.28%	1.15%	21.24%	NYSE Arca
SPDR GOLD SHARES	USD	138.92	-0.14%	1.39%	-2.27%	14.57%	NYSE Arca
ISHARES 20+ YEAR TREASURY BO	USD	139.80	-1.00%	-0.49%	0.96%	17.57%	NASDAQ GM
INVECO QQQ TRUST SERIES 1	USD	202.43	0.51%	-1.75%	1.16%	32.02%	NASDAQ GM
ISHARES NASDAQ BIOTECHNOLOGY	USD	120.40	1.05%	0.85%	9.95%	25.04%	NASDAQ GM
ENERGY SELECT SECTOR SPDR	USD	58.88	1.50%	-1.03%	-3.81%	5.37%	NYSE Arca
PROSHARES ULTRA VIX ST FUTUR	USD	15.24	-6.83%	12.52%	-11.11%	-80.13%	NYSE Arca
UNITED STATES OIL FUND LP	USD	12.19	3.66%	0.41%	3.22%	26.19%	NYSE Arca
ISHARES MSCI BRAZIL ETF	USD	43.61	1.14%	3.59%	-3.13%	15.62%	NYSE Arca
SPDR S&P OIL & GAS EXP & PR	USD	20.66	3.09%	-0.91%	-9.82%	-21.39%	NYSE Arca
UTILITIES SELECT SECTOR SPDR	USD	63.29	0.76%	0.29%	0.03%	22.39%	NYSE Arca
ISHARES US REAL ESTATE ETF	USD	92.74	0.39%	-0.77%	-0.77%	26.49%	NYSE Arca
SPDR S&P BIOTECH ETF	USD	94.84	1.24%	1.52%	14.07%	32.19%	NYSE Arca
ISHARES IBOXX INVESTMENT GRA	USD	127.88	-0.13%	0.00%	1.05%	16.99%	NYSE Arca
ISHARES JP MORGAN USD EMERGI	USD	111.74	0.23%	-0.22%	-1.07%	12.20%	NASDAQ GM
REAL ESTATE SELECT SECT SPDR	USD	38.45	0.52%	-0.90%	-0.88%	26.57%	NYSE Arca
ISHARES CHINA LARGE-CAP ETF	USD	40.88	0.42%	-2.83%	-3.83%	5.67%	NYSE Arca
CONSUMER STAPLES SPDR	USD	62.45	0.66%	0.69%	3.12%	25.33%	NYSE Arca
VANECK JR GOLD MINERS	USD	39.21	-0.78%	5.40%	1.11%	29.75%	NYSE Arca
SPDR BBG BARC HIGH YIELD BND	USD	108.01	0.32%	-0.05%	0.08%	12.78%	NYSE Arca
VANGUARD REAL ESTATE ETF	USD	92.63	0.41%	-0.93%	-1.06%	27.32%	NYSE Arca
GRAYSCALE BITCOIN TRUST BTC	USD	8.73	-2.89%	-8.87%	-26.14%	120.18%	OTC US

USA Treasury Bonds Yield Curve (%)



Source: Bloomberg

Capital Market Laboratory Coordinator: Economist Bruno Bellido Anicama
 Collaboration: Juan Carlos Figueroa, Alonso Butters, Jeanpiere LeDy y Manuel Muñoz Najer
 e-mail: pulsobursatil@ulima.edu.pe
 facebook: www.facebook.com/pulsobursatil.ul
 Phone number: 4376767 Annex: 35340

PULSO BURSÁTIL

LIMA

Stocks

Ticker	Currency	Price	1D*	5D*	30D*	YTD*	Frequency	Volume (US\$)	Beta	Dividend Yield (%)	Price Earning	Market Cap. (M US\$)	Economic Sector*	Index Weight
▼ ALICORC1 PE**	S/.	8.50	-1.73%	-3.41%	-7.61%	-12.67%	100.00%	4,597,728	0.63	2.82	16.34	2,149.03	Industrial	3.53%
▼ ATACOB1 PE**	S/.	0.12	0.00%	-6.15%	-34.05%	-62.11%	50.00%	2,071	#N/A N/A	0.00	3.28	34.10	Mining	1.02%
▼ BACKUS1 PE**	S/.	26.90	-0.37%	1.89%	14.31%	39.35%	75.00%	132,713	0.37	5.53	7.93	10,172.21	Industrial	0.82%
▲ BAP PE**	US\$	207.78	0.34%	-1.06%	-2.94%	-2.60%	100.00%	44,461	1.31	4.04	-	16,572.84	Diverse	5.82%
▼ BVN PE**	US\$	15.12	0.53%	0.80%	-3.70%	-5.57%	85.00%	126,615	1.42	0.55	-	4,167.59	Mining	5.88%
▼ CASAGRC1 PE**	S/.	2.52	-3.08%	0.40%	-16.00%	-37.69%	100.00%	15,732	0.69	0.50	14.79	62.80	Agricultural	1.31%
▼ BBVAC1 PE**	S/.	3.36	-0.30%	0.30%	-4.00%	-3.17%	100.00%	59,167	0.49	4.11	12.33	5,850.21	Finance	2.85%
▼ CORARE1 PE**	S/.	0.84	-1.18%	-4.55%	5.66%	30.43%	100.00%	20,333	0.89	7.83	4.08	342.52	Industrial	1.72%
▼ CPACASC1 PE**	S/.	6.35	-0.78%	-0.78%	-6.07%	-1.55%	100.00%	75,488	0.65	5.94	35.28	801.63	Industrial	2.38%
▼ CVERDEC1 PE**	US\$	17.60	0.00%	-2.22%	-2.17%	-13.87%	90.00%	73,200	0.88	2.43	-	6,160.99	Mining	5.25%
▼ ENGEPEC1 PE**	S/.	2.34	-0.43%	-0.43%	-3.19%	26.90%	70.00%	8,100	0.79	3.81	12.72	1,965.23	Public Services	1.44%
▼ ENDISPC1**	S/.	6.88	0.00%	-1.01%	-3.51%	34.45%	75.00%	32,386	0.58	3.35	10.78	1,299.76	Public Services	0.98%
▼ FERREYC1 PE**	S/.	2.10	-0.94%	-1.87%	-2.69%	-8.74%	100.00%	248,178	0.97	4.88	7.89	606.18	Diverse	4.90%
▼ GRAMONC1 PE**	S/.	1.45	-1.36%	12.40%	-8.23%	-27.14%	100.00%	58,039	0.90	0.00	-	374.04	Diverse	4.05%
▼ IFS PE**	US\$	39.54	-2.25%	1.38%	-4.72%	-2.23%	100.00%	256,005	0.99	4.43	11.63	4,564.80	Diverse	7.22%
▼ INRETC1 PE**	US\$	34.91	0.00%	-3.03%	0.32%	24.46%	100.00%	109,164	0.67	0.98	28.77	3,589.00	Diverse	5.28%
▼ LUSURC1 PE**	S/.	23.75	-1.04%	-1.04%	1.11%	126.99%	100.00%	308,805	0.62	3.54	19.01	3,421.52	Public Services	1.81%
▼ MINSUR1 PE**	S/.	1.41	-0.70%	-4.73%	-5.37%	6.82%	80.00%	45,282	1.27	5.37	6.09	1,202.64	Mining	3.09%
▼ PML PE**	US\$	0.08	0.00%	0.00%	-6.25%	-57.14%	40.00%	3,789	1.34	0.00	-	19.79	Mining	2.12%
▼ RELAPAC1 PE**	S/.	0.09	-1.06%	-2.11%	-7.00%	-26.19%	100.00%	14,798	0.85	0.00	-	228.89	Industrial	2.12%
▲ SCCO PE**	US\$	38.00	2.76%	-1.30%	1.76%	31.79%	90.00%	20,480	1.30	5.38	20.00	29,376.24	Mining	2.14%
▲ SIDERC1 PE**	S/.	0.67	-4.29%	-4.29%	-2.90%	38.72%	90.00%	20,120	1.43	15.24	7.61	243.40	Industrial	1.43%
▲ TV PE**	US\$	0.15	8.15%	11.45%	-2.67%	-50.84%	95.00%	70,780	1.69	0.00	-	118.86	Mining	2.93%
▼ UNACMC1 PE**	S/.	1.93	-3.50%	-3.50%	-8.79%	-24.11%	90.00%	40,940	0.60	2.69	10.57	1,038.13	Industrial	3.00%
▲ VOLCABC1 PE**	S/.	0.34	7.03%	-0.59%	-15.19%	-52.82%	100.00%	122,019	1.48	0.00	-	1,928.66	Mining	5.90%
▼ NEXAPEC1 PE**	S/.	3.15	0.00%	-2.17%	-10.00%	-14.19%	60.00%	9,343	1.08	16.47	30.07	1,232.15	Mining	1.56%

Quantity of shares: 26

Source: Bloomberg, Económica

* Bloomberg Industry Classification System

** PER is used in the stock market and original currency of the instrument

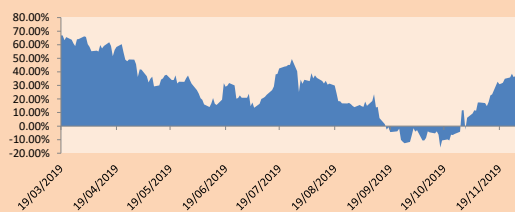
*Legend: Variation 1D: 1 Day; 5D: 5 Days; 1M: 1 Month; YTD: Var.% 12/31/18 to date

Sectorial Indices

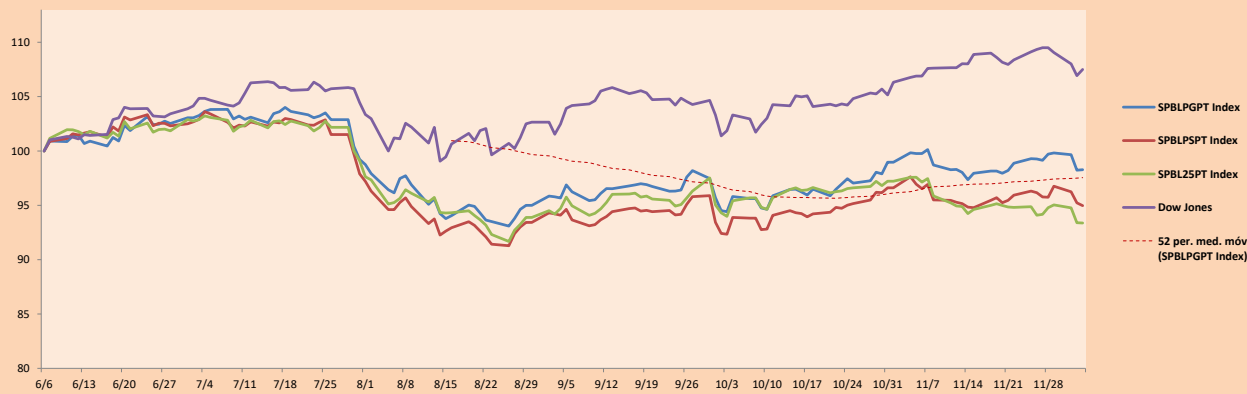
	Close	1D*	5D*	30D*	YTD*	Beta
▲ Mining Index	288.35	1.35%	-0.55%	-0.97%	1.24%	1.37
▼ Consumer Index	1,087.68	-0.90%	-2.41%	-0.56%	8.16%	0.38
▼ Industrial Index	198.57	-1.61%	-0.38%	-5.10%	-12.49%	0.62
▼ Banking and Financial Index	1,173.89	-0.16%	-0.97%	-1.83%	-2.17%	1.26
▼ Construction Index	212.03	-1.92%	0.33%	-6.15%	-13.77%	0.46
▼ Services Index	626.74	-0.44%	-0.98%	0.70%	57.63%	0.20
▼ Juniors Index	15.70	-0.32%	-0.13%	-8.29%	-46.67%	0.21
▼ Electric Index	611.85	-0.44%	-0.98%	0.70%	57.62%	0.20

*Legend: Variation 1D: 1 Day; 5D: 5 Days; 1M: 1 Month; YTD: Var.% 12/31/18 to date

Correlation Graph of Returns of Mining Index against Metallic Index of London (3 months)



Indices (6 months)



Source: Bloomberg

Capital Market Laboratory Coordinator: Economist Bruno Bellido Anicama
 Collaboration: Juan Carlos Figueroa, Alonso Butter, Jeanpiere León y Manuel Muñoz Najar
 e-mail: pulsobursatil@ulima.edu.pe
 facebook: www.facebook.com/pulsobursatil.ul
 Phone number : 4376767 Annex: 35340

The content of this document is just for informational purposes. The information and opinions expressed should not be consider as recommendations for future decisions. Under any circumstances, the Capital Market Laboratory of University of Lima will be responsible for the use of the statements in this document.

PULSO BURSÁTIL

SOVEREIGN RATING

RISK RATINGS

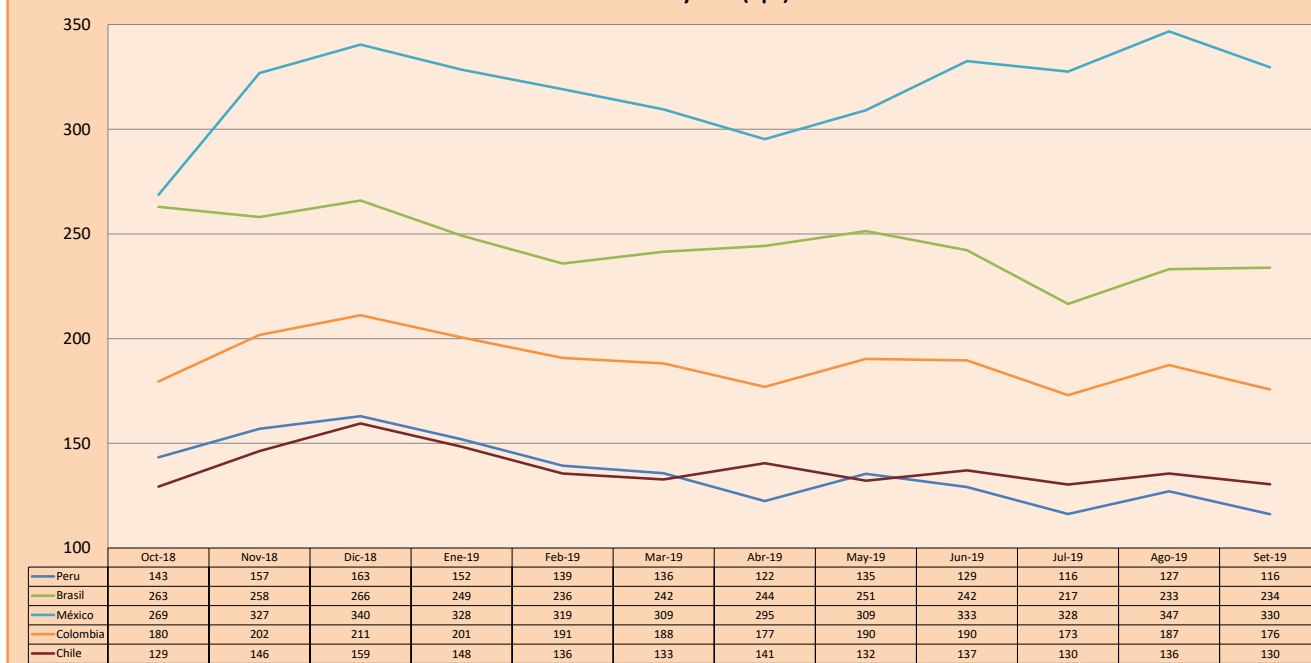
Moody's	S&P	Fitch	
Aaa	AAA	AAA	Prime
Aa1	AA+	AA+	High credit quality
Aa2	AA	AA	
Aa3	AA-	AA-	
A1	A+	A+	Medium-high grade, with low credit risk
A2	A	A	
A3	A-	A-	
Baa1	BBB+	BBB+	Moderate Credit Risk
Baa2	BBB	BBB	
Baa3	BBB-	BBB-	
Ba1	BB+	BB+	It has speculative elements and it is subject to substantial credit risk
Ba2	BB	BB	
Ba3	BB-	BB-	
B1	B+	B+	It is considered speculative and it has high credit risk
B2	B	B	
B3	B-	B-	
Caa1	CCC+		Bad credit conditions and it is subject to high credit risk
Caa2	CCC		
Caa3	CCC-	CCC	
Ca	C		Very close to default or in default
		DDD	
C	D	DD	

Source: Bloomberg

Latin America Credit Rating			
Clasificadora de riesgo			
Country	Moody's	Fitch	S&P
Peru	A3	BBB+	BBB+
Mexico	A3	BBB	BBB+
Venezuela	C	WD	SD
Brazil	Ba2	BB-	BB-
Colombia	Baa2	BBB	BBB-
Chile	A1	A	A+
Argentina	Caa2 *	CC	CCC-
Panama	Baa1	BBB	BBB+

Source: Bloomberg

LATAM Country Risk (bps)



Source: BCRP

Capital Market Laboratory Coordinator: Economist Bruno Bellido Anicama
 Support: Juan Carlos Figueroa, Alonso Butters, Jeanpierre León y Manuel Muñoz Najara
 e-mail: pulsobursatil@ulima.edu.pe
 facebook: www.facebook.com/pulsobursatil.ul
 Phone number : 4376767 Annex: 35340

The content of this document is just for informational purposes. The information and opinions expressed should not be consider as recommendations for future decisions. Under any circumstances, the Capital Market Laboratory of University of Lima will be responsible for the use of the statements in this document.