

PULSO BURSÁTIL

FACULTAD DE CIENCIAS EMPRESARIALES Y ECONÓMICAS
CARRERA DE ECONOMÍA
LABORATORIO DE MERCADO DE CAPITALES

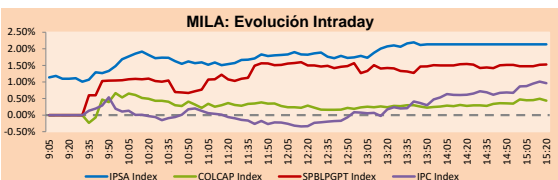


MILA

Lima, november 13, 2020

Main Indexes	Close	1 D	5 D	1 M	YTD	Cap. Burs. (US\$ bill)
▲ IPSA (Chile)	4,005.35	2.27%	5.06%	10.02%	-14.23%	102.95
▲ IGPA (Chile)	19,994.46	2.01%	4.65%	8.33%	-14.53%	126.36
▲ COLSC (Colombia)	908.93	0.09%	1.44%	3.55%	-7.07%	4.95
▲ COLCAP (Colombia)	1,209.87	0.22%	3.20%	3.25%	-27.22%	70.94
▲ S&P/BVL (Perú)*	18,048.41	1.37%	0.30%	2.16%	-12.07%	89.93
▲ S&P/BVL SEL (Perú)	479.74	1.78%	1.10%	2.42%	-9.72%	73.62
▲ S&P/BVL LIMA 25	22,363.77	1.02%	1.29%	2.24%	-13.16%	89.13
▲ IPC (México)	40,791.81	1.08%	2.42%	7.70%	-6.31%	256.32
▲ S&P MILA 40	454.64	2.20%	-0.84%	10.40%	-24.61%	206.35

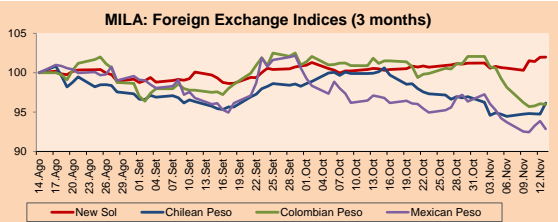
*Legend: Variation 1D: 1 day; 5D: 5 days; 1M: 1 Month; YTD: Var% 12/31/19 to date



Source: Bloomberg

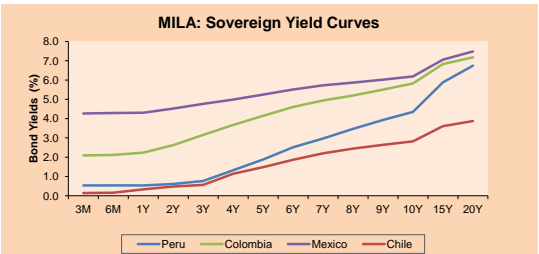
Currency	Price	1D*	5D*	30 D*	YTD*
▲ New Sol (PEN)	3,643.00	0.02%	1.41%	1.47%	9.98%
▲ Chilean Peso (CLP)	767.25	1.47%	1.78%	-3.98%	2.06%
▼ Colombian Peso (COP)	3,639.63	-0.10%	-2.23%	-5.15%	11.06%
▼ Mexican Peso (MXN)	20.41	-1.08%	-0.94%	-4.24%	7.83%

*Legend: Variation 1D: 1 day; 5D: 5 days; 1M: 1 Month; YTD: Var% 12/31/19 to date



Base: 14/08/20=100
Source: Bloomberg

Fixed Income	Currency	Price	Bid Yield (%)	Ask Yield (%)	Duration
PERU 7.35 07/21/25	USD	128.085	1.21	1.11	4.04
PERU 4.125 08/25/27	USD	117.086	1.49	1.44	5.99
PERU 8.75 11/21/33	USD	169.406	2.51	2.44	8.99
PERU 6.55 03/14/37	USD	152.307	2.63	2.56	10.95
PERU 5.625 11/18/2050	USD	159.489	2.73	2.69	17.77
CHILE 2.25 10/30/22	USD	103.315	0.64	0.44	1.91
CHILE 3.125 01/21/26	USD	110.703	1.04	0.96	4.79
CHILE 3.625 10/30/42	USD	116.069	2.68	2.63	16.03
COLOM 11.85 03/09/28	USD	165.373	2.25	2.04	5.51
COLOM 10.375 01/28/33	USD	160.573	4.12	3.95	8.03
COLOM 7.375 09/19/37	USD	146.938	3.67	3.58	11.04
COLOM 6.125 01/18/41	USD	135.275	3.68	3.61	12.87
MEX 4 10/02/23	USD	135.275	3.676	3.605	12.87
MEX5.55 01/45	USD	129.35	3.72	3.68	14.70



Source: Bloomberg

Equity

Largest gains	Exchange	Currency	Price	▲ %
BECLE SAB DE CV	Mexico	MXN	49.14	5.54
CREDECORP LTD	Peru	USD	125.00	4.73
CENCOSUD SHOPPIN	Chile	CLP	1223.00	4.09
ENEL AMERICAS SA	Chile	CLP	115.40	3.95
SOQUIMICH-B	Chile	CLP	33222.00	3.82

Per Turnover	Exchange	Amount (US\$)
GRUPO F BANORT-O	Mexico	54,679,162
WALMART DE MEXIC	Mexico	48,436,193
FOMENTO ECON-UBD	Mexico	24,399,657
GRUPO MEXICO-B	Mexico	23,179,204
SOQUIMICH-B	Chile	23,068,179

Largest losses	Exchange	Currency	Price	▼ %
ITAU CORPBANCA	Chile	CLP	2.04	-5.51
FERREYCORP SAA	Peru	PEN	1.68	-2.89
CORFICOLOMBIANA	Colombia	COP	27270	-2.54
CMPC	Chile	CLP	1650	-2.36
ISA SA	Colombia	COP	22520	-1.83

Per Volume	Exchange	Volume
ITAU CORPBANCA	Chile	763,068,412
BANCO SANTANDER	Chile	287,089,472
ENEL AMERICAS SA	Chile	70,125,673
ENEL CHILE SA	Chile	49,349,002
BANCO DE CHILE	Chile	47,775,705

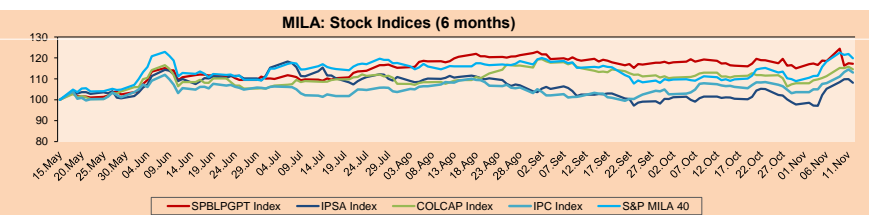
MILA

Peru: The General Index of the BVL ended today's session with a positive result of +1.37%. The index maintains an annual accumulated negative trend of -12.07% in local currency, while the adjusted return in dollars amounts to -20.05%. Then, the S&P / BVL Peru SEL varied by +1.78% while the S&P / BVL LIMA 25 by +1.02%. The PEN spot reached 5 / 3.6430. Headline: Peru's economy would have fallen 8.8% in September, according to a Reuters poll.

Chile: The IPSA index ended the day with a positive return of +2.27%. The sectors that benefited the most during the session were Technology (+3.09%) and Consumer Cyclical (+2.88%). The stocks with the best performance were Cencosud Shopping SA (+4.09%) and Enel Americas SA (+3.95%). Headline: Chilean Cencosud registers losses of US \$ 10M in the third quarter, affected by the coronavirus.

Colombia: The COLCAP index ended the day with a positive return of +0.22%. The sectors that benefited the most during the session were Energy (+1.27%) and Finance (+0.44%). The stocks with the best performance were Grupo de Inversiones Suramericana SA (+1.55%) and BanColombia SA (+1.50%). Owner: Colombian mine Cerrejón requests an arbitration tribunal to resolve labor dispute.

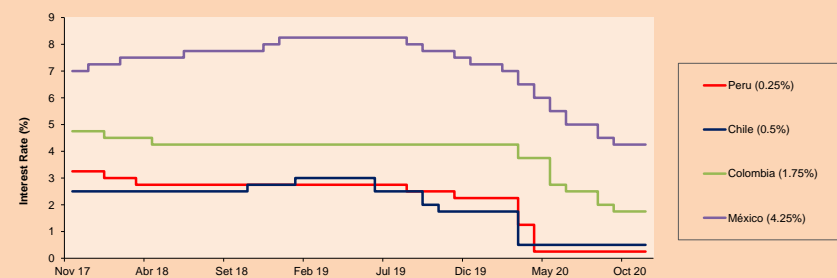
Mexico: The IPC index closed the day with a positive return of +1.13%. The sectors that benefited the most during the session were Consumer Cyclical (+2.07%) and Profits (+2.02%). The best performing stocks were Bece SAB de CV (+4.90%) and Industrias Penoles SAB de CV (+3.09%). Owner: Mexico, willing to grant LNG export permission to Sempra but with the condition of offsetting an excess gas supply.



Base: 18/05/20=100
Source: Bloomberg

ETFs	Curr.	Close	1D	5D	30 D	YTD	Exchange
▲ iShares MSCI All Peru Caped Index Fund	USD	30.5879	2.20%	-0.84%	2.26%	-17.44%	NYSE Arca
▲ iShares MSCI All Chile Caped Index Fund	USD	26.88	2.08%	3.21%	14.23%	-19.05%	Cboe BZX
▲ Global X MSCI Colombia	USD	9.1616	0.90%	6.47%	10.38%	-34.09%	NYSE Arca
▲ iShares MSCI Mexico Capped	USD	39.17	2.57%	6.56%	11.63%	-13.01%	NYSE Arca
▲ iShares FTSE Emerging Markets	USD	48.33	1.41%	0.83%	5.69%	7.71%	NYSE Arca
▲ Vanguard FTSE Emerging Markets	USD	47.13	1.27%	0.55%	4.92%	5.98%	NYSE Arca
▲ iShares Core MSCI Emerging Markets	USD	57.85	1.38%	0.91%	5.82%	7.61%	NYSE Arca
▲ iShares JP Morgan Emerging Markets Bonds	USD	59.01	0.77%	1.81%	4.57%	0.60%	Cboe BZX
▲ Morgan Stanley Emerging Markets Domestic	USD	5.94	0.51%	2.41%	4.58%	-15.02%	New York

MILA: Policy Rate



Source: Bloomberg

Capital Market Laboratory Coordinator: Economist Bruno Bellido
Collaboration: Piero Best, Luis Davila, Laura Delgado and Alonso Hernández
email: pulsobursatil@ulima.edu.pe
facebook: www.facebook.com/pulsobursatil.ul

The content of this document is just for informational purposes. The information and opinions expressed should not be considered as recommendations for future decisions. Under any circumstances, the Capital Market Laboratory of University of Lima will be responsible for the use of the statements in this document.

WORLD

Main Indices	Close	1 D*	5 D*	1 M*	YTD*	Market Cap. (US\$ Mill.)
▲ Dow Jones (USA)	29,479.81	1.37%	-4.08%	3.05%	3.30%	9,144,848
▲ Standard & Poor's 500 (EEUU)	3,585.15	1.36%	2.16%	2.91%	10.97%	31,020,376
▲ NASDAQ Composite (USA)	11,829.29	1.02%	-0.55%	1.35%	31.84%	18,988,142
▲ Stoxx EUROPE 600 (Europe)	385.18	0.01%	5.13%	4.82%	-7.37%	8,901,193
▲ DAX (Germany)	13,076.72	0.18%	4.78%	1.30%	-1.30%	1,010,571
▼ FTSE 100 (United Kingdom)	6,318.39	-0.30%	6.88%	6.70%	-16.20%	1,317,587
▲ CAC 40 (France)	5,380.16	0.33%	8.45%	9.00%	-10.00%	1,458,695
▲ IBEX 35 (Spain)	7,783.70	0.75%	13.29%	13.64%	-18.49%	431,872
▲ MSCI AC Asia Pacific Index	185.01	0.03%	1.35%	5.95%	8.41%	23,548,666
▼ HANG SENG (Hong Kong)	26,156.86	-0.05%	1.73%	7.26%	-7.21%	3,709,172
▼ SHANGHAI SEC Comp. (China)	3,310.10	-0.88%	-0.06%	-0.79%	8.52%	6,062,363
▼ NIKKEI 225 (Japan)	25,385.87	-0.53%	4.36%	8.44%	7.31%	3,648,741
▼ S&P / ASX 200 (Australia)	6,405.22	-0.20%	3.47%	3.70%	-4.17%	1,467,069
▲ KOSPI (South Korea)	2,493.87	1.13%	5.87%	6.51%	13.48%	1,472,867

*Legend: Variation 1D: 1 Day; 5D: 5 Days; 1M: 1 Month; YTD: Var. % 12/31/19 to date

Equity

Germany (Stocks from DAX Index)

Largest gains	Curr.	Price	▲ %	Exchange	Largest losses	Curr.	Price	▼ %	Exchange
DB1 GY	EUR	136.9	2.66	Xetra	ADS GY	EUR	270	-1.46	Xetra
RWE GY	EUR	34.97	1.92	Xetra	DWNI GY	EUR	42.49	-0.93	Xetra
ALV GY	EUR	190.94	1.48	Xetra	DTE GY	EUR	14.915	-0.83	Xetra
MTX GY	EUR	193.45	1.47	Xetra	CON GY	EUR	106.7	-0.61	Xetra

Europe (Stocks from STOXX EUROPE 600)

Largest gains	Curr.	Price	▲ %	Exchange	Largest losses	Curr.	Price	▼ %	Exchange
NTGY SQ	EUR	19,685	7.77	Soc.Bol SIBE	ATL IM	EUR	14,175	-4.87	Borsa Italiana
RNO FP	EUR	29.02	5.74	EN Paris	LPP PW	PLN	6915	-4.16	Warsaw
SINCH SS	SEK	991	4.57	Stockholm	SALM NO	NOK	520	-3.35	Oslo
MNG LN	GBP	183.35	4.77	Londres	HJMA LN	GBP	2432	-3.91	Londres

Global Overview:

United States:

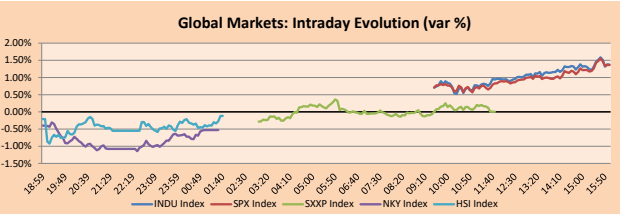
US markets closed today's session with positive returns on encouraging earnings reports that helped fuel optimism about the economy even as investors monitored an increase in virus cases and restrictions across the country. After a volatile trading week, Cisco Systems Inc + 7.06% provided the biggest boost to the S&P 500 after its quarterly report showed an increase in demand driven by work from home. Thus, the S&P 500 closed at a record high with 3,585.15 points and managed to advance + 2.2% in the week. In addition, about 90% of the companies that make up the index have already reported results for the third quarter so far and what is rescued is that profits fell by -7.8% compared to last year, a significant improvement with respect to a forecast drop of -21.4%. The outperformance of cyclical sectors most sensitive to the economy, such as energy, real estate and industrials, over growth sectors such as technology was also highlighted. Regarding economic data, it was evident that consumers were becoming more pessimistic, while tepid inflation reflected weak labor markets and slow demand. Finally, the main indices S&P 500 + 1.36%, DJIA + 1.37% and NASDAQ + 1.02% closed higher.

Europe:

European markets closed today's session with mixed results as coronavirus infections rise in the region. The shares closed almost changes, as the increase in Covid-19 cases aggravated fears about the damage to the bloc's economy in the coming winter months, even though the benchmark, the pan-European index, registered its second-week consecutive earnings. Regarding the restrictions, the German Health Minister said it was too early to decide whether the restrictions imposed last week should be extended beyond November, while French Prime Minister Jean Castex said there would be no flexibility for at least two weeks. This would impact on economic activity, particularly in parts of the service and tourism sectors. In corporate stocks, the French electricity group Electricité de France + 0.39% closed with gains in its share price, as it showed signs of improvement in the third quarter, while the German real estate group Deutsche Wohnen -0.93% fell after its third-quarter results update. In this way, the main indexes Stoxx 600 + 0.01%, FTSE 100 -0.36%, CAC 40 + 0.33% and DAX + 0.18% closed with mixed results.

Asia:

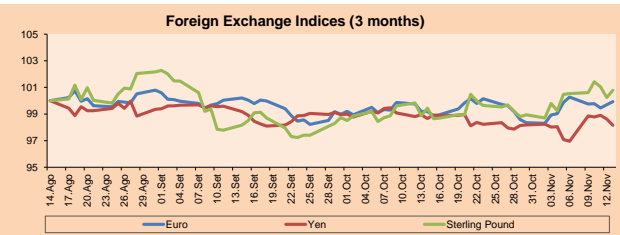
Asian markets ended negotiations with mixed returns, as sentiment of optimism about the vaccine continued to fade as cases escalated in the US and Europe. Attention in the markets was probably focused on the numbers of those infected by COVID-19 in the United States after new daily cases continue to rise in the country and reach new highs. In the commodity markets, during Asian trading hours, oil prices fell: Brent crude futures fell -1.22%, to US \$ 43 per barrel. Similarly, Texas crude futures fell -1.58%, to US \$ 40.47 per barrel. In the currency market, the Japanese yen weakened, trading at 105.05 per US \$ after being at levels below 104.3 per US \$. In individual stocks, in Hong Kong, shares of Chinese giant Tencent defied the trend and gained + 4.33% as a result of its quarterly earnings reports, which indicated an increase in earnings of more than 80% compared to the previous year. Thus, the KOSPI Composite + 0.74% and Taiwan + 0.39% finished higher; On the other hand, the Nikkei -0.53%, Hang Seng -0.05%, Shanghai Composite -0.86% and Shenzhen -0.27% closed with losses, among other indices.



Source: Bloomberg

Currency	Price	1 D*	5 D*	1 M*	YTD*
▲ Euro	1.1834	0.24%	-0.34%	0.75%	5.54%
▲ Yen	104.6300	-0.48%	1.24%	-0.51%	-3.66%
▲ Sterling Pound	1.3189	0.54%	0.25%	1.36%	-0.51%
▲ Yuan	6.6065	-0.10%	-0.09%	-1.62%	-5.12%
▲ Hong Kong Dollar	7.7533	-0.01%	0.00%	0.04%	-0.49%
▲ Brazilian Real	5.4635	0.11%	1.60%	-2.31%	35.56%
▲ Argentine Peso	79.7554	0.24%	0.83%	2.96%	33.21%

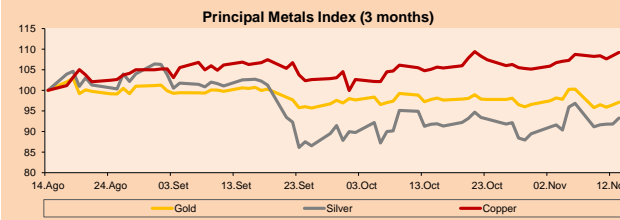
*Legend: Variation 1D: 1 Day; 5D: 5 Days; 1M: 1 Month; YTD: Var. % 12/31/19 to date



Base: 14/08/20=100
Source: Bloomberg

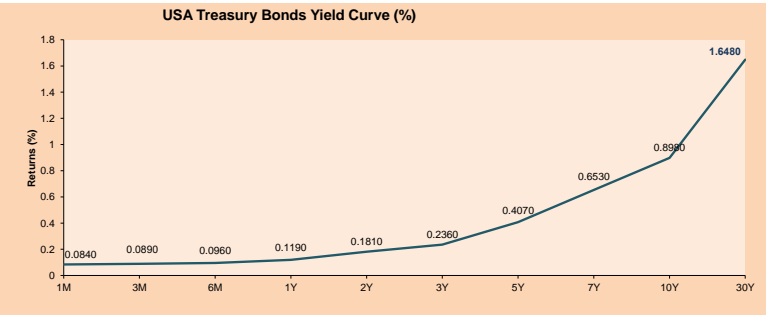
Commodities	Close	1 D*	5 D*	1 M*	YTD*
▲ Oro (US\$ Oz. T) (LME)	1,889.20	0.66%	-3.18%	-0.65%	24.51%
▲ Plata (US\$ Oz. T) (LME)	24.67	1.60%	-3.68%	1.67%	38.19%
▲ Cobres (US\$ TM) (LME)	6,966.30	0.73%	0.45%	3.94%	13.29%
▲ Zinc (US\$ TM) (LME)	2,615.10	0.19%	-0.34%	8.93%	14.72%
▼ Petróleo WTI (US\$ Barril) (NYM)	40.13	-2.41%	8.05%	-2.93%	-28.90%
▼ Estano (US\$ TM) (LME)	18,423.00	0.53%	0.40%	0.77%	7.25%
▼ Plomo (US\$ TM) (LME)	1,874.85	-0.37%	2.72%	5.42%	-2.02%
▲ Acaúcar #11 (US\$ Libra) (NYB-ICE)	14.96	0.27%	0.34%	5.35%	4.03%
▲ Cacao (US\$ TM) (NYB-ICE)	2,365.00	0.38%	1.15%	-0.76%	-2.75%
▼ Café Arabica (US\$ TM) (NYB-ICE)	112.20	-0.66%	2.51%	0.00%	-19.89%

*Lenda: Variación 1D: 1 Día; 5D: 5 Días; 1M: 1 Mes; YTD: Var. % 31/12/19 a la fecha



Base: 14/08/20=100
Source: Bloomberg

ETFs	Curr.	Close	1D	5D	30 D	YTD	Exchange
SPDR S&P 500 ETF TRUST	USD	358.10	1.38%	2.27%	2.92%	11.26%	NYSE Arca
ISHARES MSCI EMERGING MARKET	USD	48.33	1.41%	0.83%	5.69%	7.71%	NYSE Arca
ISHARES IBOXX HIGH YLD CORP	USD	85.44	0.34%	0.25%	0.77%	-2.84%	NYSE Arca
FINANCIAL SELECT SECTOR SPDR	USD	27.03	1.65%	8.29%	9.08%	-12.18%	NYSE Arca
VANECK GOLD MINERS	USD	38.01	1.39%	-8.23%	-7.20%	29.82%	NYSE Arca
ISHARES RUSSELL 2000 ETF	USD	173.50	2.07%	6.04%	7.70%	4.73%	NYSE Arca
SPDR GOLD SHARES	USD	177.16	0.68%	-3.29%	-0.62%	23.97%	NYSE Arca
ISHARES 20+ YEAR TREASURY BO	USD	158.16	-0.13%	-0.78%	-2.44%	16.74%	NASDAQ GM
INVESCO QQQ TRUST SERIES 1	USD	290.93	0.88%	-1.25%	-0.39%	36.84%	NASDAQ GM
ISHARES NASDAQ BIOTECHNOLOGY	USD	141.06	1.10%	2.41%	-0.98%	17.05%	NASDAQ GM
ENERGY SELECT SECTOR SPDR	USD	33.88	3.64%	17.11%	11.01%	-43.57%	NYSE Arca
PROSHARES ULTRA VIX ST FUTUR	USD	13.05	-0.19%	-11.04%	-20.62%	1.24%	NYSE Arca
UNITED STATES OIL FUND LP	USD	28.13	-1.85%	6.27%	-2.93%	-72.55%	NYSE Arca
ISHARES MSCI BRAZIL ETF	USD	31.32	1.89%	1.82%	7.48%	-33.99%	NYSE Arca
SPDR S&P OIL & GAS EXP & PR	USD	48.86	5.44%	20.37%	10.82%	-48.46%	NYSE Arca
UTILITIES SELECT SECTOR SPDR	USD	66.09	0.99%	3.06%	4.31%	2.27%	NYSE Arca
ISHARES US REAL ESTATE ETF	USD	85.94	2.61%	6.15%	5.02%	-7.67%	NYSE Arca
SPDR S&P BIOTECH ETF	USD	125.04	1.05%	4.31%	4.25%	31.47%	NYSE Arca
ISHARES IBOXX INVESTMENT GRA	USD	135.76	0.12%	-0.32%	0.04%	6.10%	NYSE Arca
ISHARES JP MORGAN USD EMERGI	USD	113.83	0.39%	0.95%	1.26%	-0.64%	NASDAQ GM
REAL ESTATE SELECT SECT SPDR	USD	37.51	2.29%	5.28%	3.99%	-3.00%	NYSE Arca
ISHARES CHINA LARGE-CAP ETF	USD	47.47	0.79%	-0.54%	8.43%	8.80%	NYSE Arca
CONSUMER STAPLES SPDR	USD	67.53	1.38%	3.75%	2.15%	7.22%	NYSE Arca
VANECK JR GOLD MINERS	USD	54.58	2.04%	-8.48%	-8.19%	29.15%	NYSE Arca
SPDR BBG BARC HIGH YIELD BND	USD	106.44	0.32%	0.29%	0.99%	-2.83%	NYSE Arca
VANGUARD REAL ESTATE ETF	USD	85.38	2.67%	6.86%	5.43%	-7.99%	NYSE Arca
GRAYSCALE BITCOIN TRUST BTC	USD	17.96	-1.54%	2.39%	47.21%	119.29%	OTC US



Source: Bloomberg

Capital Market Laboratory Coordinator: Economist Bruno Bellido
Collaboration: Piero Best, Luis Davila, Laura Delgado and Alonso Hernández
email: pulsobursatil@ulima.edu.pe
facebook: www.facebook.com/pulsobursatil.uy

LIMA

Stocks

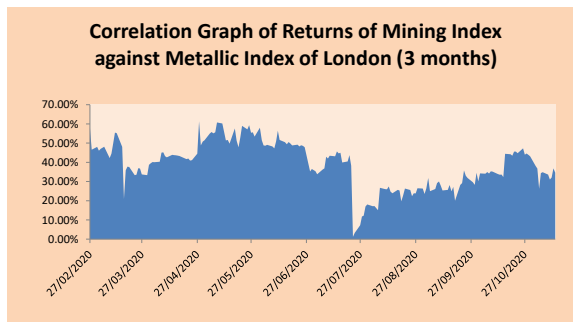
Ticker	Currency	Price	1D*	5D*	30D*	YTD*	Frequency	Volume (US\$)	Beta	Dividend Yield (%)	Price Earning	Market Cap. (M US\$)	Economic Sector*	Index Weight
▲ ALICORC1 PE**	S/.	7.01	0.09%	1.44%	3.55%	-7.07%	100.00%	212,959	0.78	3.57	16.12	1,642.37	Industrial	3.53%
▲ ATACOCB1 PE**	S/.	0.12	0.00%	0.81%	-3.13%	-24.85%	40.00%	3,444	1.04	0.00	-	32.16	Mining	1.02%
▼ BACKUS1 PE**	S/.	19.00	-4.04%	-5.00%	-5.00%	-33.33%	100.00%	12,958	0.51	3.44	5.60	8,100.46	Industrial	0.82%
▲ BAP PE**	US\$	125.00	4.73%	4.81%	3.31%	-41.23%	100.00%	1,304,681	1.50	7.04	-	11,797.79	Diverse	5.82%
▼ BVN PE**	US\$	11.35	-1.30%	-11.74%	-9.42%	-25.82%	100.00%	393,235	1.47	0.23	-	3,128.45	Mining	5.88%
- CASAGRC1 PE**	S/.	4.80	0.00%	0.42%	17.07%	58.42%	95.00%	68,595	0.53	2.23	8.62	110.99	Agricultural	1.31%
▼ BBVAC1 PE**	S/.	2.15	-3.15%	2.38%	2.38%	-30.47%	100.00%	233,975	0.70	4.01	11.19	3,853.34	Finance	2.85%
▲ CORARE1 PE**	S/.	0.82	1.23%	0.00%	13.89%	-9.89%	90.00%	23,704	0.71	8.88	5.83	316.70	Industrial	1.72%
▲ CPACASC1 PE**	S/.	5.55	0.36%	0.91%	0.91%	-9.76%	100.00%	147,823	0.61	6.49	17.90	652.21	Industrial	2.38%
▲ CVERDEC1 PE**	US\$	18.79	-0.58%	-0.58%	4.39%	-2.64%	100.00%	155,790	0.76	0.00	45.36	6,577.55	Mining	5.25%
- ENGEPEC1 PE**	S/.	2.00	0.00%	0.00%	0.00%	-13.04%	50.00%	3,006	0.49	0.00	10.05	1,558.47	Public Services	1.44%
- ENDISPC1**	S/.	5.09	0.00%	-1.36%	0.73%	-30.75%	60.00%	79,037	0.46	0.40	9.60	892.20	Public Services	0.98%
▼ FERREYC1 PE**	S/.	1.68	-2.89%	-1.18%	3.07%	-23.29%	100.00%	187,874	0.74	4.56	33.73	449.94	Diverse	4.90%
- AENZAC1 PE**	S/.	1.56	0.00%	1.30%	-2.50%	-8.24%	90.00%	135,257	0.73	0.00	-	373.37	Diverse	4.05%
▲ IFS PE**	US\$	22.05	7.51%	6.62%	-6.84%	-46.09%	100.00%	249,021	1.18	7.94	21.27	2,545.62	Diverse	7.22%
▲ INRETC1 PE**	US\$	33.80	2.27%	-0.88%	6.96%	-6.11%	100.00%	123,483	0.61	1.67	27.59	3,474.89	Diverse	5.28%
▲ LUSURC1 PE**	S/.	25.99	-0.04%	-0.04%	-5.66%	0.93%	85.00%	222,959	0.50	2.50	22.04	3,474.02	Public Services	1.81%
- MINSUR1 PE**	S/.	1.65	0.00%	-2.94%	-2.94%	5.77%	65.00%	6,685	0.73	0.00	-	1,305.78	Mining	3.09%
- PML PE**	US\$	0.08	0.00%	-1.20%	-6.82%	46.43%	60.00%	1,517	1.26	0.00	-	21.65	Mining	2.12%
▲ RELAPAC1 PE**	S/.	0.07	1.54%	1.54%	1.54%	-46.34%	55.00%	16,224	0.72	0.00	-	150.72	Industrial	2.12%
▲ SCCO PE**	US\$	53.96	0.24%	-2.07%	13.48%	27.17%	100.00%	16,192	0.86	2.78	31.43	41,715.03	Mining	2.14%
- SIDERC1 PE**	S/.	0.77	0.00%	5.48%	14.93%	-13.48%	100.00%	4,215	0.87	44.45	9.15	259.54	Industrial	1.43%
- TV PE**	US\$	0.12	0.00%	1.69%	20.00%	-30.64%	90.00%	1,000	1.47	0.00	-	96.31	Mining	2.93%
▲ UNACEMC1 PE**	S/.	1.35	1.50%	3.85%	-2.17%	-32.50%	100.00%	106,848	0.85	1.93	65.69	673.75	Industrial	3.00%
▲ VOLCABC1 PE**	S/.	0.38	-0.26%	0.00%	-3.08%	-15.06%	100.00%	156,278	0.87	0.00	-	1,733.13	Mining	5.90%
▲ NEXAPEC1 PE**	S/.	2.60	1.17%	7.44%	0.00%	-24.64%	50.00%	35,685	0.99	0.00	-	943.72	Mining	1.56%

Quantity of shares: 26
Source: Bloomberg, Economática
* Bloomberg Industry Classification System
** PER is used in the stock market and original currency of the instrument
*Legend: Variation 1D: 1 Day; 5D: 5 Days; 1M: 1 Month; YTD: Var.% 12/31/18 to date

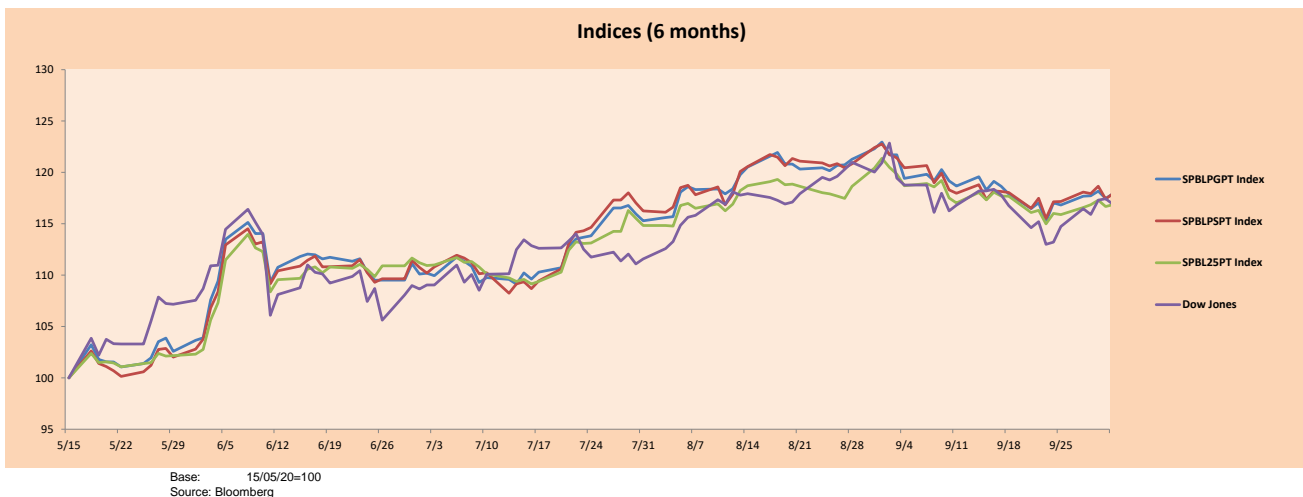
Sectorial Indices

	Close	1D*	5D*	30D*	YTD*	Beta
▼ Mining Index	336.70	-0.30%	-3.29%	5.46%	10.52%	1.06
▲ Consumer Index	1,005.68	0.37%	0.08%	-0.61%	-11.80%	0.43
▲ Industrial Index	176.47	1.34%	2.72%	2.76%	-16.41%	0.58
▲ Banking and Financial Index	811.58	4.57%	6.19%	3.69%	-31.20%	1.51
▲ Construction Index	190.42	1.25%	2.47%	0.78%	-15.98%	0.55
▼ Services Index	607.04	-0.24%	-0.39%	-3.13%	-6.83%	0.08
▼ Electric Index	592.62	-0.24%	-0.39%	-3.13%	-6.83%	0.08

*Legend: Variation 1D: 1 Day; 5D: 5 Days; 1M: 1 Month; YTD: Var.% 12/31/19 to date



Indices (6 months)



Base: 15/05/20=100
Source: Bloomberg

Capital Market Laboratory Coordinator: Economist Bruno Bellido
Collaboration: Piero Best, Luis Davila, Laura Delgado and Alonso Hernández
email: pulsohorsatil@ulima.edu.pe
facebook: www.facebook.com/pulsohorsatil.ul

SOVEREIGN RATING

RISK RATINGS

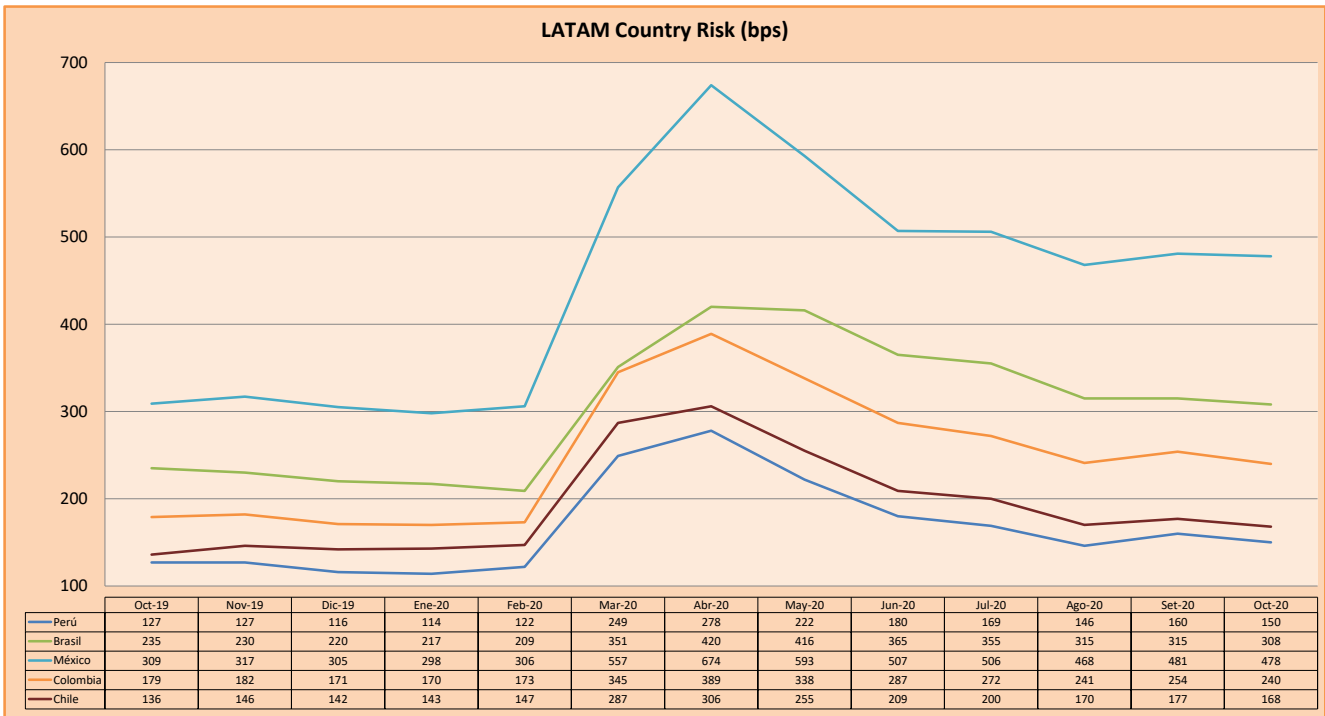
Moody's	S&P	Fitch	
Aaa	AAA	AAA	Prime
Aa1	AA+	AA+	High credit quality
Aa2	AA	AA	
Aa3	AA-	AA-	
A1	A+	A+	Medium-high grade, with low credit risk
A2	A	A	
A3	A-	A-	
Baa1	BBB+	BBB+	Moderate Credit Risk
Baa2	BBB	BBB	
Baa3	BBB-	BBB-	
Ba1	BB+	BB+	It has speculative elements and it is subject to substantial credit risk
Ba2	BB	BB	
Ba3	BB-	BB-	
B1	B+	B+	It is considered speculative and it has high credit risk
B2	B	B	
B3	B-	B-	
Caa1	CCC+		Bad credit conditions and it is subject to high credit risk
Caa2	CCC		
Caa3	CCC-	CCC	
Ca	C		Very close to default or in default
		DDD	
C	D	DD D	

Source: Bloomberg

Latin America Credit Rating			
Clasificadora de riesgo			
Country	Moody's	Fitch	S&P
Peru	A3	BBB+	BBB+
México	Ba2	BB-	BB-
Venezuela	C	WD	SD
Brazil	Ba2	BB-	BB-
Colombia	Baa2	BBB-	BBB-
Chile	A1	A-	A+
Argentine	Ca	WD	CCC+
Panama	Baa1	BBB	BBB+

Source: Bloomberg

LATAM Country Risk (bps)



Source: BCRP

Capital Market Laboratory Coordinator: Economist Bruno Bellido
Collaboration: Piero Best, Luis Davila, Laura Delgado and Alonso Hernández
email: pulsobursatil@ulima.edu.pe
facebook: www.facebook.com/pulsobursatil.ul