

PULSO BURSÁTIL

FACULTAD DE CIENCIAS EMPRESARIALES Y ECONÓMICAS
CARRERA DE ECONOMÍA
LABORATORIO DE MERCADO DE CAPITALES

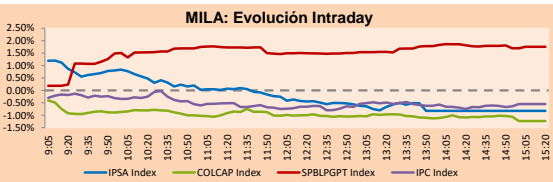


MILA

Lima, October 27, 2020

Main Indexes	Close	1 D	5 D	1 M	YTD	Cap. Burs. (US\$ bill)
▼ IPSA (Chile)	3,697.00	-0.24%	0.66%	2.83%	-20.83%	95.13
▼ IGPA (Chile)	18,685.64	-0.25%	0.56%	2.23%	-20.12%	118.65
▲ COLSC (Colombia)	869.74	0.28%	-0.88%	-2.18%	-11.07%	5.17
▲ COLCAP (Colombia)	1,162.58	-1.23%	-2.09%	-1.20%	-30.07%	64.70
▲ S&P/BVL (Perú)*	18,157.71	1.76%	1.94%	1.58%	-11.54%	89.11
▲ S&P/BVL SEL (Perú)	478.64	0.72%	1.61%	0.44%	-9.93%	71.96
▲ S&P/BVL LIMA 25	22,202.40	0.69%	1.12%	-0.32%	-13.79%	88.31
▼ IPC (México)	38,001.31	-0.64%	-0.52%	2.07%	-12.72%	234.86
▲ S&P MILA 40	425.89	0.40%	-0.89%	3.94%	-29.38%	192.16

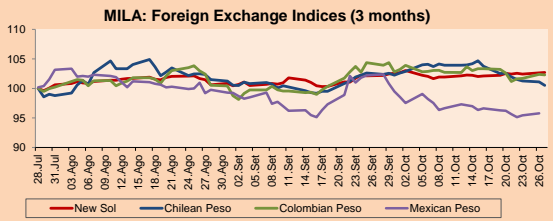
*Legend: Variation 1D: 1 day; 5D: 5 days; 1M: 1 Month; YTD: Var% 12/31/19 to date



Source: Bloomberg

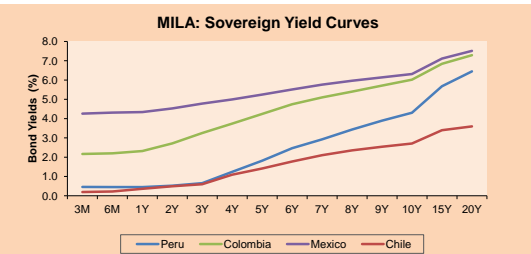
Currency	Price	1D*	5D*	30 D*	YTD*
▲ New Sol (PEN)	3,607.3	0.07%	0.21%	0.56%	8.91%
▼ Chilean Peso (CLP)	771.04	-0.58%	-2.01%	-2.03%	2.57%
▼ Colombian Peso (COP)	3,810.48	-0.09%	-0.29%	-1.97%	16.27%
▲ Mexican Peso (MXN)	21.01	0.37%	-0.51%	-5.92%	11.02%

*Legend: Variation 1D: 1 day; 5D: 5 days; 1M: 1 Month; YTD: Var% 12/31/19 to date



Base: 28/07/20=100
Source: Bloomberg

Fixed Income	Currency	Price	Bid Yield (%)	Ask Yield (%)	Duration
PERU 7.35 07/21/25	USD	128.306	1.23	1.13	4.09
PERU 4.125 08/25/27	USD	117.016	1.53	1.45	6.04
PERU 8.75 11/21/33	USD	170.637	2.45	2.38	9.05
PERU 6.55 03/14/37	USD	153.429	2.58	2.51	11.00
PERU 5.625 11/18/2050	USD	162.328	2.64	2.60	17.91
CHILE 2.25 10/30/22	USD	103.305	0.69	0.48	1.94
CHILE 3.125 01/21/26	USD	110.744	1.06	0.96	4.84
CHILE 3.625 10/30/42	USD	115.11	2.74	2.68	15.78
COLOM 11.85 03/09/28	USD	165.708	2.19	2.11	5.56
COLOM 10.375 01/28/33	USD	157.96	4.35	4.15	8.03
COLOM 7.375 08/18/37	USD	142.92	3.92	3.85	10.97
COLOM 6.125 01/18/41	USD	130.886	3.93	3.88	12.77
MEX 4 10/02/23	USD	130.886	3.925	3.879	12.77
MEX5.55 01/45	USD	124.153	4.01	3.96	14.48



Source: Bloomberg

Equity

Largest gains	Exchange	Currency	Price	▲%
BUENAVENTURA-AD	Peru	USD	13.29	7.18
SOQUIMICH-B	Chile	CLP	28988.00	3.53
ORBITA ADVANCE CC	Mexico	MXN	39.00	3.31
GRUMA SAB-B	Mexico	MXN	236.22	3.31
SOUTHERN COPPEF	Peru	USD	52.31	2.57

Per Turnover	Exchange	Amount (US\$)
GRUPO F BANORT-O	Mexico	45,487,456
AMERICA MOVIL-L	Mexico	24,856,338
WALMART DE MEXIC	Mexico	23,912,160
GRUPO MEXICO-B	Mexico	21,255,472
MEGACABLE-CPO	Mexico	11,673,416

Largest losses	Exchange	Currency	Price	▼%
GRUPO TELEV-CPO	Mexico	MXN	29.66	-4.78
GRUPO FIN INB-O	Mexico	MXN	16.42	-4.09
FIBRA TERRA	Mexico	MXN	29.22	-2.63
CENCOSUD SA	Chile	CLP	1110	-2.63
ENTEL	Chile	CLP	4699.8	-2.60

Per Volume	Exchange	Volume
BANCO SANTANDER	Chile	107,297,156
BANCO DE CHILE	Chile	64,117,489
ENEL CHILE SA	Chile	47,308,666
AMERICA MOVIL-L	Mexico	39,241,163
ENEL AMERICAS SA	Chile	35,065,415

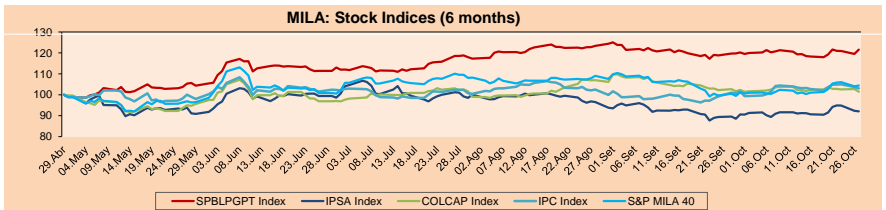
MILA

Peru: The BVL General Index ended today's session with a positive result of +1.76%. The index maintains an annual accumulated negative trend of -11.54% in local currency, while the adjusted return in dollars amounts to -18.77%. Then, the S&P / BVL Peru SEL varied by +0.72% while the S&P / BVL LIMA 25 by +0.69%. The PEN spot reached 5 / 3.6073. Headline: Banks cancel credit cards to 935,000 people during pandemic.

Chile: The IPSA index ended the day with a negative return of -0.24%. The sectors most affected in the session were Communication Services (-2.60%) and Public Services (-1.57%). The worst performing stocks were Engie Energia Chile SA (-4.26%) and Cencosud SA (-2.63%). Headline: Chilean Copper Union says strike will continue after meeting with mining company Lundin.

Colombia: The COLCAP index had a negative result of -1.23%. The sectors with the best returns on the day were Materials (-1.78%) and Public Services (-1.41%). The worst performing stocks were Inversiones Argos SA (-3.46%) and Promigas SA (-2.99%). Headline: Colombia projects drop in oil and coal production in the next decade.

Mexico: The MEXBOL index closed the session with a negative result of -0.64%. The sectors with the worst returns of the day were Real Estate (-2.95%) and Health (-2.34%). The worst performing stocks were Grupo Televisa SA (-4.78%) and Grupo Financiero Inbursa SA (-4.09%). Headline: Grupo México earns just over US \$ 1,000M through September, a reduction of 14.9%.

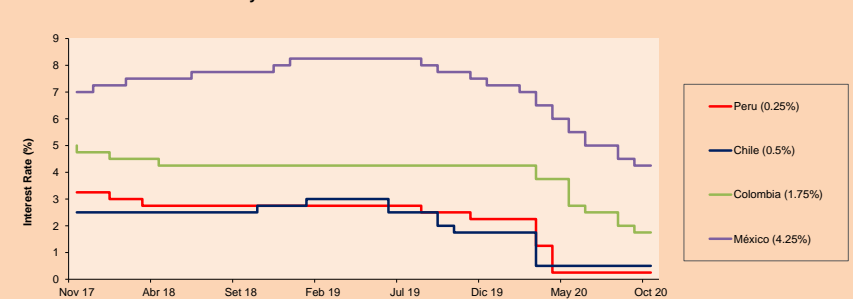


Base: 30/04/20=100
Source: Bloomberg

ETFs

ETFs	Curr.	Close	1D	5D	30 D	YTD	Exchange
▲ iShares MSCI All Peru Caped Index Fund	USD	30.57	1.16%	2.79%	4.94%	-17.49%	NYSE Arca
▲ iShares MSCI All Chile Caped Index Fund	USD	24.69	-0.64%	1.44%	4.49%	-25.92%	Cboe BZX
▼ Global X MSCI Colombia	USD	8.3824	-0.09%	-1.27%	1.11%	-39.69%	NYSE Arca
▲ iShares MSCI Mexico Capped	USD	35.44	-0.98%	-0.59%	9.99%	-21.30%	NYSE Arca
▲ iShares MSCI Emerging Markets	USD	45.92	0.44%	-0.02%	6.94%	2.34%	NYSE Arca
▲ Vanguard FTSE Emerging Markets	USD	44.93	0.36%	-0.27%	6.60%	1.03%	NYSE Arca
▲ iShares Core MSCI Emerging Markets	USD	54.96	0.44%	-0.04%	7.03%	2.23%	NYSE Arca
▲ iShares JP Morgan Emerging Markets Bonds	USD	56.14	0.11%	-0.53%	3.53%	-4.30%	Cboe BZX
▼ Morgan Stanley Emerging Markets Domestic	USD	5.63	-0.71%	-1.40%	-0.18%	-19.46%	New York

MILA: Policy Rate



Source: Bloomberg

Capital Market Laboratory Coordinator: Economist Bruno Bellido
Collaboration: Piero Best, Luis Davila, Laura Delgado and Alonso Hernández
email: pulsobursatil@ulima.edu.pe
facebook: www.facebook.com/pulsobursatil.ul

The content of this document is just for informational purposes. The information and opinions expressed should not be considered as recommendations for future decisions. Under any circumstances, the Capital Market Laboratory of University of Lima will be responsible for the use of the statements in this document.

LIMA

Stocks

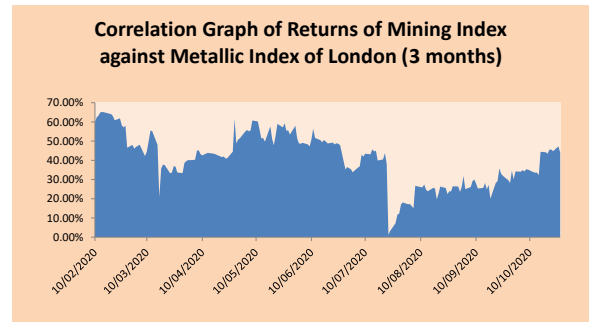
Ticker	Currency	Price	1D*	5D*	30D*	YTD*	Frequency	Volume (US\$)	Beta	Dividend Yield (%)	Price Earning	Market Cap. (M US\$)	Economic Sector*	Index Weight
▲ ALICORC1 PE**	S/.	7.38	0.28%	-0.88%	-2.18%	-11.07%	95.00%	75,647	0.80	3.39	16.97	1,745.93	Industrial	3.53%
▲ ATACOCB1 PE**	S/.	0.13	0.00%	1.56%	1.56%	-21.21%	30.00%	3,005	1.04	0.00	-	34.05	Mining	1.02%
- BACKUSI1 PE**	S/.	19.00	0.00%	0.05%	-5.00%	-33.33%	95.00%	2,107	0.50	5.44	5.60	8,182.18	Industrial	0.82%
▲ BAP PE**	US\$	120.00	0.17%	-0.41%	-2.90%	-43.58%	100.00%	229,818	1.18	7.34	-	11,325.88	Diverse	5.82%
- BVN PE**	US\$	13.29	7.18%	5.48%	10.29%	-13.14%	100.00%	1,683,745	1.73	0.19	-	3,663.18	Mining	5.88%
- CASAGRC1 PE**	S/.	4.91	0.00%	14.19%	41.50%	62.05%	80.00%	1,361	0.56	0.00	8.82	114.65	Agricultural	1.31%
- BBVAC1 PE**	S/.	2.10	0.00%	-2.91%	-2.10%	-32.08%	95.00%	86,801	0.62	4.11	10.93	3,801.33	Finance	2.85%
▲ CORARE1 PE**	S/.	0.81	2.53%	9.46%	17.39%	-10.99%	65.00%	5,263	1.00	5.22	5.76	308.83	Industrial	1.72%
▼ CPACASC1 PE**	S/.	5.50	-0.90%	1.85%	2.23%	-10.57%	75.00%	5,848	0.60	6.55	17.74	652.73	Industrial	2.38%
- CVERDEC1 PE**	US\$	19.00	0.00%	1.60%	6.74%	-1.55%	95.00%	22,439	0.82	0.00	45.86	6,651.06	Mining	5.25%
▼ ENGEPEC1 PE**	S/.	2.08	-0.95%	4.00%	4.00%	-9.57%	50.00%	7,827	0.48	8.23	10.70	1,636.85	Public Services	1.44%
- ENDISPC1**	S/.	5.20	0.00%	1.95%	4.00%	-29.25%	45.00%	8,217	0.46	0.39	9.16	920.50	Public Services	0.98%
- FERREYC1 PE**	S/.	1.73	0.00%	1.76%	0.58%	-21.00%	100.00%	43,354	0.89	4.43	34.73	467.92	Diverse	4.90%
▼ GRAMONC1 PE**	S/.	1.36	-2.86%	-2.86%	-20.00%	-20.00%	70.00%	135,861	0.74	0.00	-	328.72	Diverse	4.05%
▲ IFS PE**	US\$	22.25	0.23%	-1.98%	-6.12%	-45.60%	95.00%	113,892	1.08	7.87	21.26	2,568.71	Diverse	7.22%
- INRETC1 PE**	US\$	32.60	1.65%	5.33%	-5.51%	-9.44%	90.00%	424,435	0.69	1.73	27.08	3,351.52	Diverse	5.28%
- LUSURC1 PE**	S/.	27.20	0.00%	-0.91%	2.49%	5.63%	70.00%	2,277	0.46	0.00	23.06	3,671.74	Public Services	1.81%
- MINSUR1 PE**	S/.	1.67	0.00%	0.00%	1.21%	7.05%	55.00%	14,976	0.74	0.00	-	1,334.69	Mining	3.09%
- PML PE**	US\$	0.09	0.00%	1.18%	-1.15%	53.57%	40.00%	1,750	1.30	0.00	-	22.71	Mining	2.12%
- RELAPAC1 PE**	S/.	0.07	0.00%	0.00%	0.00%	-47.15%	70.00%	19,795	1.06	0.00	-	149.90	Industrial	2.12%
▲ SCCO PE**	US\$	52.31	2.57%	6.76%	18.56%	23.29%	70.00%	58,673	1.09	2.68	30.47	40,439.46	Mining	2.14%
▲ SIDERC1 PE**	S/.	0.70	1.45%	4.48%	4.48%	-21.35%	95.00%	3,047	0.88	48.89	8.32	238.28	Industrial	1.43%
▼ TV PE**	US\$	0.10	-0.97%	-5.56%	-3.77%	-41.04%	90.00%	10,569	1.44	0.00	-	81.86	Mining	2.93%
▲ UNACEMC1 PE**	S/.	1.34	2.29%	-2.90%	-6.29%	-33.00%	85.00%	5,357	0.75	1.94	8.56	675.38	Industrial	3.00%
▲ VOLCABC1 PE**	S/.	0.38	0.26%	-1.04%	0.26%	-14.38%	100.00%	83,807	1.04	0.00	-	1,756.84	Mining	5.90%
▼ NEXAPEC1 PE**	S/.	2.50	-3.85%	-3.85%	-7.06%	-27.54%	40.00%	1,799	0.98	0.00	-	917.28	Mining	1.56%

Quantity of shares: 26
 Source: Bloomberg, Económática
 * Bloomberg Industry Classification System
 ** PER is used in the stock market and original currency of the instrument
 *Legend: Variation 1D: 1 Day; 5D: 5 Days; 1M: 1 Month; YTD: Var.% 12/31/18 to date

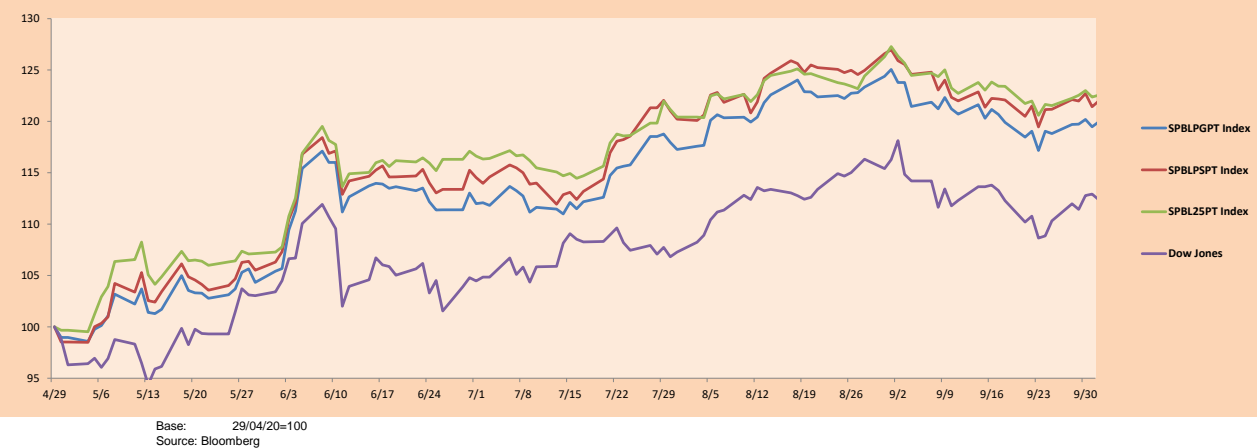
Sectorial Indices

	Close	1D*	5D*	30D*	YTD*	Beta
▲ Mining Index	344.04	3.83%	5.62%	13.82%	12.93%	1.39
▲ Consumer Index	1,008.59	0.69%	2.03%	-3.41%	-11.54%	0.51
▲ Industrial Index	169.94	0.21%	0.33%	-3.62%	-19.51%	0.61
▲ Banking and Financial Index	776.26	0.23%	-0.37%	-2.51%	-34.19%	1.10
▲ Construction Index	181.56	0.29%	-0.29%	-5.40%	-19.89%	0.50
▲ Services Index	625.34	0.00%	-0.04%	1.41%	-4.02%	0.05
▲ Electric Index	610.49	0.00%	-0.04%	1.41%	-4.02%	0.05

*Legend: Variation 1D: 1 Day; 5D: 5 Days; 1M: 1 Month; YTD: Var.% 12/31/19 to date



Indices (6 months)



Base: 29/04/20=100
 Source: Bloomberg

Capital Market Laboratory Coordinator: Economist Bruno Bellido
 Collaboration: Piero Best, Luis Davila, Laura Delgado and Alonso Hernández
 email: pulsohorsatil@ulima.edu.pe
 facebook: www.facebook.com/pulsohorsatil.ul

The content of this document is just for informational purposes. The information and opinions expressed should not be considered as recommendations for future decisions. Under any circumstances, the Capital Market Laboratory of University of Lima will be responsible for the use of the statements in this document.

SOVEREIGN RATING

RISK RATINGS

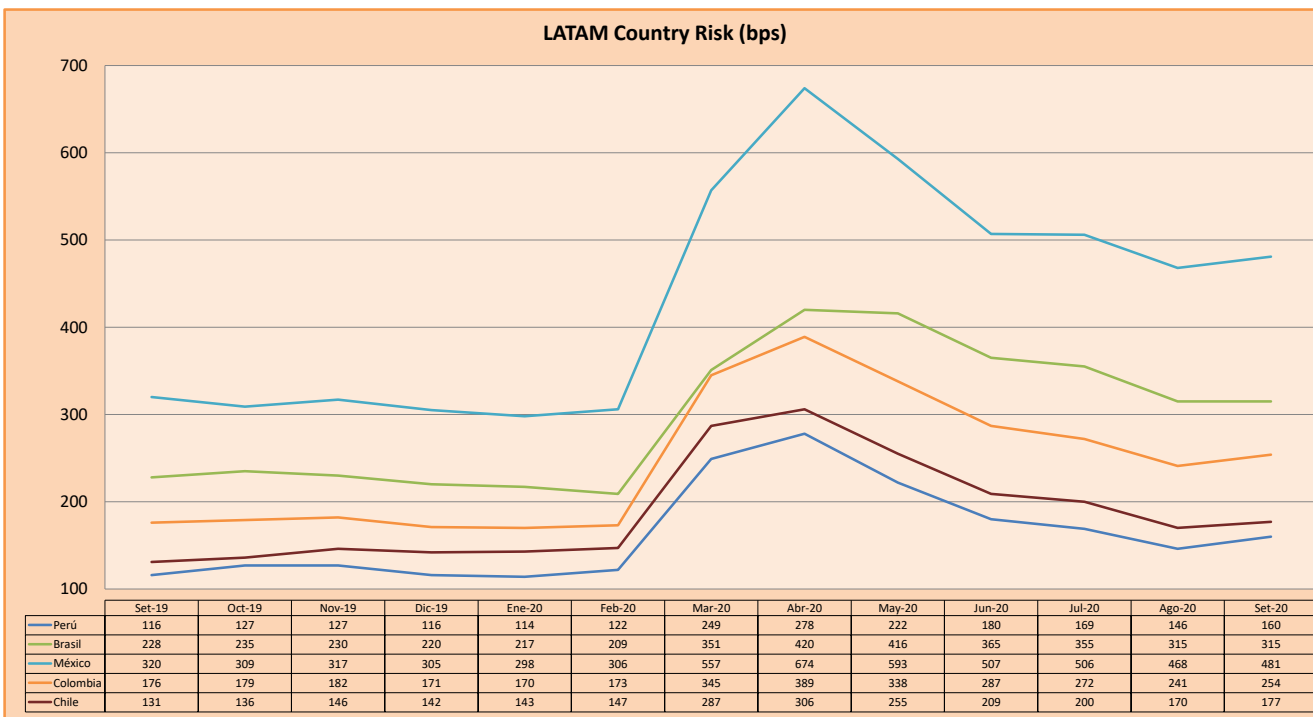
Moody's	S&P	Fitch	
Aaa	AAA	AAA	Prime
Aa1	AA+	AA+	High credit quality
Aa2	AA	AA	
Aa3	AA-	AA-	
A1	A+	A+	Medium-high grade, with low credit risk
A2	A	A	
A3	A-	A-	
Baa1	BBB+	BBB+	Moderate Credit Risk
Baa2	BBB	BBB	
Baa3	BBB-	BBB-	
Ba1	BB+	BB+	It has speculative elements and it is subject to substantial credit risk
Ba2	BB	BB	
Ba3	BB-	BB-	
B1	B+	B+	It is considered speculative and it has high credit risk
B2	B	B	
B3	B-	B-	
Caa1	CCC+		Bad credit conditions and it is subject to high credit risk
Caa2	CCC		
Caa3	CCC-	CCC	
Ca	C		Very close to default or in default
		DDD	
C	D	DD D	

Source: Bloomberg

Latin America Credit Rating			
Clasificadora de riesgo			
Country	Moody's	Fitch	S&P
Peru	A3	BBB+	BBB+
México	Ba2	BB-	BB-
Venezuela	C	WD	SD
Brazil	Ba2	BB-	BB-
Colombia	Baa2	BBB-	BBB-
Chile	A1	A-	A+
Argentine	Ca	WD	CCC+
Panama	Baa1	BBB	BBB+

Source: Bloomberg

LATAM Country Risk (bps)



Source: BCRP

Capital Market Laboratory Coordinator: Economist Bruno Bellido
Collaboration: Piero Best, Luis Davila, Laura Delgado and Alonso Hernández
email: pulsobursatil@ulima.edu.pe
facebook: www.facebook.com/pulsobursatil.ul