

PULSO BURSÁTIL

FACULTAD DE CIENCIAS EMPRESARIALES Y ECONÓMICAS
CARRERA DE ECONOMÍA
LABORATORIO DE MERCADO DE CAPITALES

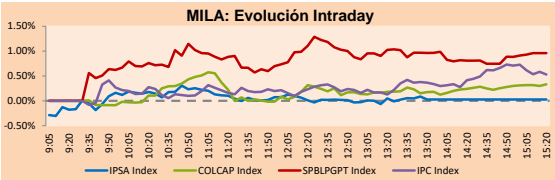


MILA

Lima, december 3, 2020

Main Indexes	Close	1 D	5 D	1 M	YTD	Cap. Burs. (US\$ bill)
▲ IPSA (Chile)	4,188.80	0.76%	1.62%	19.07%	-10.30%	108.70
▲ IGPA (Chile)	20,929.88	0.77%	1.57%	17.53%	-10.53%	133.44
▲ COLSC (Colombia)	998.10	0.58%	3.95%	12.32%	2.05%	5.67
▲ COLCAP (Colombia)	1,298.13	0.75%	2.78%	12.26%	-21.91%	79.23
▲ S&P/BVL (Perú)*	20,474.49	0.79%	4.41%	15.62%	-0.25%	101.84
▲ S&P/BVL SEL (Perú)	535.38	0.47%	3.20%	14.80%	0.75%	83.76
▲ S&P/BVL LIMA 25	24,671.34	0.90%	2.77%	13.27%	-4.20%	100.96
▲ IPC (México)	43,934.21	1.70%	4.97%	17.23%	0.90%	279.46
▲ S&P MILA 40	502.03	0.83%	3.85%	19.98%	-16.75%	224.74

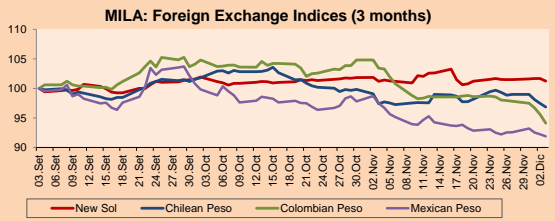
*Legend: Variation 1D: 1 day; 5D: 5 days; 1M: 1 Month; YTD: Var% 12/31/19 to date



Source: Bloomberg

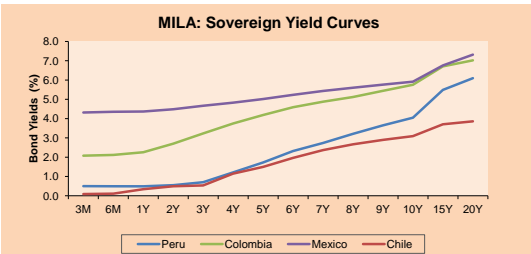
Currency	Price	1D*	5D*	30 D*	YTD*
▼ New Sol (PEN)	3,594.0	-0.44%	-0.25%	0.01%	8.50%
▼ Chilean Peso (CLP)	750.79	-0.62%	-2.03%	-0.54%	-0.13%
▼ Colombian Peso (COP)	3,476.10	-1.55%	-3.89%	-9.00%	6.07%
▼ Mexican Peso (MXN)	19.90	-0.36%	-0.72%	-5.75%	5.12%

*Legend: Variation 1D: 1 day; 5D: 5 days; 1M: 1 Month; YTD: Var% 12/31/19 to date



Base: 03/09/20=100
Source: Bloomberg

Fixed Income	Currency	Price	Bid Yield (%)	Ask Yield (%)	Duration
PERU 7.35 07/21/25	USD	127.706	1.23	1.12	3.99
PERU 4.125 08/25/27	USD	116.552	1.55	1.49	5.94
PERU 8.75 11/21/33	USD	167.986	2.59	2.52	9.15
PERU 6.55 03/14/37	USD	149.331	2.79	2.73	10.85
PERU 5.625 11/18/2050	USD	153.764	2.94	2.90	17.74
CHILE 2.25 10/30/22	USD	103.374	0.58	0.34	1.87
CHILE 3.125 01/21/26	USD	110.46	1.07	0.98	4.74
CHILE 3.625 10/30/42	USD	116.632	2.65	2.59	15.97
COLOM 11.85 03/09/28	USD	165.571	2.18	1.96	5.47
COLOM 10.375 01/28/33	USD	158.652	4.19	4.00	7.97
COLOM 7.375 09/18/37	USD	145.294	3.76	3.68	10.92
COLOM 6.125 01/18/41	USD	133.458	3.78	3.71	12.72
MEX 4 10/02/23	USD	133.458	3.775	3.711	12.72
MEX5.55 01/45	USD	128.944	3.74	3.70	14.57



Source: Bloomberg

Equity

Largest gains	Exchange	Currency	Price	▲%
CEMEX SAB-CPO	Mexico	MXN	10.58	6.12
INDUSTRIAS PENOL	Mexico	MXN	350.45	4.26
ALFA SAB-A	Mexico	MXN	16.81	3.89
CERVEZAS	Chile	CLP	5825.00	3.56
CENCOSUD SA	Chile	CLP	1375.00	3.38

Per Turnover	Exchange	Amount (US\$)
GRUPO F BANORT-O	Mexico	68,509,786
GRUPO MEXICO-B	Mexico	44,170,513
ENEL AMERICAS SA	Chile	37,342,373
AMERICA MOVIL-L	Mexico	37,330,351
WALMART DE MEXIC	Mexico	36,289,408

Largest losses	Exchange	Currency	Price	▼%
GRUMA SAB-B	Mexico	MXN	227.03	-3.69
CONCHATORO	Chile	CLP	1240	-2.71
MEGACABLE-CPO	Mexico	MXN	73.47	-2.62
SMU SA	Chile	CLP	113.05	-2.54
FOMENTO ECON-UBI	Mexico	MXN	151.46	-2.34

Per Volume	Exchange	Volume
ITAU CORPBANCA	Chile	474,963,910
ENEL AMERICAS SA	Chile	245,037,286
BANCO DE CHILE	Chile	225,524,558
BANCO SANTANDER	Chile	122,091,300
AGUAS ANDINAS-A	Chile	65,121,504

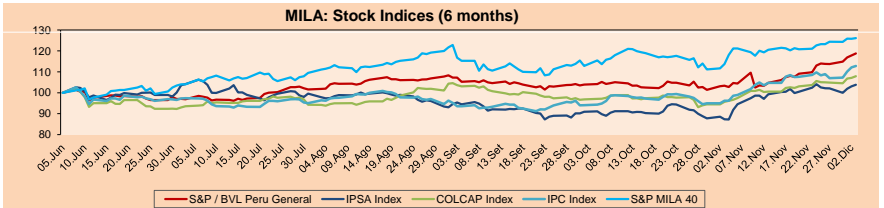
MILA

Peru: The General Index of the BVL closed today's session with a positive result of +0.79%. The index maintains an annual accumulated negative trend of -0.25% in local currency, while the adjusted return in dollars amounts to -0.07%. Then, the S&P / BVL Peru SEL varied by +0.47% while the S&P / BVL LIMA 25 by +0.90%. The PEN spot reached 5 / 3.5940. Headline: Government allows theaters and casinos to operate: phase 4 of economic reactivation was approved

Chile: The IPSA index closed the day with a positive return of +0.76%. The sectors that benefited the most during the day were First Needs Products (+1.90%) and Energy (+1.62%). The best performing stocks were Compañías Cervecerías Unidas SA (+3.56%) and Cencosud SA (+3.38%). Headline: Chilean Chamber of Deputies approves new partial retirement of pensions after intense negotiations with the Government

Colombia: The COLCAP Index had a positive result of +0.75%. The sectors with the best returns of the day were Public Services (+1.25%) and Finance (+1.16%). The securities with the best results were BanColombia SA (+2.08%) and Grupo Aval Actions y Valores (+1.11%). Headline: Colombia makes a disbursement of US \$ 5,400M of flexible credit line from the IMF

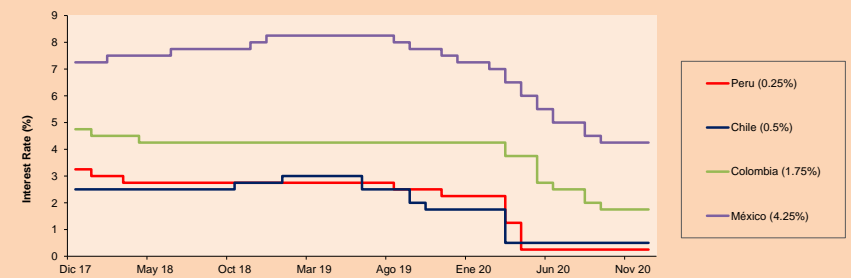
Mexico: The MEXBOL Index closed the session with a positive result of +0.59%. The sectors with the best returns of the day were Materials (+3.91%) and Finance (+1.04%). The best performing stocks were Cemex SAB de CV (+6.12%) and Industrias Peñoles SAB de CV (+4.26%). Headline: Banking in Mexico, with enough capital to face economic challenges, according to Banxico



Base: 08/06/20=100
Source: Bloomberg

ETFs	Curr.	Close	1D	5D	30 D	YTD	Exchange
▲ iShares MSCI All Peru Caped Index Fund	USD	34.37	0.83%	3.85%	13.88%	-7.23%	NYSE Arca
▲ iShares MSCI All Chile Caped Index Fund	USD	28.19	0.71%	0.64%	16.15%	-15.42%	Cboe BZX
▲ Global X MSCI Colombia	USD	10.1751	1.14%	4.52%	22.29%	-26.80%	NYSE Arca
▲ iShares MSCI Mexico Capped	USD	43	0.89%	3.46%	24.28%	-4.51%	NYSE Arca
▲ iShares MSCI Emerging Markets	USD	50.33	1.15%	1.53%	10.66%	12.17%	NYSE Arca
▲ Vanguard FTSE Emerging Markets	USD	49.01	0.99%	1.45%	10.16%	10.21%	NYSE Arca
▲ iShares Core MSCI Emerging Markets	USD	60.48	1.02%	1.60%	11.01%	12.50%	NYSE Arca
▲ iShares JP Morgan Emerging Markets Bonds	USD	60.28	0.74%	1.02%	7.86%	2.76%	Cboe BZX
▲ Morgan Stanley Emerging Markets Domestic	USD	6.26	0.81%	2.79%	11.39%	-10.44%	New York

MILA: Policy Rate



Source: Bloomberg

Capital Market Laboratory Coordinator: Economist Bruno Bellido
Collaboration: Piero Best, Luis Davila, Laura Delgado and Alonso Hernández
email: pulsobursatil@ulima.edu.pe
facebook: www.facebook.com/pulsobursatil.u

The content of this document is just for informational purposes. The information and opinions expressed should not be considered as recommendations for future decisions. Under any circumstances, the Capital Market Laboratory of University of Lima will be responsible for the use of the statements in this document.

PULSO BURSÁTIL

FACULTAD DE CIENCIAS EMPRESARIALES Y ECONÓMICAS
CARRERA DE ECONOMÍA
LABORATORIO DE MERCADO DE CAPITALES



WORLD

Main Indices	Close	1 D*	5 D*	1 M*	YTD*	Market Cap. (US\$ Mill.)
▲ Dow Jones (USA)	29,969.52	0.29%	0.32%	7.62%	5.01%	9,279,536
▼ Standard & Poor's 500 (EEUU)	3,666.72	-0.06%	1.02%	6.48%	13.49%	31,730,657
▲ NASDAQ Composite (USA)	12,377.18	0.23%	2.34%	6.78%	37.94%	19,902,932
▲ Stoxx Europe 600 (Europe)	391.72	0.01%	0.02%	7.82%	-5.80%	8,838,437
▼ DAX (Germany)	13,252.86	-0.45%	-0.25%	7.54%	0.03%	995,368
▲ FTSE 100 (United Kingdom)	6,490.27	-0.42%	-2.00%	10.32%	-13.95%	1,381,673
▼ CAC 40 (France)	5,574.36	-0.15%	0.14%	13.23%	-6.75%	1,471,599
▼ IBEX 35 (Spain)	8,200.70	-0.24%	1.19%	20.92%	-14.12%	439,944
▲ MSCI AC Asia Pacific Index	193.14	0.84%	0.35%	9.25%	13.17%	24,724,041
▲ HANG SENG (Hong Kong)	26,728.50	0.74%	-0.34%	7.23%	-5.33%	3,759,894
▼ SHANGHAI SEC Comp. (China)	3,442.14	-0.21%	2.15%	4.66%	12.46%	6,397,627
▲ NIKKEI 225 (Japan)	26,809.37	0.03%	1.03%	12.78%	12.97%	3,713,228
▲ S&P / ASX 200 (Australia)	6,615.27	0.38%	-0.32%	9.58%	-0.62%	1,551,934
▲ KOSPI (South Korea)	2,696.22	0.59%	3.59%	15.99%	24.41%	1,640,728

*Legend: Variation 1D: 1 Day; 5D: 5 Days; 1M: 1 Month; YTD: Var. % 12/31/19 to date

Equity

Germany (Stocks from DAX Index)						
Largest gains	Curr.	Price	▲ %	Exchange	Largest losses	Curr.
DBK GY	EUR	9.751	2.32	Xetra	LIN GY	EUR
ADS GY	EUR	273.8	2.24	Xetra	EOAN GY	EUR
MRK GY	EUR	137.4	1.63	Xetra	FRE GY	EUR
DWNI GY	EUR	42	1.25	Xetra	DAI GY	EUR

Europe (Stocks from STOXX EUROPE 600)						
Largest gains	Curr.	Price	▲ %	Exchange	Largest losses	Curr.
NETW LN	Gbp	311.2	9.12	Londres	NEL NO	NOK
BTIA LN	Gbp	134.45	6.41	Londres	FORTUM FH	EUR
CCL LN	Gbp	1475.5	6.23	Londres	WWS DC	DKK
EMG LN	Gbp	128.1	6.09	Londres	URW NA	EUR

Global Overview:

United States:

US markets closed today's session with mixed results, driven by recommendations regarding Tesla Inc shares and the cut in expected production of vaccines provided by Pfizer. Tesla Inc rose +4.23% after Goldman Sachs recommended buying the shares in the run-up to the electric car maker's addition to the S&P 500 index. Also, challenges in Pfizer Inc's supply chain for raw materials used in its COVID-19 vaccine played an important role in the decision to cut its production target for 2020 from 100 million doses to 50 million, which is reduced to 25 million people by having a regimen of injections per patient and impacts on the benchmark for most US stocks, the S&P 500. In corporate stocks, cloud security provider Zscaler Inc rallied by +26.45% after posting better-than-expected revenue and earnings, while Boeing Co rose by +5.96% after budget airline Ryanair ordered an additional 75 737 MAX aircraft with a list price of \$ 9 billion. Thus, the DJIA +0.29% and Nasdaq +0.23% rose; meanwhile, the S&P 500 fell by -0.06%.

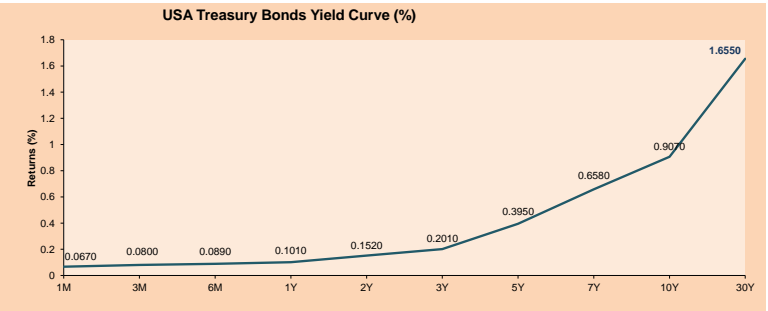
Europe:

European markets ended today's session with mixed results, as uncertainty over Brexit erodes sentiment in the market. Movements in the market are influenced by the Brexit talks following the trade deal between Britain and the European Union (EU). EU officials commented that "significant disagreements" continue to emerge on the thorniest topics in talks with the UK. Regarding the latest vaccine authorizations from Pfizer and BioNTech, expectations are that regulators in the US and Europe will make decisions on that vaccine and a similar from Moderna soon, according to CNBC. In corporate stocks, engineering company Rolls-Royce + 15% was the biggest winner in the STOXX 600 after Bloomberg announced that the company sees an opportunity to return to the narrow-body aircraft market. On the other hand, the Norwegian company Nel -4% and the German company Nemetschek -5%. Thus, the STOXX 600 + 0.01%, FTSE 100 + 0.42% and FTSE MIB + 0.16% closed higher; on the other hand, the CAC -0.16% and DAX -0.45% finished in negative territory, among other indices.

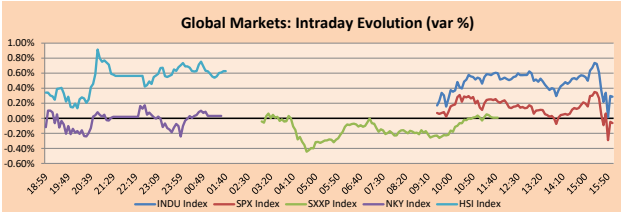
Asia:

Asian markets closed the session with mixed results as the progress of the Covid-19 vaccine generates optimism among investors in the region. In Japan, the shares remained near a high of 29.5 years, as the main western countries are getting closer to launching vaccines against the coronavirus, with Great Britain being the first to approve it. In addition, the government has also pledged to increase fiscal spending. In parallel with the promises of the president-elect of the United States, Joe Biden, on moving quickly for the measures of an upcoming stimulus. On the other hand, in China stocks closed with negative results due to new tensions between Beijing and Washington after the United States House of Representatives approved a bill that threatens to remove Chinese companies from the US stock exchanges. However, losses were limited after the Institute of Microbiology of the Chinese Academy of Sciences said it worked with Chongqing Zhifei + 4.6% to carry out a phase III trial of a coronavirus vaccine in human population. In November. Thus, the main indexes Nikkei 225 + 0.03%, Hang Seng + 0.74%, ASX 200 + 0.38%, CSI 300 -0.20% and Shanghai Composite -0.21% closed with mixed results.

ETFs	Curr.	Close	1D	5D	30 D	YTD	Exchange
SPDR S&P 500 ETF TRUST	USD	366.69	-0.03%	1.11%	9.12%	13.33%	NYSE Arca
ISHARES MSCI EMERGING MARKET	USD	50.33	1.15%	1.53%	10.66%	12.17%	NYSE Arca
ISHARES IBOXX HIGH YLD CORP	USD	86.49	0.06%	0.26%	2.43%	-1.65%	NYSE Arca
FINANCIAL SELECT SECTOR SPDR	USD	28.63	0.03%	0.25%	15.21%	-6.99%	NYSE Arca
VANECK GOLD MINERS	USD	35.51	-1.28%	4.32%	-9.80%	21.28%	NYSE Arca
ISHARES RUSSELL 2000 ETF	USD	183.92	0.56%	0.18%	14.78%	11.02%	NYSE Arca
SPDR GOLD SHARES	USD	172.81	0.79%	1.95%	-3.41%	20.93%	NYSE Arca
ISHARES 20+ YEAR TREASURY BO	USD	157.51	0.81%	-0.74%	-0.10%	16.26%	NASDAQ GM
INVESCO QQQ TRUST SERIES 1	USD	304.28	0.14%	2.70%	10.79%	43.12%	NASDAQ GM
ISHARES NASDAQ BIOTECHNOLOGY	USD	146.44	1.00%	5.39%	10.36%	21.52%	NASDAQ GM
ENERGY SELECT SECTOR SPDR	USD	38.53	1.05%	-2.13%	30.48%	-35.83%	NYSE Arca
PROSHARES ULTRA VIX ST FUTUR	USD	11.35	1.43%	0.44%	-40.82%	-11.95%	NYSE Arca
UNITED STATES OIL FUND LP	USD	31.25	0.90%	-0.98%	16.95%	-69.51%	NYSE Arca
ISHARES MSCI BRAZIL ETF	USD	35.47	1.69%	4.75%	28.89%	-25.25%	NYSE Arca
SPDR S&P OIL & GAS EXP & PR	USD	56.25	1.28%	-4.21%	34.57%	-40.66%	NYSE Arca
UTILITIES SELECT SECTOR SPDR	USD	63.04	-1.04%	-2.11%	-2.52%	-2.45%	NYSE Arca
ISHARES US REAL ESTATE ETF	USD	84.99	0.75%	-0.20%	4.94%	-8.69%	NYSE Arca
SPDR S&P BIOTECH ETF	USD	133.72	0.69%	5.44%	15.44%	40.63%	NYSE Arca
ISHARES IBOXX INVESTMENT GRA	USD	117.66	0.39%	0.18%	-40.82%	-11.95%	NYSE Arca
ISHARES JP MORGAN USD EMERGI	USD	114.68	0.42%	0.51%	3.60%	0.10%	NASDAQ GM
REAL ESTATE SELECT SECT SPDR	USD	36.84	0.74%	-0.14%	3.66%	-4.73%	NYSE Arca
ISHARES CHINA LARGE-CAP ETF	USD	47.13	-0.04%	-0.21%	4.55%	8.02%	NYSE Arca
CONSUMER STAPLES SPDR	USD	67.11	0.25%	0.27%	4.39%	6.56%	NYSE Arca
VANECK JR GOLD MINERS	USD	52.15	-0.80%	6.15%	-6.52%	23.40%	NYSE Arca
SPDR BBG BARC HIGH YIELD BND	USD	107.83	0.06%	0.28%	2.60%	-1.56%	NYSE Arca
VANGUARD REAL ESTATE ETF	USD	85.12	0.84%	-0.19%	6.49%	-8.27%	NYSE Arca
GRAYSACLE BITCOIN TRUST BTC	USD	24.00	2.61%	15.03%	56.64%	193.04%	OTC US



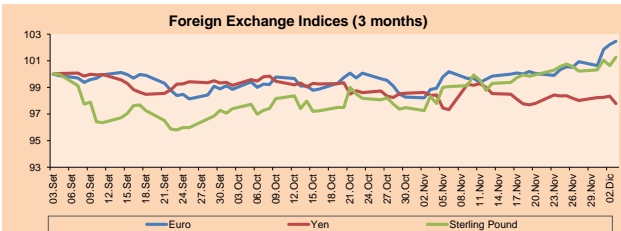
Source: Bloomberg



Source: Bloomberg

Currency	Price	1 D*	5 D*	1 M*	YTD*
▲ Euro	1.2144	0.24%	1.94%	3.66%	8.30%
▲ Yen	103.8400	-0.56%	-0.40%	-0.62%	-4.39%
▲ Sterling Pound	1.3450	0.64%	0.69%	2.99%	1.46%
▲ Yuan	6.5429	-0.31%	-0.50%	-2.02%	-6.04%
▼ Hong Kong Dollar	7.7509	-0.01%	0.00%	-0.02%	-0.52%
▼ Brazilian Real	5.1577	-1.41%	-3.27%	-10.34%	27.97%
▲ Argentine Peso	81.5693	0.14%	0.84%	3.36%	36.24%

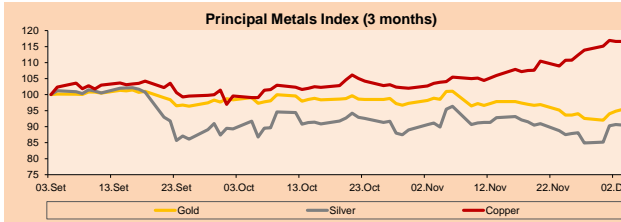
*Legend: Variation 1D: 1 Day; 5D: 5 Days; 1M: 1 Month; YTD: Var. % 31/12/19 to date



Base: 03/09/20=100
Source: Bloomberg

Commodities	Close	1 D*	5 D*	1 M*	YTD*
▲ Oro (US\$ Oz. T) (LME)	1,841.08	0.54%	1.39%	-3.57%	21.34%
▼ Plata (US\$ Oz. T) (LME)	24.07	-0.10%	2.76%	-0.66%	34.50%
▲ Cobre (US\$ TM) (LME)	7,666.50	0.00%	3.78%	12.63%	24.68%
▲ Zinc (US\$ TM) (LME)	2,725.50	0.00%	-0.64%	6.67%	19.57%
▲ Petróleo WTI (US\$ Barril) (NYM)	45.64	0.80%	-0.15%	20.14%	-18.54%
▼ Estano (US\$ TM) (LME)	18,802.62	0.00%	-0.20%	3.97%	9.46%
▼ Plomo (US\$ TM) (LME)	2,042.25	0.00%	0.94%	13.54%	6.73%
▲ Azúcar #11 (US\$ Libra) (NYB-ICE)	14.71	0.75%	-0.41%	-0.07%	2.29%
▲ Cacao (US\$ TM) (NYB-ICE)	2,651.00	0.49%	-2.68%	14.86%	9.00%
▲ Café Arabica (US\$ TM) (NYB-ICE)	120.05	0.80%	2.48%	13.20%	-14.28%

*Legend: Variación 1D: 1 Día; 5D: 5 Días; 1M: 1 Mes; YTD: Var. % 31/12/19 a la fecha



Base: 03/09/20=100
Source: Bloomberg

Capital Market Laboratory Coordinator: Economist Bruno Bellido
Collaboration: Piero Best, Luis Davila, Laura Delgado and Alonso Hernandez
email: pulsobursatil@ulima.edu.pe
facebook: www.facebook.com/pulsobursatil.ulima

LIMA

Stocks

Ticker	Currency	Price	1D*	5D*	30D*	YTD*	Frequency	Volume (US\$)	Beta	Dividend Yield (%)	Price Earning	Market Cap. (M US\$)	Economic Sector*	Index Weight
▲ ALICORC1 PE**	S/.	7.09	0.58%	3.95%	12.32%	2.05%	100.00%	2,502,824	0.75	3.53	16.31	1,685.86	Industrial	3.53%
▲ ATACOCB1 PE**	S/.	0.15	0.00%	0.00%	17.89%	-12.12%	40.00%	471	1.10	0.00	-	38.12	Mining	1.02%
- BACKUS1 PE**	S/.	19.50	0.00%	0.00%	2.63%	-31.58%	85.00%	382,566	0.52	0.00	8.82	8,288.44	Industrial	0.82%
▲ BAP PE**	US\$	164.20	2.00%	8.38%	36.83%	-22.79%	100.00%	2,897,904	1.57	5.36	-	15,497.58	Diverse	5.82%
▲ BVN PE**	US\$	12.00	1.78%	9.69%	-3.69%	-21.57%	95.00%	1,139,167	1.38	0.22	-	3,307.61	Mining	5.88%
▲ CASAGRC1 PE**	S/.	6.11	0.16%	17.50%	24.69%	101.65%	95.00%	109,873	0.57	1.75	10.97	143.20	Agricultural	1.31%
▲ BBVAC1 PE**	S/.	2.32	0.87%	3.57%	14.29%	-24.97%	100.00%	382,247	0.78	3.72	12.07	4,214.71	Finance	2.85%
- CORARE1 PE**	S/.	0.88	0.00%	1.15%	7.32%	-3.30%	95.00%	70,436	0.65	5.38	6.26	350.58	Industrial	1.72%
▲ CPACASC1 PE**	S/.	6.12	1.66%	1.32%	11.27%	-0.49%	100.00%	1,503,313	0.60	5.88	19.74	727.56	Industrial	2.38%
▲ CVERDEC1 PE**	US\$	21.10	0.52%	7.65%	11.05%	9.33%	100.00%	775,871	0.73	0.00	34.30	7,386.18	Mining	5.25%
- ENGEPEC1 PE**	S/.	2.01	0.00%	0.50%	0.50%	-12.61%	50.00%	10,585	0.49	0.00	10.10	1,587.62	Public Services	1.44%
▲ ENDISPC1**	S/.	5.26	1.15%	3.14%	1.15%	-28.44%	80.00%	185,587	0.46	0.39	9.93	934.57	Public Services	0.98%
▲ FERREYC1 PE**	S/.	1.73	1.76%	1.76%	1.76%	-21.00%	100.00%	974,539	0.71	4.43	34.73	469.65	Diverse	4.90%
▲ AENZAC1 PE**	S/.	1.75	1.16%	2.94%	25.90%	2.94%	100.00%	775,548	0.77	0.00	-	424.56	Diverse	4.05%
▲ IFS PE**	US\$	30.55	0.16%	4.62%	48.66%	-25.31%	95.00%	545,296	1.25	5.73	30.35	3,526.93	Diverse	7.22%
▲ INRETC1 PE**	US\$	36.00	0.56%	2.27%	5.57%	0.00%	100.00%	2,108,036	0.62	1.57	29.00	3,701.06	Diverse	5.28%
- LUSURC1 PE**	S/.	26.60	0.00%	-1.48%	2.27%	3.30%	90.00%	2,428,208	0.49	2.44	26.10	3,604.04	Public Services	1.81%
- MINSUR1 PE**	S/.	1.77	4.12%	4.12%	4.73%	13.46%	75.00%	14,716	0.74	0.00	-	1,419.84	Mining	3.09%
- PML PE**	US\$	0.09	0.00%	-1.09%	7.06%	62.50%	70.00%	14,822	1.29	0.00	-	24.04	Mining	2.12%
- RELAPAC1 PE**	S/.	0.06	0.00%	-3.13%	0.00%	-49.59%	90.00%	18,773	0.70	0.00	-	143.51	Industrial	2.12%
▲ SCCO PE**	US\$	60.65	0.48%	1.08%	12.44%	42.94%	90.00%	18,215	0.84	2.47	35.33	46,886.89	Mining	2.14%
▼ SIDERC1 PE**	S/.	0.80	-3.61%	0.00%	5.26%	-10.11%	90.00%	3,219	0.87	42.78	9.51	273.33	Industrial	1.43%
▲ TV PE**	US\$	0.16	6.16%	3.33%	47.62%	-10.40%	85.00%	21,189	1.52	0.00	-	153.31	Mining	2.93%
▲ UNACEMC1 PE**	S/.	1.52	1.33%	3.40%	16.92%	-24.00%	95.00%	353,354	0.88	1.71	73.96	768.94	Industrial	3.00%
▲ VOLCABC1 PE**	S/.	0.41	2.53%	-2.17%	7.98%	-8.76%	100.00%	400,980	0.89	0.00	-	1,775.79	Mining	5.90%
▲ NEXAPEC1 PE**	S/.	2.80	2.94%	0.00%	19.15%	-18.84%	50.00%	67,798	0.99	0.00	-	1,029.53	Mining	1.56%

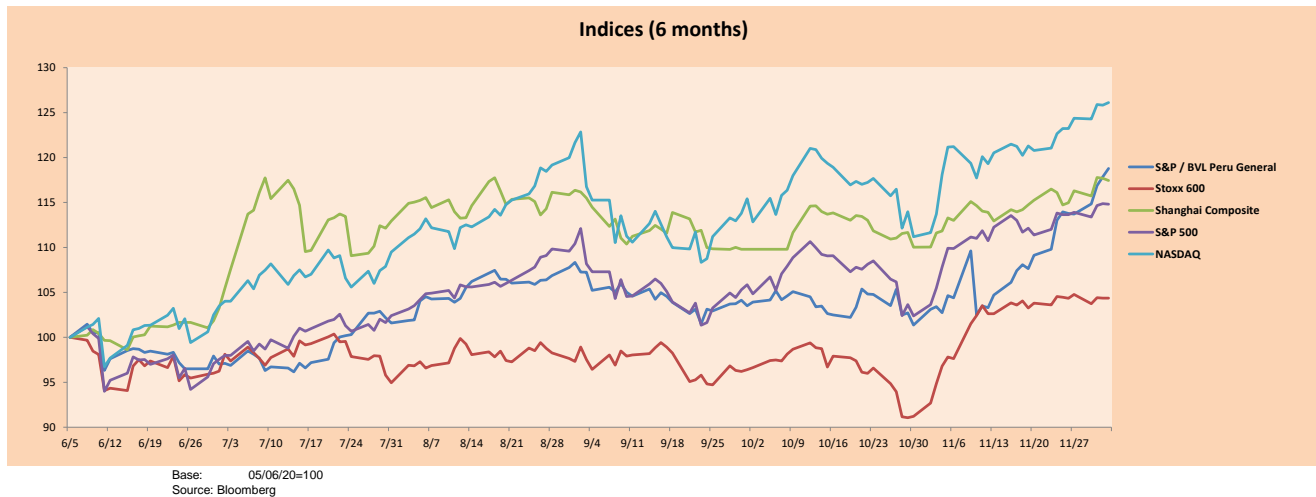
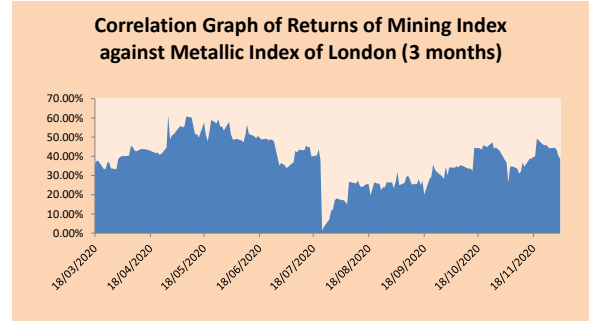
Quantity of shares: 26
 Source: Bloomberg, Economática
 * Bloomberg Industry Classification System
 ** PER is used in the stock market and original currency of the instrument
 *Legend: Variation 1D: 1 Day; 5D: 5 Days; 1M: 1 Month; YTD: Var.% 12/31/19 to date

Sectorial Indices

	Close	1D*	5D*	30D*	YTD*	Beta
▲ S&P/BVLMining	365.83	0.64%	3.46%	7.51%	20.08%	0.98
▲ S&P/BVLConsumer	1,040.73	0.01%	0.53%	3.41%	-8.72%	0.40
▲ S&P/BVLIndustrials	191.79	1.29%	2.72%	13.55%	-9.16%	0.59
▲ S&P/BVLFinancials	1,046.91	1.26%	7.45%	36.44%	-11.25%	1.60
▲ S&P/BVLConstruction	211.69	1.12%	3.14%	16.67%	-6.59%	0.57
▼ S&P/BVLPublicSvcs	617.17	-0.85%	-0.75%	1.18%	-5.27%	0.08
▼ S&P/BVLElectricUtil	602.51	-0.85%	-0.75%	1.18%	-5.27%	0.08

S&P/BVLConstructionTRPEN

*Legend: Variation 1D: 1 Day; 5D: 5 Days; 1M: 1 Month; YTD: Var.% 12/31/19 to date



Base: 05/06/20=100
 Source: Bloomberg

Capital Market Laboratory Coordinator: Economist Bruno Bellido
 Collaboration: Piero Best, Luis Davila, Laura Delgado and Alonso Hernández
 email: pulsohorsatil@ulima.edu.pe
 facebook: www.facebook.com/pulsohorsatil.ul

The content of this document is just for informational purposes. The information and opinions expressed should not be consider as recommendations for future decisions. Under any circumstances, the Capital Market Laboratory of University of Lima will be responsible for the use of the statements in this document.

SOVEREIGN RATING

RISK RATINGS

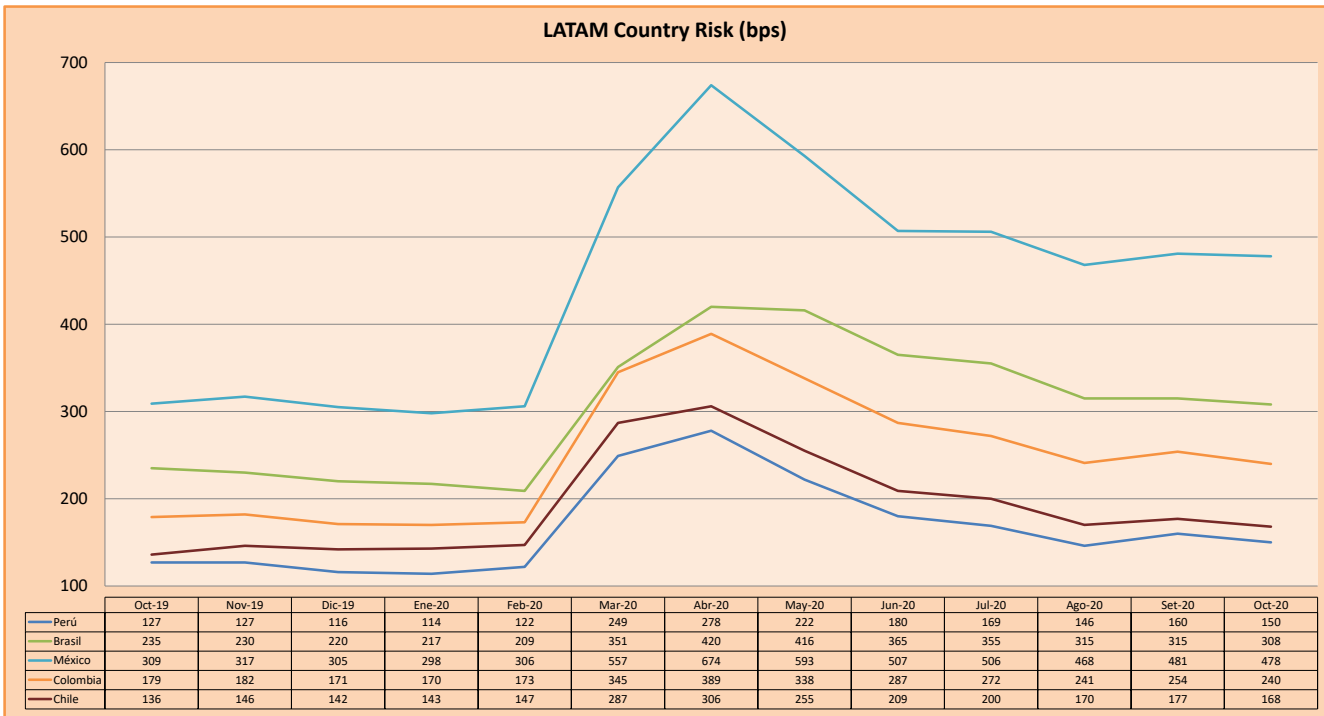
Moody's	S&P	Fitch		
Aaa	AAA	AAA	Prime	
Aa1	AA+	AA+	High credit quality	
Aa2	AA	AA		
Aa3	AA-	AA-		
A1	A+	A+	Medium-high grade, with low credit risk	
A2	A	A		
A3	A-	A-		
Baa1	BBB+	BBB+	Moderate Credit Risk	
Baa2	BBB	BBB		
Baa3	BBB-	BBB-		
Ba1	BB+	BB+	It has speculative elements and it is subject to substantial credit risk	
Ba2	BB	BB		
Ba3	BB-	BB-		
B1	B+	B+	It is considered speculative and it has high credit risk	
B2	B	B		
B3	B-	B-		
Caa1	CCC+	CCC	Bad credit conditions and it is subject to high credit risk	
Caa2	CCC			
Caa3	CCC-			
Ca	C	DDD	Very close to default or in default	
C	D			DD
				D

Source: Bloomberg

Latin America Credit Rating			
Clasificadora de riesgo			
Country	Moody's	Fitch	S&P
Peru	A3	BBB+	BBB+
México	Ba2	BB-	BB-
Venezuela	C	WD	SD
Brazil	Ba2	BB-	BB-
Colombia	Baa2	BBB-	BBB-
Chile	A1	A-	A+
Argentine	Ca	WD	CCC+
Panama	Baa1	BBB	BBB

Source: Bloomberg

LATAM Country Risk (bps)



Source: BCRP

Capital Market Laboratory Coordinator: Economist Bruno Bellido
Collaboration: Piero Best, Luis Davila, Laura Delgado and Alonso Hernández
email: pulsobursatil@ulima.edu.pe
facebook: www.facebook.com/pulsobursatil.ul