

PULSO BURSÁTIL

FACULTAD DE CIENCIAS EMPRESARIALES Y ECONÓMICAS
CARRERA DE ECONOMÍA
LABORATORIO DE MERCADO DE CAPITALES

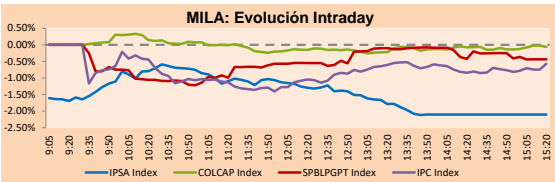


MILA

Lima, november 19, 2020

Main Indexes	Close	1 D	5 D	1 M	YTD	Cap. Burs. (US\$ bill)
▼ IPSA (Chile)	4,028.30	-1.96%	2.85%	9.68%	-13.74%	106.89
▼ IGPA (Chile)	20,140.53	-1.73%	2.75%	8.39%	-13.91%	130.83
▲ COLCAP (Colombia)	922.83	0.46%	0.93%	5.17%	-5.64%	4.98
▼ COLCAP (Colombia)	1,230.81	-0.30%	0.88%	3.66%	-25.96%	72.94
▼ S&P/BVL (Perú)*	18,553.16	-0.41%	4.20%	4.16%	-9.61%	93.52
▲ S&P/BVL SEL (Perú)	492.91	0.16%	4.57%	4.64%	-7.25%	76.32
▲ S&P/BVL LIMA 25	23,287.46	0.04%	5.19%	6.06%	-9.57%	92.70
▲ IPC (México)	41,868.82	-1.51%	3.17%	9.60%	-3.84%	266.86
▼ S&P MILA 40	464.05	-0.88%	5.18%	10.82%	-23.05%	214.38

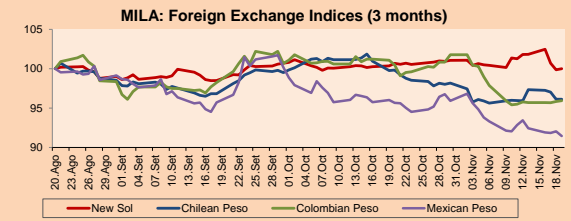
*Legend: Variation 1D: 1 day; 5D: 5 days; 1M: 1 Month; YTD: Var% 12/31/19 to date



Source: Bloomberg

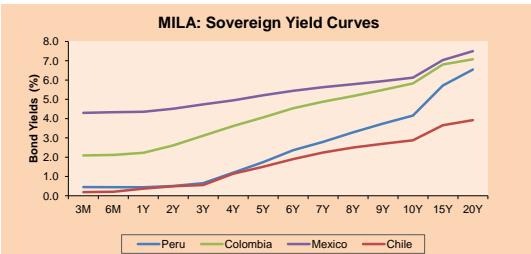
Currency	Price	1D*	5D*	30 D*	YTD*
▲ New Sol (PEN)	3.5775	0.13%	-1.78%	-0.62%	8.01%
▲ Chilean Peso (CLP)	757.70	0.00%	0.21%	-3.71%	0.79%
▲ Colombian Peso (COP)	3,649.12	0.12%	0.16%	-4.51%	11.35%
▼ Mexican Peso (MXN)	20.19	-0.65%	-2.14%	-4.41%	6.67%

*Legend: Variation 1D: 1 day; 5D: 5 days; 1M: 1 Month; YTD: Var% 12/31/19 to date



Base: 20/08/20=100
Source: Bloomberg

Fixed Income	Currency	Price	Bid Yield (%)	Ask Yield (%)	Duration
PERU 7.35 07/21/25	USD	128.176	1.17	1.09	4.03
PERU 4.125 08/25/27	USD	117.414	1.45	1.38	5.98
PERU 8.75 11/21/33	USD	170.134	2.46	2.39	8.98
PERU 6.55 03/14/37	USD	152.814	2.61	2.53	10.92
PERU 5.625 11/18/2050	USD	160.855	2.69	2.65	18.03
CHILE 2.25 10/30/22	USD	103.414	0.58	0.38	1.90
CHILE 3.125 01/21/26	USD	110.855	1.01	0.92	4.77
CHILE 3.625 10/30/42	USD	117.11	2.63	2.57	15.99
COLOM 11.85 03/09/28	USD	165.501	2.22	2.01	5.50
COLOM 10.375 01/28/33	USD	160.558	4.12	3.94	8.01
COLOM 7.375 08/18/37	USD	146.617	3.67	3.61	10.99
COLOM 6.125 01/18/41	USD	135.135	3.68	3.62	12.83
MEX 4 10/02/23	USD	135.135	3.677	3.618	12.83
MEX5.55 01/45	USD	128.116	3.78	3.75	14.61



Source: Bloomberg

Equity

Largest gains	Exchange	Currency	Price	▲ %
ITAU CORPBANCA	Chile	CLP	2.25	3.69
INRETAIL PERU CO	Peru	USD	35.00	2.94
VOLCAN CIA MIN-B	Peru	PEN	0.40	2.03
ARCA CONTINENTAL	Mexico	MXN	101.55	1.48
AGUAS ANDINAS-A	Chile	CLP	207.99	1.45

Per Turnover	Exchange	Amount (US\$)
SOQUIMICH-B	Chile	52,672,271
GRUPO F BANORT-O	Mexico	47,860,180
AMERICA MOVIL-L	Mexico	42,752,520
GRUPO MEXICO-B	Mexico	42,722,450
FOMENTO ECON-UBD	Mexico	36,754,783

Largest losses	Exchange	Currency	Price	▼ %
CENCOSUD SHOPPIN	Chile	CLP	1204	-4.29
ENTEL	Chile	CLP	4700	-4.06
GRUPO FIN INB-O	Mexico	MXN	19.07	-3.98
ENEL CHILE SA	Chile	CLP	53.67	-3.73
CENCOSUD SA	Chile	CLP	1310	-3.68

Per Volume	Exchange	Volume
ITAU CORPBANCA	Chile	1,146,549,362
BANCO DE CHILE	Chile	132,574,887
BANCO SANTANDER	Chile	112,627,321
AMERICA MOVIL-L	Mexico	60,528,358
AGUAS ANDINAS-A	Chile	55,429,775

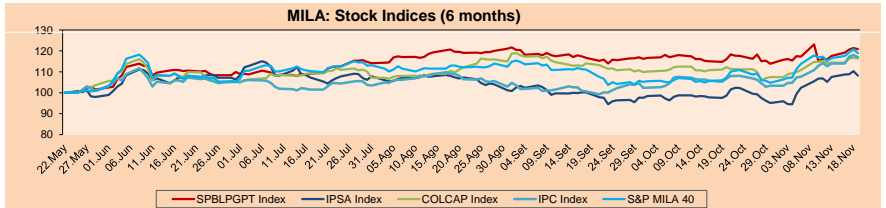
MILA

Peru: The General Index of the BVL closed the session today with a negative result of -0.41%. The index maintains an annual accumulated negative trend of -9.61% in local currency, while the adjusted return in dollars amounts to -16.31%. Then, the S&P / BVL Peru SEL varied by + 0.16% while the S&P / BVL LIMA 25 by + 0.04%. PEN's position reached 5 / 3.5775. Headline: Peru's country risk rose two basis points and closed at 1.18 percentage points.

Chile: The IPSA index closed the day with a negative return of -1.96%. The sectors most affected during the day were Staples (-2.44%) and Real Estate (-2.29%). The worst performing stocks were Cencosud Shopping SA (-4.29%) and Entel Chile SA (-4.06%). Headline: Chile's SQM boosts lithium sales amid falling earnings and promises expansion by 2023.

Colombia: The COLCAP Index closed the day with a negative return of -0.30%. The sectors most affected in the session were Public Services (-0.83%) and Materials (-0.69%). The most performing stocks were Banco de Bogotá SA (-1.85%) and Cementos Argos SA (-1.78%). Headline: Tax collection in Colombia falls in October, but exceeds the goal for the month.

Mexico: The IPC index closed the day with a negative return of -0.91%. The sectors most affected during the day were Public Services (-2.94%) and Materials (-2.04%). The worst performing stocks were Grupo Financiero Inbursa SA (-3.98%) and Grupo Bimbo SAB de CV (-3.60%). Headline: Mexico will not lose investment grade for at least two years: HSBC.

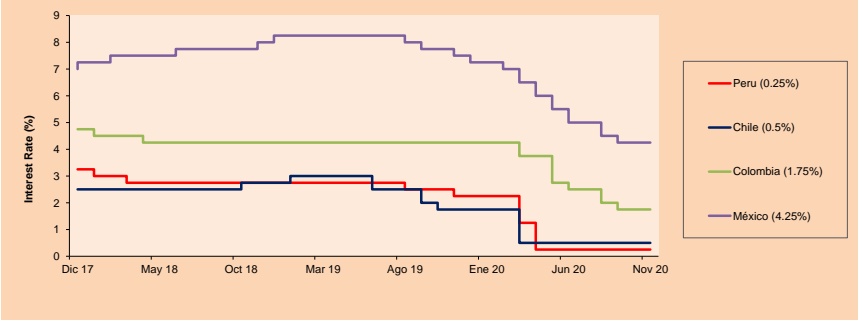


Base: 25/05/20=100
Source: Bloomberg

ETFs

ETFs	Curr.	Close	1D	5D	30 D	YTD	Exchange
▼ iShares MSCI All Peru Caped Index Fund	USD	31.48	-0.88%	5.18%	5.85%	-15.03%	NYSE Arca
▼ iShares MSCI All Chile Caped Index Fund	USD	27.33	-1.12%	3.41%	12.28%	-18.00%	Cboe BZX
▲ Global X MSCI Colombia	USD	9.4171	0.08%	3.71%	10.92%	-32.25%	NYSE Arca
▲ iShares MSCI Mexico Capped	USD	40.72	-0.29%	6.62%	14.22%	-9.57%	NYSE Arca
▲ iShares FTSE Emerging Markets	USD	48.79	0.16%	2.37%	6.23%	8.74%	NYSE Arca
▲ Vanguard FTSE Emerging Markets	USD	47.57	0.25%	2.21%	5.59%	6.97%	NYSE Arca
▲ iShares Core MSCI Emerging Markets	USD	58.51	0.21%	2.54%	6.42%	8.84%	NYSE Arca
▲ iShares JP Morgan Emerging Markets Bonds	USD	59.41	0.08%	1.45%	5.26%	1.28%	Cboe BZX
▲ Morgan Stanley Emerging Markets Domestic	USD	6.08	0.33%	2.88%	6.48%	-13.02%	New York

MILA: Policy Rate



Source: Bloomberg

Capital Market Laboratory Coordinator: Economist Bruno Bellido
Collaboration: Piero Best, Luis Davila, Laura Delgado and Alonso Hernández
email: pulsobursatil@ulima.edu.pe
facebook: www.facebook.com/pulsobursatil.ul

The content of this document is just for informational purposes. The information and opinions expressed should not be considered as recommendations for future decisions. Under any circumstances, the Capital Market Laboratory of University of Lima will be responsible for the use of the statements in this document.

PULSO BURSÁTIL

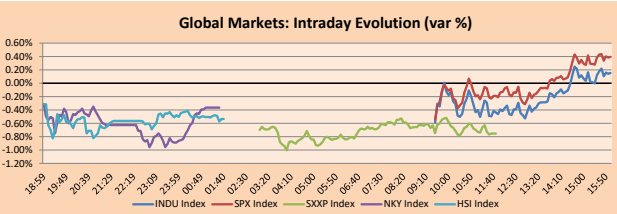
FACULTAD DE CIENCIAS EMPRESARIALES Y ECONÓMICAS
CARRERA DE ECONOMÍA
LABORATORIO DE MERCADO DE CAPITALES



WORLD

Main Indices	Close	1 D*	5 D*	1 M*	YTD*	Market Cap. (US\$ Mill.)
▲ Dow Jones (USA)	29,483.23	0.15%	1.39%	4.15%	3.31%	9,093,381
▲ Standard & Poor's 500 (EEUU)	3,581.87	0.39%	1.27%	4.03%	10.87%	30,998,174
▲ NASDAQ Composite (USA)	11,904.71	0.87%	1.67%	3.37%	32.68%	19,228,821
▼ Stoxx EUROPE 600 (Europe)	387.60	-0.75%	0.63%	6.04%	-6.79%	8,926,848
▼ DAX (Germany)	13,086.16	-0.88%	0.25%	2.74%	-1.23%	1,006,929
▼ FTSE 100 (United Kingdom)	6,334.35	-0.80%	-0.07%	7.56%	-16.02%	1,313,965
▼ CAC 40 (France)	5,474.66	-0.67%	2.09%	11.06%	-8.42%	1,478,483
▼ IBEX 35 (Spain)	7,930.20	-0.84%	2.64%	14.48%	-16.95%	436,289
▼ MSCI AC Asia Pacific Index	187.87	-0.28%	1.58%	7.04%	10.09%	23,842,002
▼ HANG SENG (Hong Kong)	26,356.97	-0.71%	0.72%	7.98%	-5.89%	3,663,420
▲ SHANGHAI SEC Comp. (China)	3,363.09	0.47%	0.73%	1.14%	10.36%	6,204,358
▲ NIKKEI 225 (Japan)	25,634.34	-0.36%	0.44%	8.06%	7.65%	3,736,430
▲ S&P / ASX 200 (Australia)	6,547.23	0.25%	2.01%	5.90%	-2.01%	1,502,383
▲ KOSPI (South Korea)	2,547.42	-0.91%	2.47%	8.18%	16.09%	1,508,335

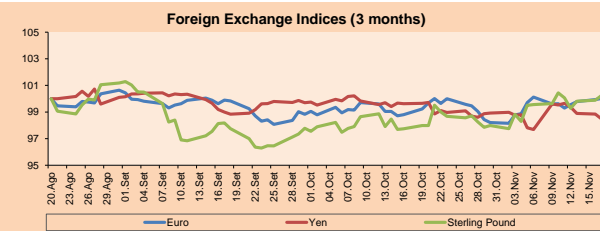
*Legend: Variation 1D: 1 Day; 5D: 5 Days; 1M: 1 Month; YTD: Var. % 12/31/19 to date



Source: Bloomberg

Currency	Price	1 D*	5 D*	1 M*	YTD*
▲ Euro	1.1875	0.19%	0.58%	0.45%	5.90%
▲ Yen	103.7400	-0.08%	-1.32%	-1.67%	-4.48%
▼ Sterling Pound	1.3261	-0.09%	1.09%	2.42%	0.03%
▼ Yuan	6.5840	0.36%	-0.44%	-1.39%	-5.45%
▼ Hong Kong Dollar	7.7532	0.01%	-0.01%	0.04%	-0.49%
▼ Brazilian Real	5.3087	-1.01%	-2.73%	-5.30%	31.72%
▲ Argentine Peso	80.2762	0.15%	0.89%	3.36%	34.08%

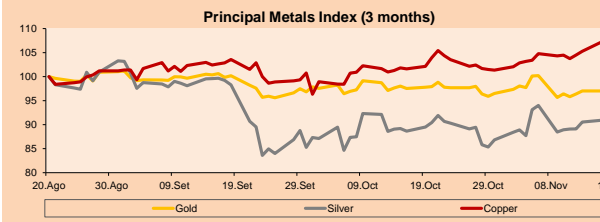
*Legend: Variation 1D: 1 Day; 5D: 5 Days; 1M: 1 Month; YTD: Var. % 12/31/19 to date



Base: 20/08/20=100
Source: Bloomberg

Commodities	Close	1 D*	5 D*	1 M*	YTD*
▼ Oro (US\$ Oz. T) (LME)	1,866.54	-0.30%	-0.95%	-2.12%	23.02%
▼ Plata (US\$ Oz. T) (LME)	24.05	-1.17%	-0.95%	-2.39%	34.73%
▲ Cobres (US\$ TM) (LME)	7,069.50	0.00%	2.22%	2.77%	14.97%
▲ Zinc (US\$ TM) (LME)	2,742.00	0.00%	5.05%	9.16%	20.29%
▼ Petróleo WTI (US\$ Barril) (NYM)	41.74	-0.19%	1.51%	0.10%	-26.95%
- Estafío (US\$ TM) (LME)	18,856.00	0.00%	2.90%	1.12%	9.77%
- Plomo (US\$ TM) (LME)	1,931.50	0.00%	2.64%	10.50%	0.94%
- Alúmin #11 (US\$ Libra) (NYB-ICE)	15.28	-1.10%	2.41%	5.09%	6.26%
▲ Cacao (US\$ TM) (NYB-ICE)	2,665.00	3.29%	13.12%	11.88%	9.58%
▲ Café Arábica (US\$ TM) (NYB-ICE)	123.20	0.28%	9.07%	14.29%	-12.03%

*Lenda: Variación 1D: 1 Día; 5D: 5 Días; 1M: 1 Mes; YTD: Var. % 31/12/19 a la fecha



Base: 20/08/20=100
Source: Bloomberg

Equity

Germany (Stocks from DAX Index)

Largest gains	Curr.	Price	▲ %	Exchange	Largest losses	Curr.	Price	▼ %	Exchange
VNA GY	EUR	57.96	1.36	Xetra	MTX GY	EUR	196	-2.63	Xetra
S&P GY	EUR	34.06	1.01	Xetra	HEI GY	EUR	58.38	-2.60	Xetra
RWE GY	EUR	27.06	0.99	Xetra	BAYN GY	EUR	46.395	-2.26	Xetra
IFX GY	EUR	39.1	0.41	Xetra	ALV GY	EUR	194.84	-1.99	Xetra

Europe (Stocks from STOXX EUROPE 600)

Largest gains	Curr.	Price	▲ %	Exchange	Largest losses	Curr.	Price	▼ %	Exchange
HFG GY	EUR	47.48	6.55	Xetra	JMAT LN	Gbp	2408	-5.57	Londres
DHER GY	EUR	99.5	3.73	Xetra	EVD GY	EUR	49.08	-5.16	Xetra
ROCKB DC	DKK	2620	3.64	Copenhagen	SIG LN	Gbp	242.8	-5.01	Londres
CRDALN	Gbp	6248	3.62	Londres	FTI FP	EUR	6.908	-4.82	EN Paris

Global Overview:

United States:

US markets closed today's session with positive returns, driven by developments regarding fiscal stimulus after Senate Minority Leader Chuck Schumer said Senate Majority Leader Mitch McConnell agreed to reactivate talks to develop a new tax relief package. Record numbers of infections have caused COVID hospitalizations to skyrocket by 50% and have caused schools and businesses to close once again, thwarting the recovery of the world's largest economy from the deepest recession since the Great Depression. During the session, rising COVID-19 infection rates steered investors toward market-leading growth stocks that have shown resilience to the pandemic, thus, of the top 11 sectors in the S&P 500, the energy index SPNY + 1.53% and SPLRCT technology + 0.84% were the ones that grew the most. In corporate stocks, L Brands inc rose +17.70% after posting better-than-expected quarterly results and a 56% increase in same-store sales, while Tesla held up for the third day in a row at +2.60%. Thus, the main indexes S&P 500 + 0.39%, DJIA + 0.15% and NASDAQ + 0.87% closed higher.

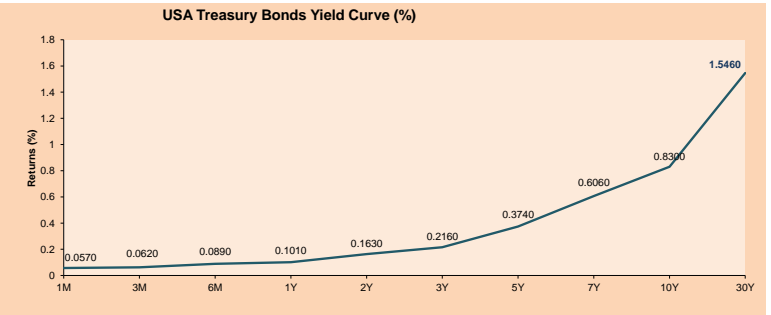
Europe:

European markets ended today's session with negative variations, as fears of the resurgence and closure reignite, leaving behind the encouraging news about the vaccine. In the STOXX 600, travel and leisure stocks were the biggest losers, declining 1.7%. Sentiment was not elevated despite reports of the vaccine produced by the University of Oxford and AstraZeneca showing that it is safe and triggers a similar immune response among all adults. The news of authorities seeking to re-impose stay-at-home orders, curfews and public safety measures, such as the closure of non-essential businesses in some cities, weighed more heavily on investors, according to CNBC. It is feared that if the authorities fail to stop the spread of the virus, widespread containment will have to be re-imposed. On the other hand, Christine Lagarde, president of the European Central Bank, announced that it is very possible that inflation in the euro area will continue to be negative until the beginning of 2021. Thus, the STOXX 600 -0.75%, CAC 40 -0.67%, DAX -0.88%, FTSE 100 -0.8% and FTSE MIB -0.4% finished with a negative sign, among other indices.

Asia:

Asian markets closed today's session with mixed results as new daily contagion records are hit, fueling investor uncertainty. Japan reached an all-time high of 2,179 daily coronavirus infections amid a worrying increase in the number of cases in a country that would have escaped the worst of the pandemic and is planning to run the Olympics next year. This last factor is a potential risk and would concern investors. On the other hand, in China, shares closed higher, led by the consumer sector. According to a report by the state broadcaster CCTV, citing a meeting of the country's cabinet, China will expand automobile consumption and consumption in rural areas. Added to this, President Xi Jinping declared that tariffs will continue to be reduced and imports of high-quality goods and services will continue to be expanded. In corporate matters, in Australia, financial stocks extended their gains to the fourth day and reached their highest level in more than eight months, with "Big Four" banks rising between 1.2% and 2.3%. Thus, the main indexes Nikkei 225 -0.36%, Hang Seng -0.71%, ASX 200 + 0.19%, CSI 300 + 0.74% and Shanghai Composite + 0.47% closed with mixed results.

ETFs	Curr.	Close	1D	5D	30D	YTD	Exchange
SPDR S&P 500 ETF TRUST	USD	357.78	0.42%	1.29%	4.19%	11.16%	NYSE Arca
ISHARES MSCI EMERGING MARKET	USD	48.79	0.16%	2.37%	6.23%	8.74%	NYSE Arca
ISHARES IBOXX HIGH YLD CORP	USD	86.08	0.34%	1.09%	1.71%	-2.12%	NYSE Arca
FINANCIAL SELECT SECTOR SPDR	USD	27.42	0.33%	3.12%	10.52%	-10.92%	NYSE Arca
VANECK GOLD MINERS	USD	35.52	-0.84%	-5.25%	-9.98%	21.31%	NYSE Arca
ISHARES RUSSELL 2000 ETF	USD	177.31	0.77%	4.31%	10.29%	7.03%	NYSE Arca
SPDR GOLD SHARES	USD	175.16	-0.19%	-0.45%	-2.28%	22.58%	NYSE Arca
ISHARES 20+ YEAR TREASURY BO	USD	160.09	0.51%	1.09%	0.53%	18.17%	NASDAQ GM
INVESCO QQQ TRUST SERIES 1	USD	292.38	0.78%	1.38%	2.80%	37.52%	NASDAQ GM
ISHARES NASDAQ BIOTECHNOLOGY	USD	138.09	0.12%	-1.03%	1.14%	14.59%	NASDAQ GM
ENERGY SELECT SECTOR SPDR	USD	36.00	1.64%	10.13%	20.40%	-40.04%	NYSE Arca
PROSHARES ULTRA VIX ST FUTUR	USD	12.60	-2.17%	-12.32%	-23.61%	-2.25%	NYSE Arca
UNITED STATES OIL FUND LP	USD	29.09	0.31%	1.50%	0.14%	-71.61%	NYSE Arca
ISHARES MSCI BRAZIL ETF	USD	32.91	1.67%	7.06%	12.01%	-30.64%	NYSE Arca
SPDR S&P OIL & GAS EXP & PR	USD	52.57	2.42%	13.44%	20.63%	-44.55%	NYSE Arca
UTILITIES SELECT SECTOR SPDR	USD	63.53	-1.00%	-2.92%	-0.49%	-1.69%	NYSE Arca
ISHARES US REAL ESTATE ETF	USD	85.32	0.20%	1.87%	5.41%	-8.34%	NYSE Arca
SPDR S&P BIOTECH ETF	USD	125.07	0.59%	1.08%	7.15%	31.50%	NYSE Arca
ISHARES IBOXX INVESTMENT GRA	USD	137.69	0.58%	1.54%	2.14%	7.60%	NYSE Arca
ISHARES JP MORGAN VIX ST EMERGI	USD	114.04	0.23%	0.57%	2.24%	-0.45%	NASDAQ GM
REAL ESTATE SELECT SECT SPDR	USD	37.19	0.16%	1.42%	3.94%	-3.83%	NYSE Arca
ISHARES CHINA LARGE-CAP ETF	USD	47.12	-0.06%	0.04%	6.41%	8.00%	NYSE Arca
CONSUMER STAPLES SPDR	USD	66.92	0.27%	0.47%	2.58%	6.26%	NYSE Arca
VANECK JR GOLD MINERS	USD	51.55	-0.15%	-3.63%	-10.10%	21.98%	NYSE Arca
SPDR BBG BARC HIGH YIELD BND	USD	107.27	0.36%	1.10%	1.91%	-2.07%	NYSE Arca
VANGUARD REAL ESTATE ETF	USD	85.07	0.39%	2.30%	6.16%	-8.32%	NYSE Arca
GRAYSCALE BITCOIN TRUST BTC	USD	20.10	2.34%	10.20%	51.07%	145.42%	OTC US



Source: Bloomberg

Capital Market Laboratory Coordinator: Economist Bruno Bellido
Collaboration: Piero Best, Luis Davila, Laura Delgado and Alonso Hernández
email: pulsoBursatil@ulima.edu.pe
facebook: www.facebook.com/pulsoBursatil.u

The content of this document is just for informational purposes. The information and opinions expressed should not be considered as recommendations for future decisions. Under any circumstances, the Capital Market Laboratory of University of Lima will be responsible for the use of the statements in this document.

LIMA

Stocks

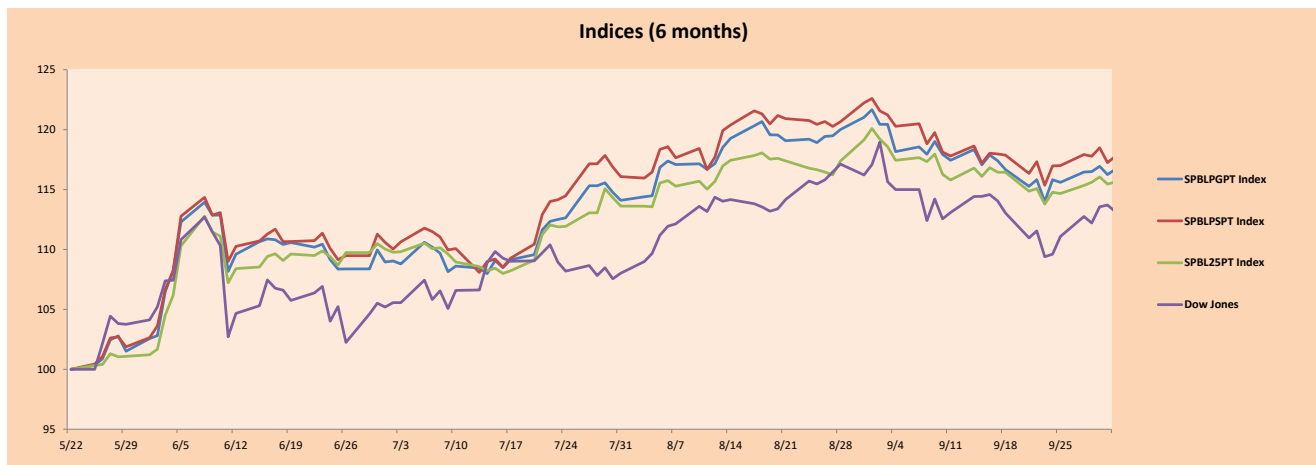
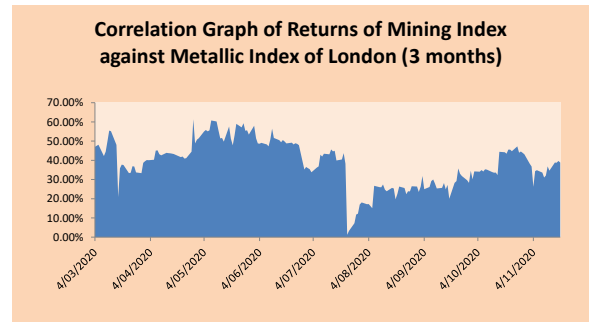
Ticker	Currency	Price	1D*	5D*	30D*	YTD*	Frequency	Volume (US\$)	Beta	Dividend Yield (%)	Price Earning	Market Cap. (M US\$)	Economic Sector*	Index Weight
▲ ALICORC1 PE**	S/.	7.15	0.46%	0.93%	5.17%	-5.64%	100.00%	123,671	0.75	3.50	16.44	1,705.59	Industrial	3.53%
▲ ATACOCB1 PE**	S/.	0.13	4.84%	4.84%	1.56%	-21.21%	45.00%	19,831	1.05	0.00	-	34.33	Mining	1.02%
- BACKUSI1 PE**	S/.	19.60	0.00%	-1.01%	3.21%	-31.23%	95.00%	2,750	0.52	3.34	5.78	8,343.16	Industrial	0.82%
▼ BAP PE**	US\$	133.14	-1.74%	11.54%	10.49%	-37.40%	100.00%	101,836	1.55	6.61	-	12,566.06	Diverse	5.82%
▼ BVN PE**	US\$	11.39	-0.96%	-0.96%	-9.60%	-25.56%	100.00%	267,263	1.45	0.23	-	3,139.48	Mining	5.88%
▲ CASAGRC1 PE**	S/.	5.40	3.85%	12.50%	25.58%	78.22%	90.00%	55,209	0.54	1.99	9.70	127.15	Agricultural	1.31%
- BBVAC1 PE**	S/.	2.15	0.47%	-3.15%	-0.60%	-30.47%	95.00%	344,185	0.70	4.01	11.19	3,923.89	Finance	2.85%
- CORARE11 PE**	S/.	0.90	0.00%	11.11%	21.62%	-1.10%	95.00%	13,866	0.71	8.09	6.40	326.99	Industrial	1.72%
▲ CPACASC1 PE**	S/.	6.15	2.50%	11.21%	13.89%	0.00%	95.00%	92,637	0.61	5.85	19.84	734.34	Industrial	2.38%
- CVERDEC1 PE**	US\$	18.60	0.00%	-1.59%	-0.53%	-3.63%	100.00%	106,150	0.73	0.00	44.90	6,511.04	Mining	5.25%
▲ ENGEPEC1 PE**	S/.	2.00	2.04%	0.00%	0.00%	-13.04%	60.00%	5,282	0.50	12.61	10.05	1,587.00	Public Services	1.44%
▲ ENDISPC1**	S/.	5.08	0.59%	-0.20%	-0.39%	-30.88%	60.00%	26,775	0.46	0.40	9.59	906.75	Public Services	0.98%
▼ FERREYC1 PE**	S/.	1.72	-1.71%	-0.58%	1.18%	-21.46%	100.00%	115,081	0.72	4.46	34.53	469.09	Diverse	4.90%
- AENZAC1 PE**	S/.	1.58	0.00%	1.28%	12.86%	-7.06%	90.00%	41,913	0.73	0.00	-	385.08	Diverse	4.05%
▼ IFS PE**	US\$	25.10	-1.95%	22.38%	10.57%	-38.63%	100.00%	282,235	1.28	6.97	23.78	2,897.74	Diverse	7.22%
▲ INRETC1 PE**	US\$	35.00	2.94%	5.90%	13.09%	-2.78%	95.00%	2,352,668	0.61	1.61	28.06	3,598.26	Diverse	5.28%
▲ LUSURC1 PE**	S/.	26.20	0.77%	0.77%	-4.55%	1.75%	90.00%	189,835	0.51	2.48	22.22	3,566.21	Public Services	1.81%
- MINSUR1 PE**	S/.	1.67	0.00%	1.21%	0.00%	7.05%	60.00%	7,529	0.74	0.00	-	1,345.80	Mining	3.09%
- PML PE**	US\$	0.09	0.00%	9.76%	5.88%	60.71%	55.00%	18,000	1.27	0.00	-	23.77	Mining	2.12%
▼ RELAPAC1 PE**	S/.	0.07	-2.90%	3.08%	3.08%	-45.53%	55.00%	7,403	0.72	0.00	-	155.80	Industrial	2.12%
▼ SCCO PE**	US\$	55.60	-0.82%	3.29%	13.47%	31.04%	90.00%	28,239	0.84	2.70	32.39	42,982.87	Mining	2.14%
- SIDERC1 PE**	S/.	0.80	0.00%	3.90%	19.40%	-10.11%	100.00%	2,236	0.87	42.78	9.51	274.59	Industrial	1.43%
▼ TV PE**	US\$	0.15	-2.58%	25.83%	39.81%	-12.72%	90.00%	465,698	1.46	0.00	-	121.19	Mining	2.93%
- UNACEMC1 PE**	S/.	1.50	0.00%	12.78%	8.70%	-25.00%	95.00%	54,614	0.89	1.73	72.99	762.32	Industrial	3.00%
▲ VOLCABC1 PE**	S/.	0.40	2.03%	6.33%	4.68%	-9.44%	100.00%	300,515	0.85	0.00	-	1,781.93	Mining	5.90%
- NEXAPEC1 PE**	S/.	2.60	0.00%	1.17%	0.00%	-24.64%	50.00%	13,765	1.00	0.00	-	961.05	Mining	1.56%

Quantity of shares: 26
 Source: Bloomberg, Economática
 * Bloomberg Industry Classification System
 ** PER is used in the stock market and original currency of the instrument
 *Legend: Variation 1D: 1 Day; 5D: 5 Days; 1M: 1 Month; YTD: Var.% 12/31/18 to date

Sectorial Indices

	Close	1D*	5D*	30D*	YTD*	Beta
▼ Mining Index	338.59	-0.59%	0.26%	3.95%	11.14%	1.01
▲ Consumer Index	1,028.21	1.35%	2.62%	4.02%	-9.82%	0.40
▲ Industrial Index	186.73	0.02%	7.23%	10.24%	-11.55%	0.58
▼ Banking and Financial Index	852.64	-1.49%	9.86%	9.43%	-27.72%	1.59
▲ Construction Index	204.24	0.74%	8.60%	12.17%	-9.88%	0.57
▲ Services Index	613.28	0.73%	0.79%	-1.97%	-5.87%	0.08
▲ Electric Index	598.72	0.73%	0.79%	-1.96%	-5.87%	0.08

*Legend: Variation 1D: 1 Day; 5D: 5 Days; 1M: 1 Month; YTD: Var.% 12/31/19 to date



Base: 22/05/20=100
 Source: Bloomberg

Capital Market Laboratory Coordinator: Economist Bruno Bellido
 Collaboration: Piero Best, Luis Davila, Laura Delgado and Alonso Hernández
 email: pulsohorsatil@ulima.edu.pe
 facebook: www.facebook.com/pulsohorsatil.ul

The content of this document is just for informational purposes. The information and opinions expressed should not be consider as recommendations for future decisions. Under any circumstances, the Capital Market Laboratory of University of Lima will be responsible for the use of the statements in this document.

SOVEREIGN RATING

RISK RATINGS

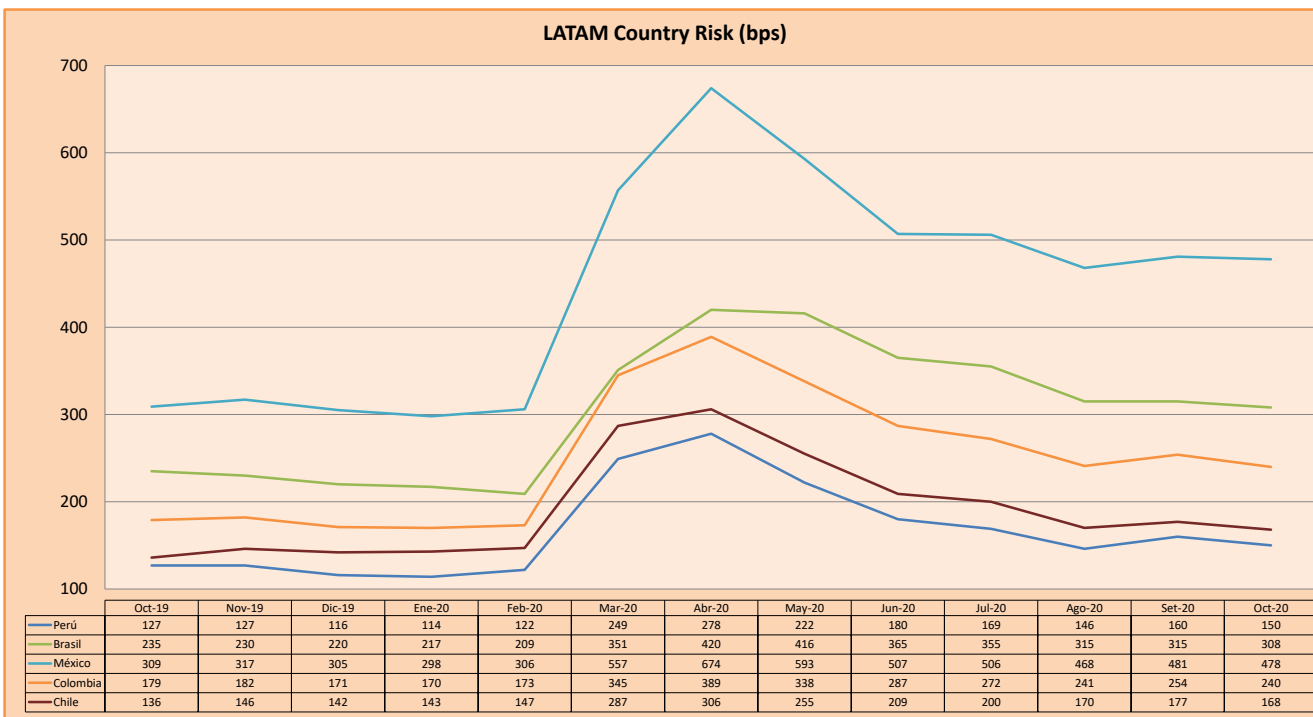
Moody's	S&P	Fitch	
Aaa	AAA	AAA	Prime
Aa1	AA+	AA+	High credit quality
Aa2	AA	AA	
Aa3	AA-	AA-	
A1	A+	A+	Medium-high grade, with low credit risk
A2	A	A	
A3	A-	A-	
Baa1	BBB+	BBB+	Moderate Credit Risk
Baa2	BBB	BBB	
Baa3	BBB-	BBB-	
Ba1	BB+	BB+	It has speculative elements and it is subject to substantial credit risk
Ba2	BB	BB	
Ba3	BB-	BB-	
B1	B+	B+	It is considered speculative and it has high credit risk
B2	B	B	
B3	B-	B-	
Caa1	CCC+		Bad credit conditions and it is subject to high credit risk
Caa2	CCC		
Caa3	CCC-	CCC	
Ca	C		Very close to default or in default
		DDD	
C	D	DD D	

Source: Bloomberg

Latin America Credit Rating			
Clasificadora de riesgo			
Country	Moody's	Fitch	S&P
Peru	A3	BBB+	BBB+
México	Ba2	BB-	BB-
Venezuela	C	WD	SD
Brazil	Ba2	BB-	BB-
Colombia	Baa2	BBB-	BBB-
Chile	A1	A-	A+
Argentine	Ca	WD	CCC+
Panama	Baa1	BBB	BBB+

Source: Bloomberg

LATAM Country Risk (bps)



Source: BCRP

Capital Market Laboratory Coordinator: Economist Bruno Bellido
Collaboration: Piero Best, Luis Davila, Laura Delgado and Alonso Hernández
email: pulsobursatil@ulima.edu.pe
facebook: www.facebook.com/pulsobursatil.ul