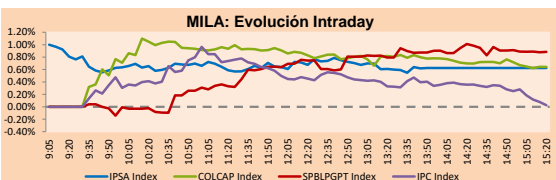


## MILA

Lima, February 5, 2021

Main Indexes	Close	1 D	5 D	1 M	YTD	Cap. Burs. (US\$ bill)
▲ IPSA (Chile)	4,449.45	0.85%	3.75%	-2.42%	6.52%	118.70
▲ IGPA (Chile)	22,478.25	0.78%	3.68%	-1.47%	7.00%	147.71
▲ COLSC (Colombia)	1,072.19	1.01%	1.41%	0.32%	1.25%	5.74
▲ COLCAP (Colombia)	1,370.46	0.80%	1.66%	-5.69%	-4.69%	81.10
▲ S&P/BVL (Perú)*	21,783.37	1.07%	3.19%	0.73%	4.62%	113.47
▲ S&P/BVL SEL (Perú)	587.07	1.19%	3.44%	1.76%	6.47%	93.34
▲ S&P/BVL LIMA 25	28,029.19	1.16%	3.71%	5.28%	11.23%	112.51
▼ IPC (México)	44,145.70	-0.05%	-0.30%	-5.53%	0.18%	280.38
▲ S&P MILA 40	529.63	0.83%	3.46%	-5.85%	-0.94%	5,631.98

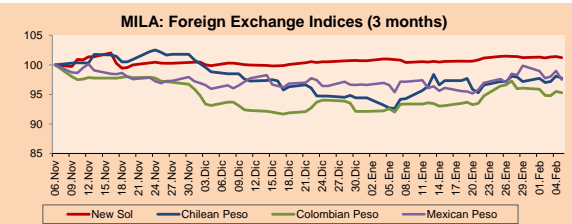
\*Legend: Variation 1D: 1 day; 5D: 5 days; 1M: 1 Month; YTD: Var% 12/31/19 to date



Source: Bloomberg

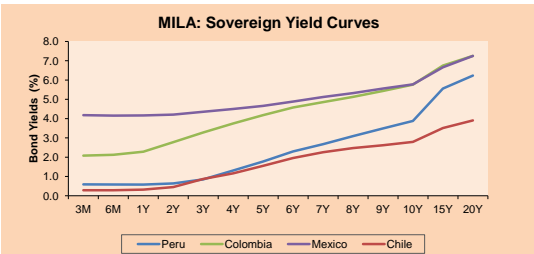
Currency	Price	1D*	5D*	30 D*	YTD*
▼ New Sol (PEN)	3,6378	-0.15%	0.02%	0.35%	0.55%
▼ Chilean Peso (CLP)	737.05	-0.34%	0.62%	5.56%	3.55%
▼ Colombian Peso (COP)	3,547.25	-0.23%	-0.80%	3.57%	3.43%
▼ Mexican Peso (MXN)	20.09	-1.51%	-2.37%	2.23%	0.87%

\*Legend: Variation 1D: 1 day; 5D: 5 days; 1M: 1 Month; YTD: Var% 12/31/19 to date



Base: 06/11/20=100  
Source: Bloomberg

Fixed Income	Currency	Price	Bid Yield (%)	Ask Yield (%)	Duration
PERU 7.35 07/21/25	USD	126.998	1.16	1.07	3.92
PERU 4.125 08/25/27	USD	115.956	1.59	1.52	5.77
PERU 8.75 11/21/33	USD	166.079	2.67	2.59	8.99
PERU 6.55 03/14/37	USD	146.621	2.93	2.88	10.65
PERU 5.625 11/18/2050	USD	147.837	3.16	3.12	17.32
CHILE 2.25 10/30/22	USD	103.388	0.40	0.16	1.68
CHILE 3.125 01/21/26	USD	110.597	0.99	0.87	4.63
CHILE 3.625 10/30/42	USD	111.798	2.91	2.87	15.71
COLOM 11.85 03/09/28	USD	162.452	2.37	2.15	5.28
COLOM 10.375 01/28/33	USD	161.684	4.00	3.77	8.10
COLOM 7.375 09/18/37	USD	140.408	4.05	3.98	10.68
COLOM 6.125 01/18/41	USD	128.233	4.08	4.02	12.75
MEX 4 10/02/23	USD	128.233	4.079	4.017	12.75
MEX5.55 01/45	USD	124.38	3.99	3.94	14.60



Source: Bloomberg

### Equity

Largest gains	Exchange	Currency	Price	▲ %
COLBUN SA	Chile	CLP	136.50	4.60
FIBRA TERRA	Mexico	MXN	29.79	3.08
CMPC	Chile	CLP	2060.00	3.00
SOUTHERN COPPER	Peru	USD	71.58	2.98
VOLCAN CIA MIN-B	Peru	PEN	0.72	2.86

Per Turnover	Exchange	Amount (US\$)
SOQUIMICH-B	Chile	271,417,136
WALMART DE MEXIC	Mexico	33,471,310
GRUPO MEXICO-B	Mexico	33,015,179
GRUPO F BANORT-O	Mexico	29,204,170
FOMENTO ECON-UBD	Mexico	18,588,061

Largest losses	Exchange	Currency	Price	▼ %
ORBIA ADVANCE CO	Mexico	MXN	43.51	-3.10
CENCOSUD SHOPPIN	Chile	CLP	1190	-2.86
KIMBERLY-CLA M-A	Mexico	MXN	35.06	-2.18
BECLE SAB DE CV	Mexico	MXN	43.73	-2.08
AMERICA MOVIL-L	Mexico	MXN	13.69	-2.00

Per Volume	Exchange	Volume
ITAU CORPBANCA	Chile	232,320,712
BANCO SANTANDER	Chile	112,348,249
BANCO DE CHILE	Chile	51,027,158
ENEL CHILE SA	Chile	39,199,457
AMERICA MOVIL-L	Mexico	23,838,955

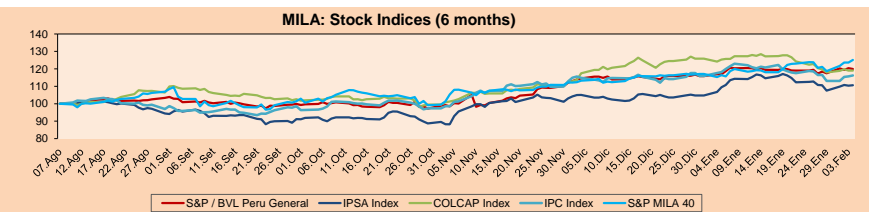
### MILA

Peru: The General Index of the BVL ended today's session with a positive result of +1.07%. The index maintains an annual accumulated positive trend of +4.62% in local currency, while the adjusted return in dollars amounts to +4.05%. Then, the S&P / BVL Peru SEL varied by +1.19% while the S&P / BVL LIMA 25 by +1.16%. The PEN spot reached 5 / 3.6378. Headline: Petroperú places bonds for US \$ 1,000M to finance refinery modernization projects

Chile: The IPSA index ended the day with a positive return of +0.85%. The sectors that benefited the most in the session were Cyclical Consumption (+2.69%) and Basic Materials (+2.59%). The best performing stocks were Colbun SA (+4.60%) and SMU SA (+3.65%). Headline: Chile would not recover to pre-pandemic levels until 2022, according to the OECD

Colombia: The COLCAP index closed today with a positive return of +0.80%. The sectors with the best performance of the day were Energy (+0.96%) and Utilities (+0.90%). The stocks with the best performance were Promigas SA ESP (+2.82%) and Celsia SA ESP (+2.10%). Headline: Millions of Colombian workers will receive from their employers, no later than February 14, the unemployment benefits corresponding to last year

Mexico: The IPC index obtained a negative performance of -0.05% to date. The sectors most affected in the session were Technology (-2.06%) and Utilities (-1.14%). The worst performing stocks were Genera SAB de CV (-3.46%) and Orbia Advance Corp SAB de CV (-2.78%). Headline: Mexican tax regulator to block startups that don't comply with digital taxes

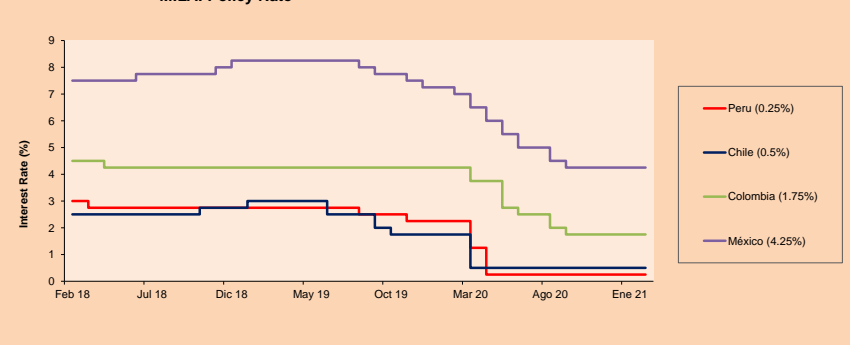


Base: 10/08/20=100  
Source: Bloomberg

### ETFs

ETFs	Curr.	Close	1D	5D	30 D	YTD	Exchange
▲ iShares MSCI All Peru Caped Index Fund	USD	36.4	3.16%	6.07%	2.33%	4.96%	NYSE Arca
▲ iShares MSCI All Chile Caped Index Fund	USD	31.1	1.60%	3.91%	-2.96%	2.95%	Cboe BZX
▲ Global X MSCI Colombia	USD	10.47	0.38%	1.26%	-8.64%	-7.83%	NYSE Arca
▲ iShares MSCI Mexico Capped	USD	42.1	1.42%	4.75%	-6.28%	-2.07%	NYSE Arca
▲ iShares MSCI Emerging Markets	USD	56.24	0.86%	5.50%	6.52%	8.84%	NYSE Arca
▲ Vanguard FTSE Emerging Markets	USD	54.5	0.74%	5.46%	6.82%	8.76%	NYSE Arca
▲ iShares Core MSCI Emerging Markets	USD	67.39	0.76%	5.58%	6.26%	8.62%	NYSE Arca
▲ iShares JP Morgan Emerging Markets Bonds	USD	63.67	0.71%	3.23%	2.20%	4.24%	Cboe BZX
▲ Morgan Stanley Emerging Markets Domestic	USD	6.16	0.49%	0.82%	-1.91%	-2.07%	New York

### MILA: Policy Rate



Source: Bloomberg

# PULSO BURSÁTIL

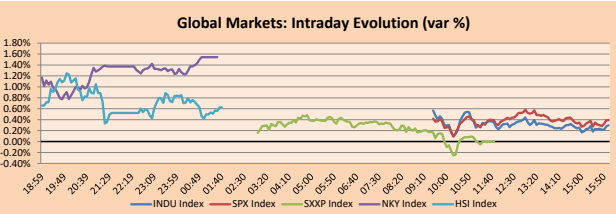
FACULTAD DE CIENCIAS EMPRESARIALES Y ECONÓMICAS  
CARRERA DE ECONOMÍA  
LABORATORIO DE MERCADO DE CAPITALES



## WORLD

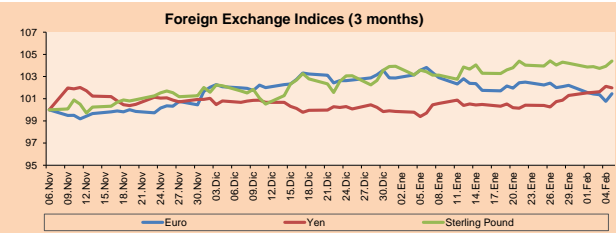
Main Indices	Close	1 D*	5 D*	1 M*	YTD*	Market Cap. (US\$ Mill.)
▲ Dow Jones (USA)	31,148.24	0.30%	3.89%	0.16%	1.77%	9,843,816
▲ Standard & Poor's 500 (EEUU)	3,886.83	0.39%	4.65%	1.62%	3.48%	34,351,334
▲ NASDAQ Composite (USA)	13,856.30	0.57%	6.01%	4.96%	7.51%	22,501,805
- Stoxx EUROPE 600 (Europe)	409.54	0.00%	3.46%	-0.40%	2.63%	9,371,529
▼ DAX (Germany)	14,056.72	-0.03%	4.64%	0.05%	2.46%	1,060,129
▼ FTSE 100 (United Kingdom)	6,489.33	-0.22%	1.28%	-5.59%	0.45%	1,371,721
▲ CAC 40 (France)	5,659.26	0.90%	4.82%	-0.83%	1.94%	1,534,003
▲ IBEX 35 (Spain)	8,214.70	1.13%	5.89%	-2.30%	1.75%	448,059
▲ HANG SENG Asia Pacific Index	212.79	0.84%	4.40%	2.20%	6.44%	26,780,719
▲ MSCI SENG (Hong Kong)	29,288.88	0.60%	3.55%	5.06%	7.56%	4,546,504
▼ SHANGHAI SE Comp. (China)	3,496.33	-0.16%	0.38%	-2.07%	0.67%	6,621,101
▲ NIKKEI 225 (Japan)	28,773.19	1.54%	4.03%	2.27%	4.86%	3,973,906
▲ S&P / ASX 200 (Australia)	6,840.53	1.11%	3.53%	1.22%	3.85%	1,667,643
▼ KOSPI (South Korea)	3,120.63	-0.05%	-0.30%	-1.00%	8.60%	1,839,078

\*Legend: Variation 1D: 1 Day; 5D: 5 Days; 1M: 1 Month; YTD: Var.% 12/31/19 to date



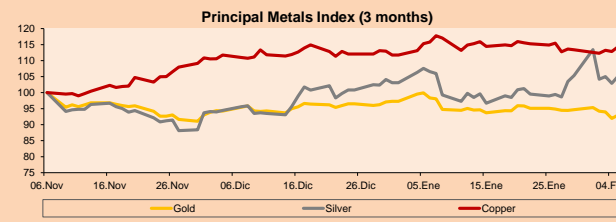
Currency	Price	1 D*	5 D*	1 M*	YTD*
▲ Euro	1.2046	0.69%	-0.74%	-2.28%	-1.39%
▲ Yen	105.3900	-0.14%	0.68%	2.28%	2.07%
▲ Sterling Pound	1.3735	0.46%	0.20%	0.93%	0.48%
▲ Yuan	6.4656	-0.10%	0.57%	0.04%	-0.94%
▲ Hong Kong Dollar	7.7529	0.00%	-0.01%	0.00%	0.00%
▼ Brazilian Real	5.3767	-1.02%	-1.74%	1.44%	3.43%
▲ Argentine Peso	88.0010	0.10%	0.79%	3.65%	4.56%

\*Legend: Variation 1D: 1 Day; 5D: 5 Days; 1M: 1 Month; YTD: Var.% 12/31/19 to date



Commodities	Close	1 D*	5 D*	1 M*	YTD*
▲ Oro (US\$ Oz. T) (LME)	1,814.11	1.12%	-1.62%	-5.45%	-4.44%
▲ Plata (US\$ Oz. T) (LME)	26.92	2.16%	-0.25%	-1.35%	1.96%
▲ Cobre (US\$ TM) (LME)	7,927.00	1.30%	0.82%	-1.29%	2.30%
▲ Zinc (US\$ TM) (LME)	2,647.00	1.51%	3.54%	-6.64%	-3.02%
▲ Petróleo WTI (US\$ Barril) (NYM)	56.85	1.10%	8.91%	12.15%	16.90%
▲ Estano (US\$ TM) (LME)	23,884.00	0.29%	2.95%	11.95%	16.25%
▲ Plomo (US\$ TM) (LME)	2,038.55	0.57%	1.50%	-0.22%	3.18%
▲ Azúcar #11 (US\$ Libra) (NYB-ICE)	16.42	2.31%	3.73%	1.05%	6.00%
▲ Cacao (US\$ TM) (NYB-ICE)	2,472.00	0.90%	-0.08%	1.19%	-2.49%
▲ Café Arábica (US\$ TM) (NYB-ICE)	124.50	0.36%	1.26%	2.98%	-2.92%

\*Legenda: Variación 1D: 1 Día; 5D: 5 Días; 1M: 1 Mes; YTD: Var.% 31/12/19 a la fecha



## Equity

Germany (Stocks from DAX Index)					
Largest gains	Curr.	Price	▲%	Exchange	
DPW GY	EUR	42.22	2.55	Xetra	
DHER GY	EUR	131.8	1.74	Xetra	
BEI GY	EUR	93	1.73	Xetra	
DAI GY	EUR	66.99	1.65	Xetra	
Largest losses					
DB1 GY	EUR	136.15	-1.70	Xetra	
SAP GY	EUR	108.48	-1.63	Xetra	
VOW3 GY	EUR	162.14	-1.52	Xetra	
DTE GY	EUR	15.065	-1.50	Xetra	

Europe (Stocks from STOXX EUROPE 600)					
Largest gains	Curr.	Price	▲%	Exchange	
ADDTB SS	SEK	129	8.40	Stockholm	
TRN LN	Gbp	484.2	7.89	Londres	
PNDORA DC	DKK	627	6.89	Copenhague	
DLG GY	EUR	56.12	6.77	Xetra	
Largest losses					
ALO FP	EUR	42.81	-5.79	EN Paris	
SKAB SS	SEK	215.4	-4.90	Stockholm	
JMAT LN	Gbp	2882	-4.22	Londres	
FABG SS	SEK	121.1	-3.97	Stockholm	

## Global Overview:

### United States:

US markets closed the day with positive returns, influenced once more by large corporate profits and the economic stimulus plan. In economic data, employment reports indicated a 49,000 increase in nonfarm payrolls for the month of January. However, they also showed a reduction in employment in construction and manufacturing. Analysts expected a bigger improvement. The result highlights the need to launch a new aid package. Regarding the latter, progress was made on the stimulus plan after lawmakers approved a budget plan to achieve the Biden package in the following weeks, without requiring Republican backing, according to Reuters. On the other hand, the VIX volatility index fell -4.13% and had its biggest weekly decline since the week ending on November 6. On the corporate front, Johnson & Johnson +1.5% after the asking the country's health regulators to allow its single-dose vaccine for emergency use, according to Reuters. Also, Clover Health +5.7% and GameStop Corp +19.2%. Thus, the S&P 500 +0.39%, DJIA +0.3% and NASDAQ +0.57% ended with gains.

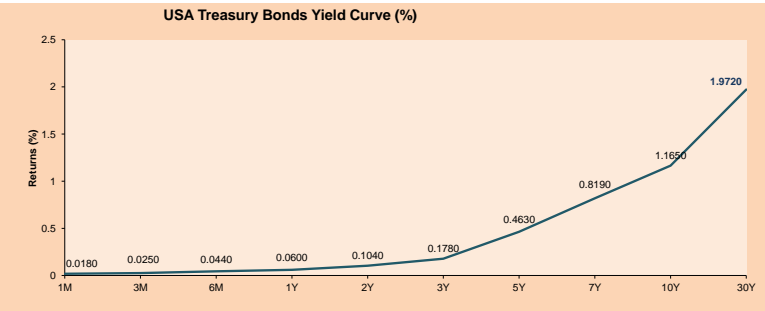
### Europe:

European markets ended today's session with mixed performances, mainly explained by disappointing data from the United States. Recently, the US Labor Department reported that unemployment rates fell to 6.3%, the first employment report of the Biden administration. However, the upbeat sentiment coming from Wall Street remained, with hopes of a rapid global economic recovery on the back of stimulus. The pan-European Stoxx 600 ended flat in Europe, with travel and leisure, basic materials and banking stocks offsetting losses generated by the telecommunications, utilities and healthcare sectors. In Germany, recently released statistical data showed that orders for domestically manufactured goods fell more than expected in December, according to the Reuters web portal. Corporate earnings season continued to boost individual stocks. BNP Paribas +2.61% posted net income above analysts' estimates for its 2020 fourth quarter, according to Refinitiv. Similarly, Sanofi +1.50%, Intesa Sanpaolo +2.61% and Thyssenkrupp +0.35% reported earnings before market close. Thus, the main indexes Stoxx 600 +0.00%, FTSE 100 -0.22%, CAC 40 +0.90% and DAX -0.03%, closing a mixed day.

### Asia:

Major Asian markets closed mostly higher, buoyed by the U.S. economic outlook and talk of a U.S. fiscal stimulus. In Tokyo, the Nikkei closed today with a +1.54% gain driven by good corporate results from its major firms in the pharmaceutical, mining and transportation machinery sectors. In corporate stocks, Sony registered a notable rise of +6.86% after presenting solid business results at mid-week. On the other hand, Hong Kong's major indices posted their best weekly performance in three months following persistent buying activity by Mainland Chinese investors; however, resurgent concerns over trade tensions kept gains in check. Thus, the Hang Seng index closed 0.60% higher on Friday, boosted by the hugely successful debut of Kaishou Technology which surged 160% in its first day of trading. In Korea, the Kospi gained +1.07% today driven mainly by foreign investors recovering from the previous session's -1.30% loss. Thus Nikkei +1.54%, Hang Seng +0.60%, Shanghai Composite -0.16% y ASX 200 +1.11% closed higher.

ETFs	Curr.	Close	1D	5D	30 D	YTD	Exchange
SPDR S&P 500 ETF TRUST	USD	367.71	0.39%	4.77%	3.79%	3.70%	NYSE Arca
ISHARES MSCI EMERGING MARKET	USD	56.24	0.86%	5.50%	6.52%	8.84%	NYSE Arca
ISHARES IBOXX HIGH YLD CORP	USD	87.52	0.15%	0.63%	0.61%	0.25%	NYSE Arca
FINANCIAL SELECT SECTOR SPDR	USD	30.89	0.03%	6.70%	1.28%	4.78%	NYSE Arca
VANECK GOLD MINERS	USD	34.61	2.28%	0.29%	-10.01%	-3.91%	NYSE Arca
ISHARES RUSSELL 2000 ETF	USD	221.65	1.30%	7.83%	8.37%	13.05%	NYSE Arca
SPDR GOLD SHARES	USD	169.81	0.99%	-1.62%	-5.61%	-4.79%	NYSE Arca
ISHARES 20+ YEAR TREASURY BO	USD	148.03	-0.84%	-2.61%	-3.35%	-6.15%	NASDAQ GM
INVESCO QQQ TRUST SERIES 1	USD	331.36	0.34%	5.34%	7.75%	5.62%	NASDAQ GM
ISHARES NASDAQ BIOTECHNOLOGY	USD	169.05	1.76%	5.24%	10.76%	11.59%	NASDAQ GM
ENERGY SELECT SECTOR SPDR	USD	42.56	0.85%	8.24%	4.14%	12.30%	NYSE Arca
PROSHARES ULTRA VIX S1 FUTUR	USD	10.05	-0.29%	+31.35%	-11.45%	-5.63%	Cboe BZX
UNITED STATES OIL FUND LP	USD	38.19	1.01%	8.56%	11.96%	15.69%	NYSE Arca
ISHARES MSCI BRAZIL ETF	USD	36.23	2.11%	5.97%	-1.09%	-2.27%	NYSE Arca
SPDR S&P OIL & GAS EXP & PR	USD	70.01	0.30%	8.85%	7.28%	19.68%	NYSE Arca
UTILITIES SELECT SECTOR SPDR	USD	63.59	0.54%	2.32%	1.53%	1.42%	NYSE Arca
ISHARES US REAL ESTATE ETF	USD	88.24	0.19%	3.47%	6.71%	3.02%	NYSE Arca
SPDR S&P BIOTECH ETF	USD	166.78	2.49%	9.09%	16.37%	18.47%	NYSE Arca
ISHARES IBOXX INVESTMENT GRA	USD	134.79	-0.29%	-0.60%	-0.80%	-2.42%	NYSE Arca
ISHARES JIP MORGAN USD EMERGI	USD	114.22	0.11%	0.32%	-0.26%	-1.46%	NASDAQ GM
REAL ESTATE SELECT SECT SPDR	USD	37.94	0.34%	3.21%	7.88%	3.77%	NYSE Arca
ISHARES CHINA LARGE-CAP ETF	USD	51.69	0.76%	4.72%	9.96%	11.33%	NYSE Arca
CONSUMER STAPLES SPDR	USD	65.76	0.94%	2.61%	-1.51%	-2.51%	NYSE Arca
VANECK JR GOLD MINERS	USD	50.37	1.92%	0.58%	-12.84%	-7.13%	NYSE Arca
SPDR BBG BARG HIGH YIELD BND	USD	109.26	0.19%	0.79%	0.63%	0.29%	NYSE Arca
VANGUARD REAL ESTATE ETF	USD	88.11	0.35%	3.71%	6.89%	3.74%	NYSE Arca
GRAYSCALE BITCOIN TRUST BTC	USD	37.88	-0.21%	9.20%	-13.77%	18.38%	OTC US



Source: Bloomberg

Capital Market Laboratory Coordinator: Economist Bruno Bellido  
Collaboration: Piero Best, Maria Camarena, Alonso Stephen Hernández and Adrian Paredes  
email: pulsobursatil@ulima.edu.pe  
facebook: www.facebook.com/pulsobursatil.uli

LIMA

Stocks

Ticker	Currency	Price	1D*	5D*	30D*	YTD*	Frequency	Volume (US\$)	Beta	Dividend Yield (%)	Price Earning	Market Cap. (M US\$)	Economic Sector*	Index Weight
▲ ALICORC1 PE**	S/.	8.28	1.01%	1.41%	0.32%	1.25%	100.00%	415,164	0.74	3.02	19.04	1,940.48	Industrial	3.53%
▲ ATACOCB1 PE**	S/.	0.16	0.00%	10.34%	14.29%	15.94%	95.00%	1,895	1.07	0.00	-	41.56	Mining	1.02%
- BACKJUS1 PE**	S/.	22.70	0.00%	3.18%	8.10%	12.66%	85.00%	71,034	0.53	0.00	10.27	8,645.80	Industrial	0.82%
▲ BAP PE**	US\$	158.00	1.48%	4.98%	-3.07%	-1.62%	100.00%	1,024,600	1.62	5.57	-	14,912.41	Diverse	5.82%
▼ BVN PE**	US\$	10.45	-0.48%	-0.48%	-12.63%	-12.92%	100.00%	272,190	1.28	0.00	-	2,880.38	Mining	5.88%
▲ CASAGRC1 PE**	S/.	5.95	0.85%	7.21%	19.00%	25.26%	70.00%	91,117	0.69	3.80	10.68	137.77	Agricultural	1.31%
▲ BBVAC1 PE**	S/.	2.43	1.25%	-0.82%	8.48%	11.98%	100.00%	135,707	0.74	3.55	17.52	4,361.39	Finance	2.85%
▲ CORARE1 PE**	S/.	1.04	0.97%	8.33%	15.56%	16.85%	100.00%	46,436	0.57	6.71	6.20	399.21	Industrial	1.72%
▲ CPACASC1 PE**	S/.	6.02	1.18%	4.70%	14.67%	13.58%	100.00%	54,955	0.57	3.82	19.42	788.09	Industrial	2.38%
▲ CVERDEC1 PE**	US\$	22.50	2.27%	3.21%	4.65%	7.55%	100.00%	477,329	0.79	0.00	36.57	7,876.26	Mining	5.25%
▲ ENGEPEC1 PE**	S/.	2.33	0.43%	1.30%	13.66%	16.50%	75.00%	13,198	0.48	9.44	11.71	1,818.21	Public Services	1.44%
- ENDISPC1**	S/.	6.05	0.00%	7.65%	12.04%	12.04%	95.00%	129,461	0.46	0.00	11.42	1,061.99	Public Services	0.98%
▲ FERREYC1 PE**	S/.	2.02	1.00%	-1.46%	12.85%	16.09%	100.00%	280,311	0.61	3.79	27.26	541.78	Diverse	4.90%
- AENZAC1 PE**	S/.	1.77	0.00%	-1.67%	2.91%	1.72%	90.00%	232,181	0.80	0.00	-	424.24	Diverse	4.05%
▲ IFS PE**	US\$	32.00	1.33%	1.27%	-1.84%	3.43%	100.00%	219,555	1.36	5.47	32.18	3,694.33	Diverse	7.22%
▲ INRETC1 PE**	US\$	42.80	1.78%	1.90%	6.73%	9.18%	100.00%	1,124,307	0.61	1.32	34.90	4,400.15	Diverse	5.28%
- LUSURC1 PE**	S/.	28.00	0.00%	2.19%	7.69%	9.80%	95.00%	132,480	0.57	2.49	27.48	3,748.05	Public Services	1.81%
▼ MINSUR1 PE**	S/.	2.25	-0.88%	0.00%	13.64%	21.62%	85.00%	110,829	0.76	0.00	-	1,783.15	Mining	3.09%
- PML PE**	US\$	0.13	0.00%	15.45%	-15.33%	19.81%	55.00%	2,375	1.43	0.00	-	33.55	Mining	2.12%
- RELAPAC1 PE**	S/.	0.08	0.00%	7.14%	5.63%	8.70%	100.00%	27,659	0.46	0.00	-	171.52	Industrial	2.12%
▲ SCCO PE**	US\$	71.58	2.98%	7.80%	4.01%	8.62%	80.00%	96,028	0.75	2.10	33.27	55,336.58	Mining	2.14%
▲ SIDERC1 PE**	S/.	0.95	1.06%	6.74%	11.76%	11.76%	100.00%	34,852	0.83	36.03	11.29	320.67	Industrial	1.43%
▲ TV PE**	US\$	0.16	1.27%	2.56%	-10.61%	8.84%	100.00%	32,453	1.51	0.00	-	158.25	Mining	2.93%
▲ UNACEMC1 PE**	S/.	1.74	2.35%	-0.57%	13.73%	12.26%	100.00%	238,200	0.82	0.75	47.85	869.63	Industrial	3.00%
▲ VOLCABC1 PE**	S/.	0.72	2.86%	18.03%	33.33%	38.46%	100.00%	563,353	0.92	0.00	-	1,965.29	Mining	5.90%
▲ NEXAPEC1 PE**	S/.	3.46	1.76%	12.34%	14.95%	22.26%	70.00%	202,914	1.00	0.00	-	1,256.72	Mining	1.56%

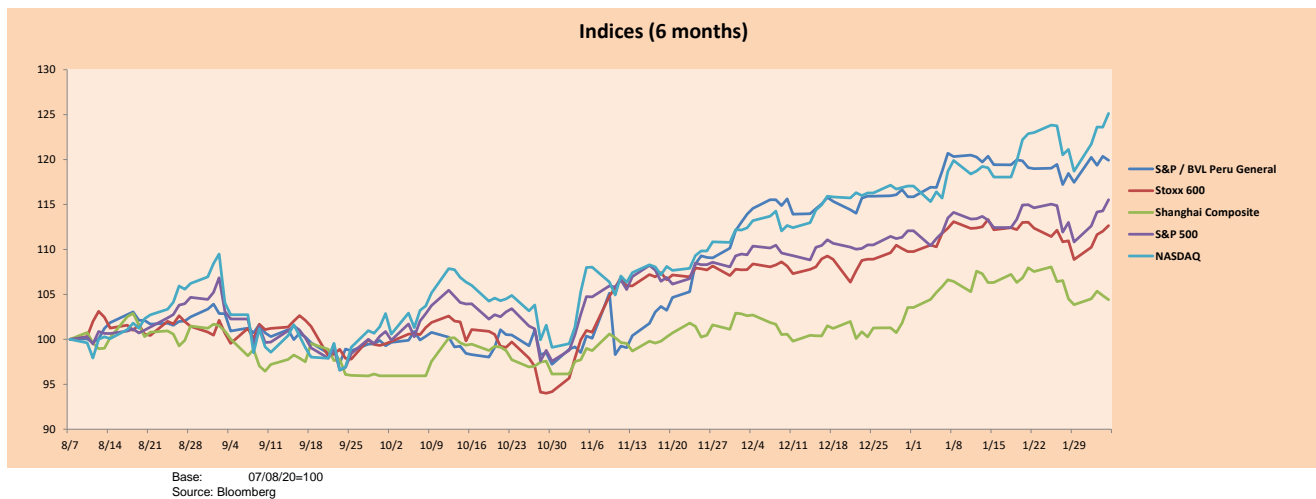
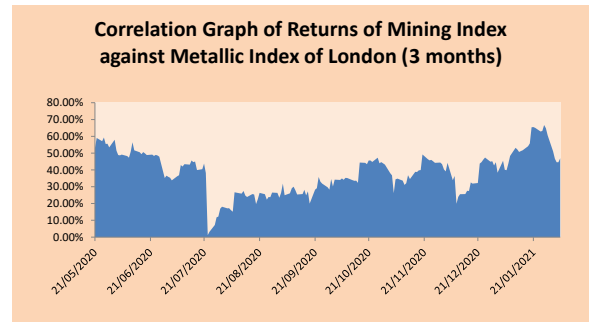
Quantity of shares: 26  
 Source: Bloomberg, Economática  
 \* Bloomberg Industry Classification System  
 \*\* PER is used in the stock market and original currency of the instrument  
 \*Legend: Variation 1D: 1 Day; 5D: 5 Days; 1M: 1 Month; YTD: Var.% 12/31/19 to date

Sectorial Indices

	Close	1D*	5D*	30D*	YTD*	Beta
▲ S&P/BVLMining	408.55	1.76%	5.71%	1.21%	4.77%	0.82
▲ S&P/BVLConsumer	1,227.28	1.35%	1.81%	8.61%	12.74%	0.41
▲ S&P/BVLIndustrials	212.15	1.33%	0.73%	11.14%	11.33%	0.51
▲ S&P/BVLFinancials	1,031.35	1.25%	4.34%	-2.21%	-0.25%	1.75
▲ S&P/BVLConstruction	228.97	1.48%	1.60%	10.51%	9.49%	0.54
▼ S&P/BVLPublicSvcs	673.40	-0.21%	2.09%	8.34%	9.66%	0.17
▼ S&P/BVLElectricUtil	657.41	-0.20%	2.09%	8.34%	9.66%	0.17

S&P/BVLConstructionTRPEN

\*Legend: Variation 1D: 1 Day; 5D: 5 Days; 1M: 1 Month; YTD: Var.% 12/31/19 to date



Base: 07/08/20=100  
 Source: Bloomberg

Capital Market Laboratory Coordinator: Economist Bruno Bellido  
 Collaboration: Piero Best, Maria Camarena, Alonso Stephen Hernández and Adrian Paredes  
 email: pulsohorsatil@ulima.edu.pe  
 facebook: www.facebook.com/pulsohorsatil.ul

The content of this document is just for informational purposes. The information and opinions expressed should not be consider as recommendations for future decisions. Under any circumstances, the Capital Market Laboratory of University of Lima will be responsible for the use of the statements in this document.

## SOVEREIGN RATING

### RISK RATINGS

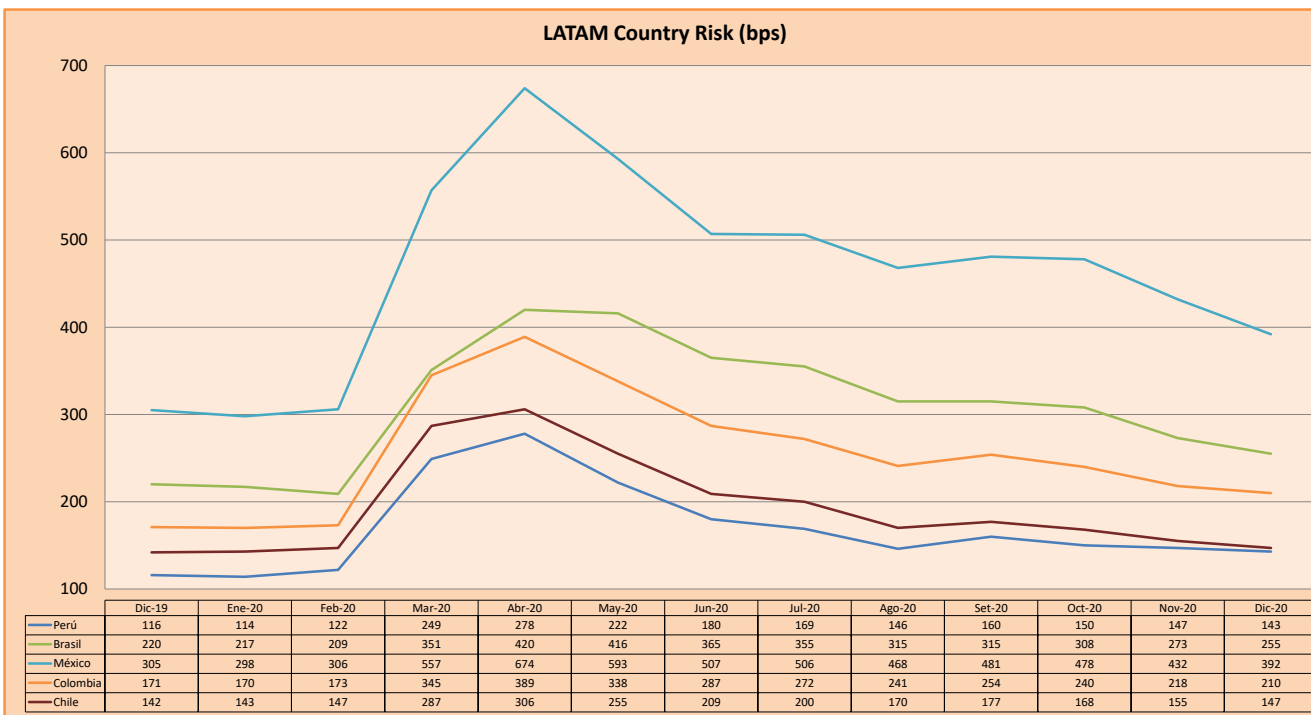
Moody's	S&P	Fitch	
Aaa	AAA	AAA	Prime
Aa1	AA+	AA+	High credit quality
Aa2	AA	AA	
Aa3	AA-	AA-	
A1	A+	A+	Medium-high grade, with low credit risk
A2	A	A	
A3	A-	A-	
Baa1	BBB+	BBB+	Moderate Credit Risk
Baa2	BBB	BBB	
Baa3	BBB-	BBB-	
Ba1	BB+	BB+	It has speculative elements and it is subject to substantial credit risk
Ba2	BB	BB	
Ba3	BB-	BB-	
B1	B+	B+	It is considered speculative and it has high credit risk
B2	B	B	
B3	B-	B-	
Caa1	CCC+		Bad credit conditions and it is subject to high credit risk
Caa2	CCC		
Caa3	CCC-	CCC	
Ca	C		Very close to default or in default
		DDD	
C	D	DD D	

Source: Bloomberg

Latin America Credit Rating			
Clasificadora de riesgo			
Country	Moody's	Fitch	S&P
Peru	A3	BBB+	BBB+
México	Ba2	BB-	BB-
Venezuela	C	WD	SD
Brazil	Ba2	BB-	BB-
Colombia	Baa2	BBB-	BBB-
Chile	A1	A-	A+
Argentina	Ca	WD	CCC+
Panama	Baa1	BBB-	BBB

Source: Bloomberg

### LATAM Country Risk (bps)



Source: BCRP

Capital Market Laboratory Coordinator: Economist Bruno Bellido  
Collaboration: Piero Best, Maria Camarena, Alonso Stephen Hernández and Adrian Paredes  
email: pulsobursatil@ulima.edu.pe  
facebook: www.facebook.com/pulsobursatil.ul