

PULSO BURSÁTIL

FACULTAD DE CIENCIAS EMPRESARIALES Y ECONÓMICAS
CARRERA DE ECONOMÍA
LABORATORIO DE MERCADO DE CAPITALES

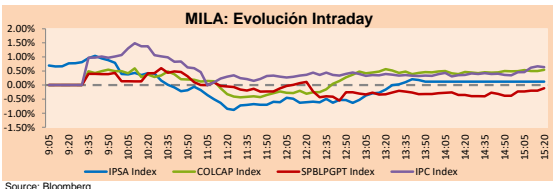


MILA

Lima, March 5, 2021

Main Indexes	Close	1 D	5 D	1 M	YTD	Cap. Burs. (US\$ bill)
▲ IPSA (Chile)	4,713.73	0.28%	3.07%	5.05%	12.84%	126.87
▲ IGPA (Chile)	23,784.48	0.20%	2.97%	5.04%	13.22%	157.01
▲ COLSC (Colombia)	1,054.83	0.54%	-0.40%	-1.51%	-0.39%	5.74
▲ COLCAP (Colombia)	1,344.72	0.57%	-1.09%	-2.79%	-6.48%	80.36
▲ S&P/BVL (Perú)*	22,550.39	0.06%	0.09%	2.78%	8.30%	112.04
▲ S&P/BVL SEL (Perú)	600.24	0.61%	0.70%	1.59%	8.86%	91.49
▲ S&P/BVL LIMA 25	29,466.59	0.38%	0.10%	3.85%	16.94%	111.03
▲ IPC (México)	46,342.54	0.74%	3.92%	4.85%	5.16%	275.51
▲ S&P MILA 40	544.97	0.42%	0.80%	1.97%	1.93%	5,871.76

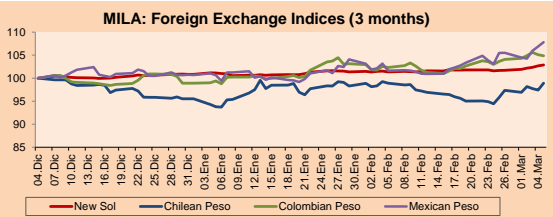
*Legend: Variation 1D: 1 day; 5D: 5 days; 1M: 1 Month; YTD: Var% 12/31/20 to date



Source: Bloomberg

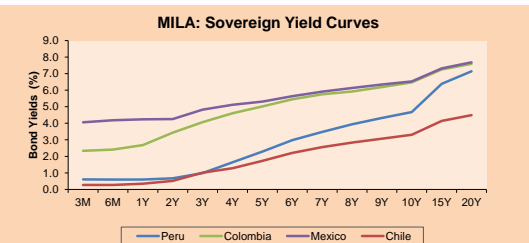
Currency	Price	1D*	5D*	30 D*	YTD*
▲ New Sol (PEN)	3.6910	0.20%	1.16%	1.36%	2.02%
▲ Chilean Peso (CLP)	736.99	1.52%	1.60%	0.60%	3.54%
▼ Colombian Peso (COP)	3,635.33	-0.23%	0.75%	3.03%	5.99%
▲ Mexican Peso (MXN)	21.31	0.89%	2.19%	5.53%	7.02%

*Legend: Variation 1D: 1 day; 5D: 5 days; 1M: 1 Month; YTD: Var% 12/31/20 to date



Base: 04/12/20=100
Source: Bloomberg

Fixed Income	Currency	Price	Bid Yield (%)	Ask Yield (%)	Duration
PERU 7.35 07/21/25	USD	124.482	1.59	1.48	3.84
PERU 4.125 08/25/27	USD	111.995	2.17	2.08	5.79
PERU 8.75 11/21/33	USD	154.014	3.50	3.42	8.73
PERU 6.55 03/14/37	USD	134.216	3.71	3.69	10.33
PERU 5.625 11/18/2050	USD	130.962	3.88	3.84	16.32
CHILE 2.25 10/30/22	USD	102.815	0.65	0.41	1.61
CHILE 3.125 01/21/26	USD	108.277	1.41	1.32	4.56
CHILE 3.625 10/30/42	USD	102.853	3.45	3.42	15.30
COLOM 11.85 03/09/28	USD	158.498	2.76	2.53	5.39
COLOM 10.375 01/28/33	USD	158.816	4.21	3.97	7.99
COLOM 7.375 09/18/37	USD	131.577	4.65	4.59	10.37
COLOM 6.125 01/18/41	USD	118.256	4.73	4.67	12.32
MEX 4 10/02/23	USD	118.256	4.734	4.667	12.32
MEX5.55 01/45	USD	115.366	4.51	4.48	14.09



Source: Bloomberg

Equity

Largest gains	Exchange	Currency	Price	▲ %
GRUPO MEXICO-B	Mexico	MXN	105.77	6.42
CENOSUD SA	Chile	CLP	1455.00	3.93
BANCO CRED INVER	Chile	CLP	33598.00	3.70
BECLC SAB DE CV	Mexico	MXN	44.74	3.66
GRUPO AEROPORTUA	Mexico	MXN	130.99	3.61

Per Turnover	Exchange	Amount (US\$)
GRUPO MEXICO-B	Mexico	43,162,904
AMERICA MOVIL-L	Mexico	30,295,977
WALMART DE MEXIC	Mexico	28,040,610
CEMEX SAB-CPO	Mexico	26,461,963
GRUPO F BANORT-O	Mexico	24,241,435

Largest losses	Exchange	Currency	Price	▼ %
ITAU CORPBANCA	Chile	CLP	2.525	-1.94
INRETAIL PERU CO	Peru	USD	44.3	-1.56
GRUPO AVAL SA-PF	Colombia	COP	1162	-1.19
BANCOLOMBIA-PREF	Colombia	COP	30800	-1.12
PARQUE ARAUCO	Chile	CLP	1330	-1.12

Per Volume	Exchange	Volume
ITAU CORPBANCA	Chile	648,575,793
BANCO SANTANDER	Chile	287,931,808
ENEL AMERICAS SA	Chile	156,063,285
ENEL CHILE SA	Chile	109,633,248
BANCO DE CHILE	Chile	97,969,089

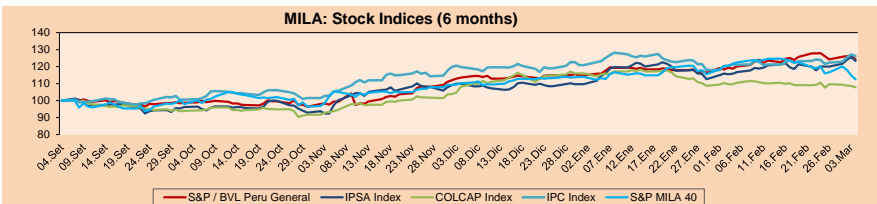
MILA

Peru: The General Index of the BVL ended today's session with a positive result of +0.06%. The index maintains an annual accumulated positive trend of +8.30% in local currency, while the adjusted return in dollars amounts to +6.16%. Then, the S&P / BVL Peru SEL changed by +0.61% while the S&P / BVL LIMA 25 by +0.38%. The PEN spot reached S / 3.6910. Headline: Peru is among the countries with the lowest degree of interoperability in health

Chile: The IPSA index ended the day with an upward return of +0.28%. The sectors with the highest growth during the day were Energy (+2.62%) and Industrial (+2.32%). The stocks with the best performance were Banco de Chile (+3.69%) and Aguas Andinas SA (+3.60%). Headline: Lithium giant Albemarle accuses Chile of discrimination for denying access to salt study

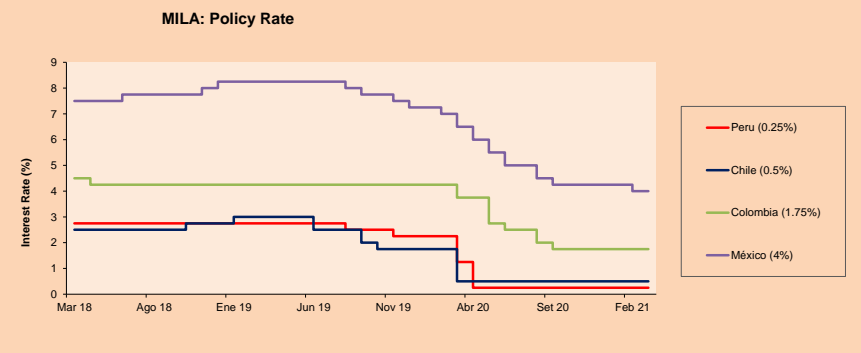
Colombia: The COLCAP index closed today with a positive return of +0.57%. The sectors with the highest increase in the day were Technology (+9.13%) and Energy (+5.16%). The stocks with the best returns were Empresa de Telecom de Bogotá (+9.13%) and Ecopetrol SA (+5.31%). Headline: Colombia's indebtedness will be higher in 2021 due to spending caused by the COVID emergency

Mexico: The IPC index closed the day with a positive return of +0.74%. The sectors that led the day were Non-Cyclical Consumption (+2.10%) and Technology (+1.59%). The stocks with the highest earnings were Fomento Económico Mexicano SAB de CV (+3.45%) and Orbia Advance Corporation SAB de CV (+3.16%). Headline: Central Bank of Mexico improves its economic growth forecast, but "vaccination will be key"



Base: 07/09/20=100
Source: Bloomberg

ETFs	Curr.	Close	1D	5D	30 D	YTD	Exchange
▼ iShares MSCI All Peru Caped Index Fund	USD	36.01	-1.53%	-2.86%	2.36%	3.84%	NYSE Arca
▲ iShares MSCI All Chile Caped Index Fund	USD	32.34	0.40%	2.96%	5.76%	7.05%	Cboe BZX
▲ Global X MSCI Colombia	USD	10.344	1.07%	2.93%	-1.24%	-8.94%	NYSE Arca
▲ iShares MSCI Mexico Capped	USD	41.6	-0.24%	2.31%	0.36%	-3.23%	NYSE Arca
▲ iShares MSCI Emerging Markets	USD	53.83	1.09%	0.19%	-3.43%	4.18%	NYSE Arca
▲ Vanguard FTSE Emerging Markets	USD	52.6	0.71%	0.21%	-2.63%	4.97%	NYSE Arca
▲ iShares Core MSCI Emergina Markets	USD	64.84	0.93%	0.17%	-3.04%	4.51%	NYSE Arca
▲ iShares JP Morgan Emergina Markets Bonds	USD	62.61	0.40%	0.51%	-1.18%	2.50%	Cboe BZX
▼ Morgan Stanley Emerging Markets Domestic	USD	5.97	-0.83%	-0.17%	-2.93%	-5.09%	New York



Source: Bloomberg

Capital Market Laboratory Coordinator: Economist Bruno Bellido
Collaboration: Piero Best, María Camarena, Alonso Stephen Hernández and Adrián Paredes
email: pulsobursatil@ulima.edu.pe
facebook: www.facebook.com/pulsobursatil.uil

The content of this document is just for informational purposes. The information and opinions expressed should not be considered as recommendations for future decisions. Under any circumstances, the Capital Market Laboratory of University of Lima will be responsible for the use of the statements in this document.

PULSO BURSÁTIL

FACULTAD DE CIENCIAS EMPRESARIALES Y ECONÓMICAS
CARRERA DE ECONOMÍA
LABORATORIO DE MERCADO DE CAPITALES



WORLD

Main Indices	Close	1 D*	5 D*	1 M*	YTD*	Market Cap. (US\$ Mill.)
▲ Dow Jones (USA)	31,496.30	1.85%	1.82%	0.35%	2.91%	9,546,104
▲ Standard & Poor's 500 (EEUU)	3,841.94	1.95%	0.81%	-1.88%	2.29%	33,898,663
▲ NASDAQ Composite (USA)	12,920.15	1.55%	-2.08%	-7.63%	0.25%	21,042,303
▼ Stoxx EUROPE 600 (Europe)	408.68	-0.78%	0.91%	-0.51%	2.42%	9,422,544
▼ DAX (Germany)	13,920.69	-0.97%	0.97%	-0.99%	1.47%	1,063,652
▼ FTSE 100 (United Kingdom)	6,630.52	-0.31%	2.27%	1.64%	2.63%	1,383,914
▼ CAC 40 (France)	5,782.65	-0.82%	1.39%	1.70%	4.17%	1,577,156
▼ IBEX 35 (Spain)	8,286.80	-0.80%	0.75%	0.52%	2.64%	456,186
▼ MSCI AC Asia Pacific Index	206.01	-0.56%	-0.28%	-0.07%	3.04%	26,303,326
▼ HANG SENG (Hong Kong)	29,098.29	-0.47%	0.41%	-4.75%	6.86%	4,379,513
▼ SHANGHAI SE Comp. (China)	3,501.99	-0.04%	-0.20%	-0.86%	0.83%	6,641,755
▼ NIKKEI 225 (Japan)	28,864.32	-0.23%	-0.35%	-1.78%	5.17%	3,935,523
▼ S&P / ASX 200 (Australia)	6,710.85	-0.74%	0.56%	-0.72%	3.70%	1,636,855
▲ KOSPI (South Korea)	3,026.26	0.74%	3.92%	-2.10%	5.32%	1,781,700

*Legend: Variation 1D: 1 Day; 5D: 5 Days; 1M: 1 Month; YTD: Var. % 12/31/20 to date

Equity

Germany (Stocks from DAX Index)

Largest gains	Curr.	Price	▲%	Exchange	Largest losses	Curr.	Price	▼%	Exchange
MUV2 GY	EUR	255.4	-2.15	Xetra	0	Invalid Ser/A Invalid Sec/A Invalid Sec/A Invalid Security			
ALV GY	EUR	207.85	-1.12	Xetra	0	Invalid Ser/A Invalid Sec/A Invalid Sec/A Invalid Security			
ICOV GY	EUR	81.26	0.26	Xetra	0	Invalid Ser/A Invalid Sec/A Invalid Sec/A Invalid Security			
BAS GY	EUR	70.68	-0.56	Xetra	0	Invalid Ser/A Invalid Sec/A Invalid Sec/A Invalid Security			

Europe (Stocks from STOXX EUROPE 600)

Largest gains	Curr.	Price	▲%	Exchange	Largest losses	Curr.	Price	▼%	Exchange
ALE PW	PLN	64	-1.14	Warsaw	0	Invalid Ser/A Invalid Sec/A Invalid Sec/A Invalid Security			
ROR LN	Gbp	365.2	-0.60	Londres	0	Invalid Ser/A Invalid Sec/A Invalid Sec/A Invalid Security			
TMV GY	EUR	42.17	-6.10	Xetra	0	Invalid Ser/A Invalid Sec/A Invalid Sec/A Invalid Security			
KYG ID	EUR	106	-0.84	EN Dublin	0	Invalid Ser/A Invalid Sec/A Invalid Sec/A Invalid Security			

Global Overview:

United States:

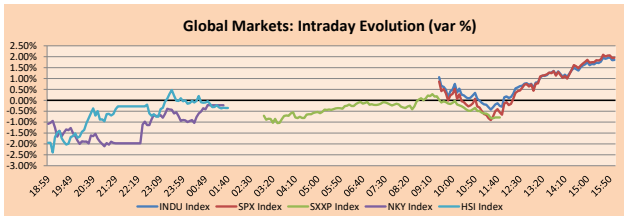
US markets closed the session with positive returns, driven by big technology that rallied after a volatile week. Fears of a rise in bond yields hit investors' optimism of an economic recovery this week. This session, the benchmark 10-year Treasury rate hit a new one-year high of 1.626% influenced by nonfarm payroll data that rose 379,000 jobs for the previous month, above the expectations of economists. On the other hand, investors' focus also remains on the fiscal stimulus package after talks began about a series of amendments to determine how the money would be used. Regarding weekly results, the S&P 500, DJIA and NASDAQ indices closed + 0.8%, + 1.8% and -2.1%, respectively. In the S&P 500, the energy sector registered a 3.9% increase, marking a high of one year attributed to the increase in oil prices. In corporate stocks, Apple +1.07%, Alphabet +3.10%, Microsoft +2.15% and Oracle +6.65%. Thus, the S&P 500 +1.95%, DJIA +1.85% and NASDAQ +1.55% rose.

Europe:

European markets closed the day with negative results, pressured by rising bond yields due to higher inflation expectations. In the STOXX 600, the worst hit sectors were travel and financial services. However, when it comes to weekly returns, the STOXX 600 finished positive at 0.9%, driven by expectations of an economic recovery in 2021, with investors targeting sectors with the best chance of winning from the recovery, according to Reuters. Regarding these growth expectations for the Eurozone, analysts have been more moderate in their forecasts, some seeing the increase in rates as an indicator of reflation. On the other hand, technology stocks returned to show the worst performances for the second week in a row. In economic data, orders for German-made products grew twice as high as expected in January, as strong external demand largely outpaced domestic weakness, according to Reuters. Thus, the STOXX 600 -0.78%, DAX -0.97%, CAC 40 -0.82%, FTSE 100 -0.31% and FISE MIB -0.55% ended lower, among other indices.

Asia:

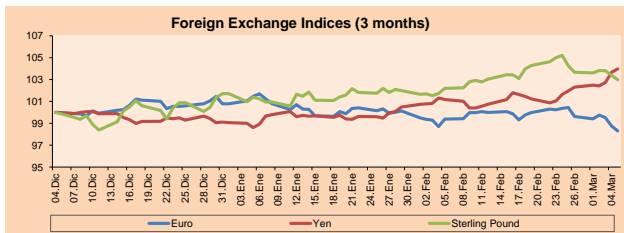
Major Asian markets ended the last day of the week mostly lower following a massive sell-off in stocks and bonds in the U.S. market in yesterday's session. Meanwhile, in China, regulators continue to call for banks to cut lending this year to guard against bubbles in domestic financial markets. In South Korea, stocks closed at their lowest level of the week after Vice President Fin Min Kim announced the possibility of a dramatic increase in accelerating inflation. In corporate stocks, Xiaomi Corp lost -3.74% after the U.S. banned investment in the company over alleged military ties. Likewise, in Japan, stocks closed lower after the extension of the state of emergency in Tokyo for 2 weeks. Finally, the Australian index closed the session with losses dragged down by mining and technology stocks -1.60%. Thus, Hang Seng -0.47%, KOSPI -0.57%, S&P/ASX 200 -0.74%, CSI 300 -0.34%, Shanghai Composite -0.04%, Shenzhen Comp +0.17%, NIKKEI -1.50% ended the session mostly with losses.



Source: Bloomberg

Currency	Price	1 D*	5 D*	1 M*	YTD*
▼ Euro	1.1915	-0.45%	-1.33%	-1.01%	-2.46%
▲ Yen	108.3100	0.31%	1.63%	3.12%	4.90%
▲ Sterling Pound	1.3841	-0.39%	-0.66%	1.42%	1.25%
▲ Yuan	6.4971	0.42%	0.28%	0.54%	-0.46%
▲ Hong Kong Dollar	7.7632	0.05%	0.09%	0.15%	0.13%
▲ Brazilian Real	5.6831	0.26%	1.42%	5.67%	9.32%
▲ Argentine Peso	90.3852	0.08%	0.60%	2.92%	7.39%

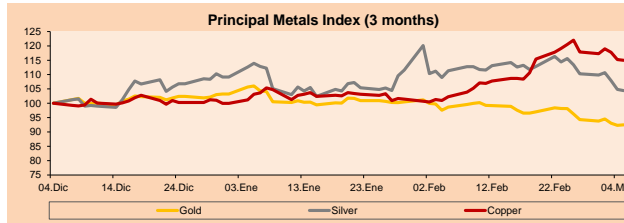
*Legend: Variation 1D: 1 Day; 5D: 5 Days; 1M: 1 Month; YTD: Var. % 12/31/20 to date



Base: 04/12/20=100
Source: Bloomberg

Commodities	Close	1 D*	5 D*	1 M*	YTD*
▲ Oro (US\$ Oz. T) (LME)	1,700.64	0.18%	-1.93%	-7.27%	-10.42%
▼ Plata (US\$ Oz. T) (LME)	25.25	-0.43%	-5.33%	-6.12%	-4.38%
▲ Cobre (US\$ TM) (LME)	8,913.20	-0.22%	-2.47%	13.52%	15.02%
▲ Zinc (US\$ TM) (LME)	2,753.75	0.93%	-0.78%	6.26%	0.89%
▲ Petróleo WTI (US\$ Barril) (NYM)	66.09	3.54%	7.46%	19.00%	35.74%
▲ Estarío (US\$ TM) (LME)	26,404.00	6.53%	-0.51%	8.48%	28.52%
▲ Plomo (US\$ TM) (LME)	1,983.50	-0.68%	-2.71%	-1.75%	0.39%
▲ Azúcar #11 (US\$ Libra) (NYB-ICE)	16.40	0.86%	-0.30%	7.82%	11.72%
▲ Casaca (US\$ TM) (NYB-ICE)	2,546.90	-3.01%	-2.23%	3.75%	0.43%
▼ Café Arabica (US\$ TM) (NYB-ICE)	128.85	-2.59%	-6.29%	2.18%	-1.00%

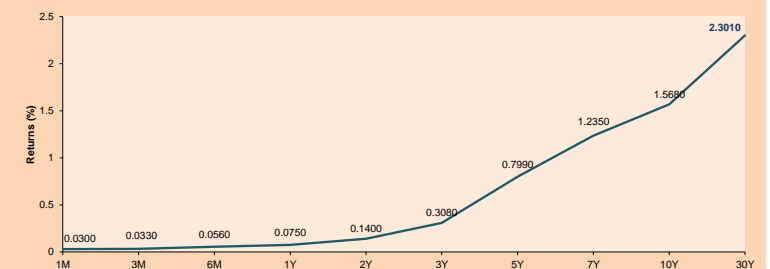
*Leyenda: Variación 1D: 1 Día; 5D: 5 Días; 1M: 1 Mes; YTD: Var. % 31/12/20 a la fecha



Base: 04/12/20=100
Source: Bloomberg

ETFs	Curr.	Close	1D	5D	30 D	YTD	Exchange
SPDR S&P 500 ETF TRUST	USD	383.63	1.84%	0.86%	0.47%	2.61%	NYSE Arca
ISHARES MSCI EMERGING MARKET	USD	53.83	1.09%	0.19%	-3.43%	4.18%	NYSE Arca
ISHARES IBOXX HIGH YLD CORP	USD	86.62	0.30%	0.21%	-0.68%	-0.78%	NYSE Arca
FINANCIAL SELECT SECTOR SPDR	USD	33.71	1.90%	4.33%	11.59%	14.35%	NYSE Arca
VANECK GOLD MINERS	USD	31.78	1.31%	2.09%	-8.18%	-11.77%	NYSE Arca
ISHARES RUSSELL 2000 ETF	USD	217.71	2.12%	-2.27%	1.61%	11.04%	NYSE Arca
SPDR GOLD SHARES	USD	159.14	0.06%	-1.65%	-7.40%	-10.78%	NYSE Arca
ISHARES 20+ YEAR TREASURY BO	USD	138.91	0.19%	-2.94%	-7.20%	-11.93%	NASDAQ GM
INVESCO QQQ TRUST SERIES 1	USD	308.88	1.51%	-1.74%	-5.42%	-1.61%	NASDAQ GM
ISHARES NASDAQ BIOTECHNOLOGY	USD	150.15	2.05%	-4.32%	-8.39%	-0.88%	NASDAQ GM
ENERGY SELECT SECTOR SPDR	USD	52.95	3.74%	9.97%	26.86%	39.71%	NYSE Arca
PROSHARES ULTRA VIX ST FUTUR	USD	8.72	-10.56%	-8.60%	-19.48%	-18.12%	Cboe BZX
UNITED STATES OIL FUND LP	USD	44.44	3.18%	7.58%	18.70%	34.63%	NYSE Arca
ISHARES MSCI BRAZIL ETF	USD	32.99	2.07%	3.42%	-8.44%	-11.01%	NYSE Arca
SPDR S&P OIL & GAS EXP & PR	USD	90.00	3.94%	11.79%	29.35%	53.85%	NYSE Arca
UTILITIES SELECT SECTOR SPDR	USD	59.68	1.63%	2.26%	-4.91%	-4.82%	NYSE Arca
ISHARES US REAL ESTATE ETF	USD	86.33	1.27%	-1.17%	-1.42%	0.79%	NYSE Arca
SPDR S&P BIOTECH ETF	USD	138.77	2.47%	-6.24%	-13.84%	-1.43%	NYSE Arca
ISHARES IBOXX INVESTMENT GRA	USD	129.76	-0.13%	-1.90%	-3.82%	-6.06%	NYSE Arca
ISHARES JP MORGAN USD EMERGI	USD	108.60	-0.02%	-1.30%	-4.54%	-6.31%	NASDAQ GM
REAL ESTATE SELECT SECT SPDR	USD	36.84	1.15%	-1.34%	-2.02%	0.77%	NYSE Arca
ISHARES CHINA LARGE-CAP ETF	USD	48.85	1.03%	-0.45%	-5.24%	5.21%	NYSE Arca
CONSUMER STAPLES SPDR	USD	64.70	2.21%	2.21%	0.03%	-4.08%	NYSE Arca
VANECK JR GOLD MINERS	USD	45.61	1.20%	-0.33%	-9.54%	-15.91%	NYSE Arca
SPDR BBG BARC HIGH YIELD BND	USD	108.20	0.29%	0.04%	-0.62%	-0.68%	NYSE Arca
VANGUARD REAL ESTATE ETF	USD	86.86	1.09%	-1.15%	-0.39%	2.27%	NYSE Arca
GRAYSCALE BITCOIN TRUST BTC	USD	43.80	5.80%	1.39%	15.08%	36.88%	OTC US

USA Treasury Bonds Yield Curve (%)



Source: Bloomberg

Capital Market Laboratory Coordinator: Economist Bruno Bellido
Collaboration: Piero Best, Maria Camarena, Alonso Stephen Hernández and Adrian Paredes
email: pulsobursatil@ulima.edu.pe
facebook: www.facebook.com/pulsobursatil

The content of this document is just for informational purposes. The information and opinions expressed should not be considered as recommendations for future decisions. Under any circumstances, the Capital Market Laboratory of University of Lima will be responsible for the use of the statements in this document.

LIMA

Stocks

Ticker	Currency	Price	1D*	5D*	30D*	YTD*	Frequency	Volume (US\$)	Beta	Dividend Yield (%)	Price Earning	Market Cap. (M US\$)	Economic Sector*	Index Weight
▲ ALICORC1 PE**	S/.	8.21	0.54%	-0.40%	-1.51%	-0.39%	100.00%	269,431	0.66	3.05	21.44	1,896.64	Industrial	3.53%
- ATACOCB1 PE**	S/.	0.16	0.63%	-4.73%	0.63%	16.67%	90.00%	8,544	1.09	0.00	-	41.21	Mining	1.02%
▲ BACKUSI1 PE**	S/.	23.25	0.00%	0.22%	2.42%	15.38%	100.00%	86,522	0.54	1.51	11.15	8,610.02	Industrial	0.82%
▼ BAP PE**	US\$	154.60	-0.96%	-3.62%	-0.90%	-3.74%	100.00%	1,319,963	1.64	5.69	-	14,591.51	Diverse	5.82%
▲ BVN PE**	US\$	11.48	2.50%	4.27%	7.29%	-4.33%	100.00%	575,338	1.23	0.00	-	3,164.28	Mining	5.88%
▼ CASAGRC1 PE**	S/.	5.86	-3.62%	-3.93%	-0.68%	23.37%	95.00%	51,063	0.60	3.86	10.52	133.73	Agricultural	1.31%
▼ BBVAC1 PE**	S/.	2.40	-0.41%	-2.83%	0.00%	10.60%	100.00%	141,745	0.67	3.60	25.12	4,245.46	Finance	2.85%
- CORAREI1 PE**	S/.	1.15	0.00%	4.55%	10.58%	29.21%	100.00%	48,559	0.60	6.07	6.86	419.86	Industrial	1.72%
▼ CPACASC1 PE**	S/.	5.92	-1.17%	-2.15%	0.00%	11.70%	100.00%	136,727	0.59	3.89	42.29	732.22	Industrial	2.38%
▲ CVERDEC1 PE**	US\$	26.13	2.07%	0.50%	17.97%	24.90%	100.00%	274,217	0.89	0.00	42.47	9,146.96	Mining	5.25%
▲ ENGEPEC1 PE**	S/.	2.60	1.17%	3.17%	11.11%	30.00%	90.00%	63,210	0.49	8.46	15.89	1,999.66	Public Services	1.44%
▲ ENDISPC1**	S/.	5.90	-2.48%	0.00%	-3.28%	9.26%	85.00%	1,678	0.49	0.00	13.83	1,020.73	Public Services	0.98%
▲ FERREYC1 PE**	S/.	2.14	-0.47%	1.90%	4.39%	22.99%	100.00%	643,662	0.58	3.58	14.23	565.69	Diverse	4.90%
▲ AENZAC1 PE**	S/.	1.75	6.06%	4.17%	-2.78%	0.57%	100.00%	262,795	0.80	0.00	-	413.40	Diverse	4.05%
▼ IFS PE**	US\$	31.30	-6.01%	-9.28%	-0.76%	1.16%	100.00%	812,131	1.32	5.59	34.80	3,613.51	Diverse	7.22%
▲ INRETC1 PE**	US\$	45.10	1.33%	1.35%	7.38%	15.05%	100.00%	3,262,875	0.61	1.25	56.54	4,636.61	Diverse	5.28%
- LUSURC1 PE**	S/.	22.00	0.00%	-5.17%	-21.43%	-13.73%	90.00%	7,731	0.49	0.00	21.59	2,902.45	Public Services	1.81%
▼ MINSUR1 PE**	S/.	2.90	-2.03%	-6.45%	27.75%	56.76%	100.00%	72,669	0.79	0.00	77.59	2,265.16	Mining	3.09%
▼ PML PE**	US\$	0.14	-0.69%	-10.00%	15.20%	35.85%	85.00%	14,523	1.48	0.00	-	38.04	Mining	2.12%
▲ RELAPAC1 PE**	S/.	0.13	1.59%	-1.54%	70.67%	85.51%	100.00%	17,442	0.41	0.00	-	288.50	Industrial	2.12%
▲ SCCO PE**	US\$	72.00	0.14%	0.94%	4.96%	9.26%	100.00%	157,921	0.87	2.36	33.47	55,661.28	Mining	2.14%
▲ SIDERC1 PE**	S/.	1.02	0.99%	0.99%	8.51%	20.00%	100.00%	5,527	0.84	33.55	12.12	339.33	Industrial	1.43%
▲ TV PE**	US\$	0.14	7.69%	-10.83%	-12.50%	-4.76%	100.00%	129,491	1.51	0.00	-	138.47	Mining	2.93%
▼ UNACEMC1 PE**	S/.	1.77	-4.84%	-3.80%	0.57%	14.19%	100.00%	120,311	0.81	0.73	38.77	871.87	Industrial	3.00%
▲ VOLCABC1 PE**	S/.	0.82	5.13%	6.49%	13.89%	57.69%	100.00%	3,261,490	0.89	0.00	-	905.66	Mining	5.90%
- NEXAPEC1 PE**	S/.	3.90	0.00%	-1.27%	16.42%	37.81%	100.00%	14,245	1.07	0.00	-	1,395.63	Mining	1.56%

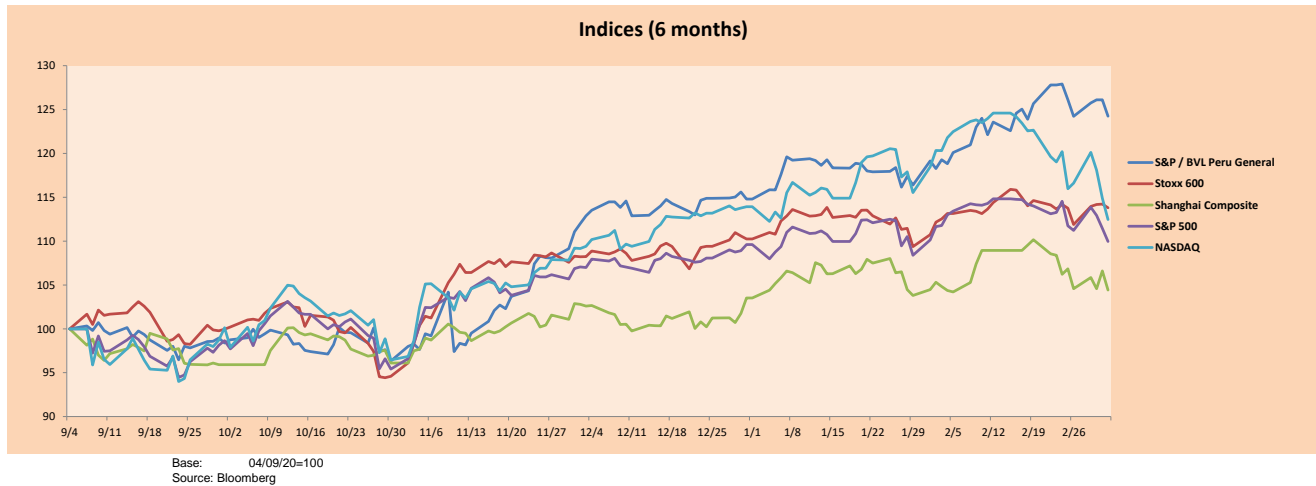
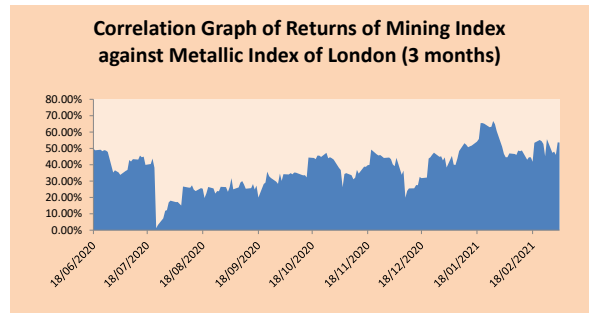
Quantity of shares: 26
Source: Bloomberg, Economática
* Bloomberg Industry Classification System
** PER is used in the stock market and original currency of the instrument
*Legend: Variation 1D: 1 Day; 5D: 5 Days, 1M: 1 Month; YTD: Var.% 12/31/20 to date

Sectorial Indices

	Close	1D*	5D*	30D*	YTD*	Beta
▲ S&P/BVLMining	437.78	1.17%	2.42%	9.29%	12.27%	0.91
▲ S&P/BVLConsumer	1,264.62	0.43%	1.61%	4.57%	16.17%	0.38
▼ S&P/BVLIndustrials	218.44	-0.58%	0.11%	2.53%	14.63%	0.50
▼ S&P/BVLFinancials	1,024.43	-1.27%	-3.06%	0.47%	-0.92%	1.75
▼ S&P/BVLConstruction	231.33	-0.66%	-0.61%	1.05%	10.62%	0.53
▼ S&P/BVLPublicSvcs	644.59	-0.07%	1.05%	-4.72%	4.96%	0.14
▼ S&P/BVLElectricUtil	629.28	-0.07%	1.05%	-4.72%	4.96%	0.14

S&P/BVLConstructionTRPEN

*Legend: Variation 1D: 1 Day; 5D: 5 Days, 1M: 1 Month; YTD: Var.% 12/31/20 to date



Capital Market Laboratory Coordinator: Economist Bruno Bellido
Collaboration: Piero Best, Maria Camarena, Alonso Stephen Hernández and Adrian Paredes
email: pulsoBursatil@ulima.edu.pe
facebook: www.facebook.com/pulsoBursatil.ul

The content of this document is just for informational purposes. The information and opinions expressed should not be consider as recommendations for future decisions. Under any circumstances, the Capital Market Laboratory of University of Lima will be responsible for the use of the statements in this document.

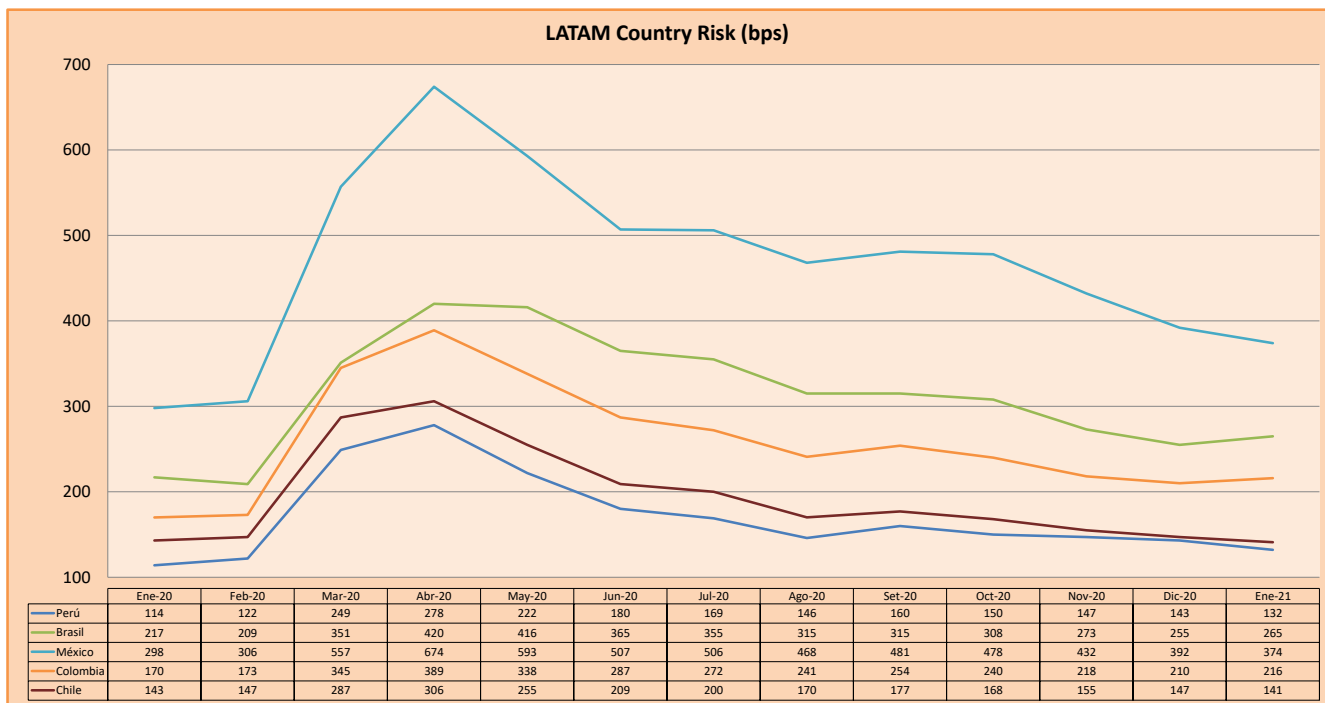
SOVEREIGN RATING

RISK RATINGS			
Moody's	S&P	Fitch	
Aaa	AAA	AAA	Prime
Aa1	AA+	AA+	High credit quality
Aa2	AA	AA	
Aa3	AA-	AA-	
A1	A+	A+	Medium-high grade, with low credit risk
A2	A	A	
A3	A-	A-	
Baa1	BBB+	BBB+	Moderate Credit Risk
Baa2	BBB	BBB	
Baa3	BBB-	BBB-	
Ba1	BB+	BB+	It has speculative elements and it is subject to substantial credit risk
Ba2	BB	BB	
Ba3	BB-	BB-	
B1	B+	B+	It is considered speculative and it has high credit risk
B2	B	B	
B3	B-	B-	
Caa1	CCC+		Bad credit conditions and it is subject to high credit risk
Caa2	CCC		
Caa3	CCC-	CCC	
Ca	C		Very close to default or in default
		DDD	
C	D	DD D	

Source: Bloomberg

Latin America Credit Rating			
Clasificadora de riesgo			
Country	Moody's	Fitch	S&P
Peru	A3	BBB+	BBB+
México	Ba2	BB-	BB-
Venezuela	C	WD	SD
Brazil	Ba2	BB-	BB-
Colombia	Baa2	BBB-	BBB-
Chile	A1	A-	A+
Argentina	Ca	WD	CCC+
Panama	Baa1	BBB-	BBB

Source: Bloomberg



Source: BCRP

Capital Market Laboratory Coordinator: Economist Bruno Bellido
Collaboration: Piero Best, Maria Camarena, Alonso Stephen Hernández and Adrian Paredes
email: pulsohorsatil@ulima.edu.pe
facebook: www.facebook.com/pulsohorsatil.ul

The content of this document is just for informational purposes. The information and opinions expressed should not be considered as recommendations for future decisions. Under any circumstances, the Capital Market Laboratory of University of Lima will be responsible for the use of the statements in this document.