

PULSO BURSÁTIL

FACULTAD DE CIENCIAS EMPRESARIALES Y ECONÓMICAS
CARRERA DE ECONOMÍA
LABORATORIO DE MERCADO DE CAPITALES

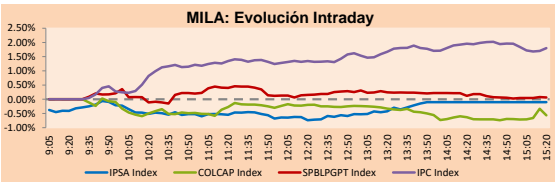


MILA

Lima, March 8, 2021

Main Indexes	Close	1 D	5 D	1 M	YTD	Cap. Burs. (US\$ bill)
▼ IPSA (Chile)	4,712.95	-0.02%	1.63%	5.03%	12.83%	127.26
▲ IGPA (Chile)	23,785.71	0.01%	1.63%	5.05%	13.23%	157.45
▼ COLSC (Colombia)	1,051.27	-0.34%	-0.51%	-1.84%	-0.73%	5.76
▼ COLCAP (Colombia)	1,336.98	-0.58%	-1.38%	-3.35%	-7.02%	80.17
▲ S&P/BVL (Perú)*	22,565.44	0.07%	-1.07%	2.84%	8.37%	112.71
▲ S&P/BVL SEL (Perú)	598.79	-0.24%	-0.88%	0.15%	8.59%	90.21
▲ S&P/BVL LIMA 25	29,460.32	-0.02%	-0.99%	1.26%	16.91%	111.70
▼ IPC (México)	47,075.41	1.58%	5.12%	6.51%	6.83%	273.19
▼ S&P MILA 40	544.30	-0.12%	-0.76%	1.85%	1.81%	5,871.76

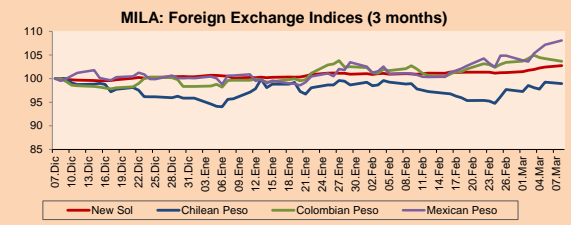
*Legend: Variation 1D: 1 day; 5D: 5 days; 1M: 1 Month; YTD: Var% 12/31/20 to date



Source: Bloomberg

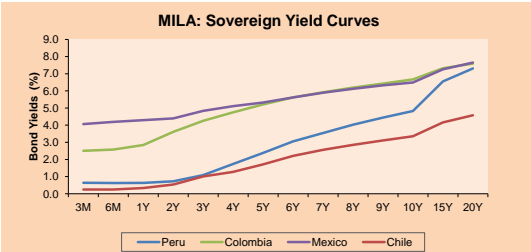
Currency	Price	1D*	5D*	30 D*	YTD*
▲ New Sol (PEN)	3,7023	0.31%	1.26%	1.77%	2.33%
▼ Chilean Peso (CLP)	734.70	-0.31%	1.74%	-0.32%	3.22%
▼ Colombian Peso (COP)	3,615.32	-0.55%	-0.04%	1.92%	5.41%
▲ Mexican Peso (MXN)	21.49	0.85%	4.05%	7.00%	7.93%

*Legend: Variation 1D: 1 day; 5D: 5 days; 1M: 1 Month; YTD: Var% 12/31/20 to date



Base: 07/12/20=100
Source: Bloomberg

Fixed Income	Currency	Price	Bid Yield (%)	Ask Yield (%)	Duration
PERU 7.35 07/21/25	USD	123.729	1.74	1.63	3.84
PERU 4.125 08/25/27	USD	111.228	2.28	2.21	5.79
PERU 8.75 11/21/33	USD	152.321	3.63	3.54	8.73
PERU 6.55 03/14/37	USD	133.012	3.81	3.76	10.33
PERU 5.625 11/18/2050	USD	129.179	3.97	3.92	16.32
CHILE 2.25 10/30/22	USD	102.635	0.74	0.52	1.61
CHILE 3.125 01/21/26	USD	107.88	1.49	1.40	4.56
CHILE 3.625 10/30/42	USD	101.775	3.53	3.49	15.30
COLOM 11.85 03/09/28	USD	158.296	2.78	2.55	5.39
COLOM 10.375 01/28/33	USD	158.816	4.21	3.97	7.99
COLOM 7.375 09/18/37	USD	128.991	4.86	4.77	10.37
COLOM 6.125 01/18/41	USD	115.623	4.92	4.85	12.32
MEX 4 10/02/23	USD	115.623	4.919	4.854	12.32
MEX5.55 01/45	USD	112.627	4.69	4.64	14.09



Source: Bloomberg

Equity

Largest gains	Exchange	Currency	Price	▲%
GRUPO F BANORT-O	Mexico	MXN	112.22	6.23
FIBRA TERRA	Mexico	MXN	31.60	6.22
CAP	Chile	CLP	11466.00	5.97
GRUPO MEXICO-B	Mexico	MXN	104.97	4.76
GRUPO TELEV-CPO	Mexico	MXN	32.67	3.55

Per Turnover	Exchange	Amount (US\$)
GRUPO F BANORT-O	Mexico	67,247,920
GRUPO MEXICO-B	Mexico	43,810,675
AMERICA MOVIL-L	Mexico	42,813,327
WALMART DE MEXIC	Mexico	34,111,268
SOQUIMICH-B	Chile	31,498,203

Largest losses	Exchange	Currency	Price	▼%
BANCO DAVIVIENDA	Colombia	COP	31800	-2.33
ECOPETROL	Colombia	COP	2347	-2.21
EMPRESAS COPEC	Chile	CLP	8362	-2.03
CENCOSUD SA	Chile	CLP	1431	-1.99
AERO DEL SURES-B	Mexico	MXN	356.84	-1.94

Per Volume	Exchange	Volume
ITAU CORPBANCA	Chile	470,098,739
BANCO SANTANDER	Chile	205,254,693
ENEL CHILE SA	Chile	111,965,934
ENEL AMERICAS SA	Chile	87,178,840
BANCO DE CHILE	Chile	67,911,963

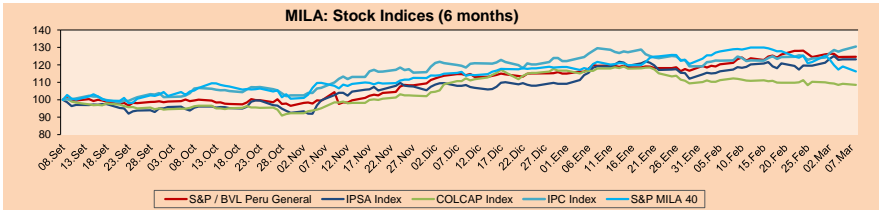
MILA

Peru: The General Index of the BVL ended today's session with a positive result of +0.07%. The index maintains an annual accumulated positive trend of +8.37% in local currency, while the adjusted return in dollars amounts to +5.90%. Then, the S&P / BVL Peru SEL varied by -0.24% while the S&P / BVL LIMA 25 by -0.02%. The PEN spot reached 5 / 3.7023. Headline: Copper falls as US stimulus fails to raise prices.

Chile: The IPSA index ended the day with a negative return of -0.02%. The sectors most affected during the session were Energy (-2.03%) and Information Technology (-1.81%). The worst performing stocks were Ripley Corporación SA (-3.39%) and Empresas COPEC SA (-2.03%). Headline: Exports in February show the greatest dynamism in the last 10 years.

Colombia: The COLCAP index closed today with a negative return of -0.58%. The most affected sectors during the day were Communication Services (-3.77%) and Energy (-2.08%). The worst performing stocks were Empresa de Telecomunicaciones (-3.77%) and Banco Davivienda SA (-2.33%). Headline: Colombian tax figures raise doubts and increase the risk of losing investment grade.

Mexico: The IPC index closed the day with a positive return of +1.58%. The sectors that benefited the most during the session were Health (+4.97%) and Real Estate (+4.24%). The stocks with the best performance were Grupo Financiero Banorte SAB (+6.23%) and Genomma Lab Internacional SA (+4.97%). Headline: Remittances offset severity of Mexico's slowdown in the year of the pandemic.

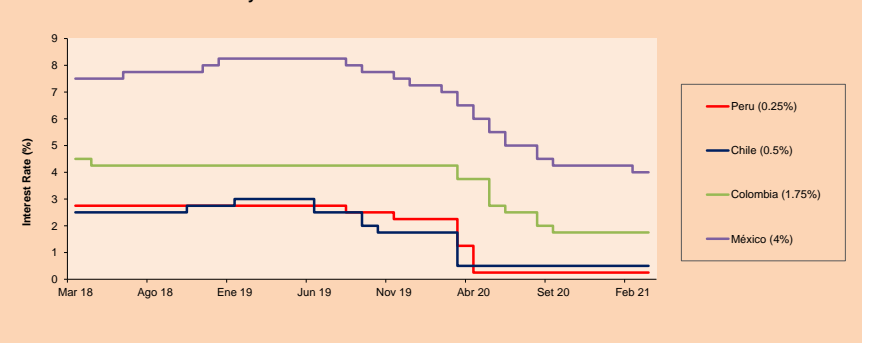


Base: 09/09/20=100
Source: Bloomberg

ETFs

ETFs	Curr.	Close	1D	5D	30 D	YTD	Exchange
▼ iShares MSCI All Peru Caped Index Fund	USD	35.76	-0.69%	-3.95%	-1.76%	3.11%	NYSE Arca
▼ iShares MSCI All Chile Caped Index Fund	USD	32.07	-0.83%	-1.14%	3.12%	6.16%	Cboe BZX
▲ Global X MSCI Colombia	USD	10.38	0.35%	1.46%	-0.86%	-8.63%	NYSE Arca
▲ iShares MSCI Mexico Capped	USD	41.86	0.62%	0.94%	-0.57%	-2.63%	NYSE Arca
▼ Vanguard FTSE Emerging Markets	USD	52.38	-2.69%	-5.06%	-6.86%	1.37%	NYSE Arca
▼ Vanguard MSCI Emerging Markets	USD	51.23	-2.60%	-5.01%	-6.00%	2.24%	NYSE Arca
▼ iShares Core MSCI Emerging Markets	USD	63.18	-2.56%	-4.91%	-6.25%	1.84%	NYSE Arca
▼ iShares JP Morgan Emerging Markets Bonds	USD	61.78	-1.33%	-2.54%	-2.97%	1.15%	Cboe BZX
▼ Morgan Stanley Emerging Markets Domestic	USD	5.89	-1.34%	-2.32%	-4.38%	-6.36%	New York

MILA: Policy Rate



Source: Bloomberg

Capital Market Laboratory Coordinator: Economist Bruno Bellido
Collaboration: Piero Best, Maria Camarena, Alonso Stephen Hernández and Adrian Paredes
email: pulsobursatil@ulima.edu.pe
facebook: www.facebook.com/pulsobursatil.ul

The content of this document is just for informational purposes. The information and opinions expressed should not be considered as recommendations for future decisions. Under any circumstances, the Capital Market Laboratory of University of Lima will be responsible for the use of the statements in this document.

PULSO BURSÁTIL

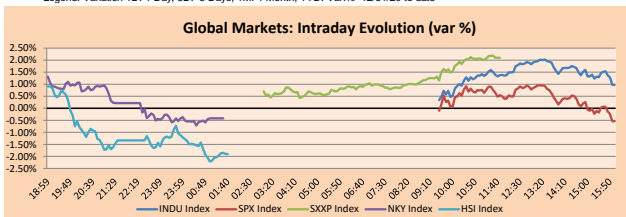
FACULTAD DE CIENCIAS EMPRESARIALES Y ECONÓMICAS
CARRERA DE ECONOMÍA
LABORATORIO DE MERCADO DE CAPITALES



WORLD

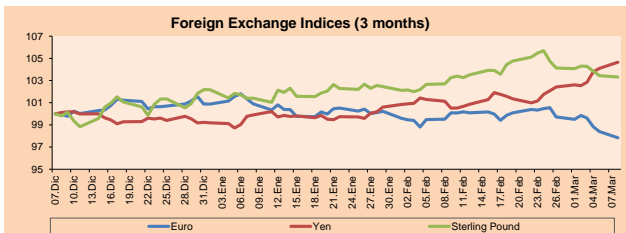
Main Indices	Close	1 D*	5 D*	1 M*	YTD*	Market Cap. (US\$ Mill.)
▲ Dow Jones (USA)	31,802.44	0.97%	0.85%	1.33%	3.91%	9,546,104
▼ Standard & Poor's 500 (EEUU)	3,821.35	-0.54%	-2.06%	-2.41%	1.74%	33,898,663
▲ NASDAQ Composite (USA)	12,609.16	-2.41%	-7.21%	-9.85%	-2.17%	21,047,364
▲ Stoxx EUROPE 600 (Europe)	417.25	2.10%	1.17%	1.66%	4.57%	9,668,183
▲ DAX (Germany)	14,380.91	3.31%	2.63%	2.63%	4.83%	1,104,853
▲ FTSE 100 (United Kingdom)	6,719.13	1.34%	1.98%	2.97%	4.07%	1,403,237
▲ CAC 40 (France)	5,902.99	2.08%	1.90%	3.72%	6.33%	1,618,527
▲ IBEX 35 (Spain)	8,444.20	1.90%	0.79%	4.24%	4.59%	467,953
▼ MSCI AC Asia Pacific Index	202.62	-1.65%	-3.66%	-6.22%	1.35%	25,699,366
▼ HANG SENG (Hong Kong)	28,540.83	-1.92%	-3.10%	-3.17%	4.81%	4,242,858
▼ SHANGHAI SE Comp. (China)	3,421.41	-2.30%	-3.66%	-5.05%	-1.49%	6,460,494
▼ NIKKEI 225 (Japan)	28,743.25	-0.42%	-3.10%	-2.33%	5.00%	3,921,063
▼ S&P / ASX 200 (Australia)	6,739.57	0.43%	-0.74%	-0.39%	3.15%	1,627,583
▼ KOSPI (South Korea)	2,996.11	1.58%	5.12%	-4.16%	2.89%	1,738,143

*Legend: Variation 1D: 1 Day; 5D: 5 Days; 1M: 1 Month; YTD: Var.% 12/31/20 to date



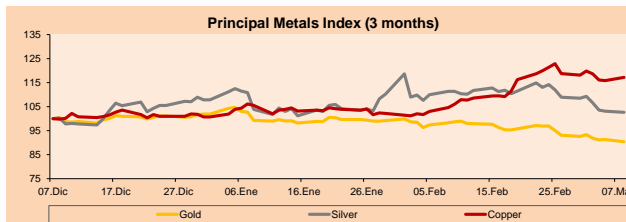
Currency	Price	1 D*	5 D*	1 M*	YTD*
▼ Euro	1.1847	-0.57%	-1.68%	-1.65%	-3.02%
▼ Yen	108.8900	0.54%	2.00%	3.32%	5.46%
▼ Sterling Pound	1.3824	-0.12%	-0.73%	0.65%	1.13%
▲ Yuan	6.5260	0.44%	0.93%	0.93%	-0.02%
▲ Hong Kong Dollar	7.7691	0.08%	0.17%	0.21%	0.21%
▲ Brazilian Real	5.8173	2.36%	3.25%	8.19%	11.90%
▲ Argentine Peso	90.5758	0.23%	0.54%	2.93%	7.64%

*Legend: Variation 1D: 1 Day; 5D: 5 Days; 1M: 1 Month; YTD: Var.% 12/31/20 to date



Commodities	Close	1 D*	5 D*	1 M*	YTD*
▼ Oro (US\$ Oz. T) (LME)	1,683.54	-1.01%	-2.41%	-7.20%	-11.32%
▼ Plata (US\$ Oz. T) (LME)	25.13	-0.47%	-5.43%	-6.66%	-4.83%
▲ Cobre (US\$ TM) (LME)	9,019.00	1.19%	-0.77%	13.78%	16.39%
▲ Zinc (US\$ TM) (LME)	2,762.00	0.30%	-1.30%	4.34%	1.20%
▲ Petróleo WTI (US\$ Barril) (NYM)	65.05	-1.57%	7.27%	14.73%	33.60%
▲ Estanho (US\$ TM) (LME)	26,703.00	1.13%	12.49%	11.80%	29.98%
▲ Plomo (US\$ TM) (LME)	1,958.00	-1.29%	-4.85%	-3.95%	-0.90%
▲ Azúcar #11 (US\$ Libra) (NYB-ICE)	16.20	-1.22%	-0.06%	3.18%	10.35%
▲ Cacao (US\$ TM) (NYB-ICE)	2,533.00	-0.51%	-4.02%	2.47%	-0.08%
▲ Café Arábica (US\$ TM) (NYB-ICE)	129.15	0.23%	-4.90%	1.97%	-0.77%

*Leyenda: Variación 1D: 1 Día; 5D: 5 Días; 1M: 1 Mes; YTD: Var.% 31/12/20 a la fecha



Base: 07/12/20=100
Source: Bloomberg

Equity

Germany (Stocks from DAX Index)					
Largest gains	Curr.	Price	▲%	Exchange	
LIN GY	EUR	216.2	6.40	Xetra	
CON GY	EUR	128.8	5.31	Xetra	
BMW GY	EUR	79.64	5.25	Xetra	
MTX GY	EUR	208	4.87	Xetra	

Europe (Stocks from STOXX EUROPE 600)					
Largest gains	Curr.	Price	▲%	Exchange	
URWV NA	GBP	70.58	8.32	EN Amsterdam	
OCL LN	GBP	1696.5	8.20	Londres	
LITP	EUR	21.9	7.60	EN Paris	
CNHI IM	EUR	13.16	7.56	Borsa Italiana	

Largest losses					
	Curr.	Price	▼%	Exchange	
BEI GY	EUR	85.44	-0.51	Xetra	
1COV GY	EUR	61.02	-0.39	Xetra	
RWE GY	EUR	31.5	0.19	Xetra	
MRK GY	EUR	130.35	0.19	Xetra	

Global Overview:

United States:

US markets ended today's session with mixed returns. The Dow Jones index hit an intraday record, but the big tech stocks that pushed Wall Street to record highs showed a big drop. The Nasdaq is down 10.6% since its record close on February 12, so stocks related to finance, restaurants and travel are on the rise due to expectations of recovery when the economy reopens, after the Saturday, the stimulus bill got approval from the United States Senate. President Joe Biden said he expected quick approval from the Democratic-controlled House of Representatives before he could sign it and send direct payments of \$1,400 to Americans. But prospects for higher government spending and a growing economy have stoked fears of a pick-up in inflation, pushing the benchmark 10-year Treasury yield to nearly a year high and weighing on tech stocks that depend on cheap finance to grow. In conclusion, the main indices S&P 500 -0.54%, and NASDAQ -2.41% ended lower while the DJIA +0.97% had a positive result.

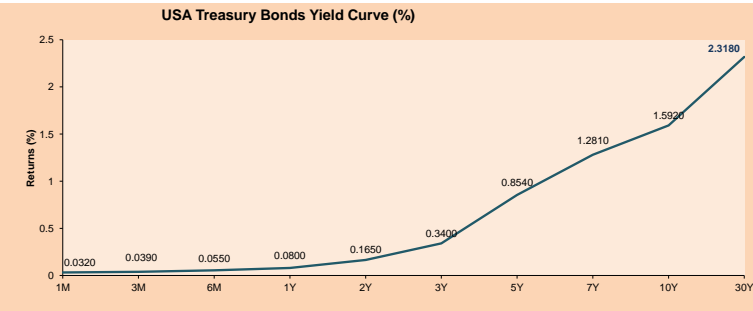
Europe:

European markets ended the day with positive results, following the approval of the 1.9 trillion dollar stimulus plan and the increase in the yield of 10-year U.S. Treasury bonds. European stocks received the Senate's approval of the economic stimulus package in an optimistic manner. As such, the pan-European Stoxx 600 posted its best one-day performance since early November, driven largely by the banking sector and automakers. In the UK, schools reopened their facilities to all students, taking the first step towards normalcy as coronavirus infection rates fall. In Germany, the DAX index hit a new all-time high, driven mainly by gains on Wall Street stock markets. In stock market shares, the Reuters portal highlights the following banking sector stocks: Banco de Sabadell +6.98%, HSBC +1.26%, Banco Santander +2.50% and ING Groep +4.74%. In turn, the oil industry got a big boost from the rise in the price of crude oil: Royal Dutch Shell +0.36%. Thus, the STOXX 600 +2.10%, DAX +3.31%, CAC 40 +2.08%, FTSE 100 +1.34% and FTSE MIB +3.12% finished higher.

Asia:

Major Asian markets ended today's session mostly lower after the U.S. Senate passed the \$1.9 trillion stimulus bill increasing inflation concerns. Thus in China the HANG SENG closed the session lower dragged down by the Technology -7.88% and Personal Care -6.67% sectors after the economic growth target was set lower than expected in Beijing, raising concerns about tightening policies to curb high valuations in the technology sector mainly. Similarly, in South Korea, stocks reversed course to close lower dragged by the growth of 3-year Korean treasury bond yields to 1.121%, while the 10-year reached 2.00%. Finally, the Australian index closed with gains driven by the financial sector +1.38% and travel-related stocks. Thus, NIKKEI -0.42%, HANG SENG -1.92%, CSI 300 -3.47%, Shanghai Comp -1.92%, KOSPI -1.00% and S&P/ASX 200 +0.81% ended today's session mostly lower.

ETFs	Curr.	Close	1D	5D	30 D	YTD	Exchange
SPDR S&P 500 ETF TRUST	USD	381.72	-0.50%	-2.02%	-1.54%	2.10%	NYSE Arca
ISHARES MSCI EMERGING MARKET	USD	52.38	-2.69%	-5.06%	-6.86%	1.37%	NYSE Arca
ISHARES IBOXX HIGH YLD CORP	USD	85.99	-0.73%	-1.27%	-1.75%	-1.50%	NYSE Arca
FINANCIAL SELECT SECTOR SPDR	USD	34.14	1.28%	2.46%	10.52%	15.81%	NYSE Arca
VANECK GOLD MINERS	USD	31.39	-1.23%	1.59%	-9.30%	-12.85%	NYSE Arca
ISHARES RUSSELL 2000 ETF	USD	218.74	0.47%	-3.24%	-1.31%	11.57%	NYSE Arca
SPDR GOLD SHARES	USD	157.49	-1.04%	-2.50%	-7.26%	-11.70%	NYSE Arca
ISHARES 20+ YEAR TREASURY BO	USD	137.83	-0.78%	-2.29%	-6.89%	-12.62%	NASDAQ GM
INVESCO QQQ TRUST SERIES 1	USD	299.94	-2.83%	-7.31%	-9.48%	-4.40%	NASDAQ GM
ISHARES NASDAQ BIOTECHNOLOGY	USD	147.23	-1.94%	-7.78%	-12.91%	-2.81%	NASDAQ GM
ENERGY SELECT SECTOR SPDR	USD	53.05	0.19%	7.39%	24.65%	39.97%	NYSE Arca
PROSHARES ULTRA VIX ST FLUTUR	USD	8.92	-0.93%	-2.71%	-11.24%	-16.24%	Cboe BZX
UNITED STATES OIL FUND LP	USD	43.50	-2.12%	7.14%	13.90%	31.78%	NYSE Arca
ISHARES MSCI BRAZIL ETF	USD	31.04	-5.91%	-2.51%	-14.33%	-16.27%	NYSE Arca
SPDR S&P OIL & GAS EXP & PR	USD	88.68	-1.47%	7.13%	26.67%	51.59%	NYSE Arca
UTILITIES SELECT SECTOR SPDR	USD	60.52	1.41%	1.46%	-4.83%	-3.48%	NYSE Arca
ISHARES US REAL ESTATE ETF	USD	87.04	0.82%	-0.81%	-1.36%	1.62%	NYSE Arca
SPDR S&P BIOTECH ETF	USD	134.93	-2.77%	-11.00%	-19.10%	-4.16%	NYSE Arca
ISHARES IBOXX INVESTMENT GRA	USD	128.55	-0.93%	-2.71%	-4.63%	-6.94%	NYSE Arca
ISHARES JIP MORGAN USD EMERGI	USD	106.72	-1.73%	-3.24%	-6.57%	-7.93%	NASDAQ GM
REAL ESTATE SELECT SECT SPDR	USD	37.02	0.49%	-0.96%	-2.42%	1.26%	NYSE Arca
ISHARES CHINA LARGE-CAP ETF	USD	47.13	-3.52%	-6.43%	-8.82%	1.51%	NYSE Arca
CONSUMER STAPLES SPDR	USD	64.98	0.43%	1.63%	-1.19%	-3.66%	NYSE Arca
VANECK JR GOLD MINERS	USD	44.70	-2.00%	-0.64%	-11.26%	-17.59%	NYSE Arca
SPDR BBG BARC HIGH YIELD BND	USD	107.44	-0.70%	-1.27%	-1.67%	1.38%	NYSE Arca
VANGUARD REAL ESTATE ETF	USD	87.61	0.86%	-0.74%	-0.57%	3.16%	NYSE Arca
GRAYSCALE BITCOIN TRUST BTC	USD	45.40	3.65%	-0.92%	19.85%	41.88%	OTC US



Source: Bloomberg

Capital Market Laboratory Coordinator: Economist Bruno Bellido
Collaboration: Piero Best, Maria Camarena, Alonso Stephen Hernandez and Adrian Paredes
email: pulsobursatil@ulima.edu.pe
facebook: www.facebook.com/pulsobursatil

LIMA

Stocks

Ticker	Currency	Price	1D*	5D*	30D*	YTD*	Frequency	Volume (US\$)	Beta	Dividend Yield (%)	Price Earning	Market Cap. (M US\$)	Economic Sector*	Index Weight
▼ ALICORC1 PE**	S/.	8.10	-0.34%	-0.51%	-1.84%	-0.73%	100.00%	119,536	0.66	3.09	21.15	1,865.68	Industrial	3.53%
▼ ATACOB1 PE**	S/.	0.16	-0.62%	-5.88%	0.00%	15.94%	90.00%	3,350	1.09	0.00	-	40.83	Mining	1.02%
- BACKUS1 PE**	S/.	23.25	0.00%	-3.13%	2.42%	15.38%	100.00%	5,074	0.54	1.51	11.15	8,583.74	Industrial	0.82%
▼ BAP PE**	US\$	152.77	-1.18%	-4.22%	-3.31%	-4.88%	100.00%	218,286	1.65	5.76	-	14,418.79	Diverse	5.82%
▼ BVN PE**	US\$	11.45	-0.26%	2.23%	9.57%	-4.58%	95.00%	28,027	1.23	0.00	-	3,156.02	Mining	5.88%
▲ CASAGRC1 PE**	S/.	5.90	0.68%	-3.28%	-0.84%	24.21%	90.00%	80,648	0.61	3.83	10.59	134.24	Agricultural	1.31%
▼ BBVAC1 PE**	S/.	2.39	-0.42%	-3.24%	-1.65%	10.14%	100.00%	109,704	0.68	3.61	25.01	4,214.87	Finance	2.85%
- CORARE1 PE**	S/.	1.15	0.00%	3.60%	10.58%	29.21%	100.00%	271,098	0.59	6.07	6.86	418.58	Industrial	1.72%
▼ CPACASC1 PE**	S/.	5.89	-0.51%	-3.28%	-2.16%	11.13%	100.00%	120,707	0.59	3.90	42.07	726.55	Industrial	2.38%
▼ CVERDEC1 PE**	US\$	25.80	-1.26%	-4.44%	14.67%	23.33%	100.00%	150,530	0.90	0.00	41.94	9,031.44	Mining	5.25%
- ENGEPEC1 PE**	S/.	2.60	0.00%	3.17%	11.59%	30.00%	85.00%	5,195	0.49	8.46	15.89	1,993.56	Public Services	1.44%
- ENDISPC1**	S/.	5.90	0.00%	0.00%	-2.48%	9.26%	75.00%	1,673	0.49	0.00	13.83	1,017.62	Public Services	0.98%
- FERREYC1 PE**	S/.	2.14	0.00%	0.47%	5.94%	22.99%	100.00%	971,297	0.59	3.58	14.23	563.96	Diverse	4.90%
- AENZAC1 PE**	S/.	1.75	0.00%	2.34%	-1.13%	0.57%	95.00%	154,079	0.80	0.00	-	412.14	Diverse	4.05%
▲ IFS PE**	US\$	31.80	1.60%	-7.15%	-0.62%	2.78%	100.00%	10,746	1.32	5.50	35.47	3,671.24	Diverse	7.22%
- INRETC1 PE**	US\$	45.10	0.00%	0.22%	5.37%	15.05%	100.00%	1,865,201	0.62	1.25	56.74	4,636.61	Diverse	5.28%
▼ LUSURC1 PE**	S/.	21.50	-2.27%	-2.27%	-23.21%	-15.69%	85.00%	1,324	0.49	3.25	21.10	2,827.82	Public Services	1.81%
▼ MINSUR1 PE**	S/.	2.83	-2.41%	-6.29%	25.78%	52.97%	95.00%	243,443	0.79	0.00	75.46	2,203.74	Mining	3.09%
- PML PE**	US\$	0.14	0.00%	-7.69%	13.39%	35.85%	85.00%	5,064	1.48	0.00	-	38.04	Mining	2.12%
▲ RELAPAC1 PE**	S/.	0.13	0.78%	-1.53%	72.00%	86.96%	100.00%	34,671	0.41	0.00	-	289.87	Industrial	2.12%
- SCCO PE**	US\$	73.37	1.90%	-2.07%	2.50%	11.34%	95.00%	59,608	0.87	2.32	34.11	56,720.39	Mining	2.14%
- SIDERC1 PE**	S/.	1.02	0.00%	0.00%	7.37%	20.00%	95.00%	5,510	0.84	0.00	12.12	338.30	Industrial	1.43%
▲ TV PE**	US\$	0.14	0.71%	-7.24%	-11.88%	-4.08%	100.00%	64,617	1.51	0.00	-	139.46	Mining	2.93%
▲ UNACEMC1 PE**	S/.	1.80	1.69%	-2.17%	3.45%	16.13%	100.00%	162,372	0.81	0.72	39.43	883.95	Industrial	3.00%
- VOLCABC1 PE**	S/.	0.82	0.00%	2.50%	13.89%	57.69%	100.00%	680,919	0.89	0.00	-	902.90	Mining	5.90%
▼ NEXAPEC1 PE**	S/.	3.88	-0.51%	-3.00%	12.14%	37.10%	95.00%	23,677	1.07	0.00	-	1,384.29	Mining	1.56%

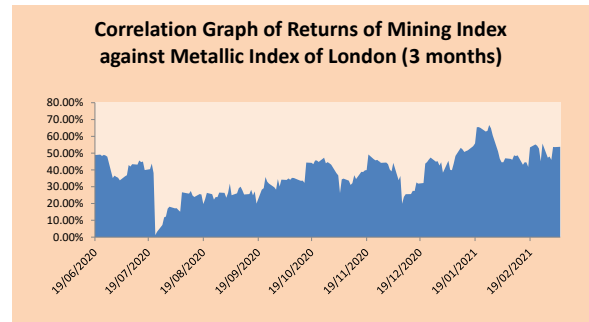
Quantity of shares: 26
Source: Bloomberg, Economática
* Bloomberg Industry Classification System
** PER is used in the stock market and original currency of the instrument
*Legend: Variation 1D: 1 Day; 5D: 5 Days; 1M: 1 Month; YTD: Var.% 12/31/20 to date

Sectorial Indices

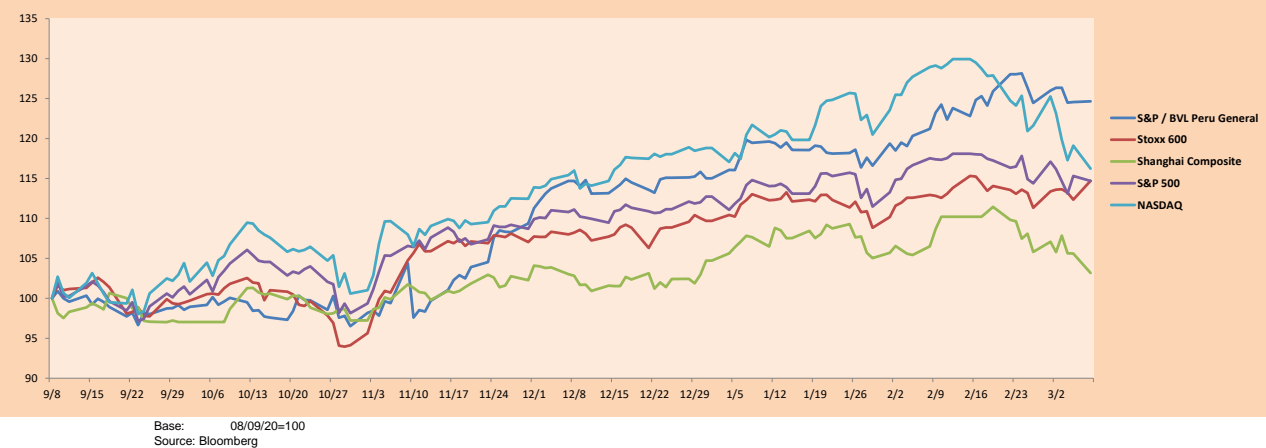
	Close	1D*	5D*	30D*	YTD*	Beta
▲ S&P/BVLMining	442.80	1.15%	-0.15%	8.38%	13.55%	0.90
▼ S&P/BVLConsumer	1,260.24	-0.35%	-0.32%	2.69%	15.76%	0.38
▲ S&P/BVLIndustrials	219.12	0.31%	-0.43%	3.29%	14.99%	0.51
▼ S&P/BVLFinancials	1,018.55	-0.57%	-3.27%	-1.24%	-1.49%	1.76
▲ S&P/BVLConstruction	232.33	0.43%	-0.80%	1.47%	11.10%	0.55
- S&P/BVLPublicSvcs	644.59	0.00%	1.05%	-4.28%	4.96%	0.14
- S&P/BVLElectricUtil	629.28	0.00%	1.05%	-4.28%	4.96%	0.14

S&P/BVLConstructionTRPEN

*Legend: Variation 1D: 1 Day; 5D: 5 Days; 1M: 1 Month; YTD: Var.% 12/31/20 to date



Indices (6 months)



Capital Market Laboratory Coordinator: Economist Bruno Bellido
Collaboration: Piero Best, Maria Camarena, Alonso Stephen Hernández and Adrian Paredes
email: pulsohorsatil@ulima.edu.pe
facebook: www.facebook.com/pulsohorsatil.ul

SOVEREIGN RATING

RISK RATINGS

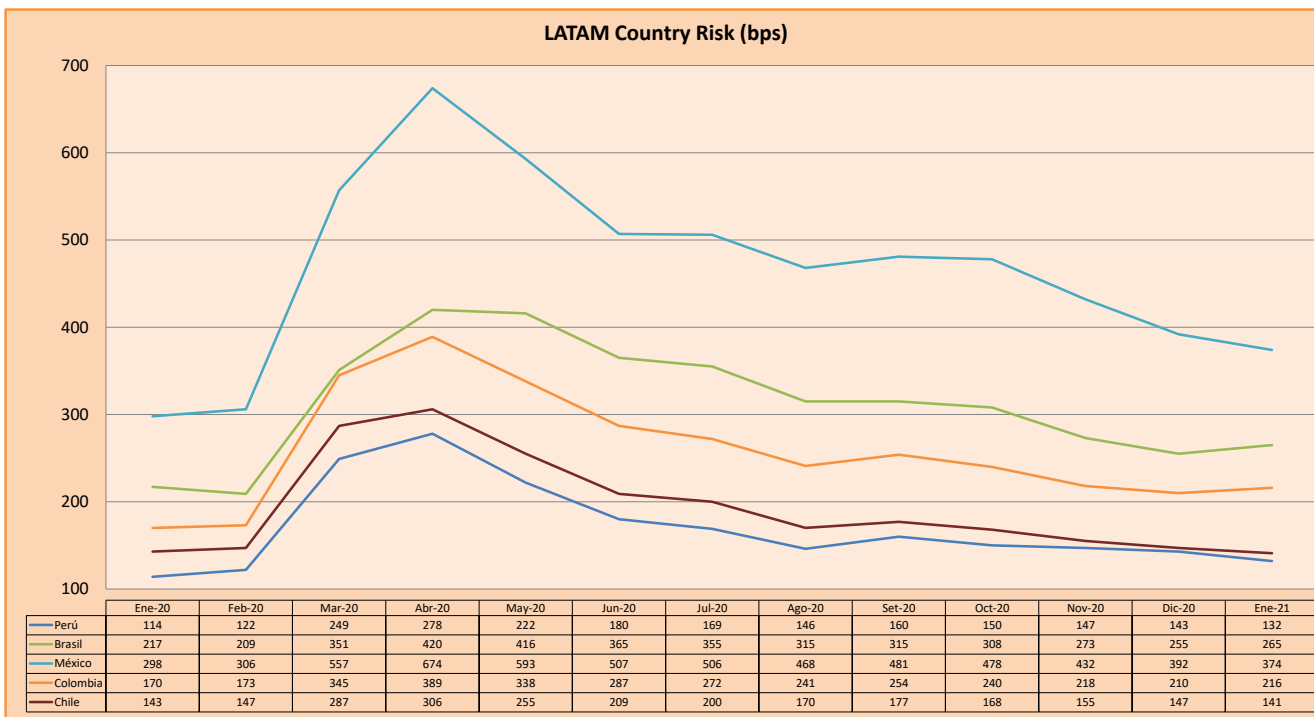
Moody's	S&P	Fitch	
Aaa	AAA	AAA	Prime
Aa1	AA+	AA+	High credit quality
Aa2	AA	AA	
Aa3	AA-	AA-	
A1	A+	A+	Medium-high grade, with low credit risk
A2	A	A	
A3	A-	A-	
Baa1	BBB+	BBB+	Moderate Credit Risk
Baa2	BBB	BBB	
Baa3	BBB-	BBB-	
Ba1	BB+	BB+	It has speculative elements and it is subject to substantial credit risk
Ba2	BB	BB	
Ba3	BB-	BB-	
B1	B+	B+	It is considered speculative and it has high credit risk
B2	B	B	
B3	B-	B-	
Caa1	CCC+		Bad credit conditions and it is subject to high credit risk
Caa2	CCC		
Caa3	CCC-	CCC	
Ca	C		Very close to default or in default
		DDD	
C	D	DD D	

Source: Bloomberg

Latin America Credit Rating			
Clasificadora de riesgo			
Country	Moody's	Fitch	S&P
Peru	A3	BBB+	BBB+
México	Ba2	BB-	BB-
Venezuela	C	WD	SD
Brazil	Ba2	BB-	BB-
Colombia	Baa2	BBB-	BBB-
Chile	A1	A-	A+
Argentina	Ca	WD	CCC+
Panama	Baa1	BBB-	BBB

Source: Bloomberg

LATAM Country Risk (bps)



Source: BCRP

Capital Market Laboratory Coordinator: Economist Bruno Bellido
Collaboration: Piero Best, Maria Camarena, Alonso Stephen Hernández and Adrian Paredes
email: pulsobursatil@ulima.edu.pe
facebook: www.facebook.com/pulsobursatil.ul