

# PULSO BURSÁTIL

FACULTAD DE CIENCIAS EMPRESARIALES Y ECONÓMICAS  
CARRERA DE ECONOMÍA  
LABORATORIO DE MERCADO DE CAPITALES

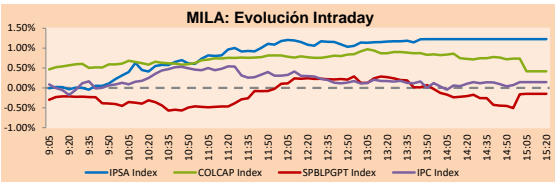


## MILA

Lima, March 24, 2021

Main Indexes	Close	1 D	5 D	1 M	YTD	Cap. Burs. (US\$ bill)
▲ IPSA (Chile)	4,842.26	0.82%	-1.37%	5.85%	15.92%	132.22
▲ IGPA (Chile)	24,367.62	0.70%	-1.37%	5.44%	16.00%	158.51
▼ COLSC (Colombia)	1,046.24	-0.24%	-0.63%	-1.61%	-1.20%	5.43
▲ COLCAP (Colombia)	1,325.33	0.42%	-1.84%	-0.78%	-7.83%	79.57
▼ S&P/BVL (Perú)*	21,497.13	-0.15%	-4.22%	-6.02%	3.24%	107.01
▼ S&P/BVL SEL (Perú)	568.61	-0.59%	-4.55%	-5.84%	3.12%	93.13
▼ S&P/BVL LIMA 25	28,680.68	-0.40%	-3.22%	-3.63%	13.82%	106.03
▲ IPC (México)	46,703.14	0.09%	-2.05%	5.40%	5.98%	283.08
▲ S&P MILA 40	543.25	0.16%	-3.57%	-0.61%	1.61%	5,928.23

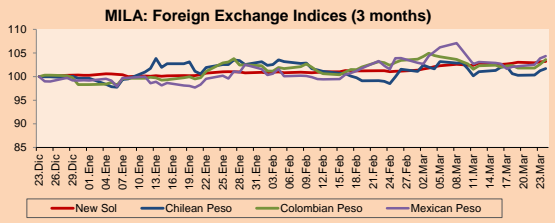
\*Legend: Variation 1D: 1 day; 5D: 5 days; 1M: 1 Month; YTD: Var% 12/31/20 to date



Source: Bloomberg

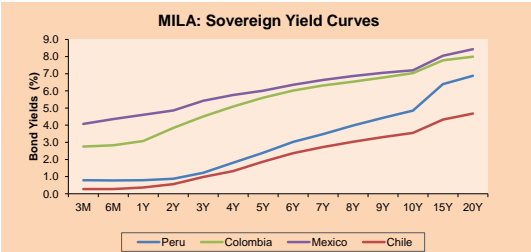
Currency	Price	1D*	5D*	30 D*	YTD*
▲ New Sol (PEN)	3,7236	0.08%	0.53%	1.95%	2.92%
▲ Chilean Peso (CLP)	726.50	0.46%	-0.39%	2.59%	2.07%
▲ Colombian Peso (COP)	3,614.09	0.98%	1.31%	0.45%	5.38%
▲ Mexican Peso (MXN)	20.94	0.45%	2.65%	1.01%	5.16%

\*Legend: Variation 1D: 1 day; 5D: 5 days; 1M: 1 Month; YTD: Var% 12/31/20 to date



Base: 23/12/20=100  
Source: Bloomberg

Fixed Income	Currency	Price	Bid Yield (%)	Ask Yield (%)	Duration
PERU 7.35 07/21/25	USD	124.256	1.58	1.47	3.80
PERU 4.125 08/25/27	USD	112.351	2.10	2.02	5.75
PERU 8.75 11/21/33	USD	156.465	3.30	3.23	8.73
PERU 6.55 03/14/37	USD	136.662	3.55	3.50	10.58
PERU 5.625 11/18/2050	USD	133.882	3.75	3.70	16.43
CHILE 2.25 10/30/22	USD	102.727	0.65	0.41	1.56
CHILE 3.125 01/21/26	USD	108.015	1.46	1.34	4.51
CHILE 3.625 10/30/42	USD	106.066	3.25	3.21	15.37
COLOM 11.85 03/09/28	USD	158.846	2.69	2.43	5.35
COLOM 10.375 01/28/33	USD	155.725	4.44	4.19	7.93
COLOM 7.375 09/18/37	USD	133.774	4.50	4.42	10.69
COLOM 6.125 01/18/41	USD	120.693	4.57	4.50	12.39
MEX 4 10/02/23	USD	120.693	4.566	4.496	12.39
MEX5.55 01/45	USD	117.541	4.39	4.33	14.17



Source: Bloomberg

### Equity

Largest gains	Exchange	Currency	Price	▲ %
VOLCAN CIA MIN-B	Peru	PEN	0.84	5.00
FALABELLA SA	Chile	CLP	3179.00	2.55
WALMART DE MEXIC	Mexico	MXN	64.28	2.47
ECOPETROL	Colombia	COP	2333.00	2.28
SMU SA	Chile	CLP	112.49	2.26

Per Turnover	Exchange	Amount (US\$)
CERVEZAS	Chile	56,207,020
GRUPO MEXICO-B	Mexico	43,494,900
WALMART DE MEXIC	Mexico	43,141,650
GRUPO F BANORT-O	Mexico	38,876,840
AMERICA MOVIL-L	Mexico	29,849,168

Largest losses	Exchange	Currency	Price	▼ %
GRUPO AEROPORTU	Mexico	MXN	129.88	-4.71
BOLSA MEXICANA	Mexico	MXN	40.98	-3.37
FERREYCORP SAA	Peru	PEN	2.2	-2.65
AERO DEL PACIF-B	Mexico	MXN	215.42	-2.41
INDUSTRIAS PENOL	Mexico	MXN	270.66	-2.34

Per Volume	Exchange	Volume
BANCO SANTANDER	Chile	292,336,207
ITAU CORPBANCA	Chile	288,378,689
ENEL CHILE SA	Chile	105,938,884
BANCO DE CHILE	Chile	95,786,178
ENEL AMERICAS SA	Chile	63,373,900

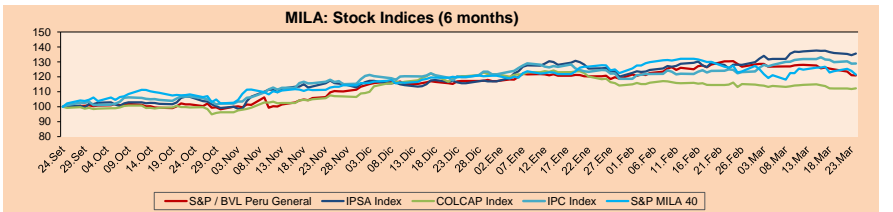
### MILA

Peru: The General Index of BVL ended today's session with a negative result of -0.15%. The index maintains a positive annual cumulative trend of +3.24% in local currency, while the dollar-adjusted performance amounted to +0.31%. Then, the S&P / BVL Peru SEL varied by -0.59% while the S&P / BVL LIMA 25 by -0.40%. The spot PEN reached S / 3.7226. Headline: Moody's upgrades outlook for banks in Peru and keeps Chile and Mexico on negative

Chile: The IPSA index ended the day with a positive return of +0.82%. The most benefited sectors of the day were Consumer Staples (+2.43%) and Real Estate (+2.09%). The best performing stocks were Plaza SA (+3.88%) and Inversiones La Construcción SA (+2.81%). Headline: Merkel backs away from strict Easter Week confinement and accepts her "mistake"

Colombia: The COLCAP index closed today with a positive return of +0.04%. The sectors that benefited the most during the day were Communication services (+3.22%) and Non basic consumer products (+2.44%). The best performing stocks were Empresa de Telecomunicaciones (+3.22%) and Organización Terpel SA (+2.44%). Headline: Colombia's tax reform could negatively affect corporate credit, warns Fitch

Mexico: The IPC index closed the day with a positive performance of +0.09%. The sectors that benefited the most during the day were Real Estate (+2.78%) and Utilities (+1.46%). The best performing stocks were Corp. Inmobiliaria Vesta SAB de CV (+2.78%) and Wal-Mart de Mexico SAB de CV (+2.47%). Headline: Inflation accelerates strongly in the first half of March and exceeds the central bank's range

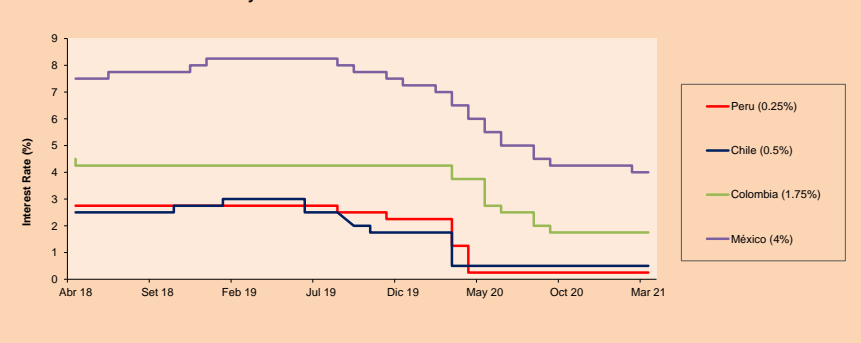


Base: 25/09/20=100  
Source: Bloomberg

### ETFs

ETFs	Curr.	Close	1D	5D	30 D	YTD	Exchange
▼ iShares MSCI All Peru Caped Index Fund	USD	33.9	-0.96%	-6.66%	-12.45%	-2.25%	NYSE Arca
▲ iShares MSCI All Chile Caped Index Fund	USD	33.37	0.12%	-3.78%	2.74%	10.46%	Cboe BZX
▲ Global X MSCI Colombia	USD	10.25	0.36%	-2.84%	-1.16%	-9.77%	NYSE Arca
▼ iShares MSCI Mexico Capped	USD	42.62	-0.63%	-4.53%	3.98%	-0.86%	NYSE Arca
▼ iShares MSCI Emerging Markets	USD	51.68	-2.29%	-5.03%	-7.45%	0.02%	NYSE Arca
▼ Vanguard FTSE Emerging Markets	USD	50.56	-2.34%	-4.80%	-7.18%	0.90%	NYSE Arca
▼ iShares Core MSCI Emerging Markets	USD	62.41	-2.24%	-4.83%	-6.96%	0.60%	NYSE Arca
▼ iShares JP Morgan Emerging Markets Bonds	USD	61.81	-0.53%	-2.63%	-2.98%	1.20%	Cboe BZX
▲ Morgan Stanley Emerging Markets Domestic	USD	5.99	0.17%	-0.17%	-2.44%	-4.77%	New York

### MILA: Policy Rate



Source: Bloomberg

Capital Market Laboratory Coordinator: Economist Bruno Bellido  
Collaboration: Piero Best, Maria Camarena, Alonso Stephen Hernández and Adrian Paredes  
email: pulsobursatil@ulima.edu.pe  
facebook: www.facebook.com/pulsobursatil.u

The content of this document is just for informational purposes. The information and opinions expressed should not be considered as recommendations for future decisions. Under any circumstances, the Capital Market Laboratory of University of Lima will be responsible for the use of the statements in this document.

## WORLD

Main Indices	Close	1 D*	5 D*	1 M*	YTD*	Market Cap. (US\$ Mill.)
▼ Dow Jones (USA)	32,420.06	-0.01%	-1.80%	3.24%	5.93%	9,705,999
▼ Standard & Poor's 500 (EEUU)	3,889.14	-0.55%	-2.14%	1.56%	3.54%	34,386,314
▼ NASDAQ Composite (USA)	12,961.89	-2.01%	-4.17%	-1.20%	0.57%	21,163,445
▲ Stoxx EUROPE 600 (Europe)	423.39	0.02%	-0.36%	2.83%	6.10%	9,833,907
▲ DAX (Germany)	14,810.39	-0.35%	0.09%	5.27%	6.50%	1,125,747
▲ FTSE 100 (United Kingdom)	6,712.89	0.20%	-0.74%	0.92%	3.91%	1,416,251
▲ CAC 40 (France)	5,947.29	0.03%	-1.78%	2.83%	7.13%	1,640,428
▲ IBEX 35 (Spain)	8,443.70	0.64%	-1.81%	1.51%	4.58%	471,493
▼ MSCI AC Asia Pacific Index	202.21	-1.98%	-2.93%	-5.69%	1.15%	25,485,194
▼ HANG SENG (Hong Kong)	27,918.14	-2.03%	-3.84%	-7.19%	2.50%	4,315,086
▼ SHANGHAI SE Comp. (China)	3,387.06	-1.30%	-2.28%	-6.09%	-3.06%	6,354,336
▼ NIKKEI 225 (Japan)	28,405.52	-2.04%	-5.04%	-5.11%	4.31%	3,958,642
▼ S&P / ASX 200 (Australia)	6,778.77	0.50%	-0.24%	-0.78%	2.94%	1,641,403
▼ KOSPI (South Korea)	2,996.35	0.09%	-2.05%	-4.37%	1,767,739	

\*Legend: Variation 1D: 1 Day; 5D: 5 Days; 1M: 1 Month; YTD: Var.% 12/31/20 to date

## Equity

Germany (Stocks from DAX Index)

Largest gains	Curr.	Price	▲%	Exchange	Largest losses	Curr.	Price	▼%	Exchange
BAS GY	EUR	69.98	1.41	Xetra	DHER GY	EUR	109.25	-2.89	Xetra
MTX GY	EUR	196.3	1.29	Xetra	DWNI GY	EUR	40.41	-2.30	Xetra
DBK GY	EUR	10.614	1.11	Xetra	ENR GY	EUR	29.38	-2.16	Xetra
MUV2 GY	EUR	261.2	0.89	Xetra	CON GY	EUR	110.9	-1.90	Xetra

Europe (Stocks from STOXX EUROPE 600)

Largest gains	Curr.	Price	▲%	Exchange	Largest losses	Curr.	Price	▼%	Exchange
ASM NA	EUR	228	5.17	EN Amsterdam	SCATC NO	NOK	241.2	-7.94	Oslo
RYA ID	EUR	16.26	4.84	EN Dublin	DUFN SE	CHF	59.54	-6.97	SIX Swiss Ex
ASML NA	EUR	492.2	4.17	EN Amsterdam	LDO IM	EUR	6.874	-6.09	Borsa Italiana
MT NA	EUR	22.66	4.11	EN Amsterdam	SAE GY	EUR	176.8	-5.76	Xetra

## Global Overview:

### United States:

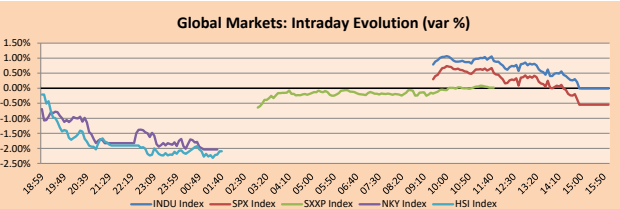
The main U.S. indexes ended today's session with losses after investors were skeptical about the economic recovery data shown by Jerome Powell the previous session. Regarding Treasury yields, they reached 1.64%, falling three basis points. On the other hand, mortgage applications increased 3% last week from the previous week despite the increase in rates by more than 50 basis points so far this year. Thus, the S&P 500 closed the day lower dragged down by the larger cap techs; Tesla -4.82%, Facebook -2.92% and Netflix -2.67% amid rotations into cyclically sensitive stocks. On the other hand, the energy sector +2.69% benefited from higher crude oil prices. In individual stocks, Elon Musk announced the possibility of buying Tesla vehicles in the U.S. With bitcoin. On the other hand, GameStop fell -33.79% following a poor quarterly earnings report relative to expectations. Thus, S&P 600 -0.55%; Dow Jones -0.01% and Nasdaq -2.01%.

### Europe:

European markets ended trading slightly higher, as optimism over strong business data was mitigated by new containment measures. In economic data, the Eurozone Flash Composite Purchasing Managers Index (PMI) registered a value of 52.5 in March, beating expectations. This is interpreted as an economic expansion, showing an improvement compared to its value of 48.8 in February. These results reassured the market agents. However, there is the possibility that a third wave of COVID-19, new restrictions in Europe and a slower speed in the deployment of vaccines will affect the indicator in April, according to Reuters. Michele Morganti from General Insurance Asset Management stated that "Managing COVID is a bumpy road. However, we believe that the recovery will be quite strong in the second half of the year". The quick estimate of consumer morale also showed an improvement, going from -14.8 in February to -10.8 in March. On the other hand, the European Union could extend the blockages on the export of the vaccine to Great Britain and other areas with higher vaccination rates. In this way, the STOXX 600 +0.02%, CAC 40 +0.03%, FTSE 100 +0.2% and AEX +0.64% closed higher, among other indices.

### Asia:

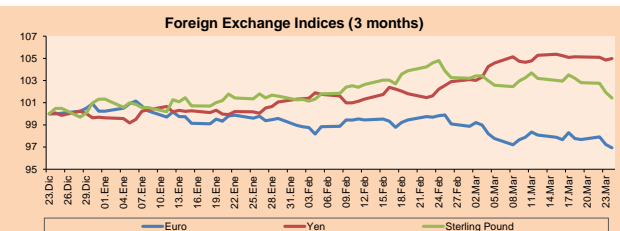
Asian markets ended today's session negatively on concerns of possible rate hikes and policy tightening globally, while high Treasury yields also reduced risk appetite. In China, the CSI 300 index fell -1.6% to its lowest close in three months as the risk was more adverse on concerns about tightening policies and escalating tensions between China and major Western economies. In the case of Japan, stocks fell for the fourth consecutive session, as the return of the coronavirus locks in Europe is expected and the fall in oil prices affected hopes of an acceleration in the world economy. Meanwhile, in South Korea, Samsung Electronics fell by -1.34% after rival Intel Corp announced plans to vastly expand its advanced chip manufacturing capacity. Likewise, Hyundai Motor fell -2.43% after a report in which production interruptions are expected from April due to a general shortage of chips. Thus, the Shanghai Composite -1.30%, Shenzhen -1.47%, Hang Seng -2.03%, Nikkei -2.04%, S & P / ASX 200 +0.50% and Kospi Composite -0.28% fell, among other indices.



Source: Bloomberg

Currency	Price	1 D*	5 D*	1 M*	YTD*
▼ Euro	1.1813	-0.30%	-1.39%	-2.83%	-3.30%
▲ Yen	108.7300	0.13%	-0.10%	3.47%	5.31%
▼ Sterling Pound	1.3686	-0.48%	-2.00%	-2.68%	0.12%
▲ Yuan	6.5245	0.13%	0.31%	0.92%	-0.04%
▲ Hong Kong Dollar	7.7680	0.01%	0.03%	0.19%	0.19%
▲ Brazilian Real	5.6222	1.78%	0.63%	2.97%	8.15%
- Argentine Peso	91.6362	0.00%	0.47%	2.46%	8.90%

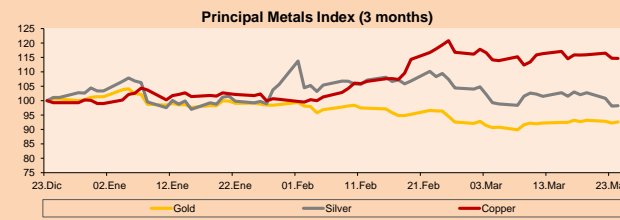
\*Legend: Variación 1D: 1 Día; 5D: 5 Days; 1M: 1 Month; YTD: Var.% 12/31/20 to date



Base: 23/12/20=100  
Source: Bloomberg

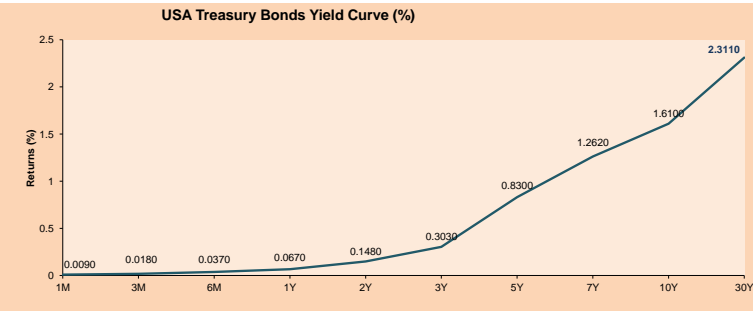
Commodities	Close	1 D*	5 D*	1 M*	YTD*
▲ Oro (US\$ Oz. T) (LME)	1,734.69	0.44%	-0.61%	-4.14%	-6.62%
▲ Plata (US\$ Oz. T) (LME)	25.09	0.14%	-4.64%	-10.81%	-4.93%
▼ Cobre (US\$ TM) (LME)	8,973.25	-0.06%	-1.07%	-1.74%	15.80%
▼ Zinc (US\$ TM) (LME)	2,786.05	-1.39%	-0.88%	-3.38%	2.08%
▲ Petróleo WTI (US\$ Barril) (NYM)	61.18	5.92%	-5.34%	-0.36%	25.65%
▼ Estante (US\$ TM) (LME)	26,890.00	-2.77%	-3.83%	-7.45%	30.89%
▼ Plomo (US\$ TM) (LME)	1,911.75	-0.48%	-1.10%	-10.49%	-3.24%
▲ Azúcar #11 (US\$ Libra) (NYB-ICE)	15.63	1.30%	-2.25%	-10.38%	6.47%
▼ Cacao (US\$ TM) (NYB-ICE)	2,435.00	-0.49%	-3.41%	-2.21%	-3.94%
▼ Café Arábica (US\$ TM) (NYB-ICE)	126.50	-0.86%	-5.28%	-6.26%	-2.80%

\*Leyenda: Variación 1D: 1 Día; 5D: 5 Días; 1M: 1 Mes; YTD: Var.% 31/12/20 a la fecha



Base: 23/12/20=100  
Source: Bloomberg

ETFs	Curr.	Close	1D	5D	30 D	YTD	Exchange
SPDR S&P 500 ETF TRUST	USD	387.52	-0.51%	-2.46%	0.13%	3.65%	NYSE Arca
ISHARES MSCI EMERGING MARKET	USD	51.68	-2.29%	-5.03%	-7.45%	0.02%	NYSE Arca
ISHARES IBOXX HIGH YLD CORP	USD	86.51	0.06%	0.14%	-0.83%	-0.90%	NYSE Arca
FINANCIAL SELECT SECTOR SPDR	USD	33.28	0.36%	-3.37%	1.74%	12.89%	NYSE Arca
VANECK GOLD MINERS	USD	32.30	-1.04%	-5.58%	-5.58%	-10.33%	NYSE Arca
ISHARES RUSSELL 2000 ETF	USD	212.04	-2.31%	-8.73%	-5.23%	8.15%	NYSE Arca
SPDR GOLD SHARES	USD	162.37	0.35%	-0.70%	-4.21%	-8.97%	NYSE Arca
ISHARES 20+ YEAR TREASURY BO	USD	138.23	0.54%	2.17%	-2.78%	-12.36%	NASDAQ GM
INVESCO QQQ TRUST SERIES 1	USD	311.87	-1.69%	-3.12%	-3.28%	-0.60%	NASDAQ GM
ISHARES NASDAQ BIOTECHNOLOGY	USD	147.31	-2.84%	-6.88%	-9.15%	-2.76%	NASDAQ GM
ENERGY SELECT SECTOR SPDR	USD	48.03	2.51%	-5.44%	2.62%	29.37%	NYSE Arca
PROSHARES ULTRA VIX ST FLUTR	USD	6.58	0.92%	0.30%	-29.91%	-38.40%	Cboe BZX
UNITED STATES OIL FUND LP	USD	41.45	5.28%	-5.41%	0.41%	25.57%	NYSE Arca
ISHARES MSCI BRAZIL ETF	USD	32.13	-3.25%	-5.08%	-4.00%	-13.33%	NYSE Arca
SPDR S&P OIL & GAS EXP & PR	USD	79.46	1.49%	-9.19%	-0.59%	35.83%	NYSE Arca
UTILITIES SELECT SECTOR SPDR	USD	62.59	0.03%	0.53%	3.95%	-0.18%	NYSE Arca
ISHARES US REAL ESTATE ETF	USD	90.43	-0.46%	-1.66%	1.33%	5.58%	NYSE Arca
SPDR S&P BIOTECH ETF	USD	131.42	-5.14%	-10.92%	-14.82%	-6.65%	NYSE Arca
ISHARES IBOXX INVESTMENT GRA	USD	129.86	0.30%	0.53%	-1.87%	-5.99%	NYSE Arca
ISHARES JIP MORGAN US EMERGI	USD	109.38	0.22%	-0.99%	-1.66%	-5.63%	NASDAQ GM
REAL ESTATE SELECT SECT SPDR	USD	38.63	-0.44%	-1.98%	0.84%	5.66%	NYSE Arca
ISHARES CHINA LARGE-CAP ETF	USD	45.11	-3.69%	-6.82%	-12.65%	-2.84%	NYSE Arca
CONSUMER STAPLES SPDR	USD	66.74	-0.39%	0.28%	2.68%	-1.05%	NYSE Arca
VANECK JR GOLD MINERS	USD	45.19	-1.31%	-7.28%	-10.18%	-16.69%	NYSE Arca
SPDR BBG BARC HIGH YIELD BND	USD	108.03	0.18%	0.18%	-0.84%	-0.84%	NYSE Arca
VANGUARD REAL ESTATE ETF	USD	90.49	-0.56%	-2.36%	0.93%	6.55%	NYSE Arca
GRAYSCALE BITCOIN TRUST BTC	USD	45.00	-3.74%	-13.44%	-15.89%	40.63%	OTC US



Source: Bloomberg

LIMA

Stocks

Ticker	Currency	Price	1D*	5D*	30D*	YTD*	Frequency	Volume (US\$)	Beta	Dividend Yield (%)	Price Earning	Market Cap. (M US\$)	Economic Sector*	Index Weight
▼ ALICORC1 PE**	S/.	7.90	-0.24%	-0.63%	-1.61%	-1.20%	100.00%	428,761	0.68	3.16	20.63	1,809.51	Industrial	3.53%
▲ ATACOCB1 PE**	S/.	0.15	-1.94%	-1.94%	-8.43%	10.14%	80.00%	9,971	1.09	0.00	-	38.57	Mining	1.02%
▲ BACKUSI1 PE**	S/.	22.60	0.04%	-2.80%	-1.74%	12.16%	100.00%	2,713	0.55	1.55	10.84	8,435.22	Industrial	0.82%
▼ BAP PE**	US\$	139.50	-0.64%	-6.98%	-14.42%	-13.14%	100.00%	535,699	1.65	6.31	-	13,166.33	Diverse	5.82%
- BVN PE**	US\$	10.50	0.00%	-5.66%	-8.54%	-12.50%	100.00%	171,050	1.16	0.00	-	2,894.16	Mining	5.88%
- CASAGRC1 PE**	S/.	5.50	-6.78%	-5.17%	-12.70%	15.79%	75.00%	24,465	0.60	4.11	9.87	124.42	Agricultural	1.31%
- BBVAC1 PE**	S/.	2.42	0.00%	-0.41%	-1.63%	11.52%	100.00%	171,318	0.66	3.57	25.33	4,243.36	Finance	2.85%
- CORAREI1 PE**	S/.	1.12	-0.88%	-2.61%	-2.61%	25.84%	100.00%	104,783	0.57	6.23	6.68	414.56	Industrial	1.72%
- CPACASC1 PE**	S/.	5.90	0.00%	-0.34%	-4.07%	11.32%	100.00%	313,372	0.59	3.90	42.14	723.54	Industrial	2.38%
- CVERDEC1 PE**	US\$	25.71	-0.73%	-1.76%	-4.78%	22.90%	100.00%	622,816	0.89	0.00	32.78	8,999.94	Mining	5.25%
- ENGEPEC1 PE**	S/.	2.64	0.76%	-0.38%	5.60%	32.00%	90.00%	46,598	0.50	8.33	16.14	2,012.65	Public Services	1.44%
- ENDISPC1**	S/.	6.05	0.00%	-0.33%	0.83%	12.04%	60.00%	5,059	0.49	0.00	14.19	1,037.52	Public Services	0.98%
▼ FERREYC1 PE**	S/.	2.20	-2.65%	-0.45%	6.28%	26.44%	100.00%	383,331	0.57	3.48	14.63	576.46	Diverse	4.90%
- AENZAC1 PE**	S/.	1.61	-4.17%	-5.85%	-6.40%	-7.47%	95.00%	77,932	0.83	0.00	-	377.00	Diverse	4.05%
- IFS PE**	US\$	28.50	0.00%	-7.65%	-17.39%	-7.89%	100.00%	153,950	1.29	6.14	31.97	3,290.26	Diverse	7.22%
▼ INRETC1 PE**	US\$	42.70	-1.16%	-4.04%	-0.70%	8.93%	100.00%	279,602	0.65	1.32	54.01	4,389.87	Diverse	5.28%
▼ LUSURC1 PE**	S/.	12.24	-2.08%	-9.27%	-47.20%	-52.00%	85.00%	2,145,071	0.58	5.70	12.01	1,600.68	Public Services	1.81%
- MINSUR1 PE**	S/.	2.77	-0.72%	-2.81%	-12.34%	49.73%	95.00%	118,623	0.79	0.00	73.46	2,144.67	Mining	3.09%
- PML PE**	US\$	0.16	0.00%	0.00%	3.33%	46.23%	65.00%	6,898	1.47	0.00	-	40.95	Mining	2.12%
▲ RELAPAC1 PE**	S/.	0.13	2.29%	-1.47%	5.51%	94.20%	95.00%	53,667	0.42	0.00	-	299.38	Industrial	2.12%
▲ SCCO PE**	US\$	69.30	1.91%	-6.84%	-15.90%	5.16%	90.00%	57,531	0.92	2.45	32.21	53,573.98	Mining	2.14%
- SIDERC1 PE**	S/.	1.00	0.00%	-2.91%	-0.99%	17.65%	85.00%	12,478	0.83	27.69	11.88	329.77	Industrial	1.43%
- TV PE**	US\$	0.15	0.00%	-6.96%	-18.33%	0.00%	95.00%	39,639	1.48	0.00	-	145.40	Mining	2.93%
▼ UNACEMC1 PE**	S/.	1.75	-2.78%	-2.78%	-6.42%	12.90%	95.00%	408,417	0.80	0.74	38.34	854.48	Industrial	3.00%
▲ VOLCABC1 PE**	S/.	0.84	5.00%	0.00%	9.09%	61.54%	100.00%	1,076,148	0.86	0.00	-	919.63	Mining	5.90%
▼ NEXAPEC1 PE**	S/.	3.50	-2.78%	-7.89%	-11.39%	23.67%	90.00%	17,501	1.09	0.00	-	1,242.70	Mining	1.56%

Quantity of shares: 26

Source: Bloomberg, Económática

\* Bloomberg Industry Classification System

\*\* PER is used in the stock market and original currency of the instrument

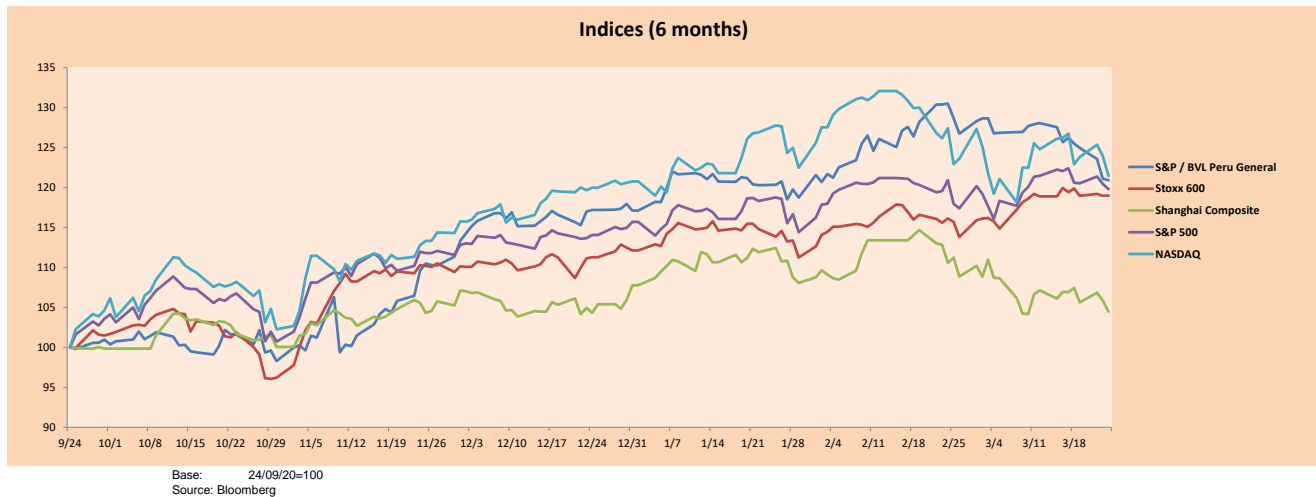
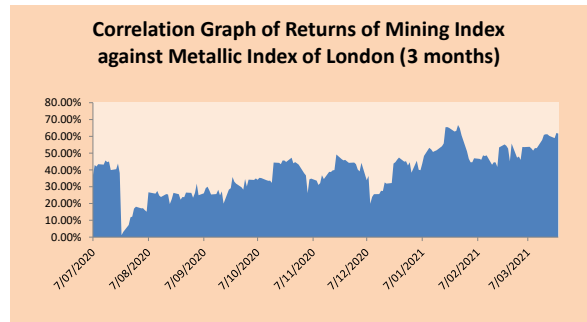
\*Legend: Variation 1D: 1 Day; 5D: 5 Days; 1M: 1 Month; YTD: Var.% 12/31/20 to date

Sectorial Indices

	Close	1D*	5D*	30D*	YTD*	Beta
▲ S&P/BVLMining	421.18	1.32%	-5.34%	-10.82%	8.01%	0.92
▼ S&P/BVLConsumer	1,214.09	-0.61%	-2.83%	-1.10%	11.53%	0.41
▼ S&P/BVLIndustrials	217.07	-2.09%	-1.76%	-1.17%	13.91%	0.49
▼ S&P/BVLFinancials	937.79	-0.45%	-6.26%	-12.57%	-9.30%	1.76
▼ S&P/BVLConstruction	226.20	-1.91%	-2.34%	-4.36%	8.17%	0.54
▲ S&P/BVLPublicSvcs	655.10	0.25%	-0.19%	2.80%	6.68%	0.15
▲ S&P/BVLElectricUtil	639.54	0.25%	-0.19%	2.80%	6.68%	0.15

S&P/BVLConstructionTRPEN

\*Legend: Variation 1D: 1 Day; 5D: 5 Days; 1M: 1 Month; YTD: Var.% 12/31/20 to date



Capital Market Laboratory Coordinator: Economist Bruno Bellido  
Collaboration: Piero Best, Maria Camarena, Alonso Stephen Hernández and Adrian Paredes  
email: pulsohorsatil@ulima.edu.pe  
facebook: www.facebook.com/pulsohorsatil.ul

The content of this document is just for informational purposes. The information and opinions expressed should not be consider as recommendations for future decisions. Under any circumstances, the Capital Market Laboratory of University of Lima will be responsible for the use of the statements in this document.

## SOVEREIGN RATING

### RISK RATINGS

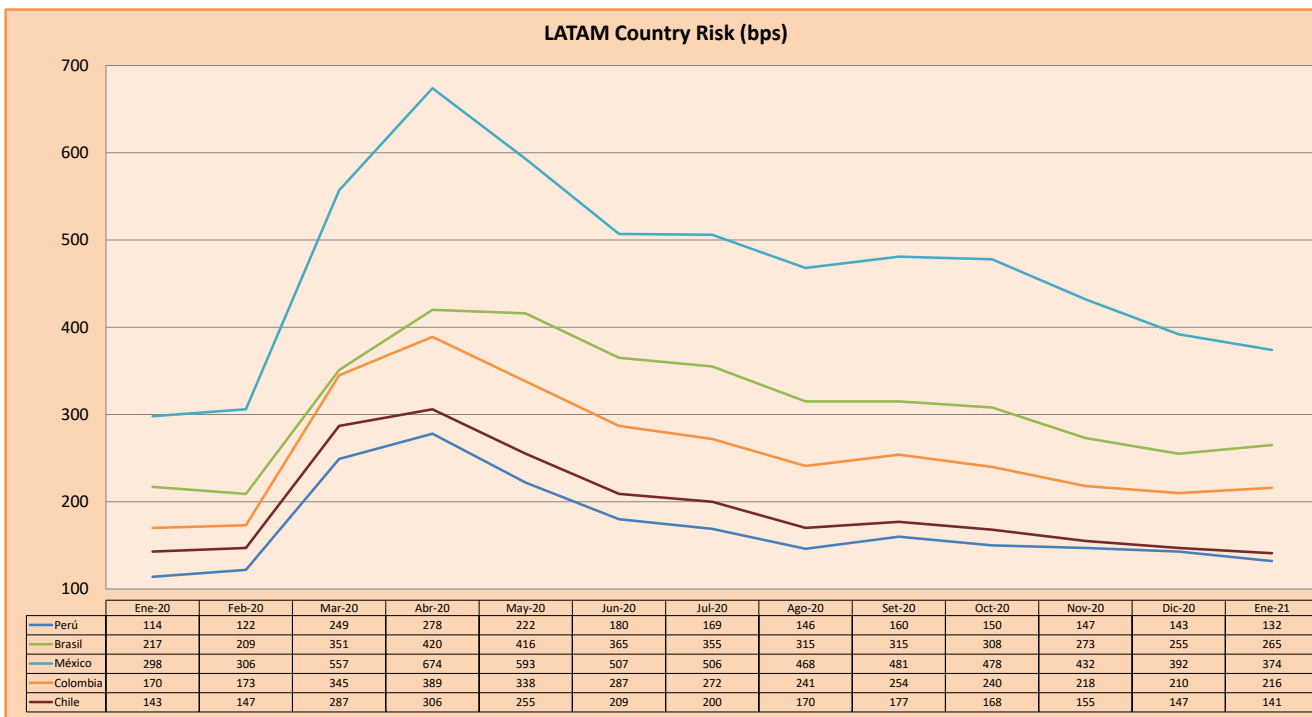
Moody's	S&P	Fitch	
Aaa	AAA	AAA	Prime
Aa1	AA+	AA+	High credit quality
Aa2	AA	AA	
Aa3	AA-	AA-	
A1	A+	A+	Medium-high grade, with low credit risk
A2	A	A	
A3	A-	A-	
Baa1	BBB+	BBB+	Moderate Credit Risk
Baa2	BBB	BBB	
Baa3	BBB-	BBB-	
Ba1	BB+	BB+	It has speculative elements and it is subject to substantial credit risk
Ba2	BB	BB	
Ba3	BB-	BB-	
B1	B+	B+	It is considered speculative and it has high credit risk
B2	B	B	
B3	B-	B-	
Caa1	CCC+		Bad credit conditions and it is subject to high credit risk
Caa2	CCC		
Caa3	CCC-	CCC	
Ca	C		Very close to default or in default
		DDD	
C	D	DD D	

Source: Bloomberg

Latin America Credit Rating			
Clasificadora de riesgo			
Country	Moody's	Fitch	S&P
Peru	A3	BBB+	BBB+
México	Ba2	BB-	BB-
Venezuela	C	WD	SD
Brazil	Ba2	BB-	BB-
Colombia	Baa2	BBB-	BBB-
Chile	A1	A-	A
Argentina	Ca	WD	CCC+
Panama	Baa2	BBB-	BBB

Source: Bloomberg

### LATAM Country Risk (bps)



Source: BCRP

Capital Market Laboratory Coordinator: Economist Bruno Bellido  
Collaboration: Piero Best, Maria Camarena, Alonso Stephen Hernández and Adrian Paredes  
email: pulsobursatil@ulima.edu.pe  
facebook: www.facebook.com/pulsobursatil.ul