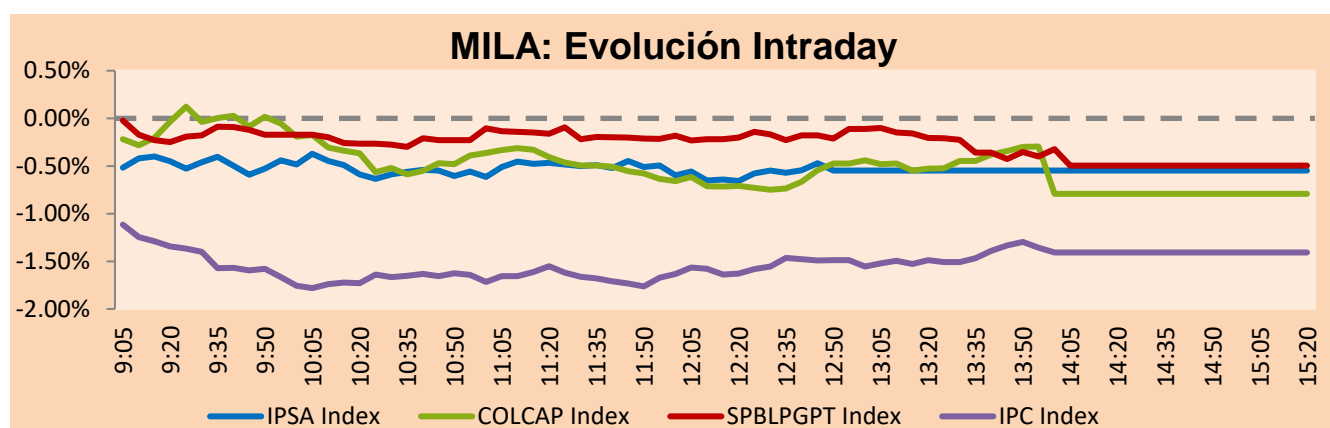


MILA

Lima, March 31, 2021

Main Indexes	Close	1 D	5 D	1 M	YTD	Cap. Burs. (US\$ bill)
▼ IPSA (Chile)	4,898.09	-0.61%	1.15%	5.62%	17.26%	135.02
▼ IGPA (Chile)	24,687.27	-0.46%	1.31%	5.49%	17.52%	162.18
▲ COLSC (Colombia)	1,048.16	0.22%	0.18%	-0.81%	-1.02%	5.31
▼ COLCAP (Colombia)	1,316.81	-0.79%	-0.64%	-2.87%	-8.42%	77.69
▼ S&P/BVL (Perú)*	21,372.03	-0.50%	-0.58%	-6.30%	2.64%	106.13
▼ S&P/BVL SEL (Perú)	570.66	-0.78%	0.36%	-5.53%	3.49%	93.29
▼ S&P/BVL LIMA 25	28,797.92	-0.28%	0.41%	-3.22%	14.28%	105.15
▼ IPC (México)	47,246.26	-1.38%	1.16%	5.50%	7.21%	293.89
▲ S&P MILA 40	545.84	0.50%	0.48%	-0.48%	2.10%	6,004.86

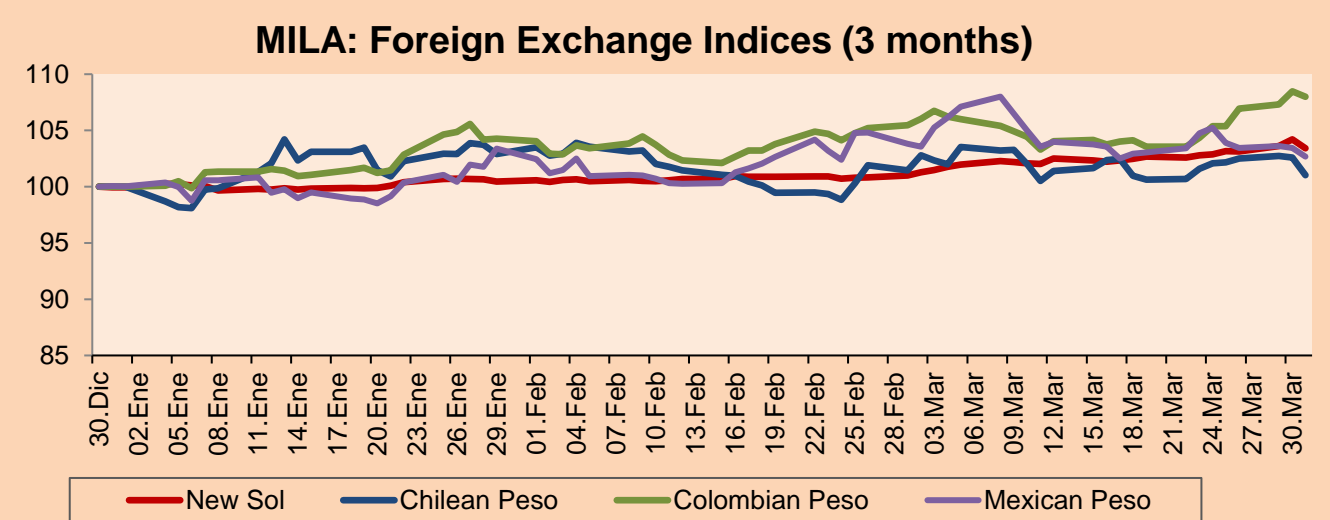
*Legend: Variation 1D: 1 day; 5D: 5 days; 1M: 1 Month; YTD: Var% 12/31/20 to date



Source: Bloomberg

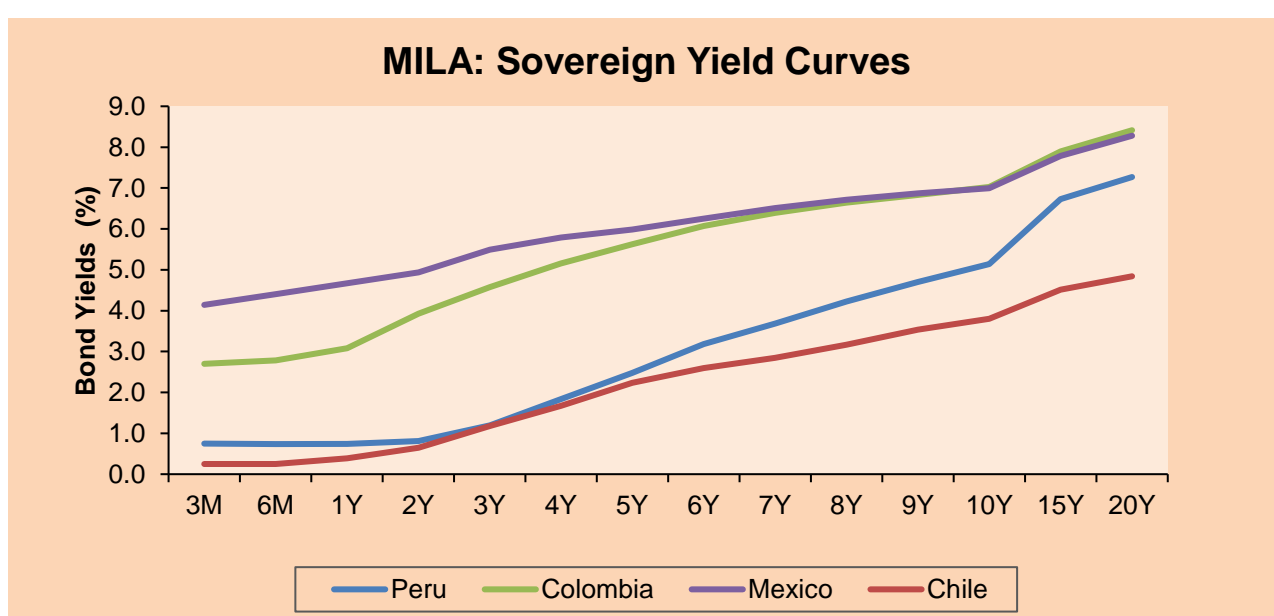
Currency	Price	1D*	5D*	30 D*	YTD*
▼ New Sol (PEN)	3,7435	-0.76%	0.53%	2.38%	3.47%
▼ Chilean Peso (CLP)	719.04	-1.53%	-1.03%	-0.43%	1.02%
▼ Colombian Peso (COP)	3,704.37	-0.43%	2.50%	2.42%	8.01%
▼ Mexican Peso (MXN)	20.43	-0.73%	-2.43%	-1.09%	2.60%

*Legend: Variation 1D: 1 day; 5D: 5 days; 1M: 1 Month; YTD: Var% 12/31/20 to date



Base: 30/12/20=100
Source: Bloomberg

Fixed Income	Currency	Price	Bid Yield (%)	Ask Yield (%)	Duration
PERU 7.35 07/21/25	USD	124.009	1.61	1.49	3.78
PERU 4.125 08/25/27	USD	112.019	2.15	2.06	5.74
PERU 8.75 11/21/33	USD	156.099	3.32	3.25	8.71
PERU 6.55 03/14/37	USD	135.905	3.60	3.55	10.55
PERU 5.625 11/18/2050	USD	133.206	3.78	3.74	16.34
CHILE 2.25 10/30/22	USD	102.679	0.65	0.42	1.54
CHILE 3.125 01/21/26	USD	107.837	1.47	1.38	4.50
CHILE 3.625 10/30/42	USD	105.03	3.32	3.28	15.30
COLOM 11.85 03/09/28	USD	157.41	2.83	2.59	5.33
COLOM 10.375 01/28/33	USD	153.2	4.62	4.41	7.85
COLOM 7.375 09/18/37	USD	132.423	4.60	4.51	10.61
COLOM 6.125 01/18/41	USD	119.145	4.67	4.61	12.26
MEX 4 10/02/23	USD	119.145	4.667	4.605	12.26
MEX5.55 01/45	USD	115.289	4.52	4.47	14.02



Source: Bloomberg

Equity

Largest gains	Exchange	Currency	Price	▲%	Largest losses	Exchange	Currency	Price	▼%
GRUPO MEXICO-B	Mexico	MXN	107.46	3.34	PROMOTORA Y OPEF	Mexico	MXN	156.36	-5.47
SMU SA	Chile	CLP	118.00	2.61	GRUPO TELEV-CPO	Mexico	MXN	36.38	-4.89
PARQUE ARAUCO	Chile	CLP	1405.00	1.44	ORBIA ADVANCE CO	Mexico	MXN	54.57	-4.30
AERO DEL SURES-B	Mexico	MXN	363.03	1.37	CEMEX SAB-CPO	Mexico	MXN	14.42	-3.22
BANCO CRED INVER	Chile	CLP	38101.00	1.33	ALFA SAB-A	Mexico	MXN	11.8	-3.20

Per Turnover	Exchange	Amount (US\$)
AMERICA MOVIL-L	Mexico	62,557,543
GRUPO MEXICO-B	Mexico	60,365,300
WALMART DE MEXIC	Mexico	55,636,413
FOMENTO ECON-UBD	Mexico	48,357,019
GRUPO F BANORT-O	Mexico	43,572,534

Per Volume	Exchange	Volume
BANCO SANTANDER	Chile	438,749,404
ITAU CORPBANCA	Chile	153,635,552
ENEL AMERICAS SA	Chile	118,673,653
AMERICA MOVIL-L	Mexico	91,348,628
BANCO DE CHILE	Chile	70,890,362

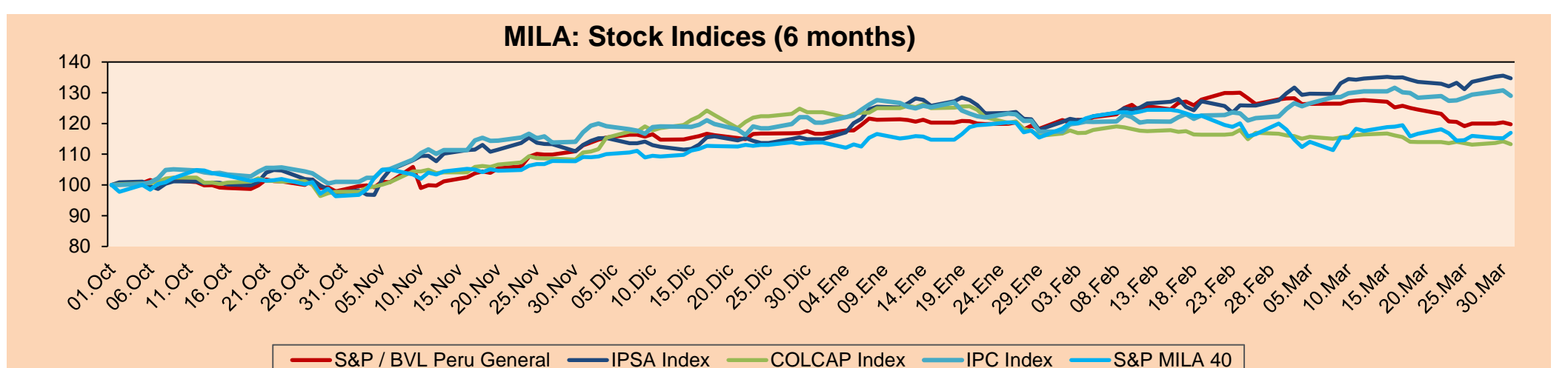
MILA

Peru: The BVL General Index ended today's session with a negative result of -0.02%. The index maintains an annual cumulative positive trend of +2.80% in local currency, while the dollar-adjusted performance amounted to -0.82%. Then, the S&P / BVL Peru SEL varied by -0.06% while the S&P / BVL LIMA 25 by +0.07%. The spot PEN reached S/3.7502. Headline: Peru remains at the top of the second wave of the pandemic, according to experts.

Chile: The IPSA index ended the day with a negative return of -0.61%. The sectors that lost the most during the day were Information Technology (-2.53%) and Energy (-1.68%). The worst performing stocks were Sonda SA (-2.53%) and Enel Chile SA (-2.47%). Headline: Dollar in Chile has its biggest drop since the beginning of the year

Colombia: The COLCAP index closed today with a negative return of -0.46%. The worst performing sectors of the day were Financials (-1.06%) and Consumer Staples (-0.21%). The worst performing stocks were BanColombia SA (-2.70%) and Banco Davivienda SA (-1.03%). Headline: Bogota prepares for Covid's third peak and accelerates vaccinations

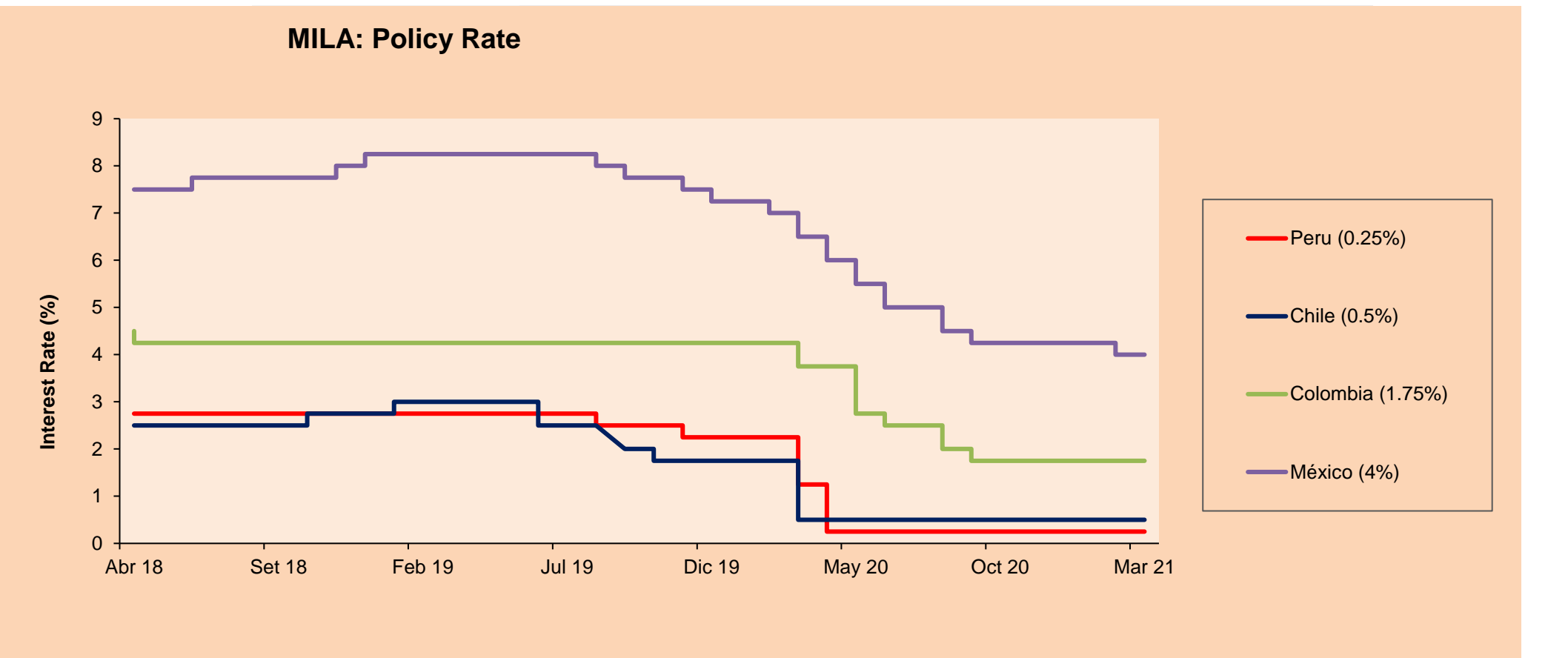
Mexico: The IPC index closed the day with a negative return of -1.38%. The sectors that lost the most during the day were Communication Services (-2.74%) and Consumer Staples (-1.93%). The worst performing stocks were Promotora y Operadora de Infra (-5.47%) and Grupo Televisa SA (-4.89%). Headline: New batches of "Sputnik V" vaccines arrive in Mexico



Base: 02/10/20=100
Source: Bloomberg

ETFs

ETFs	Curr.	Close	1D	5D	30 D	YTD	Exchange
▼ iShares MSCI All Peru Caped Index Fund	USD	33.995	-0.01%	0.28%	-8.69%	-1.98%	NYSE Arca
▲ iShares MSCI All Chile Caped Index Fund	USD	34.25	1.08%	2.64%	5.58%	13.37%	Cboe BZX
▲ Global X MSCI Colombia	USD	10.24	1.89%	-0.10%	0.09%	-9.86%	NYSE Arca
▼ iShares MSCI Mexico Capped	USD	43.83	-0.97%	2.84%	5.69%	1.95%	NYSE Arca
▲ iShares MSCI Emerging Markets	USD	53.34	0.51%	3.21%	-3.32%	3.23%	NYSE Arca
▲ Vanguard FTSE Emerging Markets	USD	52.05	0.44%	2.95%	-3.49%	3.87%	NYSE Arca
▲ iShares Core MSCI Emerging Markets	USD	64.36	0.45%	3.12%	-3.13%	3.74%	NYSE Arca
▲ iShares JP Morgan Emerging Markets Bonds	USD	63.16	0.51%	2.18%	-0.36%	3.41%	Cboe BZX
▲ Morgan Stanley Emerging Markets Domestic	USD	6.02	2.03%	0.50%	-0.17%	-4.29%	New York



Source: Bloomberg

WORLD

Main Indices	Close	1 D*	5 D*	1 M*	YTD*	Market Cap. (US\$ Mill.)
▼ Dow Jones (USA)	32,981.55	-0.26%	1.73%	4.59%	7.76%	9,851,066
▲ Standard & Poor's 500 (EEUU)	3,972.89	0.36%	2.15%	1.82%	5.77%	35,131,932
▲ NASDAQ Composite (USA)	13,246.87	1.54%	2.20%	-2.52%	2.78%	21,692,572
▼ Stoxx EUROPE 600 (Europe)	429.60	-0.24%	1.47%	4.16%	7.66%	10,062,914
- DAX (Germany)	15,008.34	0.00%	2.72%	7.10%	9.40%	1,166,115
▼ FTSE 100 (United Kingdom)	6,713.63	-0.86%	0.01%	1.90%	3.92%	1,406,950
▼ CAC 40 (France)	6,067.23	-0.34%	2.02%	4.74%	9.29%	1,686,251
▼ IBEX 35 (Spain)	8,580.00	-0.18%	1.61%	2.41%	6.27%	488,945
▼ MSCI AC Asia Pacific Index	203.57	-0.71%	0.67%	-3.21%	1.83%	25,777,728
▼ HANG SENG (Hong kong)	28,378.35	-0.70%	1.65%	-2.75%	5.19%	4,304,489
▼ SHANGHAI SE Comp. (China)	3,441.91	-0.43%	2.22%	-2.88%	-0.69%	6,474,705
▼ NIKKEI 225 (Japan)	29,178.80	-0.86%	2.72%	-0.55%	7.49%	3,955,572
▲ S&P / ASX 200 (Australia)	6,790.67	0.78%	0.18%	0.46%	3.55%	1,638,455
▼ KOSPI (South Korea)	3,061.42	-1.38%	1.16%	2.45%	7.43%	1,817,191

*Legend: Variation 1D: 1 Day; 5D: 5 Days; 1M: 1 Month; YTD: Var.% 12/31/20 to date

Equity

Germany (Stocks from DAX Index)

Largest gains	Curr.	Price	▲%	Exchange	Largest losses	Curr.	Price	▼%	Exchange
IFX GY	EUR	36.155	1.74	Xetra	BAS GY	EUR	70.84	-1.45	Xetra
EOAN GY	EUR	9.924	1.70	Xetra	HEI GY	EUR	77.46	-1.15	Xetra
DHER GY	EUR	110.5	0.96	Xetra	DBK GY	EUR	10.188	-1.09	Xetra
ENR GY	EUR	30.61	0.89	Xetra	ALV GY	EUR	217.05	-0.91	Xetra

Europe (Stocks from STOXX EUROPE 600)

Largest gains	Curr.	Price	▲%	Exchange	Largest losses	Curr.	Price	▼%	Exchange
AMBUB DC	DKK	297.9	6.05	Copenhagen	UPM FH	EUR	30.63	-6.70	Helsinki
SGRE SQ	EUR	33	5.50	Soc.Bol SIBE	STERV FH	EUR	15.905	-5.33	Helsinki
KINDSDB SS	SEK	153.7	5.45	Stockholm	SKAB SS	SEK	219	-4.99	Stockholm
KGH PW	PLN	190.2	5.08	Warsaw	CSGN SE	CHF	9.902	-4.93	SIX Swiss Ex

Global Overview:

United States:

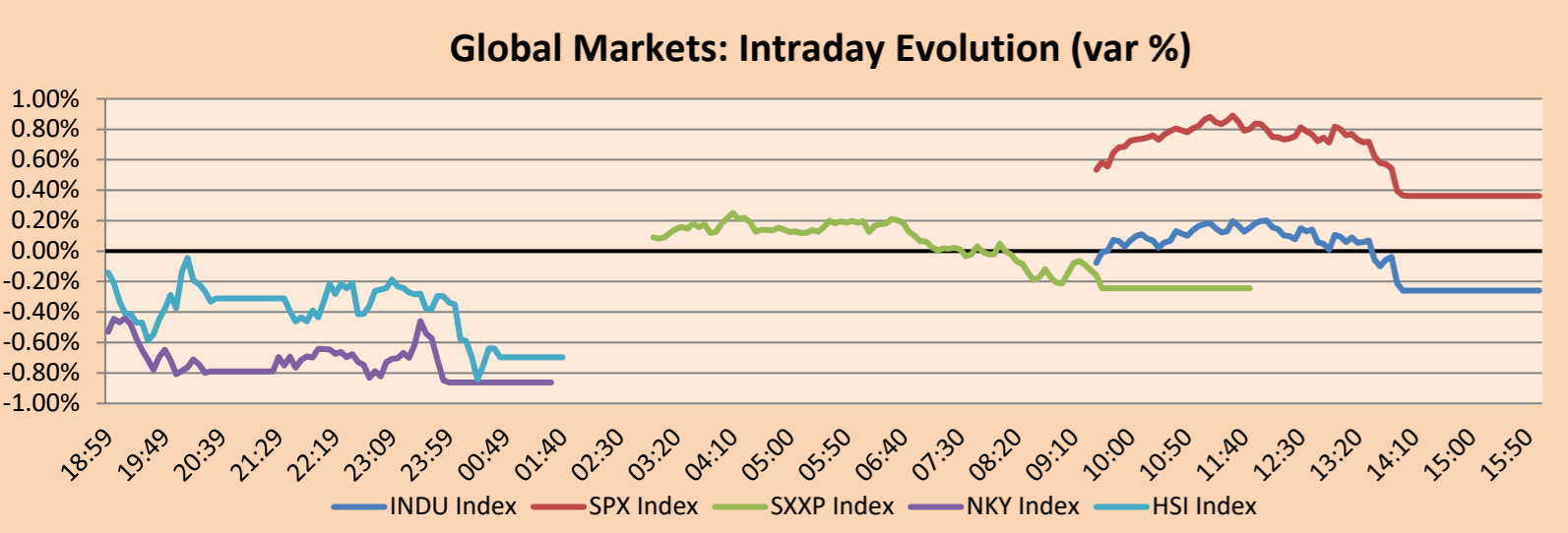
The major US indexes opened higher and closed mostly with positive returns mainly as a result of Biden's speech on his "Build Back Better" (BBB) stimulus plan. This result is since the shares of the technology sector, mainly those of Apple + 1.88%, Microsoft + 1.59% and Tesla Inc. + 5.08% had a positive impact in the last quarter of the day. In addition, some outstanding sectors within the SPX are the consumer sector + 0.83%, services + 0.65% and communications + 0.40%. On the other hand, some sectors such as energy + 0.93% and financial services + 0.90% had returns below expectations. On the other hand, because the BBB plan has been presented relatively close to a rescue package, it caused an increase in inflation expectations and bond yields. This brought distress for some investors which is reinforced with the increase in the tax rate; however, at the market level, President Biden has managed to create growth expectations. In addition, the latest event with the Bill Hwang (Archegos) fund has the consequence that investors still act a little more cautiously. SPX + 0.36%, DJIA -0.26% and NASDAQ + 1.54%

Europe:

European markets closed the day with negative results, due to extended falls in banking stocks, disappointments from initial public offerings and new containment measures. French President Emmanuel Macron announced Wednesday a series of measures to combat rising contagions. The pan-European STOXX 600 index closed at 430.4, approaching its pre-pandemic peak of 433.9. In London, the markets watched the debut of delivery company Deliveroo, recording a 30% drop in the value of its shares. This is because the company priced its IPO at £390 per share, a valuation of \$10.05 billion, below initial expectations. Its peers Just Eat Takeaway -0.20% and Delivery Hero -0.30% recorded losses. In the economic sector, Credit Suisse -2.54% continued to extend losses for the third consecutive day, due to concerns over its losses linked to the fall of Archegos Capital. In equities, Reuters News highlights H&M -2.83%, after the Swedish retailer reported a quarterly loss and the announcement of not proposing dividends at its annual meeting. CD Projekt -13.18%, after its strategy update disappointed investors. Thus, the STOXX 600 -0.24%, CAC 40 -0.34%, FTSE 100 -0.86% and DAX +0.00% closed with negative perform

Asia:

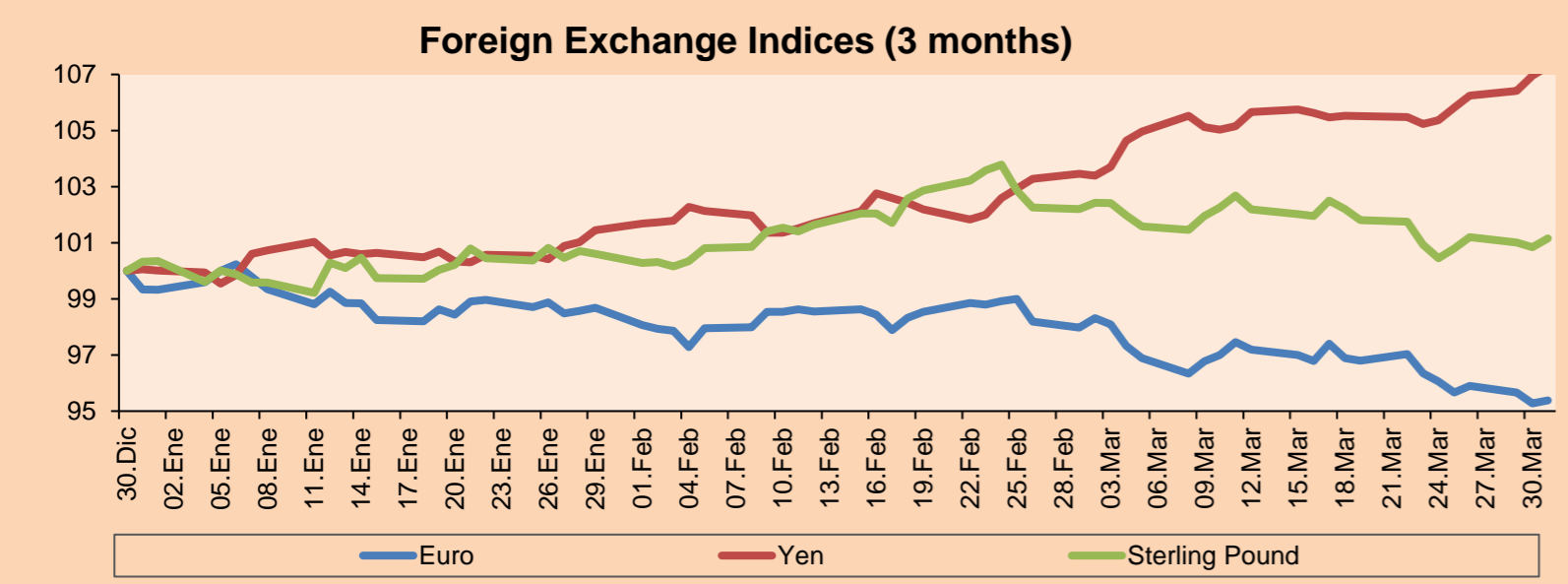
The main Asian indexes closed higher at the beginning of the second quarter with the publication of various economic data in the region. Shares in China and Hong Kong ended with gains despite several companies being suspended due to a delay in publishing their annual results and a PMI reading of 51.9 symbolizing an expansion of Chinese manufacturing activity. In Japan, stocks closed higher on positive news about the Bank of Japan, in which, after exceeding dire expectations in the quarterly survey of tankan business sentiment, had a positive impact on the index and, thanks to the high expectations in the technology sector specifically in companies related to semiconductors. On the other hand, thanks to the infrastructure plan proposed by Joe Biden, the South Korean index has increased due to the import boost that this plan offers. Finally, the Australian S & P / ASX 200 index, ended the day with slight gains due to a large increase in the information technology sector + 2.45%. Thus, KOSPI + 0.82%, S & P / ASX 200 + 0.56%, HANG SENG + 1.97%, Shanghai Composite + 0.52%, Nikkei + 1.58% ended the session with positive returns.



Source: Bloomberg

Currency	Price	1 D*	5 D*	1 M*	YTD*
▲ Euro	1.1730	0.11%	-0.70%	-2.65%	-3.98%
▲ Yen	110.7200	0.33%	1.83%	3.71%	7.23%
▲ Sterling Pound	1.3783	0.31%	0.71%	-1.02%	0.83%
▼ Yuan	6.5528	-0.29%	0.43%	1.34%	0.39%
▼ Hong Kong Dollar	7.7741	-0.01%	0.08%	0.23%	0.27%
▼ Brazilian Real	5.6337	-2.44%	0.20%	-0.01%	8.37%
▲ Argentine Peso	91.9874	0.03%	0.38%	2.11%	9.32%

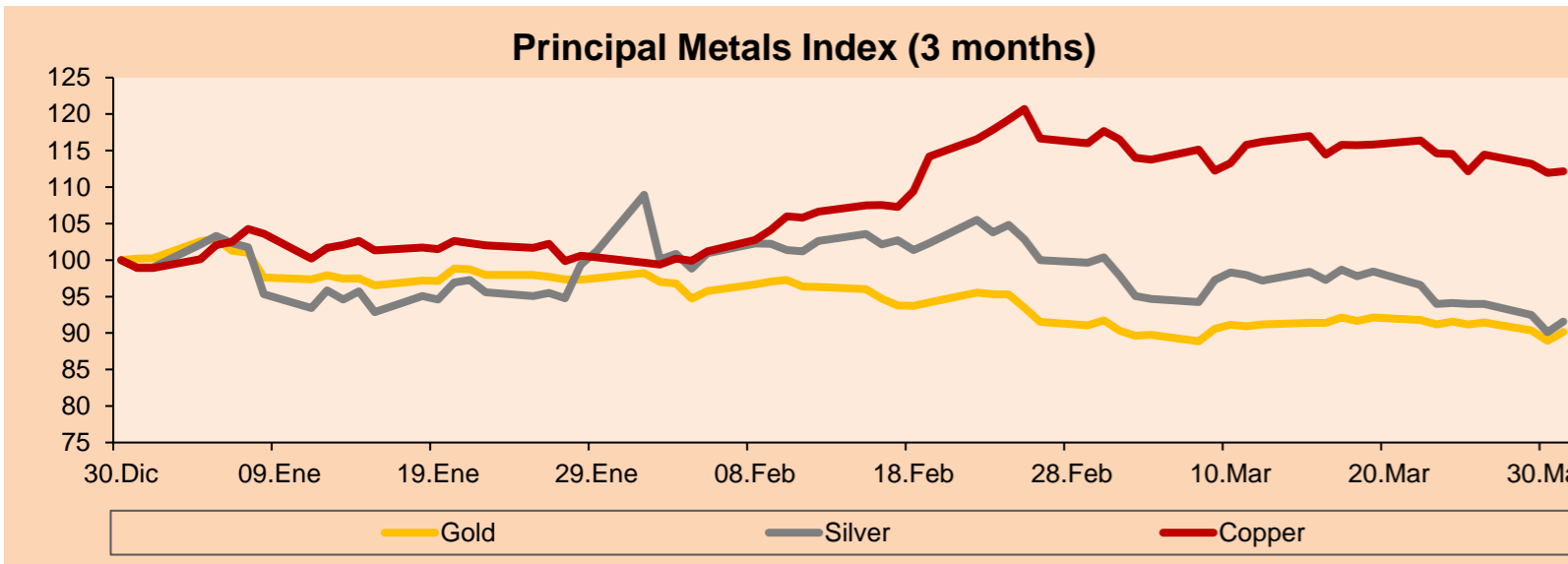
*Legend: Variation 1D: 1 Day; 5D: 5 Days; 1M: 1 Month; YTD: Var.% 12/31/20 to date



Base: 30/12/20=100
Source: Bloomberg

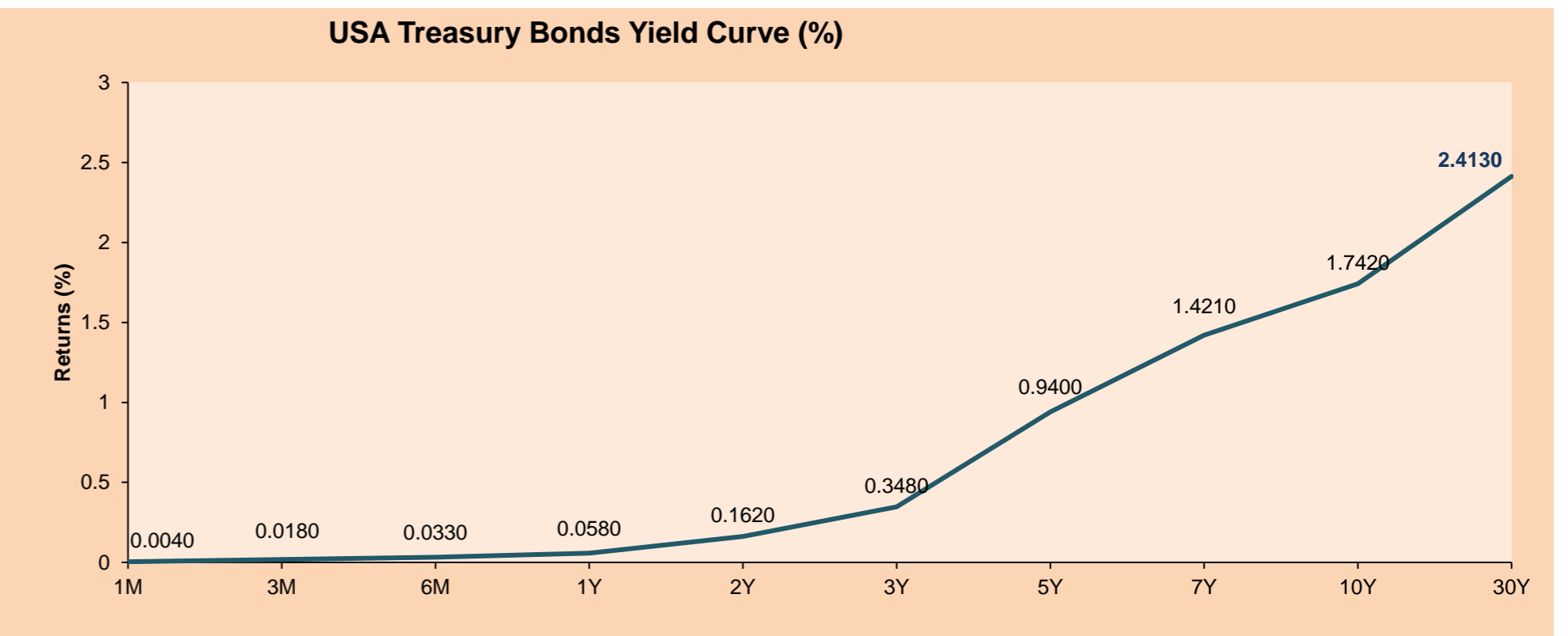
Commodities	Close	1 D*	5 D*	1 M*	YTD*
▲ Oro (US\$ Oz. T) (LME)	1,707.71	1.34%	-1.56%	-1.00%	-10.04%
▲ Plata (US\$ Oz. T) (LME)	24.42	1.61%	-2.70%	-8.11%	-7.52%
▲ Cobre (US\$ TM) (LME)	8,787.75	0.20%	-2.07%	-3.31%	13.40%
▲ Zinc (US\$ TM) (LME)	2,805.25	0.29%	0.69%	0.25%	2.78%
▼ Petróleo WTI (US\$ Barril) (NYM)	59.16	-2.30%	-3.30%	-2.09%	21.50%
▲ Estaño (US\$ TM) (LME)	27,538.00	2.72%	2.41%	16.00%	34.04%
▲ Plomo (US\$ TM) (LME)	1,952.50	0.30%	2.13%	-5.11%	-1.18%
▼ Azúcar #11 (US\$ Libra) (NYB-ICE)	14.77	-1.01%	-5.50%	-8.88%	0.61%
▲ Cacao (US\$ TM) (NYB-ICE)	2,385.00	0.04%	-2.77%	-9.35%	-5.02%
▲ Café Arábica (US\$ TM) (NYB-ICE)	123.50	0.73%	-2.37%	-9.06%	-5.11%

*Leyenda: Variación 1D: 1 Día; 5D: 5 Días; 1M: 1 Mes; YTD: Var.% 31/12/20 a la fecha



Base: 30/12/20=100
Source: Bloomberg

ETFs	Curr.	Close	1D	5D	30 D	YTD	Exchange
SPDR S&P 500 ETF TRUST	USD	396.33	0.41%	2.27%	1.73%	6.00%	NYSE Arca
ISHARES MSCI EMERGING MARKET	USD	53.34	0.51%	3.21%	-3.32%	3.23%	NYSE Arca
ISHARES IBOXX HIGH YLD CORP	USD	87.18	0.48%	0.77%	0.09%	-0.14%	NYSE Arca
FINANCIAL SELECT SECTOR SPDR	USD	34.05	-0.76%	2.31%	2.19%	15.50%	NYSE Arca
VANECK GOLD MINERS	USD	32.50	2.10%	0.62%	5.18%	-9.77%	NYSE Arca
ISHARES RUSSELL 2000 ETF	USD	220.94	1.34%	4.20%	-2.27%	12.69%	NYSE Arca
SPDR GOLD SHARES	USD	159.96	1.52%	-1.48%	-0.97%	-10.32%	NYSE Arca
ISHARES 20+ YEAR TREASURY BO	USD	135.45	-0.56%	-2.01%	-3.98%	-14.13%	NASDAQ GM
INVESTCO QQQ TRUST SERIES 1	USD	319.13	1.53%	2.33%	-1.38%	1.72%	NASDAQ GM
ISHARES NASDAQ BIOTECHNOLOGY	USD	150.56	2.65%	2.21%	-5.69%	-0.61%	NASDAQ GM
ENERGY SELECT SECTOR SPDR	USD	49.06	-0.69%	0.06%	-0.69%	29.45%	NYSE Arca
PROSHARES ULTRA VIX ST FUTUR	USD	5.65	-1.05%	-13.87%	-33.69%	-46.95%	Cboe BZX
UNITED STATES OIL FUND LP	USD	40.53	-1.55%	-2.22%	-0.17%	22.78%	NYSE Arca
ISHARES MSCI BRAZIL LP	USD	33.45	2.01%	4.11%	5.06%	-9.77%	NYSE Arca
SPDR S&P OIL & GAS EXP & PR	USD	81.34	0.73%	2.37%	-1.74%	39.04%	NYSE Arca
UTILITIES SELECT SECTOR SPDR	USD	64.04	0.74%	2.32%	7.36%	2.14%	NYSE Arca
ISHARES US REAL ESTATE ETF	USD	91.94	-0.41%	1.67%	4.99%	7.34%	NYSE Arca
SPDR S&P BIOTECH ETF	USD	135.65	4.26%	3.22%	-10.52%	-3.64%	NYSE Arca
ISHARES IBOXX INVESTMENT GRA	USD	130.05	0.26%	0.15%	-1.57%	-5.85%	NYSE Arca
ISHARES JP MORGAN USD EMERGI	USD	108.88	0.13%	-0.46%	-1.28%	-6.07%	NASDAQ GM
REAL ESTATE SELECT SECT SPDR	USD	39.49	-0.40%	2.23%	5.64%	8.01%	NYSE Arca
ISHARES CHINA LARGE-CAP ETF	USD	46.66	0.11%	3.44%	-7.37%	0.50%	NYSE Arca
CONSUMER STAPLES SPDR	USD	68.31	-0.32%	2.35%	6.83%	1.28%	NYSE Arca
VANECK JR GOLD MINERS	USD	45.01	3.35%	-0.40%	0.04%	-17.02%	NYSE Arca
SPDR BBG BARC HIGH YIELD BND	USD	108.80	0.39%	0.71%	-0.02%	-0.13%	NYSE Arca
VANGUARD REAL ESTATE ETF	USD	91.86	-0.61%	1.51%	4.08%	8.16%	NYSE Arca
GRAYSCALE BITCOIN TRUST BTC	USD	50.04	-1.53%	11.20%	9.21%	56.38%	OTC US



Source: Bloomberg

LIMA

Stocks

Ticker	Currency	Price	1D*	5D*	30D*	YTD*	Frequency	Volume (US\$)	Beta	Dividend Yield (%)	Price Earning	Market Cap. (M US\$)	Economic Sector*	Index Weight
▲ ALICORC1 PE**	S/.	7.65	0.22%	0.18%	-0.81%	-1.02%	100.00%	281,556	0.68	3.27	19.97	1,743.31	Industrial	3.53%
▲ ATACOB1 PE**	S/.	0.15	0.00%	-2.63%	-12.94%	7.25%	70.00%	893	1.09	0.00	-	37.35	Mining	1.02%
▲ BACKUS1 PE**	S/.	22.60	1.57%	0.00%	-5.83%	12.16%	95.00%	108,884	0.54	1.55	10.84	8,390.38	Industrial	0.82%
▼ BAP PE**	US\$	137.40	-0.74%	-1.51%	-13.86%	-14.45%	100.00%	660,865	1.65	6.41	-	12,968.13	Diverse	5.82%
▼ BVN PE**	US\$	10.00	-0.10%	-4.76%	-10.71%	-16.67%	100.00%	610,706	1.16	0.00	-	2,756.35	Mining	5.88%
▲ CASAGRC1 PE**	S/.	6.06	1.85%	10.18%	-0.66%	27.58%	85.00%	24,903	0.55	3.73	10.88	136.36	Agricultural	1.31%
▲ BBVAC1 PE**	S/.	2.42	-0.41%	0.00%	-2.02%	11.52%	100.00%	26,836	0.66	3.57	25.33	4,220.81	Finance	2.85%
▲ CORAREI1 PE**	S/.	1.17	1.74%	4.46%	5.41%	31.46%	100.00%	15,232	0.56	5.97	6.98	407.50	Industrial	1.72%
- CPACASC1 PE**	S/.	5.85	0.00%	-0.85%	-3.94%	10.38%	95.00%	258	0.59	0.00	41.79	714.03	Industrial	2.38%
▲ CVERDEC1 PE**	US\$	25.00	2.04%	-2.76%	-7.41%	19.50%	100.00%	149,865	0.89	0.00	31.88	8,751.40	Mining	5.25%
- ENGEPEC1 PE**	S/.	2.60	0.00%	-1.52%	3.17%	30.00%	85.00%	204,944	0.50	0.00	15.89	1,971.62	Public Services	1.44%
- ENDISPC1**	S/.	6.05	0.00%	0.00%	2.54%	12.04%	55.00%	3,232	0.48	0.00	14.19	1,032.01	Public Services	0.98%
▼ FERREYC1 PE**	S/.	2.22	-1.33%	0.91%	4.23%	27.59%	100.00%	191,628	0.57	3.45	14.77	578.61	Diverse	4.90%
- AENZAC1 PE**	S/.	1.80	0.00%	11.80%	5.26%	3.45%	95.00%	154,979	0.80	0.00	-	419.25	Diverse	4.05%
▲ IFS PE**	US\$	30.20	2.72%	5.96%	-11.82%	-2.39%	100.00%	27,620	1.27	5.79	34.06	3,486.52	Diverse	7.22%
▼ INRETC1 PE**	US\$	42.30	-0.70%	-0.94%	-6.00%	7.91%	100.00%	439,975	0.64	1.33	53.79	4,348.75	Diverse	5.28%
▲ LUSURC1 PE**	S/.	14.60	2.82%	19.28%	-33.64%	-42.75%	95.00%	43,547	0.54	4.78	14.70	1,899.16	Public Services	1.81%
- MINSURI1 PE**	S/.	2.75	0.00%	-0.72%	-8.94%	48.65%	90.00%	3,766	0.79	0.00	72.54	2,117.87	Mining	3.09%
▲ PML PE**	US\$	0.15	2.67%	-0.65%	-1.28%	45.28%	70.00%	40,757	1.45	0.00	-	40.69	Mining	2.12%
▲ RELAPAC1 PE**	S/.	0.13	1.57%	-3.73%	-1.53%	86.96%	95.00%	29,809	0.47	0.00	-	286.68	Industrial	2.12%
▲ SCCO PE**	US\$	68.52	0.54%	-1.13%	-8.54%	3.98%	90.00%	41,127	0.96	2.48	31.85	52,970.98	Mining	2.14%
▼ SIDERC1 PE**	S/.	1.09	-0.91%	9.00%	6.86%	28.24%	85.00%	17,470	0.80	25.40	12.95	357.53	Industrial	1.43%
▲ TV PE**	US\$	0.15	2.00%	4.08%	0.66%	4.08%	95.00%	42,099	1.47	0.00	-	151.33	Mining	2.93%
▲ UNACEMC1 PE**	S/.	1.72	1.18%	-1.71%	-6.52%	10.97%	95.00%	54,000	0.81	0.76	37.68	835.36	Industrial	3.00%
▼ VOLCABC1 PE**	S/.	0.84	-1.18%	0.00%	5.00%	61.54%	100.00%	151,210	0.86	0.00	-	914.74	Mining	5.90%
▲ NEXAPEC1 PE**	S/.	3.43	0.88%	-2.00%	-14.25%	21.20%	80.00%	9,424	1.12	0.00	-	1,211.60	Mining	1.56%

Quantity of shares: 26
Source: Bloomberg, Economática
* Bloomberg Industry Classification System
** PER is used in the stock market and original currency of the instrument
*Legend: Variation 1D: 1 Day; 5D: 5 Days, 1M: 1 Month; YTD: Var.% 12/31/20 to date

Up 13
Down 7
Hold 6

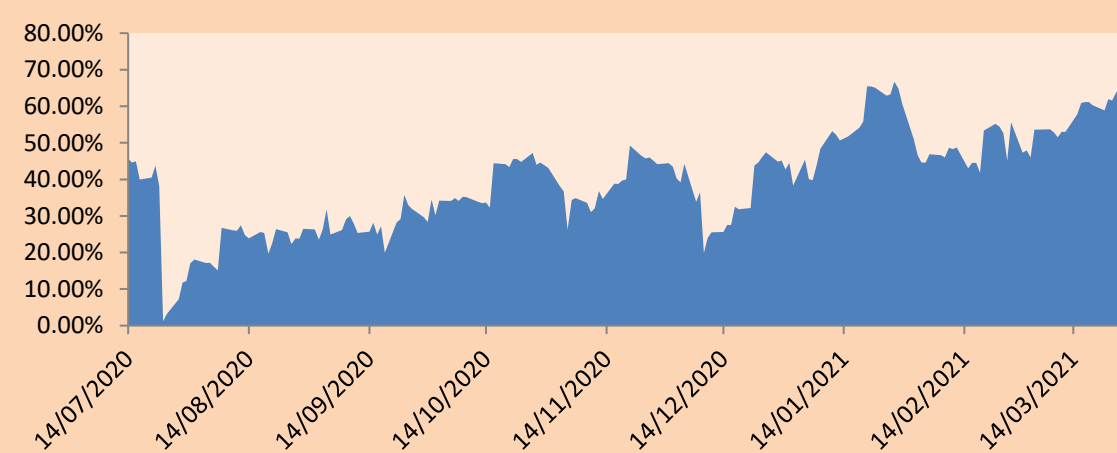
Sectorial Indices

	Close	1D*	5D*	30D*	YTD*	Beta
▼ S&P/BVLMining	414.94	-0.30%	-1.48%	-6.44%	6.41%	0.94
▼ S&P/BVLConsumer	1,199.37	-0.66%	-1.21%	-5.13%	10.17%	0.41
▼ S&P/BVLIndustrials	220.30	-0.16%	1.49%	0.10%	15.61%	0.49
▼ S&P/BVLFinancials	935.95	-1.11%	-0.20%	-11.12%	-9.47%	1.77
▲ S&P/BVLConstruction	230.38	0.34%	1.85%	-1.64%	10.17%	0.54
- S&P/BVLPublicSvcs	658.90	0.00%	0.58%	3.29%	7.30%	0.14
- S&P/BVLElectricUtil	643.25	0.00%	0.58%	3.29%	7.29%	0.14

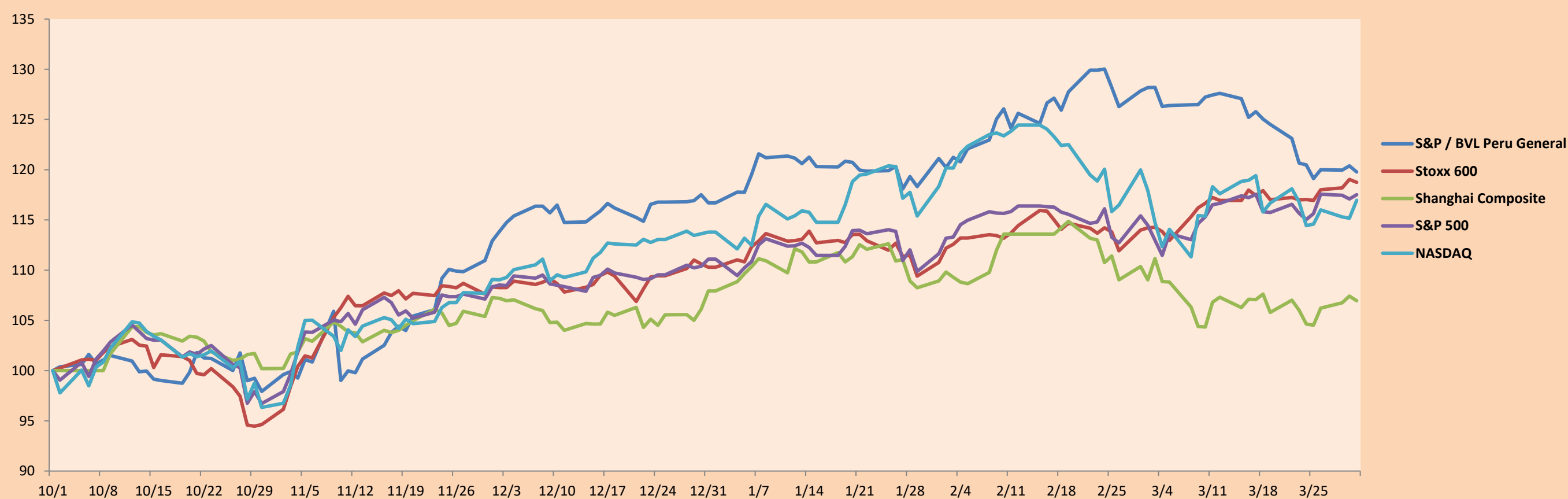
S&P/BVLConstructionTRPEN

*Legend: Variation 1D: 1 Day; 5D: 5 Days, 1M: 1 Month; YTD: Var.% 12/31/20 to date

Correlation Graph of Returns of Mining Index against Metallic Index of London (3 months)



Indices (6 months)



Base: 01/10/20=100
Source: Bloomberg

Capital Market Laboratory Coordinator: Economist Bruno Bellido
Collaboration: Maria Camarena, Alonso García, Adrian Paredes and Jairo Valverde
email: pulsobursatil@ulima.edu.pe
facebook: www.facebook.com/pulsobursatil.ul

SOVEREIGN RATING

RISK RATINGS

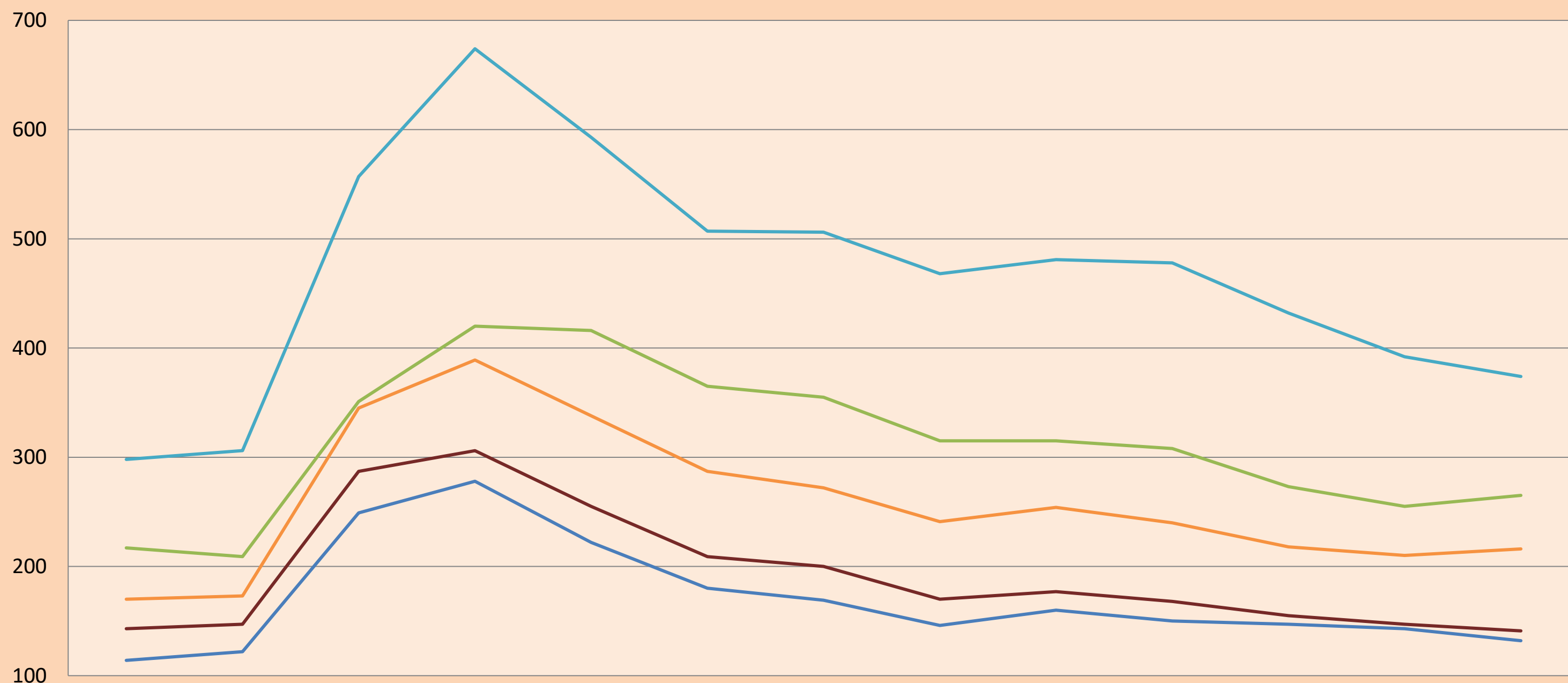
Moody's	S&P	Fitch	
Aaa	AAA	AAA	Prime
Aa1	AA+	AA+	High credit quality
Aa2	AA	AA	
Aa3	AA-	AA-	
A1	A+	A+	Medium-high grade, with low credit risk
A2	A	A	
A3	A-	A-	
Baa1	BBB+	BBB+	Moderate Credit Risk
Baa2	BBB	BBB	
Baa3	BBB-	BBB-	
Ba1	BB+	BB+	It has speculative elements and it is subject to substantial credit risk
Ba2	BB	BB	
Ba3	BB-	BB-	
B1	B+	B+	It is considered speculative and it has high credit risk
B2	B	B	
B3	B-	B-	
Caa1	CCC+	CCC	Bad credit conditions and it is subject to high credit risk
Caa2	CCC		
Caa3	CCC-		
Ca	CC	DDD	Very close to default or in default
	C		
C	D		

Source: Bloomberg

Latin America Credit Rating			
Clasificadora de riesgo			
Country	Moody's	Fitch	S&P
Peru	A3	BBB+	BBB+
México	Ba2	BB-	BB-
Venezuela	C	WD	SD
Brazil	Ba2	BB-	BB-
Colombia	Baa2	BBB-	BBB-
Chile	A1	A-	A
Argentine	Ca	WD	CCC+
Panama	Baa2	BBB-	BBB

Source: Bloomberg

LATAM Country Risk (bps)



	Ene-20	Feb-20	Mar-20	Abr-20	May-20	Jun-20	Jul-20	Ago-20	Set-20	Oct-20	Nov-20	Dic-20	Ene-21
Perú	114	122	249	278	222	180	169	146	160	150	147	143	132
Brasil	217	209	351	420	416	365	355	315	315	308	273	255	265
México	298	306	557	674	593	507	506	468	481	478	432	392	374
Colombia	170	173	345	389	338	287	272	241	254	240	218	210	216
Chile	143	147	287	306	255	209	200	170	177	168	155	147	141

Source: BCRP

Capital Market Laboratory Coordinator: Economist Bruno Bellido
Collaboration: Maria Camarena, Alonso García, Adrián Paredes and Jairo Valverde
email: pulsobursatil@ulima.edu.pe
facebook: www.facebook.com/pulsobursatil.ul