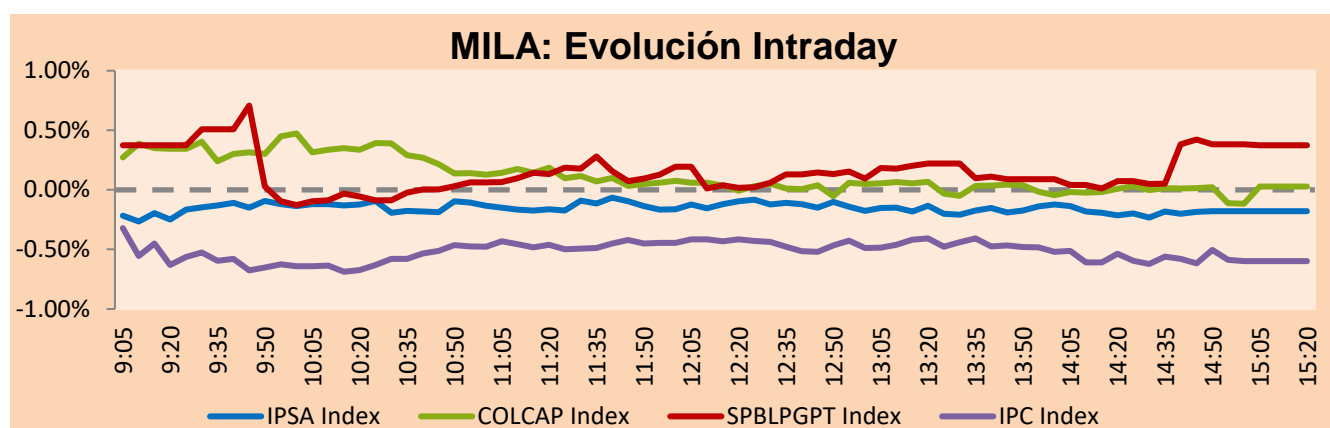


## MILA

Lima, April 6, 2021

Main Indexes	Close	1 D	5 D	1 M	YTD	Cap. Burs. (US\$ bill)
▼ IPSA (Chile)	4,860.65	-0.22%	-1.14%	3.12%	16.36%	134.06
▼ IGPA (Chile)	24,549.11	-0.18%	-0.87%	3.21%	16.86%	161.49
▼ COLSC (Colombia)	1,040.40	-0.38%	-0.94%	-1.37%	-1.76%	5.34
▲ COLCAP (Colombia)	1,324.35	0.03%	0.75%	-1.51%	-7.90%	78.55
▲ S&P/BVL (Perú)*	21,510.32	0.38%	0.47%	-4.61%	3.30%	110.54
▼ S&P/BVL SEL (Perú)	570.31	-0.32%	-0.38%	-4.99%	3.43%	97.24
▲ S&P/BVL LIMA 25	28,800.50	0.12%	0.08%	-2.26%	14.29%	109.53
▼ IPC (México)	47,985.43	-0.54%	1.28%	3.55%	8.89%	300.86
▲ S&P MILA 40	552.38	0.97%	2.19%	1.36%	3.32%	6,066.45

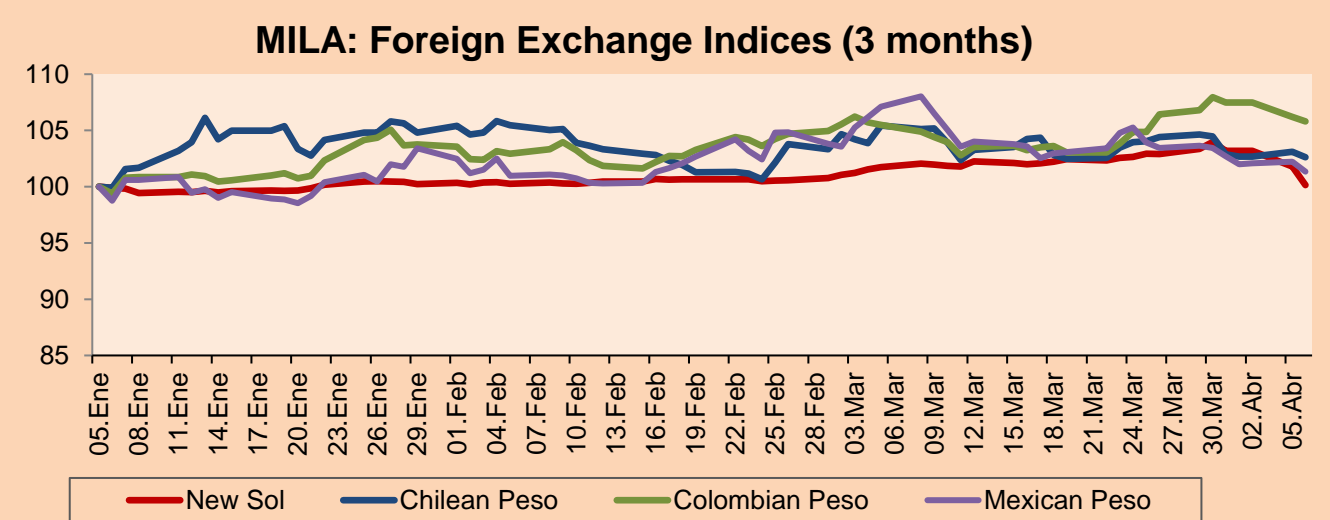
\*Legend: Variation 1D: 1 day; 5D: 5 days; 1M: 1 Month; YTD: Var% 12/31/20 to date



Source: Bloomberg

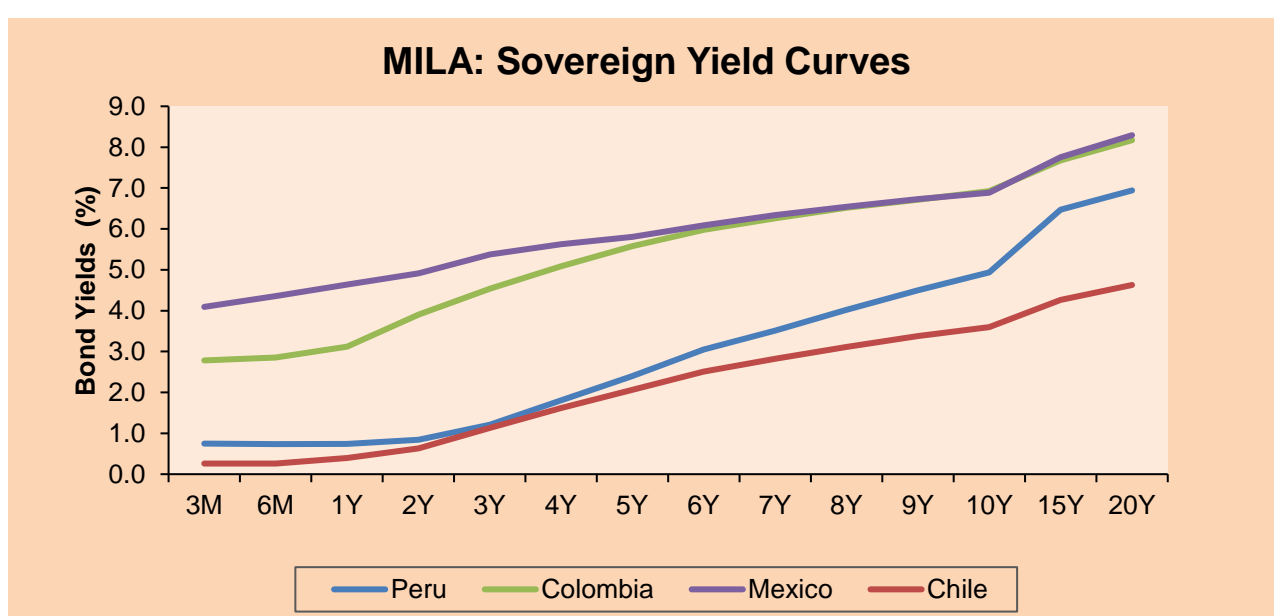
Currency	Price	1D*	5D*	30 D*	YTD*
▼ Sol (PEN)	3.6335	-1.62%	-3.67%	-1.56%	0.43%
▼ Chilean Peso (CLP)	717.20	-0.47%	-1.78%	-2.69%	0.76%
▼ Colombian Peso (COP)	3,646.17	-0.38%	-2.00%	0.30%	6.31%
▼ Mexican Peso (MXN)	20.16	-0.85%	-2.04%	-5.39%	1.25%

\*Legend: Variation 1D: 1 day; 5D: 5 days; 1M: 1 Month; YTD: Var% 12/31/20 to date



Base: 05/01/21=100  
Source: Bloomberg

Fixed Income	Currency	Price	Bid Yield (%)	Ask Yield (%)	Duration
PERU 7.35 07/21/25	USD	124.309	1.53	1.42	3.76
PERU 4.125 08/25/27	USD	112.544	2.07	1.97	5.72
PERU 8.75 11/21/33	USD	158.005	3.18	3.11	8.71
PERU 6.55 03/14/37	USD	137.781	3.48	3.42	10.55
PERU 5.625 11/18/2050	USD	136.206	3.65	3.60	16.44
CHILE 2.25 10/30/22	USD	102.761	0.60	0.35	1.52
CHILE 3.125 01/21/26	USD	108.262	1.39	1.29	4.48
CHILE 3.625 10/30/42	USD	106.645	3.21	3.18	15.32
COLOM 11.85 03/09/28	USD	158.532	2.68	2.45	5.32
COLOM 10.375 01/28/33	USD	153.85	4.56	4.36	7.85
COLOM 7.375 09/18/37	USD	134.886	4.42	4.34	10.65
COLOM 6.125 01/18/41	USD	121.667	4.50	4.43	12.33
MEX 4 10/02/23	USD	121.667	4.495	4.433	12.33
MEX5.55 01/45	USD	117.112	4.41	4.36	14.08



Source: Bloomberg

### Equity

Largest gains	Exchange	Currency	Price	▲%	Largest losses	Exchange	Currency	Price	▼%
CREDICORP LTD	Peru	USD	146.33	4.36	CEMEX SAB-CPO	Mexico	MXN	14.17	-3.34
GRUPO TELEV-CPO	Mexico	MXN	38.50	3.61	WALMART DE MEXIC	Mexico	MXN	65.11	-2.62
FOMENTO ECON-UBD	Mexico	MXN	163.02	2.10	GRUPO F BANORT-O	Mexico	MXN	120.08	-2.15
INDUSTRIAS PENOL	Mexico	MXN	267.85	2.07	FIBRA TERRA	Mexico	MXN	30.42	-1.55
CENCOSUD SHOPPIN	Chile	CLP	1490.00	2.05	ECOPETROL	Colombia	COP	2289	-1.55

Per Turnover	Exchange	Amount (US\$)	Per Volume	Exchange	Volume
GRUPO MEXICO-B	Mexico	42,429,360	ITAU CORPBANCA	Chile	218,579,545
GRUPO F BANORT-O	Mexico	24,696,243	ENEL AMERICAS SA	Chile	65,743,588
AMERICA MOVIL-L	Mexico	20,551,675	ENEL CHILE SA	Chile	61,708,405
FOMENTO ECON-UBD	Mexico	19,147,321	BANCO SANTANDER	Chile	41,564,797
CMPC	Chile	15,359,774	COLBUN SA	Chile	40,879,950

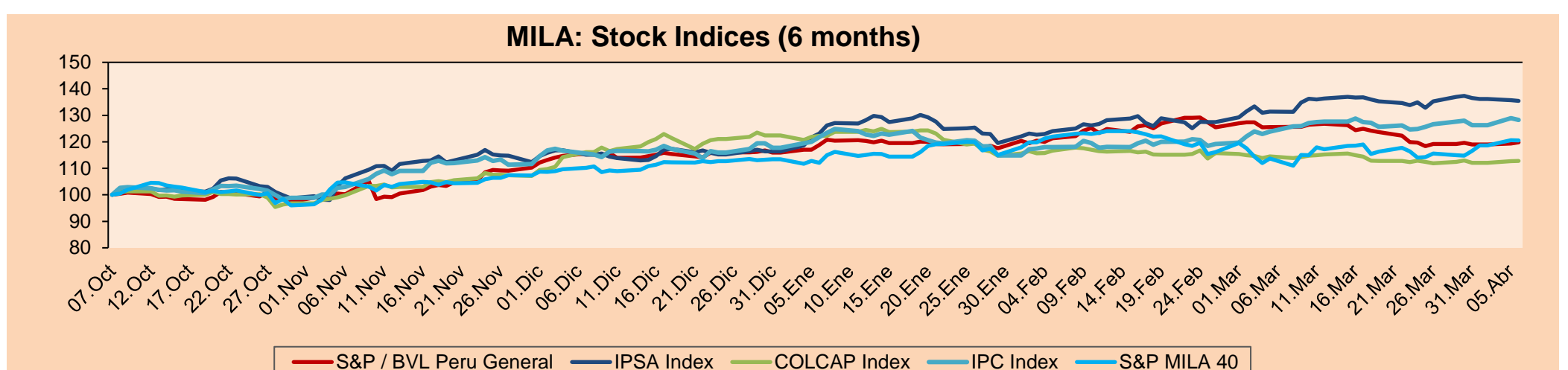
### MILA

Peru: The General Index of BVL ended today's session with a positive result of +0.38%. The index maintains an annual cumulative positive trend of +2.86% in local currency, while the dollar-adjusted performance amounted to +0.81%. Then, the S&P / BVL Peru SEL varied by -0.32% while the S&P / BVL LIMA 25 by +0.12%. The spot PEN reached S / 3.6335. Headline: Credicorp shares rise to eight-week high, outperforming the S&P 500.

Chile: The IPSA index ended the day with a negative return of -0.22%. The worst performing stocks were Aguas Metropolitanas (-2.20%) and Plaza SA (-2.11%). Headline: Quarantines could translate into an economy drop of up to 5% in April versus March.

Colombia: The COLCAP index closed today with a positive return of +0.03%. The most benefited sectors of the day were Materials (+0.88%) and Utilities (+0.23%). The best performing stocks were Cementos Argos SA (+2.02%) and Inversiones Argos SA (+1.95%). Headline: Colombia's export value rises for the first time in 13 months.

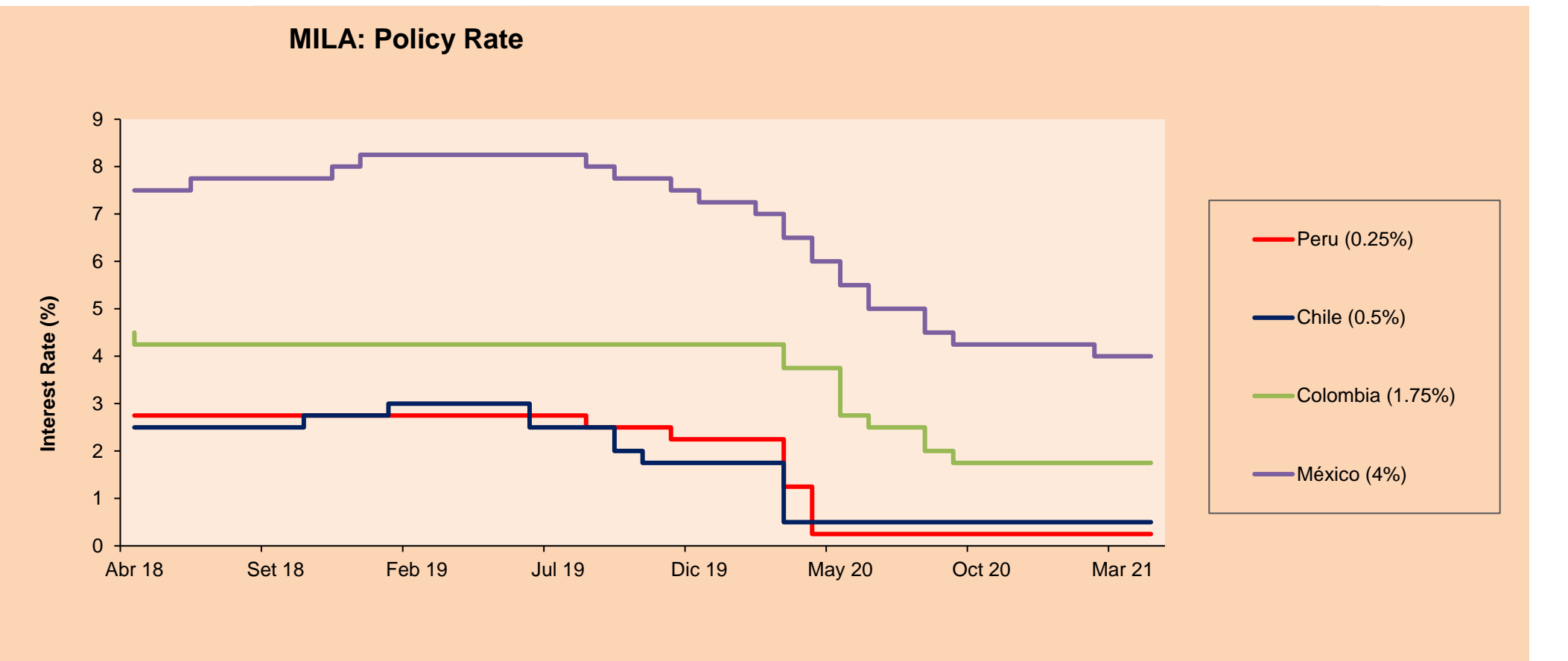
Mexico: The IPC index closed the day with a negative return of -0.54%. The best performing stocks were Grupo Televisa (+3.61%) and El Puerto de Liverpool SAB (+2.38%). Headline: Moderate declines prevail in Cetes, pending the inflation data.



Base: 08/10/20=100  
Source: Bloomberg

### ETFs

ETFs	Curr.	Close	1D	5D	30 D	YTD	Exchange
▲ iShares MSCI All Peru Caped Index Fund	USD	35.742	2.41%	5.12%	-0.74%	3.06%	NYSE Arca
▲ iShares MSCI All Chile Caped Index Fund	USD	34.3	0.47%	1.22%	6.06%	13.54%	Cboe BZX
▲ Global X MSCI Colombia	USD	10.315	0.98%	2.64%	-0.28%	-9.20%	NYSE Arca
▲ iShares MSCI Mexico Capped	USD	45.36	0.29%	2.49%	9.04%	5.51%	NYSE Arca
▲ iShares MSCI Emerging Markets	USD	54.37	0.55%	2.45%	1.00%	5.23%	NYSE Arca
▲ Vanguard FTSE Emerging Markets	USD	52.88	0.48%	2.05%	0.53%	5.53%	NYSE Arca
▲ iShares Core MSCI Emerging Markets	USD	65.6	0.54%	2.39%	1.17%	5.74%	NYSE Arca
▲ iShares JP Morgan Emerging Markets Bonds	USD	63.59	0.27%	1.19%	1.57%	4.11%	Cboe BZX
▲ Morgan Stanley Emerging Markets Domestic	USD	6.02	0.17%	2.03%	0.84%	-4.29%	New York

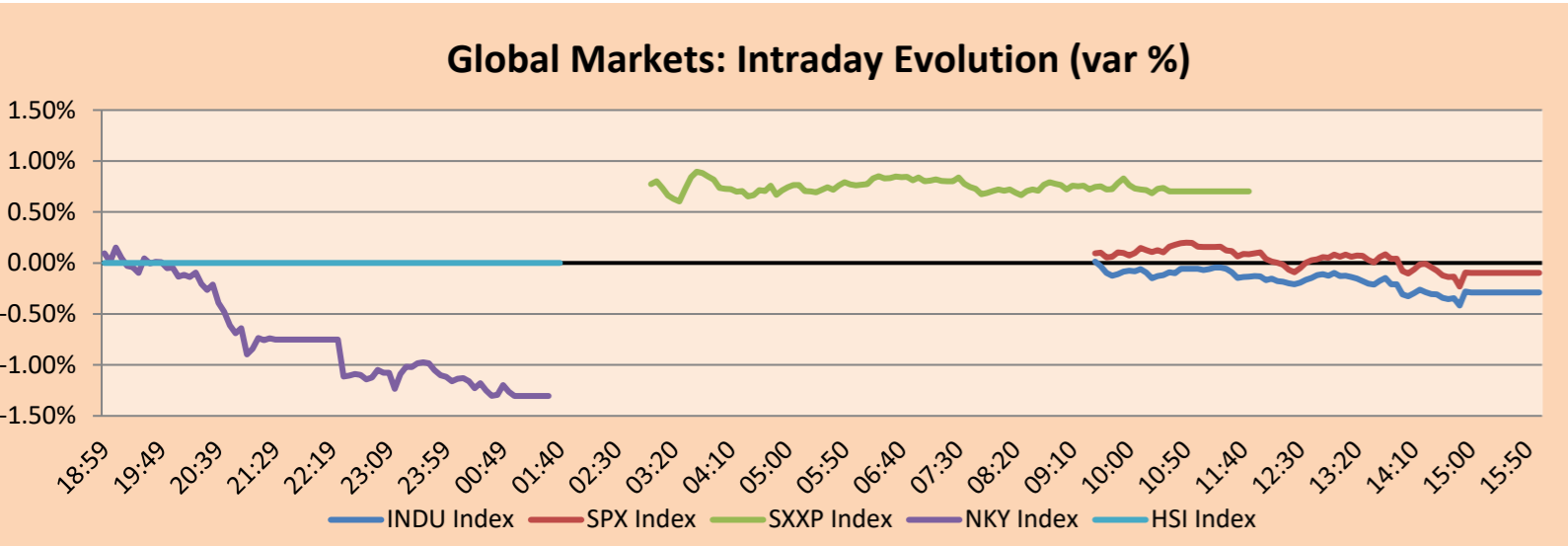


Source: Bloomberg

## WORLD

Main Indices	Close	1 D*	5 D*	1 M*	YTD*	Market Cap. (US\$ Mill.)
▼ Dow Jones (USA)	33,430.24	-0.29%	0.78%	6.14%	9.23%	10,082,965
▼ Standard & Poor's 500 (EEUU)	4,073.94	-0.10%	2.59%	6.04%	8.46%	36,033,367
▼ NASDAQ Composite (USA)	13,698.38	-0.05%	4.89%	6.02%	6.29%	22,430,296
▲ Stoxx EUROPE 600 (Europe)	435.26	0.70%	1.95%	6.50%	9.08%	10,066,185
▲ DAX (Germany)	15,212.68	0.70%	3.14%	9.28%	10.89%	1,163,724
▲ FTSE 100 (United Kingdom)	6,823.55	1.28%	1.23%	2.91%	5.62%	1,428,744
▲ CAC 40 (France)	6,131.34	0.47%	2.38%	6.03%	10.45%	1,685,581
▲ IBEX 35 (Spain)	8,634.60	0.66%	1.61%	4.20%	6.95%	483,841
▲ MSCI AC Asia Pacific Index	207.30	0.09%	1.11%	0.63%	3.69%	26,240,331
▲ HANG SENG (Hong kong)	28,938.74	1.97%	3.72%	-1.00%	5.78%	4,437,388
▼ SHANGHAI SE Comp. (China)	3,482.97	-0.04%	1.39%	-1.22%	-0.41%	6,572,075
▼ NIKKEI 225 (Japan)	29,696.63	-1.30%	-0.90%	2.70%	8.02%	3,993,517
▲ S&P / ASX 200 (Australia)	6,885.86	0.84%	0.90%	2.87%	4.80%	1,682,246
▼ KOSPI (South Korea)	3,127.08	-0.54%	1.28%	3.68%	9.19%	1,875,001

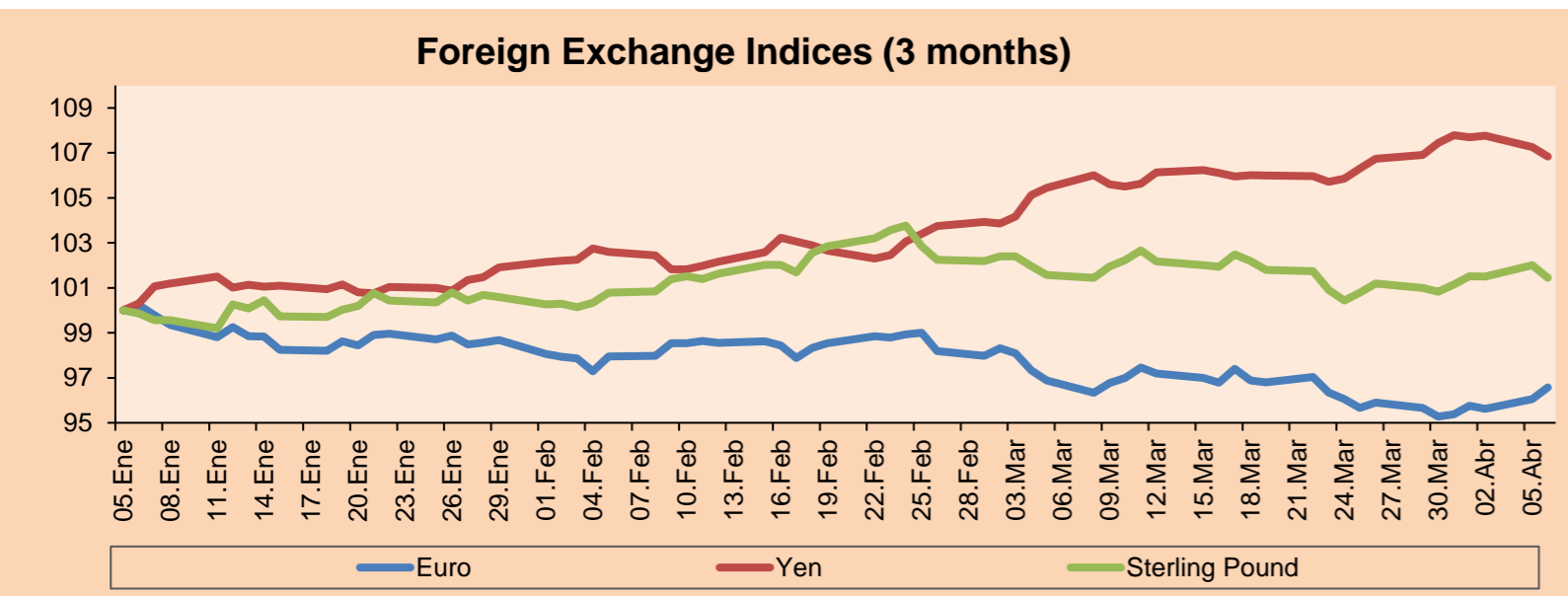
\*Legend: Variation 1D: 1 Day; 5D: 5 Days; 1M: 1 Month; YTD: Var.% 12/31/20 to date



Source: Bloomberg

Currency	Price	1 D*	5 D*	1 M*	YTD*
▲ Euro	1.1876	0.53%	1.36%	-0.33%	-2.78%
▼ Yen	109.7500	-0.39%	-0.55%	1.33%	6.30%
▼ Sterling Pound	1.3824	-0.55%	0.61%	-0.12%	1.13%
▼ Yuan	6.5395	-0.42%	-0.49%	0.65%	0.19%
▲ Hong Kong Dollar	7.7766	0.01%	0.02%	0.17%	0.30%
▼ Brazilian Real	5.5917	-1.30%	-3.17%	-1.61%	7.56%
▲ Argentine Peso	92.2842	0.13%	0.36%	2.12%	9.67%

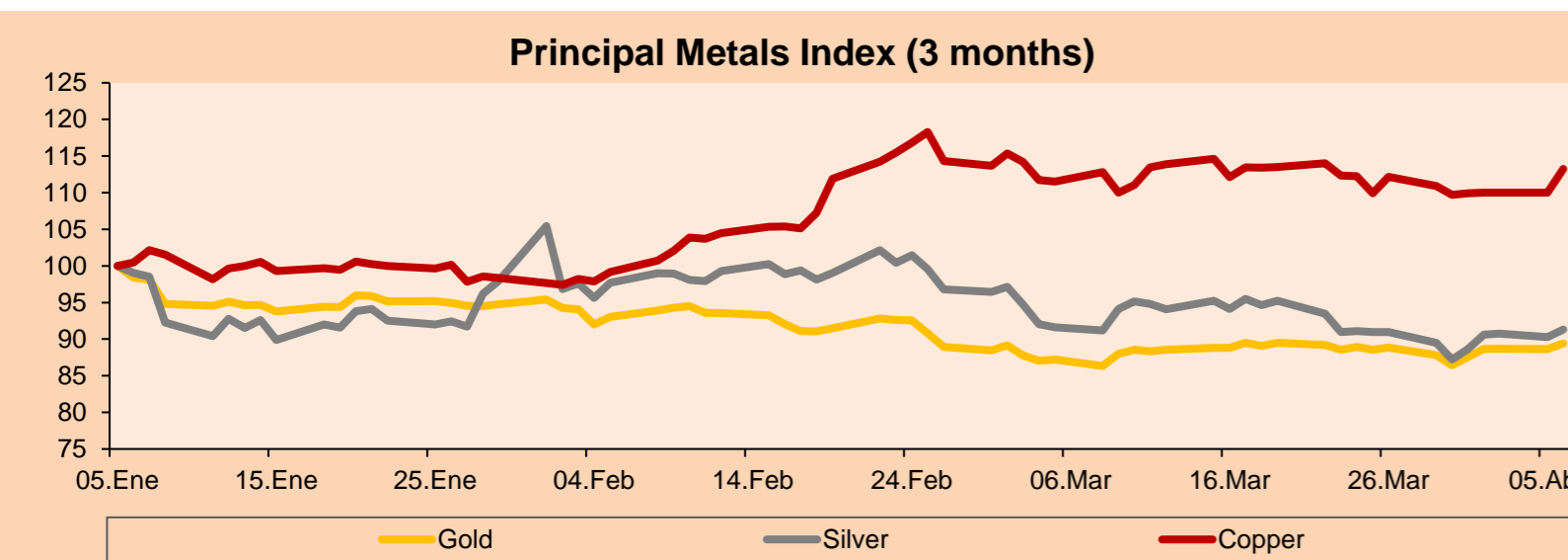
\*Legend: Variation 1D: 1 Day; 5D: 5 Days; 1M: 1 Month; YTD: Var.% 12/31/20 to date



Base: 05/01/21=100  
Source: Bloomberg

Commodities	Close	1 D*	5 D*	1 M*	YTD*
▲ Oro (US\$ Oz. T) (LME)	1,743.27	0.87%	3.45%	2.51%	-8.17%
▲ Plata (US\$ Oz. T) (LME)	25.16	1.14%	4.71%	-0.34%	-4.70%
▲ Cobre (US\$ TM) (LME)	9,053.75	2.95%	3.23%	1.58%	16.84%
▲ Zinc (US\$ TM) (LME)	2,805.80	1.76%	0.31%	1.89%	2.80%
▲ Petróleo WTI (US\$ Barril) (NYM)	59.33	1.16%	-2.01%	-10.00%	21.85%
▲ Estaño (US\$ TM) (LME)	27,775.00	4.11%	3.60%	5.19%	35.19%
▲ Plomo (US\$ TM) (LME)	1,946.00	0.23%	-0.04%	-1.89%	-1.51%
▲ Azúcar #11 (US\$ Libra) (NYB-ICE)	15.16	2.16%	1.61%	-7.56%	3.27%
▲ Cacao (US\$ TM) (NYB-ICE)	2,425.00	2.58%	1.72%	-4.75%	-3.42%
▲ Café Arábica (US\$ TM) (NYB-ICE)	126.85	3.89%	3.47%	-1.55%	-2.54%

\*Leyenda: Variación 1D: 1 Día; 5D: 5 Días; 1M: 1 Mes; YTD: Var.% 31/12/20 a la fecha



Base: 05/01/21=100  
Source: Bloomberg

## Equity

Germany (Stocks from DAX Index)

Largest gains	Curr.	Price	▲ %	Exchange	Largest losses	Curr.	Price	▼ %	Exchange
SAP GY	EUR	108.9	1.99	Xetra	ENR GY	EUR	30.04	-3.41	Xetra
ADS GY	EUR	276	1.94	Xetra	MTX GY	EUR	204.3	-1.45	Xetra
FRE GY	EUR	38.475	1.79	Xetra	DHER GY	EUR	113.35	-1.22	Xetra
1COV GY	EUR	58.26	1.68	Xetra	RWE GY	EUR	33.89	-1.17	Xetra

Europe (Stocks from STOXX EUROPE 600)

Largest gains	Curr.	Price	▲ %	Exchange	Largest losses	Curr.	Price	▼ %	Exchange
TOM NO	NOK	395.6	6.83	Oslo	ANA SQ	EUR	137.1	-4.86	Soc.Bol SIBE
AMBUB DC	DKK	318	6.75	Copenhagen	ELI BB	EUR	89.6	-4.68	EN Brussels
NOD NO	NOK	163.3	6.52	Oslo	VWS DC	DKK	1249	-4.07	Copenhagen
SINCH SS	SEK	1600	5.96	Stockholm	DTE GY	EUR	16.57	-3.94	Xetra

## Global Overview:

### United States:

Major U.S. indices closed with losses after a sudden increase in U.S. Treasury yields. In economic data, Friday's jobs report showed that the U.S. economy added more jobs than forecast, pushing the unemployment rate to 6%. Separately, the IMF today upgraded its forecast for global economic growth to 6% driven by rapid recovery in China and the United States. The Securities and Exchange Commission (SEC) approved Coinbase's IPO on April 14 on the NASDAQ index, making it the first digital currency company to be listed on the market. Thus, the S&P 500 closed with losses dragged down by technology -0.38% and the healthcare sector -0.36% after a profit-taking by investors following the good run of the last sessions. In this regard, Bank of America pointed out that investors are betting on a general sell-off in stocks near all-time highs. Thus, Dow -0.29%, S&P 500 -0.10%, Nasdaq -0.05% ended the day slightly lower.

### Europe:

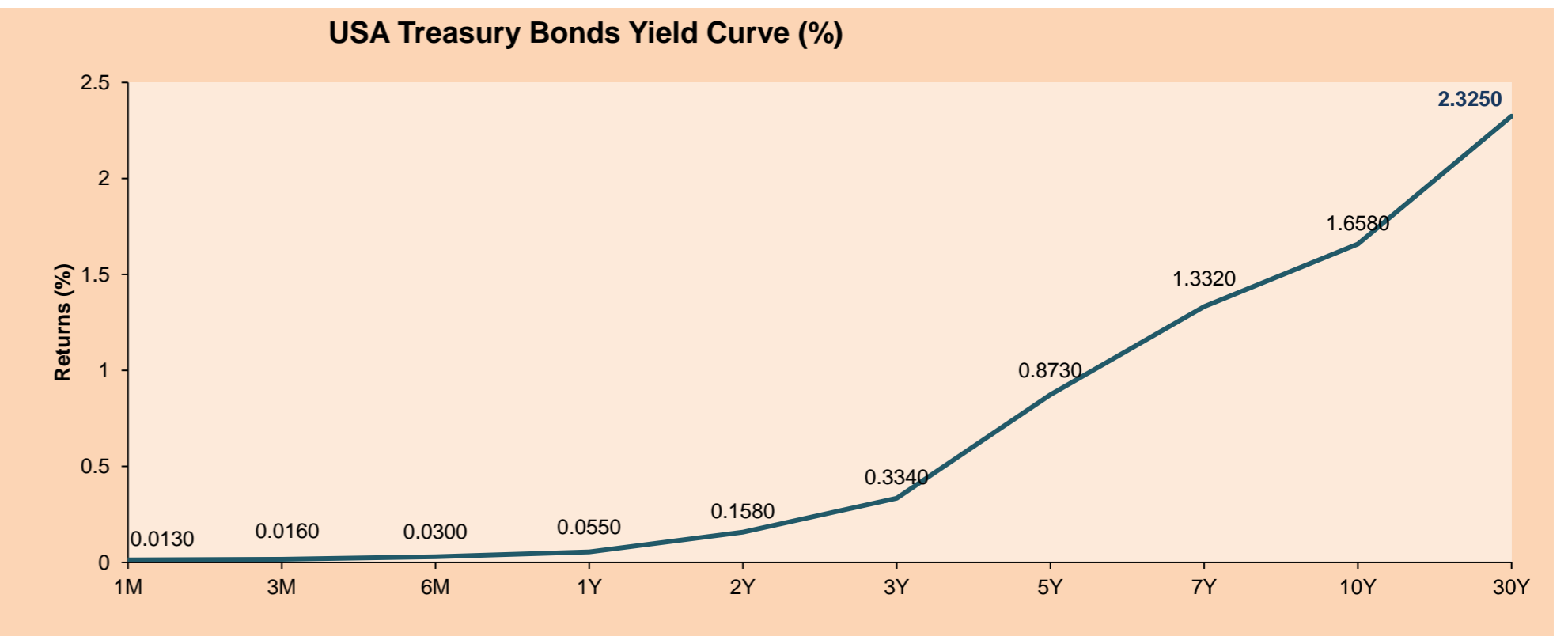
European markets posted positive returns on optimism for the global recovery, driven by Biden's plans and vaccination programs. After a return for Easter, the STOXX 600 has recovered all its losses, which were driven by the pandemic, due to positivism with a rapid economic recovery. Likewise, sensitive sectors such as banking, commodity and automakers have had a strong recovery this year. On the other hand, Credit Suisse rose 0.4% after heavy losses the week before, as it announced an estimated loss of 4.4 billion Swiss francs (\$ 4.7 billion) from its relationship with Archegos Capital Management. British Prime Minister Boris Johnson said the next phase of economic reopening would be implemented next week, giving good news for London stocks. On the other hand, unemployment was unchanged in February; despite a rising reading for January, due to the mitigation of the second pandemic wave and government policies for worker protection. Thus, the STOXX 600 + 0.7%, CAC 40 + 0.47%, FTSE 100 + 1.28% and DAX + 0.7% closed with positive returns.

### Asia:

The main Asian indices had mixed results, due to a possible new wave of COVID19 and increased foreign buying. Chinese indices, excluding Hong Kong, which did not participate due to the Ching Ming festival holiday, fell on pressure from healthcare and consumer companies. This was caused by a likely tightening of their policies. In Japan, there was a drop in stock market shares due to concerns about the economic impact of a possible fourth wave of COVID19. In South Korea, stocks rallied on increased foreign buying, which is related to the expectation of an early recovery in the United States. Finally, Australia closed with a growth in its shares, after Qantas Airlines +3.14% were boosted by the travel bubble, on a par with New Zealand shares. In addition, technology stocks, such as AfterPay +9.97%, had the strongest growth since February. Thus, S&P / ASX 200 +0.84%, KOSPI +0.20%, Nikkei -1.30%, CSI 300 -0.41% closed mixed.

## ETFs

ETFs	Curr.	Close	1D	5D	30 D	YTD	Exchange
SPDR S&P 500 ETF TRUST	USD	406.12	-0.06%	2.89%	5.86%	8.62%	NYSE Arca
ISHARES MSCI EMERGING MARKET	USD	54.37	0.55%	2.45%	1.00%	5.23%	NYSE Arca
ISHARES IBOXX HIGH YLD CORP	USD	87.26	0.17%	0.58%	0.74%	-0.05%	NYSE Arca
FINANCIAL SELECT SECTOR SPDR	USD	34.67	-0.20%	1.05%	2.85%	17.61%	NYSE Arca
VANECK GOLD MINERS	USD	34.28	1.69%	7.70%	7.87%	-4.83%	NYSE Arca
ISHARES RUSSELL 2000 ETF	USD	224.31	-0.29%	2.89%	3.03%	14.41%	NYSE Arca
SPDR GOLD SHARES	USD	163.22	0.80%	3.59%	2.56%	-8.49%	NYSE Arca
ISHARES 20+ YEAR TREASURY BO	USD	137.84	0.68%	1.20%	-0.77%	-12.61%	NASDAQ GM
INVESTCO QQ TRUST SERIES 1	USD	330.82	-0.07%	5.25%	7.17%	5.44%	NASDAQ GM
ISHARES NASDAQ BIOTECHNOLOGY	USD	151.57	-0.39%	3.33%	0.95%	0.05%	NASDAQ GM
ENERGY SELECT SECTOR SPDR	USD	48.98	-0.26%	-0.85%	-7.50%	29.23%	NYSE Arca
PROSHARES ULTRA VIX ST FUTUR	USD	5.20	1.17%	-8.93%	-40.37%	-51.17%	Cboe BZX
UNITED STATES OIL FUND LP	USD	40.70	1.04%	-1.14%	-8.42%	23.30%	NYSE Arca
ISHARES MSCI BRAZIL ETF	USD	33.95	1.10%	3.54%	2.91%	-8.42%	NYSE Arca
SPDR S&P OIL & GAS EXP & PR	USD	82.00	0.70%	1.55%	-8.89%	40.17%	NYSE Arca
UTILITIES SELECT SECTOR SPDR	USD	65.02	0.53%	2.28%	8.95%	3.70%	NYSE Arca
ISHARES US REAL ESTATE ETF	USD	94.20	0.27%	2.04%	9.12%	9.98%	NYSE Arca
SPDR S&P BIOTECH ETF	USD	135.00	-2.62%	3.76%	-2.72%	-4.11%	NYSE Arca
ISHARES IBOXX INVESTMENT GRA	USD	130.84	0.67%	0.87%	0.83%	-5.28%	NYSE Arca
ISHARES JP MORGAN USD EMERGI	USD	109.63	0.34%	0.82%	0.95%	-5.42%	NASDAQ GM
REAL ESTATE SELECT SECT SPDR	USD	40.43	0.25%	1.97%	9.74%	10.59%	NYSE Arca
ISHARES CHINA LARGE-CAP ETF	USD	47.58	0.19%	2.08%	-2.60%	2.48%	NYSE Arca
CONSUMER STAPLES SPDR	USD	69.14	0.42%	0.89%	6.86%	2.51%	NYSE Arca
VANECK JR GOLD MINERS	USD	47.91	2.55%	10.01%	5.04%	-11.67%	NYSE Arca
SPDR BBG BARC HIGH YIELD BND	USD	108.93	0.17%	0.51%	0.67%	-0.01%	NYSE Arca
VANGUARD REAL ESTATE ETF	USD	94.13	0.26%	1.85%	8.37%	10.83%	NYSE Arca
GRAYSCALE BITCOIN TRUST BTC	USD	50.62	-4.40%	-0.39%	15.57%	58.19%	OTC US



Source: Bloomberg

# LIMA

## Stocks

Ticker	Currency	Price	1D*	5D*	30D*	YTD*	Frequency	Volume (US\$)	Beta	Dividend Yield (%)	Price Earning	Market Cap. (M US\$)	Economic Sector*	Index Weight
▼ ALICORC1 PE**	S/.	7.74	-0.38%	-0.94%	-1.37%	-1.76%	100.00%	98,880	0.68	3.23	20.21	1,817.07	Industrial	3.53%
ATACOB1 PE**	S/.	0.15	0.00%	0.00%	-8.07%	7.25%	55.56%	920	1.09	0.00	-	38.48	Mining	1.02%
▲ BACKUS1 PE**	S/.	22.90	0.88%	2.92%	-1.51%	13.65%	94.44%	51,767	0.54	1.53	10.98	8,691.41	Industrial	0.82%
▲ BAP PE**	US\$	146.33	4.36%	5.71%	-5.35%	-8.89%	100.00%	768,913	1.64	6.02	-	13,810.96	Diverse	5.82%
▲ BVN PE**	US\$	10.25	1.99%	2.40%	-10.71%	-14.58%	100.00%	128,107	1.17	0.00	-	2,825.25	Mining	5.88%
▲ CASAGRC1 PE**	S/.	6.15	1.32%	3.36%	4.95%	29.47%	88.89%	40,265	0.55	3.67	11.04	142.57	Agricultural	1.31%
▲ BBVAC1 PE**	S/.	2.47	2.07%	1.65%	2.92%	13.82%	100.00%	15,291	0.67	3.49	25.85	4,438.43	Finance	2.85%
▼ CORARE1 PE**	S/.	1.15	-1.71%	0.00%	0.00%	29.21%	100.00%	45,395	0.56	6.07	6.86	418.73	Industrial	1.72%
▼ CPACASC1 PE**	S/.	5.80	-1.19%	-0.85%	-2.03%	9.43%	94.44%	10,597	0.60	3.97	41.43	740.90	Industrial	2.38%
- CVERDEC1 PE**	US\$	25.10	0.00%	2.45%	-3.94%	19.98%	100.00%	64,284	0.90	0.00	32.01	8,786.41	Mining	5.25%
▼ ENGEPEC1 PE**	S/.	2.55	-0.78%	-1.92%	-1.92%	27.50%	83.33%	3,790	0.50	8.62	15.59	1,992.24	Public Services	1.44%
- ENDISPC1**	S/.	6.05	0.00%	0.00%	2.54%	12.04%	44.44%	3,330	0.48	0.00	14.19	1,063.25	Public Services	0.98%
▲ FERREYC1 PE**	S/.	2.22	0.91%	-1.33%	3.74%	27.59%	100.00%	136,614	0.58	3.45	14.77	596.12	Diverse	4.90%
- AENZAC1 PE**	S/.	1.80	0.00%	0.00%	2.86%	3.45%	88.89%	159,671	0.81	0.00	-	431.94	Diverse	4.05%
▼ IFS PE**	US\$	30.81	-0.13%	4.80%	-1.57%	-0.42%	100.00%	464,624	1.26	5.68	33.73	3,556.94	Diverse	7.22%
▼ INRETC1 PE**	US\$	42.00	-0.71%	-1.41%	-6.87%	7.14%	100.00%	448,095	0.65	1.34	51.85	4,317.91	Diverse	5.28%
▲ LUSURC1 PE**	S/.	14.88	0.88%	4.79%	-32.36%	-41.65%	100.00%	61,536	0.54	4.69	14.98	1,994.18	Public Services	1.81%
▲ MINSUR1 PE**	S/.	2.86	1.06%	4.00%	-1.38%	54.59%	94.44%	70,653	0.79	0.00	77.71	2,269.27	Mining	3.09%
▲ PML PE**	US\$	0.16	0.65%	3.33%	7.64%	46.23%	66.67%	3,333	1.45	0.00	-	40.95	Mining	2.12%
▲ RELAPAC1 PE**	S/.	0.13	2.29%	5.51%	4.69%	94.20%	94.44%	31,833	0.48	0.00	-	306.80	Industrial	2.12%
▲ SCCO PE**	US\$	72.20	0.60%	5.94%	0.28%	9.56%	88.89%	48,836	0.96	2.35	33.56	55,815.89	Mining	2.14%
▲ SIDERC1 PE**	S/.	1.12	0.90%	1.82%	9.80%	31.76%	88.89%	31,798	0.80	24.72	13.31	378.50	Industrial	1.43%
▼ TV PE**	US\$	0.15	-1.96%	0.00%	7.14%	2.04%	94.44%	12,224	1.47	0.00	-	148.36	Mining	2.93%
▼ UNACEMC1 PE**	S/.	1.72	-0.58%	1.18%	-2.82%	10.97%	94.44%	48,182	0.82	0.76	37.68	860.65	Industrial	3.00%
- VOLCABC1 PE**	S/.	0.82	0.00%	-3.53%	0.00%	57.69%	100.00%	138,049	0.88	0.00	-	919.99	Mining	5.90%
- NEXAPEC1 PE**	S/.	3.44	0.00%	1.18%	-11.79%	21.55%	72.22%	4,168	1.12	0.00	-	1,251.89	Mining	1.56%

Quantity of shares: 26  
Source: Bloomberg, Economática  
\* Bloomberg Industry Classification System  
\*\* PER is used in the stock market and original currency of the instrument  
\*Legend: Variation 1D: 1 Day; 5D: 5 Days, 1M: 1 Month; YTD: Var.% 12/31/20 to date

Up 12  
Down 8  
Hold 6

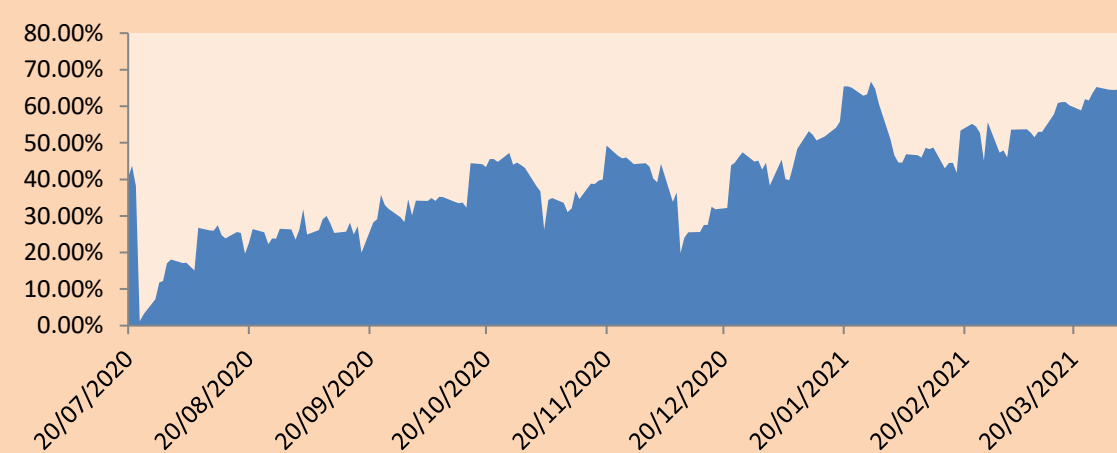
### Sectorial Indices

	Close	1D*	5D*	30D*	YTD*	Beta
▼ S&P/BVLMining	419.38	-0.58%	0.77%	-4.20%	7.55%	0.94
▼ S&P/BVLConsumer	1,187.32	-0.68%	-1.66%	-6.11%	9.07%	0.41
▲ S&P/BVLIndustrials	220.05	-0.07%	-0.28%	0.74%	15.48%	0.50
▲ S&P/BVLFinancials	962.51	2.22%	1.69%	-6.04%	-6.91%	1.76
▼ S&P/BVLConstruction	229.85	-0.55%	0.11%	-0.64%	9.91%	0.54
▼ S&P/BVLPublicSvcs	654.73	-0.25%	-0.63%	1.57%	6.62%	0.13
▼ S&P/BVLElectricUtil	639.18	-0.25%	-0.63%	1.57%	6.62%	0.13

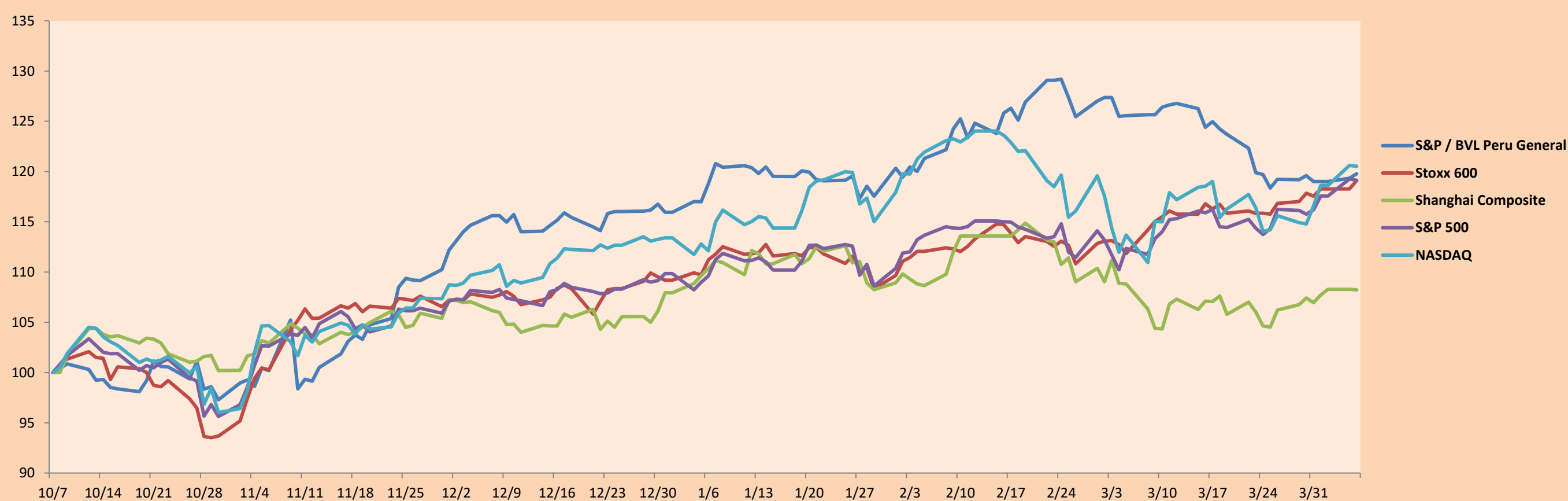
S&P/BVLConstructionTRPEN

\*Legend: Variation 1D: 1 Day; 5D: 5 Days, 1M: 1 Month; YTD: Var.% 12/31/20 to date

Correlation Graph of Returns of Mining Index against Metallic Index of London (3 months)



Indices (6 months)



Base: 07/10/20=100  
Source: Bloomberg

Capital Market Laboratory Coordinator: Economist Bruno Bellido  
Collaboration: : Maria Camarena, Alonso García, Adrian Paredes y Jairo Valverde  
email: pulsobursatil@ulima.edu.pe  
facebook: www.facebook.com/pulsobursatil.ul

## SOVEREIGN RATING

### RISK RATINGS

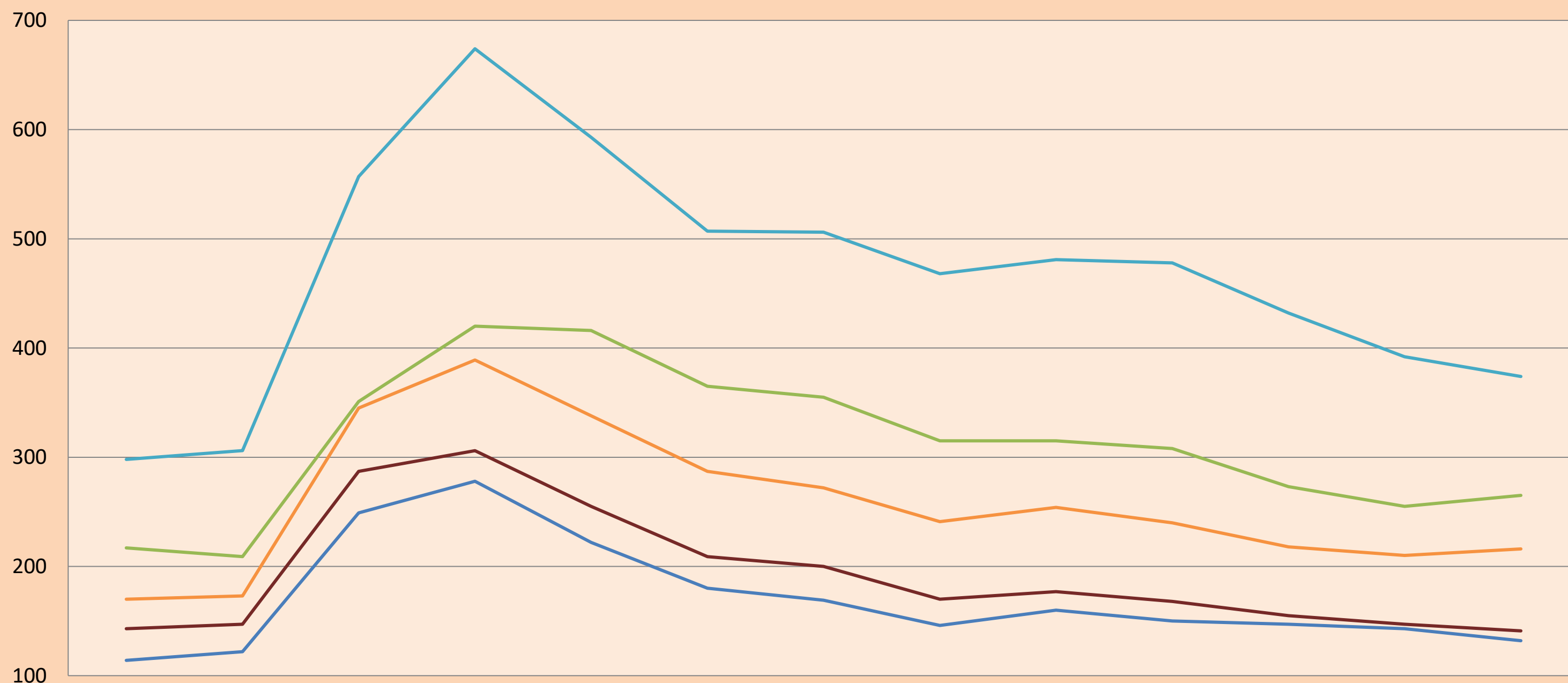
Moody's	S&P	Fitch	
Aaa	AAA	AAA	Prime
Aa1	AA+	AA+	High credit quality
Aa2	AA	AA	
Aa3	AA-	AA-	
A1	A+	A+	Medium-high grade, with low credit risk
A2	A	A	
A3	A-	A-	
Baa1	BBB+	BBB+	Moderate Credit Risk
Baa2	BBB	BBB	
Baa3	BBB-	BBB-	
Ba1	BB+	BB+	It has speculative elements and it is subject to substantial credit risk
Ba2	BB	BB	
Ba3	BB-	BB-	
B1	B+	B+	It is considered speculative and it has high credit risk
B2	B	B	
B3	B-	B-	
Caa1	CCC+	CCC	Bad credit conditions and it is subject to high credit risk
Caa2	CCC		
Caa3	CCC-		
Ca	CC	DDD	Very close to default or in default
	C		
C	D		

Source: Bloomberg

Latin America Credit Rating			
Clasificadora de riesgo			
Country	Moody's	Fitch	S&P
Peru	A3	BBB+	BBB+
México	Ba2	BB-	BB-
Venezuela	C	WD	SD
Brazil	Ba2	BB-	BB-
Colombia	Baa2	BBB-	BBB-
Chile	A1	A-	A
Argentine	Ca	WD	CCC+
Panama	Baa2	BBB-	BBB

Source: Bloomberg

### LATAM Country Risk (bps)



	Ene-20	Feb-20	Mar-20	Abr-20	May-20	Jun-20	Jul-20	Ago-20	Set-20	Oct-20	Nov-20	Dic-20	Ene-21
Perú	114	122	249	278	222	180	169	146	160	150	147	143	132
Brasil	217	209	351	420	416	365	355	315	315	308	273	255	265
México	298	306	557	674	593	507	506	468	481	478	432	392	374
Colombia	170	173	345	389	338	287	272	241	254	240	218	210	216
Chile	143	147	287	306	255	209	200	170	177	168	155	147	141

Source: BCRP

Capital Market Laboratory Coordinator: Economist Bruno Bellido  
Collaboration: : María Camarena, Alonso García, Adrian Paredes y Jairo Valverde  
email: pulsobursatil@ulima.edu.pe  
facebook: www.facebook.com/pulsobursatil.ul