

PULSO BURSÁTIL

FACULTAD DE CIENCIAS EMPRESARIALES Y ECONÓMICAS
CARRERA DE ECONOMÍA
LABORATORIO DE MERCADO DE CAPITALES

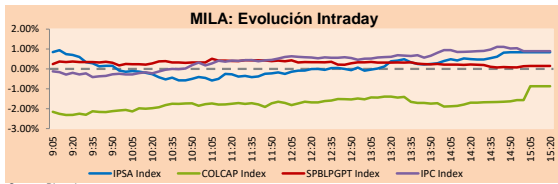


MILA

Lima, May 20, 2021

Main Indexes	Close	1 D	5 D	1 M	YTD	Cap. Burs. (US\$ bill)
▲ IPSA (Chile)	4,079.99	1.23%	-8.18%	-17.28%	-2.33%	117.27
▲ IGPA (Chile)	20,593.94	0.93%	-8.27%	-17.35%	-1.97%	140.72
▼ COLSC (Colombia)	975.23	-0.82%	-0.98%	-3.81%	-7.91%	4.51
▼ COLCAP (Colombia)	1,254.62	-0.87%	-2.39%	-3.87%	-12.75%	74.50
▲ S&P/BVL (Perú)*	21,236.33	0.15%	-1.30%	8.13%	1.99%	105.14
▲ S&P/BVL SEL (Perú)	563.45	0.36%	-1.76%	7.39%	2.18%	93.98
▲ S&P/BVL LIMA 25	27,699.40	0.15%	-2.48%	8.29%	9.92%	104.24
▲ IPC (México)	49,907.36	1.06%	2.21%	2.13%	13.25%	311.04
▼ S&P MILA 40	491.29	-0.18%	-5.71%	-11.25%	-8.11%	6,180.49

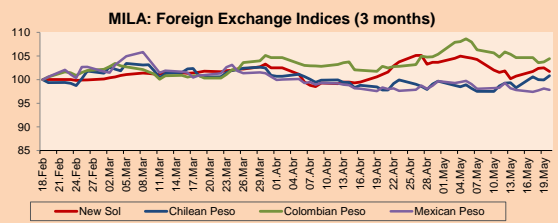
*Legend: Variation 1D: 1 day; 5D: 5 days; 1M: 1 Month; YTD: Var% 12/31/20 to date



Source: Bloomberg

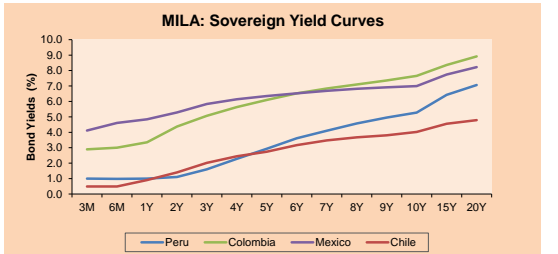
Currency	Price	1D*	5D*	30 D*	YTD*
▼ Sol (PEN)	3,7089	-0.92%	1.37%	0.45%	2.51%
▲ Chilean Peso (CLP)	718.47	0.89%	1.49%	3.10%	0.94%
▲ Colombian Peso (COP)	3,696.84	0.66%	-0.88%	1.58%	7.79%
▼ Mexican Peso (MXN)	19.87	-0.29%	-0.34%	-0.51%	-0.22%

*Legend: Variation 1D: 1 day; 5D: 5 days; 1M: 1 Month; YTD: Var% 12/31/20 to date



Base: 18/02/21=100
Source: Bloomberg

Fixed Income	Currency	Price	Bid Yield (%)	Ask Yield (%)	Duration
PERU 7.35 07/21/25	USD	123.115	1.65	1.52	3.63
PERU 4.125 08/25/27	USD	111.166	2.25	2.16	5.58
PERU 8.75 11/21/33	USD	155.724	3.32	3.24	8.81
PERU 6.55 03/14/37	USD	135.689	3.61	3.54	10.41
PERU 5.625 11/18/2050	USD	133.091	3.79	3.73	16.60
CHILE 2.25 10/30/22	USD	102.535	0.62	0.33	1.41
CHILE 3.125 01/21/26	USD	107.865	1.42	1.32	4.35
CHILE 3.625 10/30/42	USD	103.272	3.43	3.39	15.39
COLOM 11.85 03/09/28	USD	159.664	2.47	2.15	5.20
COLOM 10.375 01/28/33	USD	148.906	4.95	4.74	7.66
COLOM 7.375 09/18/37	USD	130.492	4.73	4.64	10.43
COLOM 6.125 01/18/41	USD	117.312	4.79	4.73	12.09
MEX 4 10/02/23	USD	117.312	4.792	4.725	12.09
MEX5.55 01/45	USD	117.773	4.36	4.32	14.04



Source: Bloomberg

Equity

Largest gains	Exchange	Currency	Price	▲%
SMU SA	Chile	CLP	94.01	10.68
COLBUN SA	Chile	CLP	107.49	8.56
GRUPO F BANORT-O	Mexico	MXN	136.00	5.19
CERVEZAS	Chile	CLP	6679.00	4.69
ENTEL	Chile	CLP	3650.10	4.23

Per Turnover	Exchange	Amount (US\$)
INFRAESTRUCTURA	Mexico	207,471,427
GRUPO F BANORT-O	Mexico	80,201,660
AMERICA MOVIL-L	Mexico	64,776,976
WALMART DE MEXIC	Mexico	63,821,823
GRUPO MEXICO-B	Mexico	57,420,697

Largest losses	Exchange	Currency	Price	▼%
GRUPO ENERGIA BO	Colombia	COP	2520	-3.93
GRUPO MEXICO-B	Mexico	MXN	94.79	-3.23
CENCOSUD SHOPPIN	Chile	CLP	1142	-3.14
CORFICOLOMBIANA	Colombia	COP	29500	-2.54
EMPRESAS COPEC	Chile	CLP	7150	-1.77

Per Volume	Exchange	Volume
ITAU CORPBANCA	Chile	806,056,723
BANCO SANTANDER	Chile	213,610,449
BANCO DE CHILE	Chile	141,136,640
ENEL CHILE SA	Chile	122,077,308
ENEL AMERICAS SA	Chile	113,583,214

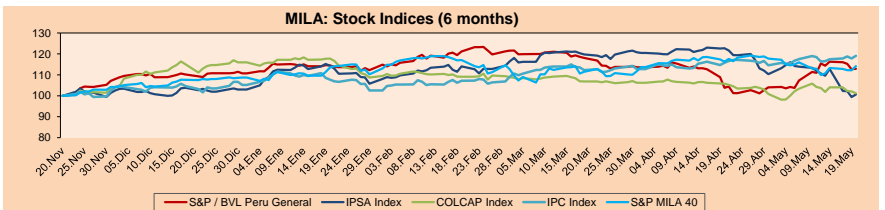
MILA

Peru: The General Index of the BVL ended today's session with a positive result of +0.15%. The index maintains an annual accumulated positive trend of +1.99% in local currency, while the adjusted return in dollars amounts to -0.51%. Then, the S&P / BVL Peru SEL varied by +0.36% while the S&P / BVL LIMA 25 by +0.15%. The PEN spot reached 5 / 3.7089. Headline: Peru received a batch of 395,000 vaccines from Pfizer and the total exceeds three million 241 thousand

Chile: The IPSA index ended the day with a positive return of +1.23%. The sectors that benefited the most from the conference were Communication Services (+ 8.54%) and Industrial (+ 4.26%). The stocks with the best performance were SMU SA (+ 10.68%) and Colbun SA (+ 8.56%). Headline: Chilean Stock Exchange manages to recover some ground after a week marked by the effects of the elections

Colombia: The COLCAP index closed today with a negative return of -0.87%. The most affected sectors of the day were Public Services (-1.88%) and Energy (-1.29%). The worst performing stocks were Empresa de Energía de Bogotá SA (-3.93%) and Cementos Argos SA ESP (-3.31%). Headline: Downgraded S&P depreciates Colombian peso this Thursday

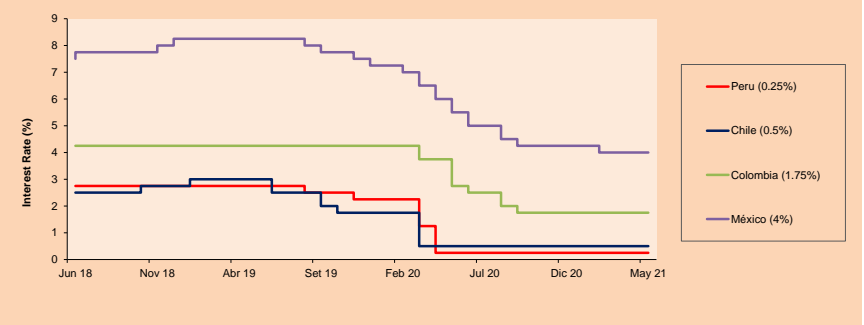
Mexico: The IPC index closed the day with a positive return of +1.06%. The sectors that benefited the most from the conference were Finance (+ 3.25%) and Communication Services (+ 1.59%). The best performing stocks were Grupo Financiero Banorte SAB de CV (+ 5.19%) and Gruma SAB de CV (+ 2.75%). Headline: Analysts slightly improve forecast on Mexican economy: Citibanamex survey



Base: 23/11/20=100
Source: Bloomberg

ETFs	Curr.	Close	1D	5D	30 D	YTD	Exchange
▲ iShares MSCI All Peru Caped Index Fund	USD	33.66	0.45%	-3.88%	2.50%	-2.94%	NYSE Arca
▲ iShares MSCI All Chile Caped Index Fund	USD	28.38	0.07%	-9.50%	-20.10%	-6.06%	Cboe BZX
▼ Global X MSCI Colombia	USD	9.9116	-0.76%	-0.29%	-2.78%	-12.75%	NYSE Arca
▲ iShares MSCI Mexico Capped	USD	48.07	1.52%	3.07%	3.96%	11.82%	NYSE Arca
▲ iShares MSCI Emerging Markets	USD	53.76	0.58%	3.36%	0.09%	4.04%	NYSE Arca
▲ Vanguard FTSE Emerging Markets	USD	52.63	0.36%	3.28%	0.69%	5.03%	NYSE Arca
▲ iShares Core MSCI Emergina Markets	USD	65.17	0.57%	3.17%	0.22%	5.05%	NYSE Arca
▲ iShares JP Morgan Emerging Markets Bonds	USD	63.72	0.68%	2.53%	0.30%	4.32%	Cboe BZX
▲ Morgan Stanley Emerging Markets Domestic	USD	6.13	0.16%	0.82%	-0.16%	-2.54%	New York

MILA: Policy Rate



Source: Bloomberg

Capital Market Laboratory Coordinator: Economist Bruno Bellido
Collaboration: María Camarena, Alonso García, Adrian Paredes and Jairo Valverde
email: pulsobursatil@ulima.edu.pe
facebook: www.facebook.com/pulsobursatil

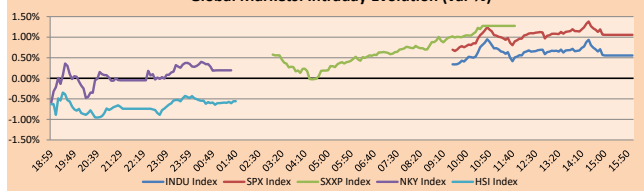
The content of this document is just for informational purposes. The information and opinions expressed should not be considered as recommendations for future decisions. Under any circumstances, the Capital Market Laboratory of University of Lima will be responsible for the use of the statements in this document.

WORLD

Main Indices	Close	1 D*	5 D*	1 M*	YTD*	Market Cap. (US\$ Mill.)
▲ Dow Jones (USA)	34,084.15	0.55%	0.18%	-0.16%	11.36%	10,139,232
▲ Standard & Poor's 500 (EEUU)	4,159.12	1.06%	1.13%	-0.34%	10.73%	36,721,465
▲ NASDAQ Composite (USA)	13,535.74	1.77%	3.13%	-2.97%	5.02%	22,511,743
▲ Stoxx EURO600 (Europe)	441.90	1.27%	1.05%	1.20%	10.74%	9,947,704
▲ DAX (Germany)	15,370.26	1.70%	1.12%	1.15%	12.04%	1,125,278
▲ FTSE 100 (United Kingdom)	7,019.79	1.00%	0.81%	1.81%	8.66%	1,429,241
▲ CAC 40 (France)	6,343.58	1.22%	0.88%	2.14%	14.27%	1,704,736
▲ IBEX 35 (Spain)	9,124.30	0.59%	1.76%	7.10%	13.01%	500,463
▲ MSCI AC Asia Pacific Index	203.79	0.09%	2.95%	-0.75%	1.94%	26,126,876
▼ HANG SENG (Hong Kong)	28,450.29	-0.50%	0.78%	-0.83%	4.23%	4,338,102
▼ SHANGHAI SE Comp. (China)	3,508.94	-0.12%	2.29%	0.52%	0.52%	6,765,789
▲ NIKKEI 225 (Japan)	28,098.25	0.19%	2.37%	-1.00%	2.94%	3,885,719
▲ S&P/ASX 200 (Australia)	7,019.56	1.27%	0.53%	0.26%	6.51%	1,726,798
▲ KOSPI (South Korea)	3,162.28	1.06%	2.21%	-0.59%	9.72%	1,886,633

*Legend: Variation 1D: 1 Day; 5D: 5 Days; 1M: 1 Month; YTD: Var. % 12/31/20 to date

Global Markets: Intraday Evolution (var %)

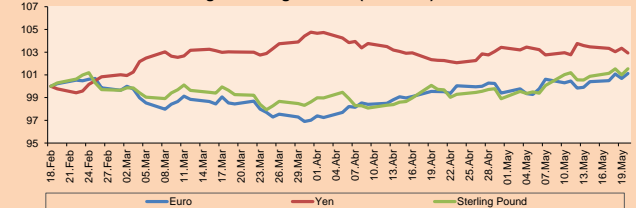


Source: Bloomberg

Currency	Price	1 D*	5 D*	1 M*	YTD*
▲ Euro	1,222.28	0.44%	1.22%	1.60%	0.10%
▼ Yen	108,780.00	-0.40%	-0.63%	0.62%	5.36%
▲ Sterling Pound	1,449.00	0.53%	0.98%	1.82%	3.80%
▼ Yuan	6,434.8	0.00%	-0.27%	-1.00%	-1.42%
▼ Hong Kong Dollar	7,762.5	-0.03%	-0.07%	0.02%	0.12%
▼ Brazilian Real	5,284.6	-0.49%	-0.47%	-5.08%	1.66%
▲ Argentine Peso	94,244.4	0.04%	0.24%	1.37%	12.00%

*Legend: Variation 1D: 1 Day; 5D: 5 Days; 1M: 1 Month; YTD: Var. % 12/31/20 to date

Foreign Exchange Indices (3 months)

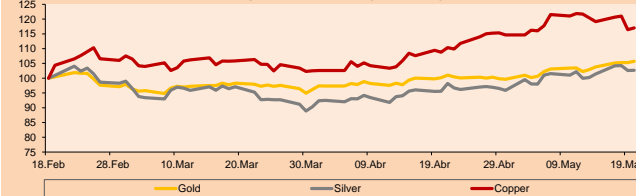


Base: 18/02/21=100
Source: Bloomberg

Commodities	Close	1 D*	5 D*	1 M*	YTD*
▲ Oro (US\$ Oz. T) (LME)	1,877.21	0.41%	2.76%	5.54%	-1.11%
▲ Plata (US\$ Oz. T) (LME)	27.76	0.07%	2.45%	7.41%	5.13%
▲ Cobre (US\$ TM) (LME)	10,031.50	0.52%	-2.86%	7.53%	29.46%
▲ Zinc (US\$ TM) (LME)	2,943.75	0.79%	1.36%	5.38%	7.86%
▼ Petróleo WTI (US\$ Barril) (NYM)	61.94	-2.23%	-2.98%	-1.05%	27.66%
▲ Estiáno (US\$ TM) (LME)	32,850.00	2.00%	5.78%	16.70%	59.30%
▲ Plomo (US\$ TM) (LME)	2,223.50	2.30%	4.35%	10.79%	12.54%
▲ Azúcar #11 (US\$ Libra) (NYB-ICE)	17.04	0.53%	-0.41%	1.91%	20.09%
▼ Cacao (US\$ TM) (NYB-ICE)	2,444.00	-1.01%	-2.32%	1.03%	-2.67%
- Café Arábica (US\$ TM) (NYB-ICE)	150.95	0.00%	3.11%	12.27%	14.49%

*Legend: Variación 1D: 1 Día; 5D: 5 Días; 1M: 1 Mes; YTD: Var. % 31/12/20 a la fecha

Principal Metals Index (3 months)



Base: 18/02/21=100
Source: Bloomberg

Equity

Germany (Stocks from DAX Index)				Exchange			
Largest gains	Curr.	Price	▲ %	Largest losses	Curr.	Price	▼ %
DAI GY	EUR	75.14	3.70	DB1 GY	EUR	55.72	0.09
DHER GY	EUR	105.65	3.43	MTX GY	EUR	138.35	0.18
IFX GY	EUR	31.91	3.40	ENR GY	EUR	205.7	0.49
ENR GY	EUR	25.53	3.15	ALV GY	EUR	214.95	0.56

Europe (Stocks from STOXX EUROPE 600)				Exchange			
Largest gains	Curr.	Price	▲ %	Largest losses	Curr.	Price	▼ %
KINVB SS	SEK	292.8	8.42	SAMPO FH	EUR	39.29	-4.47
NENTB SS	SEK	390	7.14	UN01 GY	EUR	29.26	-3.62
DOM SS	SEK	137.4	6.39	EOAN GY	EUR	10.154	-3.15
EVO SS	SEK	1437.2	5.99	TUI LN	Gbp	427.4	-2.91

Global Overview:

United States:

Major US indices ended today's session with positive returns, driven by gains in tech stocks and slight job growth. The sectors that grew the most were Information Technology + 1.87% and Communication Services + 1.67%, for the S&P 500 and for the Dow, they were the same sectors but with growth of + 1.12% and 0.87%, respectively. On the other hand, bitcoin recovered, trading close to \$ 40,000, despite what happened with Tesla and the People's Bank of China banning financial institutions from offering services related to cryptocurrency transactions. On the other hand, the president of the SEC, Gary Gensler, said that he would like to see more regulation in relation to the exchange of cryptocurrencies, hinting that greater protection is needed for investors. In relation to stocks, technology companies rebounded in the US market, standing out among them: Apple, Microsoft, Amazon, Facebook, Alphabet and Tesla. Also, high-volume trading companies like Ford Motor, AT&T, Cisco and AMD finished with positive returns earlier today. To sum it up, DOW JONES +0.56%, Nasdaq + 1.77 % and S&P 500 + 1.06% closed the day higher.

Europe:

European markets closed the day with gains following a buying euphoria in the chip sector. On the data front, Eurozone consumer prices rose to 1.6% in April, still below the 2% forecast by the European Central Bank (ECB). In this regard, ECB Governor Christine Lagarde highlighted the improvement of the COVID outlook in Europe and insisted that monetary support should still be maintained. Thus, the main European index closed higher driven by the technology +1.12% and personal care +1.00% sectors. In individual stocks, Banco Santander ended the day with gains +0.77% following the positive acceptance of its foray into the payments market with PagoNxt which seeks to compete with Apple Pay and Stripe in Europe. In Germany, the producer price index posted its biggest increase in a decade; a further sign that a lack of supply is leading to increased inflationary pressure, according to Reuters. Thus, FTSE 100 +1.00%; STOXX 600 +1.27%; DAX +1.58%; CAC 40 closed the day with gains.

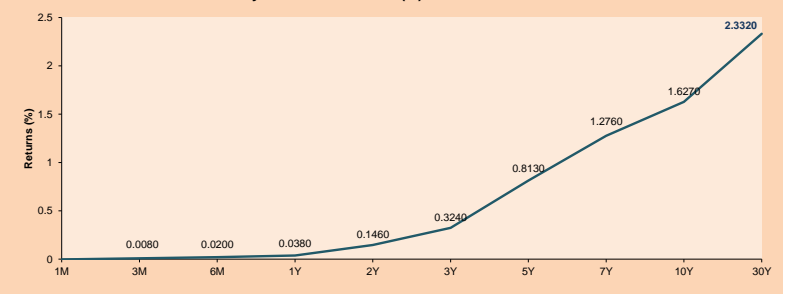
Asia:

Major Asian indices closed mixed, with interesting macroeconomic results. In China, yields were mixed after the Chinese benchmark rate remained unchanged during May, with the one-year prime lending rate at 3.85%. The five-year interest rate held steady at 4.65%. Both data were in line with most investors' expectations, according to a Reuters poll. In Japan, the NIKKEI closed higher as, according to data from the country's Ministry of Finance, Japan's exports rose 38% in April compared to a year earlier. This result was higher than expected by investors, who were expecting an increase of 30.9%. In South Korea, stocks fell due to the minutes released by the FED overnight. In turn, the drop in cryptocurrencies affected the Korean market's confidence. In India, stocks remained lower after gains in some financial stocks were overshadowed by the massive sell-off in the metal stocks. Thus, NIKKEI +0.19%; CSI 300 +0.27%; S&P/ASX +1.27% closed positive, while NIFTY 50 -0.83%, Shanghai Composite -0.11% and KOSPI -0.34% ended negative.

ETFs

ETFs	Curr.	Close	1D	5D	30 D	YTD	Exchange
SPDR S&P 500 ETF TRUST	USD	415.28	1.09%	1.22%	0.75%	11.07%	NYSE Arca
ISHARES MSCI EMERGING MARKET	USD	53.76	0.58%	3.36%	0.09%	4.04%	NYSE Arca
ISHARES IBOXX HIGH YLD CORP	USD	86.98	0.43%	0.06%	-0.03%	-0.37%	NYSE Arca
FINANCIAL SELECT SECTOR SPDR	USD	37.21	0.05%	-0.21%	7.42%	26.22%	NYSE Arca
VANECK GOLD MINERS	USD	39.51	1.20%	6.99%	9.14%	9.69%	NYSE Arca
ISHARES RUSSELL 2000 ETF	USD	219.40	0.67%	1.69%	1.02%	11.90%	NYSE Arca
SPDR GOLD SHARES	USD	175.96	0.46%	2.82%	5.69%	-1.35%	NYSE Arca
ISHARES 20+ YEAR TREASURY BO	USD	137.23	0.82%	1.05%	-1.63%	-13.00%	NASDAQ GM
INVESCO QQQ TRUST SERIES 1	USD	328.83	1.93%	2.97%	-2.25%	4.81%	NASDAQ GM
ISHARES NASDAQ BIOTECHNOLOGY	USD	152.18	2.03%	4.14%	0.40%	0.46%	NASDAQ GM
ENERGY SELECT SECTOR SPDR	USD	52.05	-0.15%	0.33%	10.58%	37.34%	NYSE Arca
PROSHARES ULTRA VIX ST FUTUR	USD	4.49	-8.10%	-13.32%	-7.99%	-57.84%	Close BZX
UNITED STATES OIL FUND LP	USD	42.48	-2.19%	-3.04%	-0.61%	-28.69%	NYSE Arca
ISHARES MSCI BRAZIL ETF	USD	37.69	0.51%	1.92%	7.62%	1.67%	NYSE Arca
SPDR S&P OIL & GAS EXP & PR	USD	86.08	-0.44%	5.50%	16.32%	47.15%	NYSE Arca
UTILITIES SELECT SECTOR SPDR	USD	65.82	0.87%	0.35%	-2.81%	4.98%	NYSE Arca
ISHARES US REAL ESTATE ETF	USD	98.48	1.23%	2.31%	0.94%	14.98%	NYSE Arca
SPDR S&P BIOTECH ETF	USD	127.57	2.10%	4.16%	-0.56%	-9.38%	NYSE Arca
ISHARES IBOXX INVESTMENT GRA	USD	131.13	0.68%	0.61%	0.11%	-5.07%	NYSE Arca
ISHARES JP MORGAN US EMERGI	USD	111.41	0.70%	0.69%	0.50%	-5.88%	NASDAQ GM
REAL ESTATE SELECT SECT SPDR	USD	42.41	1.24%	2.05%	1.00%	16.00%	NYSE Arca
ISHARES CHINA LARGE-CAP ETF	USD	45.58	1.00%	4.68%	-2.54%	-1.83%	NYSE Arca
CONSUMER STAPLES SPDR	USD	71.01	0.92%	0.58%	1.56%	5.28%	NYSE Arca
VANECK JR GOLD MINERS	USD	54.01	1.71%	9.16%	8.21%	-0.42%	NYSE Arca
SPDR RBB BARO HIGH YIELD BND	USD	108.58	0.40%	0.08%	-0.11%	-0.33%	NYSE Arca
VANGUARD REAL ESTATE ETF	USD	97.98	1.12%	2.13%	0.91%	15.37%	NYSE Arca
GRAYSCALE BITCOIN TRUST BTC	USD	33.05	1.38%	-11.11%	-29.70%	3.28%	OTC US

USA Treasury Bonds Yield Curve (%)



Source: Bloomberg

Capital Market Laboratory Coordinator: Economist Bruno Bellido
Collaboration: Maria Camarena, Alonso García, Adrian Paredes and Jairo Valverde
email: pulsohorsatil@ulima.edu.pe
facebook: www.facebook.com/pulsohorsatil

LIMA

Stocks

Ticker	Currency	Price	1D*	5D*	30D*	YTD*	Frequency	Volume (US\$)	Beta	Dividend Yield (%)	Price Earning	Market Cap. (M US\$)	Economic Sector*	Index Weight
▼ ALICORC1 PE**	S/.	6.98	-0.82%	-0.98%	-3.81%	-7.91%	100.00%	2,173,181	0.72	3.58	13.17	1,605.34	Industrial	3.53%
▼ ATACOCB1 PE**	S/.	0.14	0.00%	-1.43%	-8.00%	0.00%	70.00%	106	1.15	0.00	-	35.15	Mining	1.02%
▼ BACKUS1 PE**	S/.	19.00	-2.56%	-5.52%	-5.00%	-5.71%	100.00%	23,345	0.68	1.85	14.21	7,219.36	Industrial	0.82%
▼ BAP PE**	US\$	138.11	-0.88%	-2.74%	8.89%	-14.00%	100.00%	3,020,626	1.23	6.37	-	13,035.14	Diverse	5.82%
▲ BVN PE**	US\$	11.49	1.14%	4.26%	11.55%	-4.25%	100.00%	97,261	1.17	0.00	-	3,161.61	Mining	5.88%
▼ CASAGRC1 PE**	S/.	5.80	-1.69%	-4.92%	3.57%	22.11%	90.00%	43,330	0.84	3.90	5.50	131.73	Agricultural	1.31%
▼ BBVAC1 PE**	S/.	2.15	-0.92%	-3.59%	4.88%	-0.92%	85.00%	135,505	0.88	2.10	30.70	3,784.87	Finance	2.85%
- CORAREH1 PE**	S/.	1.14	0.00%	-8.06%	25.27%	28.09%	100.00%	127,407	1.05	8.47	3.65	401.44	Industrial	1.72%
- CPACASC1 PE**	S/.	5.61	0.00%	-3.44%	6.86%	5.85%	100.00%	149,396	0.64	4.10	40.07	693.26	Industrial	2.38%
▲ CVERDEC1 PE**	US\$	21.55	0.23%	-13.45%	7.75%	3.01%	100.00%	286,247	1.29	2.65	12.34	7,543.71	Mining	5.25%
▲ ENGEPEC1 PE**	S/.	2.25	-0.44%	-5.46%	5.63%	12.50%	95.00%	5,035	0.70	8.78	13.75	1,722.13	Public Services	1.44%
- ENDISPC1**	S/.	4.95	0.00%	-4.81%	-6.60%	-8.33%	75.00%	5,637	0.76	0.00	11.14	852.24	Public Services	0.98%
▲ FERREYV1 PE**	S/.	1.93	1.58%	-2.53%	6.04%	10.92%	100.00%	316,056	0.82	9.44	12.84	507.72	Diverse	4.90%
▲ AENZAC1 PE**	S/.	1.14	-5.00%	-11.63%	-18.57%	-34.48%	100.00%	65,949	0.72	0.00	-	268.00	Diverse	4.05%
▲ IFS PE**	US\$	28.80	2.67%	-2.96%	7.50%	-6.92%	95.00%	508,395	1.15	2.67	16.25	3,324.89	Diverse	7.22%
▲ INRETC1 PE**	US\$	40.50	-1.20%	-0.02%	12.19%	3.32%	100.00%	319,580	0.80	1.68	83.04	4,163.70	Diverse	5.28%
- LUSURC1 PE**	S/.	11.90	0.00%	-8.46%	-0.83%	-53.33%	70.00%	8,690	0.97	0.00	11.98	1,562.38	Public Services	1.81%
▼ MINSUR1 PE**	S/.	3.09	-0.96%	-4.63%	28.75%	67.03%	100.00%	1,729,301	0.96	0.00	81.51	2,401.92	Mining	3.09%
▼ PML PE**	US\$	0.13	0.00%	-5.19%	-3.03%	20.75%	75.00%	22,760	1.42	0.00	-	33.82	Mining	2.12%
- RELAPAC1 PE**	S/.	0.12	0.00%	0.00%	17.65%	73.91%	95.00%	43,931	0.97	0.00	3.26	269.16	Industrial	2.12%
▲ SCCO PE**	US\$	71.20	0.64%	-7.77%	-0.07%	8.04%	100.00%	135,320	1.13	3.09	24.74	55,042.82	Mining	2.14%
- SIDERC1 PE**	S/.	1.02	0.00%	-9.73%	18.60%	20.00%	100.00%	11,194	0.96	22.01	8.17	244.19	Industrial	1.43%
▲ TV PE**	US\$	0.21	0.95%	4.95%	48.25%	44.22%	100.00%	18,415	1.35	0.00	-	209.69	Mining	2.93%
▲ UNACEMC1 PE**	S/.	1.57	0.64%	-1.88%	12.14%	1.29%	95.00%	120,581	0.95	1.66	34.39	769.62	Industrial	3.00%
▲ VOLGABC1 PE**	S/.	0.74	1.37%	-3.90%	7.25%	42.31%	100.00%	356,691	1.39	0.00	-	813.36	Mining	5.90%
▲ NEXAPEC1 PE**	S/.	3.45	1.47%	-5.48%	15.00%	21.91%	65.00%	237,491	1.15	0.00	-	1,228.71	Mining	1.56%

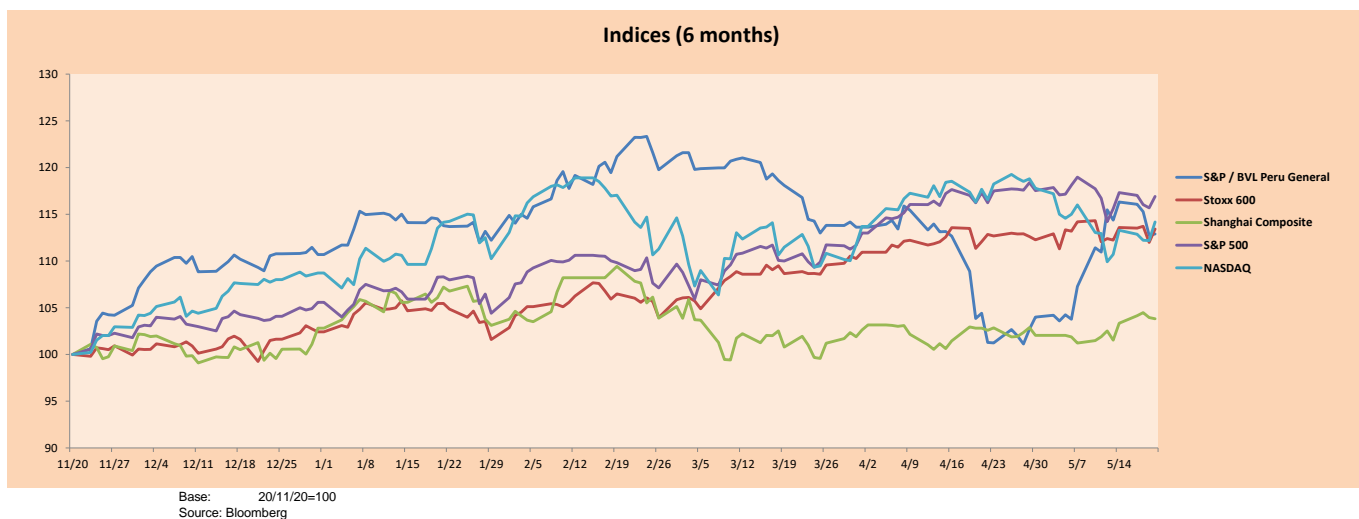
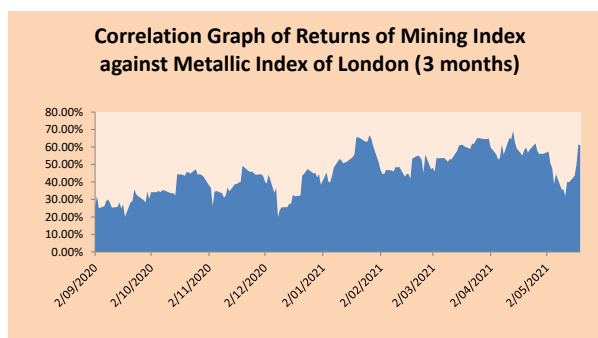
Quantity of shares: 26
 Source: Bloomberg, Económica
 * Bloomberg Industry Classification System
 ** PER is used in the stock market and original currency of the instrument
 *Legend: Variation 1D: 1 Day; 5D: 5 Days, 1M: 1 Month; YTD: Var.% 12/31/20 to date

Sectorial Indices

	Close	1D*	5D*	30D*	YTD*	Beta
▲ S&P/BVLMining	439.57	0.74%	-2.78%	7.07%	12.72%	1.17
▼ S&P/BVLConsumer	1,133.89	-0.53%	-2.58%	7.19%	4.16%	0.59
▼ S&P/BVLIndustrials	195.85	0.00%	-3.09%	4.84%	2.78%	0.62
▼ S&P/BVLFinancials	934.78	-0.50%	-0.57%	10.26%	-9.59%	1.21
▼ S&P/BVLConstruction	202.19	-0.69%	-3.40%	4.09%	-3.31%	0.62
▼ S&P/BVLPublicSvcs	585.65	-0.15%	-2.72%	-2.02%	-4.63%	0.43
▼ S&P/BVLElectricUtil	571.74	-0.15%	-2.72%	-2.02%	-4.63%	0.43

S&P/BVLConstructionTRPEN

*Legend: Variation 1D: 1 Day; 5D: 5 Days, 1M: 1 Month; YTD: Var.% 12/31/20 to date



Capital Market Laboratory Coordinator: Economist Bruno Bellido
 Collaboration: María Camarena, Alonso García, Adrian Paredes and Jairo Valverde
 email: pulsobursatil@ulima.edu.pe
 facebook: www.facebook.com/pulsobursatil

The content of this document is just for informational purposes. The information and opinions expressed should not be considered as recommendations for future decisions. Under any circumstances, the Capital Market Laboratory of University of Lima will be responsible for the use of the statements in this document.

SOVEREIGN RATING

RISK RATINGS

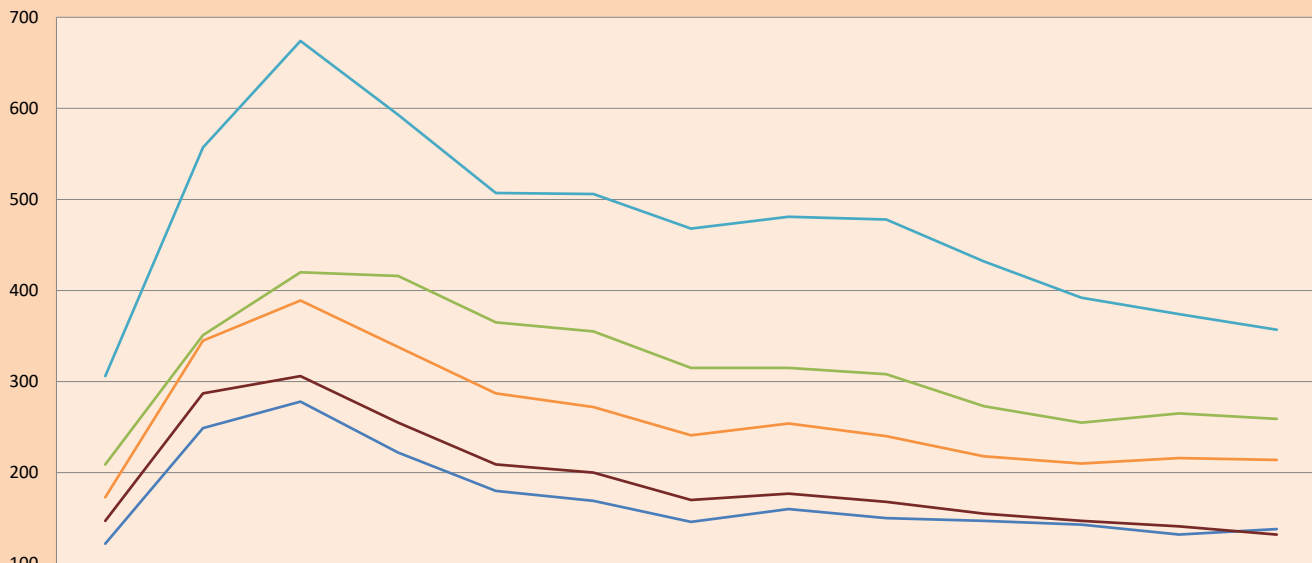
Moody's	S&P	Fitch		
Aaa	AAA	AAA	Prime	
Aa1	AA+	AA+	High credit quality	
Aa2	AA	AA		
Aa3	AA-	AA-		
A1	A+	A+	Medium-high grade, with low credit risk	
A2	A	A		
A3	A-	A-		
Baa1	BBB+	BBB+	Moderate Credit Risk	
Baa2	BBB	BBB		
Baa3	BBB-	BBB-		
Ba1	BB+	BB+	It has speculative elements and it is subject to substantial credit risk	
Ba2	BB	BB		
Ba3	BB-	BB-		
B1	B+	B+	It is considered speculative and it has high credit risk	
B2	B	B		
B3	B-	B-		
Caa1	CCC+	CCC	Bad credit conditions and it is subject to high credit risk	
Caa2	CCC			
Caa3	CCC-			
Ca	C	DDD	Very close to default or in default	
C	D			DD
				D

Source: Bloomberg

Latin America Credit Rating			
Clasificadora de riesgo			
Country	Moody's	Fitch	S&P
Peru	A3	BBB+	BBB+
México	Ba2	BB-	BB-
Venezuela	C	WD	SD
Brazil	Ba2	BB-	BB-
Colombia	Baa2	BBB-	BB+
Chile	A1	A-	A
Argentine	Ca	WD	CCC+
Panama	Baa2	BBB-	BBB

Source: Bloomberg

LATAM Country Risk (bps)



	Feb-20	Mar-20	Abr-20	May-20	Jun-20	Jul-20	Ago-20	Set-20	Oct-20	Nov-20	Dic-20	Ene-21	Feb-21
Perú	122	249	278	222	180	169	146	160	150	147	143	132	138
Brasil	209	351	420	416	365	355	315	315	308	273	255	265	259
México	306	557	674	593	507	506	468	481	478	432	392	374	357
Colombia	173	345	389	338	287	272	241	254	240	218	210	216	214
Chile	147	287	306	255	209	200	170	177	168	155	147	141	132

Source: BCRP

Capital Market Laboratory Coordinator: Economist Bruno Bellido
Collaboration: María Camarena, Alonso García, Nicolás Muñoz, Adrián Paredes y Jairo Valverde
email: pulsobursatil@ulima.edu.pe
facebook: www.facebook.com/pulsobursatil.ul