

PULSO BURSÁTIL

FACULTAD DE CIENCIAS EMPRESARIALES Y ECONÓMICAS
CARRERA DE ECONOMÍA
LABORATORIO DE MERCADO DE CAPITALES

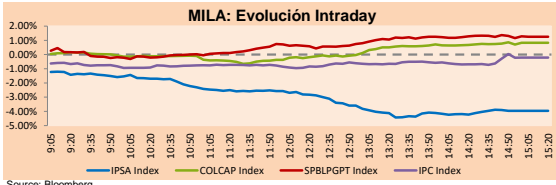


MILA

Lima, June 3, 2021

Main Indexes	Close	1 D	5 D	1 M	YTD	Cap. Burs. (US\$ bill)
▼ IPSA (Chile)	4,226.90	-3.80%	1.60%	-9.08%	1.19%	119.77
▼ IGPA (Chile)	21,310.67	-3.66%	1.68%	-9.13%	1.44%	143.52
▲ COLSC (Colombia)	984.78	0.50%	1.36%	3.69%	-7.01%	4.62
▲ COLCAP (Colombia)	1,258.26	0.82%	6.44%	3.33%	-12.49%	76.20
▲ S&P/BVL (Perú)*	21,382.67	1.25%	7.22%	9.74%	2.69%	100.68
▲ S&P/BVL SEL (Perú)	561.84	0.84%	7.37%	7.70%	1.89%	90.83
▲ S&P/BVL LIMA 25	27,168.86	1.38%	8.01%	5.33%	7.82%	99.87
▼ IPC (México)	50,628.77	-0.24%	2.02%	4.76%	14.89%	307.68
▼ S&P MILA 40	500.96	-1.81%	4.69%	-1.64%	-6.30%	6,203.75

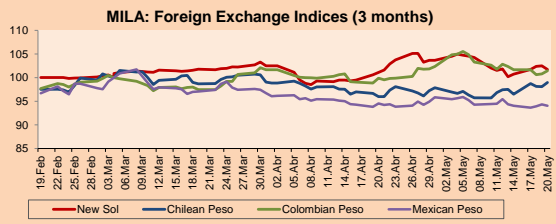
*Legend: Variation 1D: 1 day; 5D: 5 days; 1M: 1 Month; YTD: Var% 12/31/20 to date



Source: Bloomberg

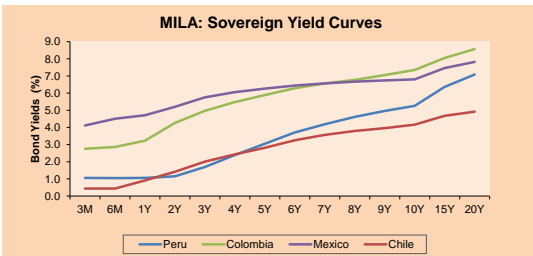
Currency	Price	1D*	5D*	30 D*	YTD*
▲ Sol (PEN)	3,8713	1.27%	0.61%	0.98%	7.00%
▲ Chilean Peso (CLP)	719.95	0.45%	-1.21%	2.59%	1.15%
▼ Colombian Peso (COP)	3,646.58	-0.09%	-2.22%	-4.66%	6.32%
▲ Mexican Peso (MXN)	20.16	1.33%	0.98%	-0.20%	1.25%

*Legend: Variation 1D: 1 day; 5D: 5 days; 1M: 1 Month; YTD: Var% 12/31/20 to date



Base: 04/03/21=100
Source: Bloomberg

Fixed Income	Currency	Price	Bid Yield (%)	Ask Yield (%)	Duration
PERU 7.35 07/21/25	USD	123.012	1.63	1.50	3.60
PERU 4.125 08/25/27	USD	111.389	2.20	2.11	5.55
PERU 8.75 11/21/33	USD	155.314	3.33	3.26	8.78
PERU 6.55 03/14/37	USD	135.354	3.63	3.56	10.37
PERU 5.625 11/18/2050	USD	131.46	3.85	3.81	16.47
CHILE 2.25 10/30/22	USD	102.528	0.58	0.29	1.38
CHILE 3.125 01/21/26	USD	108.395	1.30	1.20	4.32
CHILE 3.625 10/30/42	USD	104.11	3.38	3.33	15.39
COLOM 11.85 03/09/28	USD	159.434	2.45	2.15	5.17
COLOM 10.375 01/28/33	USD	148.861	4.94	4.73	7.63
COLOM 7.375 09/18/37	USD	129.81	4.76	4.70	10.39
COLOM 6.125 01/18/41	USD	116.302	4.86	4.80	12.02
MEX 4 10/02/23	USD	116.302	4.861	4.798	12.02
MEX5.55 01/45	USD	118.878	4.29	4.25	14.08



Source: Bloomberg

Equity

Largest gains	Exchange	Currency	Price	▲%
VOLCAN CIA MIN-B	Peru	PEN	0.68	4.62
BANCOLOMBIA-PREF	Colombia	COP	28810.00	2.31
BANCO DAVIVIENDA	Colombia	COP	29990.00	2.11
BUENAVENTURA-ADR	Peru	USD	11.71	1.56
GRUMA SAB-B	Mexico	MXN	221.17	1.50

Per Turnover	Exchange	Amount (US\$)
AERO DEL SURES-B	Mexico	43,419,319
GRUPO MEXICO-B	Mexico	41,261,532
GRUPO F BANORT-O	Mexico	38,999,921
AMERICA MOVIL-L	Mexico	37,083,645
WALMART DE MEXIC	Mexico	27,994,128

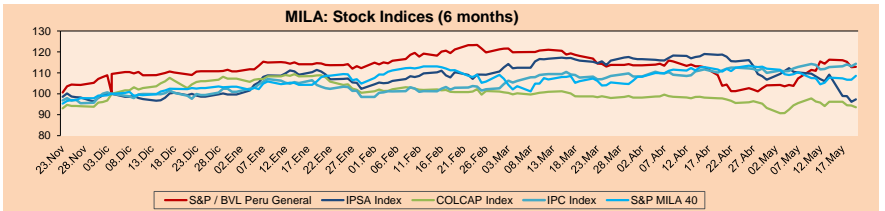
MILA

Peru: The General Index of the BVL ended today's session with a positive result of +1.25%. The index maintains an annual accumulated positive trend of +2.69% in local currency, while the adjusted return in dollars amounts to -4.03%. Then, the S&P / BVL Peru SEL varied by +0.84% while the S&P / BVL LIMA 25 by +1.38%. The PEN spot reached 5 / 3.8713. Headline: Peru's country risk fell two basis points and closed at 1.40 percentage points

Chile: The IPSA index ended the day with a negative return of -3.80%. The most affected sectors of the day were Non-Basic Consumer Products (-5.72%) and Finance (-2.83%). The worst performing stocks were Aguas Andinas SA (-7.22%) and Falabella SA (-6.21%). Headline: Chilean Stock Exchange falls almost 4% before new projects that seek the withdrawal of 100% of the APF

Colombia: The COLCAP index closed today with a positive return of +0.50%. The sectors that benefited the most from the session were Finance (+0.14%) and Public Services (+0.07%). The stocks with the best performance were Bancolombia SA-PREF (+2.31%) and Banco Davivienda SA (+2.11%). Headline: Bancolombia projects annual inflation variation of 3% in May

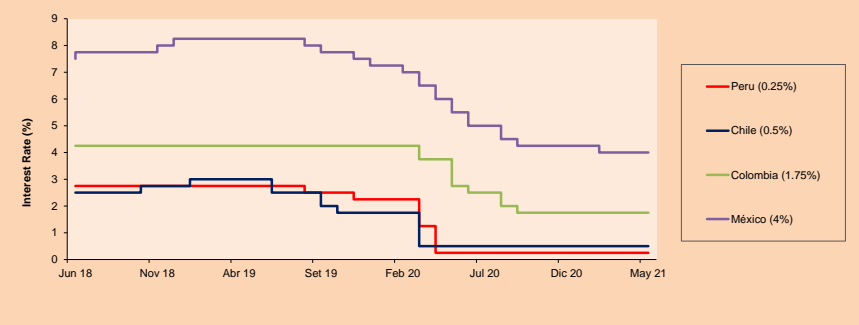
Mexico: The IPC index closed the day with a negative return of -0.24%. The most affected sectors of the day were Real Estate (-1.31%) and Industrial (-1.29%). The worst performing stocks were Qualitas Controladora SAB de CV (-3.20%) and Grupo Carso SAB de CV-SER A1 (-3.11%). Headline: Mexico falls 3 positions in the World Competitiveness ranking



Base: 23/11/20=100
Source: Bloomberg

ETFs	Curr.	Close	1D	5D	30 D	YTD	Exchange
▼ iShares MSCI All Peru Caped Index Fund	USD	33.23	-0.66%	4.96%	4.79%	-4.18%	NYSE Arca
▼ iShares MSCI All Chile Caped Index Fund	USD	29.12	-3.74%	2.75%	-12.24%	-3.61%	Cboe BZX
▲ Global X MSCI Colombia	USD	10.18	0.19%	4.30%	9.01%	-10.39%	NYSE Arca
▼ iShares MSCI Mexico Capped	USD	48.08	-1.39%	0.86%	4.91%	11.84%	NYSE Arca
▼ iShares MSCI Emerging Markets	USD	55.49	-1.07%	1.78%	3.97%	7.39%	NYSE Arca
▼ Vanguard FTSE Emerging Markets	USD	54.52	-1.12%	1.72%	4.22%	8.80%	NYSE Arca
▼ iShares Core MSCI Emergina Markets	USD	67.38	-1.12%	1.72%	4.09%	8.61%	NYSE Arca
▼ iShares JP Morgan Emerging Markets Bonds	USD	64.97	-0.58%	0.74%	3.32%	6.37%	Cboe BZX
▼ Morgan Stanley Emerging Markets Domestic	USD	6.25	-0.46%	-0.16%	3.48%	-0.64%	New York

MILA: Policy Rate



Source: Bloomberg

Capital Market Laboratory Coordinator: Economist Bruno Bellido
Collaboration: María Camarena, Alonso García, Adrian Paredes and Jairo Valverde
email: pulsobursatil@ulima.edu.pe
facebook: www.facebook.com/pulsobursatil

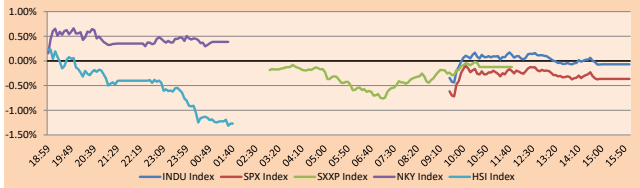
The content of this document is just for informational purposes. The information and opinions expressed should not be considered as recommendations for future decisions. Under any circumstances, the Capital Market Laboratory of University of Lima will be responsible for the use of the statements in this document.

WORLD

Main Indices	Close	1 D*	5 D*	1 M*	YTD*	Market Cap. (US\$ Mill.)
▼ Dow Jones (USA)	34,577.04	-0.07%	0.74%	1.30%	12.97%	10,114,075
▼ Standard & Poor's 500 (EEUU)	4,192.85	-0.36%	-0.07%	0.68%	11.63%	37,031,425
▼ NASDAQ Composite (USA)	13,614.51	-1.03%	-0.90%	-0.14%	5.63%	22,706,618
▼ Stoxx EURO600 600 (Europe)	450.79	-0.12%	0.97%	3.95%	12.97%	10,231,829
▲ DAX (Germany)	15,632.67	0.19%	1.47%	5.22%	13.95%	1,156,214
▼ FTSE 100 (United Kingdom)	7,964.35	-0.81%	0.53%	2.04%	9.35%	1,446,452
▼ CAC 40 (France)	6,507.92	-0.21%	1.12%	4.10%	17.23%	1,770,950
▼ IBEX 35 (Spain)	9,142.40	-0.42%	-0.48%	3.53%	13.24%	505,675
▼ MSCI AC Asia Pacific Index	209.88	-0.19%	1.60%	2.23%	4.98%	27,302,796
▼ HANG SENG (Hong Kong)	28,966.03	-1.13%	-0.51%	1.02%	5.94%	4,445,499
▼ SHANGHAI SE Comp. (China)	3,584.21	-0.36%	-0.68%	3.75%	2.98%	6,953,014
▲ NIKKEI 225 (Japan)	29,058.11	0.39%	1.76%	0.27%	5.27%	3,984,394
▲ S&P / ASX 200 (Australia)	7,260.15	0.59%	2.33%	2.86%	10.37%	1,761,721
▲ KOSPI (South Korea)	3,247.43	-0.24%	2.02%	2.55%	12.37%	1,952,428

*Legend: Variation 1D: 1 Day; 5D: 5 Days; 1M: 1 Month; YTD: Var. % 12/31/20 to date

Global Markets: Intraday Evolution (var %)

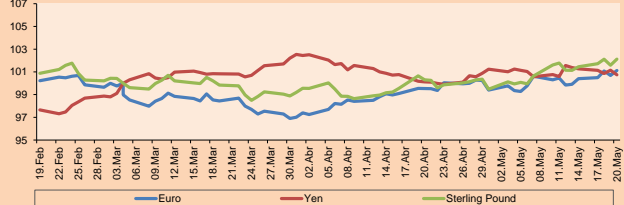


Source: Bloomberg

Currency	Price	1 D*	5 D*	1 M*	YTD*
▼ Euro	1,2127	-0.69%	-0.56%	0.94%	-0.73%
▲ Yen	110,2900	0.67%	0.44%	0.89%	6.32%
▼ Sterling Pound	1,4106	-0.46%	-0.71%	1.58%	3.19%
▲ Yuan	6,4038	0.36%	0.32%	-1.10%	-1.89%
▼ Hong Kong Dollar	7,7582	-0.01%	-0.03%	-0.13%	0.07%
- Brazilian Real	5,0764	0.00%	-3.11%	-6.74%	-2.35%
▲ Argentine Peso	94,8159	0.04%	0.30%	1.17%	12.68%

*Legend: Variation 1D: 1 Day; 5D: 5 Days; 1M: 1 Month; YTD: Var. % 12/31/20 to date

Foreign Exchange Indices (3 months)

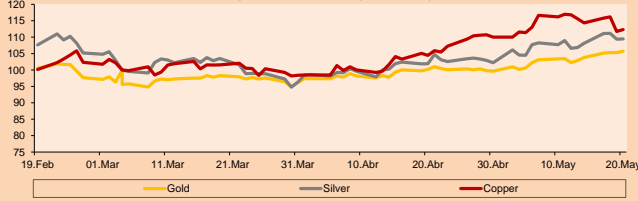


Base: 04/03/21=100
Source: Bloomberg

Commodities	Close	1 D*	5 D*	1 M*	YTD*
▼ Oro (US\$ Oz. T) (LME)	1,870.76	-1.97%	-1.36%	5.15%	-1.45%
▼ Plata (US\$ Oz. T) (LME)	27.43	-2.63%	-1.48%	3.48%	3.90%
▼ Cobre (US\$ TM) (LME)	9,769.75	-3.56%	-4.27%	-1.98%	26.08%
▼ Zinc (US\$ TM) (LME)	2,963.25	-3.19%	-2.65%	0.39%	8.57%
▼ Petróleo WTI (US\$ Barril) (NYM)	68.81	-0.03%	2.93%	4.88%	41.82%
▼ Estano (US\$ TM) (LME)	31,796.00	-3.46%	0.19%	-0.14%	54.77%
▼ Plomo (US\$ TM) (LME)	2,189.25	-2.04%	-0.88%	0.25%	10.81%
▼ Azúcar #11 (US\$ Libra) (NYB-ICE)	17.43	-1.41%	1.81%	1.81%	22.83%
▼ Café (US\$ TM) (NYB-ICE)	2,455.00	-0.45%	-0.53%	3.84%	-2.04%
▼ Café Arábica (US\$ TM) (NYB-ICE)	157.60	-2.20%	1.45%	12.29%	19.53%

*Legend: Variación 1D: 1 Día; 5D: 5 Días; 1M: 1 Mes; YTD: Var. % 31/12/20 a la fecha

Principal Metals Index (3 months)



Base: 04/03/21=100
Source: Bloomberg

Equity

Germany (Stocks from DAX Index)

Largest gains	Curr.	Price	▲ %	Exchange	Largest losses	Curr.	Price	▼ %	Exchange
FME GY	EUR	66.94	1.79	Xetra	MTX GY	EUR	210.6	-1.31	Xetra
FRE GY	EUR	44.665	1.67	Xetra	VNA GY	EUR	52.3	-0.95	Xetra
DAI GY	EUR	79.95	1.55	Xetra	SAP GY	EUR	113.5	-0.54	Xetra
CON GY	EUR	128.92	1.50	Xetra	SIE GY	EUR	135.76	-0.45	Xetra

Europe (Stocks from STOXX EUROPE 600)

Largest gains	Curr.	Price	▲ %	Exchange	Largest losses	Curr.	Price	▼ %	Exchange
SGO FP	EUR	57.7	4.19	EN Paris	TRN LN	GBP	277.4	-5.13	Londres
BMW GY	EUR	93.87	3.95	Xetra	EZJ LN	GBP	959.2	-5.08	Londres
HFG GY	EUR	77.92	2.88	Xetra	SMW LN	GBP	1716	-4.72	Londres
KSP ID	EUR	79.76	2.55	EN Dublin	RYA ID	EUR	16.365	-4.58	EN Dublin

Global Overview:

United States:

The main US indexes closed the session today with negative results, due to strong US data indicating economic recovery and rising inflation. Also, several analysts said that movements in the stock market have slowed, as there are concerns about the high valuations of certain stocks after the rebound in the US market. Furthermore, the success of weekly unemployment reports has been better than expected and point to a strengthening of labor market conditions, which could force the Fed to cut support earlier than expected. On the other hand, inflationary concern persists for investors, although it has been driven by the economic reopening. Oliver Jones, a senior analyst at Capital Economics, said it was not possible to know when central banks would adjust their rates to avoid inflation. Finally, the consumer staples and technology sectors negatively affected the main stock indexes, despite the rise in the main auto stocks. Being, the one with the highest profit at present Ford Motor Co + 7.24% and the most affected Tesla Inc -5.33%. In summary, DOW JONES -0.07%, Nasdaq -1.03% and S&P 500 0.36% finished lower.

Europe:

Major European indexes ended the session mostly lower due to investor uncertainty over U.S. and European economic data. On the other hand, the composite PMI index rose to 57.1 in May compared to 53.8 in April. Thus, the pan-European STOXX 600 index closed with slight losses dragged down by the basic resources sectors -1.91%. In individual shares Saint-Gobain rose 4.1% after the French building materials group said it expected record operating income for the first half of the year, according to Reuters. The London stock market ended the day with negative returns due to losses in the mining sector. However, the national vaccination program continues to make progress; so far more than 75.2% of the population has been immunized. Finally, the German DAX index reached a new all-time high after the services sector growth reading matched the estimate. Thus, FTSE 100 -0.61%; DAX +0.19%; CAC 40 -0.21%; IBEX 35 -0.42%; STOXX 600 -0.12% closed mostly lower.

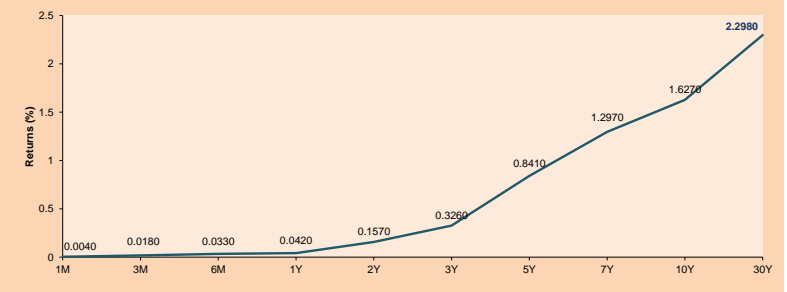
Asia:

The main Asian indexes ended the day with mixed performances, as while the rest of Asian stocks posted gains, China posted losses. In Hong Kong and China, the country's indexes closed lower as the rebound in consumer businesses faltered after a private survey showed that growth in services activity slowed in May. The Caixin/Markit services purchasing managers' index for May came in at 55.1, down from a reading of 56.3 in April. Meanwhile, the rest of the mainland posted gains. In Japan, stocks finished higher, with the TOPIX index reaching new highs. Japanese stocks rose as the country's vaccination campaign raised hopes for a quick recovery. In South Korea, stocks closed near an all-time high, boosted by earnings from large companies and strong foreign buying. In Australia, stocks also closed higher after retail sales rose 1.1% in April, according to data released by the country's Bureau of Statistics. Thus, NIKKEI 225 +0.39%; HANG SENG -1.13%; SHANGHAI COMPOSITE -0.36%; S&P/ASX 200 +0.59%; KOSPI +0.72% closed the session mixed.

ETFs

	Curr.	Close	1D	5D	30 D	YTD	Exchange
SPDR S&P 500 ETF TRUST	USD	418.77	-0.37%	-0.12%	0.76%	12.01%	NYSE Arca
ISHARES MSCI EMERGING MARKET	USD	55.49	-1.07%	1.78%	3.97%	7.39%	NYSE Arca
ISHARES IBOX HIGH YLD CORP	USD	87.08	-0.21%	-0.15%	-0.06%	-0.25%	NYSE Arca
FINANCIAL SELECT SECTOR SPDR	USD	38.37	0.24%	1.19%	4.47%	30.16%	NYSE Arca
VANECK GOLD MINERS	USD	38.17	-3.46%	-2.65%	8.10%	5.97%	NYSE Arca
ISHARES RUSSELL 2000 ETF	USD	226.42	-0.84%	0.34%	1.40%	15.49%	NYSE Arca
SPDR GOLD SHARES	USD	175.27	-1.98%	-1.37%	5.22%	-1.73%	NYSE Arca
ISHARES 20+ YEAR TREASURY BO	USD	138.01	-0.38%	-0.47%	-1.04%	-12.50%	NASDAQ GM
INVESCO QQQ TRUST SERIES 1	USD	330.00	-1.04%	-0.87%	-0.04%	5.18%	NASDAQ GM
ISHARES NASDAQ BIOTECHNOLOGY	USD	150.88	-0.13%	0.07%	0.41%	-0.40%	NASDAQ GM
ENERGY SELECT SECTOR SPDR	USD	55.38	0.27%	6.28%	9.06%	46.12%	NYSE Arca
PROSHARES ULTRA VIX ST FUTUR	USD	36.84	2.39%	4.45%	-20.60%	-65.41%	Cboe BZX
UNITED STATES OIL FUND LP	USD	46.97	0.15%	3.12%	4.68%	42.29%	NYSE Arca
ISHARES MSCI BRAZIL ETF	USD	40.84	-0.95%	6.91%	15.96%	10.17%	NYSE Arca
SPDR S&P OIL & GAS EXP & PR	USD	96.45	0.10%	8.32%	16.46%	64.87%	NYSE Arca
UTILITIES SELECT SECTOR SPDR	USD	65.49	0.60%	1.05%	-1.46%	4.45%	NYSE Arca
ISHARES US REAL ESTATE ETF	USD	102.79	-0.19%	3.31%	4.75%	20.01%	NYSE Arca
SPDR S&P BIOTECH ETF	USD	126.76	-0.38%	-1.42%	-2.35%	-9.96%	NYSE Arca
ISHARES IBOX INVESTMENT GRA	USD	131.16	-0.39%	-0.33%	-0.10%	-5.05%	NYSE Arca
ISHARES JP MORGAN US EMERGI	USD	111.27	-0.49%	-0.32%	0.48%	-4.00%	NASDAQ GM
REAL ESTATE SELECT SECT SPDR	USD	44.52	-0.20%	3.61%	5.30%	21.77%	NYSE Arca
ISHARES CHINA LARGE-CAP ETF	USD	46.32	-1.99%	-0.17%	1.65%	-0.24%	NYSE Arca
CONSUMER STAPLES SPDR	USD	71.27	0.62%	0.86%	2.12%	5.66%	NYSE Arca
VANECK JR GOLD MINERS	USD	52.65	-4.58%	-2.66%	8.60%	-2.93%	NYSE Arca
SPDR RBB BARC HIGH YIELD BND	USD	108.78	-0.14%	-0.12%	0.00%	-0.15%	NYSE Arca
VANGUARD REAL ESTATE ETF	USD	102.49	-0.37%	0.22%	4.32%	20.69%	NYSE Arca
GRAYSCALE BITCOIN TRUST BTC	USD	32.25	3.70%	-0.65%	-27.28%	0.78%	OTC US

USA Treasury Bonds Yield Curve (%)



Source: Bloomberg

Capital Market Laboratory Coordinator: Economist Bruno Bellido
Collaboration: Maria Camarena, Alonso García, Adrian Paredes and Jairo Valverde
email: pulsohorsatil@ulima.edu.pe
facebook: www.facebook.com/pulsohorsatil

LIMA

Stocks

Ticker	Currency	Price	1D*	5D*	30D*	YTD*	Frequency	Volume (US\$)	Beta	Dividend Yield (%)	Price Earning	Market Cap. (M US\$)	Economic Sector*	Index Weight
▲ ALICORC1 PE**	S/.	6.50	0.50%	1.36%	3.69%	-7.01%	100.00%	991,245	0.89	3.85	12.26	1,432.00	Industrial	3.53%
▲ ATACOCB1 PE**	S/.	0.11	2.73%	7.62%	-10.32%	-18.12%	70.00%	12,316	1.17	0.00	-	27.58	Mining	1.02%
▲ BACKUS1 PE**	S/.	18.00	1.12%	5.76%	-9.09%	-10.67%	100.00%	183,106	0.72	1.95	8.69	7,424.64	Industrial	0.82%
▲ BAP PE**	US\$	142.00	0.50%	8.31%	20.81%	-11.58%	100.00%	11,574,270	1.11	0.00	-	13,402.29	Diverse	5.82%
▲ BVN PE**	US\$	11.71	1.56%	5.50%	20.35%	-2.42%	100.00%	329,301	1.15	0.00	-	3,222.14	Mining	5.88%
▼ CASAGRC1 PE**	S/.	4.70	-1.88%	2.17%	-14.55%	-1.05%	90.00%	16,603	1.13	15.91	3.47	102.27	Agricultural	1.31%
▼ BBVAC1 PE**	S/.	1.99	-1.49%	4.74%	-3.86%	-8.29%	85.00%	171,592	1.00	2.27	28.41	3,356.25	Finance	2.85%
▲ CORAREH1 PE**	S/.	1.05	0.96%	1.94%	-3.67%	17.98%	100.00%	98,395	1.33	19.37	3.36	382.79	Industrial	1.72%
▲ CPACASC1 PE**	S/.	5.96	2.76%	12.45%	9.36%	12.45%	100.00%	1,033,304	0.79	3.86	42.57	705.41	Industrial	2.38%
▲ CVERDEC1 PE**	US\$	20.05	2.82%	17.94%	-11.87%	-4.16%	100.00%	539,252	1.52	2.85	11.48	7,018.62	Mining	5.25%
- ENGEPEC1 PE**	S/.	2.07	0.00%	1.97%	0.98%	3.50%	95.00%	102,224	0.71	9.54	12.65	1,517.89	Public Services	1.44%
▼ ENDISPC1**	S/.	4.60	-0.65%	2.22%	-7.07%	-14.81%	75.00%	21,614	0.77	3.71	10.35	758.76	Public Services	0.98%
▼ FERREYC1 PE**	S/.	1.69	-0.59%	5.62%	-7.65%	-2.87%	100.00%	702,744	1.02	10.78	7.47	425.93	Diverse	4.90%
▲ AENZAC1 PE**	S/.	1.35	3.85%	26.17%	12.50%	-22.41%	100.00%	169,722	0.82	0.00	-	304.06	Diverse	4.05%
▼ IFS PE**	US\$	28.58	-0.69%	13.64%	15.20%	-7.63%	95.00%	121,611	1.20	2.69	16.67	3,299.50	Diverse	7.22%
▼ INRETC1 PE**	US\$	37.50	-1.32%	4.20%	5.93%	-4.34%	100.00%	2,104,406	0.84	1.82	79.51	3,855.27	Diverse	5.28%
▼ LUSURC1 PE**	S/.	11.20	-2.44%	-2.69%	-6.67%	-56.08%	70.00%	8,743	0.85	7.68	12.13	1,408.79	Public Services	1.81%
▼ MINSUR1 PE**	S/.	2.76	1.85%	1.85%	0.36%	49.19%	100.00%	516,023	0.98	12.10	5.43	2,055.40	Mining	3.09%
- PML PE**	US\$	0.12	0.00%	0.00%	0.00%	13.21%	75.00%	25,816	1.42	0.00	-	31.73	Mining	2.12%
▲ RELAPAC1 PE**	S/.	0.12	5.26%	8.11%	2.56%	73.91%	95.00%	46,410	1.13	0.00	3.15	257.87	Industrial	2.12%
▼ SCCO PE**	US\$	69.41	-2.90%	0.42%	0.01%	5.33%	100.00%	48,902	1.02	3.17	24.12	53,659.02	Mining	2.14%
▲ SIDERC1 PE**	S/.	0.97	3.19%	3.19%	0.00%	14.12%	100.00%	30,731	1.01	23.14	4.85	222.48	Industrial	1.43%
▼ TV PE**	US\$	0.20	-3.33%	-0.49%	16.00%	38.10%	100.00%	70,203	1.29	0.00	-	200.79	Mining	2.93%
▲ UNACEMC1 PE**	S/.	1.45	1.40%	2.11%	-3.33%	-6.45%	95.00%	104,387	1.02	1.79	11.45	680.98	Industrial	3.00%
▲ VOLCABC1 PE**	S/.	0.68	4.62%	7.94%	-4.23%	30.77%	100.00%	457,167	1.58	0.00	-	716.06	Mining	5.90%
- NEXAPEC1 PE**	S/.	3.30	0.00%	8.20%	3.12%	16.61%	65.00%	125,718	1.14	0.00	25.48	1,126.42	Mining	1.56%

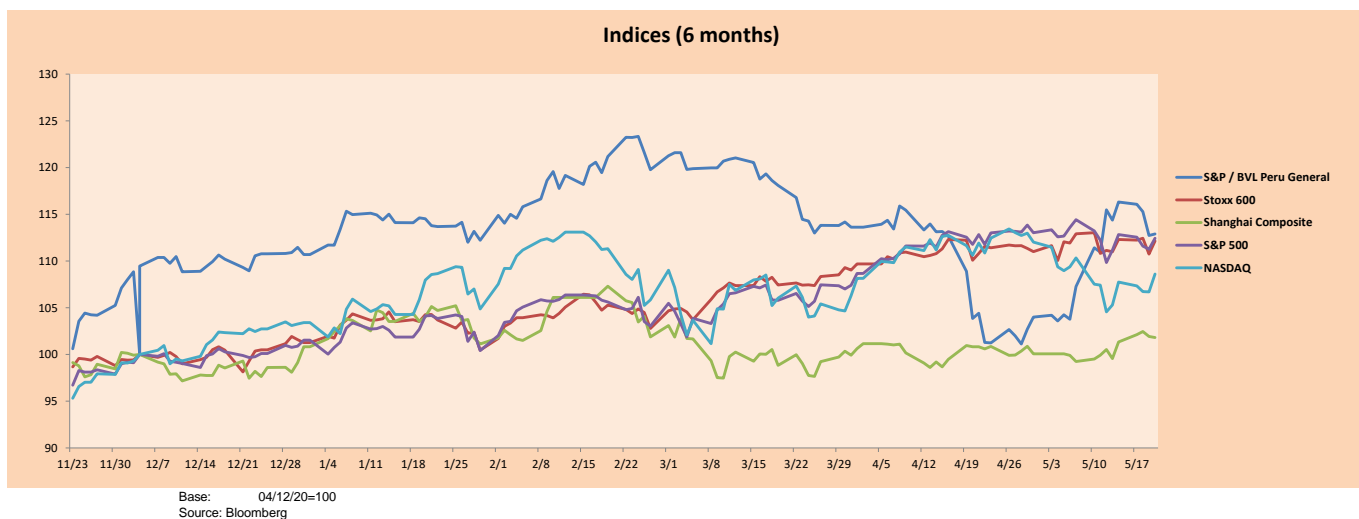
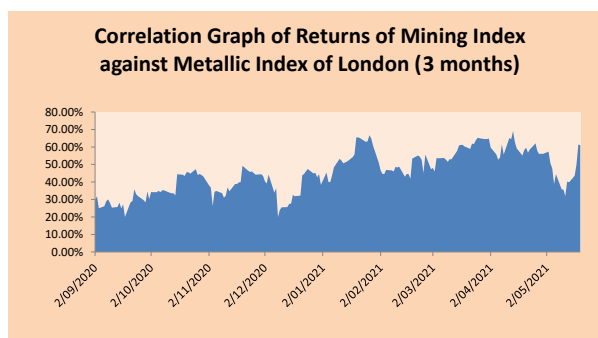
Quantity of shares: 26
 Source: Bloomberg, Económática
 * Bloomberg Industry Classification System
 ** PER is used in the stock market and original currency of the instrument
 *Legend: Variation 1D: 1 Day; 5D: 5 Days, 1M: 1 Month; YTD: Var.% 12/31/20 to date

Sectorial Indices

	Close	1D*	5D*	30D*	YTD*	Beta
▲ S&P/BVLMining	444.47	0.09%	3.90%	6.06%	13.98%	1.16
▲ S&P/BVLCConsumer	1,072.09	0.57%	6.09%	1.19%	-1.52%	0.59
▲ S&P/BVLIndustrials	191.60	1.41%	8.92%	1.53%	0.55%	0.63
▲ S&P/BVLFinancials	984.73	1.49%	9.22%	20.14%	-4.76%	1.22
▲ S&P/BVLConstruction	207.17	2.14%	10.30%	5.60%	-0.93%	0.63
▲ S&P/BVLPublicSvcs	548.83	1.17%	0.86%	-0.03%	-10.63%	0.44
▲ S&P/BVLElectricUtil	535.79	1.17%	0.86%	-0.03%	-10.63%	0.44

S&P/BVLConstructionTRPEN

*Legend: Variation 1D: 1 Day; 5D: 5 Days, 1M: 1 Month; YTD: Var.% 12/31/20 to date



Base: 04/12/20=100
 Source: Bloomberg

Capital Market Laboratory Coordinator: Economist Bruno Bellido
 Collaboration: María Camarena, Alonso García, Adrían Paredes and Jairo Valverde
 email: pulsobursatil@ulima.edu.pe
 facebook: www.facebook.com/pulsobursatil

The content of this document is just for informational purposes. The information and opinions expressed should not be considered as recommendations for future decisions. Under any circumstances, the Capital Market Laboratory of University of Lima will be responsible for the use of the statements in this document.

SOVEREIGN RATING

RISK RATINGS

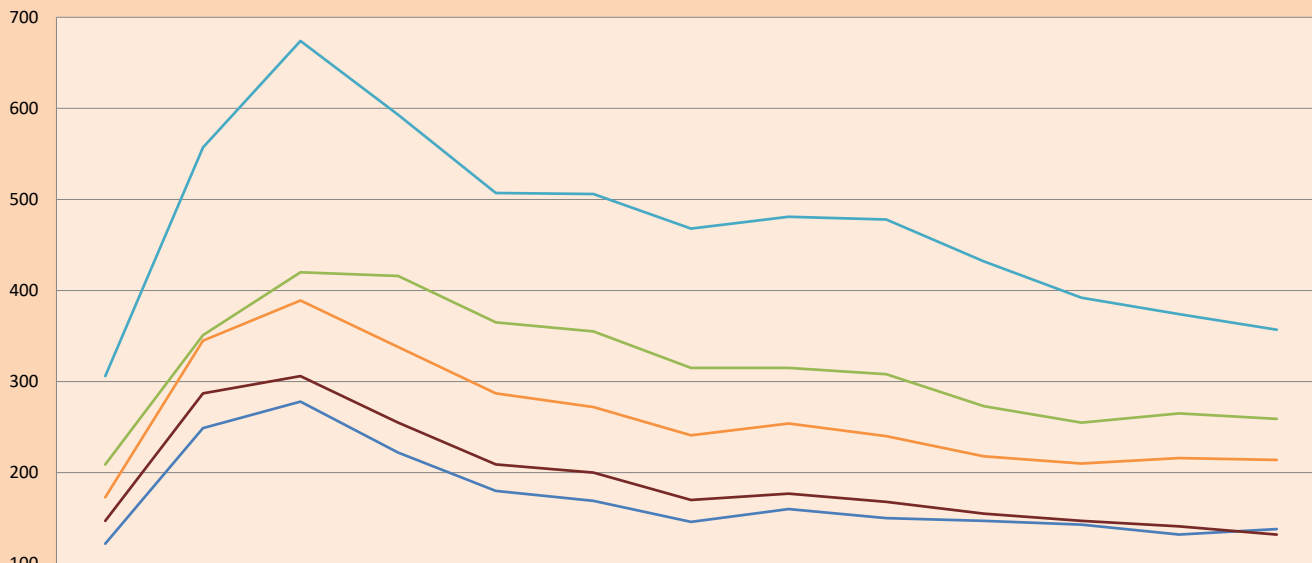
Moody's	S&P	Fitch		
Aaa	AAA	AAA	Prime	
Aa1	AA+	AA+	High credit quality	
Aa2	AA	AA		
Aa3	AA-	AA-		
A1	A+	A+	Medium-high grade, with low credit risk	
A2	A	A		
A3	A-	A-		
Baa1	BBB+	BBB+	Moderate Credit Risk	
Baa2	BBB	BBB		
Baa3	BBB-	BBB-		
Ba1	BB+	BB+	It has speculative elements and it is subject to substantial credit risk	
Ba2	BB	BB		
Ba3	BB-	BB-		
B1	B+	B+	It is considered speculative and it has high credit risk	
B2	B	B		
B3	B-	B-		
Caa1	CCC+	CCC	Bad credit conditions and it is subject to high credit risk	
Caa2	CCC			
Caa3	CCC-			
Ca	C	DDD	Very close to default or in default	
C	D			DD
				D

Source: Bloomberg

Latin America Credit Rating			
Clasificadora de riesgo			
Country	Moody's	Fitch	S&P
Peru	A3	BBB+	BBB+
México	Ba2	BB-	BB-
Venezuela	C	WD	SD
Brazil	Ba2	BB-	BB-
Colombia	Baa2	BBB-	BB+
Chile	A1	A-	A
Argentine	Ca	WD	CCC+
Panama	Baa2	BBB-	BBB

Source: Bloomberg

LATAM Country Risk (bps)



	Feb-20	Mar-20	Abr-20	May-20	Jun-20	Jul-20	Ago-20	Set-20	Oct-20	Nov-20	Dic-20	Ene-21	Feb-21
Perú	122	249	278	222	180	169	146	160	150	147	143	132	138
Brasil	209	351	420	416	365	355	315	315	308	273	255	265	259
México	306	557	674	593	507	506	468	481	478	432	392	374	357
Colombia	173	345	389	338	287	272	241	254	240	218	210	216	214
Chile	147	287	306	255	209	200	170	177	168	155	147	141	132

Source: BCRP

Capital Market Laboratory Coordinator: Economist Bruno Bellido
Collaboration: María Camarena, Alonso García, Nicolás Muñoz, Adrián Paredes y Jairo Valverde
email: pulsobursatil@ulima.edu.pe
facebook: www.facebook.com/pulsobursatil.ul